

V&V Reference Report

L2 ASCDS Version : 8.4.3

Observation 13128 - L2 Version 1
Chandra X-Ray Center

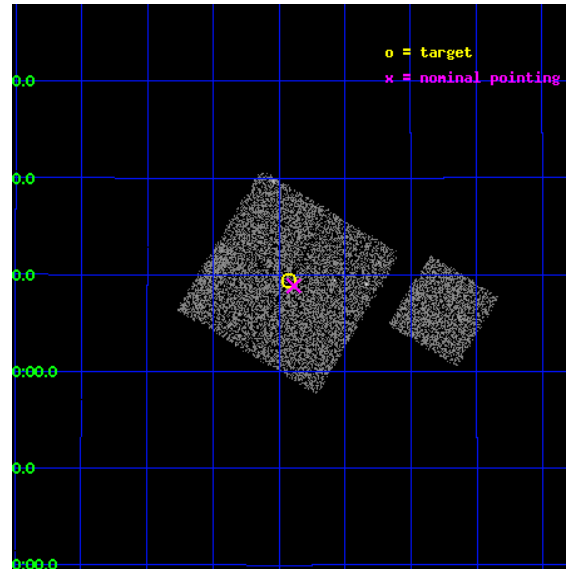
L2 Processing Date : Feb 25 2012

Contents

1	Front	2
2	OBI	3
2.1	OBI	3
2.1.1	Images	3
2.1.2	Bias	3
2.1.3	Parameters	4
2.1.4	Events	4
2.2	Compared Parameters	5
2.3	Aspect	6
2.4	Star Slots	9
2.4.1	Slot 3	9
2.4.2	Slot 4	10
2.4.3	Slot 5	11
2.4.4	Slot 6	12
2.4.5	Slot 7	13
2.5	FID Slots	14
2.5.1	Slot 0	14
2.5.2	Slot 1	15
2.5.3	Slot 2	16
A	Summary	17
A.1	Status	17
A.2	Comments	17

1 Front

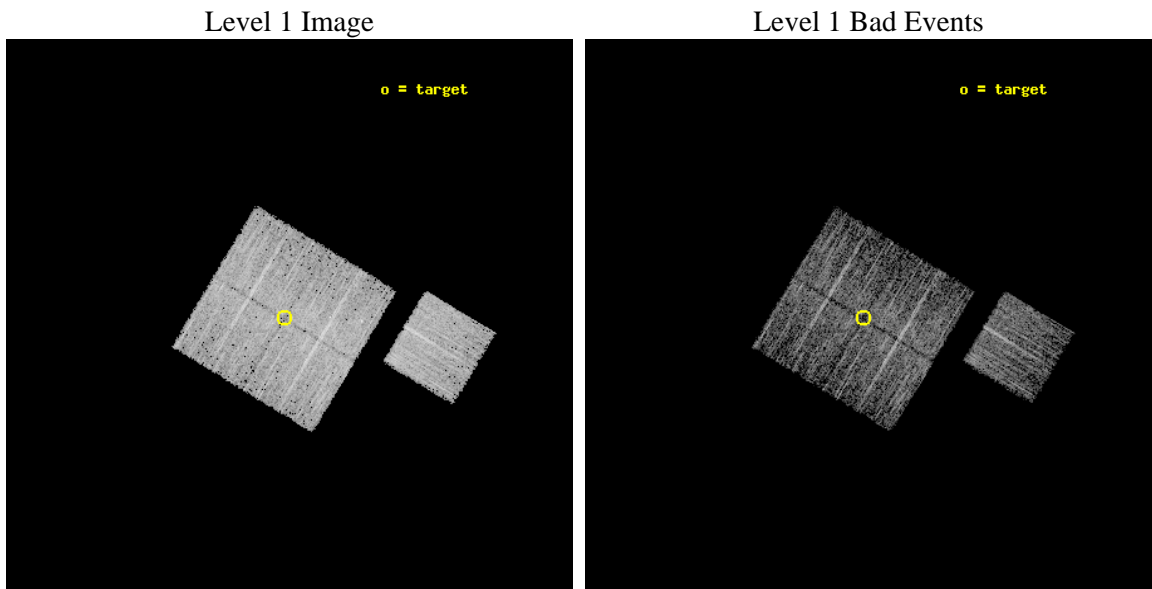
seq_num	801055	Sequence number
obs_id	13128	Observation id
title	The Chandra Cluster Outskirts Snapshot Survey	Proposal title
observer	Prof. Gordon Garmire	Principal investigator
object	A1413_Field3	Source name
dtcycle	0	
cycle	P	events from which exps? Prim/Second/Both
ra_targ	178.85619	Observer's specified target RA [deg]
dec_targ	23.15571	Observer's specified target Dec [deg]
ra_nom	178.84669851767	Nominal RA [deg]
dec_nom	23.147675666885	Nominal Dec [deg]
roll_nom	121.12328702284	Nominal Roll [deg]
revision	1	Processing version of data
ontime	5080.9000390768	Sum of GTIs [s]
livetime	5014.5143395621	Livetime [s]
ontime0	5080.9000390768	Sum of GTIs [s]
ontime1	5080.9000390768	Sum of GTIs [s]
ontime2	5080.9000390768	Sum of GTIs [s]
ontime3	5080.9000390768	Sum of GTIs [s]
ontime6	5080.9000390768	Sum of GTIs [s]
l2events	16464	Number of level 2 events



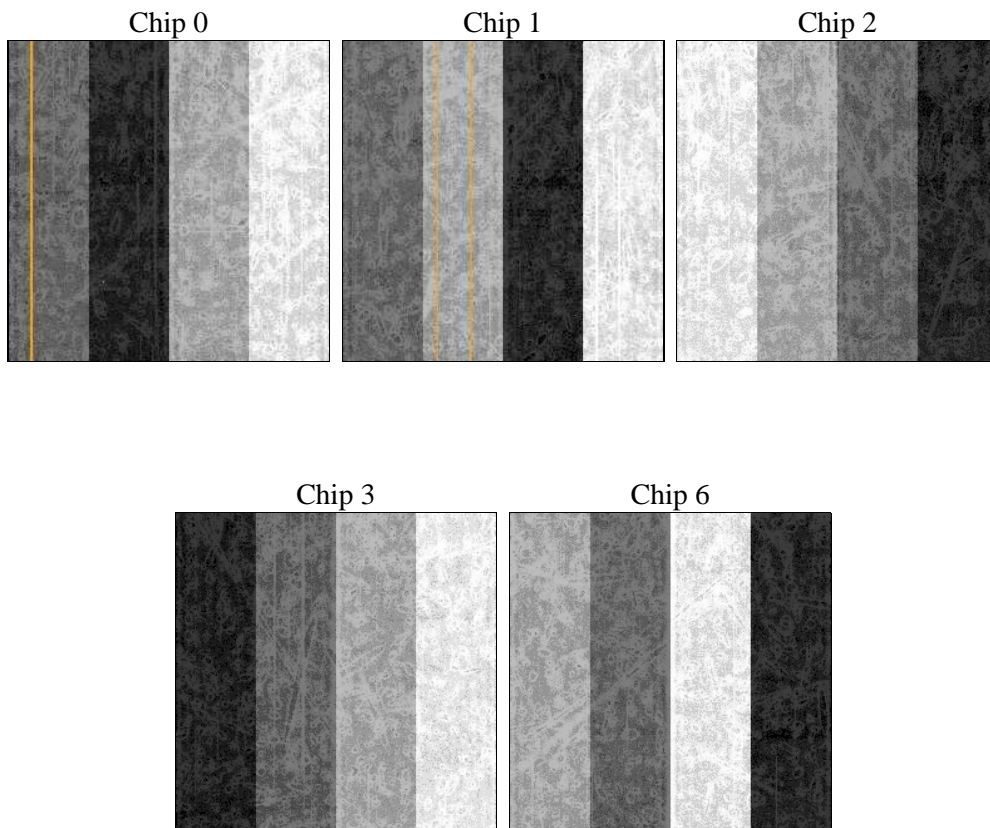
2 OBI

2.1 OBI

2.1.1 Images



2.1.2 Bias



2.1.3 Parameters

obi_num	0	Obi number	sched_exp_time	5000.000000	[s] Scheduled observation exposure time
ascdsver	8.4.3	Processing system revision	ontime	5080.9000390768	Sum of GTIs [s]
caldsver	4.4.8	 	ontime0	5080.9000390768	Sum of GTIs [s]
date	2012-02-25T22:14:44	Date and time of file creation	ontime1	5080.9000390768	Sum of GTIs [s]
revision	1	Processing version of data	ontime2	5080.9000390768	Sum of GTIs [s]
			ontime3	5080.9000390768	Sum of GTIs [s]
			ontime6	5080.9000390768	Sum of GTIs [s]
			l1events	161303	Number of level 1 events

2.1.4 Events

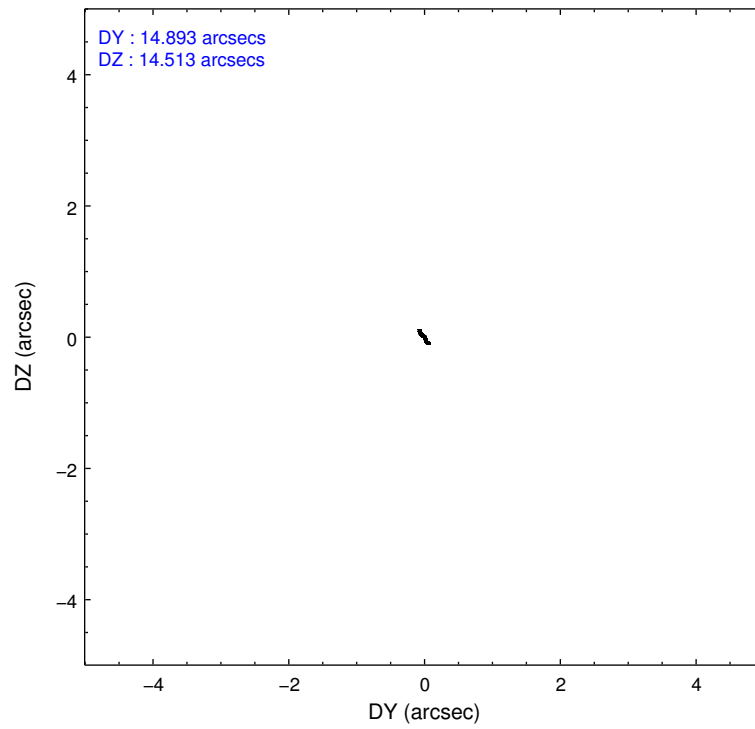
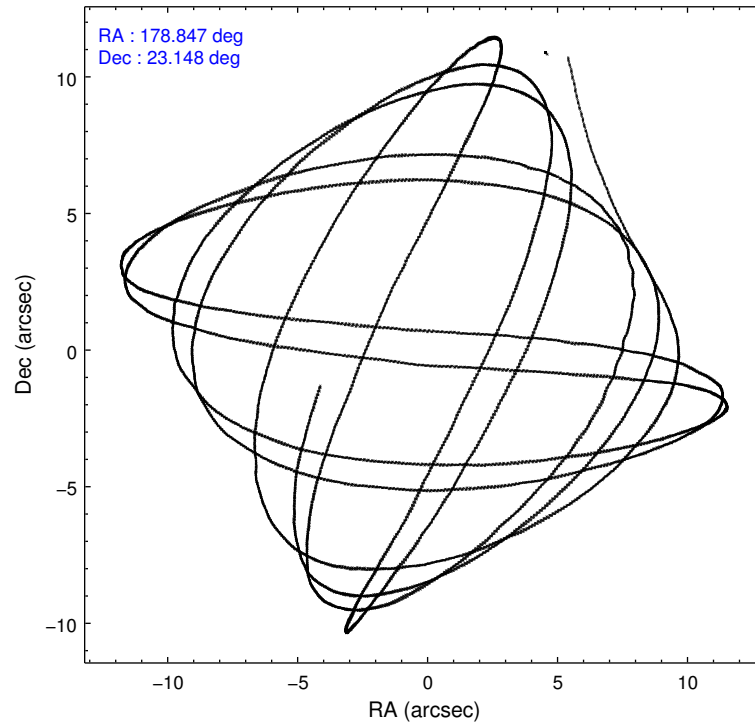
	ccd 0	ccd 1	ccd 2	ccd 3	ccd 6
level 1 events	30676	30462	33312	32803	34050
rejected events	26607	26242	29225	29348	30042
rejected %	86%	86%	87%	89%	88%

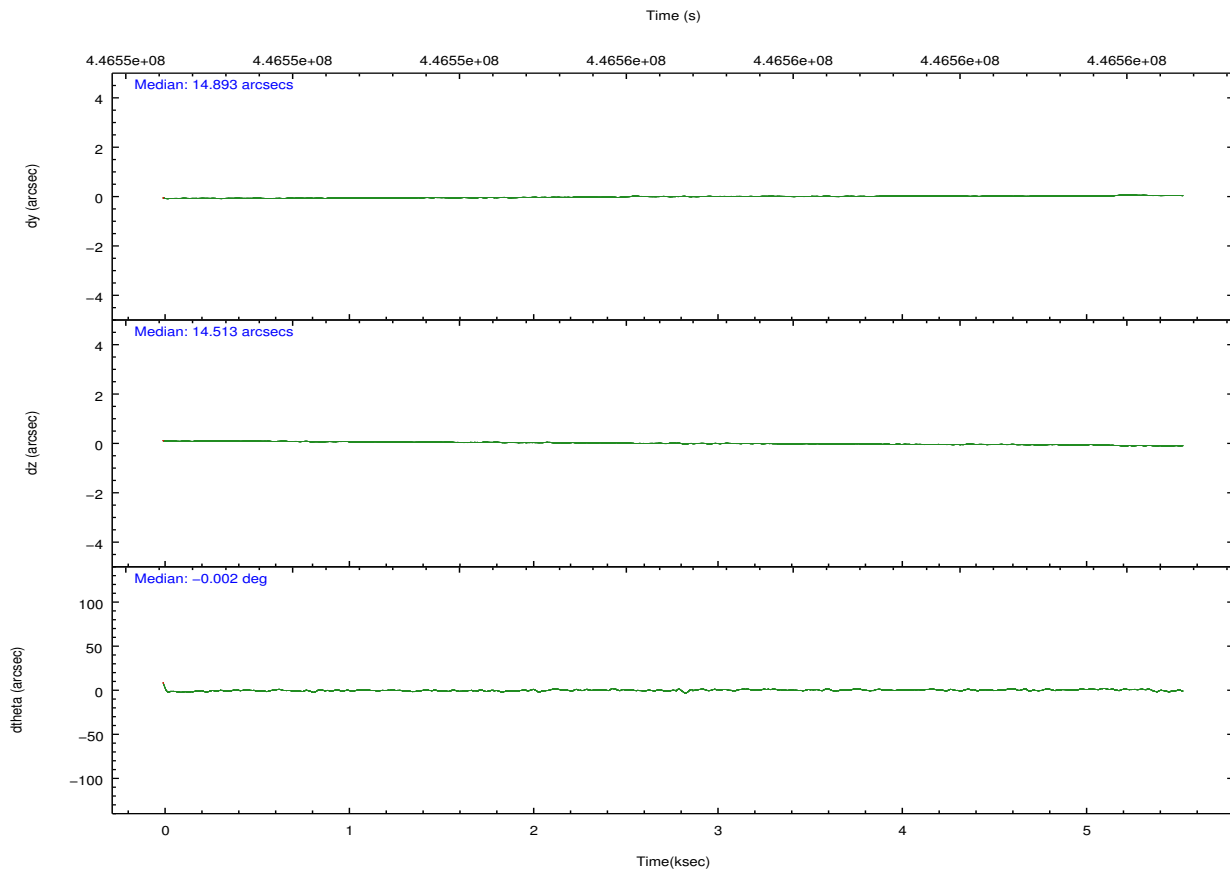
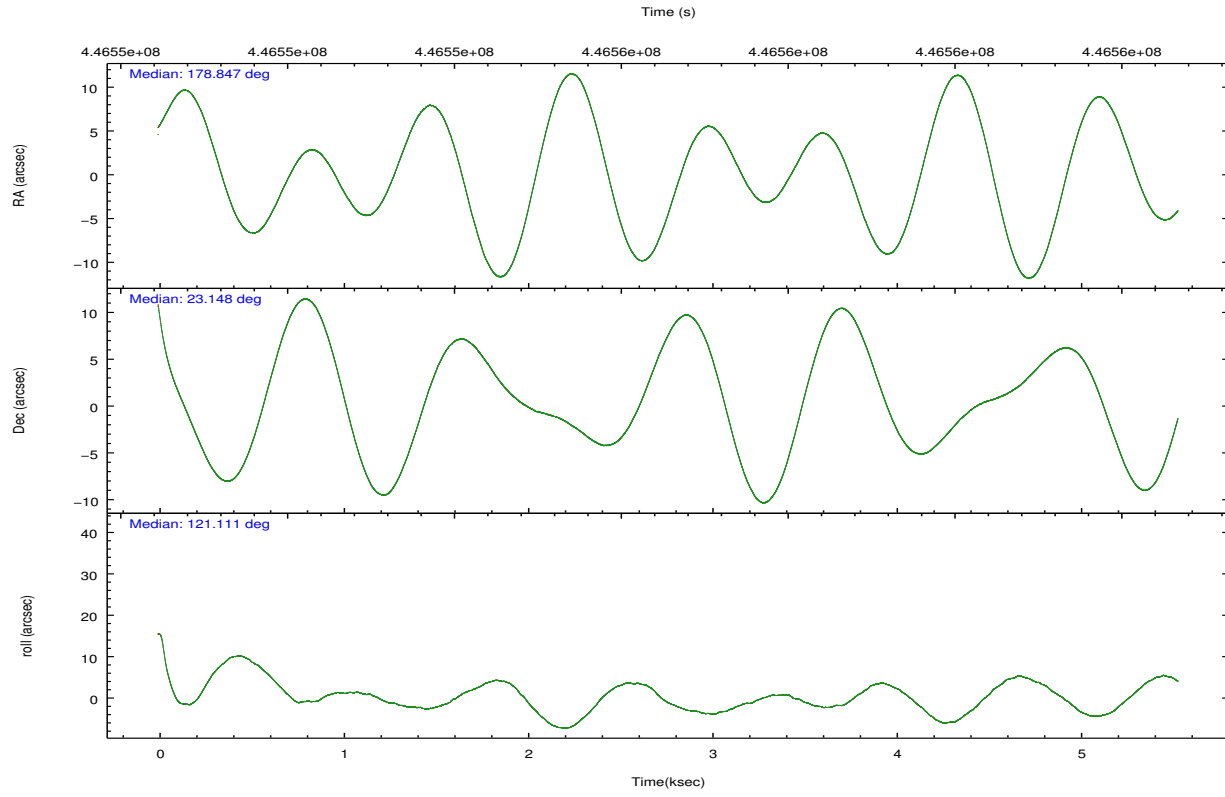
	ccd 0	ccd 1	ccd 2	ccd 3	ccd 6
grade 0 events	1518	1543	1585	1244	1453
	4%	5%	4%	3%	4%
grade 1 events	14	16	27	24	18
	0%	0%	0%	0%	0%
grade 2 events	1035	953	984	800	905
	3%	3%	2%	2%	2%
grade 3 events	397	409	393	363	377
	1%	1%	1%	1%	1%
grade 4 events	365	441	397	353	397
	1%	1%	1%	1%	1%
grade 5 events	1426	1440	1312	1534	1465
	4%	4%	3%	4%	4%
grade 6 events	754	877	731	697	879
	2%	2%	2%	2%	2%
grade 7 events	25167	24783	27883	27788	28556
	82%	81%	83%	84%	83%

2.2 Compared Parameters

Parameter	Planned	Actual	Parameter	Planned	Actual
Instrument	ACIS	ACIS	Obspar format version number	7	7
Detector	ACIS-01236	ACIS-01236	Obspar file type	PREDICTED	ACTUAL
Grating	NONE	NONE	Obspar update status	NONE	UPDATED
Data mode	VFAINT	VFAINT	CCD I0 on	Y	Y
Observation mode	POINTING	POINTING	CCD I1 on	Y	Y
[deg] Pointing RA	178.872896	178.8466985176688	CCD I2 on	Y	Y
[deg] Pointing Dec	23.134606	23.14767566688521	CCD I3 on	Y	Y
[deg] Pointing Roll	120.904270	121.1232870228405	CCD S0 on	N	N
[mm] SIM focus pos	-0.782348	-0.7809083437167272	CCD S1 on	N	N
[mm] SIM defocus	0	0.001439871863259334	CCD S2 on	O1	Y
[mm] SIM translation stage pos	-233.592463	-233.5874344608287	CCD S3 on	N	N
[mm] SIM translation stage offset	0	-0.005018542100998502	CCD S4 on	N	N
[s] Observation start time (MET)	446553035.184000	446551922.64914	CCD S5 on	N	N
Observation start date	2012-02-25T10:29:29	2012-02-25T10:12:02	Number of optional ACIS chips dropped	0	0
[s] Observation end time (MET)	446558035.184000	446559434.36204	On-chip summing requested	N	N
Observation end date	2012-02-25T11:52:49	2012-02-25T12:17:14	Subarray requested	NONE	NONE
Read mode	TIMED	TIMED	Alternating exposures requested	N	N
			[s] Primary exposure time	0.000000	3.1

2.3 Aspect



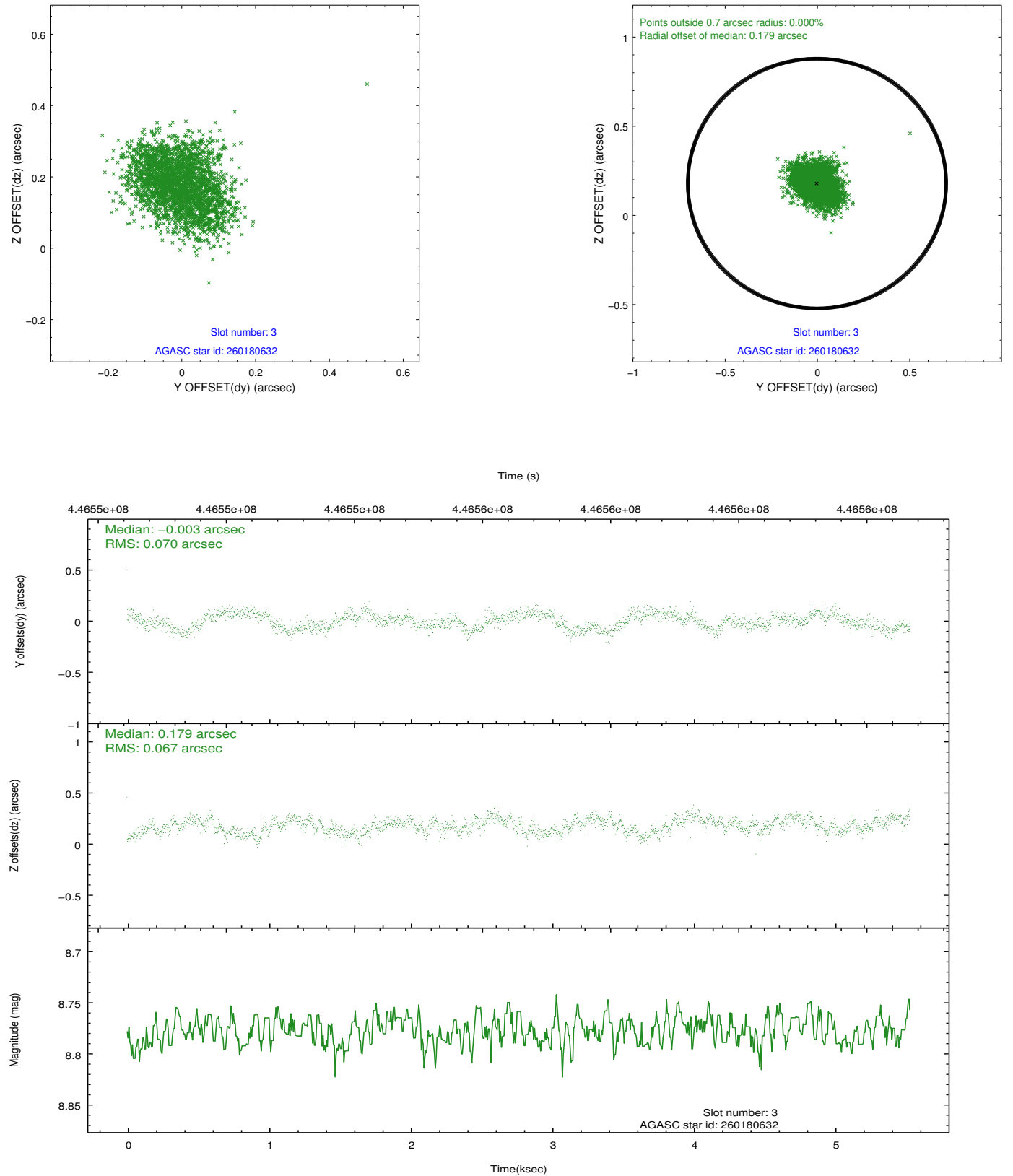


Slot Statistics

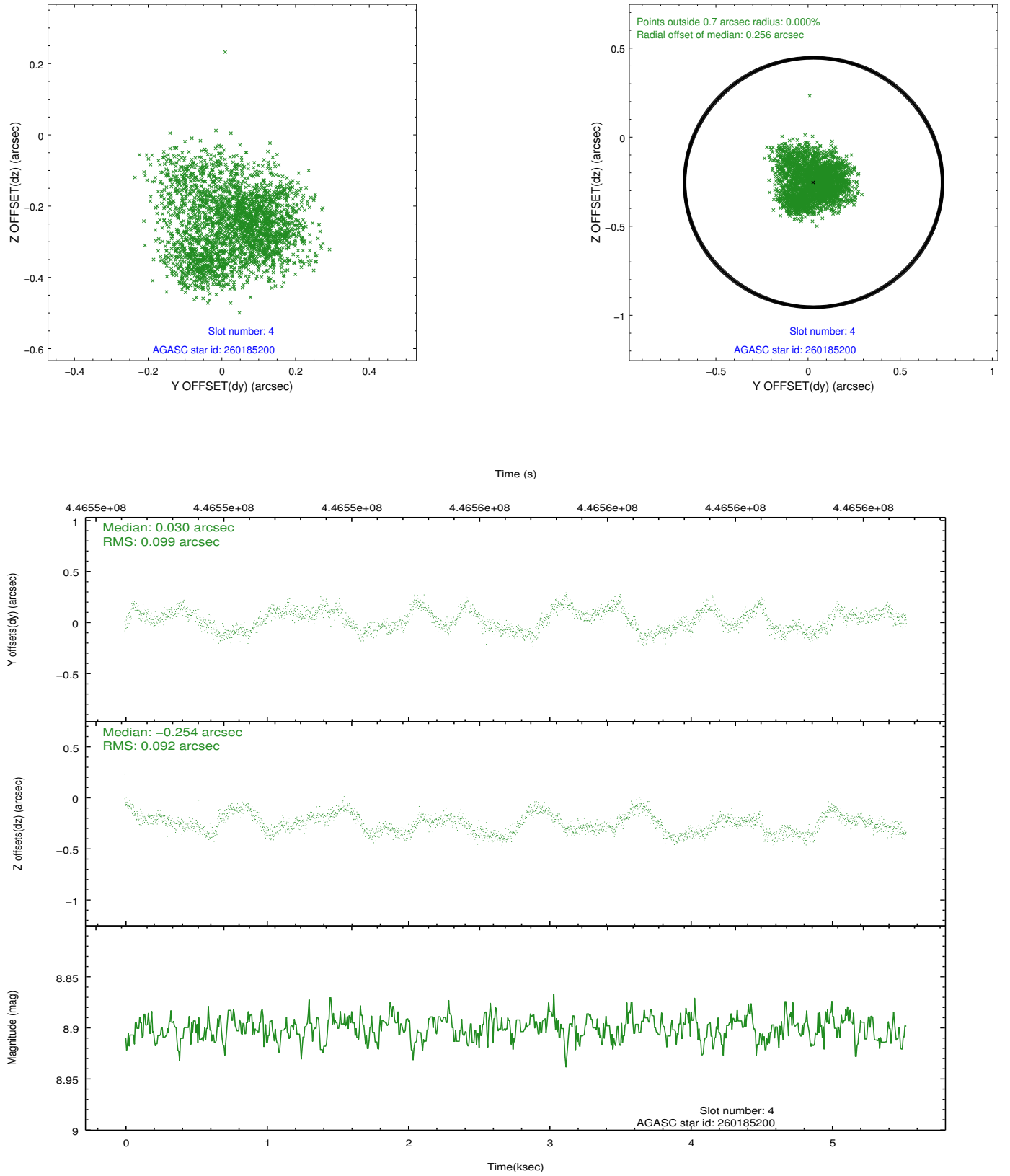
slot	status	id	mag	n_pts	med_dy	med_dz	dr1	dr2	ra	dec	mean_y	mean_z
0	FID	ACIS-I-2	6.99	1350	-0.094	-0.072	0.015	0.024	0.000000	0.000000	-769.68	-844.54
1	FID	ACIS-I-4	7.01	1350	0.209	0.075	0.011	0.021	0.000000	0.000000	2144.19	1061.23
2	FID	ACIS-I-5	7.07	1350	-0.218	0.066	0.012	0.020	0.000000	0.000000	-1822.24	1060.31
3	GUIDE	260180632	8.78	2698	-0.003	0.179	0.105	0.161	179.568974	23.188670	-1010.53	-2078.90
4	GUIDE	260185200	8.90	2698	0.030	-0.254	0.149	0.216	178.507382	22.643527	-892.09	1948.65
5	GUIDE	260186848	8.20	2700	-0.172	-0.236	0.082	0.126	178.929956	22.642824	-1616.52	747.22
6	GUIDE	260188192	9.16	2698	0.111	0.080	0.095	0.154	179.330149	22.976535	-1264.28	-1008.61
7	GUIDE	260189424	8.63	2697	0.039	0.227	0.080	0.131	179.326096	22.659458	-2238.75	-414.20

2.4 Star Slots

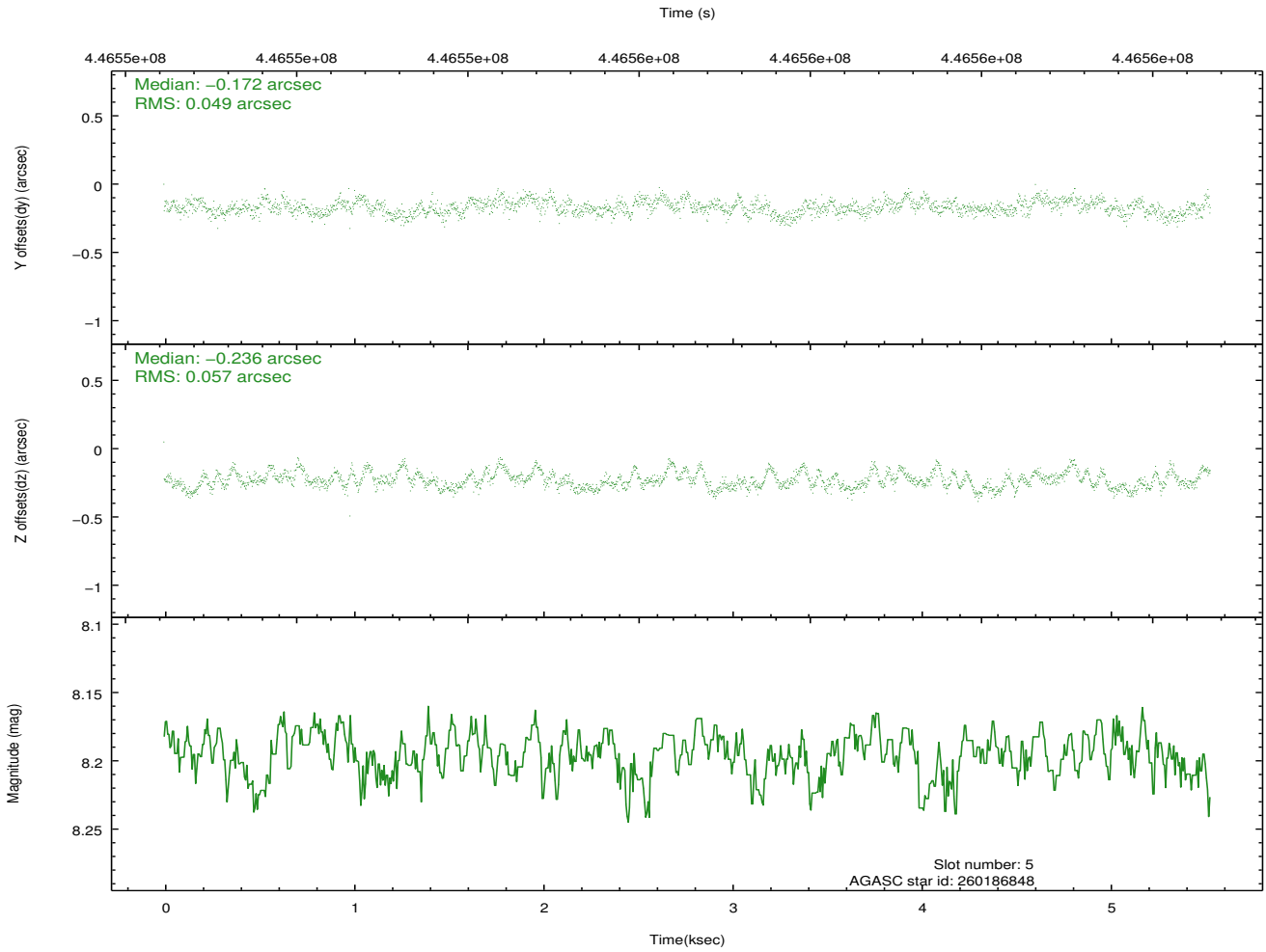
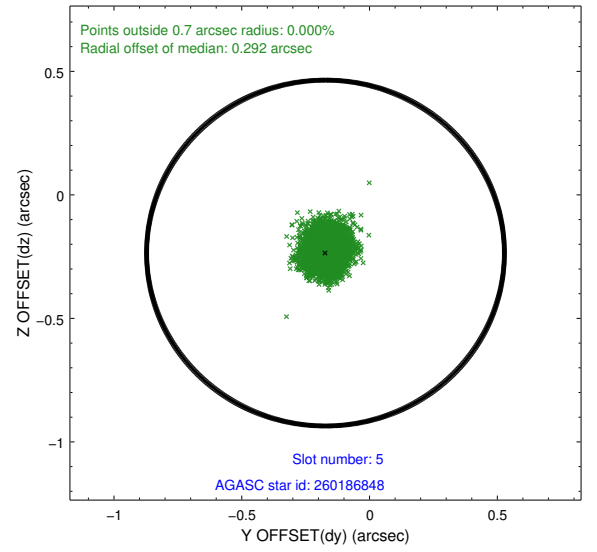
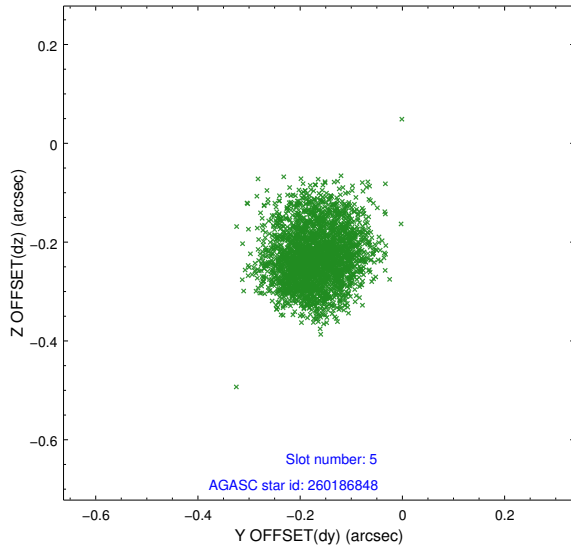
2.4.1 Slot 3



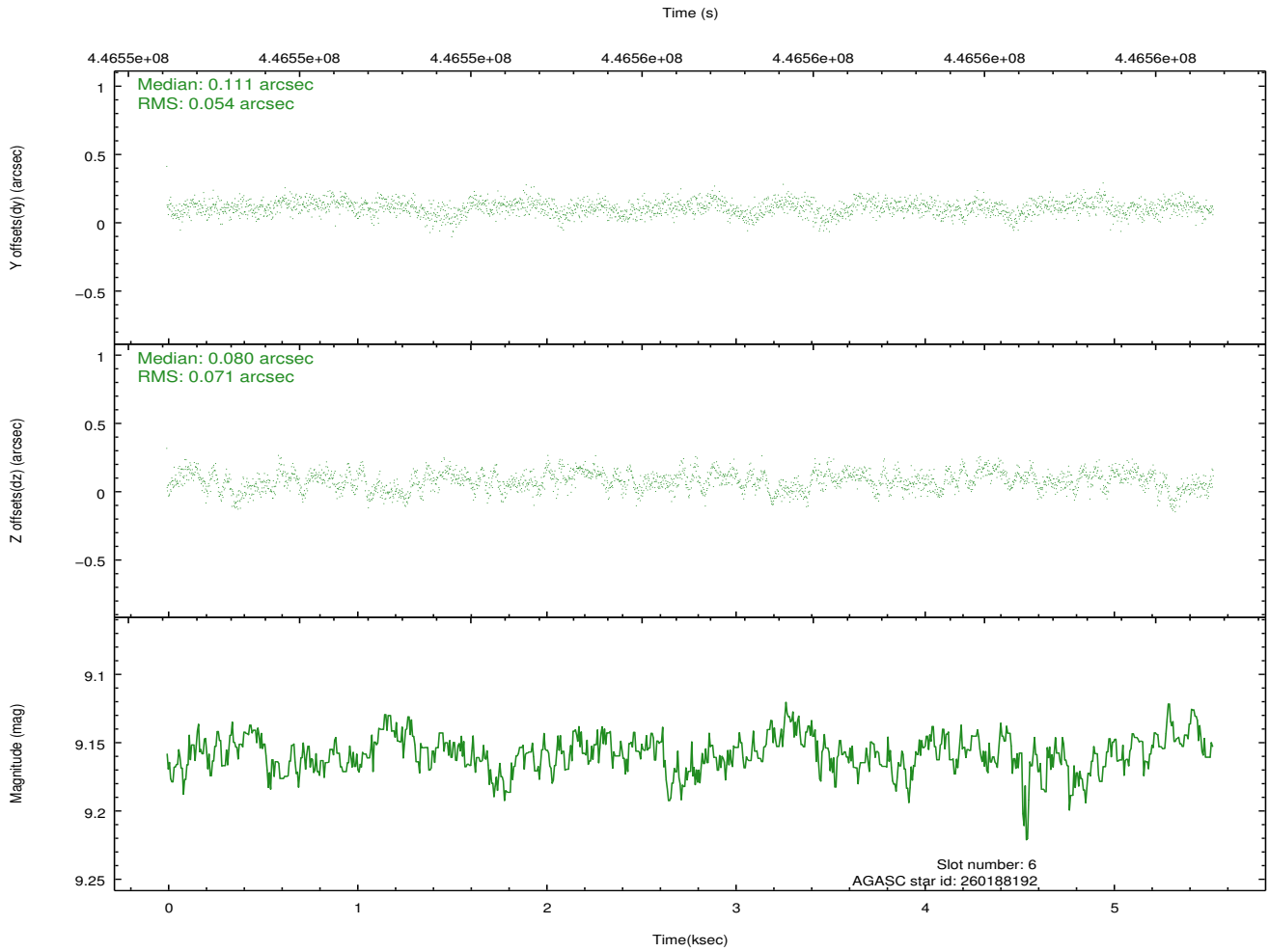
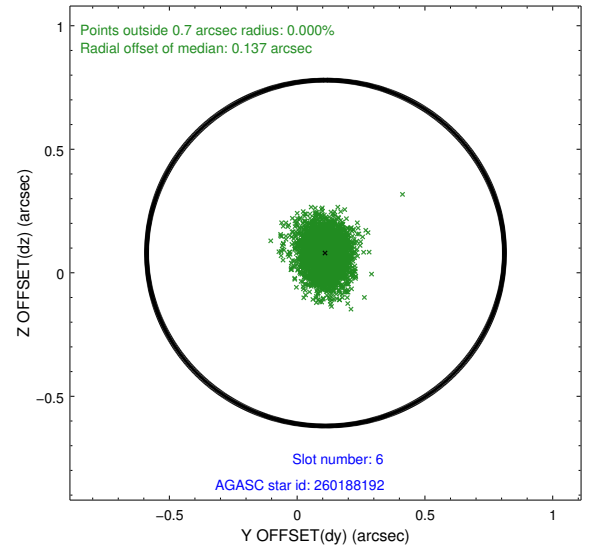
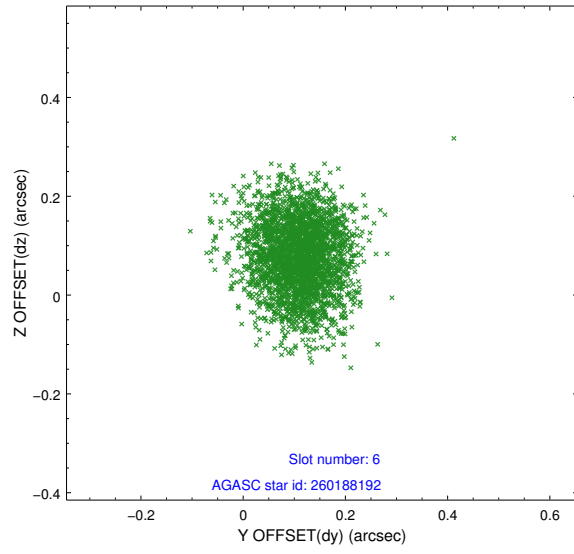
2.4.2 Slot 4



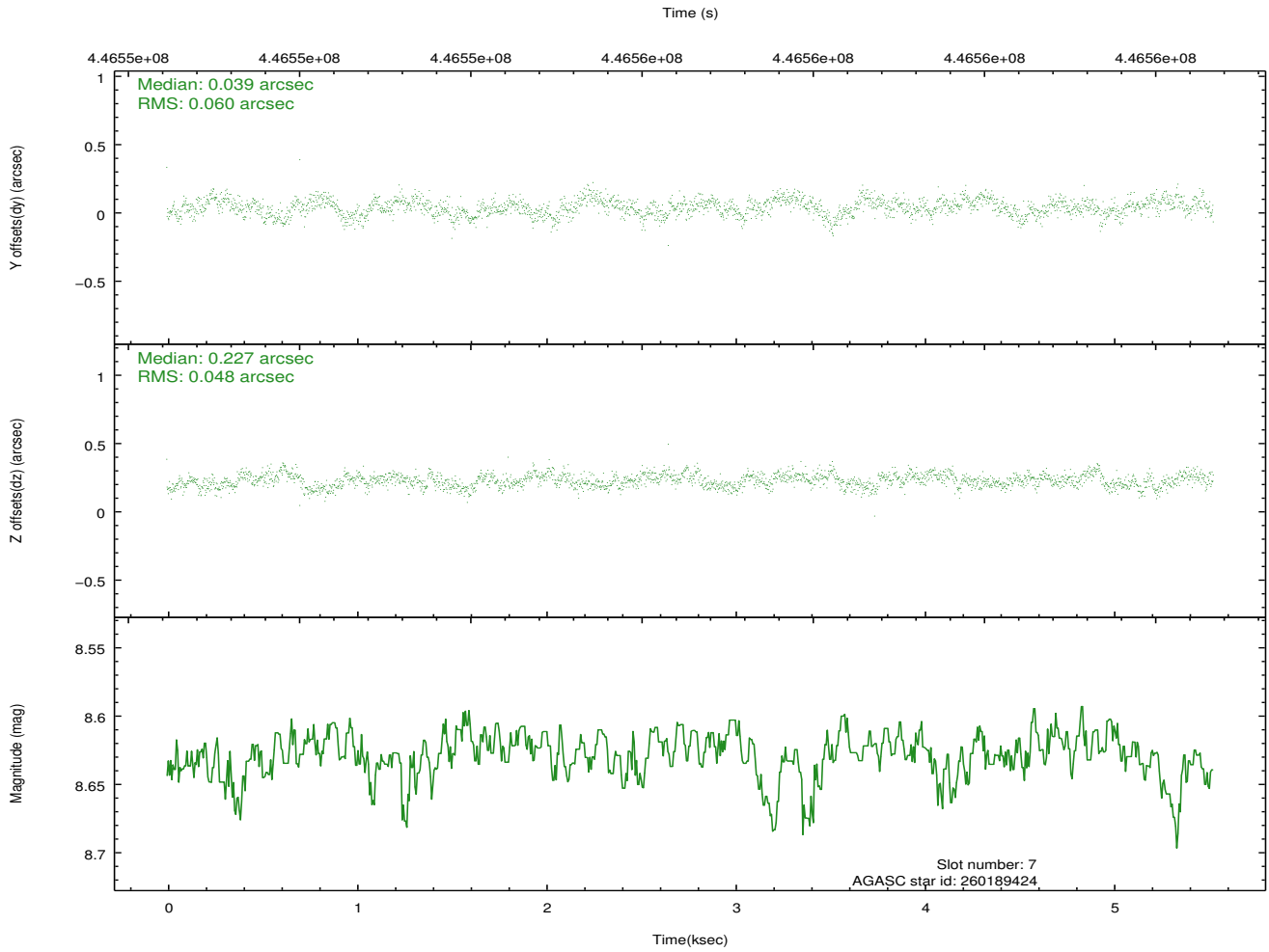
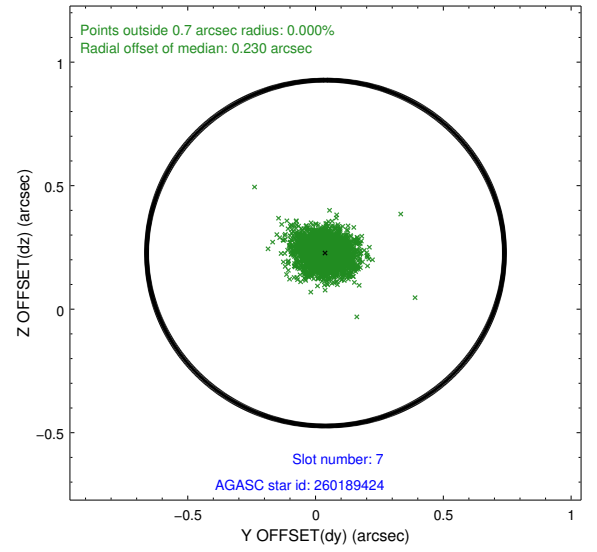
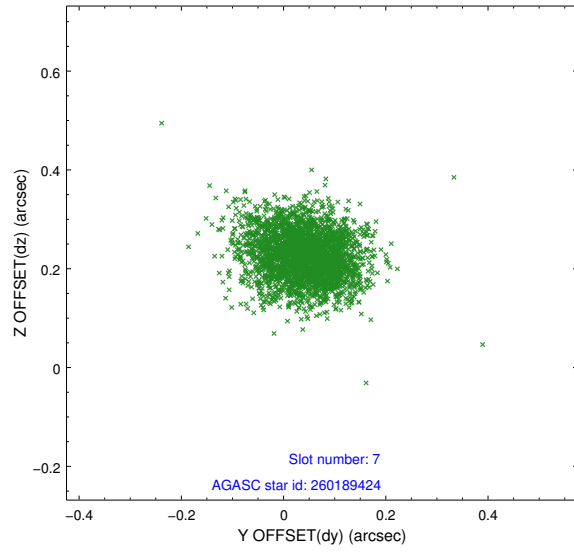
2.4.3 Slot 5



2.4.4 Slot 6

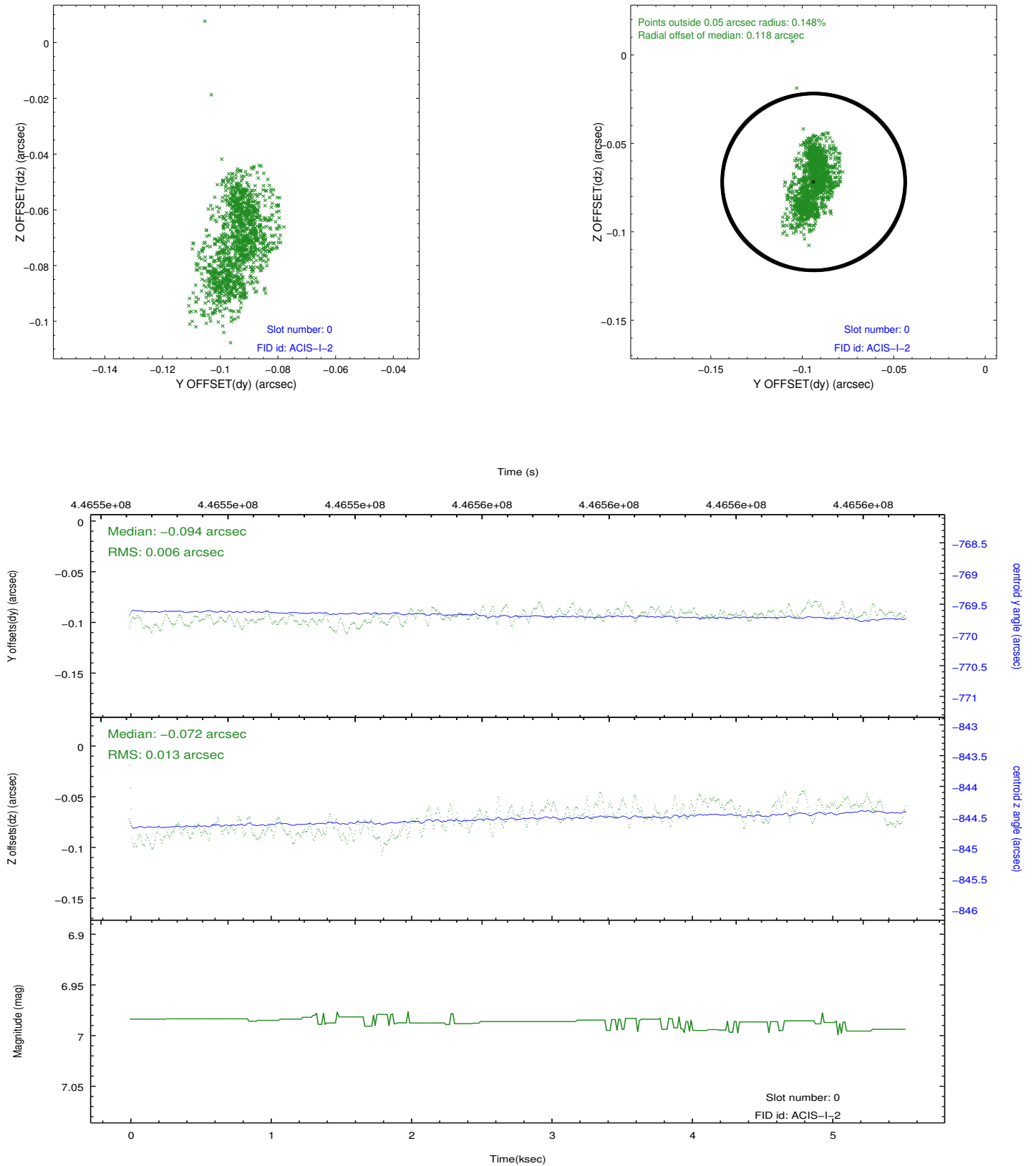


2.4.5 Slot 7

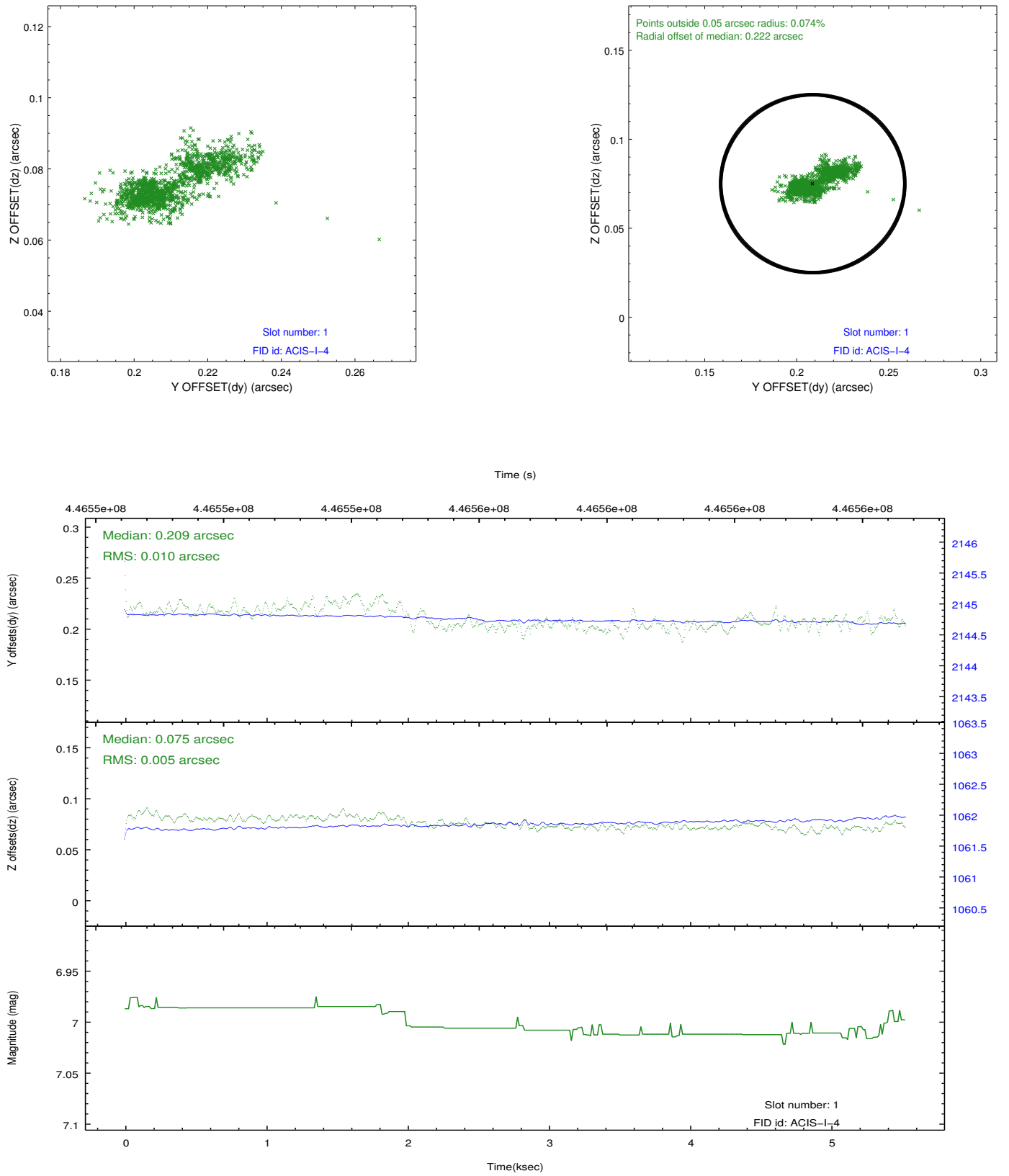


2.5 FID Slots

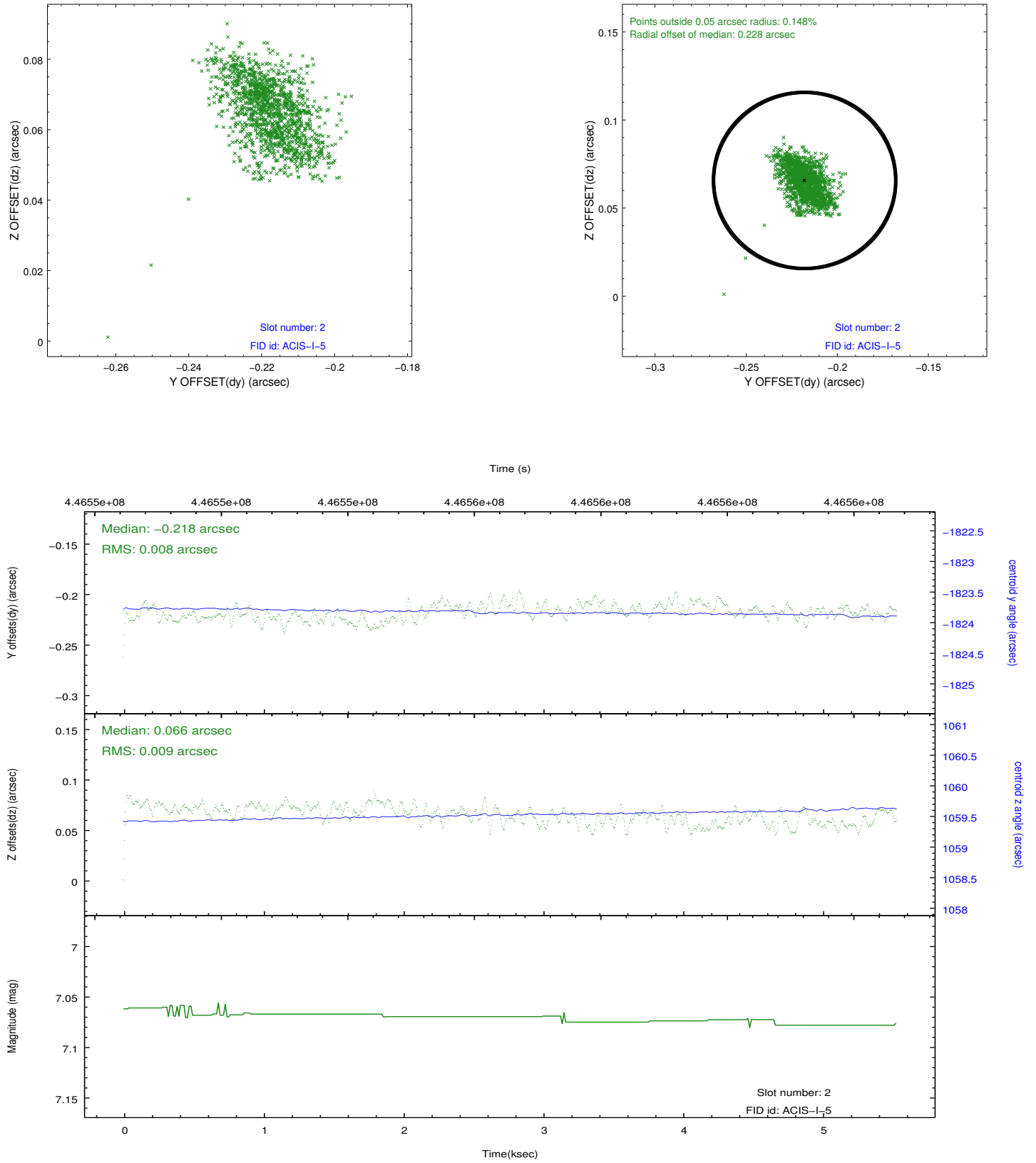
2.5.1 Slot 0



2.5.2 Slot 1



2.5.3 Slot 2



A Summary

A.1 Status

V&V Scientist	Jen Lauer
V&V Date (YYYY-MM-DD)	2012.02.27
V&V Edition	1
V&V Disposition and Status	OK
V&V Charge Time	5.0809000390768

A.2 Comments