

V&V Reference Report

L2 ASCDS Version : 8.4.3

Observation 12895 - L2 Version 1
Chandra X-Ray Center

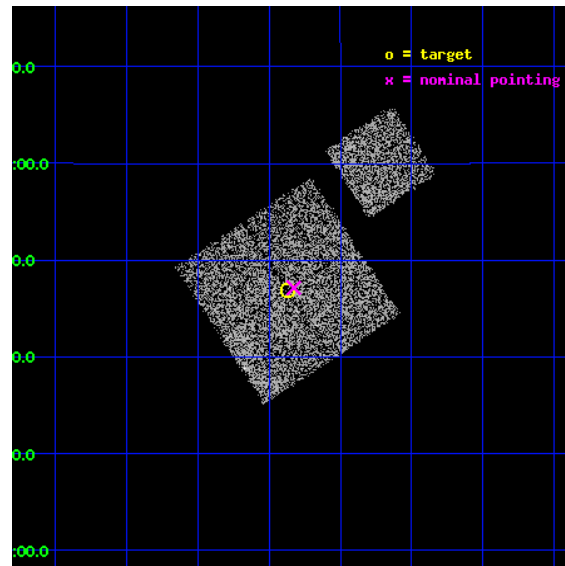
L2 Processing Date : Jan 12 2012

Contents

1	Front	2
2	OBI	3
2.1	OBI	3
2.1.1	Images	3
2.1.2	Bias	3
2.1.3	Parameters	4
2.1.4	Events	4
2.2	Compared Parameters	5
2.3	Aspect	6
2.4	Star Slots	9
2.4.1	Slot 3	9
2.4.2	Slot 4	10
2.4.3	Slot 5	11
2.4.4	Slot 6	12
2.4.5	Slot 7	13
2.5	FID Slots	14
2.5.1	Slot 0	14
2.5.2	Slot 1	15
2.5.3	Slot 2	16
A	Summary	17
A.1	Status	17
A.2	Comments	17

1 Front

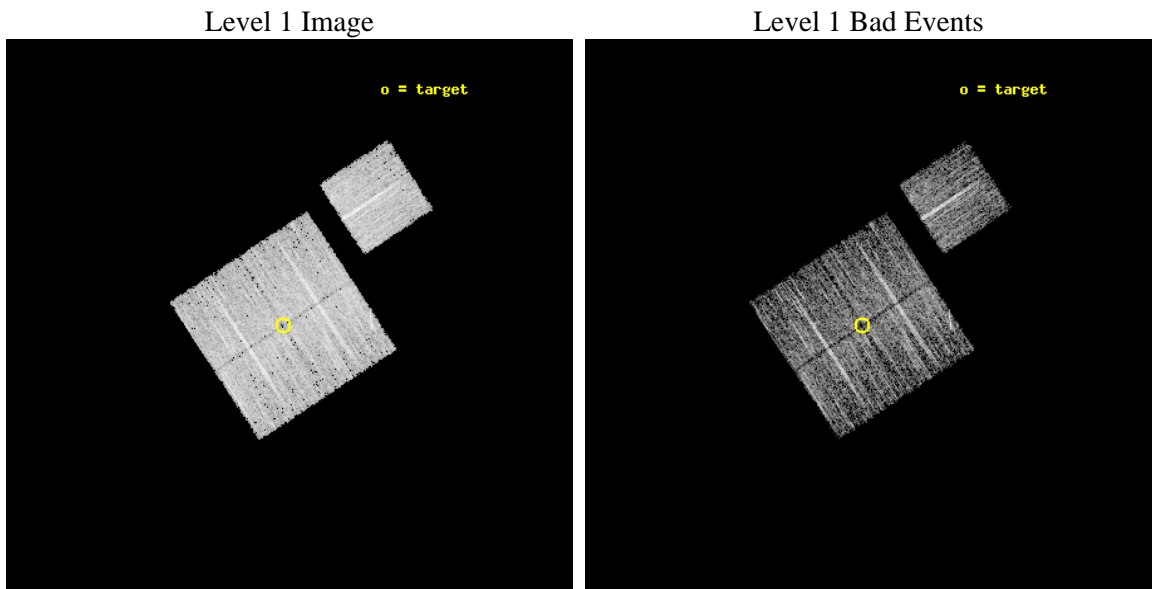
seq_num	801032	Sequence number
obs_id	12895	Observation id
title	The Outer Limits of Clusters with Chandra and Suzaku	Proposal titl
observer	Dr. Eric Miller	Principal investigator
object	A2204_Field1	Source name
dtcycle	0	
cycle	P	events from which exps? Prim/Second/Both
ra_targ	248.3424	Observer's specified target RA [deg]
dec_targ	5.781308	Observer's specified target Dec [deg]
ra_nom	248.33145161643	Nominal RA [deg]
dec_nom	5.7857457758597	Nominal Dec [deg]
roll_nom	56.758131798743	Nominal Roll [deg]
revision	1	Processing version of data
ontime	5058.9882278442	Sum of GTIs [s]
livetime	4992.8888222745	Livetime [s]
ontime0	5055.8062275052	Sum of GTIs [s]
ontime1	5058.9882278442	Sum of GTIs [s]
ontime2	5059.0292678475	Sum of GTIs [s]
ontime3	5055.9293574691	Sum of GTIs [s]
ontime6	5058.9061478376	Sum of GTIs [s]
l2events	16554	Number of level 2 events



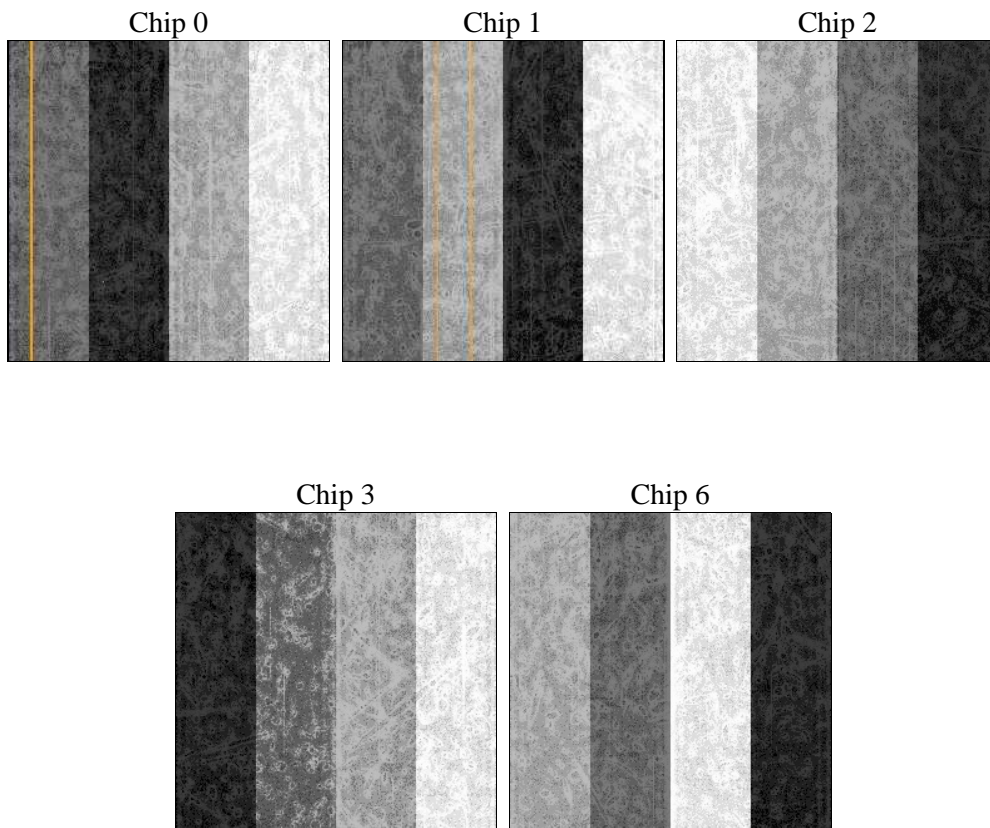
2 OBI

2.1 OBI

2.1.1 Images



2.1.2 Bias



2.1.3 Parameters

obi_num	1	Obi number	sched_exp_time	5000.093000	[s] Scheduled observation exposure time
ascdsver	8.4.3	Processing system revision	ontime	5058.9882278442	Sum of GTIs [s]
caldsver	4.4.7	 	ontime0	5055.8062275052	Sum of GTIs [s]
date	2012-01-13T03:37:30	Date and time of file creation	ontime1	5058.9882278442	Sum of GTIs [s]
revision	1	Processing version of data	ontime2	5059.0292678475	Sum of GTIs [s]
			ontime3	5055.9293574691	Sum of GTIs [s]
			ontime6	5058.9061478376	Sum of GTIs [s]
			l1events	159159	Number of level 1 events

2.1.4 Events

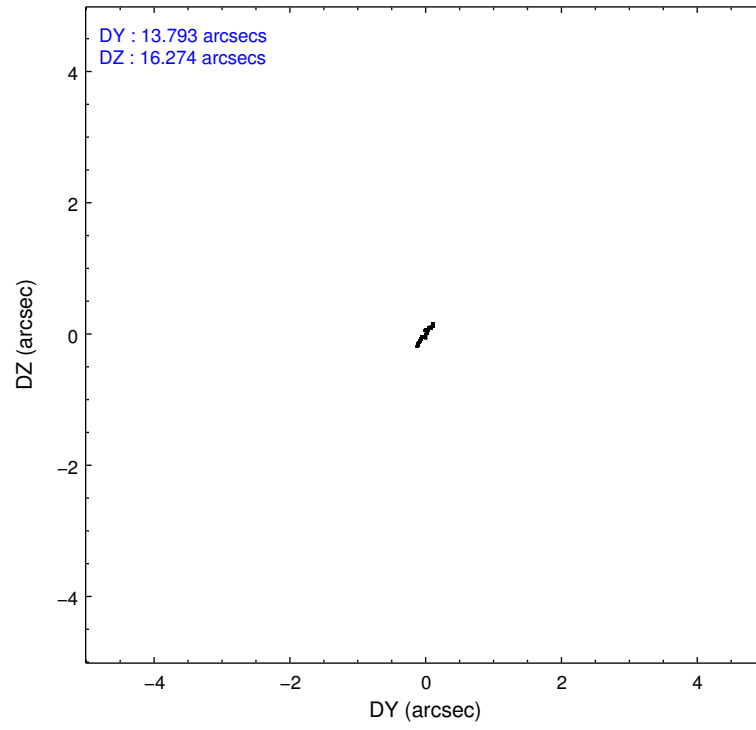
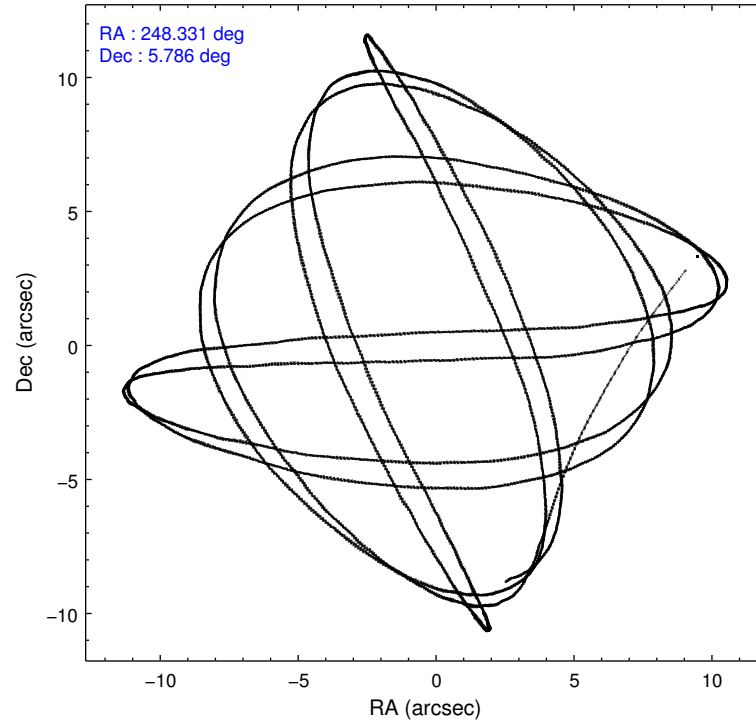
	ccd 0	ccd 1	ccd 2	ccd 3	ccd 6
level 1 events	30128	31815	30585	33241	33390
rejected events	26168	27369	27008	29526	29532
rejected %	86%	86%	88%	88%	88%

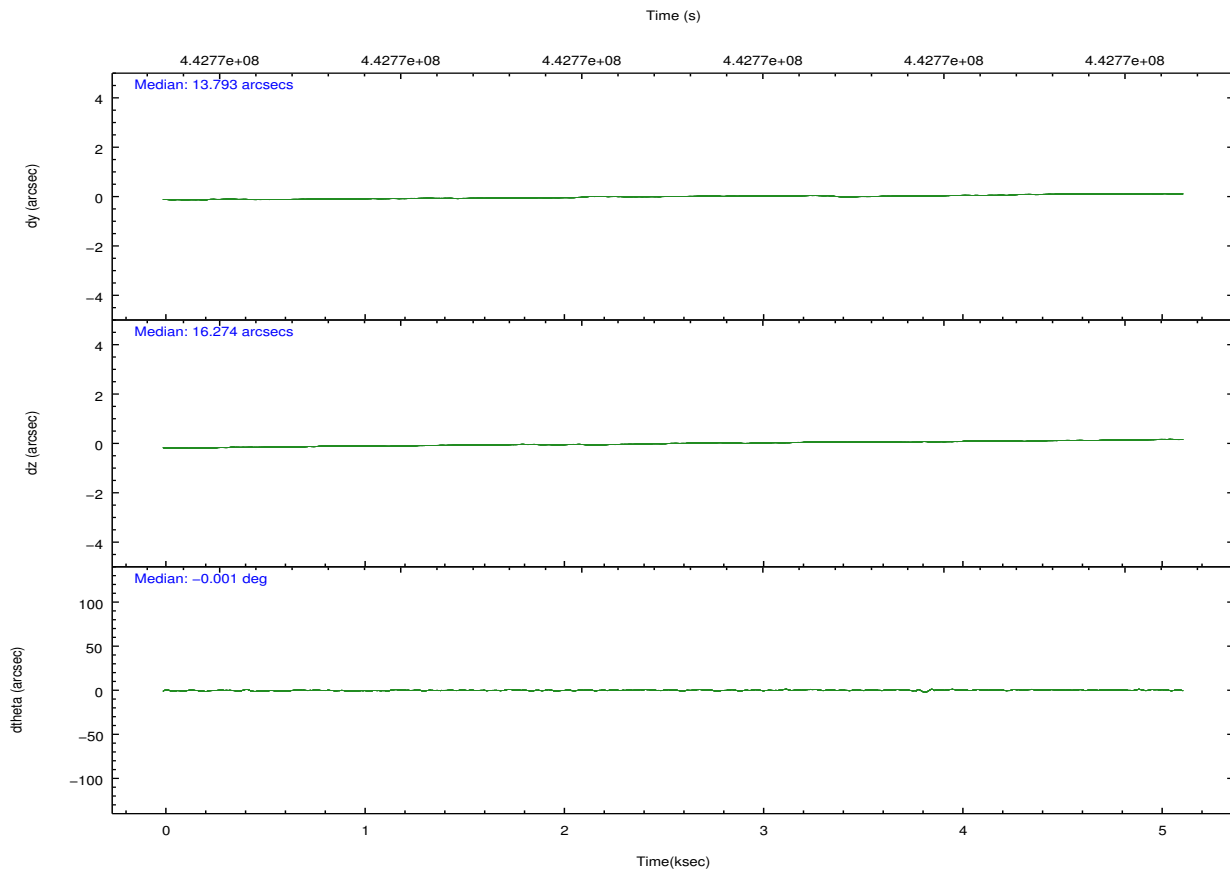
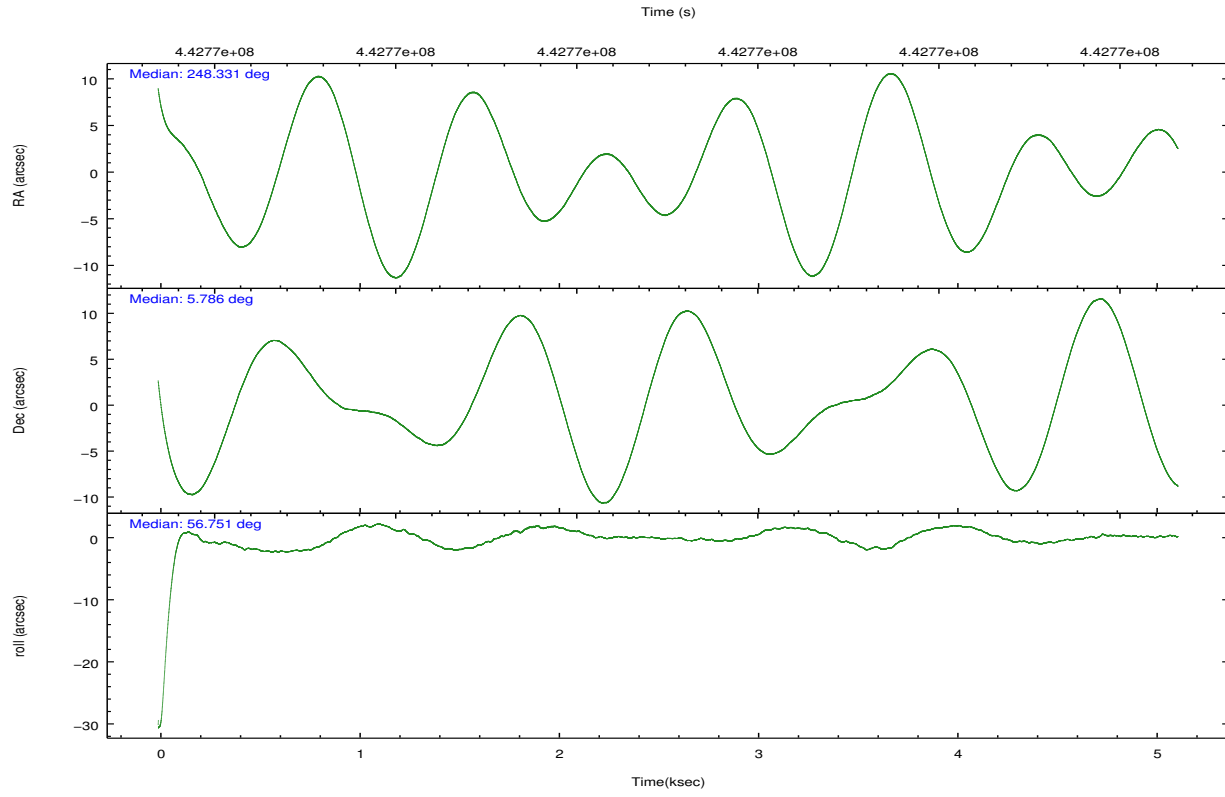
	ccd 0	ccd 1	ccd 2	ccd 3	ccd 6
grade 0 events	1476	1676	1288	1476	1397
	4%	5%	4%	4%	4%
grade 1 events	17	21	17	13	10
	0%	0%	0%	0%	0%
grade 2 events	916	1104	838	774	859
	3%	3%	2%	2%	2%
grade 3 events	451	428	344	369	385
	1%	1%	1%	1%	1%
grade 4 events	359	394	384	389	394
	1%	1%	1%	1%	1%
grade 5 events	1393	1564	1352	1585	1489
	4%	4%	4%	4%	4%
grade 6 events	760	845	726	710	825
	2%	2%	2%	2%	2%
grade 7 events	24756	25783	25636	27925	28031
	82%	81%	83%	84%	83%

2.2 Compared Parameters

Parameter	Planned	Actual	Parameter	Planned	Actual
Instrument	ACIS	ACIS	Obspar format version number	7	7
Detector	ACIS-01236	ACIS-01236	Obspar file type	PREDICTED	ACTUAL
Grating	NONE	NONE	Obspar update status	NONE	UPDATED
Data mode	VFAINT	VFAINT	CCD I0 on	Y	Y
Observation mode	POINTING	POINTING	CCD I1 on	Y	Y
[deg] Pointing RA	248.329948	248.3314516164276	CCD I2 on	Y	Y
[deg] Pointing Dec	5.758328	5.785745775859739	CCD I3 on	Y	Y
[deg] Pointing Roll	56.549689	56.75813179874298	CCD S0 on	N	N
[mm] SIM focus pos	-0.782348	-0.7809083437167272	CCD S1 on	N	N
[mm] SIM defocus	0	0.001439871863259334	CCD S2 on	O1	Y
[mm] SIM translation stage pos	-233.592463	-233.5874344608287	CCD S3 on	N	N
[mm] SIM translation stage offset	0	-0.005018542100998502	CCD S4 on	N	N
[s] Observation start time (MET)	442767048.184000	442765550.92381	CCD S5 on	N	N
Observation start date	2012-01-12T14:49:42	2012-01-12T14:25:50	Number of optional ACIS chips dropped	0	0
[s] Observation end time (MET)	442772048.184000	442772286.71166	On-chip summing requested	N	N
Observation end date	2012-01-12T16:13:02	2012-01-12T16:18:06	Subarray requested	NONE	NONE
Read mode	TIMED	TIMED	Alternating exposures requested	N	N
			[s] Primary exposure time	0.000000	3.1

2.3 Aspect



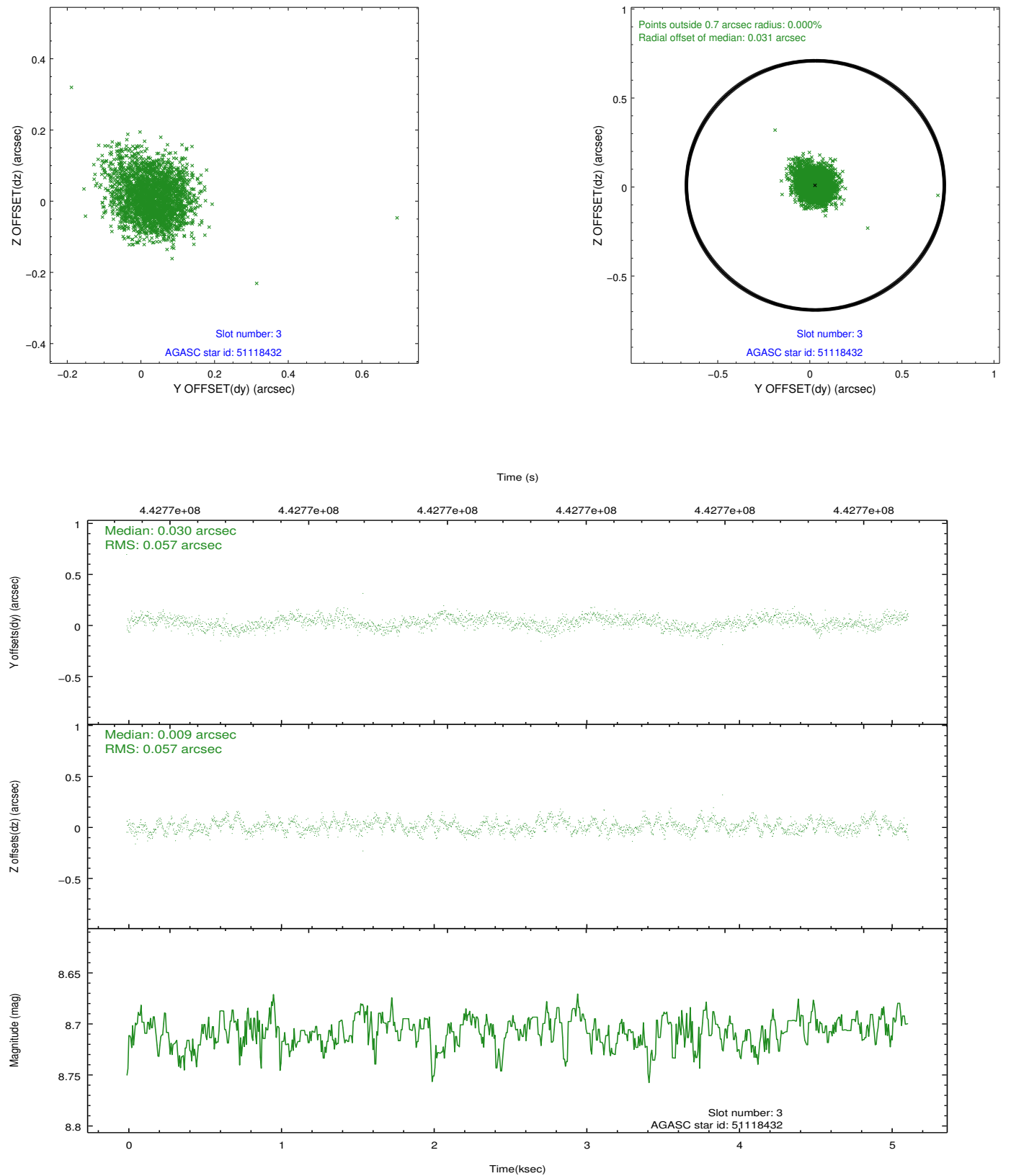


Slot Statistics

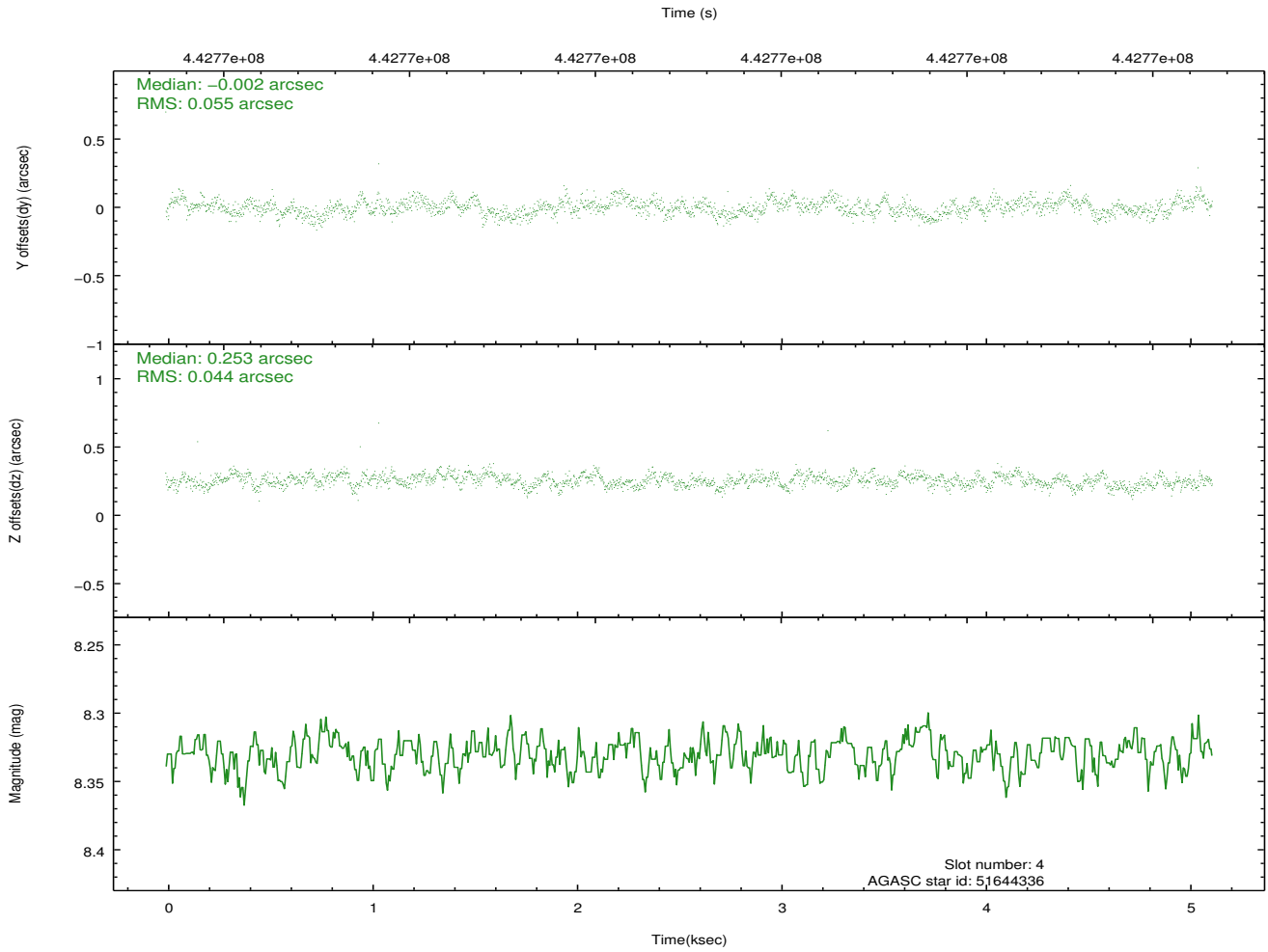
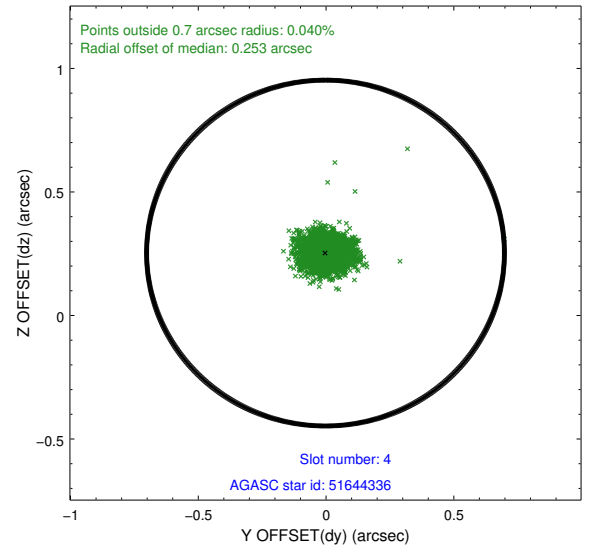
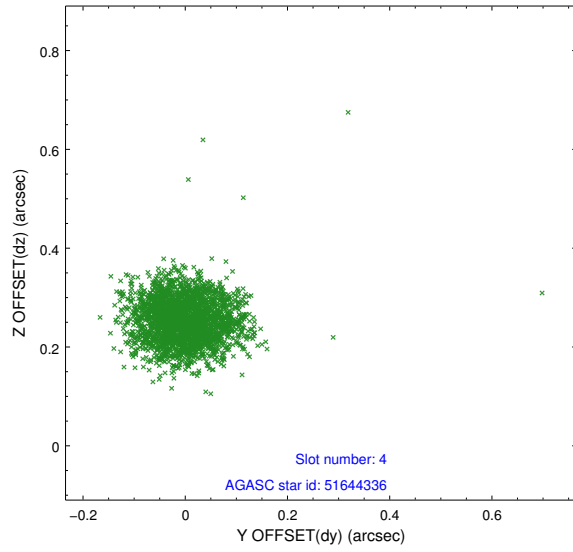
slot	status	id	mag	n_pts	med_dy	med_dz	dr1	dr2	ra	dec	mean_y	mean_z
0	FID	ACIS-I-1	7.02	1249	0.078	-0.059	0.006	0.011	0.000000	0.000000	925.78	-839.97
1	FID	ACIS-I-5	7.02	1249	-0.230	0.071	0.006	0.009	0.000000	0.000000	-1821.96	1057.09
2	FID	ACIS-I-6	7.02	1249	0.061	0.058	0.007	0.011	0.000000	0.000000	390.05	1702.90
3	GUIDE	51118432	8.71	2498	0.030	0.009	0.085	0.137	248.800425	5.517897	208.26	-1883.01
4	GUIDE	51644336	8.33	2498	-0.002	0.253	0.073	0.116	248.956466	5.661447	947.90	-2064.36
5	GUIDE	51654376	8.55	2498	-0.140	-0.312	0.079	0.123	248.262364	6.542910	2223.83	1758.11
6	GUIDE	51123920	9.03	2497	0.332	0.341	0.103	0.161	248.739818	5.153526	-1004.03	-2424.80
7	GUIDE	51651688	7.45	2494	-0.223	-0.300	0.077	0.126	248.252732	6.611281	2409.20	1921.80

2.4 Star Slots

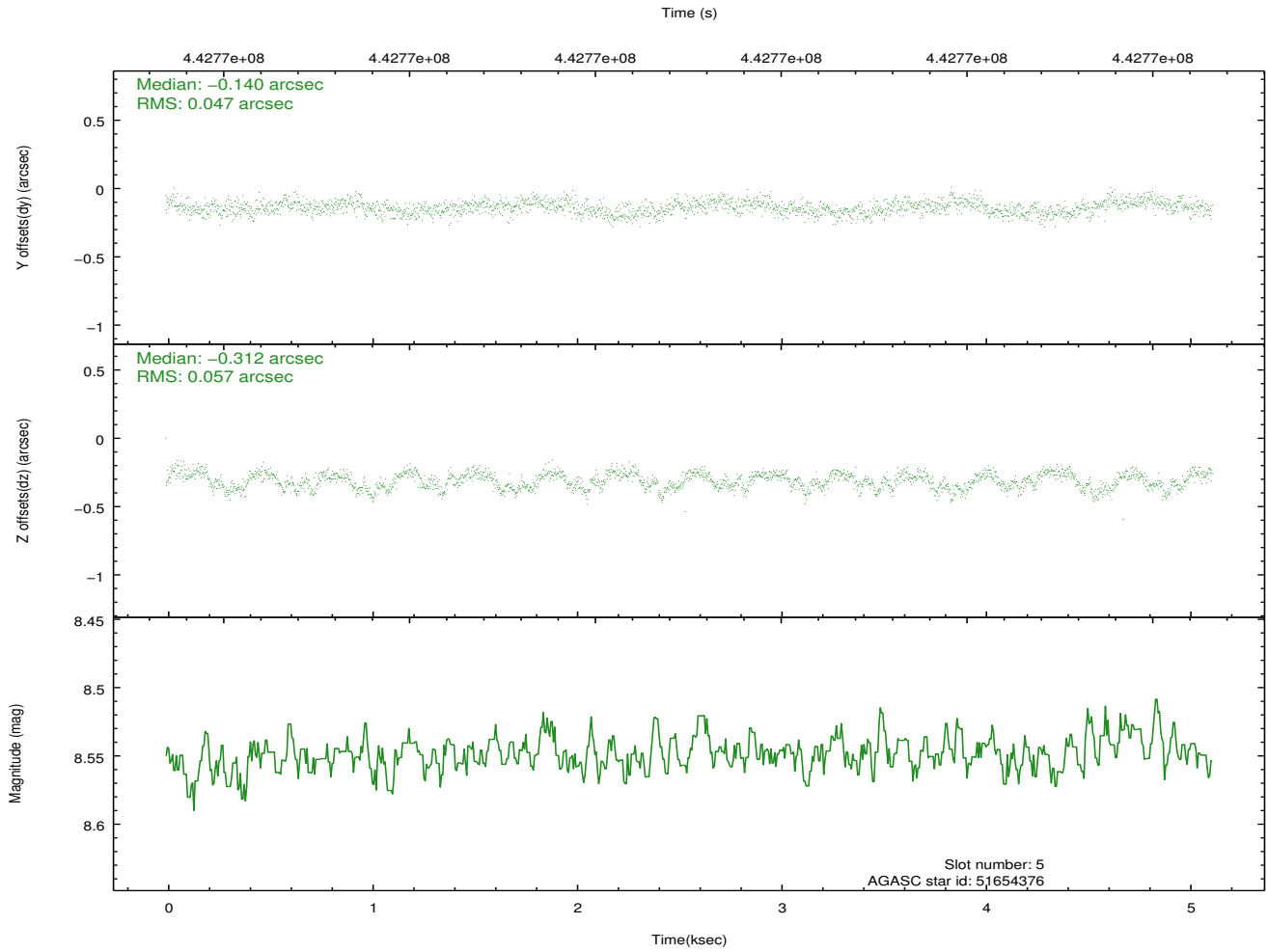
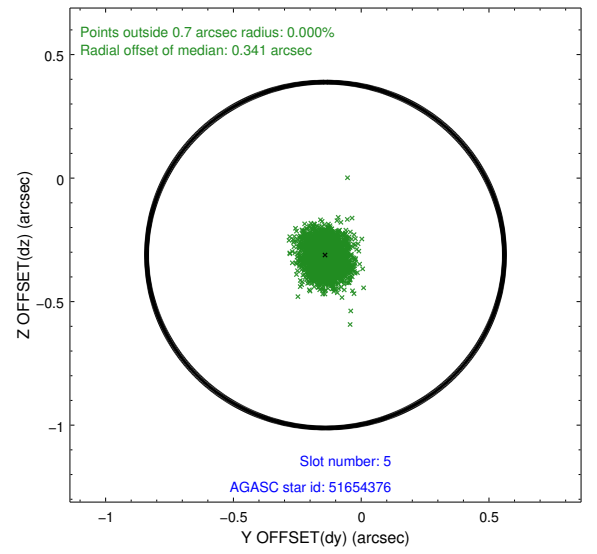
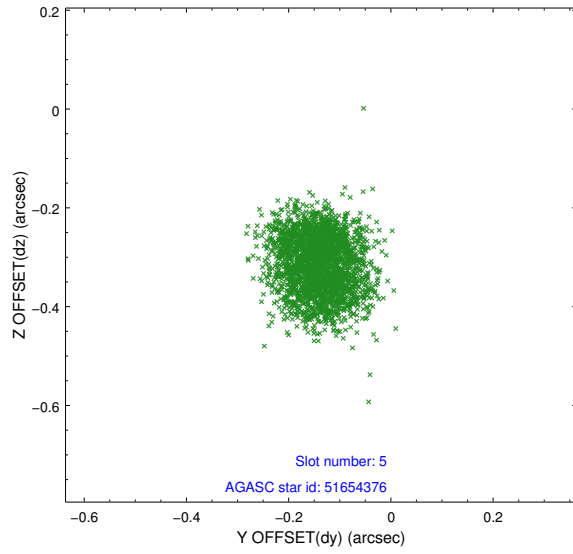
2.4.1 Slot 3



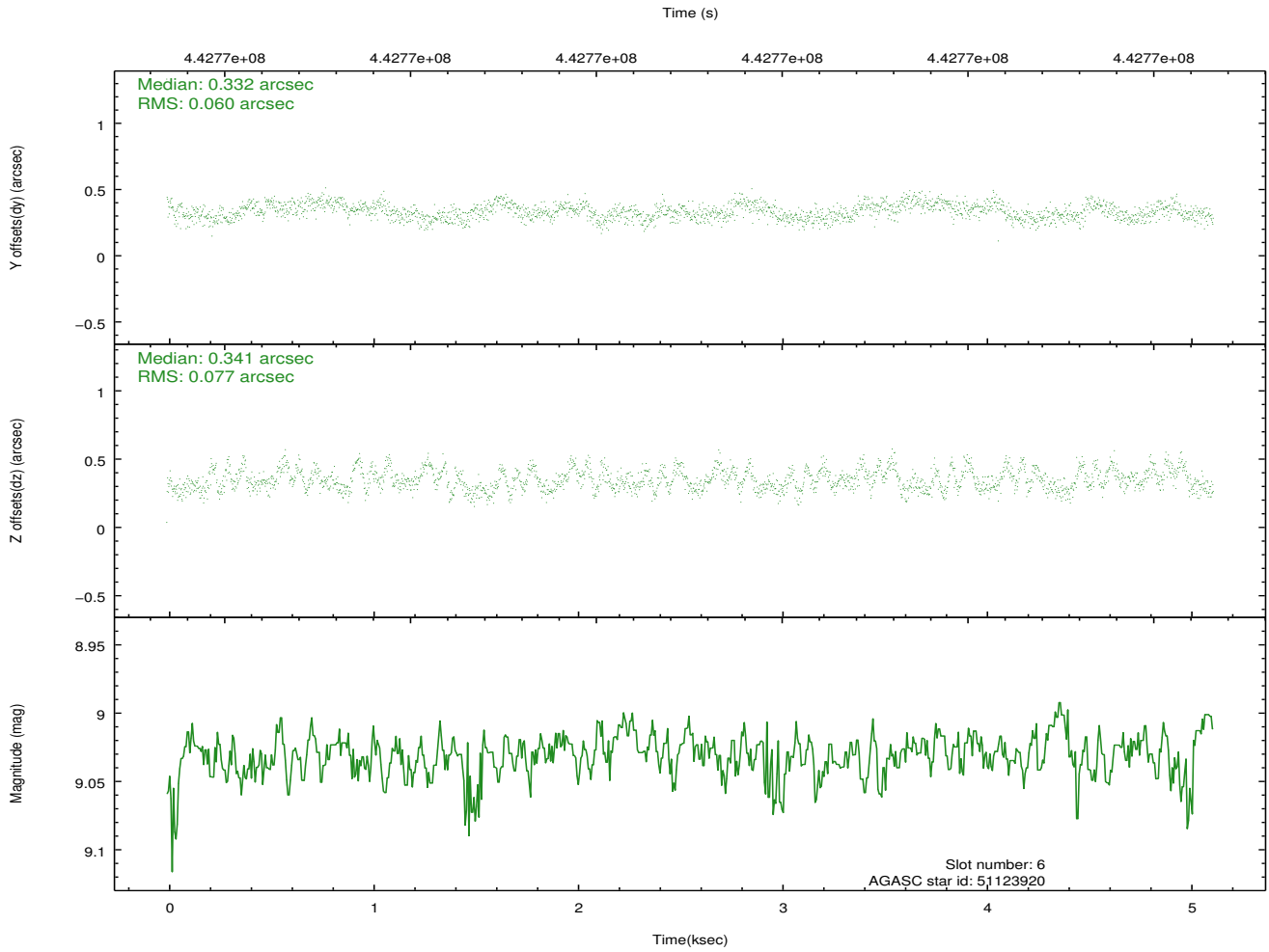
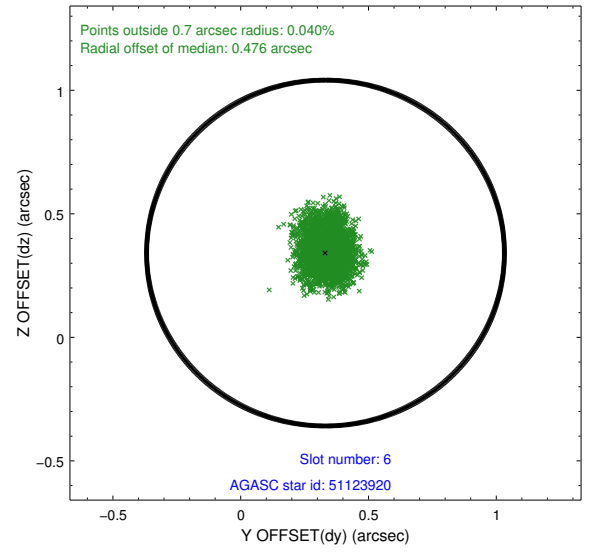
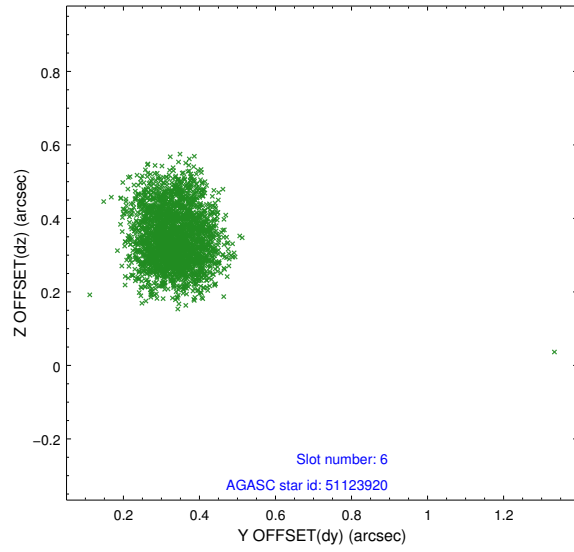
2.4.2 Slot 4



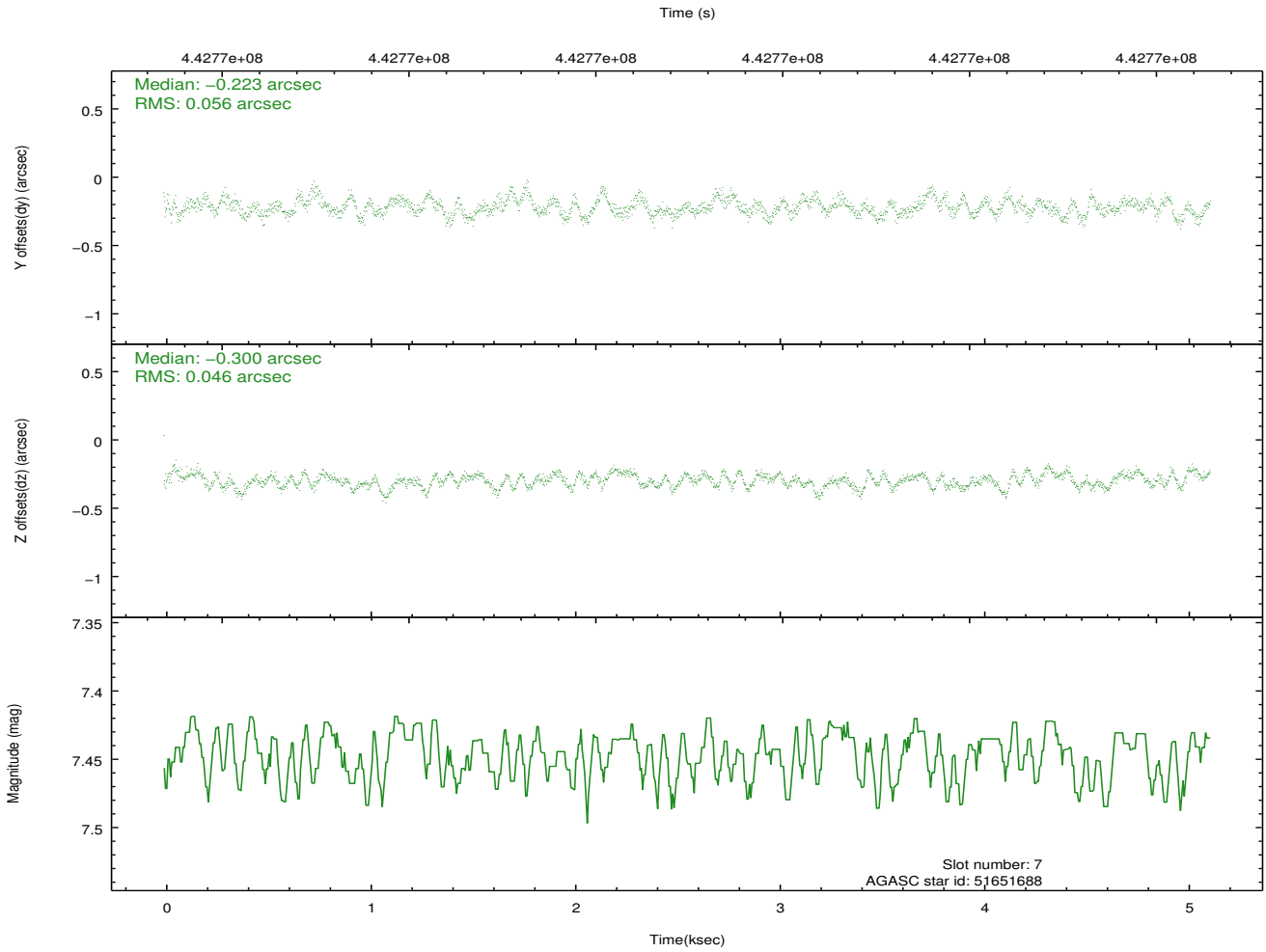
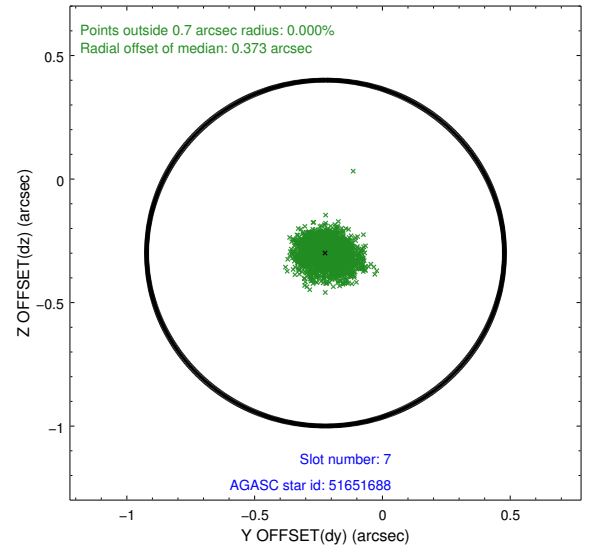
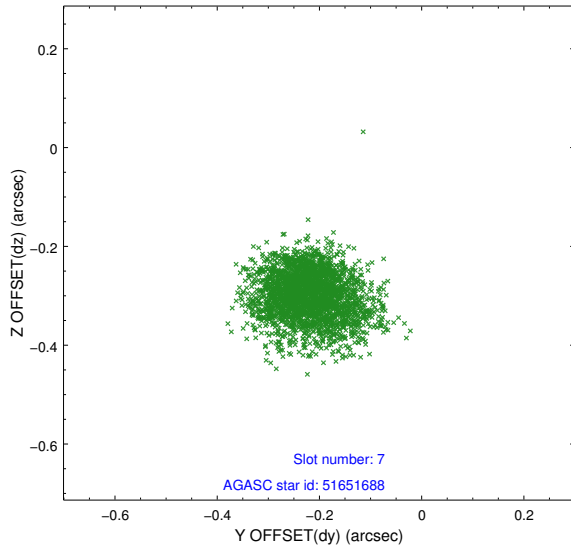
2.4.3 Slot 5



2.4.4 Slot 6

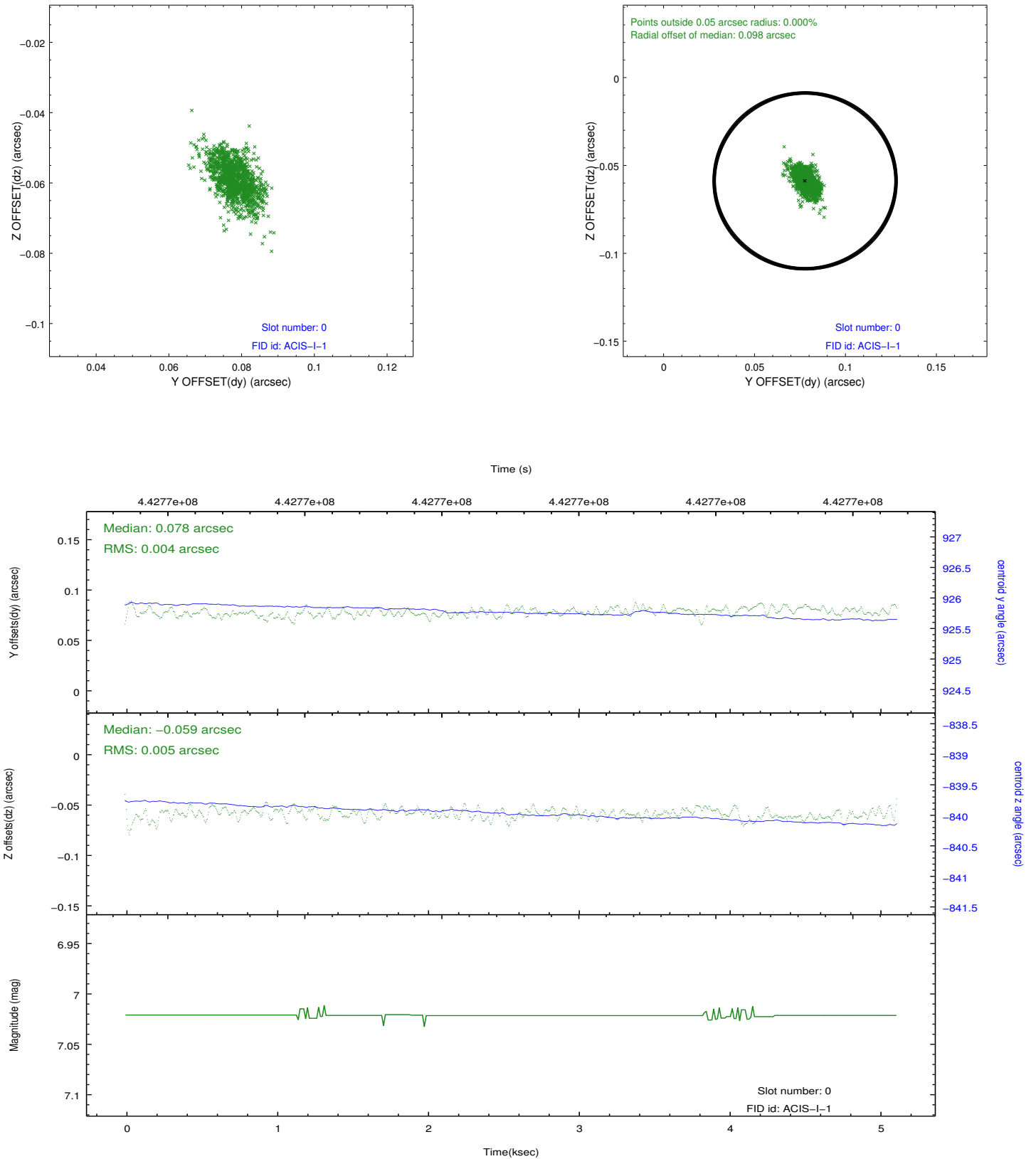


2.4.5 Slot 7

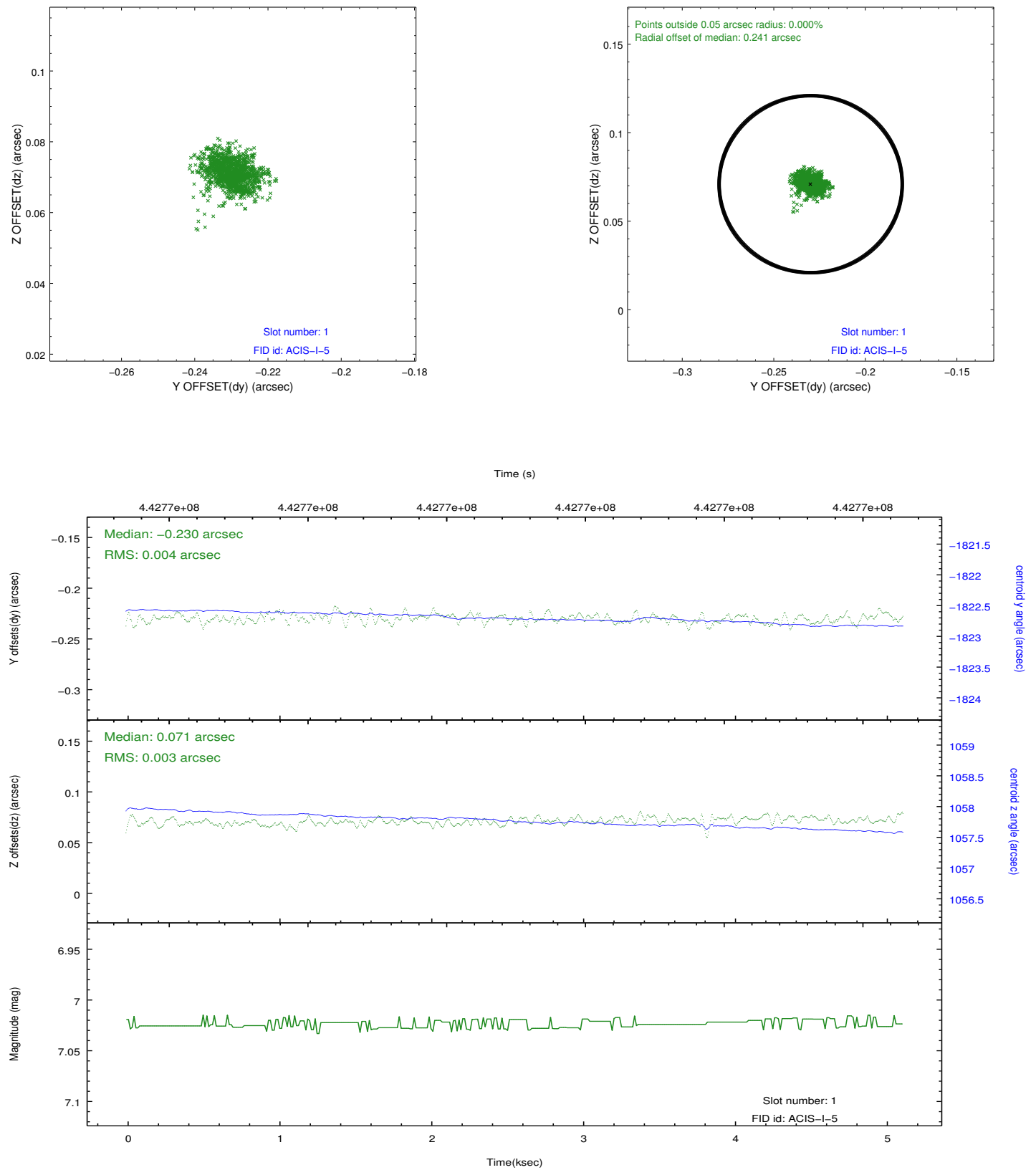


2.5 FID Slots

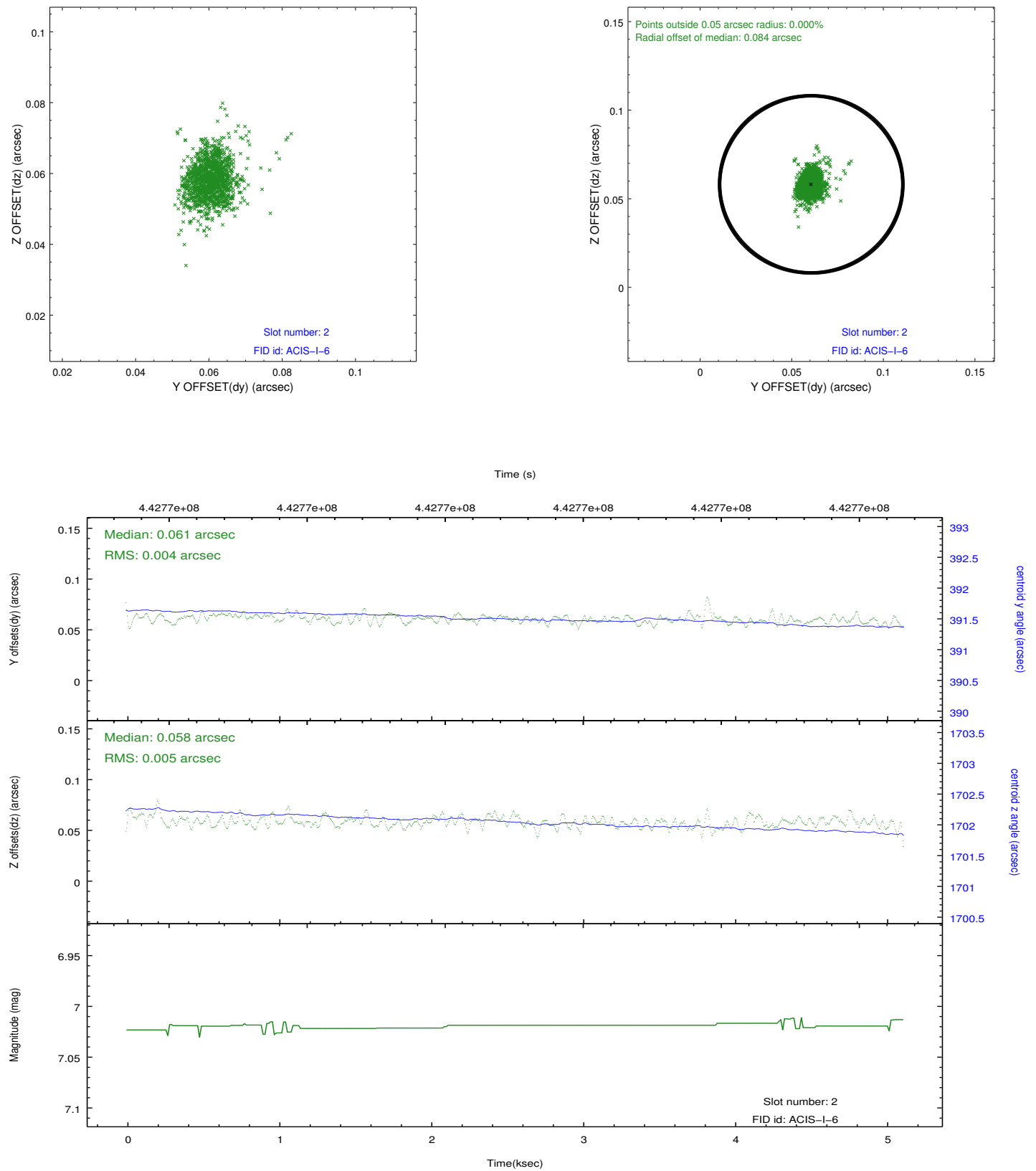
2.5.1 Slot 0



2.5.2 Slot 1



2.5.3 Slot 2



A Summary

A.1 Status

V&V Scientist	Jen Lauer
V&V Date (YYYY-MM-DD)	2012.01.13
V&V Edition	1
V&V Disposition and Status	OK
V&V Charge Time	5.0589882278442

A.2 Comments