

V&V Reference Report

L2 ASCDS Version : 8.4.4

Observation 12303 - L2 Version 2
Chandra X-Ray Center

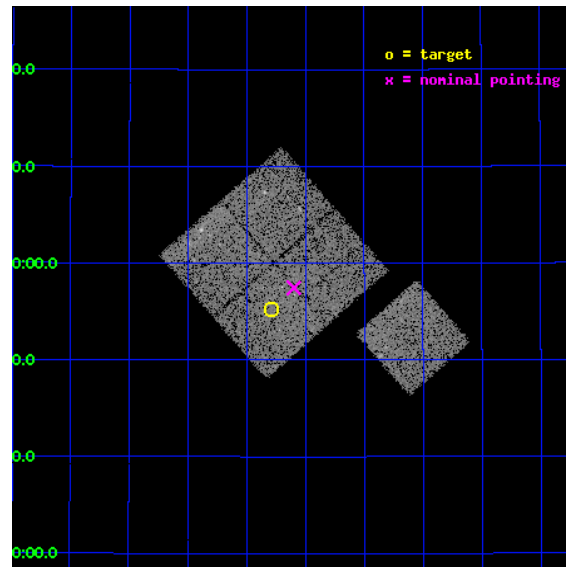
L2 Processing Date : May 3 2012

Contents

1	Front	2
2	OBI	3
2.1	OBI	3
2.1.1	Images	3
2.1.2	Bias	3
2.1.3	Parameters	4
2.1.4	Events	4
2.2	Compared Parameters	5
2.3	Aspect	6
2.4	Star Slots	9
2.4.1	Slot 3	9
2.4.2	Slot 4	10
2.4.3	Slot 5	11
2.4.4	Slot 6	12
2.4.5	Slot 7	13
2.5	FID Slots	14
2.5.1	Slot 0	14
2.5.2	Slot 1	15
2.5.3	Slot 2	16
A	Summary	17
A.1	Status	17
A.2	Comments	17

1 Front

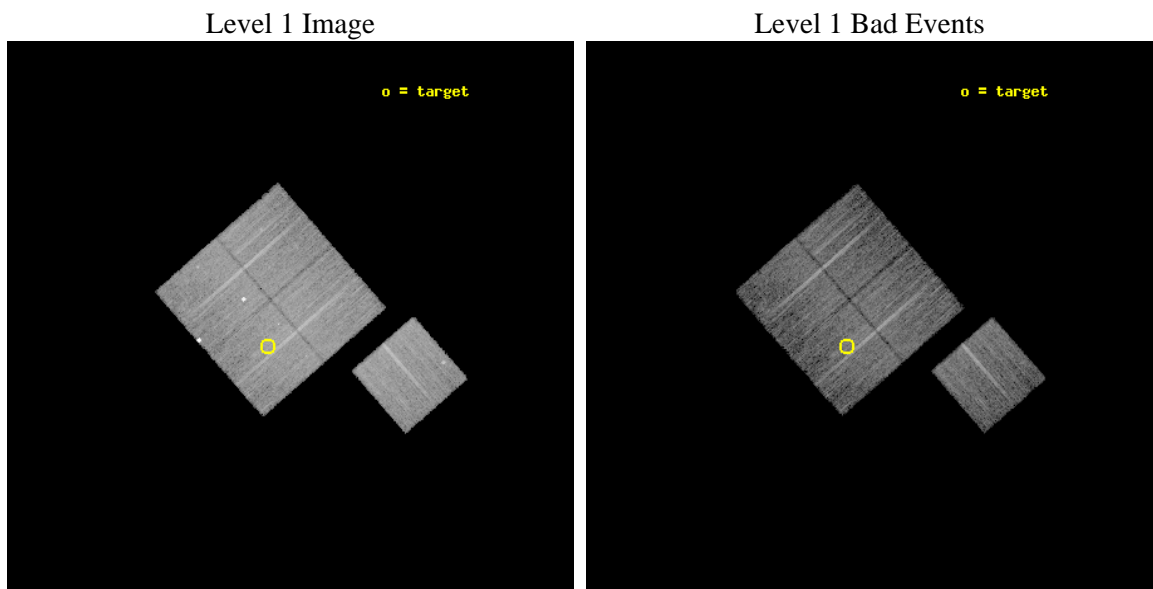
seq_num	801008	Sequence number
obs_id	12303	Observation id
title	The X-ray Properties of Weak-Lensing Selected Galaxy Clusters	Prop
observer	MR Paul Giles	Principal investigator
object	SLJ1647.7+3455	Source name
dtcycle	0	
cycle	P	events from which exps? Prim/Second/Both
ra_targ	251.947917	Observer's specified target RA [deg]
dec_targ	34.920278	Observer's specified target Dec [deg]
ra_nom	251.89958724729	Nominal RA [deg]
dec_nom	34.957552860681	Nominal Dec [deg]
roll_nom	138.77994563067	Nominal Roll [deg]
revision	2	Processing version of data
ontime	14005.749996185	Sum of GTIs [s]
livetime	13822.754561602	Livetime [s]
ontime0	14008.767896414	Sum of GTIs [s]
ontime1	14008.808936417	Sum of GTIs [s]
ontime2	14008.84997642	Sum of GTIs [s]
ontime3	14005.749996185	Sum of GTIs [s]
ontime6	14008.726856411	Sum of GTIs [s]
l2events	40966	Number of level 2 events



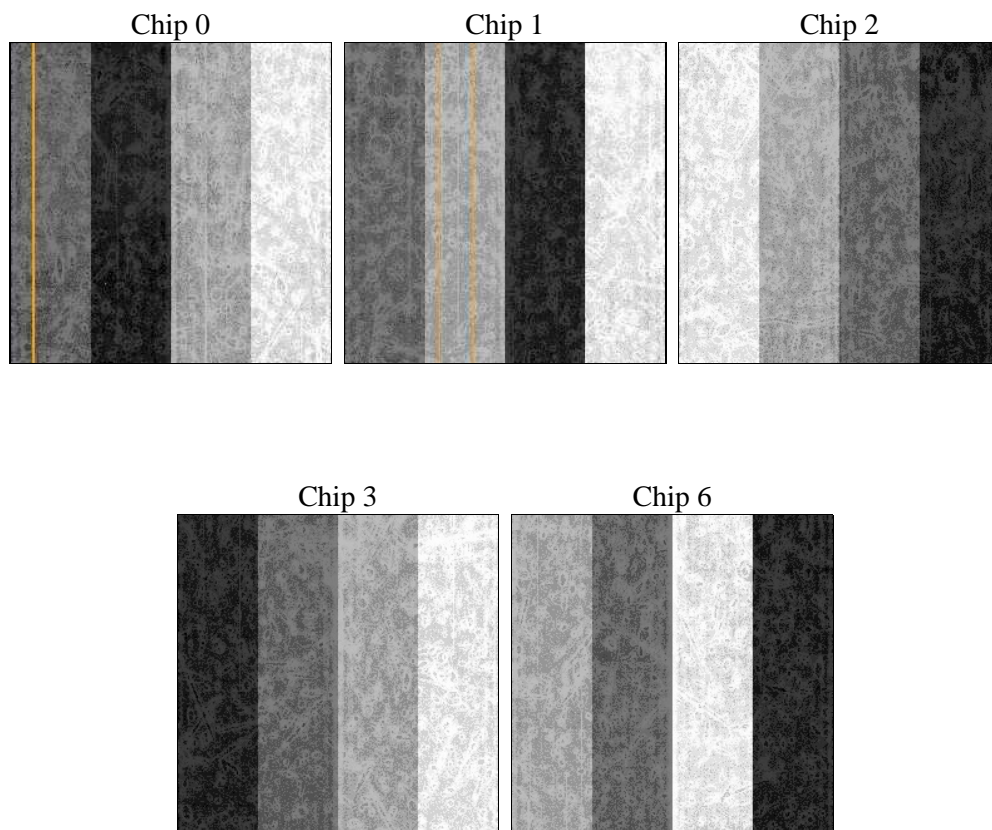
2 OBI

2.1 OBI

2.1.1 Images



2.1.2 Bias



2.1.3 Parameters

obi_num	2	Obi number	sched_exp_time	14000.000000	[s] Scheduled observation exposure time
ascdsver	8.4.4	Processing system revision	ontime	14005.749996185	Sum of GTIs [s]
caldsver	4.4.9	 	ontime0	14008.767896414	Sum of GTIs [s]
date	2012-05-03T22:33:42	Date and time of file creation	ontime1	14008.808936417	Sum of GTIs [s]
revision	2	Processing version of data	ontime2	14008.84997642	Sum of GTIs [s]
			ontime3	14005.749996185	Sum of GTIs [s]
			ontime6	14008.726856411	Sum of GTIs [s]
			l1events	401242	Number of level 1 events

2.1.4 Events

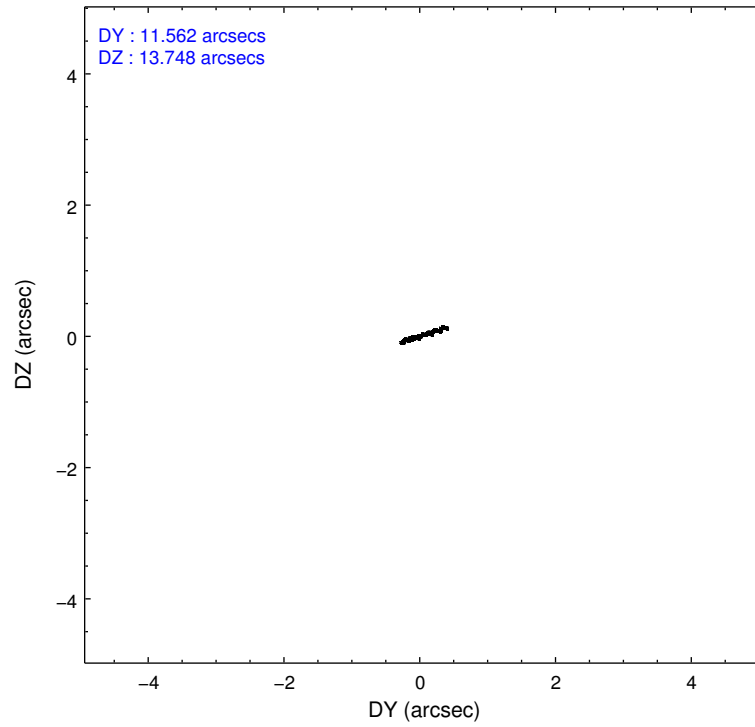
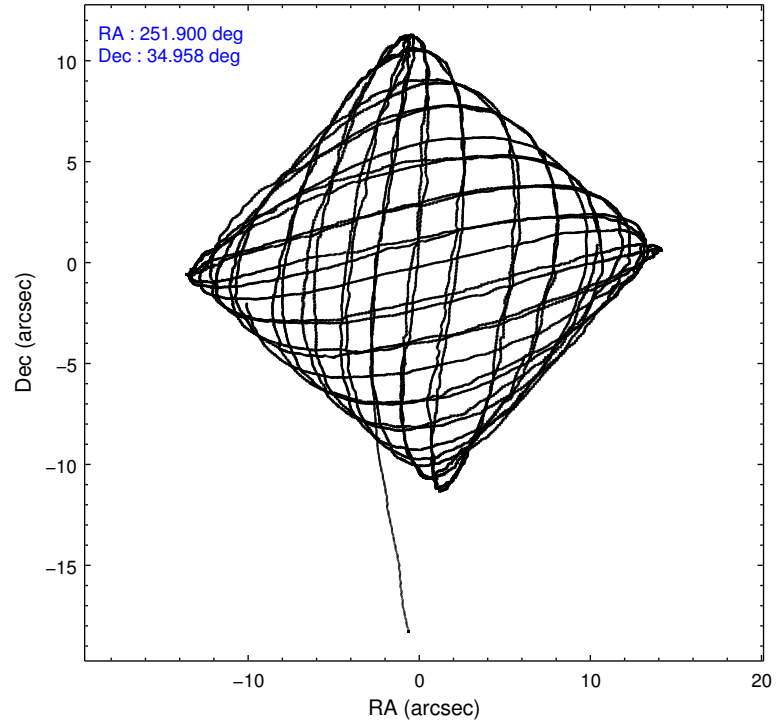
	ccd 0	ccd 1	ccd 2	ccd 3	ccd 6
level 1 events	72452	83993	81436	80429	82932
rejected events	62993	65857	72399	71176	72772
rejected %	86%	78%	88%	88%	87%

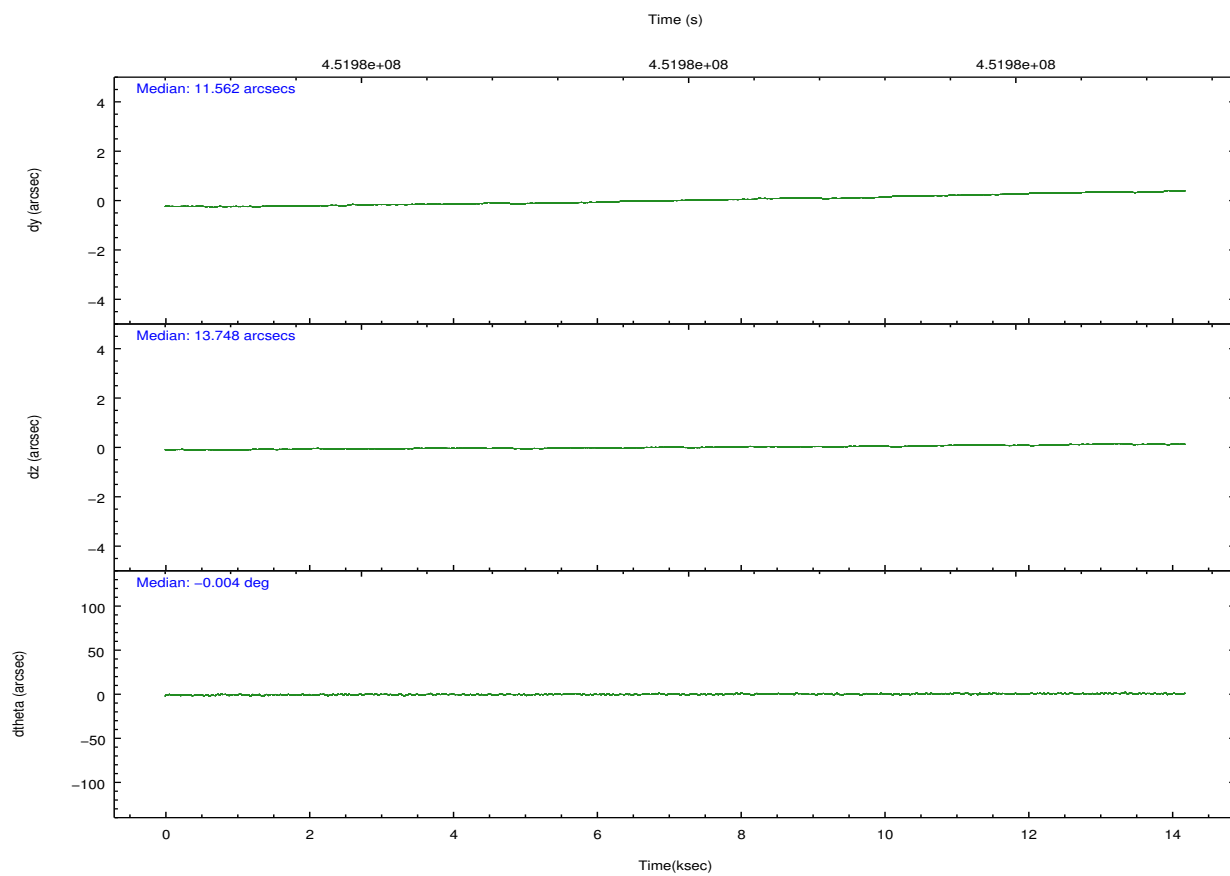
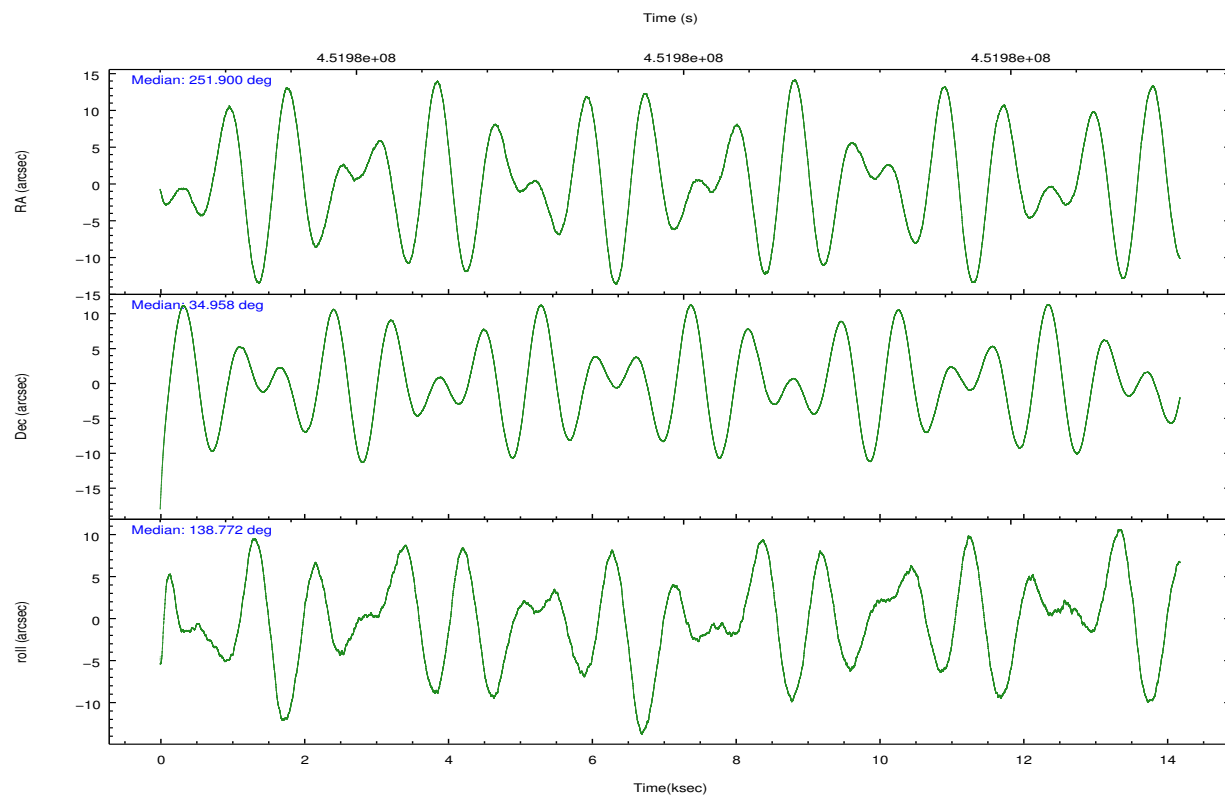
	ccd 0	ccd 1	ccd 2	ccd 3	ccd 6
grade 0 events	3334	8194	3128	3493	3347
	4%	9%	3%	4%	4%
grade 1 events	42	54	48	39	45
	0%	0%	0%	0%	0%
grade 2 events	2274	5741	2249	1974	2613
	3%	6%	2%	2%	3%
grade 3 events	977	1025	960	941	996
	1%	1%	1%	1%	1%
grade 4 events	937	1004	948	968	950
	1%	1%	1%	1%	1%
grade 5 events	3670	3801	3525	4109	3993
	5%	4%	4%	5%	4%
grade 6 events	1938	2175	1755	1878	2257
	2%	2%	2%	2%	2%
grade 7 events	59280	61999	68823	67027	68731
	81%	73%	84%	83%	82%

2.2 Compared Parameters

Parameter	Planned	Actual	Parameter	Planned	Actual
Instrument	ACIS	ACIS	Obspar format version number	7	7
Detector	ACIS-01236	ACIS-01236	Obspar file type	PREDICTED	ACTUAL
Grating	NONE	NONE	Obspar update status	NONE	UPDATED
Data mode	VFAINT	VFAINT	Number of optional ACIS chips dropped	0	0
Observation mode	POINTING	POINTING	On-chip summing requested	N	N
[deg] Pointing RA	251.932533	251.8995872472916	Subarray requested	NONE	NONE
[deg] Pointing Dec	34.952330	34.95755286068065	Alternating exposures requested	N	N
[deg] Pointing Roll	138.552394	138.779945630669	[s] Primary exposure time	0.000000	3.1
[mm] SIM focus pos	-0.782348	-0.7809083437167272			
[mm] SIM defocus	0	0.001439871863259334			
[mm] SIM translation stage pos	-225.792463	-225.7829997647864			
[mm] SIM translation stage offset	-7.8	-7.809453238143249			
[s] Observation start time (MET)	451972875.184000	451971917.424			
Observation start date	2012-04-28T04:00:09	2012-04-28T03:45:17			
[s] Observation end time (MET)	451986875.184000	451987882.31234			
Observation end date	2012-04-28T07:53:29	2012-04-28T08:11:22			
Read mode	TIMED	TIMED			

2.3 Aspect



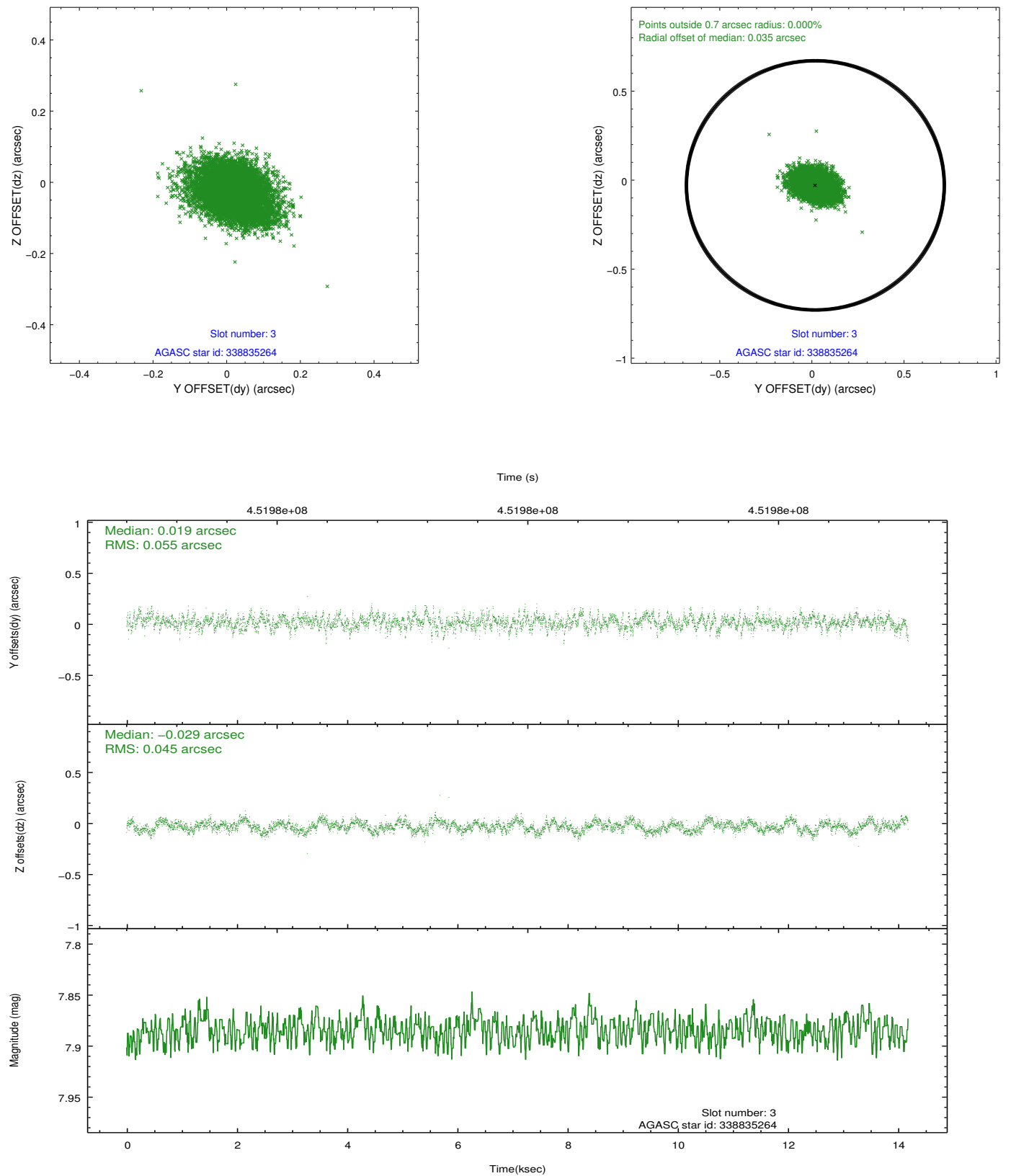


Slot Statistics

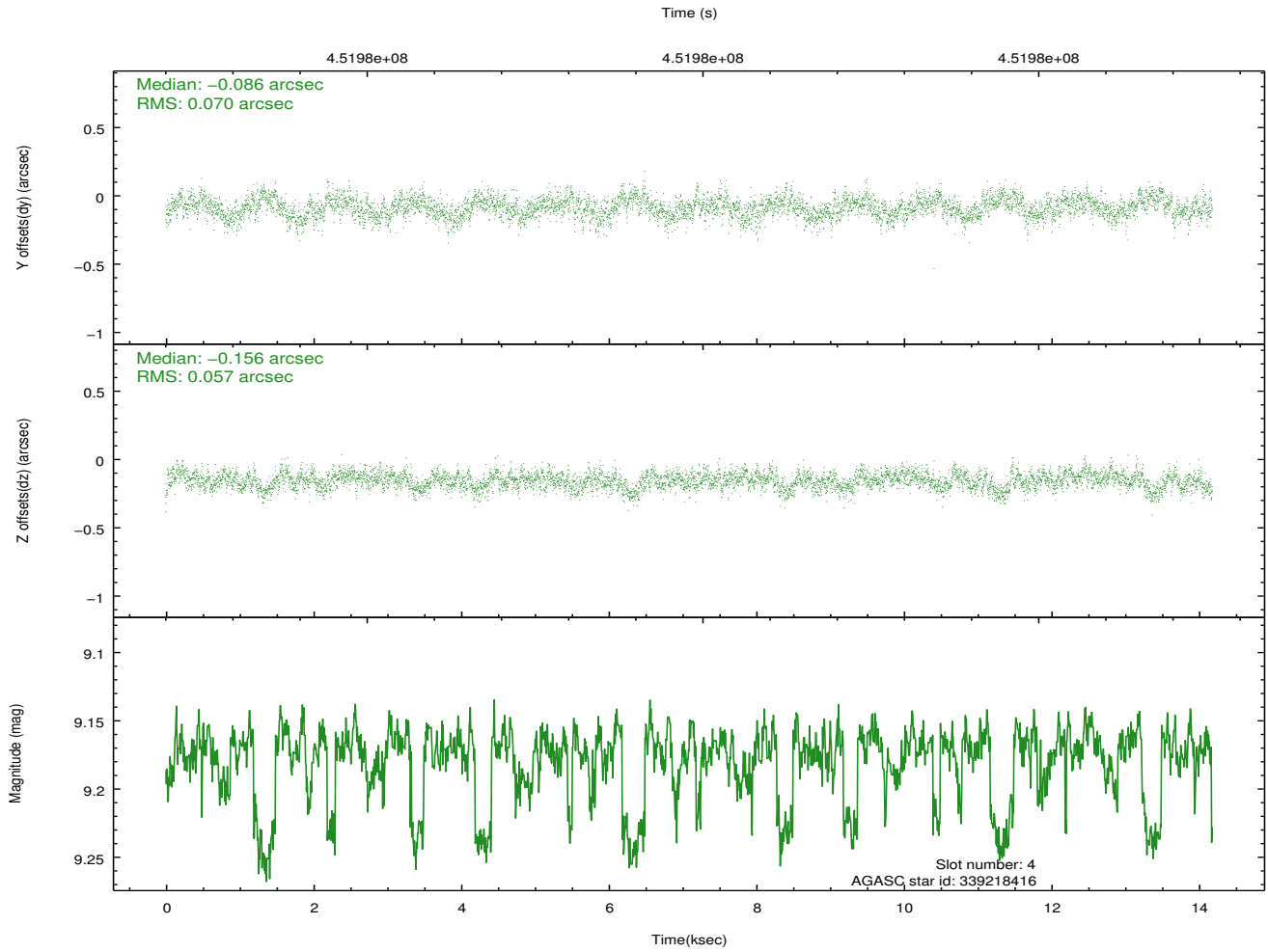
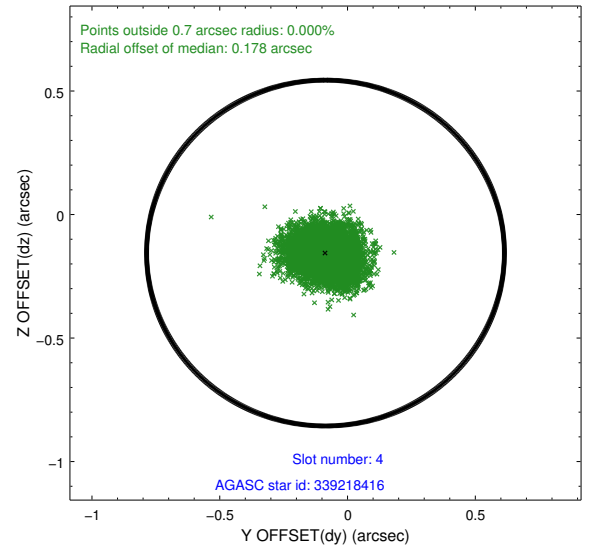
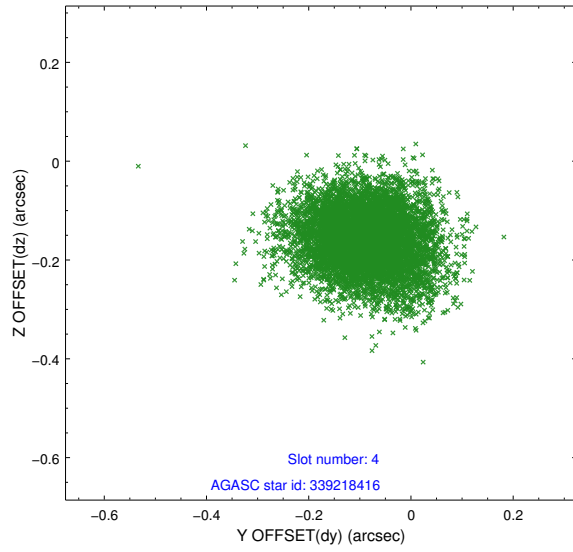
slot	status	id	mag	n_pts	med_dy	med_dz	dr1	dr2	ra	dec	mean_y	mean_z
0	FID	ACIS-I-1	7.07	3459	0.099	-0.116	0.008	0.015	0.000000	0.000000	927.96	-997.73
1	FID	ACIS-I-4	6.98	3459	0.058	0.057	0.012	0.022	0.000000	0.000000	2147.64	903.06
2	FID	ACIS-I-5	7.06	3458	-0.255	0.130	0.011	0.020	0.000000	0.000000	-1820.04	900.25
3	GUIDE	338835264	7.88	6918	0.019	-0.029	0.074	0.126	251.919565	34.226279	-1701.56	1984.67
4	GUIDE	339218416	9.17	6891	-0.086	-0.156	0.095	0.158	251.185123	35.007242	1787.63	1305.50
5	GUIDE	340401160	9.35	6908	0.220	0.188	0.110	0.176	252.460112	35.243739	-464.66	-1815.75
6	GUIDE	340406200	6.71	6919	-0.151	0.246	0.081	0.129	252.267621	34.956301	-730.20	-666.58
7	GUIDE	338839992	8.48	6912	-0.000	-0.246	0.084	0.137	251.528053	34.360854	-506.71	2389.67

2.4 Star Slots

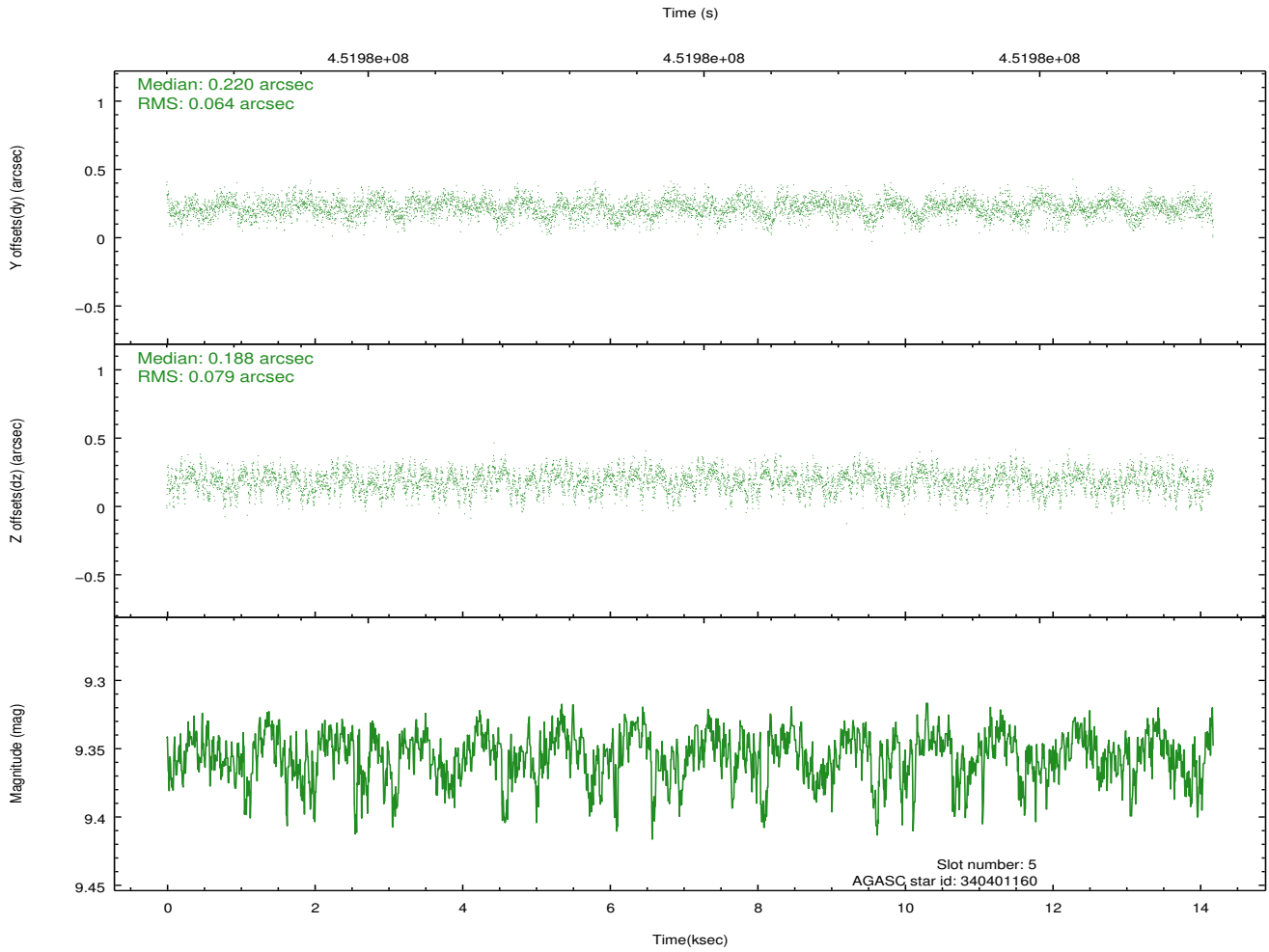
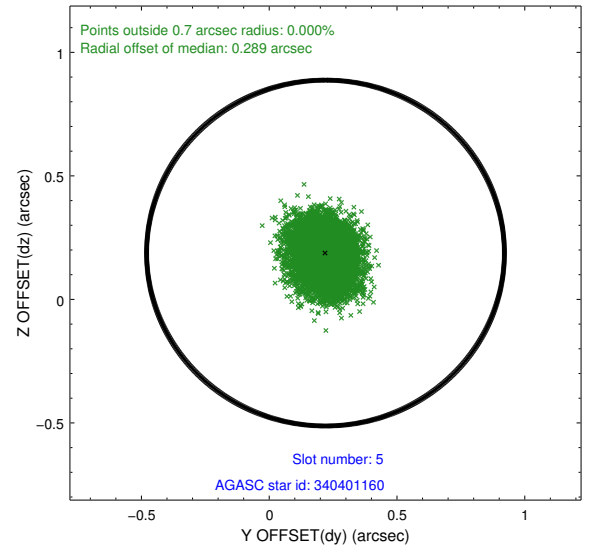
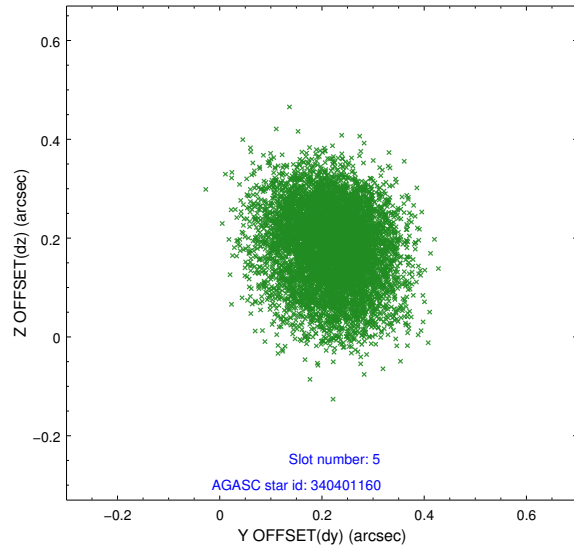
2.4.1 Slot 3



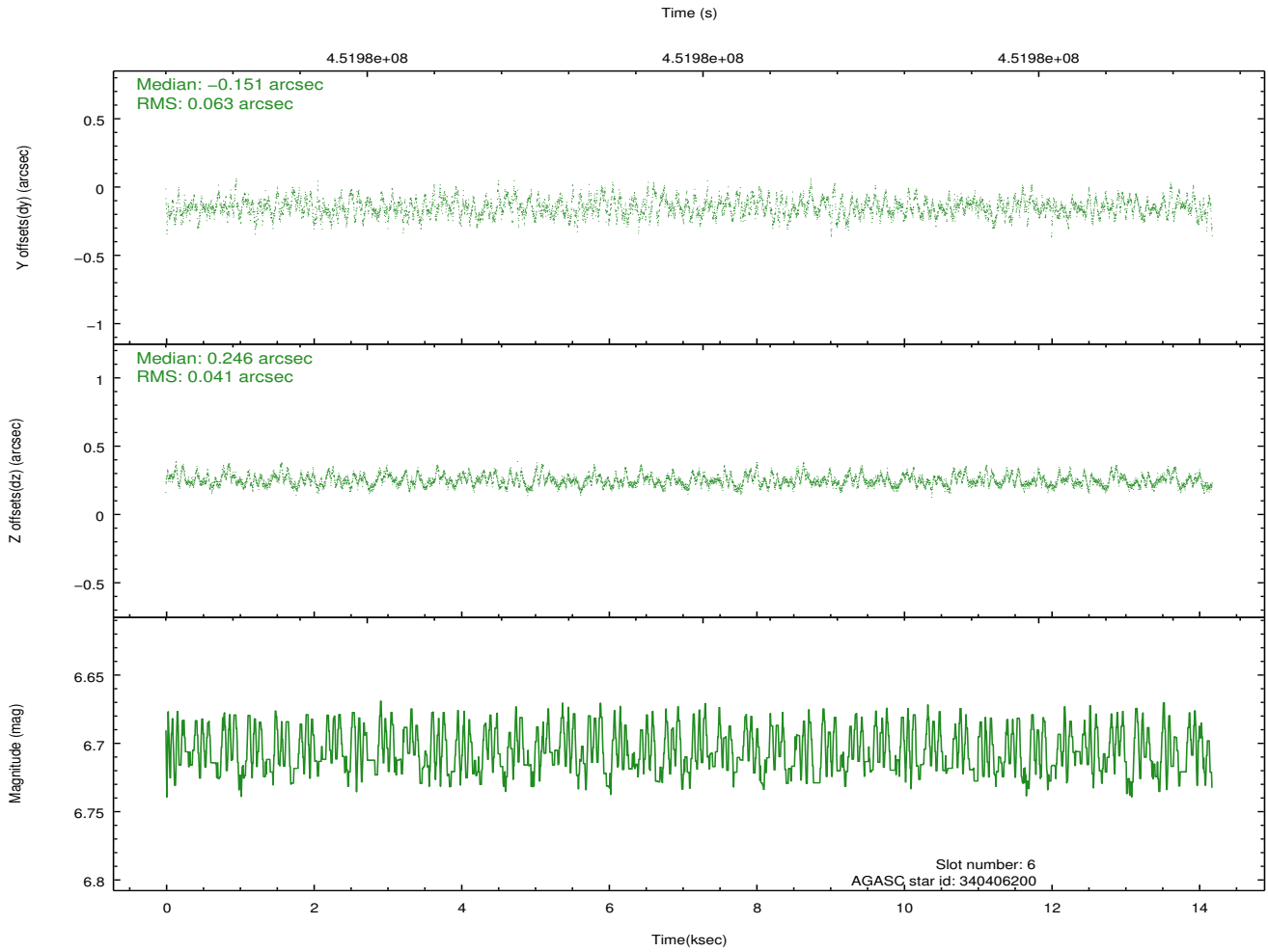
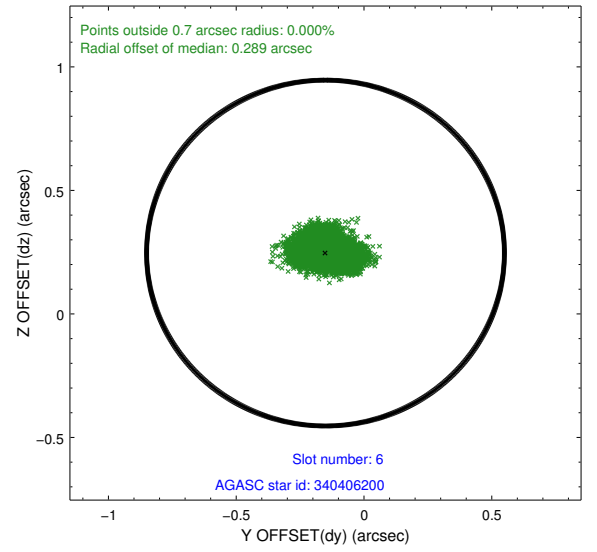
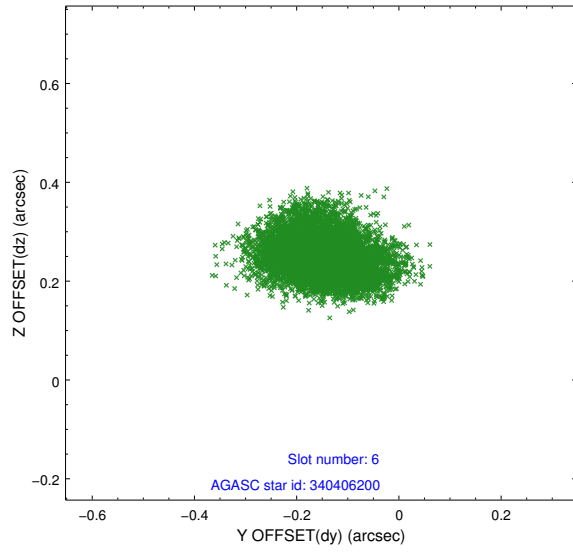
2.4.2 Slot 4



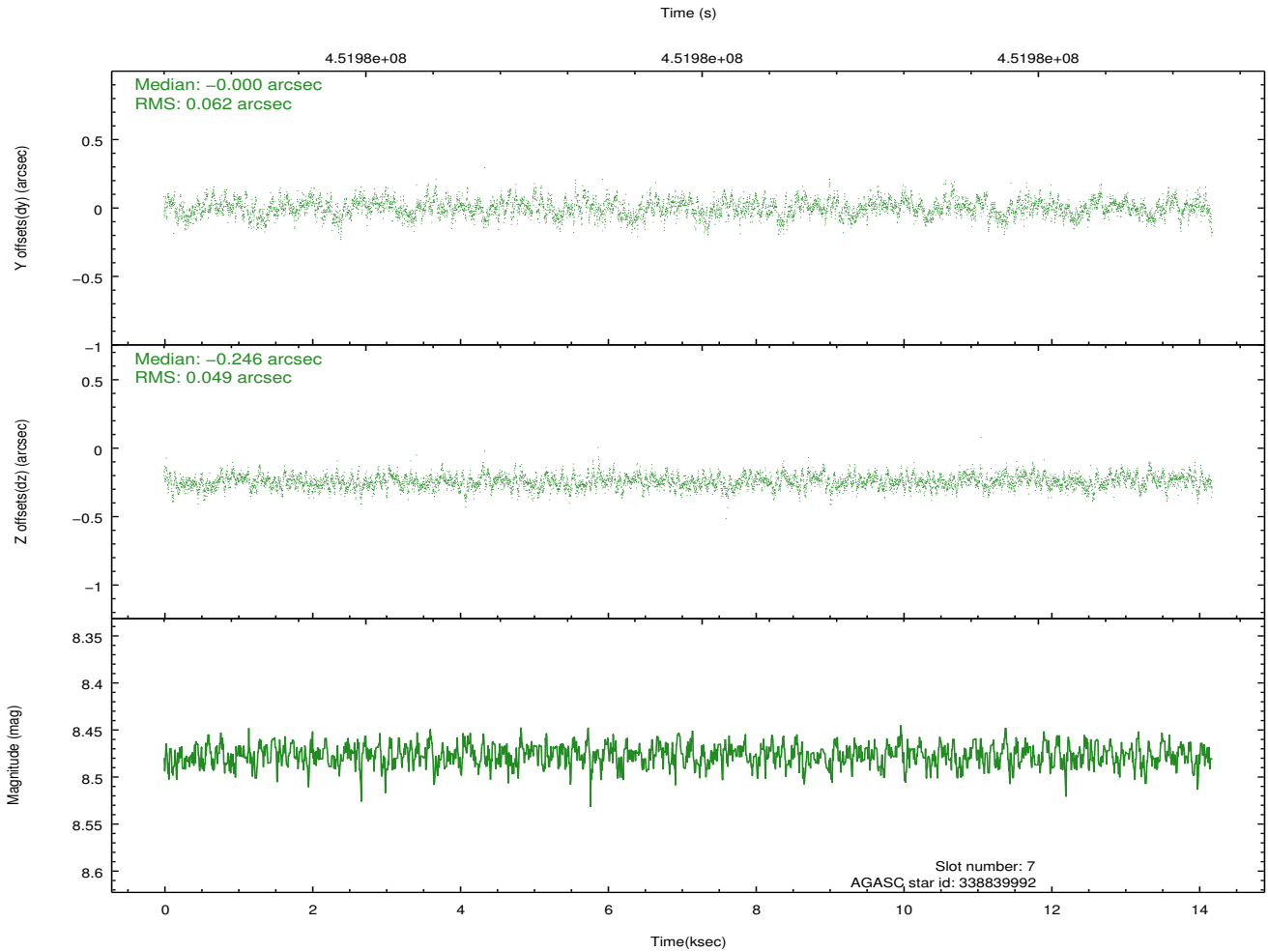
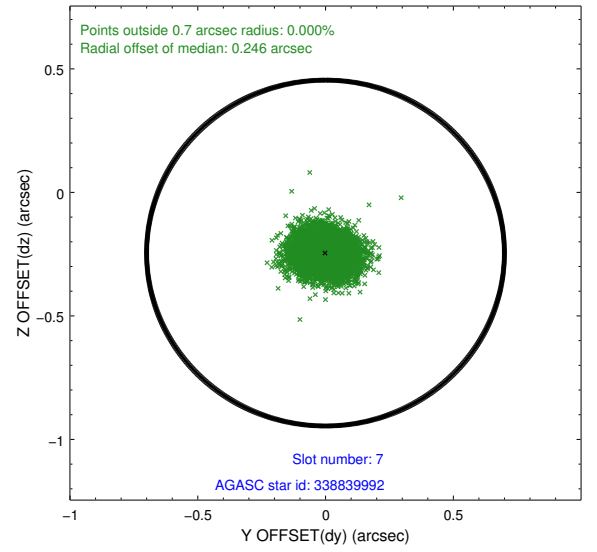
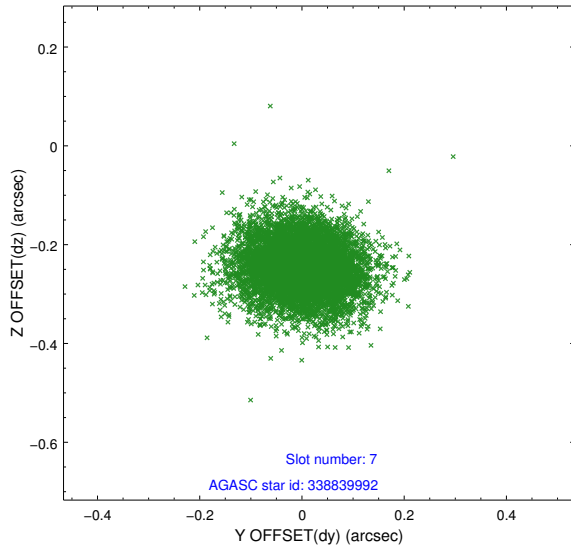
2.4.3 Slot 5



2.4.4 Slot 6

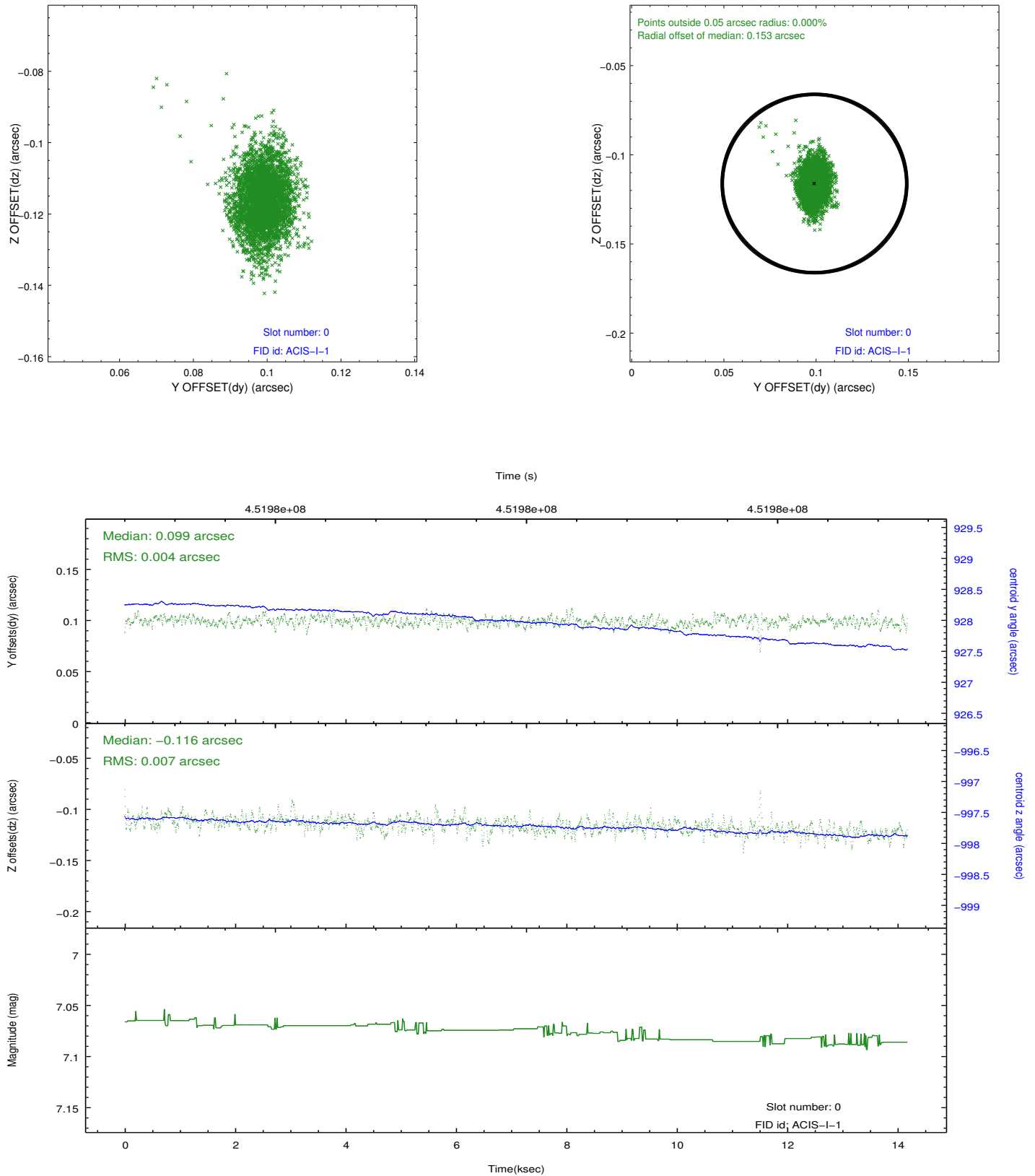


2.4.5 Slot 7

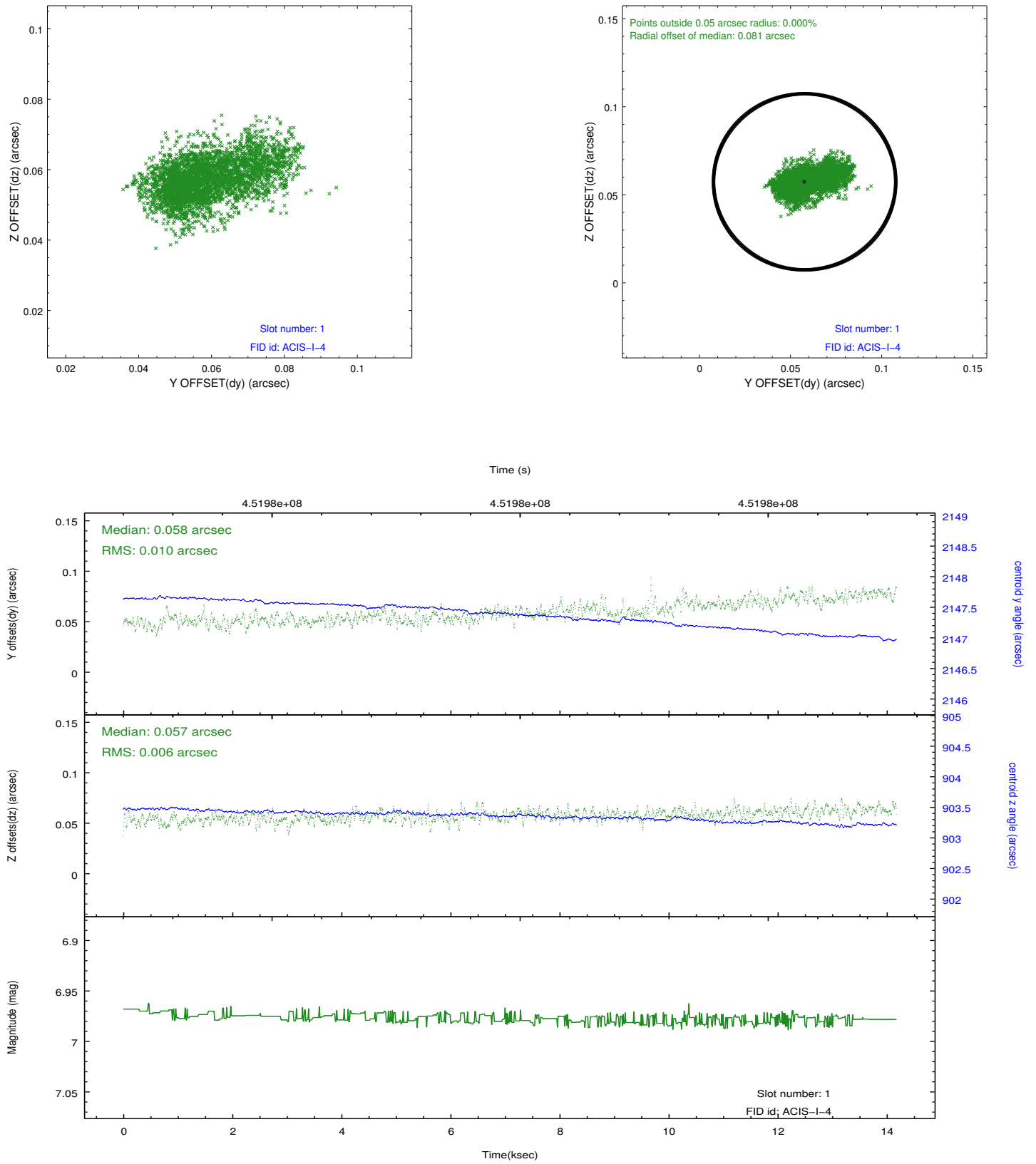


2.5 FID Slots

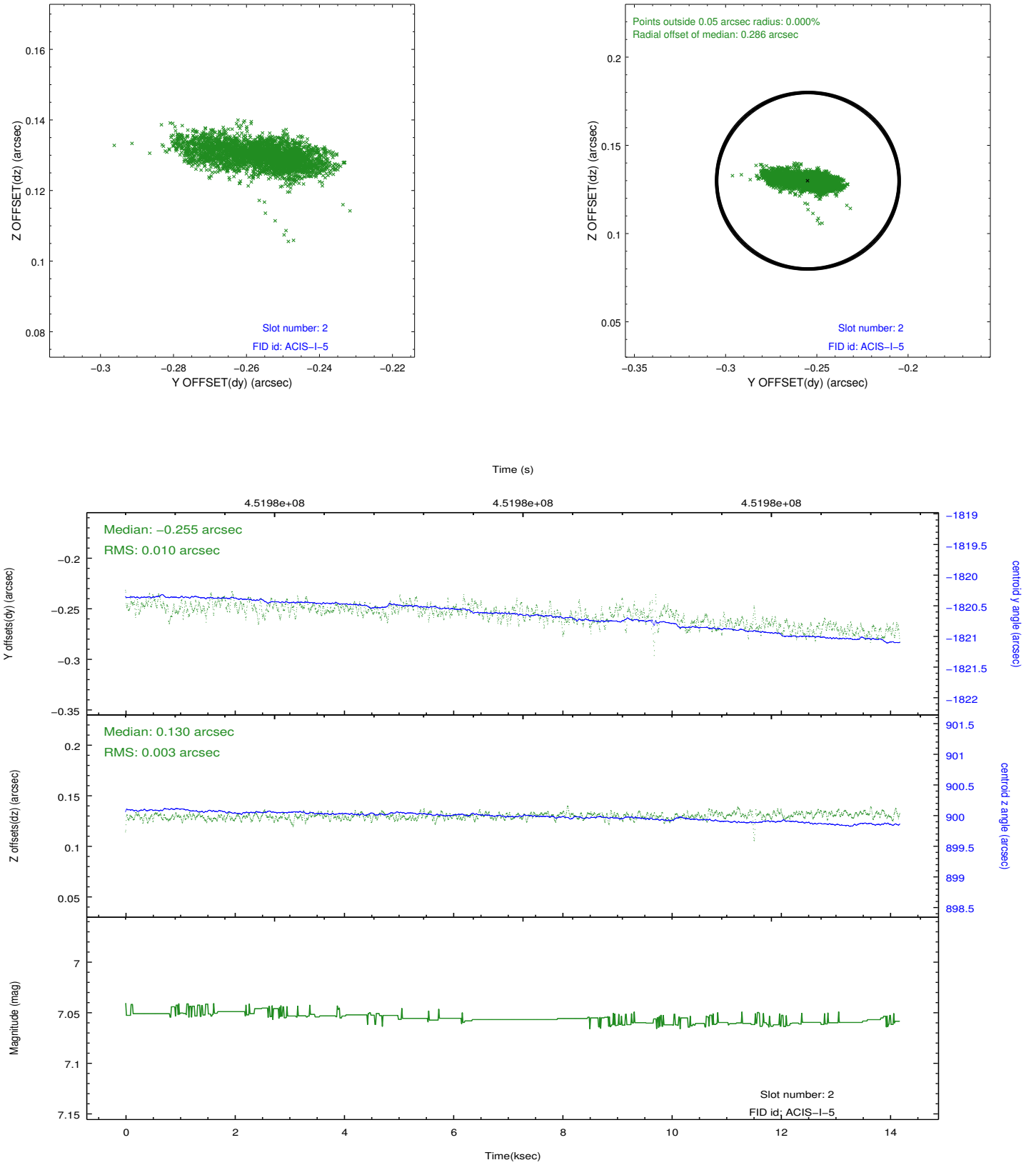
2.5.1 Slot 0



2.5.2 Slot 1



2.5.3 Slot 2



A Summary

A.1 Status

V&V Scientist	Jen Lauer
V&V Date (YYYY-MM-DD)	2012.05.04
V&V Edition	1
V&V Disposition and Status	OK
V&V Charge Time	14.005749996185

A.2 Comments

A spatial region of the original bias map for CCD = 1 suffered from anomalously high data values. Pixels in the event data that were bias-corrected by one of the original affected bias pixels may have an apparent energy shift. While the change in energy is expected to be small (~ 20 eV), it depends on many parameters that have not yet been fully explored for this bias anomaly. The bias map for CCD = 1 has been reconstructed for this processing to remove this anomaly using scaled data from a comparable bias map from another observation. The pixels affected by the anomaly are bounded by sky coords:
(252.16764,34.99770), (252.17565,35.00518), (252.15554,35.01969), (252.14303,35.01545)