

V&V Reference Report

L2 ASCDS Version : 8.4.5

Observation 12274 - L2 Version 2
Chandra X-Ray Center

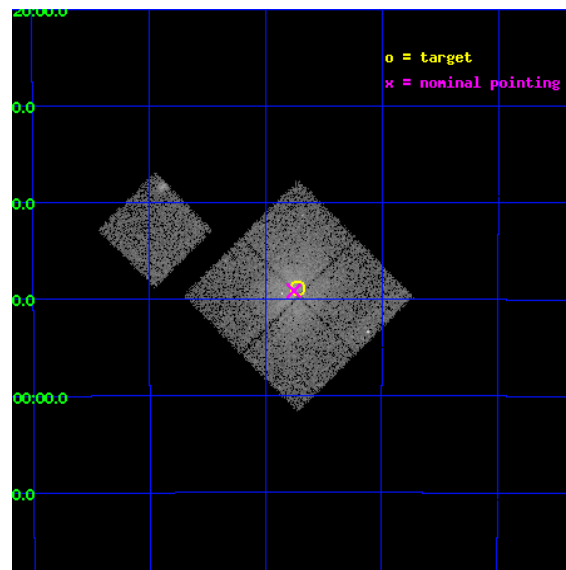
L2 Processing Date : Jul 1 2012

Contents

1	Front	2
2	OBI	3
2.1	OBI	3
2.1.1	Images	3
2.1.2	Bias	3
2.1.3	Parameters	4
2.1.4	Events	4
2.2	Compared Parameters	5
2.3	Aspect	6
2.4	Star Slots	9
2.4.1	Slot 3	9
2.4.2	Slot 4	10
2.4.3	Slot 5	11
2.4.4	Slot 6	12
2.4.5	Slot 7	13
2.5	FID Slots	14
2.5.1	Slot 0	14
2.5.2	Slot 1	15
2.5.3	Slot 2	16
A	Summary	17
A.1	Status	17
A.2	Comments	17

1 Front

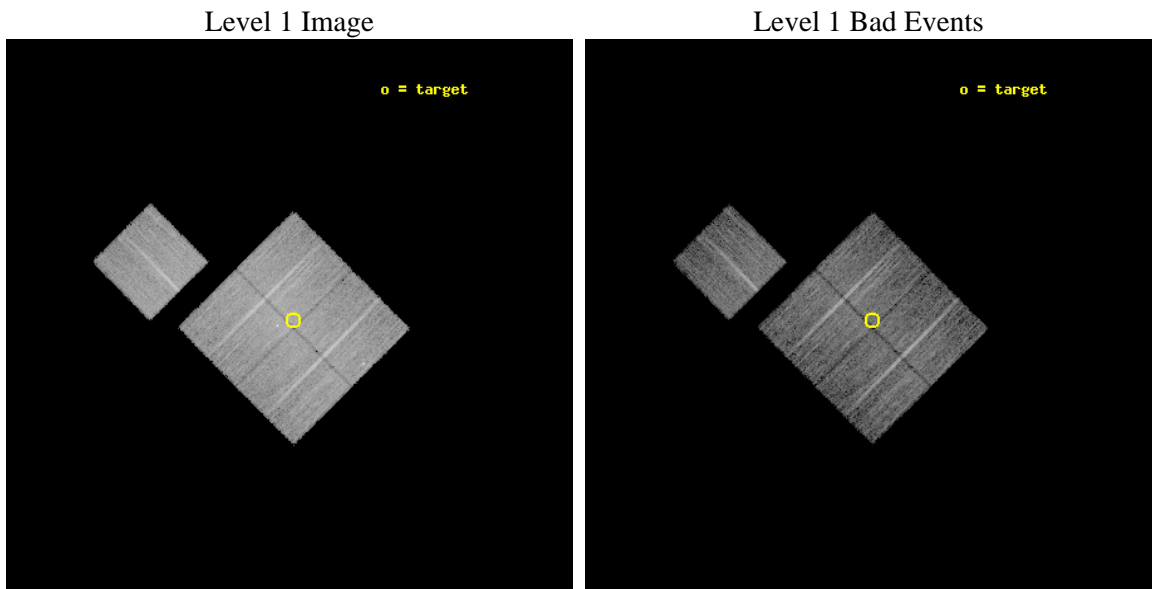
seq_num	800993	Sequence number
obs_id	12274	Observation id
title	A 'CENTENNIAL' SAMPLE OF THE 100 X-RAY BRIGHTEST GALAXY CLUSTERS	
observer	Dr. Alexey Vikhlinin	Principal investigator
object	A3695	Source name
dtcycle	0	
cycle	P	events from which exps? Prim/Second/Both
ra_targ	308.680417	Observer's specified target RA [deg]
dec_targ	-35.815528	Observer's specified target Dec [deg]
ra_nom	308.68926072752	Nominal RA [deg]
dec_nom	-35.819257068898	Nominal Dec [deg]
roll_nom	315.21386325181	Nominal Roll [deg]
revision	2	Processing version of data
ontime	9994.3590566516	Sum of GTIs [s]
livetime	9863.7753978363	Livetime [s]
ontime0	9997.50007689	Sum of GTIs [s]
ontime1	9984.9360256791	Sum of GTIs [s]
ontime2	9997.50007689	Sum of GTIs [s]
ontime3	9994.3590566516	Sum of GTIs [s]
ontime6	9994.3590764999	Sum of GTIs [s]
l2events	51627	Number of level 2 events



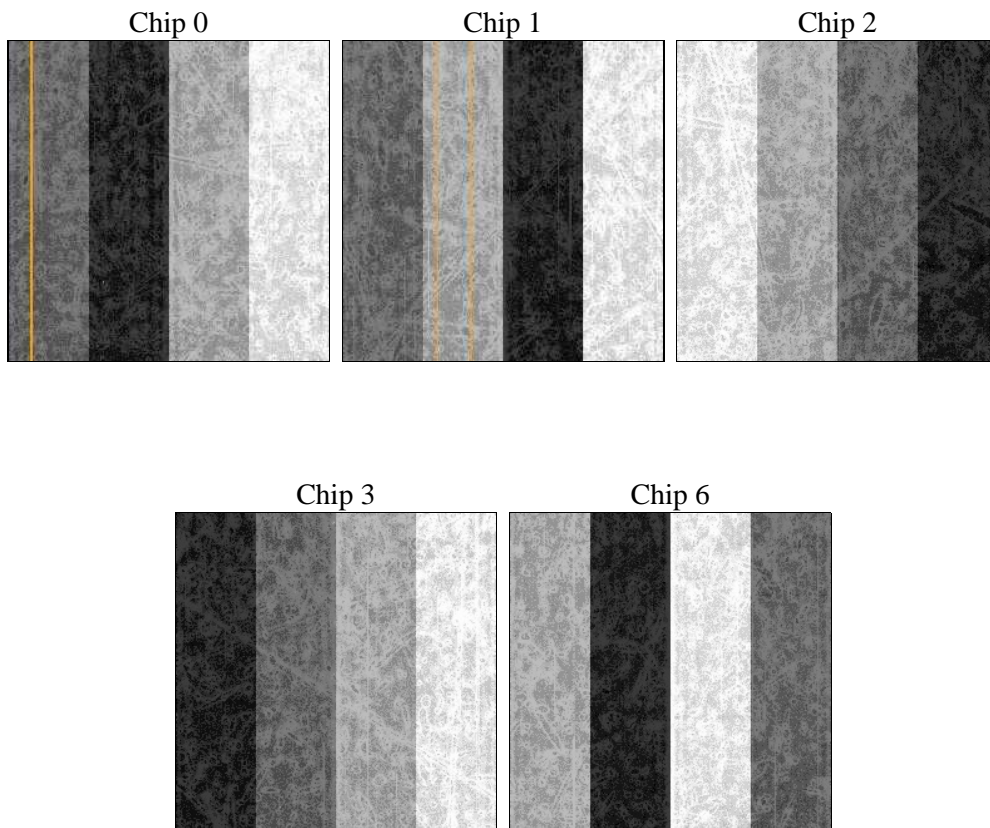
2 OBI

2.1 OBI

2.1.1 Images



2.1.2 Bias



2.1.3 Parameters

obi_num	0	Obi number	sched_exp_time	9947.884000	[s] Scheduled observation exposure time
ascdsver	8.4.5	Processing system revision	ontime	9994.3590566516	Sum of GTIs [s]
caldsver	4.5.0	 	ontime0	9997.50007689	Sum of GTIs [s]
date	2012-07-01T16:42:07	Date and time of file creation	ontime1	9984.9360256791	Sum of GTIs [s]
revision	2	Processing version of data	ontime2	9997.50007689	Sum of GTIs [s]
			ontime3	9994.3590566516	Sum of GTIs [s]
			ontime6	9994.3590764999	Sum of GTIs [s]
			l1events	383860	Number of level 1 events

2.1.4 Events

	ccd 0	ccd 1	ccd 2	ccd 3	ccd 6
level 1 events	72793	75490	80475	79905	75197
rejected events	60864	63223	66994	66920	66511
rejected %	83%	83%	83%	83%	88%

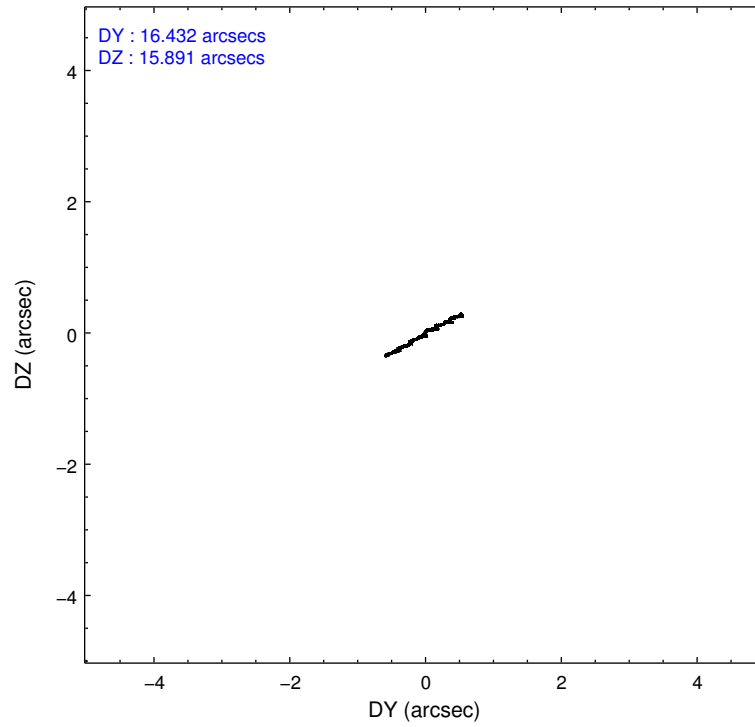
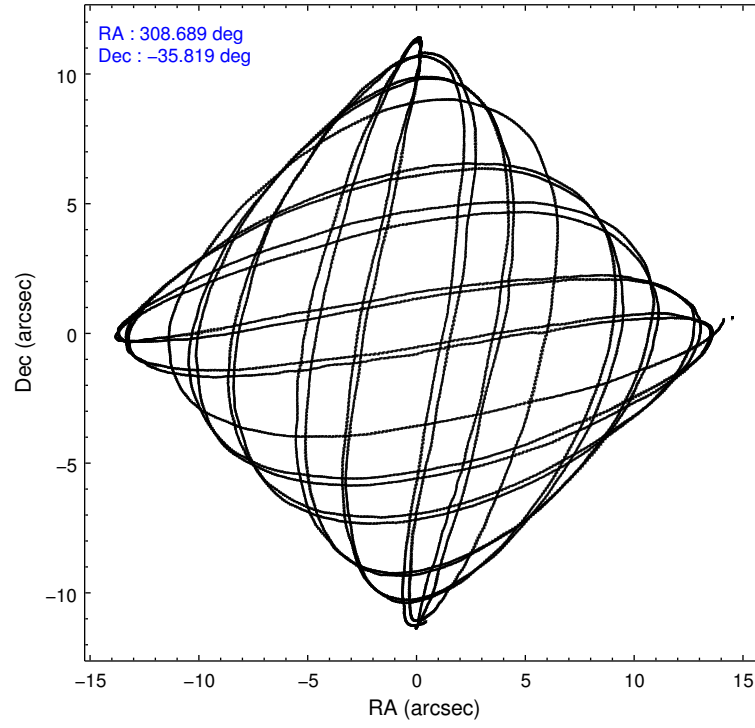
	ccd 0	ccd 1	ccd 2	ccd 3	ccd 6
grade 0 events	5733	5775	7285	7022	3261
	7%	7%	9%	8%	4%
grade 1 events	52	52	98	56	40
	0%	0%	0%	0%	0%
grade 2 events	2431	2447	2546	2263	1917
	3%	3%	3%	2%	2%
grade 3 events	1009	987	999	977	890
	1%	1%	1%	1%	1%
grade 4 events	980	1048	991	1006	858
	1%	1%	1%	1%	1%
grade 5 events	3004	3278	2913	3517	3284
	4%	4%	3%	4%	4%
grade 6 events	1786	2018	1669	1724	1764
	2%	2%	2%	2%	2%
grade 7 events	57798	59885	63974	63340	63183
	79%	79%	79%	79%	84%

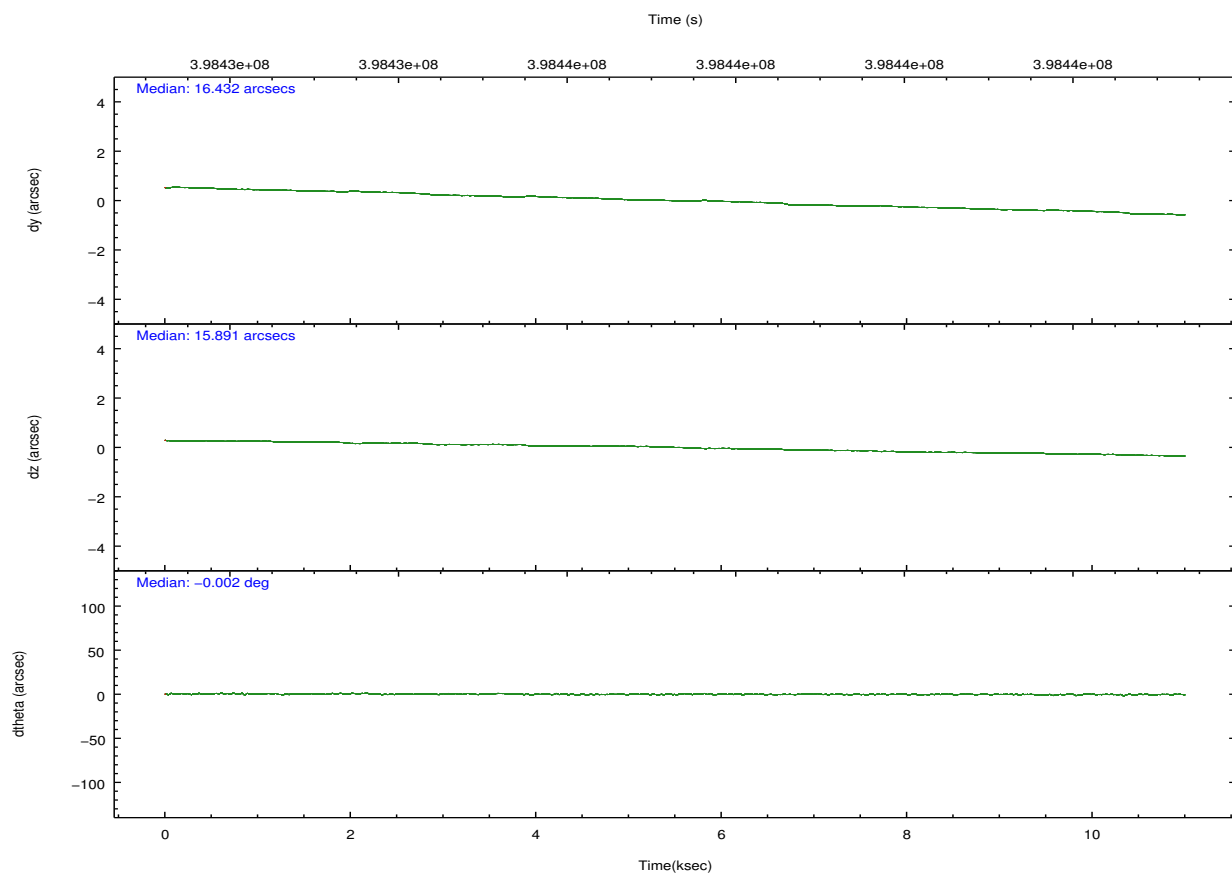
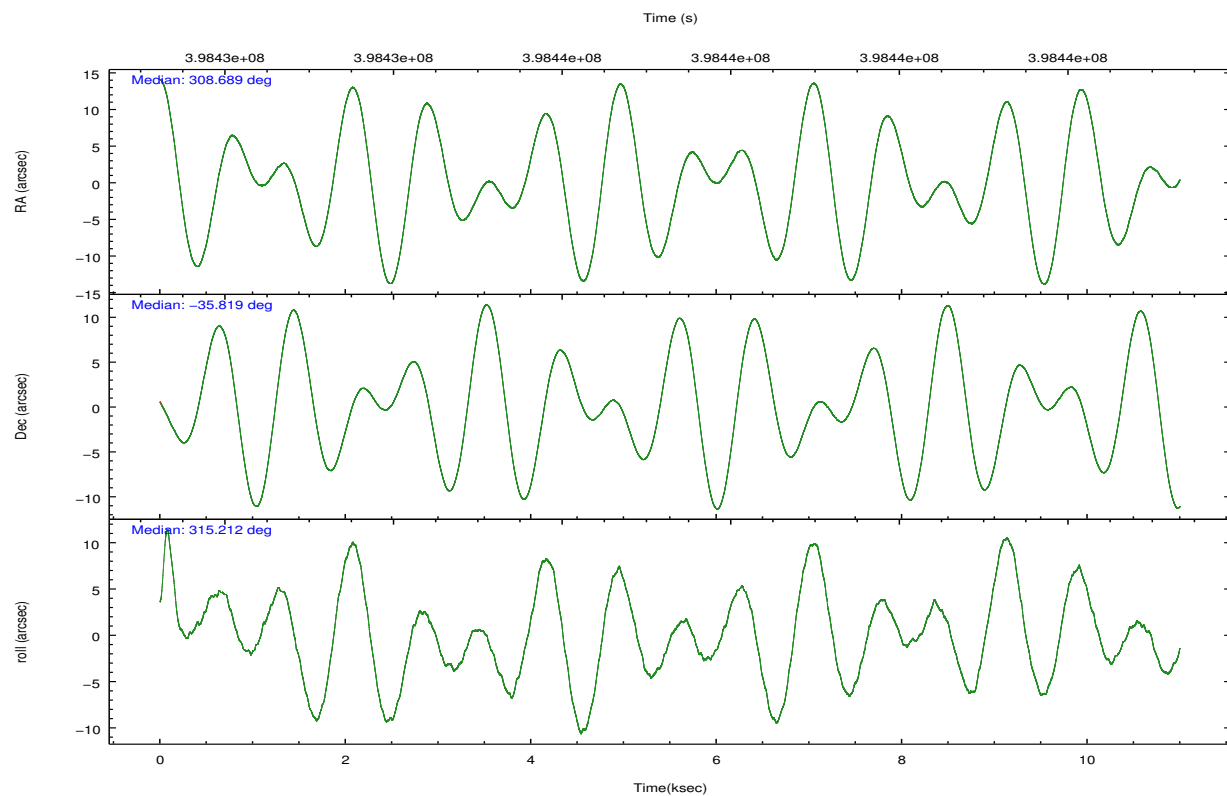
2.2 Compared Parameters

Parameter	Planned	Actual
Instrument	ACIS	ACIS
Detector	ACIS-01236	ACIS-01236
Grating	NONE	NONE
Data mode	VFAINT	VFAINT
Observation mode	POINTING	POINTING
[deg] Pointing RA	308.656438	308.6892607275155
[deg] Pointing Dec	-35.812345	-35.81925706889795
[deg] Pointing Roll	314.985972	315.213863251814
[mm] SIM focus pos	-0.782348	-0.7809083437167272
[mm] SIM defocus	0	0.001439871863259334
[mm] SIM translation stage pos	-233.592463	-233.5874344608287
[mm] SIM translation stage offset	0	-0.005018542100998502
[s] Observation start time (MET)	398432829.184000	398431470.2033
Observation start date	2010-08-17T11:46:03	2010-08-17T11:24:30
[s] Observation end time (MET)	398442777.184000	398443014.26639
Observation end date	2010-08-17T14:31:51	2010-08-17T14:36:54
Read mode	TIMED	TIMED

Parameter	Planned	Actual
Obspar format version number	7	7
Obspar file type	PREDICTED	ACTUAL
Obspar update status	NONE	UPDATED
CCD I0 on	Y	Y
CCD I1 on	Y	Y
CCD I2 on	Y	Y
CCD I3 on	Y	Y
CCD S0 on	N	N
CCD S1 on	N	N
CCD S2 on	O1	Y
CCD S3 on	N	N
CCD S4 on	N	N
CCD S5 on	N	N
Number of optional ACIS chips dropped	0	0
On-chip summing requested	N	N
Subarray requested	NONE	NONE
Alternating exposures requested	N	N
[s] Primary exposure time	0.000000	3.1

2.3 Aspect



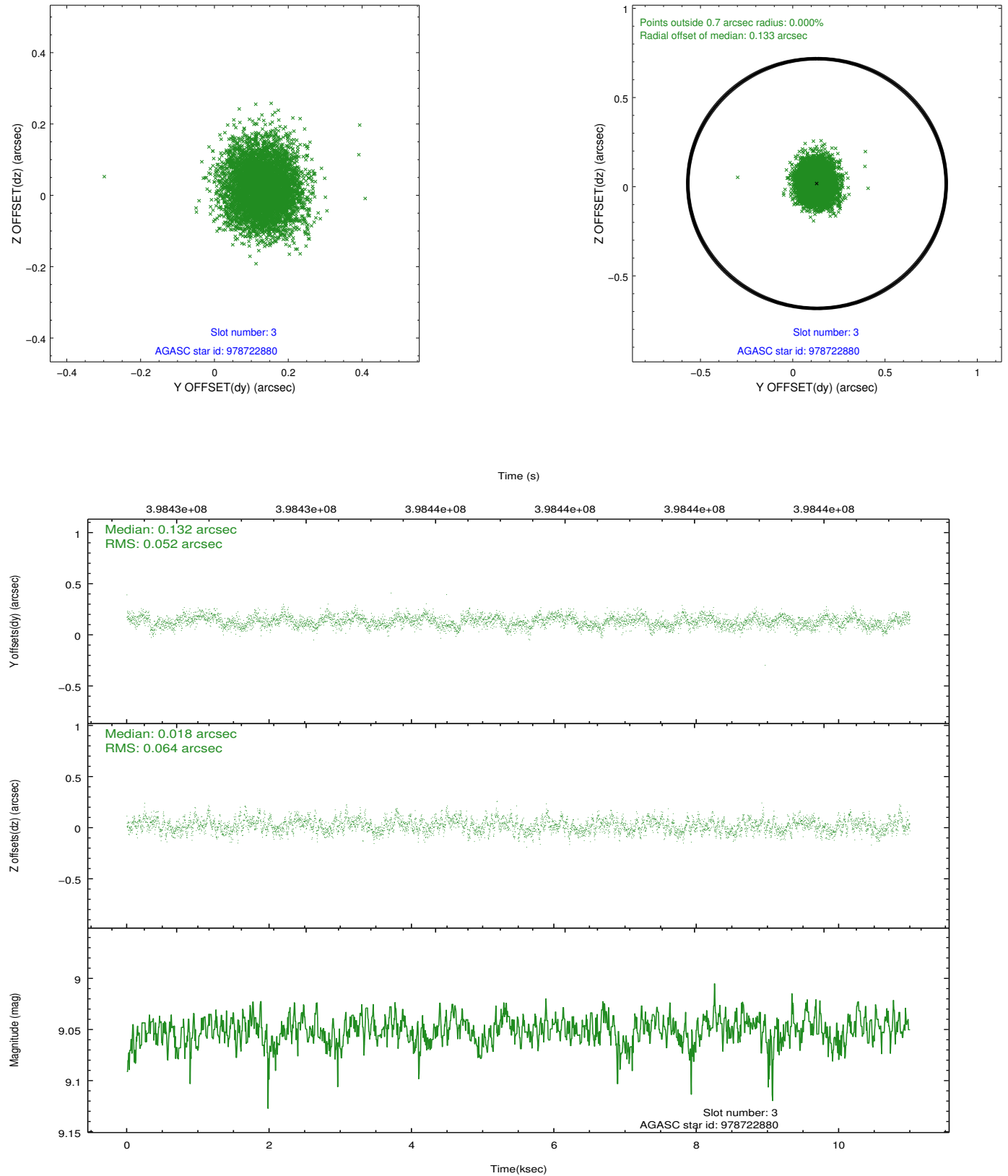


Slot Statistics

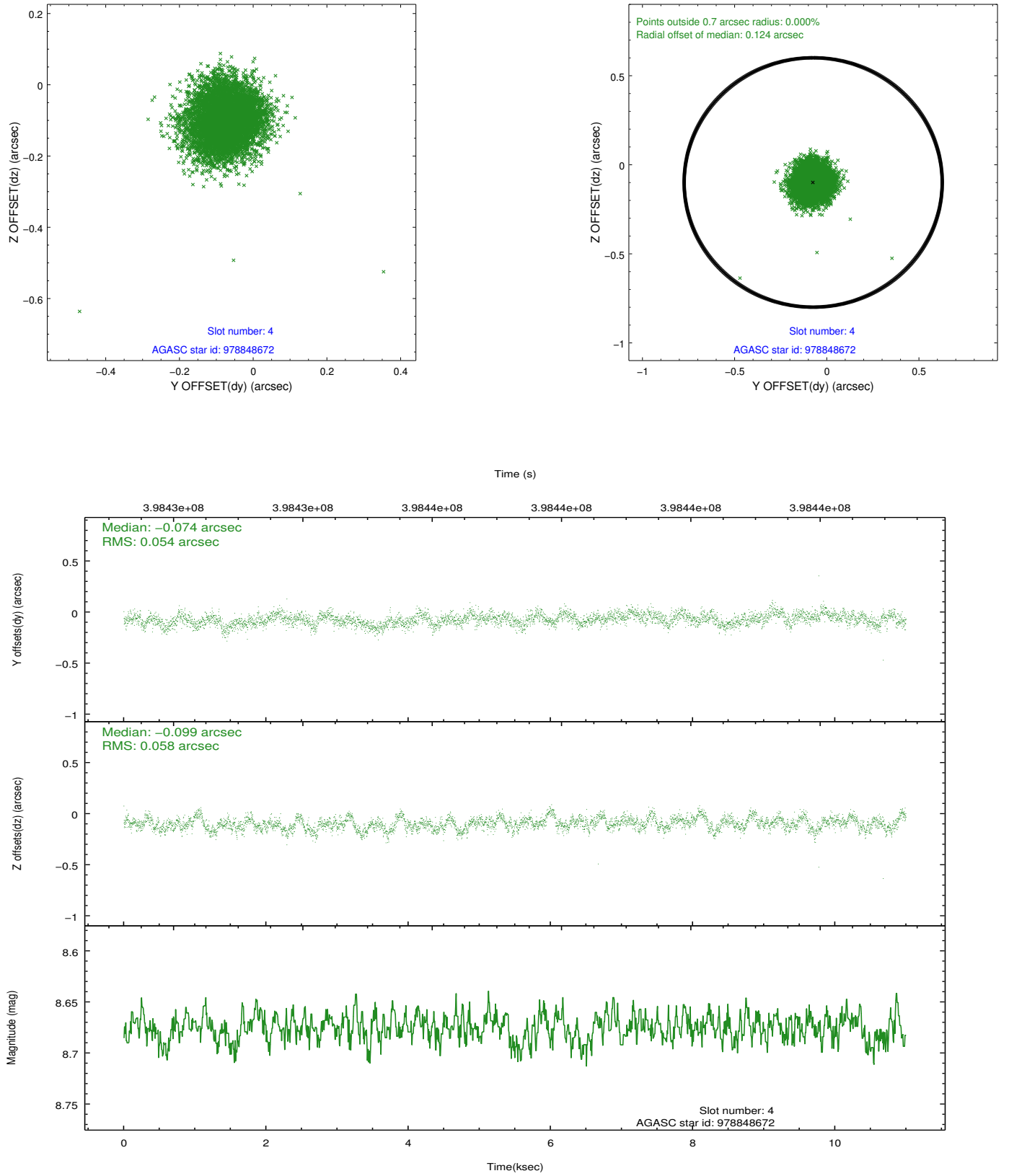
slot	status	id	mag	n_pts	med_dy	med_dz	dr1	dr2	ra	dec	mean_y	mean_z
0	FID	ACIS-I-1	7.02	2683	0.048	-0.034	0.009	0.016	0.000000	0.000000	923.04	-839.53
1	FID	ACIS-I-5	7.01	2683	-0.223	0.045	0.009	0.014	0.000000	0.000000	-1825.08	1057.80
2	FID	ACIS-I-6	7.02	2683	0.084	0.060	0.009	0.015	0.000000	0.000000	388.11	1702.85
3	GUIDE	978722880	9.05	5361	0.132	0.018	0.088	0.142	308.120435	-36.176318	-170.56	-2031.28
4	GUIDE	978848672	8.68	5364	-0.074	-0.099	0.083	0.132	309.449249	-36.066332	2284.65	978.49
5	GUIDE	978854784	7.72	5364	-0.089	-0.206	0.061	0.099	308.287800	-35.874710	-599.12	-920.62
6	GUIDE	978856416	8.97	5346	-0.002	0.077	0.121	0.214	308.757862	-36.434391	1792.06	-1375.38
7	GUIDE	978721024	9.80	5354	0.044	0.217	0.182	0.309	307.728032	-35.870639	-1756.25	-2073.00

2.4 Star Slots

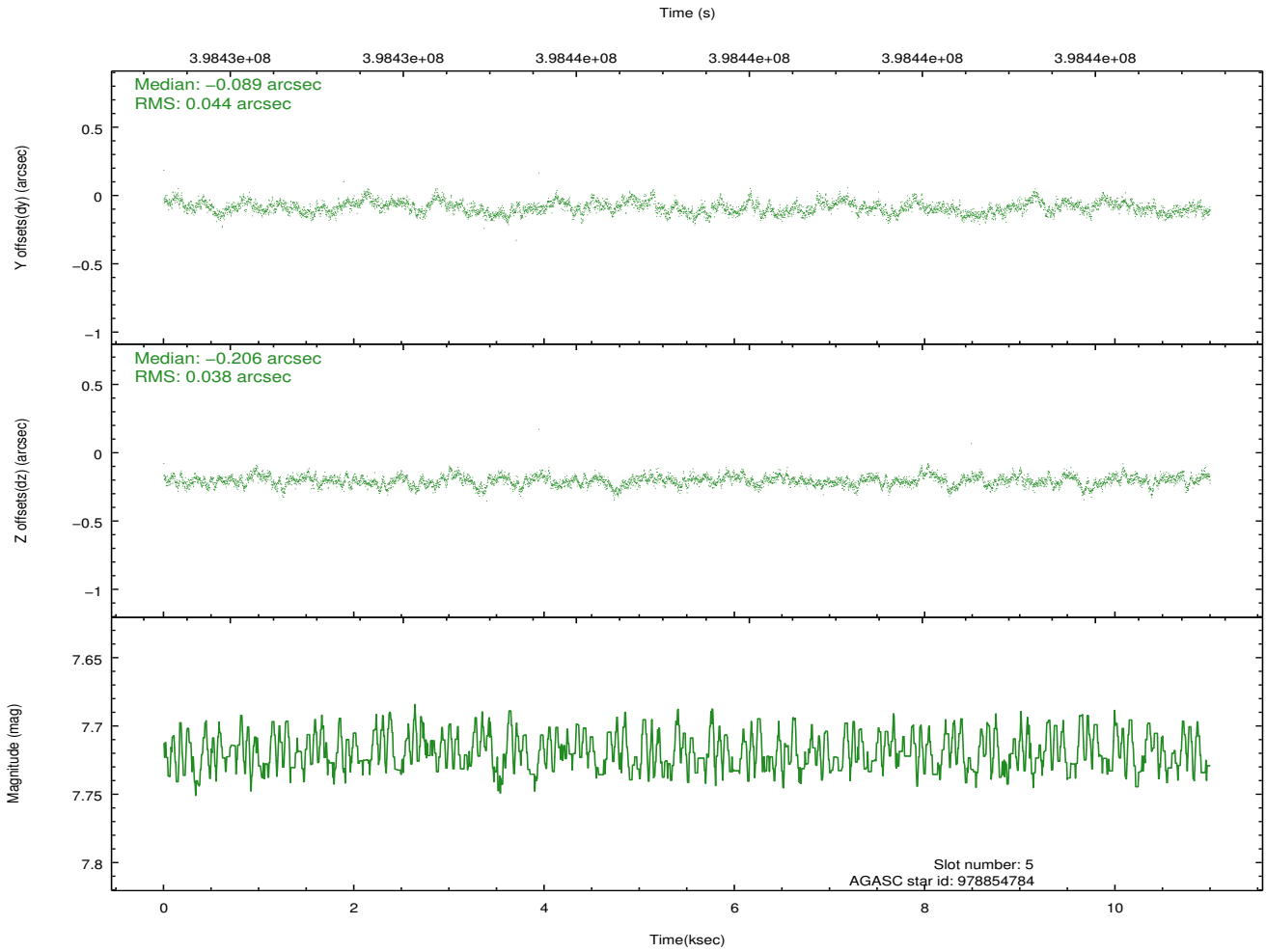
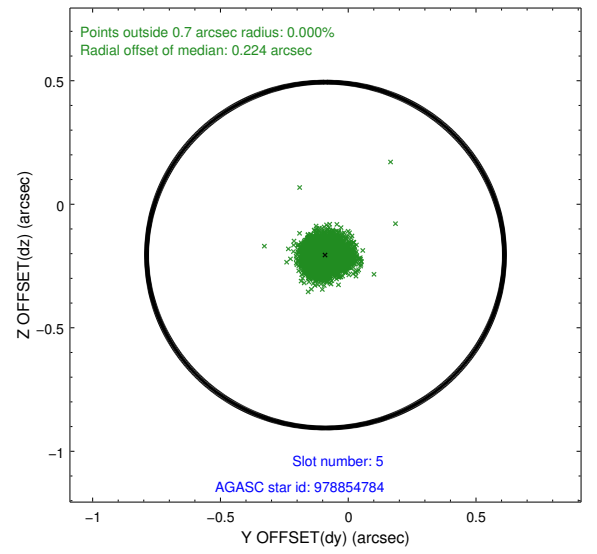
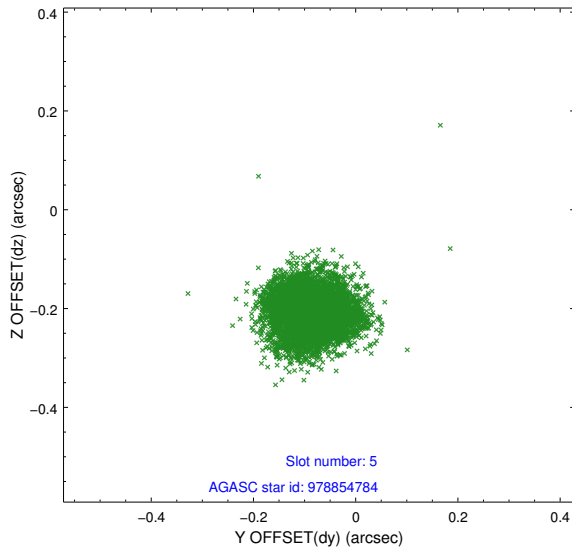
2.4.1 Slot 3



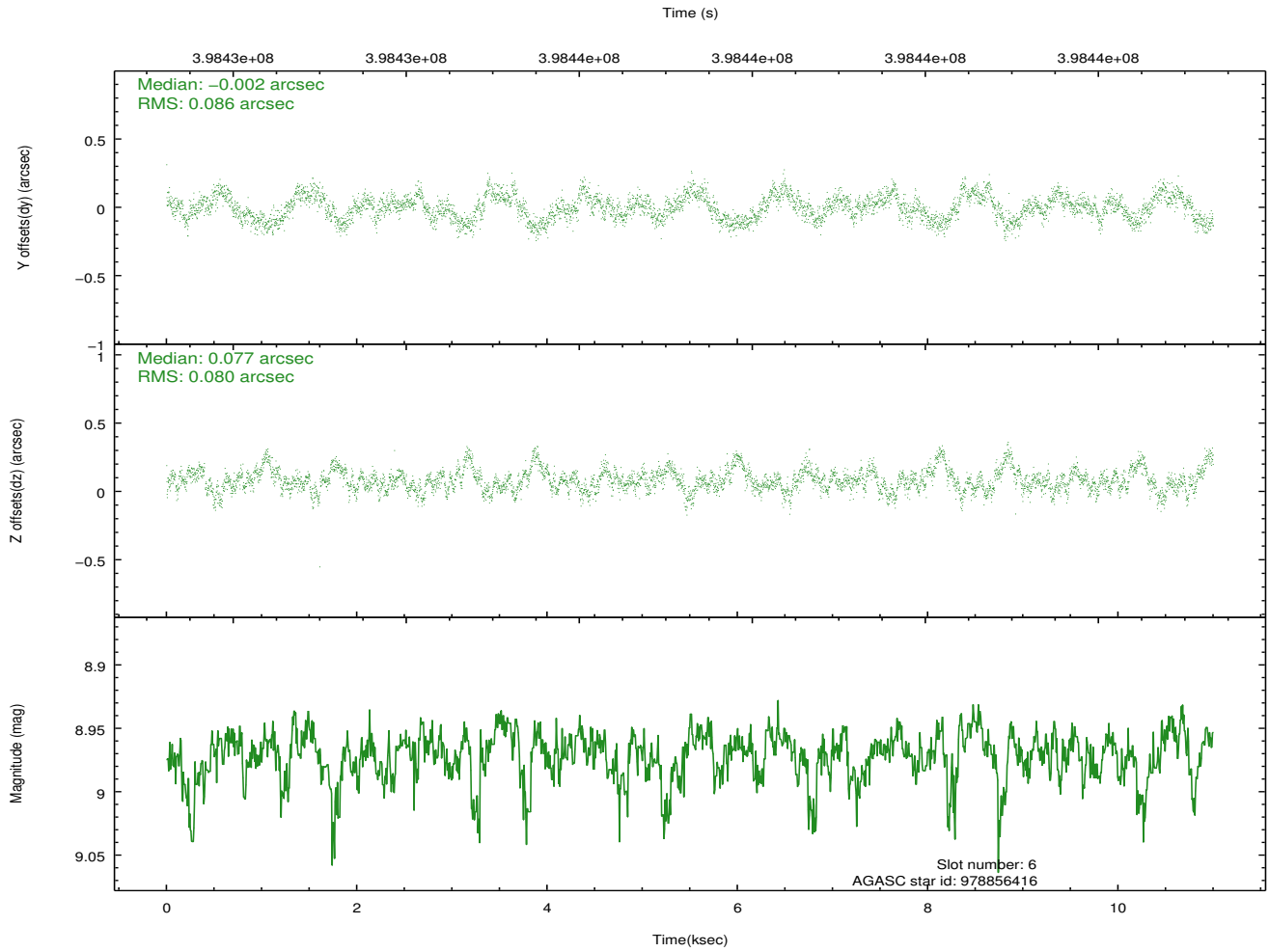
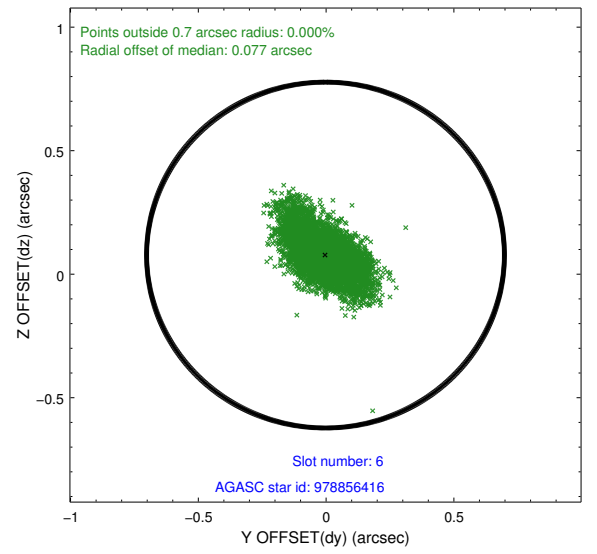
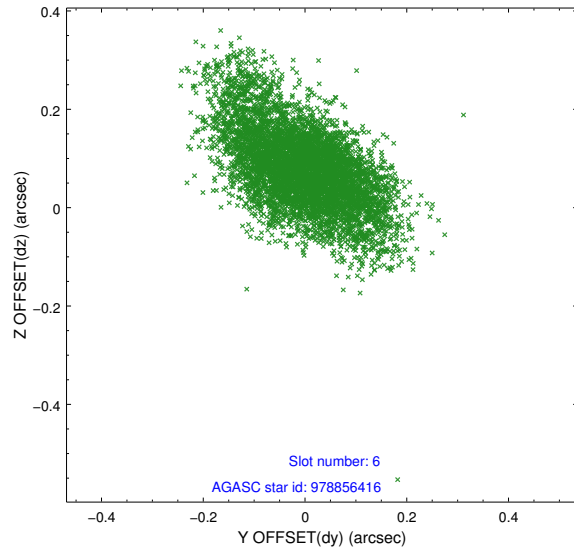
2.4.2 Slot 4



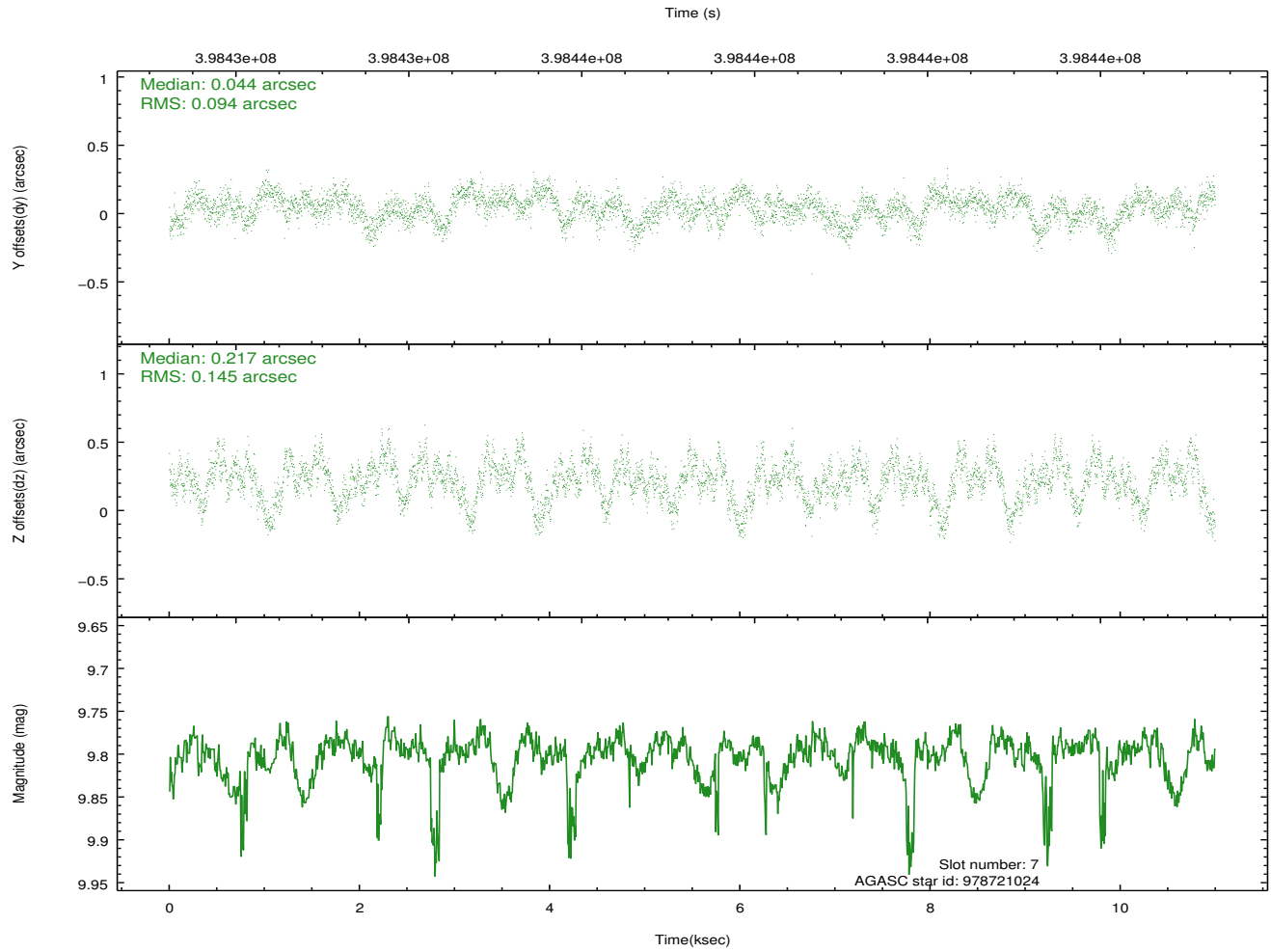
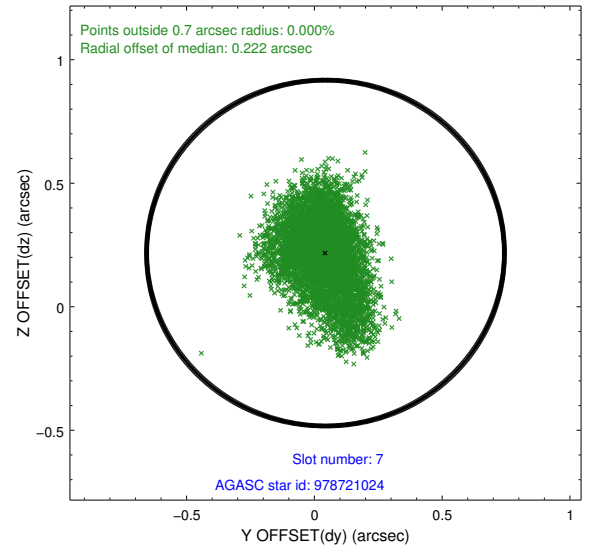
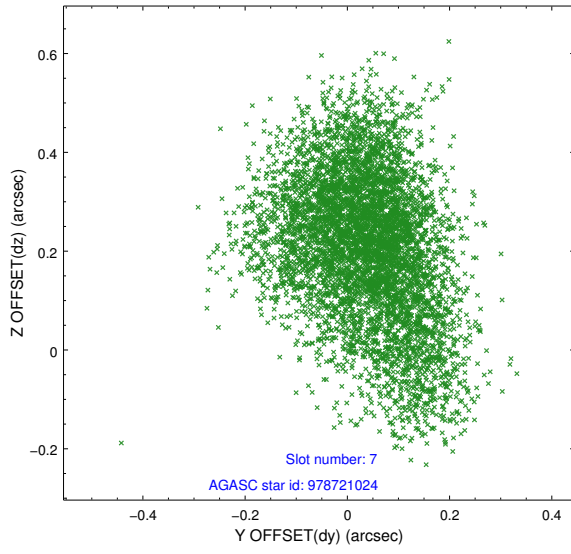
2.4.3 Slot 5



2.4.4 Slot 6

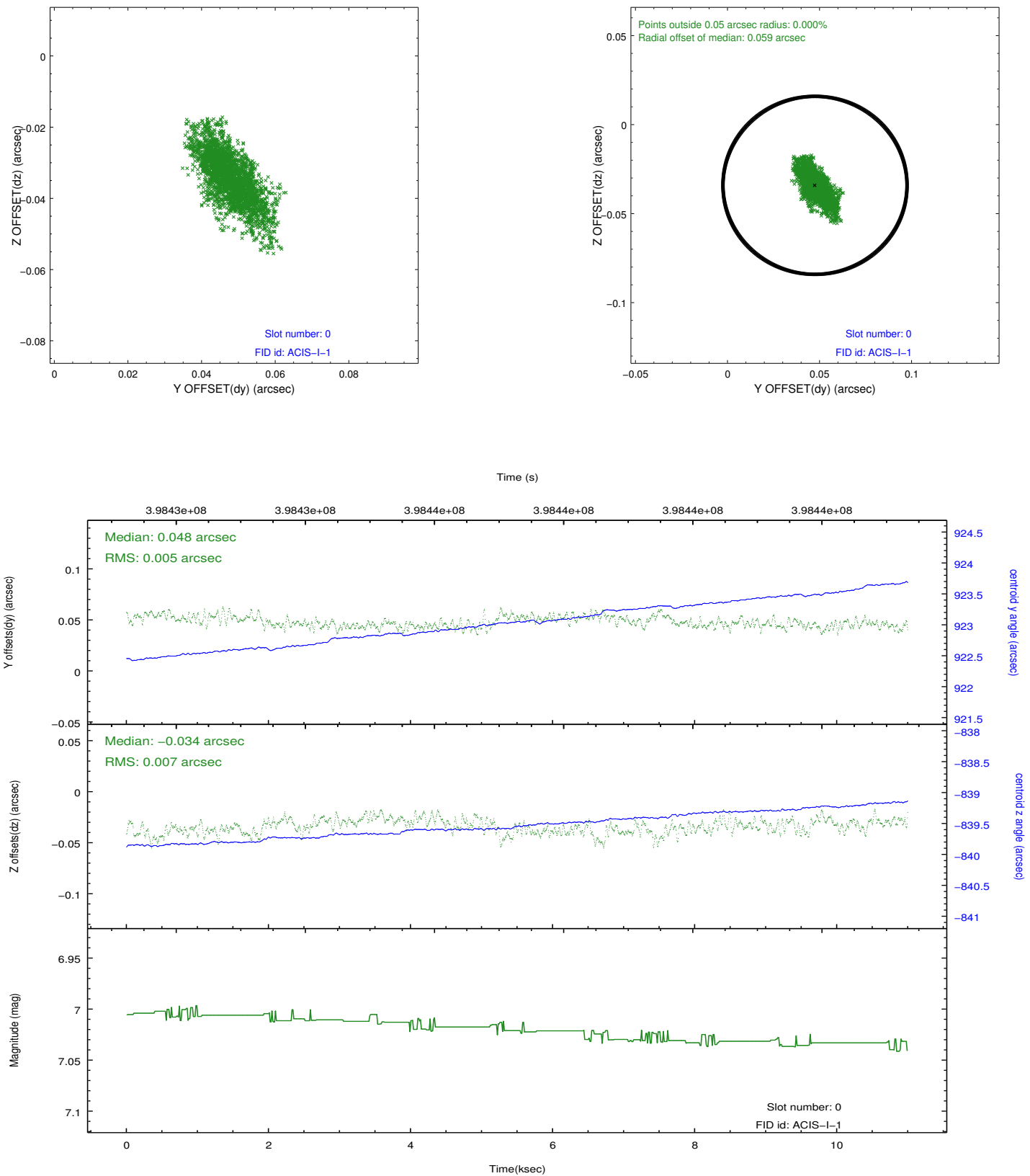


2.4.5 Slot 7

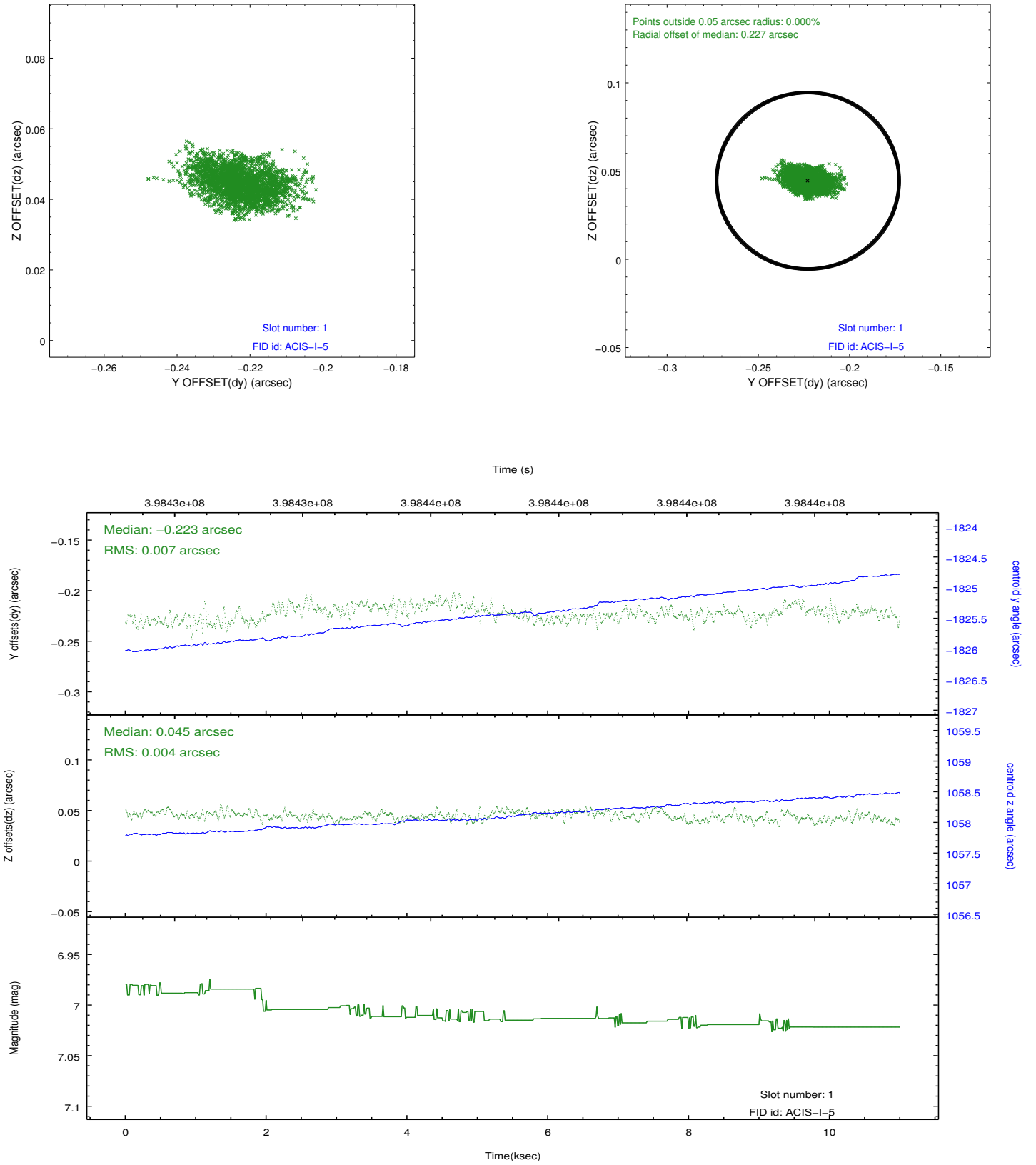


2.5 FID Slots

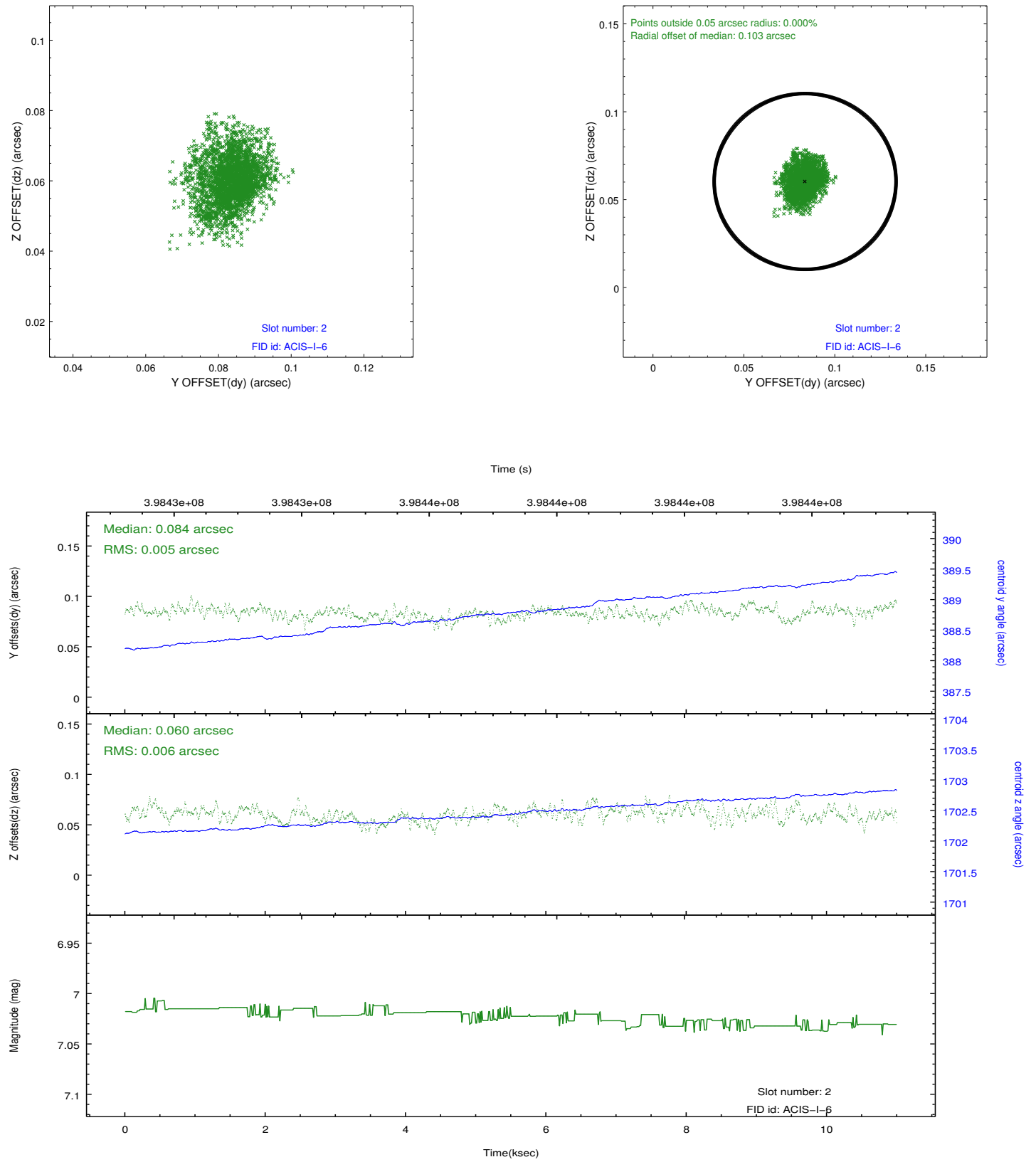
2.5.1 Slot 0



2.5.2 Slot 1



2.5.3 Slot 2



A Summary

A.1 Status

V&V Scientist	Beth Sundheim
V&V Date (YYYY-MM-DD)	2012.07.10
V&V Edition	1
V&V Disposition and Status	OK
V&V Charge Time	9.9943590566516

A.2 Comments