

V&V Reference Report

L2 ASCDS Version : 8.4.3

Observation 12273 - L2 Version 2
Chandra X-Ray Center

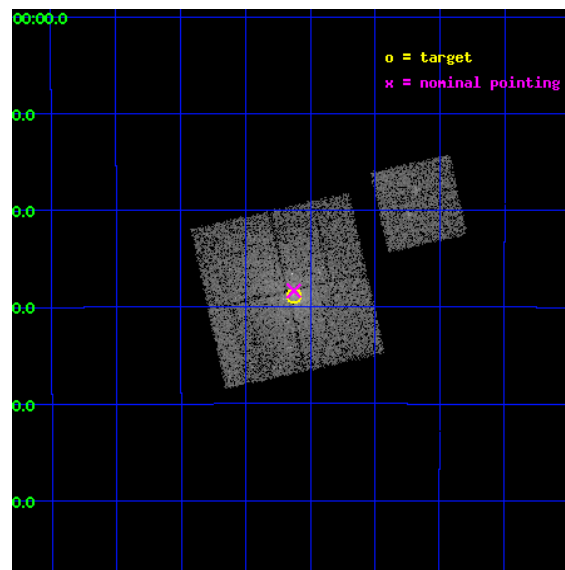
L2 Processing Date : Feb 24 2012

Contents

1	Front	2
2	OBI	3
2.1	OBI	3
2.1.1	Images	3
2.1.2	Bias	3
2.1.3	Parameters	4
2.1.4	Events	4
2.2	Compared Parameters	5
2.3	Aspect	6
2.4	Star Slots	9
2.4.1	Slot 3	9
2.4.2	Slot 4	10
2.4.3	Slot 5	11
2.4.4	Slot 6	12
2.4.5	Slot 7	13
2.5	FID Slots	14
2.5.1	Slot 0	14
2.5.2	Slot 1	15
2.5.3	Slot 2	16
A	Summary	17
A.1	Status	17
A.2	Comments	17

1 Front

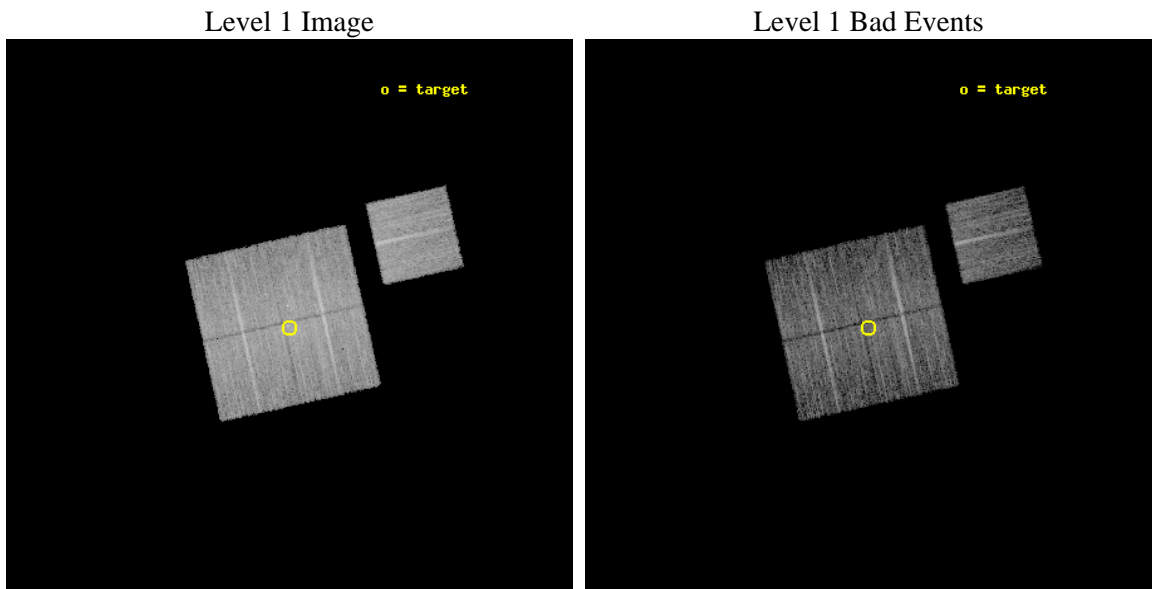
seq_num	800992	Sequence number
obs_id	12273	Observation id
title	A 'CENTENNIAL' SAMPLE OF THE 100 X-RAY BRIGHTEST GALAXY CLUSTERS	
observer	Dr. Alexey Vikhlinin	Principal investigator
object	A548e	Source name
dtcycle	0	
cycle	P	events from which exps? Prim/Second/Both
ra_targ	87.1575	Observer's specified target RA [deg]
dec_targ	-25.480361	Observer's specified target Dec [deg]
ra_nom	87.156767400711	Nominal RA [deg]
dec_nom	-25.472275928524	Nominal Dec [deg]
roll_nom	77.333346729733	Nominal Roll [deg]
revision	2	Processing version of data
ontime	10059.500077367	Sum of GTIs [s]
livetime	9928.0653031598	Livetime [s]
ontime0	10056.320288777	Sum of GTIs [s]
ontime1	10059.500077367	Sum of GTIs [s]
ontime2	10059.500077367	Sum of GTIs [s]
ontime3	10059.500077367	Sum of GTIs [s]
ontime6	10059.420239031	Sum of GTIs [s]
l2events	40601	Number of level 2 events



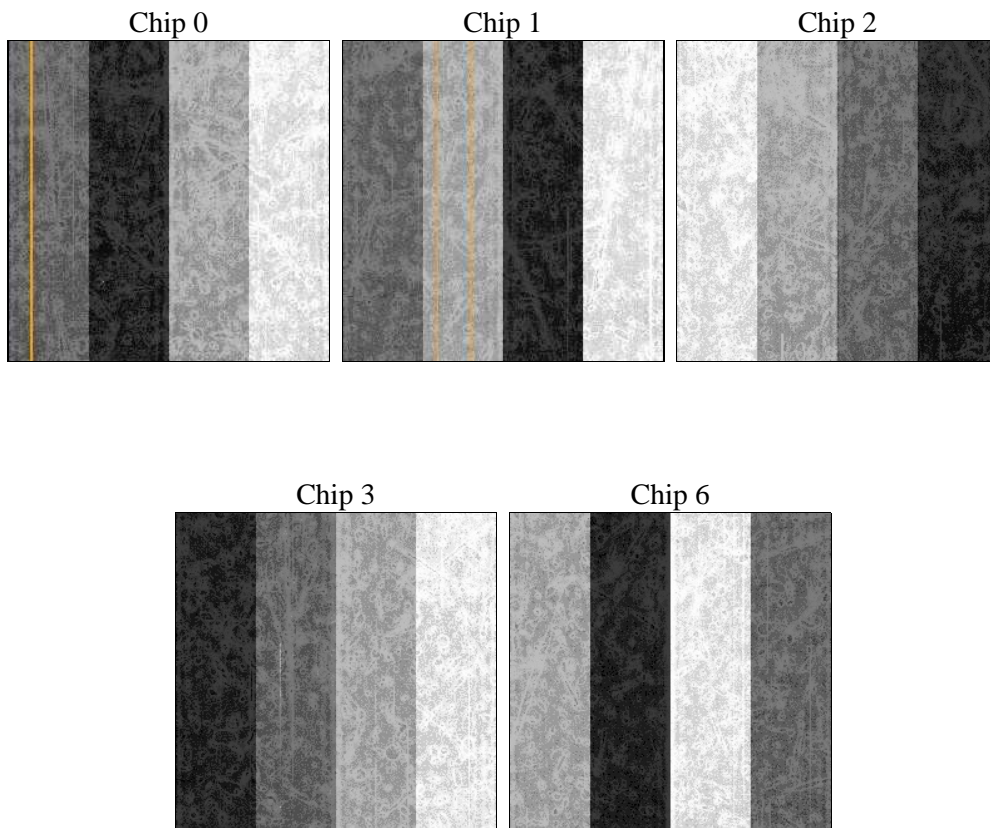
2 OBI

2.1 OBI

2.1.1 Images



2.1.2 Bias



2.1.3 Parameters

obi_num	1	Obi number	sched_exp_time	10000.000000	[s] Scheduled observation exposure time
ascdsver	8.4.3	Processing system revision	ontime	10059.500077367	Sum of GTIs [s]
caldbver	4.4.8	 	ontime0	10056.320288777	Sum of GTIs [s]
date	2012-02-24T04:31:52	Date and time of file creation	ontime1	10059.500077367	Sum of GTIs [s]
revision	2	Processing version of data	ontime2	10059.500077367	Sum of GTIs [s]
			ontime3	10059.500077367	Sum of GTIs [s]
			ontime6	10059.420239031	Sum of GTIs [s]
			l1events	297464	Number of level 1 events

2.1.4 Events

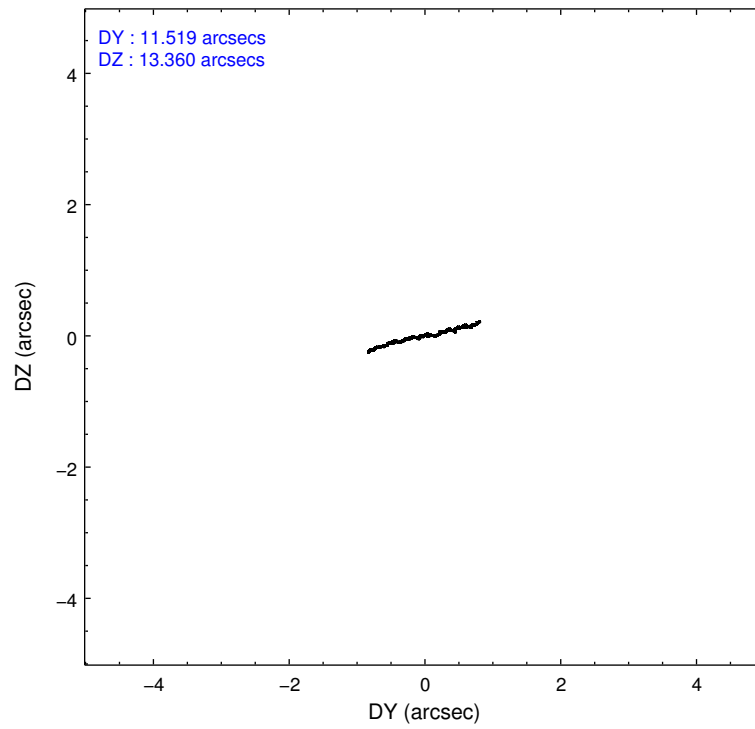
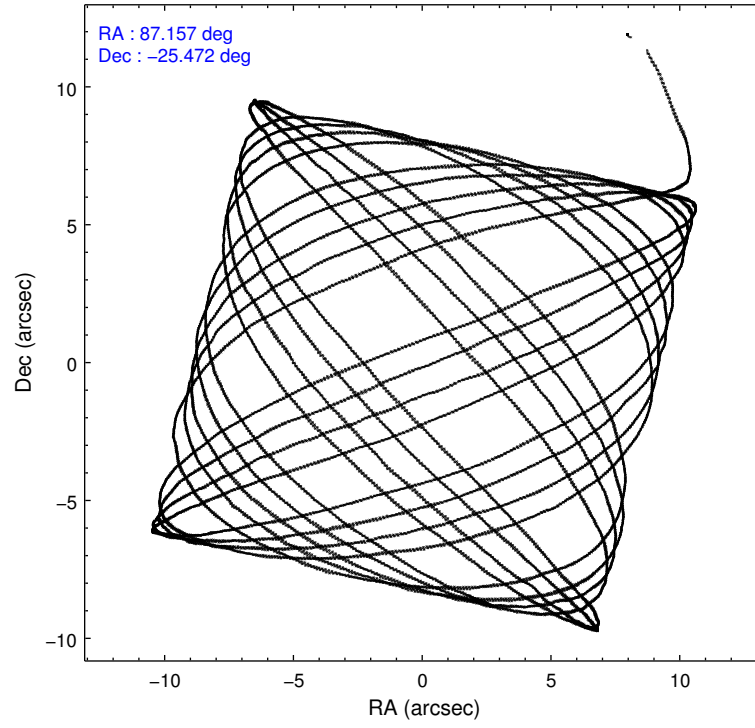
	ccd 0	ccd 1	ccd 2	ccd 3	ccd 6
level 1 events	57514	58205	60155	62520	59070
rejected events	48003	48152	50590	52345	51663
rejected %	83%	82%	84%	83%	87%

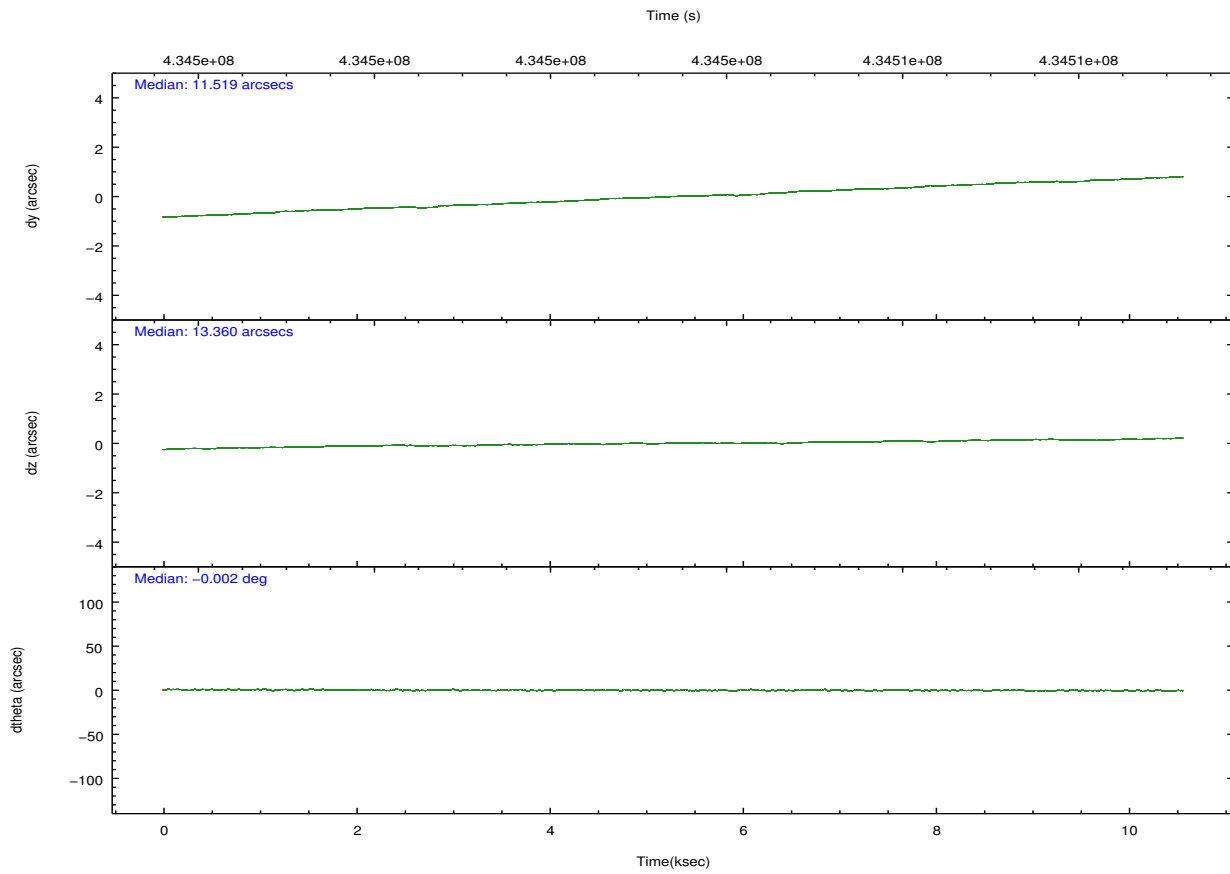
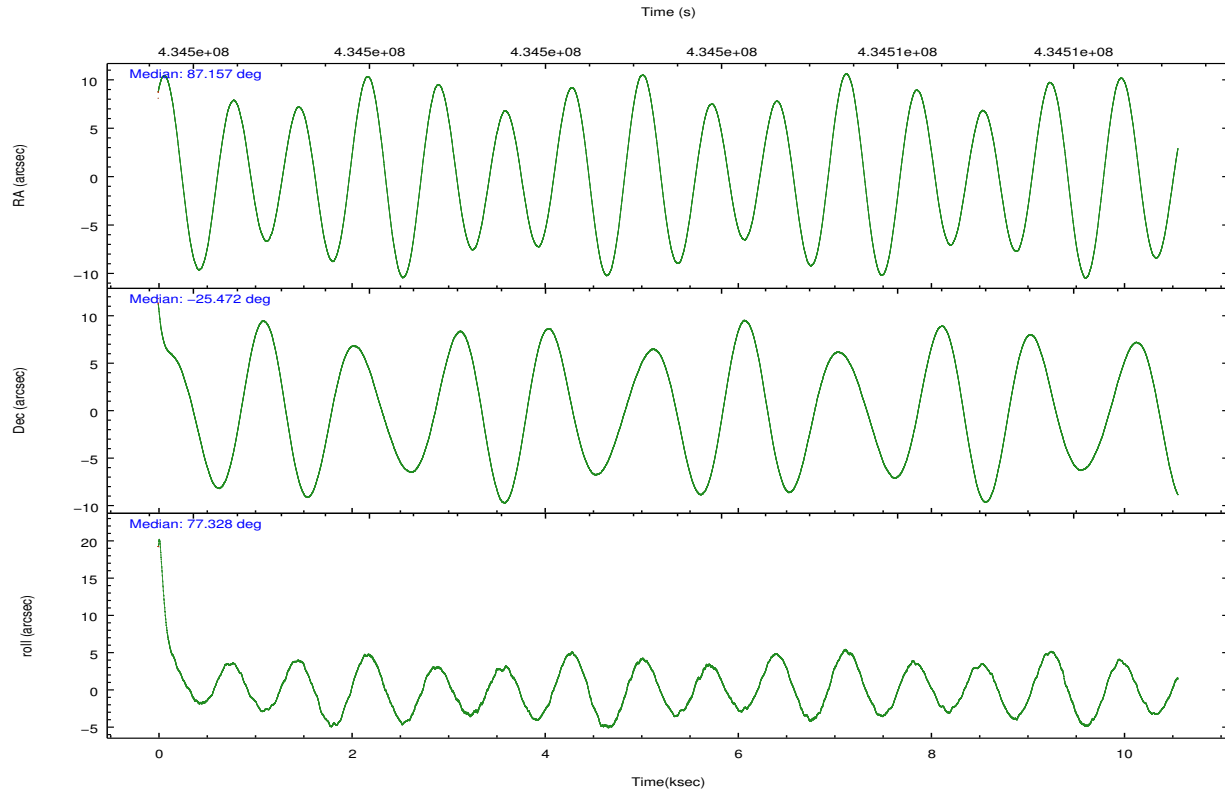
	ccd 0	ccd 1	ccd 2	ccd 3	ccd 6
grade 0 events	4597	4642	4903	5357	2759
	7%	7%	8%	8%	4%
grade 1 events	42	44	59	48	25
	0%	0%	0%	0%	0%
grade 2 events	1937	2083	1808	1831	1600
	3%	3%	3%	2%	2%
grade 3 events	792	874	752	767	747
	1%	1%	1%	1%	1%
grade 4 events	752	858	768	786	736
	1%	1%	1%	1%	1%
grade 5 events	2668	2851	2445	2906	2870
	4%	4%	4%	4%	4%
grade 6 events	1439	1603	1342	1440	1565
	2%	2%	2%	2%	2%
grade 7 events	45287	45250	48078	49385	48768
	78%	77%	79%	78%	82%

2.2 Compared Parameters

Parameter	Planned	Actual	Parameter	Planned	Actual
Instrument	ACIS	ACIS	Obspar format version number	7	7
Detector	ACIS-01236	ACIS-01236	Obspar file type	PREDICTED	ACTUAL
Grating	NONE	NONE	Obspar update status	NONE	UPDATED
Data mode	VFAINT	VFAINT	CCD I0 on	Y	Y
Observation mode	POINTING	POINTING	CCD I1 on	Y	Y
[deg] Pointing RA	87.165978	87.15676740071096	CCD I2 on	Y	Y
[deg] Pointing Dec	-25.498518	-25.47227592852443	CCD I3 on	Y	Y
[deg] Pointing Roll	77.128611	77.33334672973302	CCD S0 on	N	N
[mm] SIM focus pos	-0.782348	-0.7809083437167272	CCD S1 on	N	N
[mm] SIM defocus	0	0.001439871863259334	CCD S2 on	O1	Y
[mm] SIM translation stage pos	-233.592463	-233.5874344608287	CCD S3 on	N	N
[mm] SIM translation stage offset	0	-0.005018542100998502	CCD S4 on	N	N
[s] Observation start time (MET)	434498666.184000	434497549.6383	CCD S5 on	N	N
Observation start date	2011-10-08T22:03:20	2011-10-08T21:45:49	Number of optional ACIS chips dropped	0	0
[s] Observation end time (MET)	434508666.184000	434509684.10144	On-chip summing requested	N	N
Observation end date	2011-10-09T00:50:00	2011-10-09T01:08:04	Subarray requested	NONE	NONE
Read mode	TIMED	TIMED	Alternating exposures requested	N	N
			[s] Primary exposure time	0.000000	3.1

2.3 Aspect



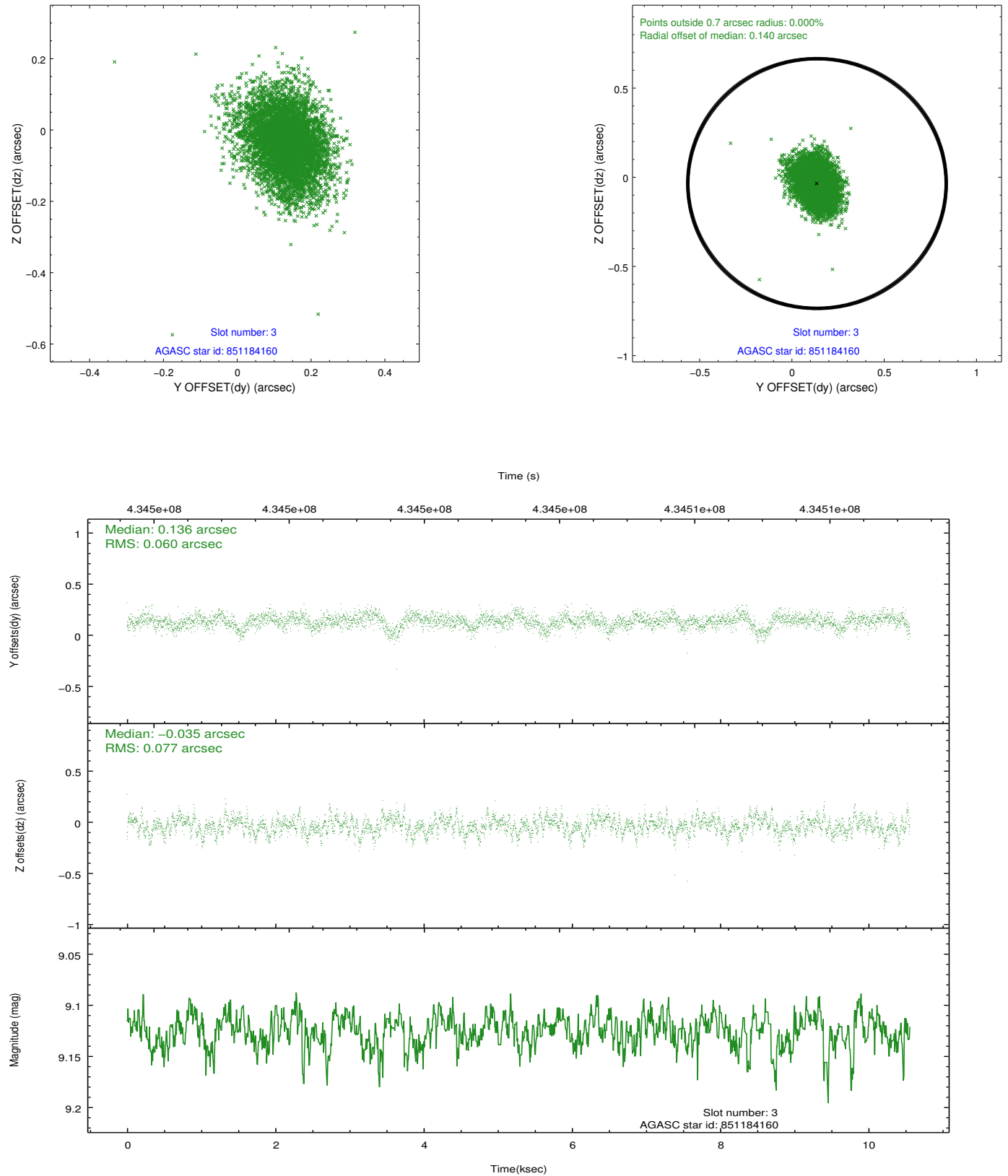


Slot Statistics

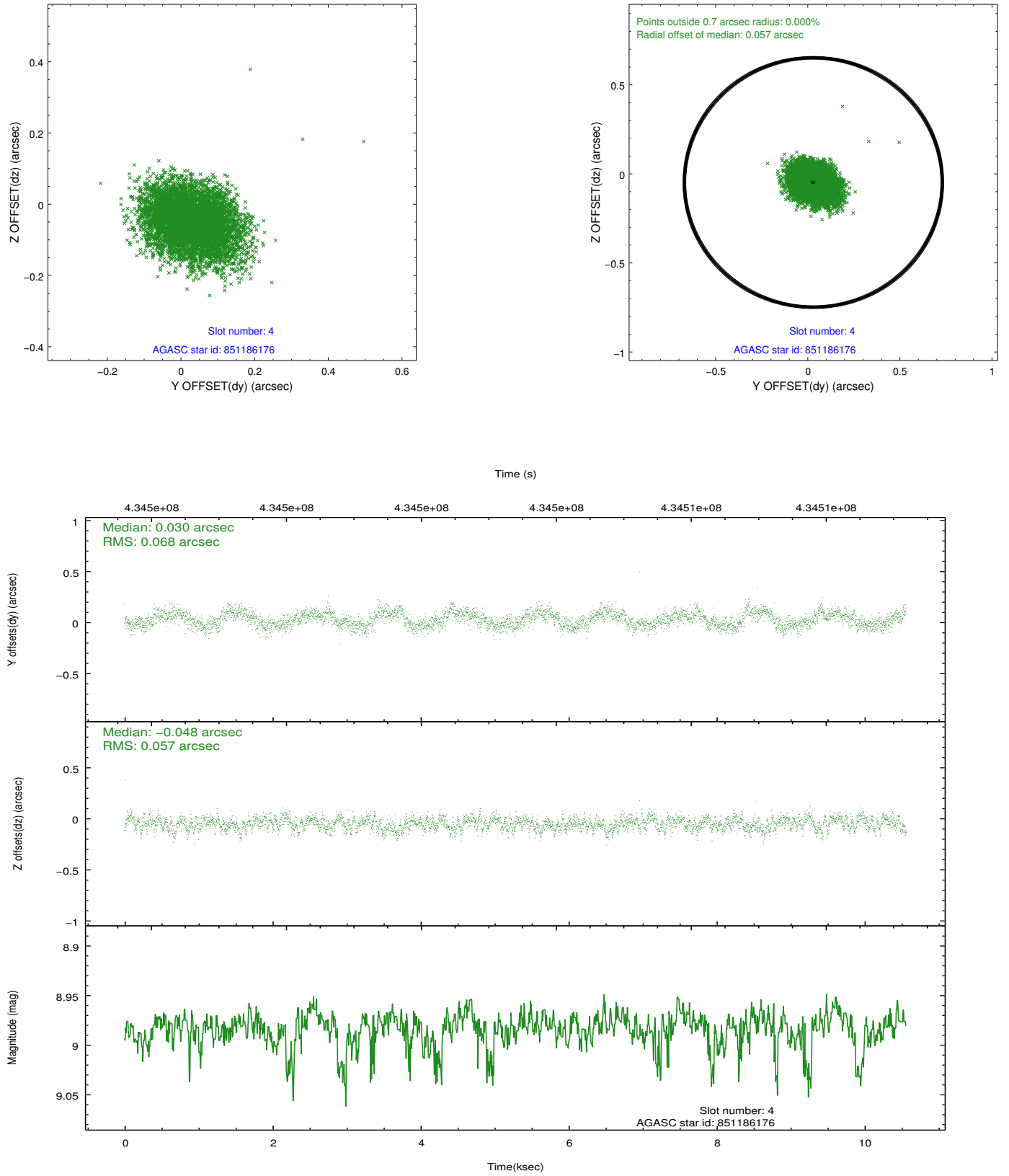
slot	status	id	mag	n_pts	med_dy	med_dz	dr1	dr2	ra	dec	mean_y	mean_z
0	FID	ACIS-I-1	7.00	2577	0.045	0.012	0.009	0.026	0.000000	0.000000	928.10	-836.90
1	FID	ACIS-I-5	7.00	2577	-0.196	0.060	0.009	0.022	0.000000	0.000000	-1819.99	1060.37
2	FID	ACIS-I-6	7.00	2577	0.060	-0.001	0.008	0.014	0.000000	0.000000	393.10	1705.39
3	GUIDE	851184160	9.12	5151	0.136	-0.035	0.102	0.172	87.697194	-25.728119	-424.43	-1864.66
4	GUIDE	851186176	8.98	5149	0.030	-0.048	0.095	0.149	87.362781	-25.803622	-928.86	-866.87
5	GUIDE	851192480	8.60	5153	0.005	-0.035	0.064	0.105	87.072856	-26.133310	-2294.72	-216.06
6	GUIDE	851194416	8.38	5152	0.131	0.101	0.078	0.122	87.786630	-25.693990	-241.94	-2120.35
7	GUIDE	851327888	7.46	5152	-0.296	0.018	0.098	0.156	87.976338	-25.219283	1560.32	-2350.79

2.4 Star Slots

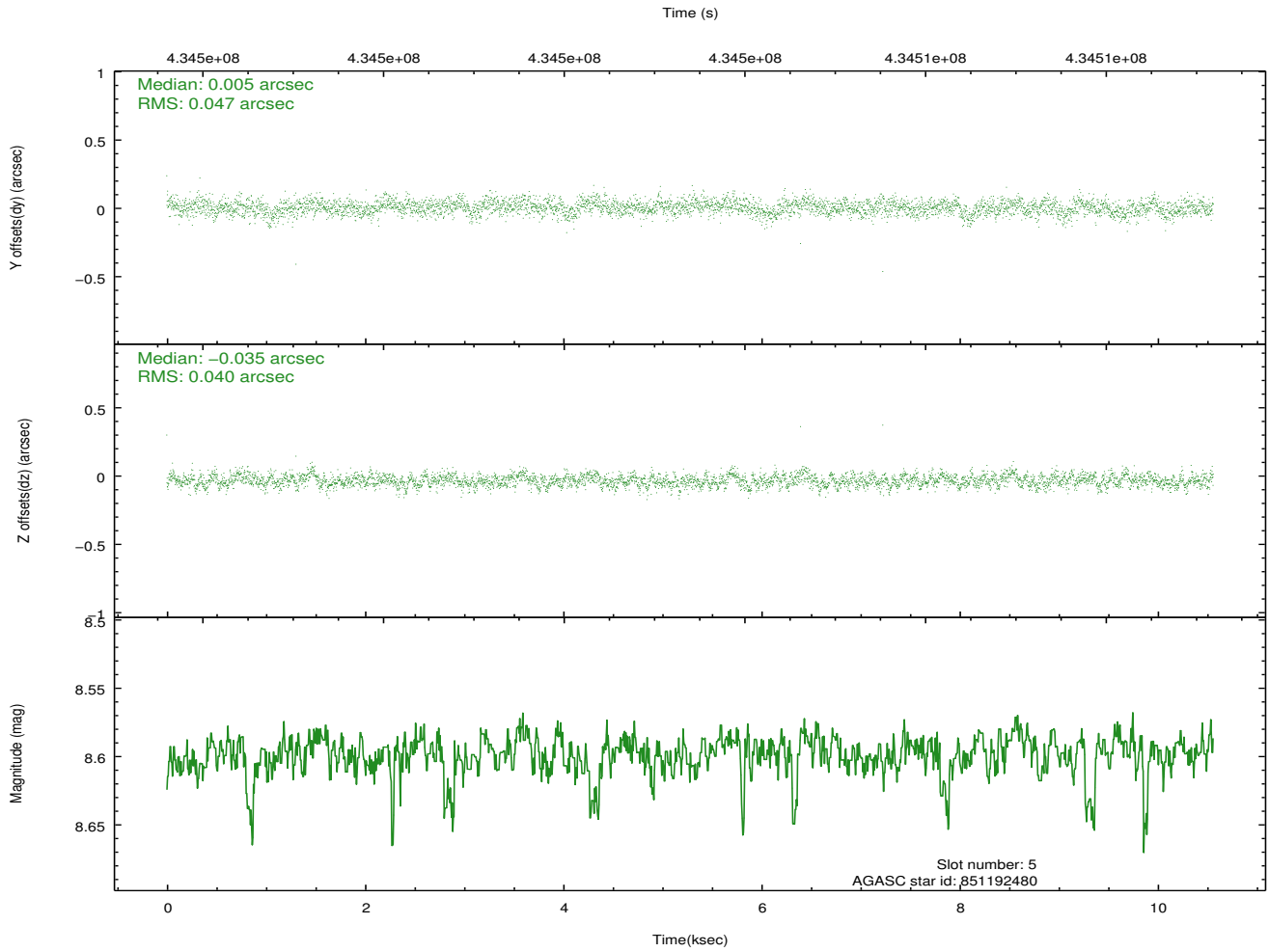
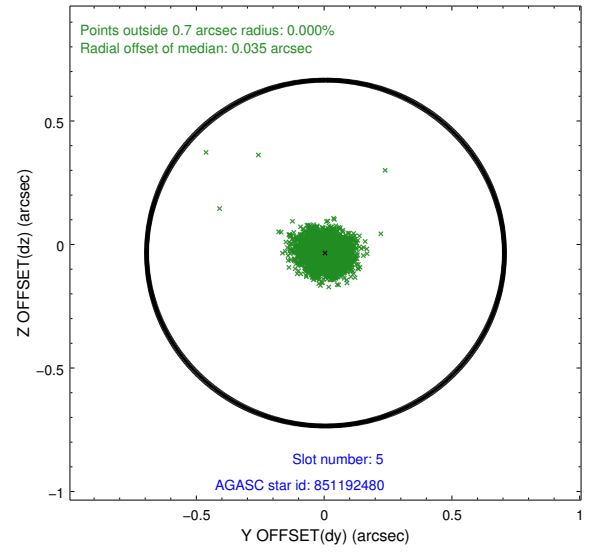
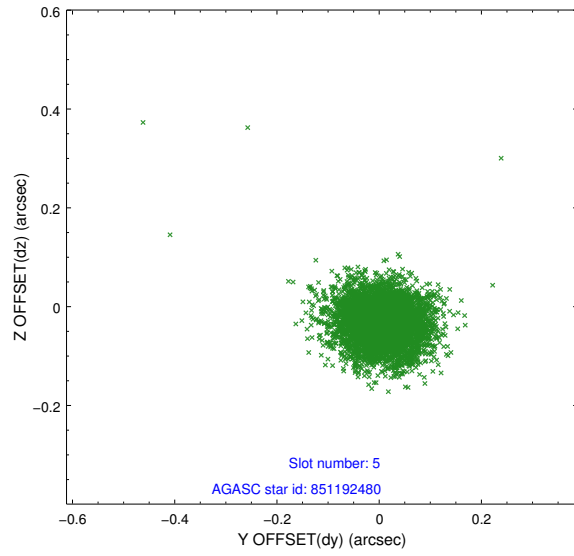
2.4.1 Slot 3



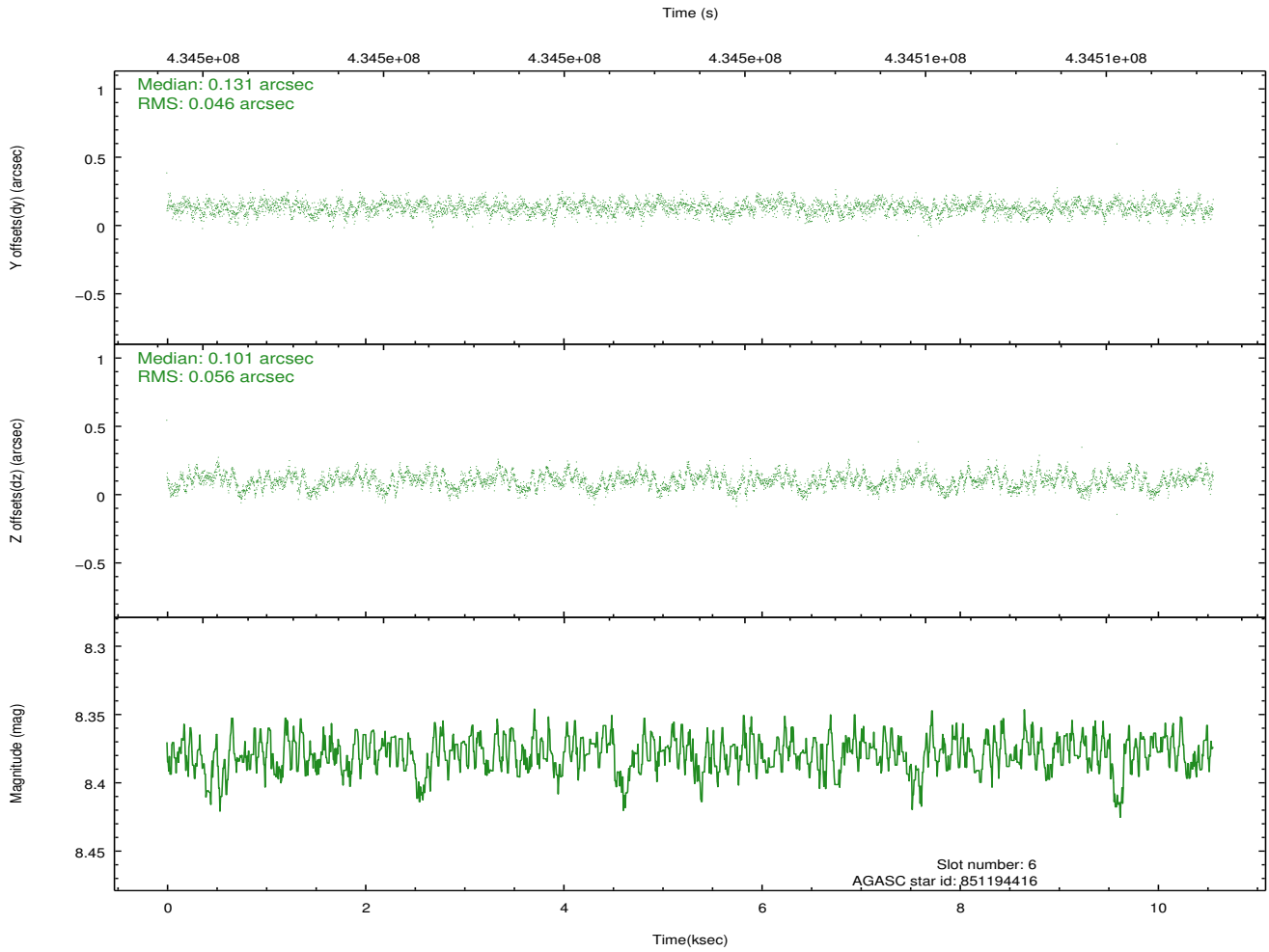
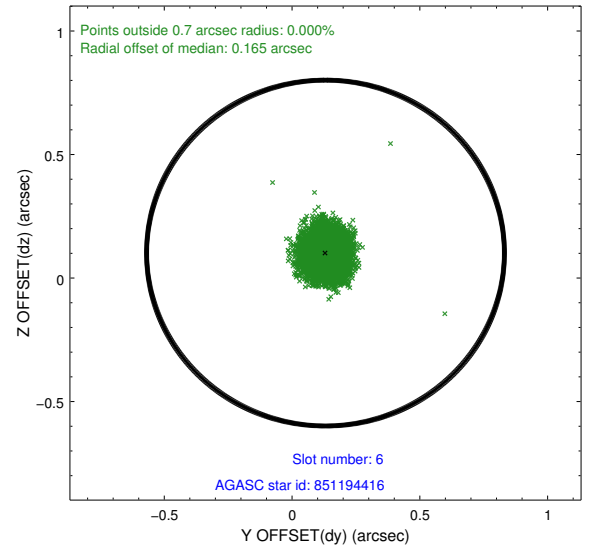
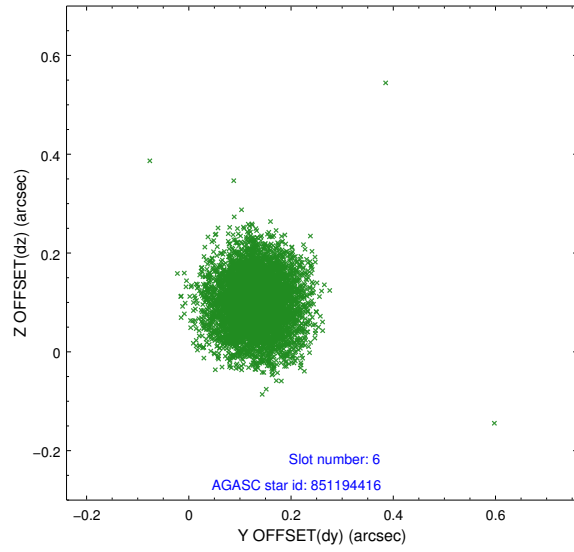
2.4.2 Slot 4



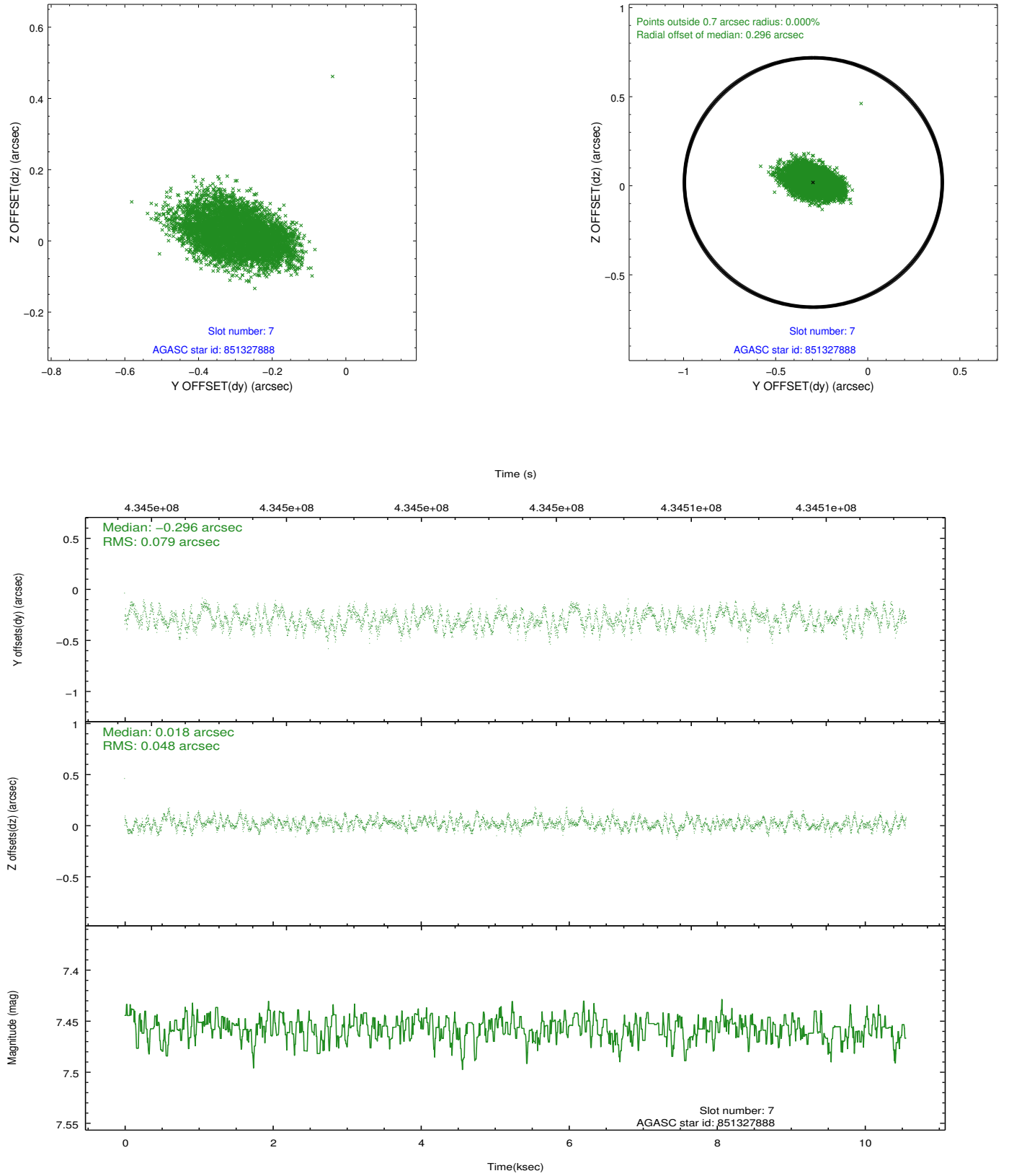
2.4.3 Slot 5



2.4.4 Slot 6

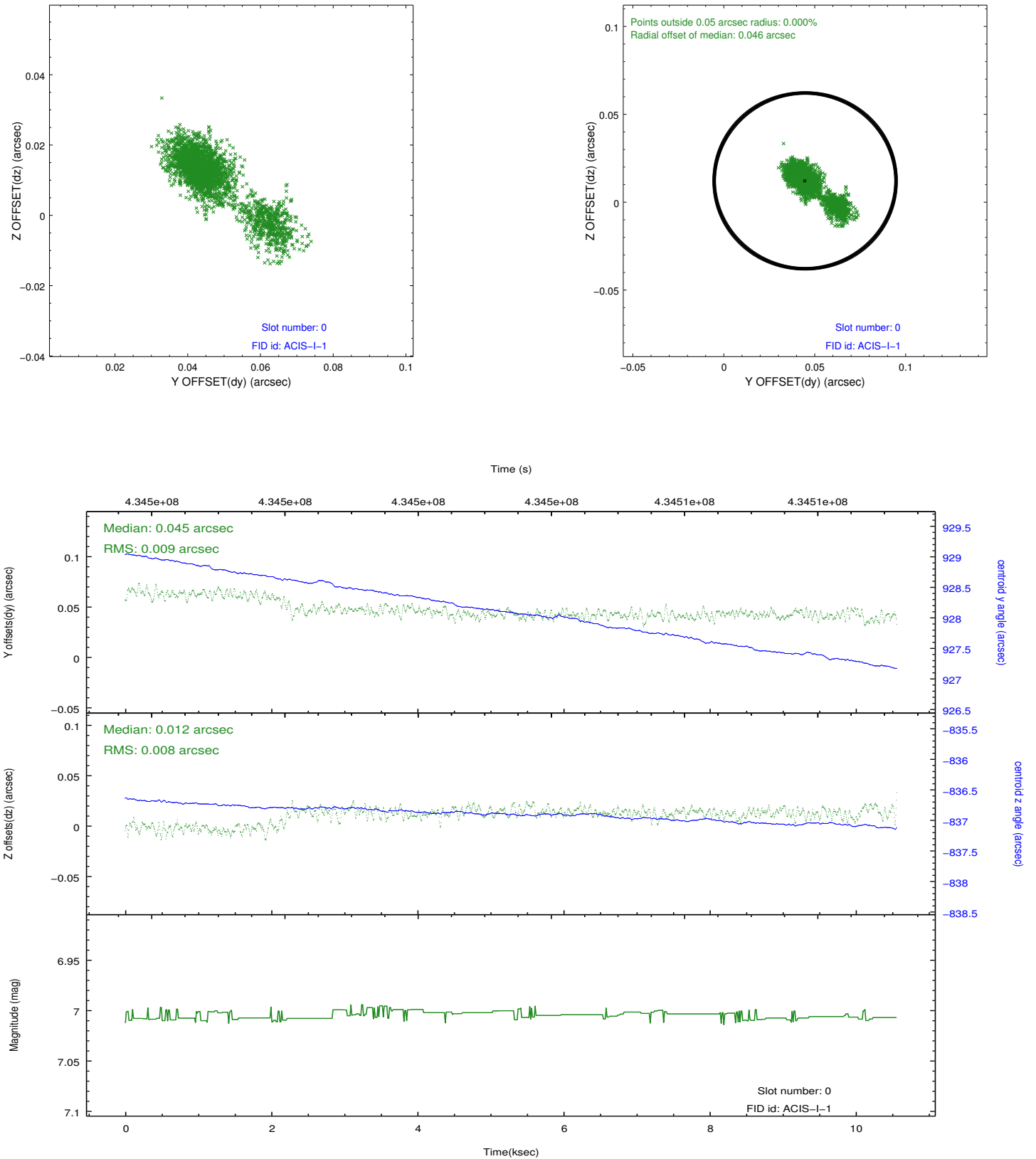


2.4.5 Slot 7

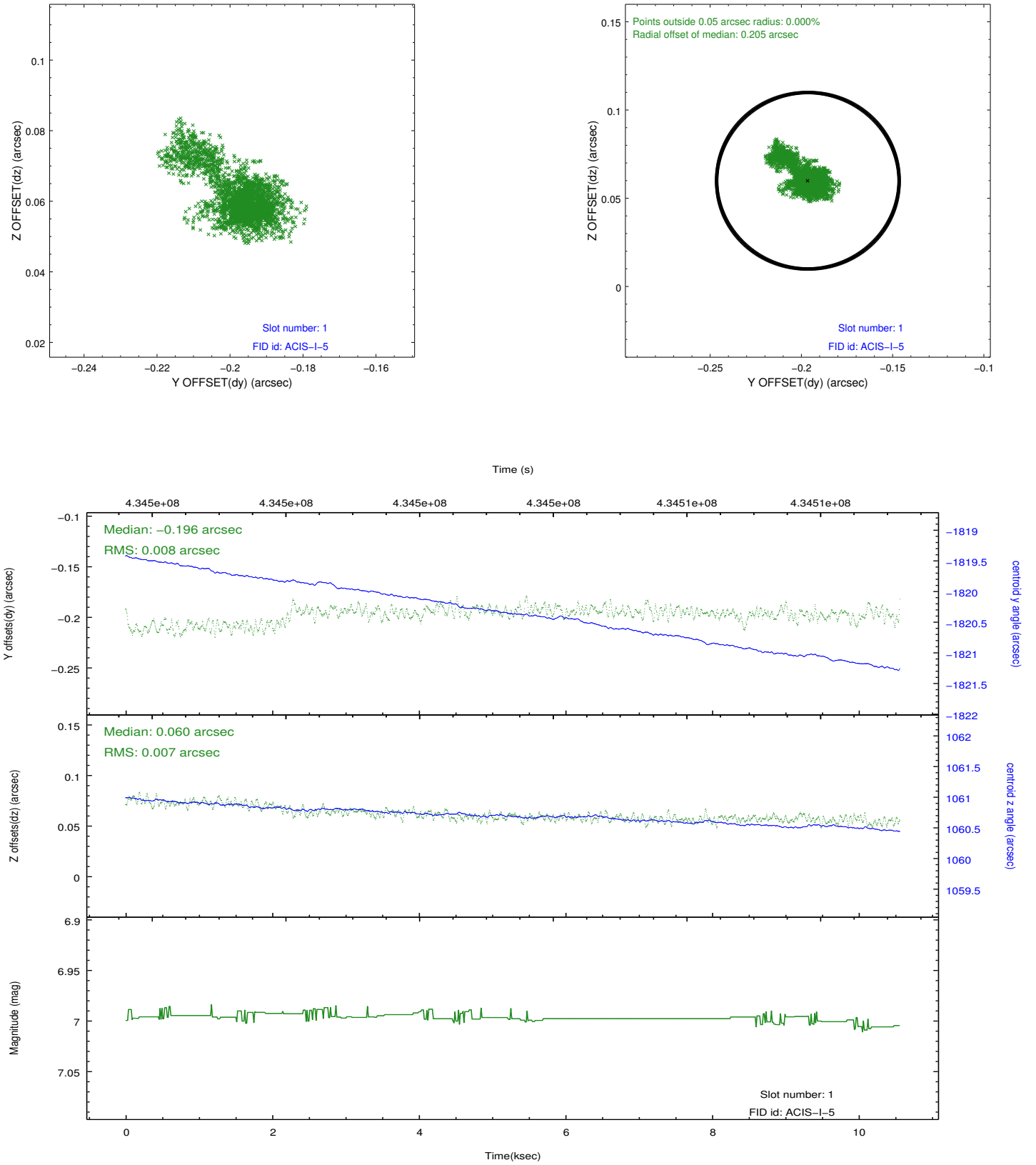


2.5 FID Slots

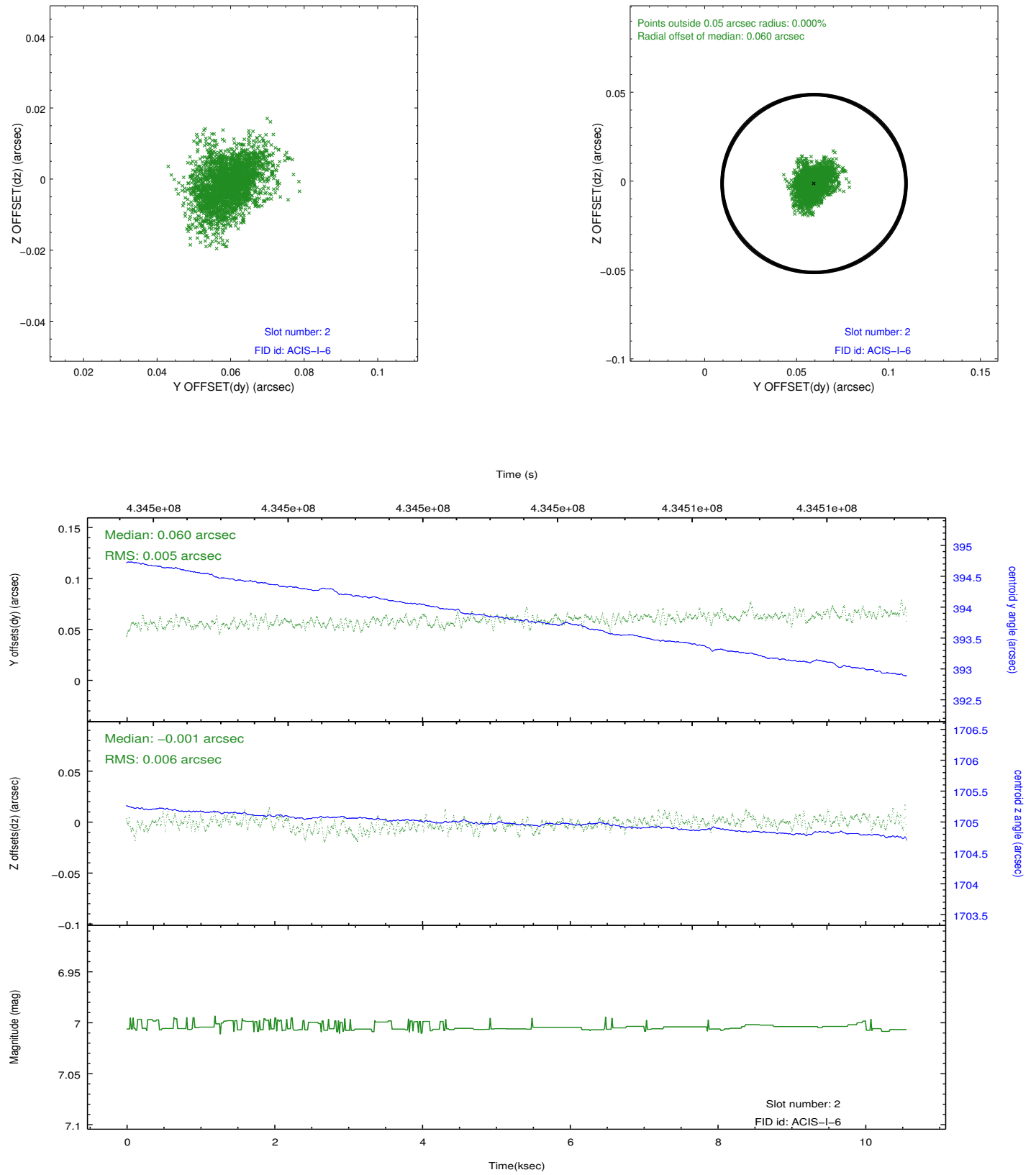
2.5.1 Slot 0



2.5.2 Slot 1



2.5.3 Slot 2



A Summary

A.1 Status

V&V Scientist	Jen Lauer
V&V Date (YYYY-MM-DD)	2012.02.24
V&V Edition	1
V&V Disposition and Status	OK
V&V Charge Time	10.059500077367

A.2 Comments