

V&V Reference Report

L2 ASCDS Version : 8.4.5

Observation 12187 - L2 Version 2
Chandra X-Ray Center

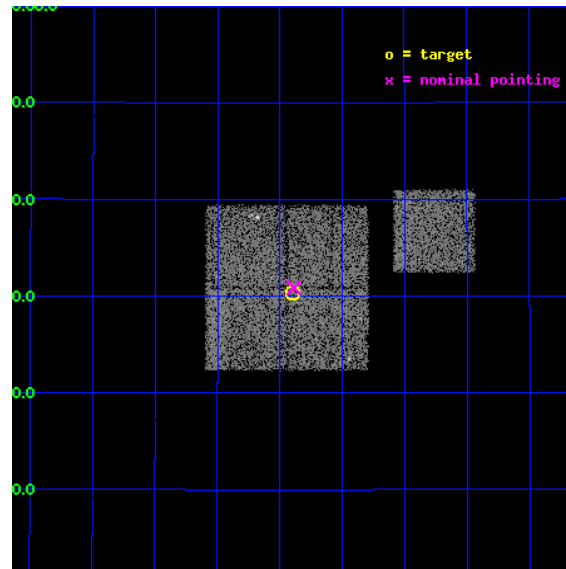
L2 Processing Date : Jul 8 2012

Contents

1	Front	2
2	OBI	3
2.1	OBI	3
2.1.1	Images	3
2.1.2	Bias	3
2.1.3	Parameters	4
2.1.4	Events	4
2.2	Compared Parameters	5
2.3	Aspect	6
2.4	Star Slots	9
2.4.1	Slot 3	9
2.4.2	Slot 4	10
2.4.3	Slot 5	11
2.4.4	Slot 6	12
2.4.5	Slot 7	13
2.5	FID Slots	14
2.5.1	Slot 0	14
2.5.2	Slot 1	15
2.5.3	Slot 2	16
A	Summary	17
A.1	Status	17
A.2	Comments	17

1 Front

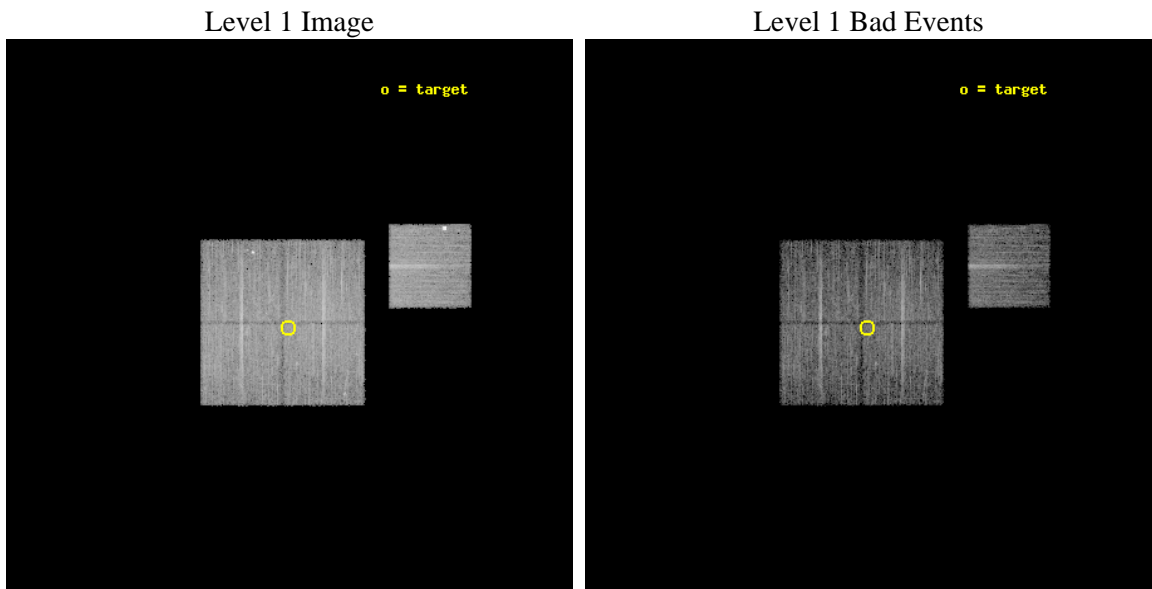
seq_num	800953	Sequence number
obs_id	12187	Observation id
title	Confronting Shear Lensing Mass Measurements with Chandra	Proposal
observer	Dr. Stephen Murray	Principal investigator
object	L6-L9	Source name
dtcycle	0	
cycle	P	events from which exps? Prim/Second/Both
ra_targ	140.34992	Observer's specified target RA [deg]
dec_targ	29.506734	Observer's specified target Dec [deg]
ra_nom	140.34710329098	Nominal RA [deg]
dec_nom	29.514441488546	Nominal Dec [deg]
roll_nom	90.002332134269	Nominal Roll [deg]
revision	2	Processing version of data
ontime	9767.1431632638	Sum of GTIs [s]
livetime	9639.5282473696	Livetime [s]
ontime0	9773.3020744324	Sum of GTIs [s]
ontime1	9770.2020841241	Sum of GTIs [s]
ontime2	9773.384154439	Sum of GTIs [s]
ontime3	9767.1431632638	Sum of GTIs [s]
ontime6	9770.1200041771	Sum of GTIs [s]
l2events	32816	Number of level 2 events



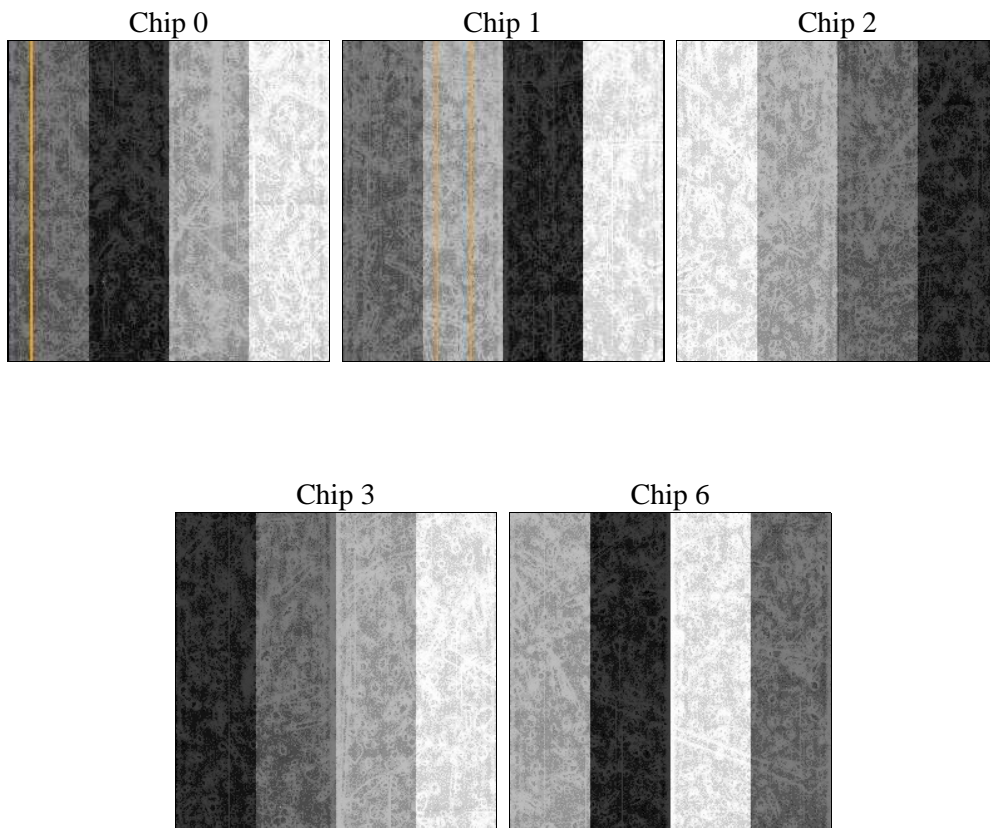
2 OBI

2.1 OBI

2.1.1 Images



2.1.2 Bias



2.1.3 Parameters

obi_num	0	Obi number	sched_exp_time	10000.795000	[s] Scheduled observation exposure time
ascdsver	8.4.5	Processing system revision	ontime	9767.1431632638	Sum of GTIs [s]
caldsver	4.5.0	 	ontime0	9773.3020744324	Sum of GTIs [s]
date	2012-07-08T20:59:26	Date and time of file creation	ontime1	9770.2020841241	Sum of GTIs [s]
revision	2	Processing version of data	ontime2	9773.384154439	Sum of GTIs [s]
			ontime3	9767.1431632638	Sum of GTIs [s]
			ontime6	9770.1200041771	Sum of GTIs [s]
			l1events	337311	Number of level 1 events

2.1.4 Events

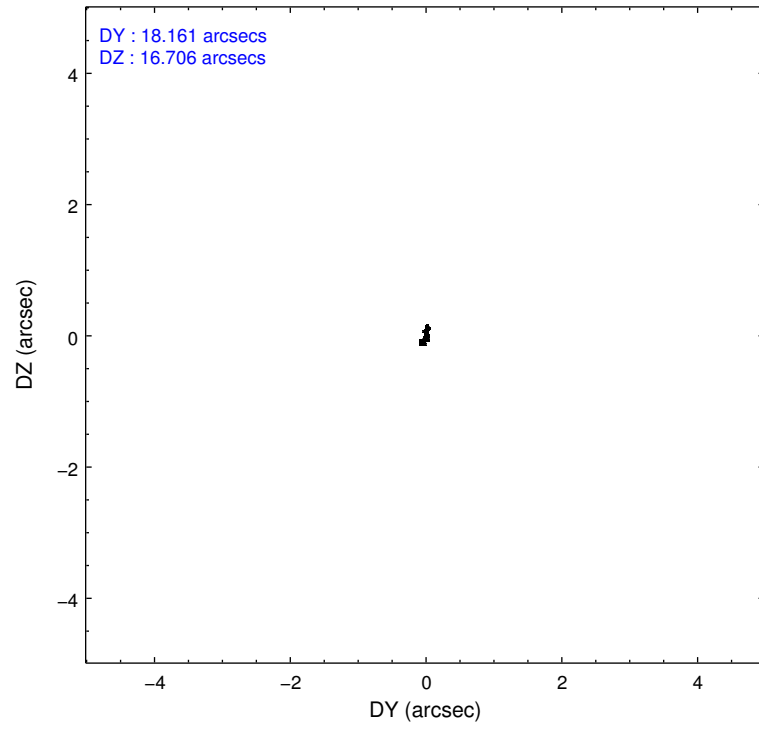
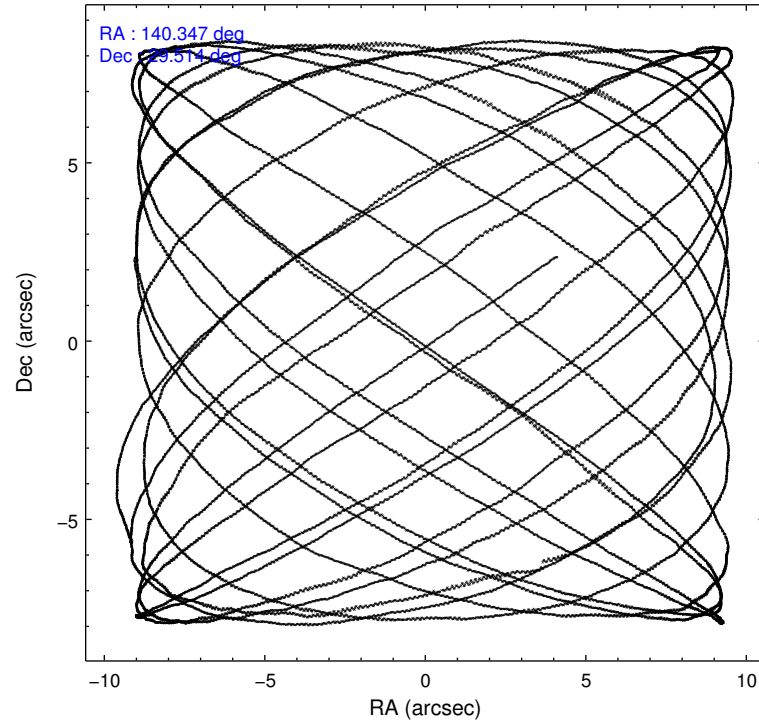
	ccd 0	ccd 1	ccd 2	ccd 3	ccd 6
level 1 events	62145	65729	70069	66233	73135
rejected events	53787	57314	62696	59039	62482
rejected %	86%	87%	89%	89%	85%

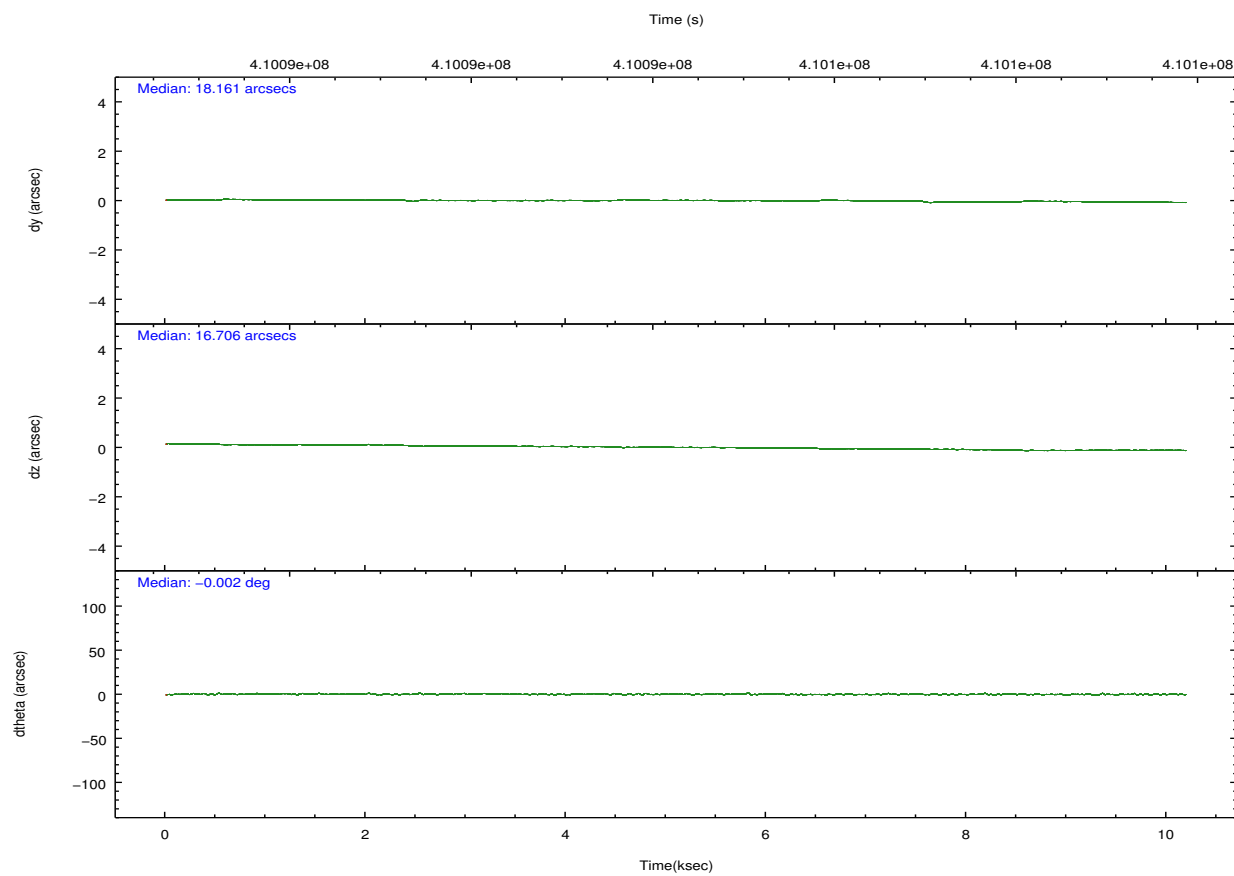
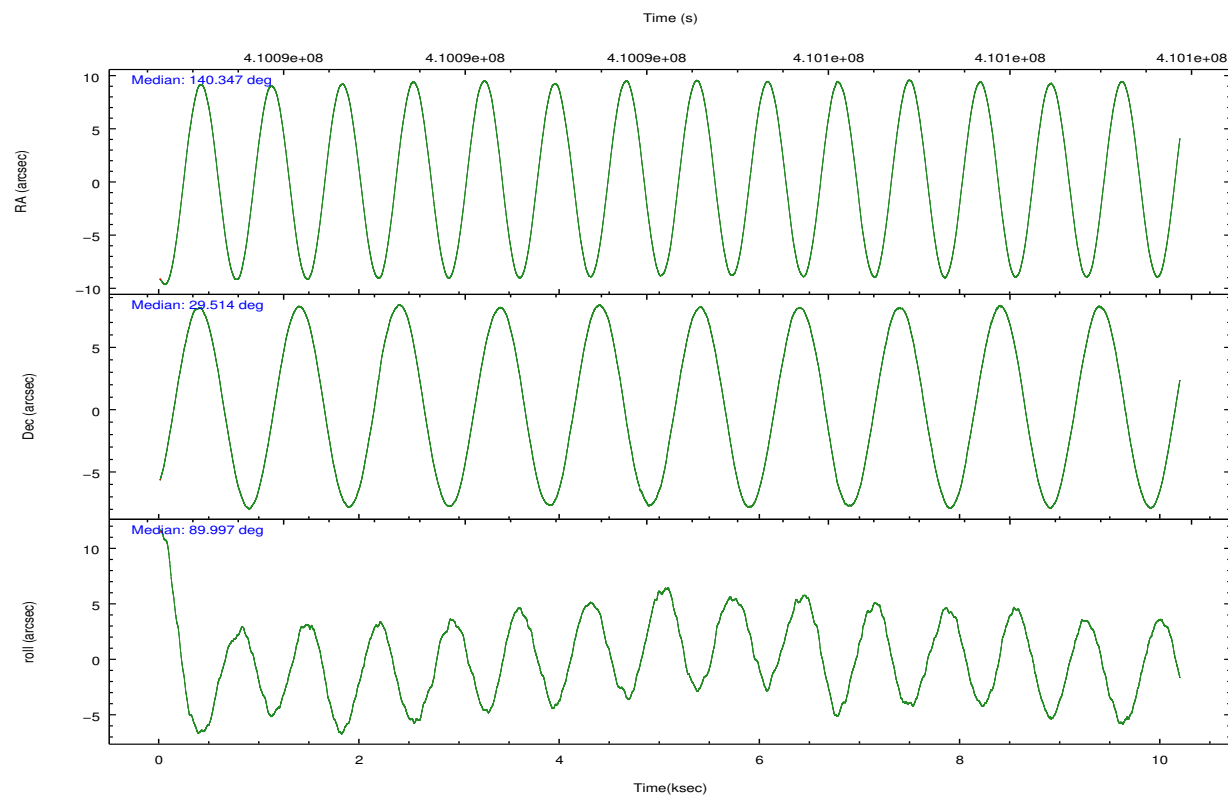
	ccd 0	ccd 1	ccd 2	ccd 3	ccd 6
grade 0 events	3348	3018	2608	2502	5610
	5%	4%	3%	3%	7%
grade 1 events	38	40	41	51	49
	0%	0%	0%	0%	0%
grade 2 events	1922	1926	1803	1613	1719
	3%	2%	2%	2%	2%
grade 3 events	830	877	798	802	806
	1%	1%	1%	1%	1%
grade 4 events	773	864	759	791	806
	1%	1%	1%	1%	1%
grade 5 events	2903	3157	2825	3303	3053
	4%	4%	4%	4%	4%
grade 6 events	1491	1733	1408	1487	1717
	2%	2%	2%	2%	2%
grade 7 events	50840	54114	59827	55684	59375
	81%	82%	85%	84%	81%

2.2 Compared Parameters

Parameter	Planned	Actual	Parameter	Planned	Actual
Instrument	ACIS	ACIS	Obspar format version number	7	7
Detector	ACIS-01236	ACIS-01236	Obspar file type	PREDICTED	ACTUAL
Grating	NONE	NONE	Obspar update status	NONE	UPDATED
Data mode	VFAINT	VFAINT	CCD I0 on	Y	Y
Observation mode	POINTING	POINTING	CCD I1 on	Y	Y
[deg] Pointing RA	140.363060	140.3471032909793	CCD I2 on	Y	Y
[deg] Pointing Dec	29.490689	29.51444148854593	CCD I3 on	Y	Y
[deg] Pointing Roll	89.785786	90.00233213426935	CCD S0 on	N	N
[mm] SIM focus pos	-0.782348	-0.7809083437167272	CCD S1 on	N	N
[mm] SIM defocus	0	0.001439871863259334	CCD S2 on	O1	Y
[mm] SIM translation stage pos	-233.592463	-233.5874344608287	CCD S3 on	N	N
[mm] SIM translation stage offset	0	-0.005018542100998502	CCD S4 on	N	N
[s] Observation start time (MET)	410089353.184000	410088977.74044	CCD S5 on	N	N
Observation start date	2010-12-30T09:41:27	2010-12-30T09:36:17	Number of optional ACIS chips dropped	0	0
[s] Observation end time (MET)	410099354.184000	410099591.10349	On-chip summing requested	N	N
Observation end date	2010-12-30T12:28:08	2010-12-30T12:33:11	Subarray requested	NONE	NONE
Read mode	TIMED	TIMED	Alternating exposures requested	N	N
			[s] Primary exposure time	0.000000	3.1

2.3 Aspect



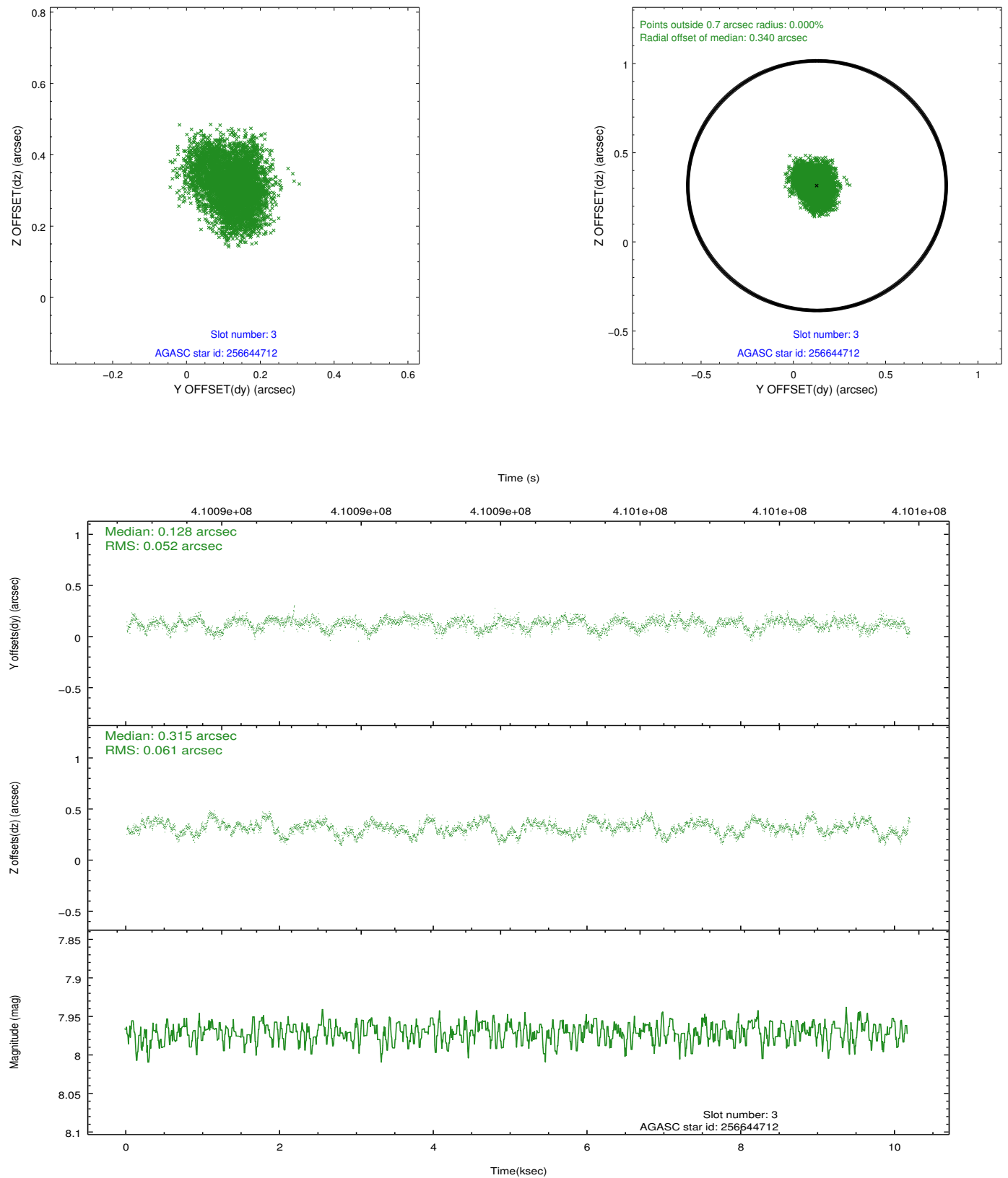


Slot Statistics

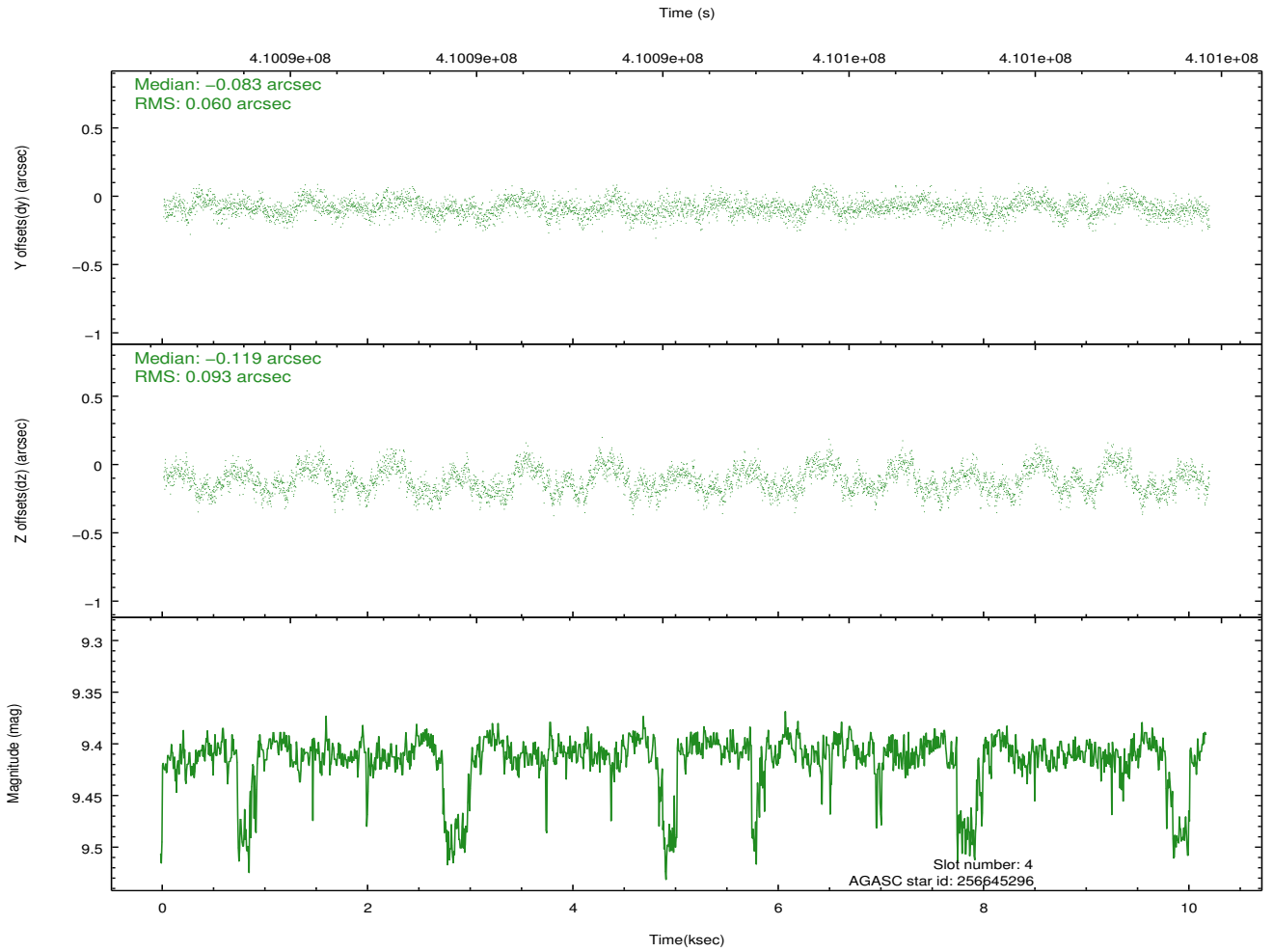
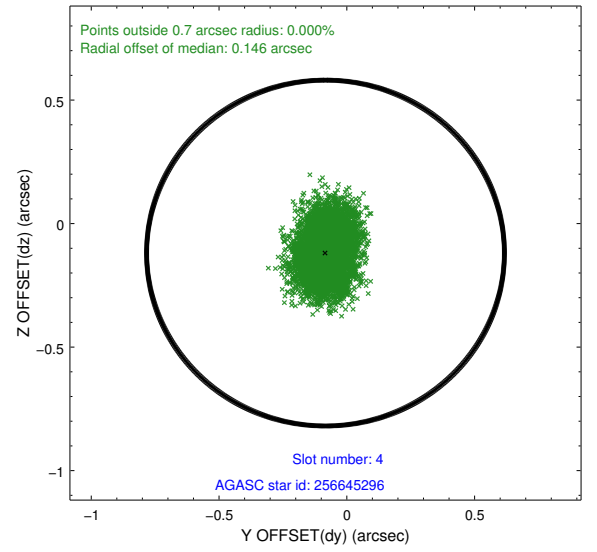
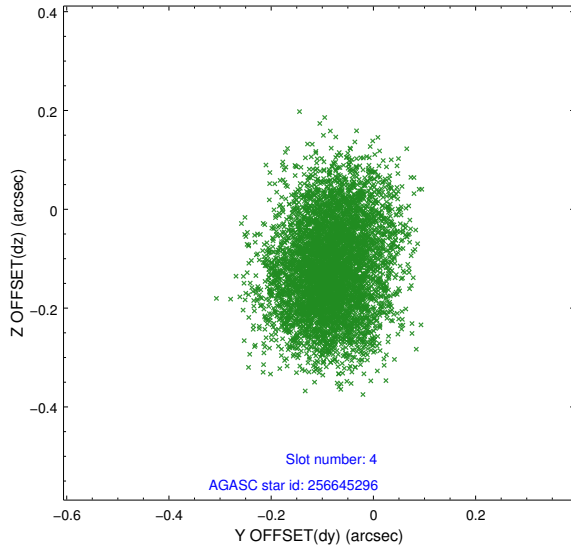
slot	status	id	mag	n_pts	med_dy	med_dz	dr1	dr2	ra	dec	mean_y	mean_z
0	FID	ACIS-I-1	7.06	2485	0.059	-0.020	0.006	0.011	0.000000	0.000000	921.28	-840.37
1	FID	ACIS-I-5	7.05	2485	-0.243	0.055	0.007	0.012	0.000000	0.000000	-1826.84	1056.94
2	FID	ACIS-I-6	7.07	2485	0.092	0.035	0.007	0.012	0.000000	0.000000	386.30	1702.01
3	GUIDE	256644712	7.97	4969	0.128	0.315	0.088	0.137	140.459118	28.897591	-2133.85	-310.67
4	GUIDE	256645296	9.41	4957	-0.083	-0.119	0.119	0.190	139.853345	29.315976	-631.96	1597.28
5	GUIDE	256646640	8.16	4966	-0.193	-0.327	0.112	0.170	139.706384	29.820517	1184.67	2056.57
6	GUIDE	256646824	9.51	4967	-0.006	0.185	0.151	0.233	140.115139	29.721974	830.88	778.77
7	GUIDE	326904496	9.63	4968	0.159	-0.060	0.147	0.253	141.156023	30.122423	2292.58	-2460.16

2.4 Star Slots

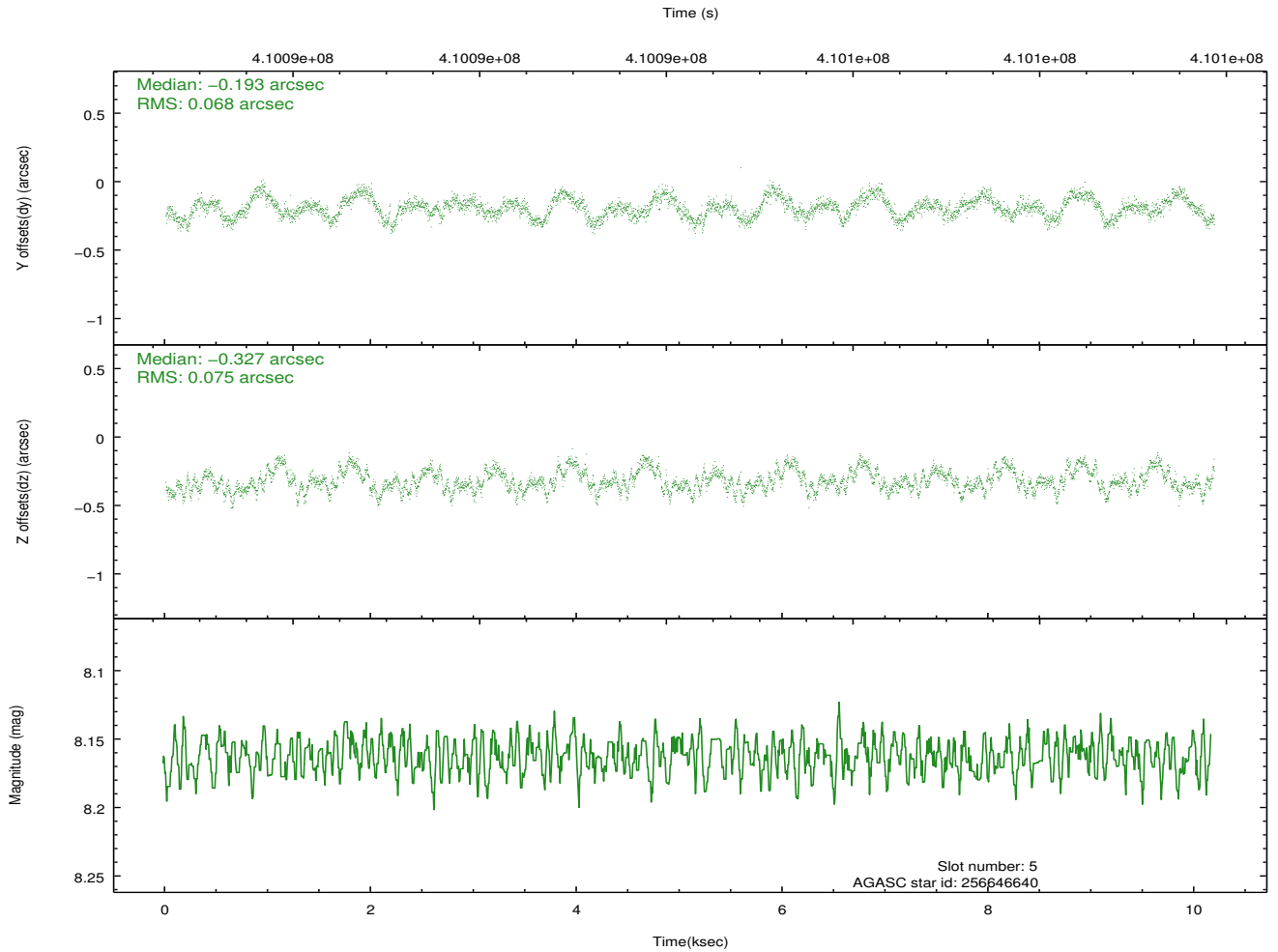
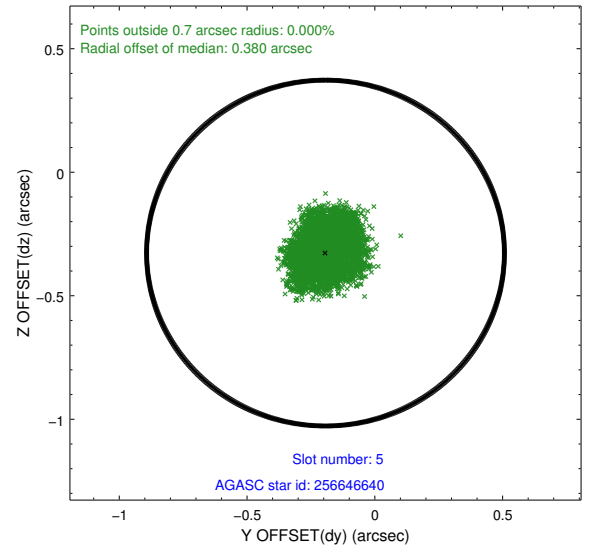
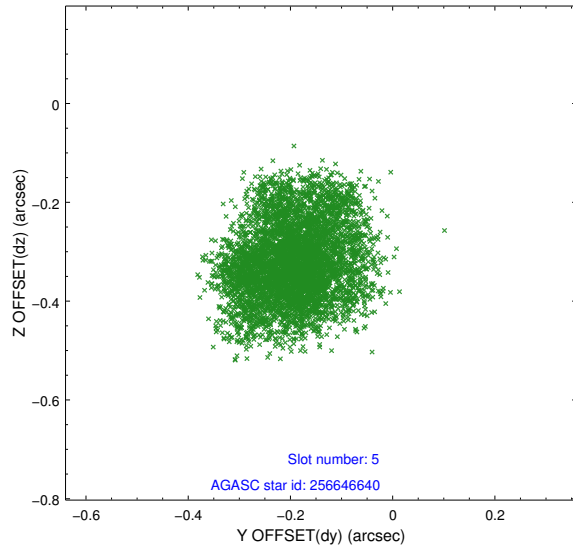
2.4.1 Slot 3



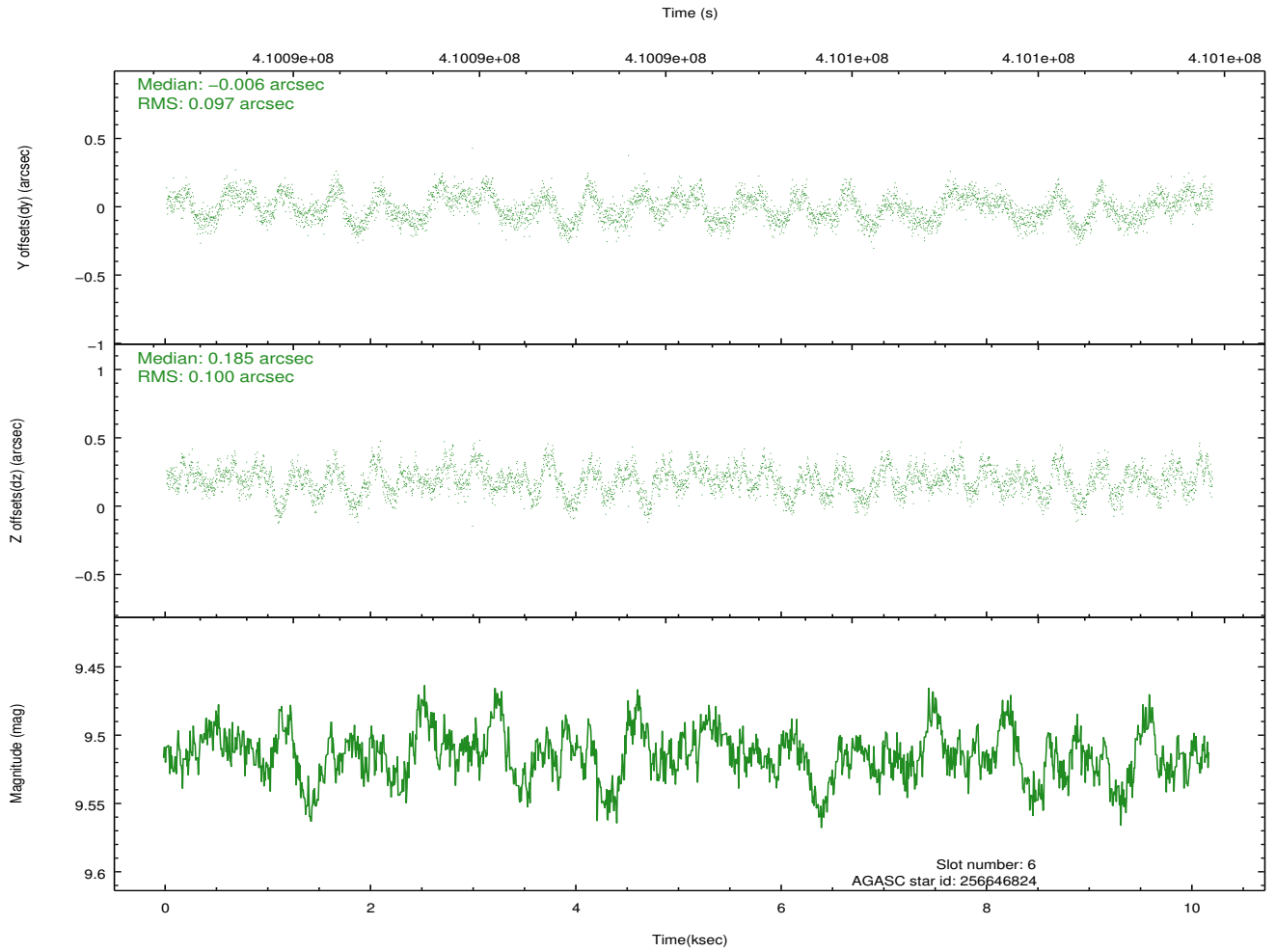
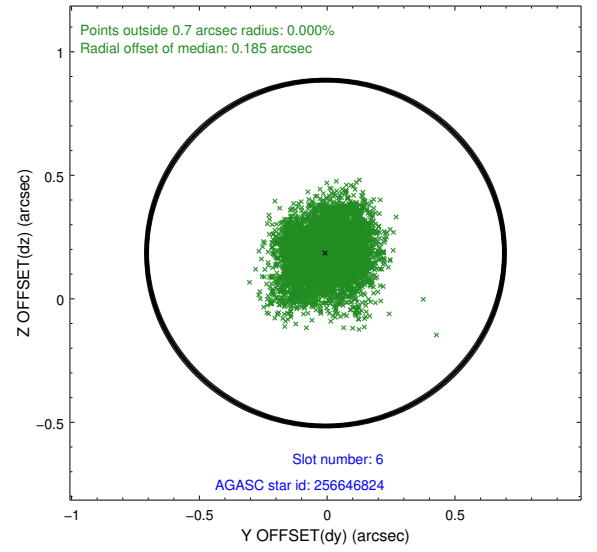
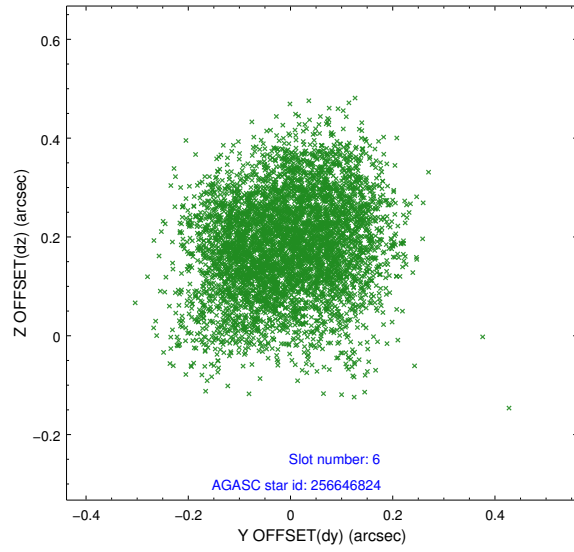
2.4.2 Slot 4



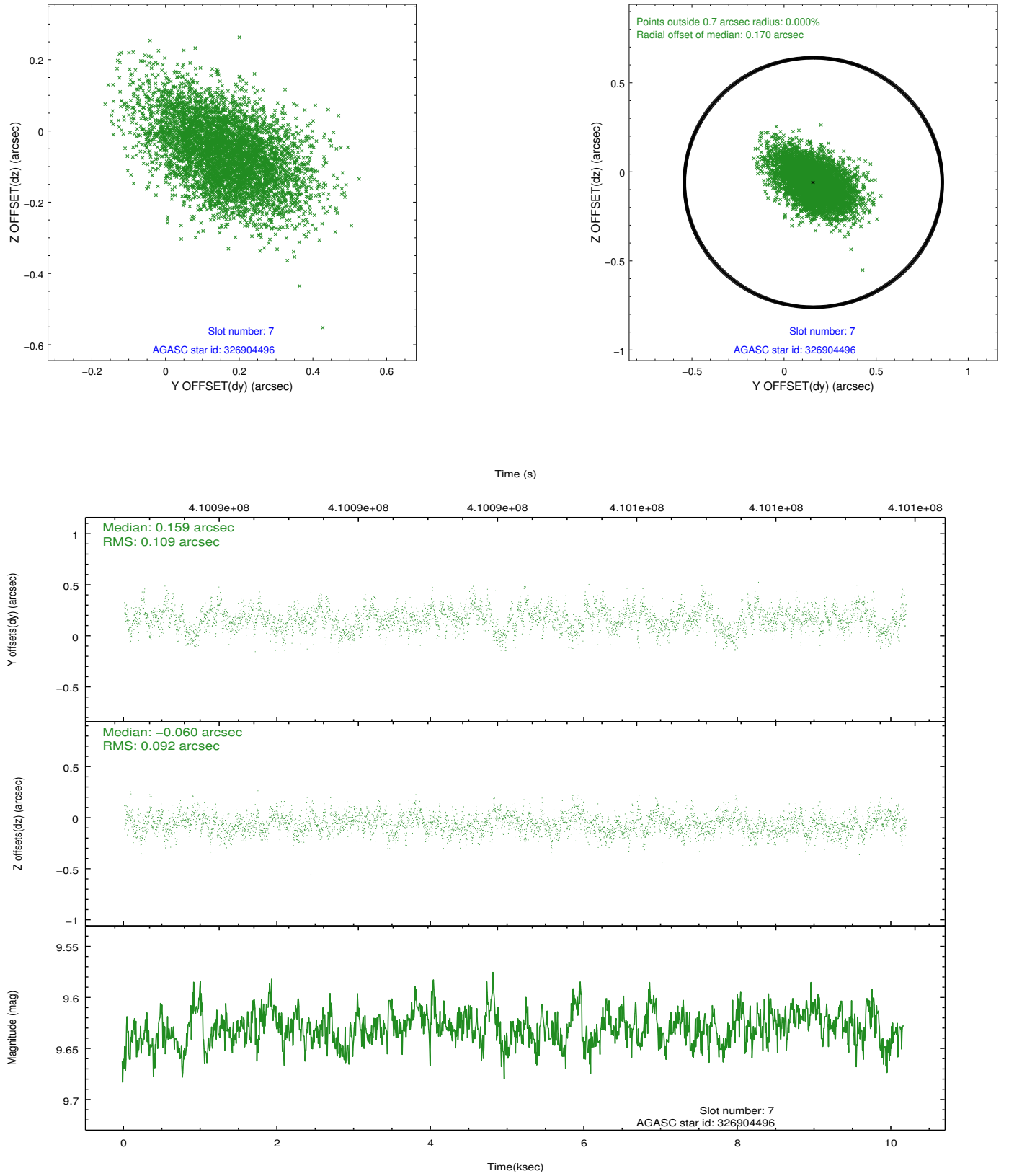
2.4.3 Slot 5



2.4.4 Slot 6

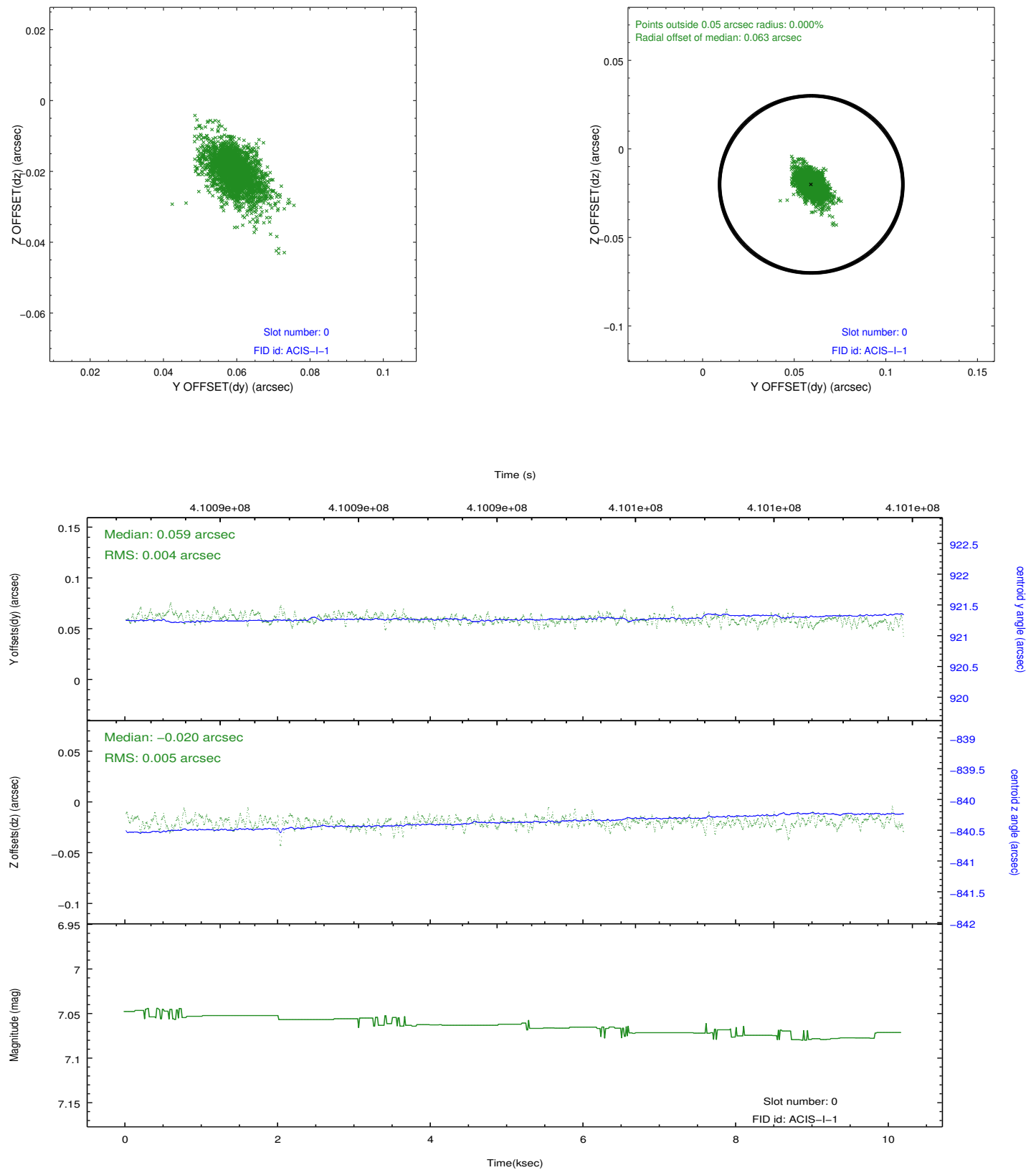


2.4.5 Slot 7

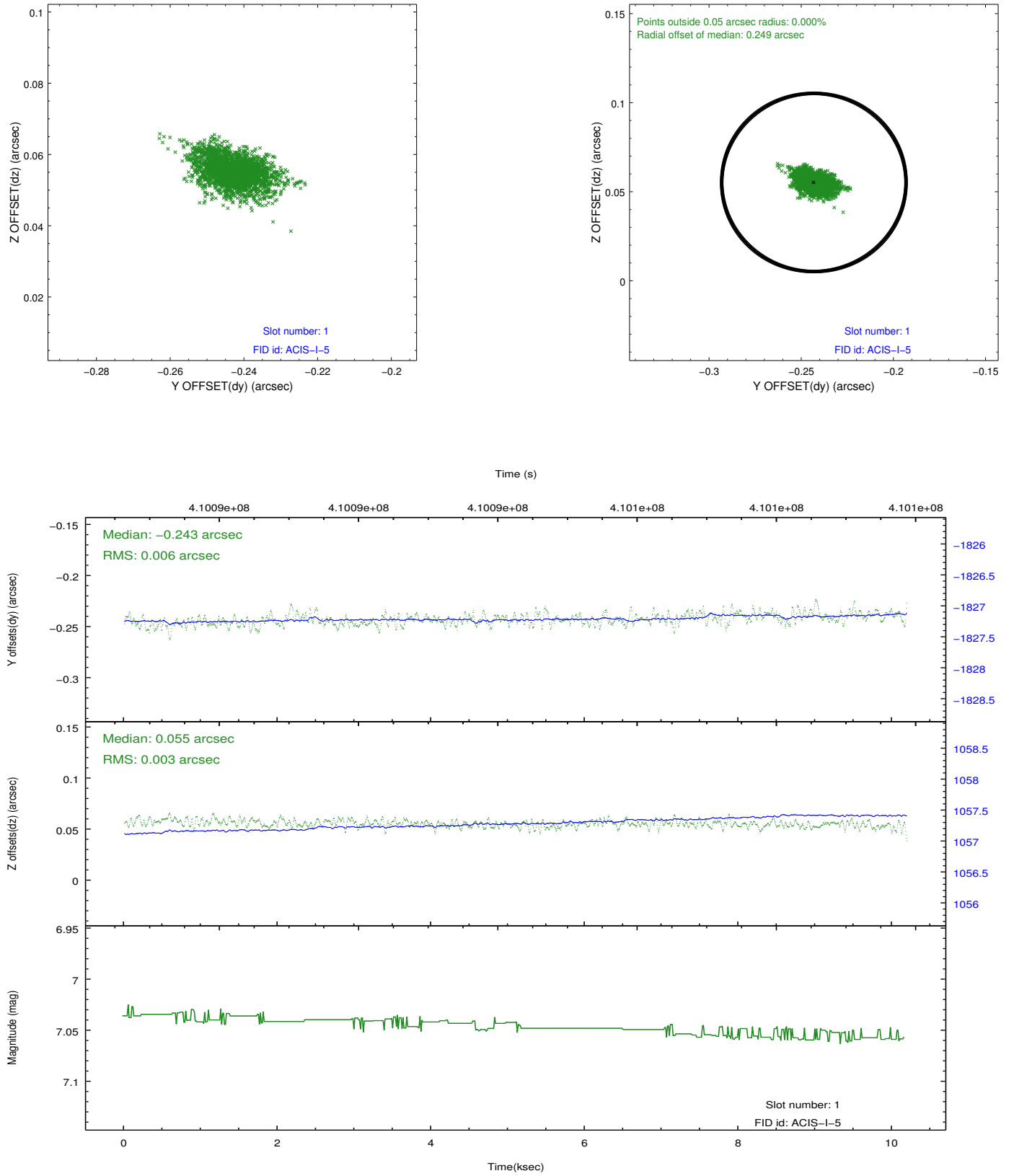


2.5 FID Slots

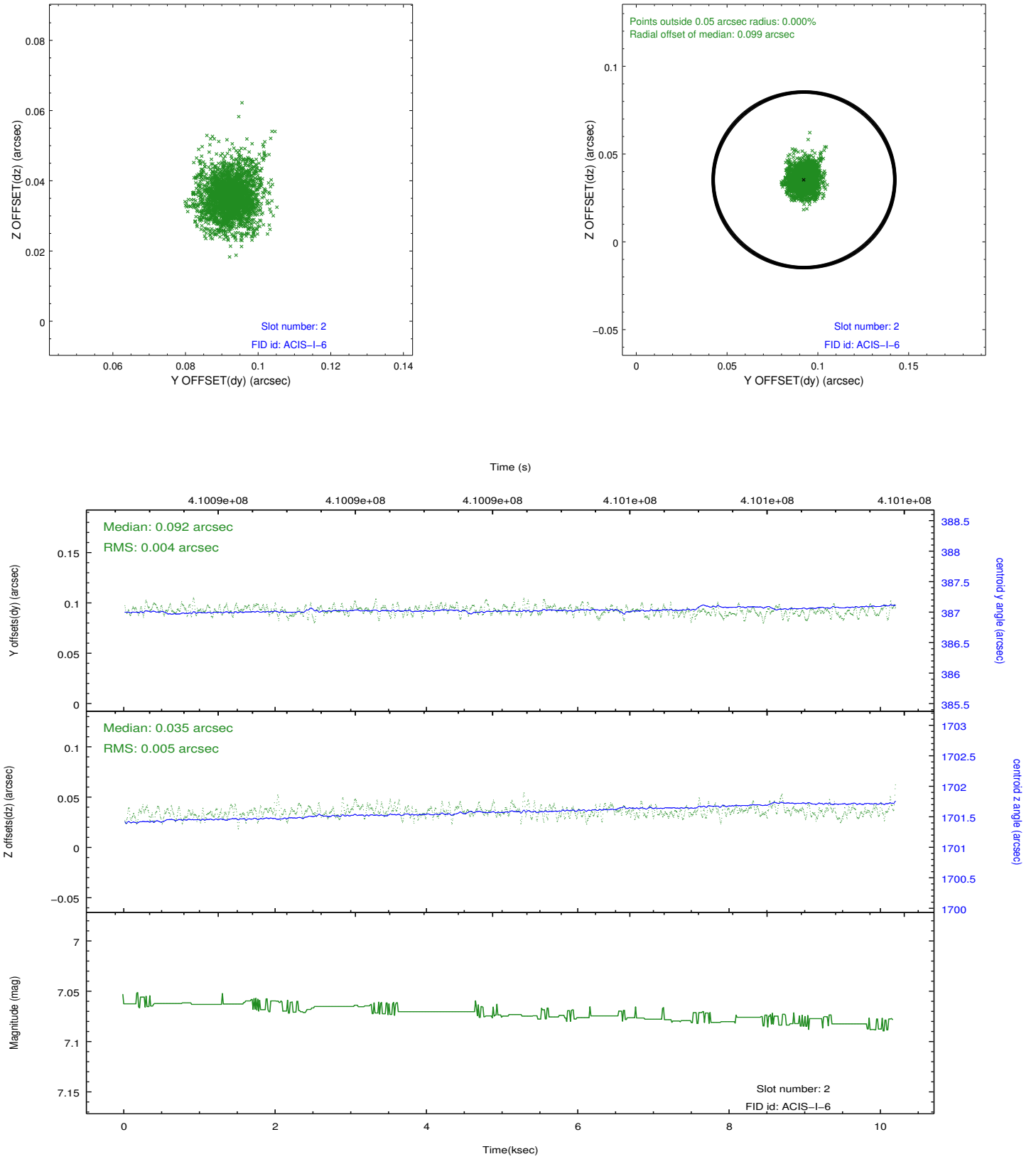
2.5.1 Slot 0



2.5.2 Slot 1



2.5.3 Slot 2



A Summary

A.1 Status

V&V Scientist	Jen Lauer
V&V Date (YYYY-MM-DD)	2012.07.18
V&V Edition	1
V&V Disposition and Status	OK
V&V Charge Time	9.7671431639791

A.2 Comments

Node 2 on CCD 0 has a slightly enhanced feature that is about 4 columns wide. The elevated adu values in this feature are only about 2 adu higher than the median adu value of that node. We do not repair bias maps with 'exacto-knife' features less than 5 adu elevated from the mean of that particular node. Therefore, no correction had been made to the bias maps for this obsid. The user can request such a correction if the scientific value is affected.