

V&V Reference Report

L2 ASCDS Version : 8.4.5

Observation 12186 - L2 Version 2
Chandra X-Ray Center

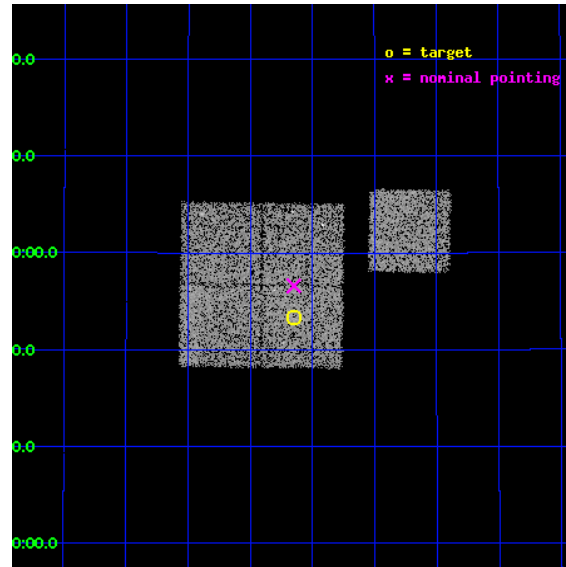
L2 Processing Date : Jul 8 2012

Contents

1	Front	2
2	OBI	3
2.1	OBI	3
2.1.1	Images	3
2.1.2	Bias	3
2.1.3	Parameters	4
2.1.4	Events	4
2.2	Compared Parameters	5
2.3	Aspect	6
2.4	Star Slots	9
2.4.1	Slot 3	9
2.4.2	Slot 4	10
2.4.3	Slot 5	11
2.4.4	Slot 6	12
2.4.5	Slot 7	13
2.5	FID Slots	14
2.5.1	Slot 0	14
2.5.2	Slot 1	15
2.5.3	Slot 2	16
A	Summary	17
A.1	Status	17
A.2	Comments	17

1 Front

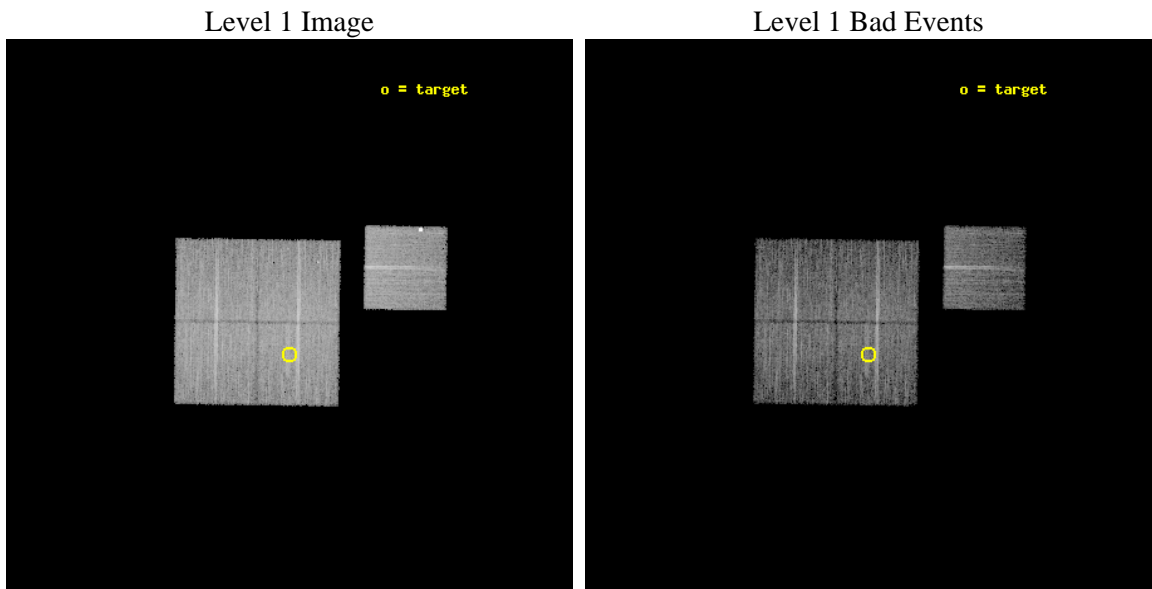
seq_num	800952	Sequence number
obs_id	12186	Observation id
title	Confronting Shear Lensing Mass Measurements with Chandra	Proposal
observer	Dr. Stephen Murray	Principal investigator
object	L5-V4	Source name
dtcycle	0	
cycle	P	events from which exps? Prim/Second/Both
ra_targ	139.661	Observer's specified target RA [deg]
dec_targ	29.889	Observer's specified target Dec [deg]
ra_nom	139.66229885699	Nominal RA [deg]
dec_nom	29.943448680418	Nominal Dec [deg]
roll_nom	90.816451614113	Nominal Roll [deg]
revision	2	Processing version of data
ontime	10052.840268135	Sum of GTIs [s]
livetime	9921.4925092385	Livetime [s]
ontime0	10049.576117873	Sum of GTIs [s]
ontime1	10043.335107207	Sum of GTIs [s]
ontime2	10052.799228132	Sum of GTIs [s]
ontime3	10052.840268135	Sum of GTIs [s]
ontime6	10052.676108122	Sum of GTIs [s]
l2events	33405	Number of level 2 events



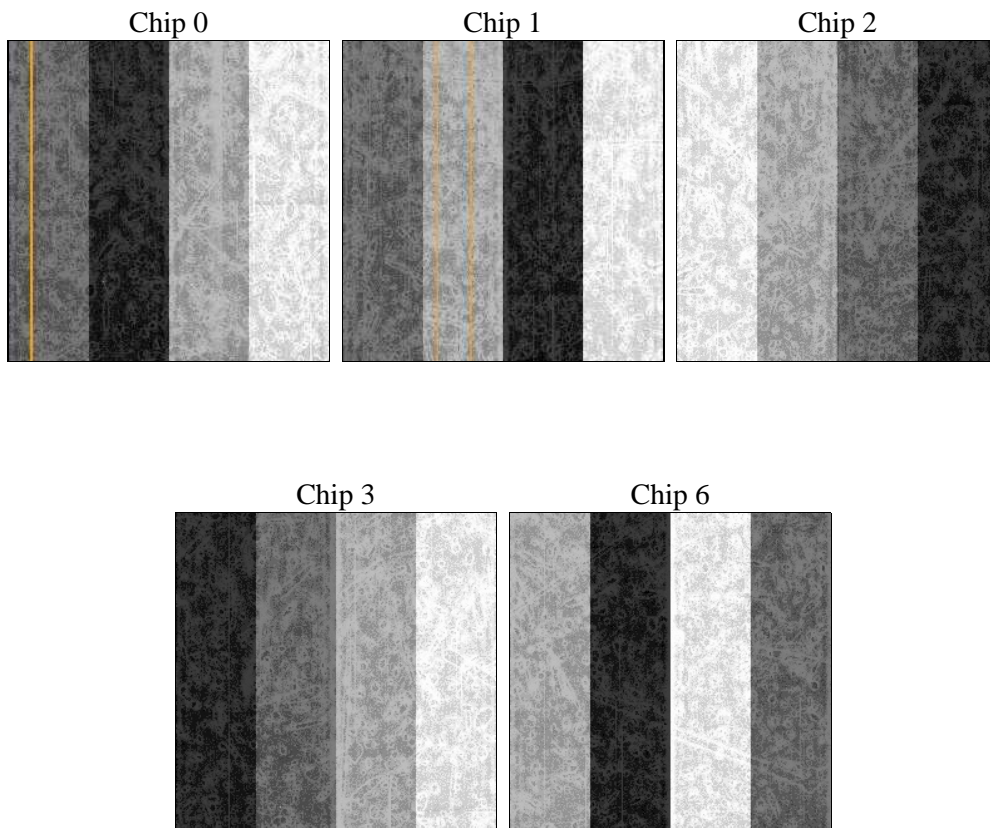
2 OBI

2.1 OBI

2.1.1 Images



2.1.2 Bias



2.1.3 Parameters

obi_num	0	Obi number	sched_exp_time	10000.000000	[s] Scheduled observation exposure time
ascdsver	8.4.5	Processing system revision	ontime	10052.840268135	Sum of GTIs [s]
caldsver	4.5.0	 	ontime0	10049.576117873	Sum of GTIs [s]
date	2012-07-08T20:51:10	Date and time of file creation	ontime1	10043.335107207	Sum of GTIs [s]
revision	2	Processing version of data	ontime2	10052.799228132	Sum of GTIs [s]
			ontime3	10052.840268135	Sum of GTIs [s]
			ontime6	10052.676108122	Sum of GTIs [s]
			l1events	346138	Number of level 1 events

2.1.4 Events

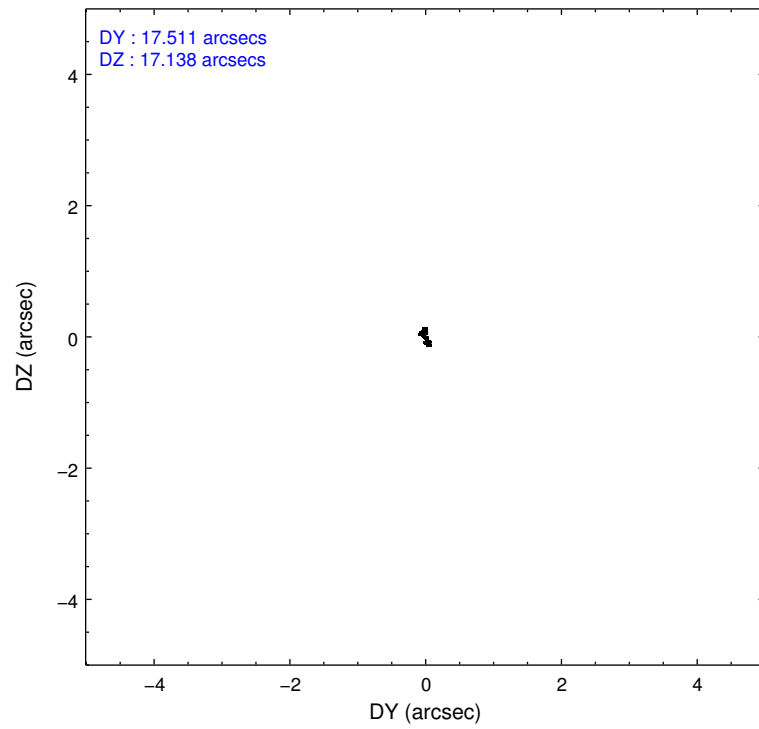
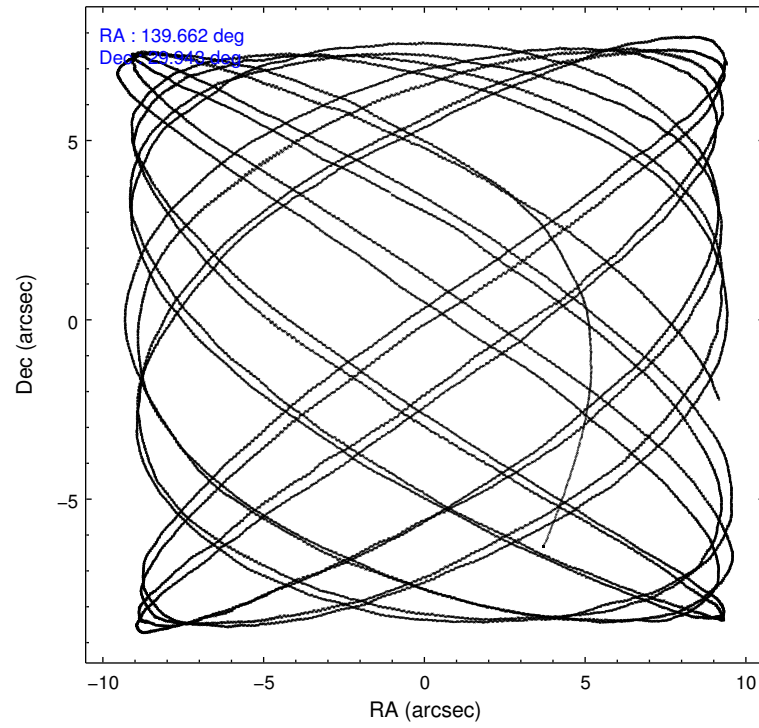
	ccd 0	ccd 1	ccd 2	ccd 3	ccd 6
level 1 events	65621	68567	69752	69599	72599
rejected events	57964	59959	61925	61991	61635
rejected %	88%	87%	88%	89%	84%

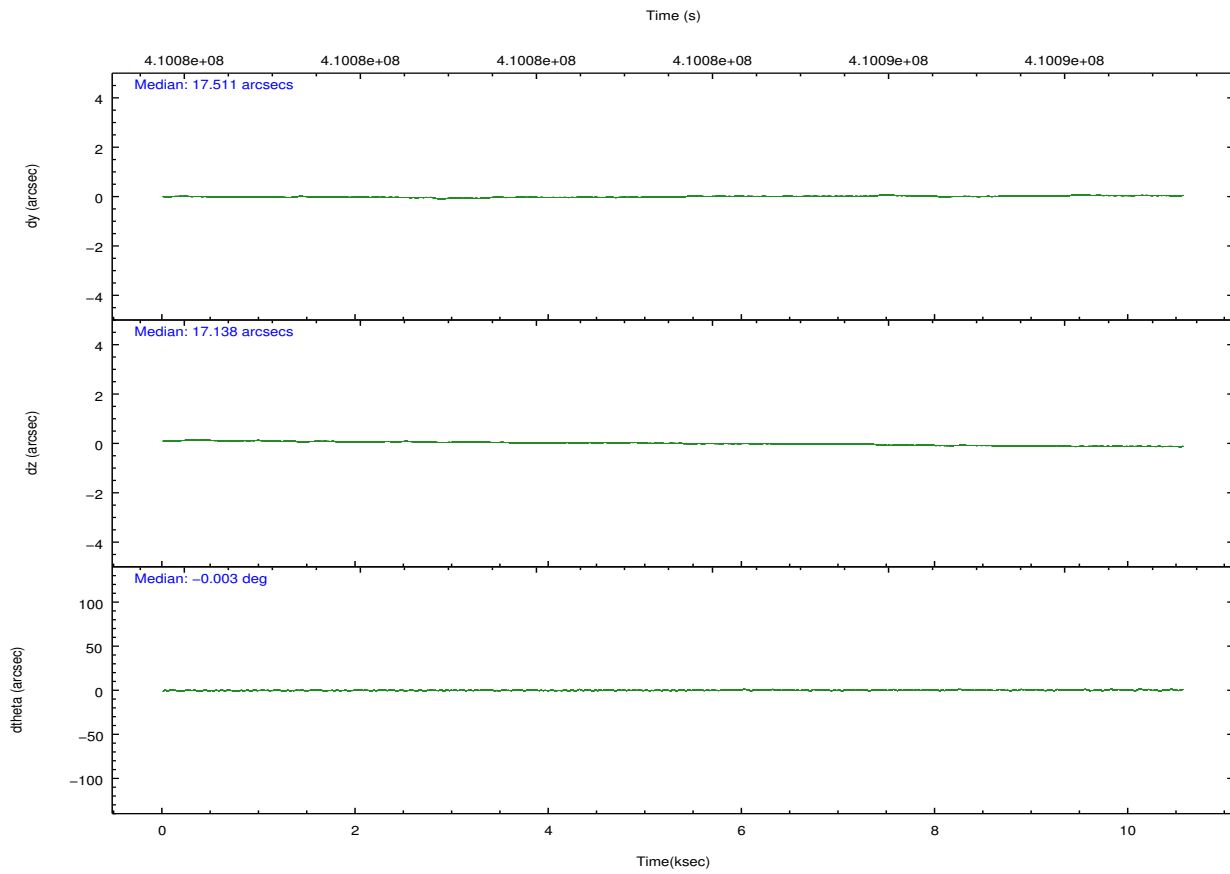
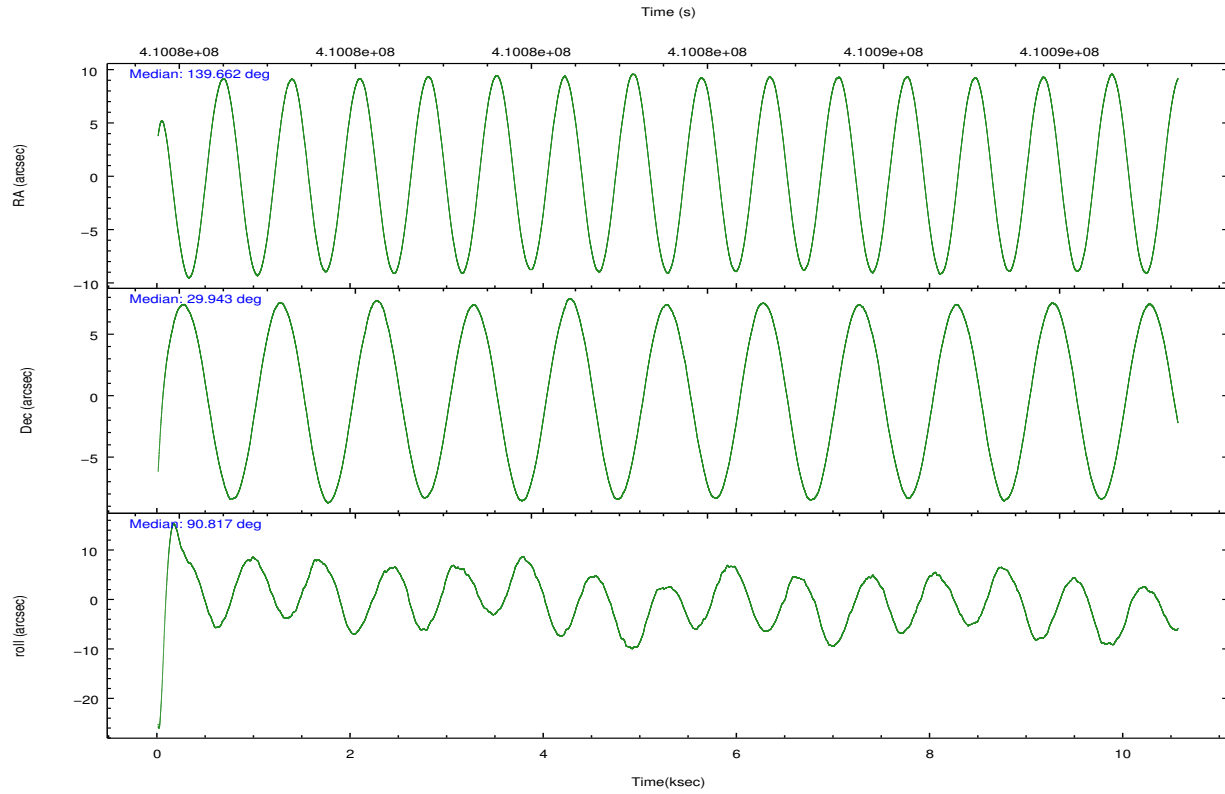
	ccd 0	ccd 1	ccd 2	ccd 3	ccd 6
grade 0 events	2709	3062	2909	2779	5718
	4%	4%	4%	3%	7%
grade 1 events	36	45	44	35	43
	0%	0%	0%	0%	0%
grade 2 events	1855	2057	1852	1688	1789
	2%	2%	2%	2%	2%
grade 3 events	830	872	821	816	820
	1%	1%	1%	1%	1%
grade 4 events	750	847	791	847	858
	1%	1%	1%	1%	1%
grade 5 events	3016	3277	2801	3414	3208
	4%	4%	4%	4%	4%
grade 6 events	1522	1777	1458	1483	1787
	2%	2%	2%	2%	2%
grade 7 events	54903	56630	59076	58537	58376
	83%	82%	84%	84%	80%

2.2 Compared Parameters

Parameter	Planned	Actual	Parameter	Planned	Actual
Instrument	ACIS	ACIS	Obspar format version number	7	7
Detector	ACIS-01236	ACIS-01236	Obspar file type	PREDICTED	ACTUAL
Grating	NONE	NONE	Obspar update status	NONE	UPDATED
Data mode	VFAINT	VFAINT	CCD I0 on	Y	Y
Observation mode	POINTING	POINTING	CCD I1 on	Y	Y
[deg] Pointing RA	139.678698	139.6622988569946	CCD I2 on	Y	Y
[deg] Pointing Dec	29.919835	29.94344868041838	CCD I3 on	Y	Y
[deg] Pointing Roll	90.599630	90.81645161411259	CCD S0 on	N	N
[mm] SIM focus pos	-0.782348	-0.7809083437167272	CCD S1 on	N	N
[mm] SIM defocus	0	0.001439871863259334	CCD S2 on	O1	Y
[mm] SIM translation stage pos	-225.840463	-225.8433433320239	CCD S3 on	N	N
[mm] SIM translation stage offset	-7.752	-7.749109670905796	CCD S4 on	N	N
[s] Observation start time (MET)	410078843.184000	410077667.88986	CCD S5 on	N	N
Observation start date	2010-12-30T06:46:17	2010-12-30T06:27:47	Number of optional ACIS chips dropped	0	0
[s] Observation end time (MET)	410088843.184000	410088977.74044	On-chip summing requested	N	N
Observation end date	2010-12-30T09:32:57	2010-12-30T09:36:17	Subarray requested	NONE	NONE
Read mode	TIMED	TIMED	Alternating exposures requested	N	N
			[s] Primary exposure time	0.000000	3.1

2.3 Aspect



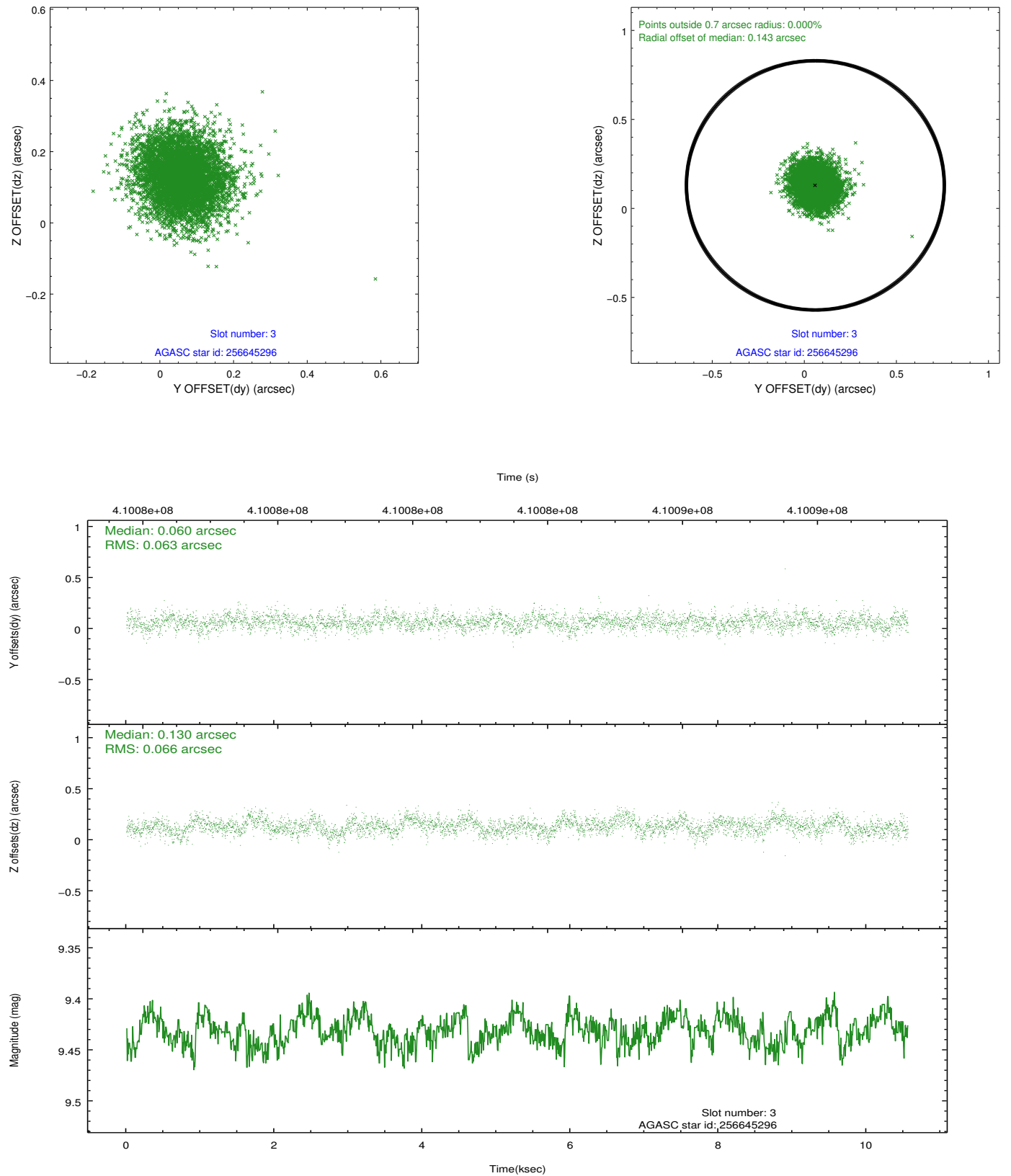


Slot Statistics

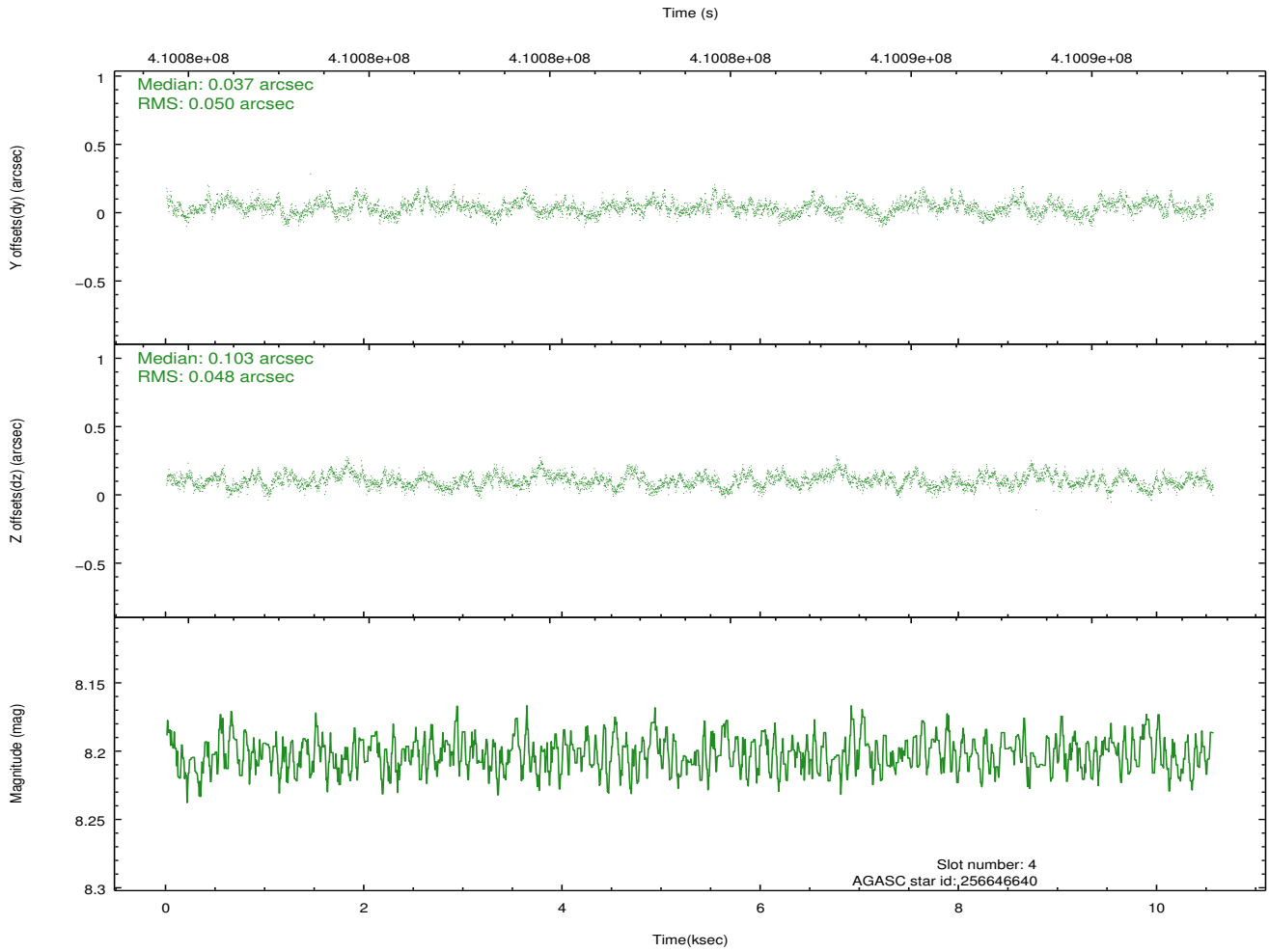
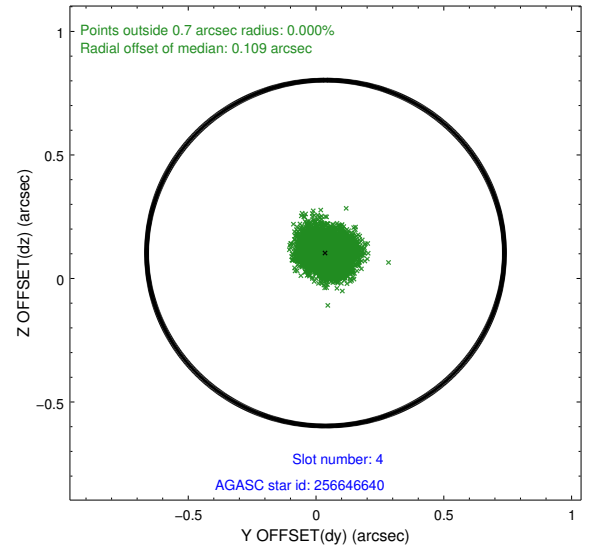
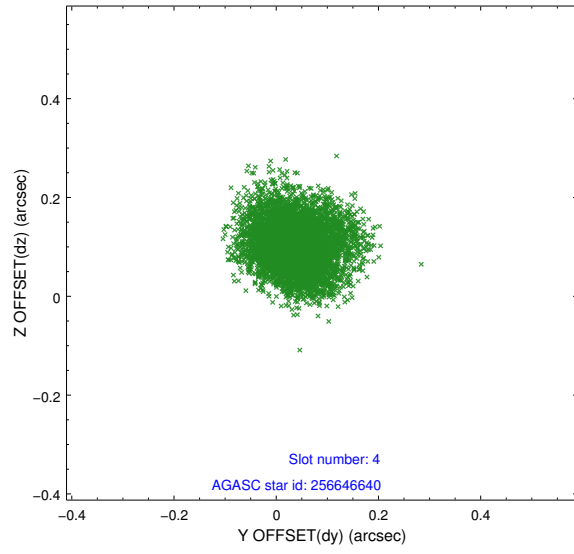
slot	status	id	mag	n_pts	med_dy	med_dz	dr1	dr2	ra	dec	mean_y	mean_z
0	FID	ACIS-I-1	7.03	2576	0.146	-0.095	0.006	0.010	0.000000	0.000000	921.90	-999.95
1	FID	ACIS-I-5	7.02	2576	-0.265	0.130	0.006	0.010	0.000000	0.000000	-1826.37	897.42
2	FID	ACIS-I-6	7.04	2576	0.028	0.037	0.007	0.011	0.000000	0.000000	386.76	1542.42
3	GUIDE	256645296	9.43	5147	0.060	0.130	0.097	0.157	139.853345	29.315976	-2179.03	-525.35
4	GUIDE	256646640	8.20	5149	0.037	0.103	0.074	0.120	139.706384	29.820517	-359.32	-81.65
5	GUIDE	326771040	9.78	5127	-0.156	0.193	0.147	0.240	139.718646	30.528838	2190.37	-146.80
6	GUIDE	326772968	8.61	5152	-0.138	-0.250	0.079	0.129	139.254366	30.374631	1653.73	1300.43
7	GUIDE	256645808	9.17	5147	0.195	-0.184	0.094	0.151	139.646005	29.740726	-643.89	109.54

2.4 Star Slots

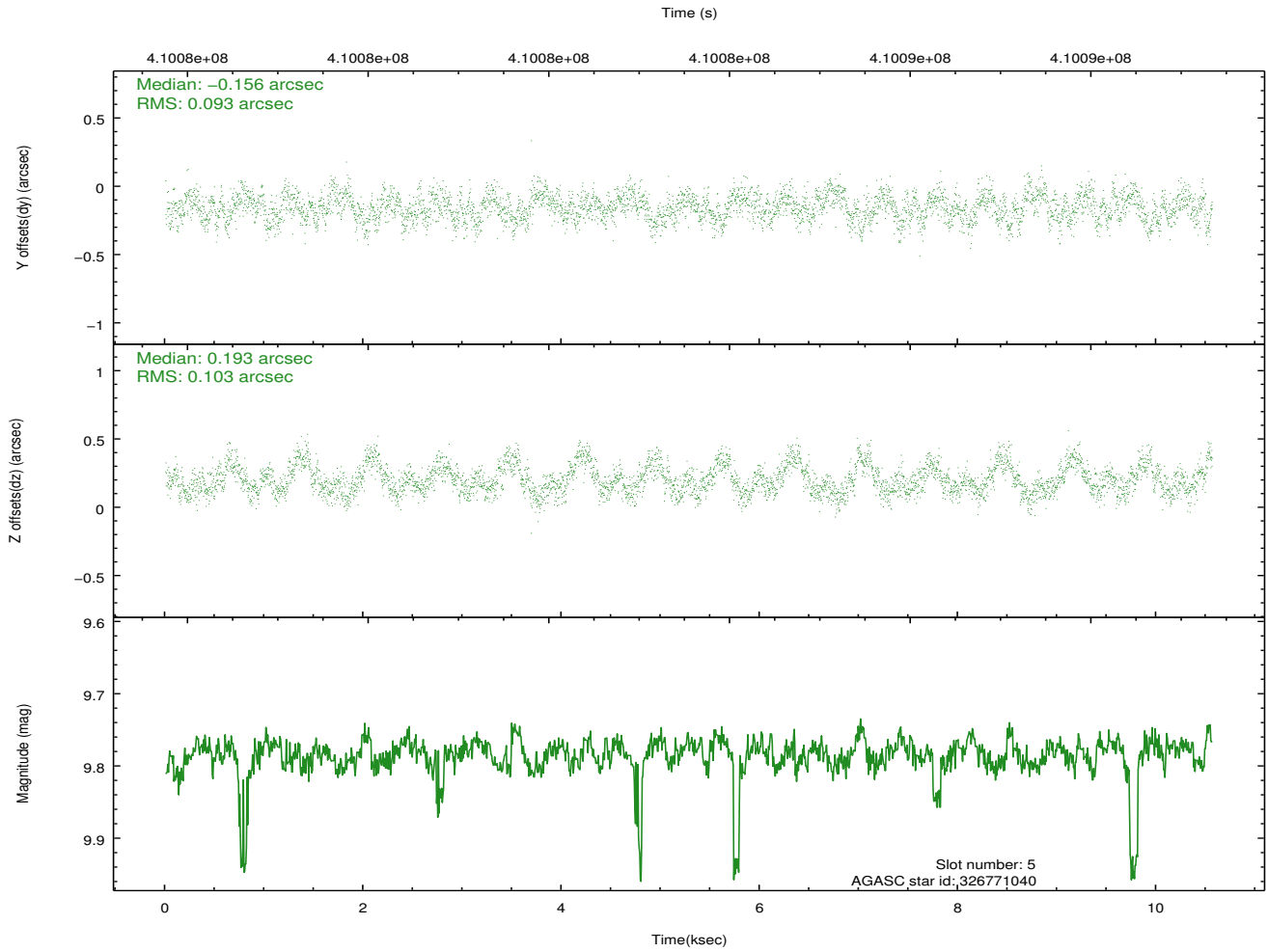
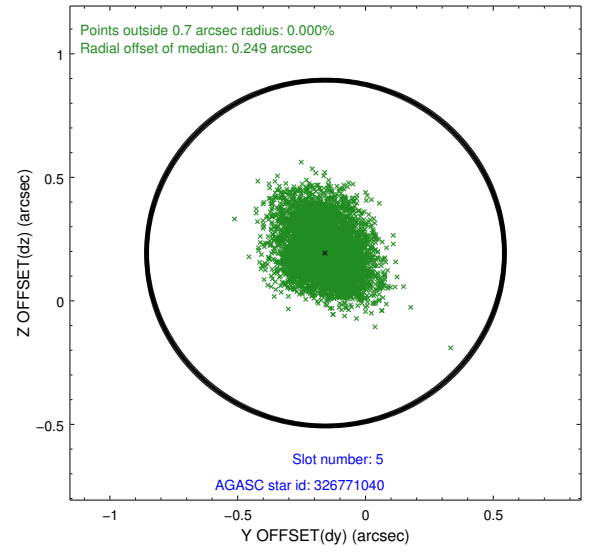
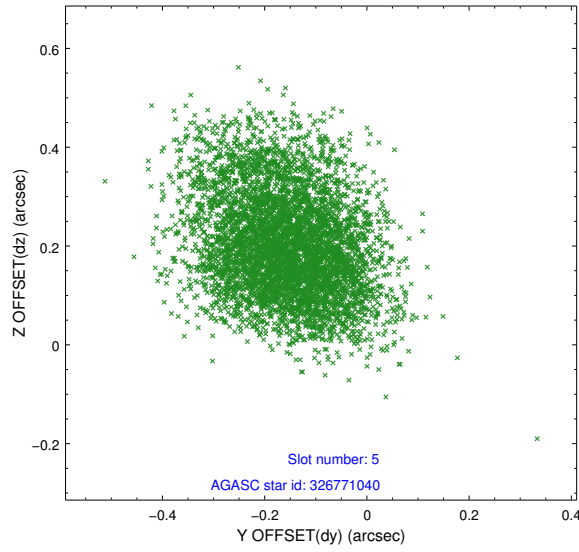
2.4.1 Slot 3



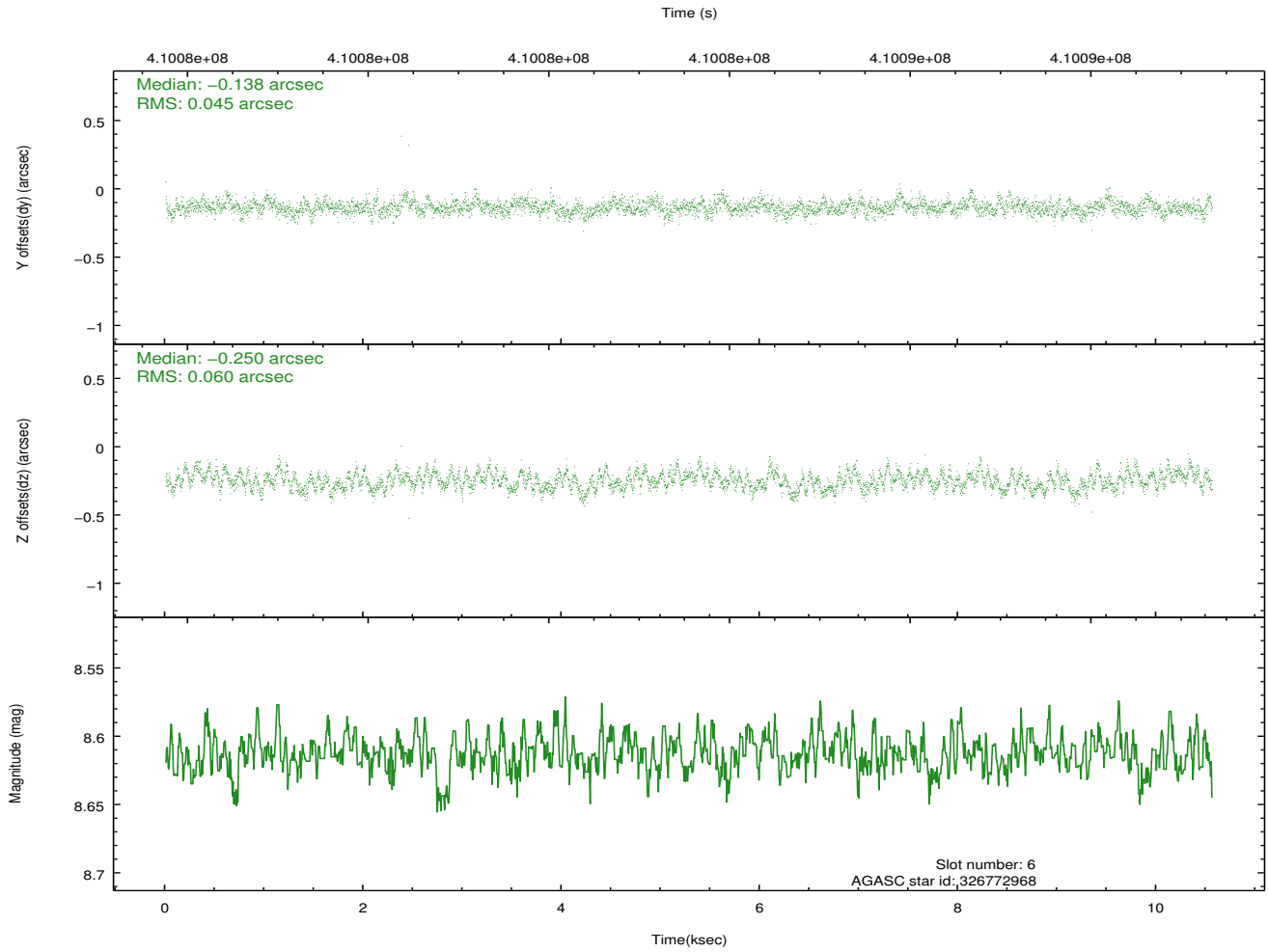
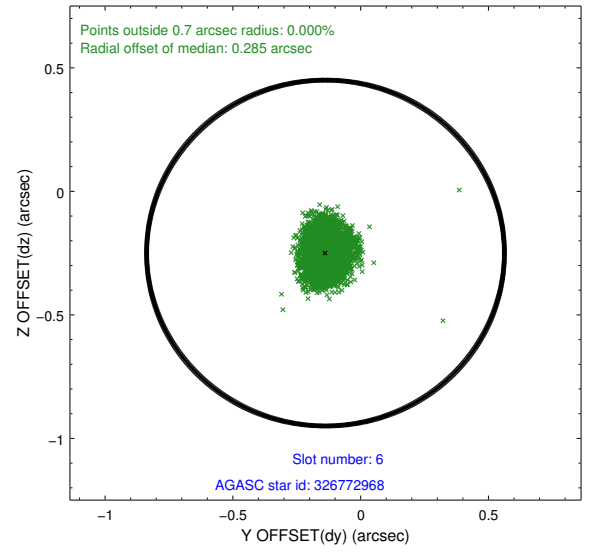
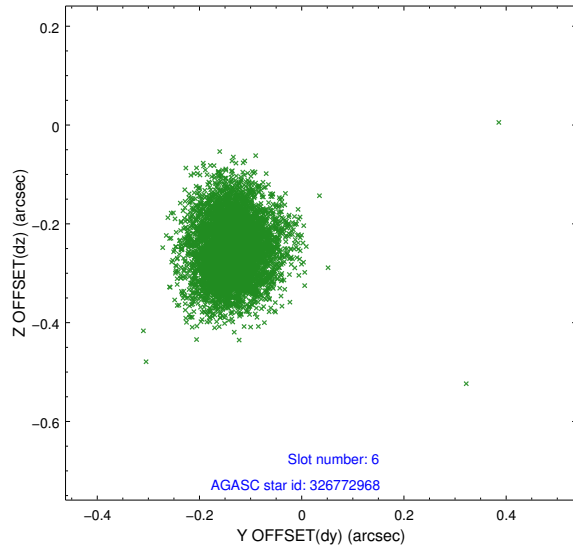
2.4.2 Slot 4



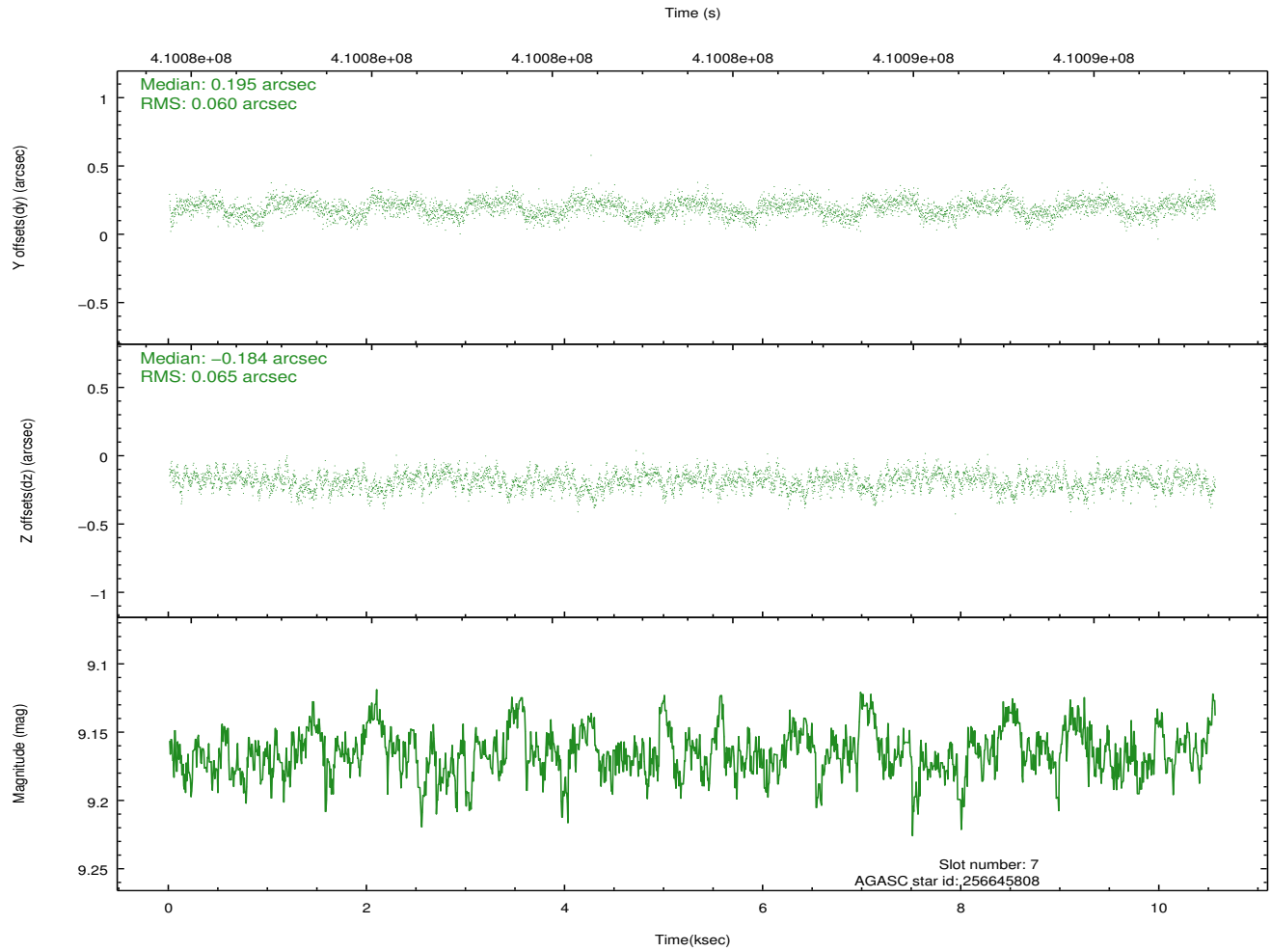
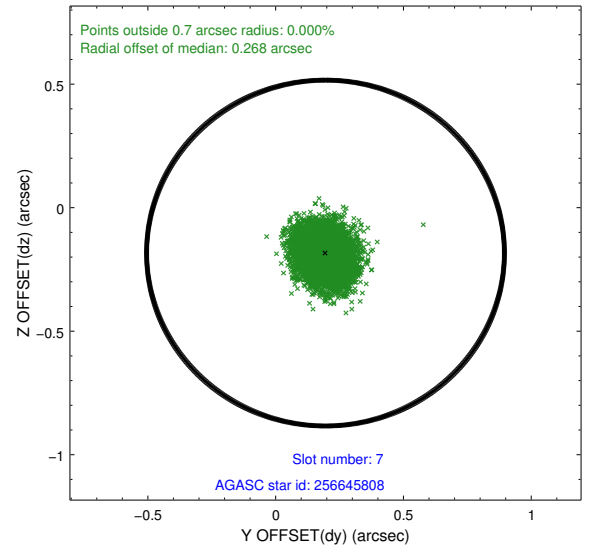
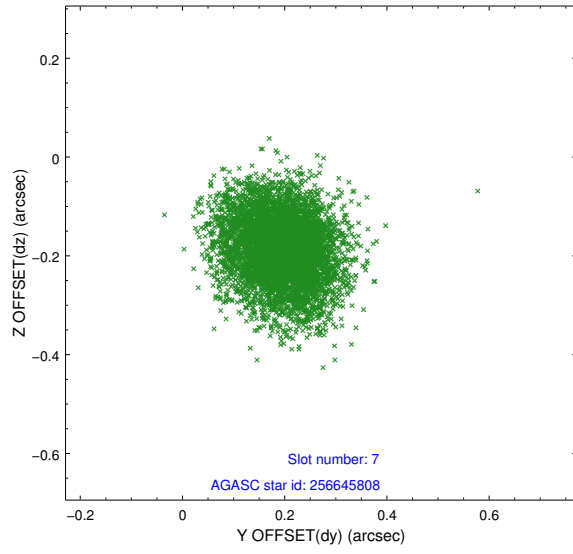
2.4.3 Slot 5



2.4.4 Slot 6

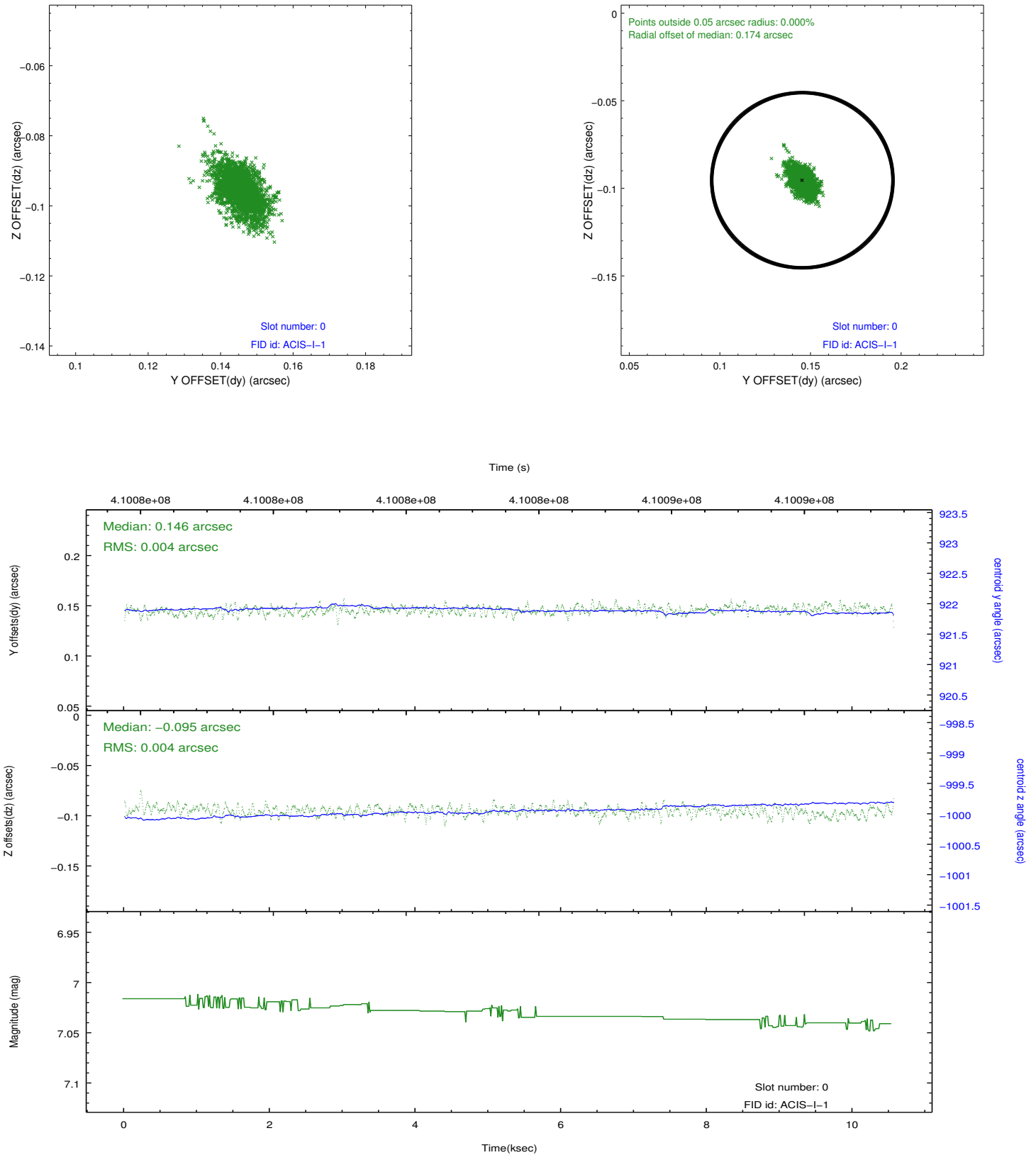


2.4.5 Slot 7

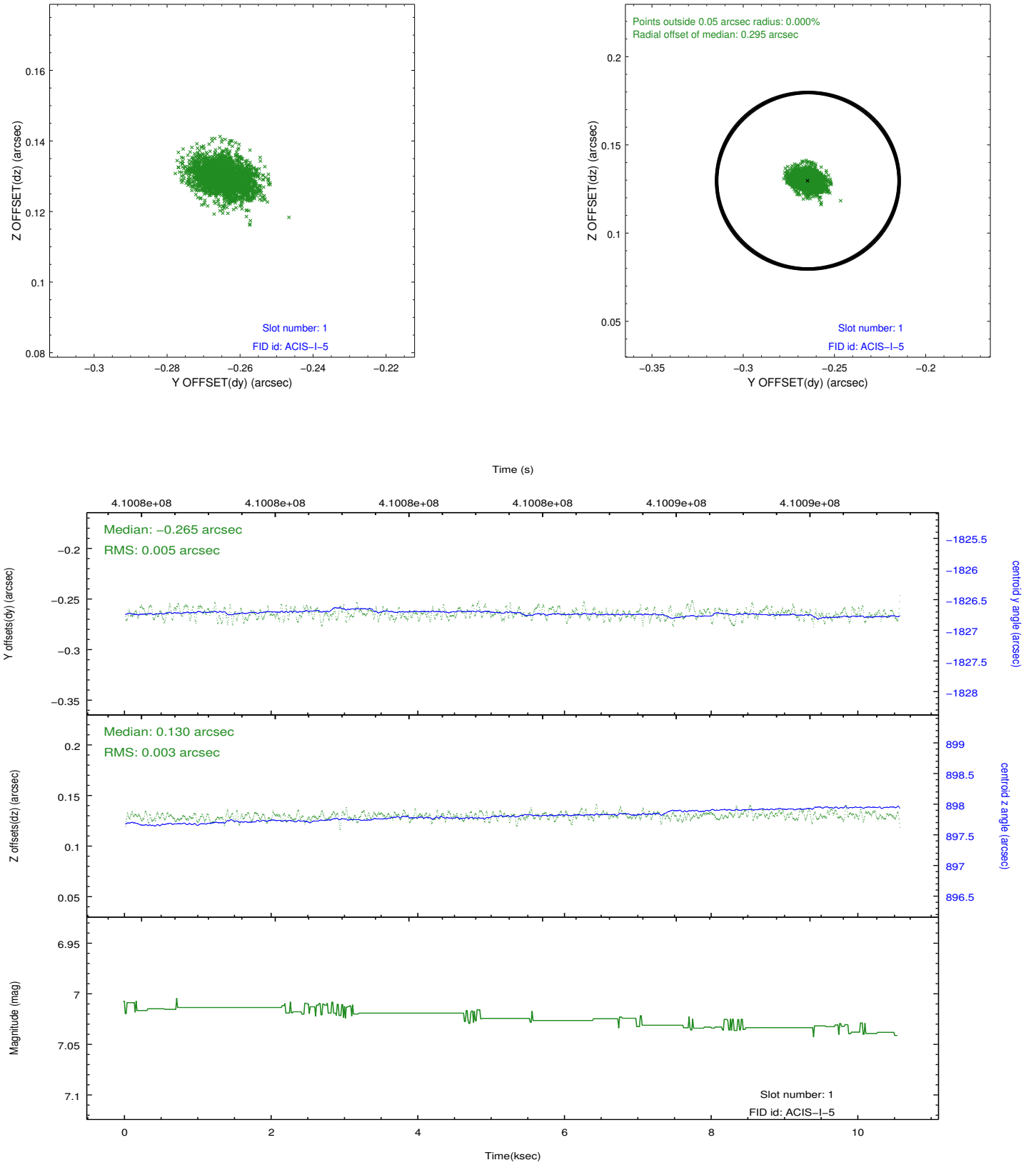


2.5 FID Slots

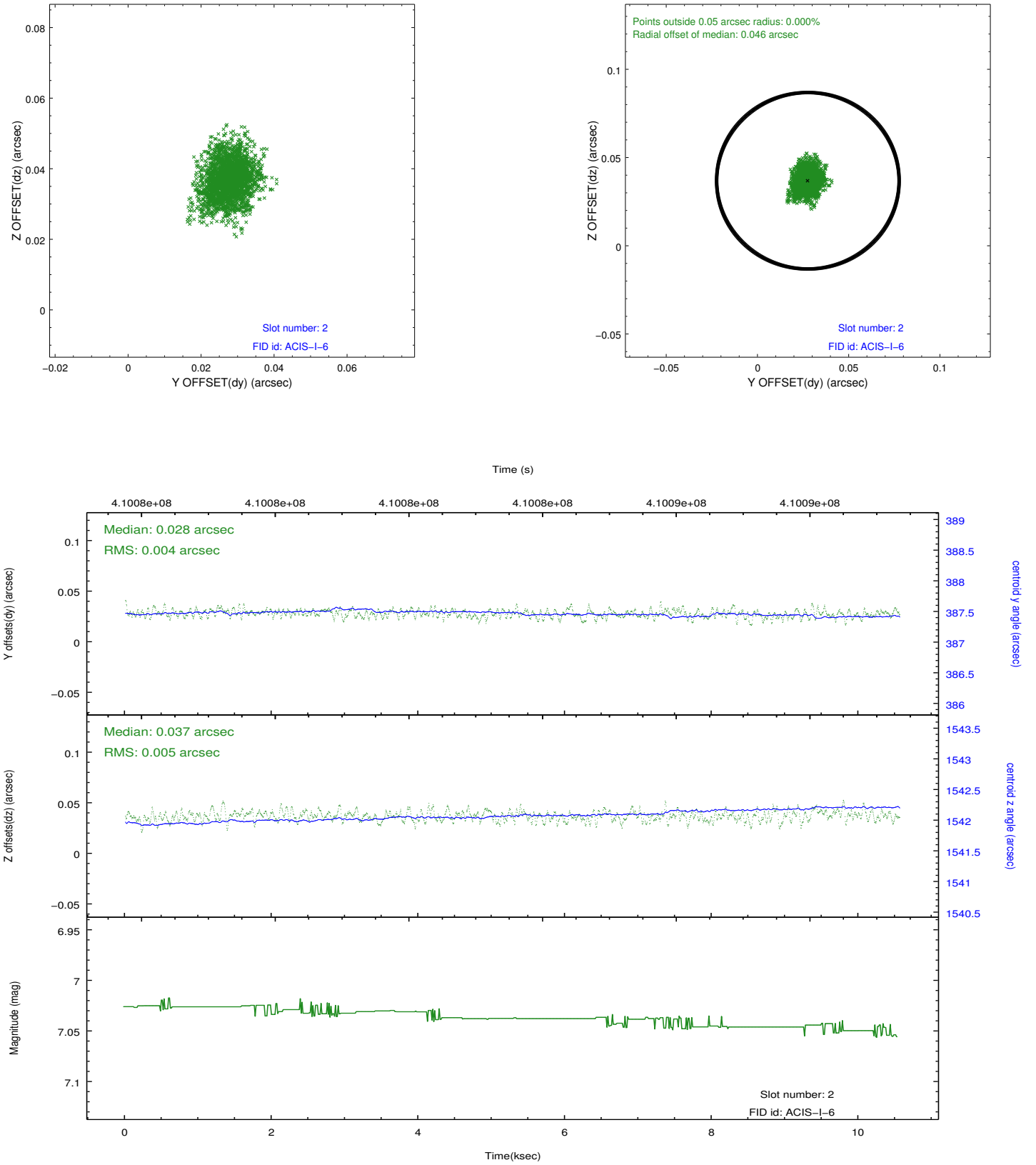
2.5.1 Slot 0



2.5.2 Slot 1



2.5.3 Slot 2



A Summary

A.1 Status

V&V Scientist	Jen Lauer
V&V Date (YYYY-MM-DD)	2012.07.17
V&V Edition	1
V&V Disposition and Status	OK
V&V Charge Time	10.052840268672

A.2 Comments

Node 2 on CCD 0 has a slightly enhanced feature that is about 4 columns wide. The elevated adu values in this feature are only about 2 adu higher than the median adu value of that node. We do not repair bias maps with 'exacto-knife' features less than 5 adu elevated from the mean of that particular node. Therefore, no correction had been made to the bias maps for this obsid. The user can request such a correction if the scientific value is affected.