

# V&V Reference Report

## L2 ASCDS Version : 8.4.3

Observation 12865 - L2 Version 2  
Chandra X-Ray Center

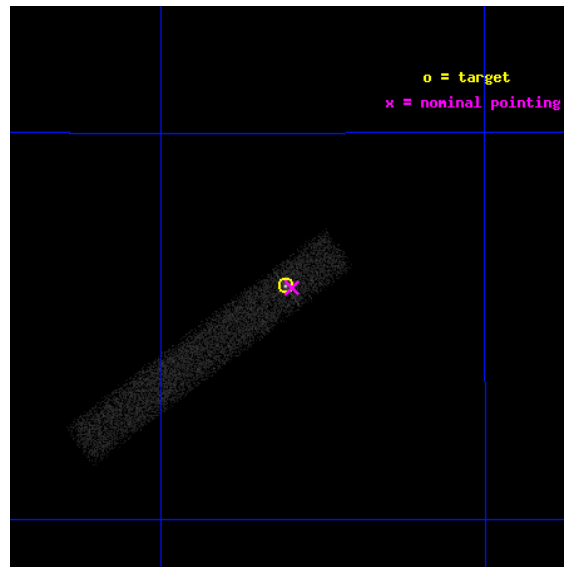
L2 Processing Date : Jan 13 2012

## Contents

<b>1</b>	<b>Front</b>	<b>2</b>
<b>2</b>	<b>OBI</b>	<b>3</b>
2.1	OBI . . . . .	3
2.1.1	Images . . . . .	3
2.1.2	Bias . . . . .	3
2.1.3	Parameters . . . . .	4
2.1.4	Events . . . . .	4
2.2	Compared Parameters . . . . .	5
2.3	Aspect . . . . .	6
2.4	Star Slots . . . . .	9
2.4.1	Slot 3 . . . . .	9
2.4.2	Slot 4 . . . . .	10
2.4.3	Slot 5 . . . . .	11
2.4.4	Slot 6 . . . . .	12
2.5	FID Slots . . . . .	13
2.5.1	Slot 0 . . . . .	13
2.5.2	Slot 1 . . . . .	14
2.5.3	Slot 2 . . . . .	15
<b>A</b>	<b>Summary</b>	<b>16</b>
A.1	Status . . . . .	16
A.2	Comments . . . . .	16

# 1 Front

seq_num	702498	Sequence number
obs_id	12865	Observation id
title	Chandra Survey of Hard X-ray Selected Merging AGN Hosts	Proposal t
observer	Dr. Richard Mushotzky	Principal investigator
object	2MASX J09043699+5536025	Source name
dtcycle	0	&#160
cycle	P	events from which exps? Prim/Second/Both
ra_targ	136.154167	Observer's specified target RA [deg]
dec_targ	55.601	Observer's specified target Dec [deg]
ra_nom	136.14912037556	Nominal RA [deg]
dec_nom	55.599952658486	Nominal Dec [deg]
roll_nom	142.98195530424	Nominal Roll [deg]
revision	2	Processing version of data
ontime	20009.198807359	Sum of GTIs [s]
livetime	18147.287146163	Livetime [s]
ontime7	20009.198807359	Sum of GTIs [s]
l2events	19897	Number of level 2 events

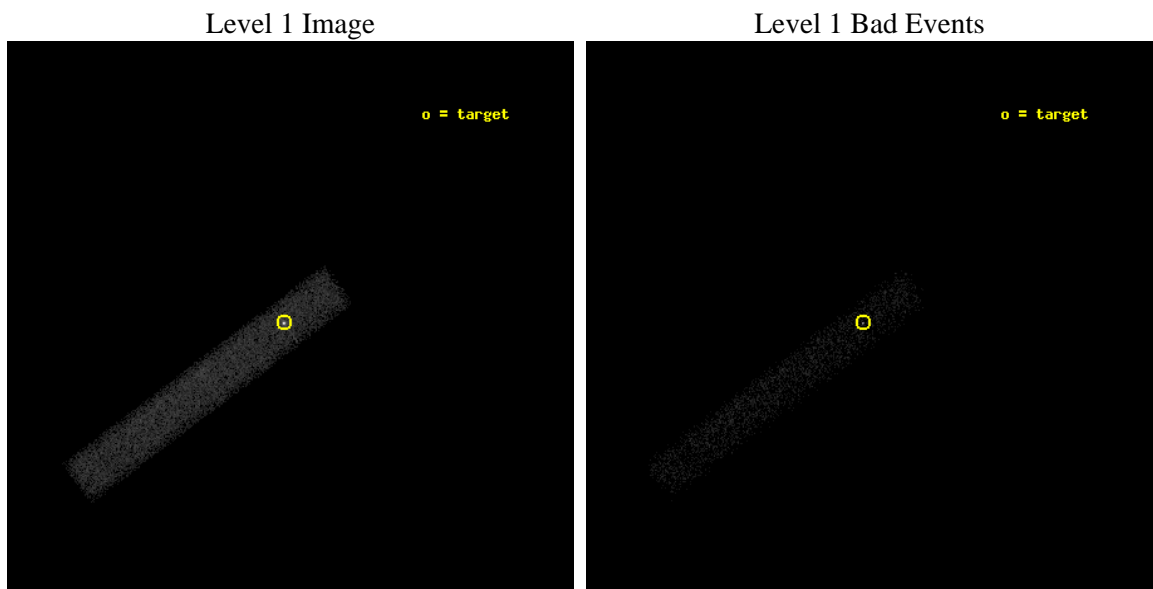




## 2 OBI

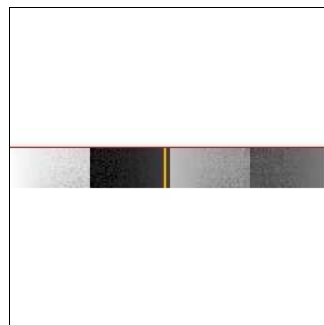
### 2.1 OBI

#### 2.1.1 Images



#### 2.1.2 Bias

Chip 7



### 2.1.3 Parameters

obi_num	0	Obi number	sched_exp_time	20000.000000	[s] Scheduled observation exposure time
ascdsver	8.4.3	Processing system revision	ontime	20009.198807359	Sum of GTIs [s]
caldsver	4.4.7	&#160	ontime7	20009.198807359	Sum of GTIs [s]
date	2012-01-14T01:13:07	Date and time of file creation	l1events	31883	Number of level 1 events
revision	2	Processing version of data			

### 2.1.4 Events

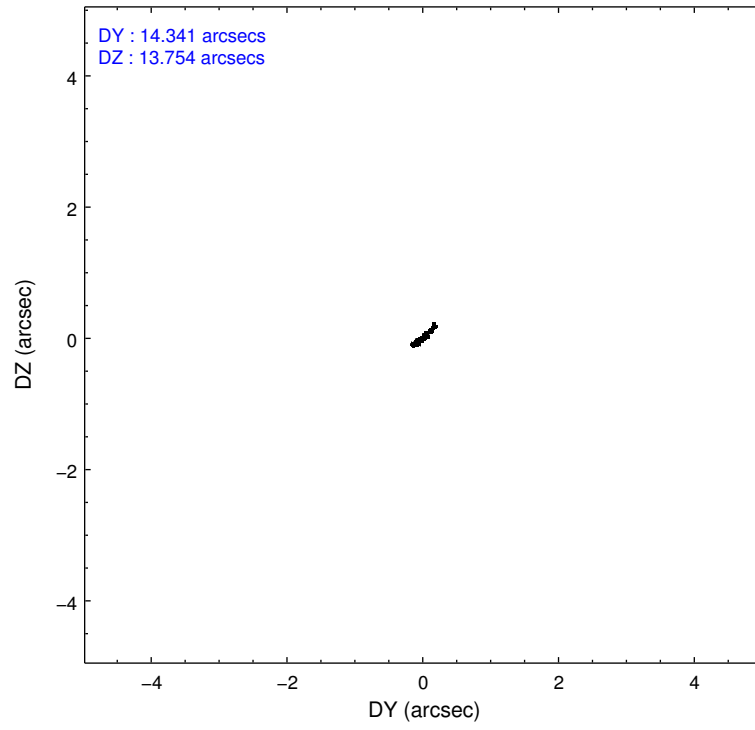
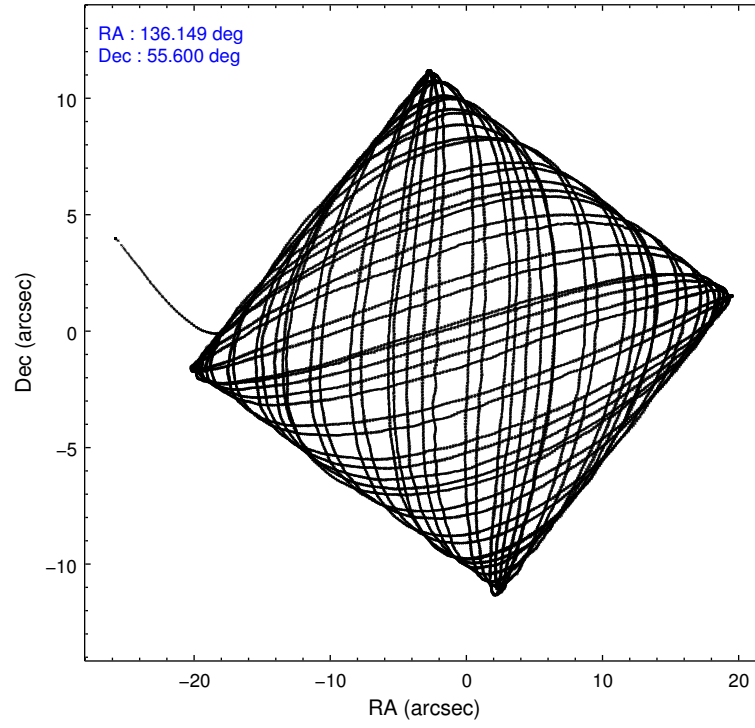
	<b>ccd 7</b>
level 1 events	31883
rejected events	11486
rejected %	36%

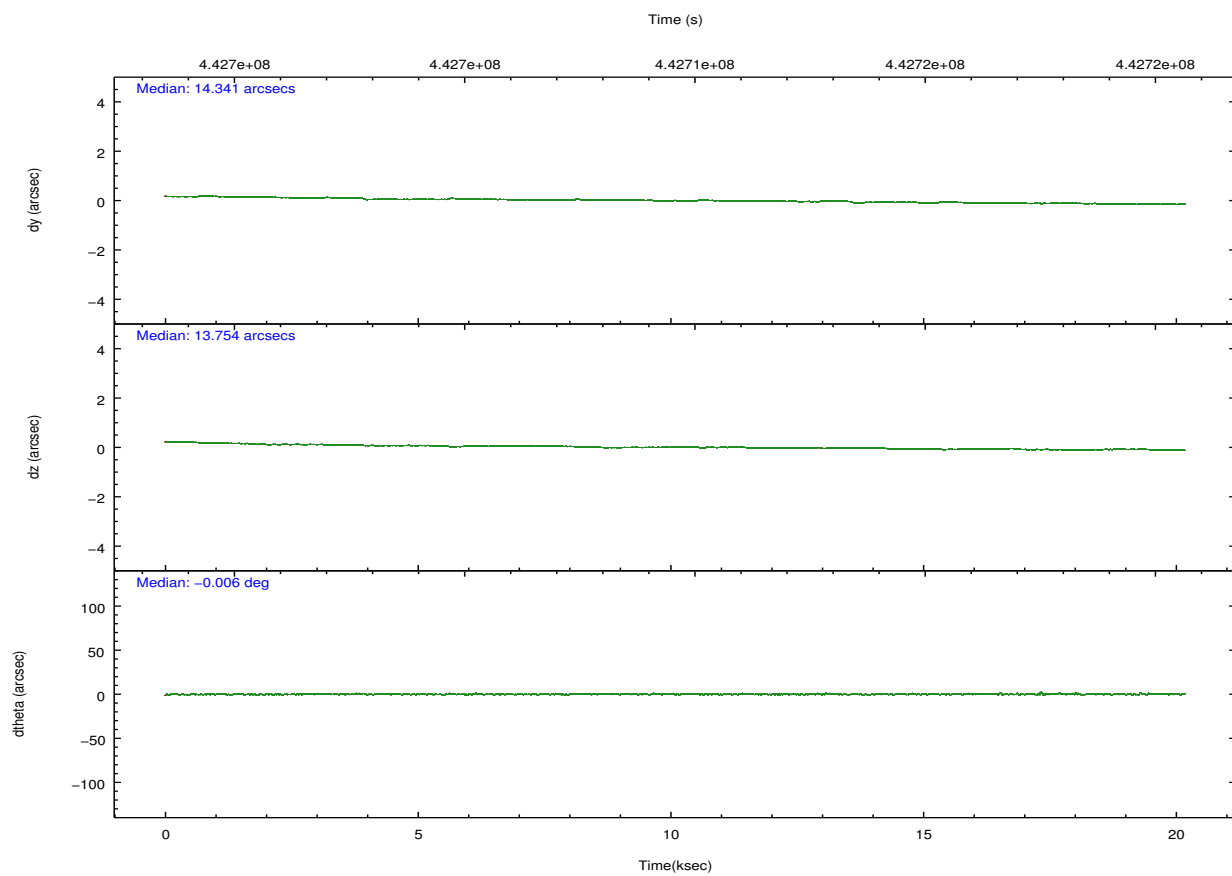
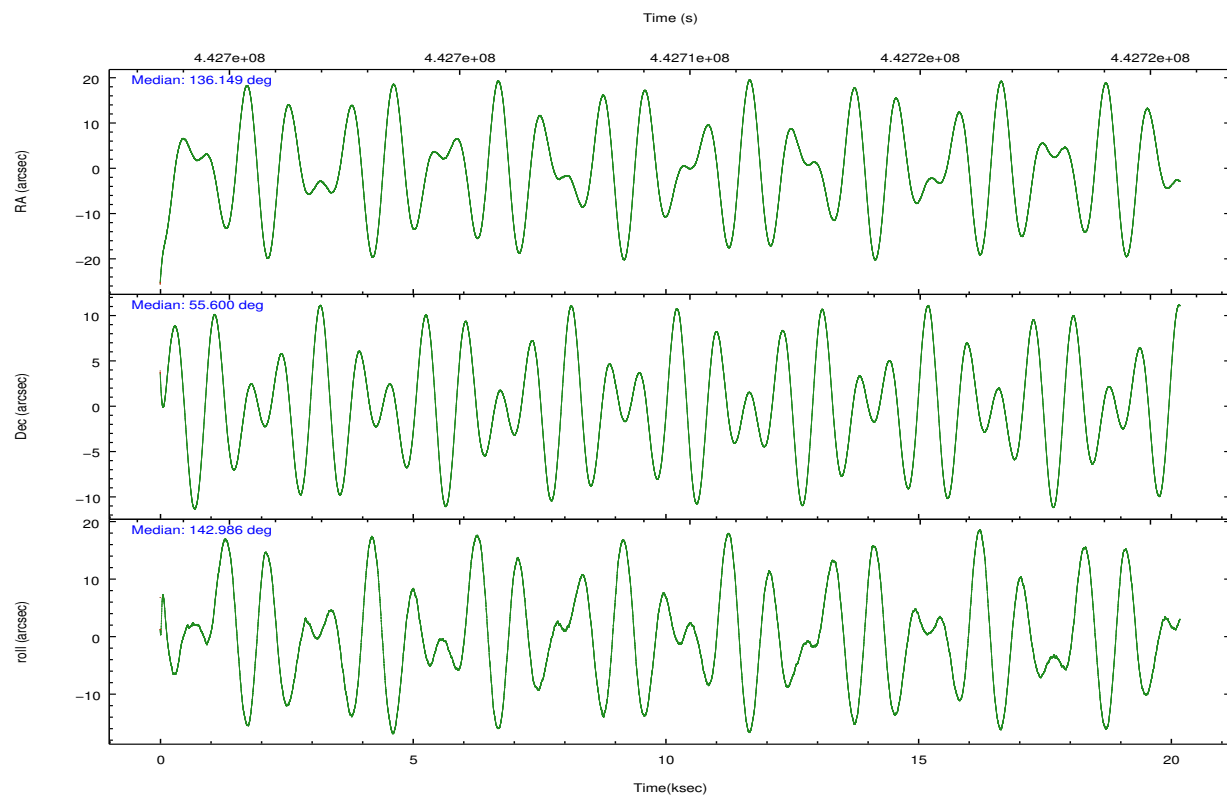
	<b>ccd 7</b>
grade 0 events	3545
	11%
grade 1 events	60
	0%
grade 2 events	4436
	13%
grade 3 events	2598
	8%
grade 4 events	2481
	7%
grade 5 events	2518
	7%
grade 6 events	7337
	23%
grade 7 events	8908
	27%

## 2.2 Compared Parameters

Parameter	Planned	Actual	Parameter	Planned	Actual
Instrument	ACIS	ACIS	Obspar format version number	7	7
Detector	ACIS-7	ACIS-7	Obspar file type	PREDICTED	ACTUAL
Grating	NONE	NONE	Obspar update status	NONE	UPDATED
Data mode	FAINT	FAINT	Number of optional ACIS chips dropped	0	0
Observation mode	POINTING	POINTING	On-chip summing requested	N	N
[deg] Pointing RA	136.197258	136.1491203755648	Subarray requested	CUSTOM	1/8
[deg] Pointing Dec	55.596965	55.59995265848553	Subarray start row	449	449
[deg] Pointing Roll	142.785618	142.9819553042435	Subarray row count	128	128
[mm] SIM focus pos	-0.684267	-0.6828225247311905	Alternating exposures requested	N	N
[mm] SIM defocus	0	0.001444936568705701	[s] Primary exposure time	0.000000	0.4
[mm] SIM translation stage pos	-190.132523	-190.1400660498719			
[mm] SIM translation stage offset	0	0.00754346686406393			
[s] Observation start time (MET)	442699658.184000	442698728.09527			
Observation start date	2012-01-11T20:06:32	2012-01-11T19:52:08			
[s] Observation end time (MET)	442719658.184000	442720710.24643			
Observation end date	2012-01-12T01:39:52	2012-01-12T01:58:30			
Read mode	TIMED	TIMED			

## 2.3 Aspect



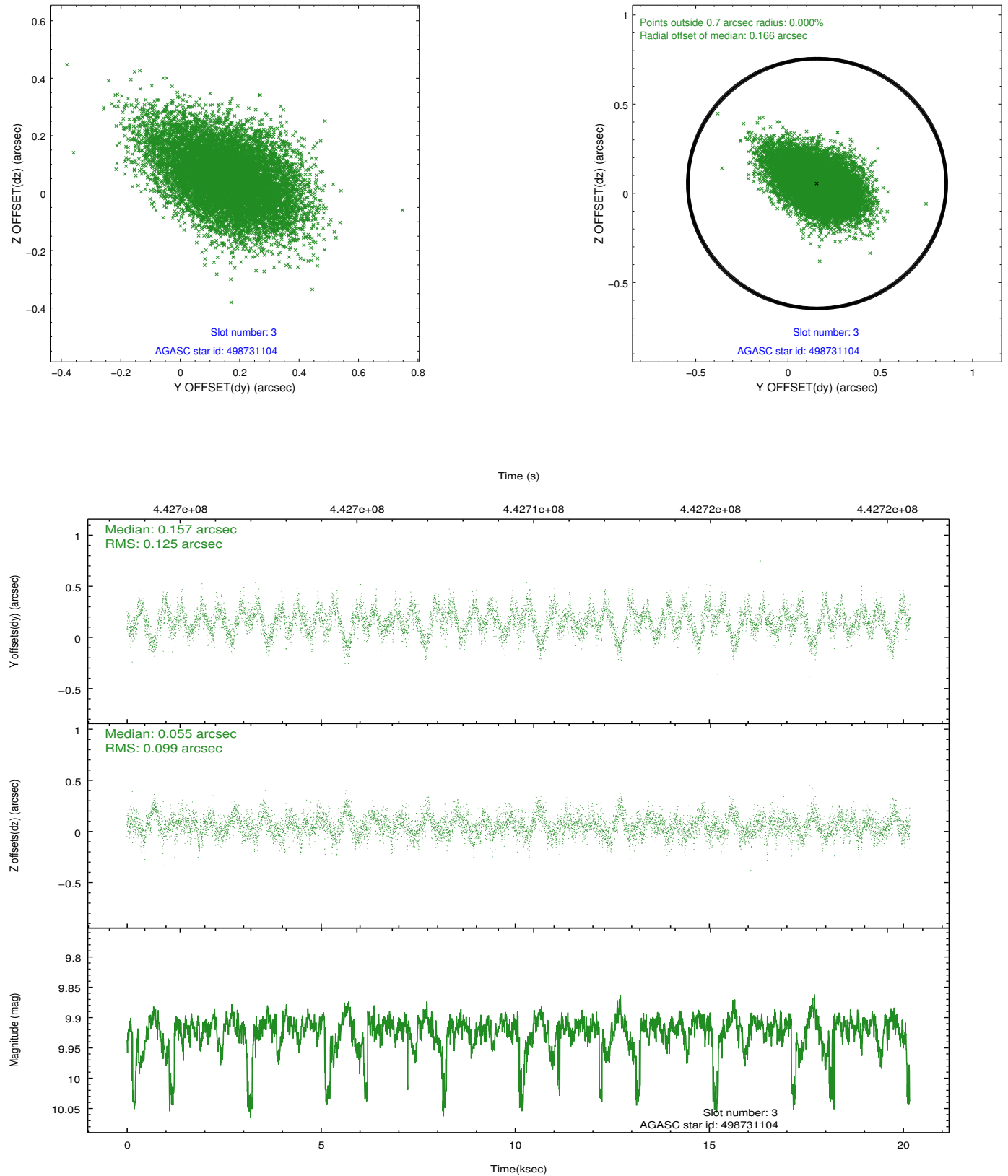


### Slot Statistics

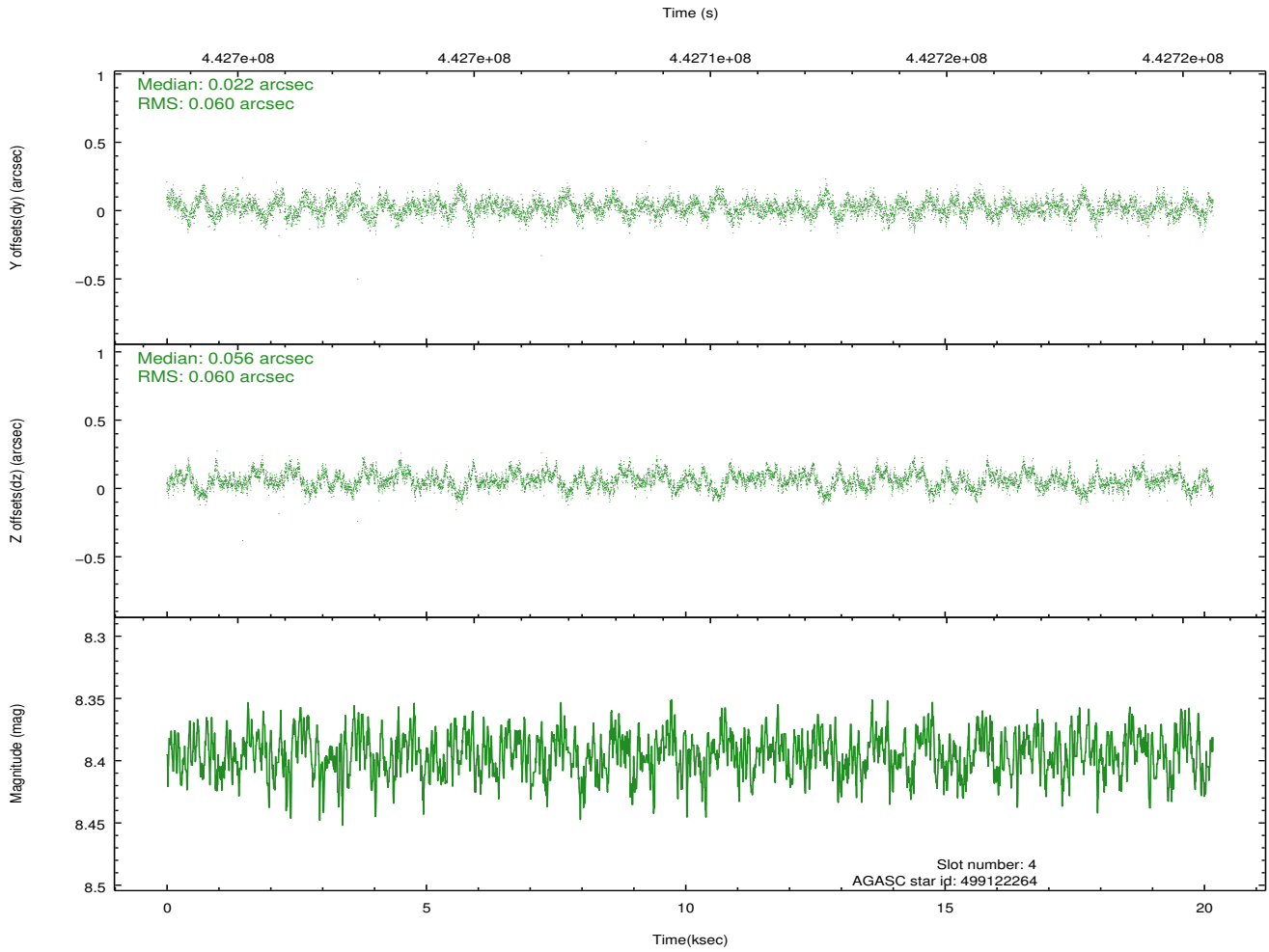
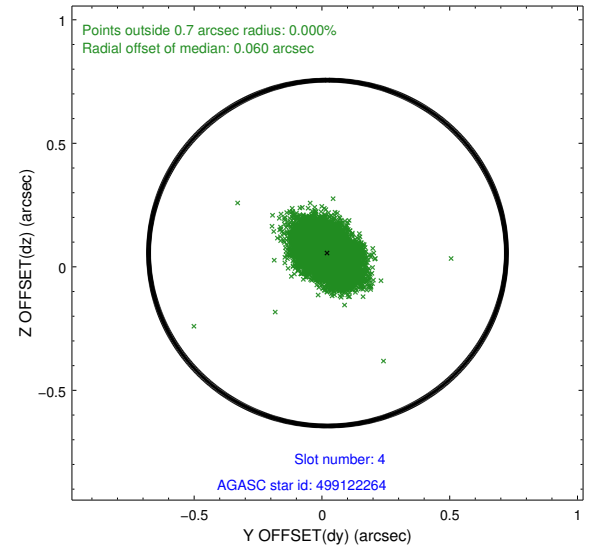
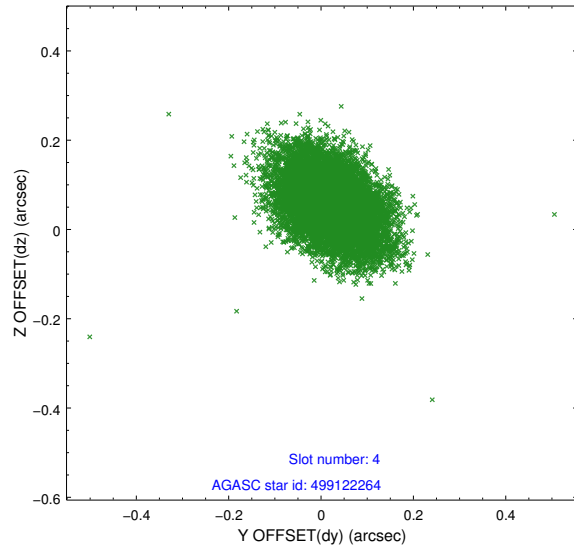
slot	status	id	mag	n_pts	med_dy	med_dz	dr1	dr2	ra	dec	mean_y	mean_z
0	FID	ACIS-S-1	7.07	4922	0.101	-0.047	0.007	0.012	0.000000	0.000000	928.86	-1730.78
1	FID	ACIS-S-5	7.11	4922	-0.183	0.064	0.007	0.012	0.000000	0.000000	-1820.33	166.68
2	FID	ACIS-S-6	7.21	4922	0.061	-0.006	0.008	0.014	0.000000	0.000000	394.16	810.79
3	GUIDE	498731104	9.92	9814	0.157	0.055	0.166	0.283	136.276982	54.776925	-1917.18	2251.12
4	GUIDE	499122264	8.39	9838	0.022	0.056	0.088	0.148	135.297544	55.859947	2026.98	336.22
5	GUIDE	499122616	7.98	9843	0.013	-0.098	0.108	0.165	136.484776	55.389682	-918.73	238.29
6	GUIDE	499123552	9.50	9829	-0.192	-0.009	0.135	0.213	135.626658	55.368383	434.24	1358.24
7	OMITTED		0.00	0	0.000	0.000	0.000	0.000	0.000000	0.000000	0.00	0.00

## 2.4 Star Slots

### 2.4.1 Slot 3

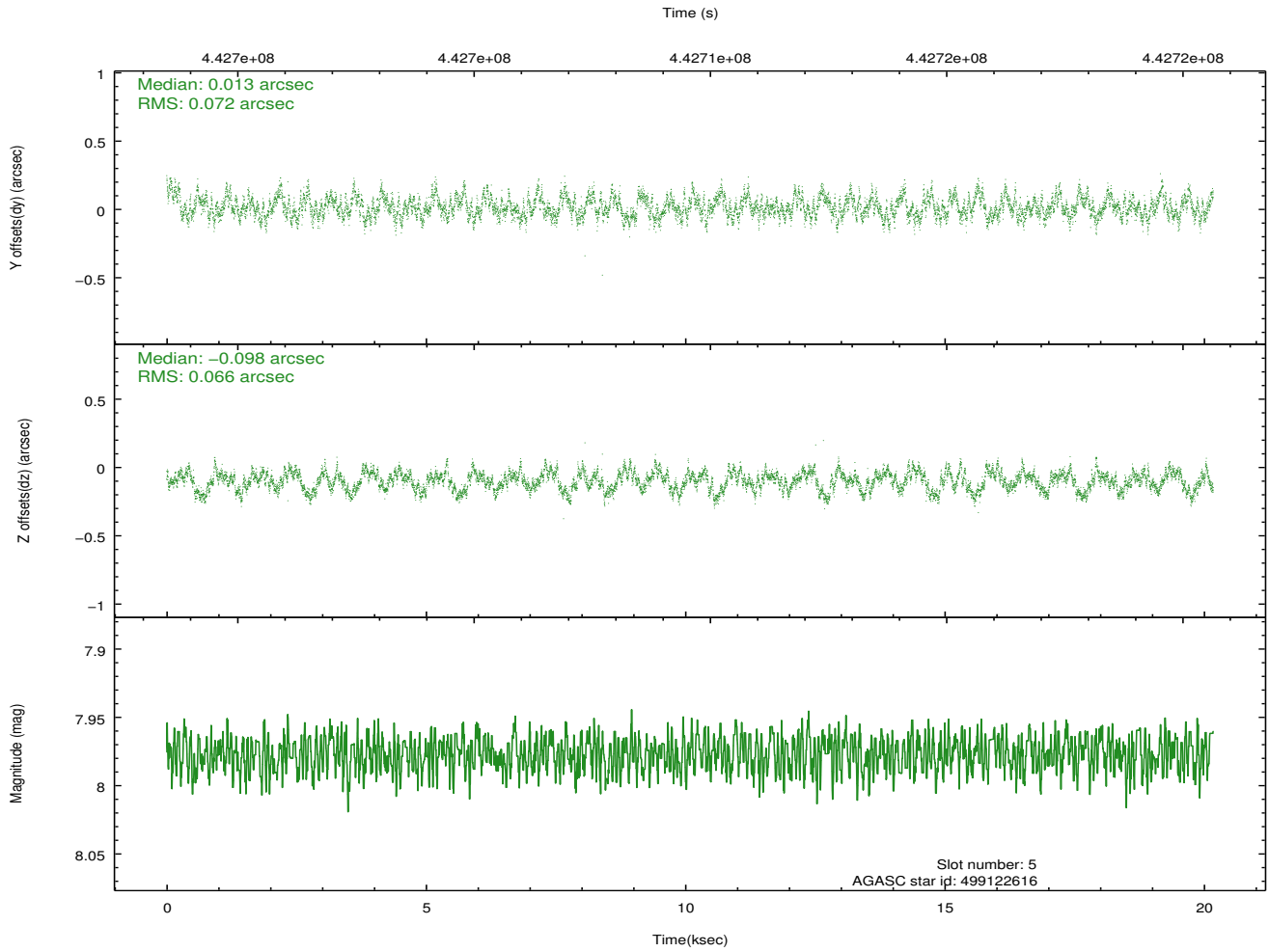
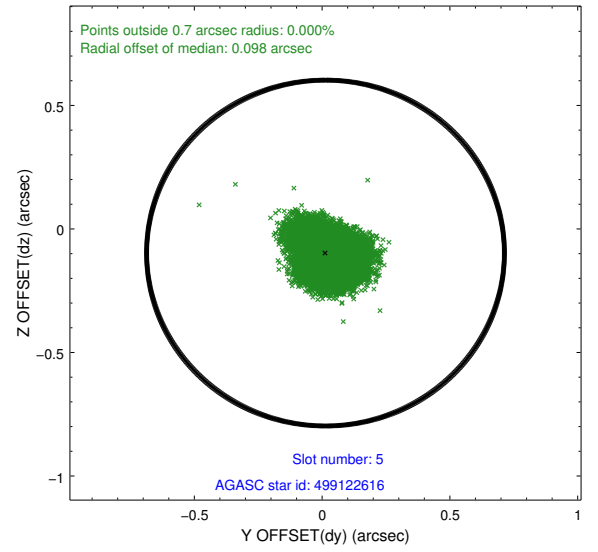
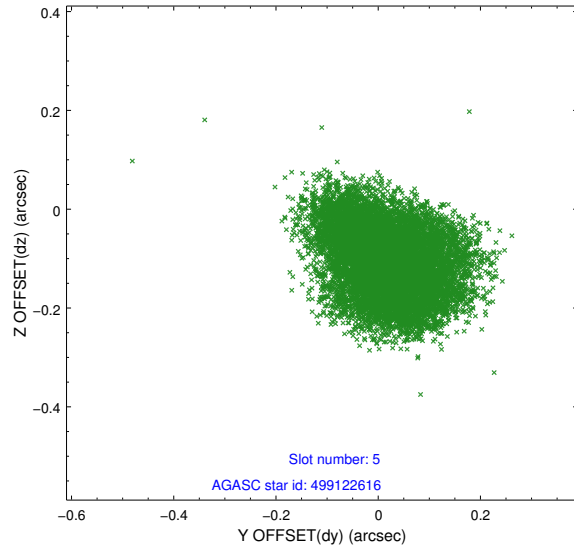


## 2.4.2 Slot 4

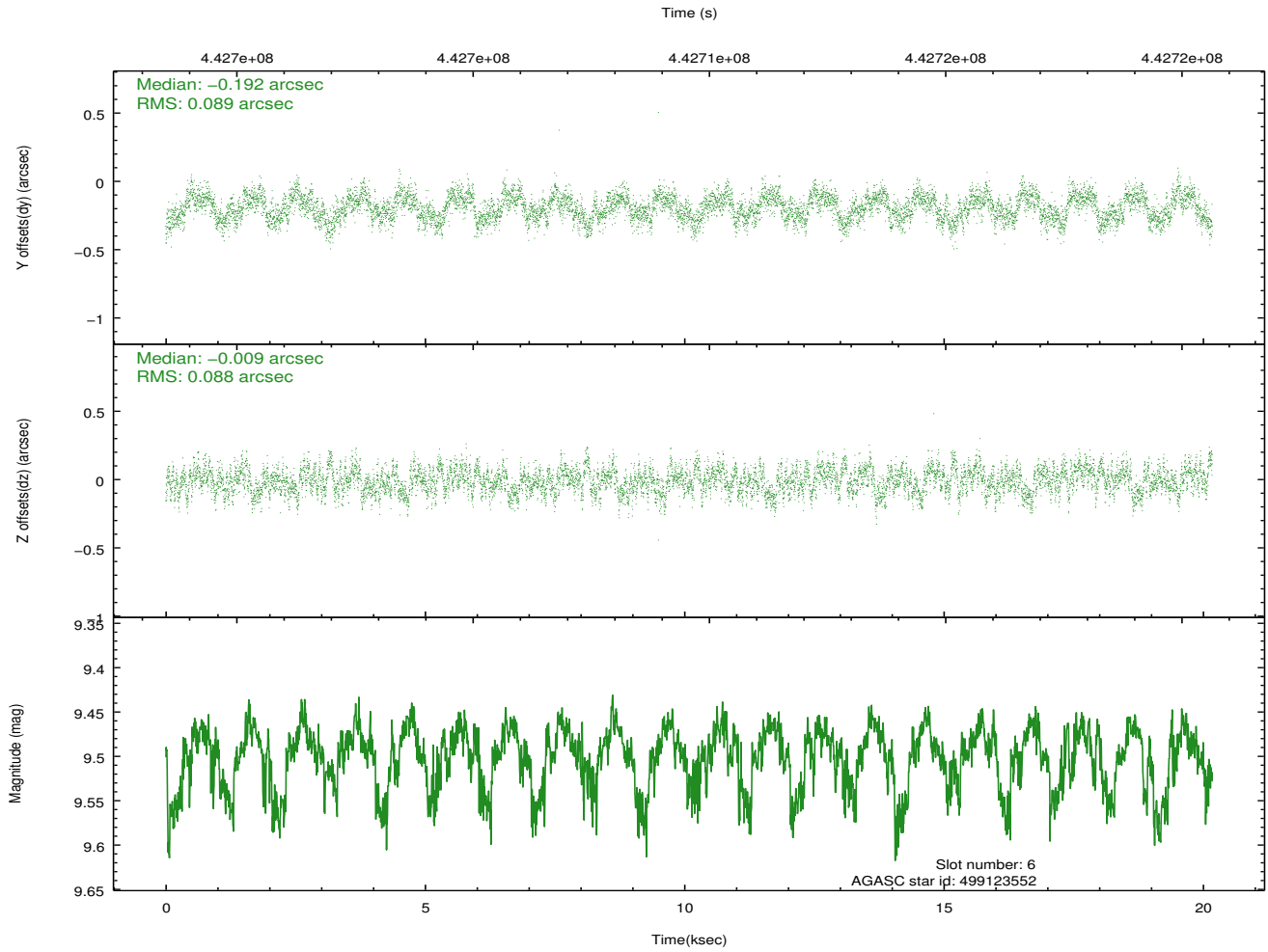
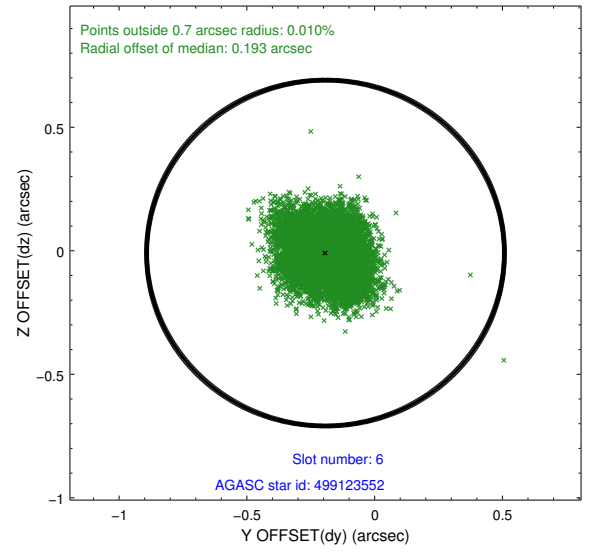
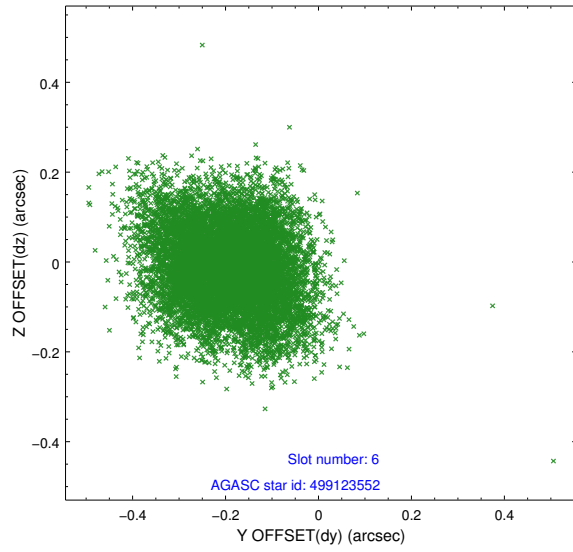




### 2.4.3 Slot 5

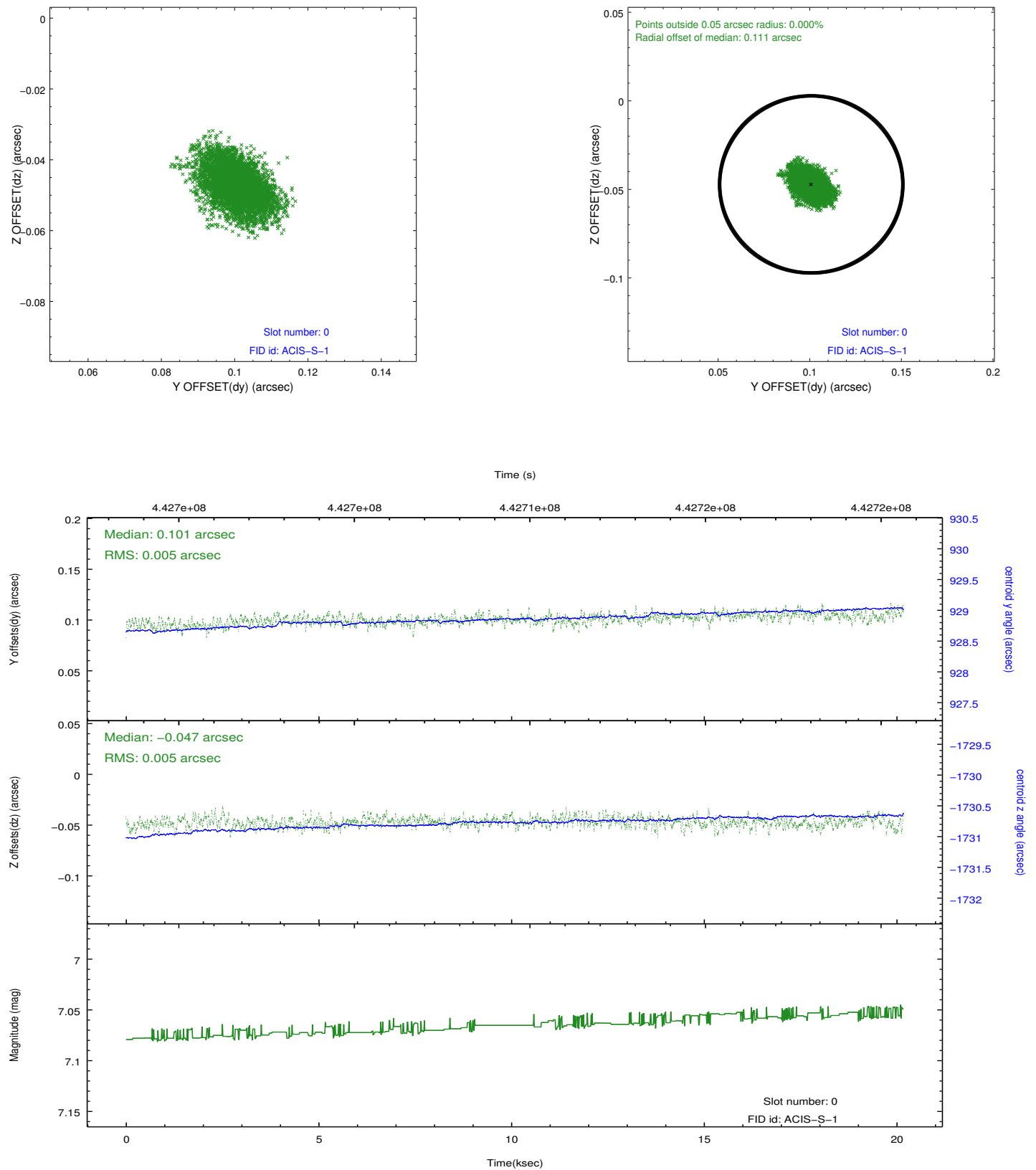


## 2.4.4 Slot 6

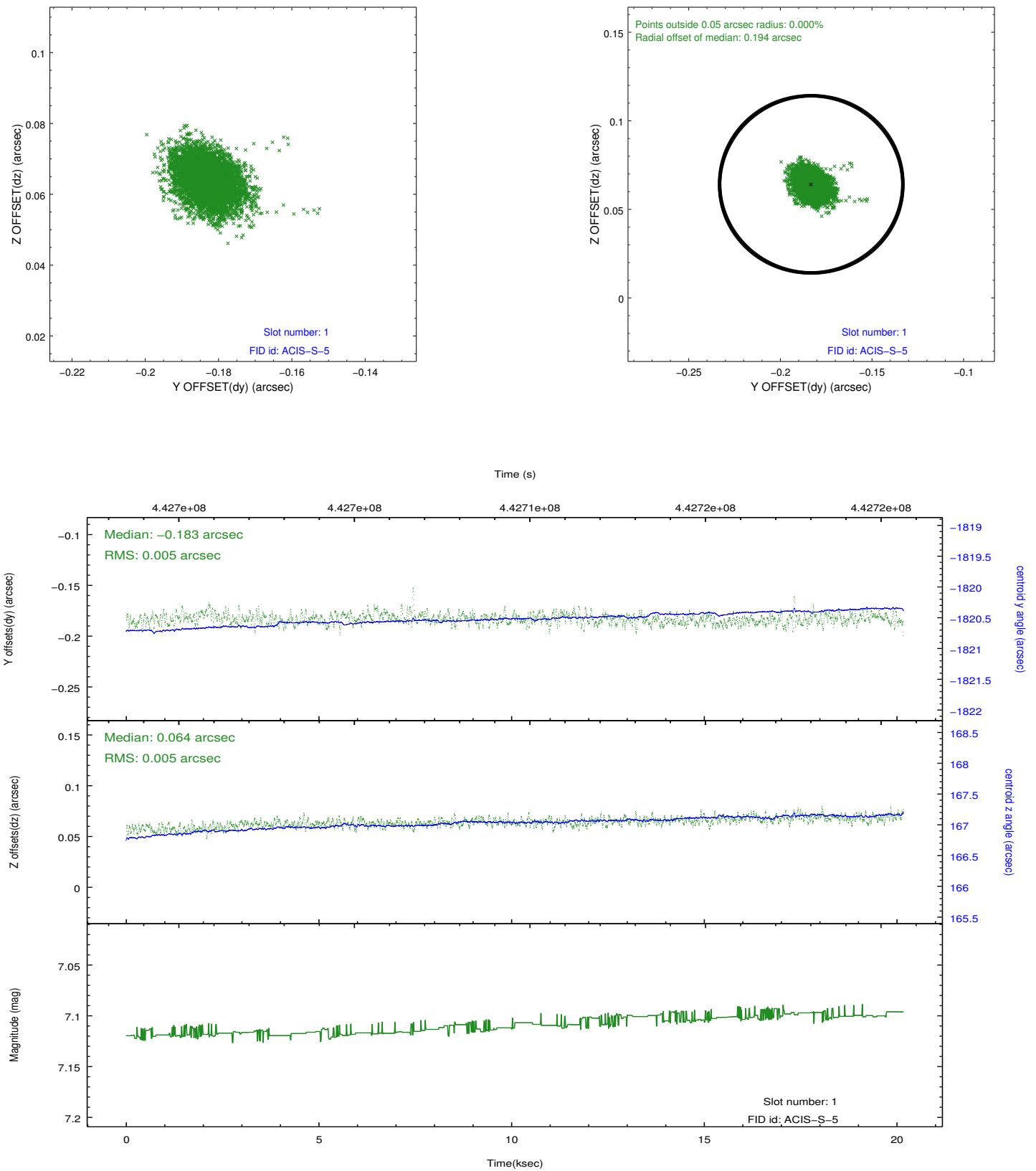


## 2.5 FID Slots

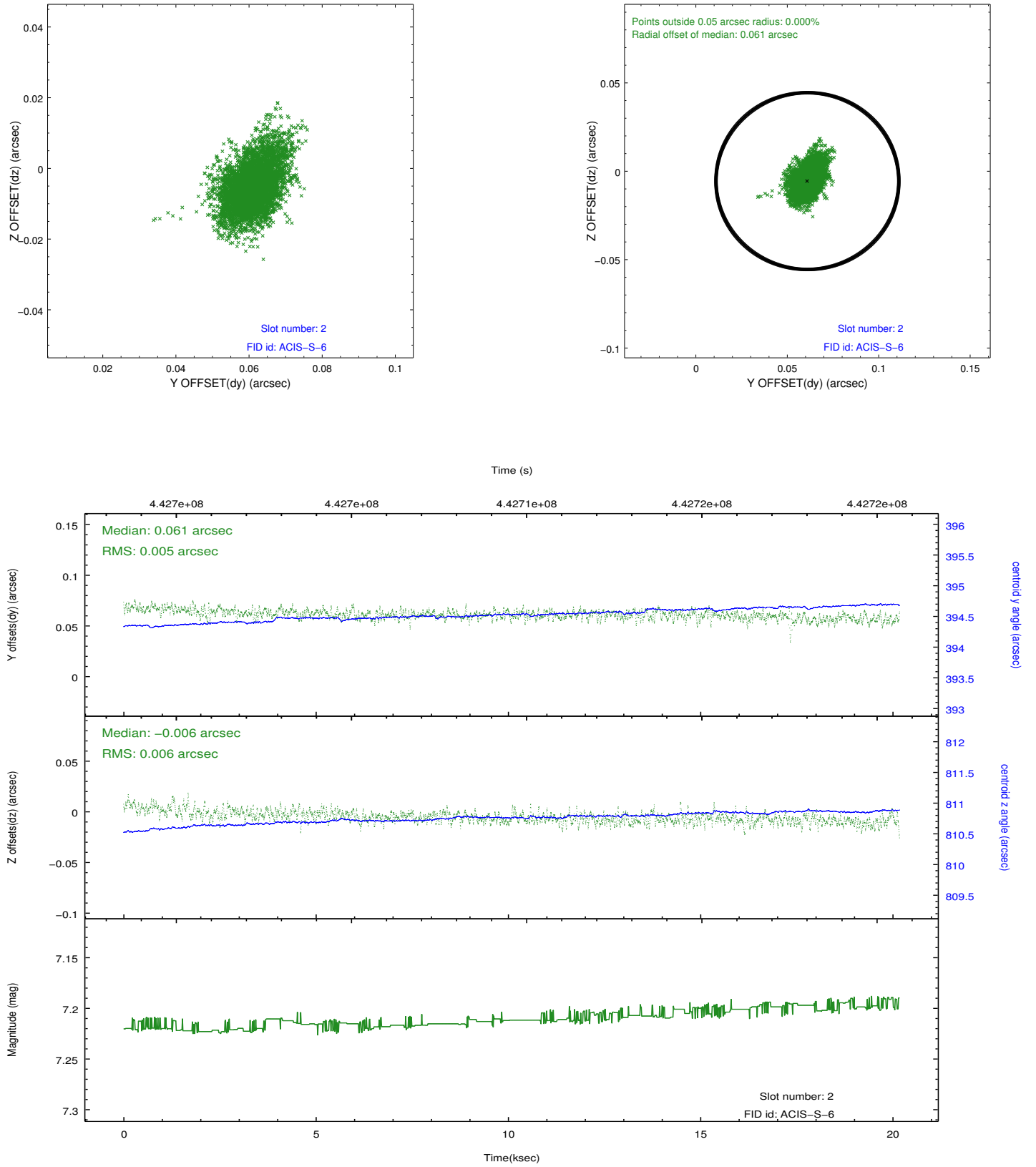
### 2.5.1 Slot 0



## 2.5.2 Slot 1



### 2.5.3 Slot 2



## A Summary

### A.1 Status

V&V Scientist	Jen Lauer
V&V Date (YYYY-MM-DD)	2012.01.17
V&V Edition	1
V&V Disposition and Status	OK
V&V Charge Time	20.009198807359

### A.2 Comments

The guide star in slot 7 was removed from the aspect solution due to poor data quality. The aspect solution is not expected to be degraded by removing one guide star from the solution.