

V&V Reference Report

L2 ASCDS Version : 8.4.5

Observation 12850 - L2 Version 2
Chandra X-Ray Center

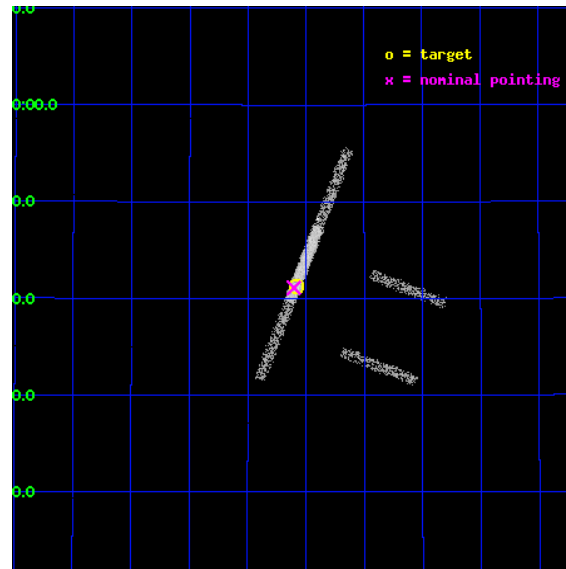
L2 Processing Date : Jul 5 2012

Contents

1	Front	2
2	OBI	3
2.1	OBI	3
2.1.1	Images	3
2.1.2	Bias	3
2.1.3	Parameters	4
2.1.4	Events	4
2.2	Compared Parameters	5
2.3	Aspect	6
2.4	Star Slots	9
2.4.1	Slot 3	9
2.4.2	Slot 4	10
2.4.3	Slot 5	11
2.4.4	Slot 6	12
2.4.5	Slot 7	13
2.5	FID Slots	14
2.5.1	Slot 0	14
2.5.2	Slot 1	15
2.5.3	Slot 2	16
A	Summary	17
A.1	Status	17
A.2	Comments	17

1 Front

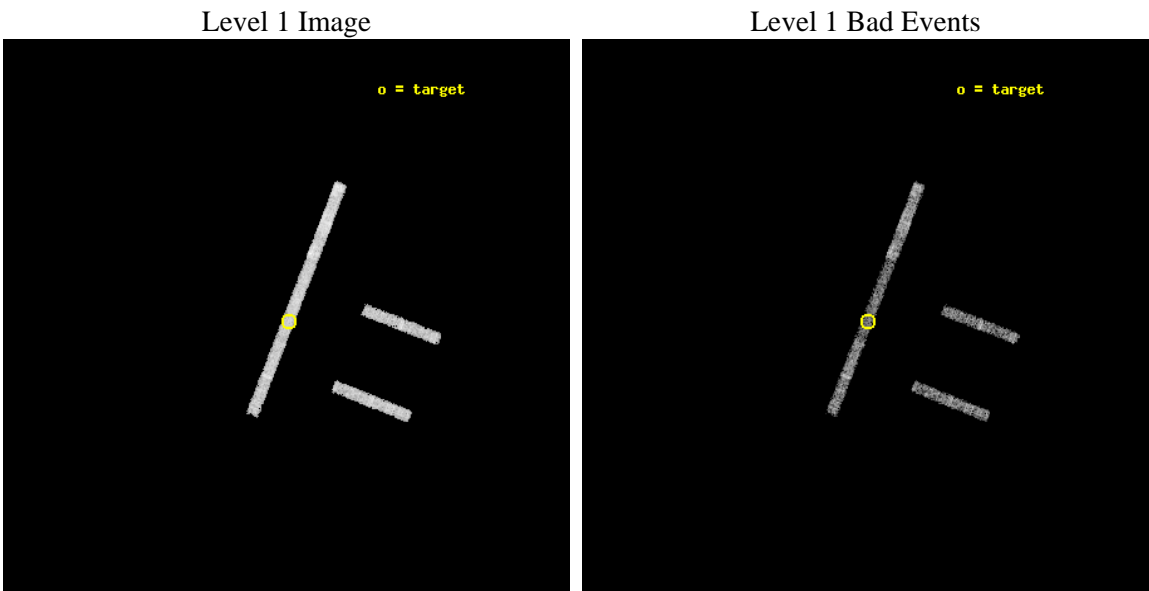
seq_num	702483	Sequence number
obs_id	12850	Observation id
title	X-ray properties of the Youngest Radio Sources	Proposal title
observer	Dr. Aneta Siemiginowska	Principal investigator
object	1843+356	Source name
dtcycle	0	
cycle	P	events from which exps? Prim/Second/Both
ra_targ	281.39625	Observer's specified target RA [deg]
dec_targ	35.687972	Observer's specified target Dec [deg]
ra_nom	281.40091216235	Nominal RA [deg]
dec_nom	35.685099420357	Nominal Dec [deg]
roll_nom	291.31717350998	Nominal Roll [deg]
revision	2	Processing version of data
ontime	5063.7999137044	Sum of GTIs [s]
livetime	4783.3584416402	Livetime [s]
ontime2	5063.7999137044	Sum of GTIs [s]
ontime3	5063.7999137044	Sum of GTIs [s]
ontime6	5063.7999137044	Sum of GTIs [s]
ontime7	5063.7999137044	Sum of GTIs [s]
ontime8	5063.7999137044	Sum of GTIs [s]
l2events	4914	Number of level 2 events



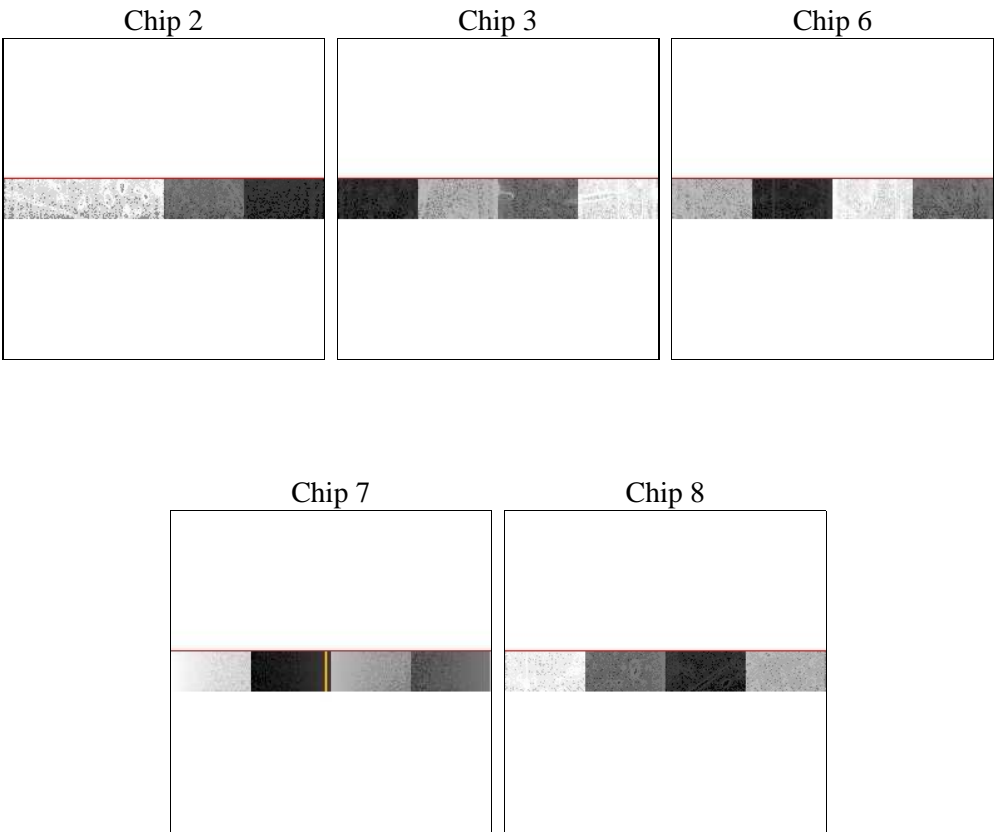
2 OBI

2.1 OBI

2.1.1 Images



2.1.2 Bias



2.1.3 Parameters

obi_num	0	Obi number	sched_exp_time	5000.000000	[s] Scheduled observation exposure time
ascdsver	8.4.5	Processing system revision	ontime	5063.7999137044	Sum of GTIs [s]
caldbver	4.5.0	 	ontime2	5063.7999137044	Sum of GTIs [s]
date	2012-07-05T20:22:45	Date and time of file creation	ontime3	5063.7999137044	Sum of GTIs [s]
revision	2	Processing version of data	ontime6	5063.7999137044	Sum of GTIs [s]
			ontime7	5063.7999137044	Sum of GTIs [s]
			ontime8	5063.7999137044	Sum of GTIs [s]
			l1events	32016	Number of level 1 events

2.1.4 Events

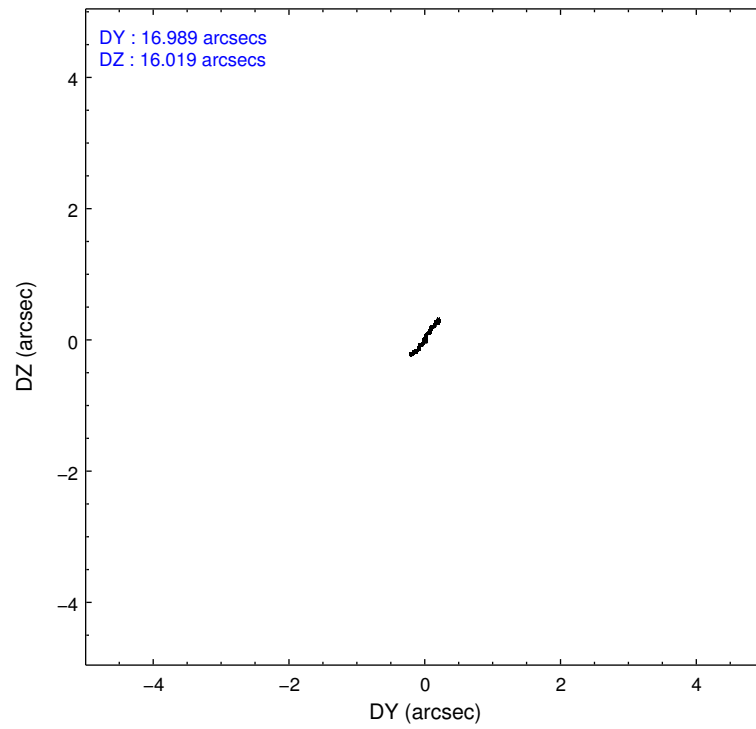
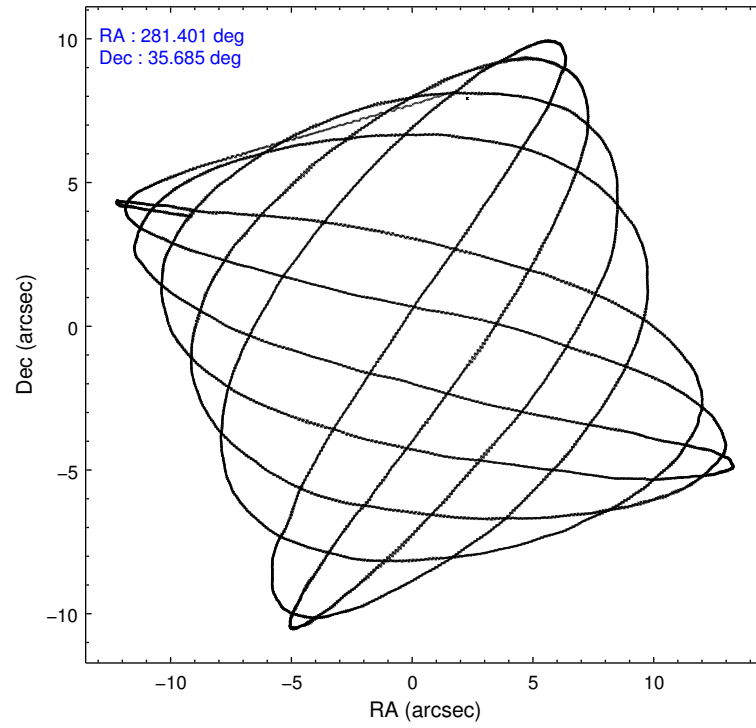
	ccd 2	ccd 3	ccd 6	ccd 7	ccd 8
level 1 events	5448	5116	5856	6319	9277
rejected events	4839	4543	5182	3374	7159
rejected %	88%	88%	88%	53%	77%

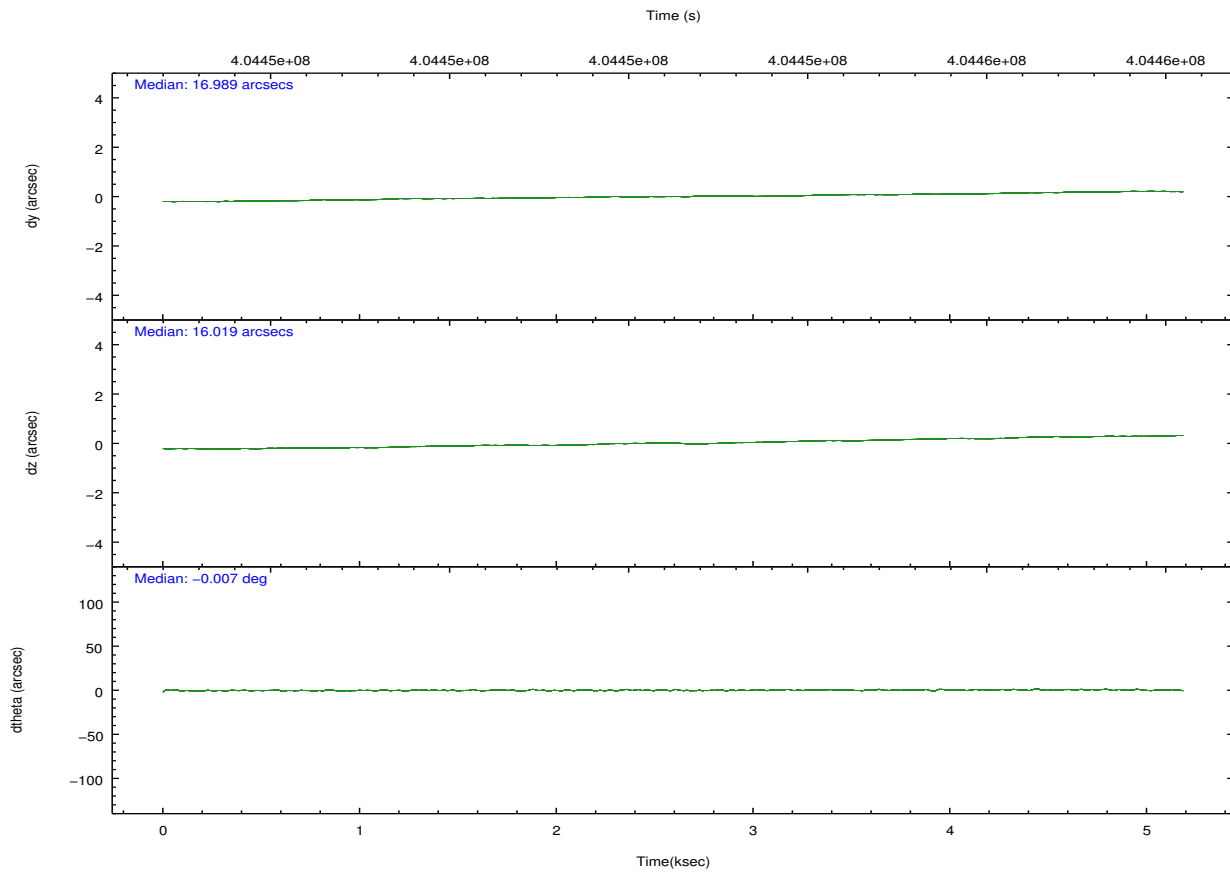
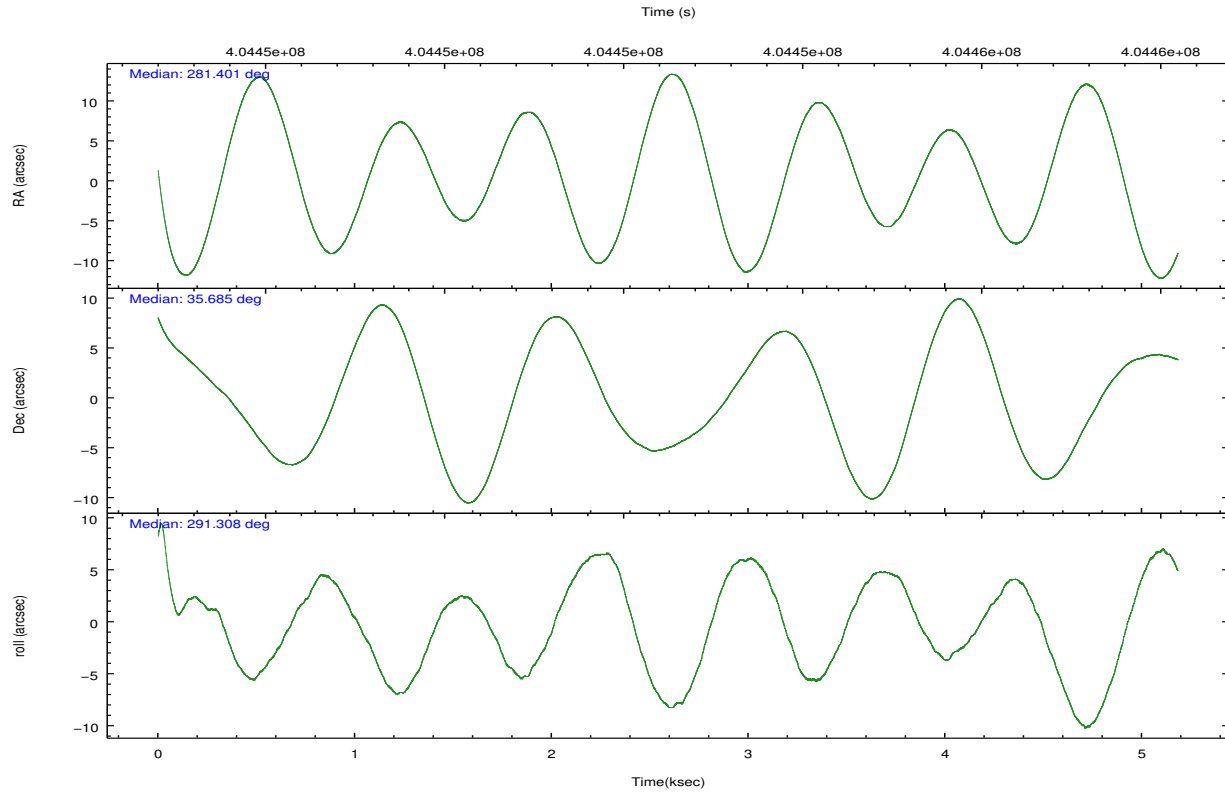
	ccd 2	ccd 3	ccd 6	ccd 7	ccd 8
grade 0 events	186	177	205	306	524
	3%	3%	3%	4%	5%
grade 1 events	0	1	1	6	3
	0%	0%	0%	0%	0%
grade 2 events	112	109	128	592	462
	2%	2%	2%	9%	4%
grade 3 events	89	95	96	358	206
	1%	1%	1%	5%	2%
grade 4 events	119	91	124	359	206
	2%	1%	2%	5%	2%
grade 5 events	191	196	198	692	311
	3%	3%	3%	10%	3%
grade 6 events	103	101	121	1330	720
	1%	1%	2%	21%	7%
grade 7 events	4648	4346	4983	2676	6845
	85%	84%	85%	42%	73%

2.2 Compared Parameters

Parameter	Planned	Actual	Parameter	Planned	Actual
Instrument	ACIS	ACIS	Obspar format version number	7	7
Detector	ACIS-23678	ACIS-23678	Obspar file type	PREDICTED	ACTUAL
Grating	NONE	NONE	Obspar update status	NONE	UPDATED
Data mode	VFAINT	VFAINT	Number of optional ACIS chips dropped	0	0
Observation mode	POINTING	POINTING	On-chip summing requested	N	N
[deg] Pointing RA	281.374456	281.4009121623498	Subarray requested	CUSTOM	1/8
[deg] Pointing Dec	35.701848	35.6850994203571	Subarray start row	449	449
[deg] Pointing Roll	291.175954	291.3171735099829	Subarray row count	128	128
[mm] SIM focus pos	-0.684267	-0.6828225247311905	Alternating exposures requested	N	N
[mm] SIM defocus	0	0.001444936568705701	[s] Primary exposure time	0.000000	0.7
[mm] SIM translation stage pos	-190.132523	-190.1425803651734			
[mm] SIM translation stage offset	0	0.01005778216563158			
[s] Observation start time (MET)	404450841.184000	404449281.89972			
Observation start date	2010-10-26T03:26:15	2010-10-26T03:01:21			
[s] Observation end time (MET)	404455841.184000	404456353.37509			
Observation end date	2010-10-26T04:49:35	2010-10-26T04:59:13			
Read mode	TIMED	TIMED			

2.3 Aspect



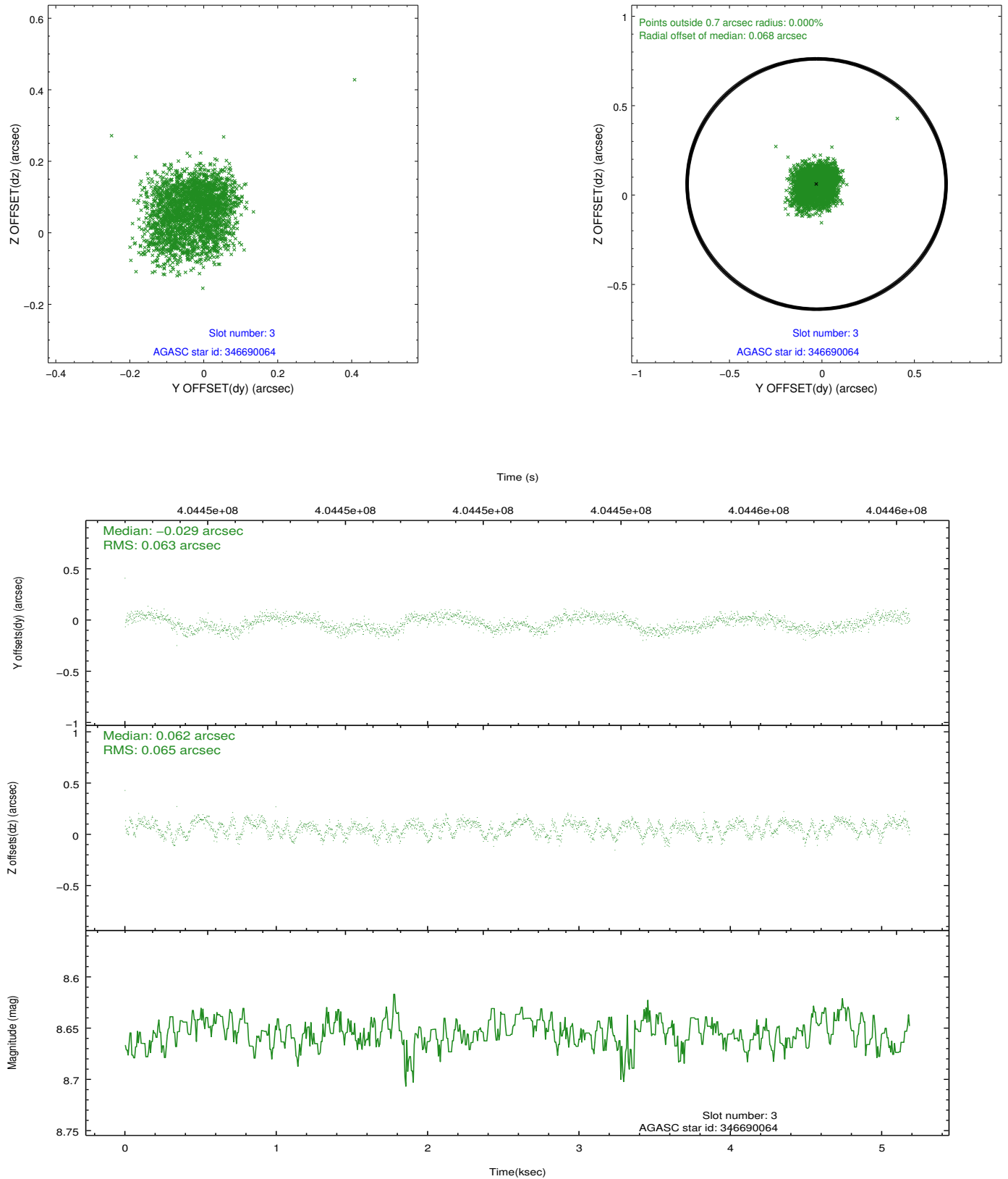


Slot Statistics

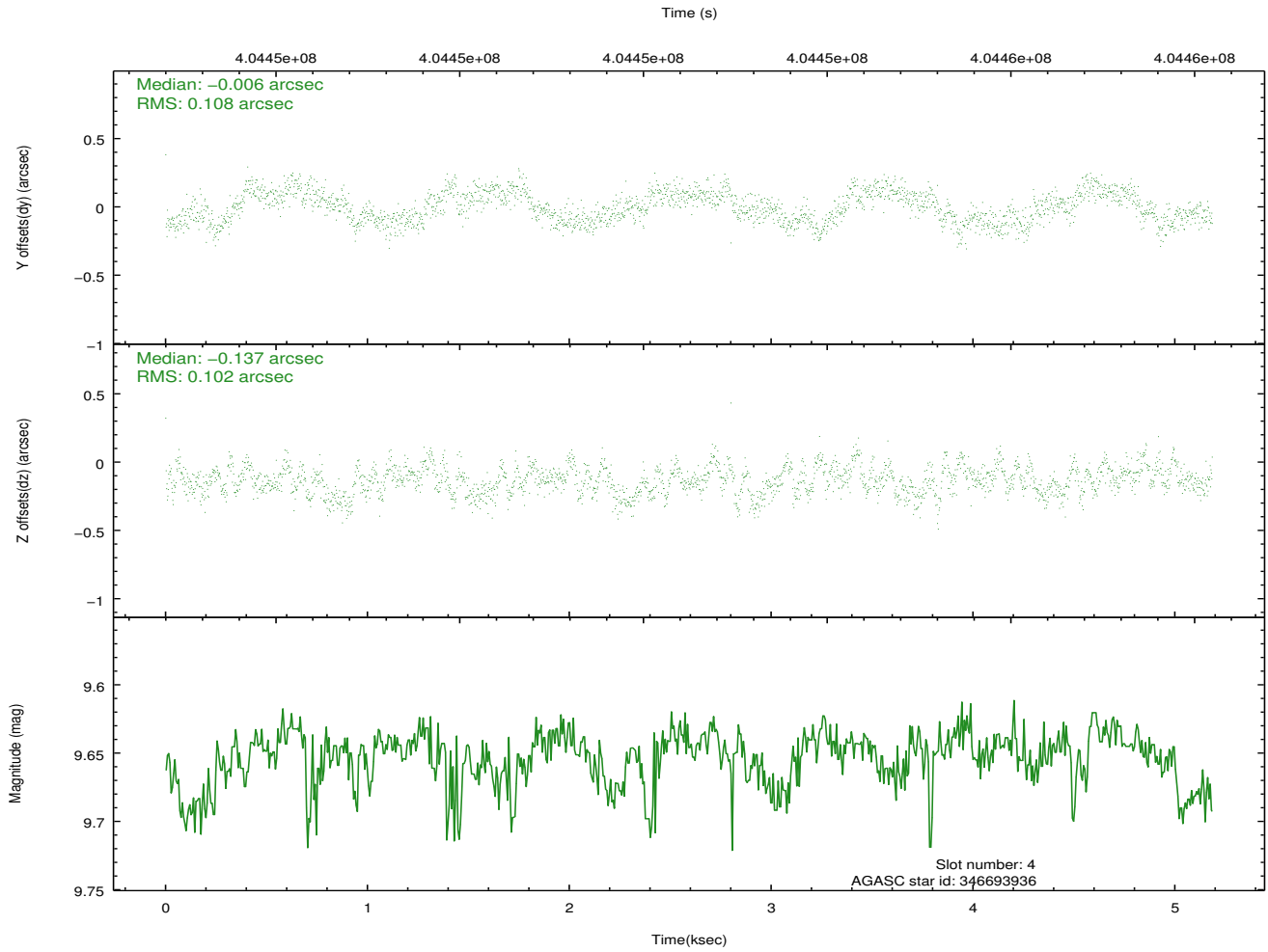
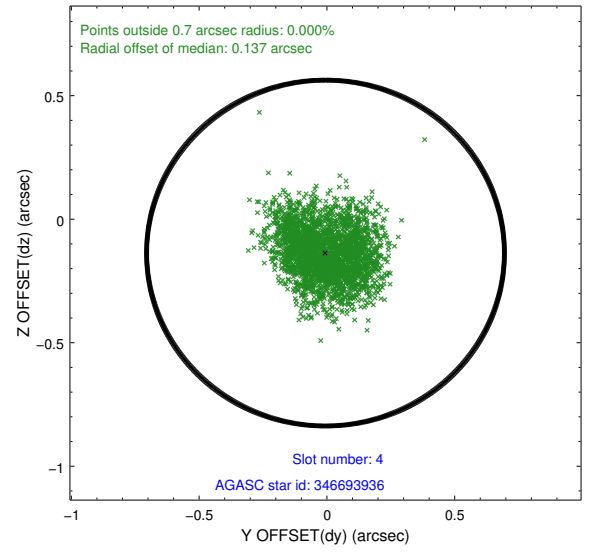
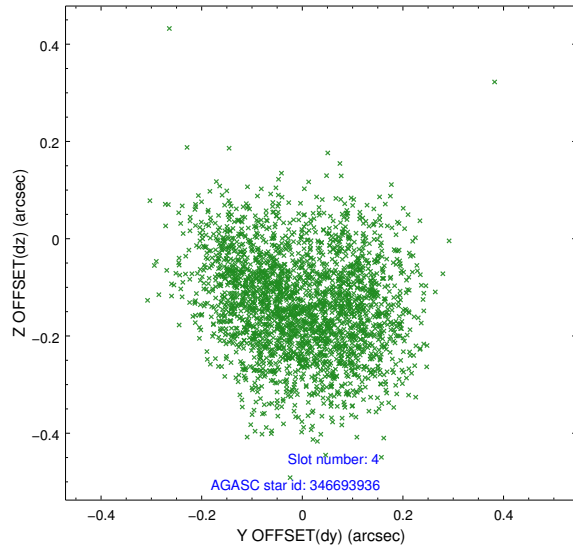
slot	status	id	mag	n_pts	med_dy	med_dz	dr1	dr2	ra	dec	mean_y	mean_z
0	FID	ACIS-S-1	6.99	1265	0.098	-0.122	0.009	0.015	0.000000	0.000000	926.16	-1733.12
1	FID	ACIS-S-5	7.05	1265	-0.121	0.061	0.008	0.013	0.000000	0.000000	-1822.45	163.34
2	FID	ACIS-S-6	7.15	1265	0.002	0.073	0.008	0.013	0.000000	0.000000	390.29	808.69
3	GUIDE	346690064	8.65	2529	-0.029	0.062	0.098	0.146	280.956087	35.601473	-106.89	-1270.96
4	GUIDE	346693936	9.65	2530	-0.006	-0.137	0.161	0.247	280.775120	35.228247	949.33	-2257.41
5	GUIDE	346830952	8.30	2530	-0.038	0.032	0.093	0.140	281.438436	35.503615	734.26	-83.15
6	GUIDE	347220936	9.49	2530	0.175	0.038	0.108	0.177	280.962663	36.165739	-1990.59	-511.66
7	GUIDE	347341608	7.89	2528	-0.109	0.010	0.057	0.095	281.782687	35.875691	-156.10	1337.77

2.4 Star Slots

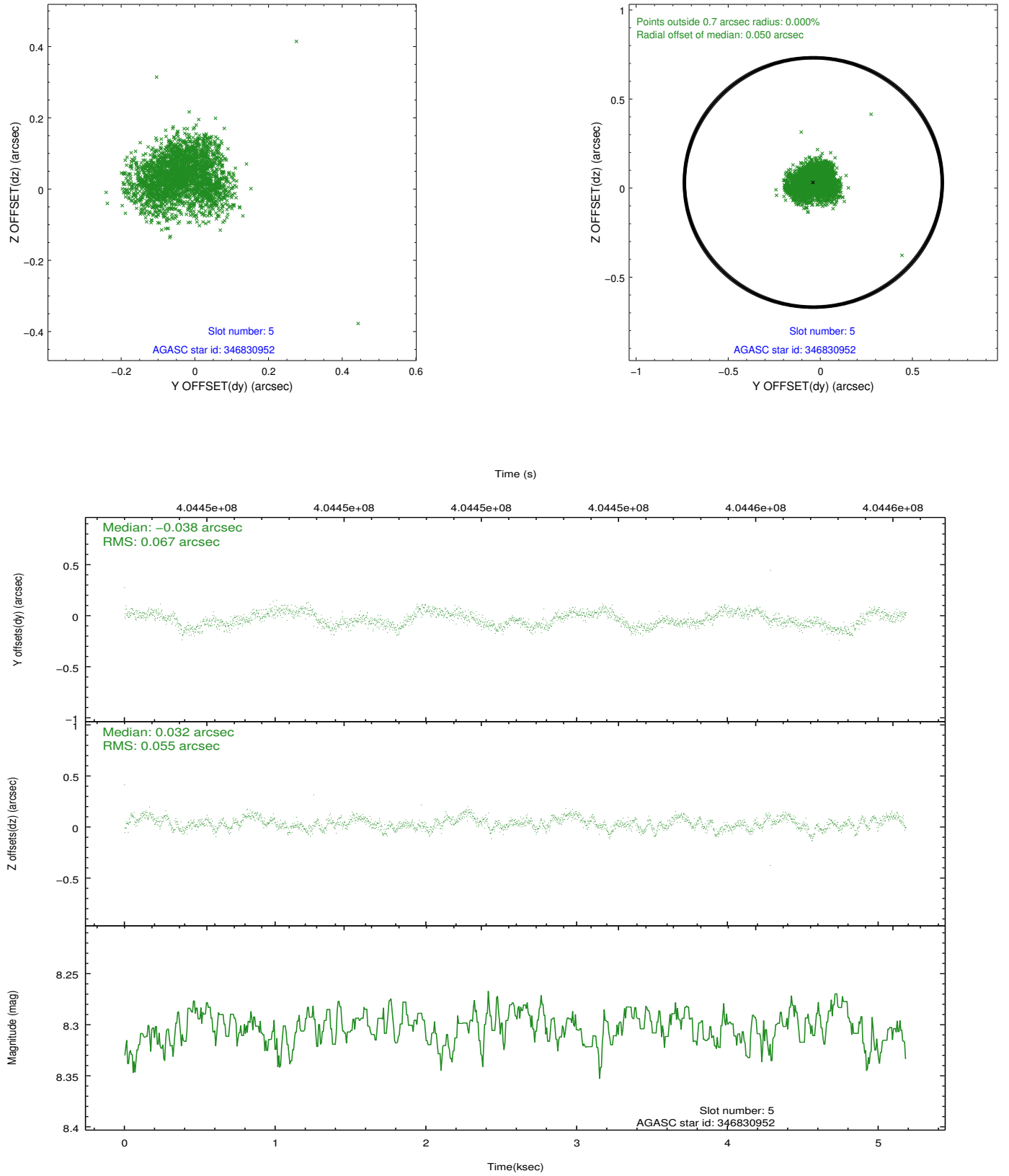
2.4.1 Slot 3



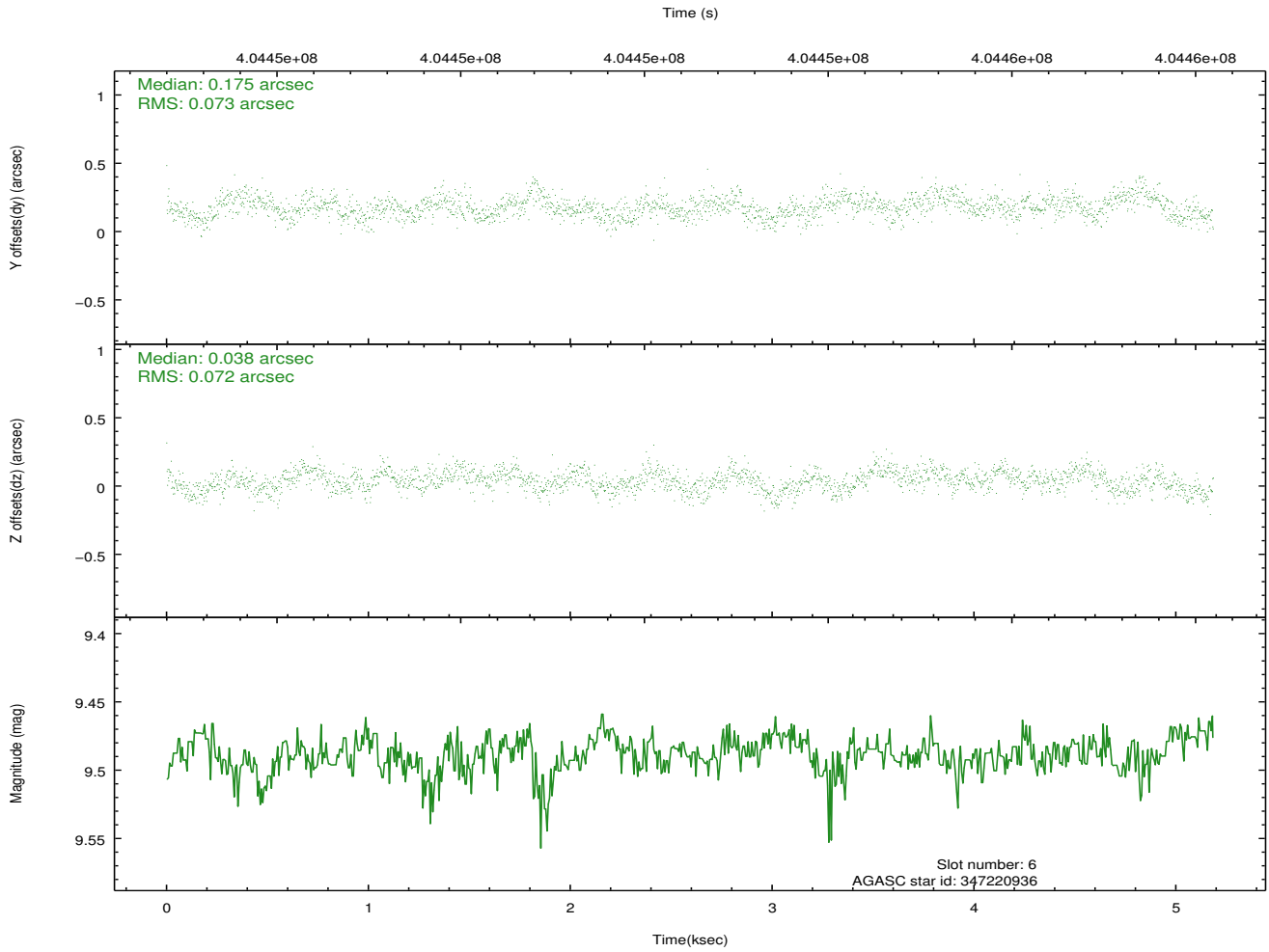
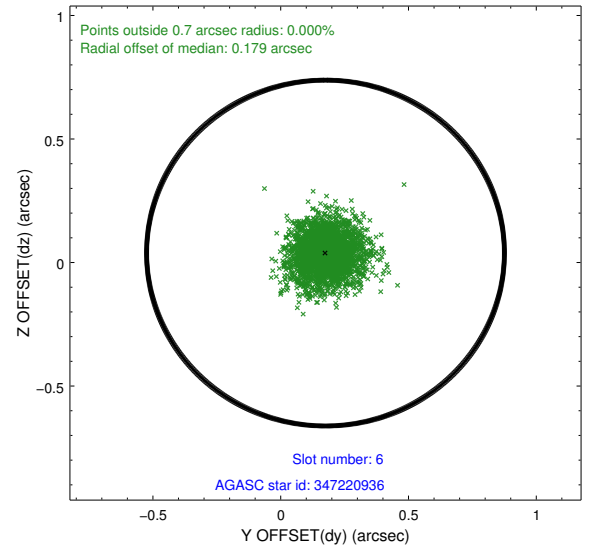
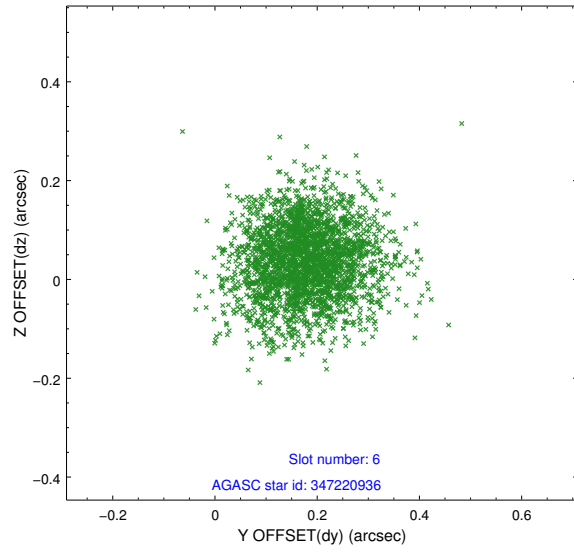
2.4.2 Slot 4



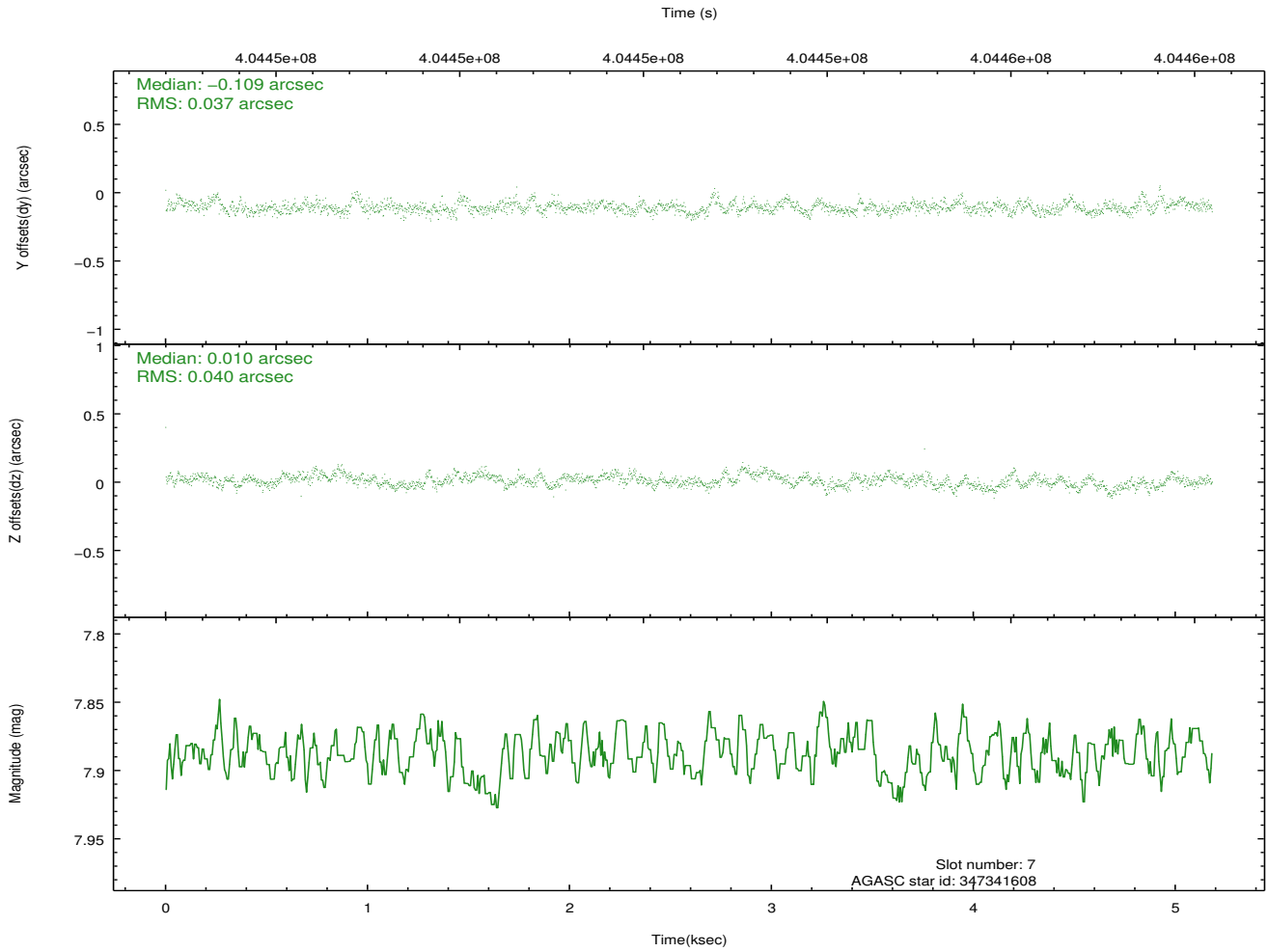
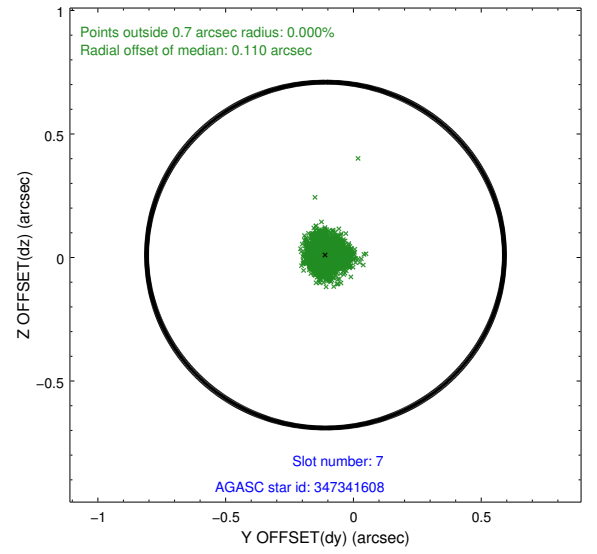
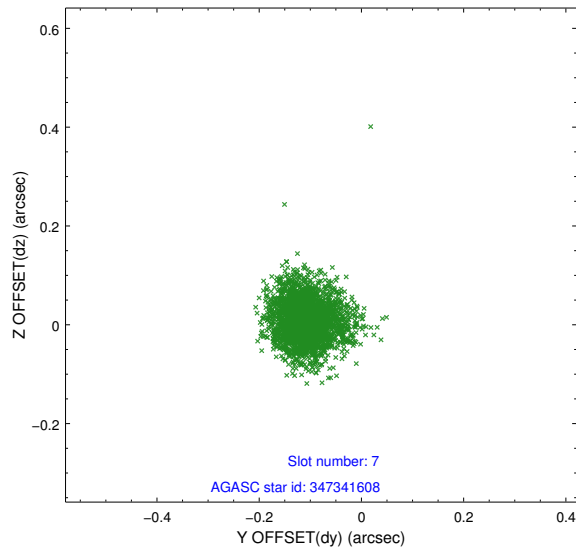
2.4.3 Slot 5



2.4.4 Slot 6

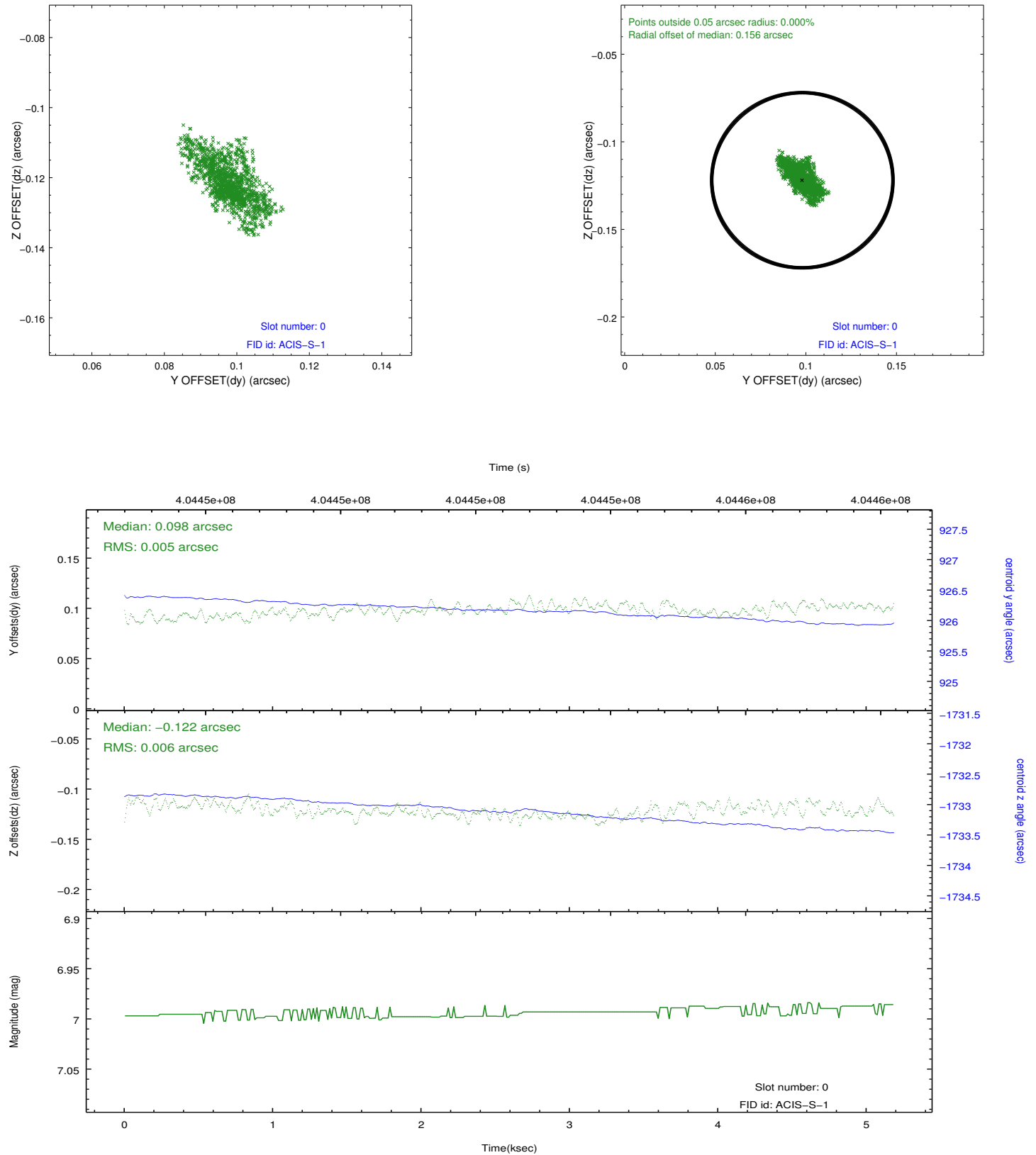


2.4.5 Slot 7

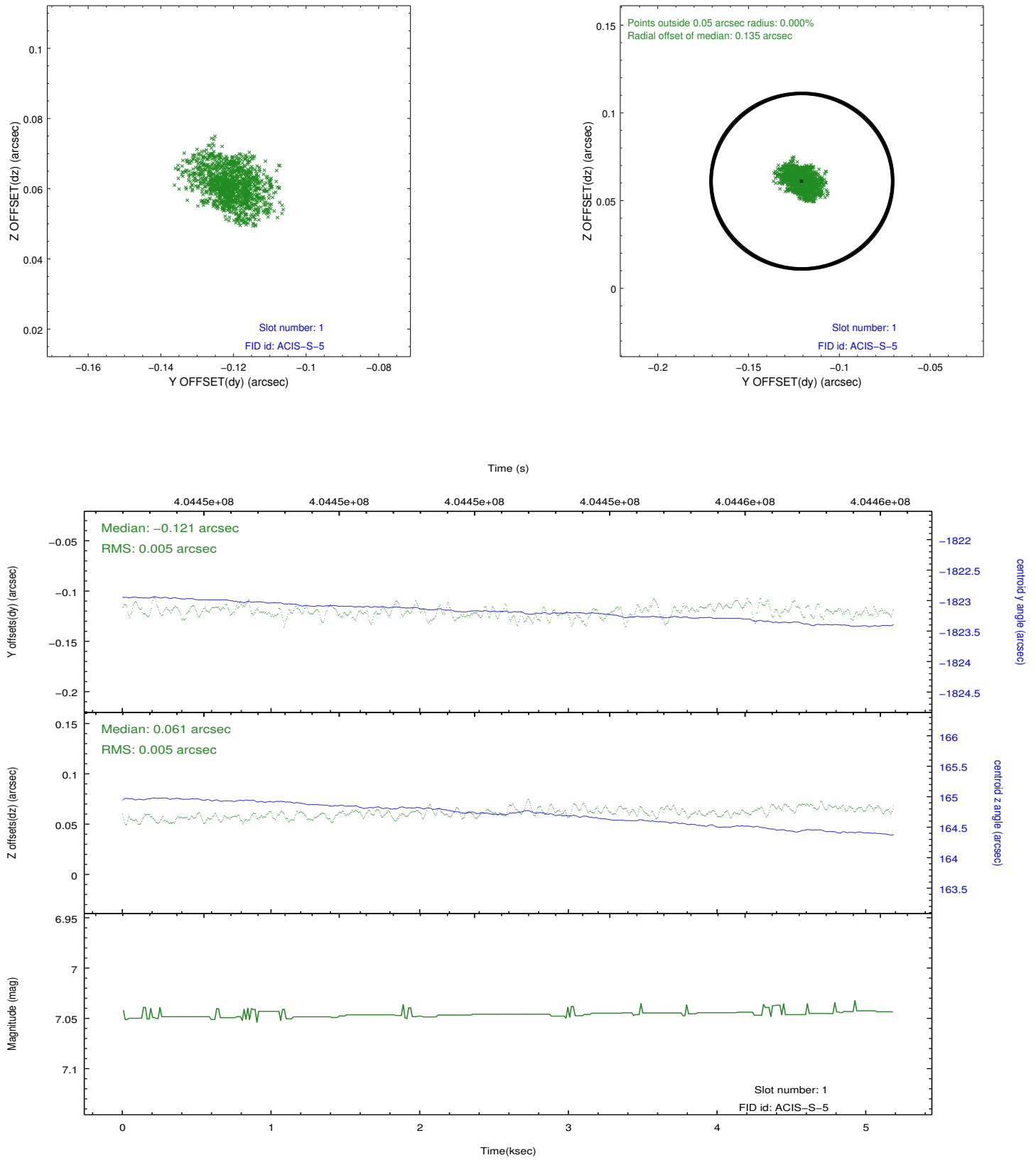


2.5 FID Slots

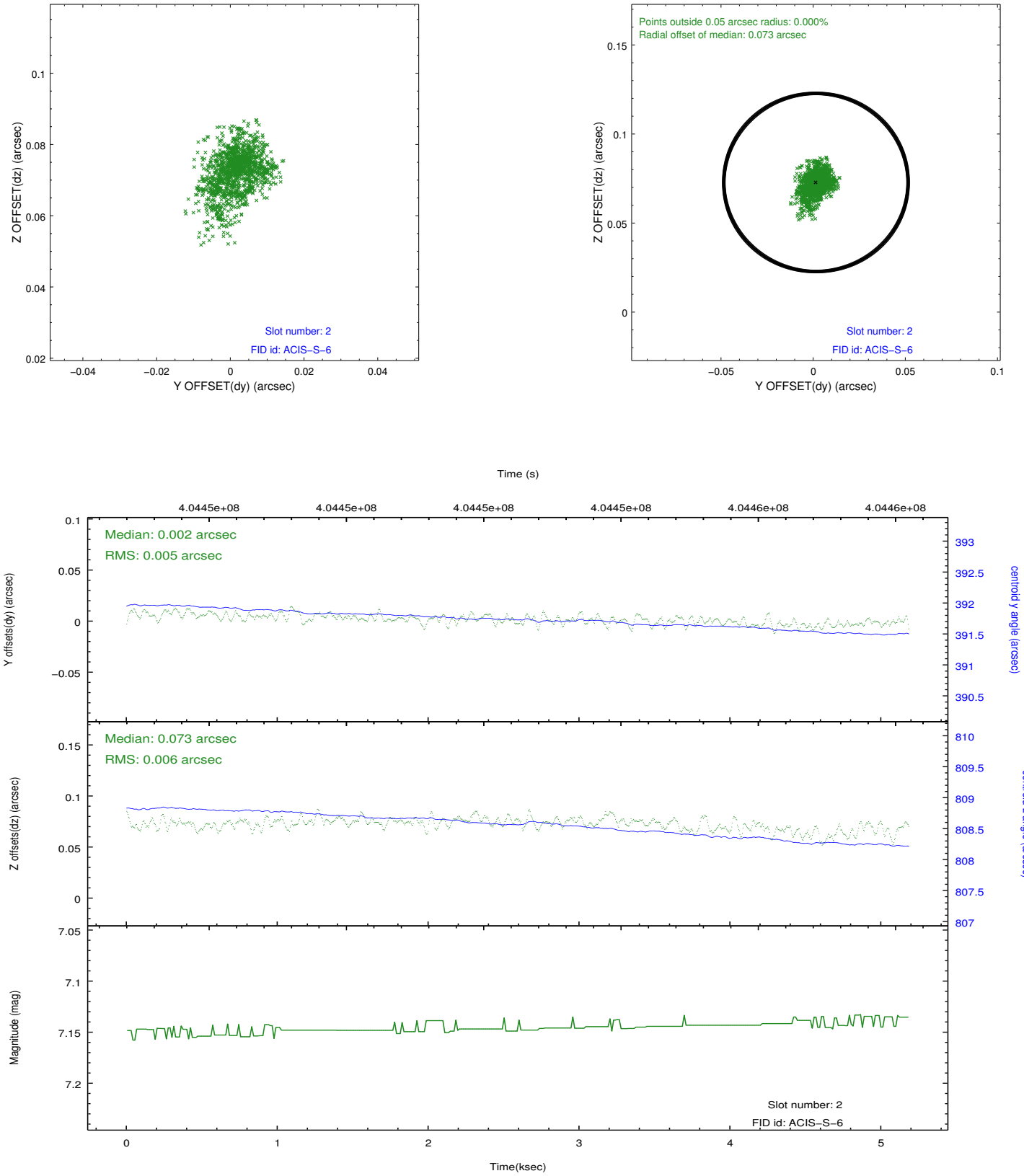
2.5.1 Slot 0



2.5.2 Slot 1



2.5.3 Slot 2



A Summary

A.1 Status

V&V Scientist	Jen Lauer
V&V Date (YYYY-MM-DD)	2012.07.13
V&V Edition	1
V&V Disposition and Status	OK
V&V Charge Time	5.0637999137044

A.2 Comments