

V&V Reference Report

L2 ASCDS Version : 8.4.3

Observation 12811 - L2 Version 2
Chandra X-Ray Center

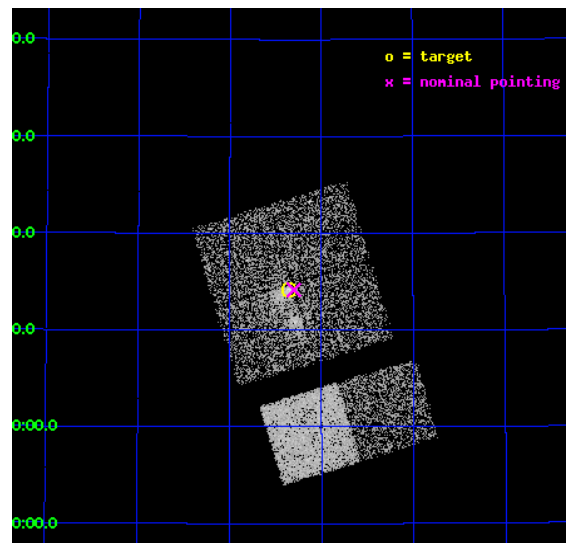
L2 Processing Date : Feb 1 2012

Contents

1	Front	2
2	OBI	3
2.1	OBI	3
2.1.1	Images	3
2.1.2	Bias	3
2.1.3	Parameters	4
2.1.4	Events	4
2.2	Compared Parameters	5
2.3	Aspect	6
2.4	Star Slots	9
2.4.1	Slot 3	9
2.4.2	Slot 4	10
2.4.3	Slot 5	11
2.4.4	Slot 6	12
2.4.5	Slot 7	13
2.5	FID Slots	14
2.5.1	Slot 0	14
2.5.2	Slot 1	15
2.5.3	Slot 2	16
A	Summary	17
A.1	Status	17
A.2	Comments	17

1 Front

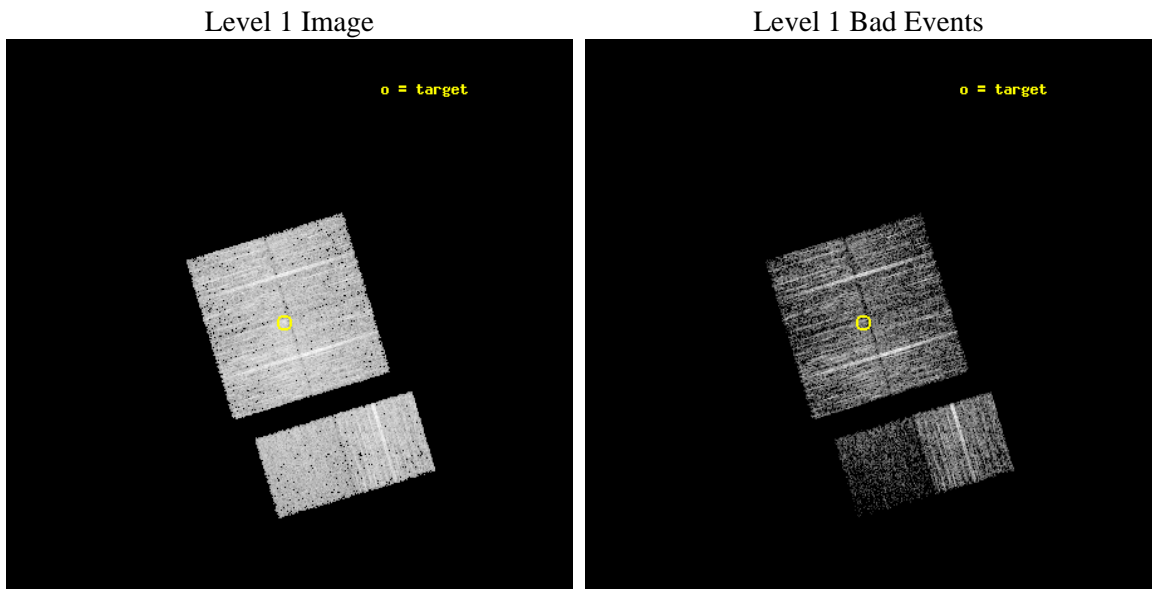
seq_num	702447	Sequence number
obs_id	12811	Observation id
title	A Systematic Chandra Survey of AGN in Major Mergers -- How many Binary AGN are out there?	Proposal title
observer	DR. Kevin Schawinski	Principal investigator
object	GZ_merger_AGN_1	Source name
dtcycle	0	
cycle	P	events from which exps? Prim/Second/Both
ra_targ	117.8375	Observer's specified target RA [deg]
dec_targ	50.236083	Observer's specified target Dec [deg]
ra_nom	117.82494147022	Nominal RA [deg]
dec_nom	50.235896302587	Nominal Dec [deg]
roll_nom	163.23400972602	Nominal Roll [deg]
revision	2	Processing version of data
ontime	4963.1999815702	Sum of GTIs [s]
livetime	4900.3529549234	Livetime [s]
ontime0	4963.1999815702	Sum of GTIs [s]
ontime1	4963.1999815702	Sum of GTIs [s]
ontime2	4963.1999815702	Sum of GTIs [s]
ontime3	4963.1999815702	Sum of GTIs [s]
ontime6	4963.1999815702	Sum of GTIs [s]
ontime7	4963.1999815702	Sum of GTIs [s]
l2events	23750	Number of level 2 events



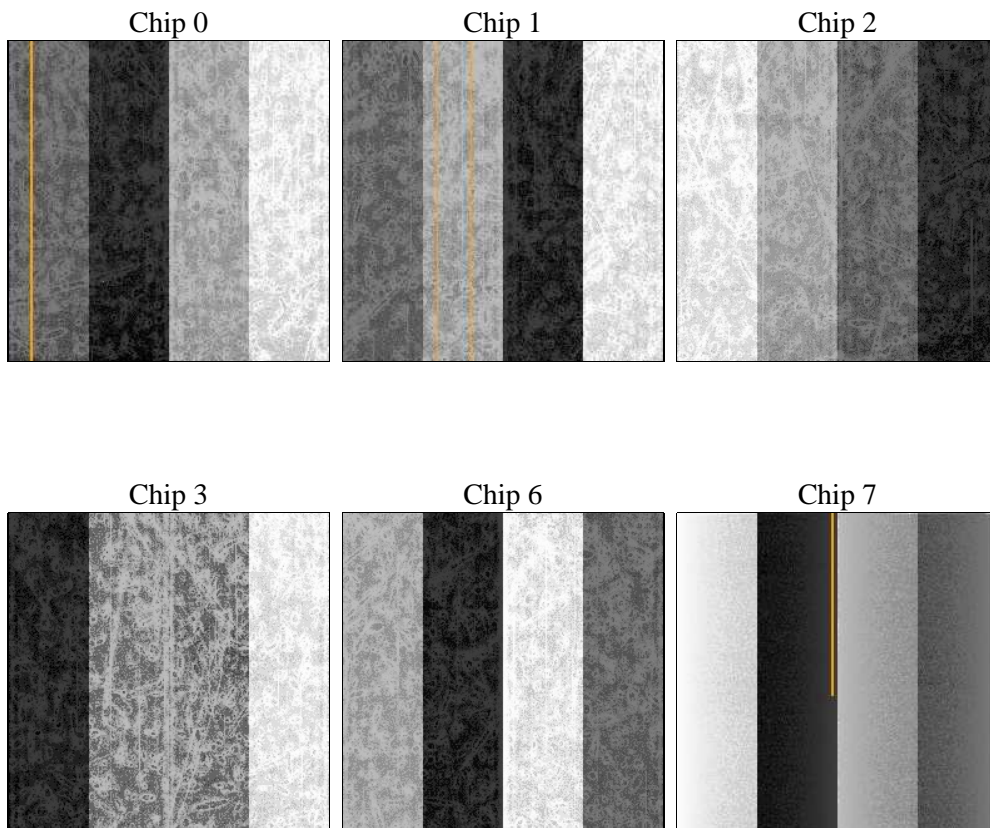
2 OBI

2.1 OBI

2.1.1 Images



2.1.2 Bias



2.1.3 Parameters

obi_num	0	Obi number	sched_exp_time	5000.000000	[s] Scheduled observation exposure time
ascdsver	8.4.3	Processing system revision	ontime	4963.1999815702	Sum of GTIs [s]
caldsver	4.4.7	 	ontime0	4963.1999815702	Sum of GTIs [s]
date	2012-02-01T08:29:47	Date and time of file creation	ontime1	4963.1999815702	Sum of GTIs [s]
revision	2	Processing version of data	ontime2	4963.1999815702	Sum of GTIs [s]
			ontime3	4963.1999815702	Sum of GTIs [s]
			ontime6	4963.1999815702	Sum of GTIs [s]
			ontime7	4963.1999815702	Sum of GTIs [s]
			l1events	161609	Number of level 1 events

2.1.4 Events

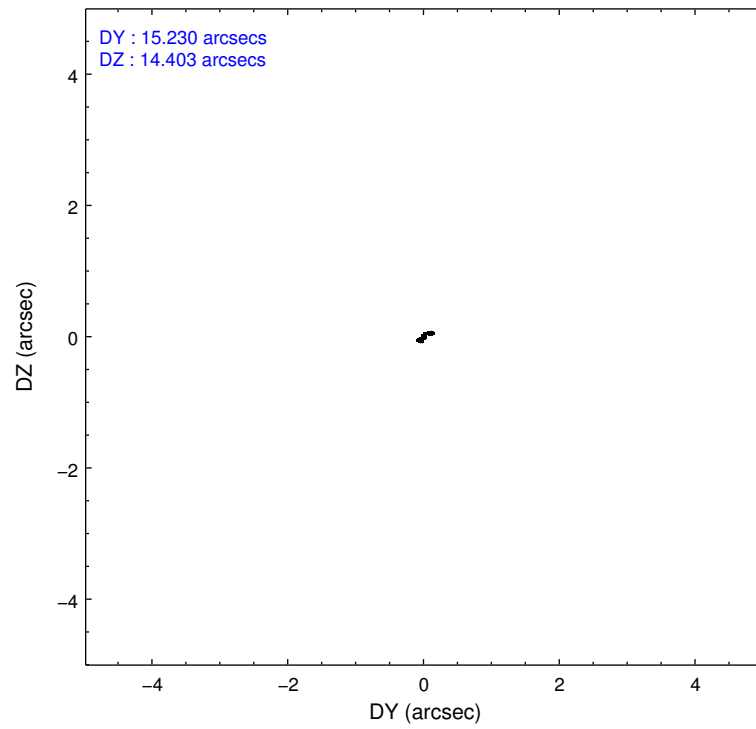
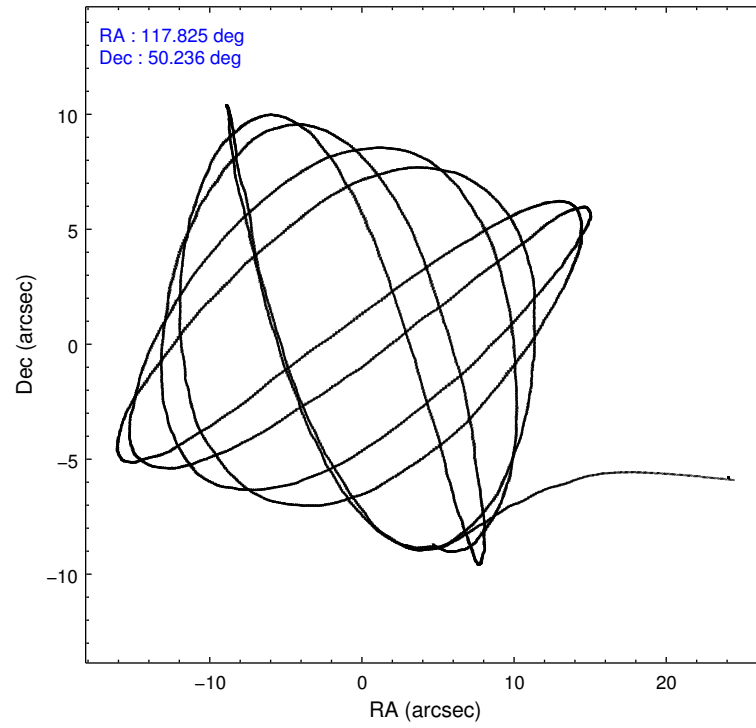
	ccd 0	ccd 1	ccd 2	ccd 3	ccd 6	ccd 7
level 1 events	24551	27460	28697	31709	29560	19632
rejected events	21668	24307	25585	27746	26712	8550
rejected %	88%	88%	89%	87%	90%	43%

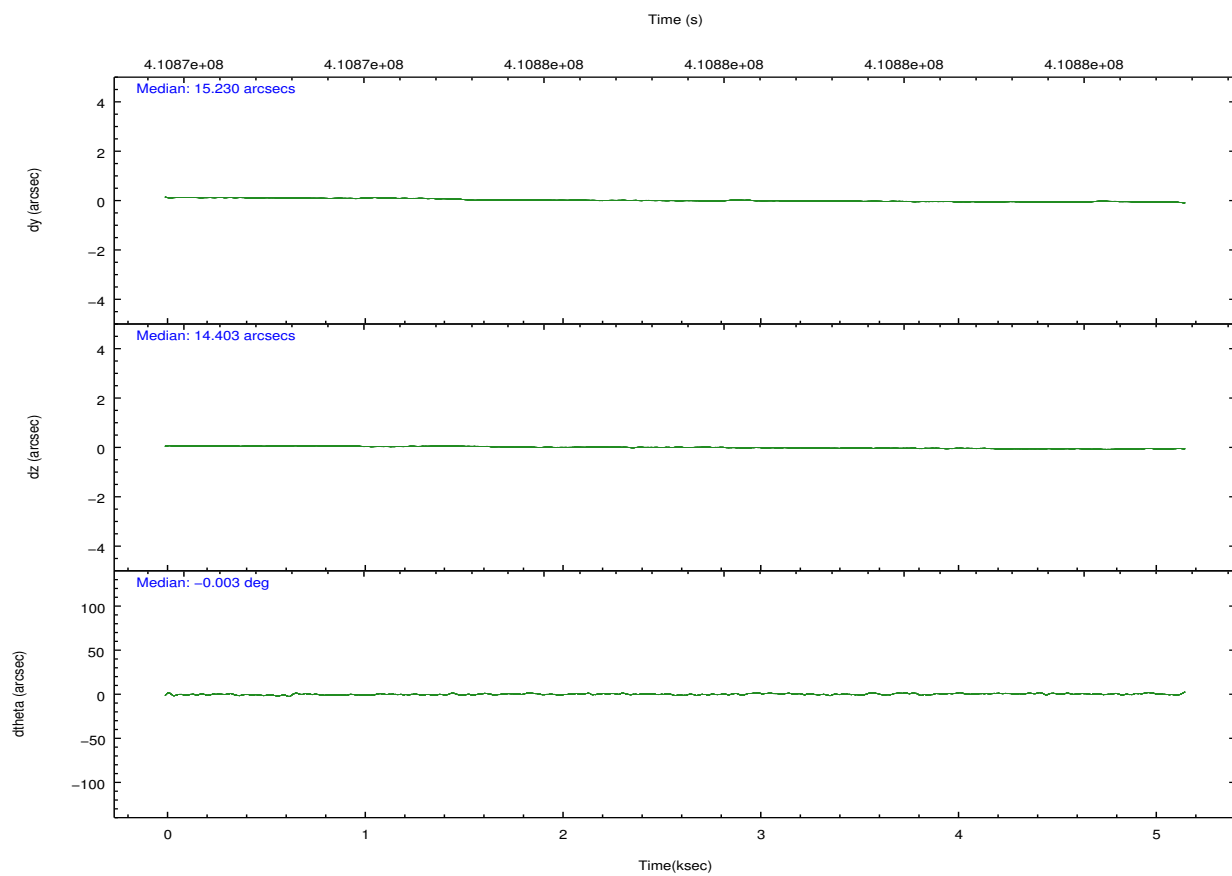
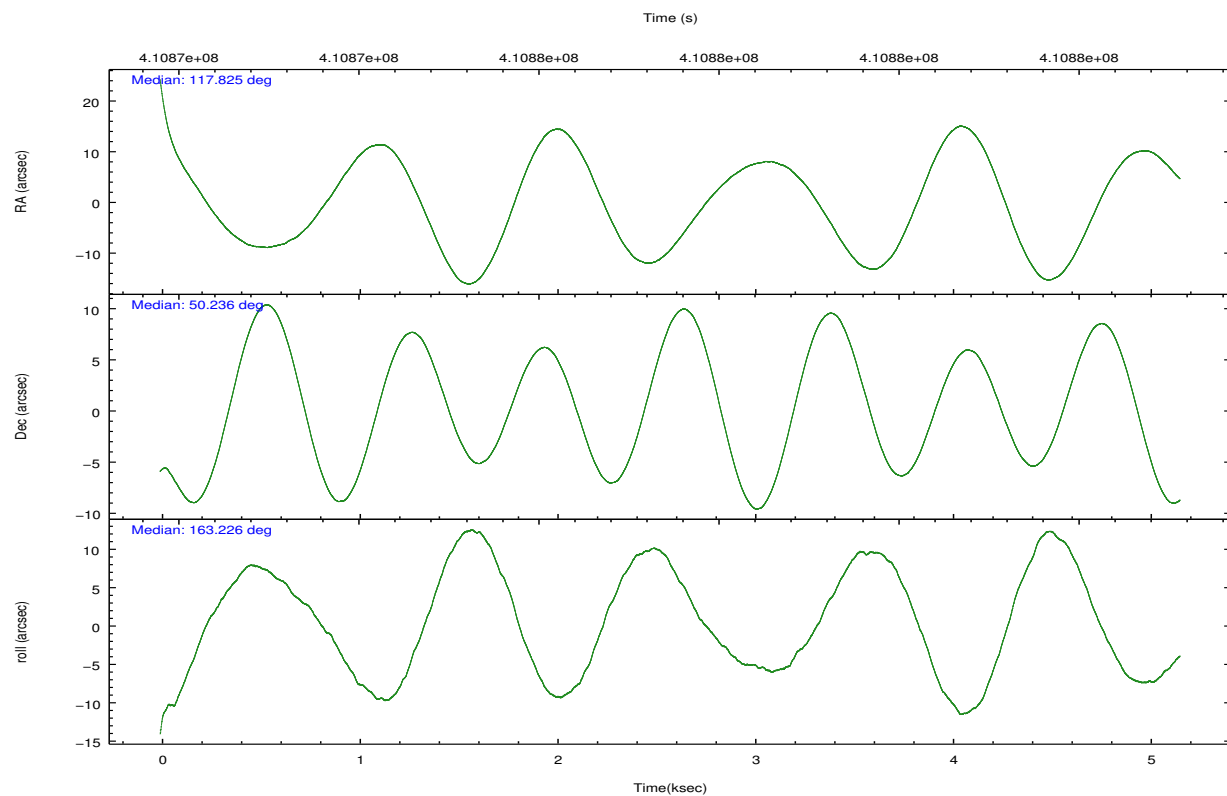
	ccd 0	ccd 1	ccd 2	ccd 3	ccd 6	ccd 7
grade 0 events	1207	1311	1369	2225	1139	1434
	4%	4%	4%	7%	3%	7%
grade 1 events	19	20	28	17	17	58
	0%	0%	0%	0%	0%	0%
grade 2 events	651	682	709	730	659	2721
	2%	2%	2%	2%	2%	13%
grade 3 events	316	320	296	307	311	1065
	1%	1%	1%	0%	1%	5%
grade 4 events	298	310	317	275	277	1063
	1%	1%	1%	0%	0%	5%
grade 5 events	590	668	598	688	683	2123
	2%	2%	2%	2%	2%	10%
grade 6 events	414	534	422	427	466	4810
	1%	1%	1%	1%	1%	24%
grade 7 events	21056	23615	24958	27040	26008	6358
	85%	85%	86%	85%	87%	32%

2.2 Compared Parameters

Parameter	Planned	Actual	Parameter	Planned	Actual
Instrument	ACIS	ACIS	Obspar format version number	7	7
Detector	ACIS-012367	ACIS-012367	Obspar file type	PREDICTED	ACTUAL
Grating	NONE	NONE	Obspar update status	NONE	UPDATED
Data mode	FAINT	FAINT	CCD I0 on	Y	Y
Observation mode	POINTING	POINTING	CCD I1 on	Y	Y
[deg] Pointing RA	117.866682	117.8249414702189	CCD I2 on	Y	Y
[deg] Pointing Dec	50.242414	50.23589630258717	CCD I3 on	Y	Y
[deg] Pointing Roll	162.993210	163.2340097260238	CCD S0 on	N	N
[mm] SIM focus pos	-0.782348	-0.7809083437167272	CCD S1 on	N	N
[mm] SIM defocus	0	0.001439871863259334	CCD S2 on	O1	Y
[mm] SIM translation stage pos	-233.592463	-233.5874344608287	CCD S3 on	O2	Y
[mm] SIM translation stage offset	0	-0.005018542100998502	CCD S4 on	N	N
[s] Observation start time (MET)	410873297.184000	410871743.11838	CCD S5 on	N	N
Observation start date	2011-01-08T11:27:11	2011-01-08T11:02:23	Number of optional ACIS chips dropped	0	0
[s] Observation end time (MET)	410878297.184000	410879049.83125	On-chip summing requested	N	N
Observation end date	2011-01-08T12:50:31	2011-01-08T13:04:09	Subarray requested	NONE	NONE
Read mode	TIMED	TIMED	Alternating exposures requested	N	N
			[s] Primary exposure time	0.000000	3.2

2.3 Aspect



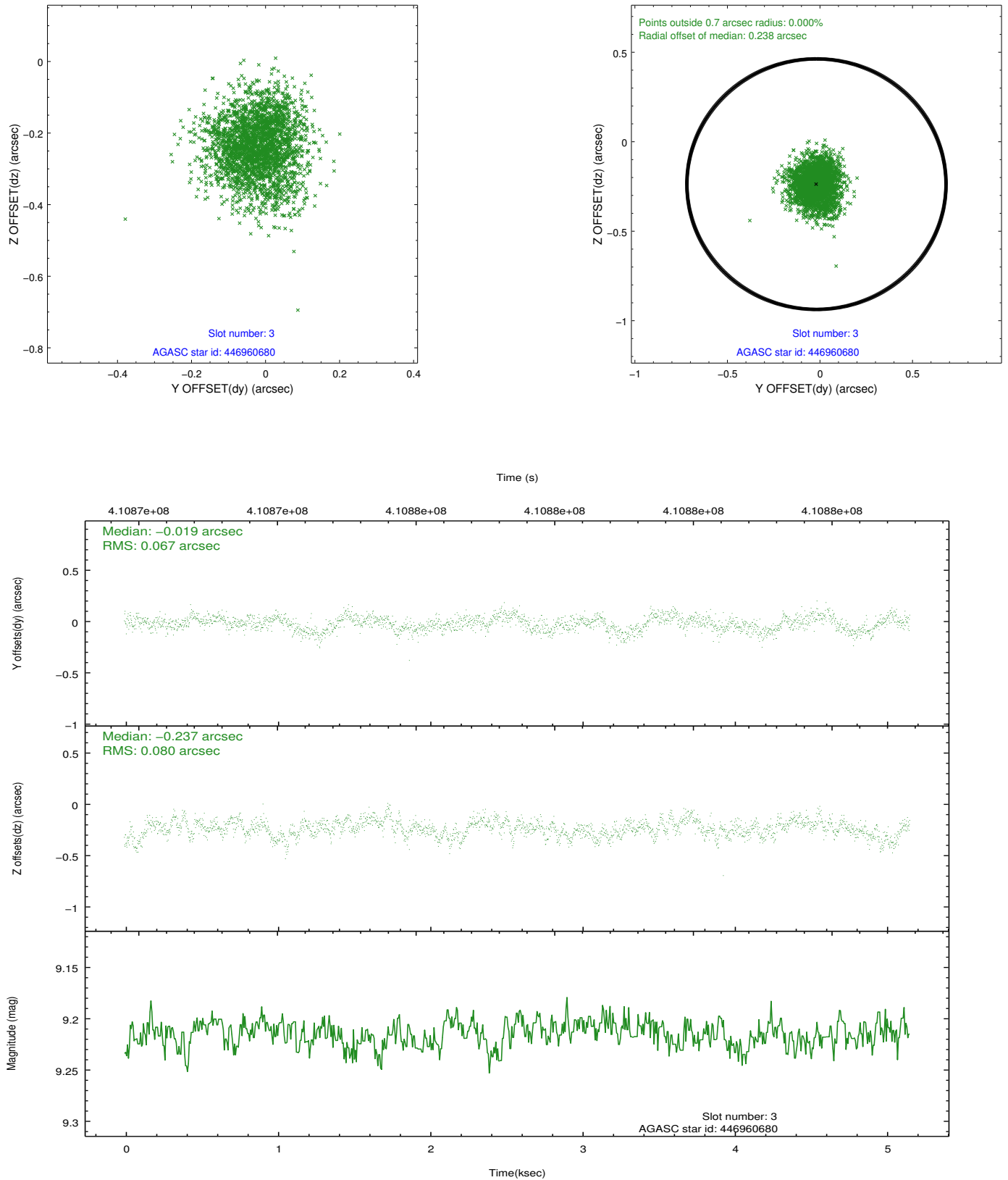


Slot Statistics

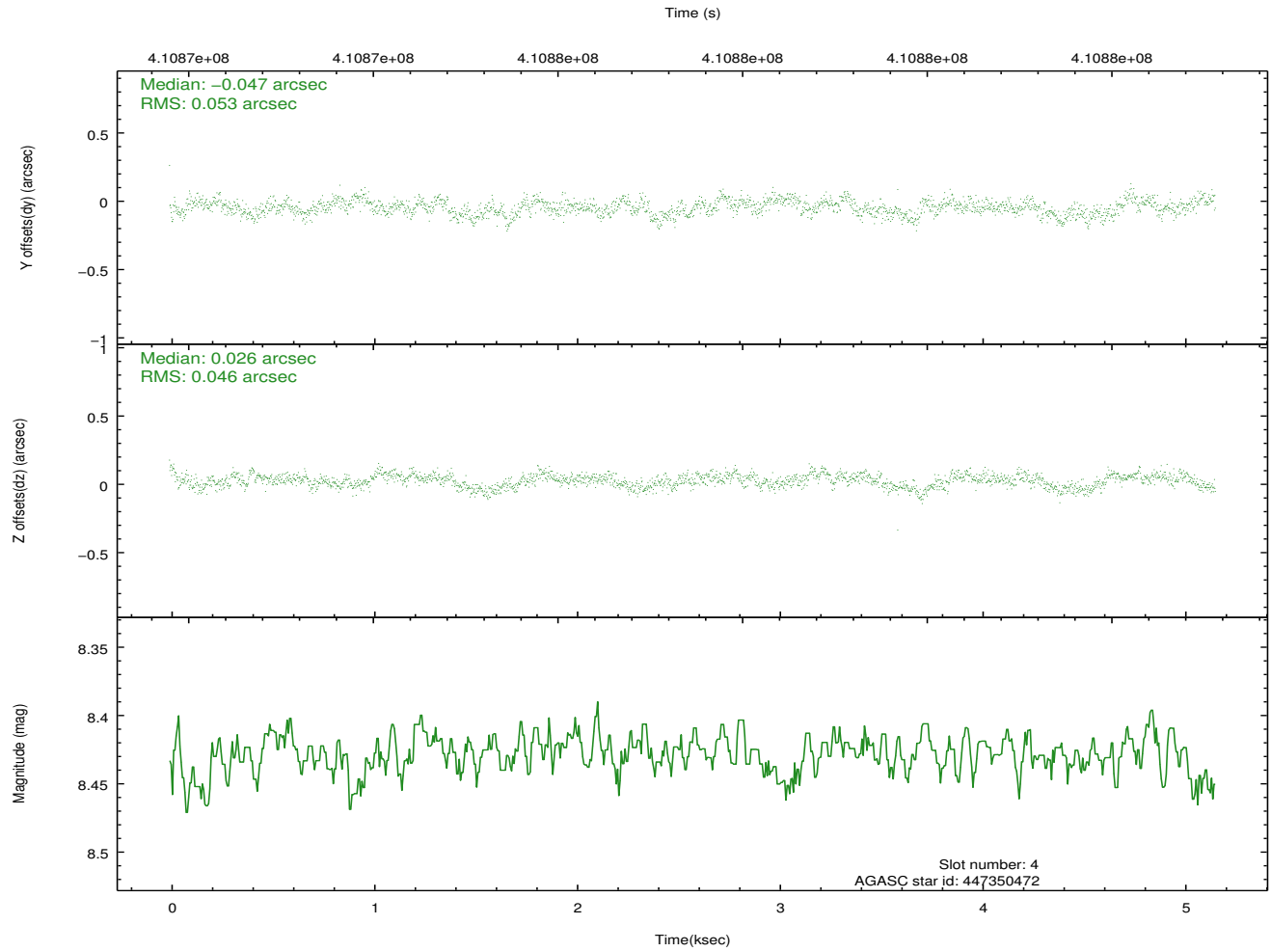
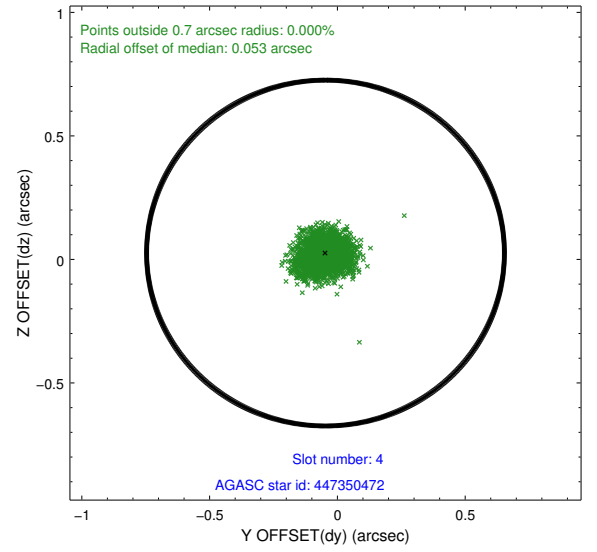
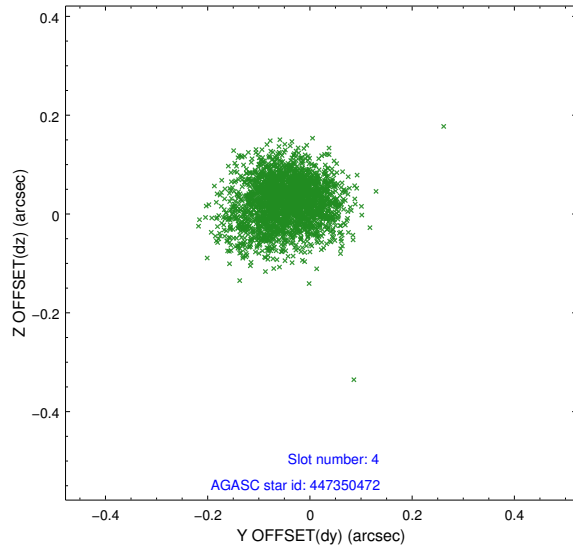
slot	status	id	mag	n_pts	med_dy	med_dz	dr1	dr2	ra	dec	mean_y	mean_z
0	FID	ACIS-I-2	6.96	1258	-0.066	-0.037	0.010	0.017	0.000000	0.000000	-770.02	-844.39
1	FID	ACIS-I-4	6.99	1258	0.156	0.053	0.007	0.011	0.000000	0.000000	2143.70	1061.30
2	FID	ACIS-I-5	7.05	1258	-0.191	0.053	0.010	0.016	0.000000	0.000000	-1822.48	1060.46
3	GUIDE	446960680	9.21	2513	-0.019	-0.237	0.111	0.181	117.783504	49.673801	-412.95	2013.90
4	GUIDE	447350472	8.43	2516	-0.047	0.026	0.074	0.122	117.609143	50.589633	929.13	-1022.88
5	GUIDE	447353208	8.89	2514	0.069	0.076	0.081	0.125	119.042506	50.540922	-2253.29	-1834.39
6	GUIDE	447353304	8.92	2516	0.015	0.259	0.089	0.139	118.758231	50.622547	-1543.44	-1916.44
7	GUIDE	446972480	7.78	2515	-0.019	-0.118	0.066	0.112	118.691329	49.784905	-2311.76	1003.39

2.4 Star Slots

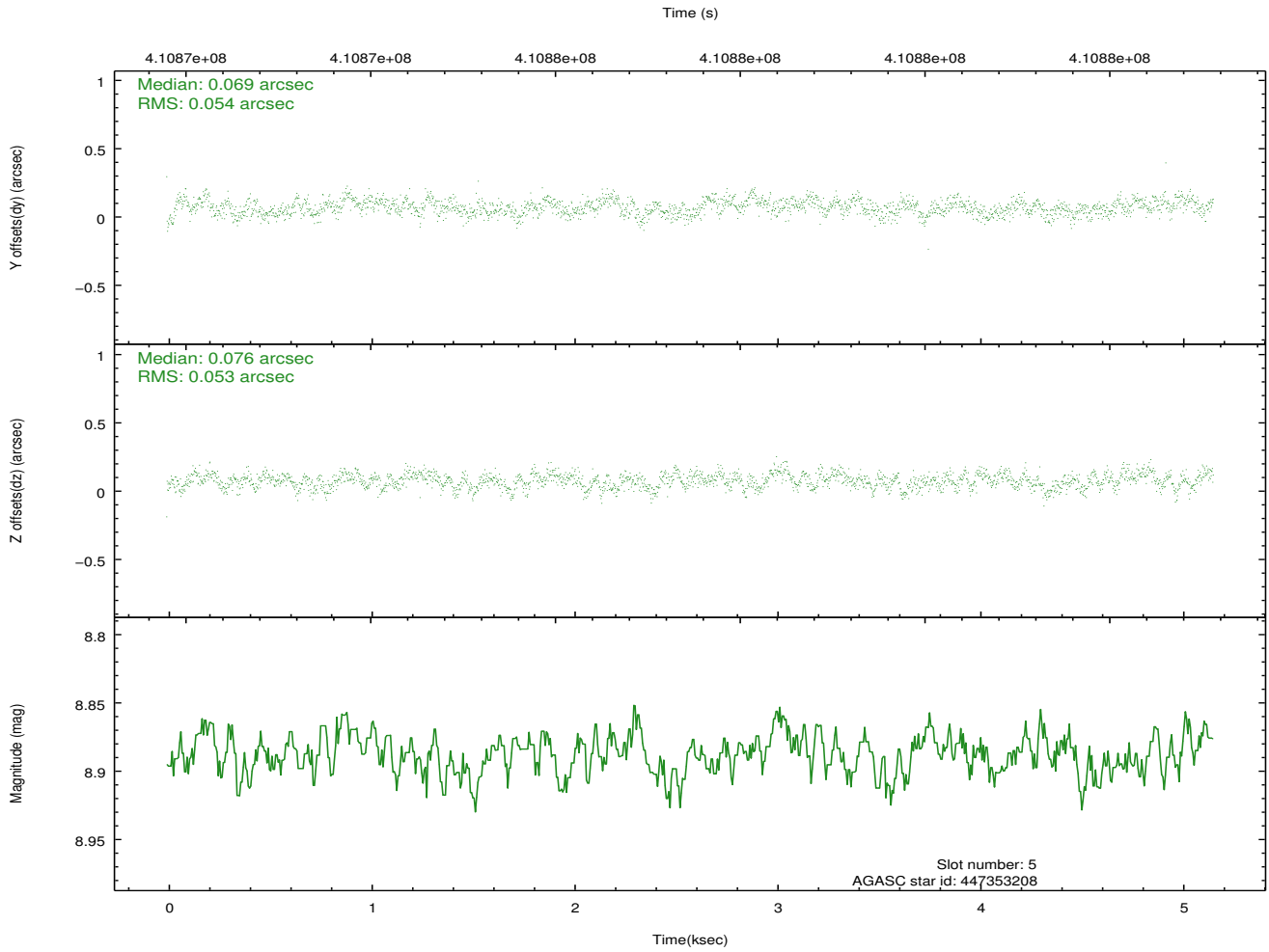
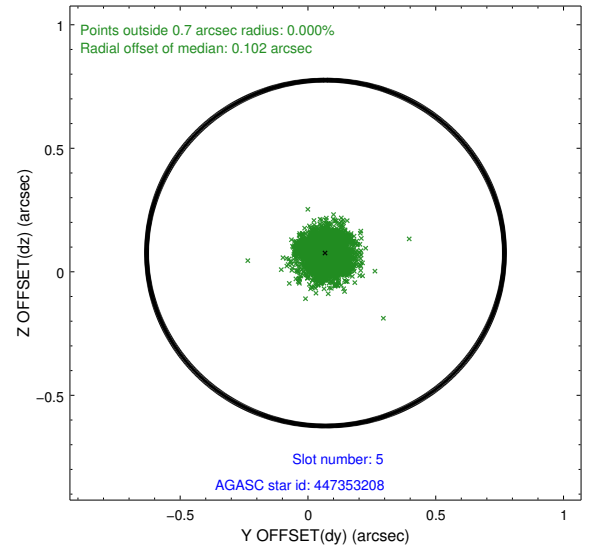
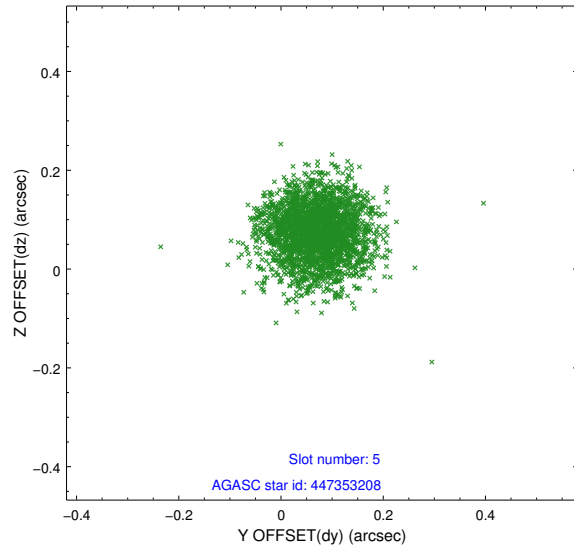
2.4.1 Slot 3



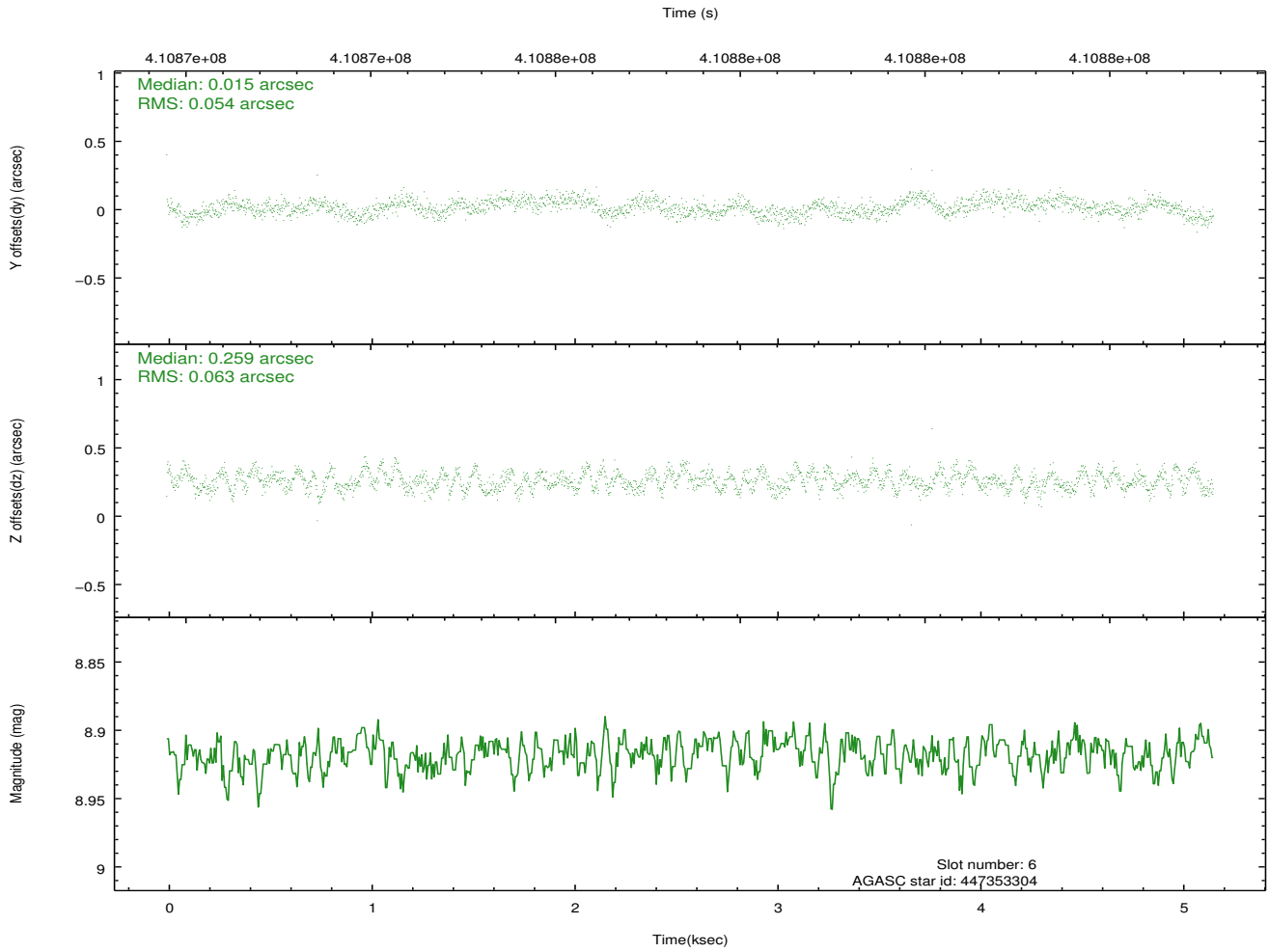
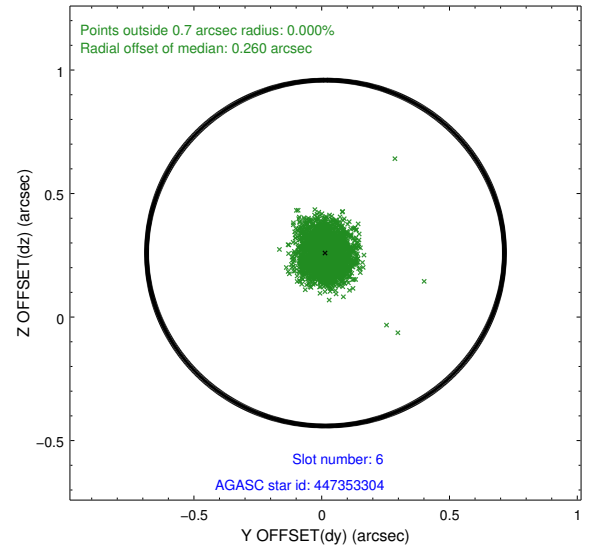
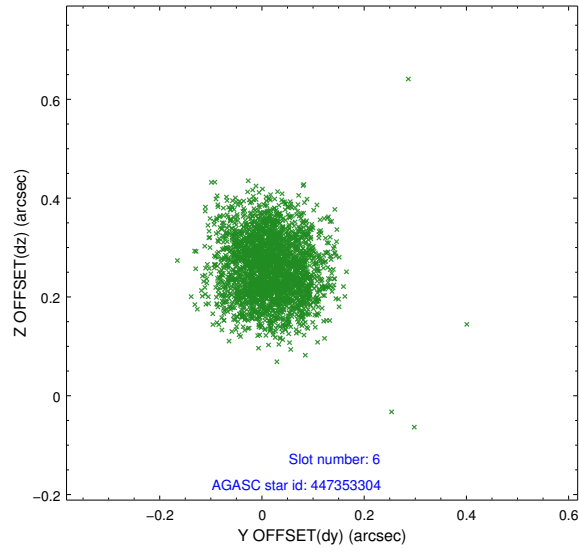
2.4.2 Slot 4



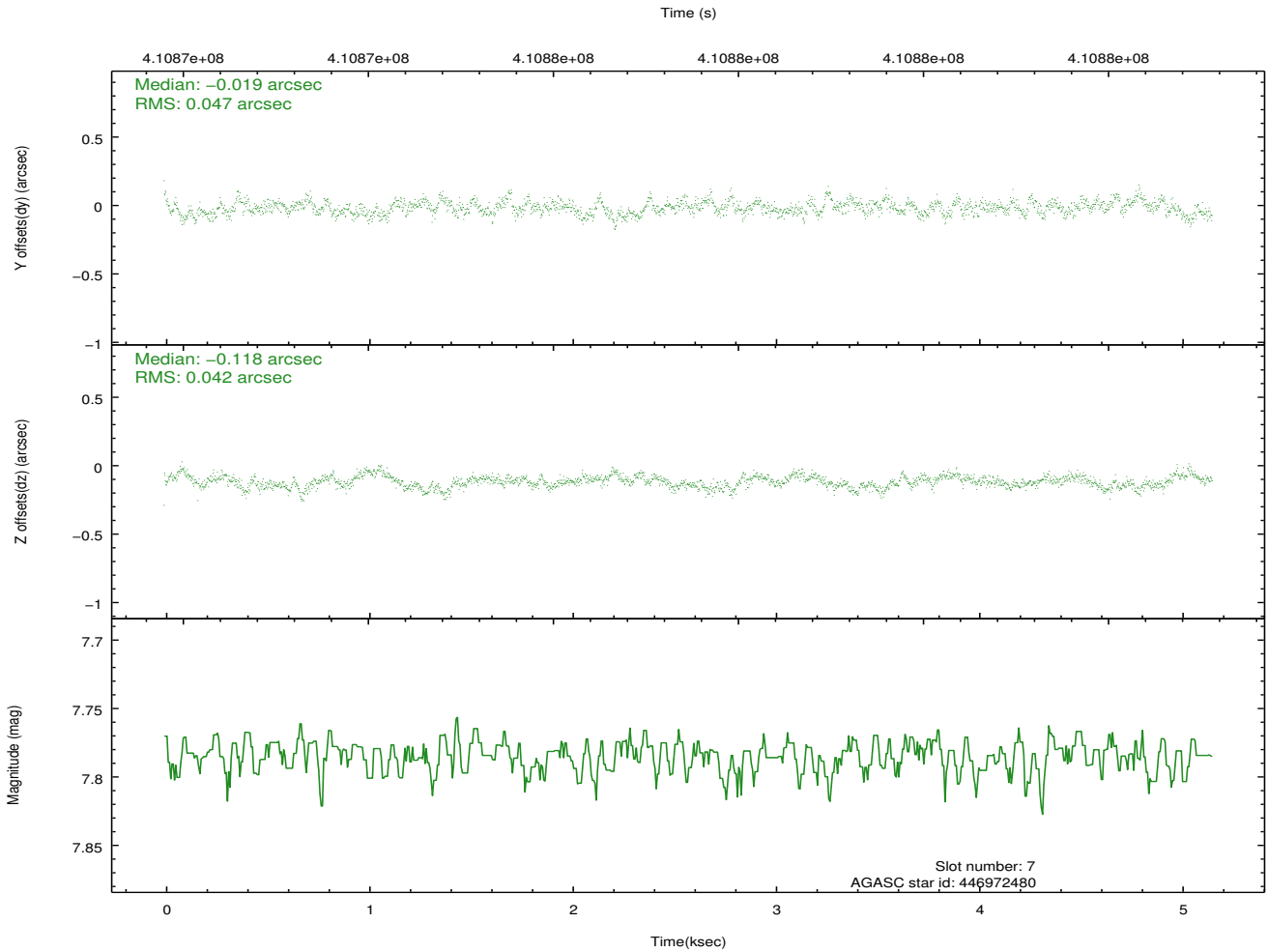
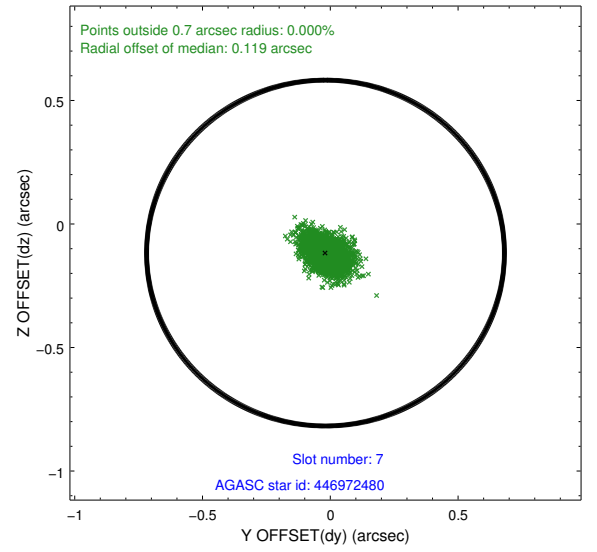
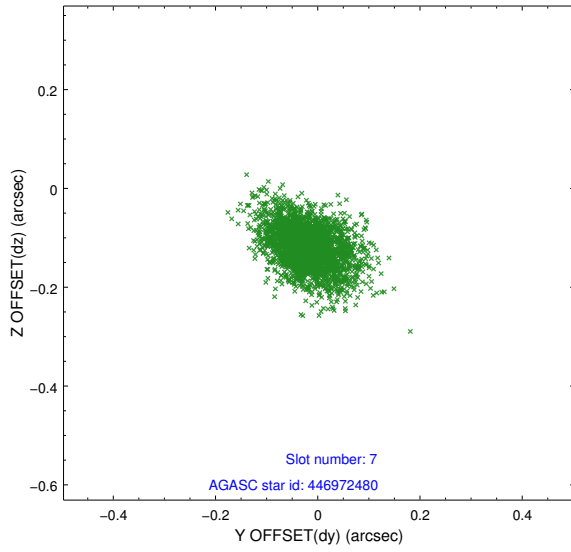
2.4.3 Slot 5



2.4.4 Slot 6

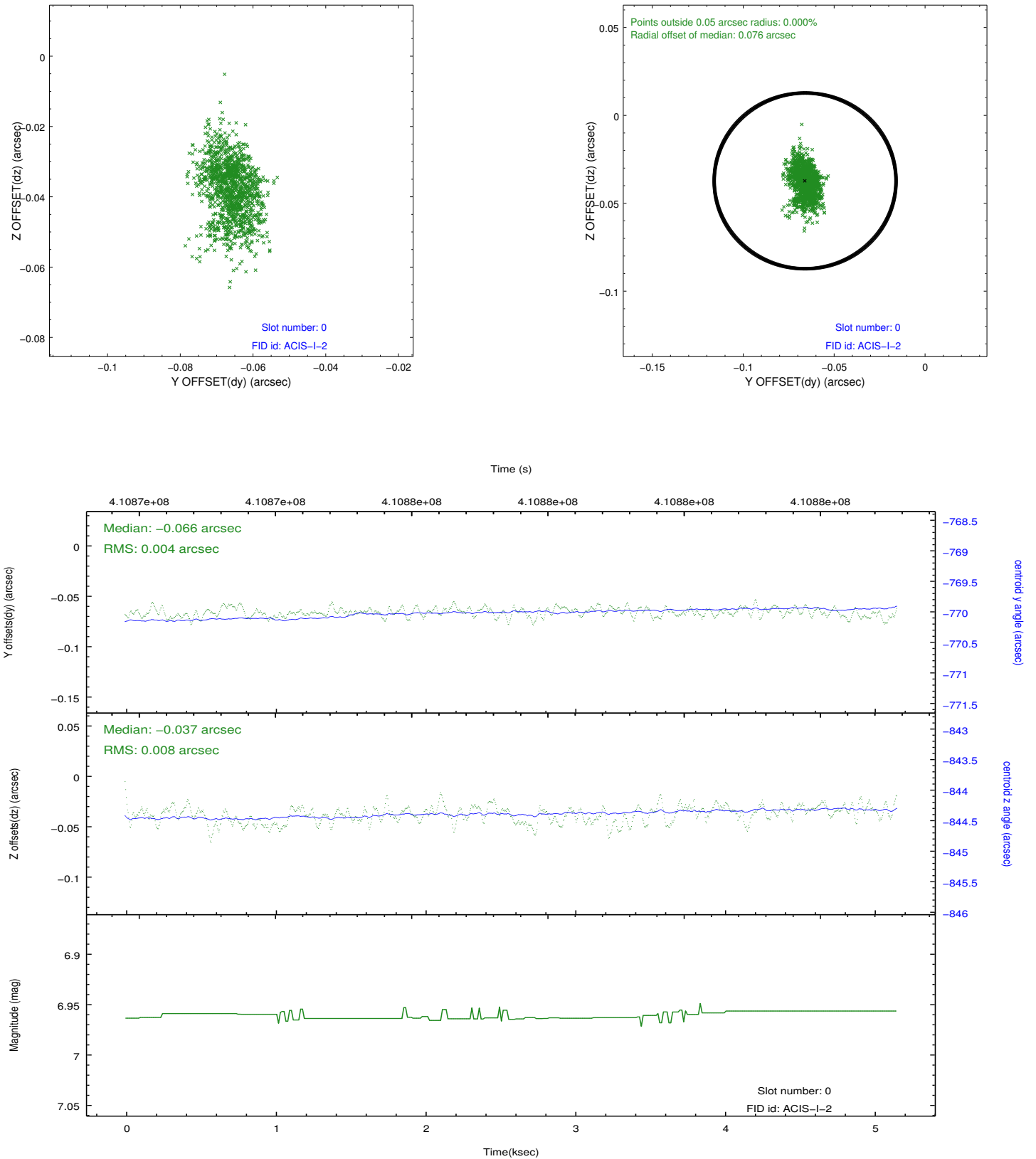


2.4.5 Slot 7

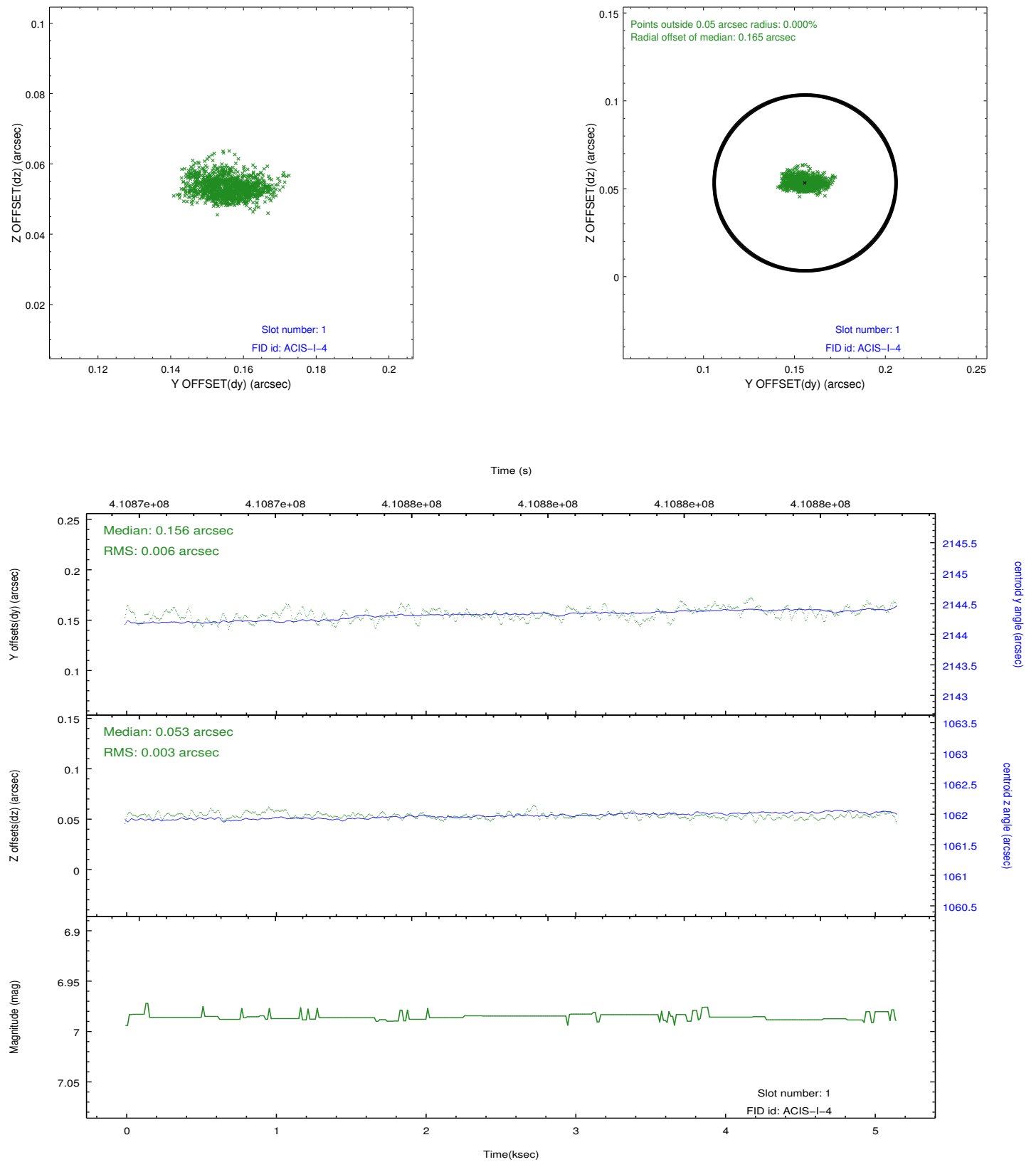


2.5 FID Slots

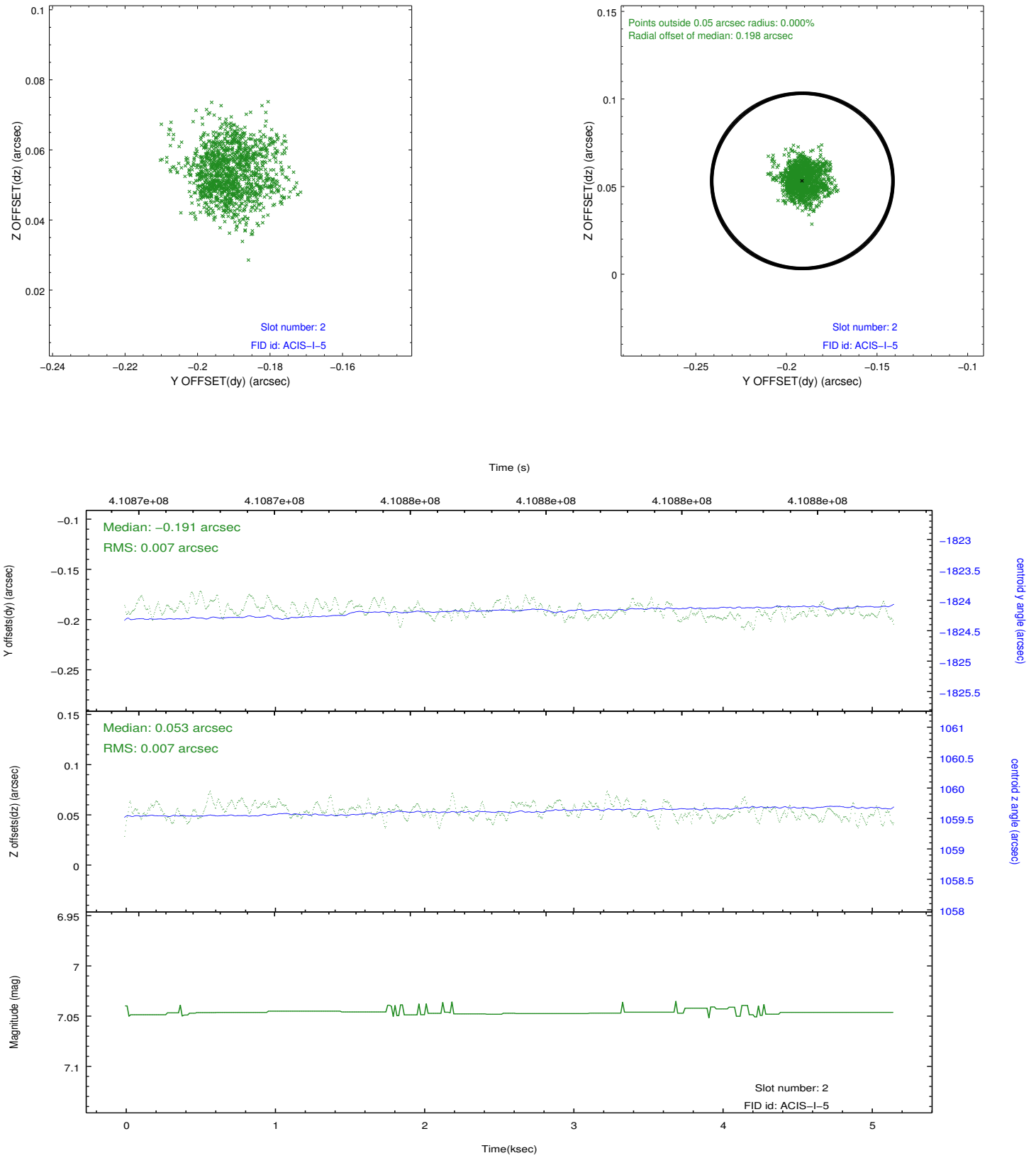
2.5.1 Slot 0



2.5.2 Slot 1



2.5.3 Slot 2



A Summary

A.1 Status

V&V Scientist	Beth Sundheim
V&V Date (YYYY-MM-DD)	2012.02.01
V&V Edition	1
V&V Disposition and Status	OK
V&V Charge Time	4.9631999815702

A.2 Comments

The data for this observation have been processed using the 'EDSER' sub-pixel event-repositioning algorithm of Li et al. (2004, ApJ, 610, 1204). Small-scale features should become sharper for sources near the aim point. The improvement will be less noticeable for off-axis sources where the size of the point-spread function is comparable to or larger than the size of an ACIS pixel. To take full advantage of the improvement, images should be binned on spatial scales smaller than the size of an ACIS pixel. Note that, at present, the point-spread function has not been calibrated for data to which the EDSER algorithm has been applied. If dither was disabled for the observation, then the algorithm can introduce artificial aliasing effects on spatial scales smaller than a pixel. If you would prefer to use no sub-pixel adjustment or to apply a coordinate randomization, then use `acis_process_events` to reprocess the data with the parameter `pix_adj=NONE` or `RANDOMIZE`, respectively.