

V&V Reference Report

L2 ASCDS Version : 8.4.3

Observation 12770 - L2 Version 2
Chandra X-Ray Center

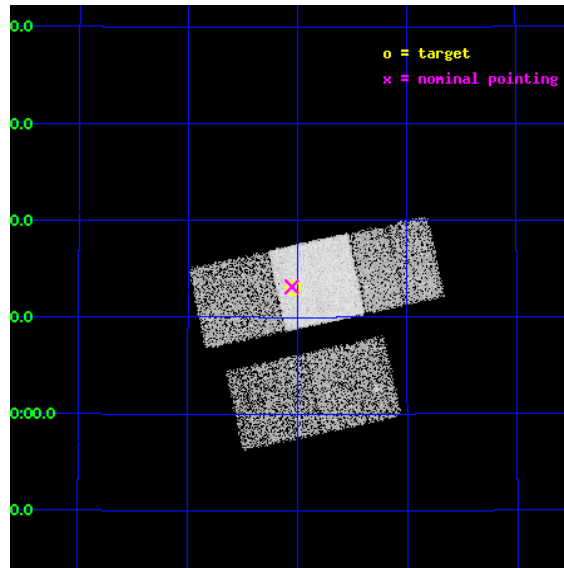
L2 Processing Date : Feb 26 2012

Contents

1	Front	2
2	OBI	3
2.1	OBI	3
2.1.1	Images	3
2.1.2	Bias	3
2.1.3	Parameters	4
2.1.4	Events	4
2.2	Compared Parameters	5
2.3	Aspect	6
2.4	Star Slots	9
2.4.1	Slot 3	9
2.4.2	Slot 4	10
2.4.3	Slot 5	11
2.4.4	Slot 6	12
2.4.5	Slot 7	13
2.5	FID Slots	14
2.5.1	Slot 0	14
2.5.2	Slot 1	15
2.5.3	Slot 2	16
A	Summary	17
A.1	Status	17
A.2	Comments	17

1 Front

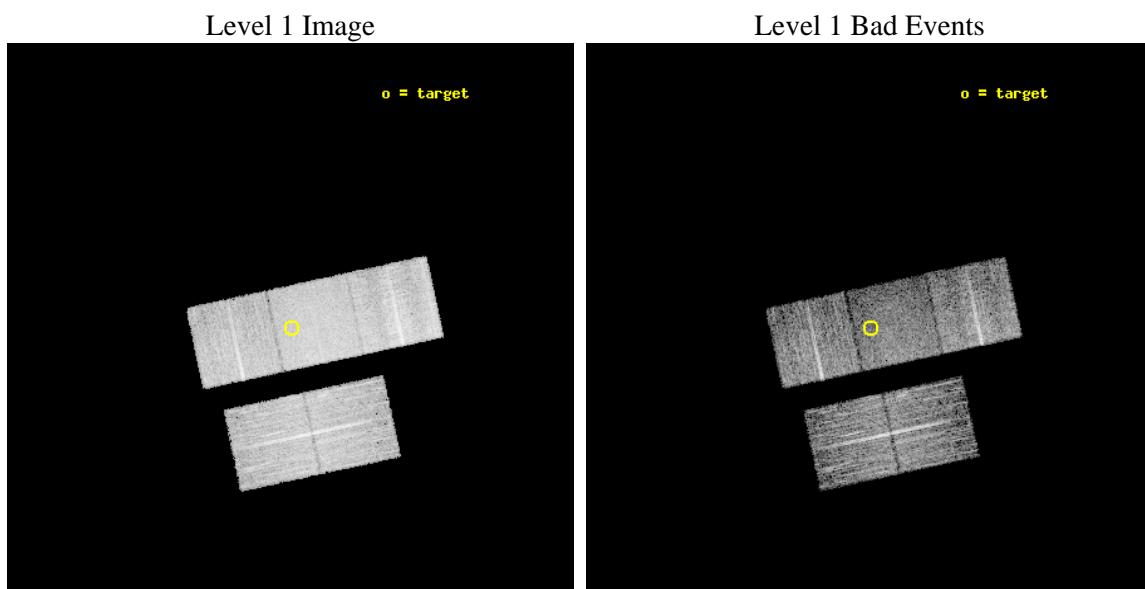
seq_num	702406	Sequence number
obs_id	12770	Observation id
title	X-ray Properties of 2MASS Selected BALQSOs	Proposal title
observer	Dr. Xinyu Dai	Principal investigator
object	SDSSJ160202.39+401301.3	Source name
dtcycle	0	
cycle	P	events from which exps? Prim/Second/Both
ra_targ	240.51	Observer's specified target RA [deg]
dec_targ	40.217028	Observer's specified target Dec [deg]
ra_nom	240.51282850969	Nominal RA [deg]
dec_nom	40.219153404203	Nominal Dec [deg]
roll_nom	347.81460781353	Nominal Roll [deg]
revision	2	Processing version of data
ontime	9039.6000695229	Sum of GTIs [s]
livetime	8921.4910397578	Livetime [s]
ontime2	9036.459079206	Sum of GTIs [s]
ontime3	9033.3181487322	Sum of GTIs [s]
ontime6	9039.6000695229	Sum of GTIs [s]
ontime7	9039.6000695229	Sum of GTIs [s]
ontime8	9039.6000695229	Sum of GTIs [s]
l2events	54128	Number of level 2 events



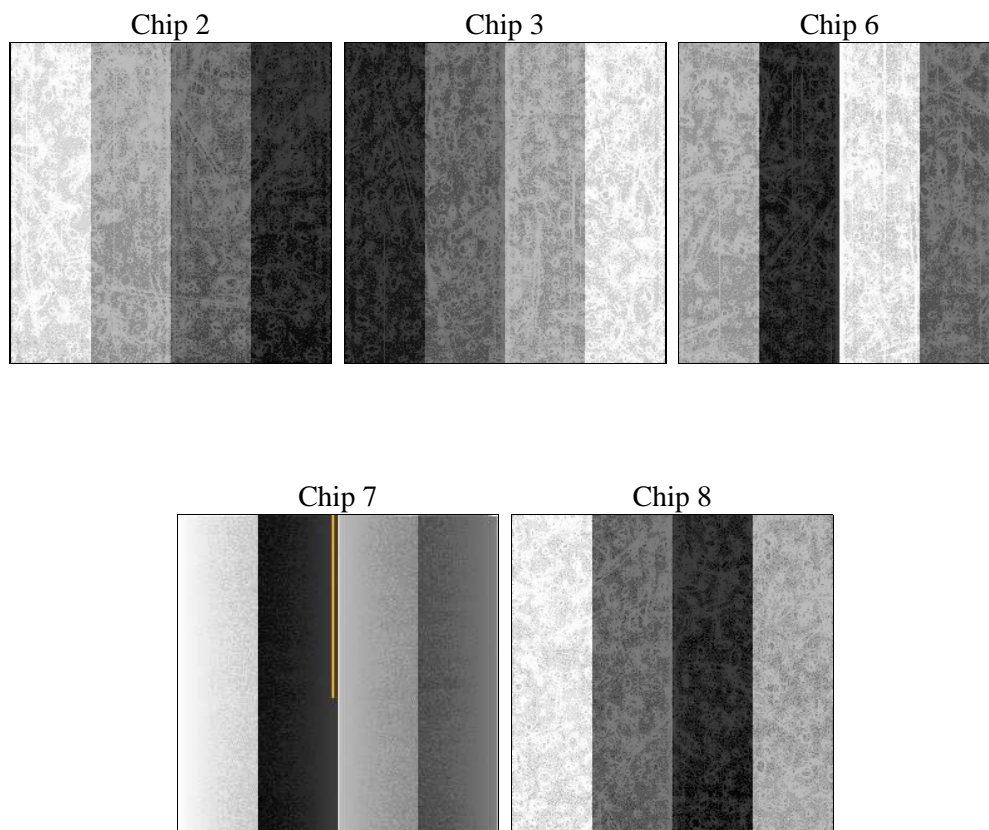
2 OBI

2.1 OBI

2.1.1 Images



2.1.2 Bias



2.1.3 Parameters

obi_num	0	Obi number	sched_exp_time	9000.000000	[s] Scheduled observation exposure time
ascdsver	8.4.3	Processing system revision	ontime	9039.6000695229	Sum of GTIs [s]
caldsver	4.4.8	 	ontime2	9036.459079206	Sum of GTIs [s]
date	2012-02-26T15:21:01	Date and time of file creation	ontime3	9033.3181487322	Sum of GTIs [s]
revision	2	Processing version of data	ontime6	9039.6000695229	Sum of GTIs [s]
			ontime7	9039.6000695229	Sum of GTIs [s]
			ontime8	9039.6000695229	Sum of GTIs [s]
			l1events	314454	Number of level 1 events

2.1.4 Events

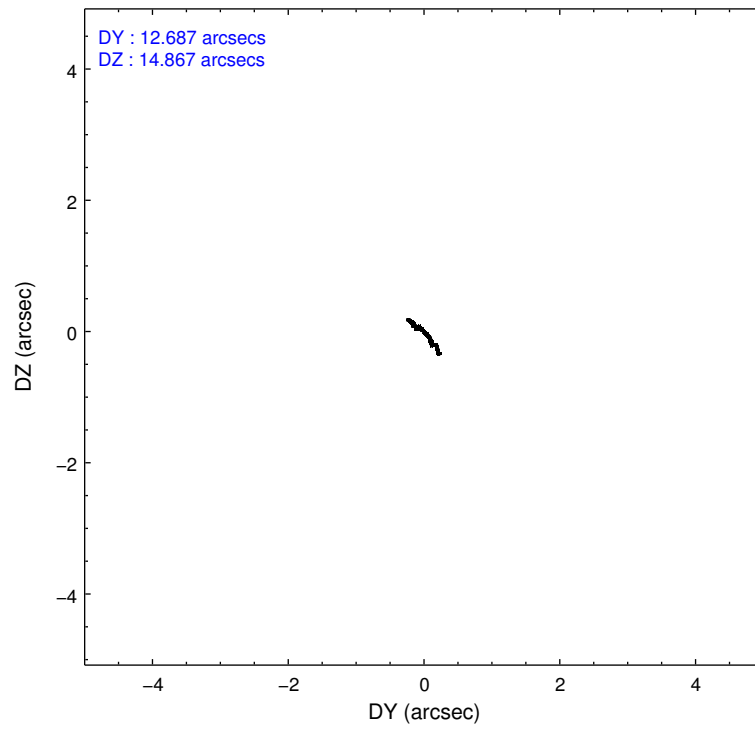
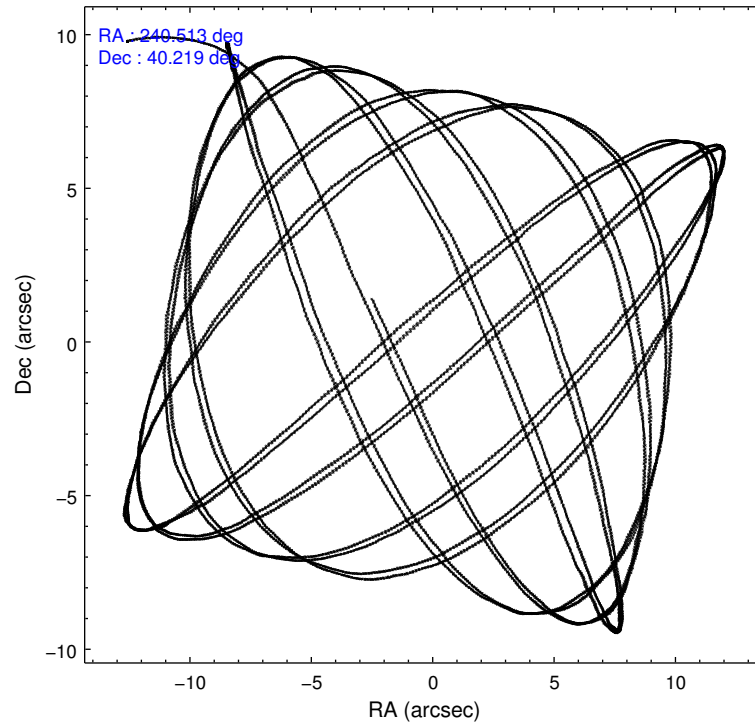
	ccd 2	ccd 3	ccd 6	ccd 7	ccd 8
level 1 events	56301	54826	56289	72589	74449
rejected events	50281	48939	49661	40471	54949
rejected %	89%	89%	88%	55%	73%

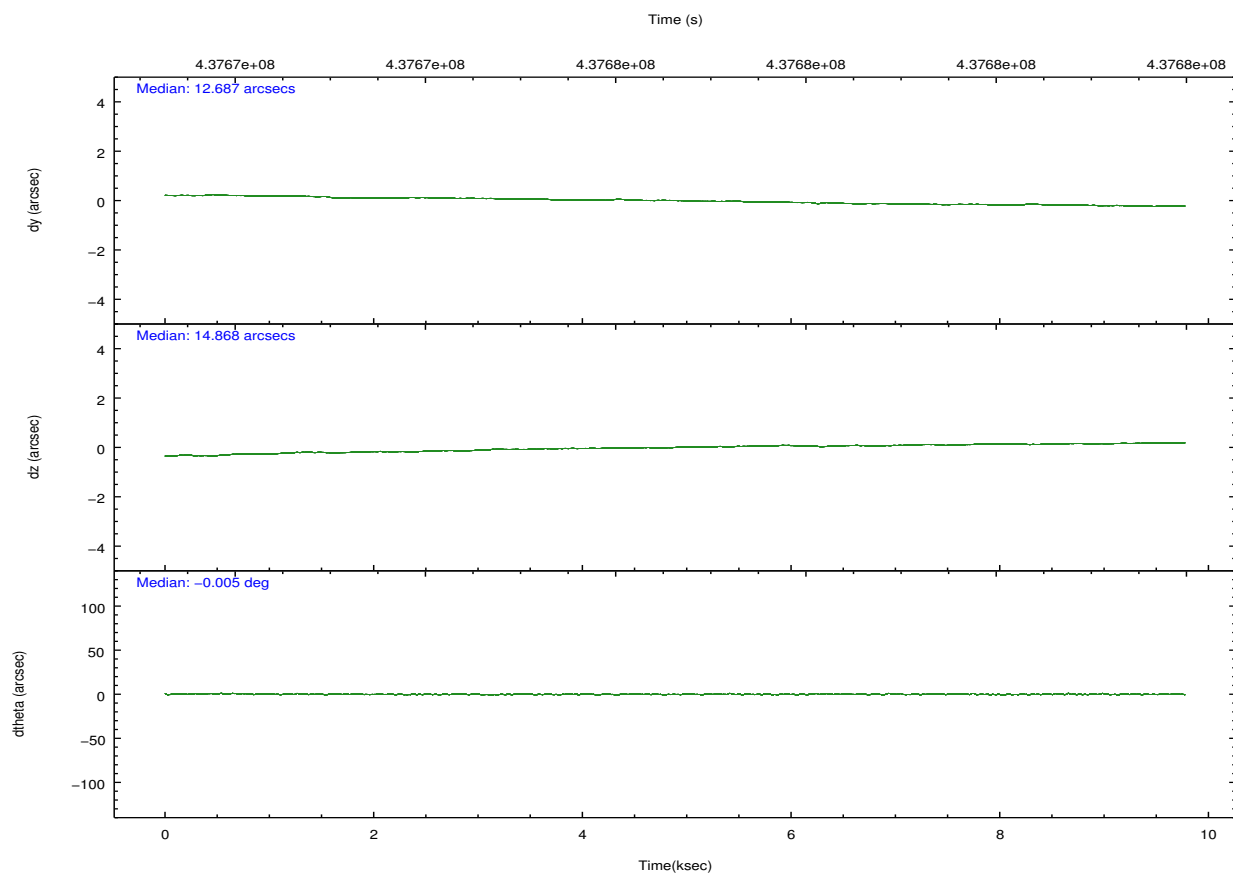
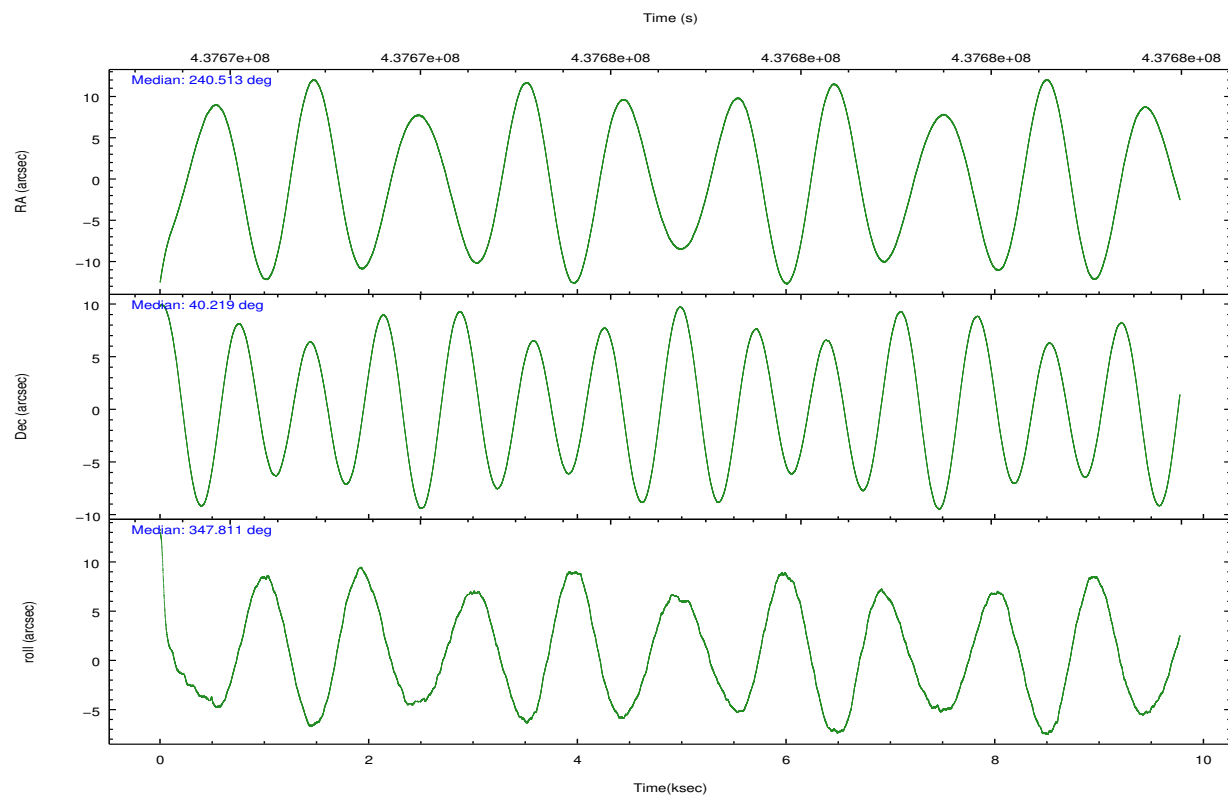
	ccd 2	ccd 3	ccd 6	ccd 7	ccd 8
grade 0 events	2048	2032	2236	3025	5926
	3%	3%	3%	4%	7%
grade 1 events	24	35	34	85	67
	0%	0%	0%	0%	0%
grade 2 events	1473	1332	1479	6557	4547
	2%	2%	2%	9%	6%
grade 3 events	621	635	690	2712	2061
	1%	1%	1%	3%	2%
grade 4 events	654	652	660	2795	1947
	1%	1%	1%	3%	2%
grade 5 events	2184	2715	2759	7516	4036
	3%	4%	4%	10%	5%
grade 6 events	1228	1246	1567	17047	5030
	2%	2%	2%	23%	6%
grade 7 events	48069	46179	46864	32852	50835
	85%	84%	83%	45%	68%

2.2 Compared Parameters

Parameter	Planned	Actual	Parameter	Planned	Actual
Instrument	ACIS	ACIS	Obspar format version number	7	7
Detector	ACIS-23678	ACIS-23678	Obspar file type	PREDICTED	ACTUAL
Grating	NONE	NONE	Obspar update status	NONE	UPDATED
Data mode	VFAINT	VFAINT	CCD I0 on	N	N
Observation mode	POINTING	POINTING	CCD I1 on	N	N
[deg] Pointing RA	240.478859	240.5128285096906	CCD I2 on	O4	Y
[deg] Pointing Dec	40.210458	40.21915340420311	CCD I3 on	O3	Y
[deg] Pointing Roll	347.679917	347.8146078135254	CCD S0 on	N	N
[mm] SIM focus pos	-0.684267	-0.6828225247311905	CCD S1 on	N	N
[mm] SIM defocus	0	0.001444936568705701	CCD S2 on	O2	Y
[mm] SIM translation stage pos	-190.132523	-190.1425803651734	CCD S3 on	Y	Y
[mm] SIM translation stage offset	0	0.01005778216563158	CCD S4 on	O1	Y
[s] Observation start time (MET)	437672518.184000	437671296.04249	CCD S5 on	N	N
Observation start date	2011-11-14T15:40:52	2011-11-14T15:21:36	Number of optional ACIS chips dropped	0	0
[s] Observation end time (MET)	437681518.184000	437682134.90556	On-chip summing requested	N	N
Observation end date	2011-11-14T18:10:52	2011-11-14T18:22:14	Subarray requested	NONE	NONE
Read mode	TIMED	TIMED	Alternating exposures requested	N	N
			[s] Primary exposure time	0.000000	3.1

2.3 Aspect



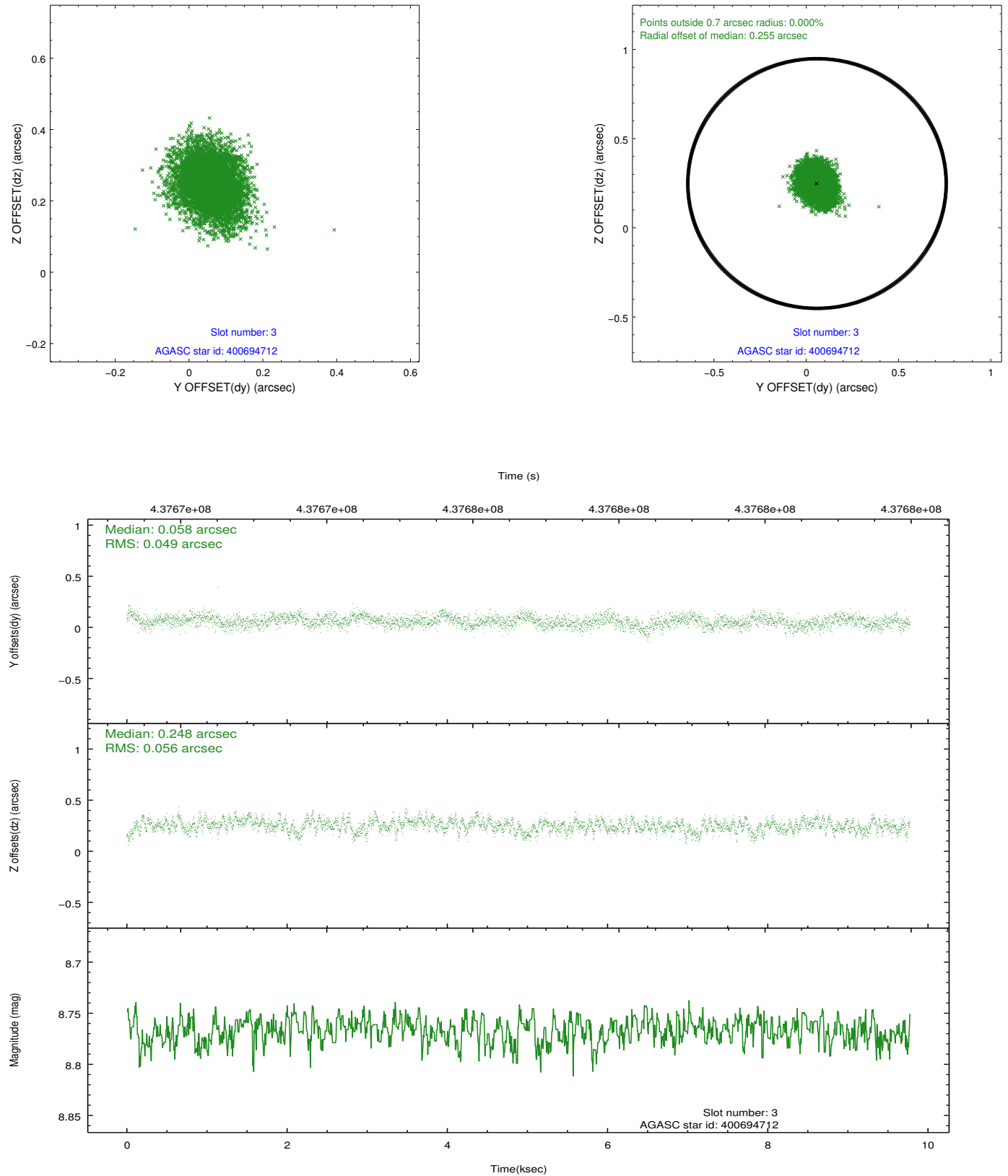


Slot Statistics

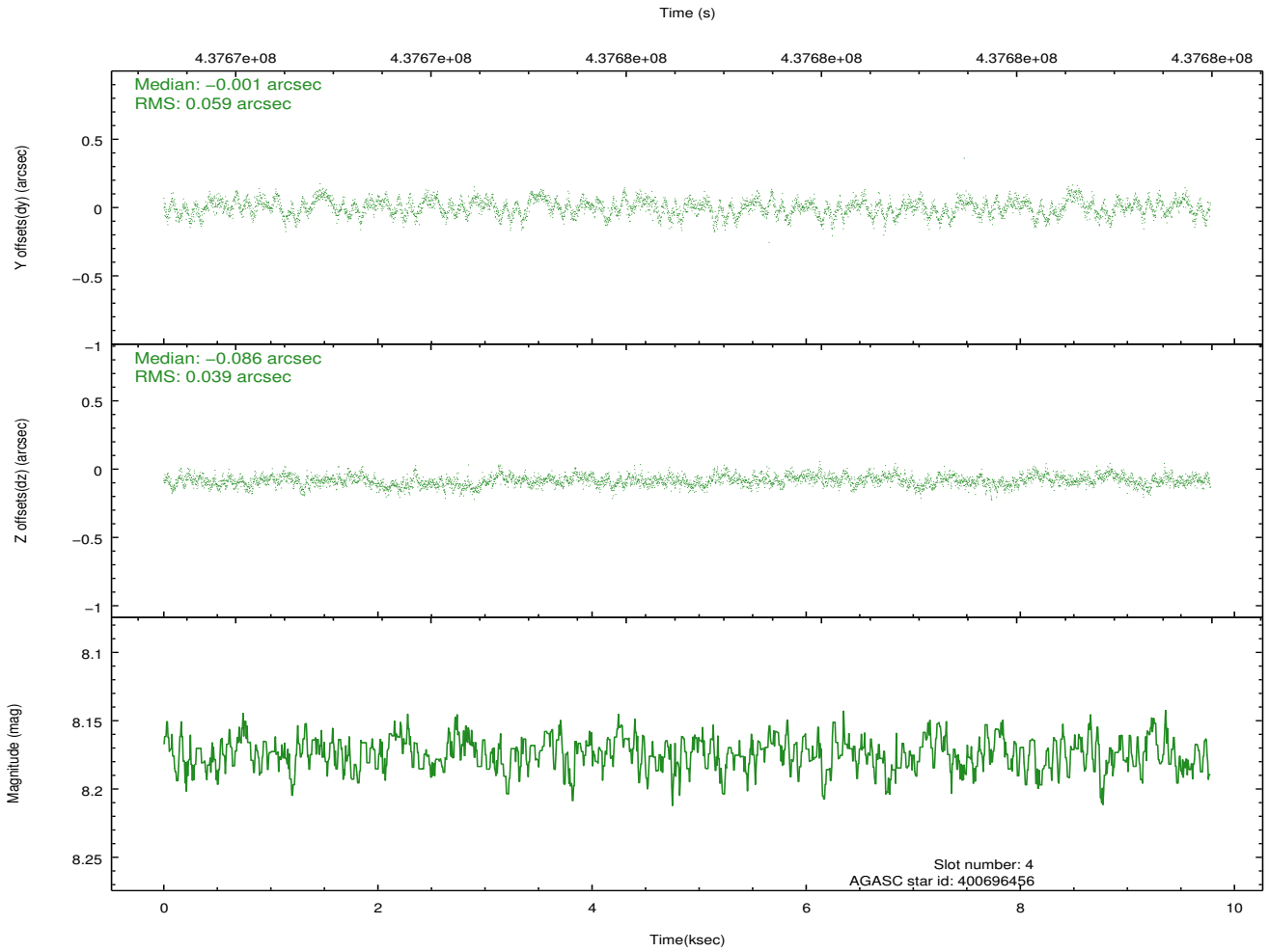
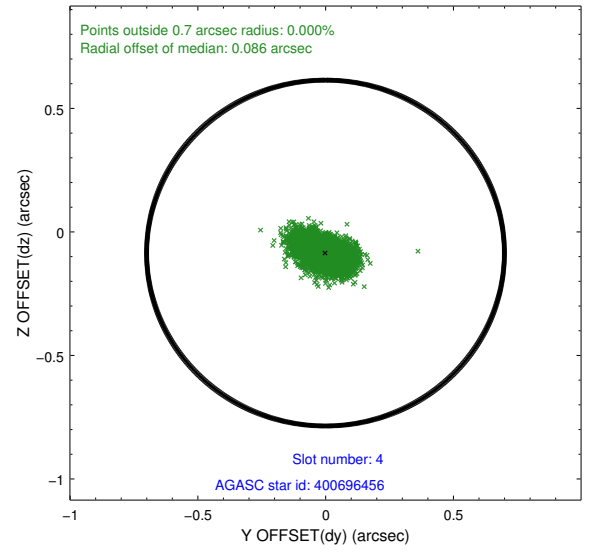
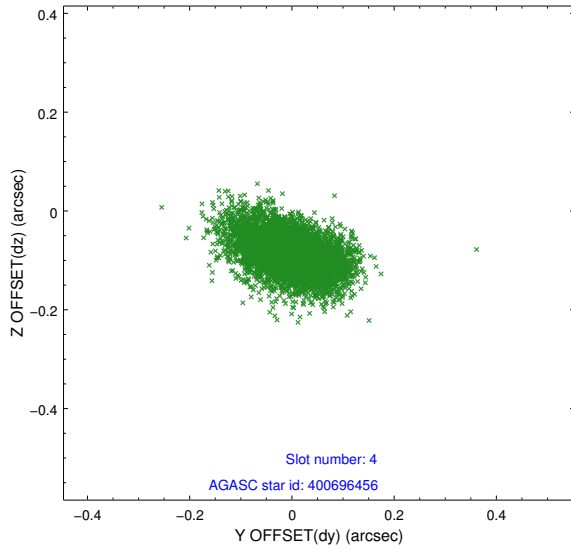
slot	status	id	mag	n_pts	med_dy	med_dz	dr1	dr2	ra	dec	mean_y	mean_z
0	FID	ACIS-S-2	6.94	2384	-0.056	-0.026	0.008	0.012	0.000000	0.000000	-765.62	-1736.20
1	FID	ACIS-S-4	7.03	2384	0.207	0.034	0.007	0.013	0.000000	0.000000	2147.65	171.81
2	FID	ACIS-S-5	7.06	2383	-0.182	0.001	0.008	0.014	0.000000	0.000000	-1817.90	166.03
3	GUIDE	400694712	8.77	4763	0.058	0.248	0.079	0.130	239.852587	40.150484	-1638.87	-572.10
4	GUIDE	400696456	8.17	4769	-0.001	-0.086	0.074	0.125	239.985643	40.893125	-1837.21	2118.39
5	GUIDE	401615952	6.57	4769	-0.069	0.158	0.072	0.118	240.508708	40.022847	223.51	-641.20
6	GUIDE	401616120	7.98	4705	-0.220	-0.217	0.072	0.114	241.215605	40.750610	1546.48	2336.44
7	GUIDE	401617272	9.37	4765	0.233	-0.107	0.134	0.232	240.254334	40.294545	-666.62	165.67

2.4 Star Slots

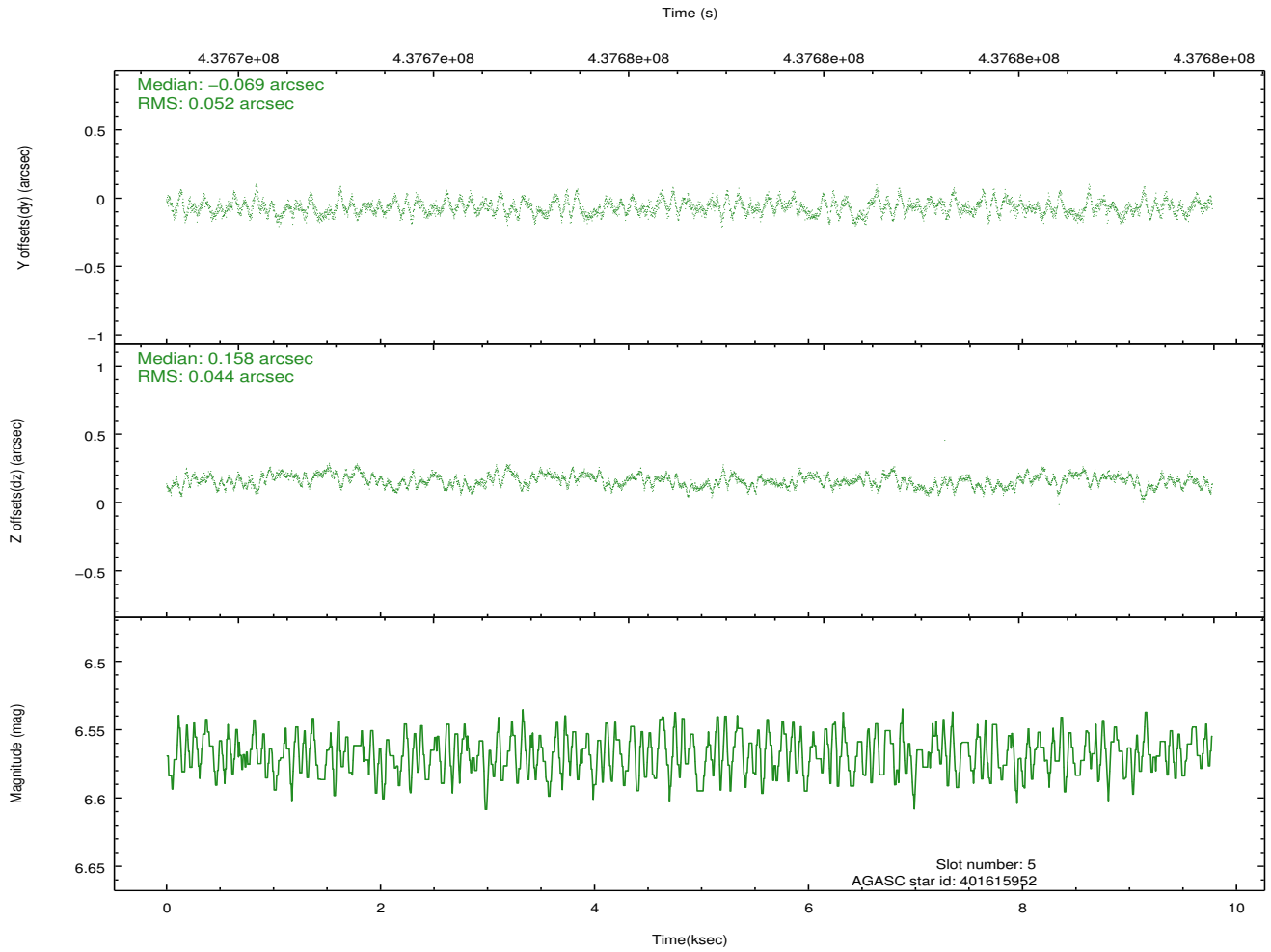
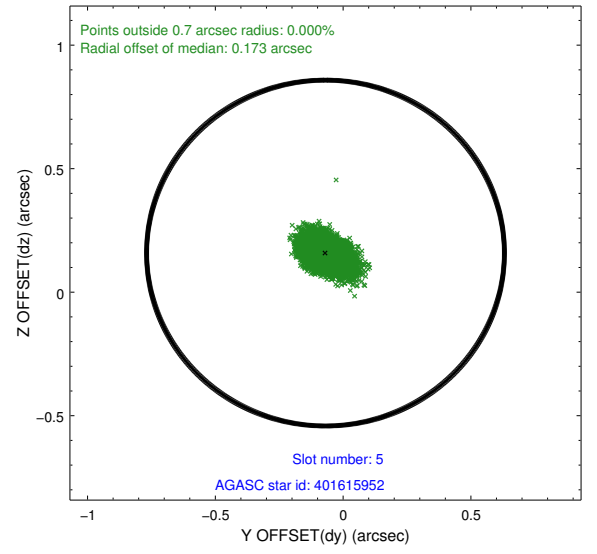
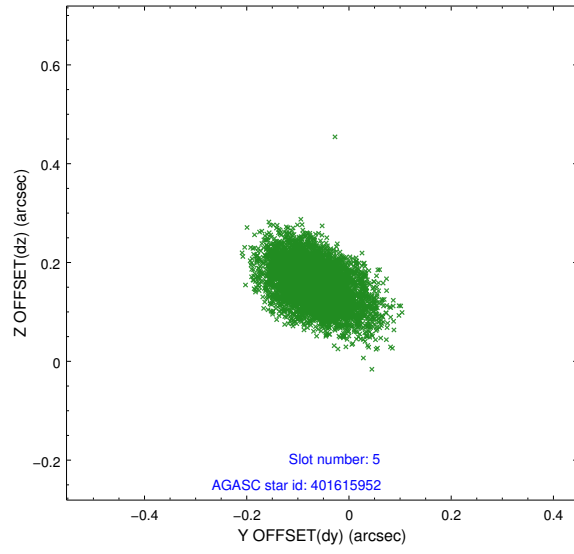
2.4.1 Slot 3



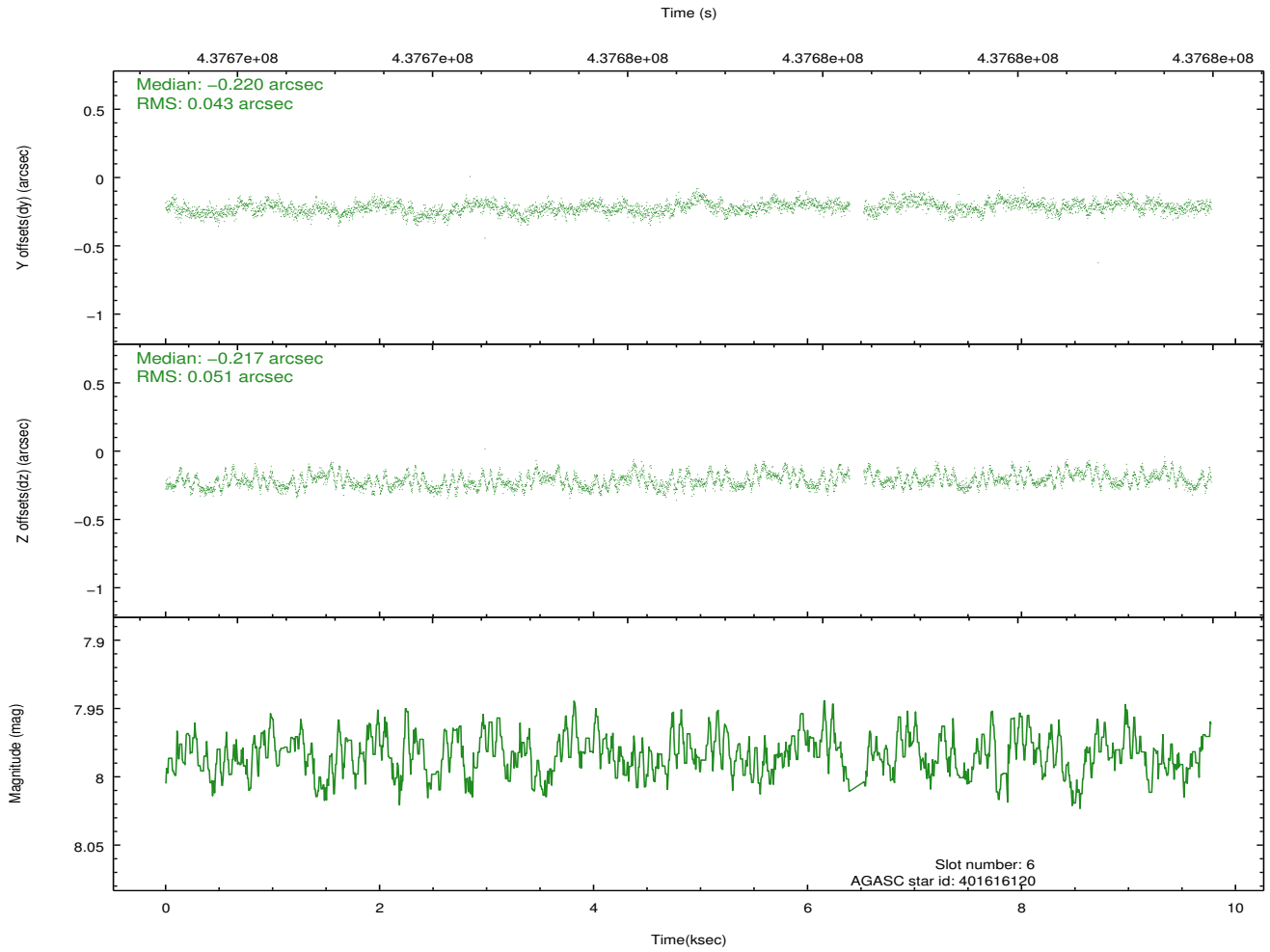
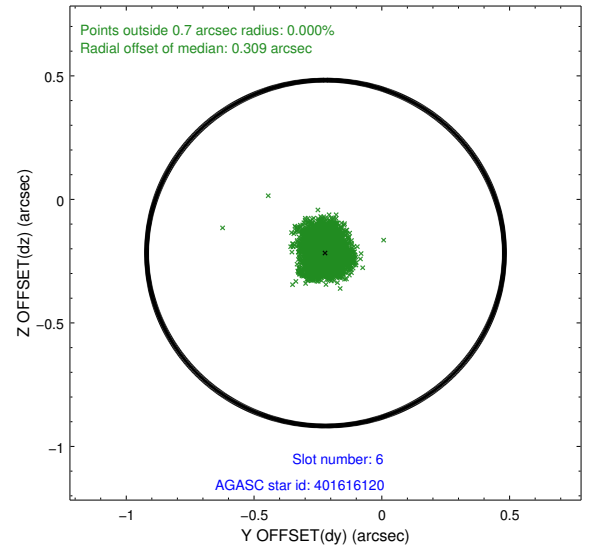
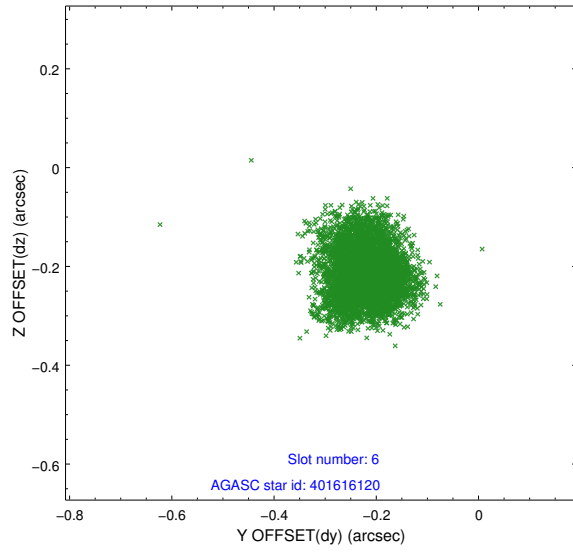
2.4.2 Slot 4



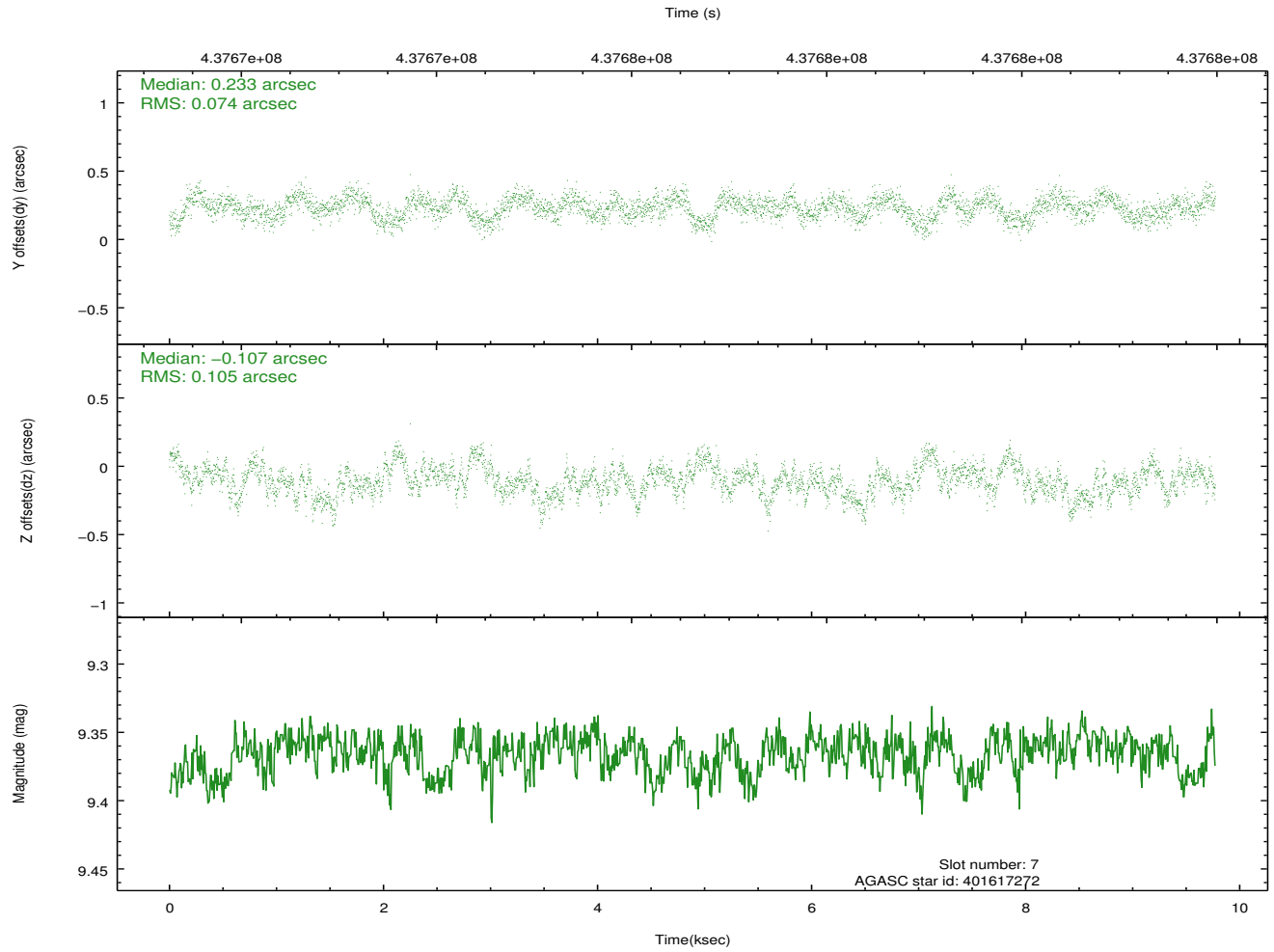
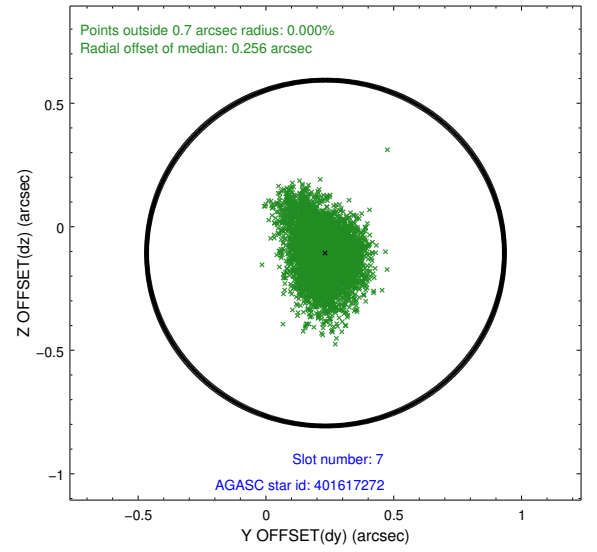
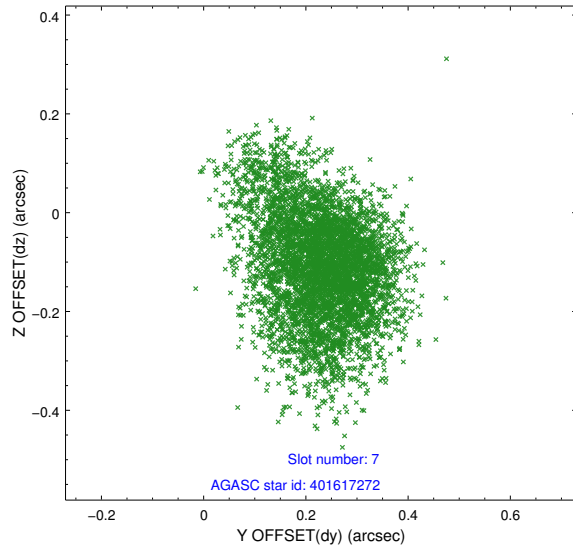
2.4.3 Slot 5



2.4.4 Slot 6

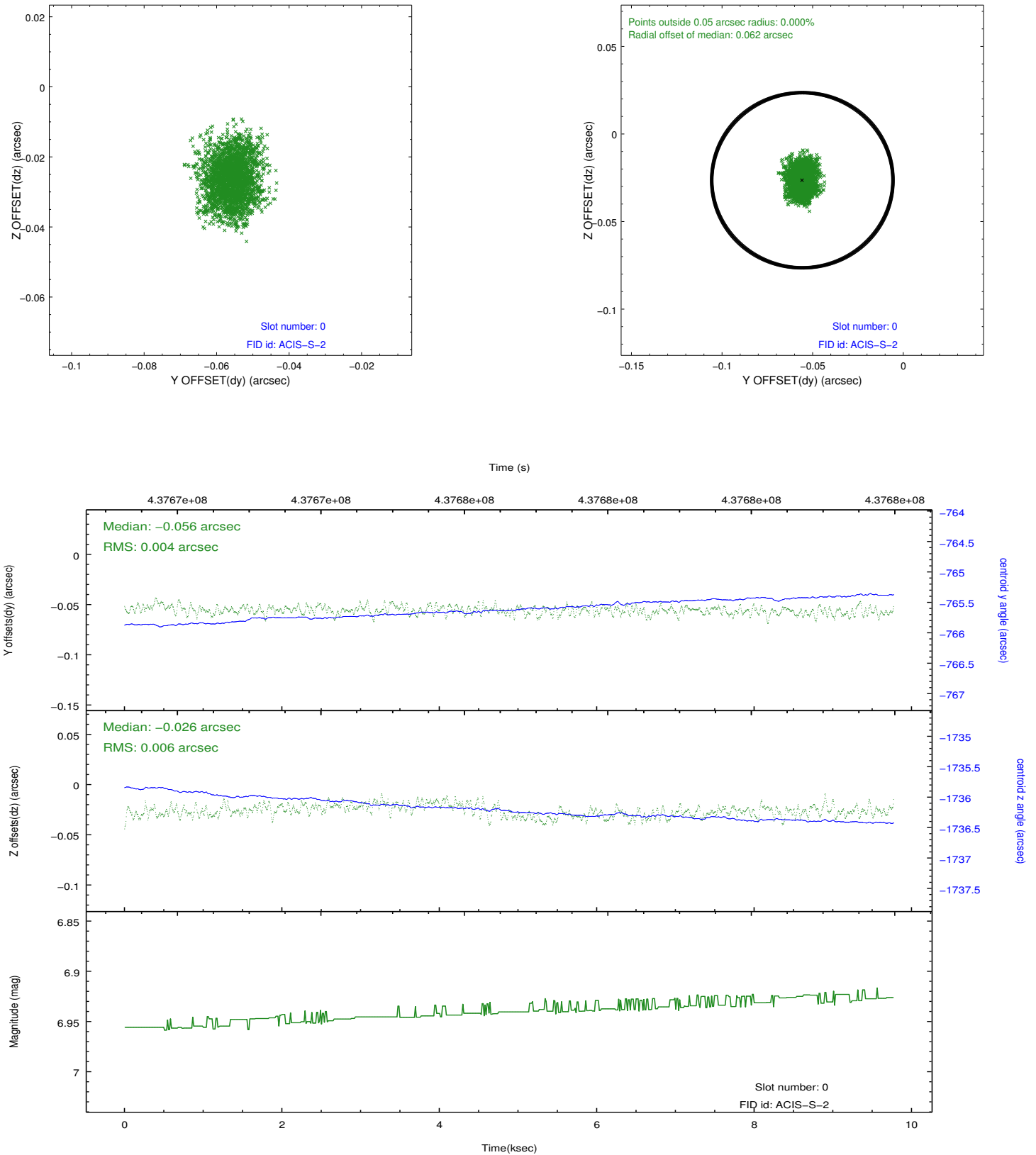


2.4.5 Slot 7

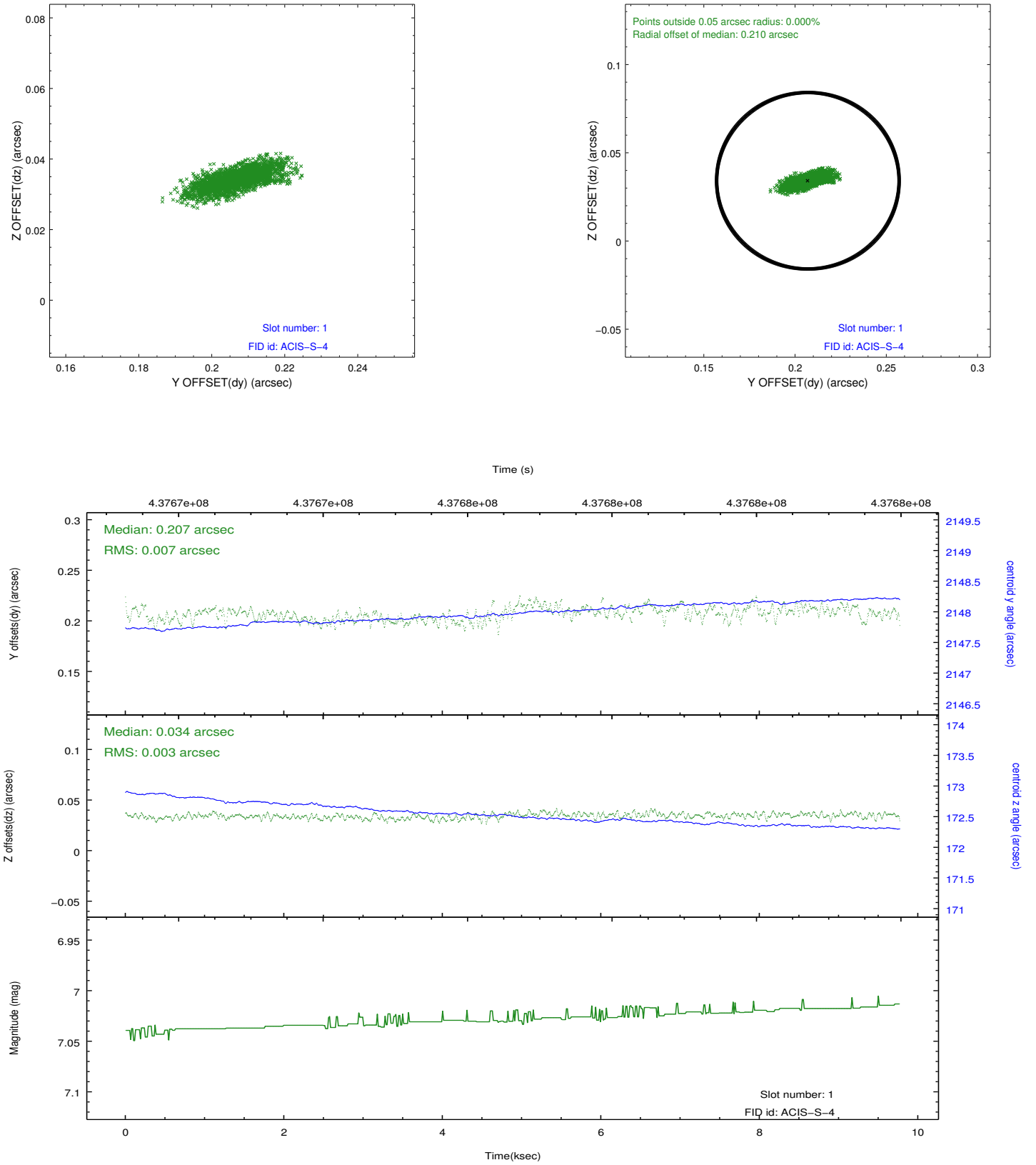


2.5 FID Slots

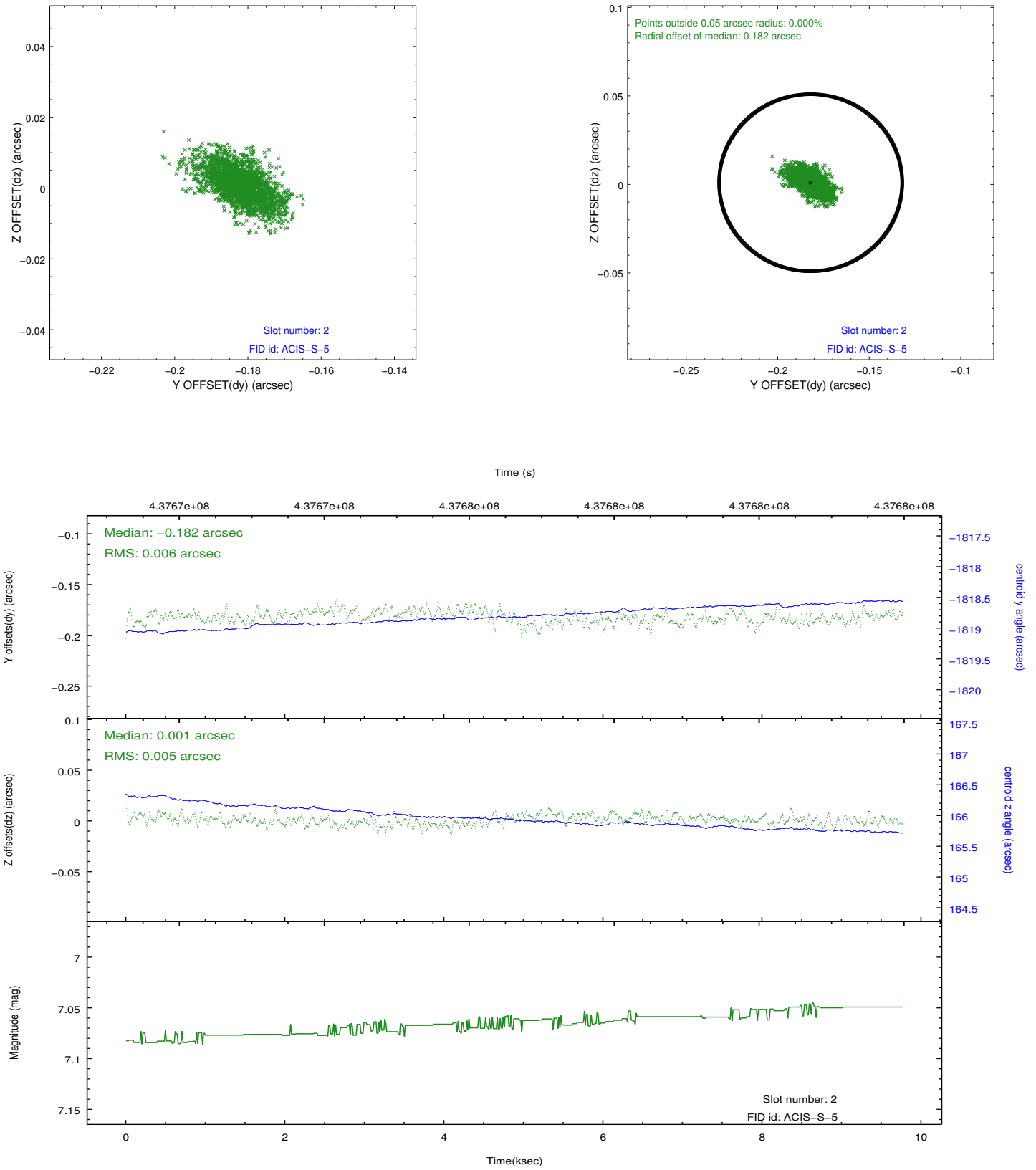
2.5.1 Slot 0



2.5.2 Slot 1



2.5.3 Slot 2



A Summary

A.1 Status

V&V Scientist	Jen Lauer
V&V Date (YYYY-MM-DD)	2012.02.28
V&V Edition	1
V&V Disposition and Status	OK
V&V Charge Time	9.0396000695229

A.2 Comments