

V&V Reference Report

L2 ASCDS Version : 8.4.3

Observation 12731 - L2 Version 1
Chandra X-Ray Center

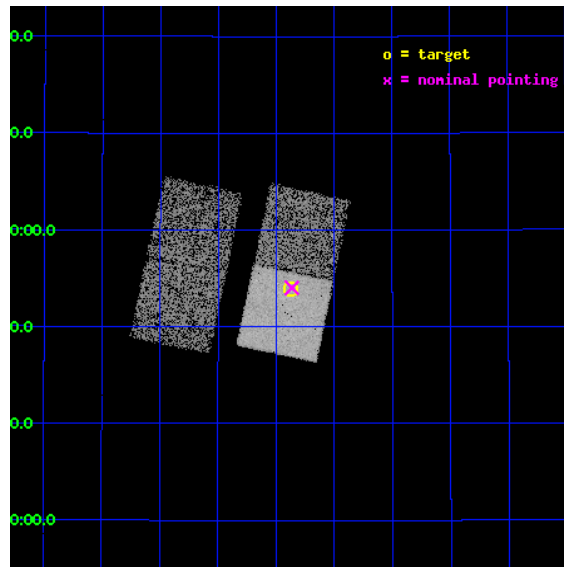
L2 Processing Date : Jan 7 2012

Contents

1	Front	2
2	OBI	3
2.1	OBI	3
2.1.1	Images	3
2.1.2	Bias	3
2.1.3	Parameters	4
2.1.4	Events	4
2.2	Compared Parameters	5
2.3	Aspect	6
2.4	Star Slots	9
2.4.1	Slot 3	9
2.4.2	Slot 4	10
2.4.3	Slot 5	11
2.4.4	Slot 6	12
2.4.5	Slot 7	13
2.5	FID Slots	14
2.5.1	Slot 0	14
2.5.2	Slot 1	15
2.5.3	Slot 2	16
A	Summary	17
A.1	Status	17
A.2	Comments	17

1 Front

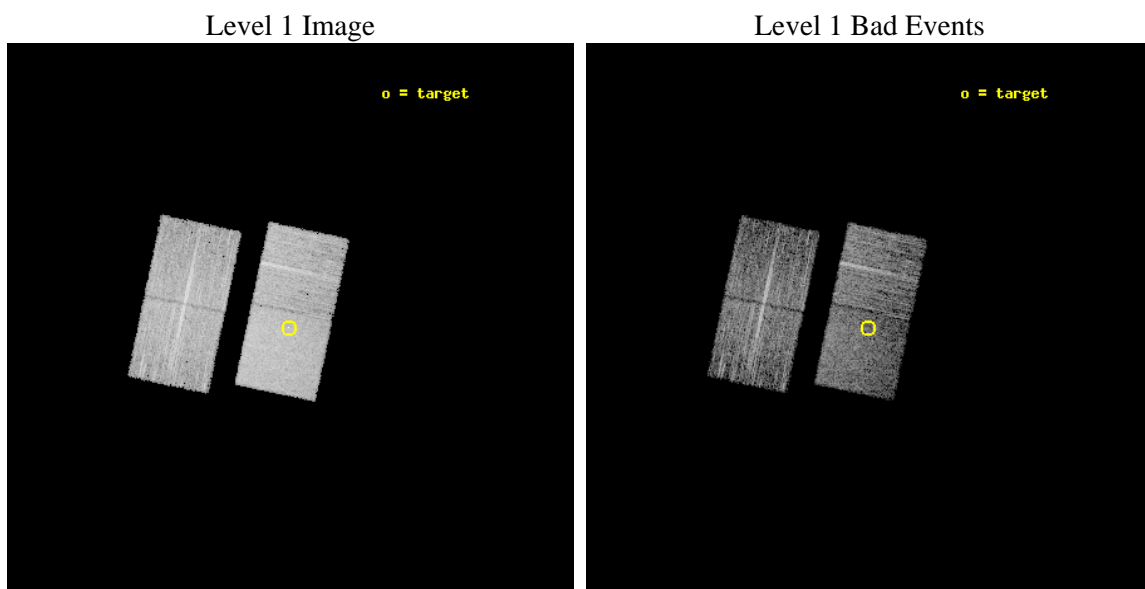
seq_num	702367	Sequence number
obs_id	12731	Observation id
title	Completing the Chandra 3C Snapshot Survey: Extragalactic Radio Sources with $z < 0.3$	Proposal title
observer	Dr. Daniel Harris	Principal investigator
object	3C 223	Source name
dtcycle	0	
cycle	P	events from which exps? Prim/Second/Both
ra_targ	144.969583	Observer's specified target RA [deg]
dec_targ	35.899444	Observer's specified target Dec [deg]
ra_nom	144.96611027478	Nominal RA [deg]
dec_nom	35.900541807871	Nominal Dec [deg]
roll_nom	101.94584766685	Nominal Roll [deg]
revision	1	Processing version of data
ontime	8053.6689269543	Sum of GTIs [s]
livetime	7948.4418133988	Livetime [s]
ontime2	8050.4048166871	Sum of GTIs [s]
ontime3	8053.5868469477	Sum of GTIs [s]
ontime6	8050.4868766665	Sum of GTIs [s]
ontime7	8053.6689269543	Sum of GTIs [s]
l2events	43022	Number of level 2 events



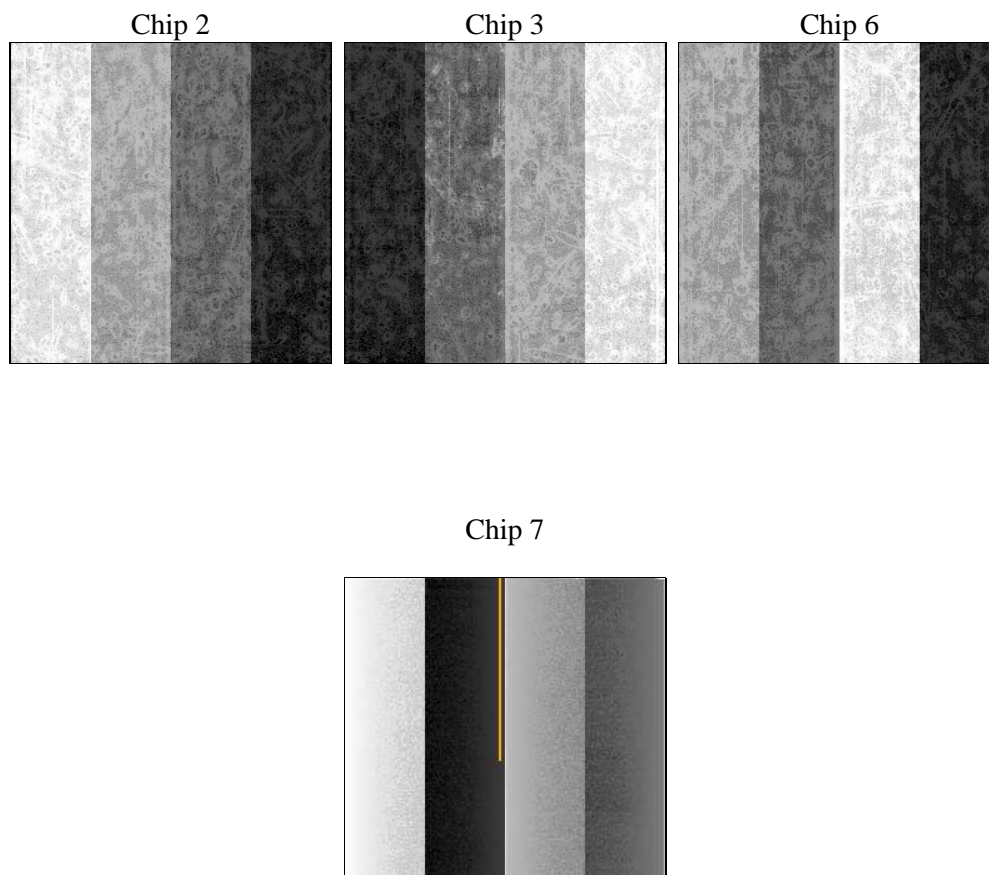
2 OBI

2.1 OBI

2.1.1 Images



2.1.2 Bias



2.1.3 Parameters

obi_num	0	Obi number	sched_exp_time	8000.000000	[s] Scheduled observation exposure time
ascdsver	8.4.3	Processing system revision	ontime	8053.6689269543	Sum of GTIs [s]
caldbver	4.4.7	 	ontime2	8050.4048166871	Sum of GTIs [s]
date	2012-01-07T20:24:24	Date and time of file creation	ontime3	8053.5868469477	Sum of GTIs [s]
revision	1	Processing version of data	ontime6	8050.4868766665	Sum of GTIs [s]
			ontime7	8053.6689269543	Sum of GTIs [s]
			l1events	215820	Number of level 1 events

2.1.4 Events

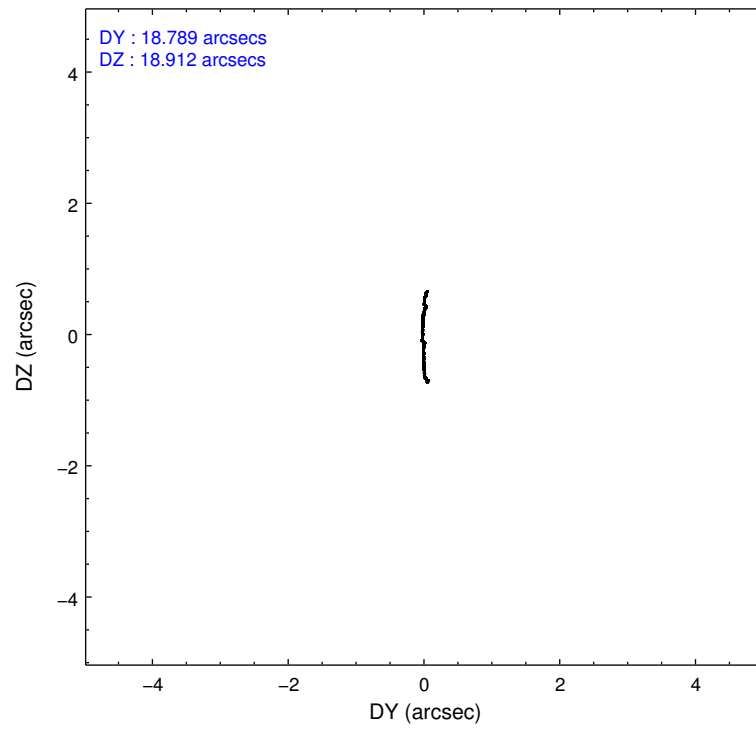
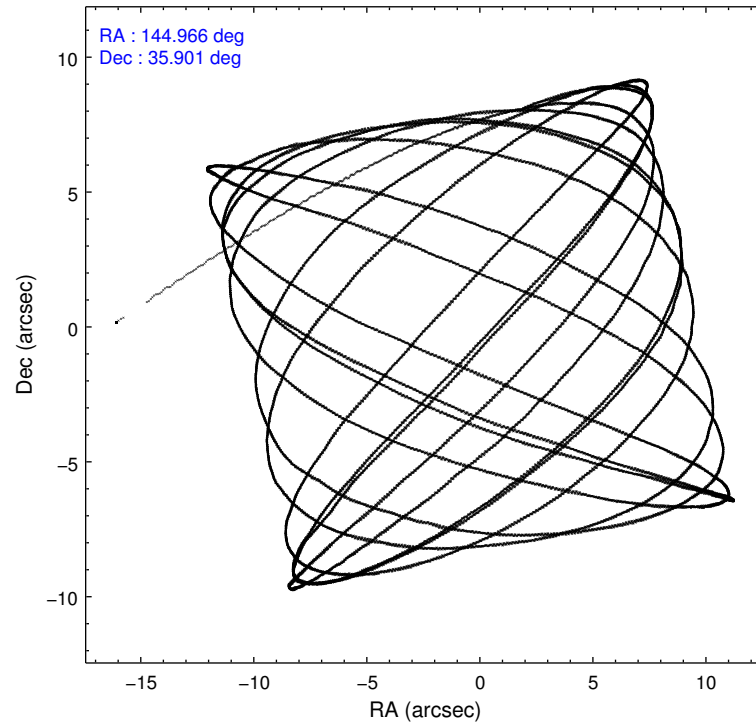
	ccd 2	ccd 3	ccd 6	ccd 7
level 1 events	47406	51158	51929	65327
rejected events	41985	45740	46011	36002
rejected %	88%	89%	88%	55%

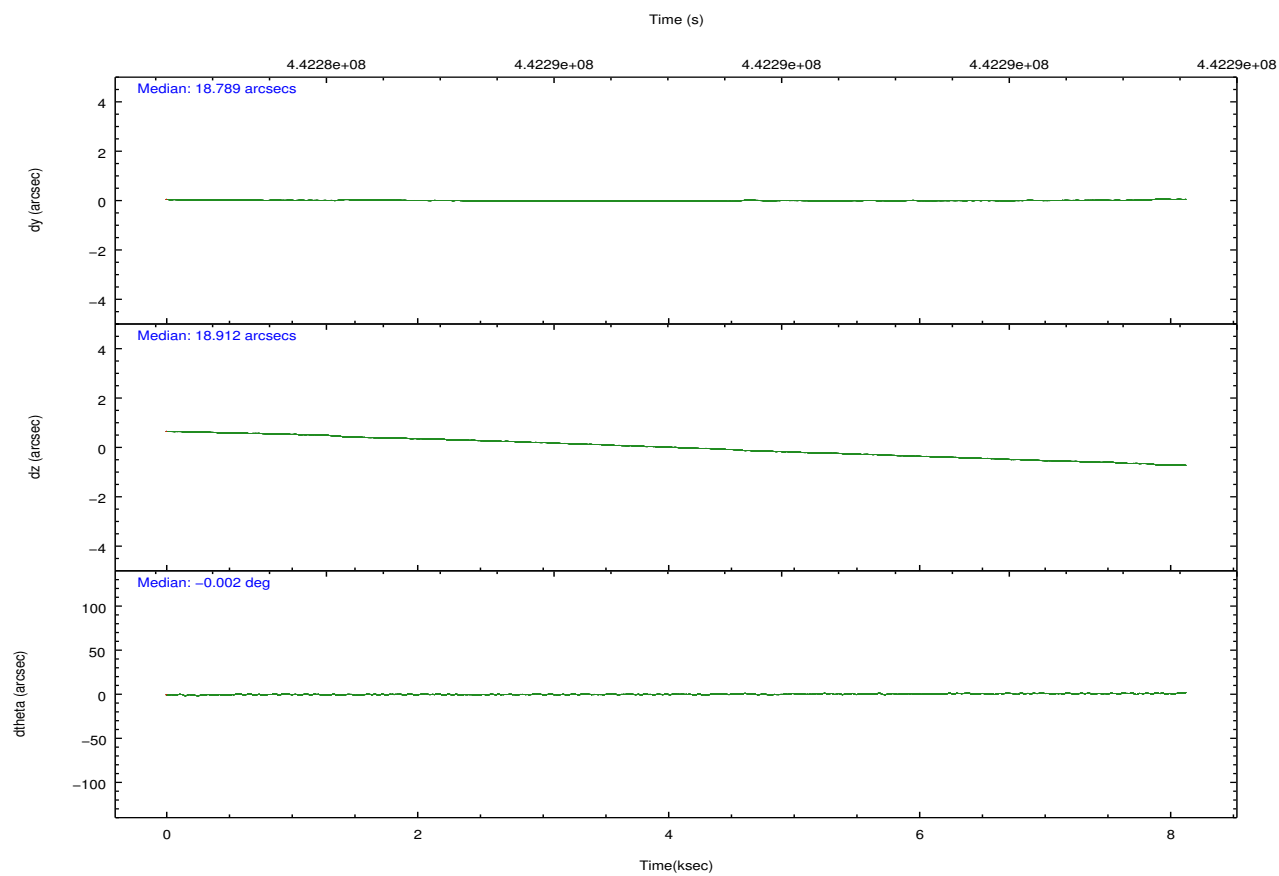
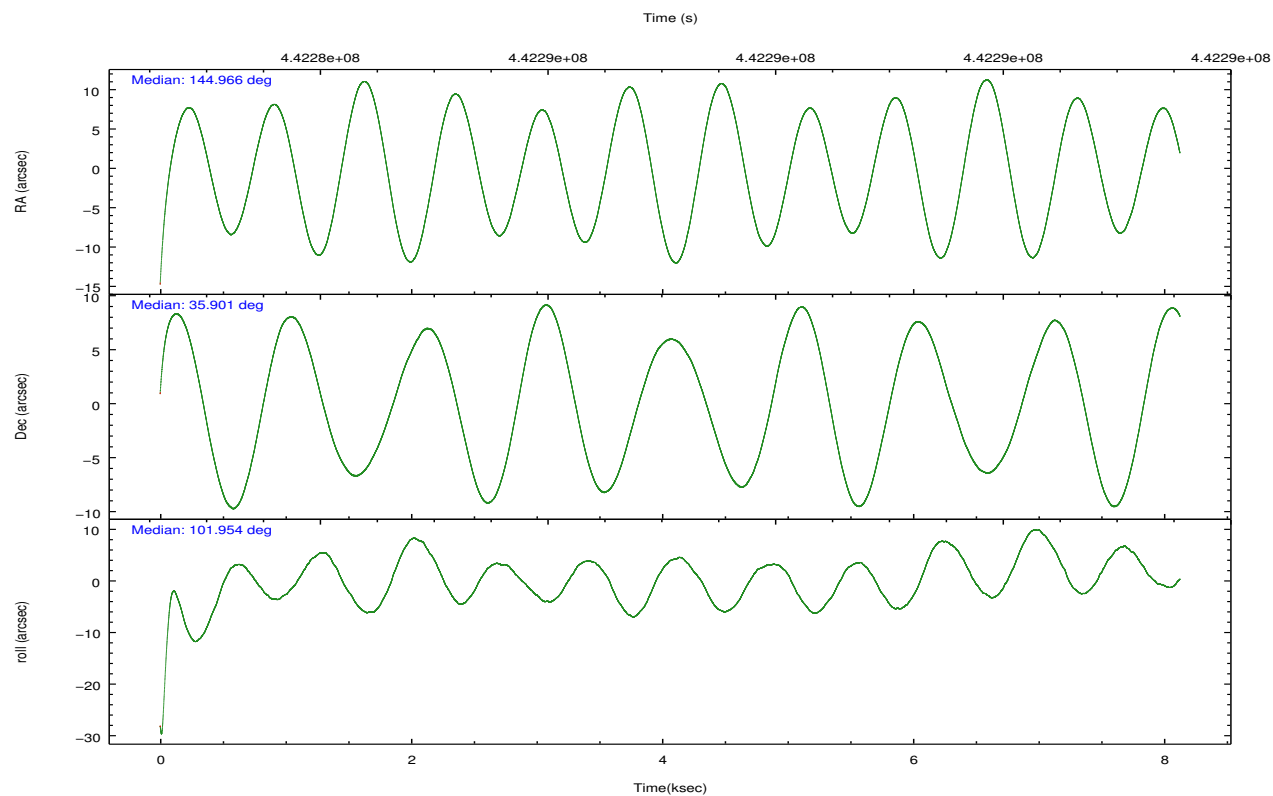
	ccd 2	ccd 3	ccd 6	ccd 7
grade 0 events	1875	1866	2022	2753
	3%	3%	3%	4%
grade 1 events	30	38	31	75
	0%	0%	0%	0%
grade 2 events	1300	1228	1317	5929
	2%	2%	2%	9%
grade 3 events	562	597	638	2600
	1%	1%	1%	3%
grade 4 events	638	566	587	2554
	1%	1%	1%	3%
grade 5 events	2056	2419	2519	6827
	4%	4%	4%	10%
grade 6 events	1049	1162	1358	15518
	2%	2%	2%	23%
grade 7 events	39896	43282	43457	29071
	84%	84%	83%	44%

2.2 Compared Parameters

Parameter	Planned	Actual	Parameter	Planned	Actual
Instrument	ACIS	ACIS	Obspar format version number	7	7
Detector	ACIS-2367	ACIS-2367	Obspar file type	PREDICTED	ACTUAL
Grating	NONE	NONE	Obspar update status	NONE	UPDATED
Data mode	VFAINT	VFAINT	CCD I0 on	N	N
Observation mode	POINTING	POINTING	CCD I1 on	N	N
[deg] Pointing RA	144.988982	144.9661102747826	CCD I2 on	O1	Y
[deg] Pointing Dec	35.880412	35.90054180787087	CCD I3 on	O2	Y
[deg] Pointing Roll	101.775867	101.9458476668497	CCD S0 on	N	N
[mm] SIM focus pos	-0.684267	-0.6828225247311905	CCD S1 on	N	N
[mm] SIM defocus	0	0.001444936568705701	CCD S2 on	Y	Y
[mm] SIM translation stage pos	-190.132523	-190.145094680475	CCD S3 on	Y	Y
[mm] SIM translation stage offset	0	0.01257209746719923	CCD S4 on	N	N
[s] Observation start time (MET)	442283130.184000	442281863.13572	CCD S5 on	N	N
Observation start date	2012-01-07T00:24:24	2012-01-07T00:04:23	Number of optional ACIS chips dropped	0	0
[s] Observation end time (MET)	442291130.184000	442291797.43625	On-chip summing requested	N	N
Observation end date	2012-01-07T02:37:44	2012-01-07T02:49:57	Subarray requested	NONE	NONE
Read mode	TIMED	TIMED	Alternating exposures requested	N	N
			[s] Primary exposure time	0.000000	3.1

2.3 Aspect



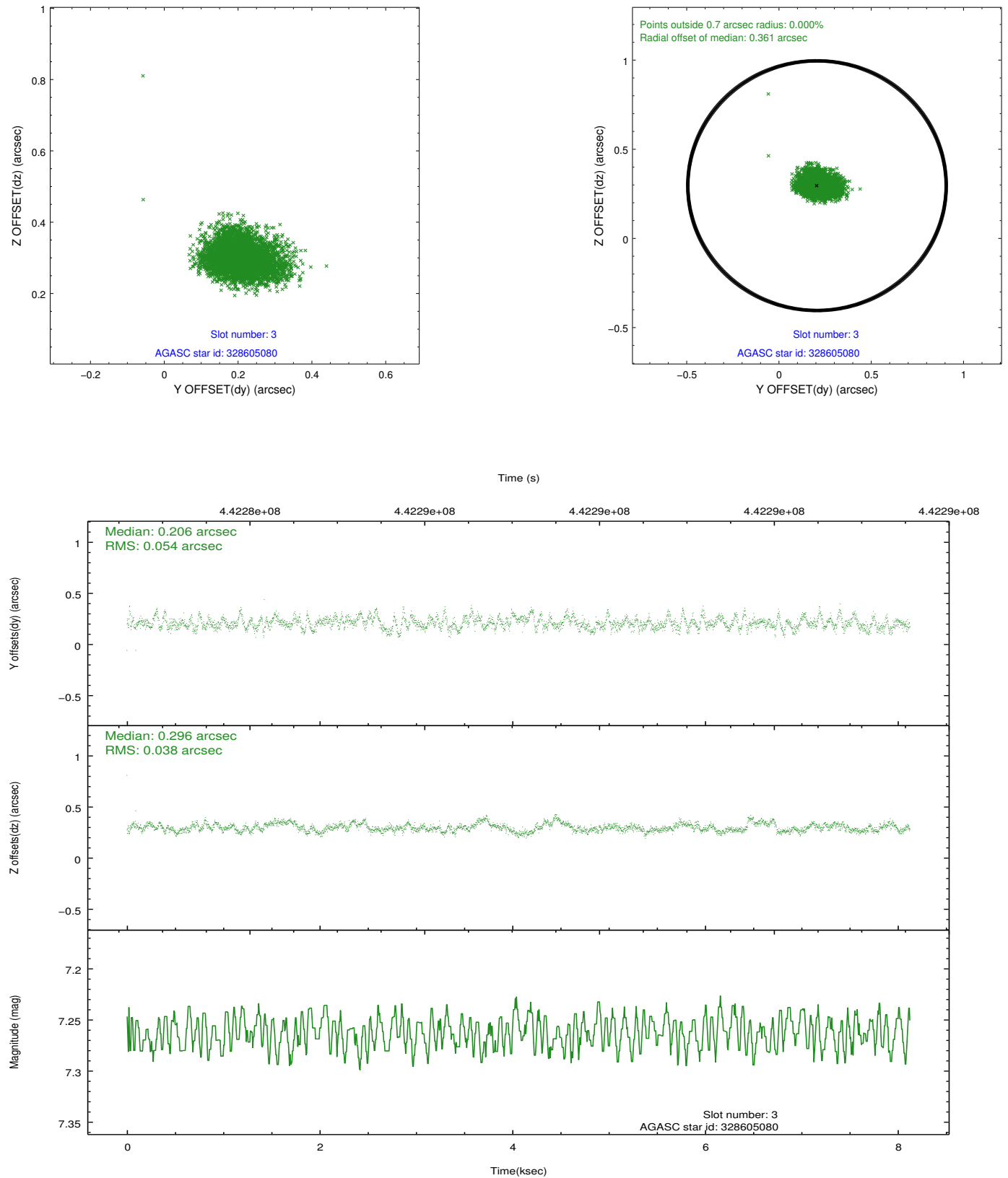


Slot Statistics

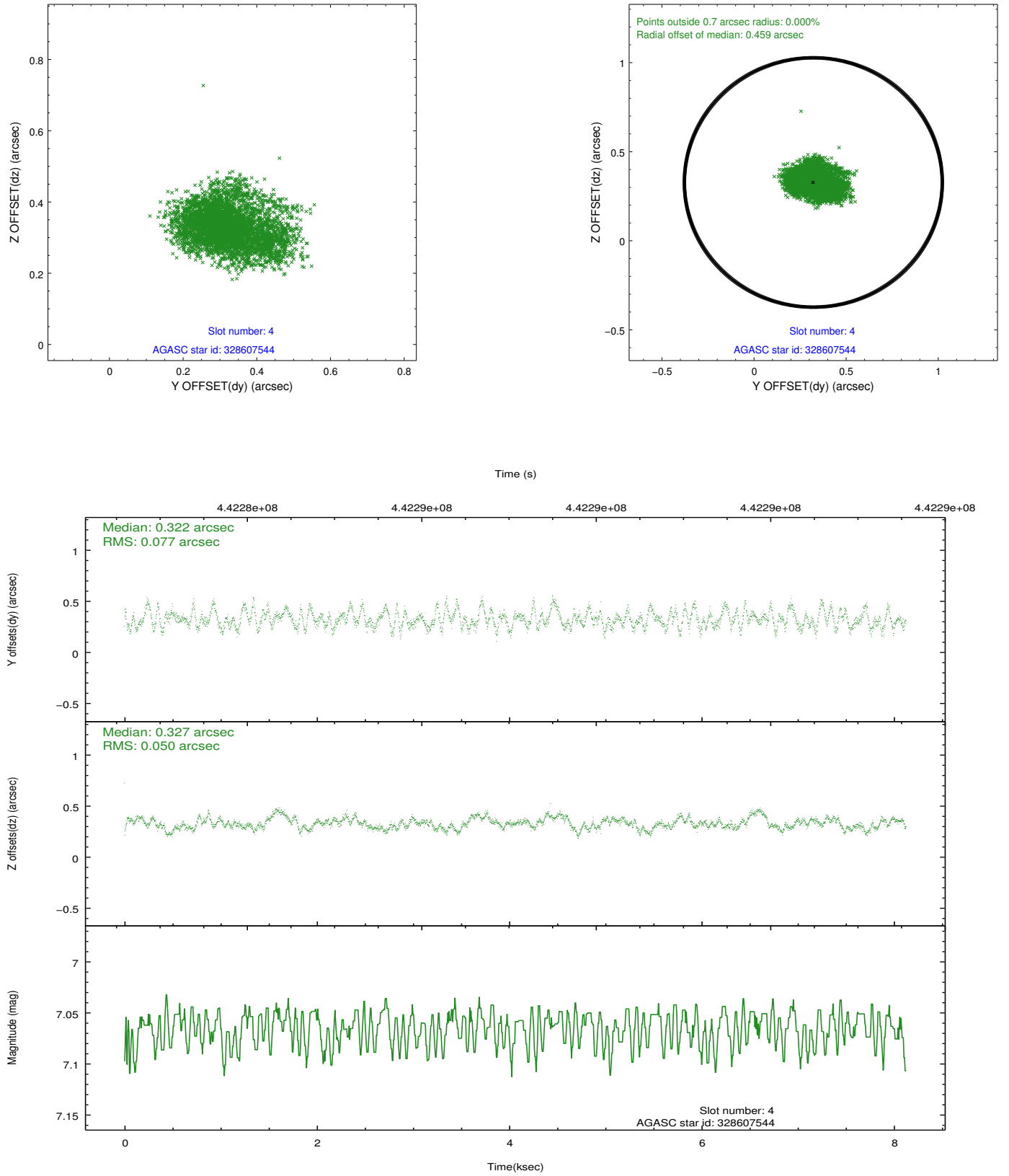
slot	status	id	mag	n_pts	med_dy	med_dz	dr1	dr2	ra	dec	mean_y	mean_z
0	FID	ACIS-S-2	6.91	1983	-0.158	-0.098	0.006	0.012	0.000000	0.000000	-772.10	-1740.34
1	FID	ACIS-S-4	6.99	1983	0.176	0.089	0.007	0.011	0.000000	0.000000	2141.28	167.49
2	FID	ACIS-S-6	7.12	1983	-0.046	0.017	0.007	0.012	0.000000	0.000000	390.98	805.67
3	GUIDE	328605080	7.26	3965	0.206	0.296	0.069	0.115	144.866871	35.243093	-2172.52	820.73
4	GUIDE	328607544	7.06	3964	0.322	0.327	0.100	0.158	144.990856	35.335956	-1920.35	395.87
5	GUIDE	328608680	9.45	3946	-0.246	0.080	0.168	0.254	144.429368	36.341184	1958.73	1249.64
6	GUIDE	328609456	9.30	3916	0.088	-0.136	0.123	0.196	144.920629	35.915173	163.61	170.13
7	GUIDE	328607000	7.65	3963	-0.383	-0.543	0.114	0.203	144.223352	35.599320	-525.45	2399.59

2.4 Star Slots

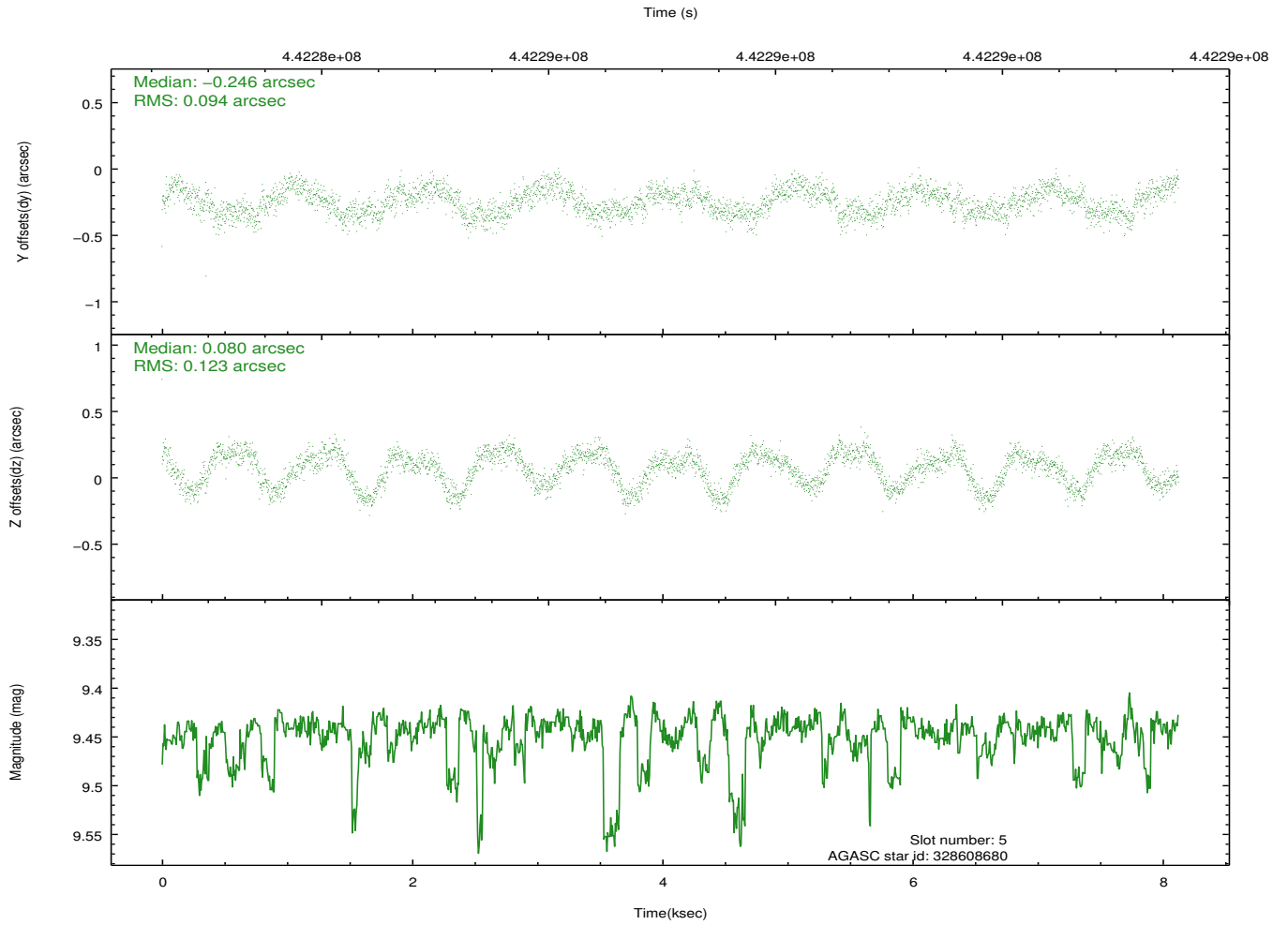
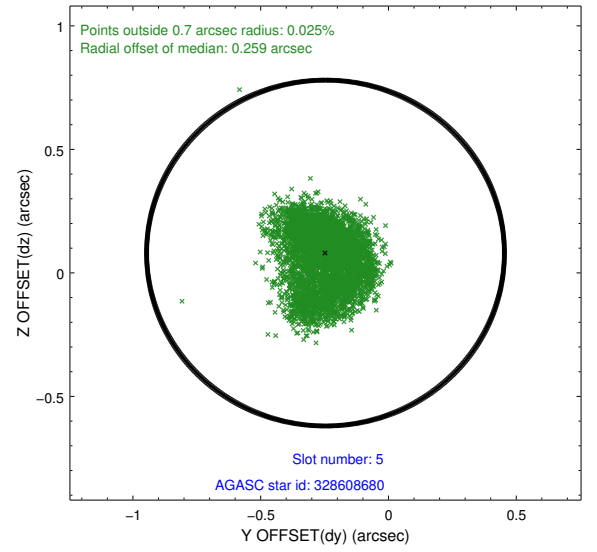
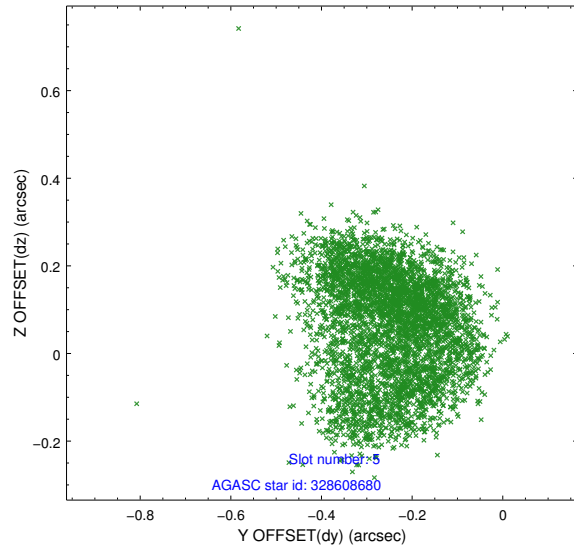
2.4.1 Slot 3



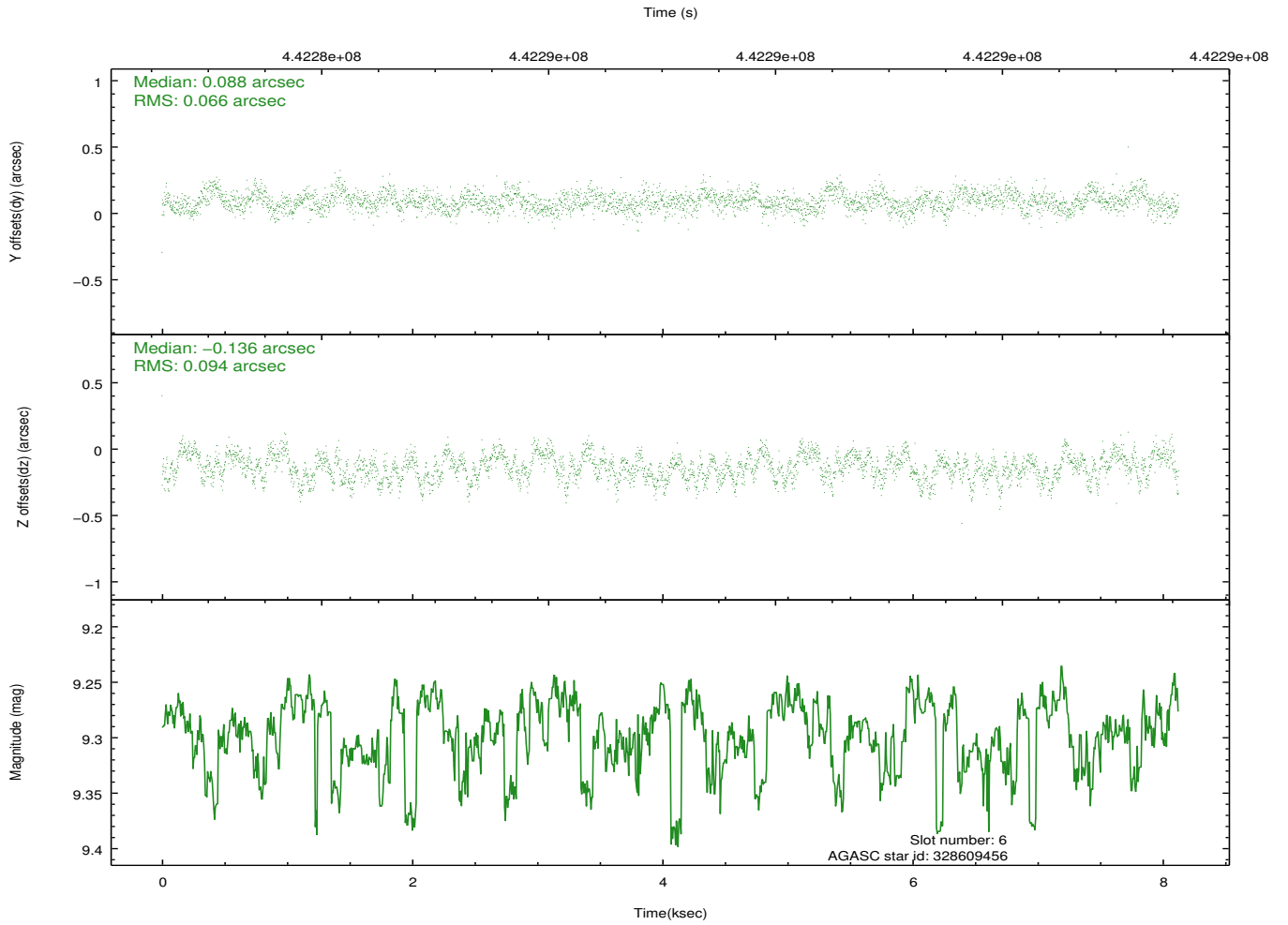
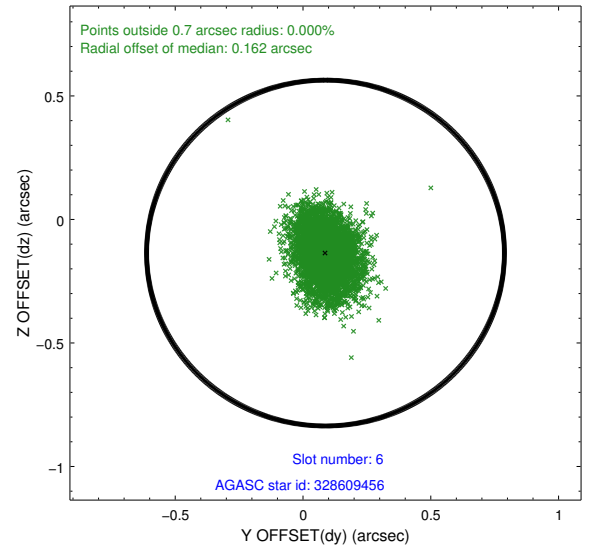
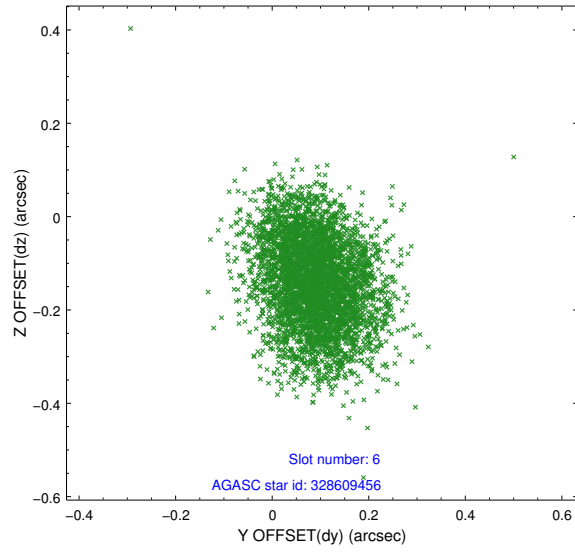
2.4.2 Slot 4



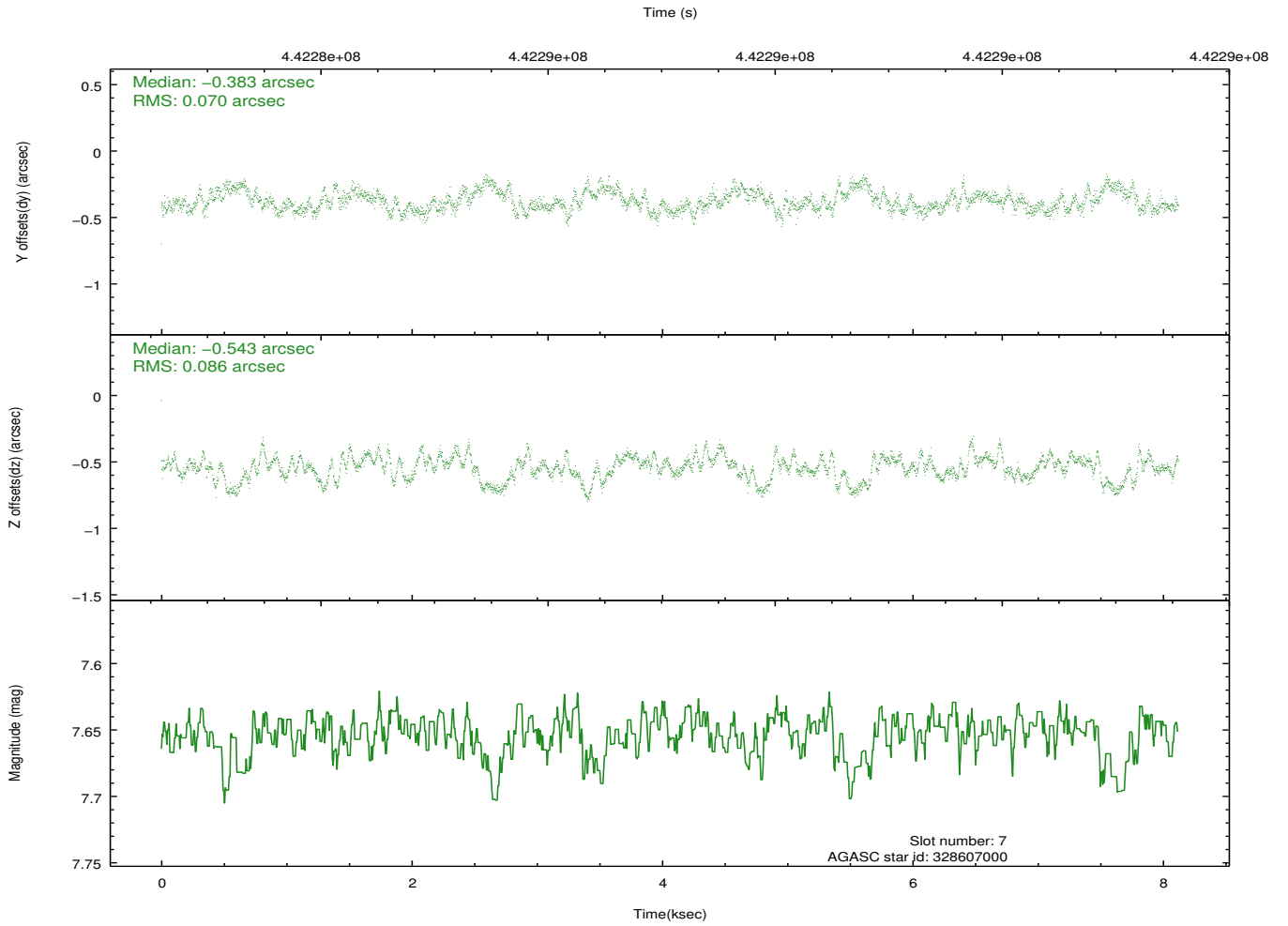
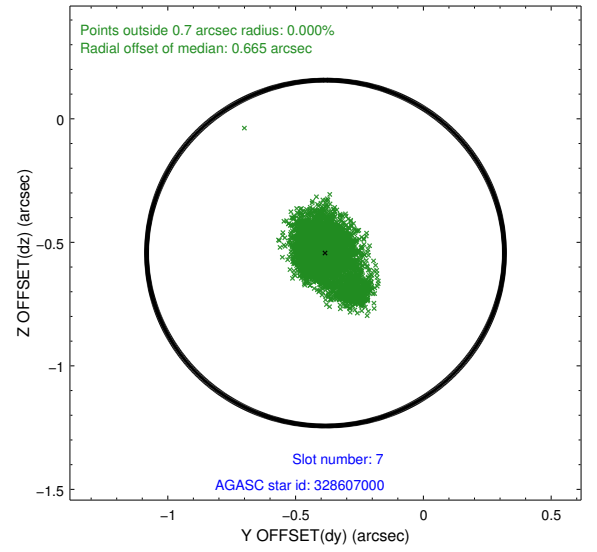
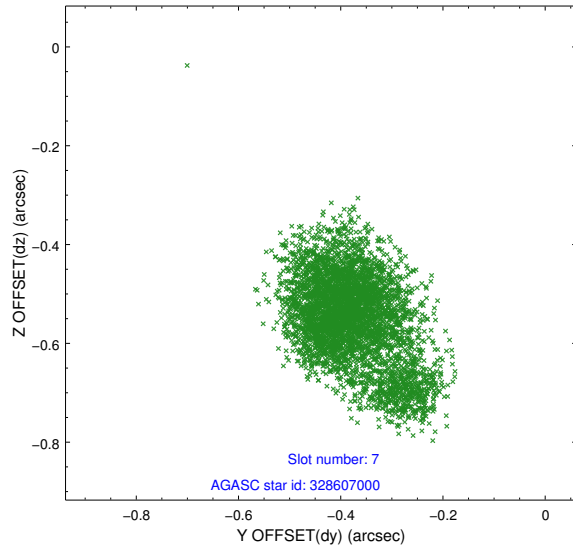
2.4.3 Slot 5



2.4.4 Slot 6

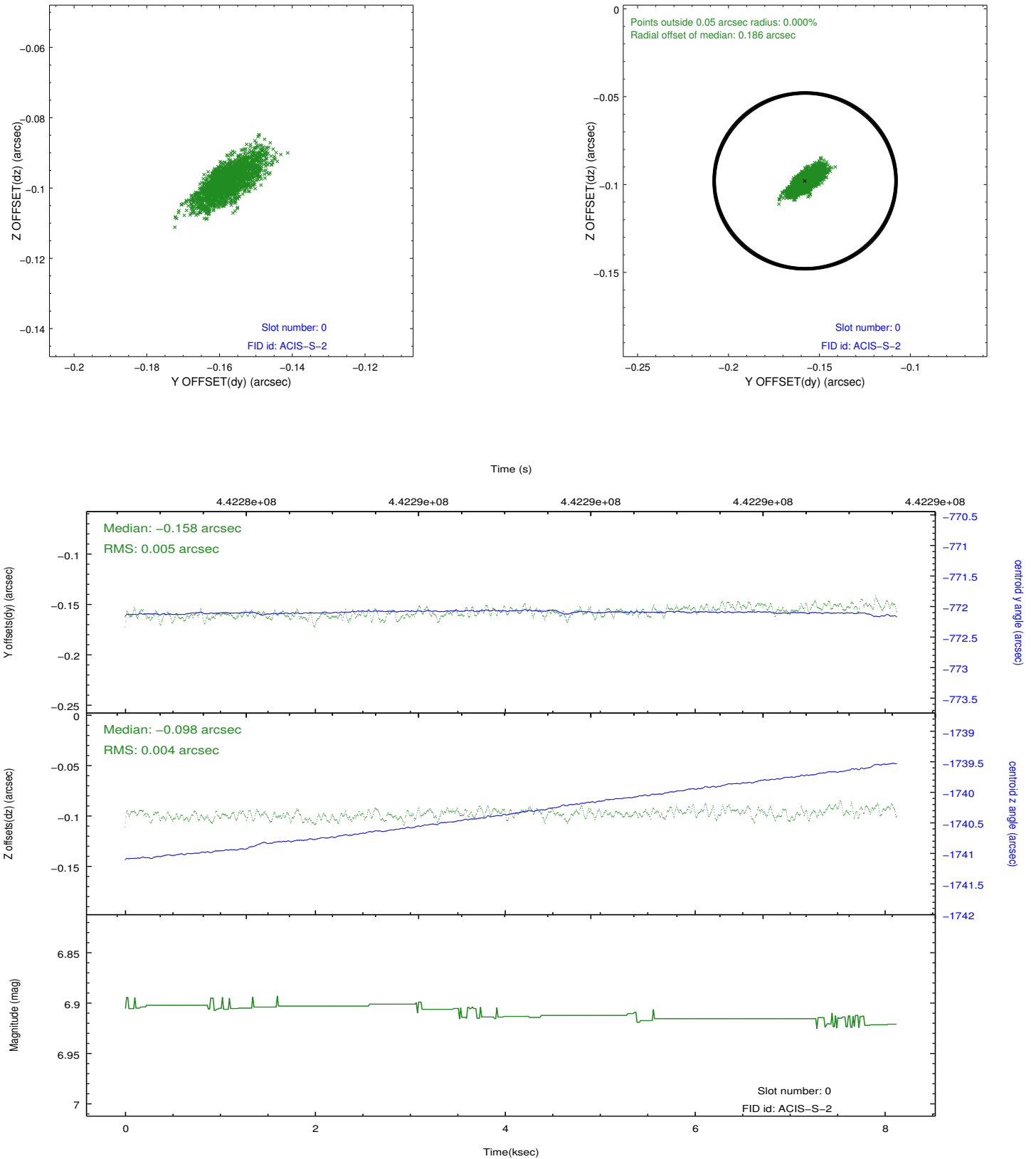


2.4.5 Slot 7

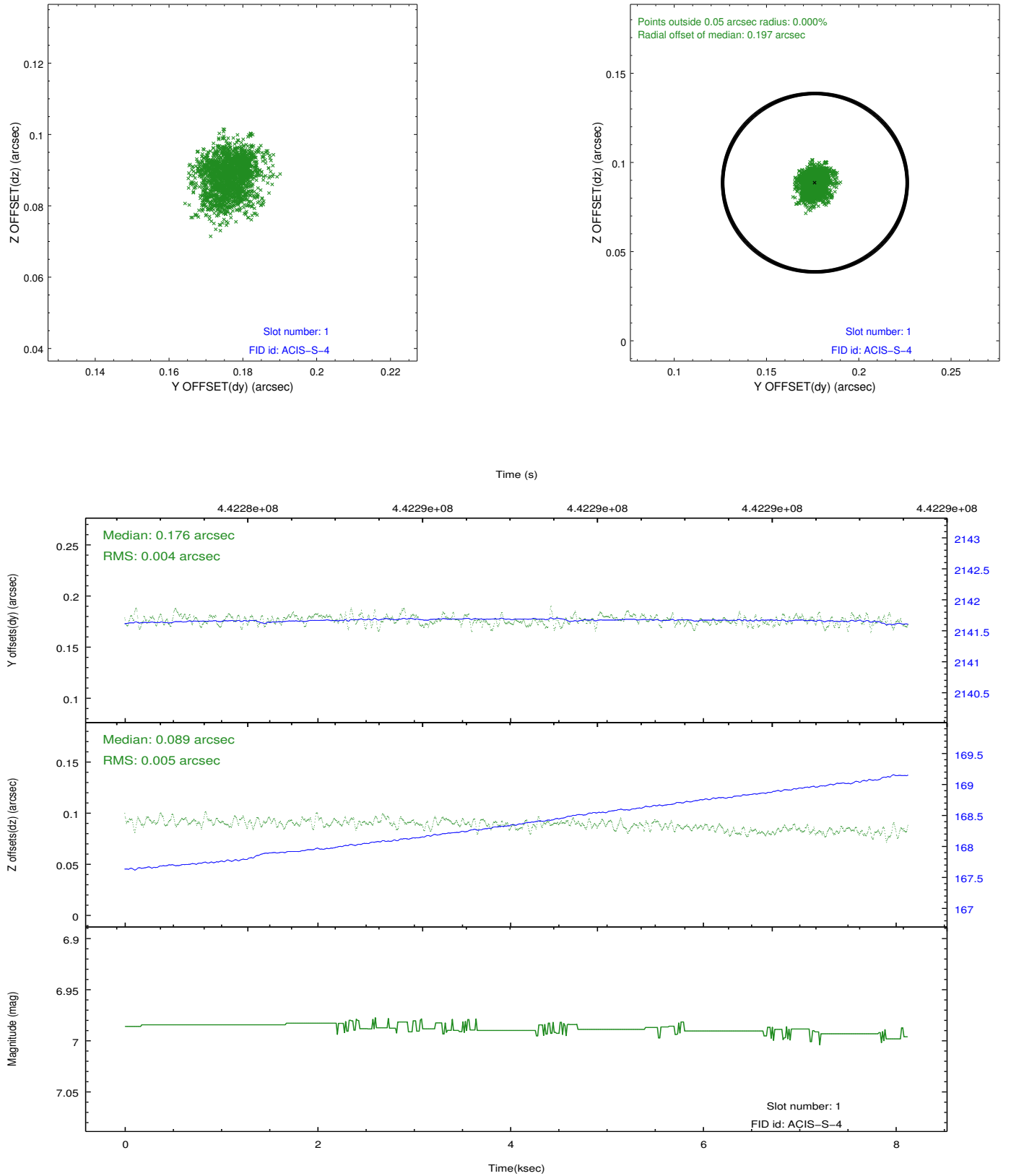


2.5 FID Slots

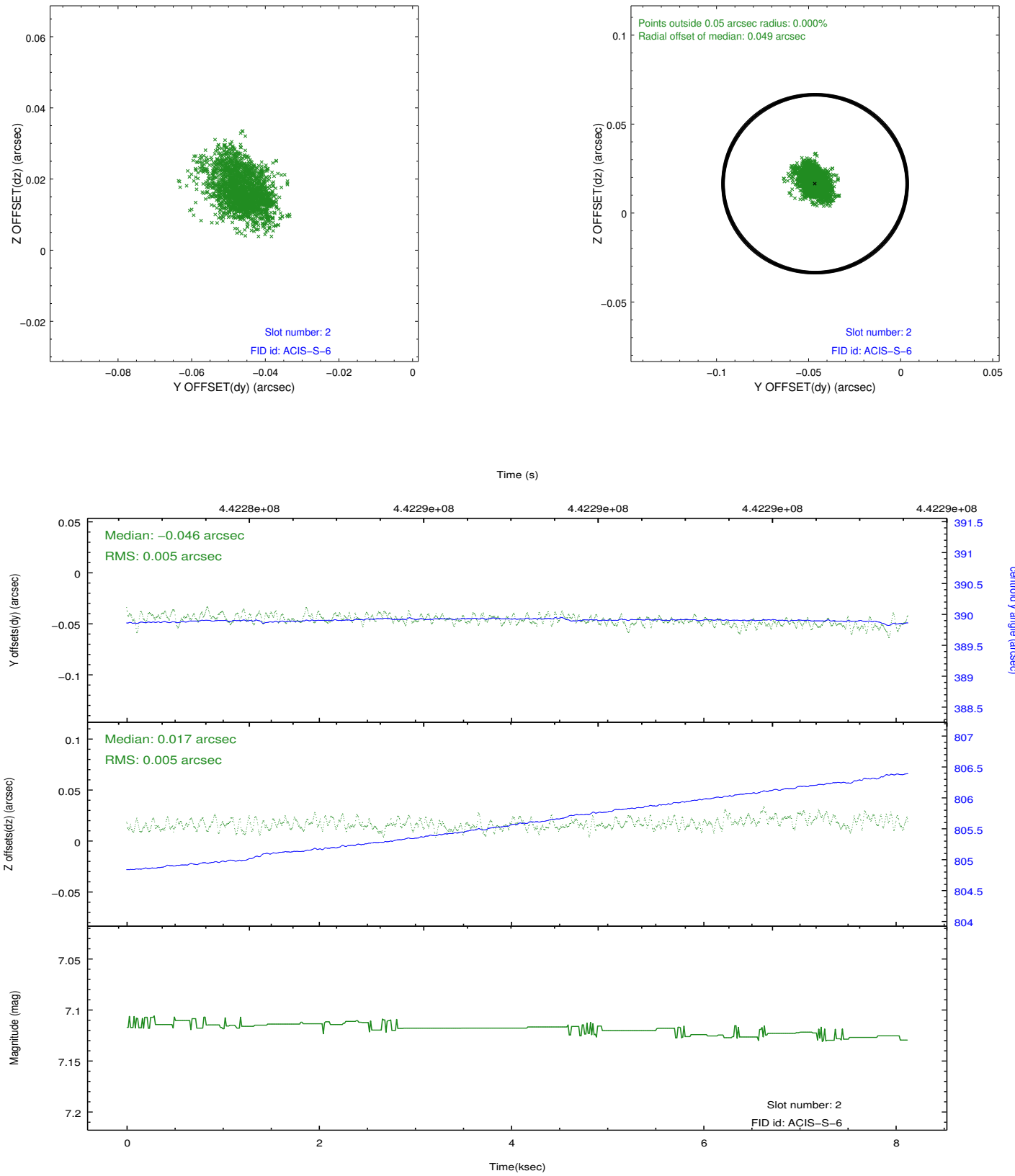
2.5.1 Slot 0



2.5.2 Slot 1



2.5.3 Slot 2



A Summary

A.1 Status

V&V Scientist	Beth Sundheim
V&V Date (YYYY-MM-DD)	2012.01.08
V&V Edition	1
V&V Disposition and Status	OK
V&V Charge Time	8.0536689269543

A.2 Comments