

# V&V Reference Report

## L2 ASCDS Version : 8.4.5

Observation 12725 - L2 Version 2  
Chandra X-Ray Center

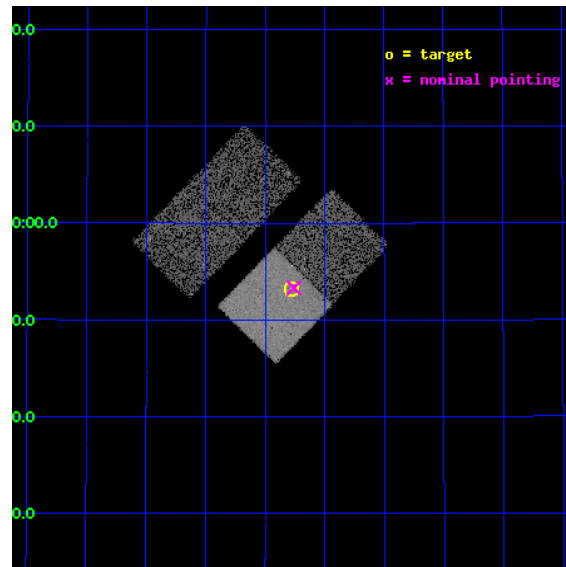
L2 Processing Date : Jul 5 2012

## Contents

<b>1</b>	<b>Front</b>	<b>2</b>
<b>2</b>	<b>OBI</b>	<b>3</b>
2.1	OBI . . . . .	3
2.1.1	Images . . . . .	3
2.1.2	Bias . . . . .	3
2.1.3	Parameters . . . . .	4
2.1.4	Events . . . . .	4
2.2	Compared Parameters . . . . .	5
2.3	Aspect . . . . .	6
2.4	Star Slots . . . . .	9
2.4.1	Slot 3 . . . . .	9
2.4.2	Slot 4 . . . . .	10
2.4.3	Slot 5 . . . . .	11
2.4.4	Slot 6 . . . . .	12
2.4.5	Slot 7 . . . . .	13
2.5	FID Slots . . . . .	14
2.5.1	Slot 0 . . . . .	14
2.5.2	Slot 1 . . . . .	15
2.5.3	Slot 2 . . . . .	16
<b>A</b>	<b>Summary</b>	<b>17</b>
A.1	Status . . . . .	17
A.2	Comments . . . . .	17

# 1 Front

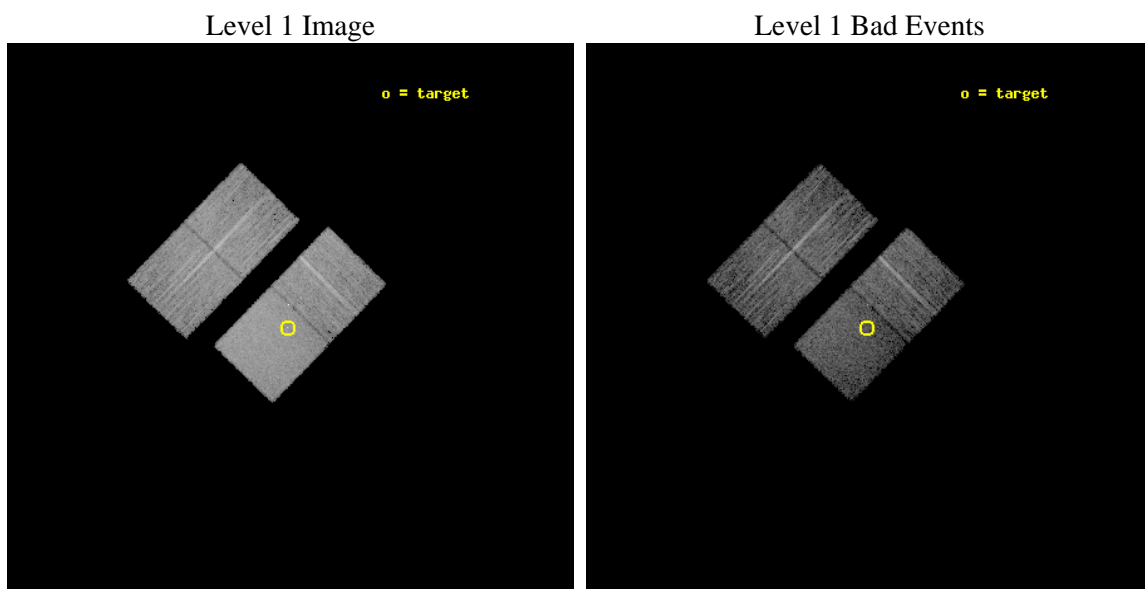
seq_num	702361	Sequence number
obs_id	12725	Observation id
title	Completing the Chandra 3C Snapshot Survey: Extragalactic Radio Sources with $z < 0.3$	Proposal title
observer	Dr. Daniel Harris	Principal investigator
object	3C 93.1	Source name
dtcycle	0	&#160
cycle	P	events from which exps? Prim/Second/Both
ra_targ	57.195417	Observer's specified target RA [deg]
dec_targ	33.887528	Observer's specified target Dec [deg]
ra_nom	57.189787980656	Nominal RA [deg]
dec_nom	33.888730461995	Nominal Dec [deg]
roll_nom	134.17628532038	Nominal Roll [deg]
revision	2	Processing version of data
ontime	7790.3000599146	Sum of GTIs [s]
livetime	7688.5140544963	Livetime [s]
ontime2	7790.3000599146	Sum of GTIs [s]
ontime3	7790.3000599146	Sum of GTIs [s]
ontime6	7790.3000599146	Sum of GTIs [s]
ontime7	7790.3000599146	Sum of GTIs [s]
l2events	46348	Number of level 2 events



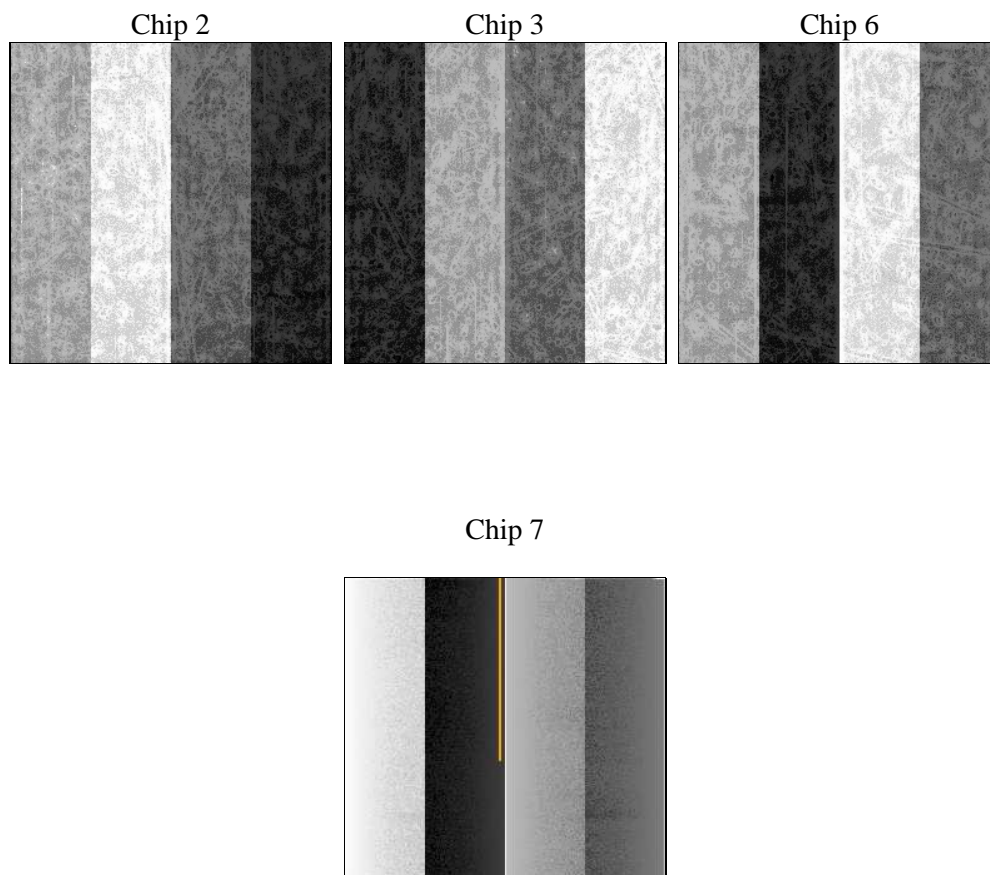
## 2 OBI

### 2.1 OBI

#### 2.1.1 Images



#### 2.1.2 Bias



### 2.1.3 Parameters

obi_num	1	Obi number	sched_exp_time	8000.000000	[s] Scheduled observation exposure time
ascdsver	8.4.5	Processing system revision	ontime	7790.3000599146	Sum of GTIs [s]
caldsver	4.5.0	&#160	ontime2	7790.3000599146	Sum of GTIs [s]
date	2012-07-05T22:12:49	Date and time of file creation	ontime3	7790.3000599146	Sum of GTIs [s]
revision	2	Processing version of data	ontime6	7790.3000599146	Sum of GTIs [s]
			ontime7	7790.3000599146	Sum of GTIs [s]
			l1events	238290	Number of level 1 events

### 2.1.4 Events

	ccd 2	ccd 3	ccd 6	ccd 7
level 1 events	57657	54587	56391	69655
rejected events	51646	48770	49797	38392
rejected %	89%	89%	88%	55%

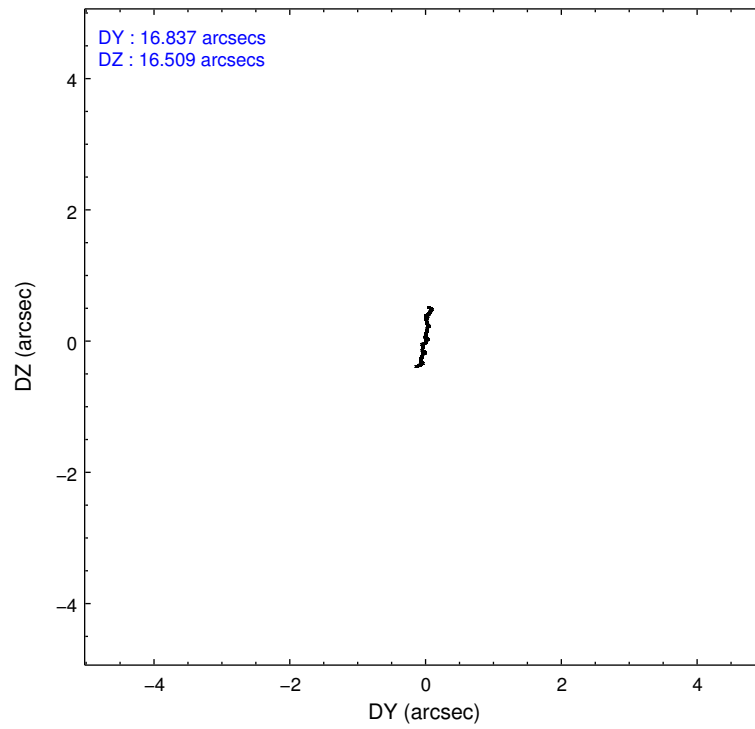
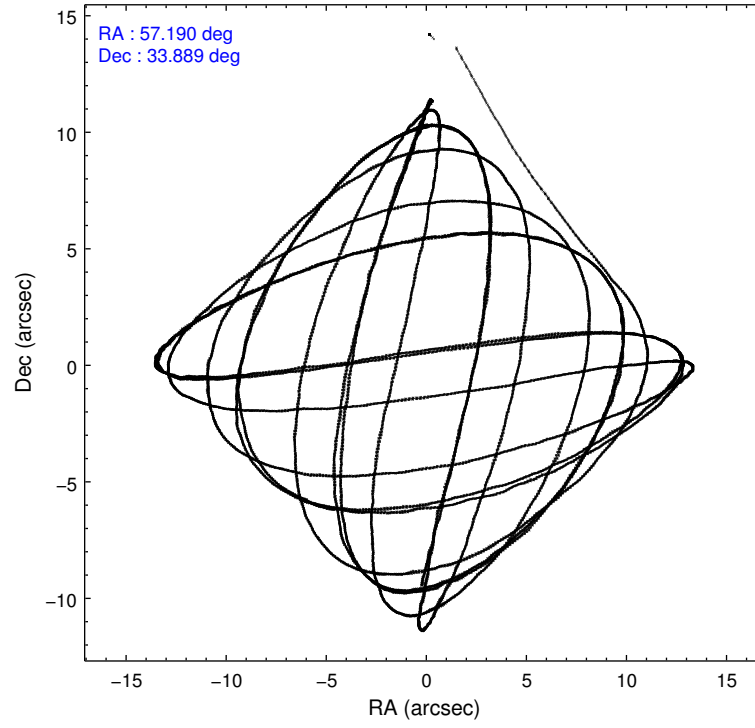
	ccd 2	ccd 3	ccd 6	ccd 7
grade 0 events	2181	2072	2238	2836
	3%	3%	3%	4%
grade 1 events	34	31	36	99
	0%	0%	0%	0%
grade 2 events	1465	1264	1516	6461
	2%	2%	2%	9%
grade 3 events	611	631	706	2654
	1%	1%	1%	3%
grade 4 events	646	627	657	2765
	1%	1%	1%	3%
grade 5 events	2234	2550	2557	7296
	3%	4%	4%	10%
grade 6 events	1109	1225	1481	16560
	1%	2%	2%	23%
grade 7 events	49377	46187	47200	30984
	85%	84%	83%	44%

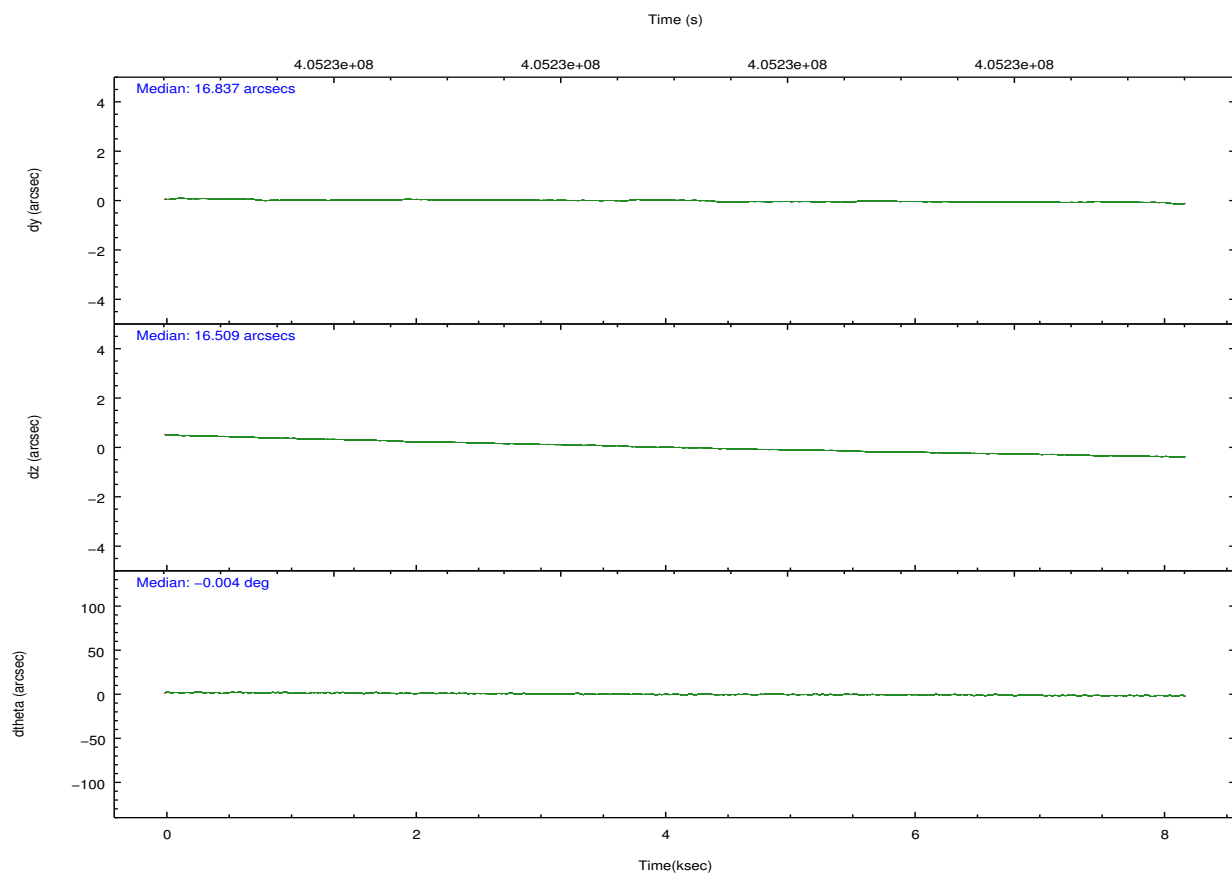
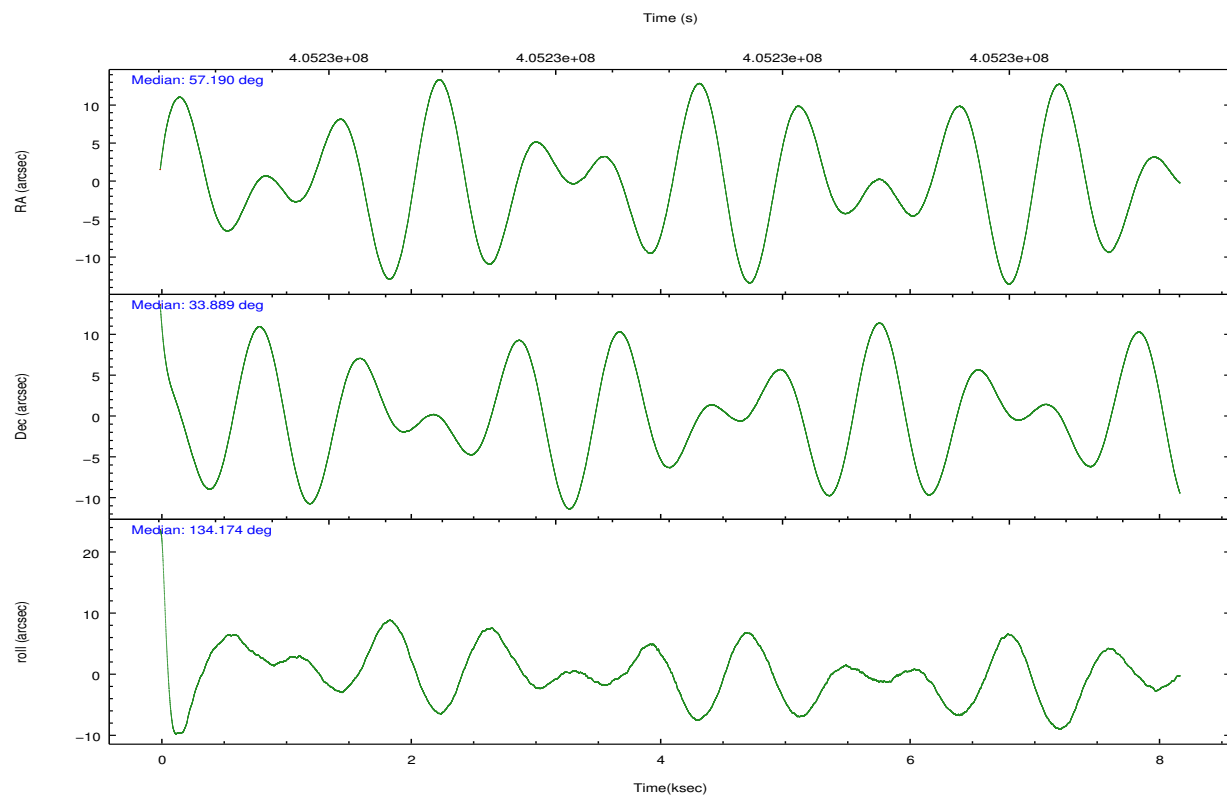


## 2.2 Compared Parameters

Parameter	Planned	Actual	Parameter	Planned	Actual
Instrument	ACIS	ACIS	Obspar format version number	7	7
Detector	ACIS-2367	ACIS-2367	Obspar file type	PREDICTED	ACTUAL
Grating	NONE	NONE	Obspar update status	NONE	UPDATED
Data mode	VFAINT	VFAINT	CCD I0 on	N	N
Observation mode	POINTING	POINTING	CCD I1 on	N	N
[deg] Pointing RA	57.221552	57.18978798065616	CCD I2 on	O1	Y
[deg] Pointing Dec	33.881614	33.88873046199545	CCD I3 on	O2	Y
[deg] Pointing Roll	134.001894	134.1762853203846	CCD S0 on	N	N
[mm] SIM focus pos	-0.684267	-0.6828225247311905	CCD S1 on	N	N
[mm] SIM defocus	0	0.001444936568705701	CCD S2 on	Y	Y
[mm] SIM translation stage pos	-190.132523	-190.1425803651734	CCD S3 on	Y	Y
[mm] SIM translation stage offset	0	0.01005778216563158	CCD S4 on	N	N
[s] Observation start time (MET)	405225093.184000	405223846.2521	CCD S5 on	N	N
Observation start date	2010-11-04T02:30:27	2010-11-04T02:10:46	Number of optional ACIS chips dropped	0	0
[s] Observation end time (MET)	405233093.184000	405233975.81512	On-chip summing requested	N	N
Observation end date	2010-11-04T04:43:47	2010-11-04T04:59:35	Subarray requested	NONE	NONE
Read mode	TIMED	TIMED	Alternating exposures requested	N	N
			[s] Primary exposure time	0.000000	3.1

## 2.3 Aspect



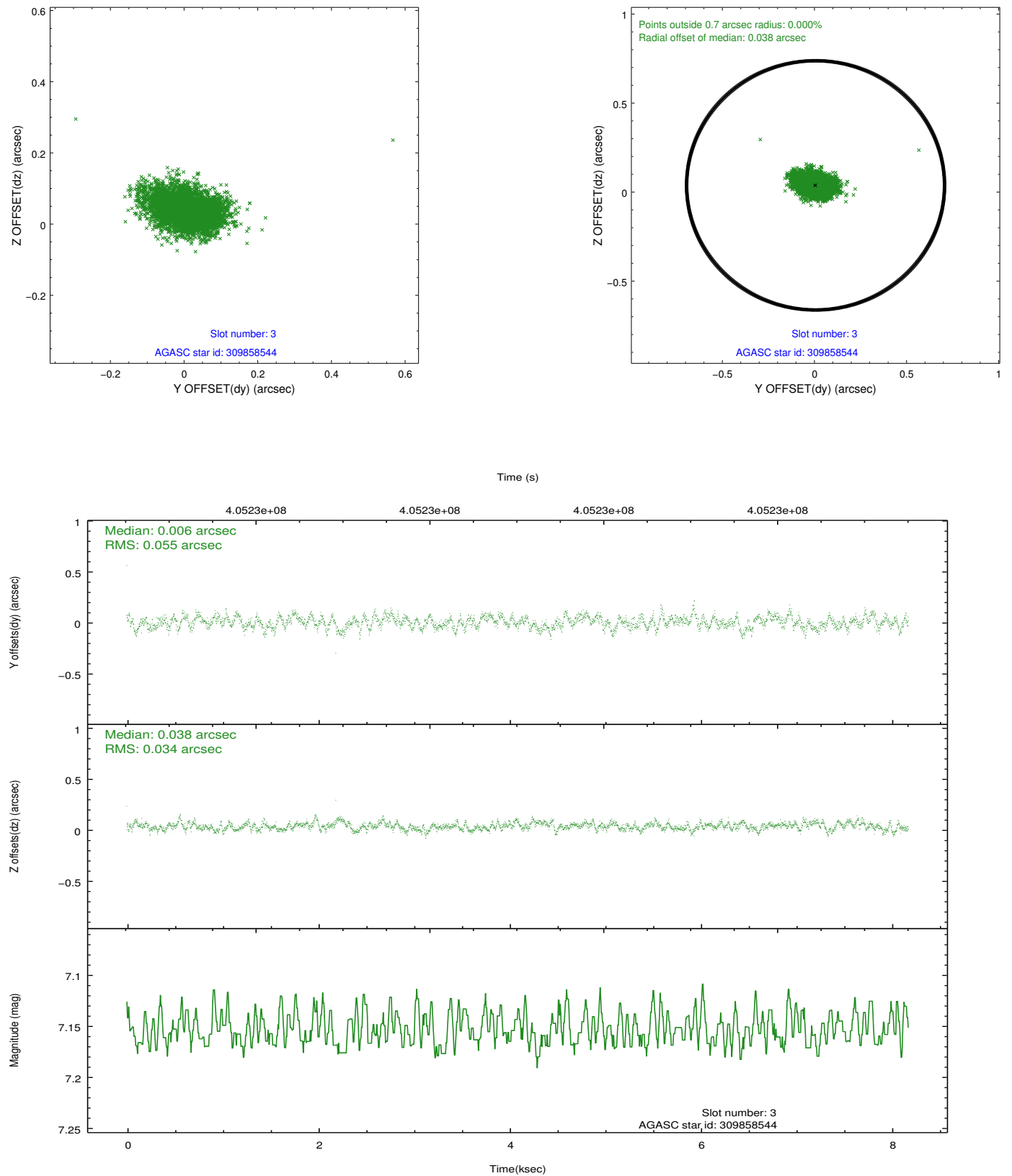


### Slot Statistics

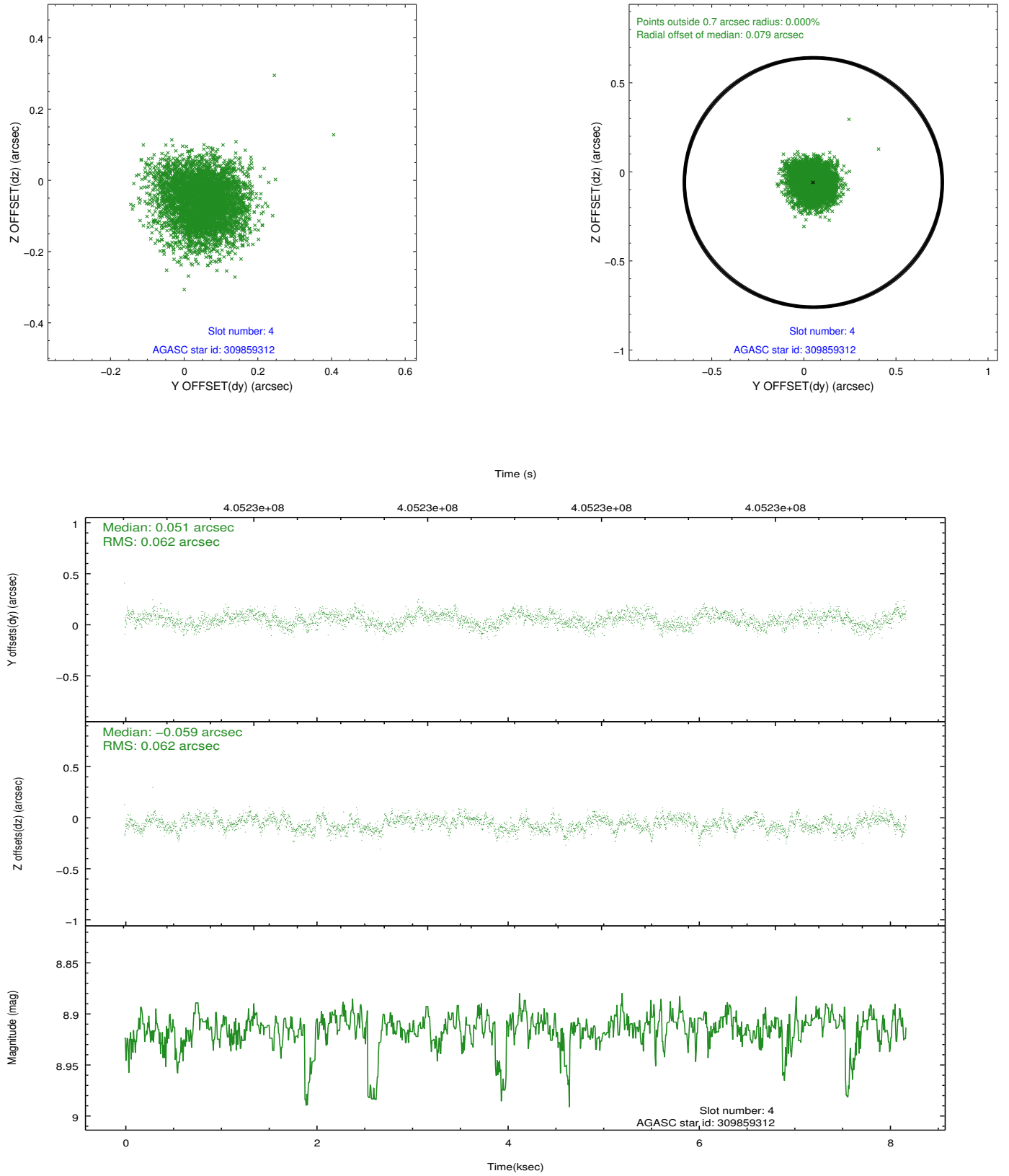
slot	status	id	mag	n_pts	med_dy	med_dz	dr1	dr2	ra	dec	mean_y	mean_z
0	FID	ACIS-S-2	6.91	1995	-0.074	-0.014	0.011	0.017	0.000000	0.000000	-769.93	-1737.91
1	FID	ACIS-S-4	6.99	1995	0.162	0.040	0.007	0.012	0.000000	0.000000	2143.28	169.90
2	FID	ACIS-S-5	7.02	1995	-0.119	-0.017	0.010	0.016	0.000000	0.000000	-1821.93	164.32
3	GUIDE	309858544	7.15	3990	0.006	0.038	0.066	0.113	57.181753	34.310334	1193.07	-986.57
4	GUIDE	309859312	8.91	3983	0.051	-0.059	0.093	0.149	57.324678	34.426851	1200.36	-1583.61
5	GUIDE	309864624	8.28	3989	-0.085	0.090	0.064	0.103	57.566206	34.362646	535.95	-1940.79
6	GUIDE	309867568	6.66	3990	0.053	-0.069	0.062	0.097	57.625360	34.052279	-392.51	-1294.95
7	GUIDE	309873056	8.27	3987	-0.025	-0.001	0.076	0.125	57.064214	34.600828	2186.55	-1463.37

## 2.4 Star Slots

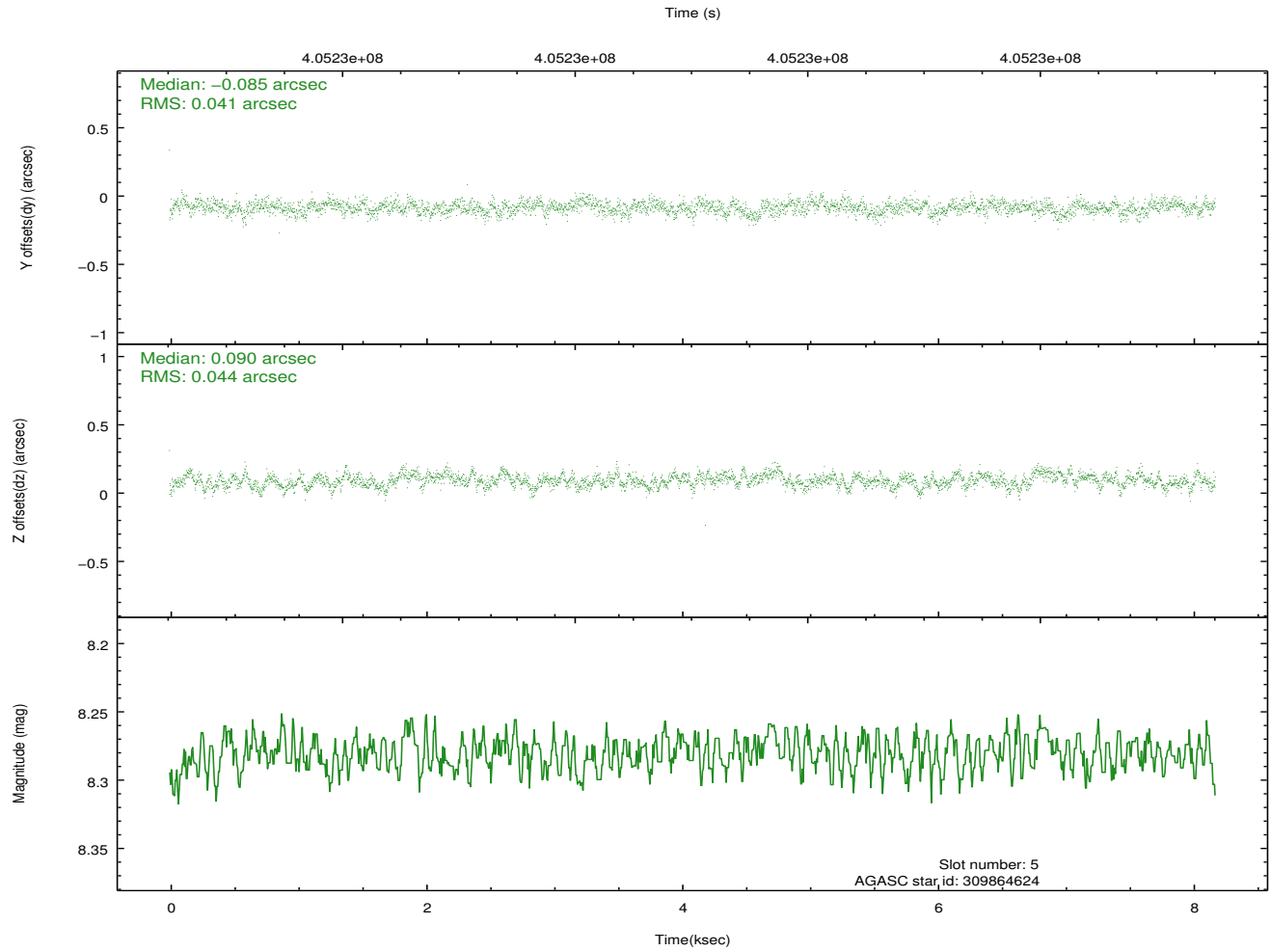
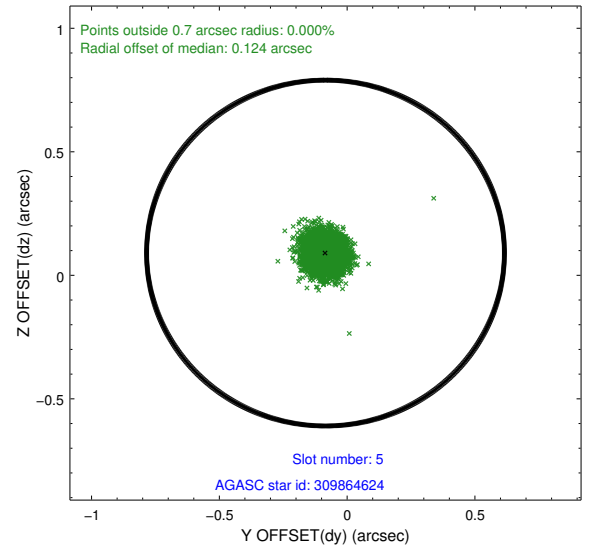
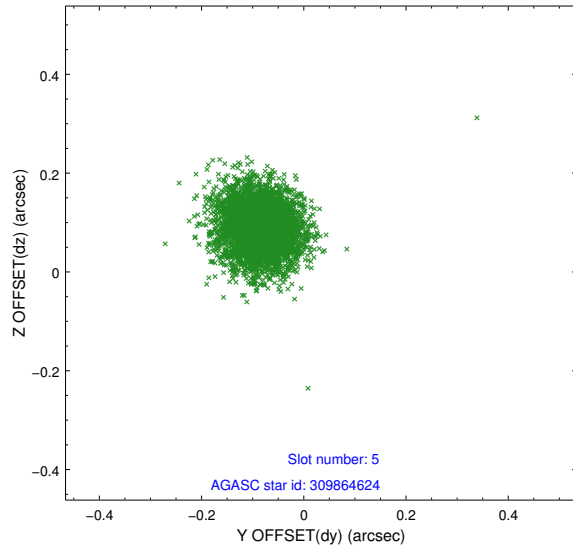
### 2.4.1 Slot 3



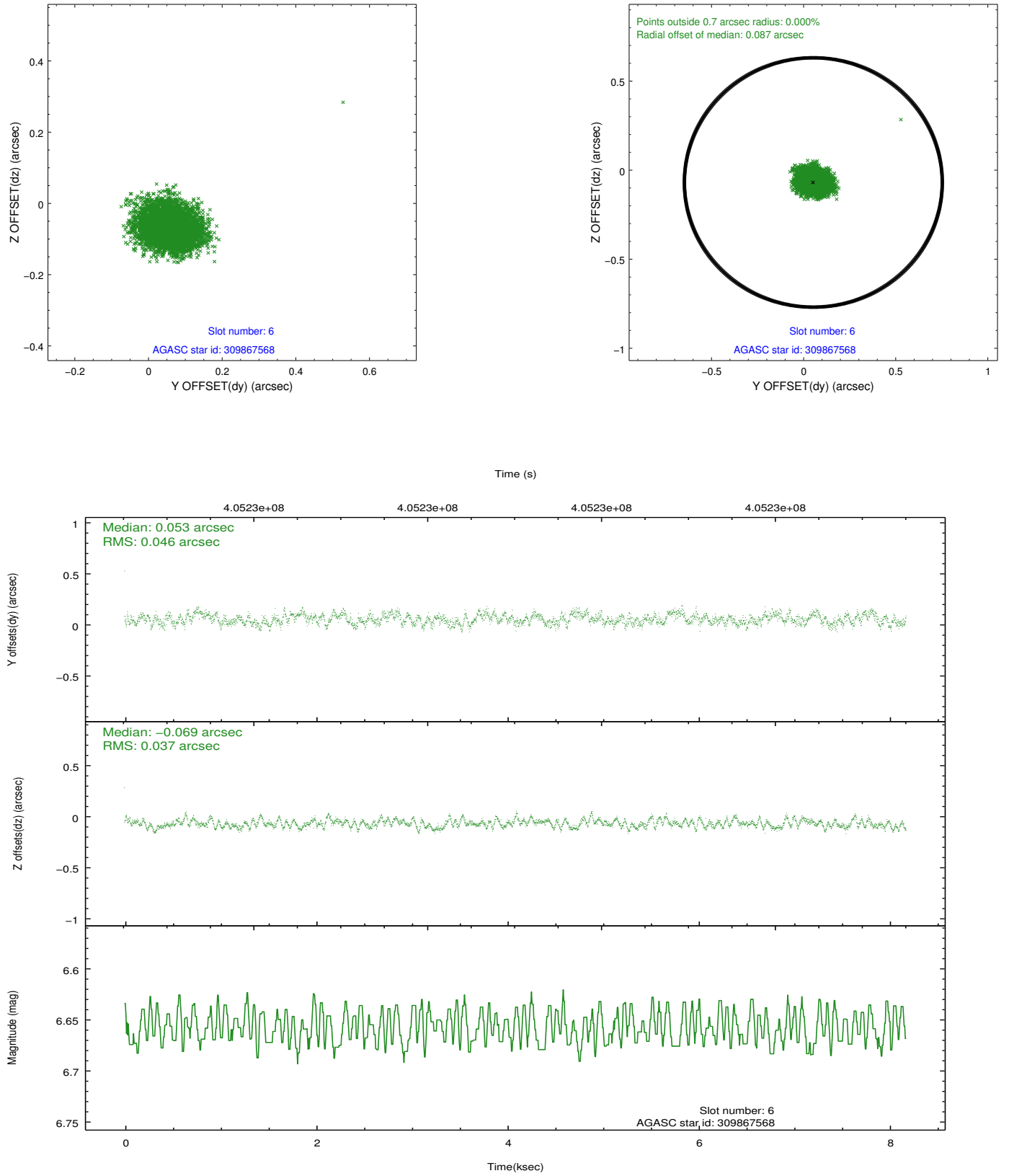
## 2.4.2 Slot 4



### 2.4.3 Slot 5

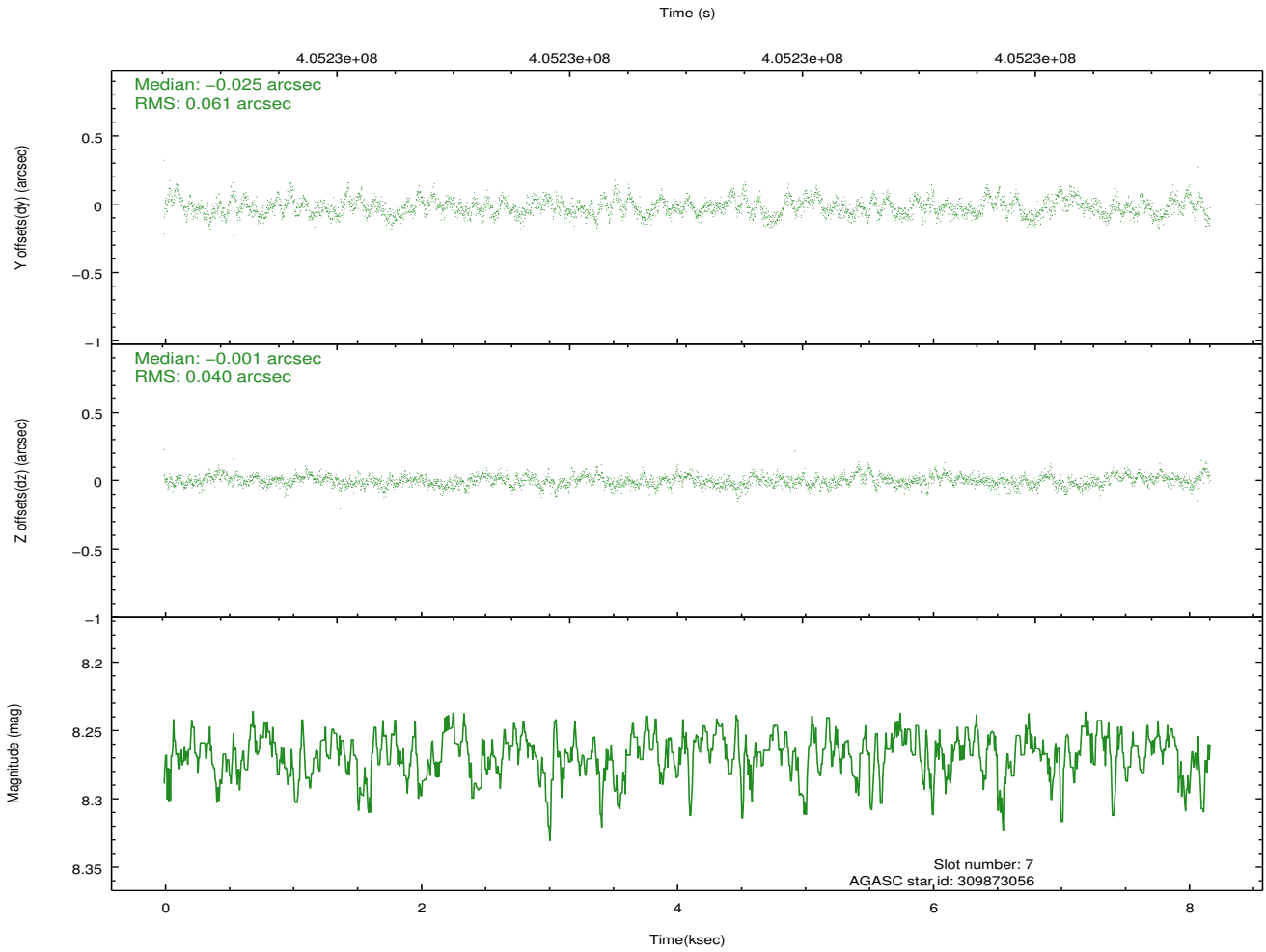
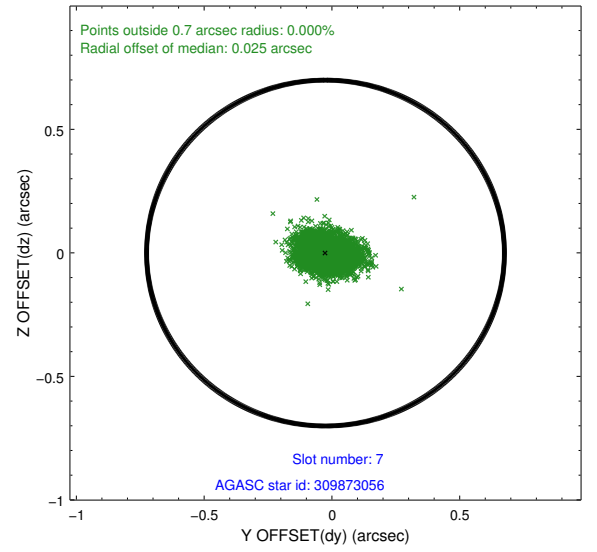
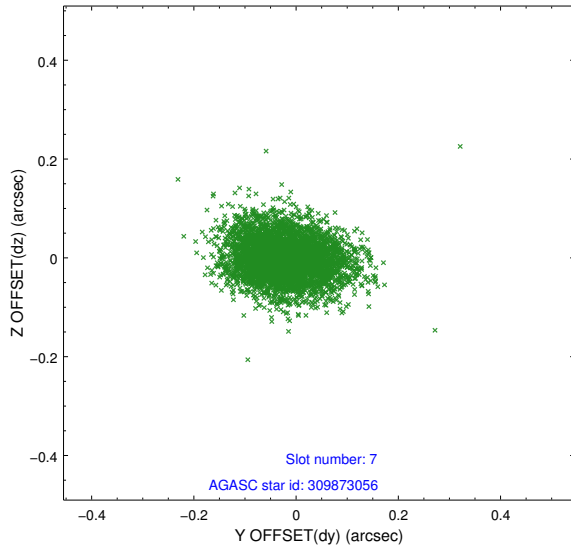


## 2.4.4 Slot 6



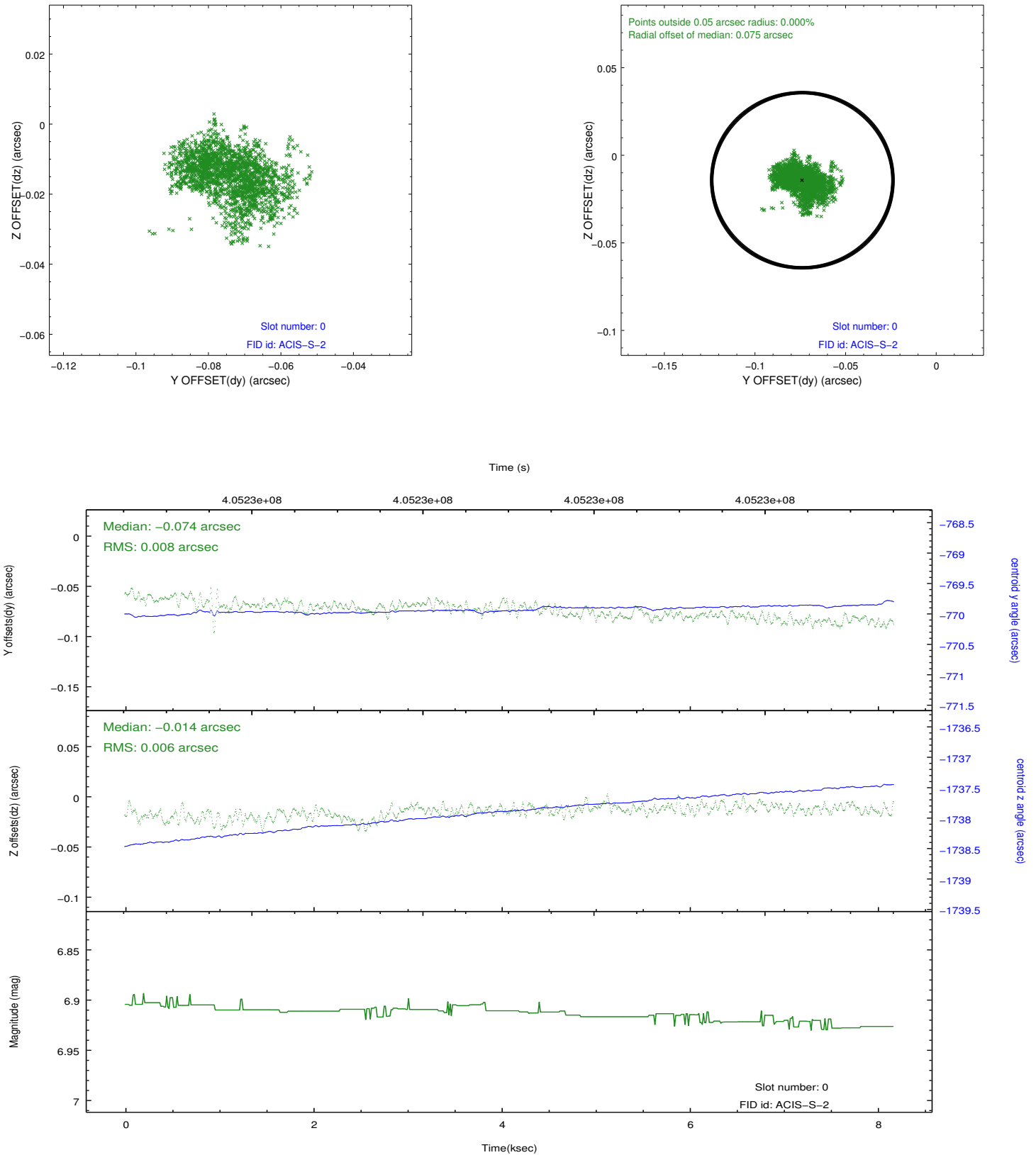


## 2.4.5 Slot 7

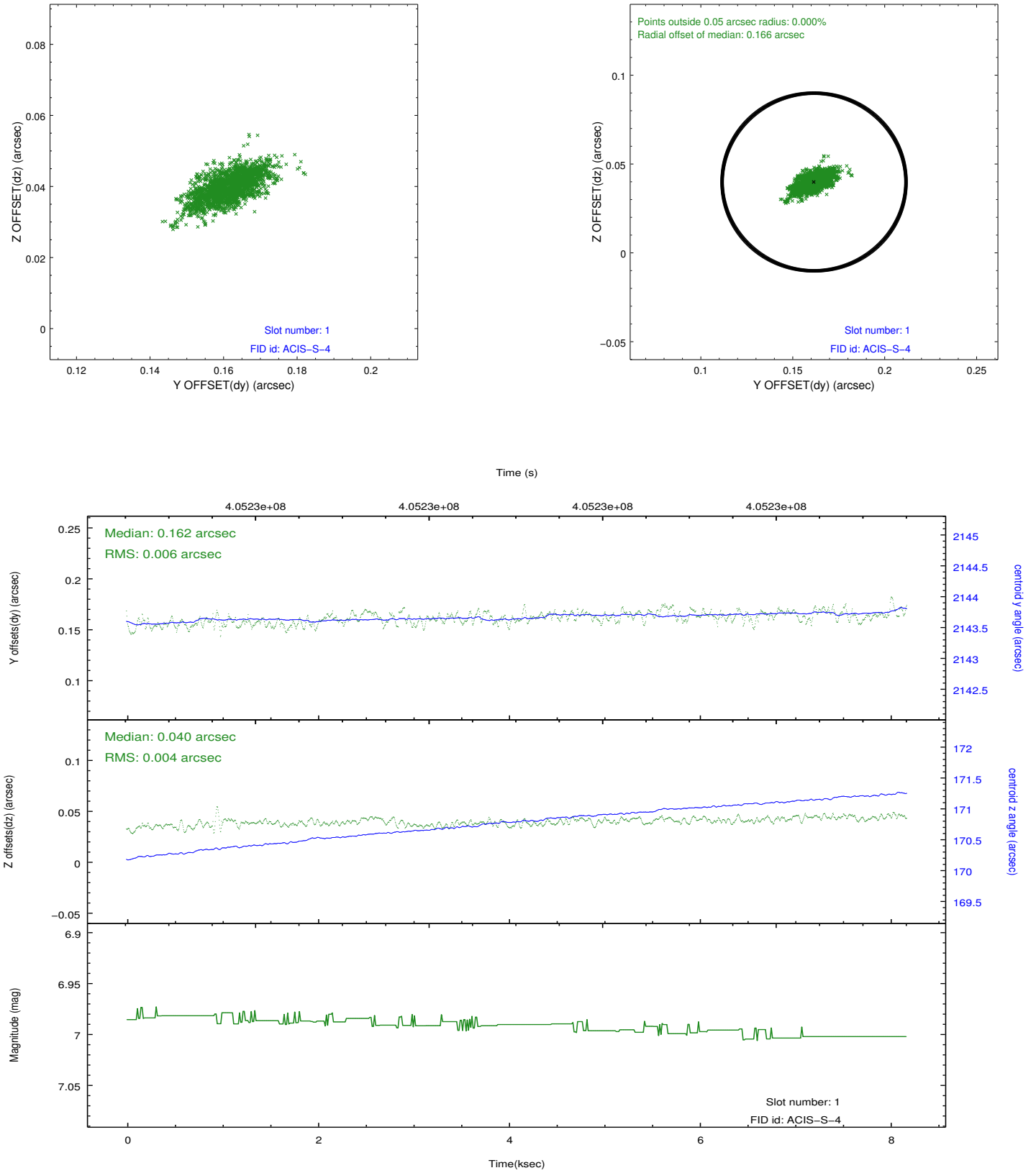


## 2.5 FID Slots

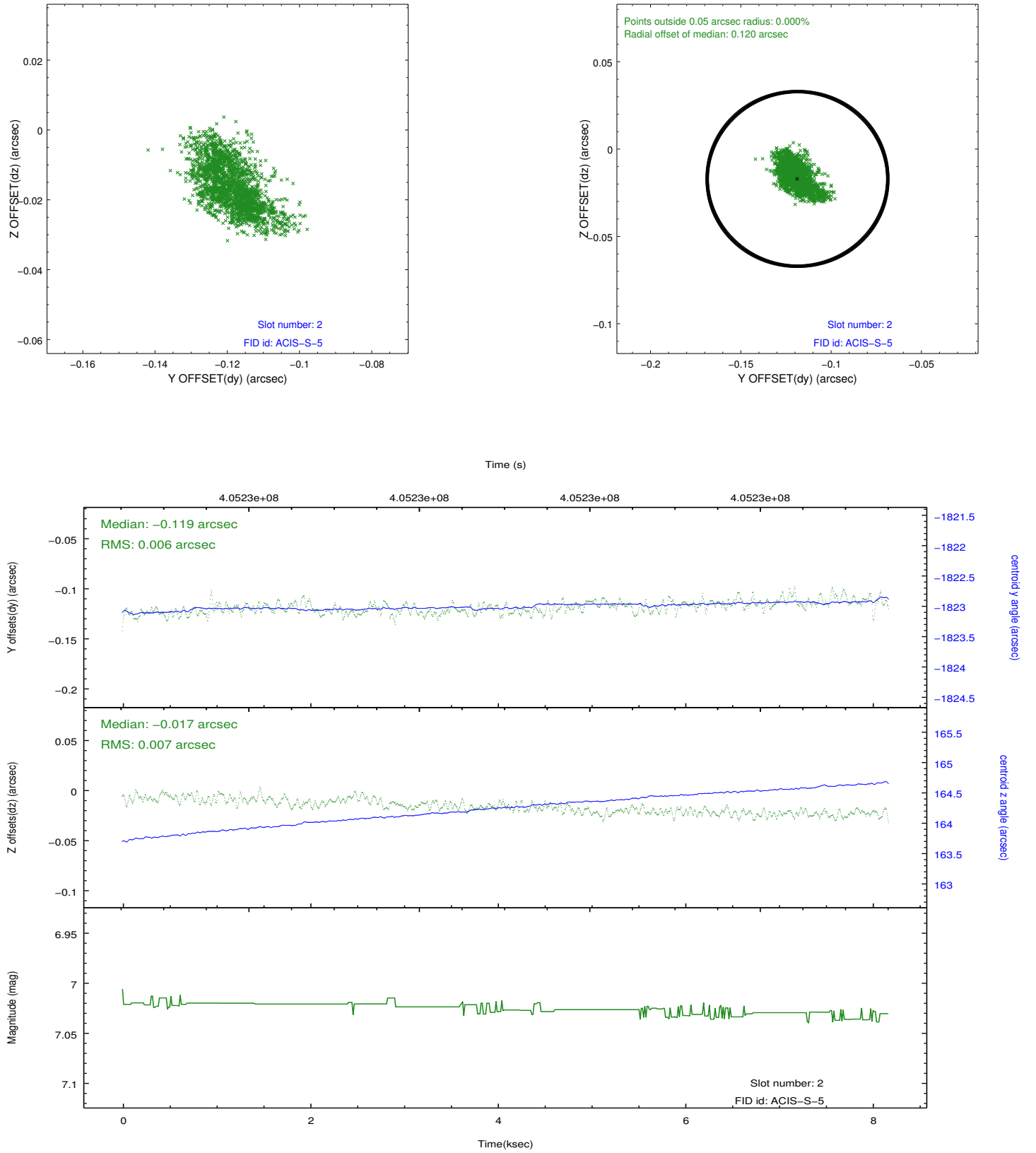
### 2.5.1 Slot 0



## 2.5.2 Slot 1



### 2.5.3 Slot 2



## A Summary

### A.1 Status

V&V Scientist	Beth Sundheim
V&V Date (YYYY-MM-DD)	2012.07.16
V&V Edition	1
V&V Disposition and Status	OK
V&V Charge Time	7.7903000599146

### A.2 Comments