

V&V Reference Report

L2 ASCDS Version : 8.4.5

Observation 12155 - L2 Version 2
Chandra X-Ray Center

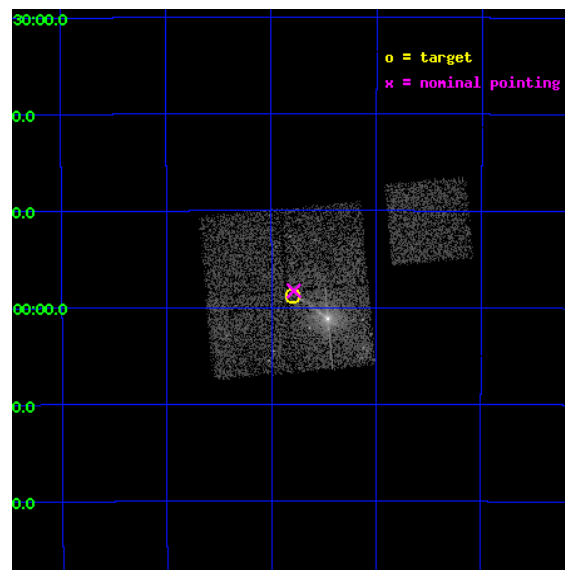
L2 Processing Date : Jul 8 2012

Contents

1	Front	2
2	OBI	3
2.1	OBI	3
2.1.1	Images	3
2.1.2	Bias	3
2.1.3	Parameters	4
2.1.4	Events	4
2.2	Compared Parameters	5
2.3	Aspect	6
2.4	Star Slots	9
2.4.1	Slot 3	9
2.4.2	Slot 4	10
2.4.3	Slot 5	11
2.4.4	Slot 6	12
2.4.5	Slot 7	13
2.5	FID Slots	14
2.5.1	Slot 0	14
2.5.2	Slot 1	15
2.5.3	Slot 2	16
A	Summary	17
A.1	Status	17
A.2	Comments	17

1 Front

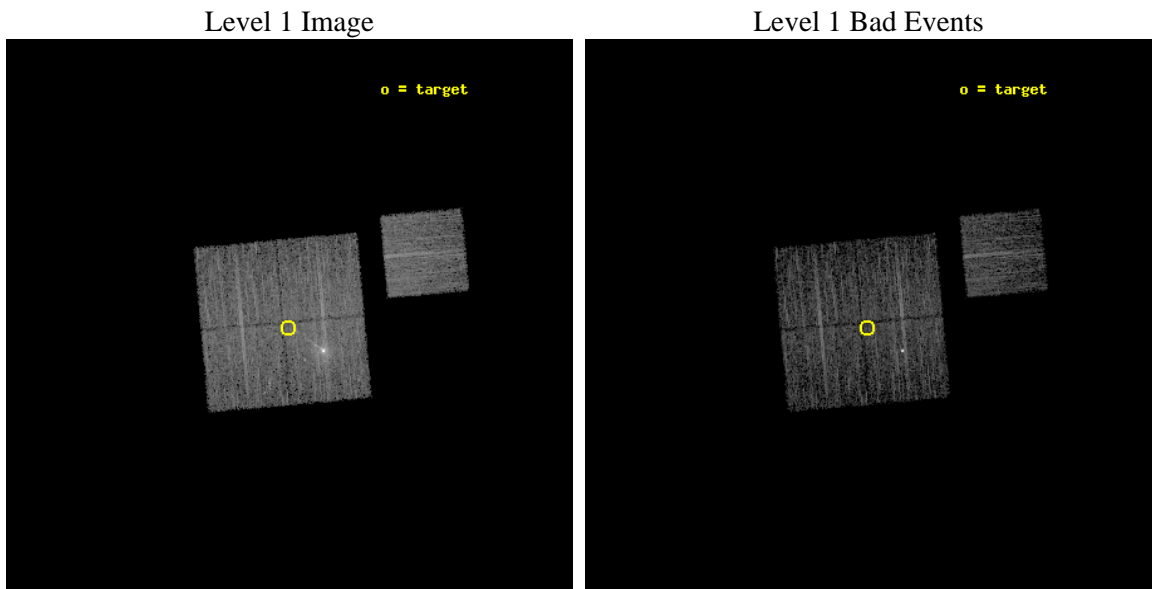
seq_num	702325	Sequence number
obs_id	12155	Observation id
title	Monitoring of the Jet and X-ray Binary Population of Centaurus A	P
observer	Dr. Stephen Murray	Principal investigator
object	Centaurus A	Source name
dtcycle	0	
cycle	P	events from which exps? Prim/Second/Both
ra_targ	201.44869	Observer's specified target RA [deg]
dec_targ	-42.979203	Observer's specified target Dec [deg]
ra_nom	201.44633968323	Nominal RA [deg]
dec_nom	-42.971333772734	Nominal Dec [deg]
roll_nom	84.907115973537	Nominal Roll [deg]
revision	2	Processing version of data
ontime	5053.0000388622	Sum of GTIs [s]
livetime	4986.97887339	Livetime [s]
ontime0	5049.8590784669	Sum of GTIs [s]
ontime1	5049.8590685129	Sum of GTIs [s]
ontime2	5053.0000388622	Sum of GTIs [s]
ontime3	5053.0000388622	Sum of GTIs [s]
ontime6	5053.0000388622	Sum of GTIs [s]
l2events	30013	Number of level 2 events



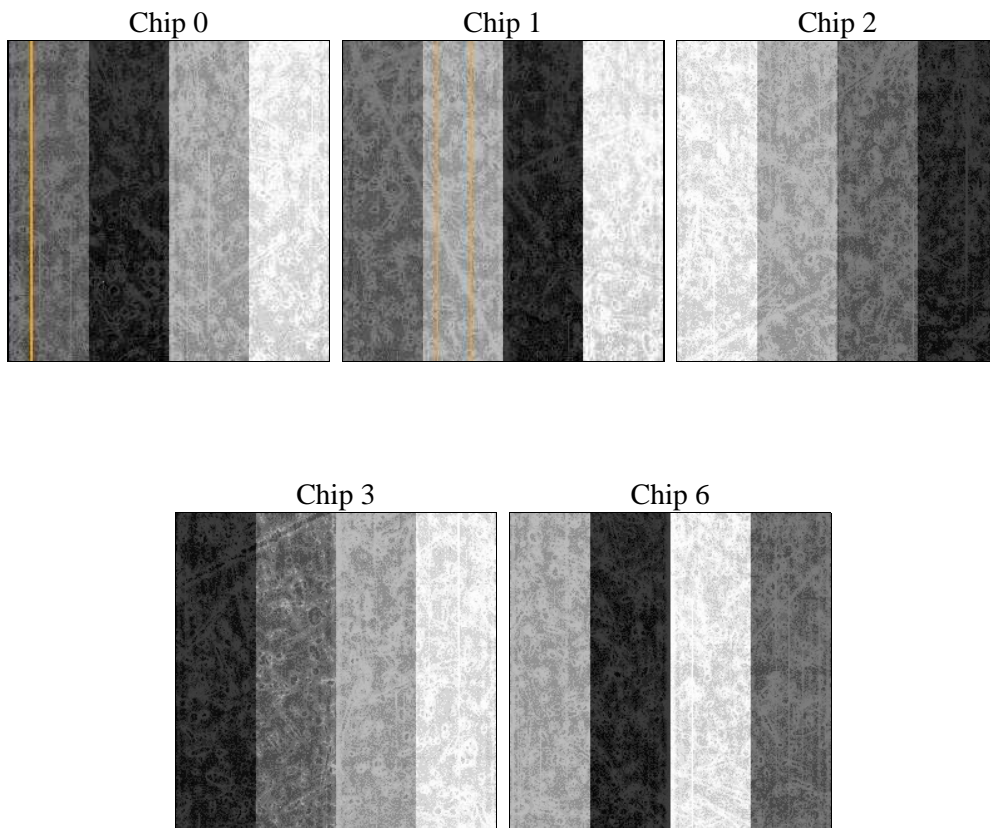
2 OBI

2.1 OBI

2.1.1 Images



2.1.2 Bias



2.1.3 Parameters

obi_num	0	Obi number	sched_exp_time	5000.575000	[s] Scheduled observation exposure time
ascdsver	8.4.5	Processing system revision	ontime	5053.0000388622	Sum of GTIs [s]
caldbver	4.5.0	 	ontime0	5049.8590784669	Sum of GTIs [s]
date	2012-07-08T19:20:35	Date and time of file creation	ontime1	5049.8590685129	Sum of GTIs [s]
revision	2	Processing version of data	ontime2	5053.0000388622	Sum of GTIs [s]
			ontime3	5053.0000388622	Sum of GTIs [s]
			ontime6	5053.0000388622	Sum of GTIs [s]
			l1events	188826	Number of level 1 events

2.1.4 Events

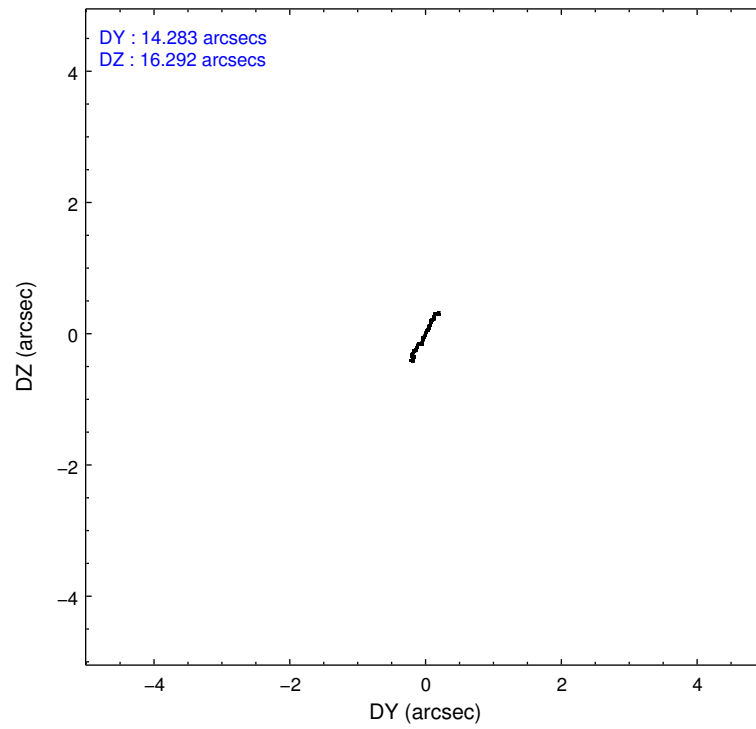
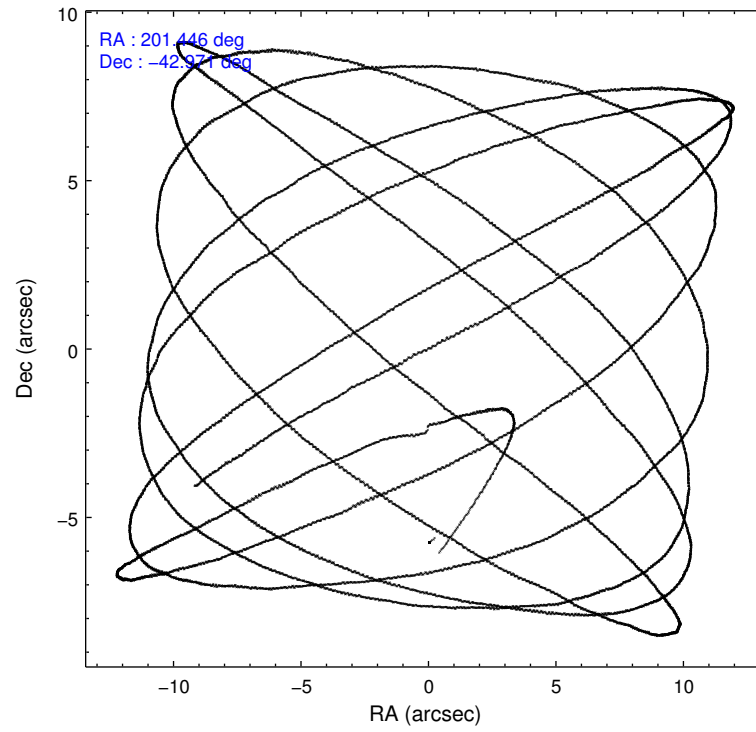
	ccd 0	ccd 1	ccd 2	ccd 3	ccd 6
level 1 events	33469	33685	37053	48645	35974
rejected events	29195	28583	32336	32891	31777
rejected %	87%	84%	87%	67%	88%

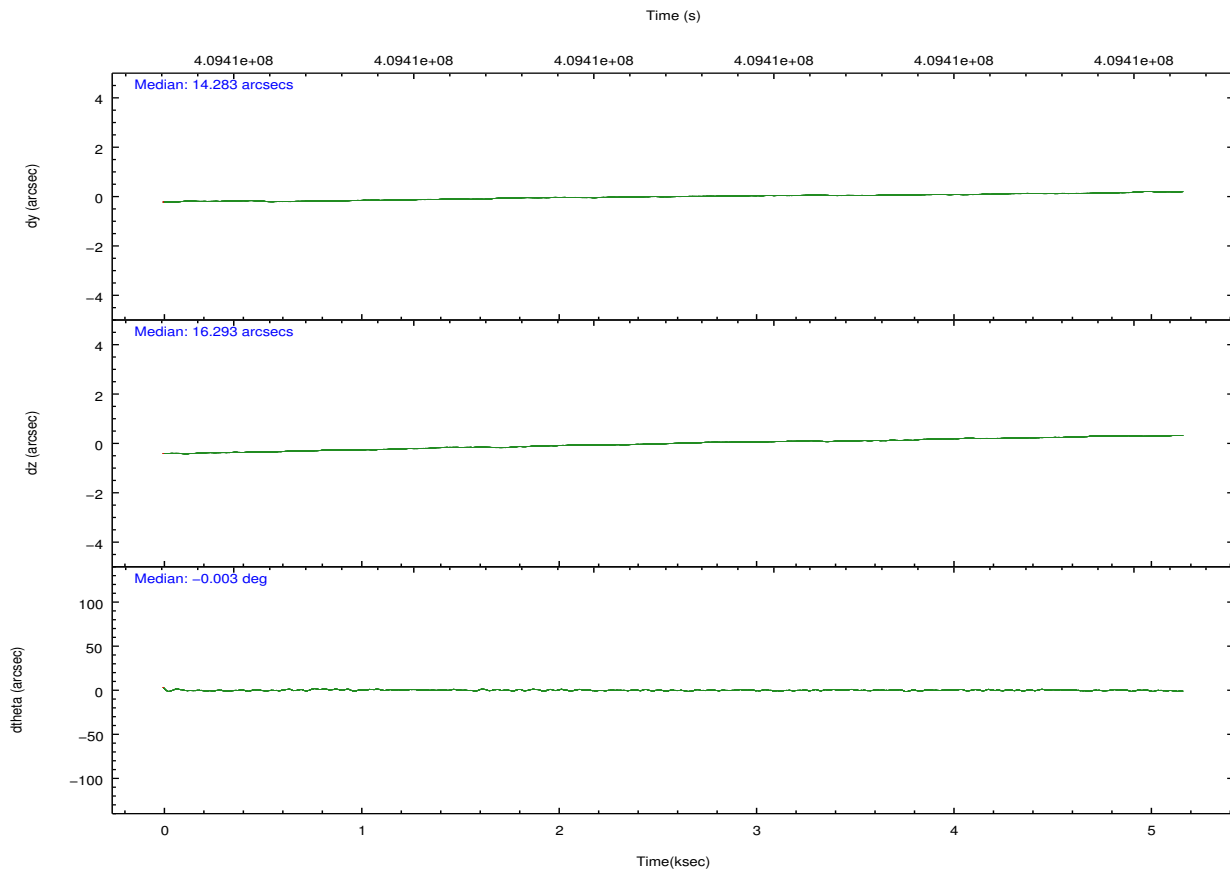
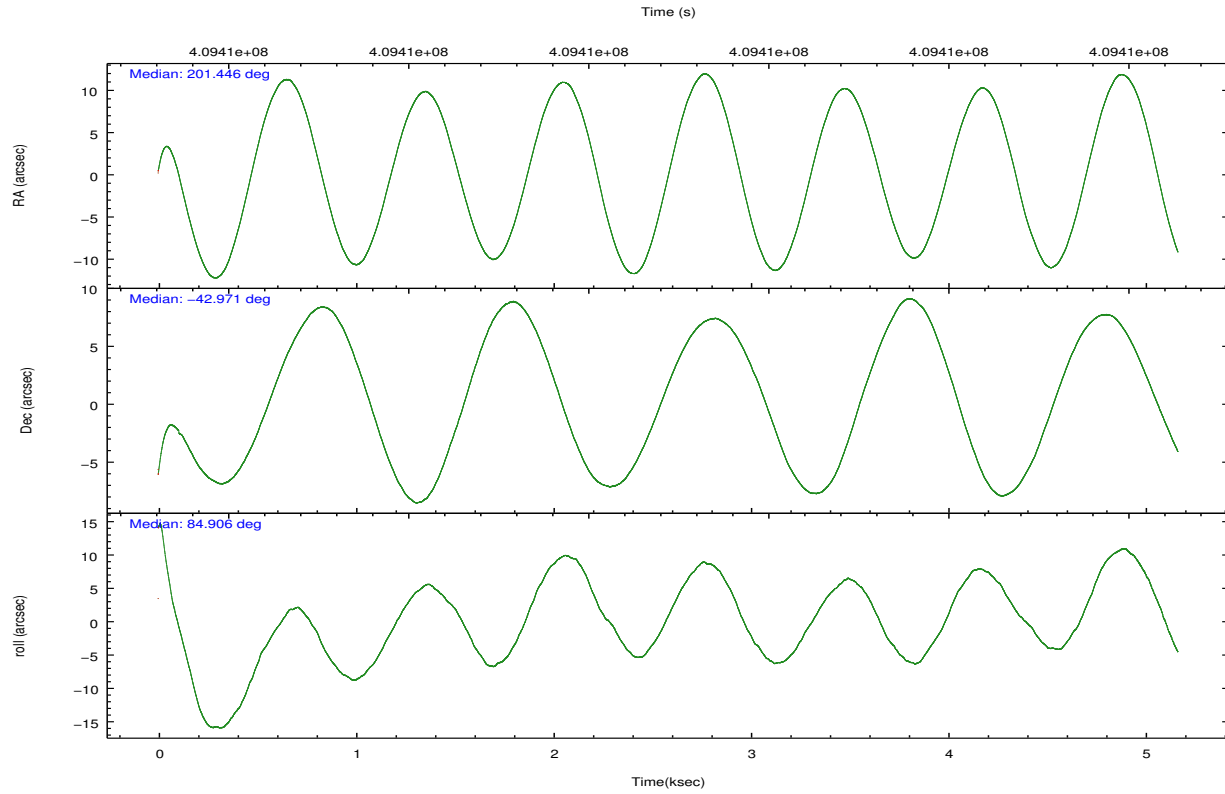
	ccd 0	ccd 1	ccd 2	ccd 3	ccd 6
grade 0 events	1686	2045	2090	9105	1562
	5%	6%	5%	18%	4%
grade 1 events	15	27	23	551	13
	0%	0%	0%	1%	0%
grade 2 events	988	1112	987	2467	913
	2%	3%	2%	5%	2%
grade 3 events	391	498	444	1072	455
	1%	1%	1%	2%	1%
grade 4 events	377	500	432	1053	395
	1%	1%	1%	2%	1%
grade 5 events	1486	1590	1448	2333	1625
	4%	4%	3%	4%	4%
grade 6 events	834	951	769	2072	881
	2%	2%	2%	4%	2%
grade 7 events	27692	26962	30860	29992	30130
	82%	80%	83%	61%	83%

2.2 Compared Parameters

Parameter	Planned	Actual	Parameter	Planned	Actual
Instrument	ACIS	ACIS	Obspar format version number	7	7
Detector	ACIS-01236	ACIS-01236	Obspar file type	PREDICTED	ACTUAL
Grating	NONE	NONE	Obspar update status	NONE	UPDATED
Data mode	FAINT	FAINT	Number of optional ACIS chips dropped	0	0
Observation mode	POINTING	POINTING	On-chip summing requested	N	N
[deg] Pointing RA	201.462331	201.4463396832331	Subarray requested	NONE	NONE
[deg] Pointing Dec	-42.996195	-42.971333772734	Alternating exposures requested	N	N
[deg] Pointing Roll	84.709303	84.90711597353661	[s] Primary exposure time	0.000000	3.1
[mm] SIM focus pos	-0.782348	-0.7809083437167272			
[mm] SIM defocus	0	0.001439871863259334			
[mm] SIM translation stage pos	-233.592463	-233.5874344608287			
[mm] SIM translation stage offset	0	-0.005018542100998502			
[s] Observation start time (MET)	409409024.184000	409407401.39276			
Observation start date	2010-12-22T12:42:38	2010-12-22T12:16:41			
[s] Observation end time (MET)	409414024.184000	409414261.71811			
Observation end date	2010-12-22T14:05:58	2010-12-22T14:11:01			
Read mode	TIMED	TIMED			

2.3 Aspect



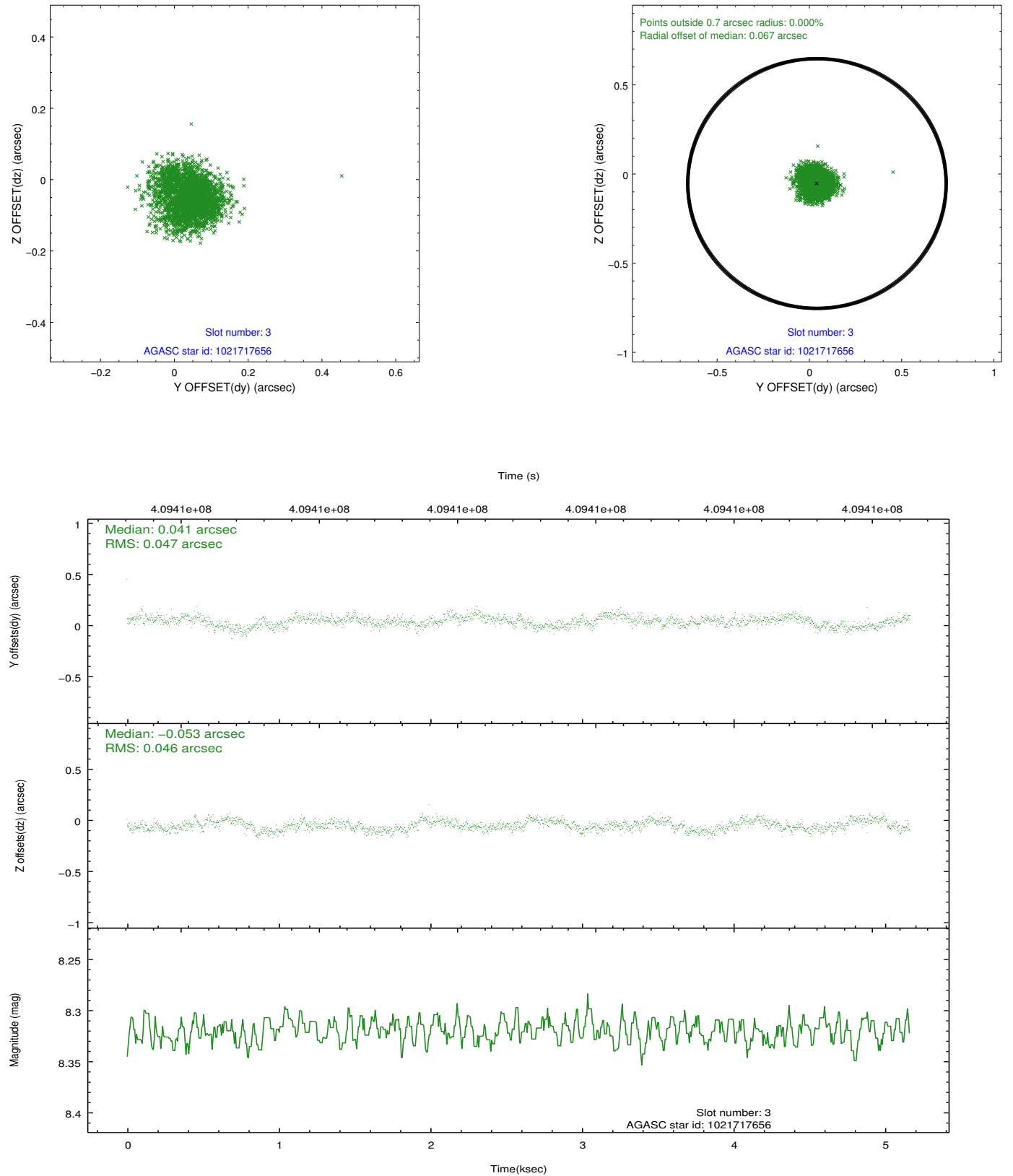


Slot Statistics

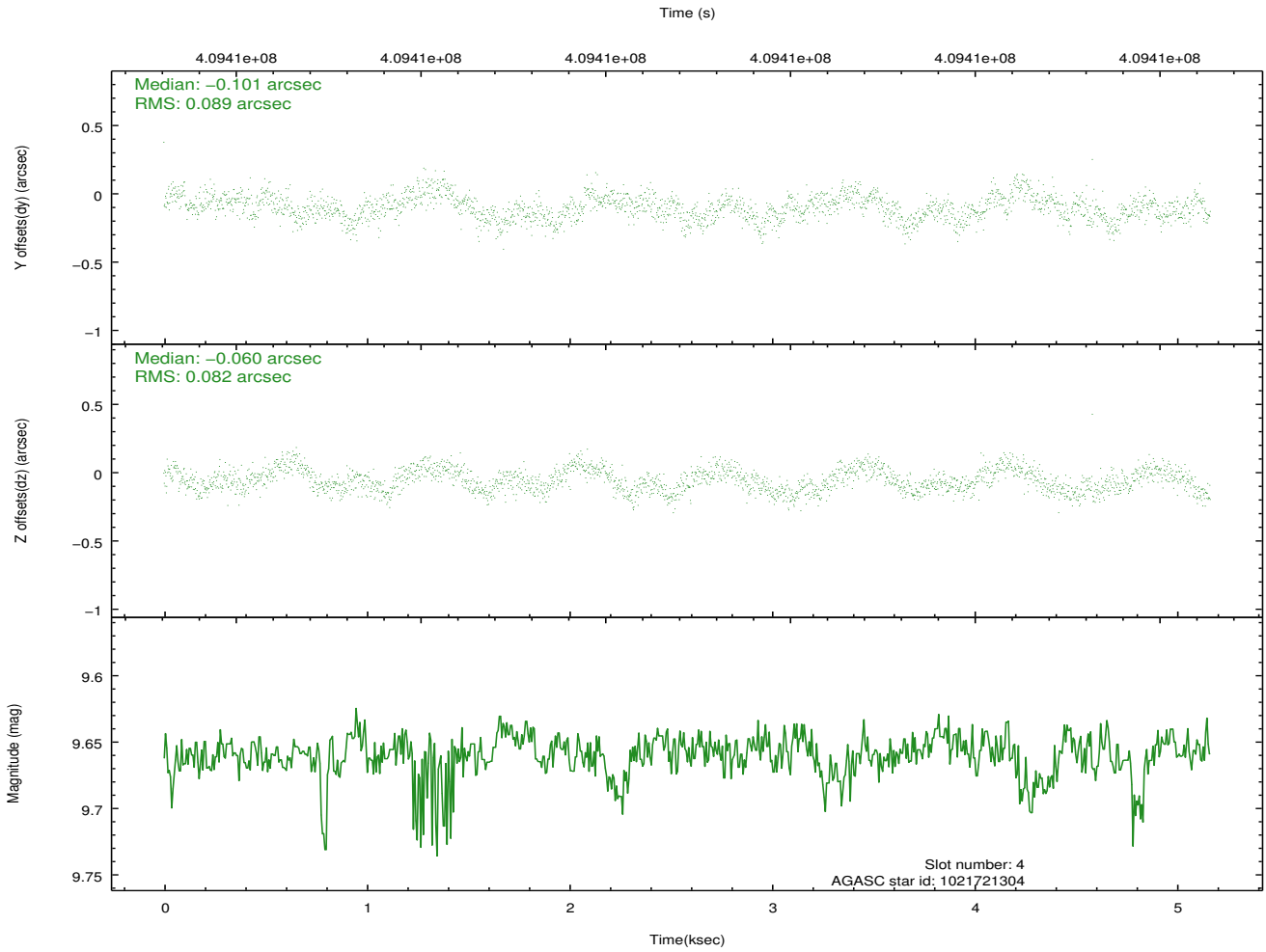
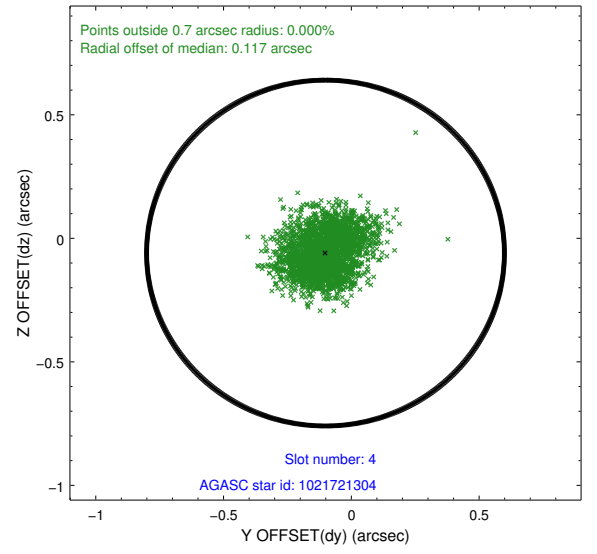
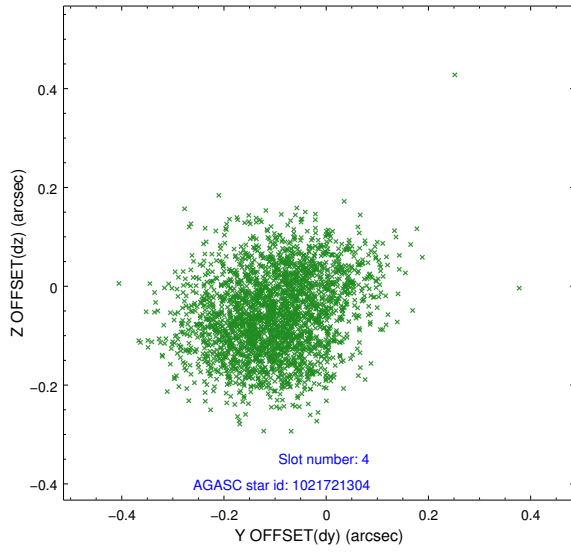
slot	status	id	mag	n_pts	med_dy	med_dz	dr1	dr2	ra	dec	mean_y	mean_z
0	FID	ACIS-I-1	7.07	1261	0.005	-0.095	0.011	0.018	0.000000	0.000000	925.23	-839.99
1	FID	ACIS-I-4	6.99	1261	0.147	0.087	0.012	0.022	0.000000	0.000000	2146.04	1059.42
2	FID	ACIS-I-5	7.07	1261	-0.251	0.078	0.011	0.023	0.000000	0.000000	-1821.55	1058.56
3	GUIDE	1021717656	8.32	2521	0.041	-0.053	0.071	0.111	201.139642	-43.082878	-390.29	815.99
4	GUIDE	1021721304	9.66	2518	-0.101	-0.060	0.129	0.205	201.117326	-42.480412	1762.60	1083.60
5	GUIDE	1021721672	9.54	2519	0.311	0.099	0.176	0.260	201.740358	-43.079729	-232.02	-755.06
6	GUIDE	1022235840	9.42	2517	-0.120	0.105	0.129	0.198	201.679306	-43.544276	-1913.15	-745.89
7	GUIDE	1021716808	8.81	2510	-0.127	-0.087	0.104	0.161	200.901189	-42.531395	1523.16	1636.11

2.4 Star Slots

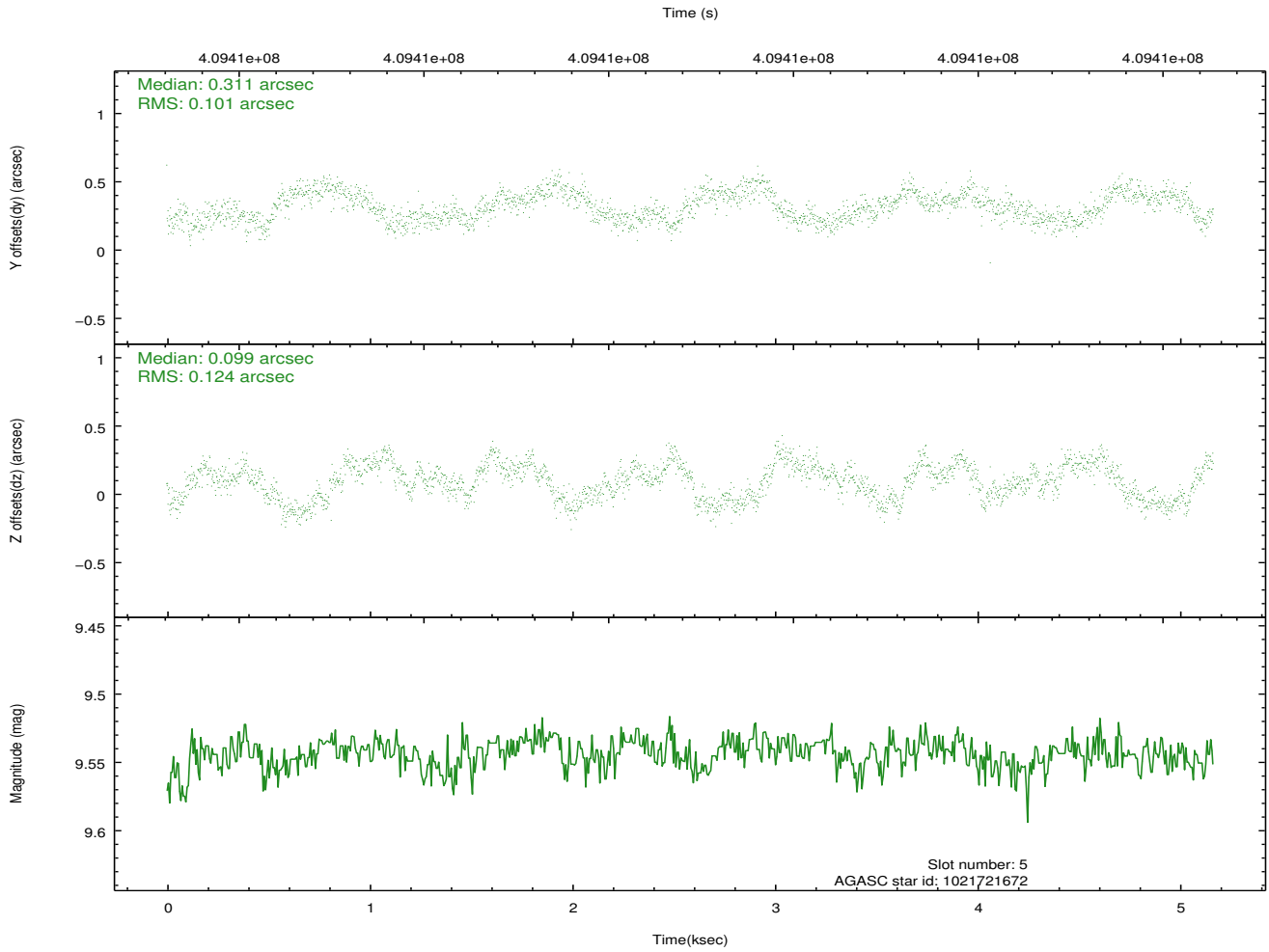
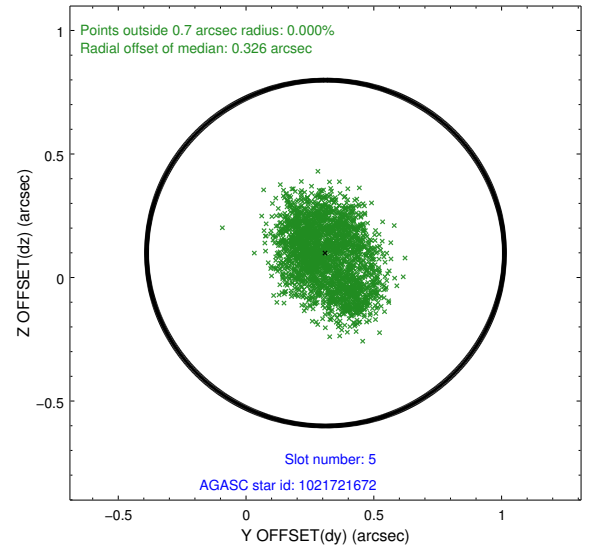
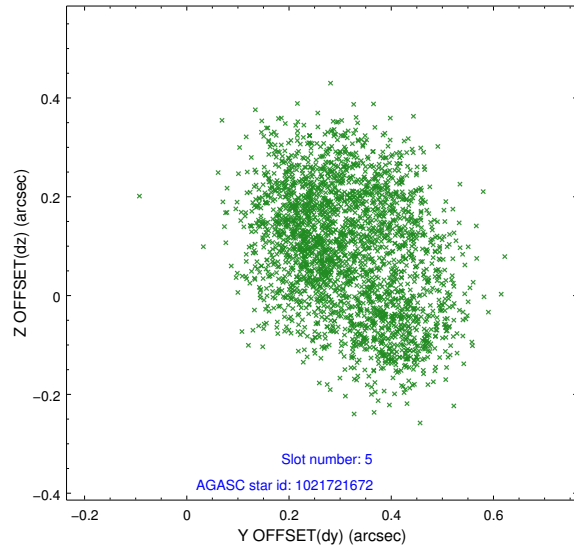
2.4.1 Slot 3



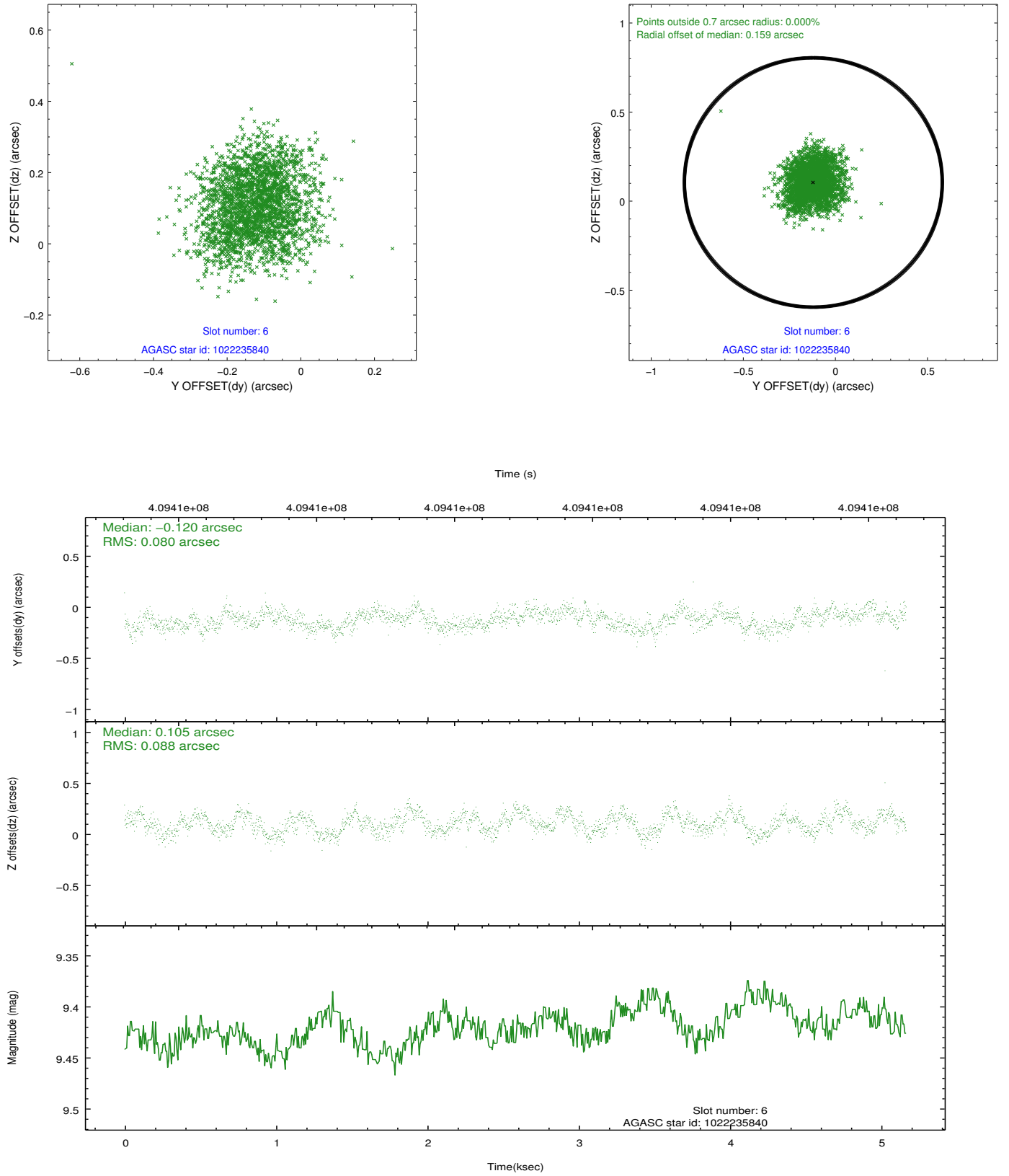
2.4.2 Slot 4



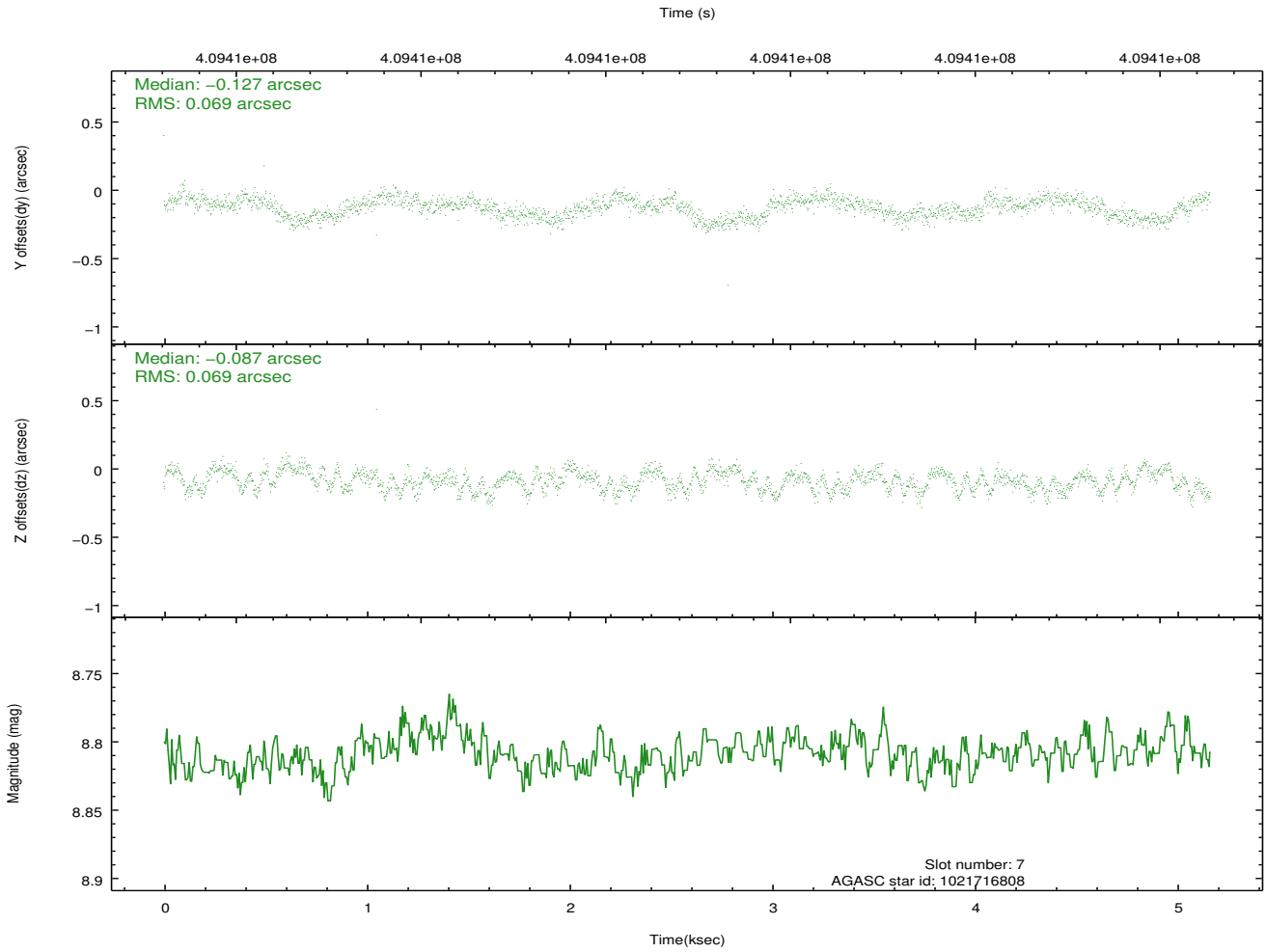
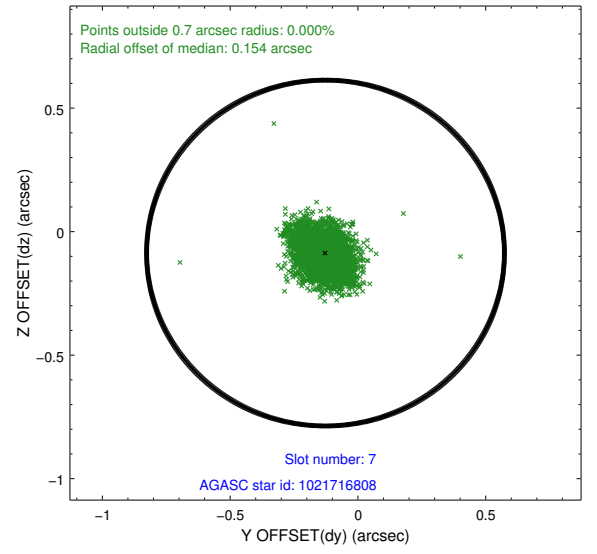
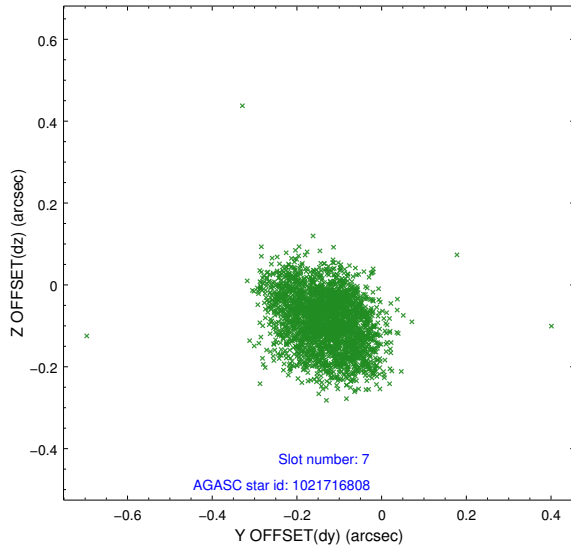
2.4.3 Slot 5



2.4.4 Slot 6

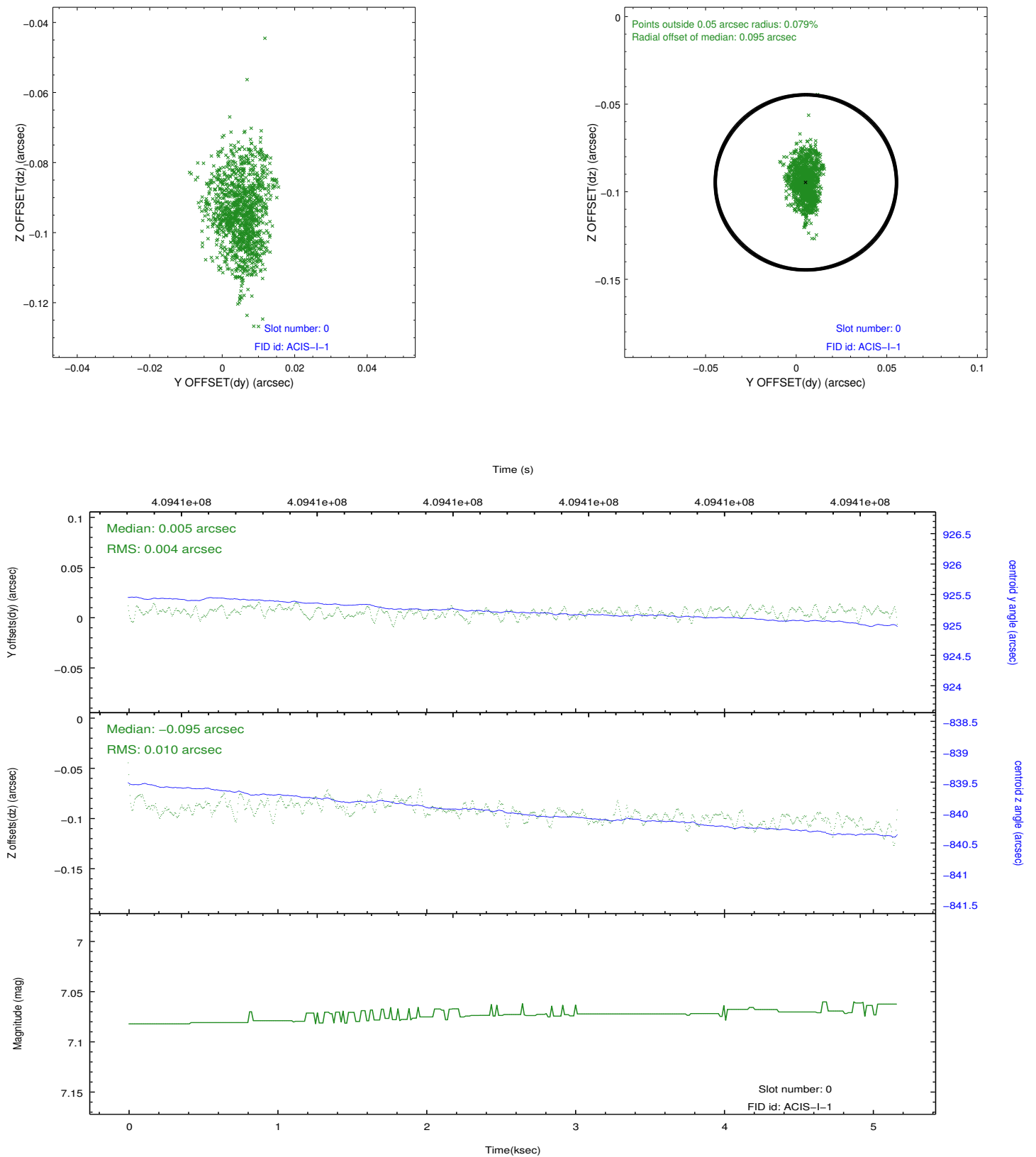


2.4.5 Slot 7

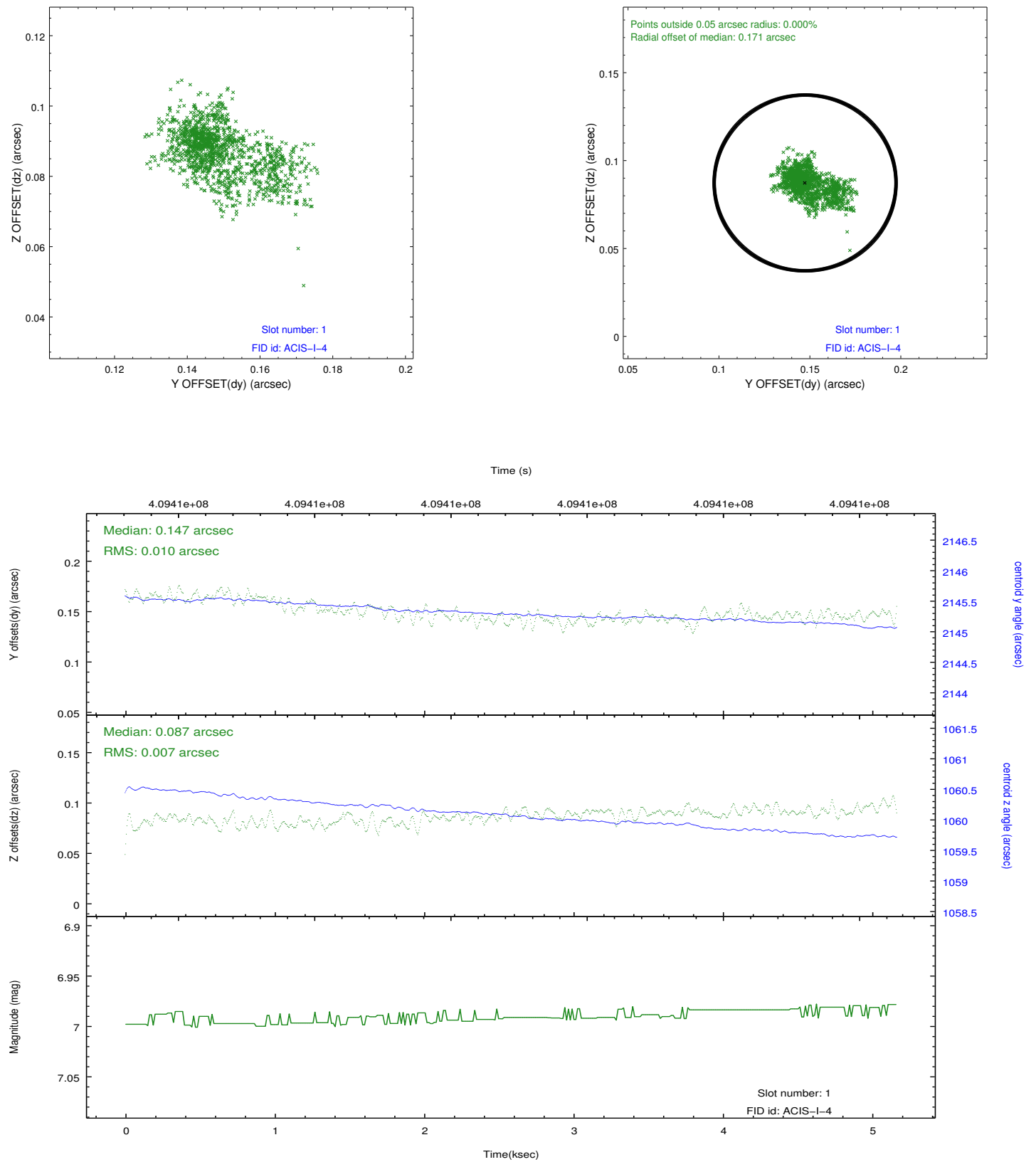


2.5 FID Slots

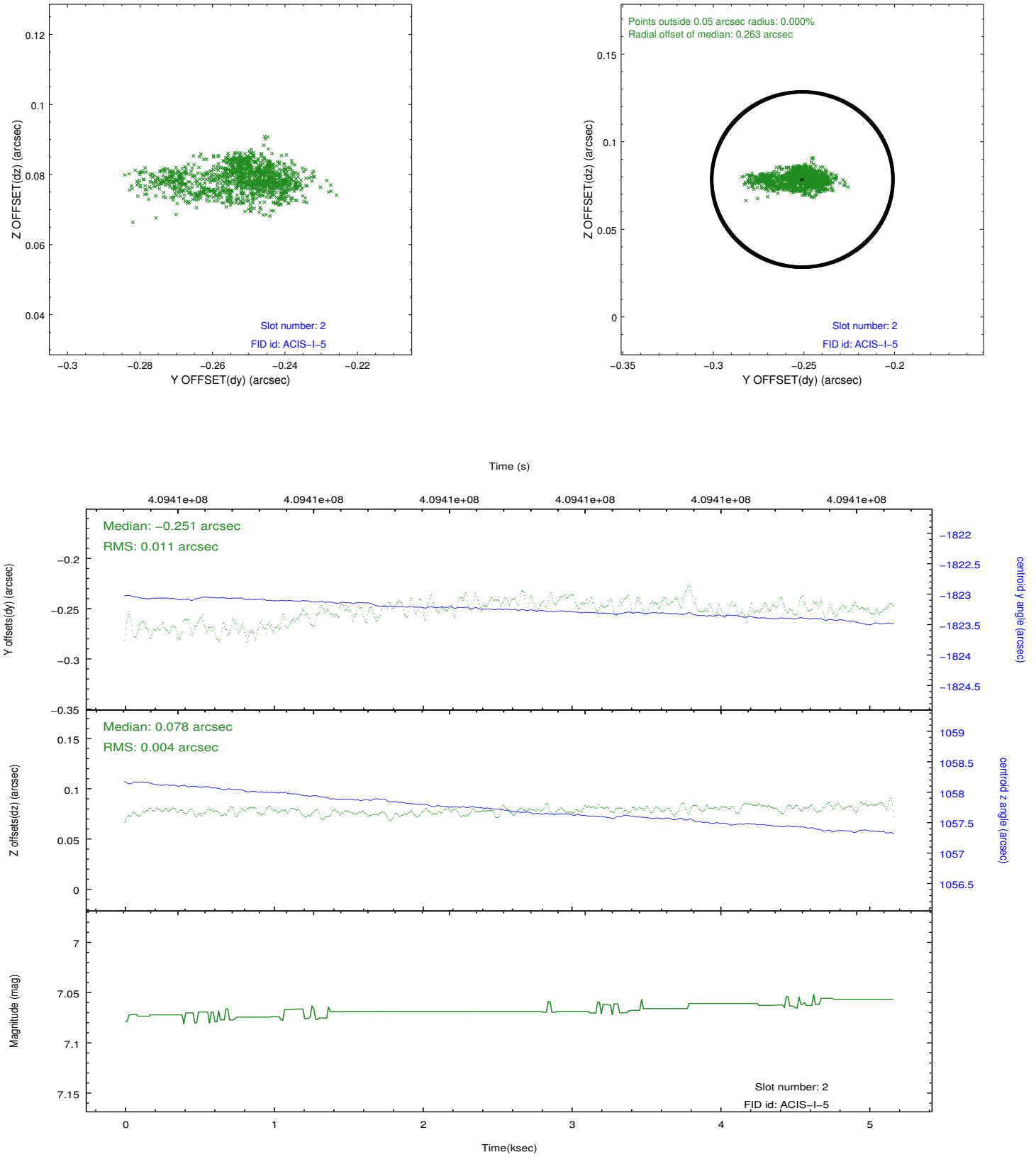
2.5.1 Slot 0



2.5.2 Slot 1



2.5.3 Slot 2



A Summary

A.1 Status

V&V Scientist	Jen Lauer
V&V Date (YYYY-MM-DD)	2012.07.17
V&V Edition	1
V&V Disposition and Status	OK
V&V Charge Time	5.0530000388622

A.2 Comments