

V&V Reference Report

L2 ASCDS Version : 8.4.5

Observation 13188 - L2 Version 2
Chandra X-Ray Center

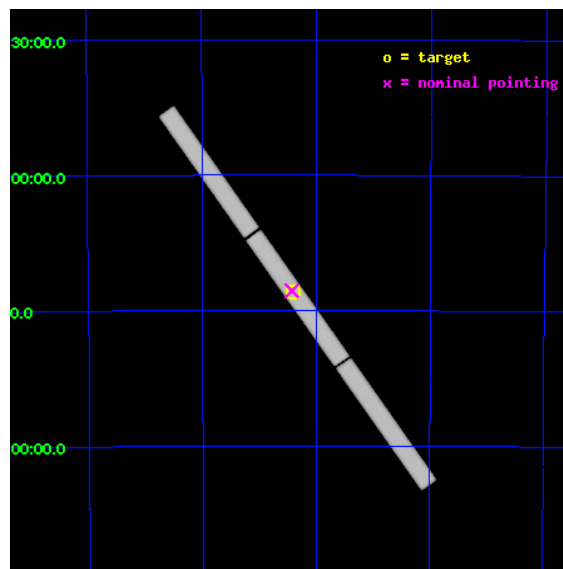
L2 Processing Date : Jul 7 2012

Contents

1	Front	2
2	OBI	3
2.1	OBI	3
2.1.1	Images	3
2.1.2	Parameters	4
2.1.3	Events	4
2.2	Compared Parameters	5
2.3	Aspect	6
2.4	Star Slots	9
2.4.1	Slot 3	9
2.4.2	Slot 4	10
2.4.3	Slot 5	11
2.4.4	Slot 6	12
2.4.5	Slot 7	13
2.5	FID Slots	14
2.5.1	Slot 0	14
2.5.2	Slot 1	15
2.5.3	Slot 2	16
3	Gratings	17
3.1	LETG Arm	17
A	Summary	19
A.1	Status	19
A.2	Comments	19

1 Front

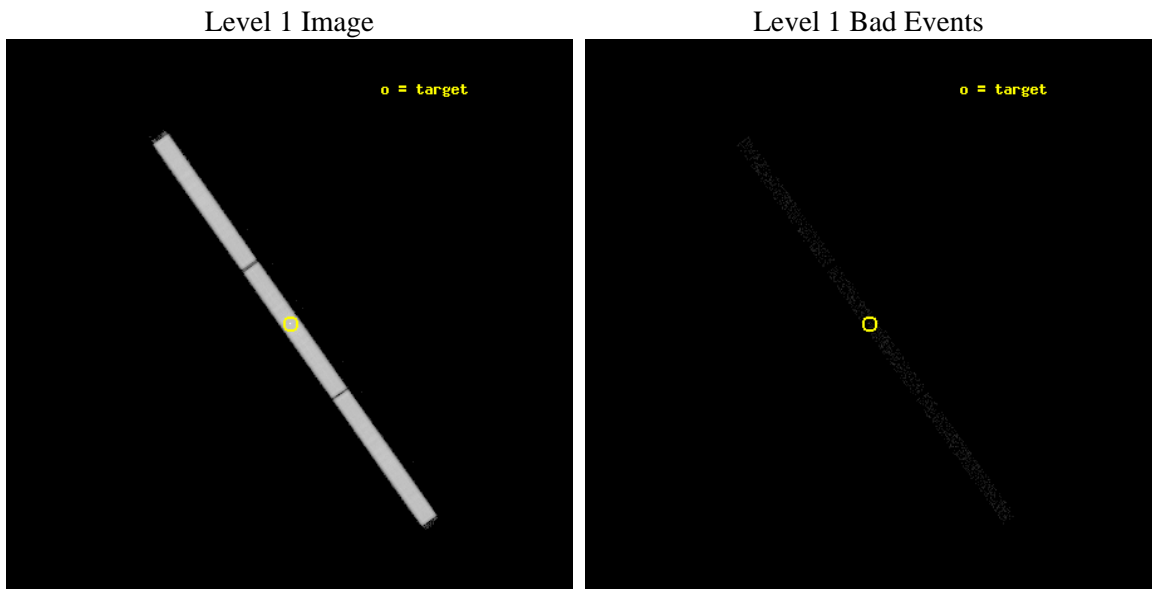
seq_num	501541	Sequence number
obs_id	13188	Observation id
title	RXJ0720.4-3125: a precessing isolated neutron star?	Proposal title
observer	Dr. Peter Predehl	Principal investigator
object	RXJ0720.4-3125	Source name
ra_targ	110.104167	Observer's specified target RA [deg]
dec_targ	-31.430611	Observer's specified target Dec [deg]
ra_nom	110.10746452129	Nominal RA [deg]
dec_nom	-31.426765847767	Nominal Dec [deg]
roll_nom	54.469059717948	Nominal Roll [deg]
revision	2	Processing version of data
ontime	14152.431979179	[s]
livetime	14022.223128945	Ontime multiplied by DTCOR
l2events	1111775	Number of level 2 events



2 OBI

2.1 OBI

2.1.1 Images



2.1.2 Parameters

obi_num	0	Obi number	sched_exp_time	14000.000000	[s] Scheduled observation exposure time
ascdsver	8.4.5	Processing system revision	ontime	14152.431979179	[s]
caldsver	4.5.0	 	l1events	1521986	Number of level 1 events
date	2012-07-07T03:22:32	Date and time of file creation			
revision	2	Processing version of data			

2.1.3 Events

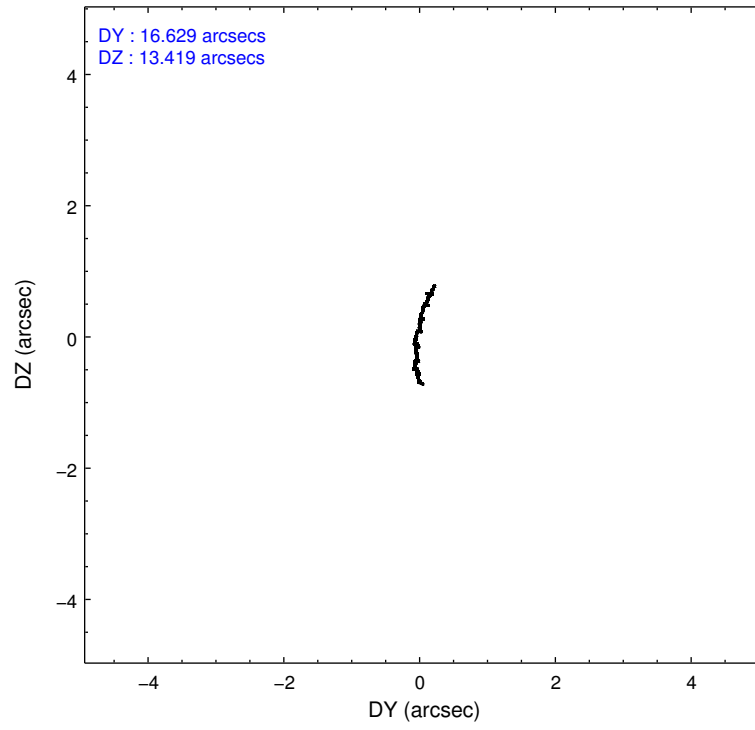
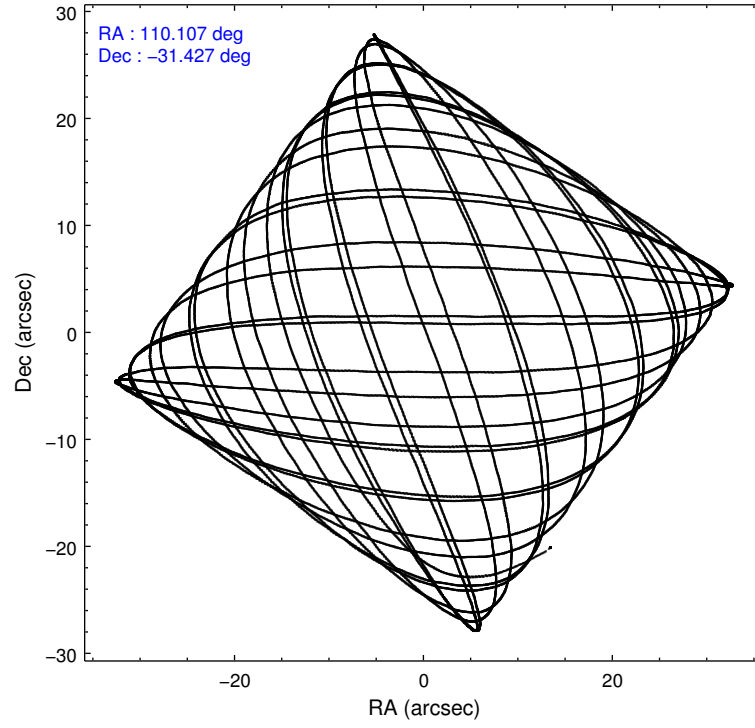
Level 1 Events

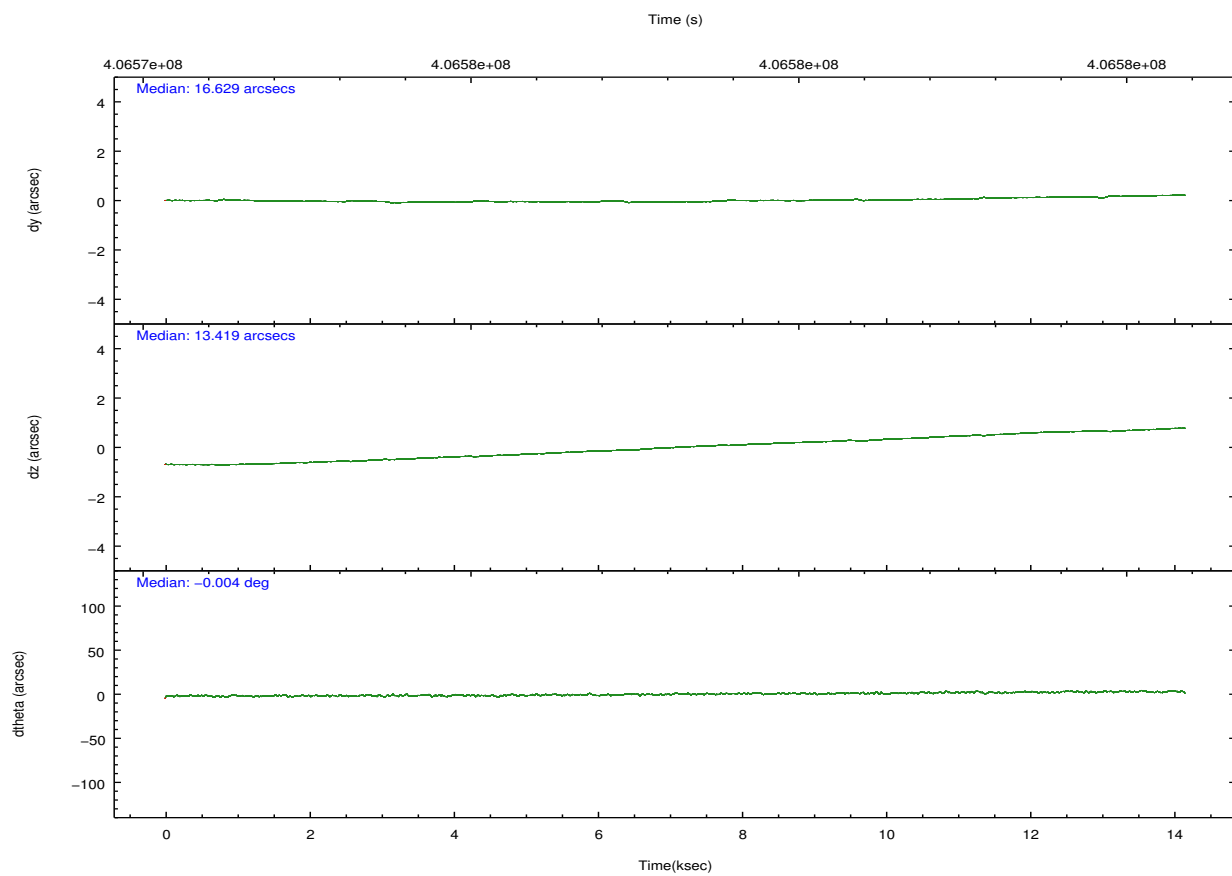
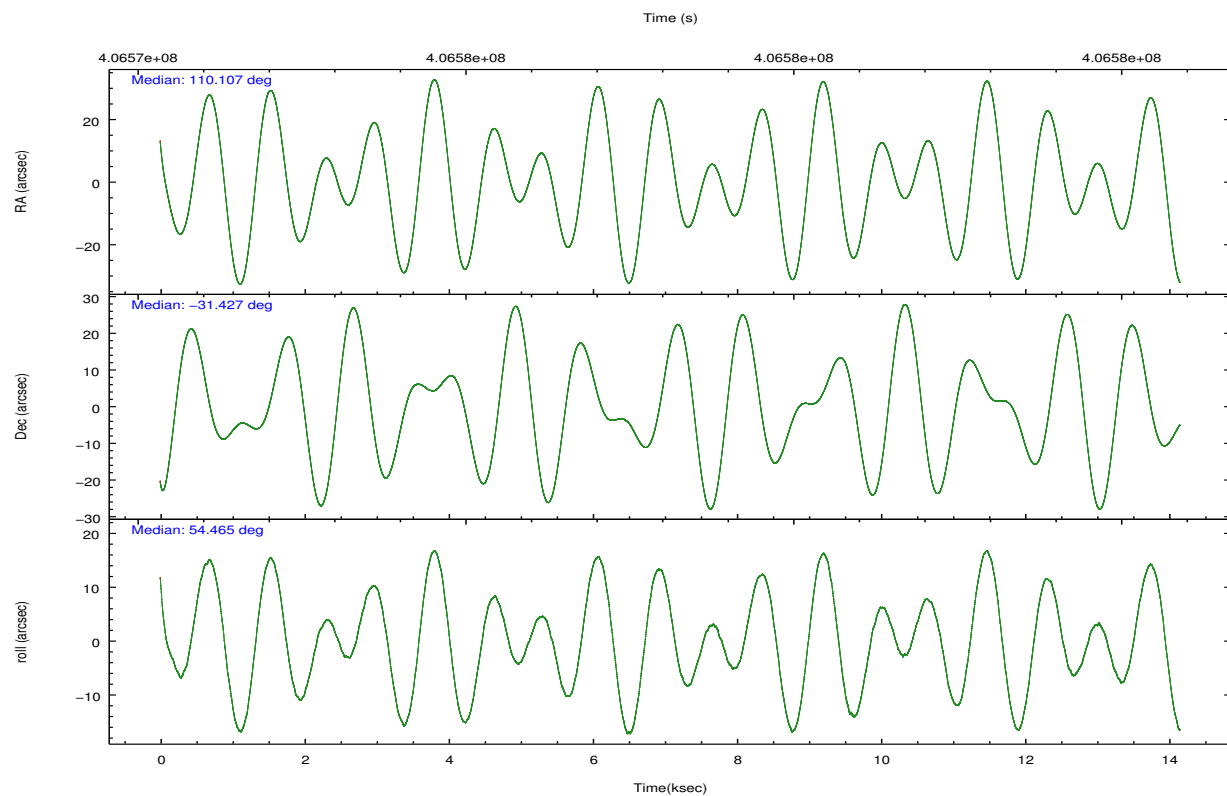
	segment 1	segment 2	segment 3
level 1 events	506001	507500	508485
rejected events	30477	30295	30784
rejected %	6%	5%	6%

2.2 Compared Parameters

Parameter	Planned	Actual	Parameter	Planned	Actual
Instrument	HRC	HRC	Obspar format version number	7	7
Detector	HRC-S	HRC-S	Obspar file type	PREDICTED	ACTUAL
Grating	LETG	LETG	Obspar update status	NONE	UPDATED
Data mode	OBSERVING	OBSERVING			
Observation mode	POINTING	POINTING			
[deg] Pointing RA	110.105909	110.1074645212942			
[deg] Pointing Dec	-31.455452	-31.42676584776741			
[deg] Pointing Roll	54.400909	54.46905971794799			
[mm] SIM focus pos	-1.429586	-1.428180813131781			
[mm] SIM defocus	0.1037507710433287	0.1051558262725154			
[mm] SIM translation stage pos	250.455976	250.466033080201			
[mm] SIM translation stage offset	0	-0.01005468664627074			
[s] Observation start time (MET)	406571181.184000	406570163.32144			
Observation start date	2010-11-19T16:25:15	2010-11-19T16:09:23			
[s] Observation end time (MET)	406585181.184000	406585900.14725			
Observation end date	2010-11-19T20:18:35	2010-11-19T20:31:40			

2.3 Aspect



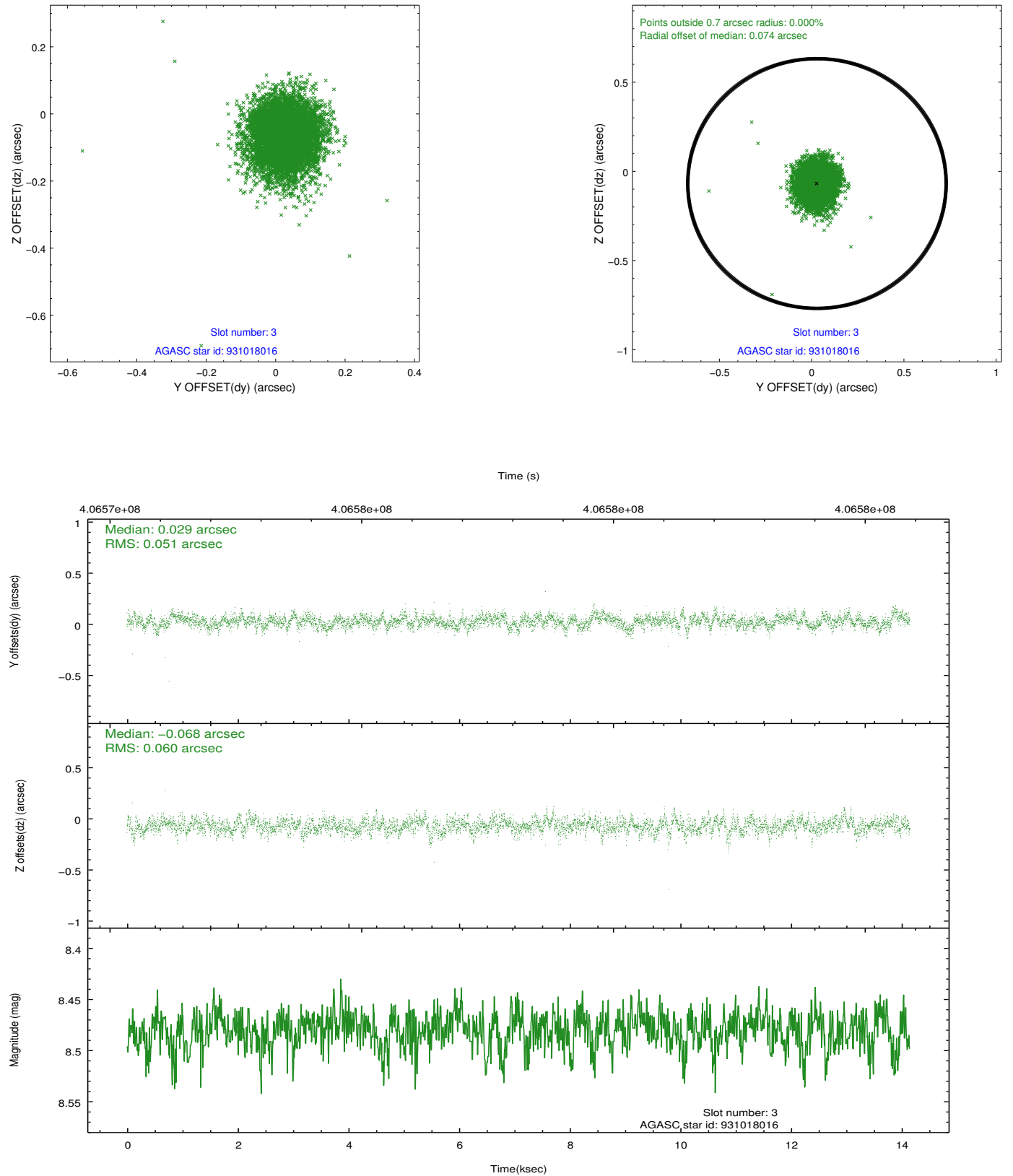


Slot Statistics

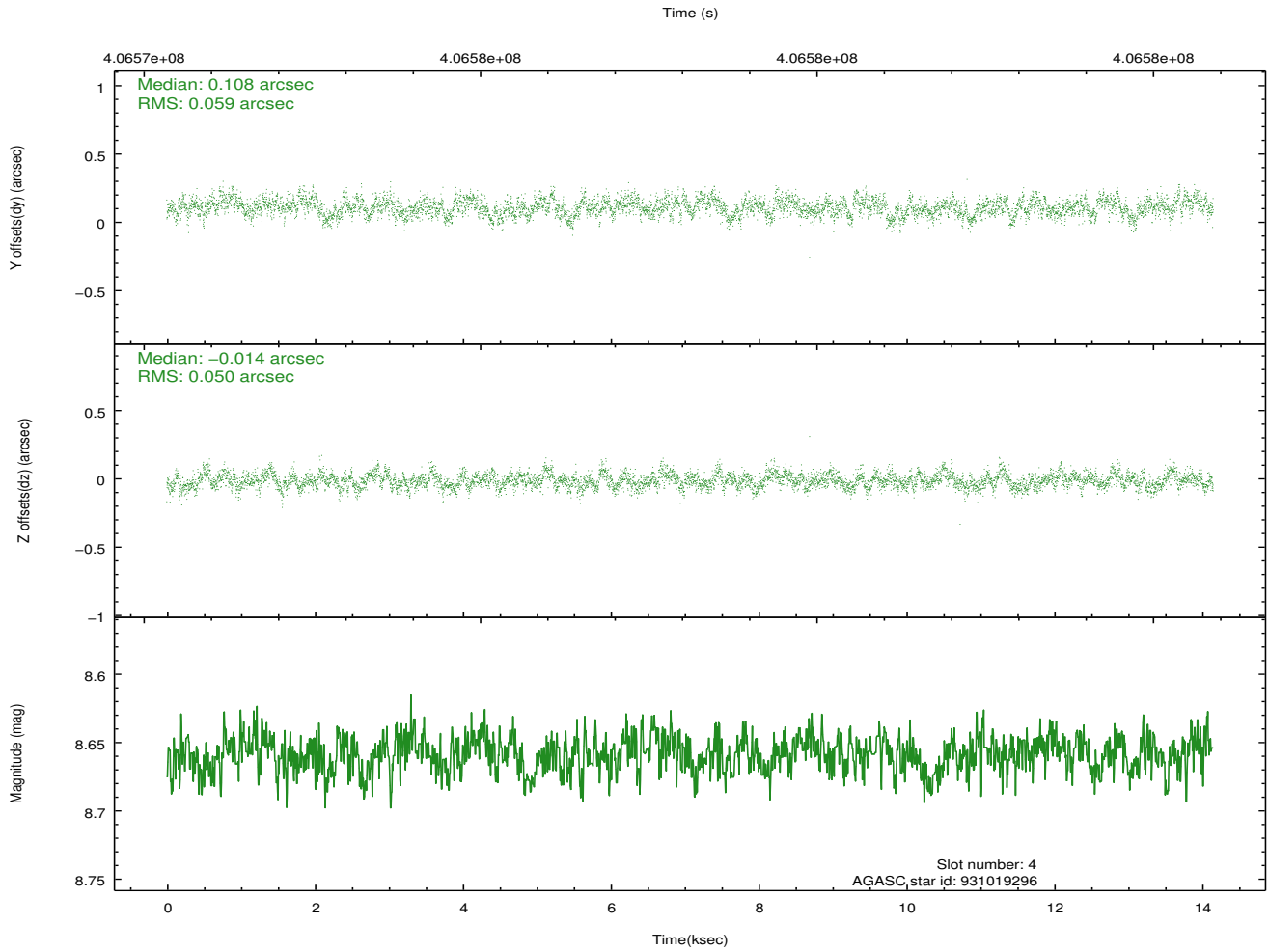
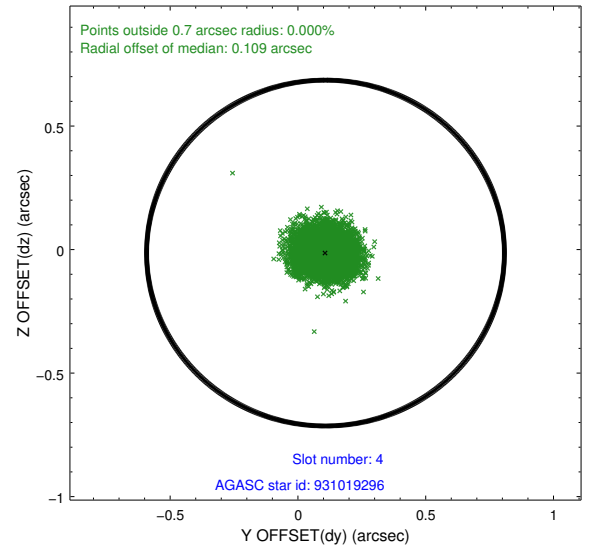
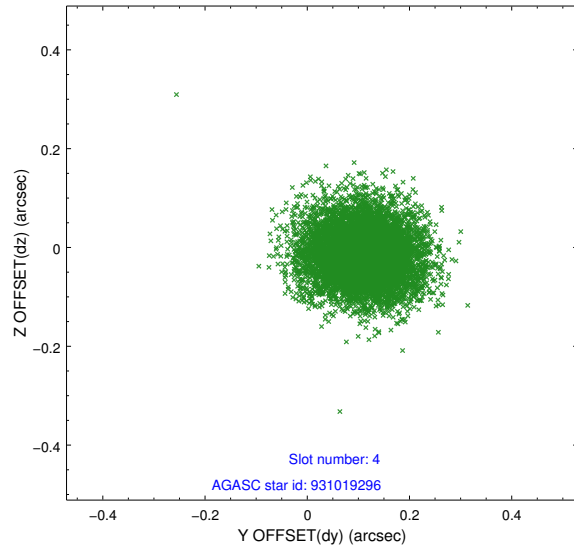
slot	status	id	mag	n_pts	med_dy	med_dz	dr1	dr2	ra	dec	mean_y	mean_z
0	FID	HRC-S-1	7.00	3453	0.038	-0.154	0.030	0.040	0.000000	0.000000	-1171.14	-462.23
1	FID	HRC-S-2	6.98	3453	0.282	-0.126	0.005	0.010	0.000000	0.000000	1228.45	-454.95
2	FID	HRC-S-3	7.01	3453	0.070	-0.023	0.030	0.042	0.000000	0.000000	-1173.48	567.30
3	GUIDE	931018016	8.48	6903	0.029	-0.068	0.082	0.136	109.684535	-31.226562	-87.12	1532.97
4	GUIDE	931019296	8.66	6896	0.108	-0.014	0.083	0.133	109.471771	-31.694370	-1835.16	1075.56
5	GUIDE	931160352	8.63	6901	-0.171	-0.084	0.068	0.113	110.268138	-30.864891	2019.99	830.33
6	GUIDE	931163512	8.46	6903	-0.022	0.156	0.095	0.156	110.894384	-31.299941	1860.57	-1650.82
7	GUIDE	931012368	8.75	6900	0.064	0.010	0.080	0.132	109.359817	-31.783345	-2294.77	1164.56

2.4 Star Slots

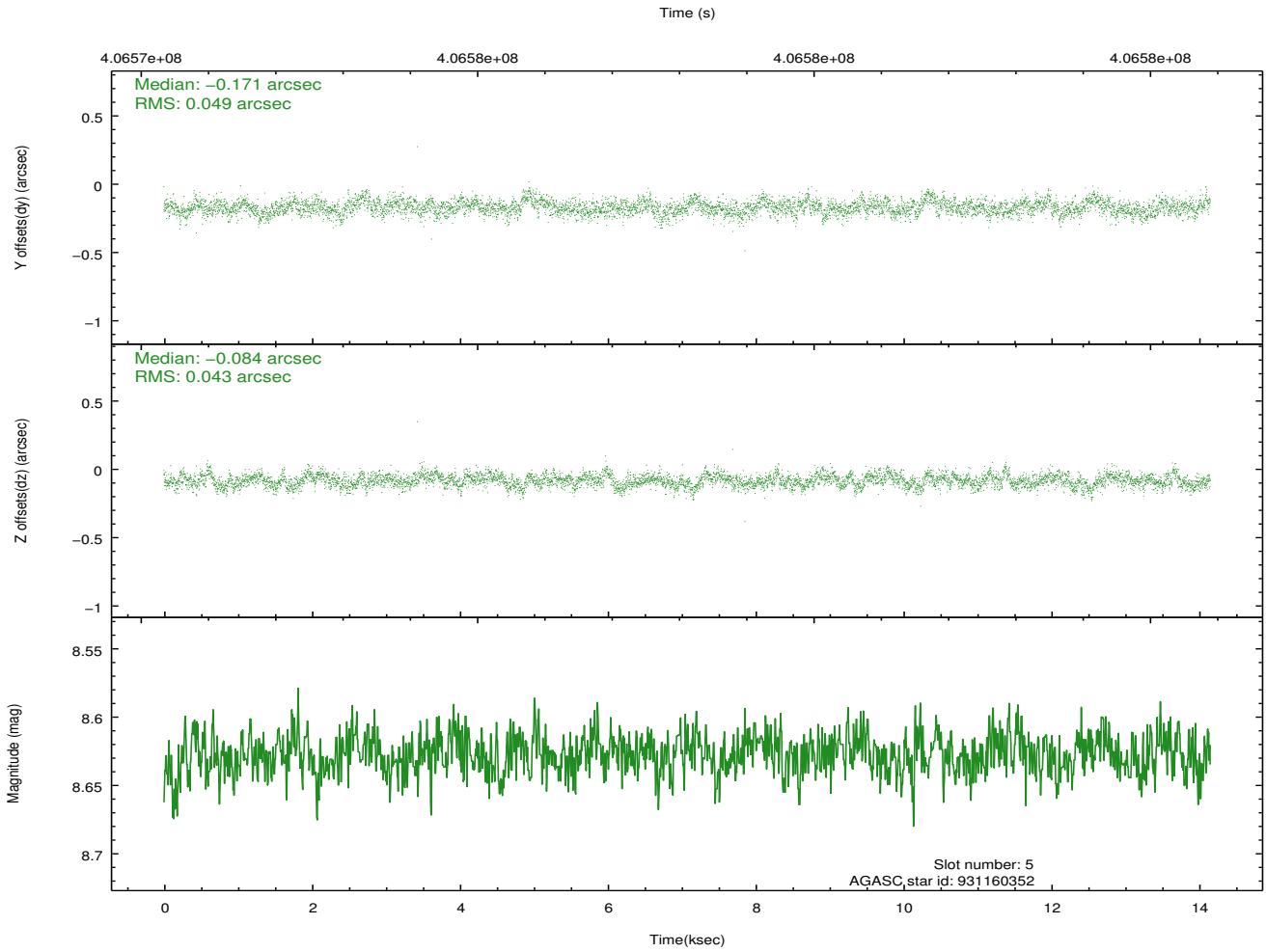
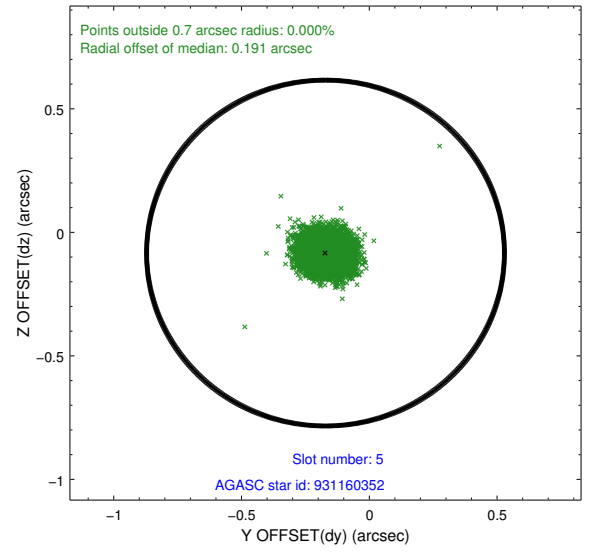
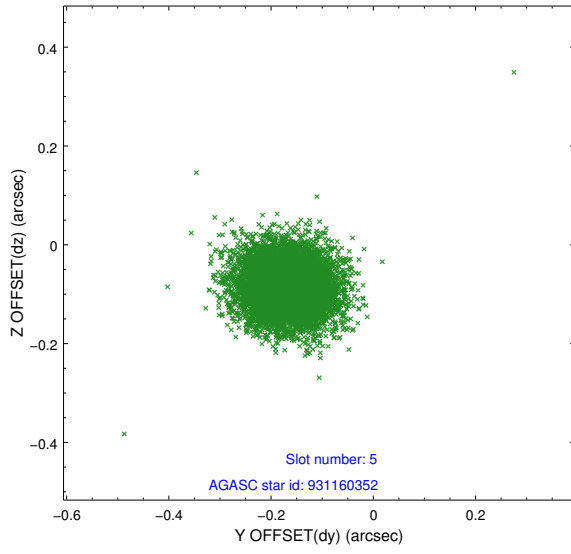
2.4.1 Slot 3



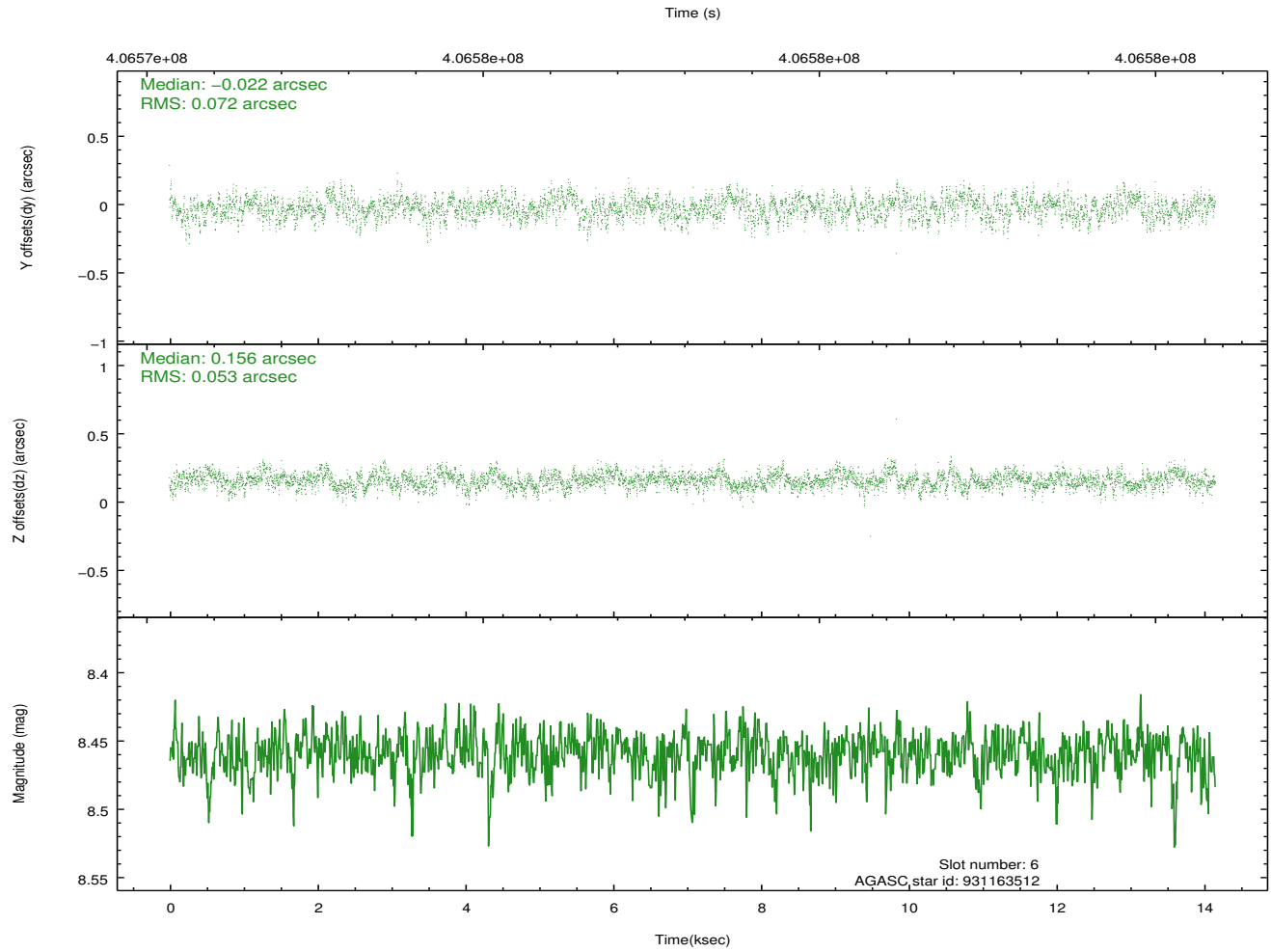
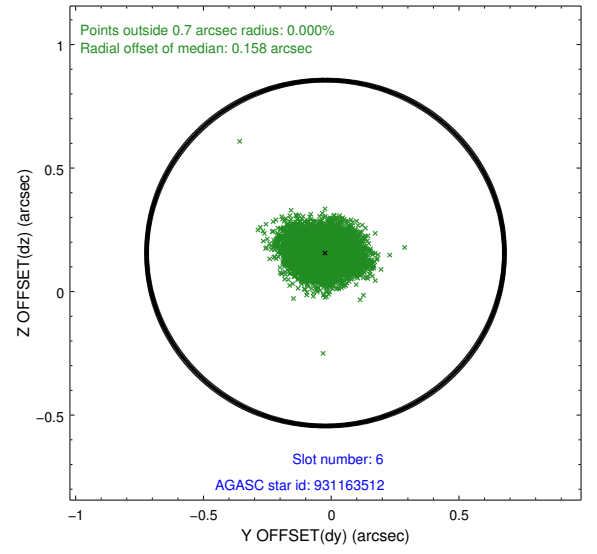
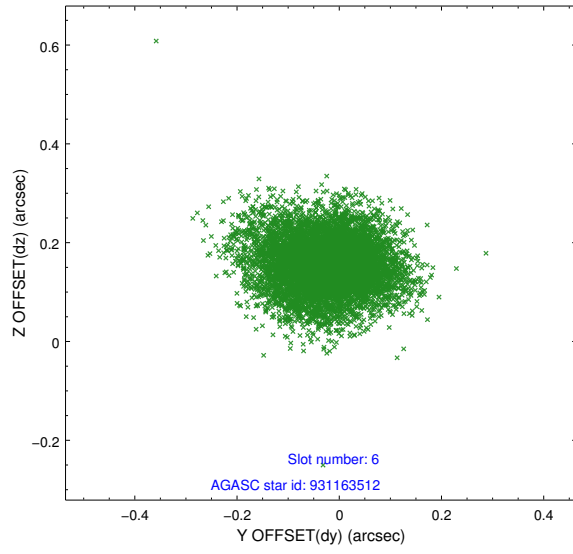
2.4.2 Slot 4



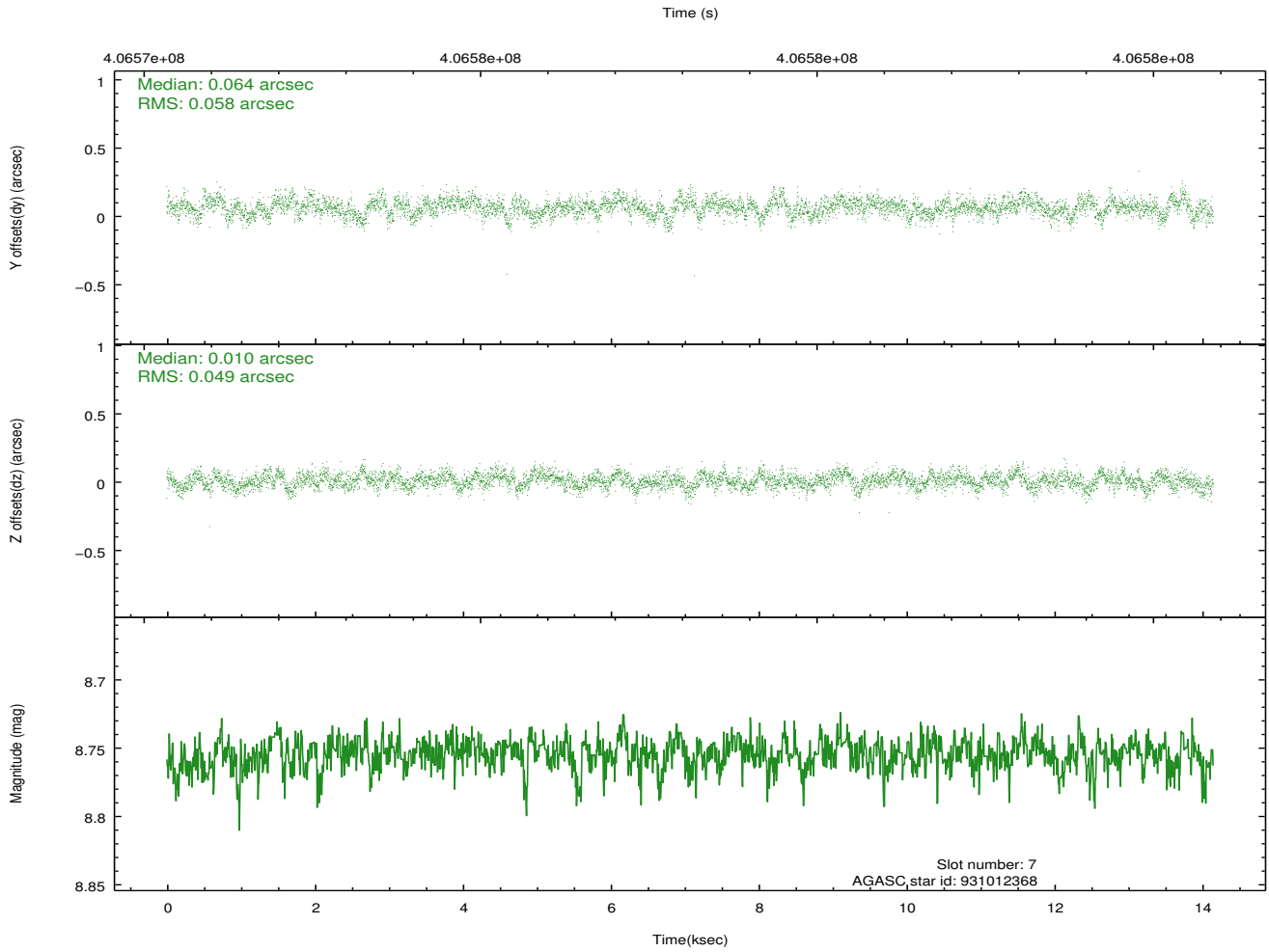
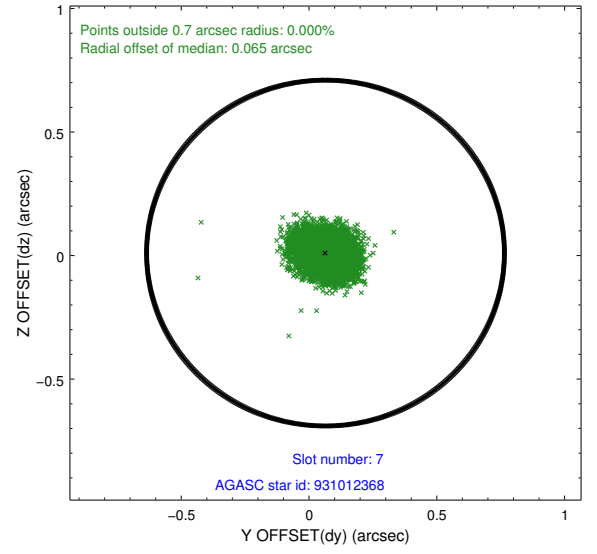
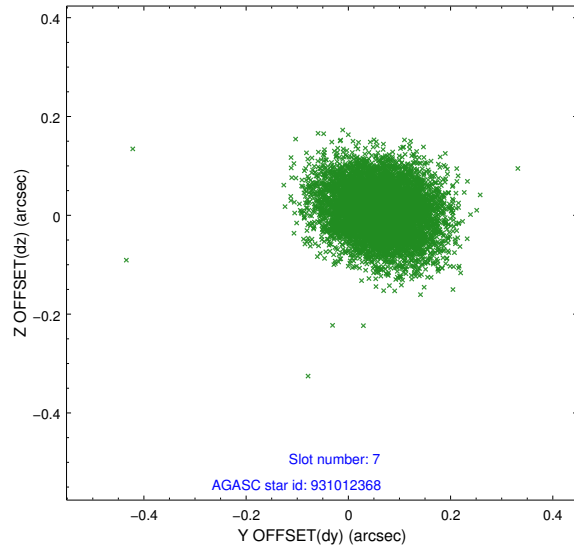
2.4.3 Slot 5



2.4.4 Slot 6

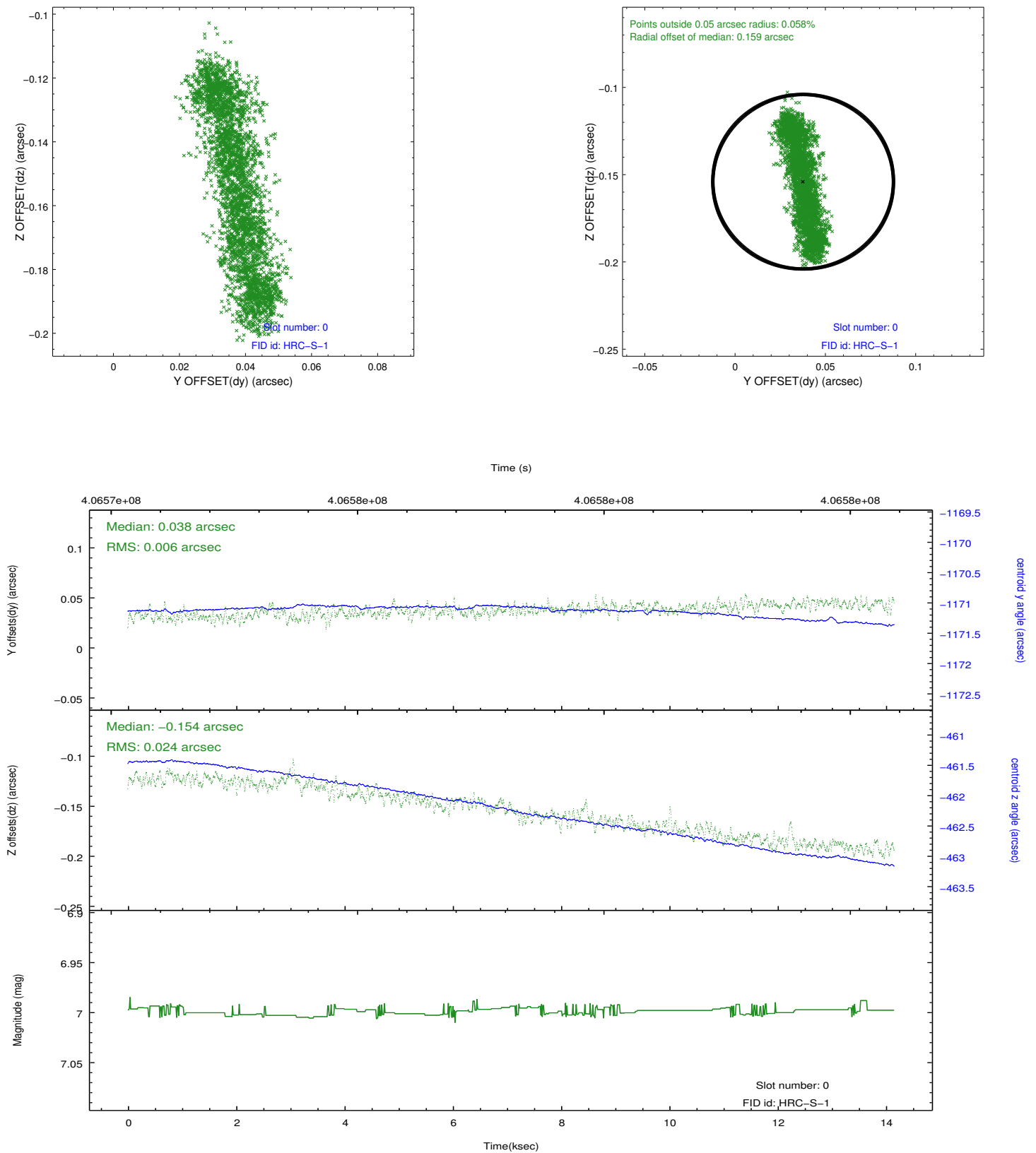


2.4.5 Slot 7

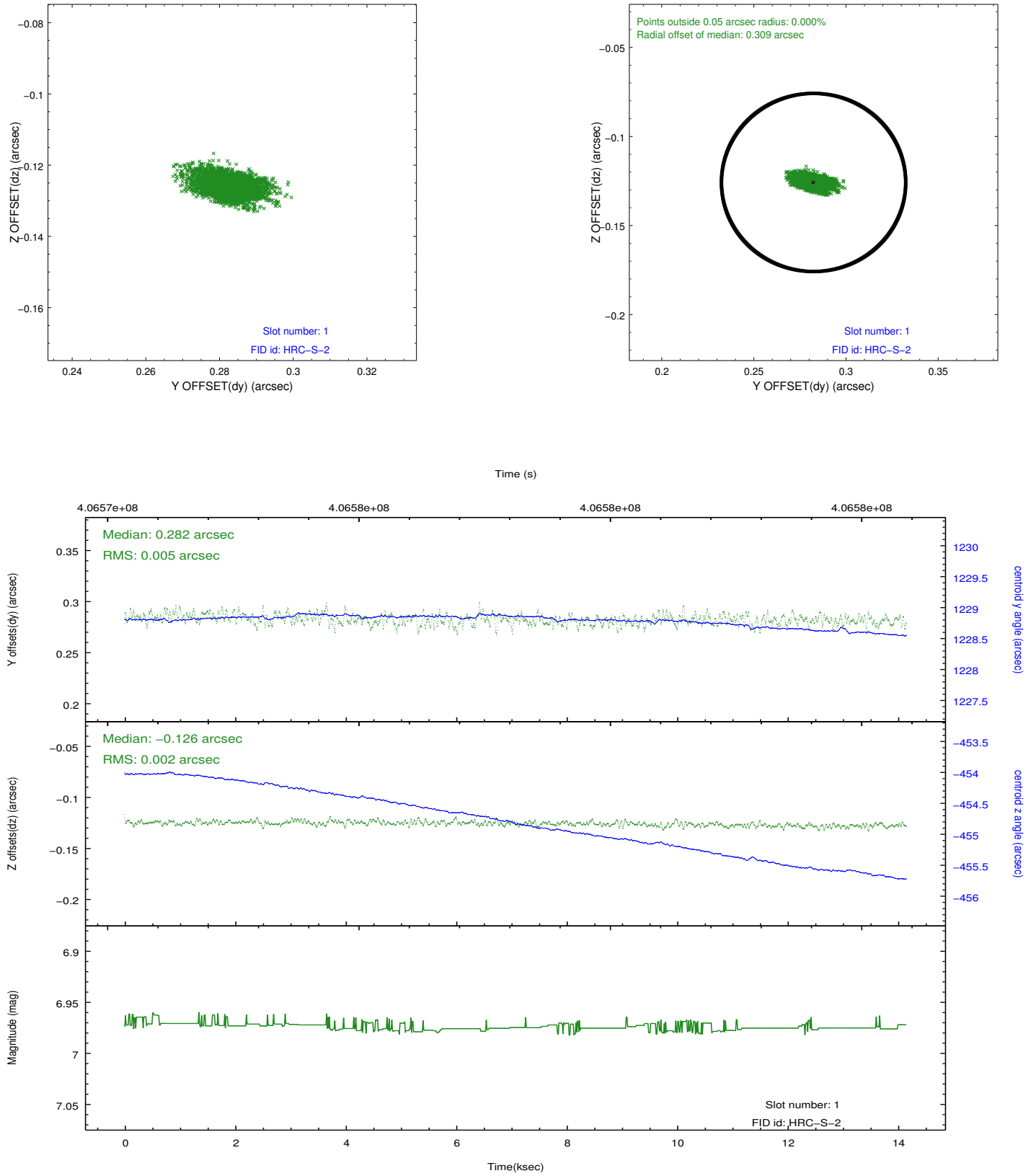


2.5 FID Slots

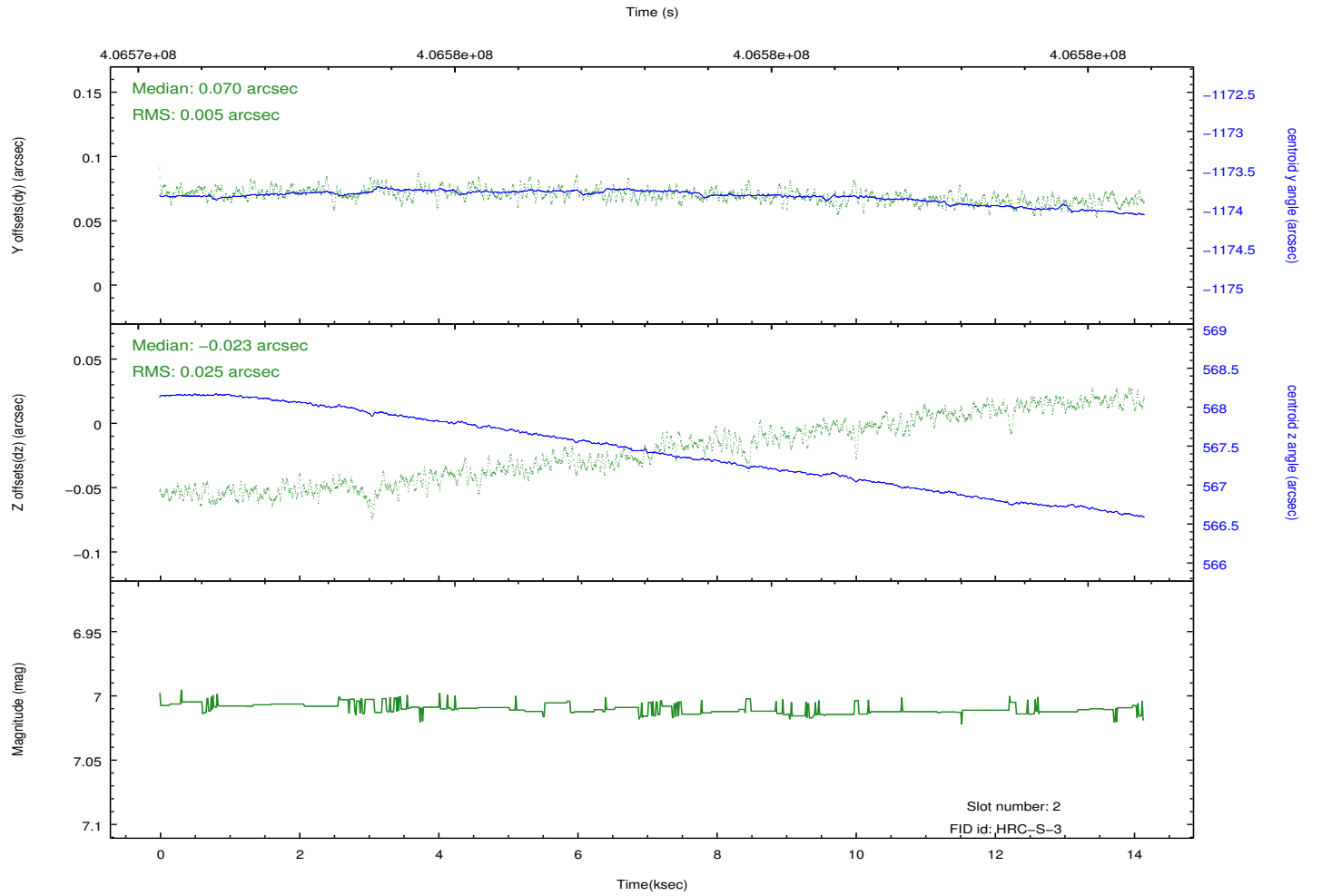
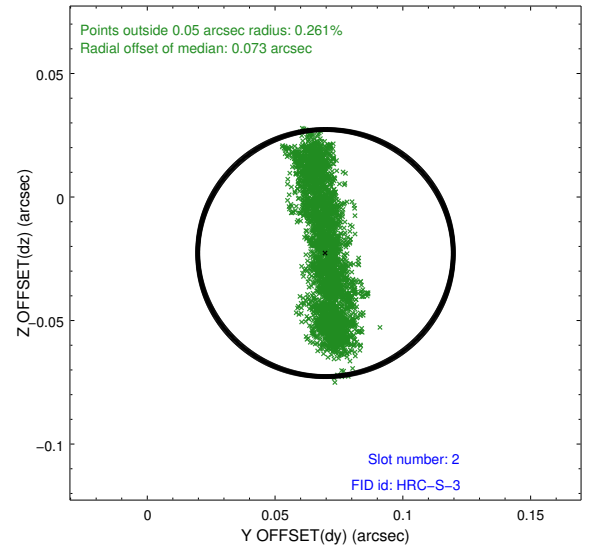
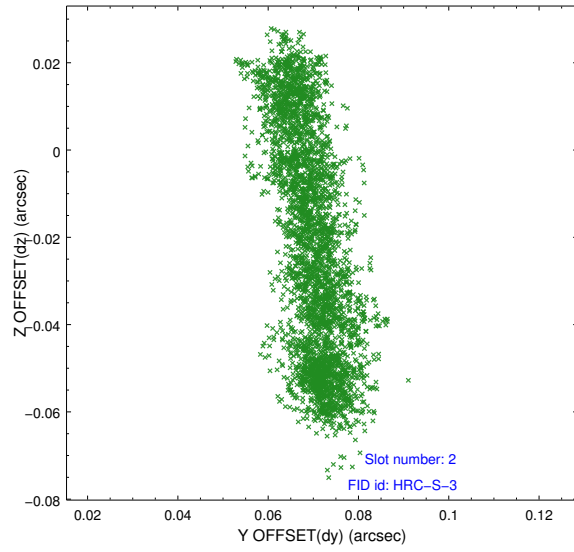
2.5.1 Slot 0



2.5.2 Slot 1

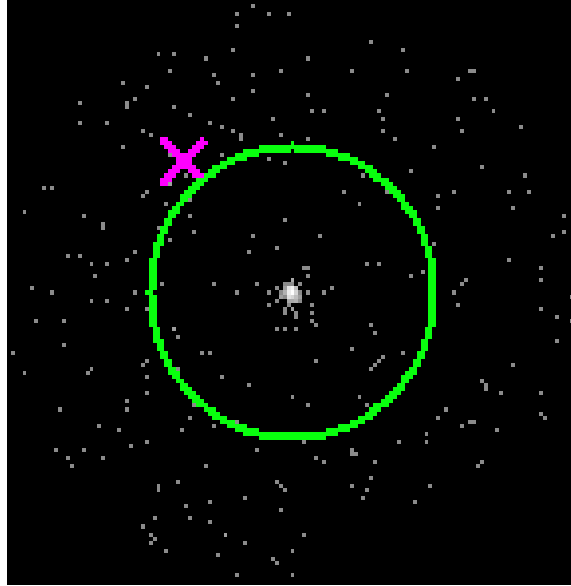


2.5.3 Slot 2

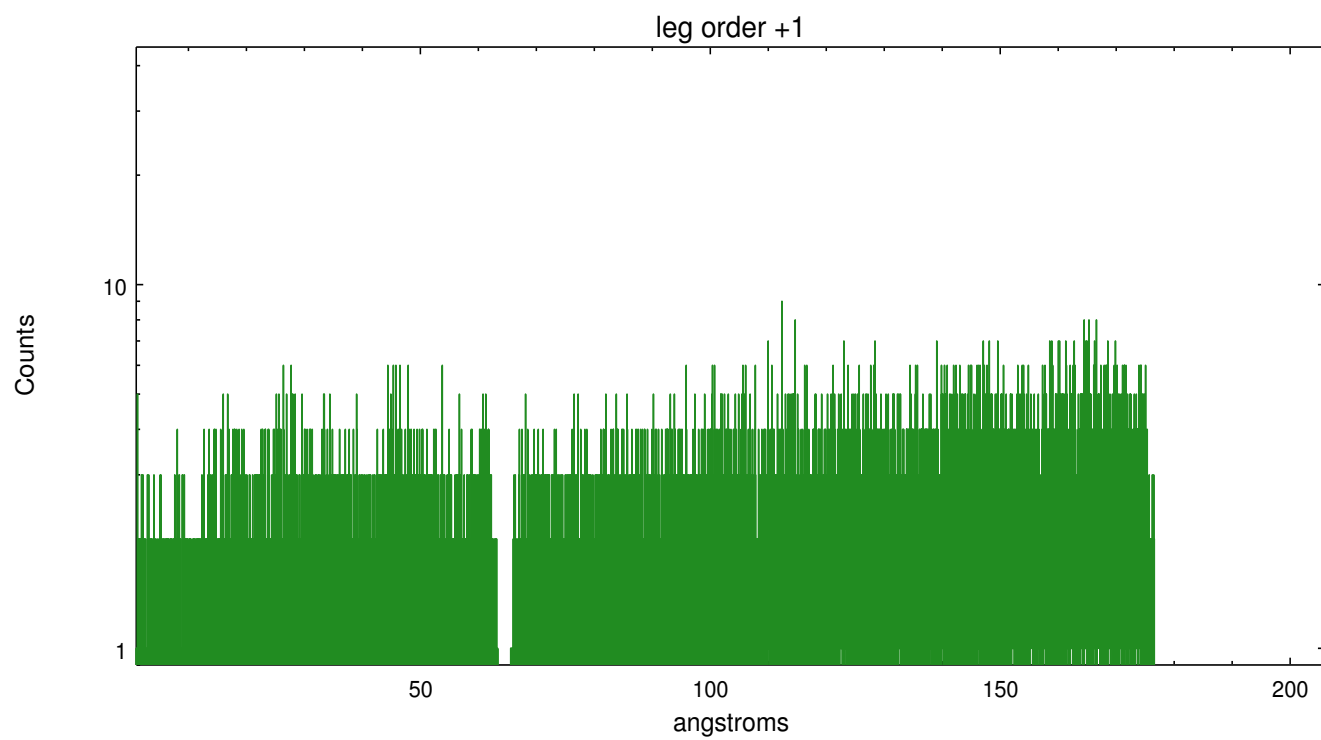
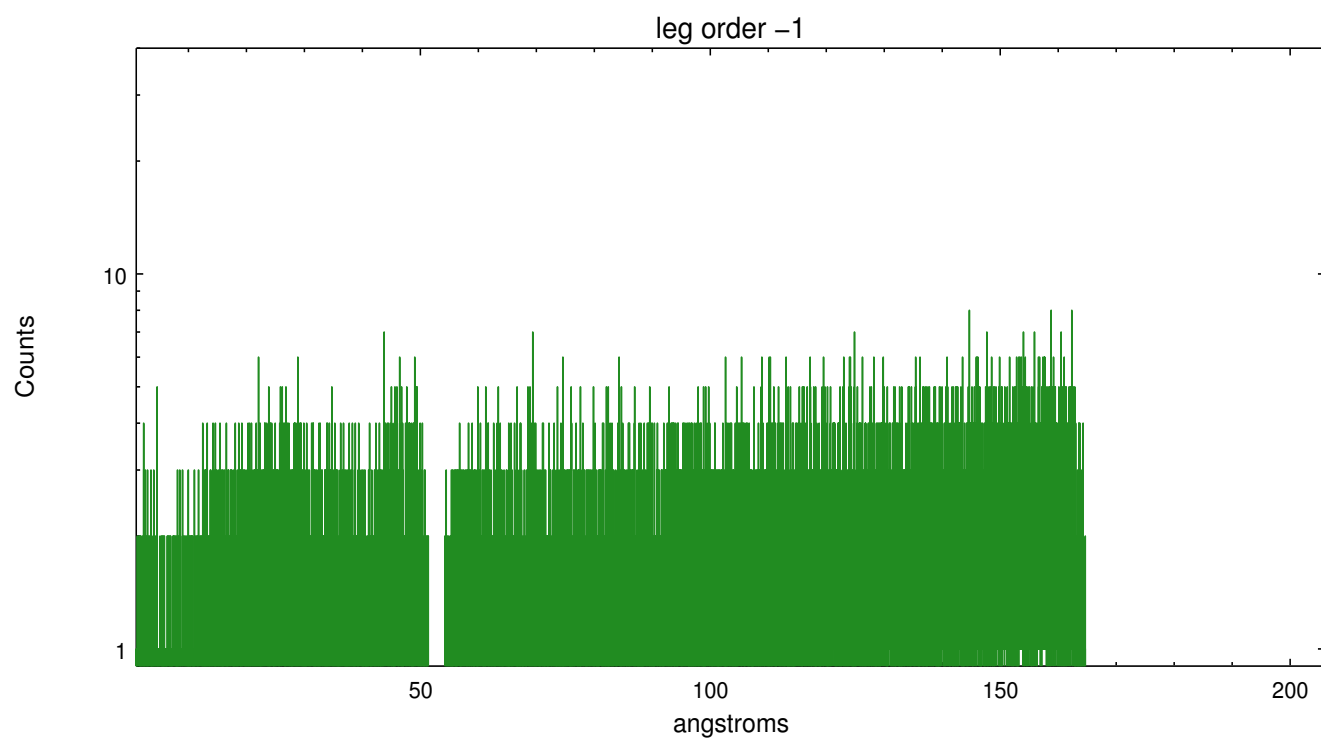


3 Gratings

3.1 LETG Arm



LETG Zero Order



A Summary

A.1 Status

V&V Scientist	Joy Nichols
V&V Date (YYYY-MM-DD)	2012.07.19
V&V Edition	1
V&V Disposition and Status	OK
V&V Charge Time	14.152431979597

A.2 Comments