

V&V Reference Report

L2 ASCDS Version : 8.4.3

Observation 13154 - L2 Version 2
Chandra X-Ray Center

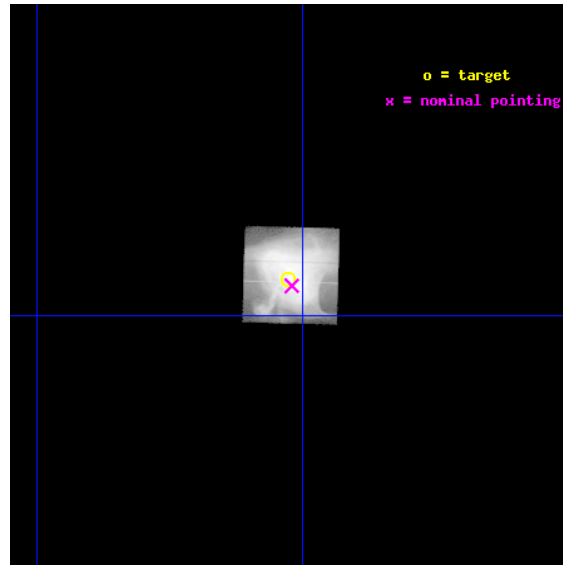
L2 Processing Date : Feb 8 2012

Contents

1	Front	2
2	OBI	3
2.1	OBI	3
2.1.1	Images	3
2.1.2	Parameters	4
2.1.3	Events	4
2.2	Compared Parameters	5
2.3	Aspect	6
2.4	Star Slots	9
2.4.1	Slot 3	9
2.4.2	Slot 4	10
2.4.3	Slot 5	11
2.4.4	Slot 6	12
2.4.5	Slot 7	13
2.5	FID Slots	14
2.5.1	Slot 0	14
2.5.2	Slot 1	15
2.5.3	Slot 2	16
A	Summary	17
A.1	Status	17
A.2	Comments	17

1 Front

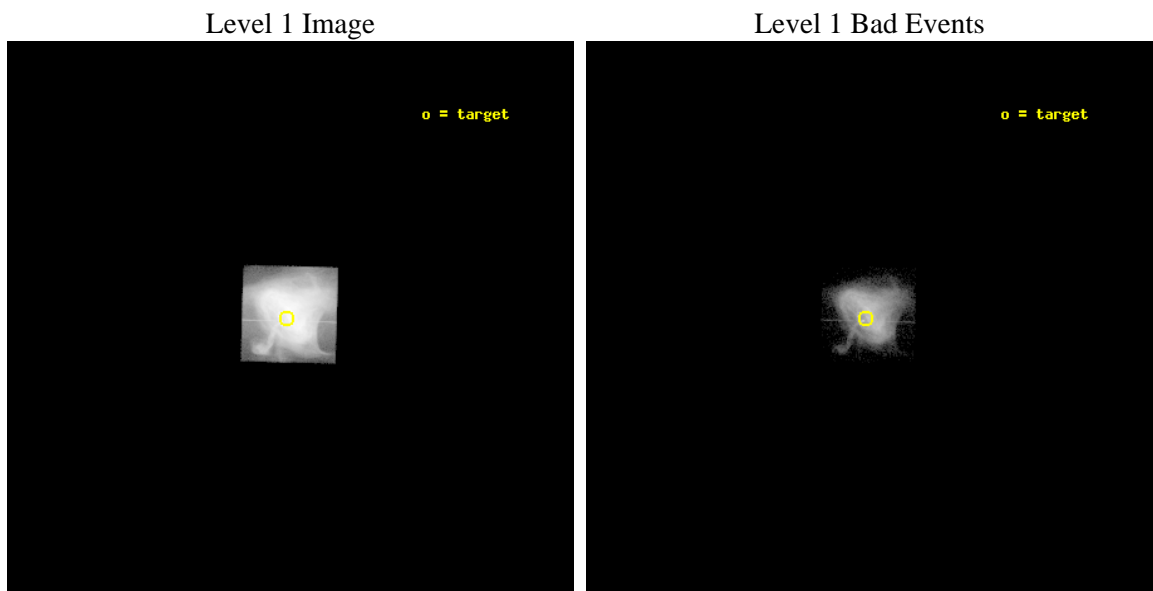
seq_num	501540	Sequence number
obs_id	13154	Observation id
title	Study of spatial structure associated with a gamma-ray enhancement of the Crab	Proposal title
observer	Dr. Martin Weisskopf	Principal investigator
object	Crab Nebula	Source name
dtcycle	0	
cycle	P	events from which exps? Prim/Second/Both
ra_targ	83.631667	Observer's specified target RA [deg]
dec_targ	22.015667	Observer's specified target Dec [deg]
ra_nom	83.630013106186	Nominal RA [deg]
dec_nom	22.012847977579	Nominal Dec [deg]
roll_nom	271.52926432704	Nominal Roll [deg]
revision	2	Processing version of data
ontime	6914.5259734392	Sum of GTIs [s]
livetime	1207.0184640993	Livetime [s]
ontime7	6914.5259734392	Sum of GTIs [s]
l2events	3500143	Number of level 2 events



2 OBI

2.1 OBI

2.1.1 Images



2.1.2 Parameters

obi_num	0	Obi number	sched_exp_time	10000.000000	[s] Scheduled observation exposure time
ascdsver	8.4.3	Processing system revision	ontime	6914.5259734392	Sum of GTIs [s]
caldbver	4.4.7	 	ontime7	6914.5259734392	Sum of GTIs [s]
date	2012-02-09T00:03:30	Date and time of file creation	l1events	3891957	Number of level 1 events
revision	2	Processing version of data			

2.1.3 Events

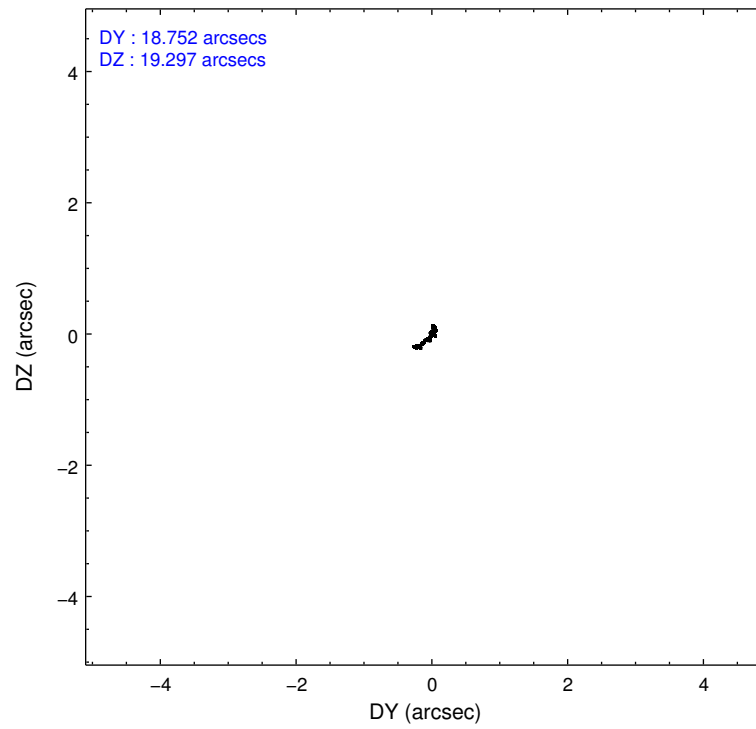
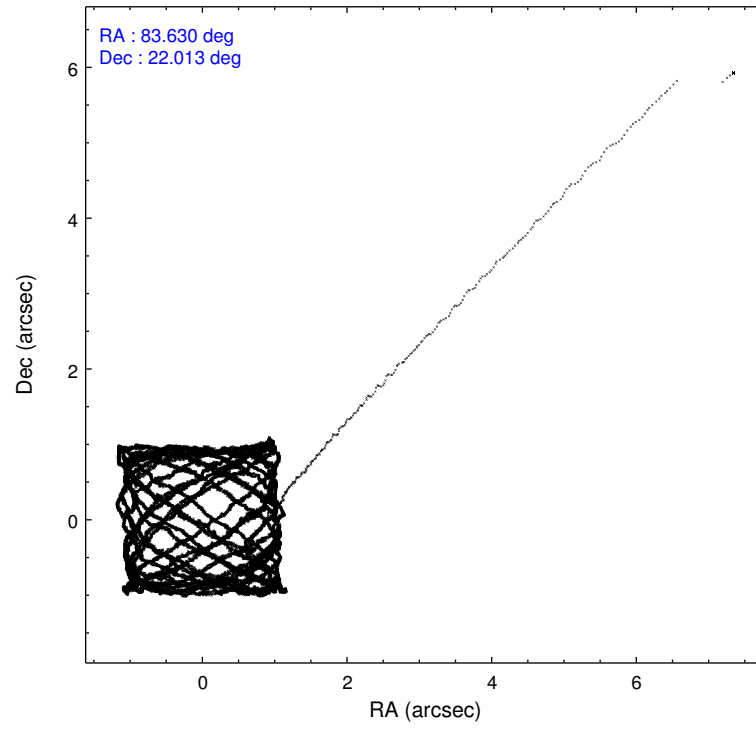
	ccd 7
level 1 events	3891957
rejected events	342683
rejected %	8%

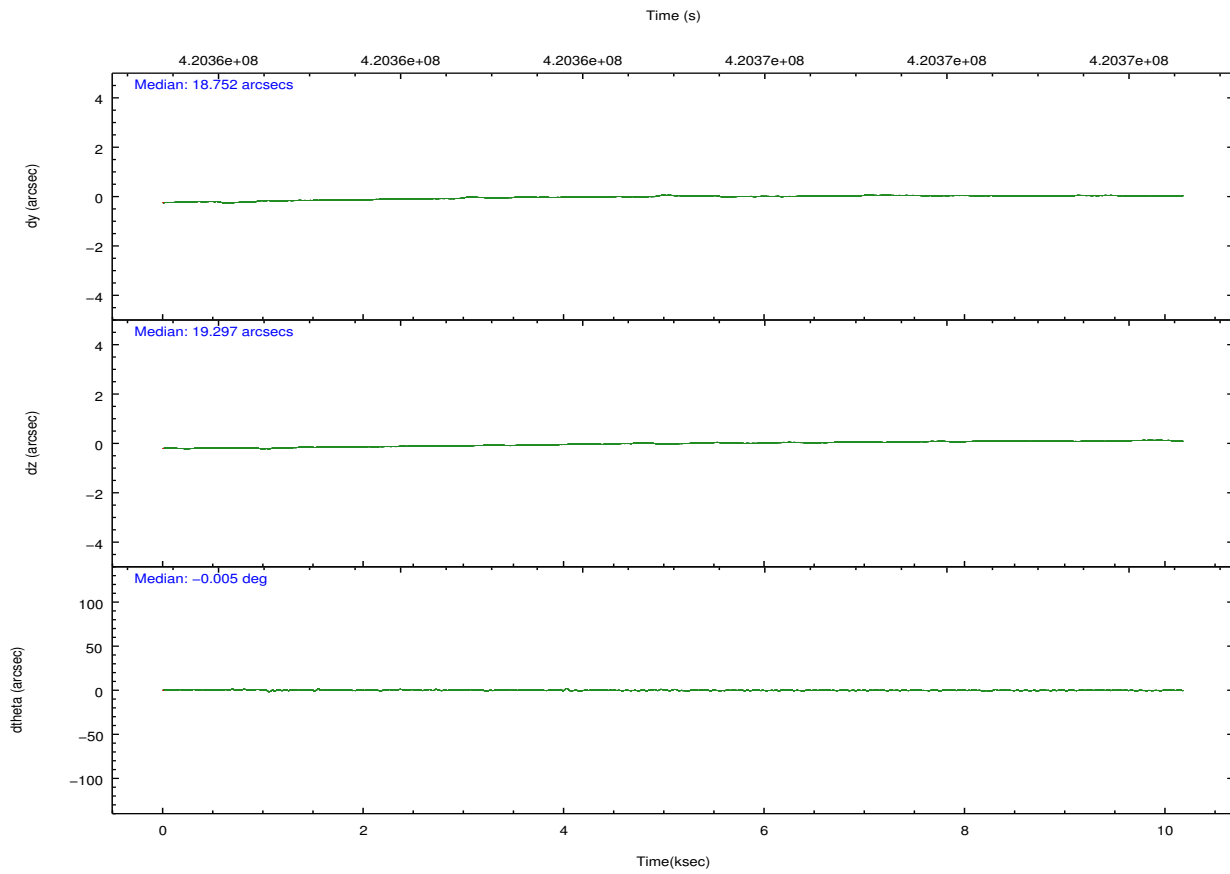
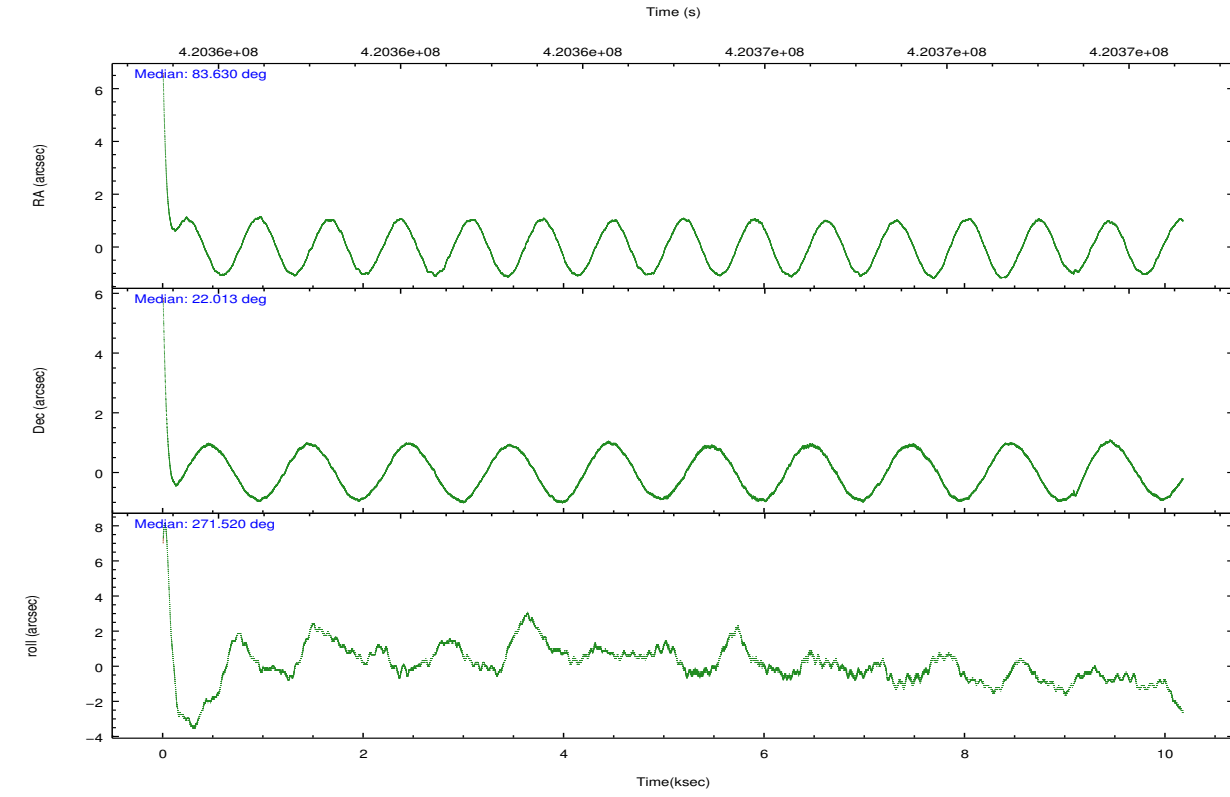
	ccd 7
grade 0 events	779508
	20%
grade 1 events	43671
	1%
grade 2 events	954488
	24%
grade 3 events	403155
	10%
grade 4 events	397966
	10%
grade 5 events	125912
	3%
grade 6 events	1014730
	26%
grade 7 events	172527
	4%

2.2 Compared Parameters

Parameter	Planned	Actual	Parameter	Planned	Actual
Instrument	ACIS	ACIS	Obspar format version number	7	7
Detector	ACIS-7	ACIS-7	Obspar file type	PREDICTED	ACTUAL
Grating	NONE	NONE	Obspar update status	NONE	UPDATED
Data mode	GRADED	GRADED	Number of optional ACIS chips dropped	0	0
Observation mode	POINTING	POINTING	On-chip summing requested	N	N
[deg] Pointing RA	83.614234	83.63001310618584	Subarray requested	CUSTOM	CUSTOM
[deg] Pointing Dec	22.035952	22.01284797757902	Subarray start row	85	85
[deg] Pointing Roll	271.378545	271.5292643270445	Subarray row count	300	300
[mm] SIM focus pos	-0.684267	-0.6828225247311905	Alternating exposures requested	N	N
[mm] SIM defocus	0	0.001444936568705701	[s] Primary exposure time	0.000000	0.2
[mm] SIM translation stage pos	-184.076523	-184.0679945966045			
[mm] SIM translation stage offset	-6.056	-6.064527986403334			
[s] Observation start time (MET)	420360084.184000	420359109.78472			
Observation start date	2011-04-28T06:40:18	2011-04-28T06:25:09			
[s] Observation end time (MET)	420370084.184000	420370686.64782			
Observation end date	2011-04-28T09:26:58	2011-04-28T09:38:06			
Read mode	TIMED	TIMED			

2.3 Aspect



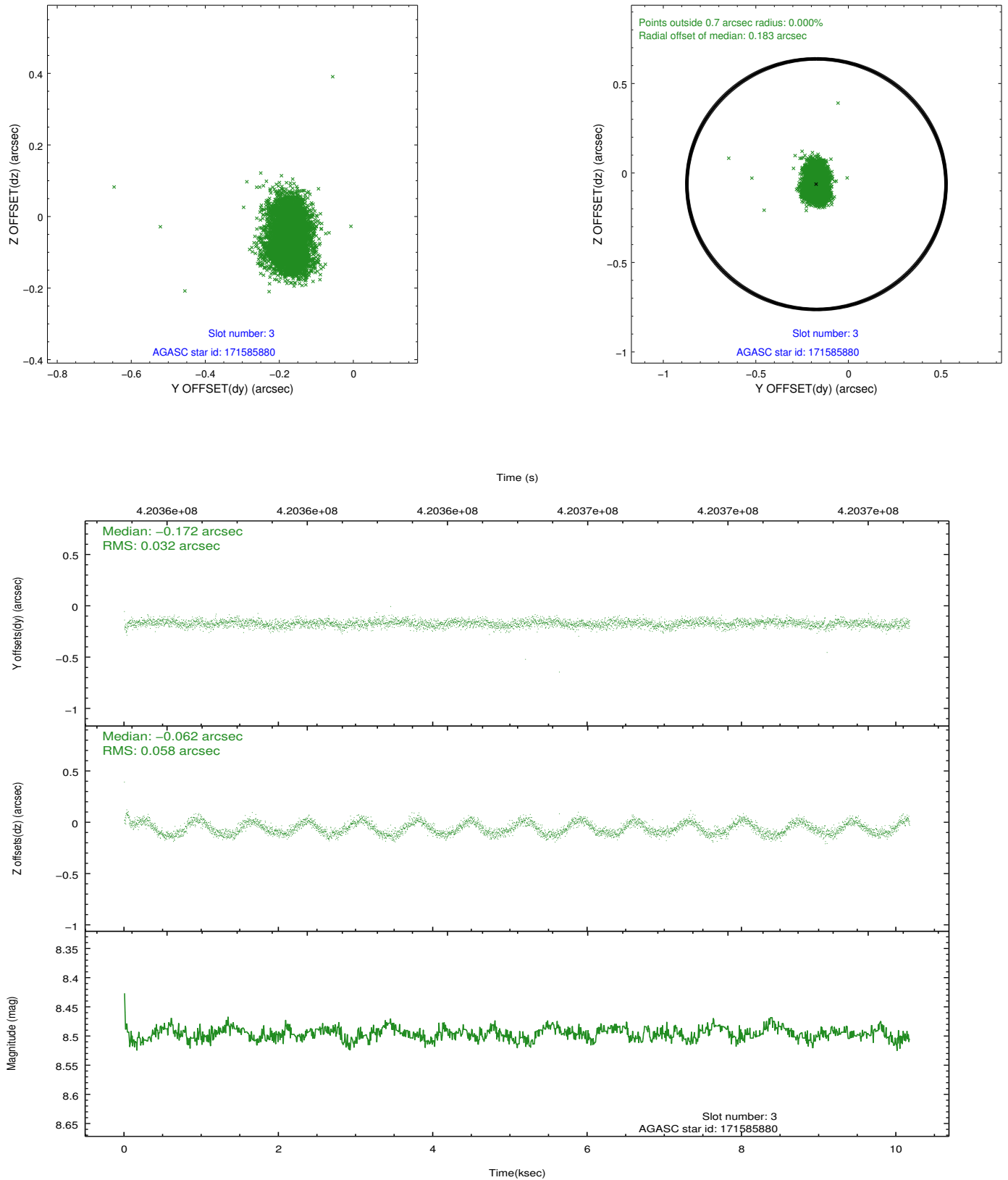


Slot Statistics

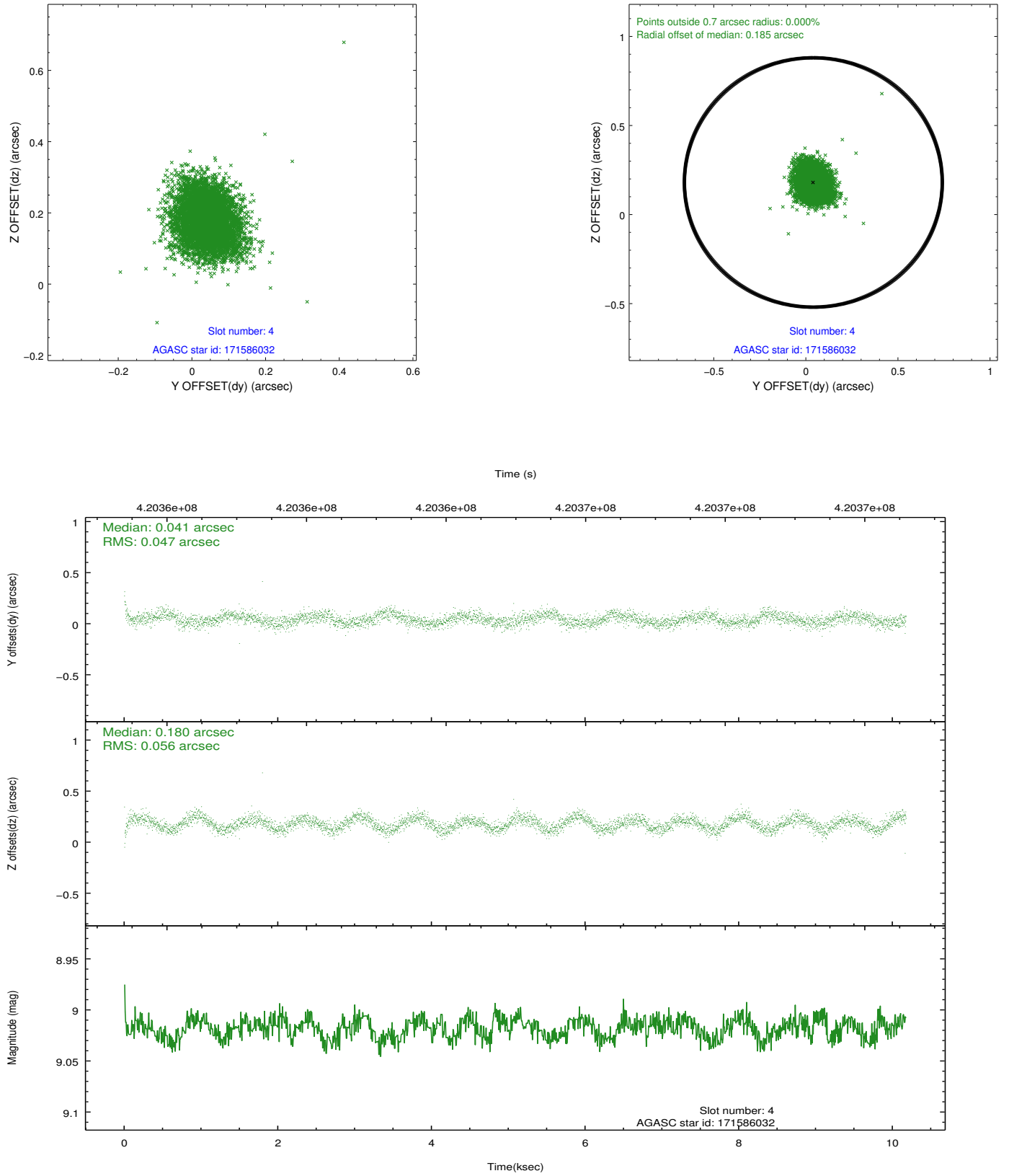
slot	status	id	mag	n_pts	med_dy	med_dz	dr1	dr2	ra	dec	mean_y	mean_z
0	FID	ACIS-S-2	6.90	2482	-0.087	-0.028	0.007	0.011	0.000000	0.000000	-771.42	-1865.81
1	FID	ACIS-S-4	6.97	2482	0.207	0.049	0.007	0.012	0.000000	0.000000	2141.89	42.18
2	FID	ACIS-S-5	7.01	2482	-0.151	-0.013	0.007	0.011	0.000000	0.000000	-1823.69	36.34
3	GUIDE	171585880	8.50	4963	-0.172	-0.062	0.070	0.108	83.676260	22.176319	-500.02	218.91
4	GUIDE	171586032	9.02	4960	0.041	0.180	0.078	0.124	83.950197	22.083225	-144.22	1124.91
5	GUIDE	171721904	9.19	4957	-0.092	0.045	0.092	0.142	84.272676	22.116922	-243.37	2202.86
6	GUIDE	243941560	8.32	4964	-0.136	0.088	0.057	0.089	83.733264	22.568598	-1907.24	441.98
7	GUIDE	171597832	9.23	4954	0.368	-0.257	0.105	0.171	83.183230	21.366702	2372.51	-1502.17

2.4 Star Slots

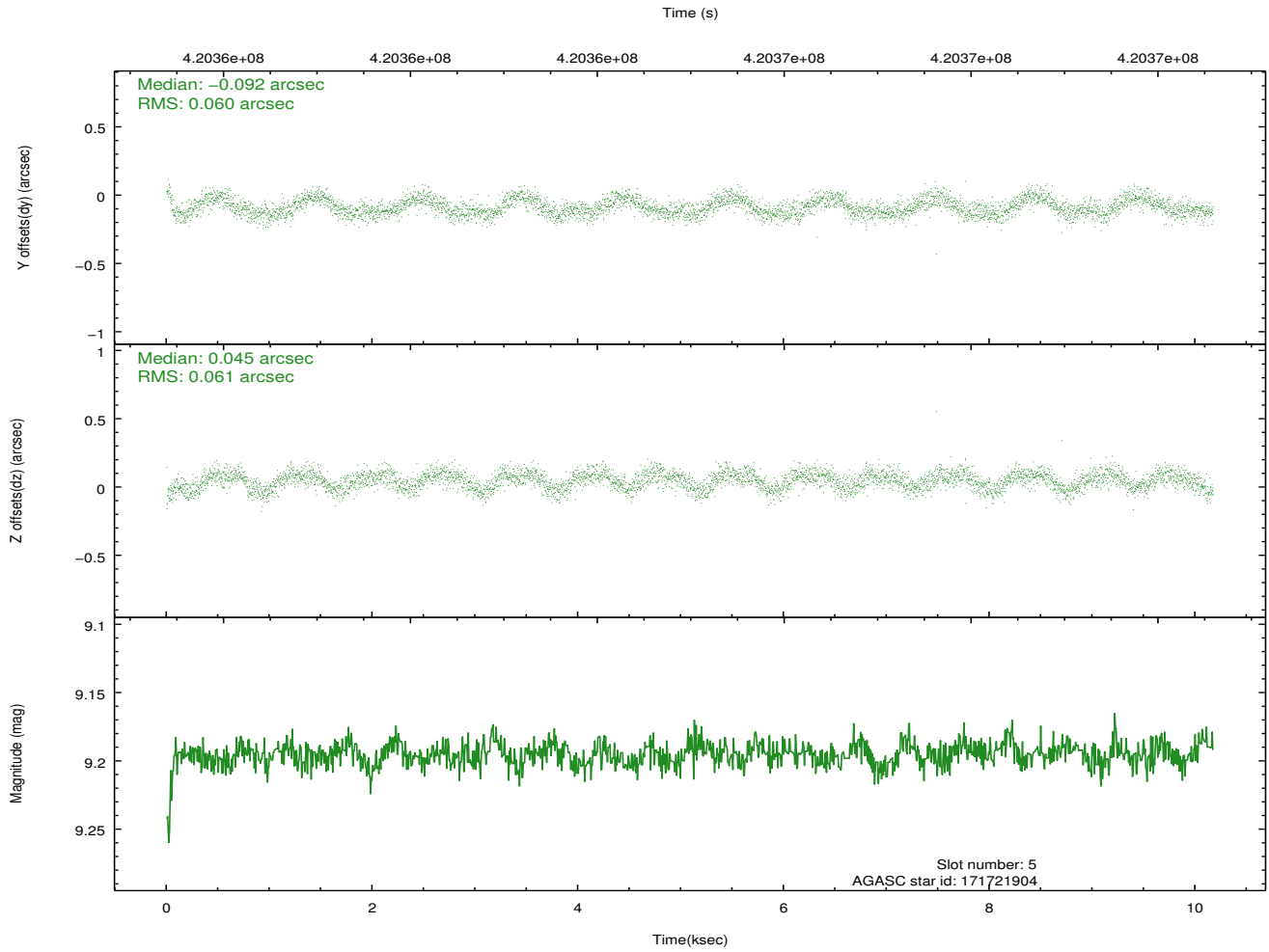
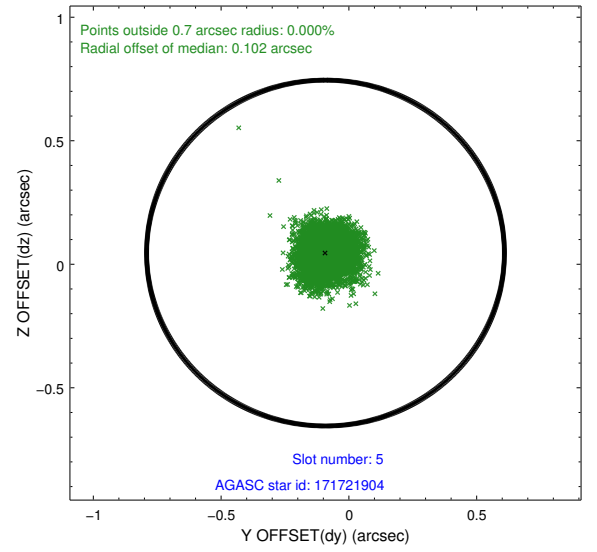
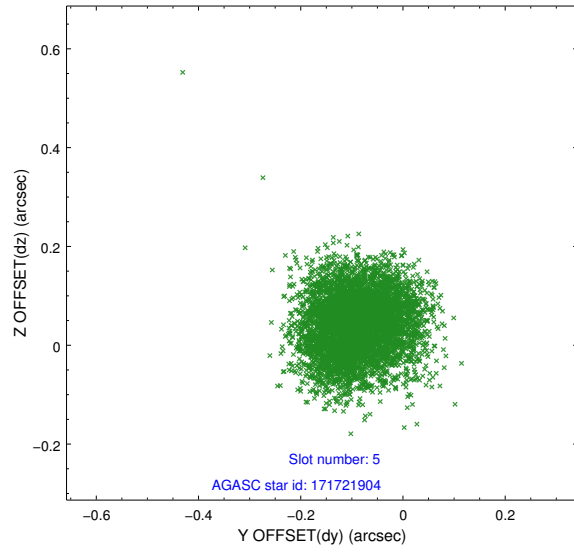
2.4.1 Slot 3



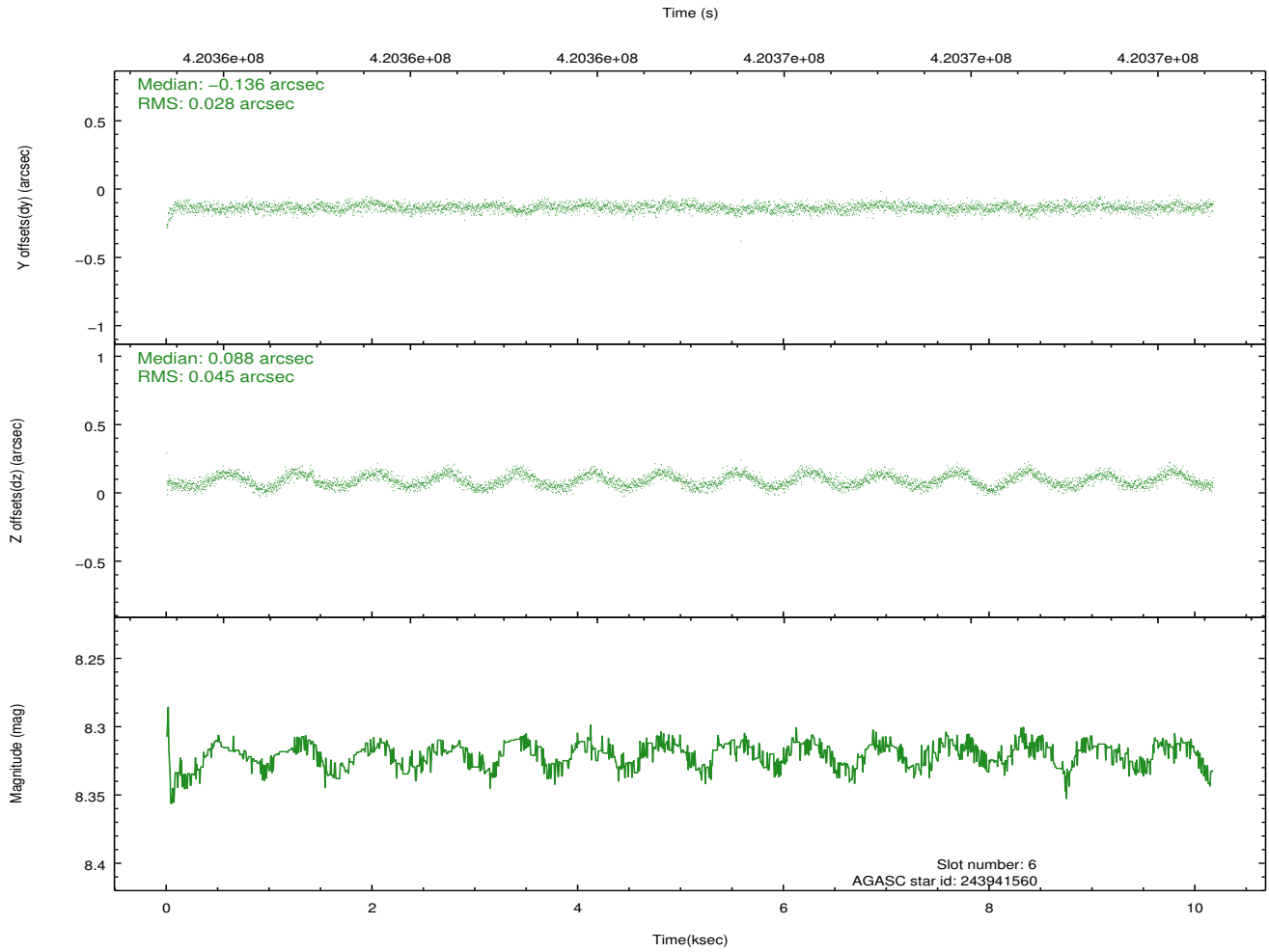
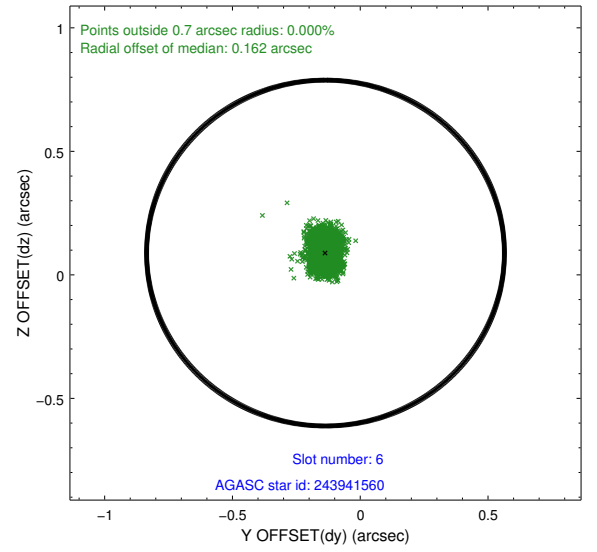
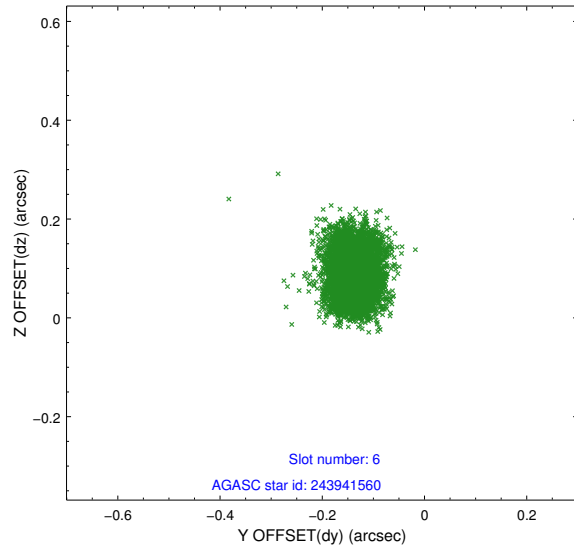
2.4.2 Slot 4



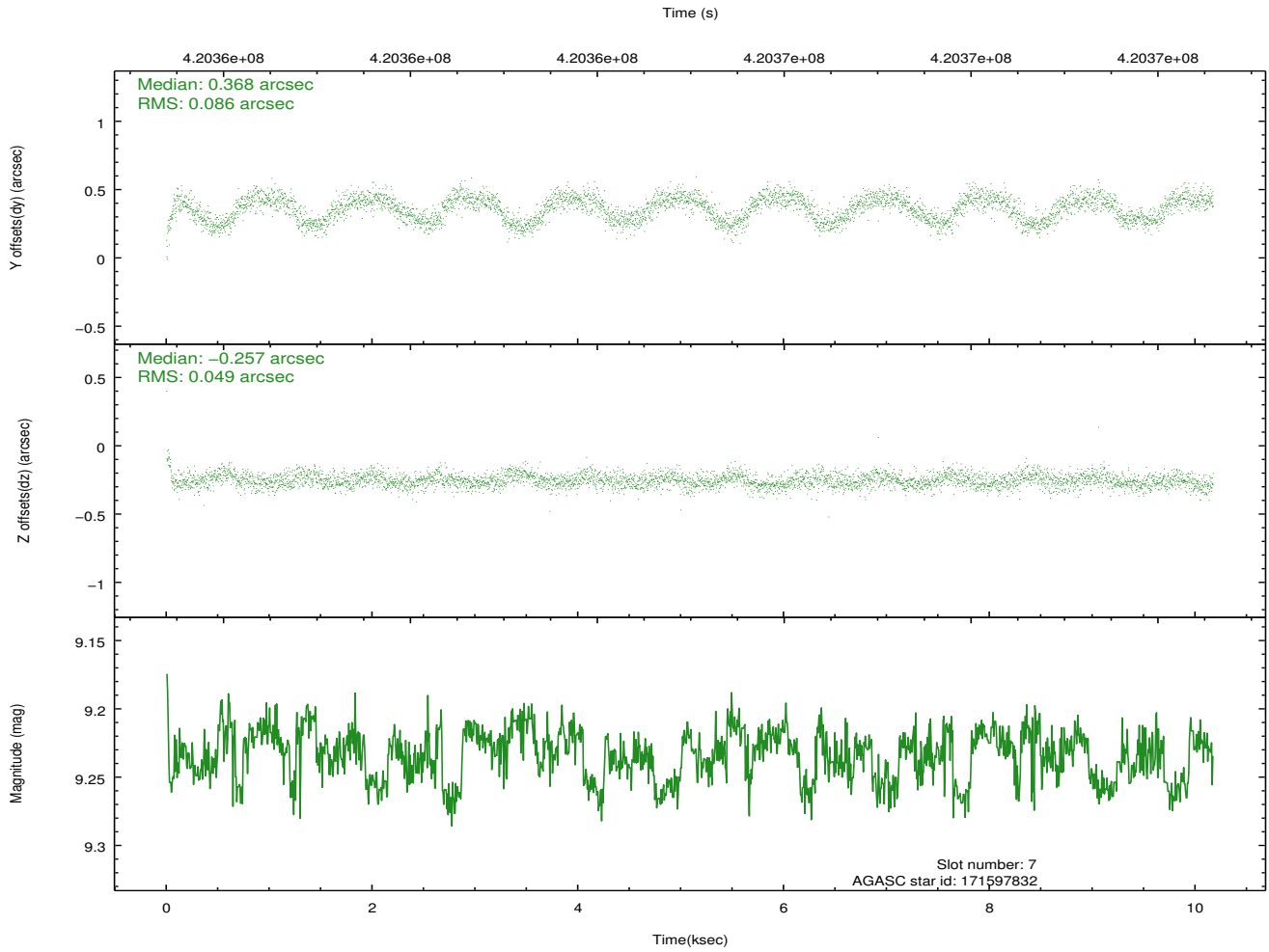
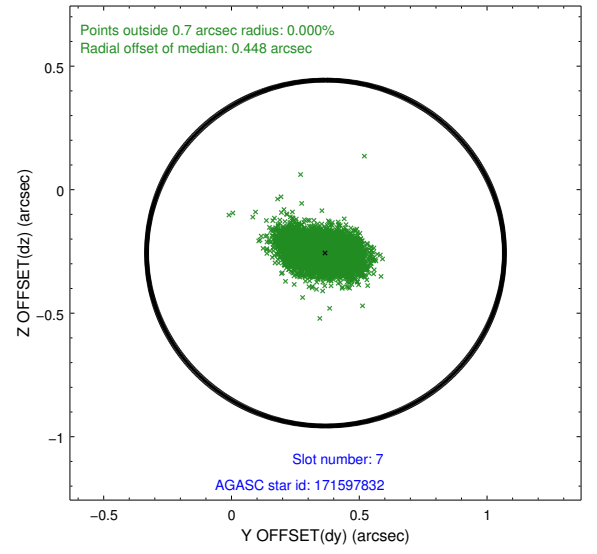
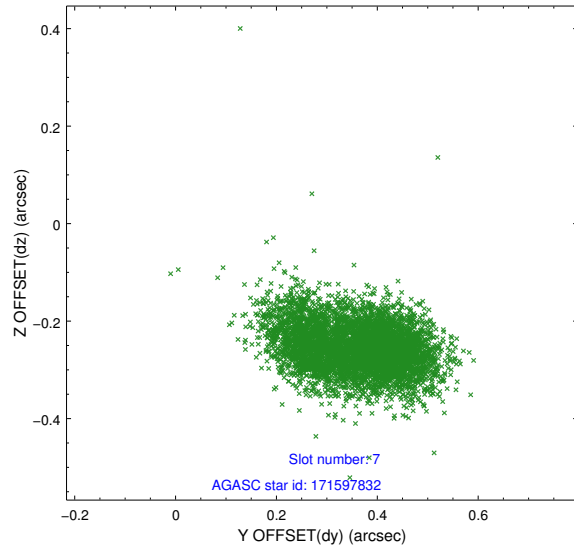
2.4.3 Slot 5



2.4.4 Slot 6

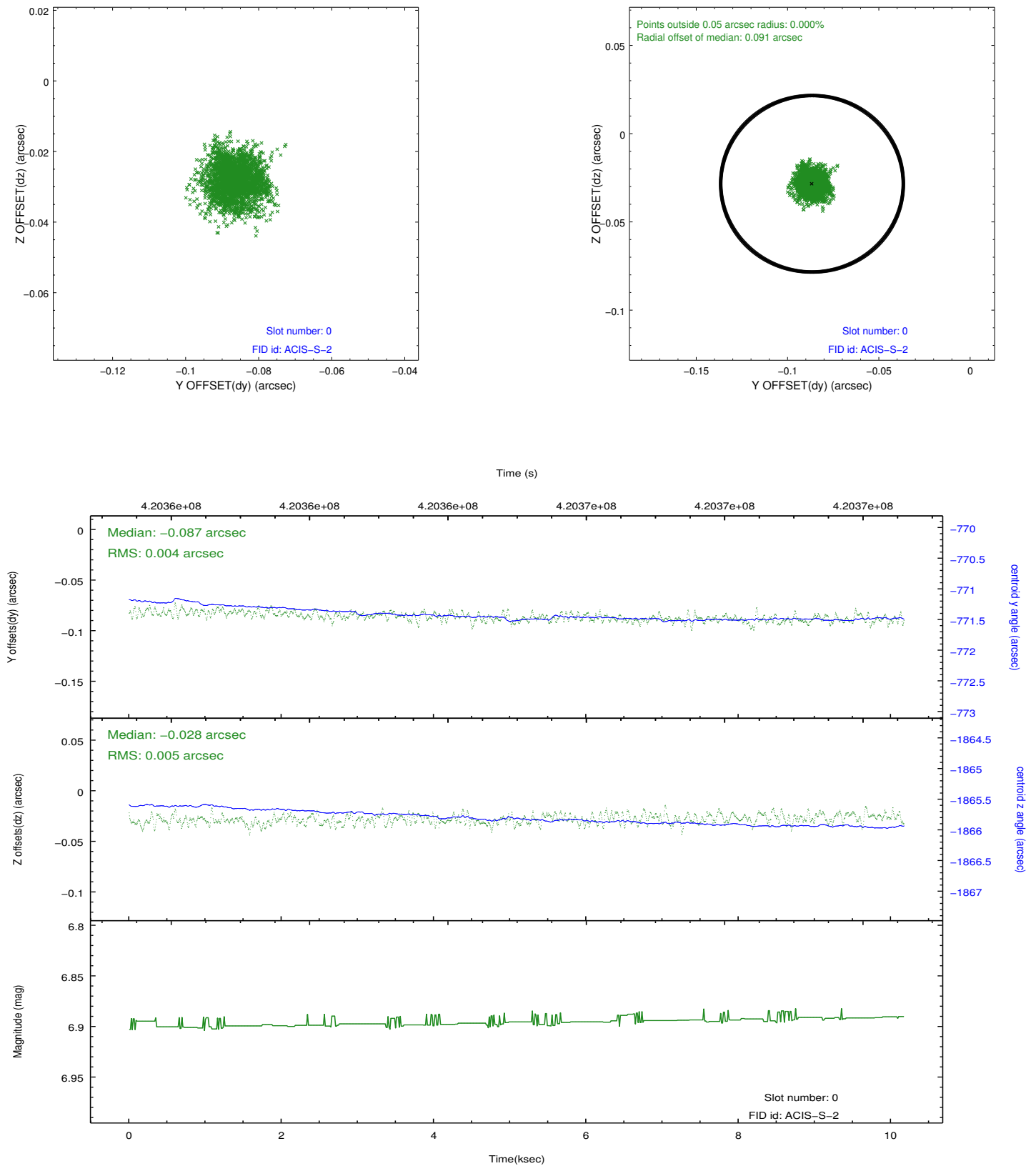


2.4.5 Slot 7

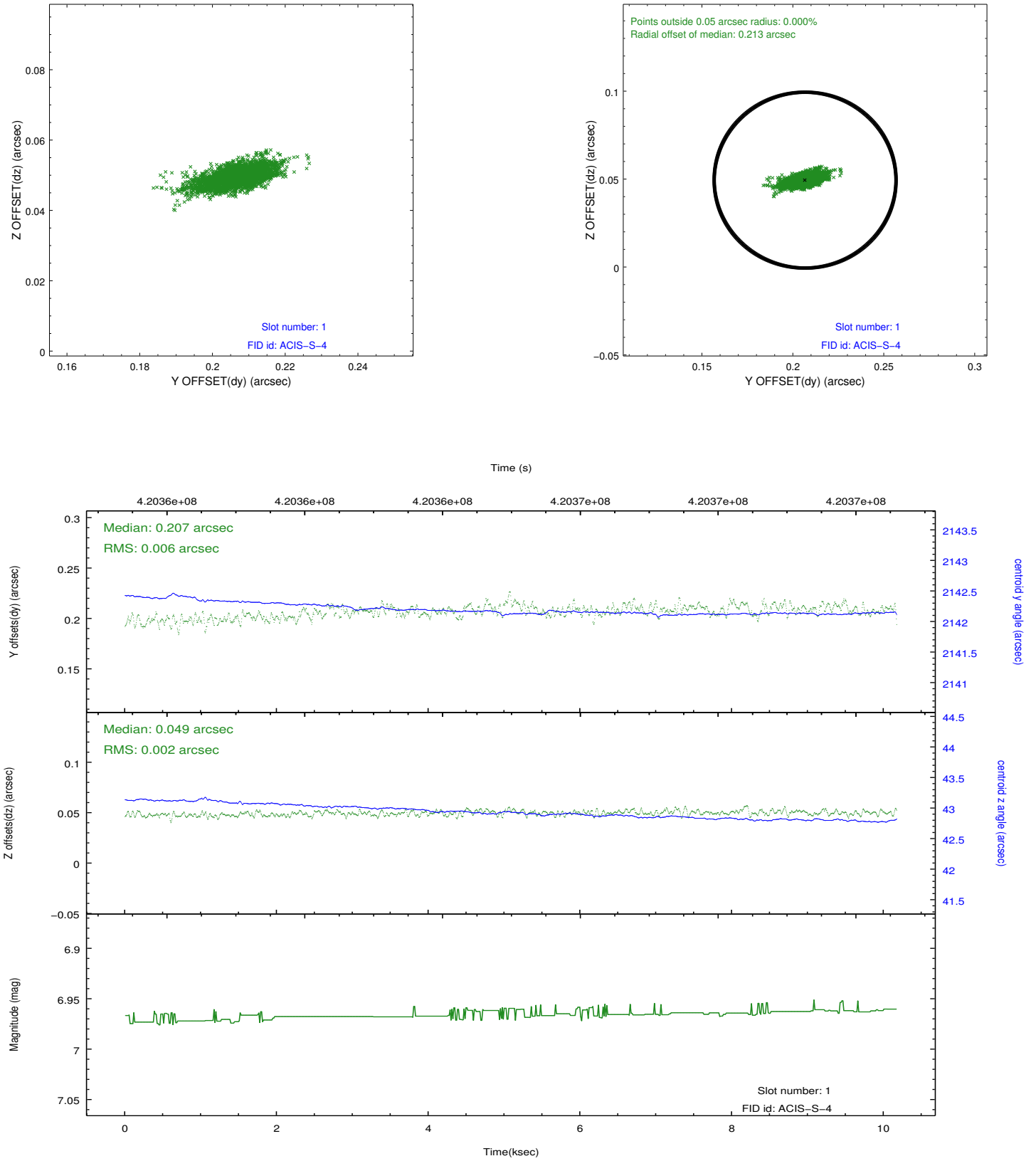


2.5 FID Slots

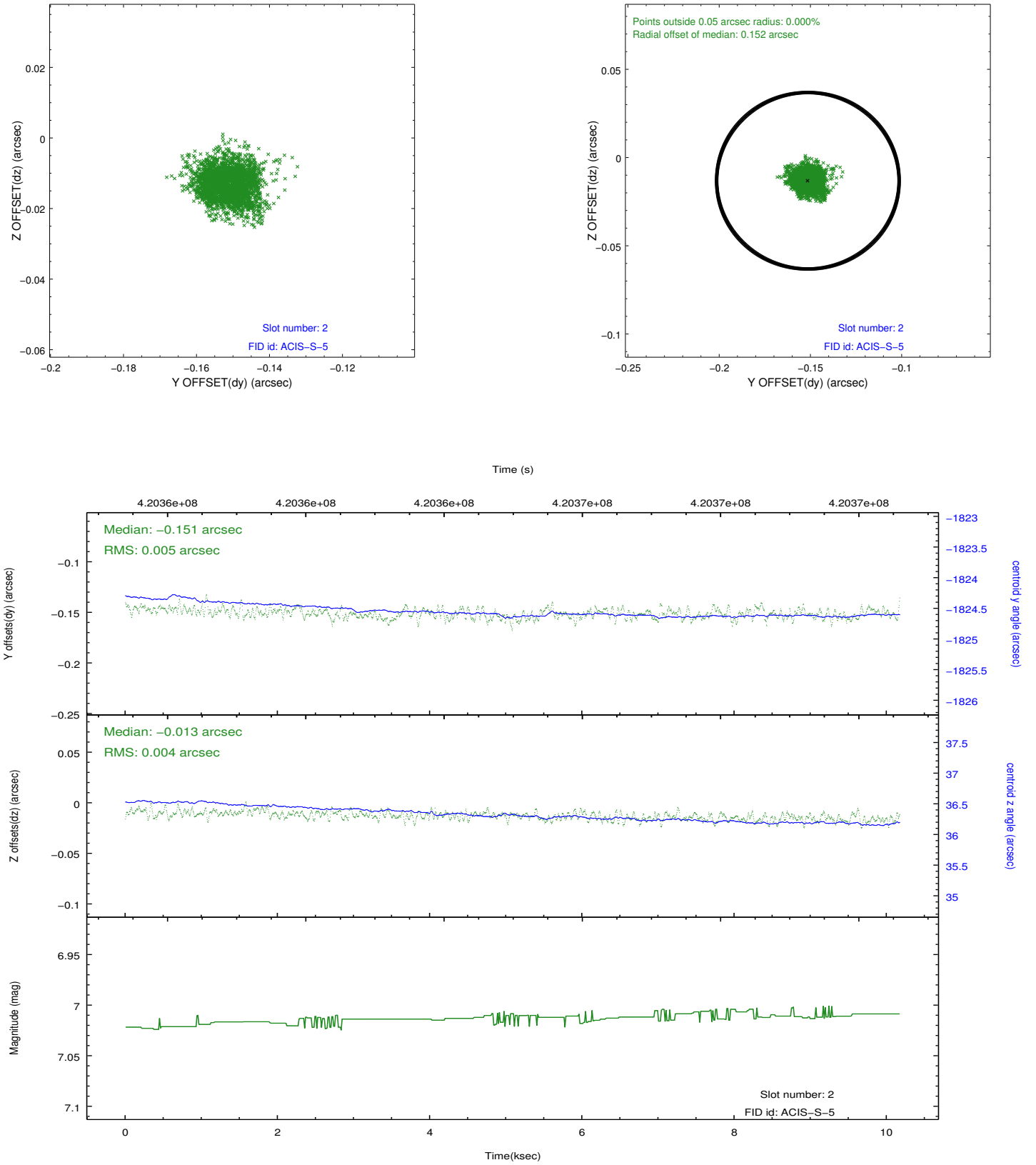
2.5.1 Slot 0



2.5.2 Slot 1



2.5.3 Slot 2



A Summary

A.1 Status

V&V Scientist	Beth Sundheim
V&V Date (YYYY-MM-DD)	2012.02.15
V&V Edition	1
V&V Disposition and Status	OK
V&V Charge Time	10

A.2 Comments

Special dither pattern of 1 arcsec used.

==

The high count rate resulted in telemetry saturation and a large number of dropped exposures. The ONTIME value reflects the lost exposure time.