

V&V Reference Report

L2 ASCDS Version : 8.4.3

Observation 12562 - L2 Version 2
Chandra X-Ray Center

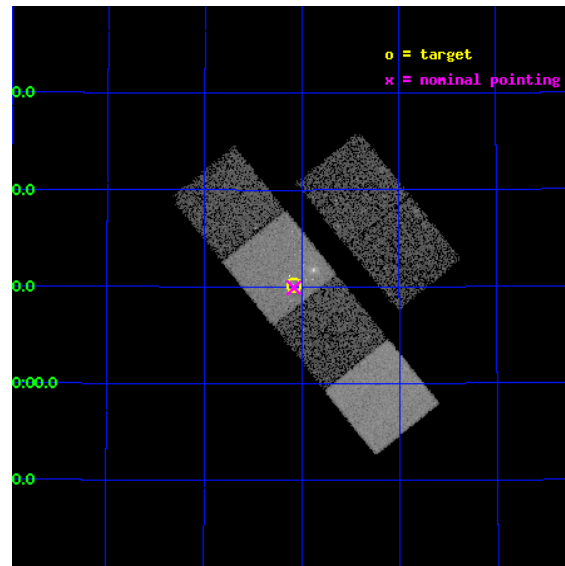
L2 Processing Date : Feb 12 2012

Contents

1	Front	2
2	OBI	3
2.1	OBI	3
2.1.1	Images	3
2.1.2	Bias	3
2.1.3	Parameters	4
2.1.4	Events	4
2.2	Compared Parameters	5
2.3	Aspect	6
2.4	Star Slots	9
2.4.1	Slot 3	9
2.4.2	Slot 4	10
2.4.3	Slot 5	11
2.4.4	Slot 6	12
2.4.5	Slot 7	13
2.5	FID Slots	14
2.5.1	Slot 0	14
2.5.2	Slot 1	15
2.5.3	Slot 2	16
A	Summary	17
A.1	Status	17
A.2	Comments	17

1 Front

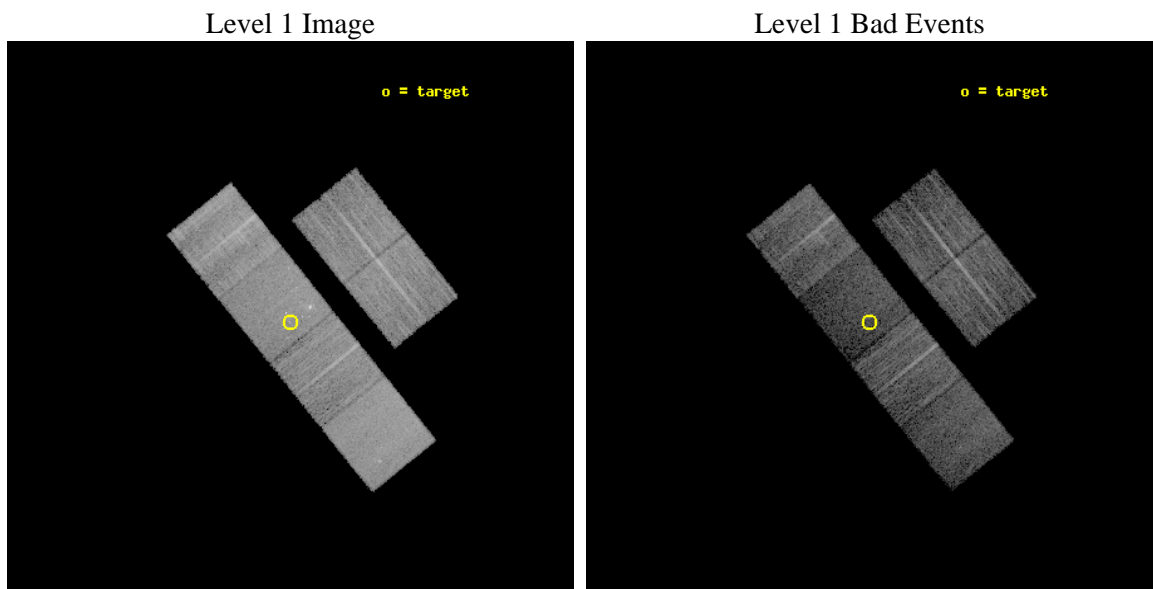
seq_num	501395	Sequence number
obs_id	12562	Observation id
title	Chandra Observations of New X-ray Supernovae	Proposal title
observer	David Pooley	Principal investigator
object	PTF11eon	Source name
dtcycle	0	
cycle	P	events from which exps? Prim/Second/Both
ra_targ	202.521167	Observer's specified target RA [deg]
dec_targ	47.169778	Observer's specified target Dec [deg]
ra_nom	202.52029399408	Nominal RA [deg]
dec_nom	47.16495786001	Nominal Dec [deg]
roll_nom	231.09937580098	Nominal Roll [deg]
revision	2	Processing version of data
ontime	9753.5999637246	Sum of GTIs [s]
livetime	9630.0940080711	Livetime [s]
ontime2	9753.5999637246	Sum of GTIs [s]
ontime3	9753.5999637246	Sum of GTIs [s]
ontime5	9753.5999637246	Sum of GTIs [s]
ontime6	9753.5999637246	Sum of GTIs [s]
ontime7	9753.5999637246	Sum of GTIs [s]
ontime8	9747.1180031896	Sum of GTIs [s]
l2events	99075	Number of level 2 events



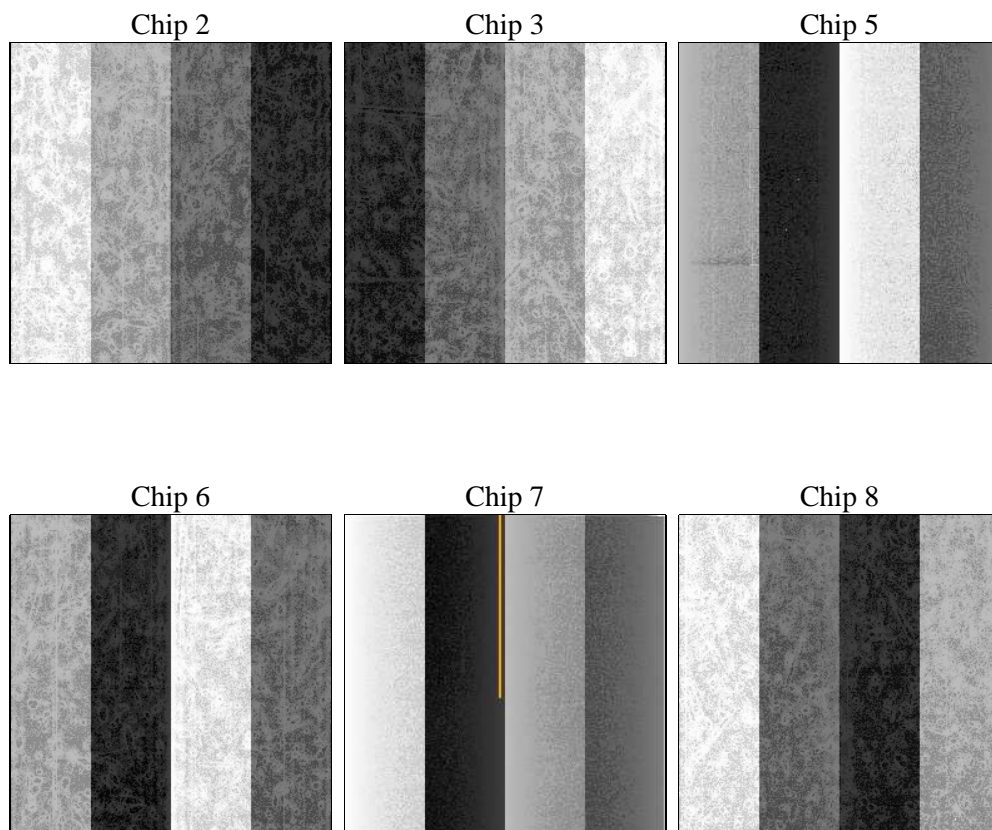
2 OBI

2.1 OBI

2.1.1 Images



2.1.2 Bias



2.1.3 Parameters

obi_num	0	Obi number	sched_exp_time	10000.478000	[s] Scheduled observation exposure time
ascdsver	8.4.3	Processing system revision	ontime	9753.5999637246	Sum of GTIs [s]
caldbver	4.4.7	 	ontime2	9753.5999637246	Sum of GTIs [s]
date	2012-02-12T10:55:04	Date and time of file creation	ontime3	9753.5999637246	Sum of GTIs [s]
revision	2	Processing version of data	ontime5	9753.5999637246	Sum of GTIs [s]
			ontime6	9753.5999637246	Sum of GTIs [s]
			ontime7	9753.5999637246	Sum of GTIs [s]
			ontime8	9747.1180031896	Sum of GTIs [s]
			l1events	394741	Number of level 1 events

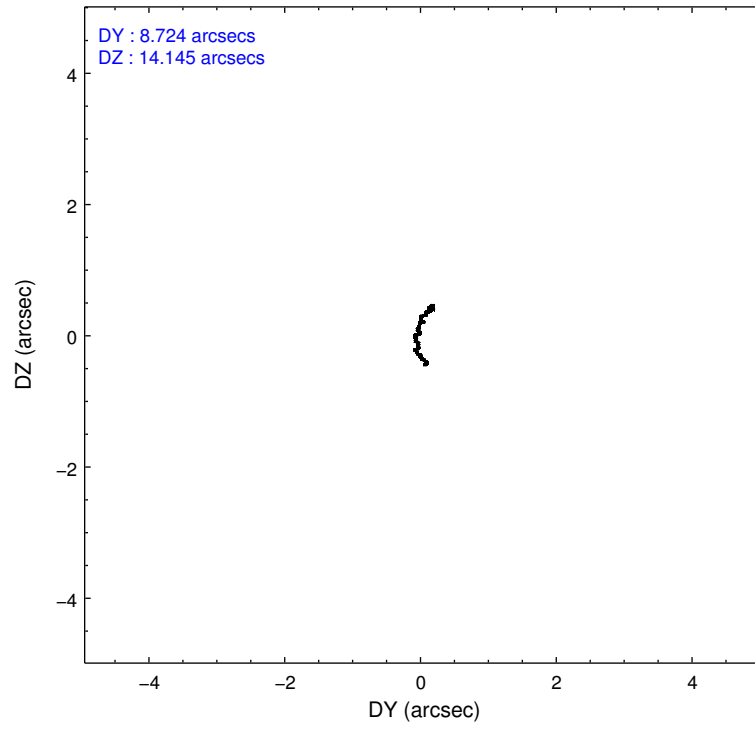
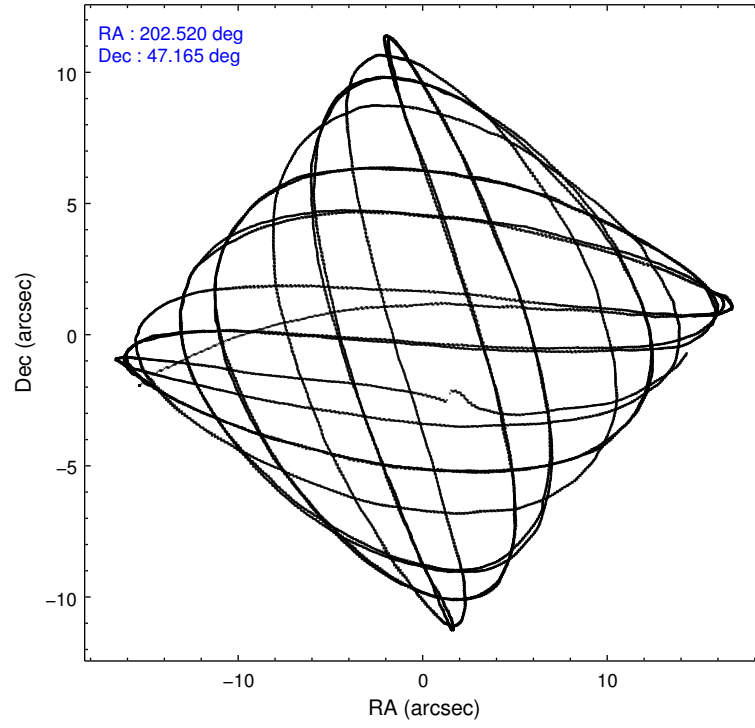
2.1.4 Events

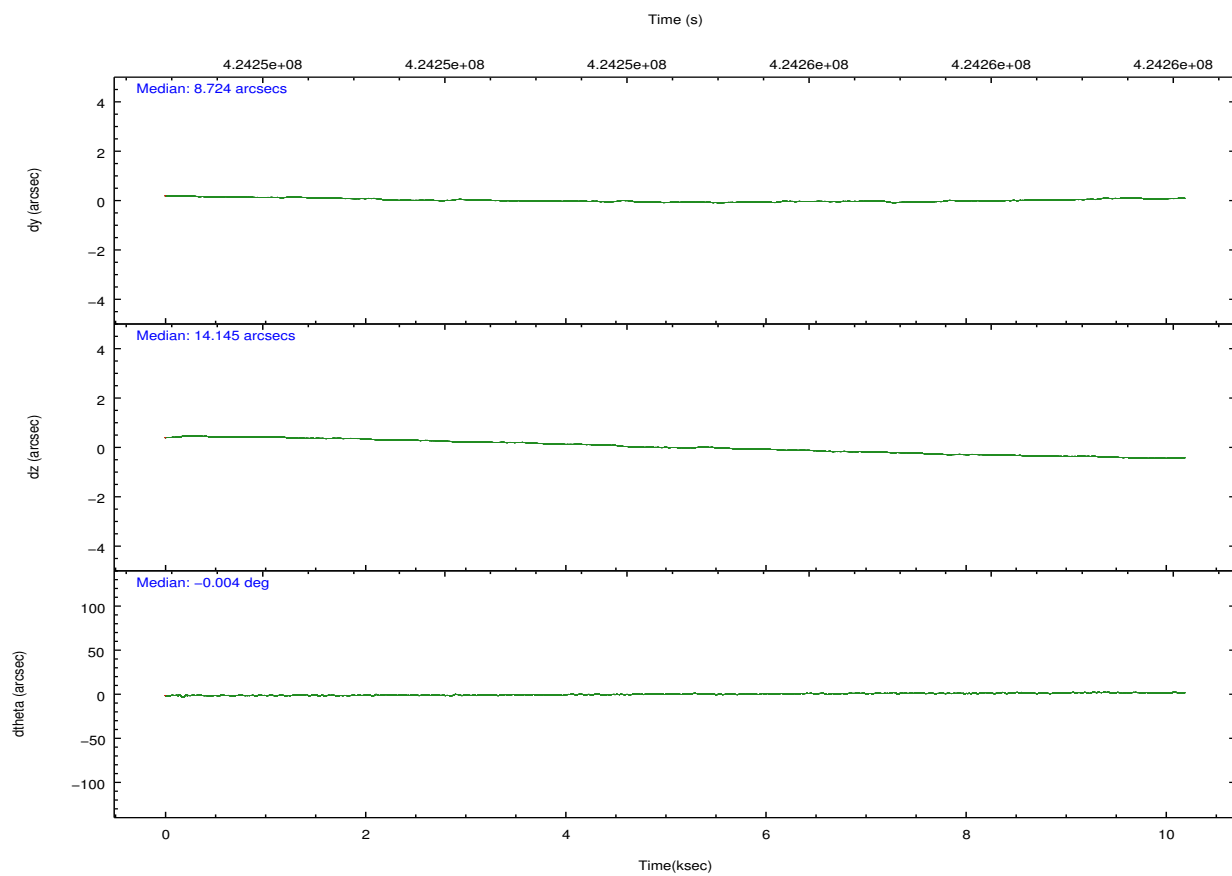
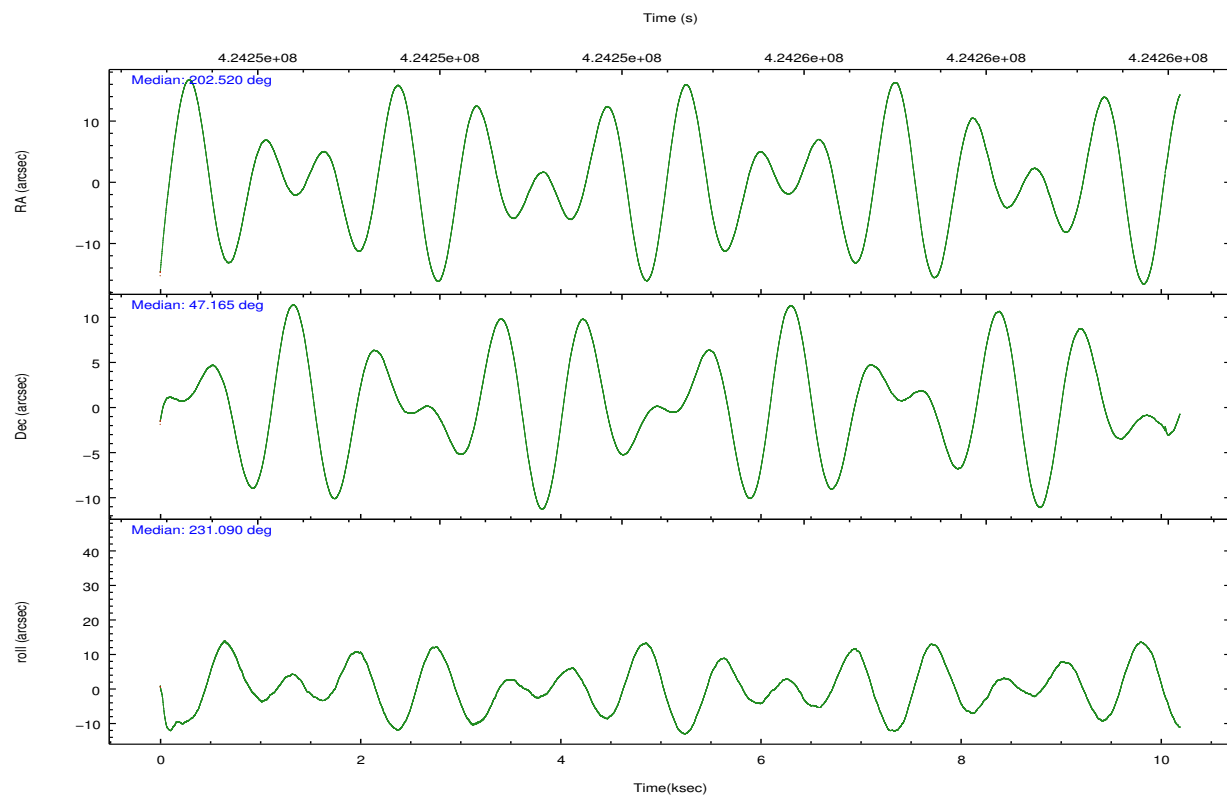
	ccd 2	ccd 3	ccd 5	ccd 6	ccd 7	ccd 8		ccd 2	ccd 3	ccd 5	ccd 6	ccd 7	ccd 8
level 1 events	58658	53432	80177	57201	67429	77844	grade 0 events	2557	2465	3194	2562	4773	5886
rejected events	52022	47116	38234	50265	31885	56968		4%	4%	3%	4%	7%	7%
rejected %	88%	88%	47%	87%	47%	73%	grade 1 events	43	35	157	41	82	63
								0%	0%	0%	0%	0%	0%
							grade 2 events	1592	1351	13047	1548	7760	4909
								2%	2%	16%	2%	11%	6%
							grade 3 events	637	677	1869	701	3290	2266
								1%	1%	2%	1%	4%	2%
							grade 4 events	644	661	1748	660	3379	2118
								1%	1%	2%	1%	5%	2%
							grade 5 events	1917	2258	6633	2338	6703	3540
								3%	4%	8%	4%	9%	4%
							grade 6 events	1207	1164	22101	1465	16347	5700
								2%	2%	27%	2%	24%	7%
							grade 7 events	50061	44821	31428	47886	25095	53362
								85%	83%	39%	83%	37%	68%

2.2 Compared Parameters

Parameter	Planned	Actual	Parameter	Planned	Actual
Instrument	ACIS	ACIS	Obspar format version number	7	7
Detector	ACIS-235678	ACIS-235678	Obspar file type	PREDICTED	ACTUAL
Grating	NONE	NONE	Obspar update status	NONE	UPDATED
Data mode	VFAINT	VFAINT	CCD I0 on	N	N
Observation mode	POINTING	POINTING	CCD I1 on	N	N
[deg] Pointing RA	202.525957	202.5202939940774	CCD I2 on	O1	Y
[deg] Pointing Dec	47.192035	47.16495786001003	CCD I3 on	O2	Y
[deg] Pointing Roll	230.938597	231.0993758009803	CCD S0 on	N	N
[mm] SIM focus pos	-0.684267	-0.6828225247311905	CCD S1 on	Y	Y
[mm] SIM defocus	0	0.001444936568705701	CCD S2 on	Y	Y
[mm] SIM translation stage pos	-190.132523	-190.145094680475	CCD S3 on	Y	Y
[mm] SIM translation stage offset	0	0.01257209746719923	CCD S4 on	Y	Y
[s] Observation start time (MET)	424249626.184000	424248748.21181	CCD S5 on	N	N
Observation start date	2011-06-12T07:06:00	2011-06-12T06:52:28	Number of optional ACIS chips dropped	0	0
[s] Observation end time (MET)	424259626.184000	424259852.03739	On-chip summing requested	N	N
Observation end date	2011-06-12T09:52:40	2011-06-12T09:57:32	Subarray requested	NONE	NONE
Read mode	TIMED	TIMED	Alternating exposures requested	N	N
			[s] Primary exposure time	0.000000	3.2

2.3 Aspect



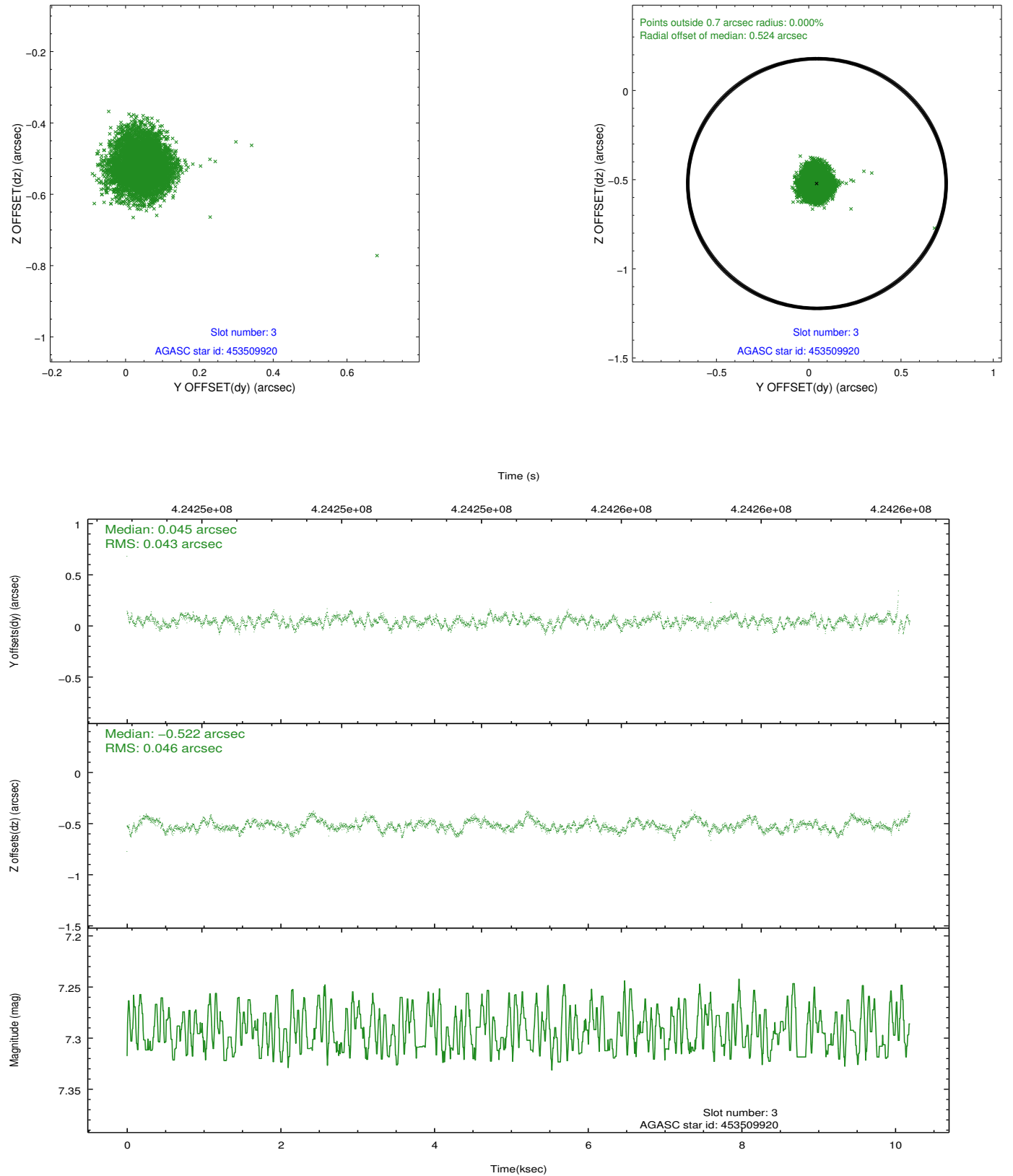


Slot Statistics

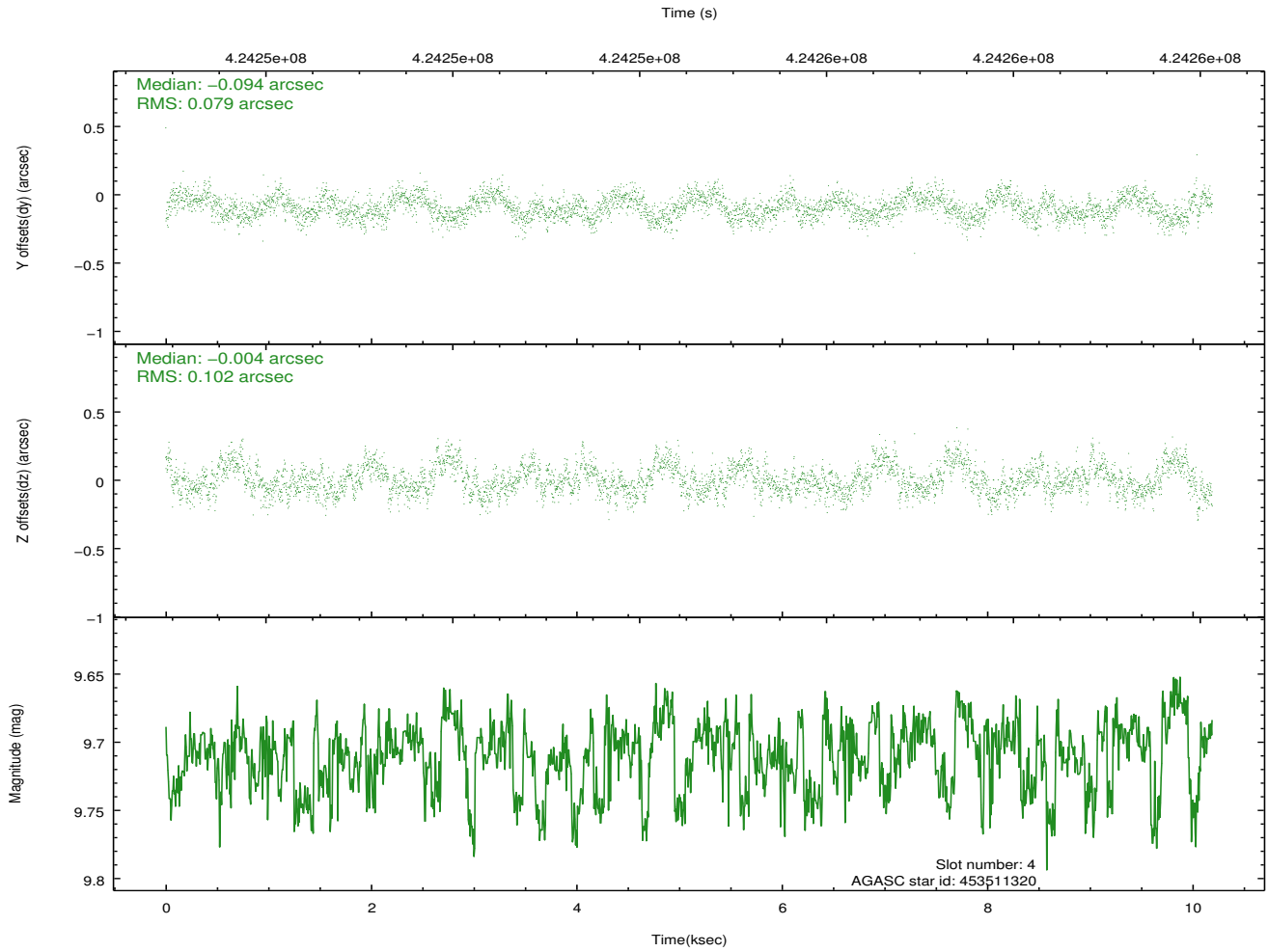
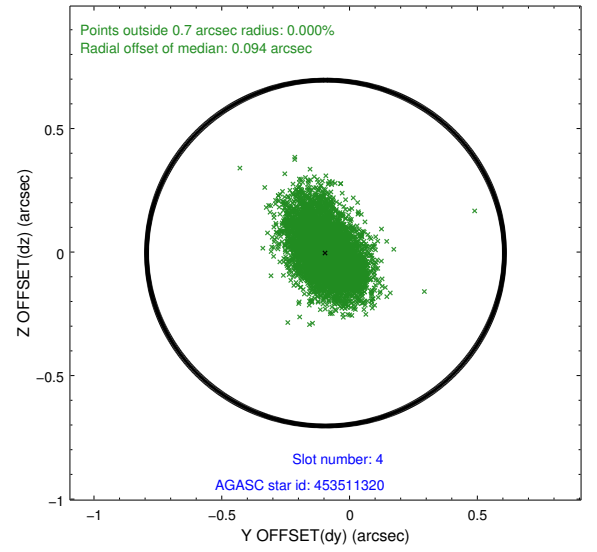
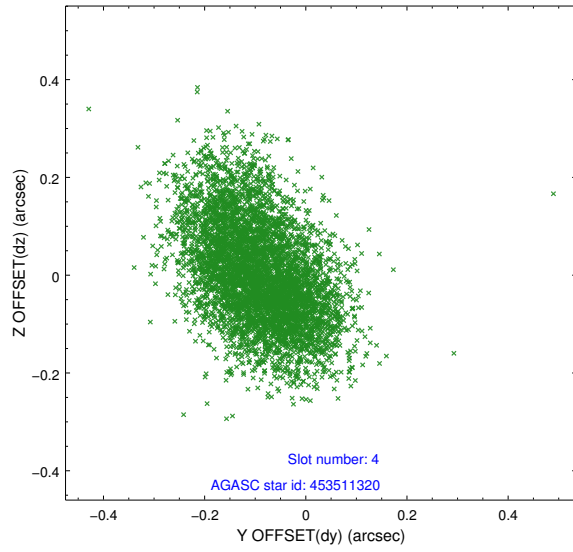
slot	status	id	mag	n_pts	med_dy	med_dz	dr1	dr2	ra	dec	mean_y	mean_z
0	FID	ACIS-S-2	6.92	2486	-0.021	-0.032	0.010	0.015	0.000000	0.000000	-761.56	-1735.45
1	FID	ACIS-S-4	7.01	2486	0.137	0.019	0.009	0.016	0.000000	0.000000	2151.64	172.56
2	FID	ACIS-S-5	7.03	2486	-0.147	0.022	0.008	0.014	0.000000	0.000000	-1813.87	166.81
3	GUIDE	453509920	7.29	4972	0.045	-0.522	0.067	0.104	202.256826	47.847140	-1421.71	-1992.27
4	GUIDE	453511320	9.71	4964	-0.094	-0.004	0.136	0.227	201.652270	47.423457	685.37	-2184.35
5	GUIDE	453511800	9.20	4959	0.349	-0.104	0.093	0.147	201.825327	46.820165	2122.11	-502.17
6	GUIDE	453904608	7.39	4972	-0.260	0.370	0.066	0.122	202.983748	47.234418	-825.85	771.06
7	GUIDE	454303504	9.70	4965	-0.048	0.234	0.129	0.227	202.757470	47.708424	-1796.98	-736.33

2.4 Star Slots

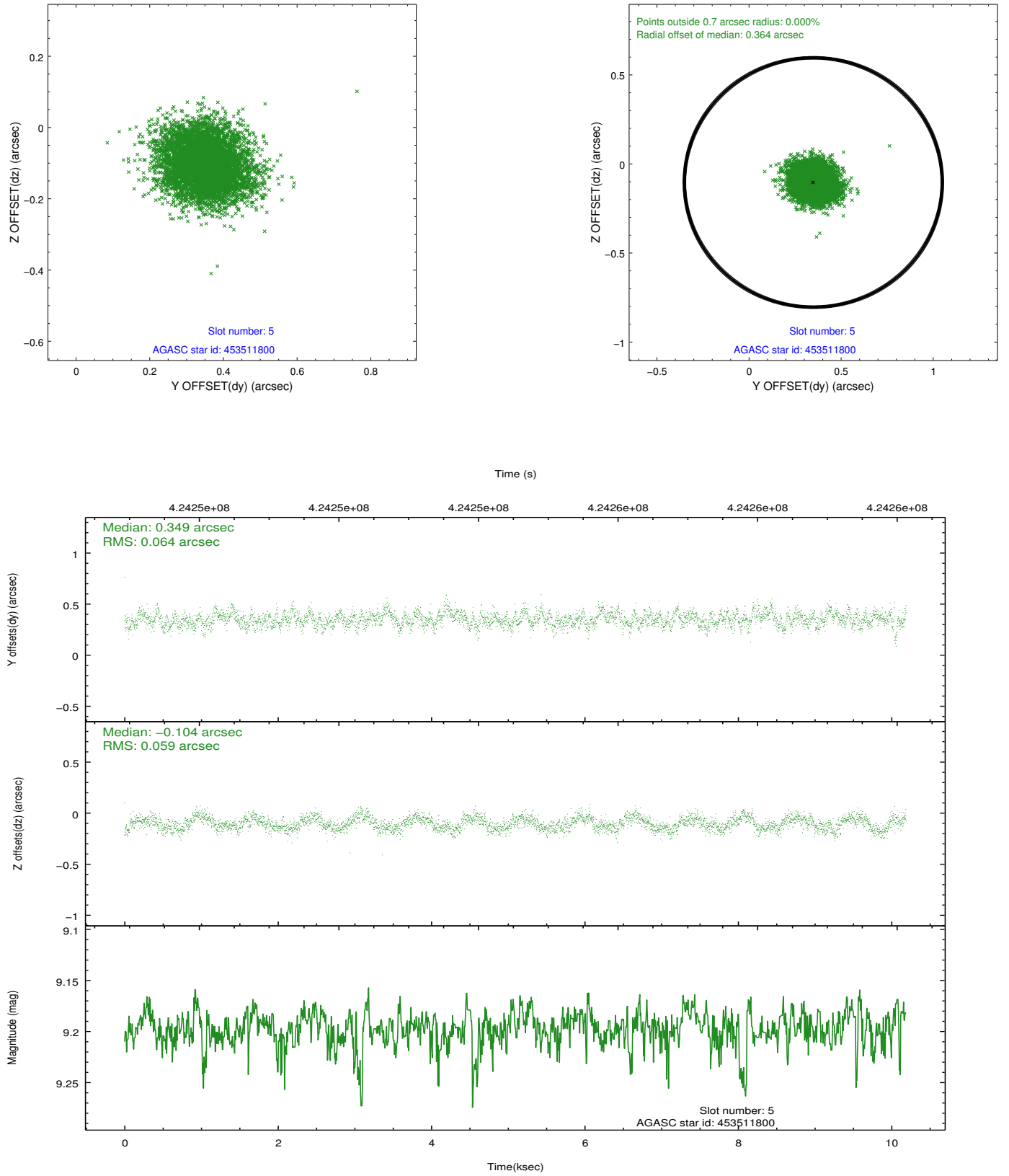
2.4.1 Slot 3



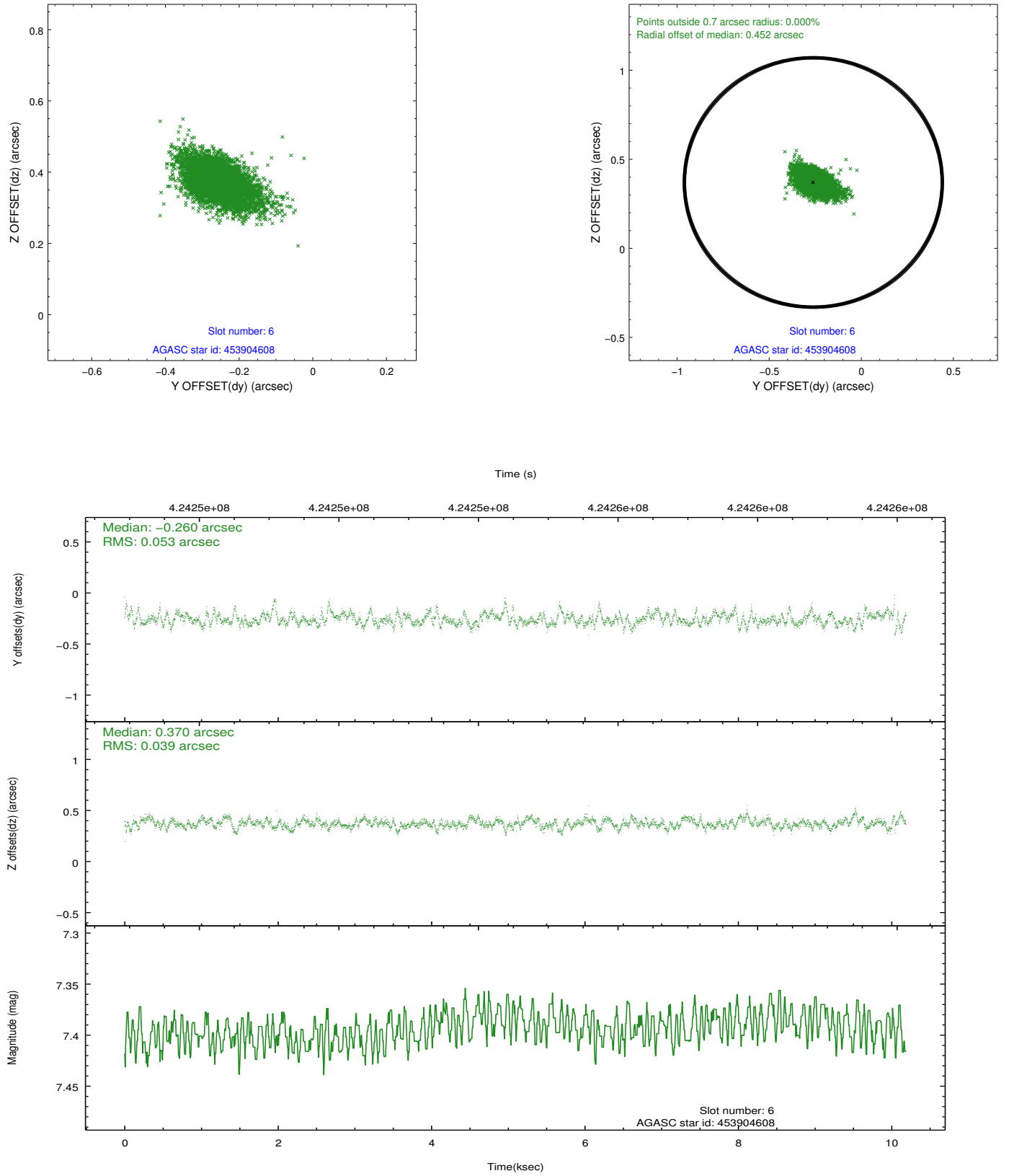
2.4.2 Slot 4



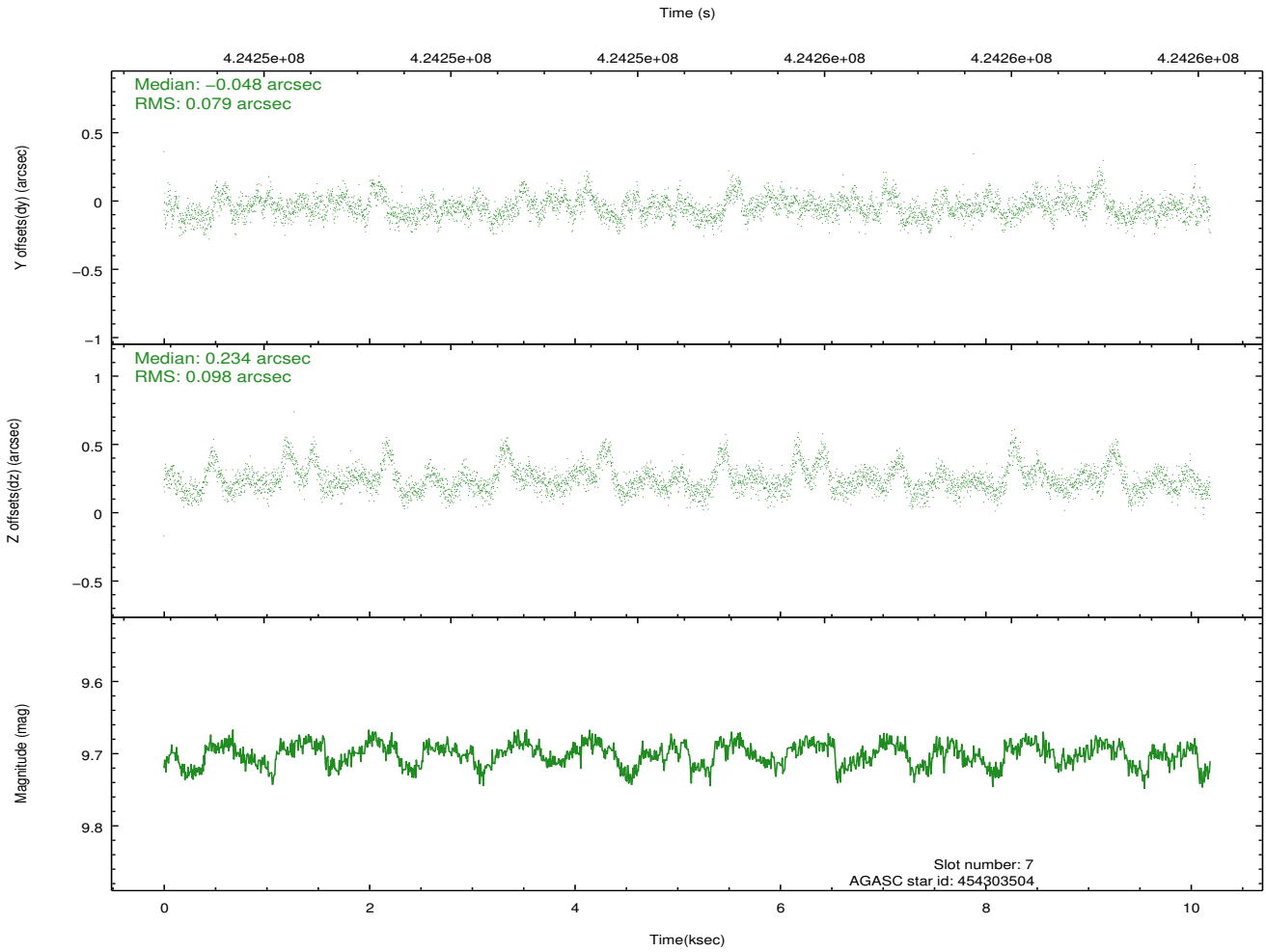
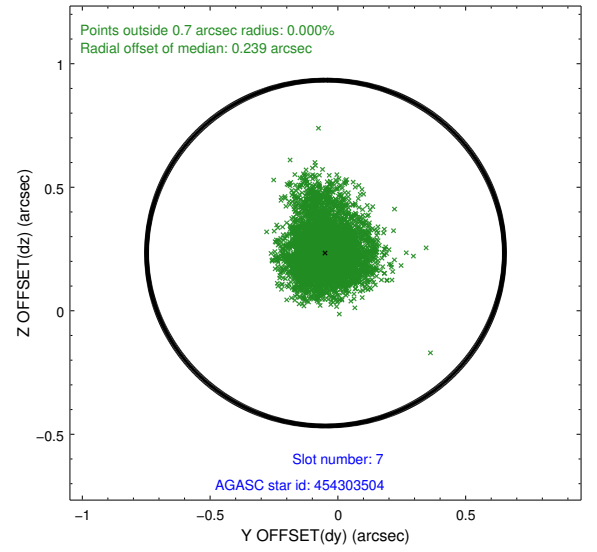
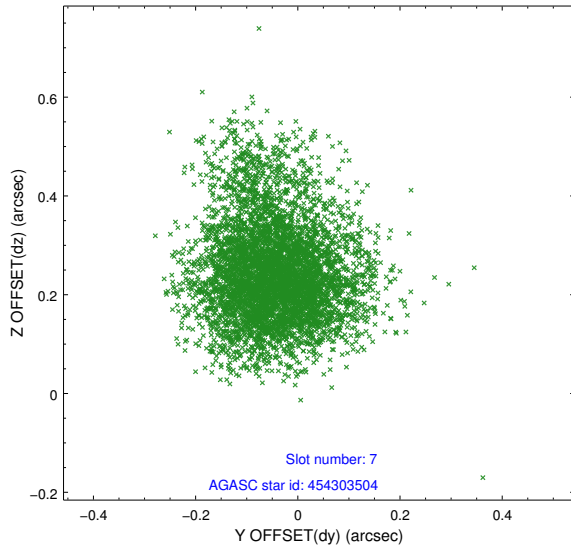
2.4.3 Slot 5



2.4.4 Slot 6

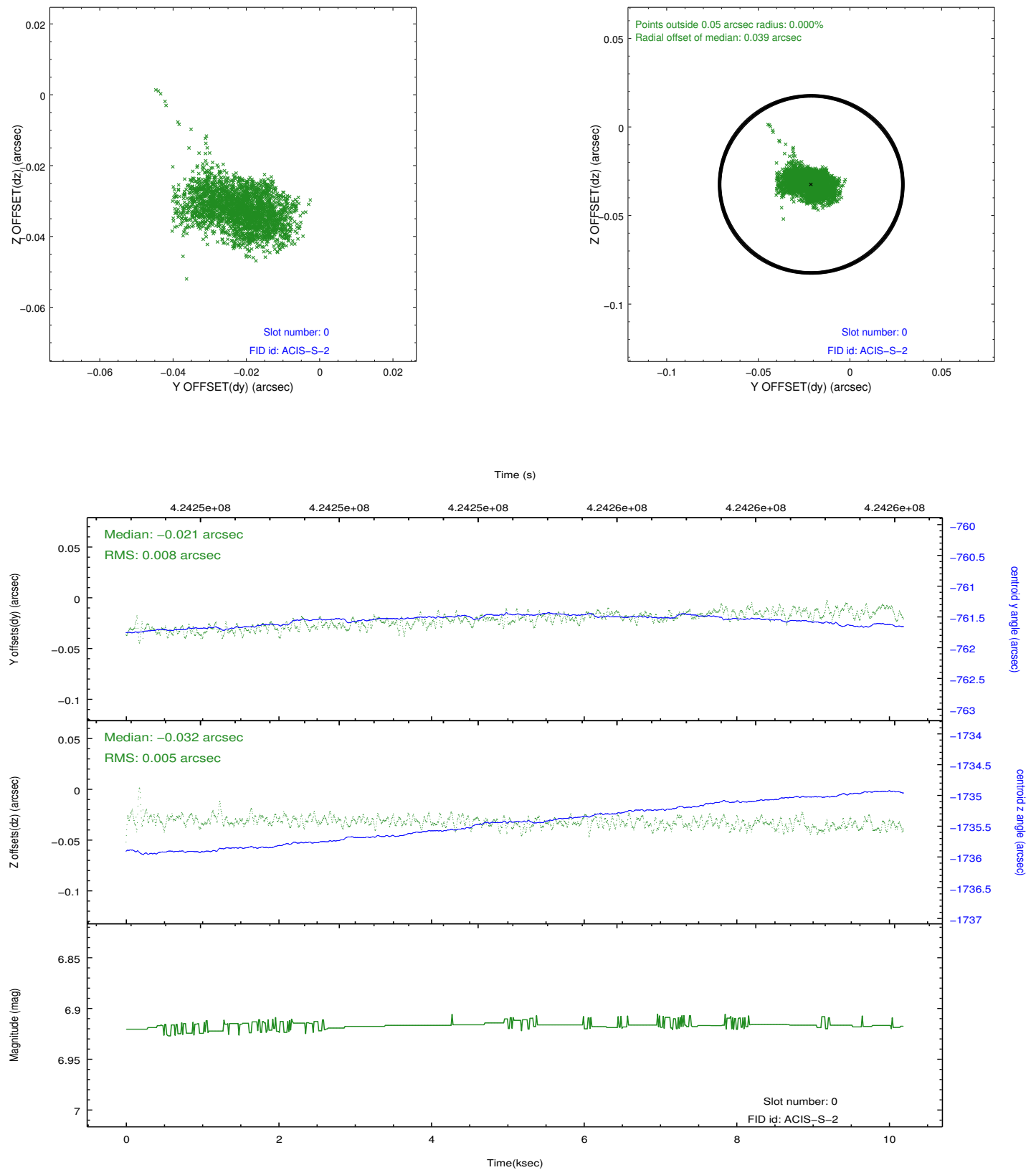


2.4.5 Slot 7

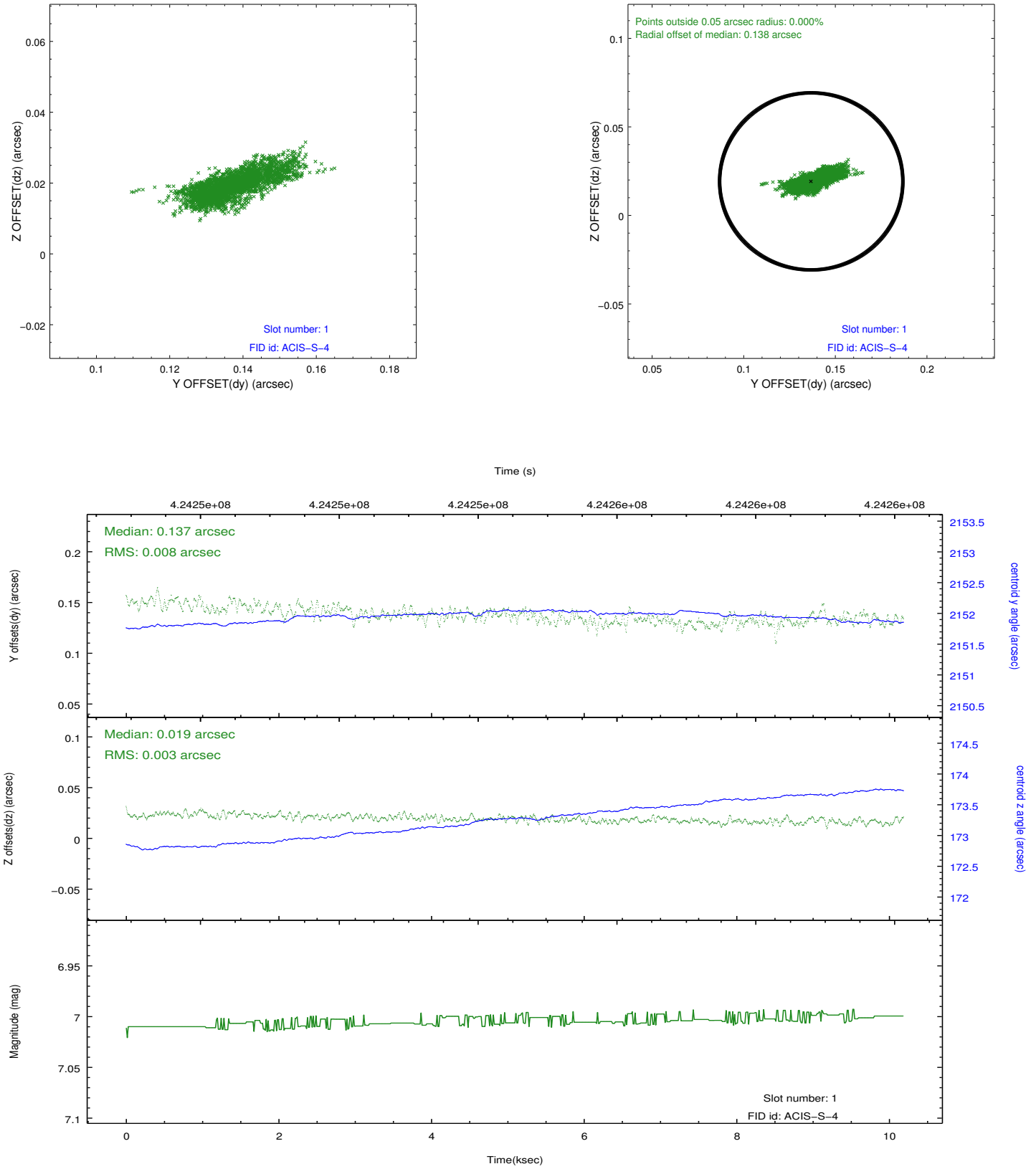


2.5 FID Slots

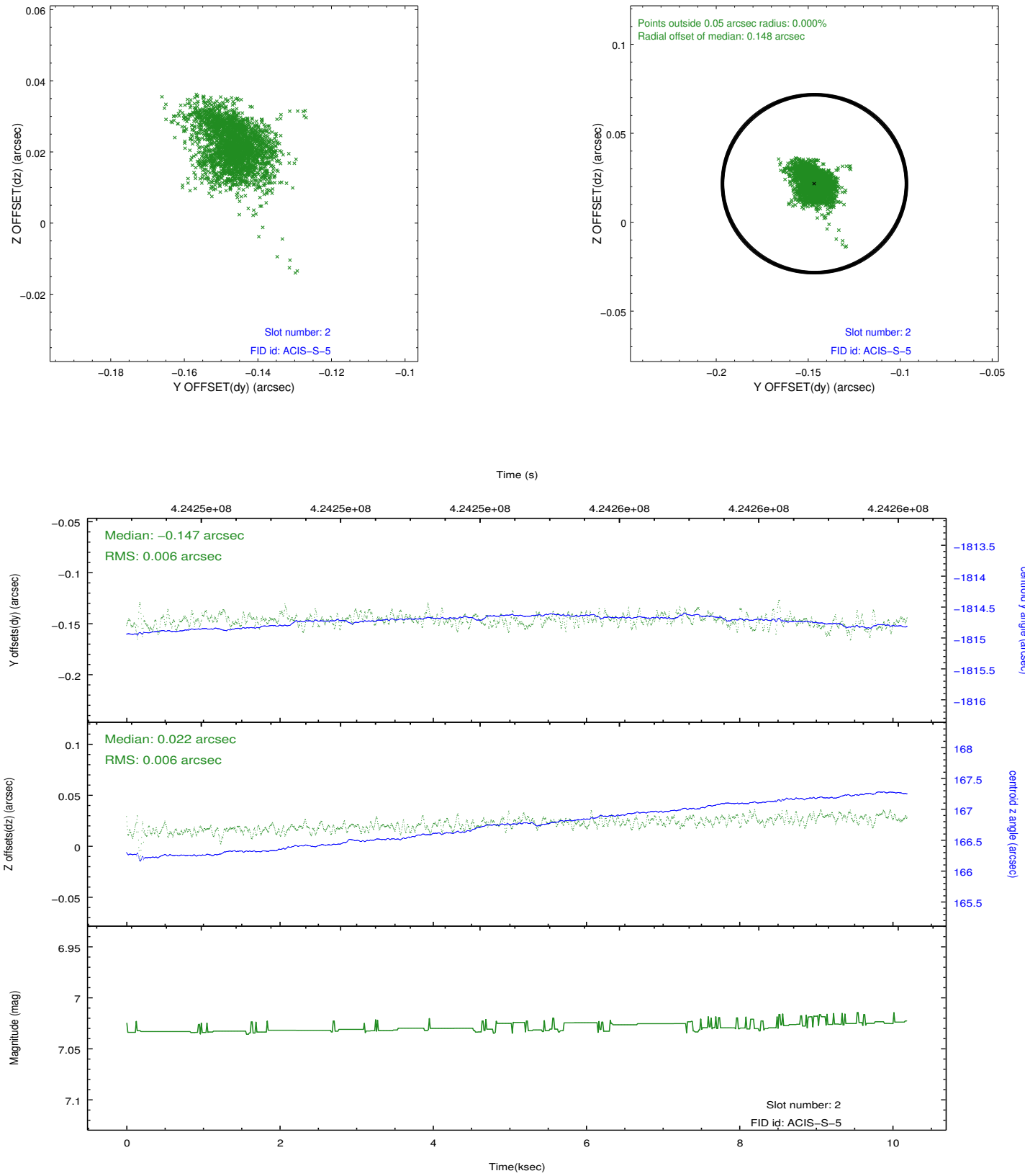
2.5.1 Slot 0



2.5.2 Slot 1



2.5.3 Slot 2



A Summary

A.1 Status

V&V Scientist	Jen Lauer
V&V Date (YYYY-MM-DD)	2012.02.14
V&V Edition	1
V&V Disposition and Status	OK
V&V Charge Time	9.7535999637246

A.2 Comments