

V&V Reference Report

L2 ASCDS Version : 8.4.5

Observation 13164 - L2 Version 2
Chandra X-Ray Center

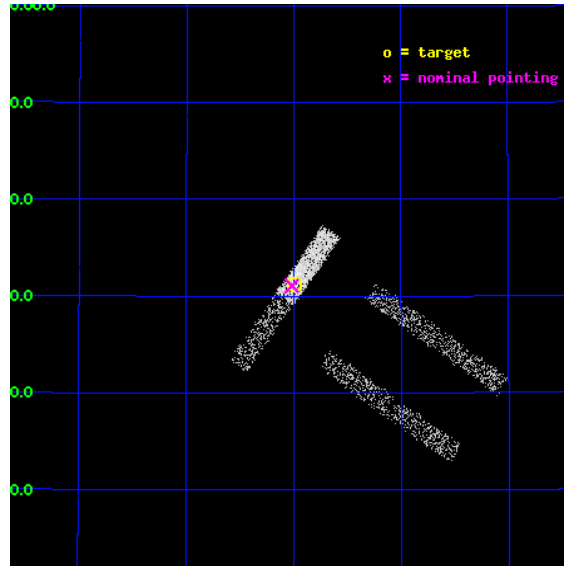
L2 Processing Date : Jul 6 2012

Contents

1	Front	2
2	OBI	3
2.1	OBI	3
2.1.1	Images	3
2.1.2	Bias	3
2.1.3	Parameters	4
2.1.4	Events	4
2.2	Compared Parameters	5
2.3	Aspect	6
2.4	Star Slots	9
2.4.1	Slot 3	9
2.4.2	Slot 4	10
2.4.3	Slot 5	11
2.4.4	Slot 6	12
2.4.5	Slot 7	13
2.5	FID Slots	14
2.5.1	Slot 0	14
2.5.2	Slot 1	15
2.5.3	Slot 2	16
A	Summary	17
A.1	Status	17
A.2	Comments	17

1 Front

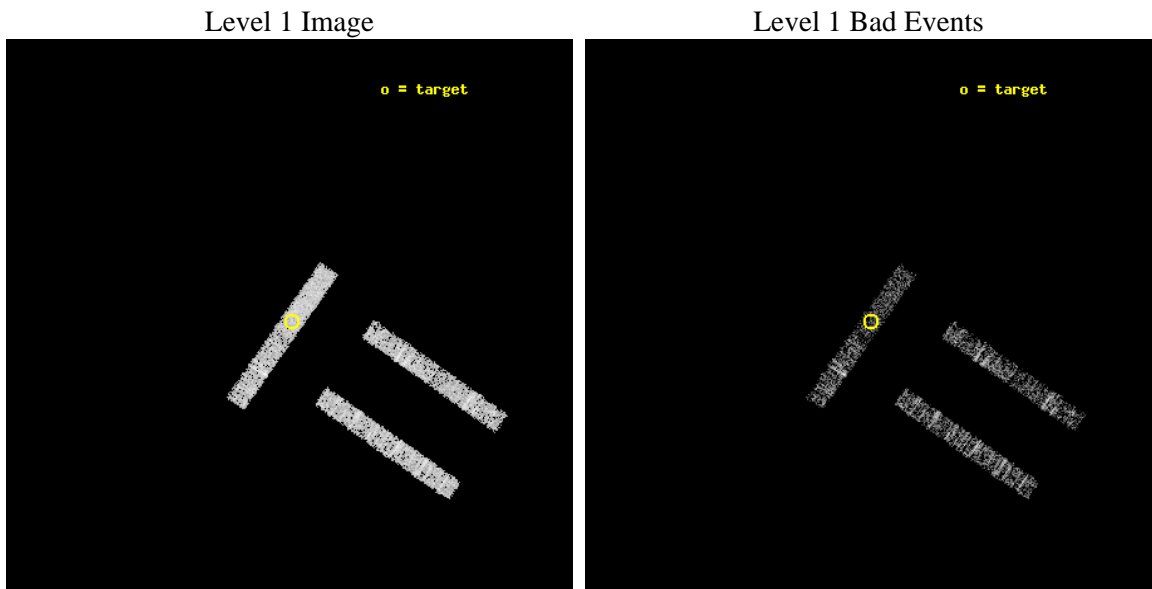
seq_num	401284	Sequence number
obs_id	13164	Observation id
title	Confirming the low-mass X-ray binaries in the Kepler field	Proposa
observer	Dr Jifeng Liu	Principal investigator
object	J194759.9+413111	Source name
dtcycle	0	
cycle	P	events from which exps? Prim/Second/Both
ra_targ	296.997917	Observer's specified target RA [deg]
dec_targ	41.519722	Observer's specified target Dec [deg]
ra_nom	297.00384972521	Nominal RA [deg]
dec_nom	41.517915560771	Nominal Dec [deg]
roll_nom	305.15269481863	Nominal Roll [deg]
revision	2	Processing version of data
ontime	2097.7000454664	Sum of GTIs [s]
livetime	2022.251673923	Livetime [s]
ontime0	2097.7000454664	Sum of GTIs [s]
ontime1	2097.7000454664	Sum of GTIs [s]
ontime2	2097.7000454664	Sum of GTIs [s]
ontime3	2097.7000454664	Sum of GTIs [s]
ontime6	2097.7000454664	Sum of GTIs [s]
ontime7	2097.7000454664	Sum of GTIs [s]
l2events	4689	Number of level 2 events



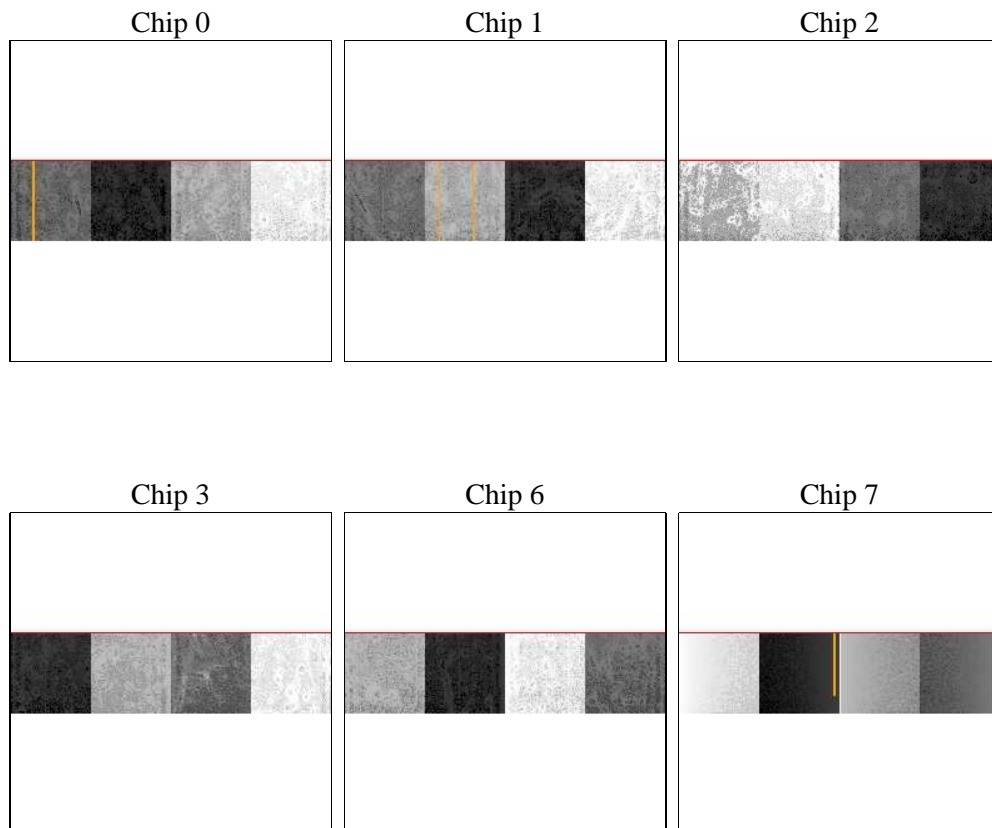
2 OBI

2.1 OBI

2.1.1 Images



2.1.2 Bias



2.1.3 Parameters

obi_num	0	Obi number	sched_exp_time	2000.000000	[s] Scheduled observation exposure time
ascdsver	8.4.5	Processing system revision	ontime	2097.7000454664	Sum of GTIs [s]
caldsver	4.5.0	 	ontime0	2097.7000454664	Sum of GTIs [s]
date	2012-07-06T14:19:46	Date and time of file creation	ontime1	2097.7000454664	Sum of GTIs [s]
revision	2	Processing version of data	ontime2	2097.7000454664	Sum of GTIs [s]
			ontime3	2097.7000454664	Sum of GTIs [s]
			ontime6	2097.7000454664	Sum of GTIs [s]
			ontime7	2097.7000454664	Sum of GTIs [s]
			l1events	27238	Number of level 1 events

2.1.4 Events

	ccd 0	ccd 1	ccd 2	ccd 3	ccd 6	ccd 7
level 1 events	4742	3798	4633	4293	4358	5414
rejected events	4246	3244	4154	3810	3831	2669
rejected %	89%	85%	89%	88%	87%	49%

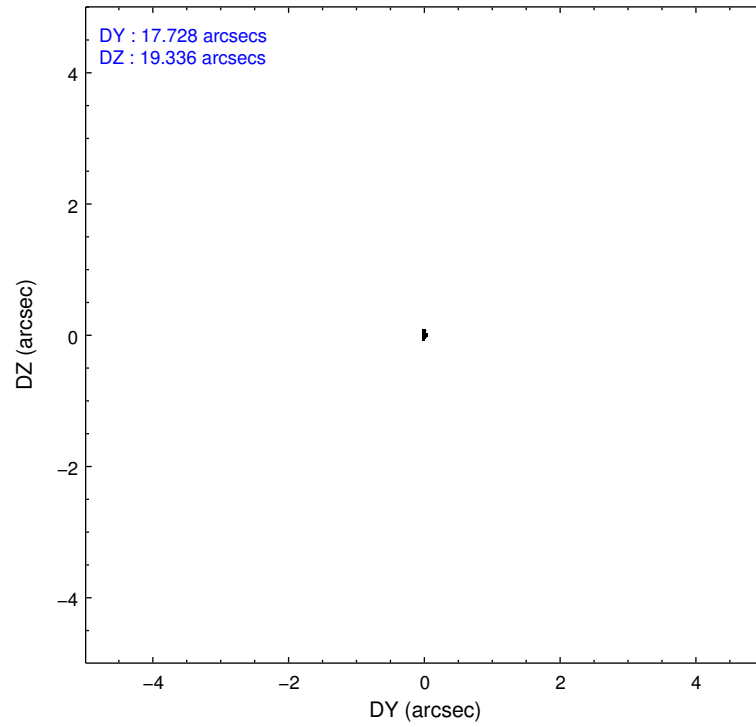
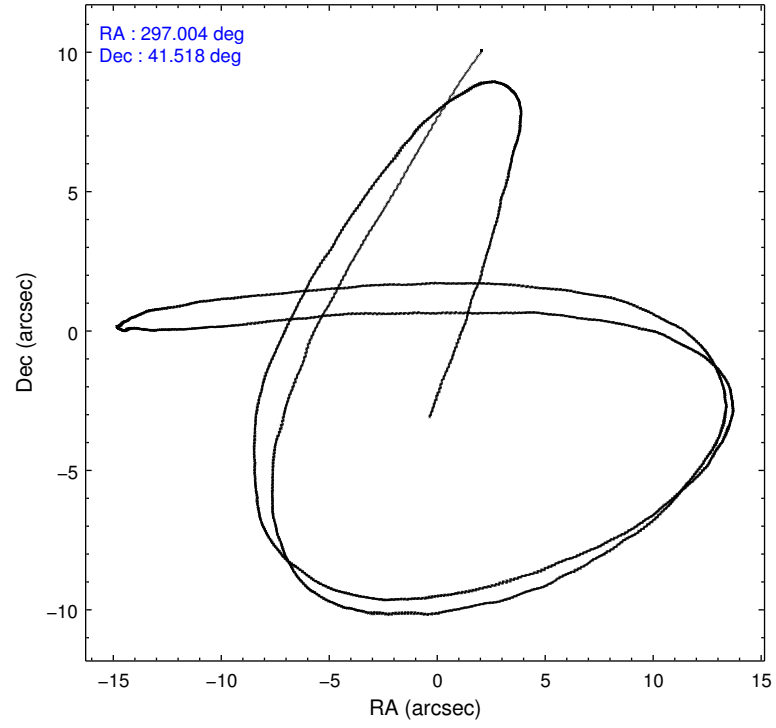
	ccd 0	ccd 1	ccd 2	ccd 3	ccd 6	ccd 7
grade 0 events	143	192	179	144	168	361
	3%	5%	3%	3%	3%	6%
grade 1 events	2	3	2	2	0	6
	0%	0%	0%	0%	0%	0%
grade 2 events	119	95	113	85	118	664
	2%	2%	2%	1%	2%	12%
grade 3 events	75	72	53	78	62	286
	1%	1%	1%	1%	1%	5%
grade 4 events	66	91	57	65	73	296
	1%	2%	1%	1%	1%	5%
grade 5 events	181	149	165	197	165	538
	3%	3%	3%	4%	3%	9%
grade 6 events	94	104	77	111	106	1138
	1%	2%	1%	2%	2%	21%
grade 7 events	4062	3092	3987	3611	3666	2125
	85%	81%	86%	84%	84%	39%

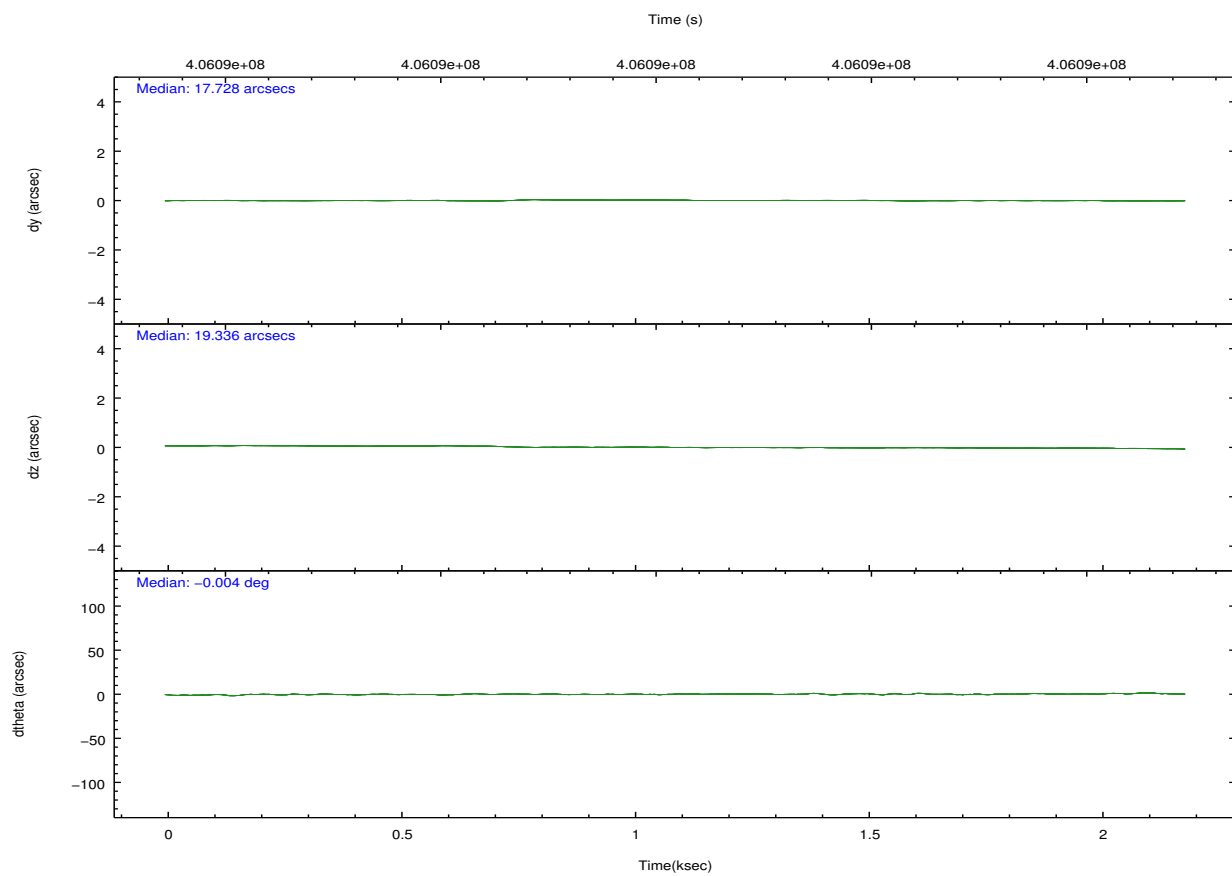
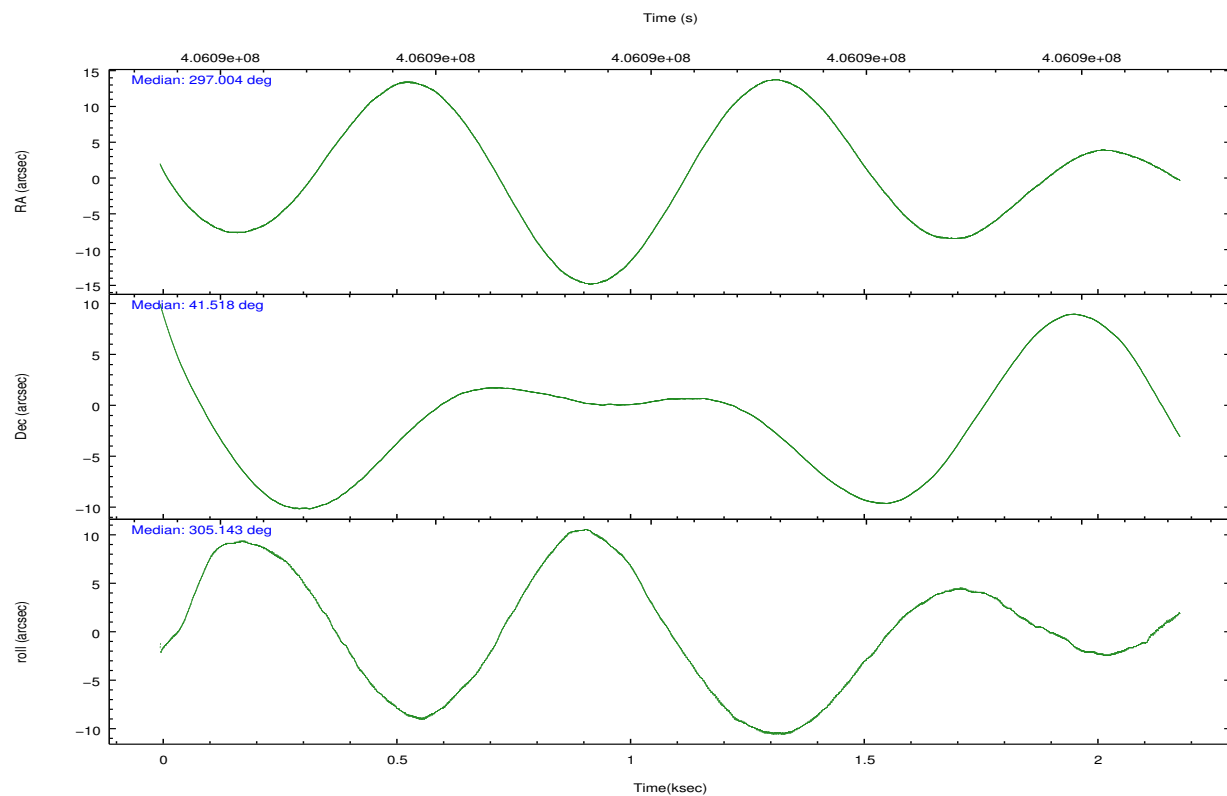
2.2 Compared Parameters

Parameter	Planned	Actual
Instrument	ACIS	ACIS
Detector	ACIS-012367	ACIS-012367
Grating	NONE	NONE
Data mode	FAINT	FAINT
Observation mode	POINTING	POINTING
[deg] Pointing RA	296.970530	297.0038497252144
[deg] Pointing Dec	41.528964	41.51791556077109
[deg] Pointing Roll	305.018158	305.1526948186277
[mm] SIM focus pos	-0.684267	-0.6828225247311905
[mm] SIM defocus	0	0.001444936568705701
[mm] SIM translation stage pos	-190.132523	-190.145094680475
[mm] SIM translation stage offset	0	0.01257209746719923
[s] Observation start time (MET)	406091631.184000	406089980.5217
Observation start date	2010-11-14T03:12:45	2010-11-14T02:46:20
[s] Observation end time (MET)	406093631.184000	406094333.69693
Observation end date	2010-11-14T03:46:05	2010-11-14T03:58:53
Read mode	TIMED	TIMED

Parameter	Planned	Actual
Obspar format version number	7	7
Obspar file type	PREDICTED	ACTUAL
Obspar update status	NONE	UPDATED
Number of optional ACIS chips dropped	0	0
On-chip summing requested	N	N
Subarray requested	CUSTOM	1/4
Subarray start row	385	385
Subarray row count	256	256
Alternating exposures requested	N	N
[s] Primary exposure time	0.000000	1.1

2.3 Aspect



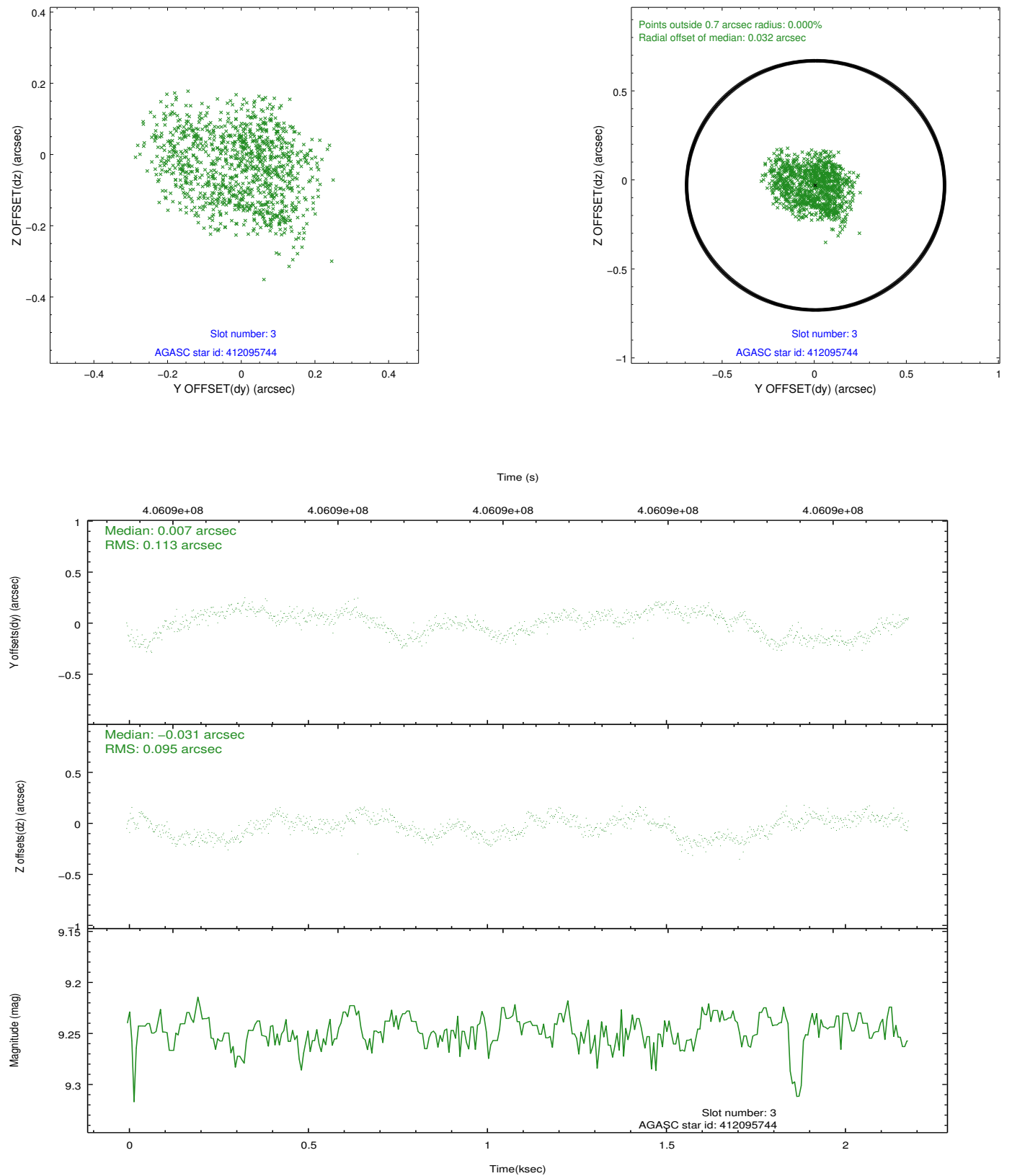


Slot Statistics

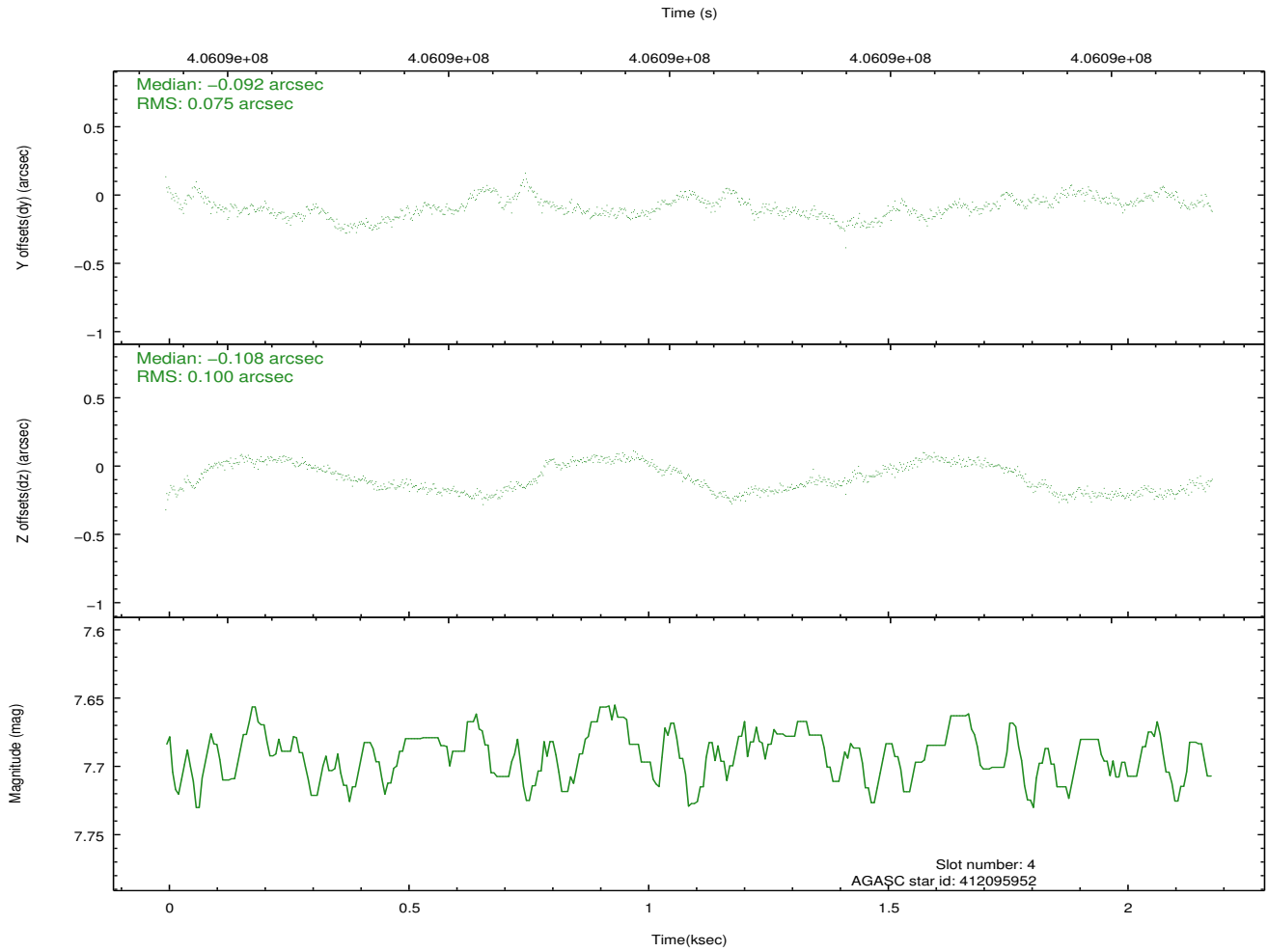
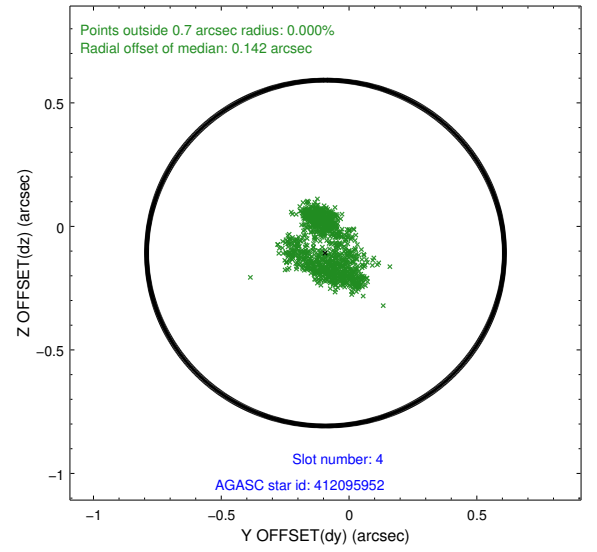
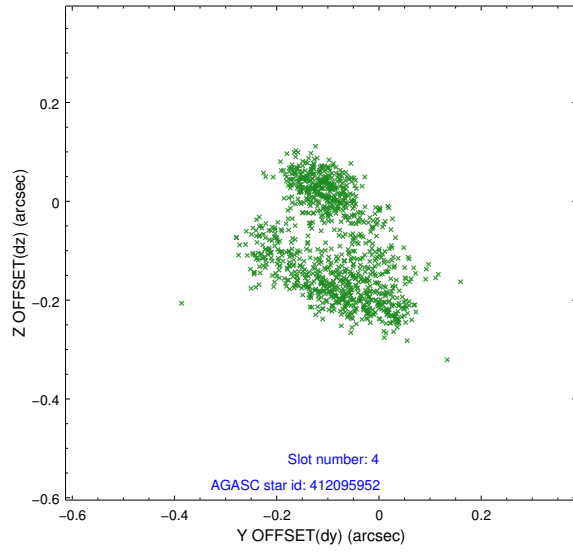
slot	status	id	mag	n_pts	med_dy	med_dz	dr1	dr2	ra	dec	mean_y	mean_z
0	FID	ACIS-S-2	6.88	533	-0.076	-0.022	0.008	0.014	0.000000	0.000000	-770.86	-1740.76
1	FID	ACIS-S-4	6.95	533	0.172	0.043	0.006	0.011	0.000000	0.000000	2141.30	164.67
2	FID	ACIS-S-5	6.99	533	-0.127	-0.011	0.007	0.011	0.000000	0.000000	-1819.93	161.70
3	GUIDE	412095744	9.25	1063	0.007	-0.031	0.166	0.241	297.319632	42.039255	-970.01	1819.55
4	GUIDE	412095952	7.69	1066	-0.092	-0.108	0.140	0.188	297.325576	41.582458	391.11	896.21
5	GUIDE	412098936	8.87	1066	0.122	-0.020	0.104	0.159	296.571381	41.333949	-44.54	-1284.01
6	GUIDE	412110512	8.59	1066	0.034	0.124	0.075	0.114	296.489933	41.824770	-1614.09	-444.06
7	GUIDE	411579192	8.21	1065	-0.067	0.023	0.075	0.127	296.832445	40.994319	1360.18	-1411.70

2.4 Star Slots

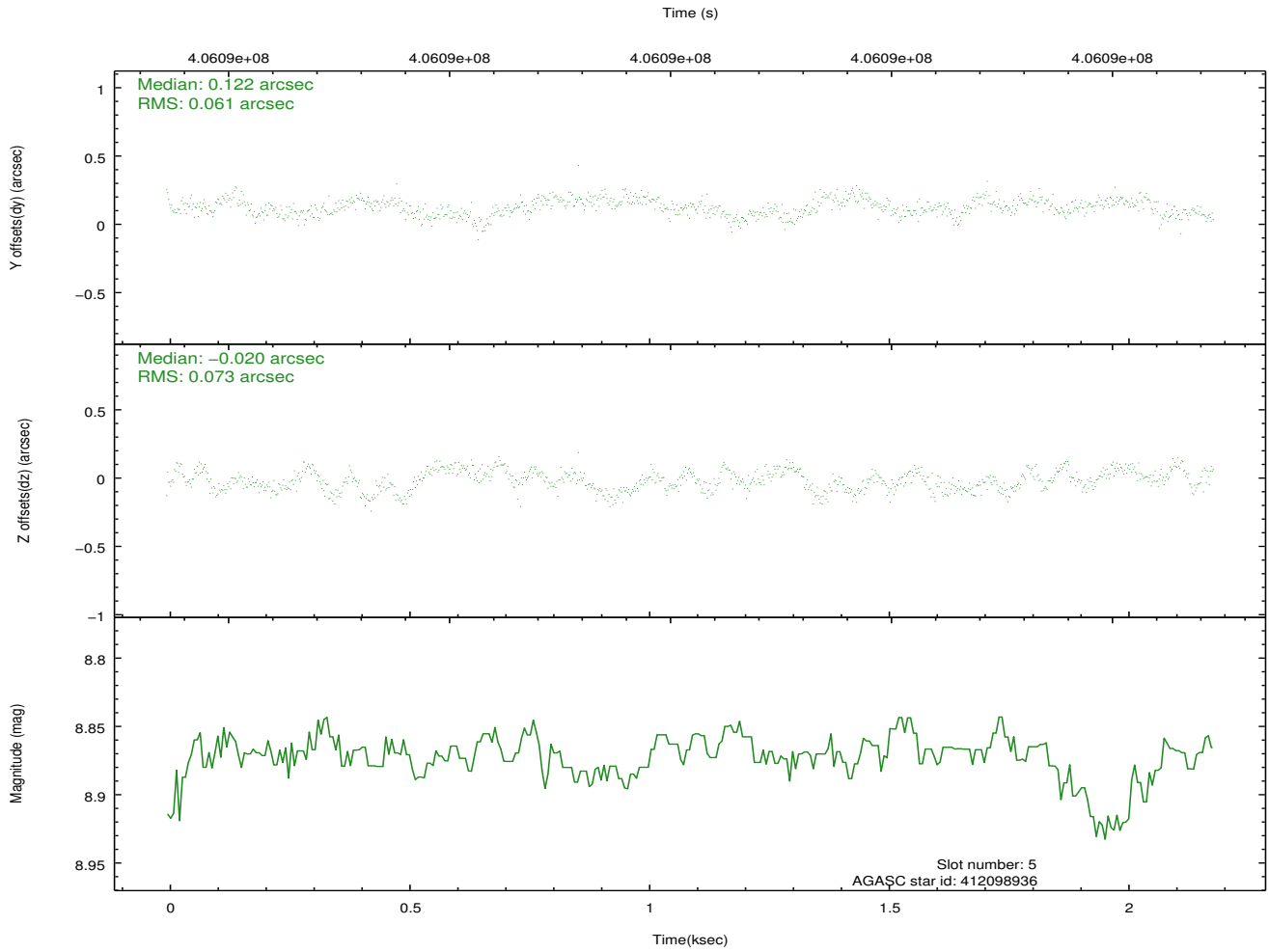
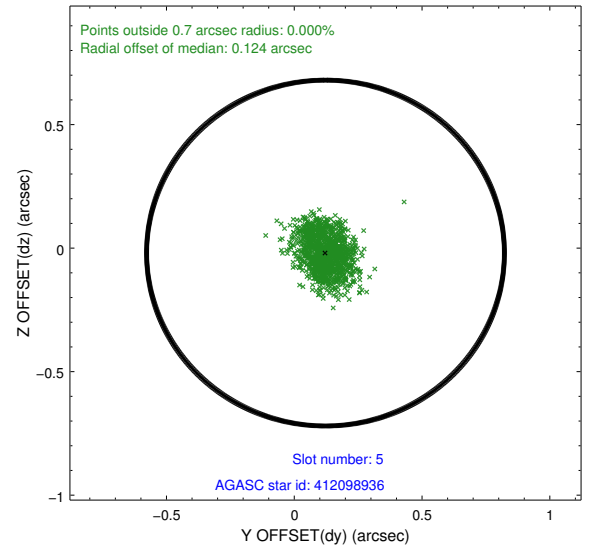
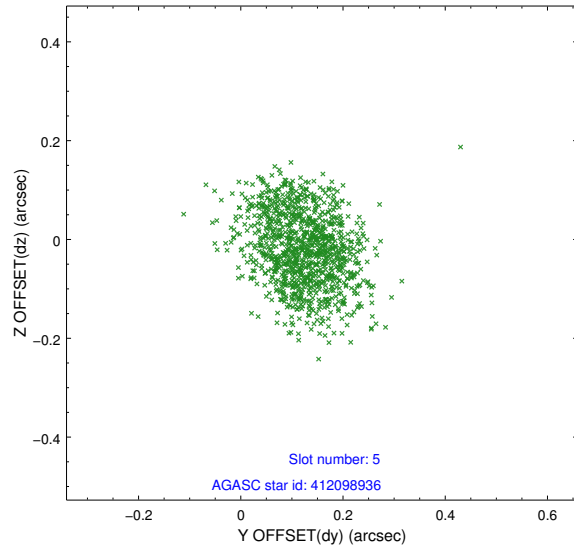
2.4.1 Slot 3



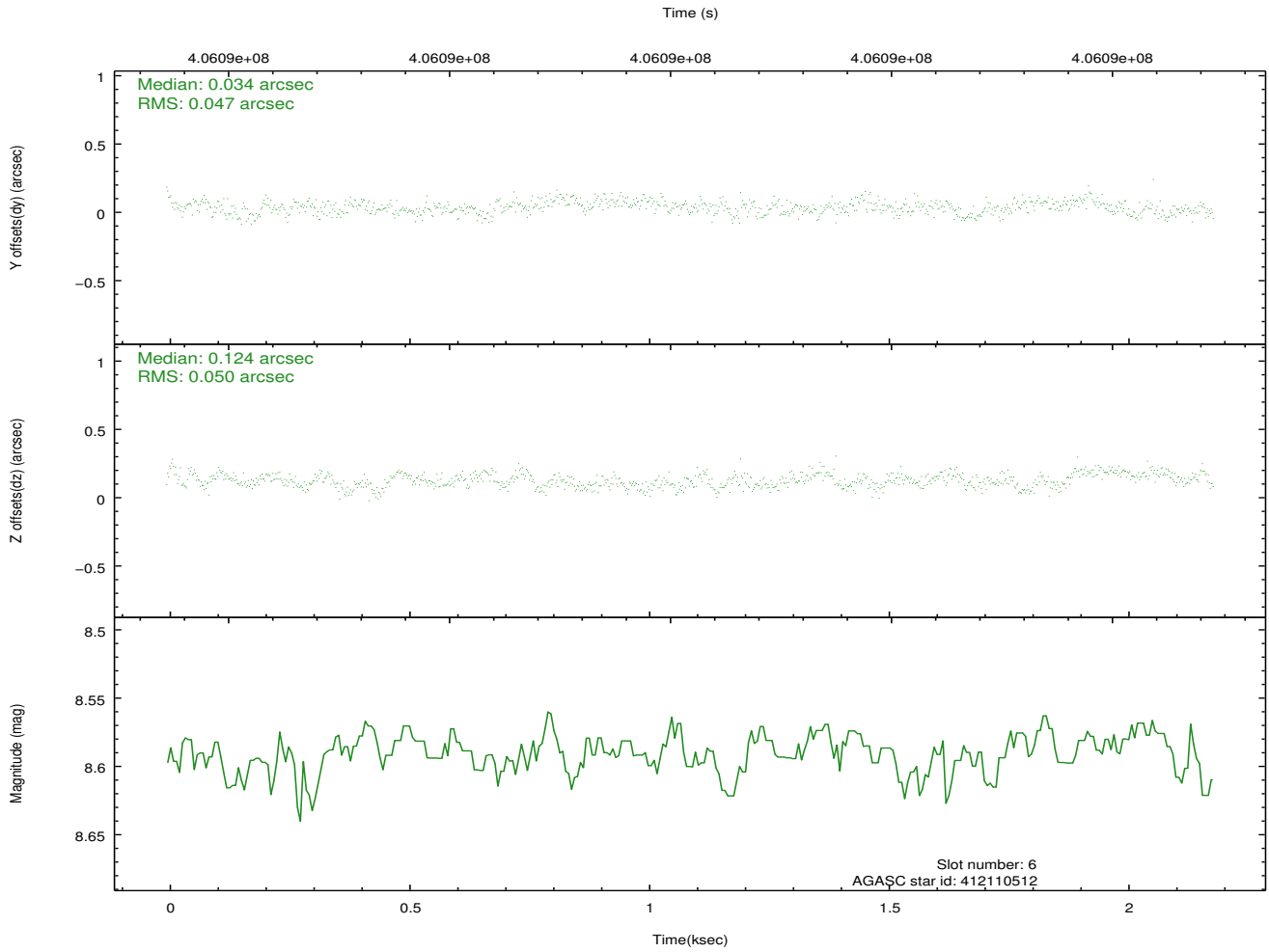
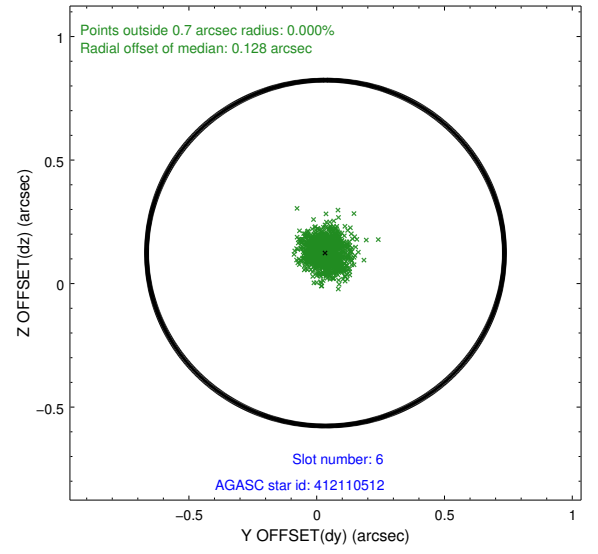
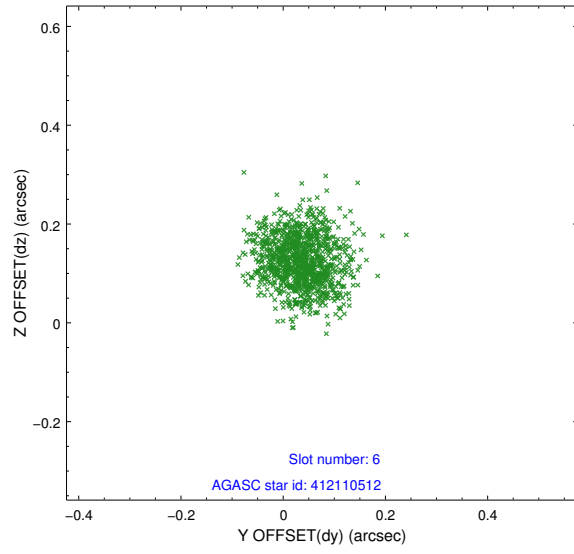
2.4.2 Slot 4



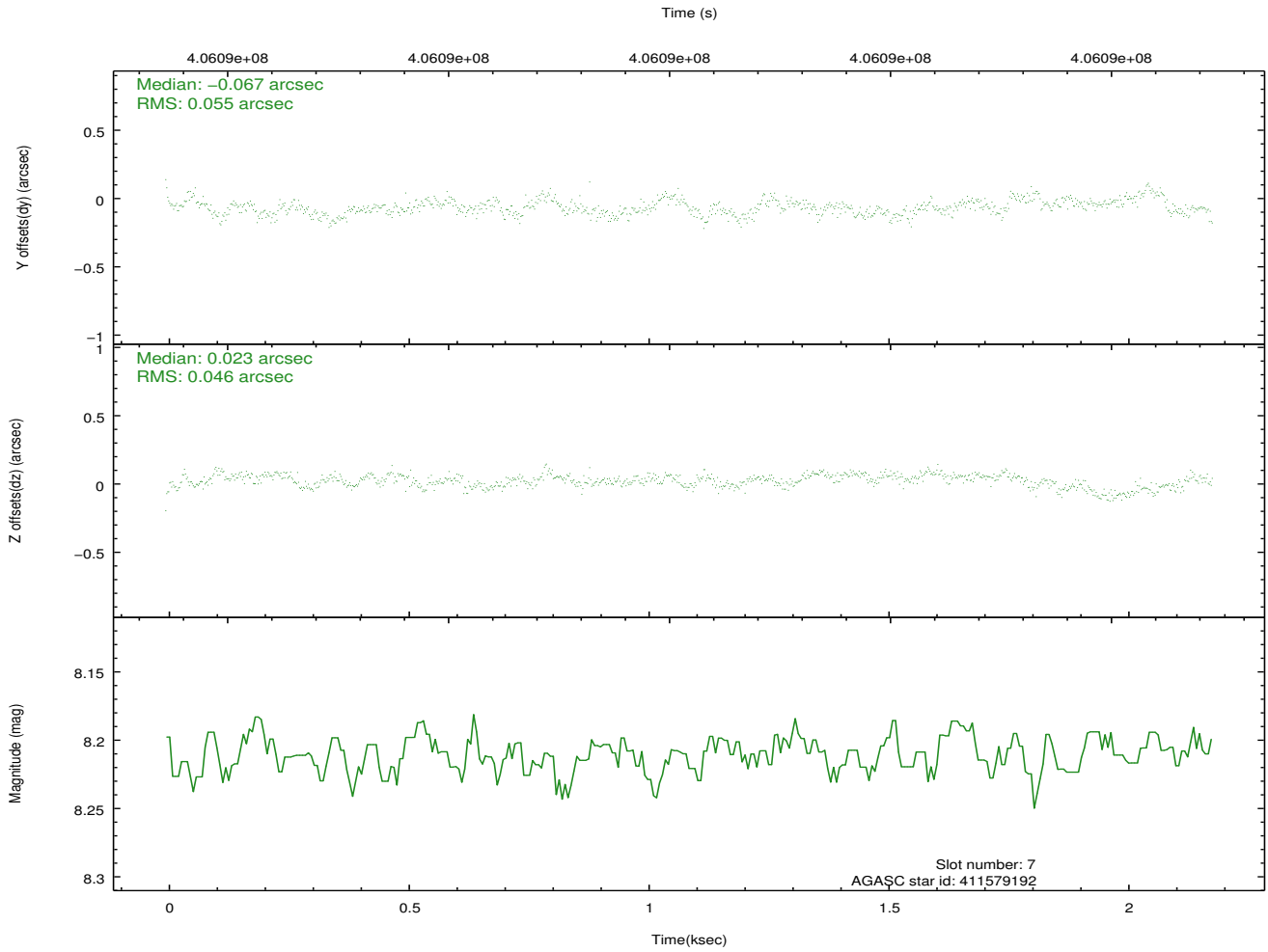
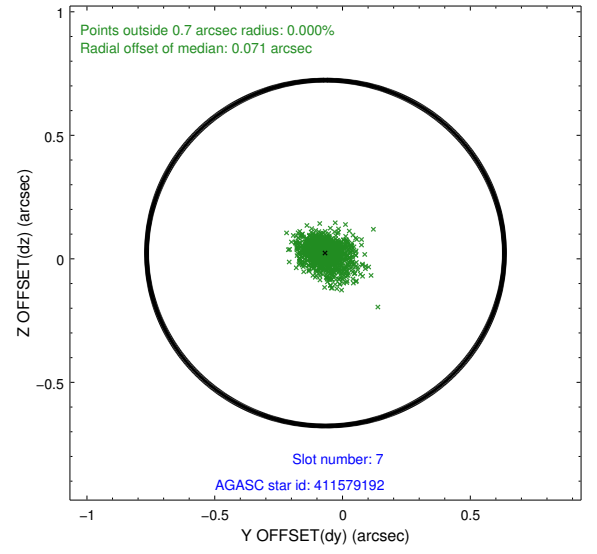
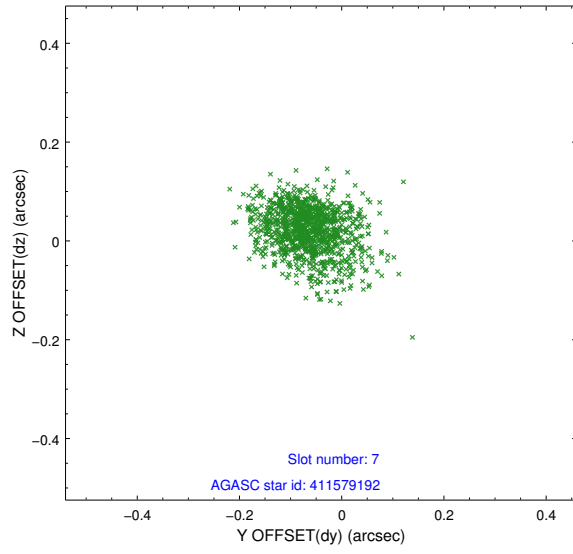
2.4.3 Slot 5



2.4.4 Slot 6

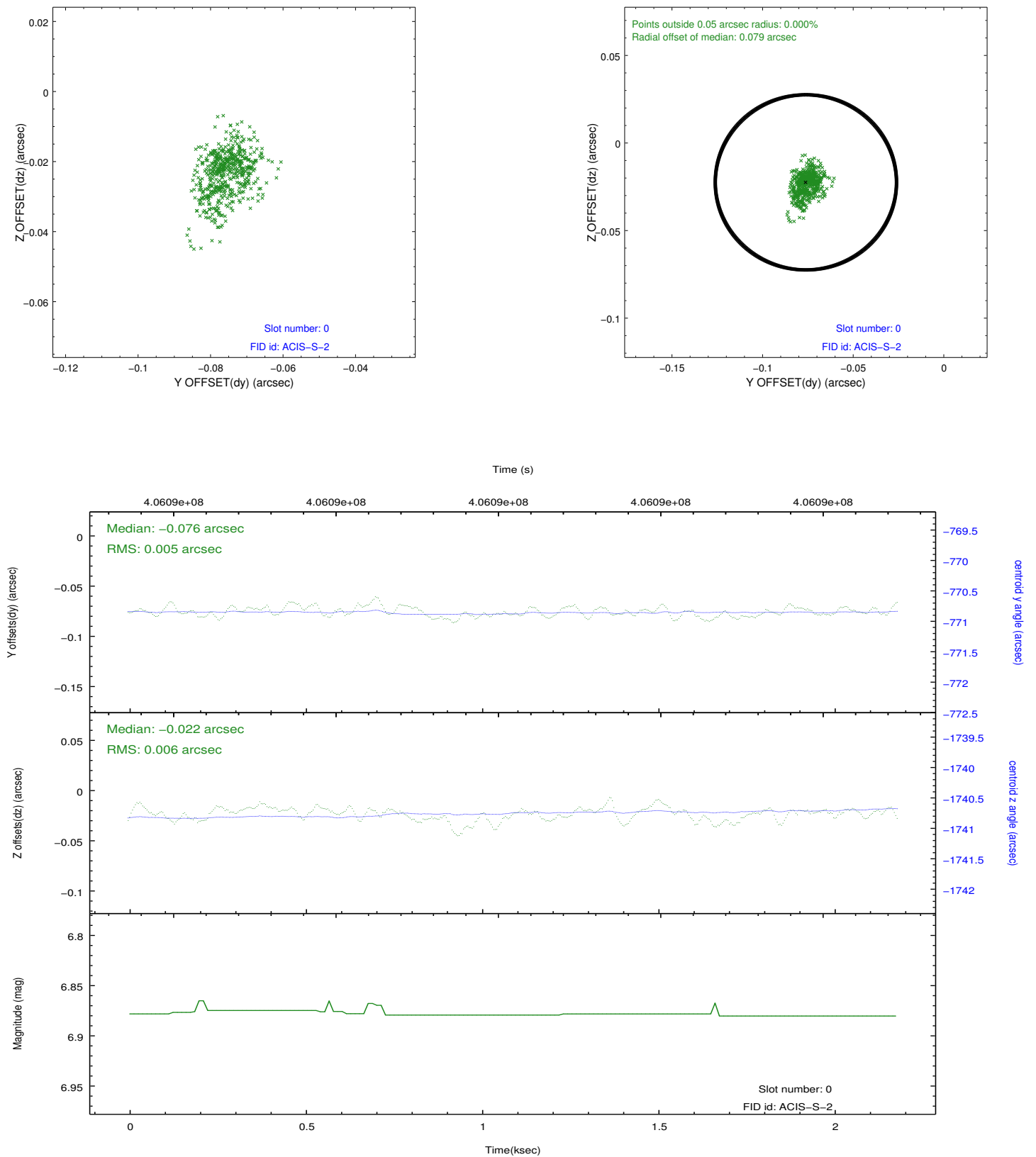


2.4.5 Slot 7

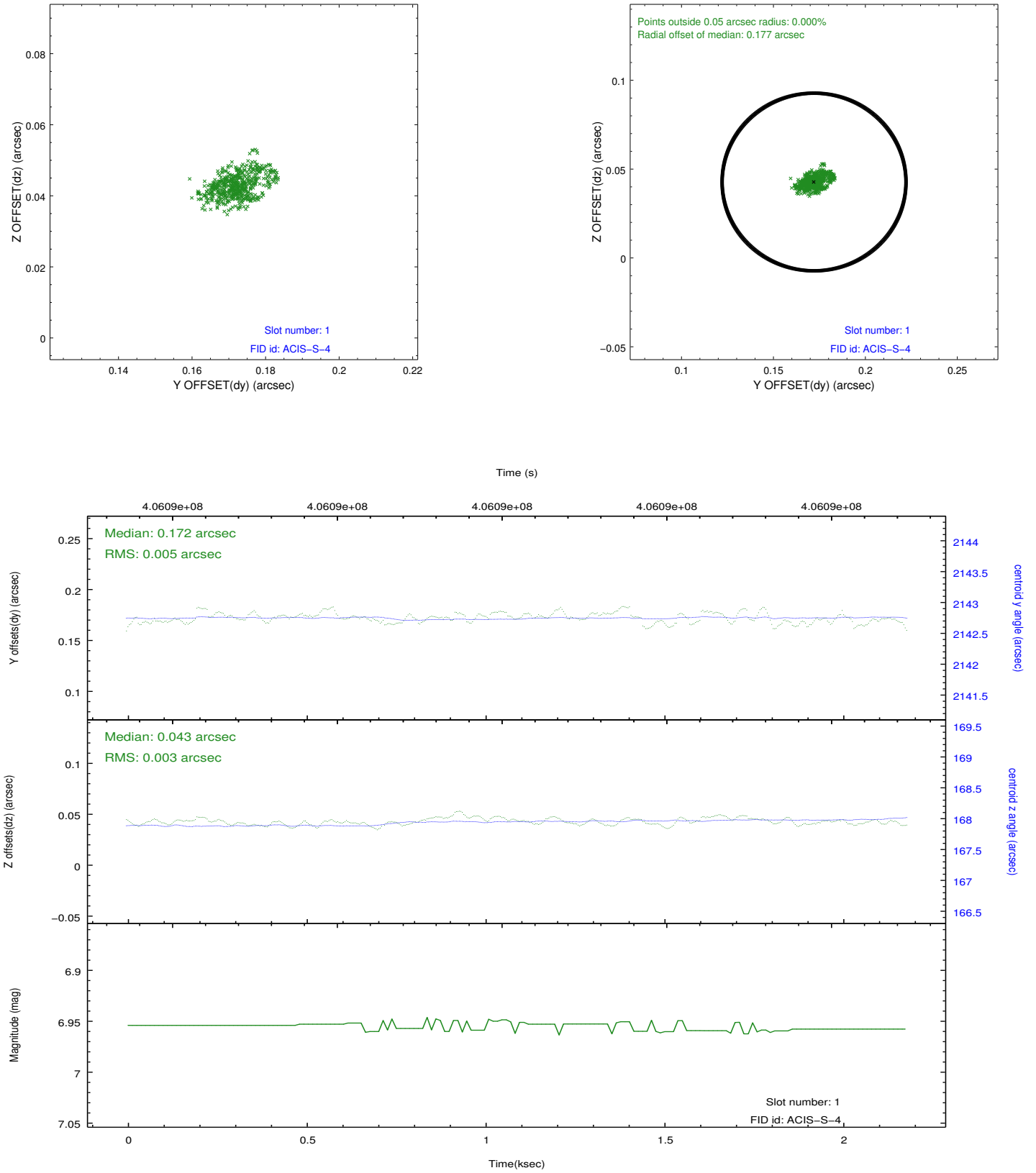


2.5 FID Slots

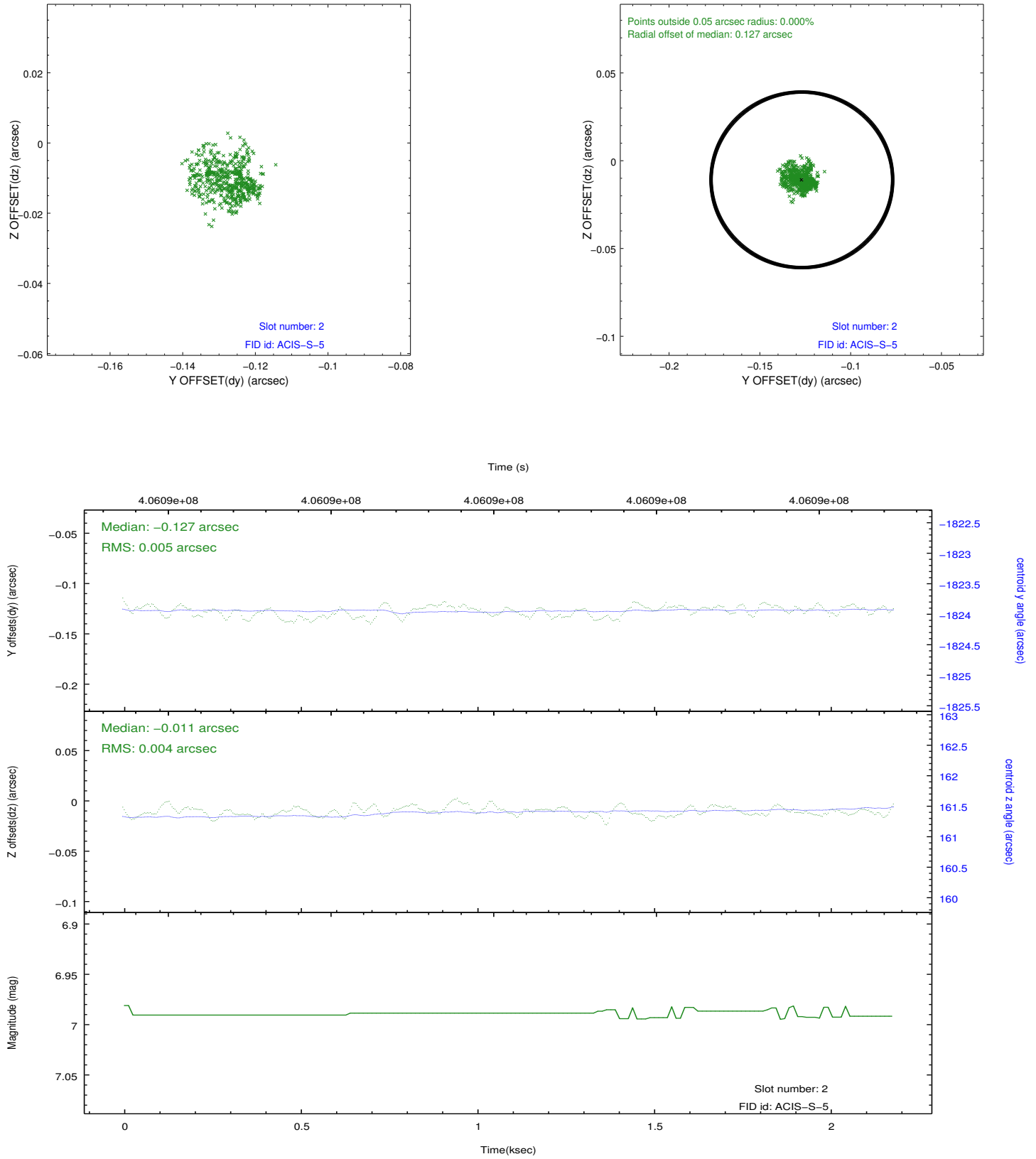
2.5.1 Slot 0



2.5.2 Slot 1



2.5.3 Slot 2



A Summary

A.1 Status

V&V Scientist	Beth Sundheim
V&V Date (YYYY-MM-DD)	2012.07.16
V&V Edition	1
V&V Disposition and Status	OK
V&V Charge Time	2.0977000454664

A.2 Comments