

V&V Reference Report

L2 ASCDS Version : 8.4.5

Observation 13163 - L2 Version 2
Chandra X-Ray Center

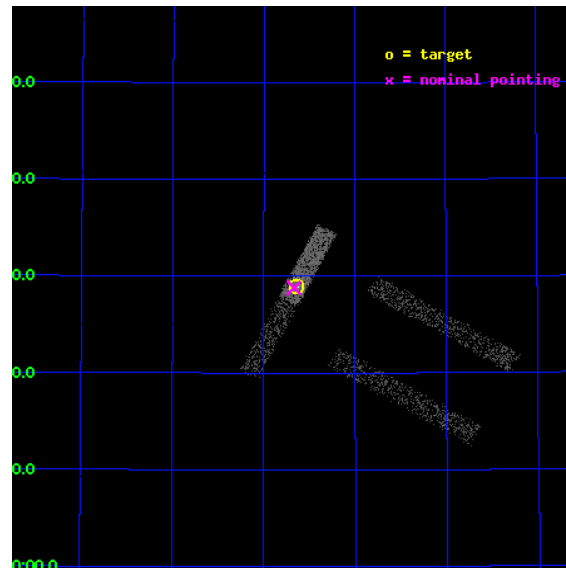
L2 Processing Date : Jul 6 2012

Contents

1	Front	2
2	OBI	3
2.1	OBI	3
2.1.1	Images	3
2.1.2	Bias	3
2.1.3	Parameters	4
2.1.4	Events	4
2.2	Compared Parameters	5
2.3	Aspect	6
2.4	Star Slots	9
2.4.1	Slot 3	9
2.4.2	Slot 4	10
2.4.3	Slot 5	11
2.4.4	Slot 6	12
2.4.5	Slot 7	13
2.5	FID Slots	14
2.5.1	Slot 0	14
2.5.2	Slot 1	15
2.5.3	Slot 2	16
A	Summary	17
A.1	Status	17
A.2	Comments	17

1 Front

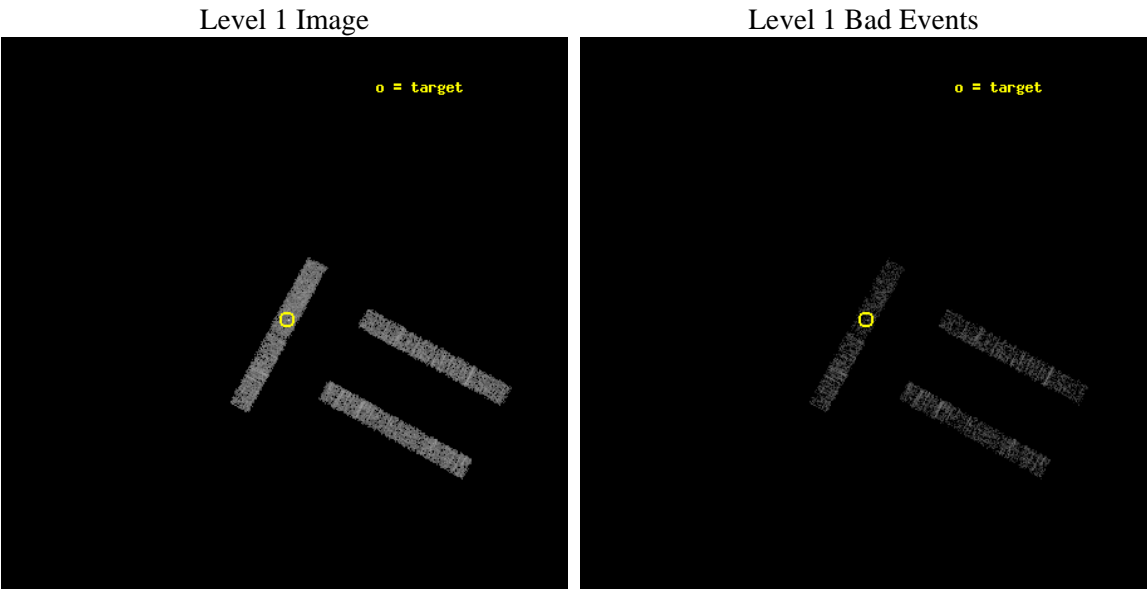
seq_num	401283	Sequence number
obs_id	13163	Observation id
title	Confirming the low-mass X-ray binaries in the Kepler field	Proposa
observer	Dr Jifeng Liu	Principal investigator
object	J191438.6+502857	Source name
dtcycle	0	
cycle	P	events from which exps? Prim/Second/Both
ra_targ	288.660833	Observer's specified target RA [deg]
dec_targ	50.4825	Observer's specified target Dec [deg]
ra_nom	288.66737215987	Nominal RA [deg]
dec_nom	50.480152948143	Nominal Dec [deg]
roll_nom	298.63557425009	Nominal Roll [deg]
revision	2	Processing version of data
ontime	2097.5862104893	Sum of GTIs [s]
livetime	2022.1419332698	Livetime [s]
ontime0	2097.6272504926	Sum of GTIs [s]
ontime1	2097.4220504761	Sum of GTIs [s]
ontime2	2097.4630904794	Sum of GTIs [s]
ontime3	2097.5041304827	Sum of GTIs [s]
ontime6	2097.545170486	Sum of GTIs [s]
ontime7	2097.5862104893	Sum of GTIs [s]
l2events	5049	Number of level 2 events



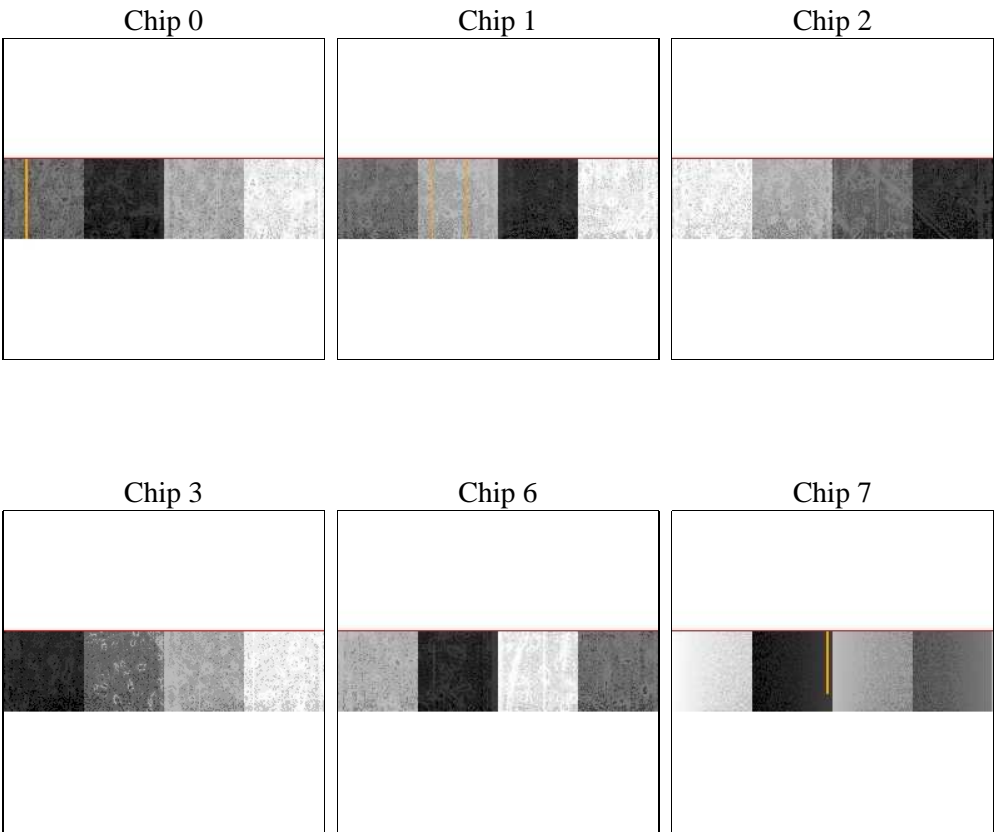
2 OBI

2.1 OBI

2.1.1 Images



2.1.2 Bias



Chip 3



Chip 6



Chip 7



2.1.3 Parameters

obi_num	0	Obi number	sched_exp_time	2000.000000	[s] Scheduled observation exposure time
ascdsver	8.4.5	Processing system revision	ontime	2097.5862104893	Sum of GTIs [s]
caldsver	4.5.0	 	ontime0	2097.6272504926	Sum of GTIs [s]
date	2012-07-06T12:30:10	Date and time of file creation	ontime1	2097.4220504761	Sum of GTIs [s]
revision	2	Processing version of data	ontime2	2097.4630904794	Sum of GTIs [s]
			ontime3	2097.5041304827	Sum of GTIs [s]
			ontime6	2097.545170486	Sum of GTIs [s]
			ontime7	2097.5862104893	Sum of GTIs [s]
			l1events	26915	Number of level 1 events

2.1.4 Events

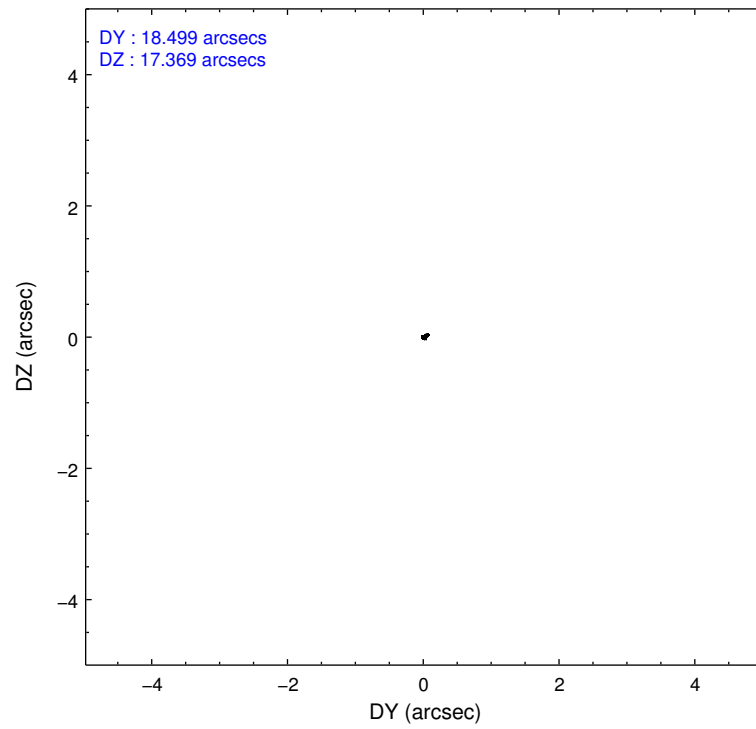
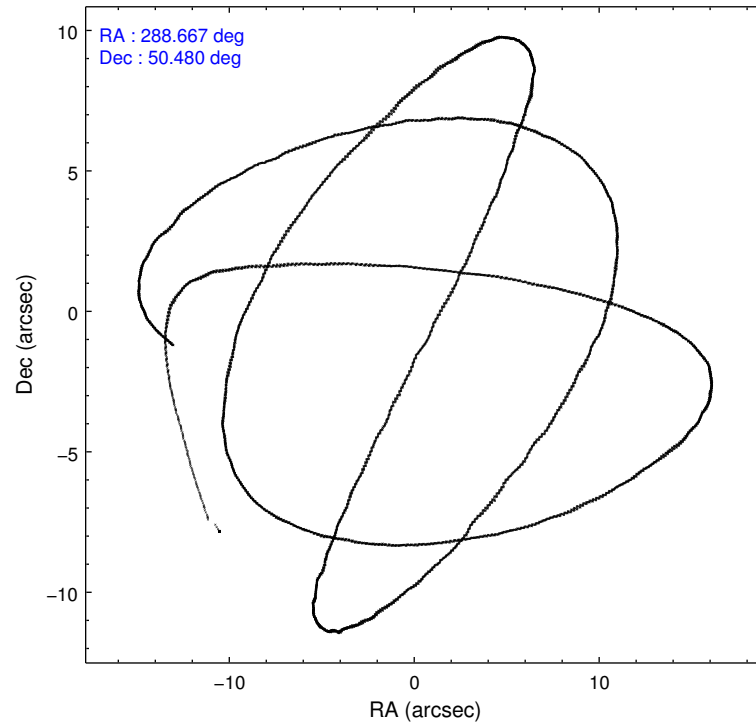
	ccd 0	ccd 1	ccd 2	ccd 3	ccd 6	ccd 7
level 1 events	4067	4039	4518	3961	4728	5602
rejected events	3538	3492	4041	3447	4186	2594
rejected %	86%	86%	89%	87%	88%	46%

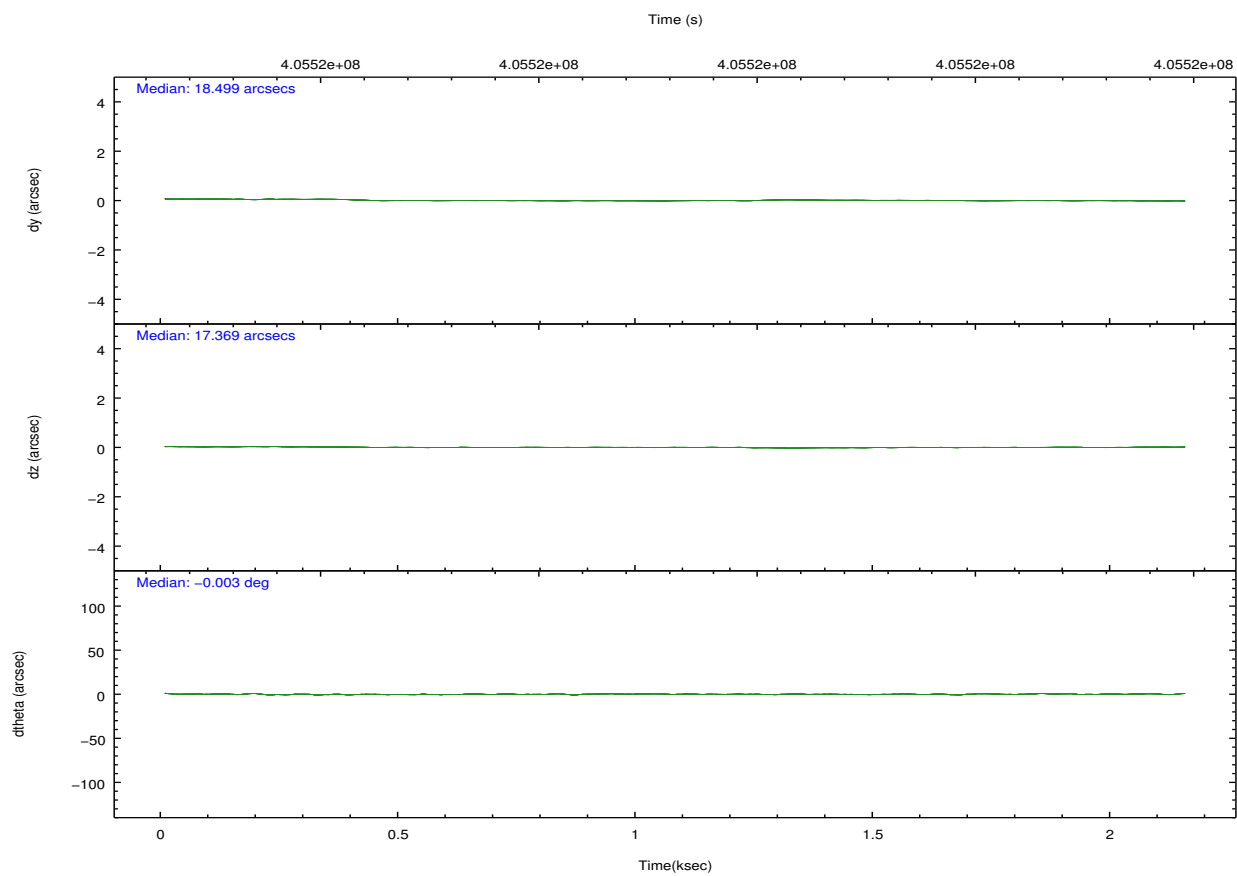
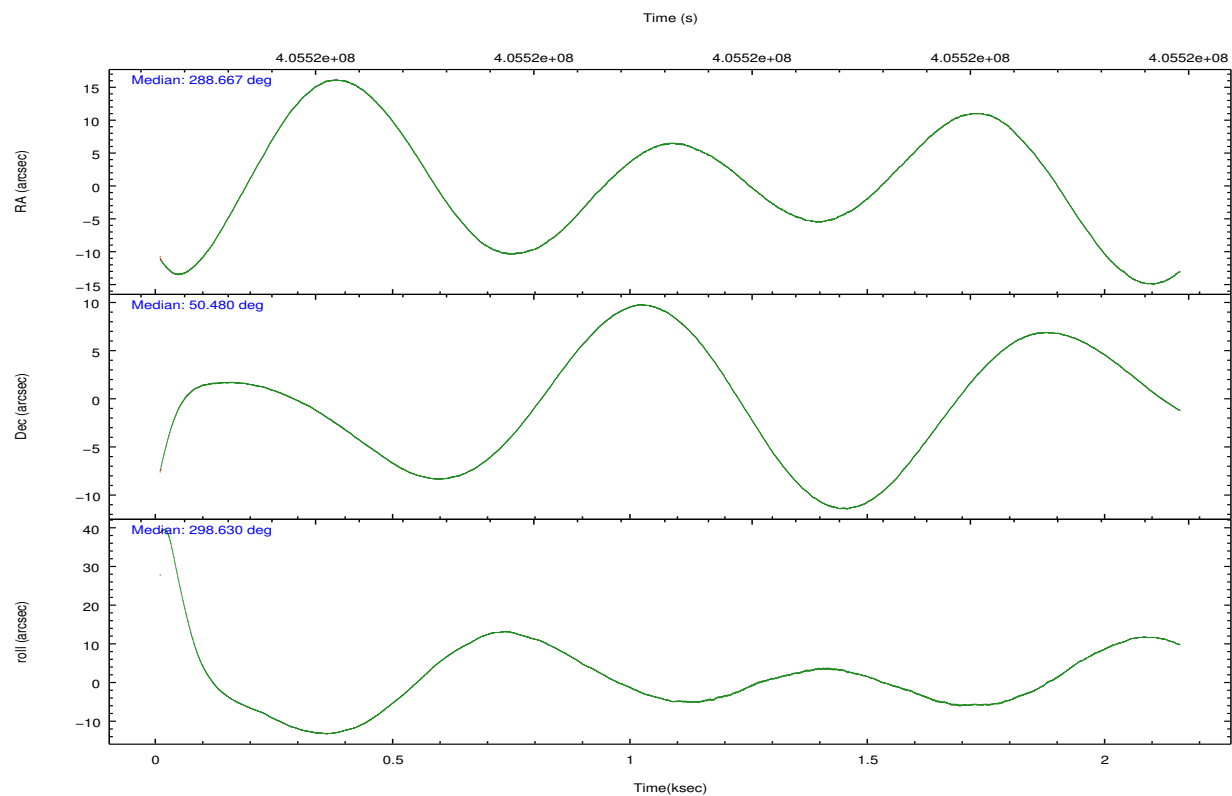
	ccd 0	ccd 1	ccd 2	ccd 3	ccd 6	ccd 7
grade 0 events	161	168	140	158	182	408
	3%	4%	3%	3%	3%	7%
grade 1 events	1	1	2	5	2	18
	0%	0%	0%	0%	0%	0%
grade 2 events	121	125	99	92	101	650
	2%	3%	2%	2%	2%	11%
grade 3 events	85	74	87	83	75	314
	2%	1%	1%	2%	1%	5%
grade 4 events	77	84	74	76	76	329
	1%	2%	1%	1%	1%	5%
grade 5 events	173	153	152	169	168	529
	4%	3%	3%	4%	3%	9%
grade 6 events	85	96	77	106	109	1311
	2%	2%	1%	2%	2%	23%
grade 7 events	3364	3338	3887	3272	4015	2043
	82%	82%	86%	82%	84%	36%

2.2 Compared Parameters

Parameter	Planned	Actual	Parameter	Planned	Actual
Instrument	ACIS	ACIS	Obspar format version number	7	7
Detector	ACIS-012367	ACIS-012367	Obspar file type	PREDICTED	ACTUAL
Grating	NONE	NONE	Obspar update status	NONE	UPDATED
Data mode	FAINT	FAINT	Number of optional ACIS chips dropped	0	0
Observation mode	POINTING	POINTING	On-chip summing requested	N	N
[deg] Pointing RA	288.630455	288.667372159866	Subarray requested	CUSTOM	1/4
[deg] Pointing Dec	50.494005	50.48015294814347	Subarray start row	385	385
[deg] Pointing Roll	298.507185	298.6355742500871	Subarray row count	256	256
[mm] SIM focus pos	-0.684267	-0.6828225247311905	Alternating exposures requested	N	N
[mm] SIM defocus	0	0.001444936568705701	[s] Primary exposure time	0.000000	1.1
[mm] SIM translation stage pos	-190.132523	-190.1425803651734			
[mm] SIM translation stage offset	0	0.01005778216563158			
[s] Observation start time (MET)	405522400.184000	405521295.62992			
Observation start date	2010-11-07T13:05:34	2010-11-07T12:48:15			
[s] Observation end time (MET)	405524400.184000	405524661.21759			
Observation end date	2010-11-07T13:38:54	2010-11-07T13:44:21			
Read mode	TIMED	TIMED			

2.3 Aspect



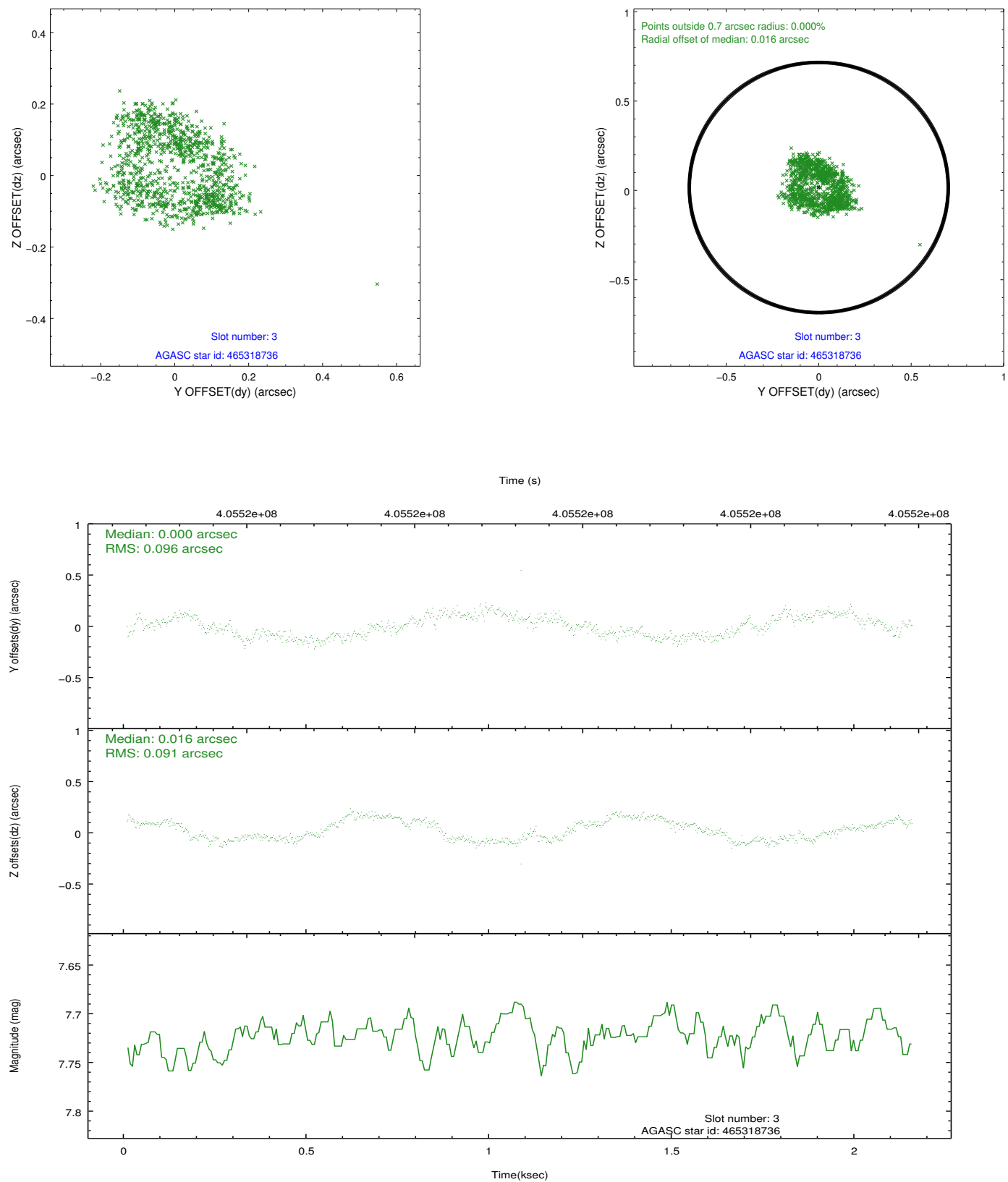


Slot Statistics

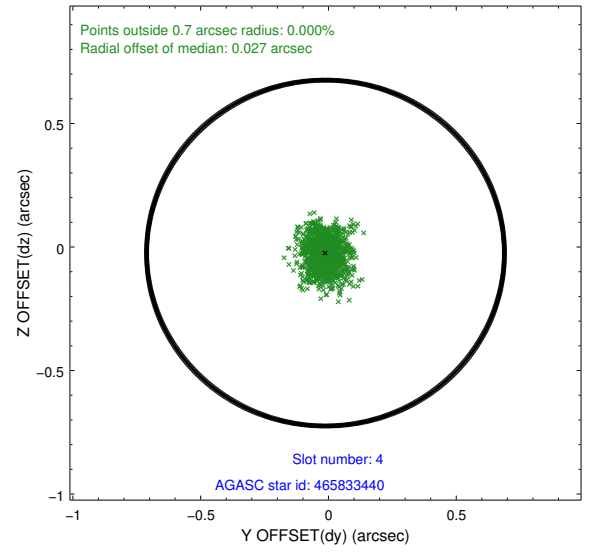
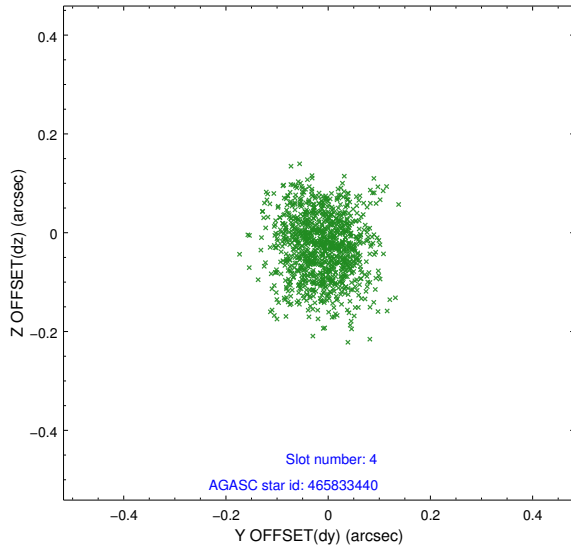
slot	status	id	mag	n_pts	med_dy	med_dz	dr1	dr2	ra	dec	mean_y	mean_z
0	FID	ACIS-S-2	6.93	525	-0.062	-0.032	0.006	0.011	0.000000	0.000000	-771.68	-1738.77
1	FID	ACIS-S-4	7.00	525	0.201	0.038	0.006	0.012	0.000000	0.000000	2140.51	166.56
2	FID	ACIS-S-5	7.04	524	-0.170	0.002	0.007	0.012	0.000000	0.000000	-1820.70	163.74
3	GUIDE	465318736	7.72	1049	0.000	0.016	0.143	0.195	288.552482	49.767632	2211.98	-1406.83
4	GUIDE	465833440	9.00	1048	-0.012	-0.024	0.085	0.142	289.197272	50.790163	-322.95	1643.48
5	GUIDE	465834104	9.00	1049	-0.011	0.078	0.194	0.276	287.705039	50.720052	-1732.56	-1457.41
6	GUIDE	465834440	8.57	1046	0.078	-0.074	0.071	0.108	288.966465	50.799710	-604.73	1196.52
7	GUIDE	465311176	9.16	1041	-0.059	0.009	0.084	0.143	289.523975	50.196884	1911.79	1306.34

2.4 Star Slots

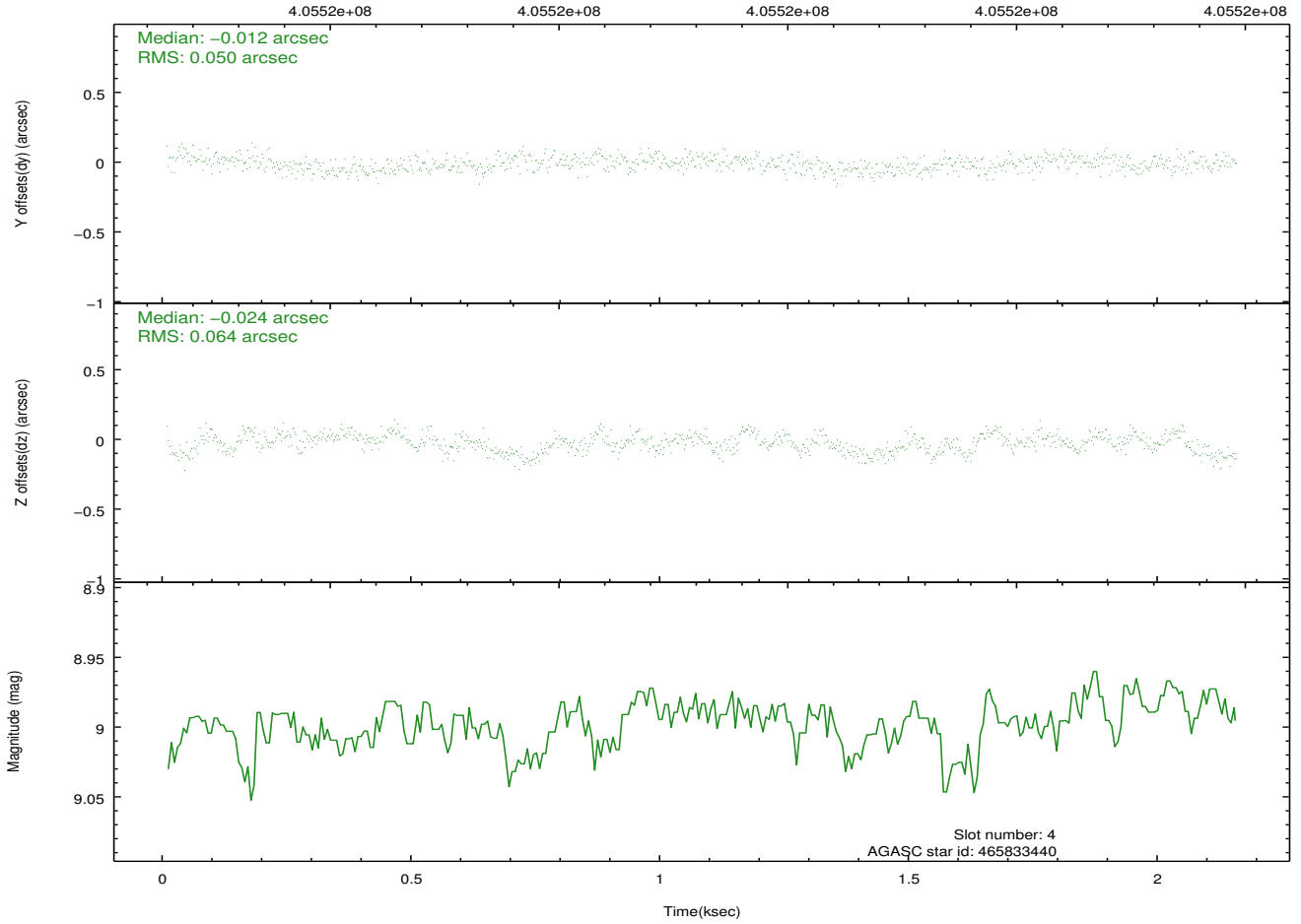
2.4.1 Slot 3



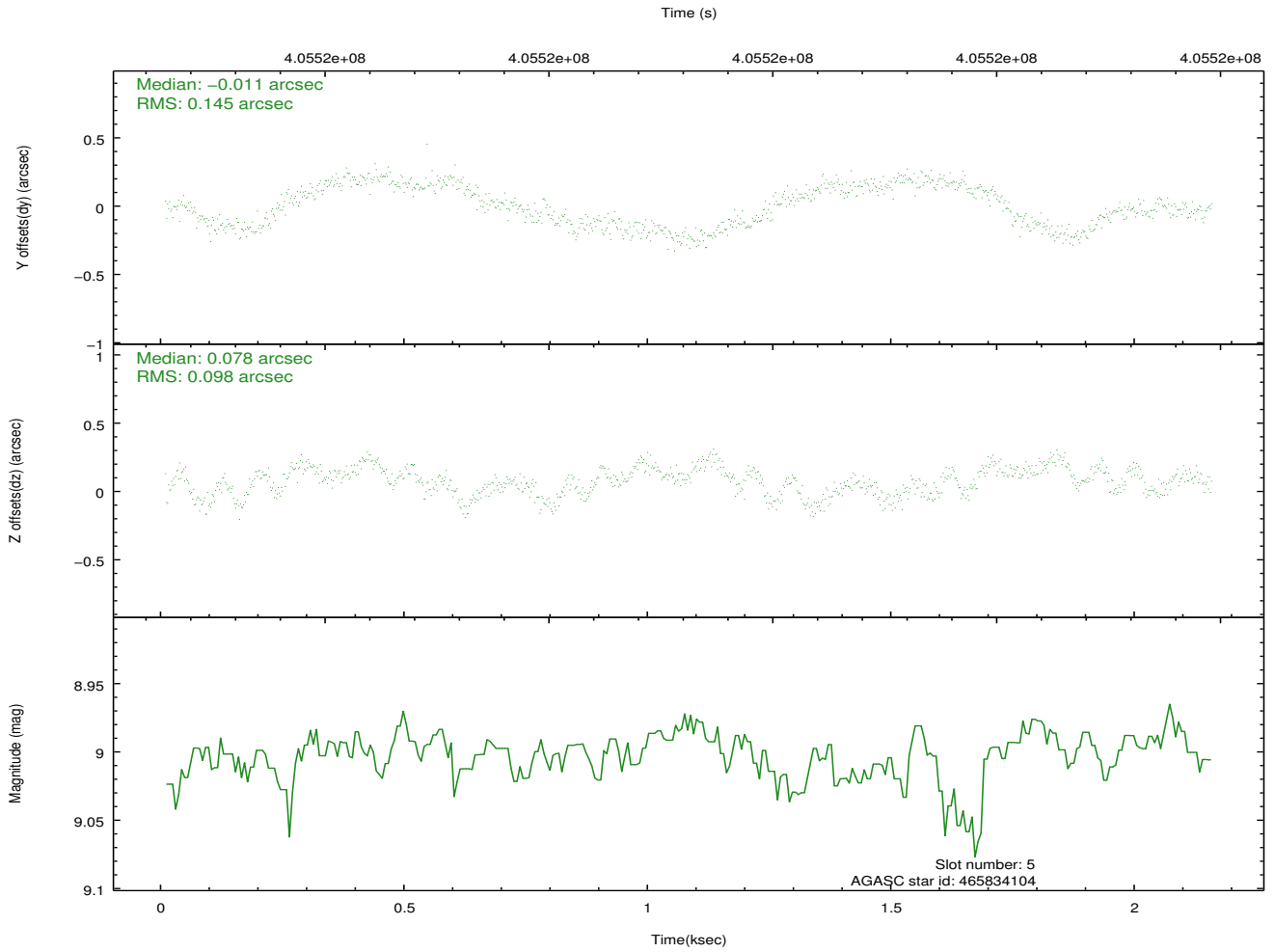
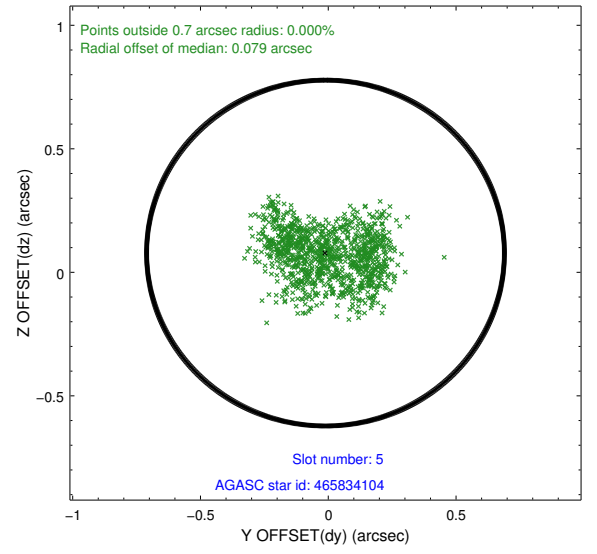
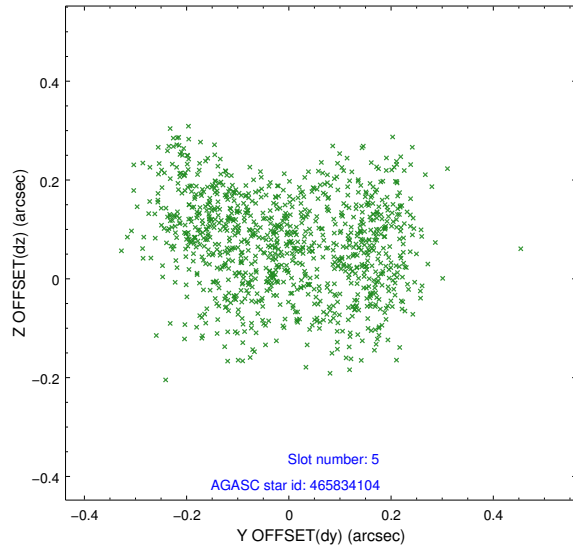
2.4.2 Slot 4



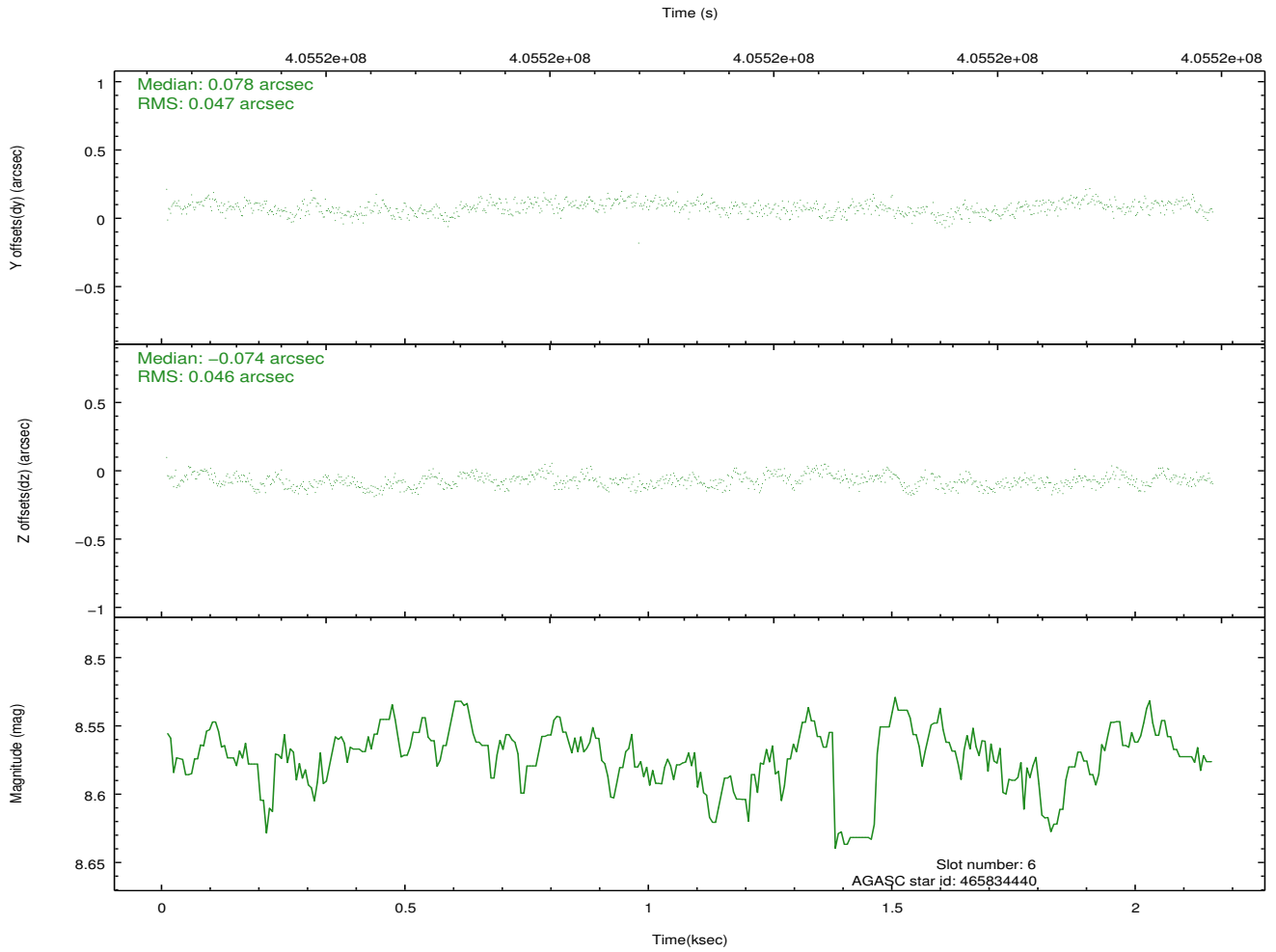
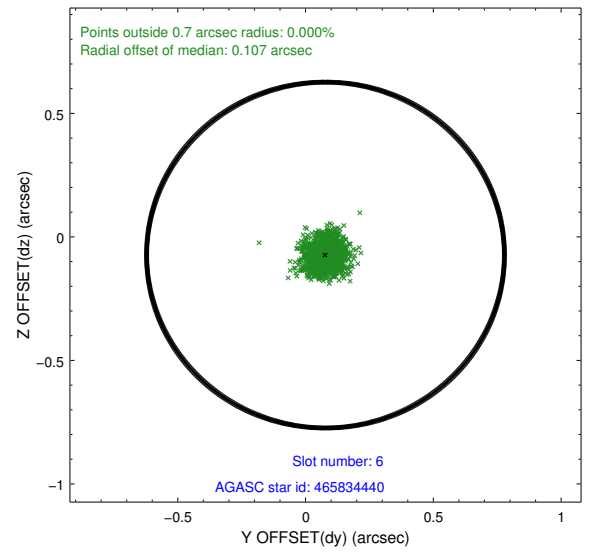
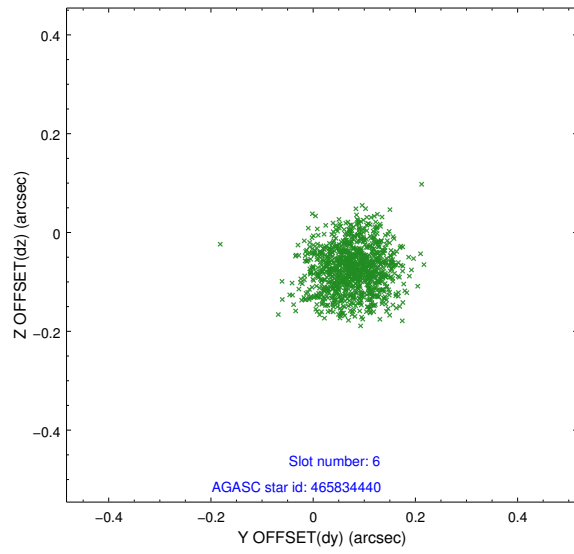
Time (s)



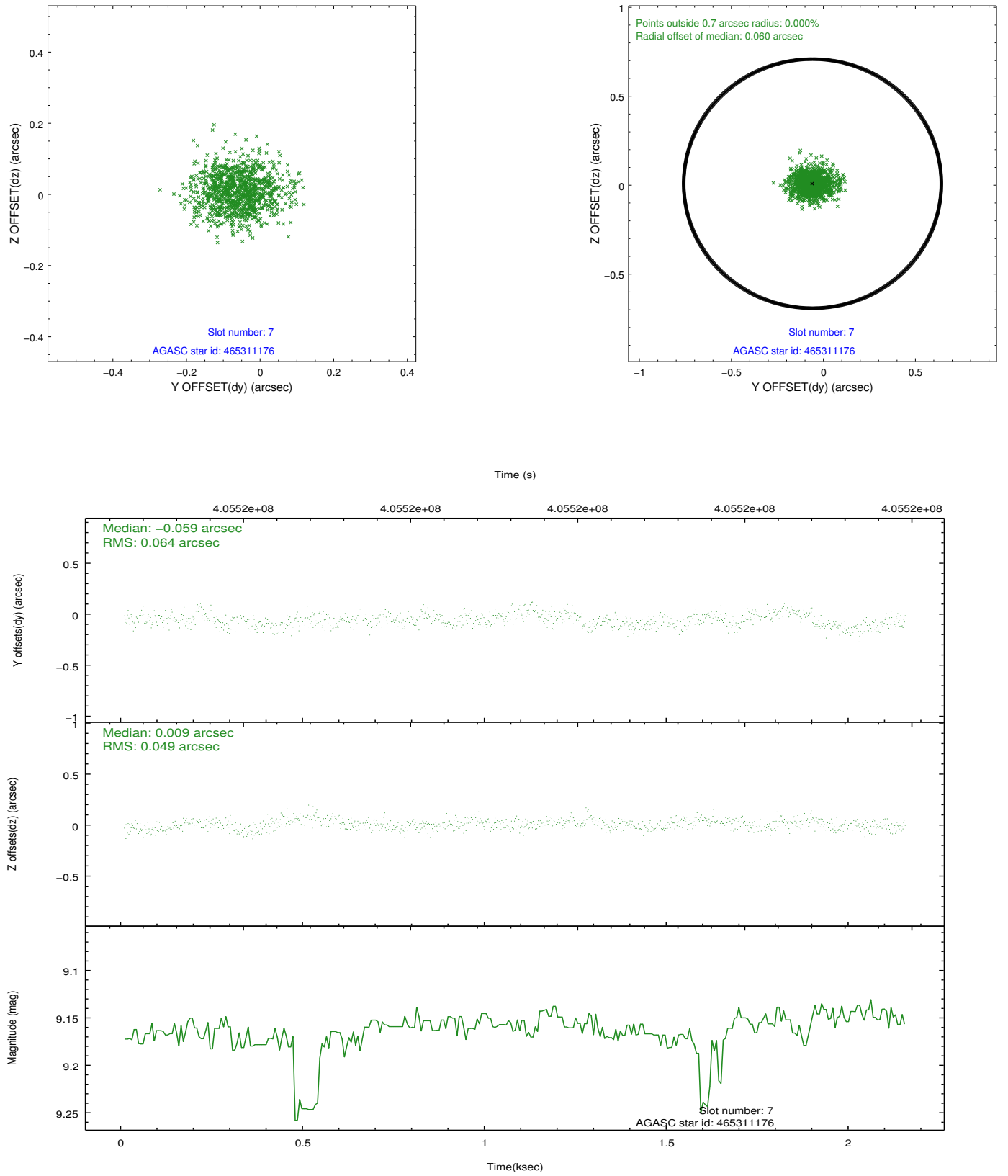
2.4.3 Slot 5



2.4.4 Slot 6

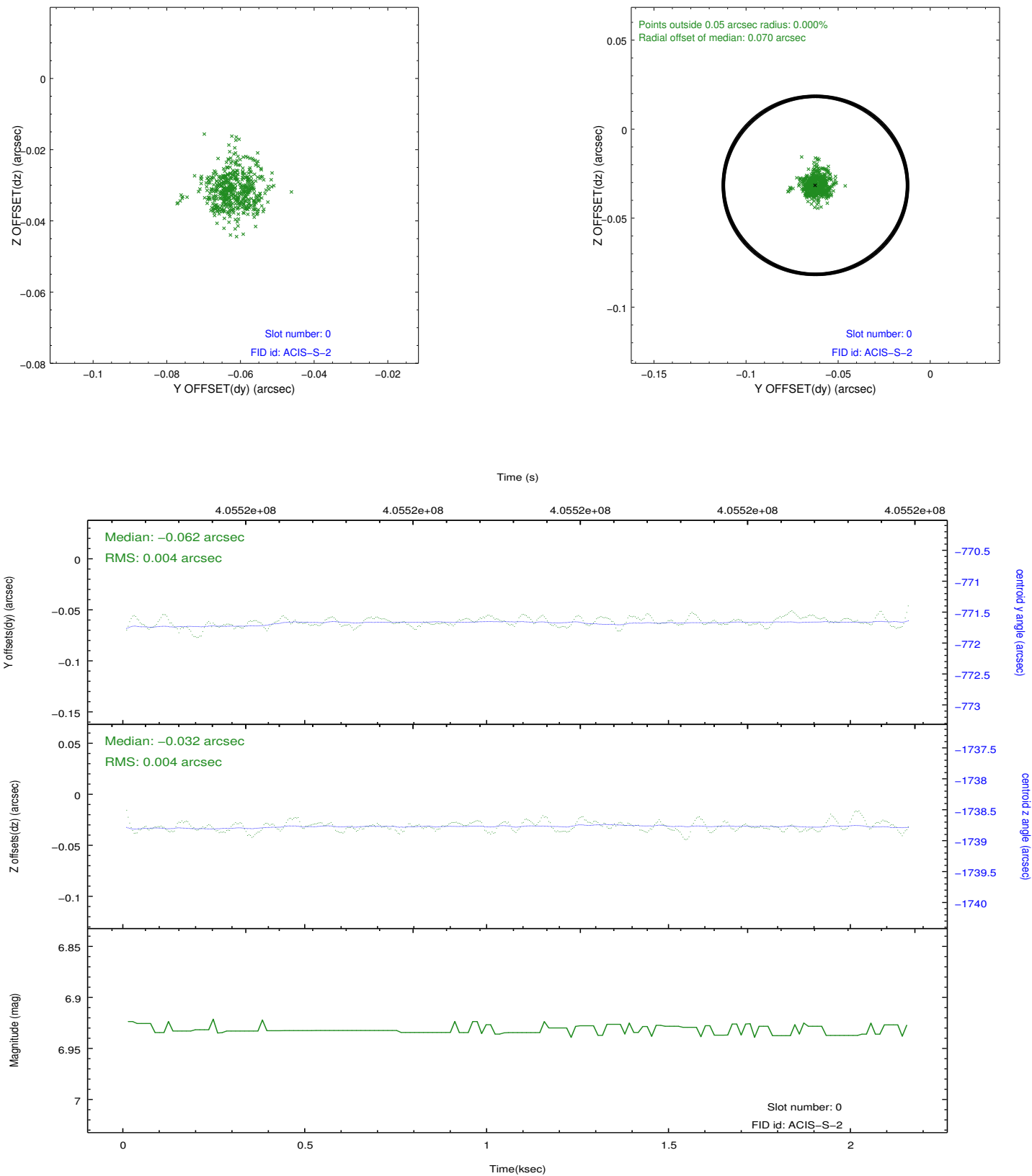


2.4.5 Slot 7

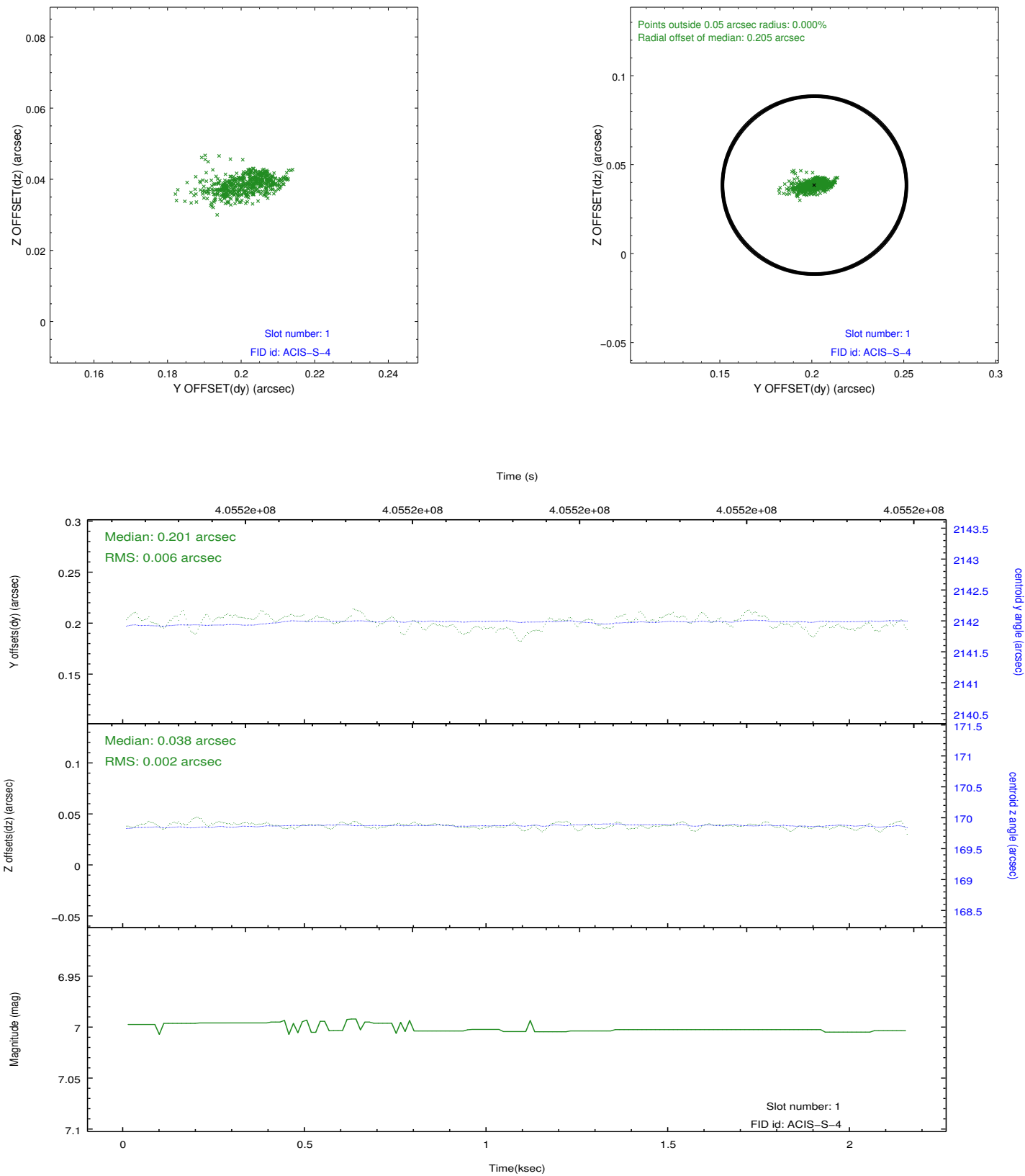


2.5 FID Slots

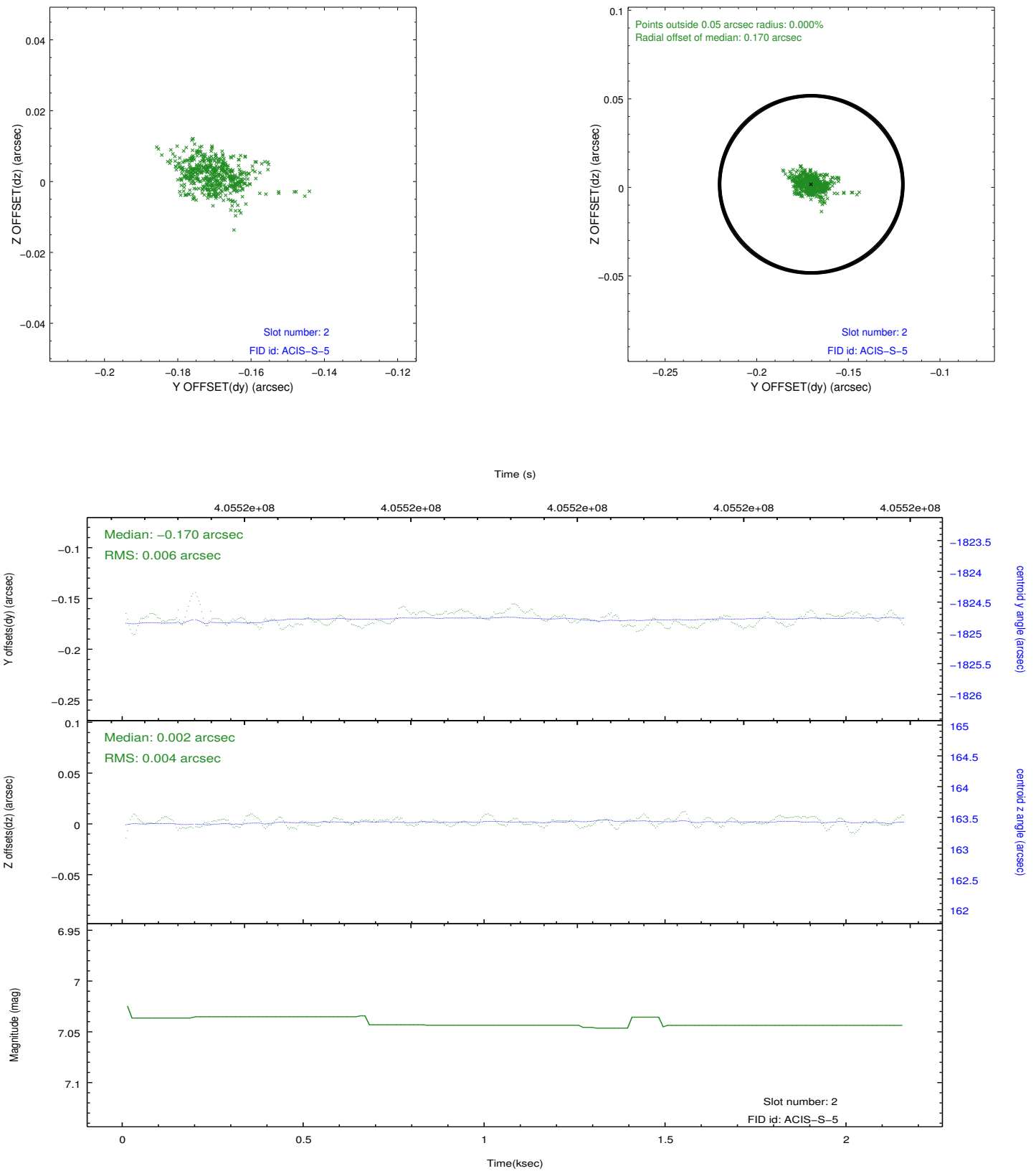
2.5.1 Slot 0



2.5.2 Slot 1



2.5.3 Slot 2



A Summary

A.1 Status

V&V Scientist	Jen Lauer
V&V Date (YYYY-MM-DD)	2012.07.16
V&V Edition	1
V&V Disposition and Status	OK
V&V Charge Time	2.0975862042308

A.2 Comments