

V&V Reference Report

L2 ASCDS Version : 8.4.3

Observation 12504 - L2 Version 3
Chandra X-Ray Center

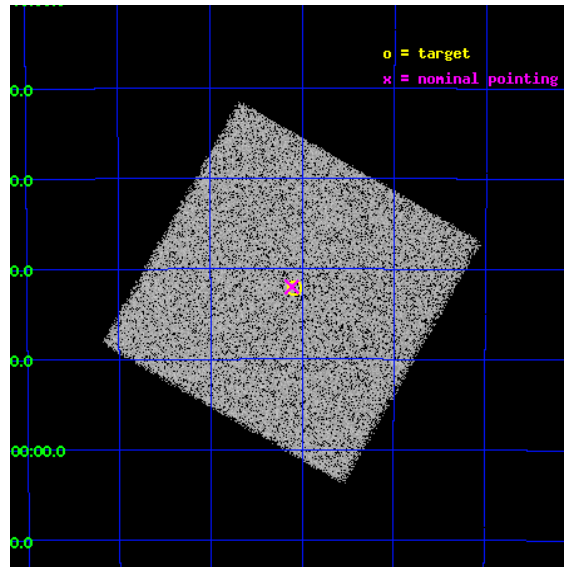
L2 Processing Date : Jul 27 2012

Contents

1	Front	2
2	OBI	3
2.1	OBI	3
2.1.1	Images	3
2.1.2	Parameters	4
2.1.3	Events	4
2.2	Compared Parameters	5
2.3	Aspect	6
2.4	Star Slots	9
2.4.1	Slot 3	9
2.4.2	Slot 4	10
2.4.3	Slot 5	11
2.4.4	Slot 6	12
2.4.5	Slot 7	13
2.5	FID Slots	14
2.5.1	Slot 0	14
2.5.2	Slot 1	15
2.5.3	Slot 2	16
A	Summary	17
A.1	Status	17
A.2	Comments	17

1 Front

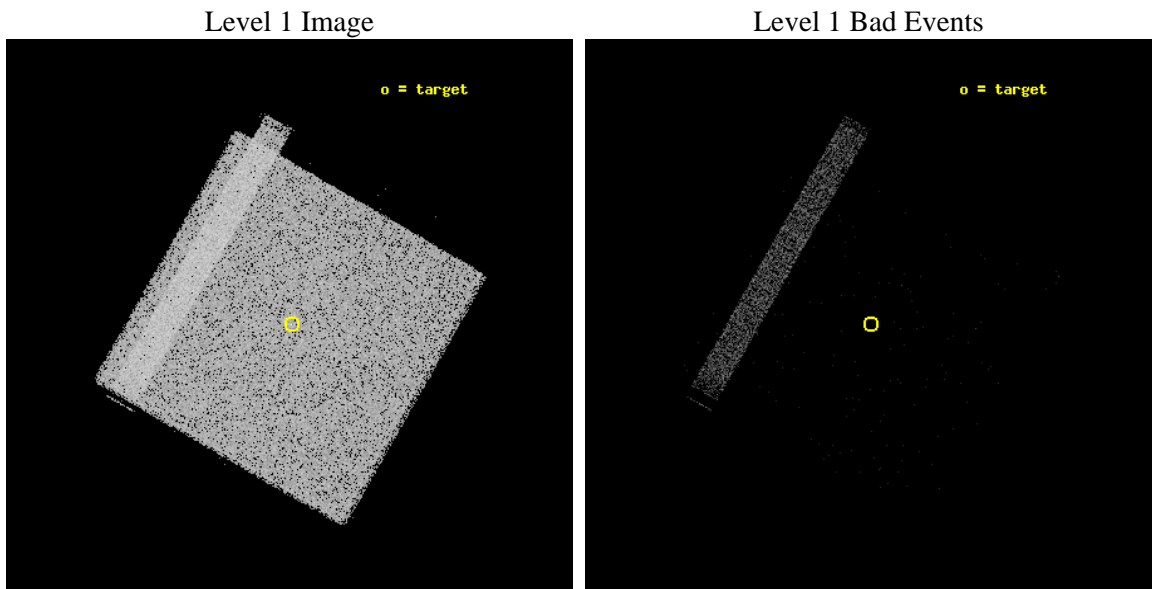
seq_num	401245	Sequence number
obs_id	12504	Observation id
title	Refining the positions of soft gamma-ray sources with Chandra	Prop
observer	Dr. Arash Bodaghee	Principal investigator
object	IGR J16393-4643	Source name
ra_targ	249.7725	Observer's specified target RA [deg]
dec_targ	-46.703333	Observer's specified target Dec [deg]
ra_nom	249.77784718864	Nominal RA [deg]
dec_nom	-46.700014424984	Nominal Dec [deg]
roll_nom	74.908088389534	Nominal Roll [deg]
revision	3	Processing version of data
ontime	1137.750058949	[s]
livetime	1125.1730014918	Ontime multiplied by DTCOR
l2events	89061	Number of level 2 events



2 OBI

2.1 OBI

2.1.1 Images



2.1.2 Parameters

obi_num	0	Obi number	sched_exp_time	1000.000000	[s] Scheduled observation exposure time
ascdsver	8.4.5	Processing system revision	ontime	1137.750058949	[s]
caldbver	4.5.1	 	l1events	235740	Number of level 1 events
date	2012-07-27T21:29:56	Date and time of file creation			
revision	3	Processing version of data			

2.1.3 Events

Level 1 Events

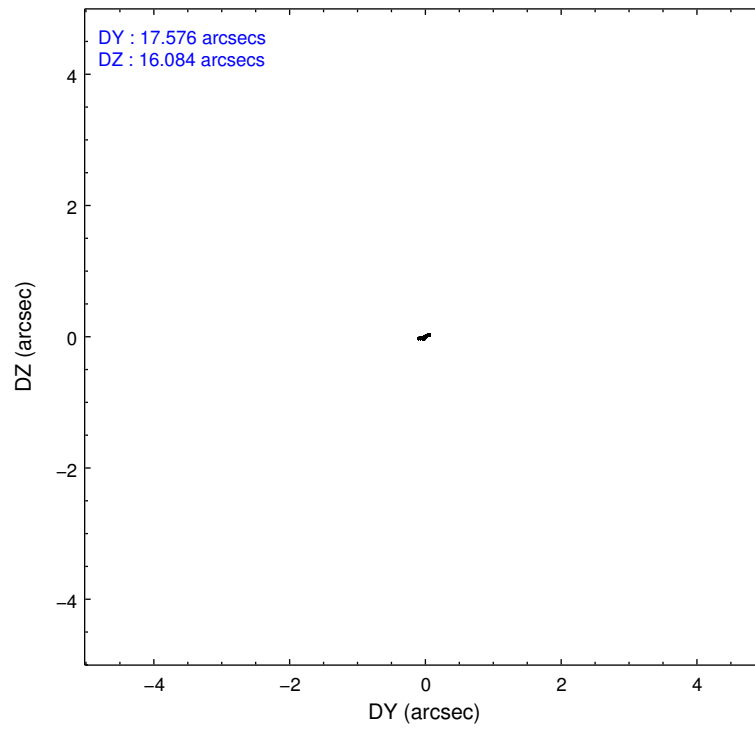
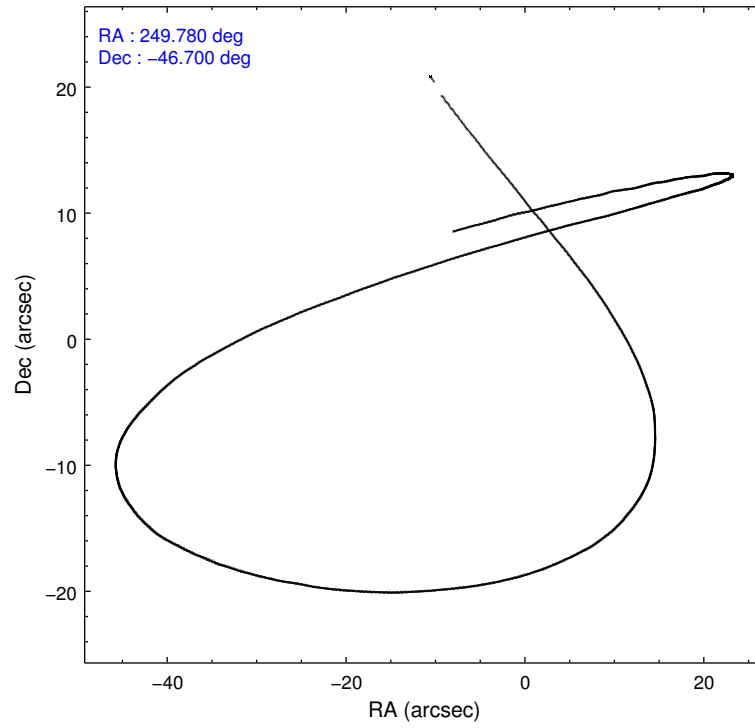
	segment 0
level 1 events	235740
rejected events	111474
rejected %	47%

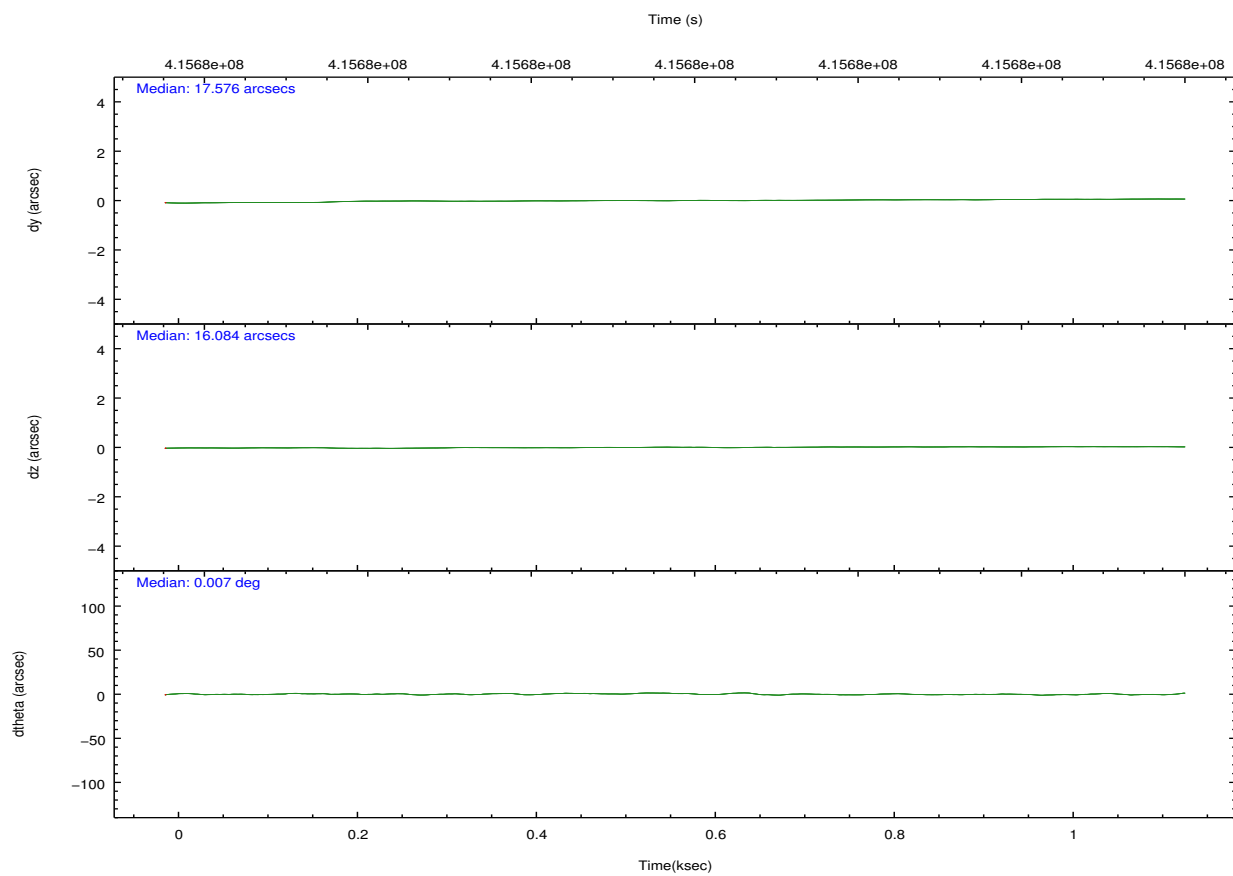
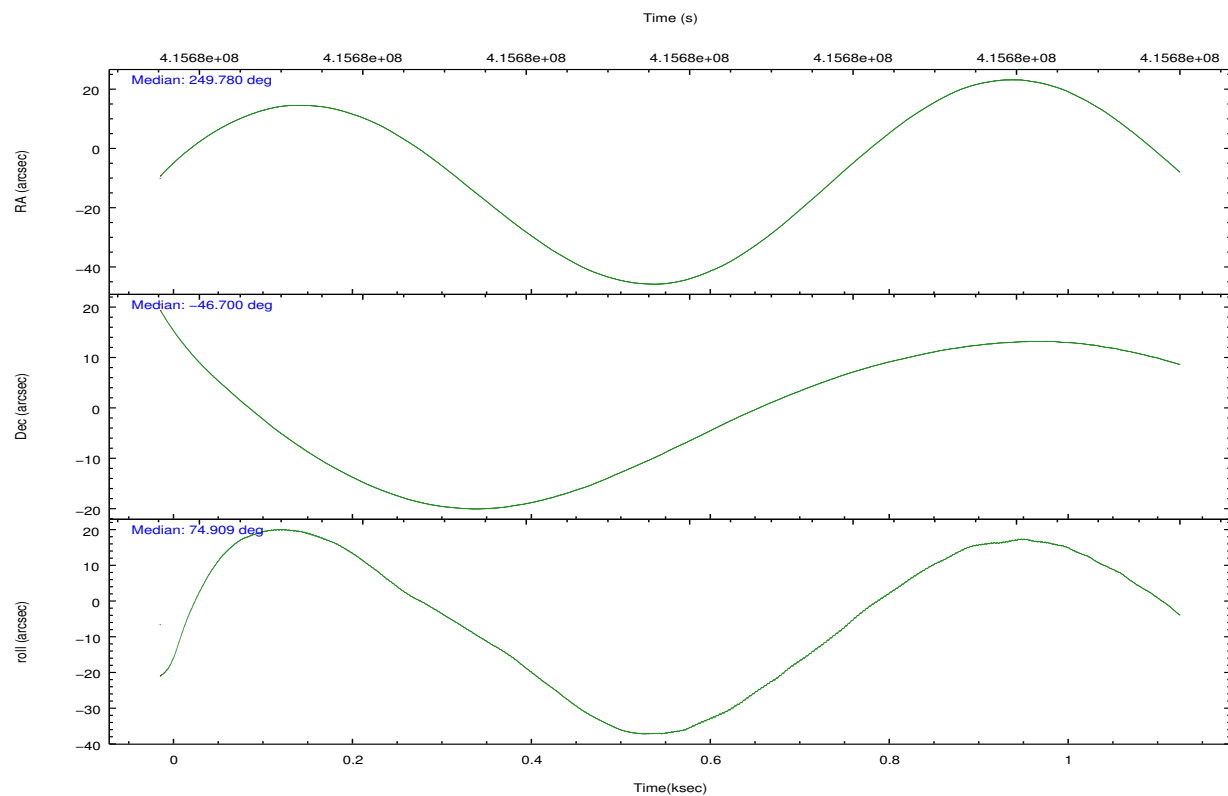
2.2 Compared Parameters

Parameter	Planned	Actual
Instrument	HRC	HRC
Detector	HRC-I	HRC-I
Grating	NONE	NONE
Data mode	OBSERVING	OBSERVING
Observation mode	POINTING	POINTING
[deg] Pointing RA	249.787278	249.7778471886371
[deg] Pointing Dec	-46.726058	-46.70001442498403
[deg] Pointing Roll	75.010764	74.90808838953387
[mm] SIM focus pos	-1.040293	-1.038866356238299
[mm] SIM defocus	0	0.001426264420575141
[mm] SIM translation stage pos	126.985494	126.9829799899862
[mm] SIM translation stage offset	0	0.002508901615314585
[s] Observation start time (MET)	415682940.184000	415681931.01724
Observation start date	2011-03-05T03:27:54	2011-03-05T03:12:11
[s] Observation end time (MET)	415683940.184000	415684752.84239
Observation end date	2011-03-05T03:44:34	2011-03-05T03:59:12

Parameter	Planned	Actual
Obspar format version number	7	7
Obspar file type	PREDICTED	ACTUAL
Obspar update status	NONE	UPDATED

2.3 Aspect



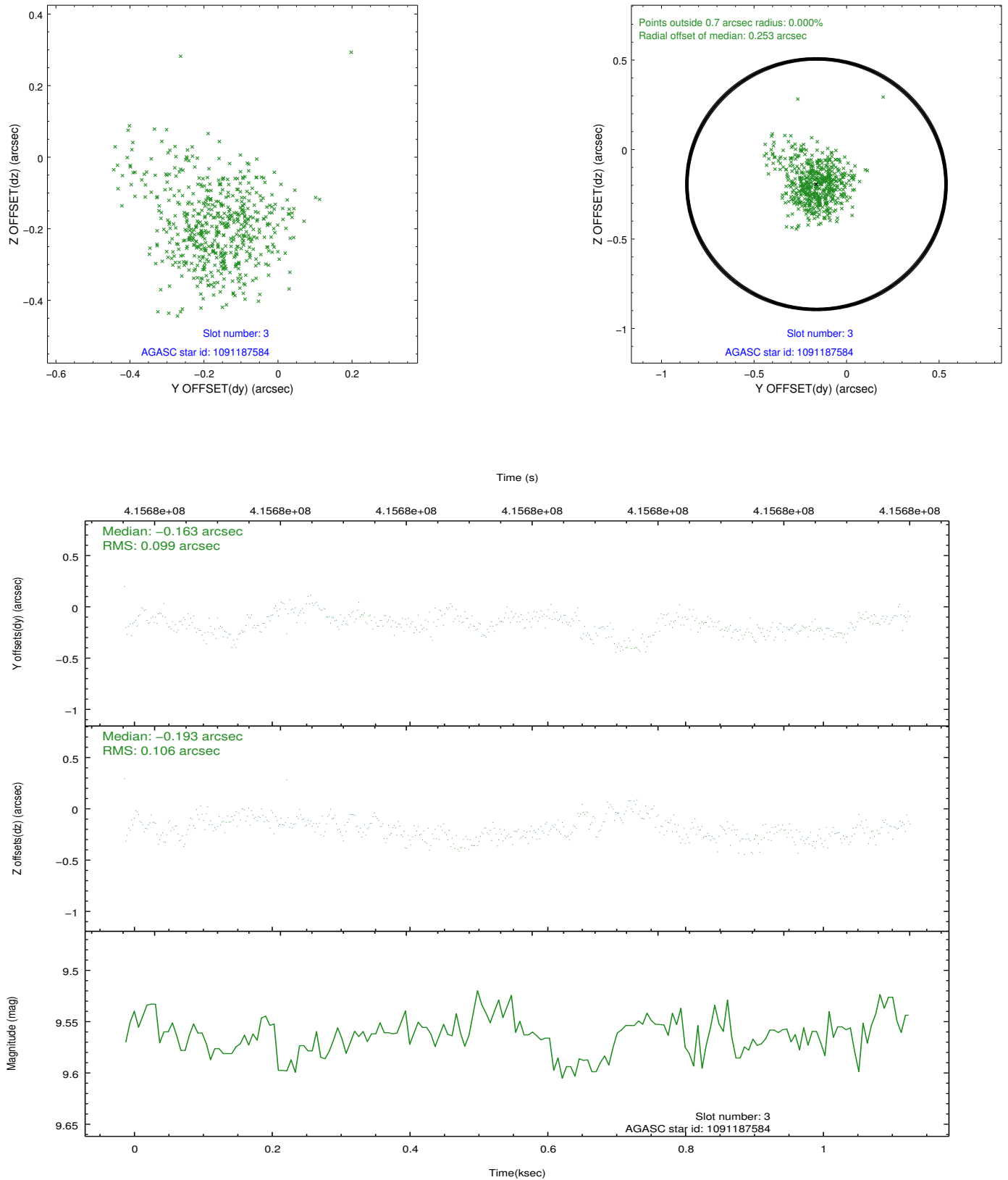


Slot Statistics

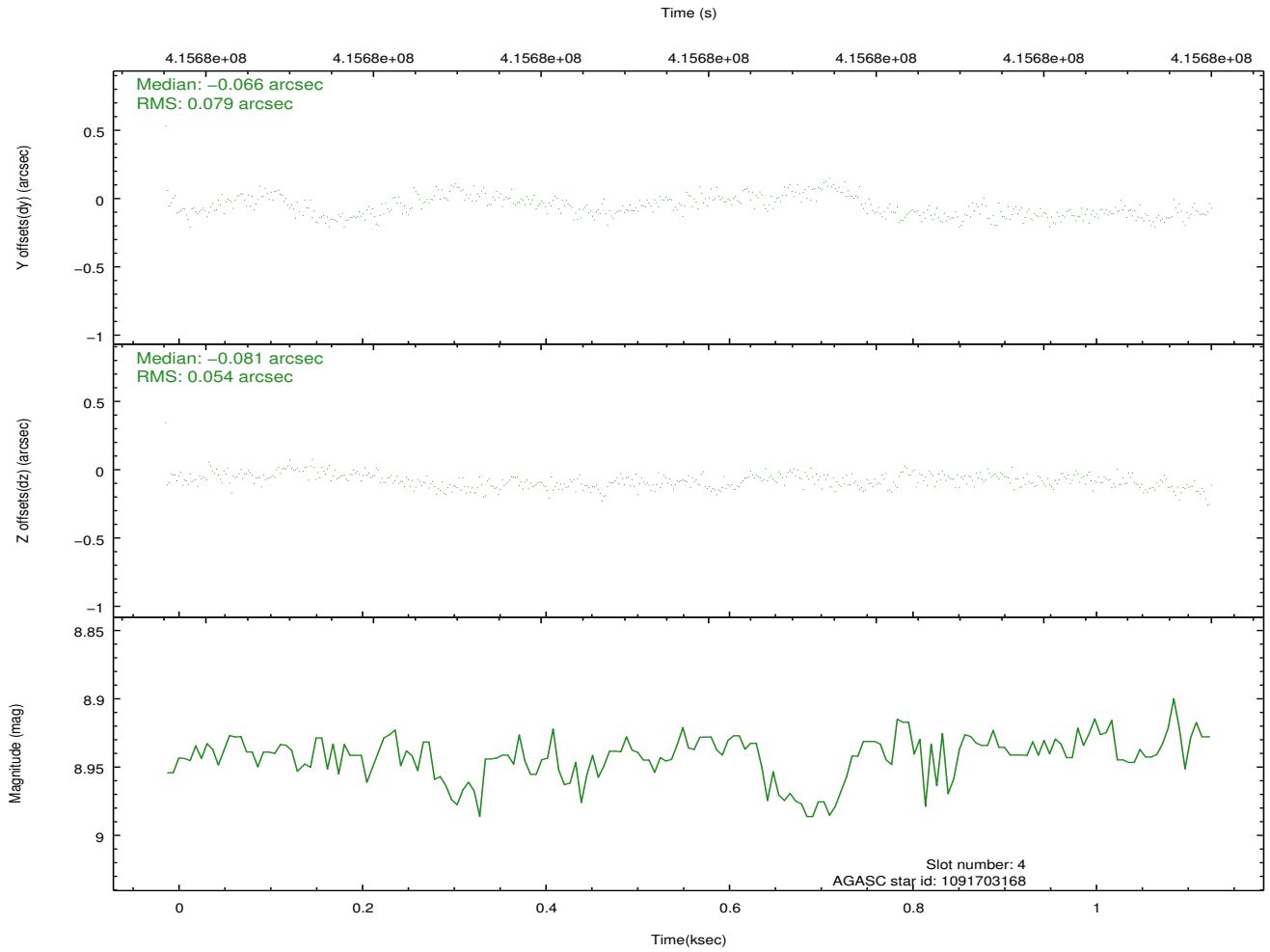
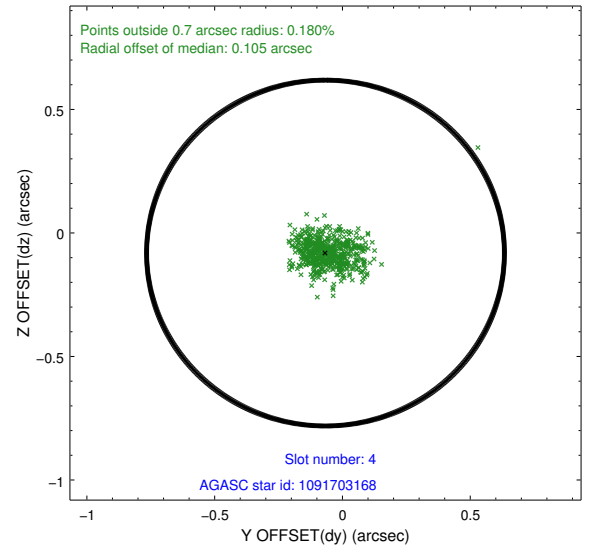
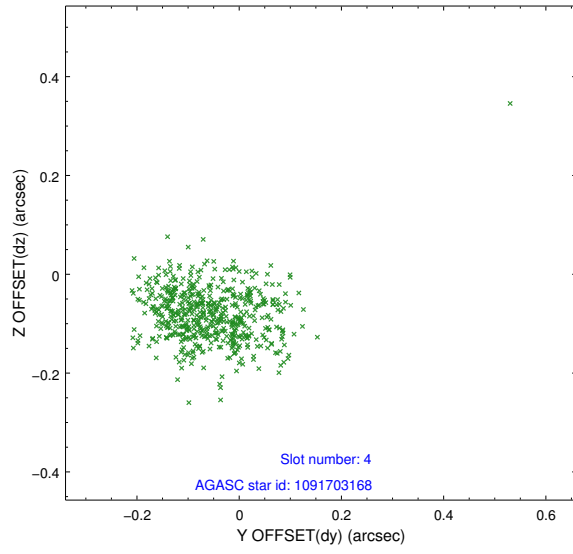
slot	status	id	mag	n_pts	med_dy	med_dz	dr1	dr2	ra	dec	mean_y	mean_z
0	FID	HRC-I-1	7.00	279	-0.085	0.007	0.008	0.016	0.000000	0.000000	-773.48	-1304.22
1	FID	HRC-I-2	7.03	279	0.234	-0.118	0.008	0.013	0.000000	0.000000	836.69	-1310.53
2	FID	HRC-I-3	7.08	278	-0.031	0.022	0.007	0.013	0.000000	0.000000	-1198.98	995.63
3	GUIDE	1091187584	9.56	557	-0.163	-0.193	0.151	0.261	249.154381	-46.614366	-23.43	1617.98
4	GUIDE	1091703168	8.94	556	-0.066	-0.081	0.096	0.157	249.174634	-47.078871	-1621.88	1127.84
5	GUIDE	1091705272	9.62	557	0.112	0.004	0.165	0.246	249.477650	-47.308944	-2227.43	193.22
6	GUIDE	1091709800	9.18	555	0.116	0.371	0.101	0.163	249.801955	-47.310212	-2028.01	-574.18
7	GUIDE	1091709408	9.21	556	-0.013	-0.092	0.106	0.168	249.304466	-47.312562	-2352.24	594.44

2.4 Star Slots

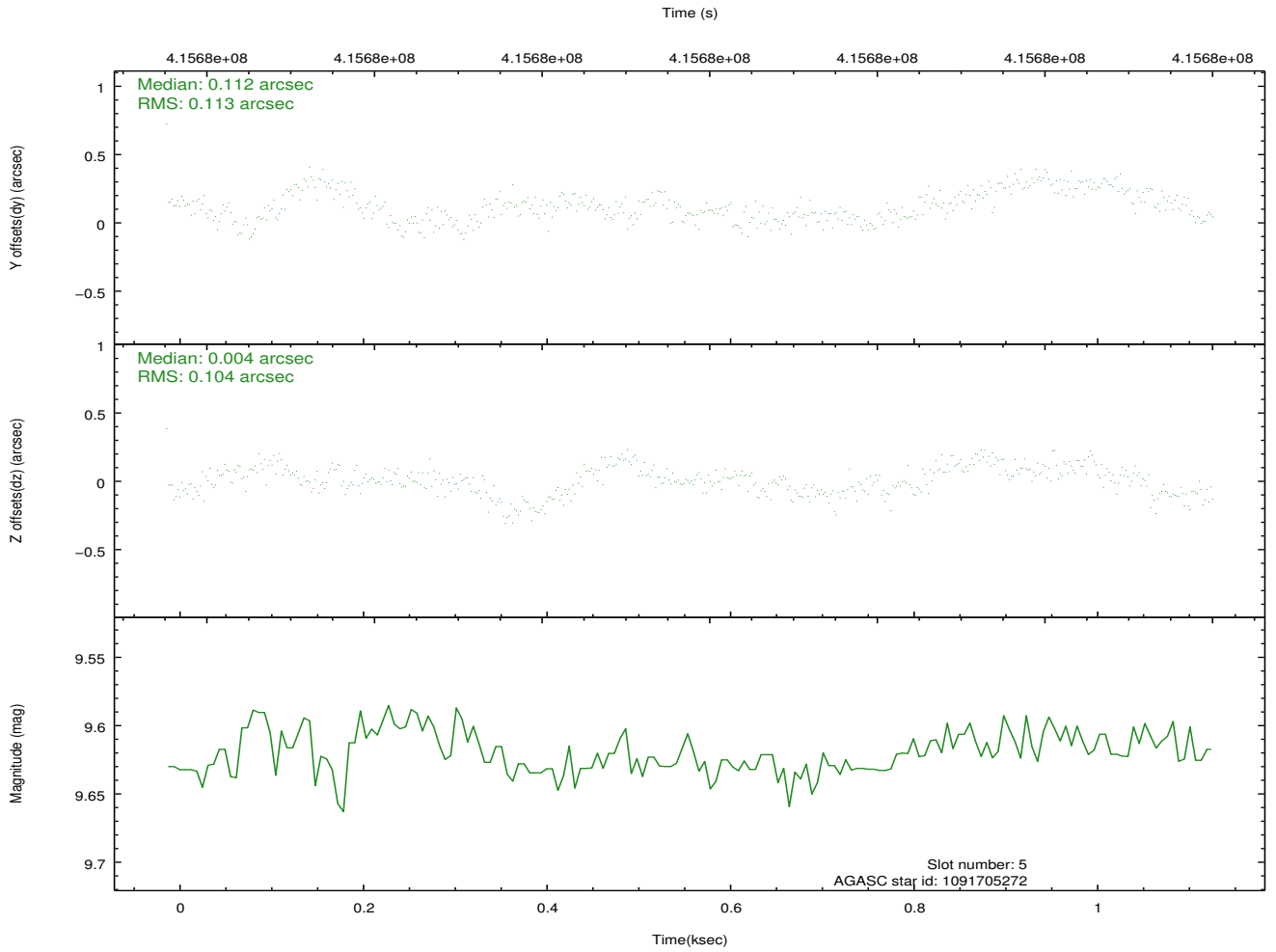
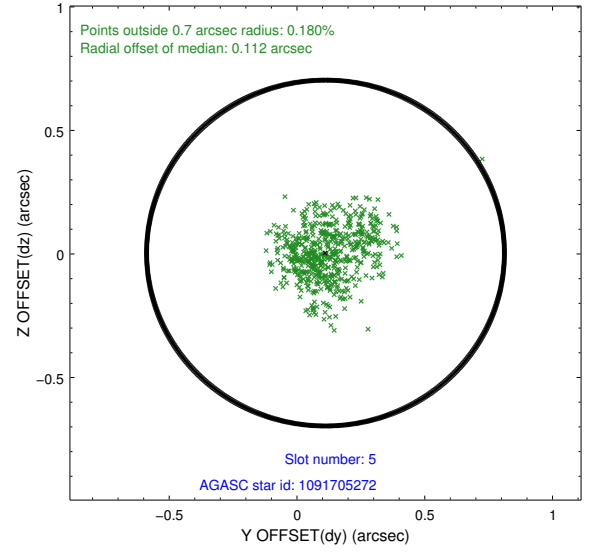
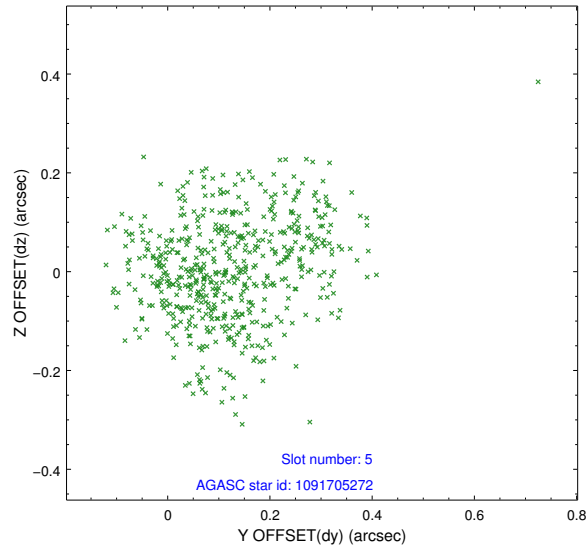
2.4.1 Slot 3



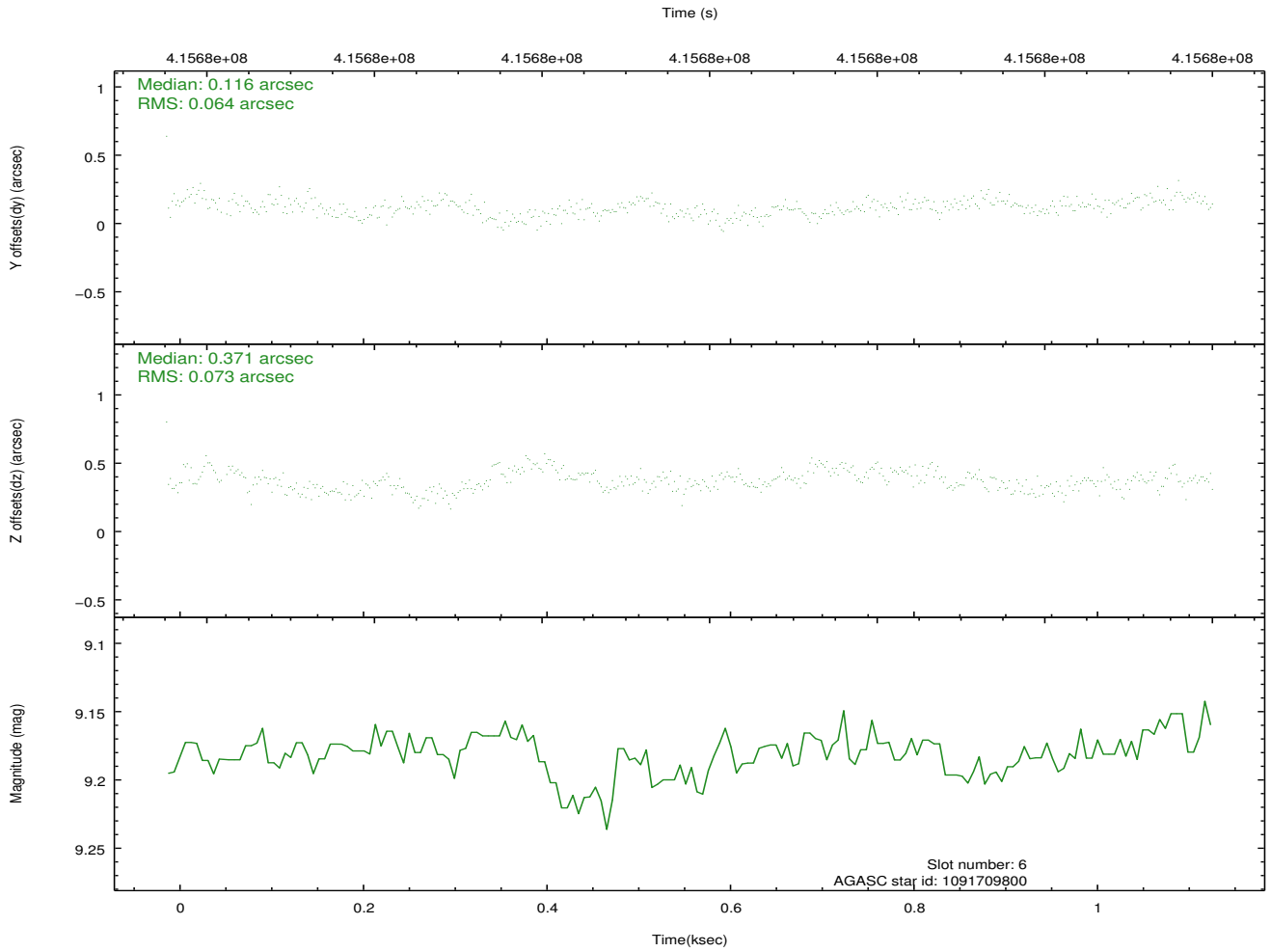
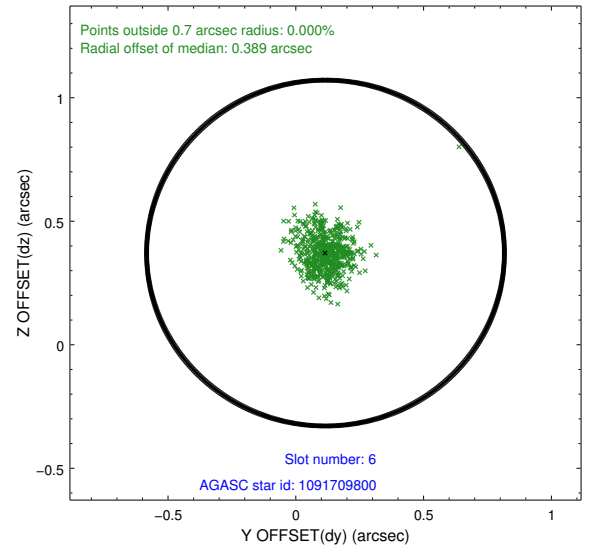
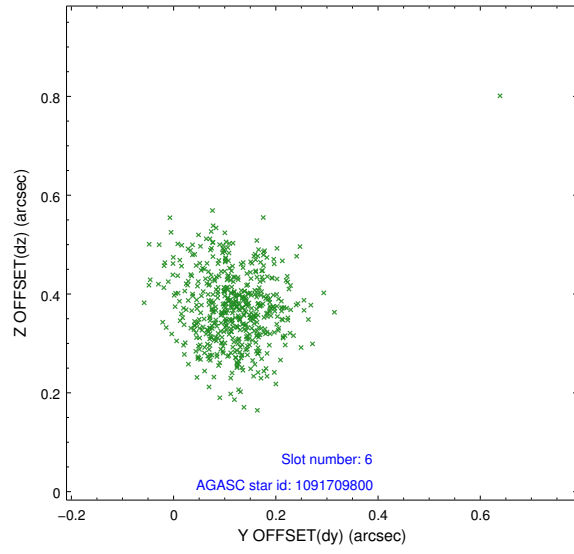
2.4.2 Slot 4



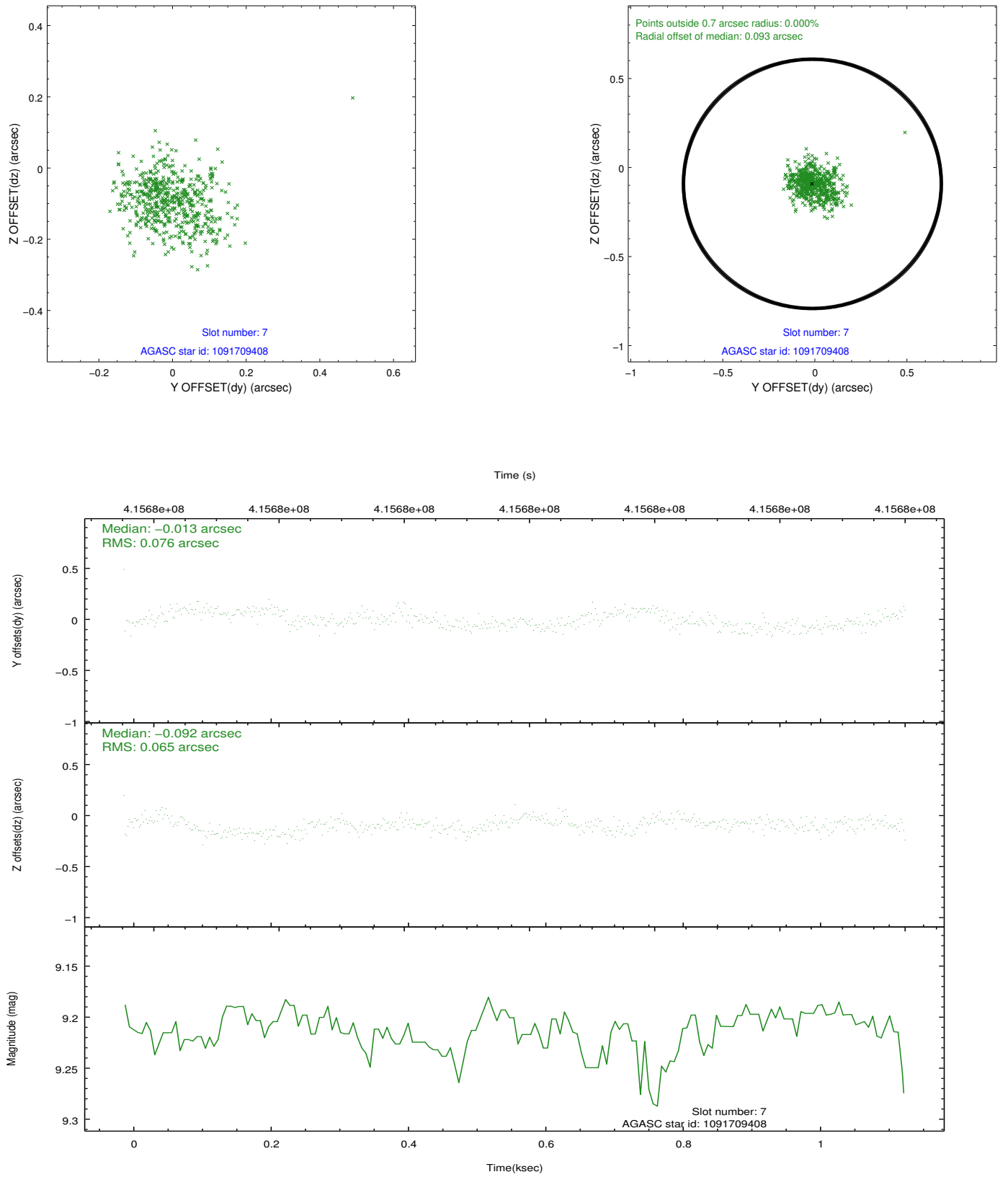
2.4.3 Slot 5



2.4.4 Slot 6

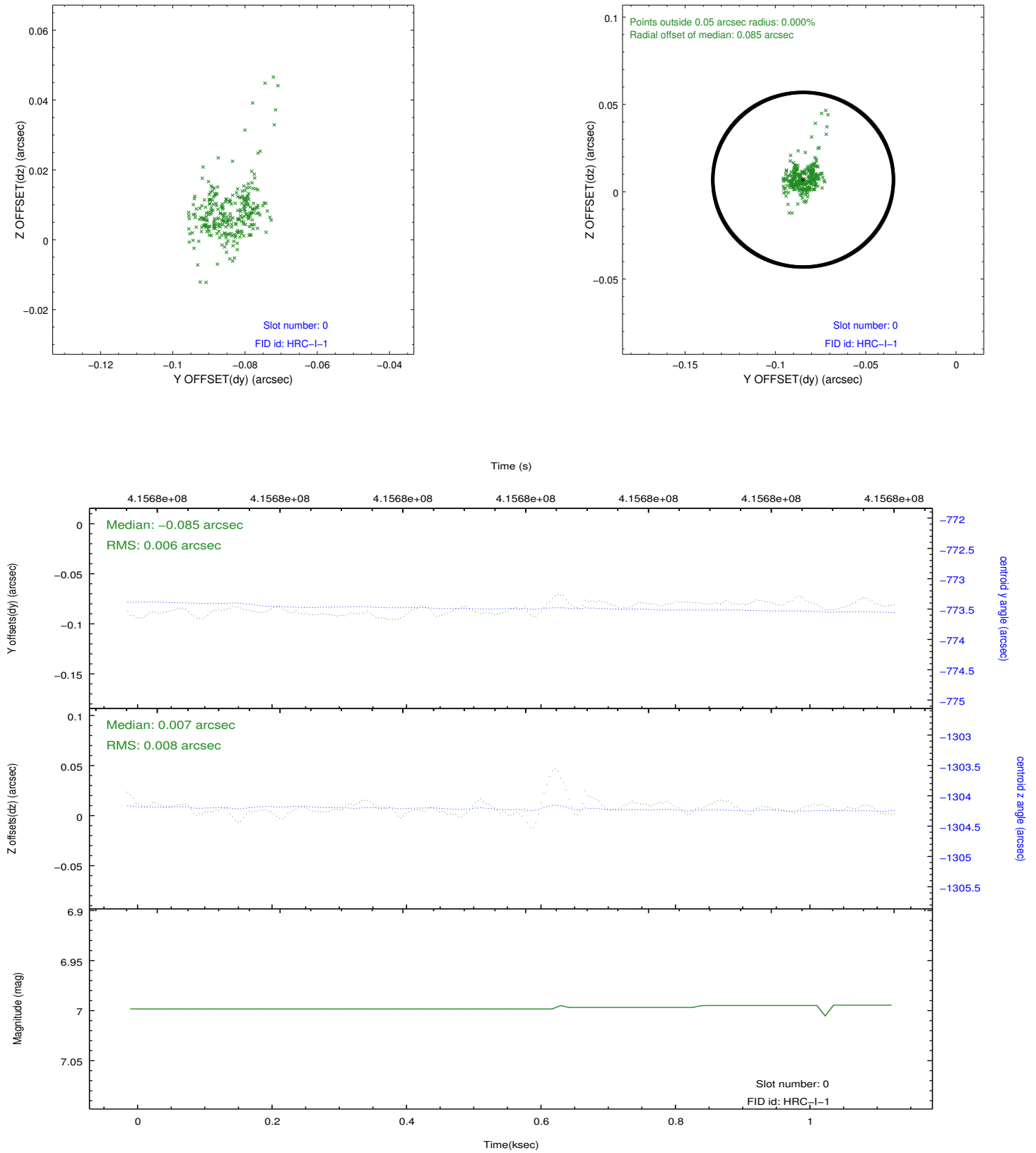


2.4.5 Slot 7

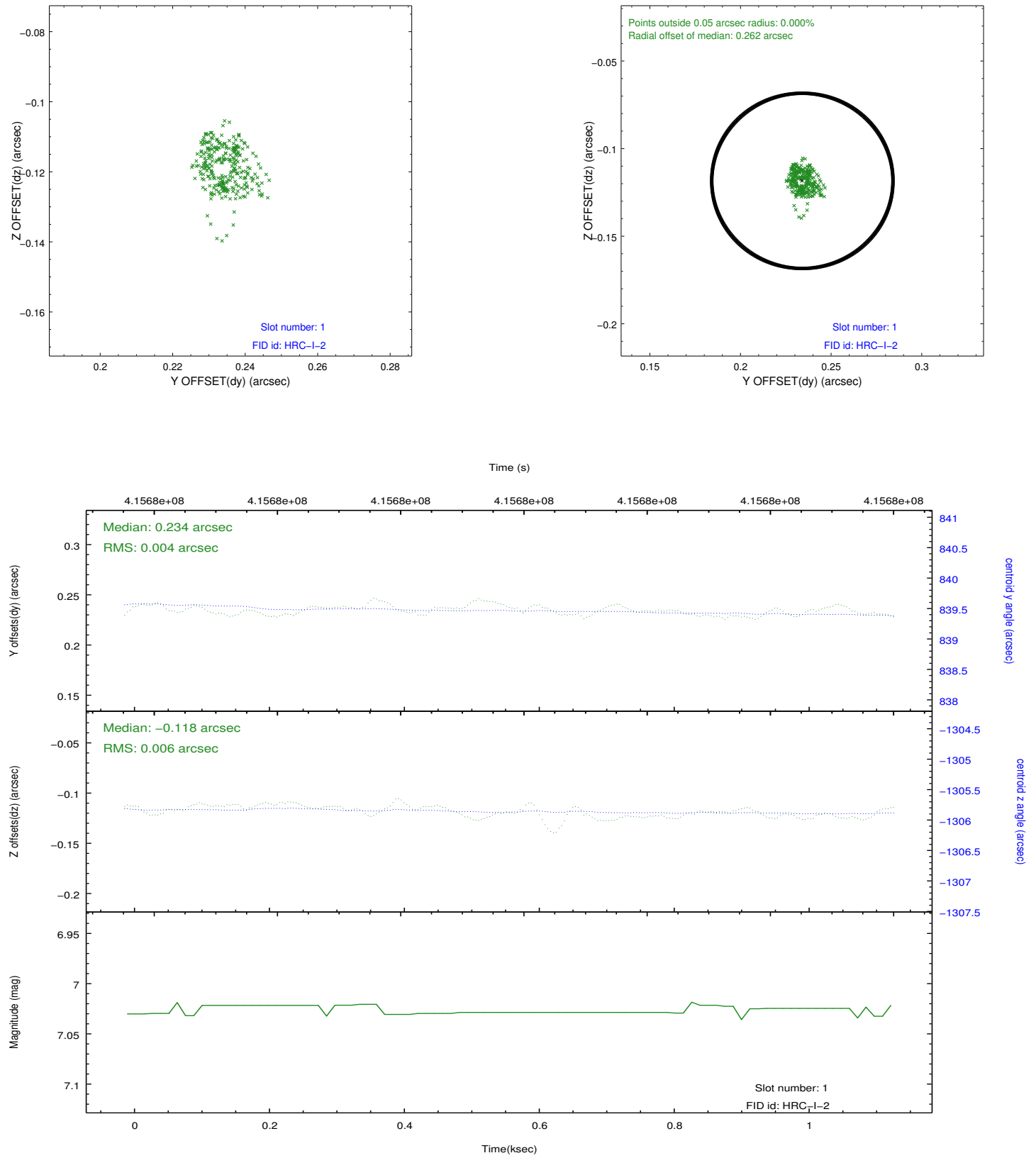


2.5 FID Slots

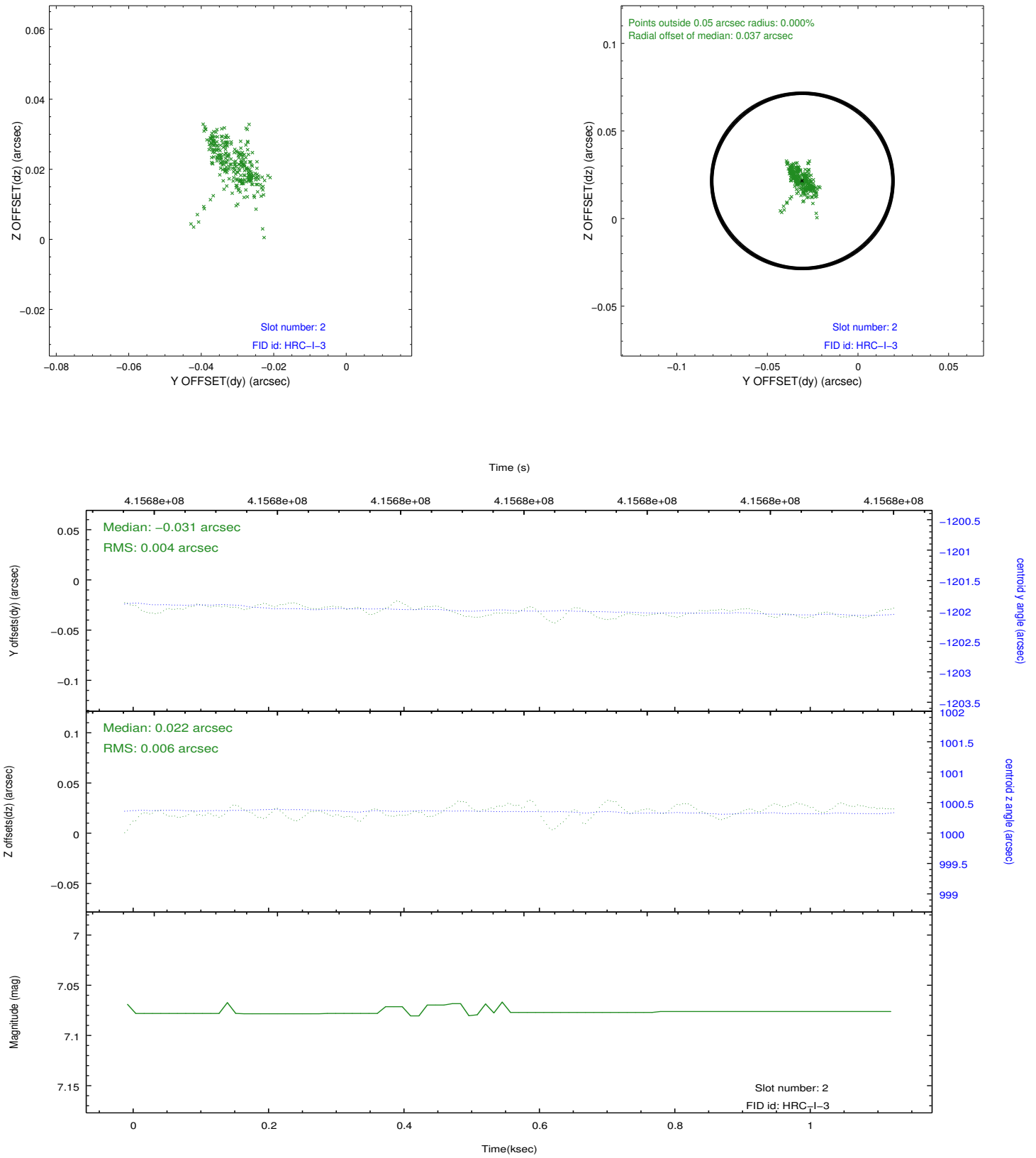
2.5.1 Slot 0



2.5.2 Slot 1



2.5.3 Slot 2



A Summary

A.1 Status

V&V Scientist	Beth Sundheim
V&V Date (YYYY-MM-DD)	2012.07.29
V&V Edition	1
V&V Disposition and Status	OK
V&V Charge Time	1.137750058949

A.2 Comments