

V&V Reference Report

L2 ASCDS Version : 8.4.3

Observation 12394 - L2 Version 2
Chandra X-Ray Center

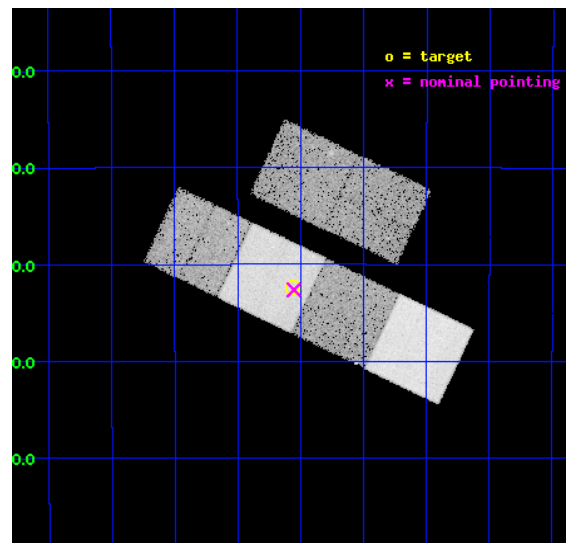
L2 Processing Date : Feb 12 2012

Contents

1	Front	2
2	OBI	3
2.1	OBI	3
2.1.1	Images	3
2.1.2	Bias	3
2.1.3	Parameters	4
2.1.4	Events	4
2.2	Compared Parameters	5
2.3	Aspect	6
2.4	Star Slots	9
2.4.1	Slot 3	9
2.4.2	Slot 4	10
2.4.3	Slot 5	11
2.4.4	Slot 6	12
2.4.5	Slot 7	13
2.5	FID Slots	14
2.5.1	Slot 0	14
2.5.2	Slot 1	15
2.5.3	Slot 2	16
A	Summary	17
A.1	Status	17
A.2	Comments	17

1 Front

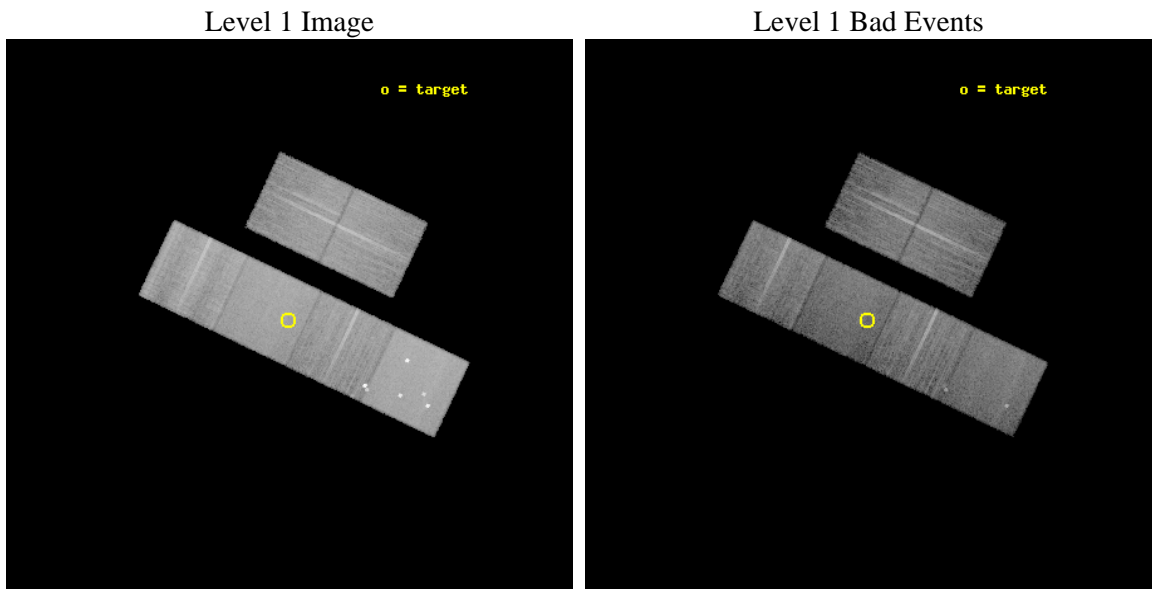
seq_num	200728	Sequence number
obs_id	12394	Observation id
title	Magnetically Sleepy Stars: An X-ray Survey of Candidate Stars in Extended Magnetic Minima	Proposal title
observer	Dr. Steven Saar	Principal investigator
object	HD 50806	Source name
dtcycle	0	
cycle	P	events from which exps? Prim/Second/Both
ra_targ	103.39125	Observer's specified target RA [deg]
dec_targ	-28.539778	Observer's specified target Dec [deg]
ra_nom	103.38825112889	Nominal RA [deg]
dec_nom	-28.543827190294	Nominal Dec [deg]
roll_nom	205.46976313256	Nominal Roll [deg]
revision	2	Processing version of data
ontime	20054.238574207	Sum of GTIs [s]
livetime	19800.299730167	Livetime [s]
ontime2	20054.27961421	Sum of GTIs [s]
ontime3	20054.115454197	Sum of GTIs [s]
ontime5	20054.197534204	Sum of GTIs [s]
ontime6	20054.1564942	Sum of GTIs [s]
ontime7	20054.238574207	Sum of GTIs [s]
ontime8	20054.074414194	Sum of GTIs [s]
l2events	218134	Number of level 2 events



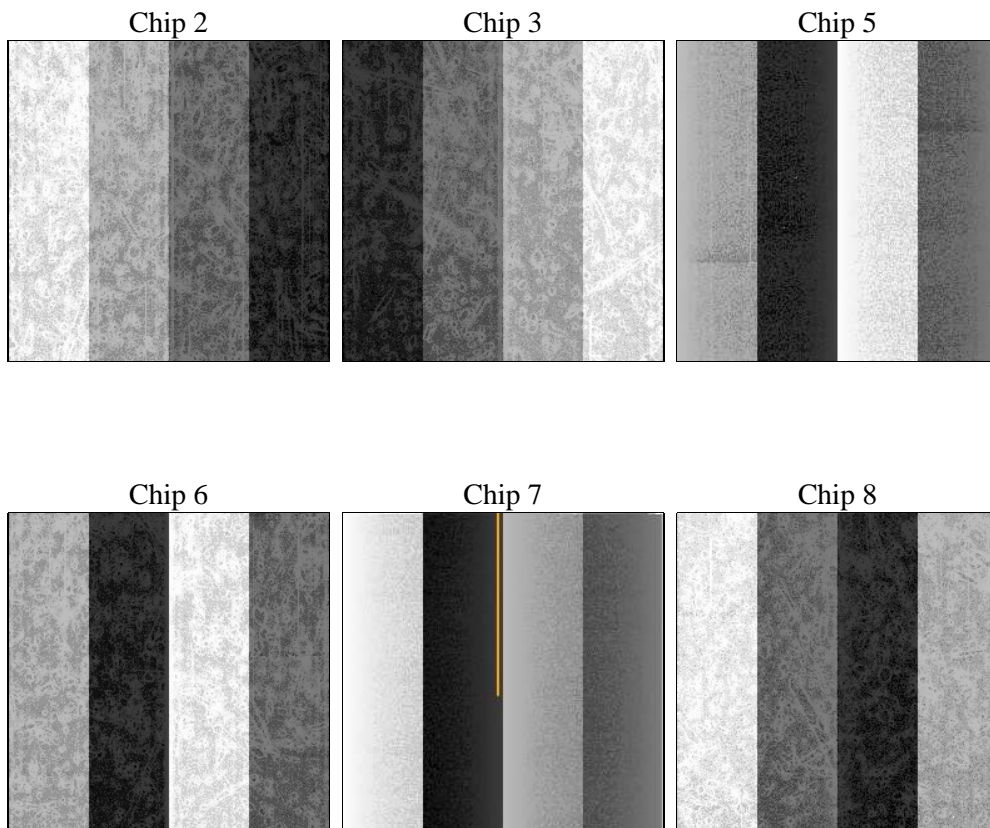
2 OBI

2.1 OBI

2.1.1 Images



2.1.2 Bias



2.1.3 Parameters

obi_num	0	Obi number	sched_exp_time	20000.000000	[s] Scheduled observation exposure time
ascdsver	8.4.3	Processing system revision	ontime	20054.238574207	Sum of GTIs [s]
caldsver	4.4.7	 	ontime2	20054.27961421	Sum of GTIs [s]
date	2012-02-12T11:10:36	Date and time of file creation	ontime3	20054.115454197	Sum of GTIs [s]
revision	2	Processing version of data	ontime5	20054.197534204	Sum of GTIs [s]
			ontime6	20054.1564942	Sum of GTIs [s]
			ontime7	20054.238574207	Sum of GTIs [s]
			ontime8	20054.074414194	Sum of GTIs [s]
			l1events	930264	Number of level 1 events

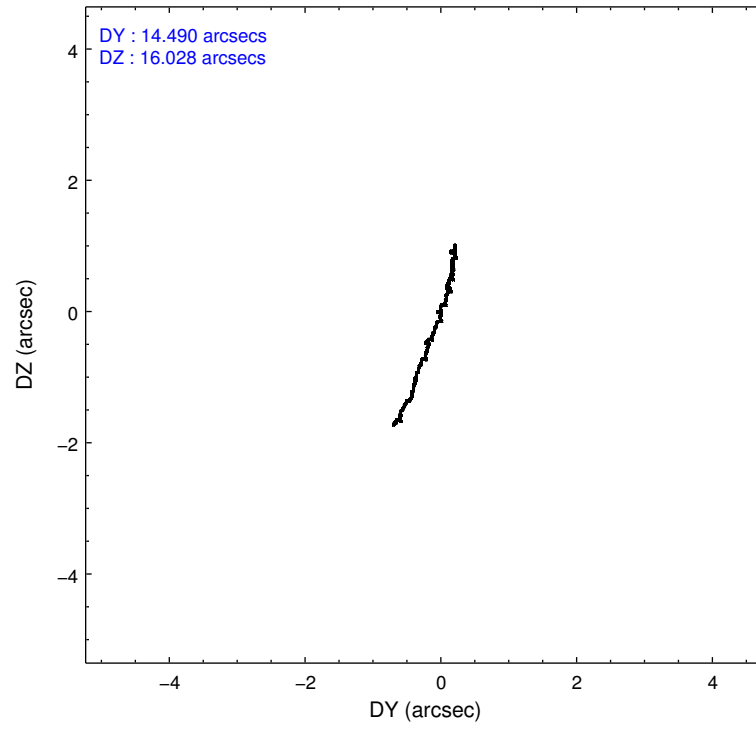
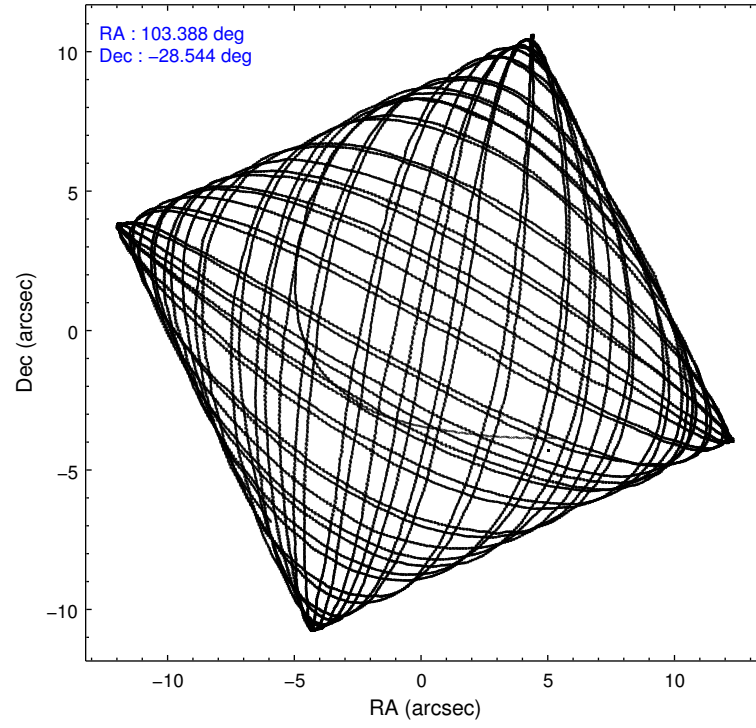
2.1.4 Events

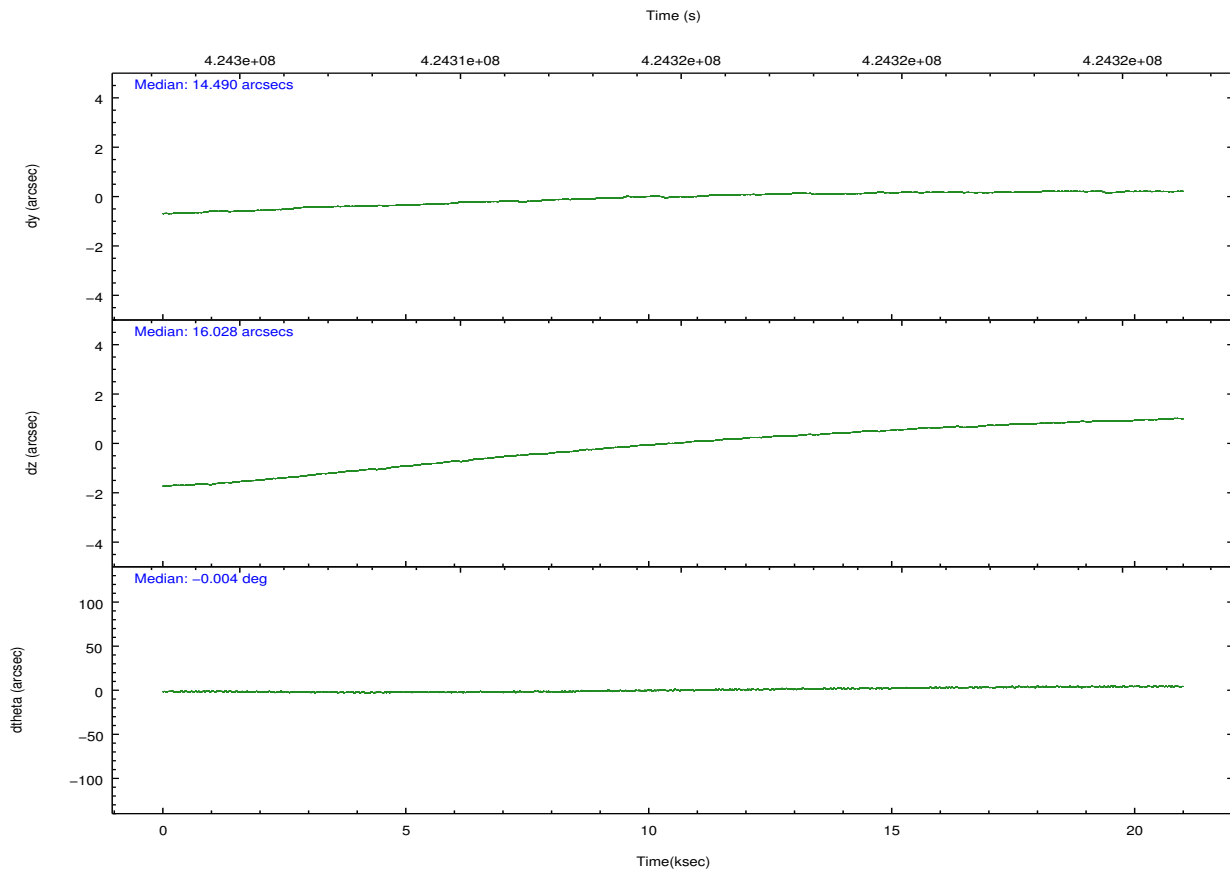
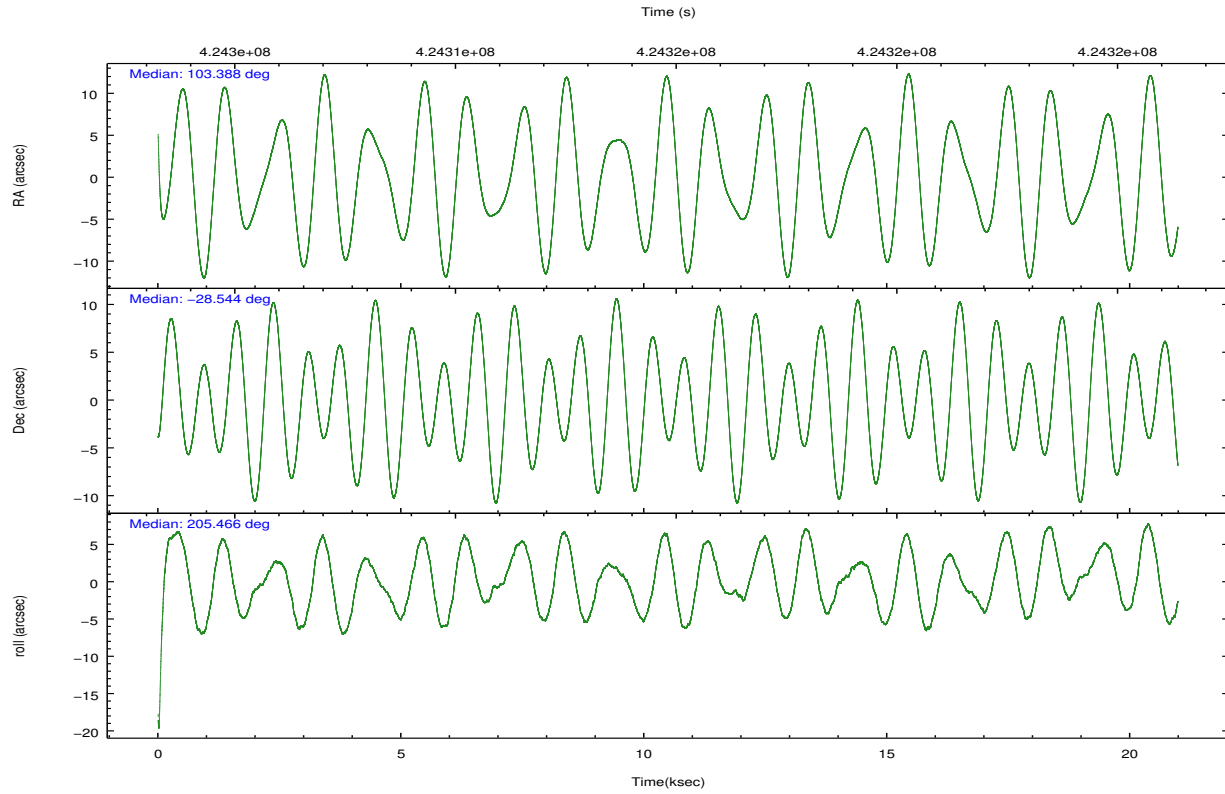
	ccd 2	ccd 3	ccd 5	ccd 6	ccd 7	ccd 8		ccd 2	ccd 3	ccd 5	ccd 6	ccd 7	ccd 8
level 1 events	130698	123547	211301	134036	161319	169363	grade 0 events	5142	4918	18799	11567	6591	15019
rejected events	116324	109797	101103	112235	88353	120027		3%	3%	8%	8%	4%	8%
rejected %	89%	88%	47%	83%	54%	70%	grade 1 events	80	67	1323	113	190	141
								0%	0%	0%	0%	0%	0%
							grade 2 events	3533	3097	31713	3501	14993	10632
								2%	2%	15%	2%	9%	6%
							grade 3 events	1448	1475	3833	1560	6287	5623
								1%	1%	1%	1%	3%	3%
							grade 4 events	1434	1477	3705	1648	6410	5309
								1%	1%	1%	1%	3%	3%
							grade 5 events	5132	5853	15290	5949	16920	8788
								3%	4%	7%	4%	10%	5%
							grade 6 events	2819	2786	52168	3528	38696	12754
								2%	2%	24%	2%	23%	7%
							grade 7 events	111110	103874	84470	106170	71232	111097
								85%	84%	39%	79%	44%	65%

2.2 Compared Parameters

Parameter	Planned	Actual	Parameter	Planned	Actual
Instrument	ACIS	ACIS	Obspar format version number	7	7
Detector	ACIS-235678	ACIS-235678	Obspar file type	PREDICTED	ACTUAL
Grating	NONE	NONE	Obspar update status	NONE	UPDATED
Data mode	VFAINT	VFAINT	CCD I0 on	N	N
Observation mode	POINTING	POINTING	CCD I1 on	N	N
[deg] Pointing RA	103.405548	103.3882511288853	CCD I2 on	O2	Y
[deg] Pointing Dec	-28.521121	-28.54382719029379	CCD I3 on	O3	Y
[deg] Pointing Roll	205.321412	205.4697631325612	CCD S0 on	N	N
[mm] SIM focus pos	-0.684267	-0.6828225247311905	CCD S1 on	O5	Y
[mm] SIM defocus	0	0.001444936568705701	CCD S2 on	O1	Y
[mm] SIM translation stage pos	-190.132523	-190.1400660498719	CCD S3 on	Y	Y
[mm] SIM translation stage offset	0	0.00754346686406393	CCD S4 on	O4	Y
[s] Observation start time (MET)	424305314.184000	424303425.81466	CCD S5 on	N	N
Observation start date	2011-06-12T22:34:08	2011-06-12T22:03:45	Number of optional ACIS chips dropped	0	0
[s] Observation end time (MET)	424325314.184000	424326313.04085	On-chip summing requested	N	N
Observation end date	2011-06-13T04:07:28	2011-06-13T04:25:13	Subarray requested	NONE	NONE
Read mode	TIMED	TIMED	Alternating exposures requested	N	N
			[s] Primary exposure time	0.000000	3.2

2.3 Aspect



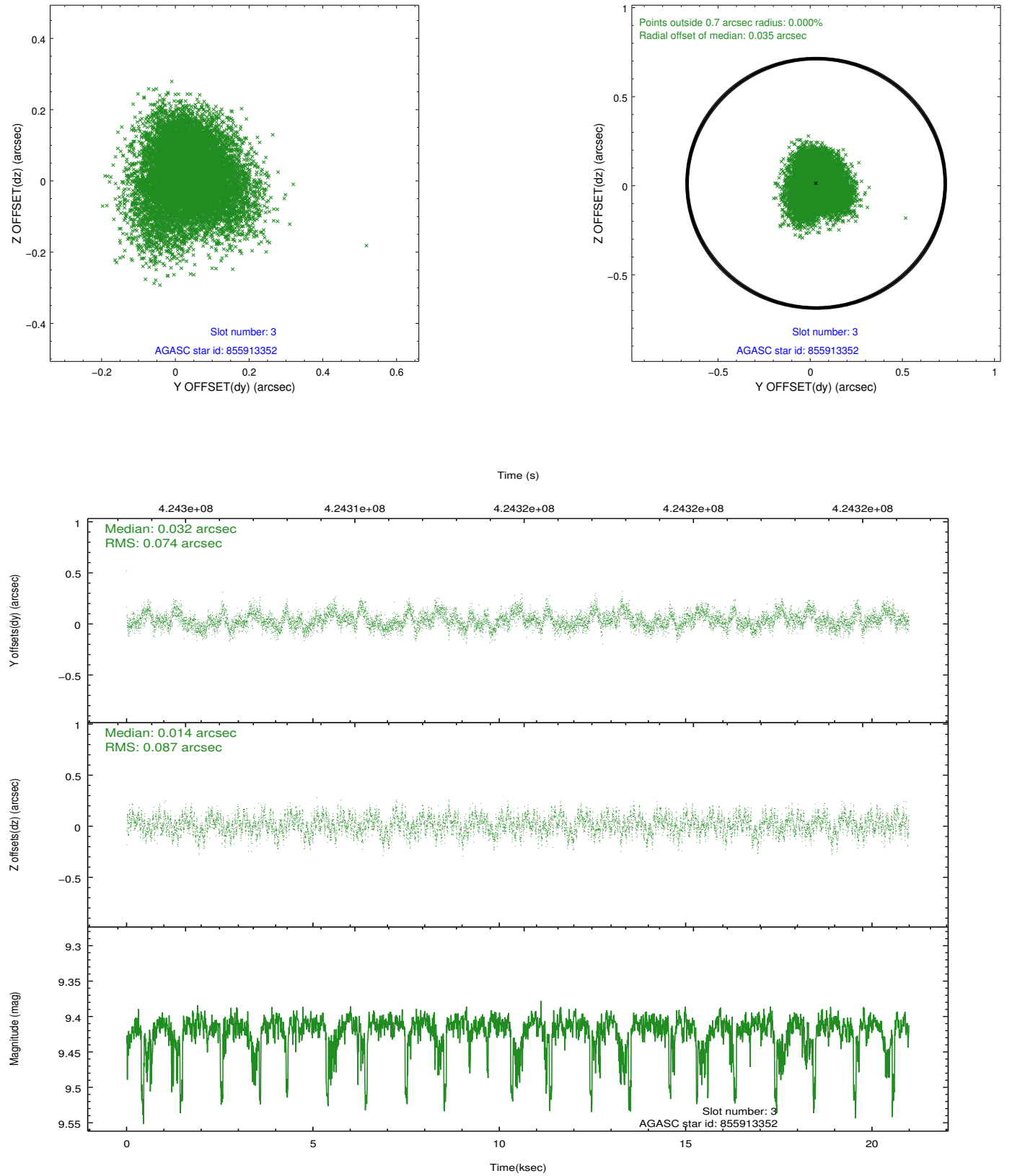


Slot Statistics

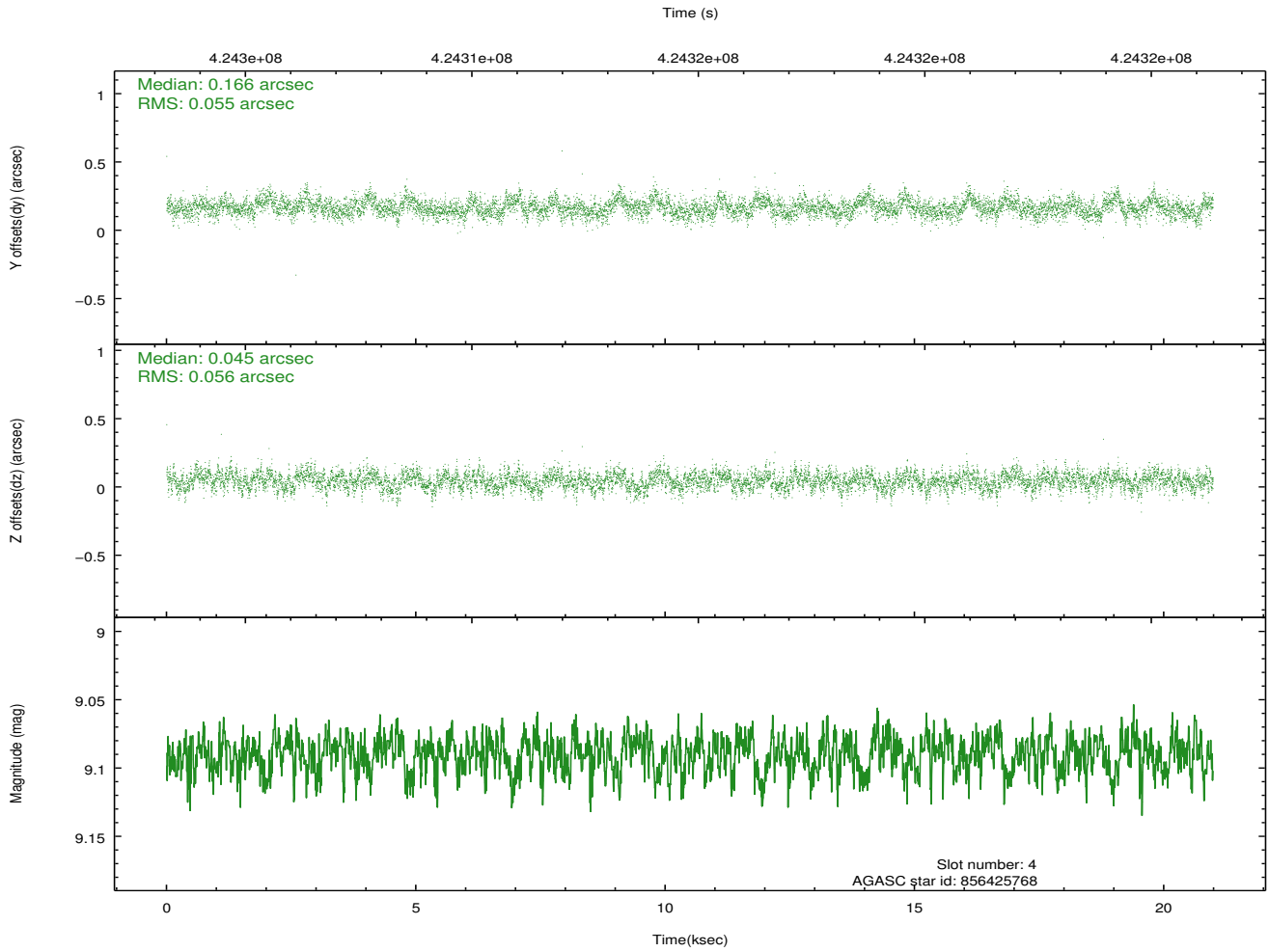
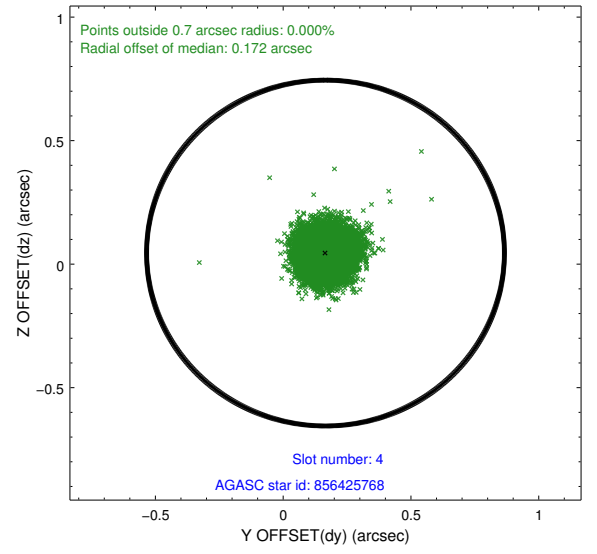
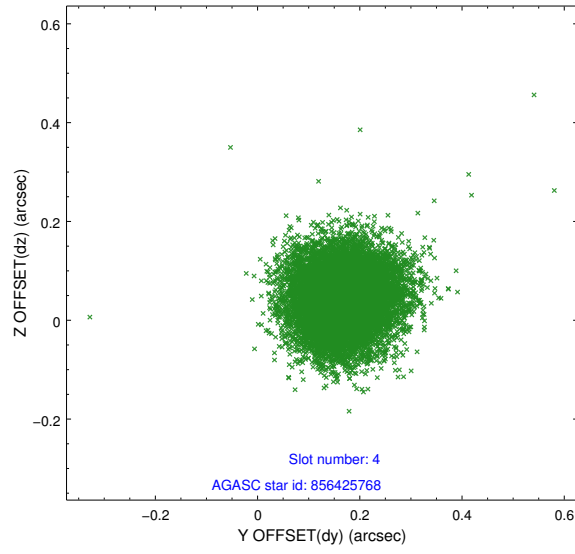
slot	status	id	mag	n_pts	med_dy	med_dz	dr1	dr2	ra	dec	mean_y	mean_z
0	FID	ACIS-S-2	6.90	5119	-0.073	-0.026	0.014	0.025	0.000000	0.000000	-767.43	-1737.31
1	FID	ACIS-S-4	6.98	5118	0.201	0.042	0.009	0.017	0.000000	0.000000	2146.05	171.06
2	FID	ACIS-S-5	7.00	5119	-0.158	-0.007	0.013	0.028	0.000000	0.000000	-1820.14	164.89
3	GUIDE	855913352	9.42	10204	0.032	0.014	0.122	0.196	103.763877	-28.119852	-1645.15	-817.44
4	GUIDE	856425768	9.09	10230	0.166	0.045	0.083	0.133	102.912314	-28.634646	1585.24	-293.82
5	GUIDE	855903176	8.77	10233	-0.094	0.050	0.079	0.130	103.019468	-27.979259	276.73	-2286.39
6	GUIDE	856424816	7.61	10237	-0.167	-0.145	0.064	0.099	103.117421	-29.097846	1707.65	1490.03
7	GUIDE	855911352	8.72	10227	0.053	0.039	0.092	0.144	103.507047	-27.760010	-1463.50	-2338.16

2.4 Star Slots

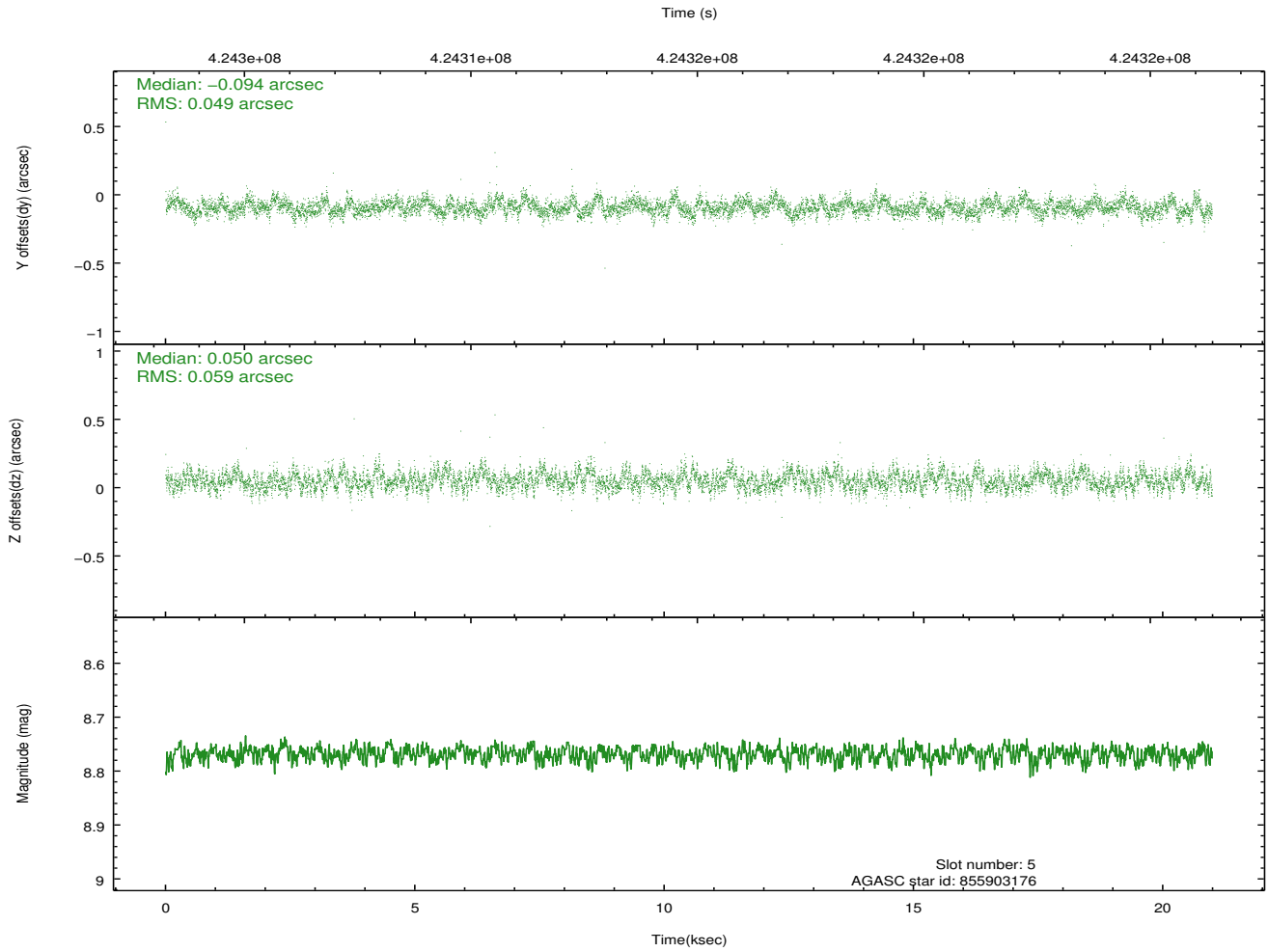
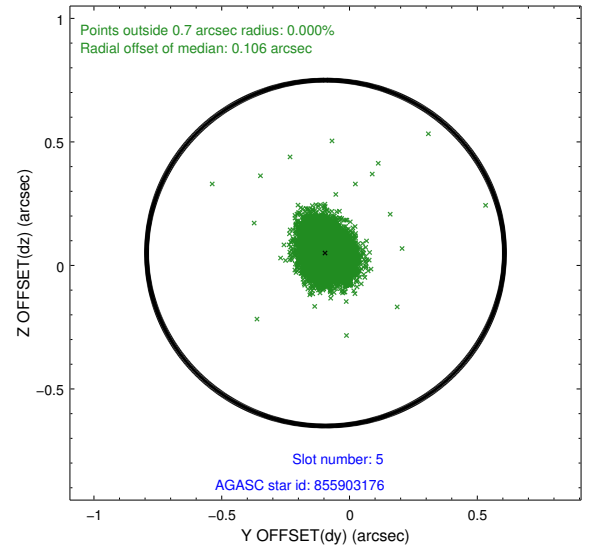
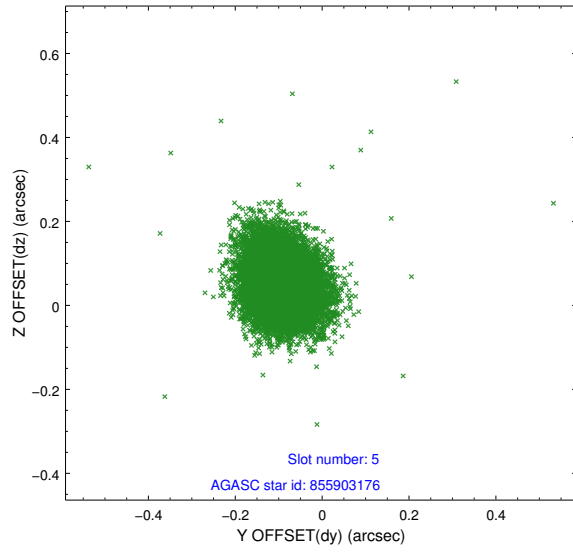
2.4.1 Slot 3



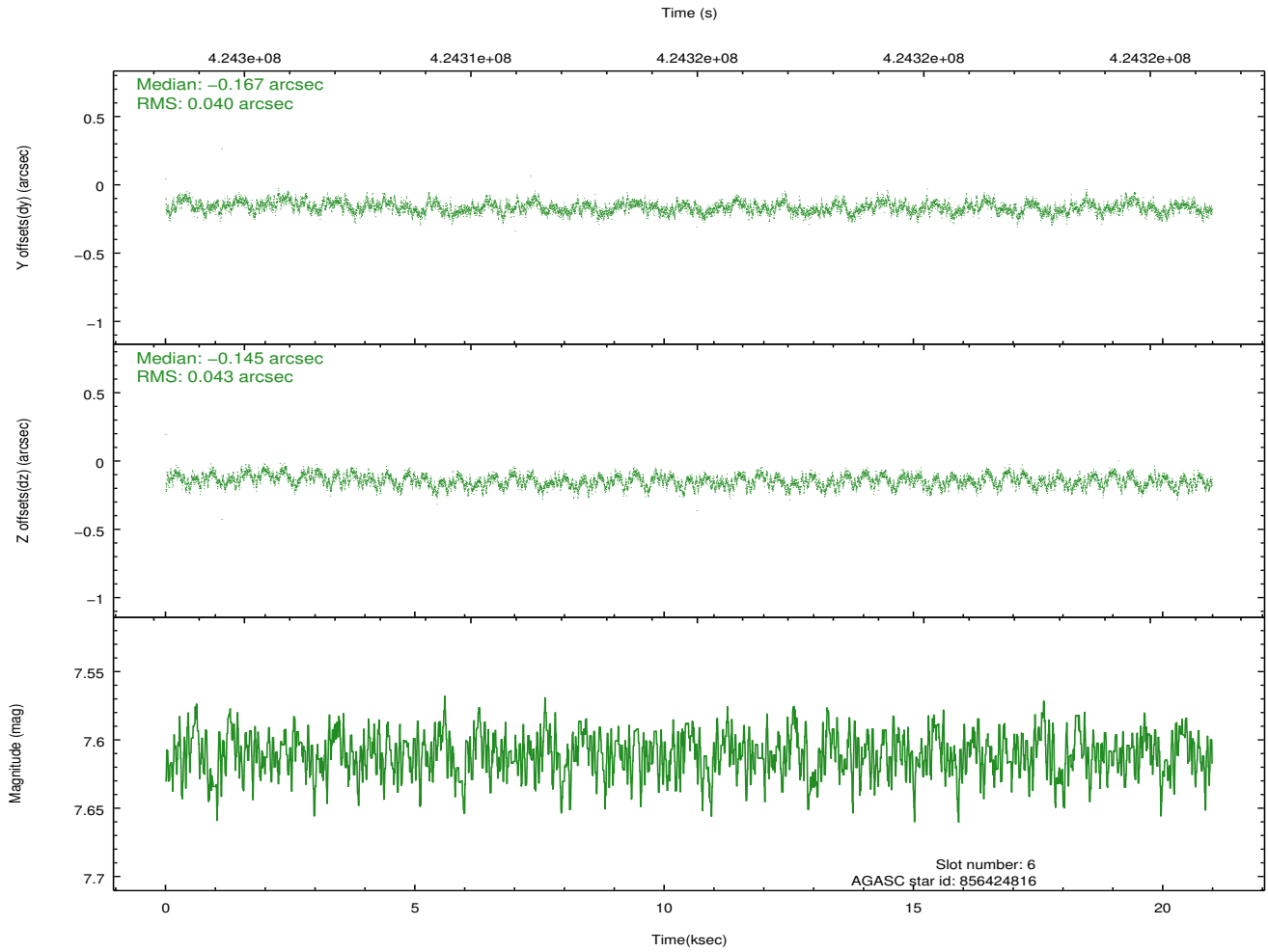
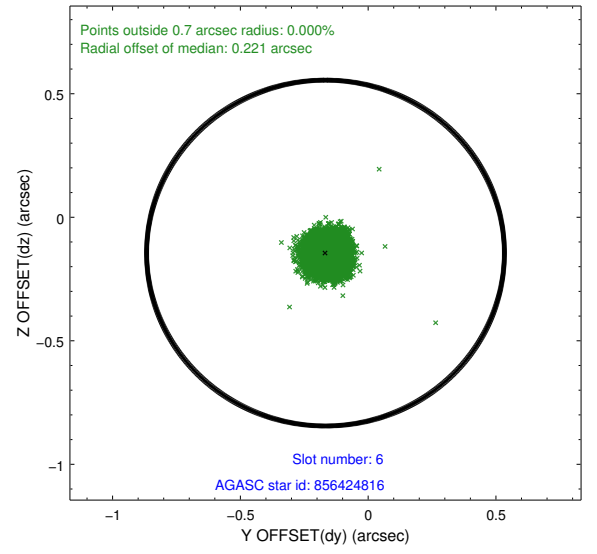
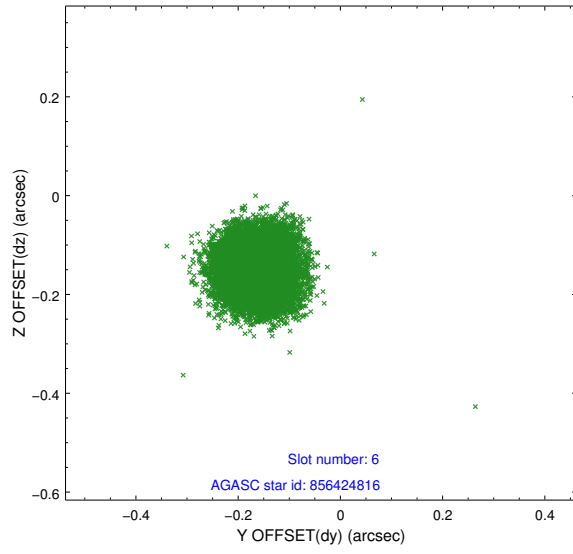
2.4.2 Slot 4



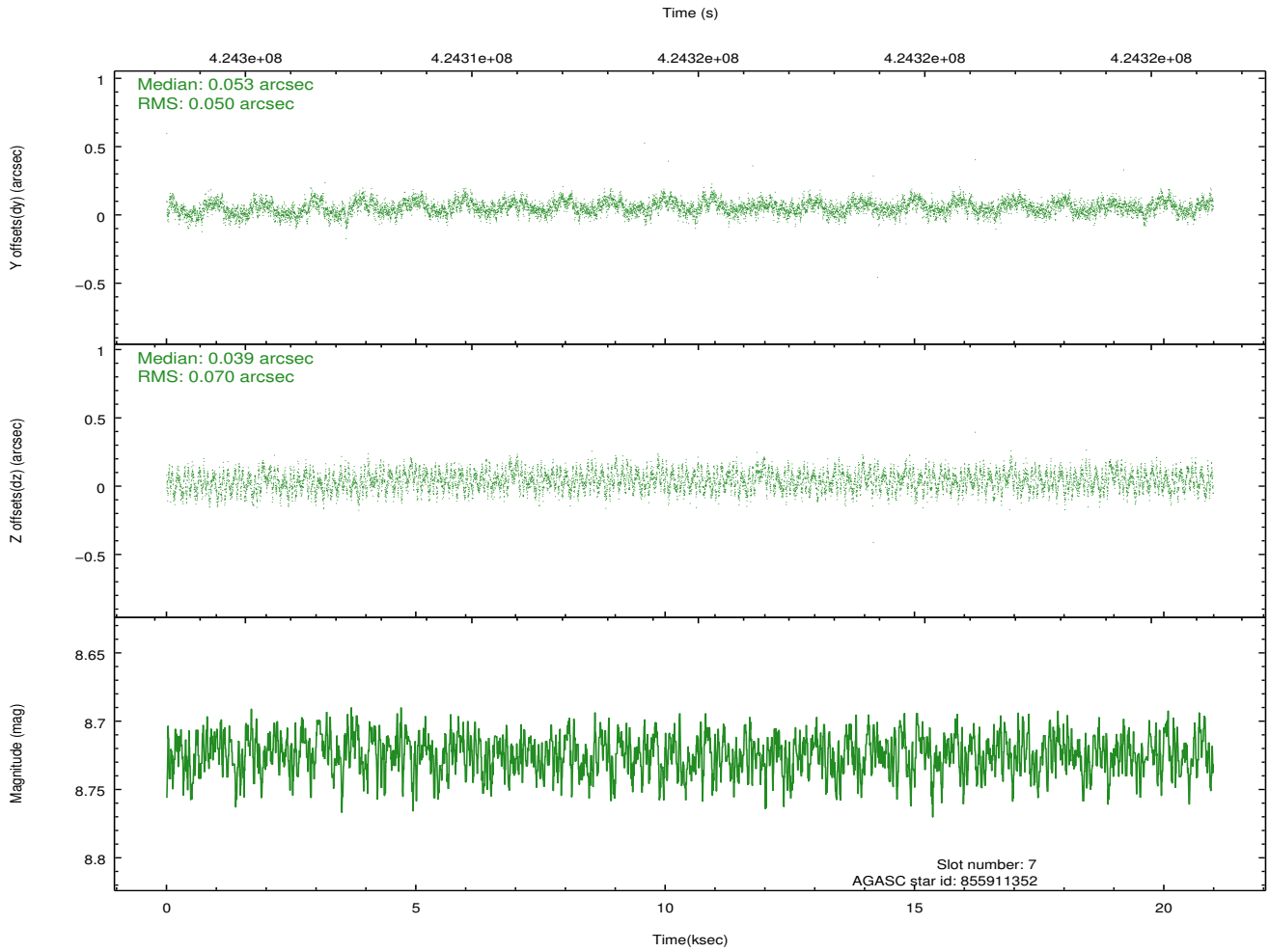
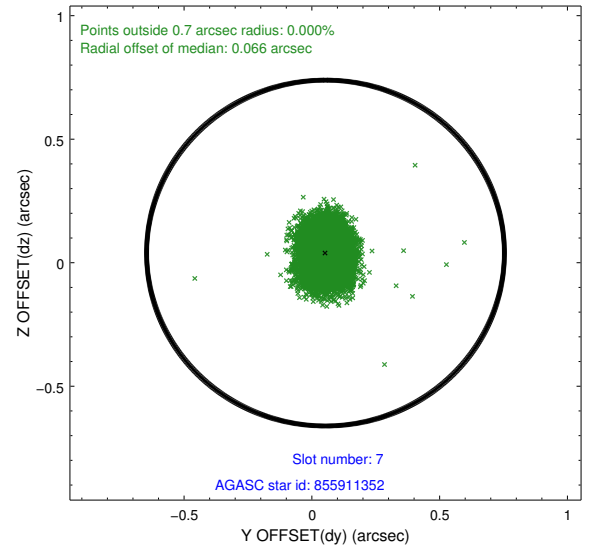
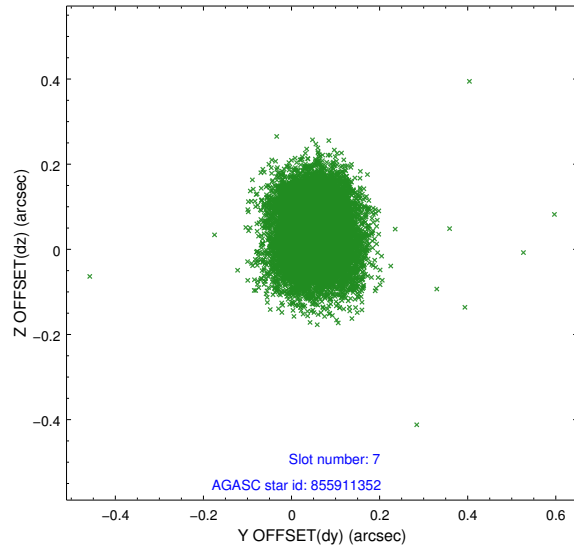
2.4.3 Slot 5



2.4.4 Slot 6

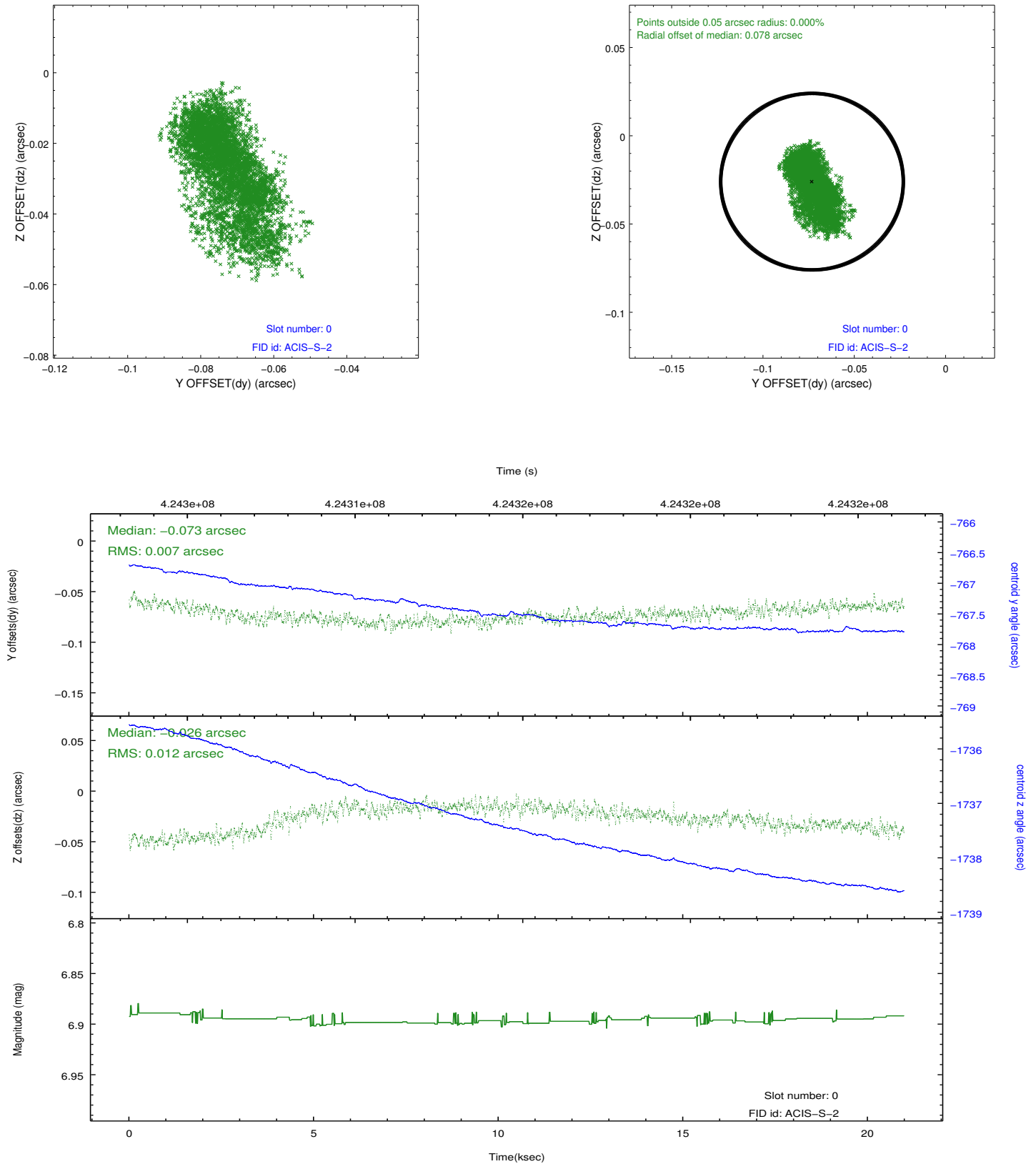


2.4.5 Slot 7

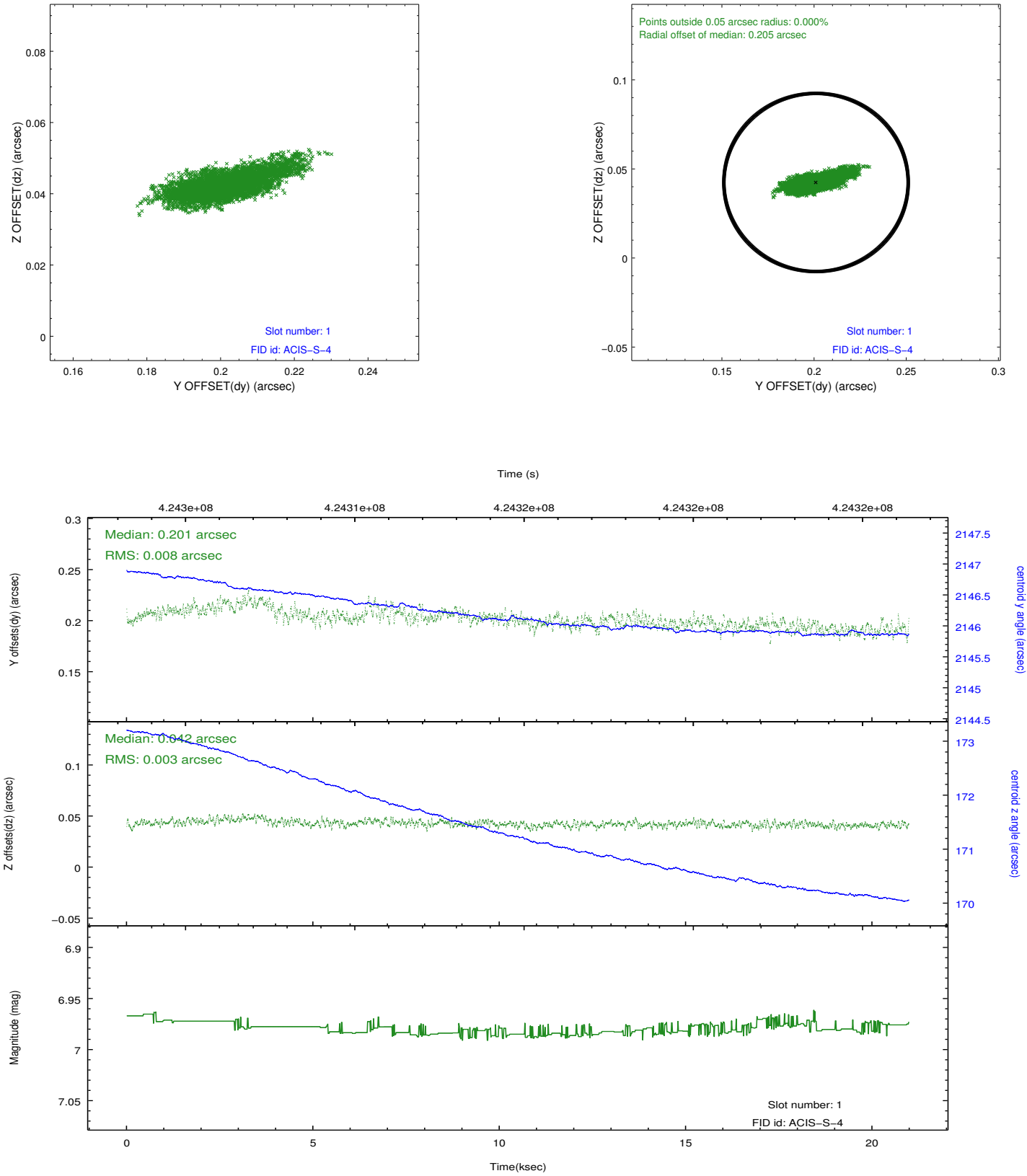


2.5 FID Slots

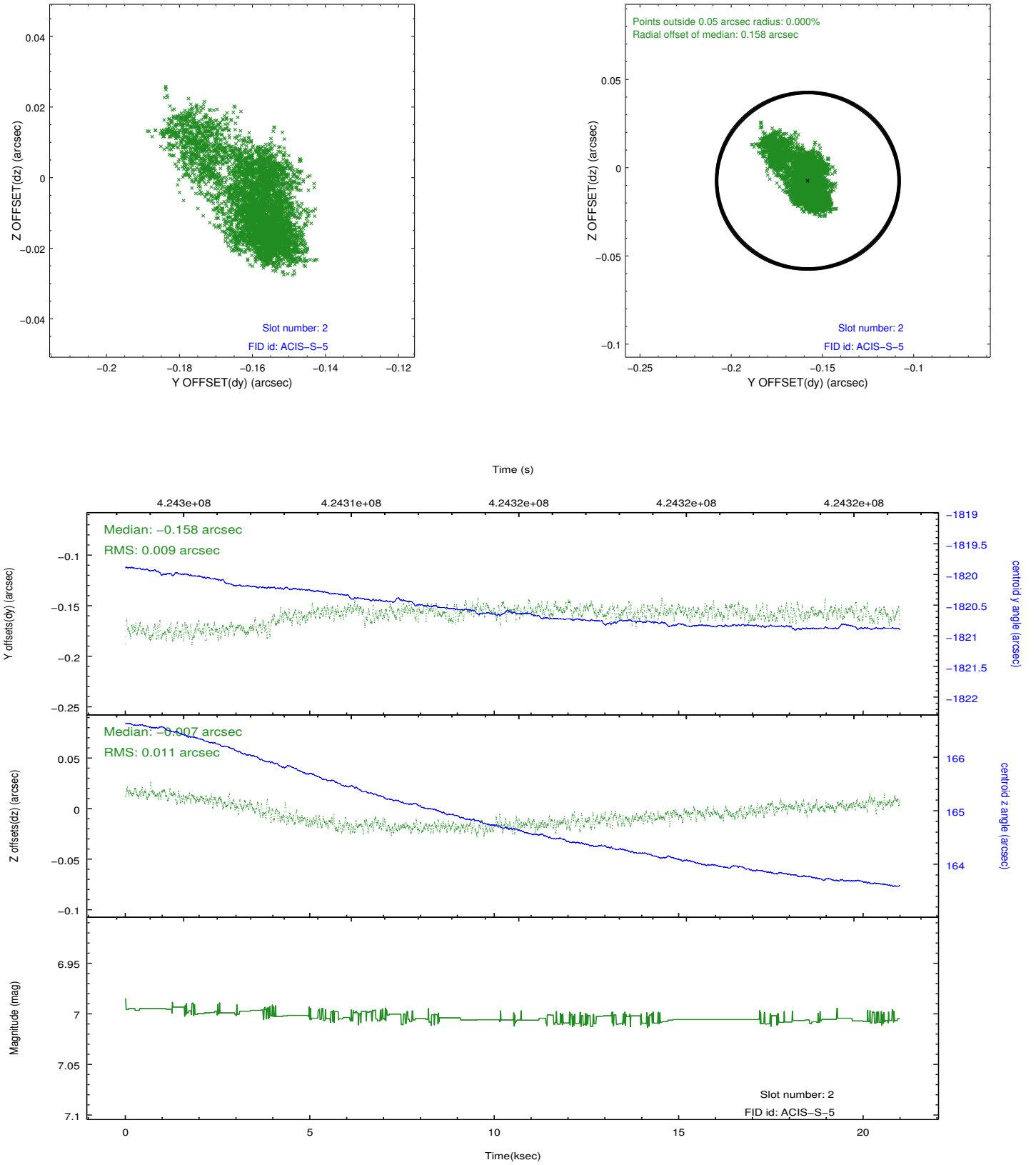
2.5.1 Slot 0



2.5.2 Slot 1



2.5.3 Slot 2



A Summary

A.1 Status

V&V Scientist	Beth Sundheim
V&V Date (YYYY-MM-DD)	2012.02.14
V&V Edition	1
V&V Disposition and Status	OK
V&V Charge Time	20.054238573134

A.2 Comments