

V&V Reference Report

L2 ASCDS Version : 8.4.3

Observation 12341 - L2 Version 2
Chandra X-Ray Center

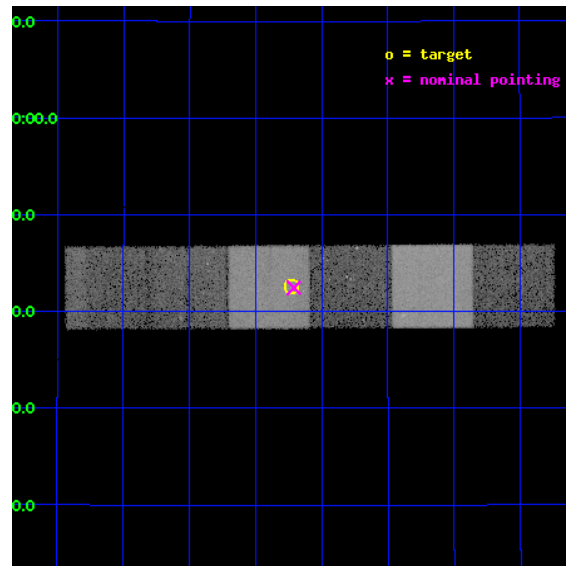
L2 Processing Date : Feb 18 2012

Contents

1	Front	2
2	OBI	3
2.1	OBI	3
2.1.1	Images	3
2.1.2	Bias	3
2.1.3	Parameters	4
2.1.4	Events	4
2.2	Compared Parameters	5
2.3	Aspect	6
2.4	Star Slots	9
2.4.1	Slot 3	9
2.4.2	Slot 4	10
2.4.3	Slot 5	11
2.4.4	Slot 6	12
2.4.5	Slot 7	13
2.5	FID Slots	14
2.5.1	Slot 0	14
2.5.2	Slot 1	15
2.5.3	Slot 2	16
A	Summary	17
A.1	Status	17
A.2	Comments	17

1 Front

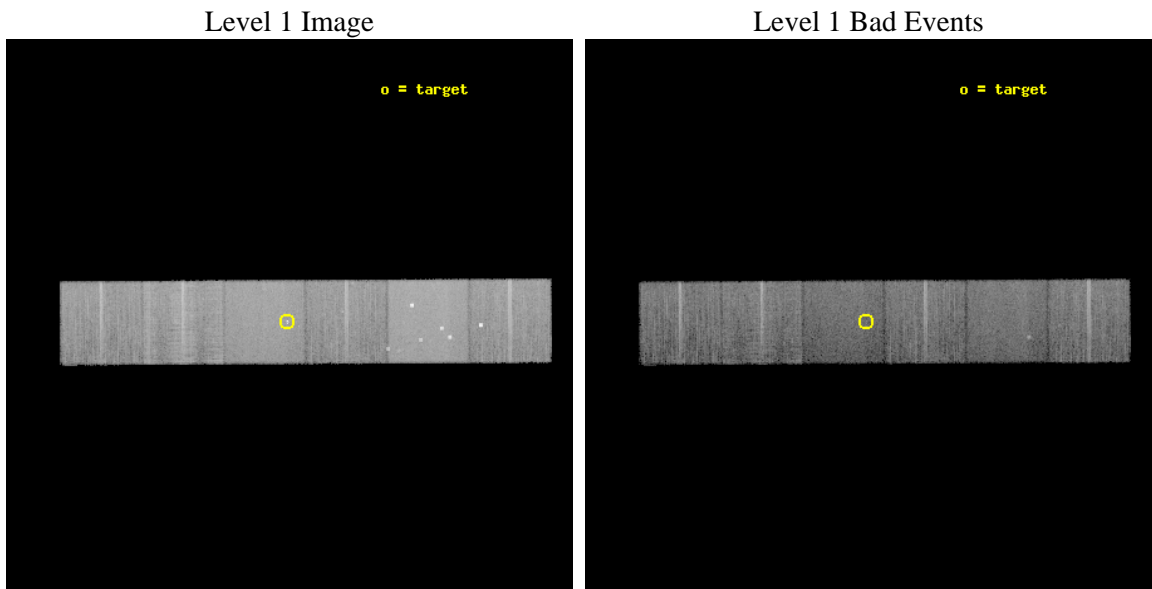
seq_num	200677	Sequence number
obs_id	12341	Observation id
title	Making planetary transits visible in X-rays	Proposal title
observer	Dr. Katja Poppenhaeager	Principal investigator
object	HD 189733	Source name
dtcycle	0	
cycle	P	events from which exps? Prim/Second/Both
ra_targ	300.182083	Observer's specified target RA [deg]
dec_targ	22.710111	Observer's specified target Dec [deg]
ra_nom	300.17760443419	Nominal RA [deg]
dec_nom	22.707595722886	Nominal Dec [deg]
roll_nom	179.67725318895	Nominal Roll [deg]
revision	2	Processing version of data
ontime	20051.199925363	Sum of GTIs [s]
livetime	19797.299558525	Livetime [s]
ontime4	20051.199925363	Sum of GTIs [s]
ontime5	20051.199925363	Sum of GTIs [s]
ontime6	20051.199925363	Sum of GTIs [s]
ontime7	20051.199925363	Sum of GTIs [s]
ontime8	20047.958895147	Sum of GTIs [s]
ontime9	20051.199925363	Sum of GTIs [s]
l2events	208944	Number of level 2 events



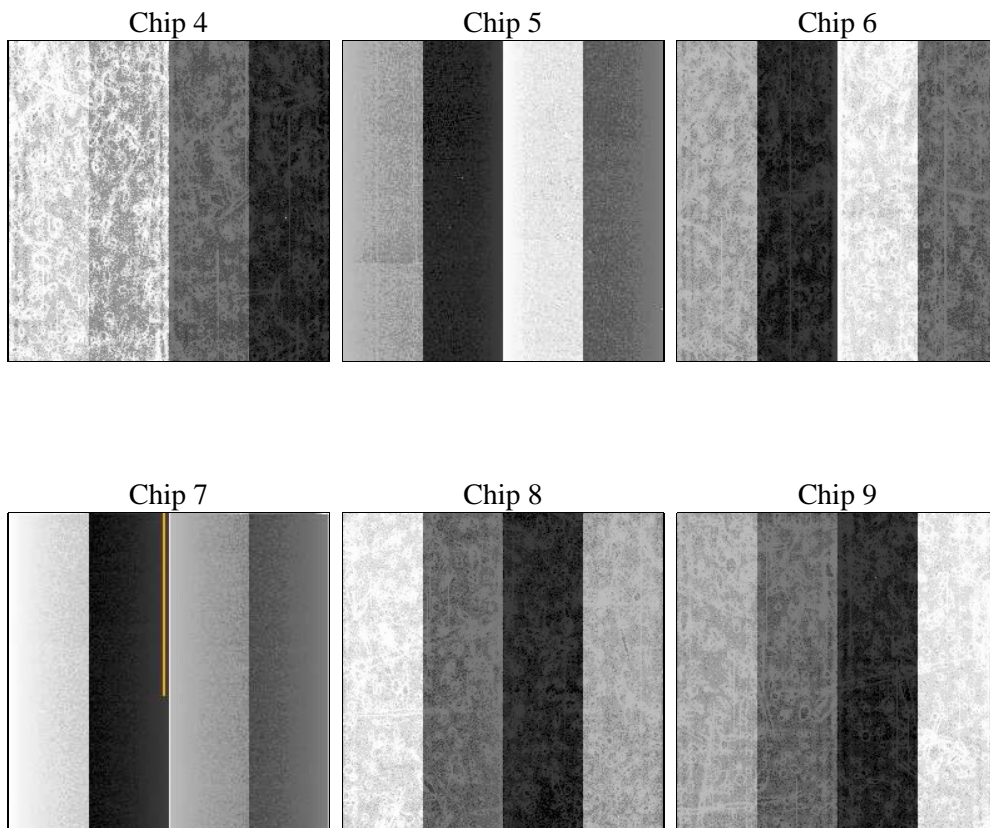
2 OBI

2.1 OBI

2.1.1 Images



2.1.2 Bias



2.1.3 Parameters

obi_num	1	Obi number	sched_exp_time	20000.000000	[s] Scheduled observation exposure time
ascdsver	8.4.3	Processing system revision	ontime	20051.199925363	Sum of GTIs [s]
caldsver	4.4.8	 	ontime4	20051.199925363	Sum of GTIs [s]
date	2012-02-18T05:34:43	Date and time of file creation	ontime5	20051.199925363	Sum of GTIs [s]
revision	2	Processing version of data	ontime6	20051.199925363	Sum of GTIs [s]
			ontime7	20051.199925363	Sum of GTIs [s]
			ontime8	20047.958895147	Sum of GTIs [s]
			ontime9	20051.199925363	Sum of GTIs [s]
			l1events	895908	Number of level 1 events

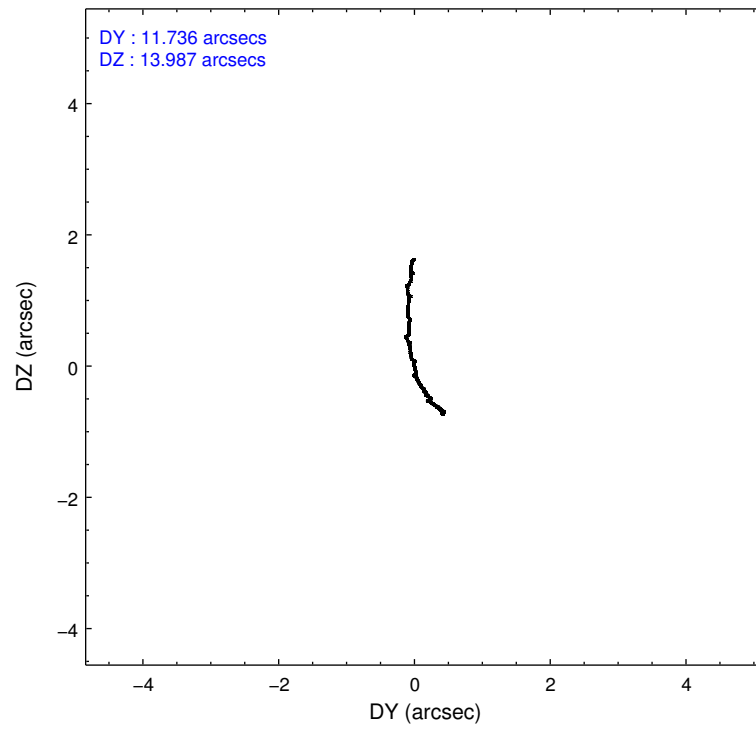
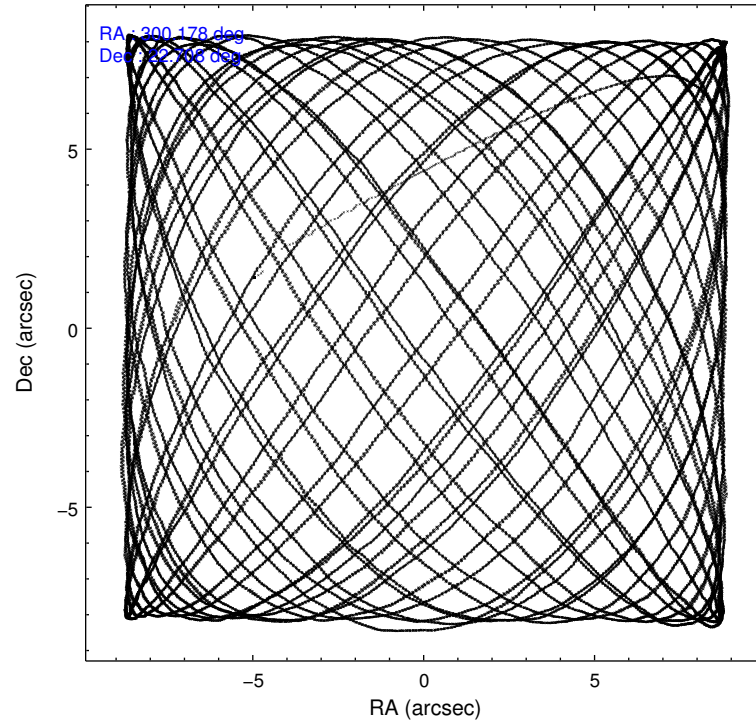
2.1.4 Events

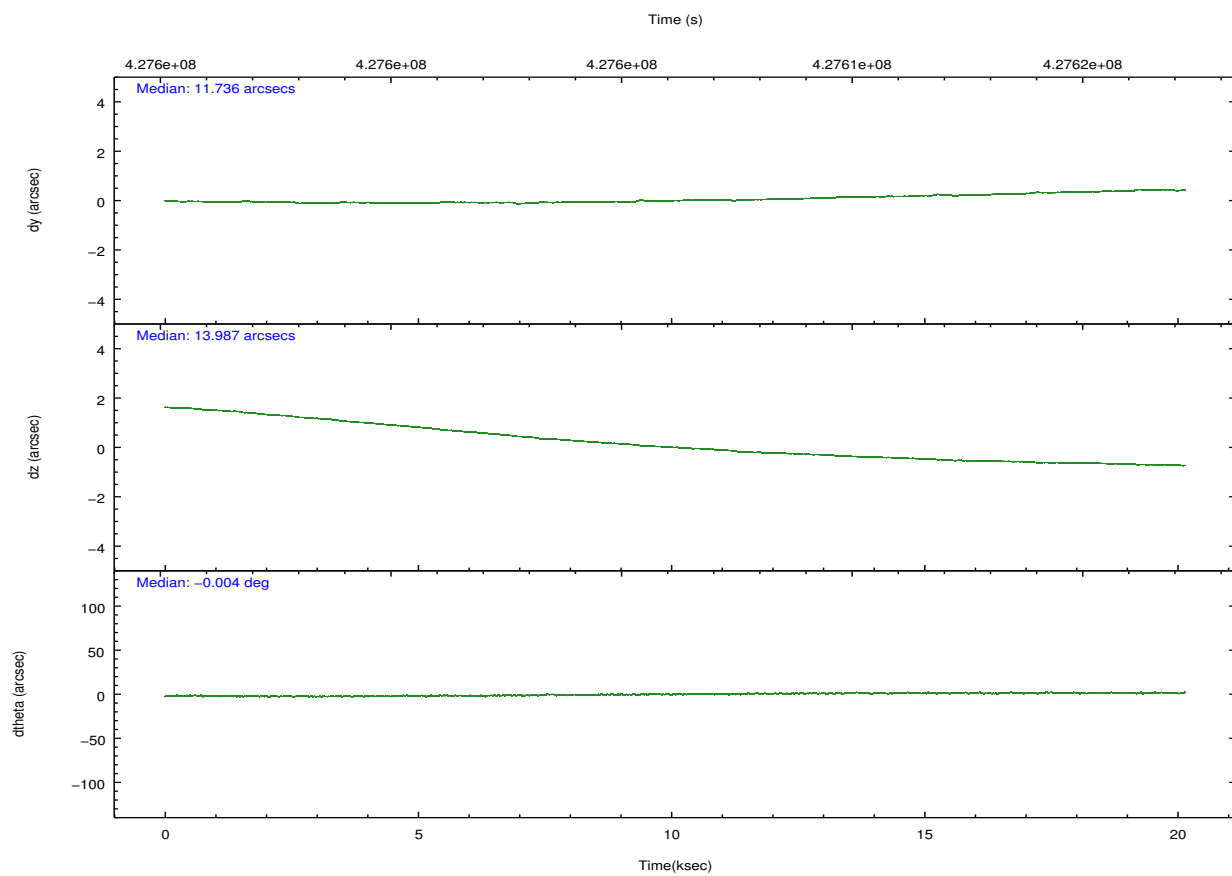
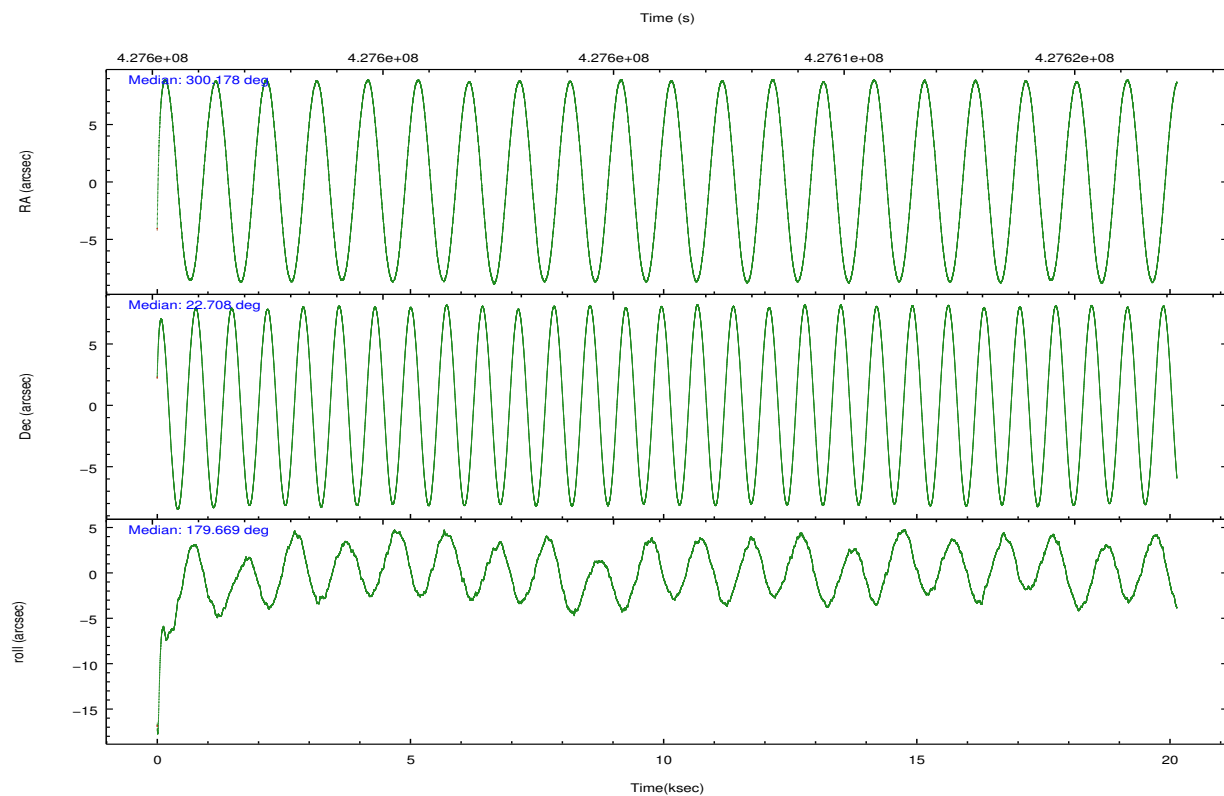
	ccd 4	ccd 5	ccd 6	ccd 7	ccd 8	ccd 9		ccd 4	ccd 5	ccd 6	ccd 7	ccd 8	ccd 9
level 1 events	139292	198754	121129	155983	157189	123561	grade 0 events	10426	14145	5044	6852	12227	5688
rejected events	119391	98889	106836	85364	115328	108250		7%	7%	4%	4%	7%	4%
rejected %	85%	49%	88%	54%	73%	87%	grade 1 events	184	342	64	178	143	74
								0%	0%	0%	0%	0%	0%
							grade 2 events	3658	29155	3223	14454	10027	3357
								2%	14%	2%	9%	6%	2%
							grade 3 events	1612	3500	1449	6199	4293	1593
								1%	1%	1%	3%	2%	1%
							grade 4 events	1553	3211	1430	6160	3979	1517
								1%	1%	1%	3%	2%	1%
							grade 5 events	5915	14333	5800	16275	8509	6449
								4%	7%	4%	10%	5%	5%
							grade 6 events	2658	49878	3153	36968	11339	3163
								1%	25%	2%	23%	7%	2%
							grade 7 events	113286	84190	100966	68897	106672	101720
								81%	42%	83%	44%	67%	82%

2.2 Compared Parameters

Parameter	Planned	Actual	Parameter	Planned	Actual
Instrument	ACIS	ACIS	Obspar format version number	7	7
Detector	ACIS-456789	ACIS-456789	Obspar file type	PREDICTED	ACTUAL
Grating	NONE	NONE	Obspar update status	NONE	UPDATED
Data mode	FAINT	FAINT	CCD I0 on	N	N
Observation mode	POINTING	POINTING	CCD I1 on	N	N
[deg] Pointing RA	300.203141	300.1776044341868	CCD I2 on	N	N
[deg] Pointing Dec	22.721452	22.7075957228856	CCD I3 on	N	N
[deg] Pointing Roll	179.510772	179.6772531889458	CCD S0 on	O1	Y
[mm] SIM focus pos	-0.684267	-0.6828225247311905	CCD S1 on	O3	Y
[mm] SIM defocus	0	0.001444936568705701	CCD S2 on	O5	Y
[mm] SIM translation stage pos	-190.132523	-190.1400660498719	CCD S3 on	Y	Y
[mm] SIM translation stage offset	0	0.00754346686406393	CCD S4 on	O4	Y
Phase constraints	Y	Y	CCD S5 on	O2	Y
[d] Phase period	2.218573	2.218573	Number of optional ACIS chips dropped	0	0
[d] Phase epoch (MJD)	55563.490403	55563.490403	On-chip summing requested	N	N
Phase start	0.947800	0.947800	Subarray requested	NONE	NONE
Phase end	0.052200	0.052200	Alternating exposures requested	N	N
Phase start error	0.010400	0.010400	[s] Primary exposure time	0.000000	3.2
Phase end error	0.010400	0.010400			
[s] Observation start time (MET)	427596232.184000	427595062.95149			
Observation start date	2011-07-21T00:42:46	2011-07-21T00:24:22			
[s] Observation end time (MET)	427616232.184000	427617330.05266			
Observation end date	2011-07-21T06:16:06	2011-07-21T06:35:30			
Read mode	TIMED	TIMED			

2.3 Aspect



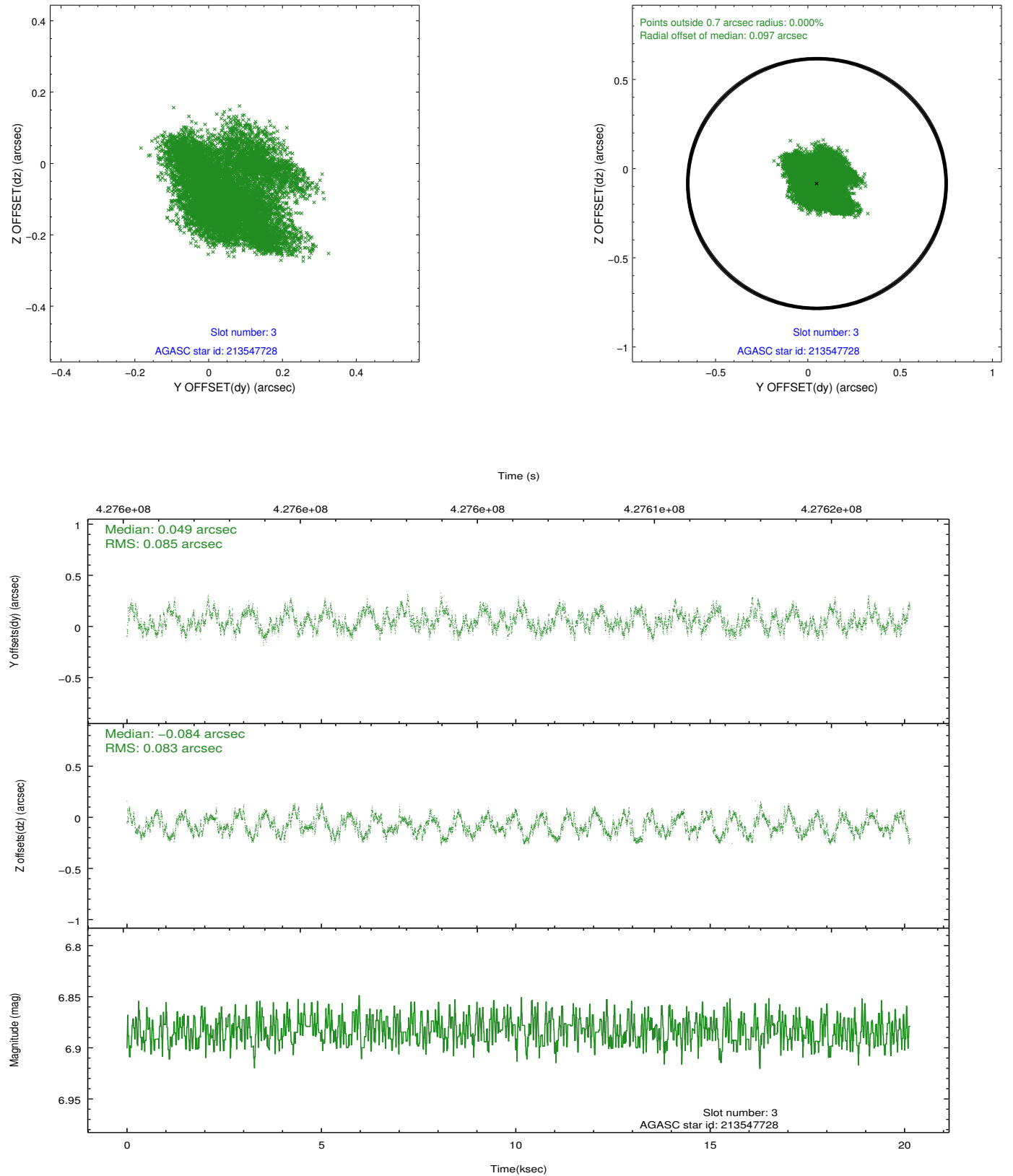


Slot Statistics

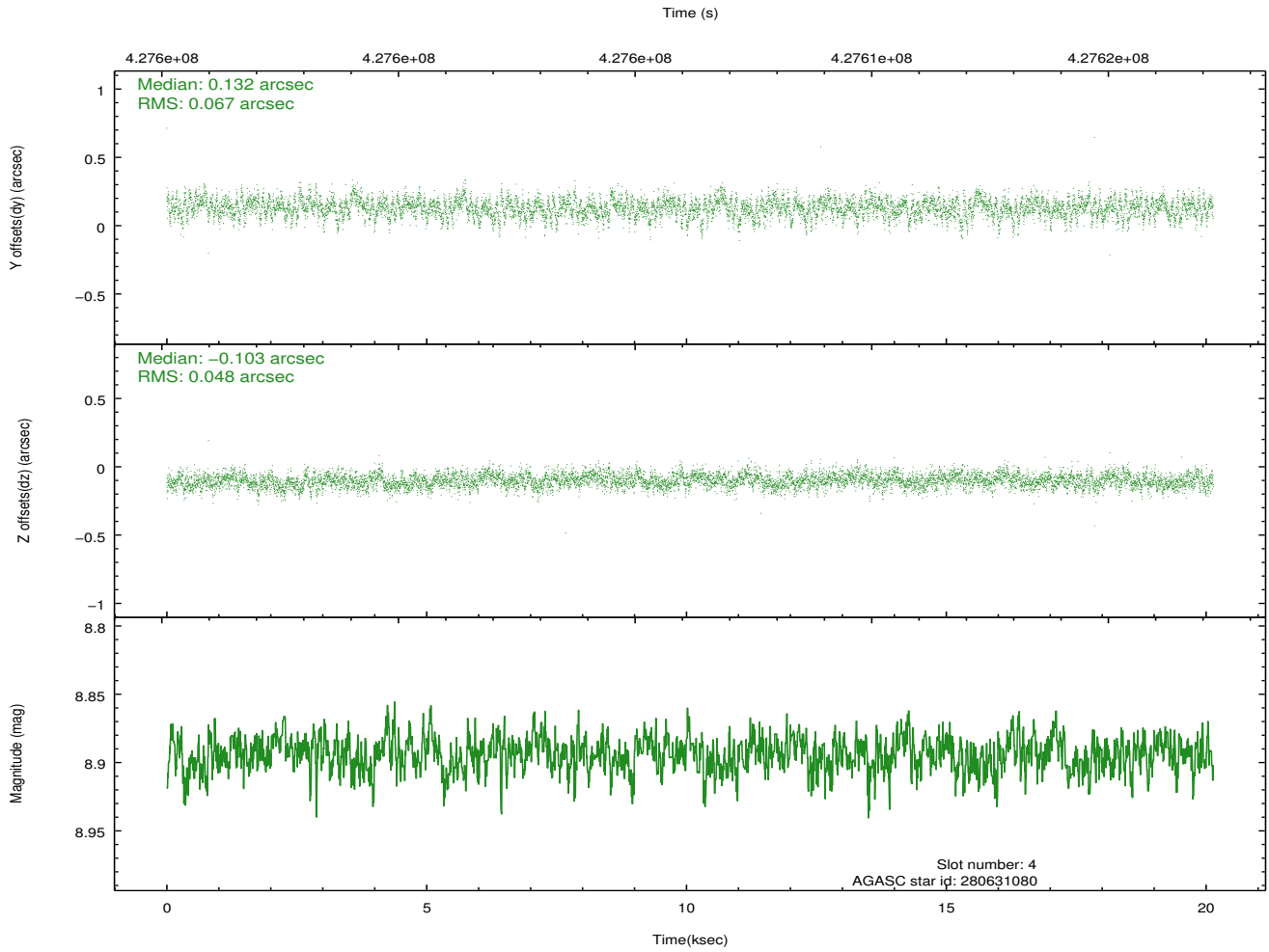
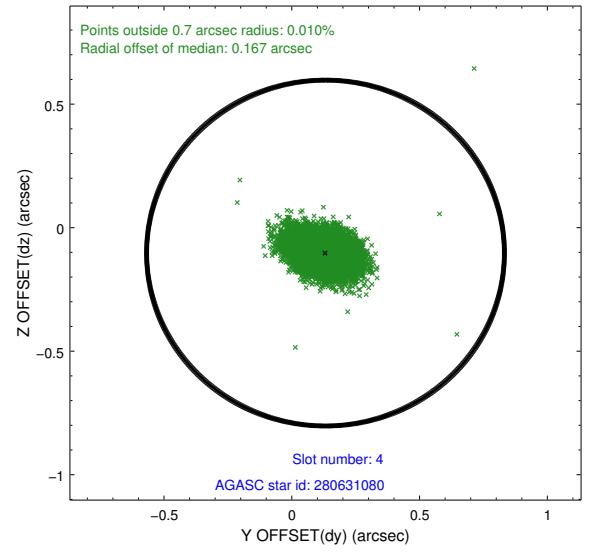
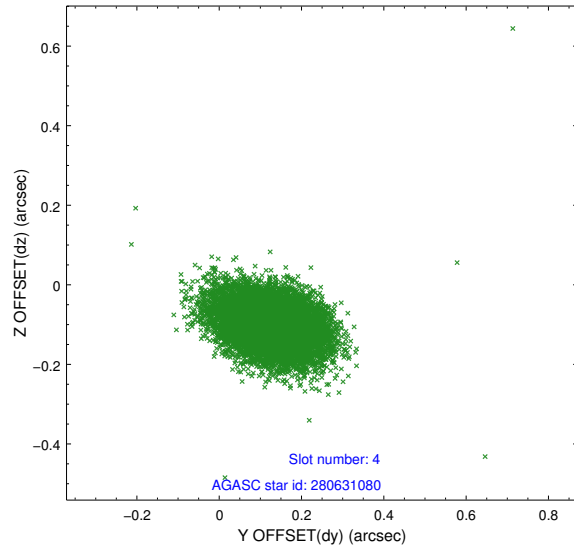
slot	status	id	mag	n_pts	med_dy	med_dz	dr1	dr2	ra	dec	mean_y	mean_z
0	FID	ACIS-S-2	6.89	4913	-0.046	-0.036	0.018	0.026	0.000000	0.000000	-764.74	-1735.56
1	FID	ACIS-S-4	6.97	4913	0.173	0.032	0.016	0.037	0.000000	0.000000	2148.68	172.79
2	FID	ACIS-S-5	7.01	4913	-0.163	0.013	0.015	0.023	0.000000	0.000000	-1817.45	166.66
3	GUIDE	213547728	6.88	9825	0.049	-0.084	0.131	0.196	300.592091	22.151462	-1314.22	2039.15
4	GUIDE	280631080	8.89	9820	0.132	-0.103	0.084	0.144	299.578484	23.303541	2083.86	-2081.75
5	GUIDE	280632896	9.05	9823	-0.280	0.087	0.085	0.139	299.532468	22.850727	2229.18	-451.13
6	GUIDE	280640784	9.10	9819	0.150	-0.005	0.091	0.146	300.454026	22.565622	-838.18	553.11
7	GUIDE	280632480	7.98	9823	-0.052	0.104	0.093	0.143	300.237301	22.846979	-109.23	-452.59

2.4 Star Slots

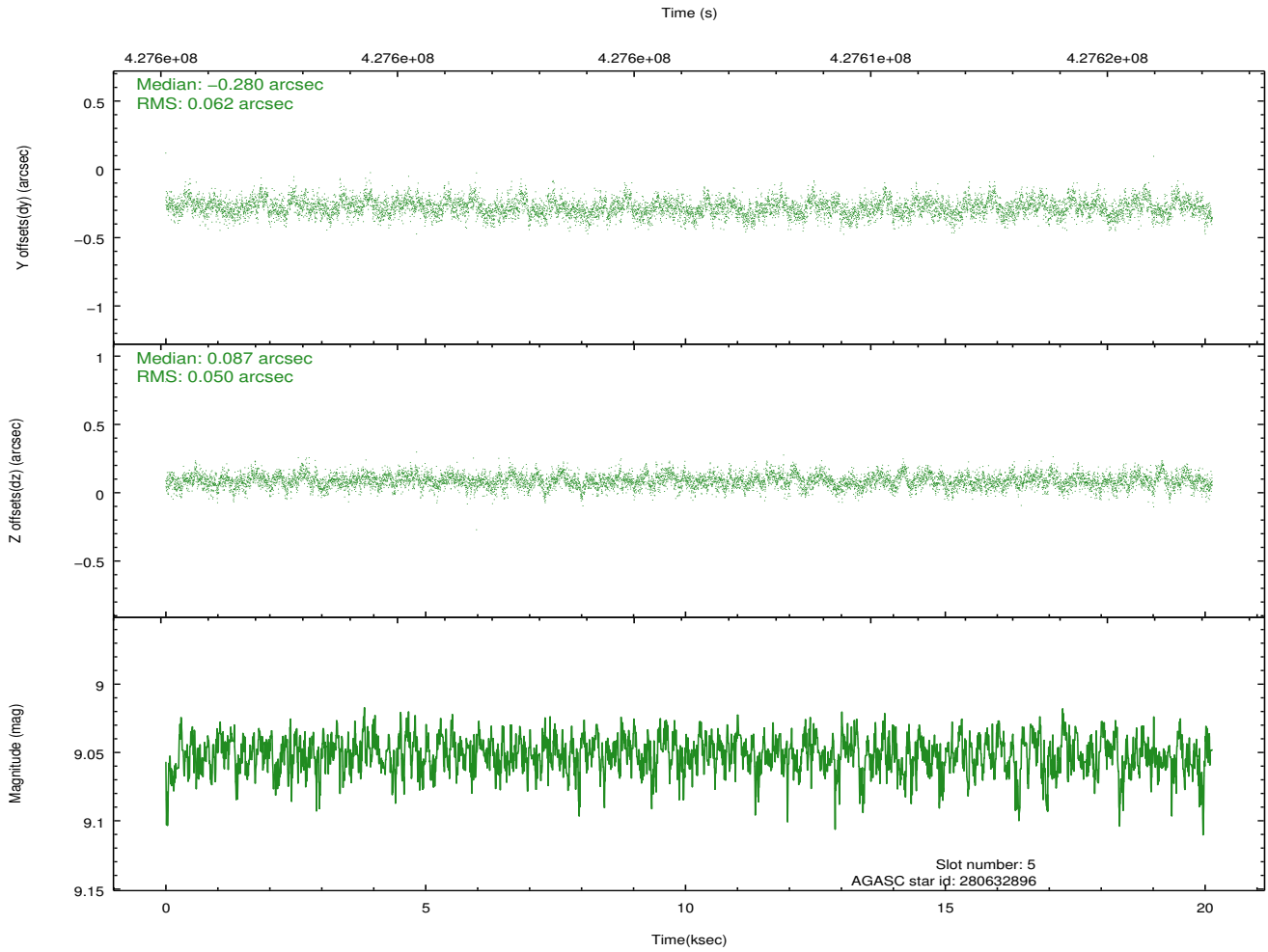
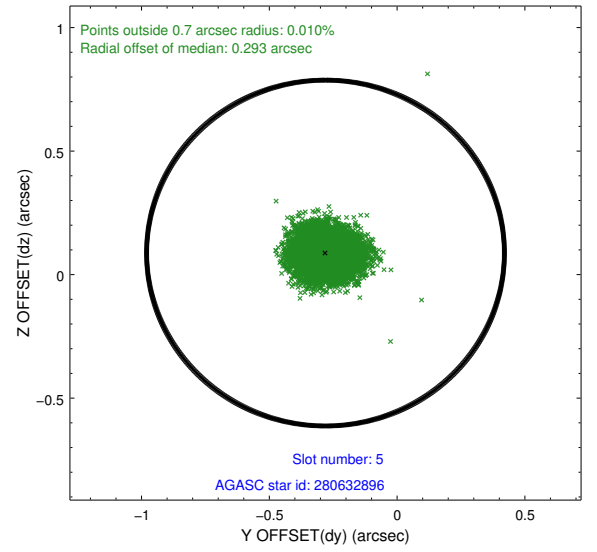
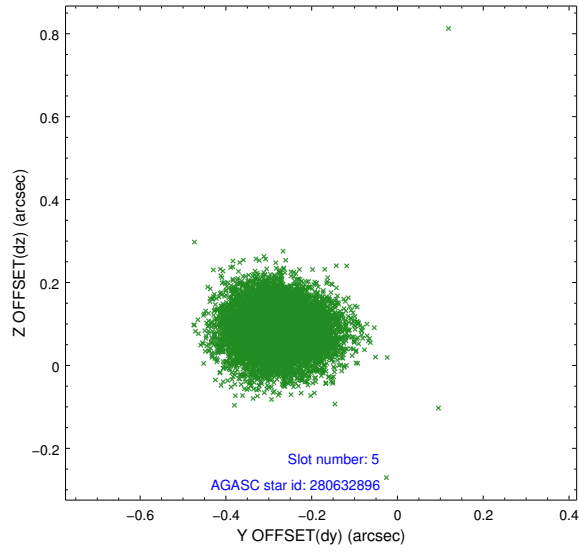
2.4.1 Slot 3



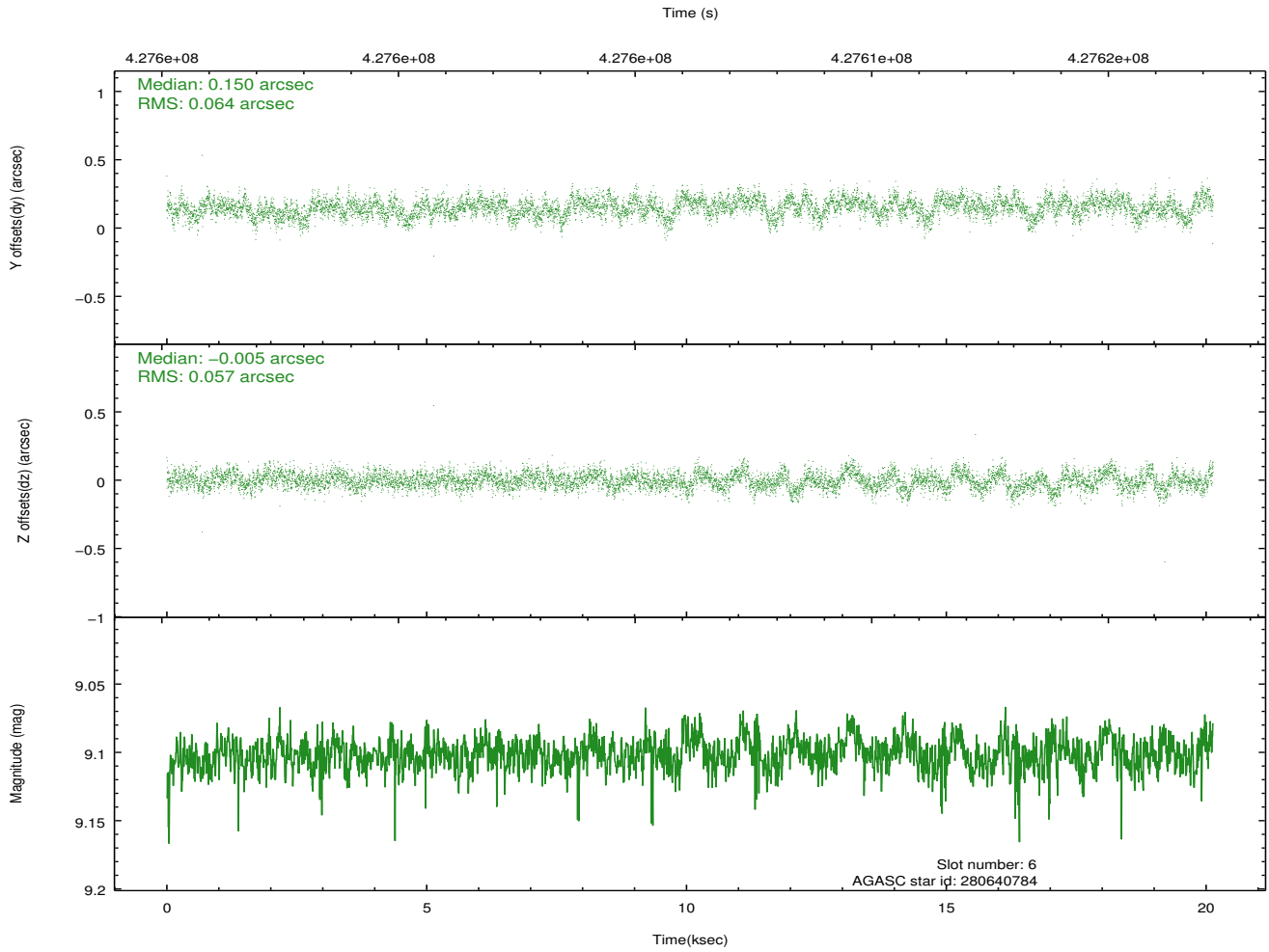
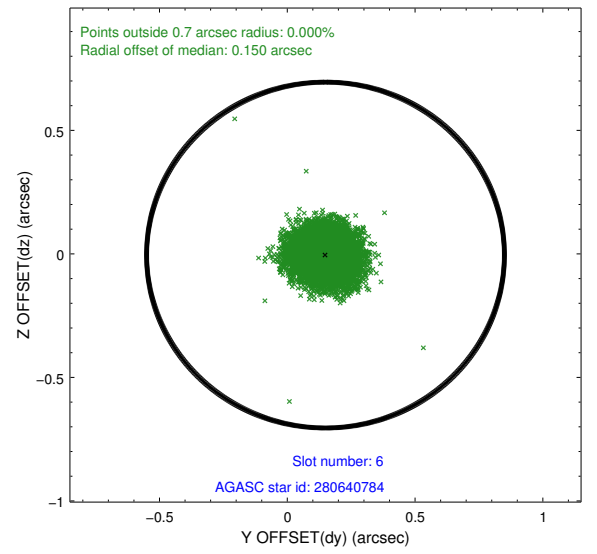
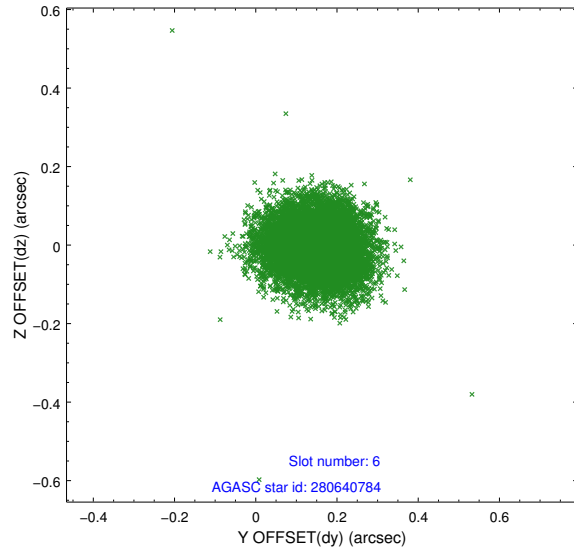
2.4.2 Slot 4



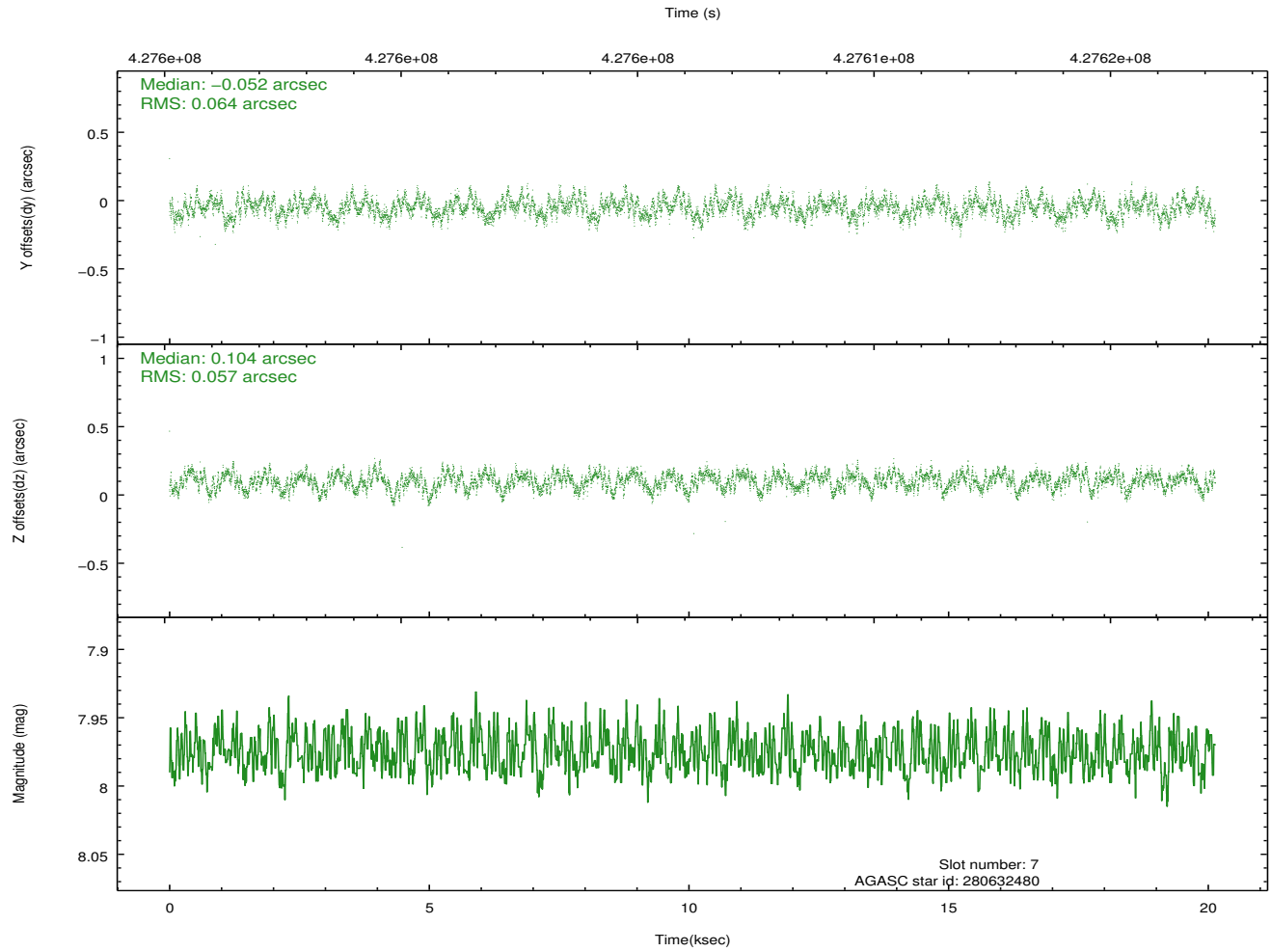
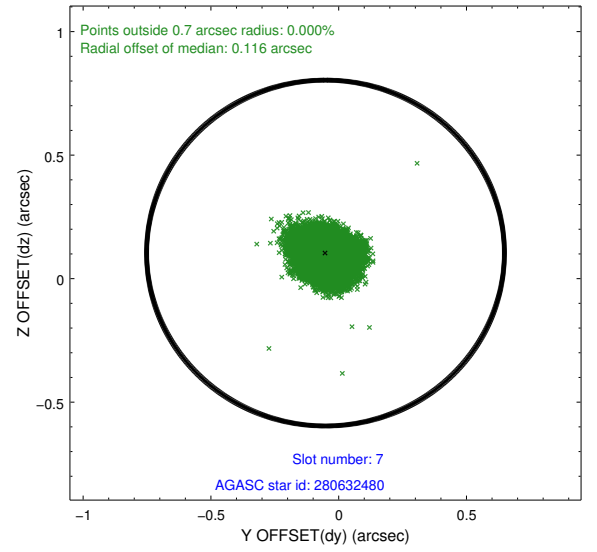
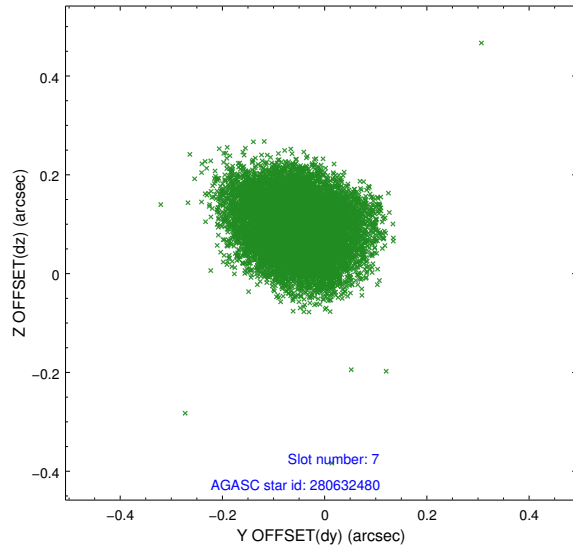
2.4.3 Slot 5



2.4.4 Slot 6

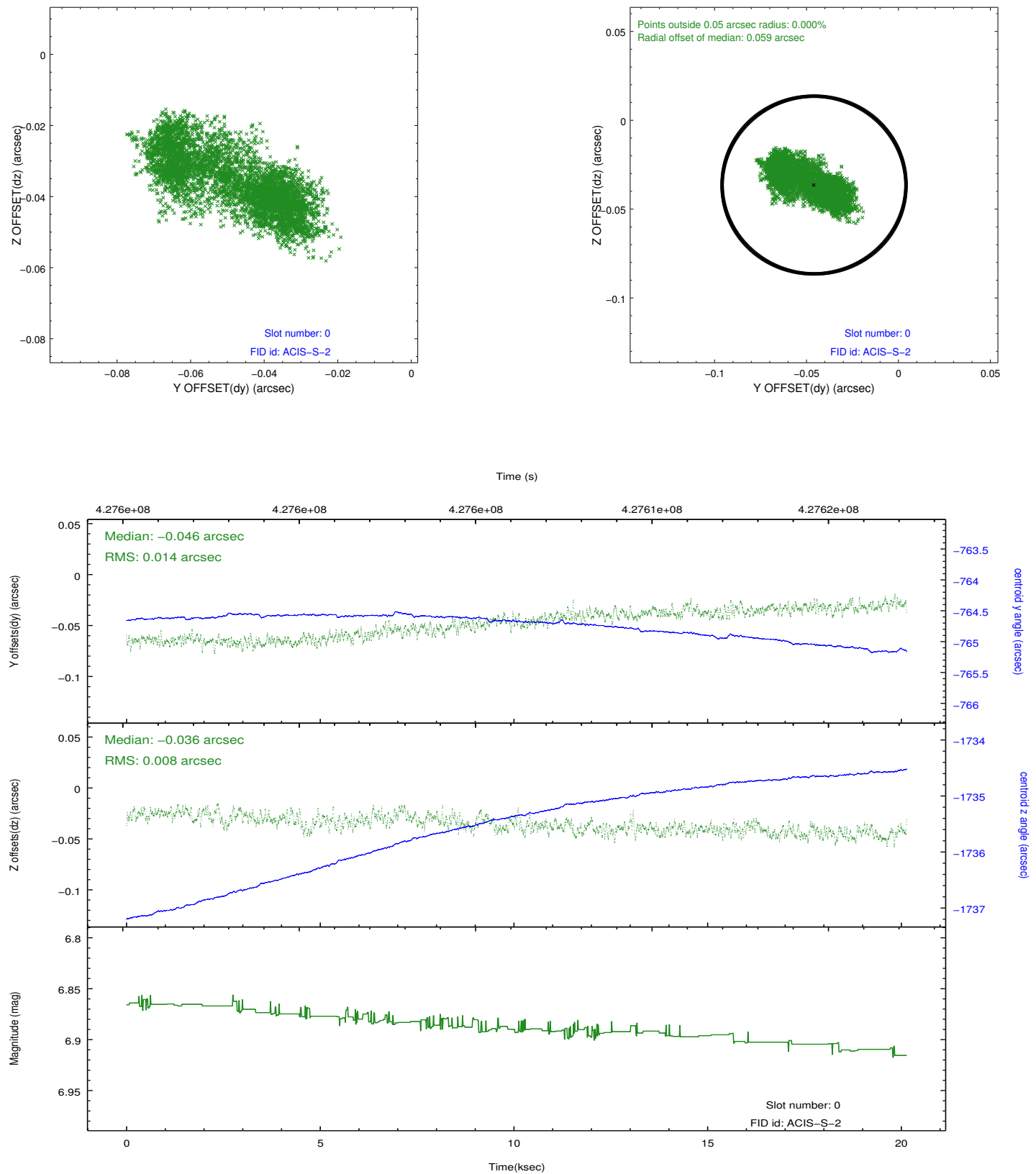


2.4.5 Slot 7

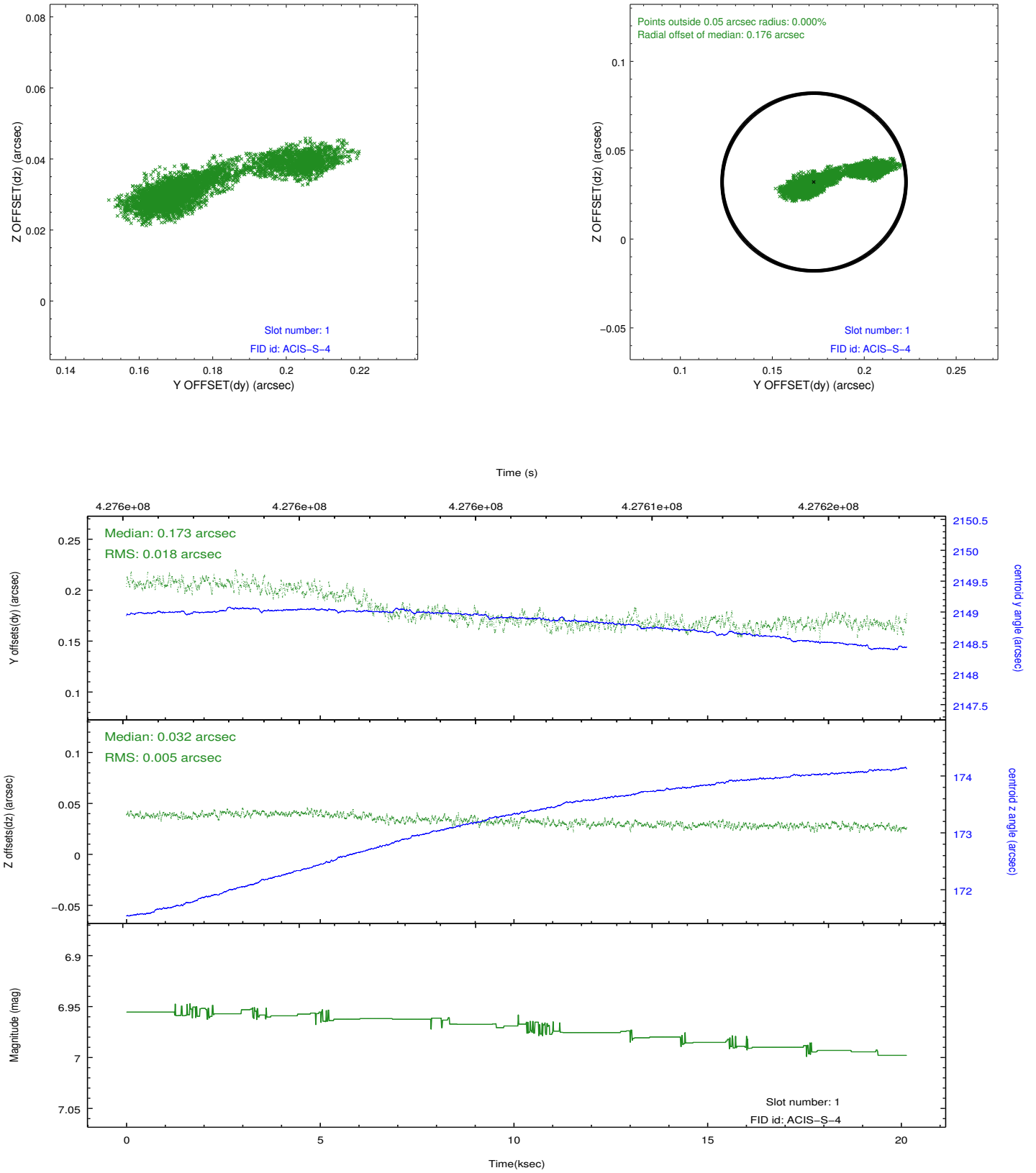


2.5 FID Slots

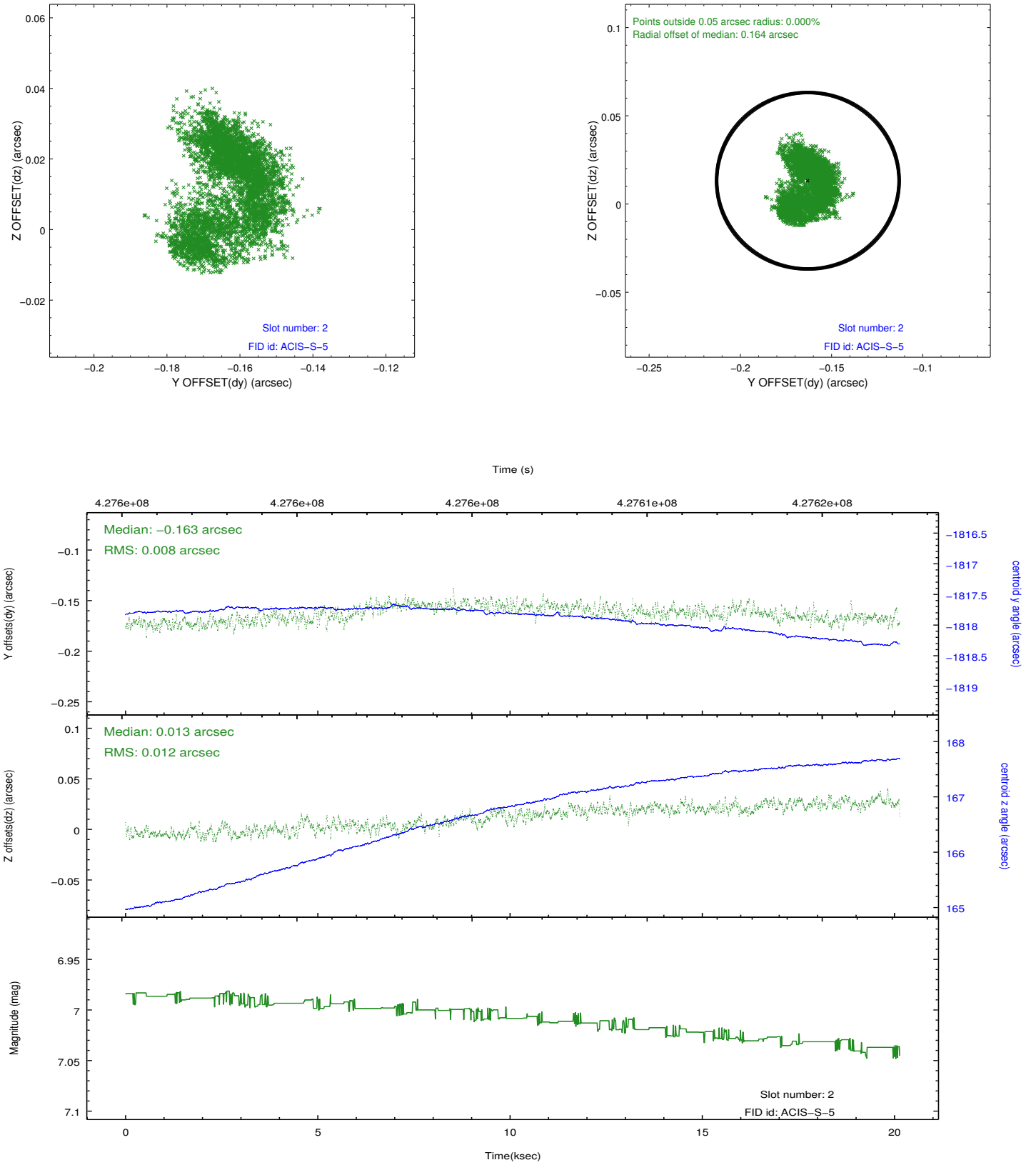
2.5.1 Slot 0



2.5.2 Slot 1



2.5.3 Slot 2



A Summary

A.1 Status

V&V Scientist	Jen Lauer
V&V Date (YYYY-MM-DD)	2012.02.21
V&V Edition	1
V&V Disposition and Status	OK
V&V Charge Time	20.051199925363

A.2 Comments

Monitor constraint met, follows obs12345 by 2 days. Phase constraint met.