

V&V Reference Report

L2 ASCDS Version : 8.4.5

Observation 12025 - L2 Version 2
Chandra X-Ray Center

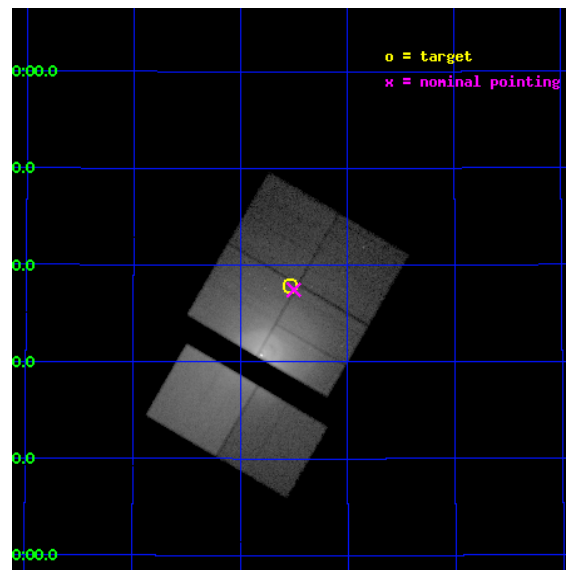
L2 Processing Date : Jun 17 2012

Contents

1	Front	2
2	OBI	3
2.1	OBI	3
2.1.1	Images	3
2.1.2	Bias	3
2.1.3	Parameters	4
2.1.4	Events	4
2.2	Compared Parameters	5
2.3	Aspect	6
2.4	Star Slots	9
2.4.1	Slot 3	9
2.4.2	Slot 4	10
2.4.3	Slot 5	11
2.4.4	Slot 6	12
2.4.5	Slot 7	13
2.5	FID Slots	14
2.5.1	Slot 0	14
2.5.2	Slot 1	15
2.5.3	Slot 2	16
A	Summary	17
A.1	Status	17
A.2	Comments	17

1 Front

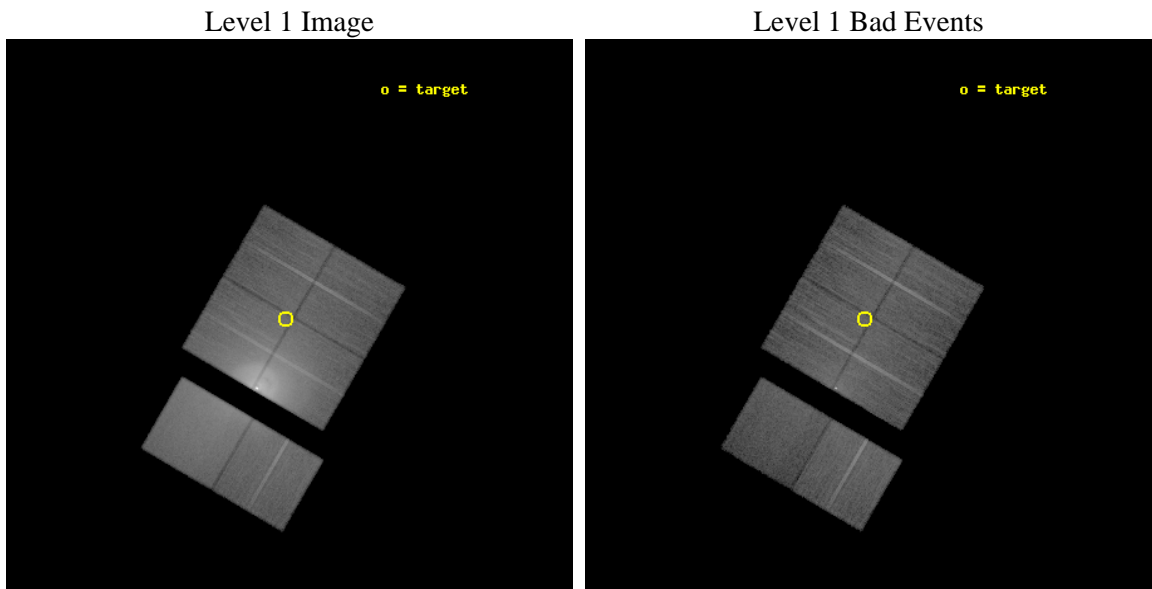
seq_num	800855	Sequence number
obs_id	12025	Observation id
title	Extending the Deep Image of the Perseus Cluster: The Outer Bubbles, Filaments and Ripples	Proposal title
observer	Professor Andrew Fabian	Principal investigator
object	Perseus cluster, Abell 426	Source name
dtcycle	0	
cycle	P	events from which exps? Prim/Second/Both
ra_targ	49.8825	Observer's specified target RA [deg]
dec_targ	41.630278	Observer's specified target Dec [deg]
ra_nom	49.875225739479	Nominal RA [deg]
dec_nom	41.624297105304	Nominal Dec [deg]
roll_nom	210.21348747295	Nominal Roll [deg]
revision	2	Processing version of data
ontime	18163.199932396	Sum of GTIs [s]
livetime	17933.206558286	Livetime [s]
ontime0	18163.199932396	Sum of GTIs [s]
ontime1	18159.958922029	Sum of GTIs [s]
ontime2	18163.199932396	Sum of GTIs [s]
ontime3	18163.199932396	Sum of GTIs [s]
ontime6	18163.199932396	Sum of GTIs [s]
ontime7	18163.199932396	Sum of GTIs [s]
l2events	1046906	Number of level 2 events



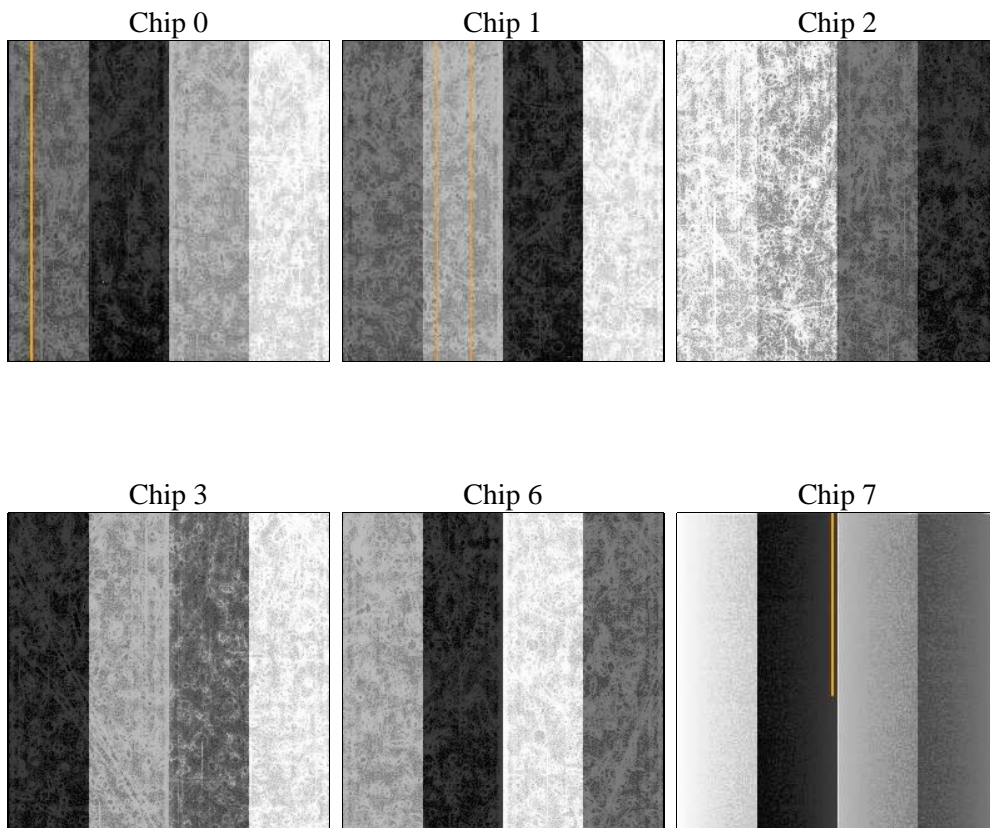
2 OBI

2.1 OBI

2.1.1 Images



2.1.2 Bias



2.1.3 Parameters

obi_num	1	Obi number	sched_exp_time	18000.000000	[s] Scheduled observation exposure time
ascdsver	8.4.5	Processing system revision	ontime	18163.199932396	Sum of GTIs [s]
caldsver	4.4.10	 	ontime0	18163.199932396	Sum of GTIs [s]
date	2012-06-17T05:57:04	Date and time of file creation	ontime1	18159.958922029	Sum of GTIs [s]
revision	2	Processing version of data	ontime2	18163.199932396	Sum of GTIs [s]
			ontime3	18163.199932396	Sum of GTIs [s]
			ontime6	18163.199932396	Sum of GTIs [s]
			ontime7	18163.199932396	Sum of GTIs [s]
			l1events	1950328	Number of level 1 events

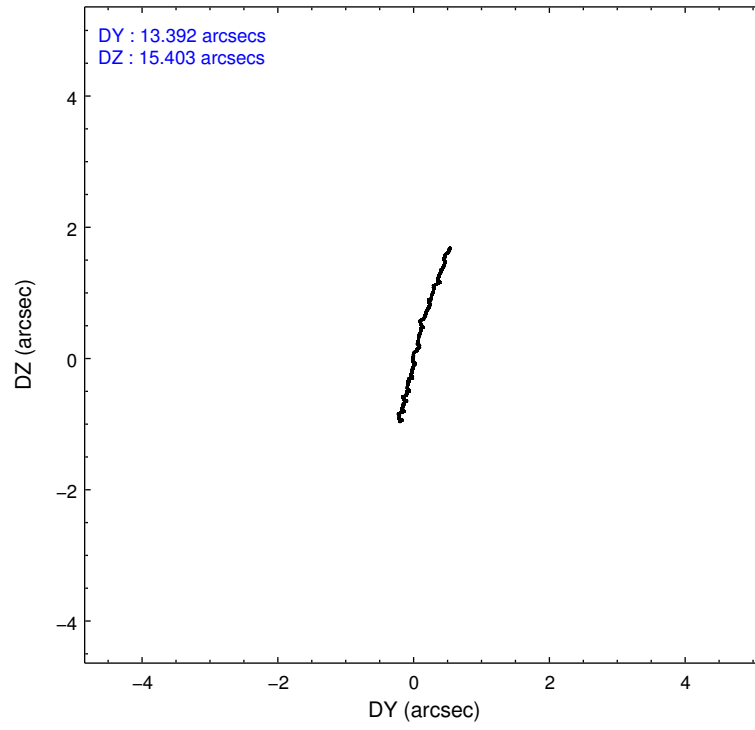
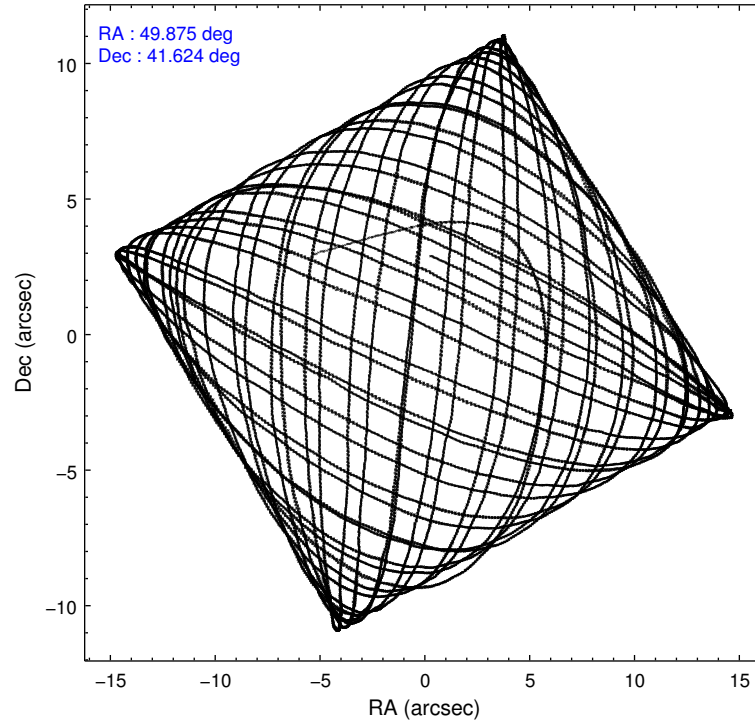
2.1.4 Events

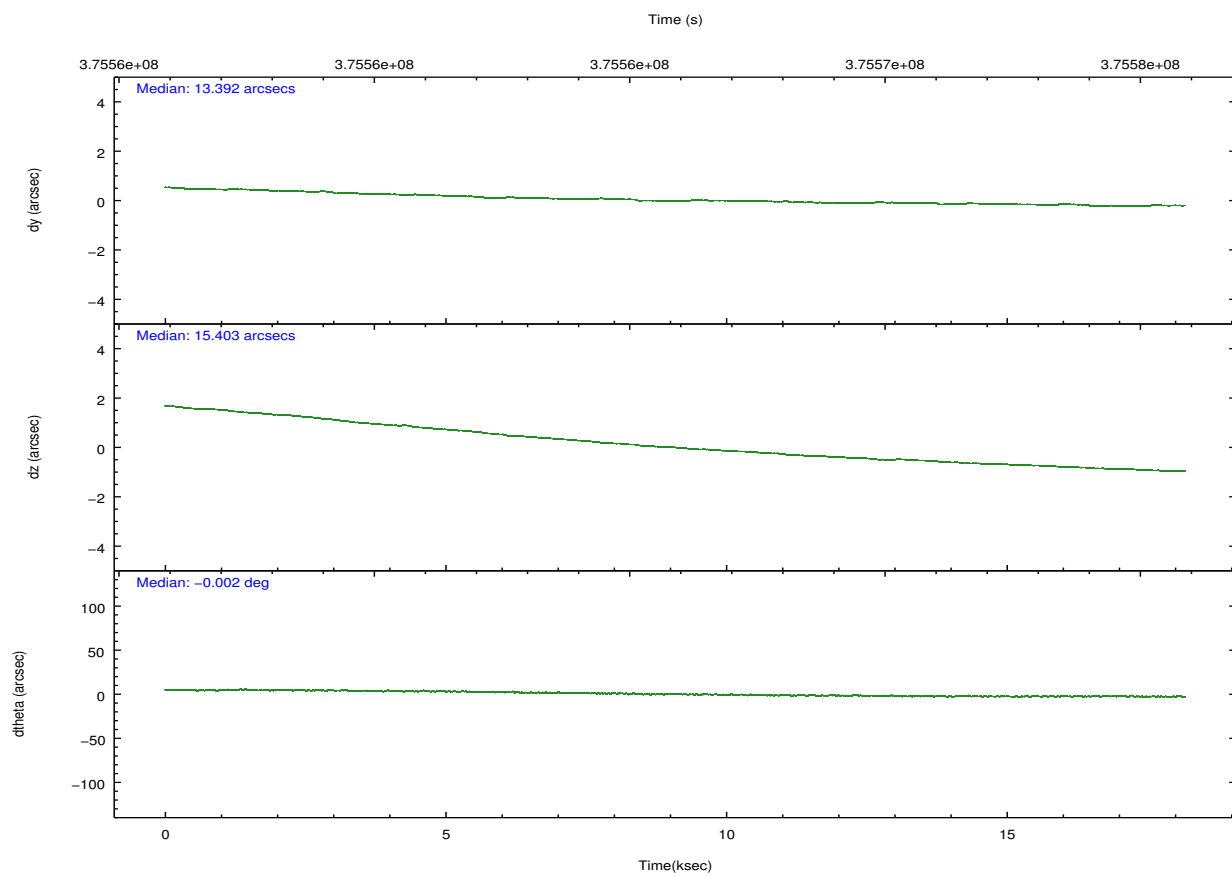
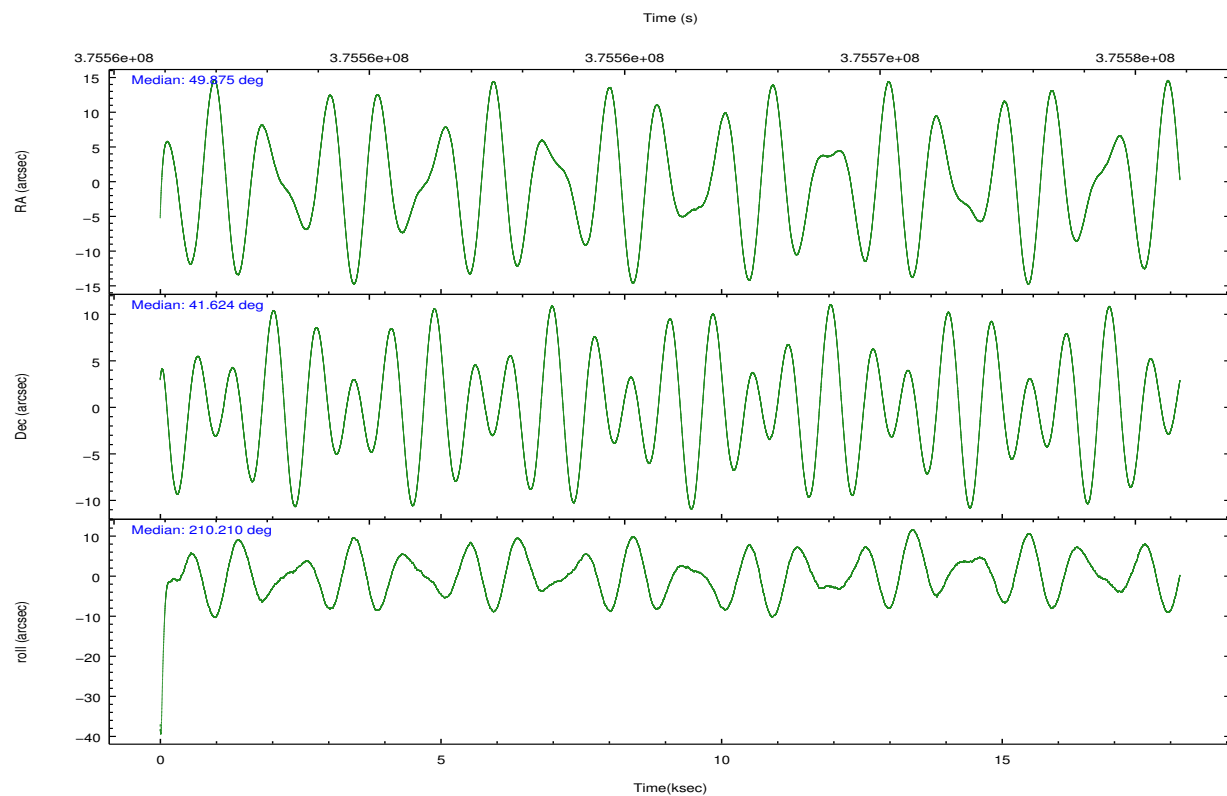
	ccd 0	ccd 1	ccd 2	ccd 3	ccd 6	ccd 7		ccd 0	ccd 1	ccd 2	ccd 3	ccd 6	ccd 7
level 1 events	180413	183835	565652	432592	233594	354242	grade 0 events	32256	30327	321948	222036	57399	53388
rejected events	131410	136013	162251	151751	154019	107772		17%	16%	56%	51%	24%	15%
rejected %	72%	73%	28%	35%	65%	30%	grade 1 events	264	243	3409	1667	434	314
								0%	0%	0%	0%	0%	0%
							grade 2 events	7451	7631	42885	30932	10624	61587
								4%	4%	7%	7%	4%	17%
							grade 3 events	2956	2959	14239	10226	3796	27197
								1%	1%	2%	2%	1%	7%
							grade 4 events	2766	2974	14041	10109	3768	26603
								1%	1%	2%	2%	1%	7%
							grade 5 events	6137	6519	7741	8070	7467	20678
								3%	3%	1%	1%	3%	5%
							grade 6 events	4281	4669	13506	10055	5496	82780
								2%	2%	2%	2%	2%	23%
							grade 7 events	124302	128513	147883	139497	144610	81695
								68%	69%	26%	32%	61%	23%

2.2 Compared Parameters

Parameter	Planned	Actual	Parameter	Planned	Actual
Instrument	ACIS	ACIS	Obspar format version number	7	7
Detector	ACIS-012367	ACIS-012367	Obspar file type	PREDICTED	ACTUAL
Grating	NONE	NONE	Obspar update status	NONE	UPDATED
Data mode	FAINT	FAINT	CCD I0 on	Y	Y
Observation mode	POINTING	POINTING	CCD I1 on	Y	Y
[deg] Pointing RA	49.893348	49.87522573947911	CCD I2 on	Y	Y
[deg] Pointing Dec	41.648234	41.62429710530448	CCD I3 on	Y	Y
[deg] Pointing Roll	209.992787	210.2134874729496	CCD S0 on	N	N
[mm] SIM focus pos	-0.782348	-0.7809083437167272	CCD S1 on	N	N
[mm] SIM defocus	0	0.001439871863259334	CCD S2 on	O2	Y
[mm] SIM translation stage pos	-233.592463	-233.5874344608287	CCD S3 on	O1	Y
[mm] SIM translation stage offset	0	-0.005018542100998502	CCD S4 on	N	N
[s] Observation start time (MET)	375556966.184000	375555656.39088	CCD S5 on	N	N
Observation start date	2009-11-25T17:21:40	2009-11-25T17:00:56	Number of optional ACIS chips dropped	0	0
[s] Observation end time (MET)	375574966.184000	375575801.74189	On-chip summing requested	N	N
Observation end date	2009-11-25T22:21:40	2009-11-25T22:36:41	Subarray requested	NONE	NONE
Read mode	TIMED	TIMED	Alternating exposures requested	N	N
			[s] Primary exposure time	0.000000	3.2

2.3 Aspect



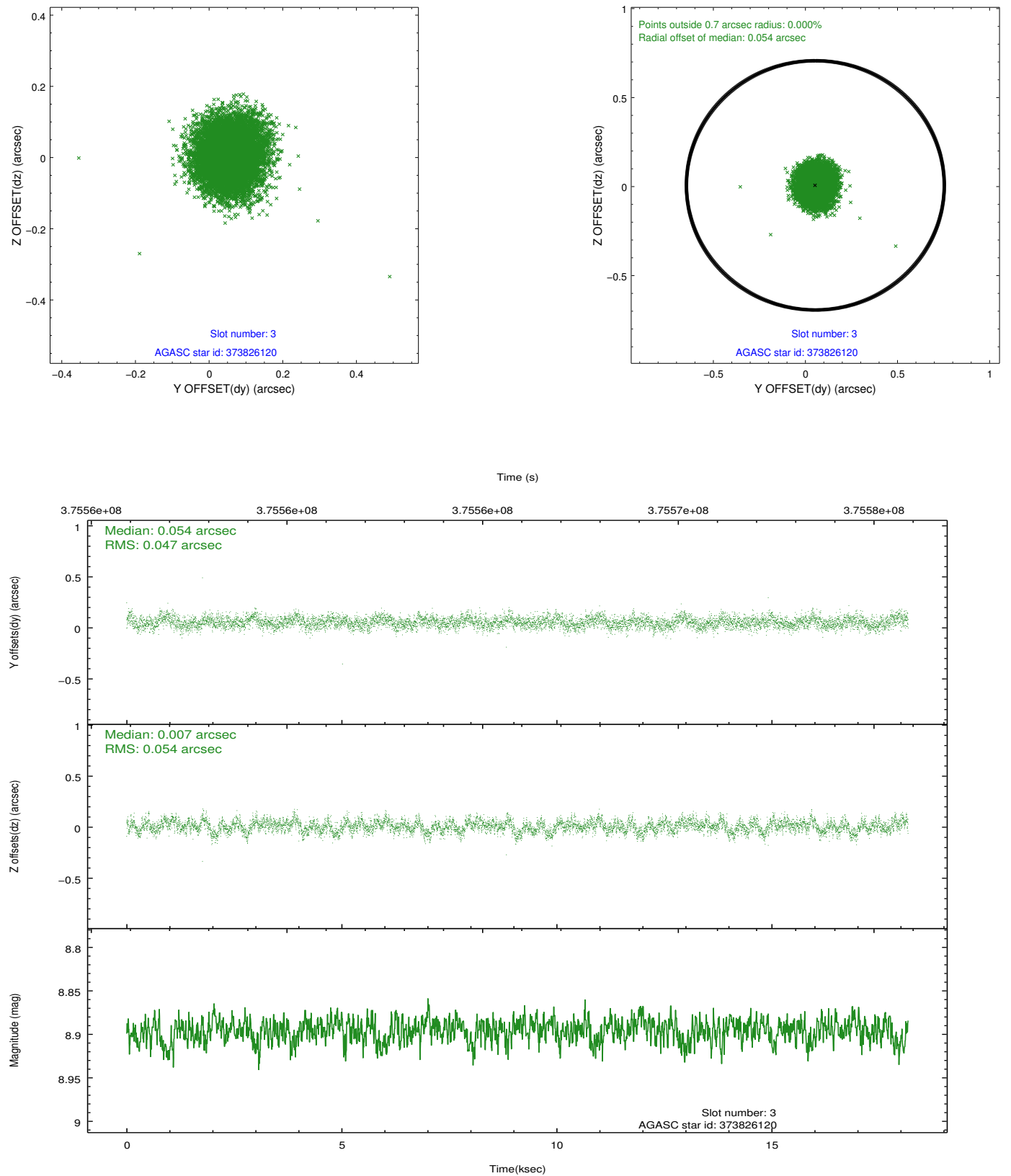


Slot Statistics

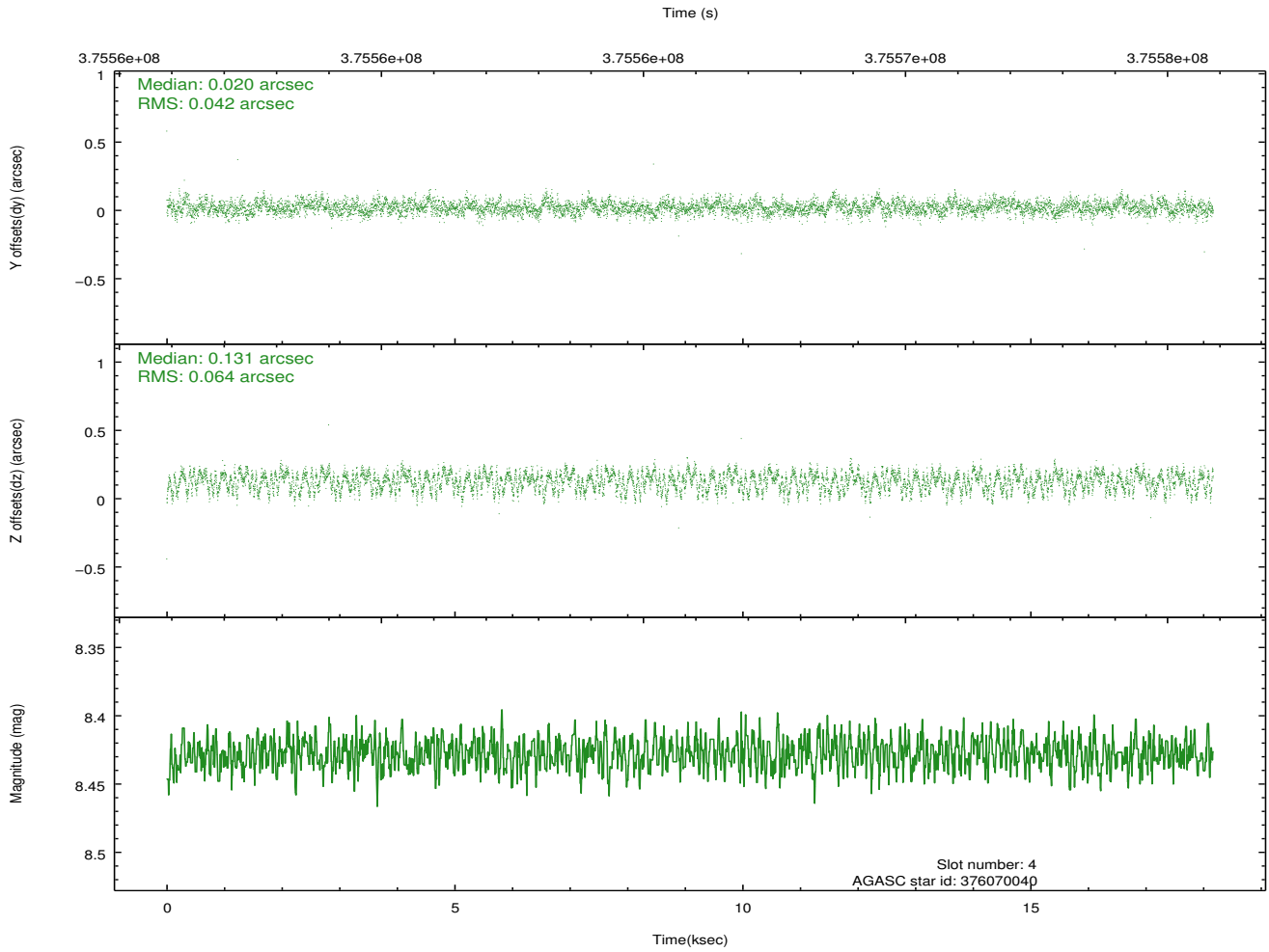
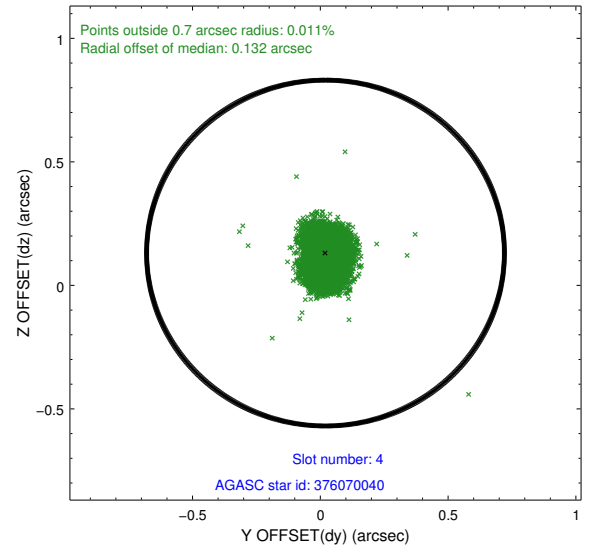
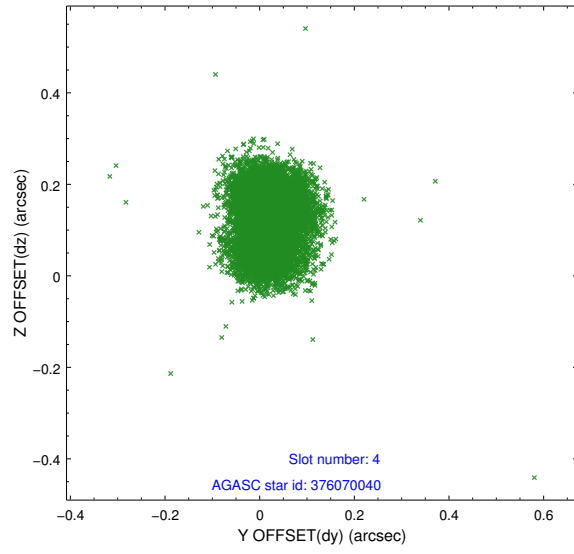
slot	status	id	mag	n_pts	med_dy	med_dz	dr1	dr2	ra	dec	mean_y	mean_z
0	FID	ACIS-I-1	7.01	4432	0.039	-0.024	0.040	0.049	0.000000	0.000000	926.09	-839.18
1	FID	ACIS-I-5	7.00	4432	-0.208	0.042	0.021	0.039	0.000000	0.000000	-1822.15	1058.26
2	FID	ACIS-I-6	7.00	4432	0.076	0.046	0.020	0.029	0.000000	0.000000	391.42	1703.02
3	GUIDE	373826120	8.90	8856	0.054	0.007	0.076	0.123	49.738165	41.186341	1195.47	1229.82
4	GUIDE	376070040	8.43	8859	0.020	0.131	0.082	0.130	50.072031	41.897206	-862.51	-536.88
5	GUIDE	373817952	8.74	8858	-0.089	-0.138	0.086	0.139	49.913424	40.978510	1158.01	2115.53
6	GUIDE	374357808	8.67	8860	0.027	0.066	0.082	0.131	49.921429	42.176083	-1014.39	-1607.88
7	GUIDE	376057824	8.33	8860	-0.013	-0.063	0.074	0.119	50.665569	41.926280	-2296.21	159.13

2.4 Star Slots

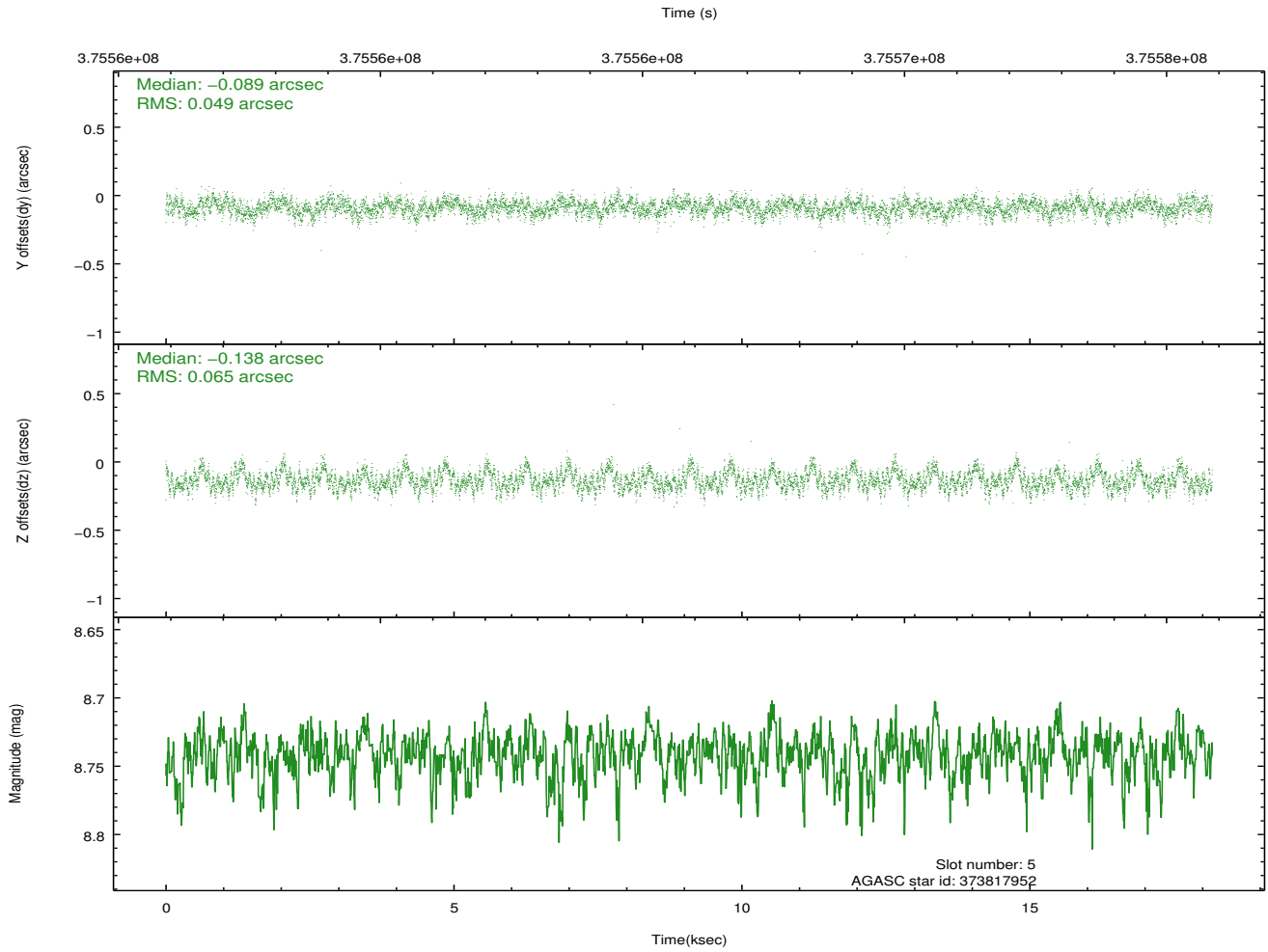
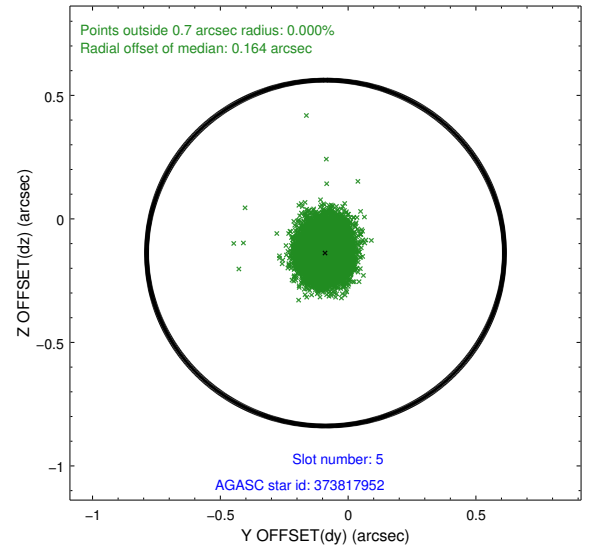
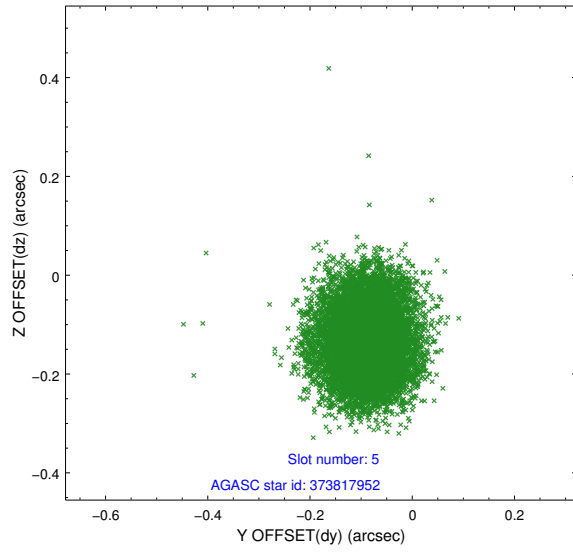
2.4.1 Slot 3



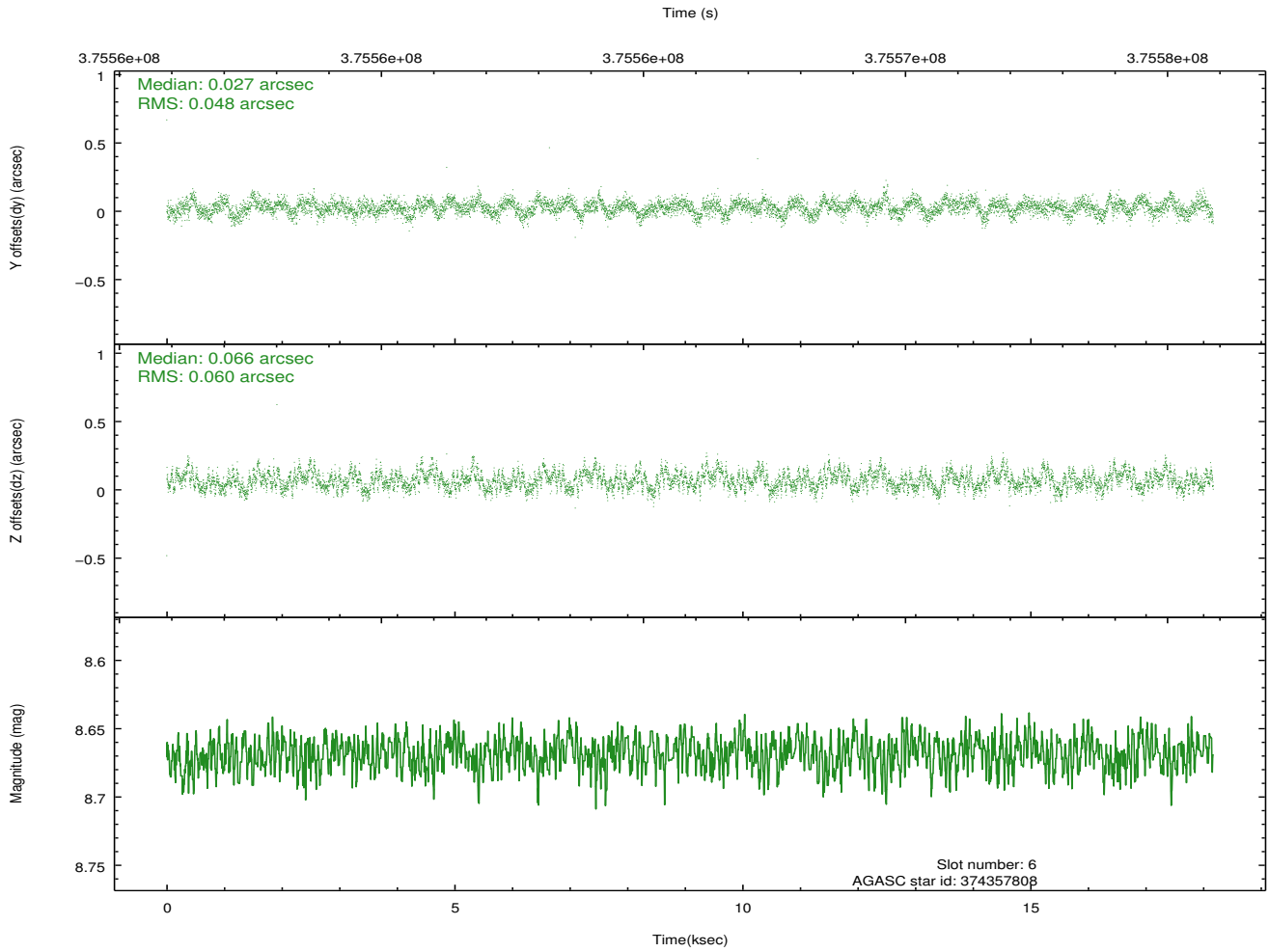
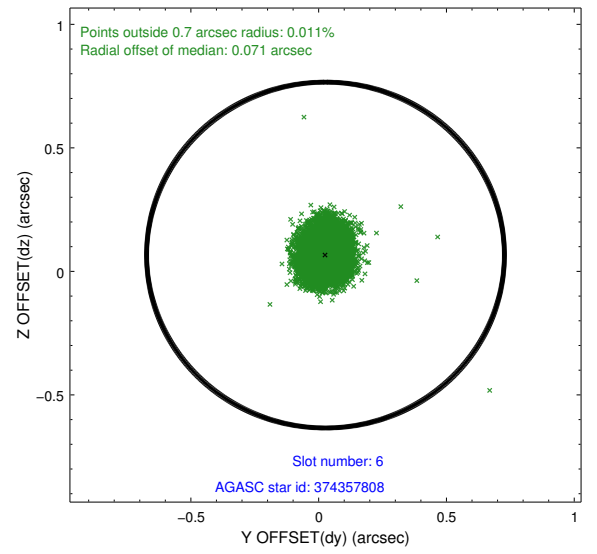
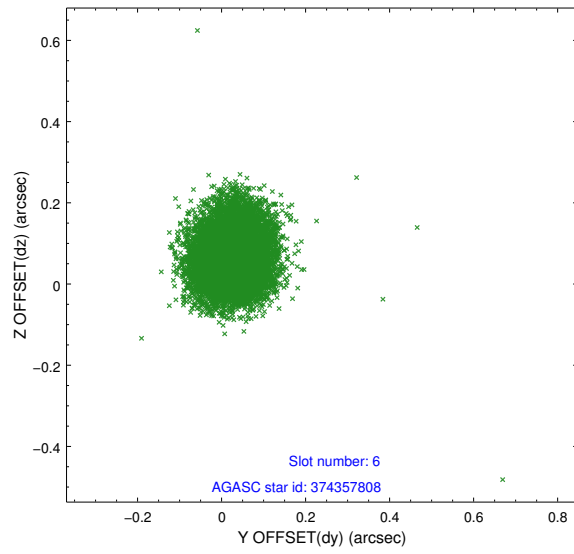
2.4.2 Slot 4



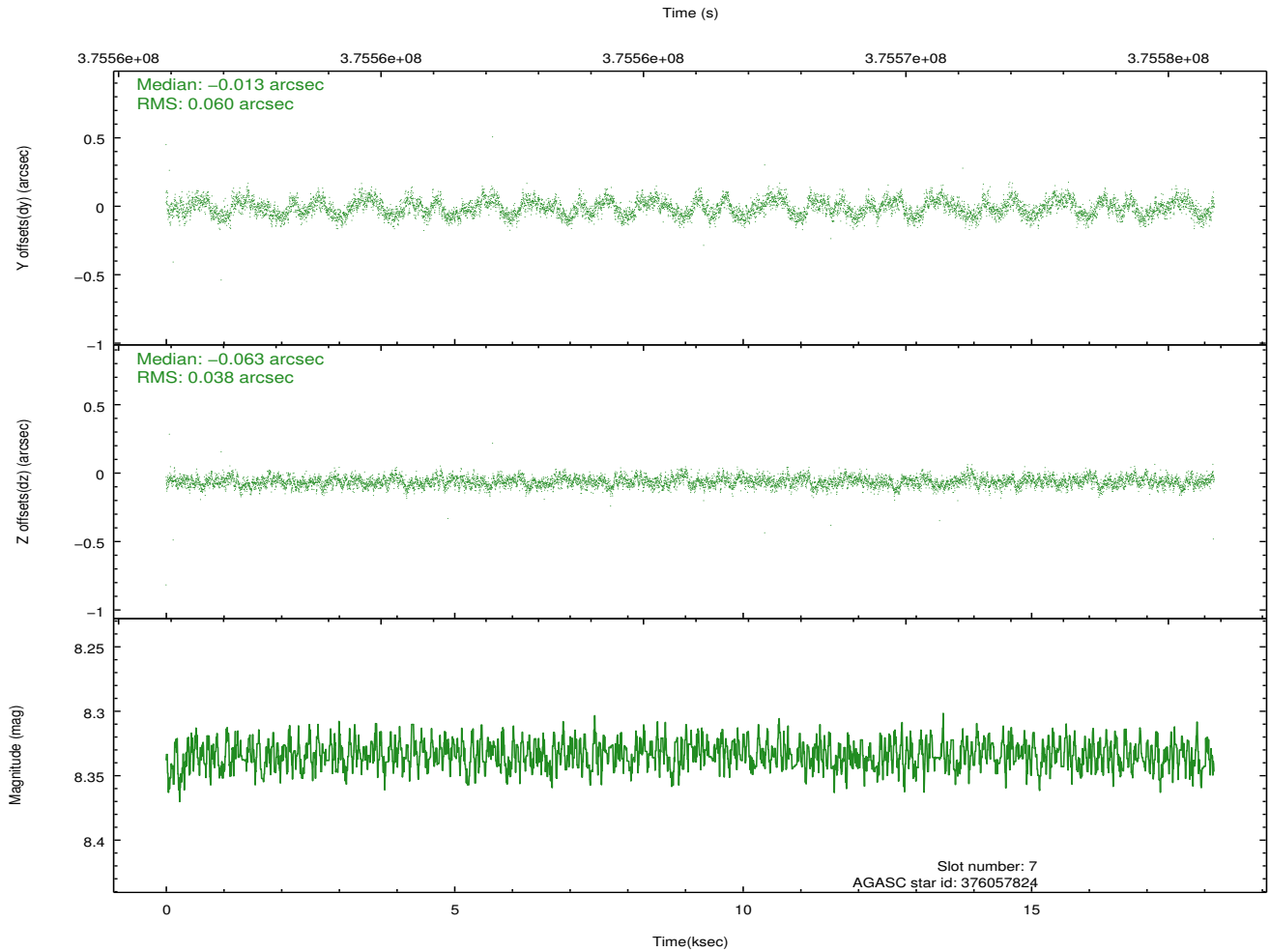
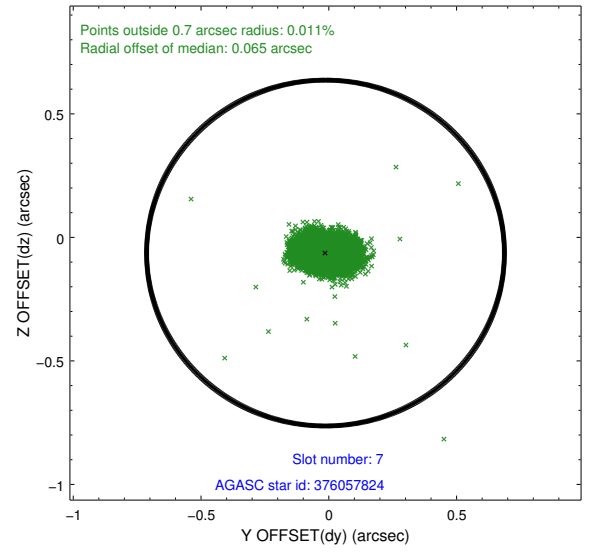
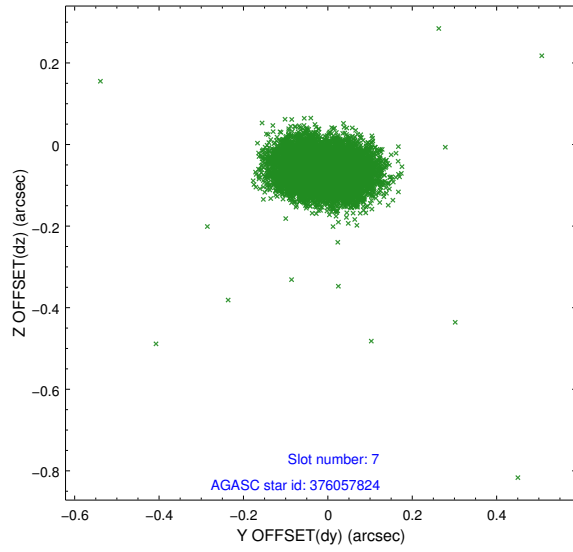
2.4.3 Slot 5



2.4.4 Slot 6

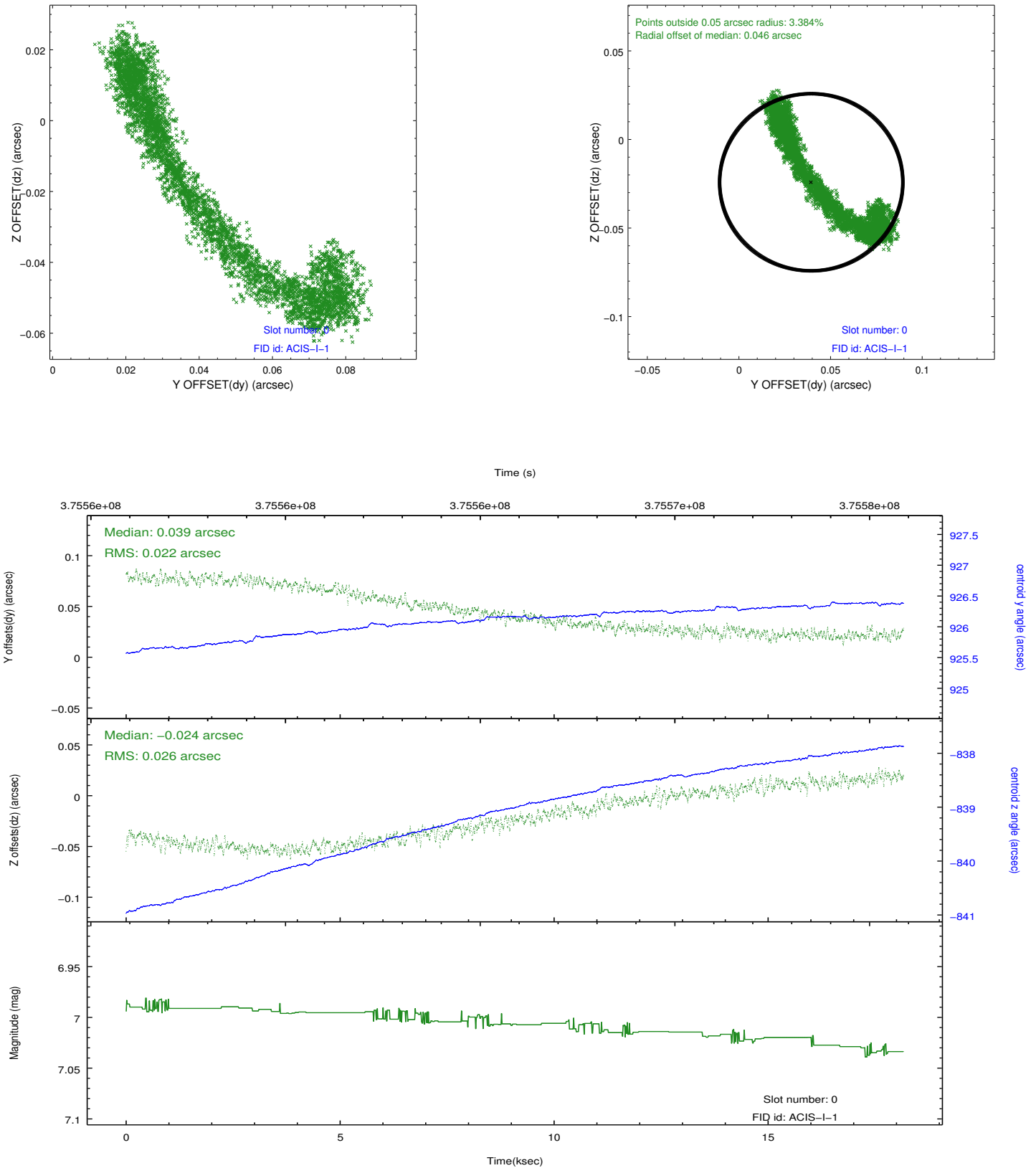


2.4.5 Slot 7

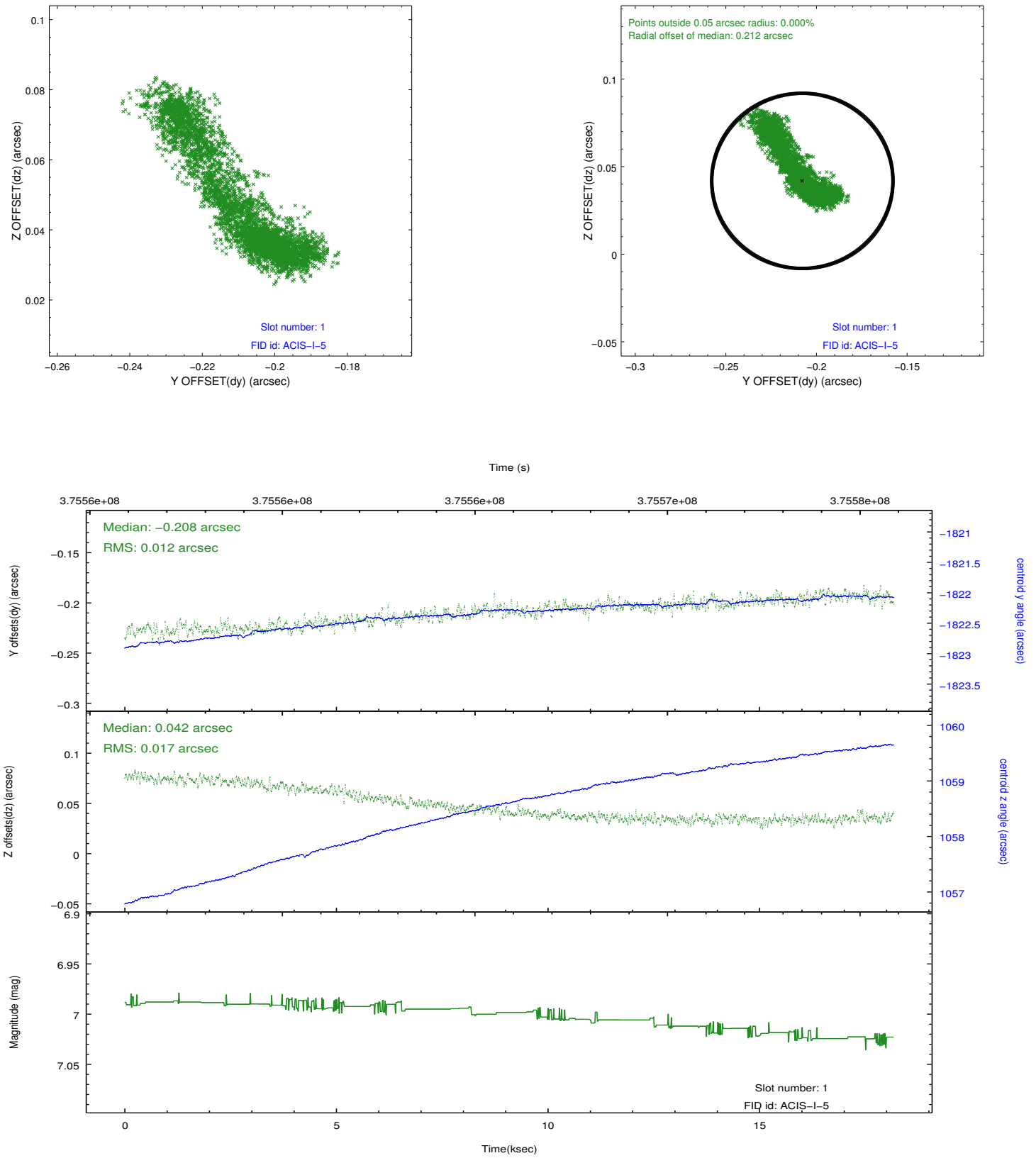


2.5 FID Slots

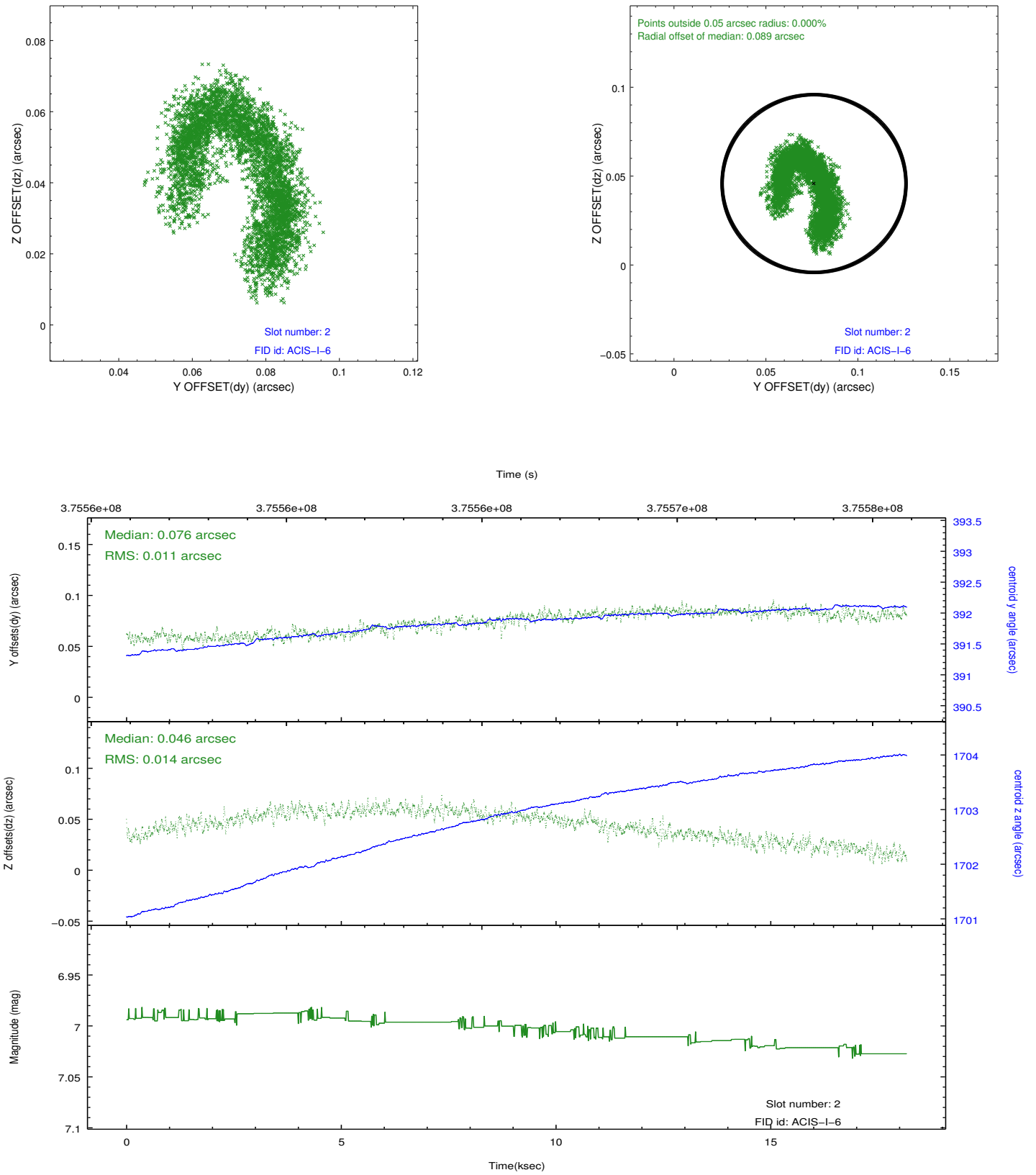
2.5.1 Slot 0



2.5.2 Slot 1



2.5.3 Slot 2



A Summary

A.1 Status

V&V Scientist	Jen Lauer
V&V Date (YYYY-MM-DD)	2012.06.20
V&V Edition	1
V&V Disposition and Status	OK
V&V Charge Time	18.163199932396

A.2 Comments