

V&V Reference Report

L2 ASCDS Version : 8.4.5

Observation 11878 - L2 Version 2
Chandra X-Ray Center

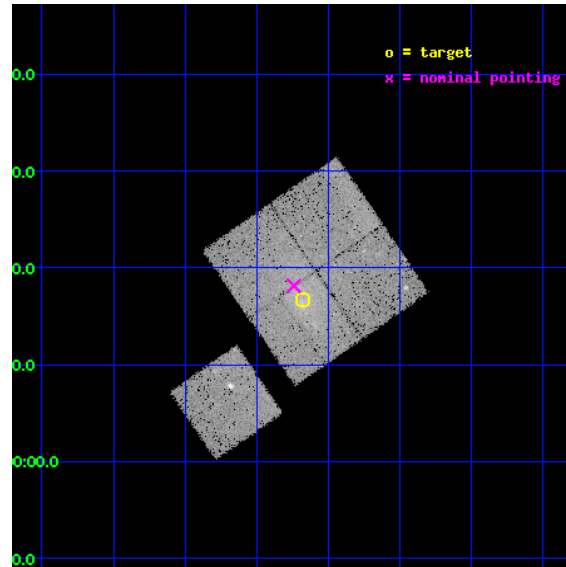
L2 Processing Date : Jun 25 2012

Contents

1	Front	2
2	OBI	3
2.1	OBI	3
2.1.1	Images	3
2.1.2	Bias	3
2.1.3	Parameters	4
2.1.4	Events	4
2.2	Compared Parameters	5
2.3	Aspect	6
2.4	Star Slots	9
2.4.1	Slot 3	9
2.4.2	Slot 4	10
2.4.3	Slot 5	11
2.4.4	Slot 6	12
2.4.5	Slot 7	13
2.5	FID Slots	14
2.5.1	Slot 0	14
2.5.2	Slot 1	15
2.5.3	Slot 2	16
A	Summary	17
A.1	Status	17
A.2	Comments	17

1 Front

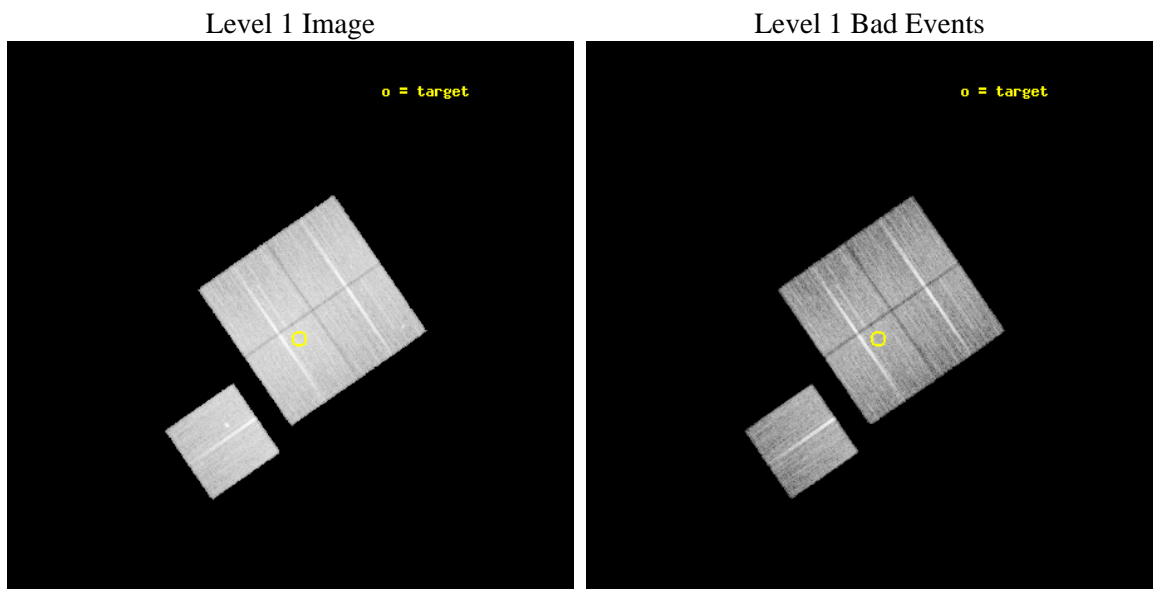
seq_num	800932	Sequence number
obs_id	11878	Observation id
title	Chandra Observations of the Merging Clusters A98 and A1750	Proposa
observer	Dr. Stephen Murray	Principal investigator
object	A1750n	Source name
dtcycle	0	
cycle	P	events from which exps? Prim/Second/Both
ra_targ	202.795125	Observer's specified target RA [deg]
dec_targ	-1.7225	Observer's specified target Dec [deg]
ra_nom	202.81025138649	Nominal RA [deg]
dec_nom	-1.697722504983	Nominal Dec [deg]
roll_nom	235.40086425406	Nominal Roll [deg]
revision	2	Processing version of data
ontime	19768.70015204	Sum of GTIs [s]
livetime	19510.407531048	Livetime [s]
ontime0	19768.70015204	Sum of GTIs [s]
ontime1	19765.559151709	Sum of GTIs [s]
ontime2	19768.70015204	Sum of GTIs [s]
ontime3	19768.70015204	Sum of GTIs [s]
ontime6	19765.559131801	Sum of GTIs [s]
l2events	82168	Number of level 2 events



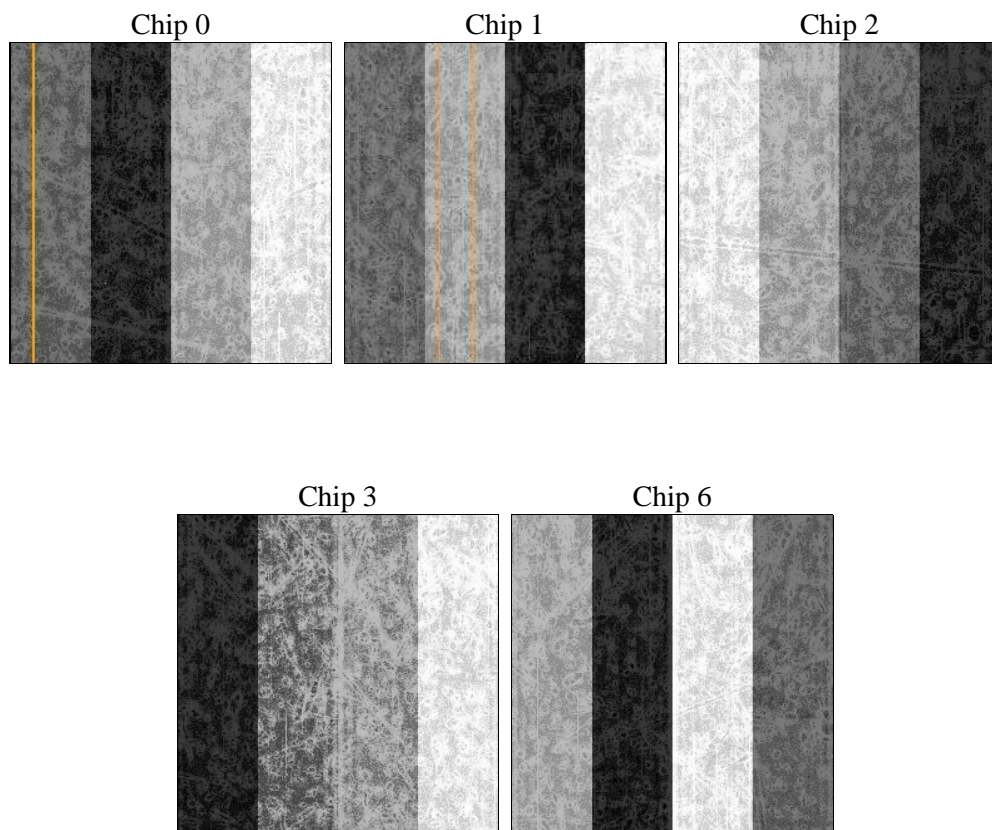
2 OBI

2.1 OBI

2.1.1 Images



2.1.2 Bias



2.1.3 Parameters

obi_num	0	Obi number	sched_exp_time	20000.000000	[s] Scheduled observation exposure time
ascdsver	8.4.5	Processing system revision	ontime	19768.70015204	Sum of GTIs [s]
caldsver	4.4.10	 	ontime0	19768.70015204	Sum of GTIs [s]
date	2012-06-25T10:53:40	Date and time of file creation	ontime1	19765.559151709	Sum of GTIs [s]
revision	2	Processing version of data	ontime2	19768.70015204	Sum of GTIs [s]
			ontime3	19768.70015204	Sum of GTIs [s]
			ontime6	19765.559131801	Sum of GTIs [s]
			l1events	750603	Number of level 1 events

2.1.4 Events

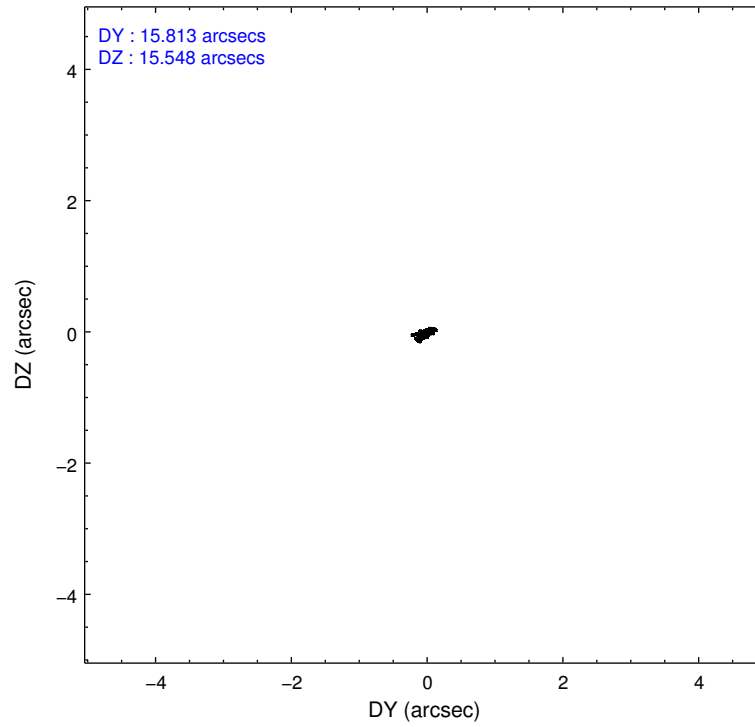
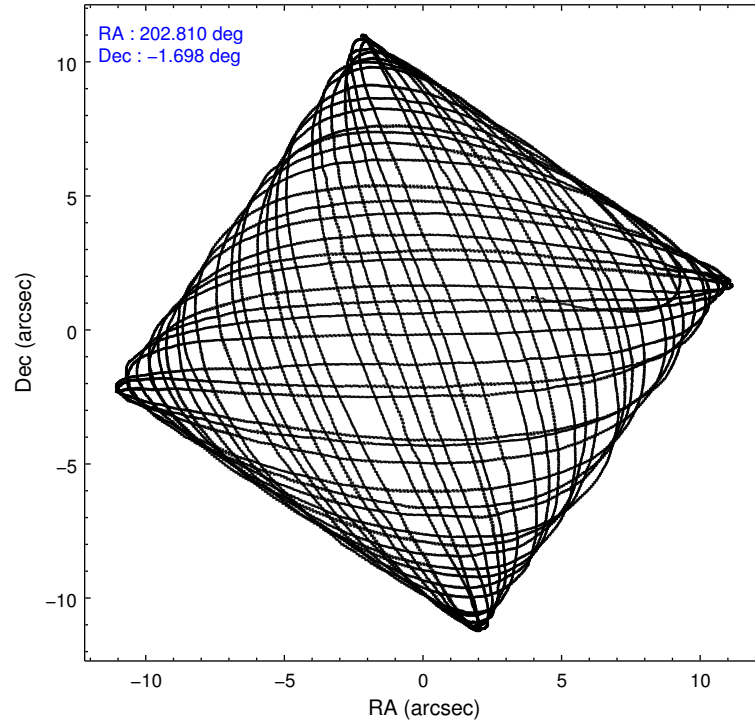
	ccd 0	ccd 1	ccd 2	ccd 3	ccd 6
level 1 events	139163	145189	161746	153290	151215
rejected events	121512	126165	138090	135374	133381
rejected %	87%	86%	85%	88%	88%

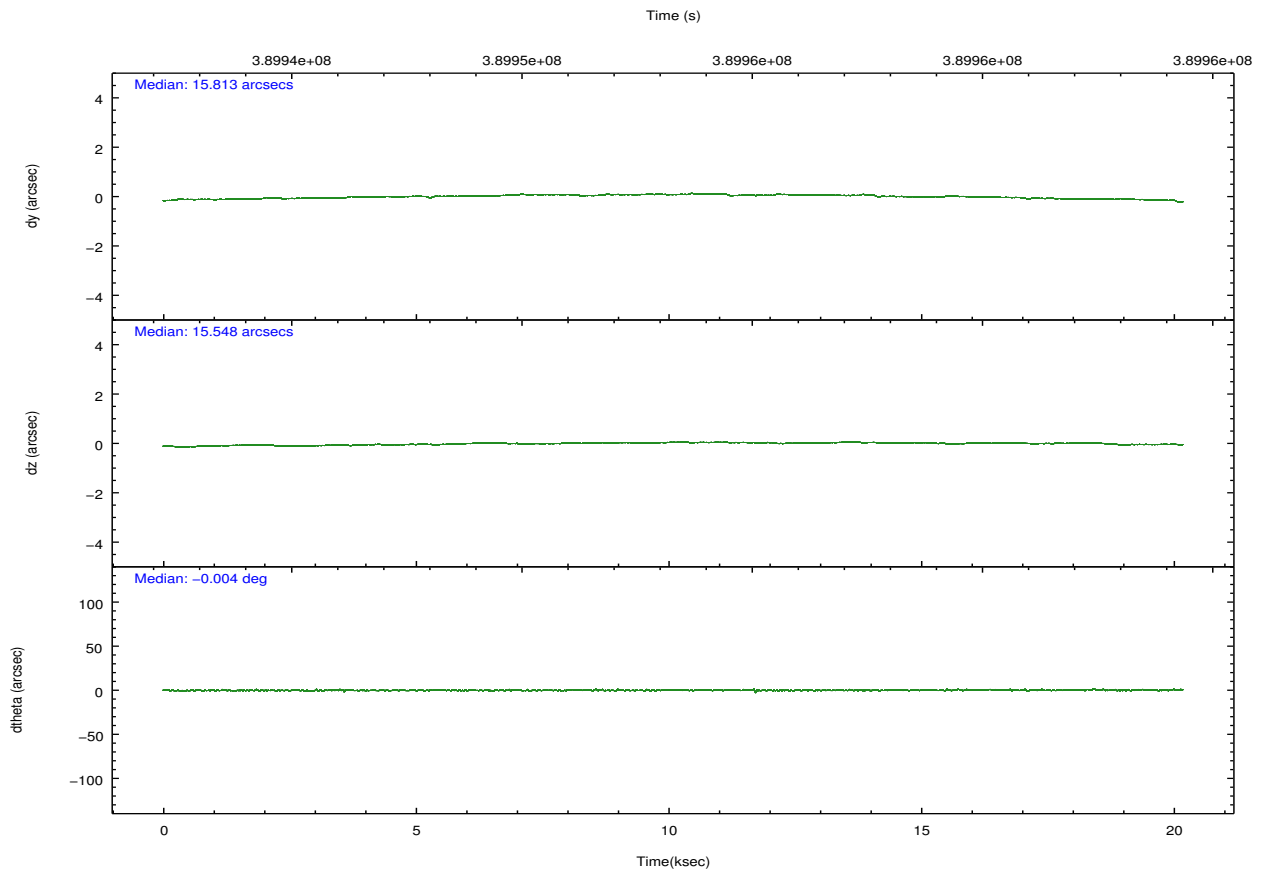
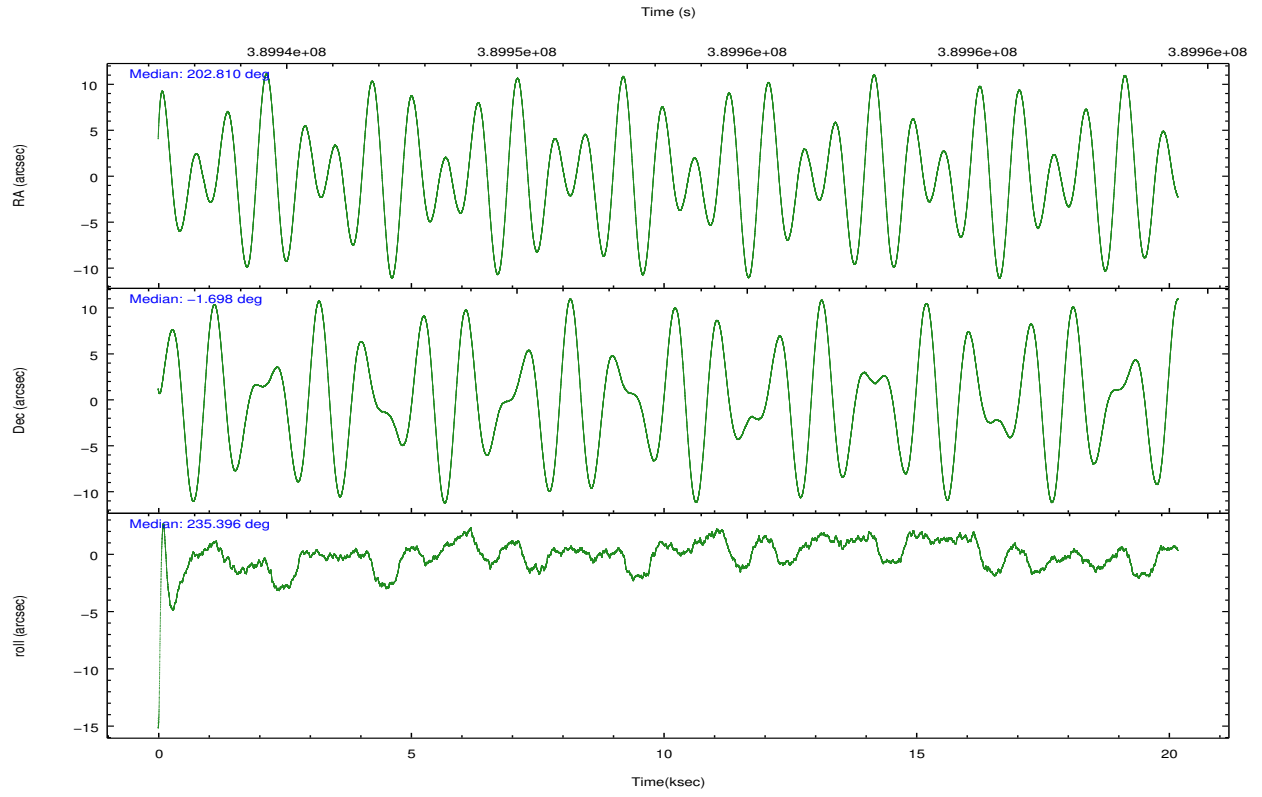
	ccd 0	ccd 1	ccd 2	ccd 3	ccd 6
grade 0 events	6832	7220	12131	7603	6981
	4%	4%	7%	4%	4%
grade 1 events	89	88	126	102	81
	0%	0%	0%	0%	0%
grade 2 events	4095	4323	4548	3668	3738
	2%	2%	2%	2%	2%
grade 3 events	1793	1883	1828	1775	1798
	1%	1%	1%	1%	1%
grade 4 events	1660	1846	2017	1751	1781
	1%	1%	1%	1%	1%
grade 5 events	6149	6504	5833	6794	6555
	4%	4%	3%	4%	4%
grade 6 events	3278	3760	3139	3124	3543
	2%	2%	1%	2%	2%
grade 7 events	115267	119565	132124	128473	126738
	82%	82%	81%	83%	83%

2.2 Compared Parameters

Parameter	Planned	Actual	Parameter	Planned	Actual
Instrument	ACIS	ACIS	Obspar format version number	7	7
Detector	ACIS-01236	ACIS-01236	Obspar file type	PREDICTED	ACTUAL
Grating	NONE	NONE	Obspar update status	NONE	UPDATED
Data mode	VFAINT	VFAINT	Number of optional ACIS chips dropped	0	0
Observation mode	POINTING	POINTING	On-chip summing requested	N	N
[deg] Pointing RA	202.812333	202.8102513864928	Subarray requested	NONE	NONE
[deg] Pointing Dec	-1.670308	-1.697722504983037	Alternating exposures requested	N	N
[deg] Pointing Roll	235.192249	235.4008642540648	[s] Primary exposure time	0.000000	3.1
[mm] SIM focus pos	-0.782348	-0.7809083437167272			
[mm] SIM defocus	0	0.001439871863259334			
[mm] SIM translation stage pos	-227.592463	-227.5958210972112			
[mm] SIM translation stage offset	-6	-5.996631905718488			
[s] Observation start time (MET)	389943370.184000	389942519.70747			
Observation start date	2010-05-11T05:35:04	2010-05-11T05:21:59			
[s] Observation end time (MET)	389963370.184000	389963823.82106			
Observation end date	2010-05-11T11:08:24	2010-05-11T11:17:03			
Read mode	TIMED	TIMED			

2.3 Aspect



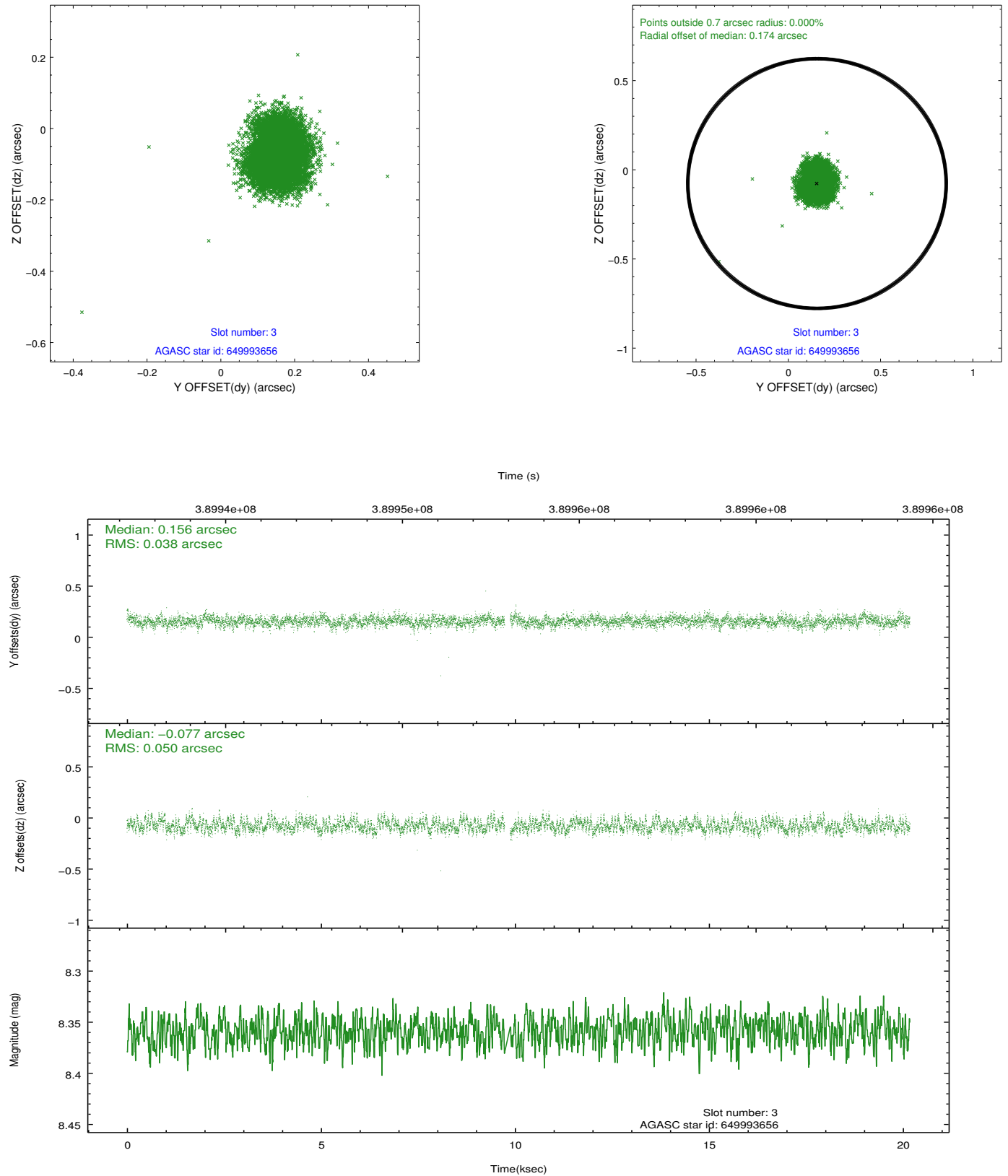


Slot Statistics

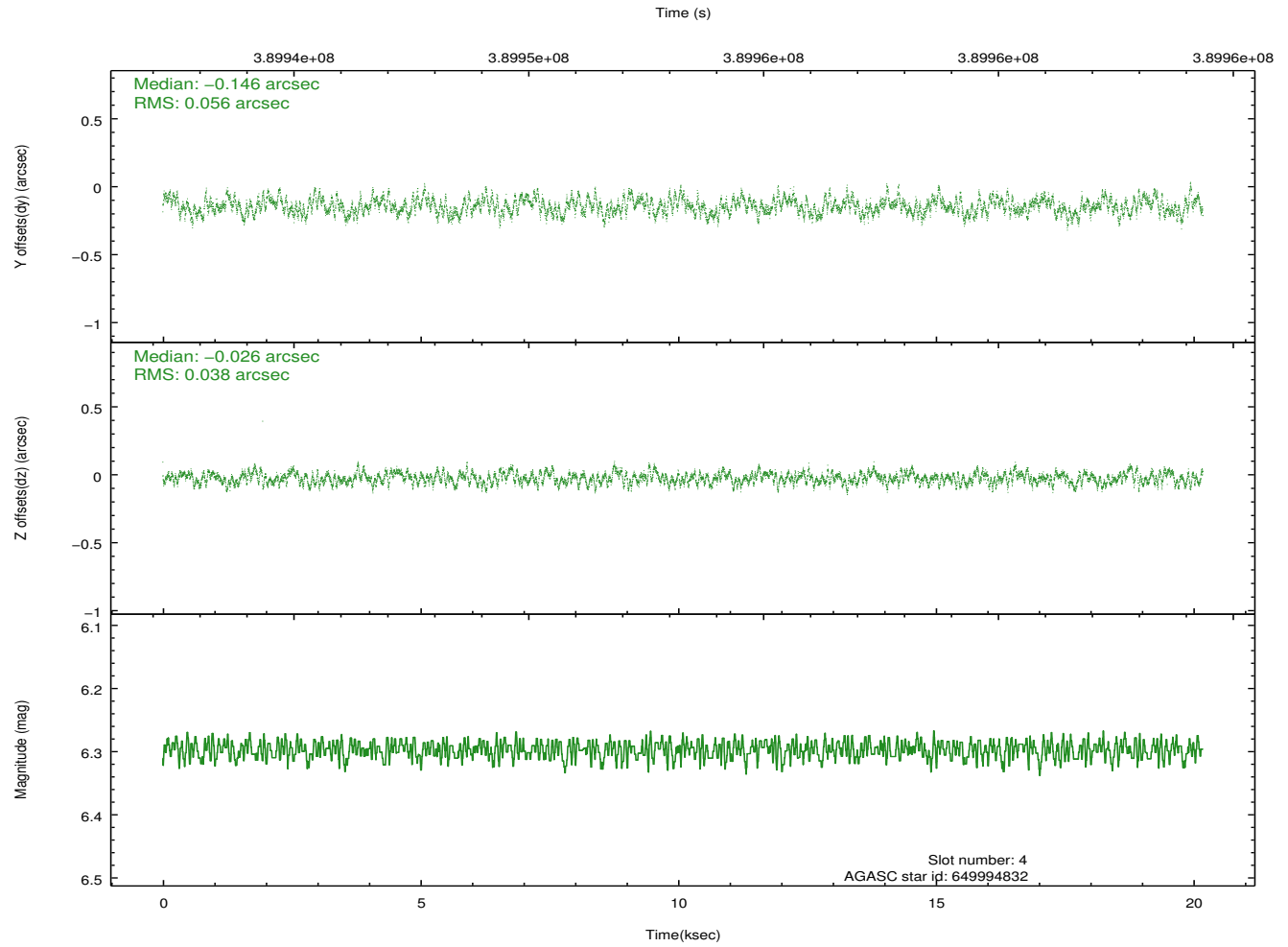
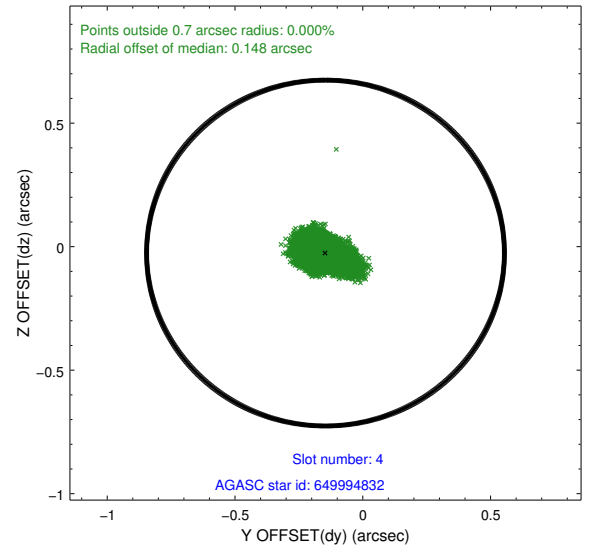
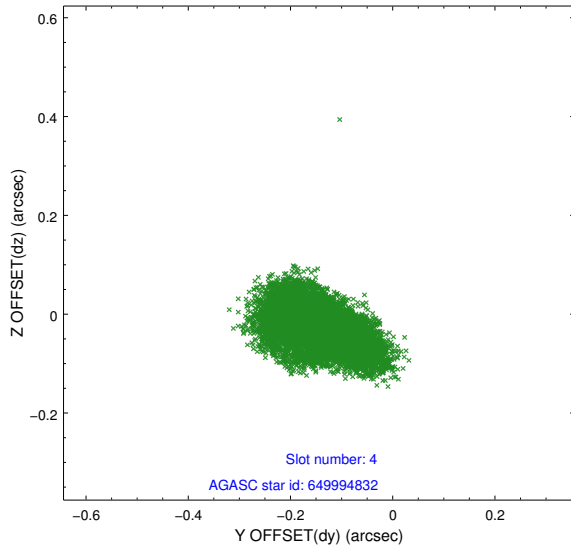
slot	status	id	mag	n_pts	med_dy	med_dz	dr1	dr2	ra	dec	mean_y	mean_z
0	FID	ACIS-I-1	7.06	4923	0.065	-0.027	0.006	0.011	0.000000	0.000000	923.62	-962.23
1	FID	ACIS-I-5	7.04	4923	-0.232	0.063	0.006	0.010	0.000000	0.000000	-1824.74	935.16
2	FID	ACIS-I-6	7.05	4923	0.076	0.035	0.007	0.011	0.000000	0.000000	388.89	1579.91
3	GUIDE	649993656	8.36	9769	0.156	-0.077	0.066	0.107	202.447079	-1.396902	-56.94	-1640.82
4	GUIDE	649994832	6.30	9845	-0.146	-0.026	0.072	0.119	202.312148	-1.364425	124.81	-2106.39
5	GUIDE	650904408	8.37	9841	-0.158	-0.108	0.070	0.111	202.793007	-2.262184	1789.45	1159.10
6	GUIDE	650904504	7.97	9846	0.290	0.291	0.068	0.107	202.937627	-1.239362	-1530.29	-514.70
7	GUIDE	650906736	9.40	9766	-0.143	-0.078	0.116	0.183	203.434610	-1.424854	-2003.33	1334.45

2.4 Star Slots

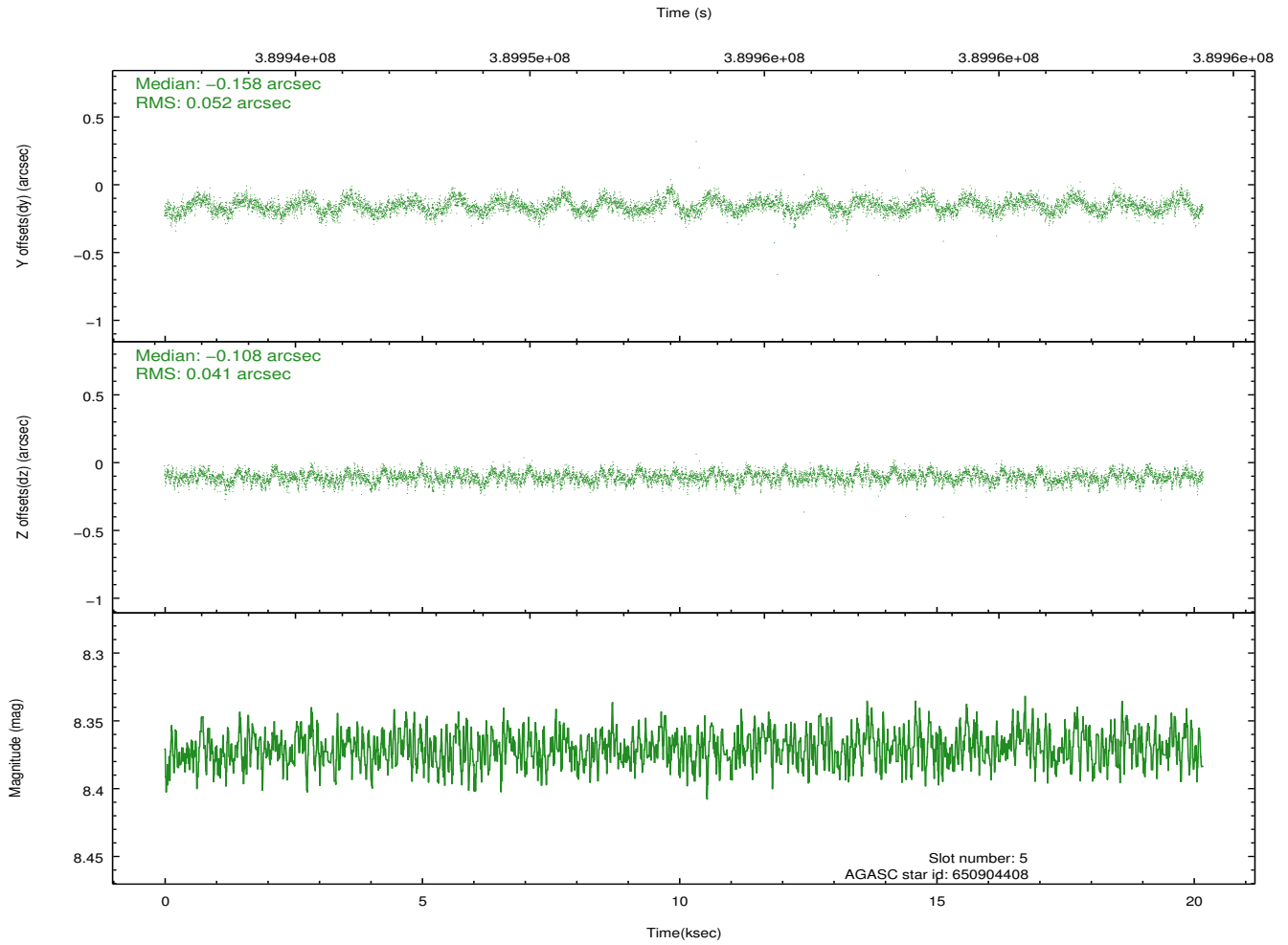
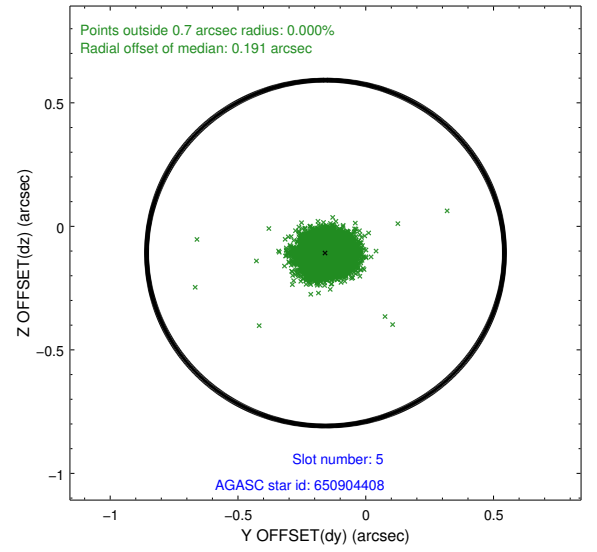
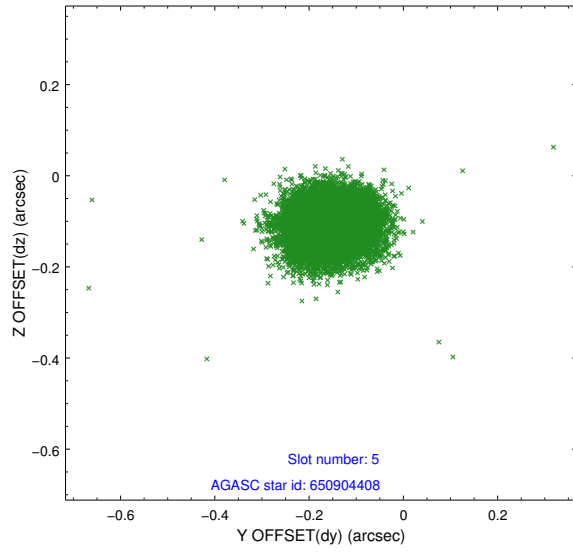
2.4.1 Slot 3



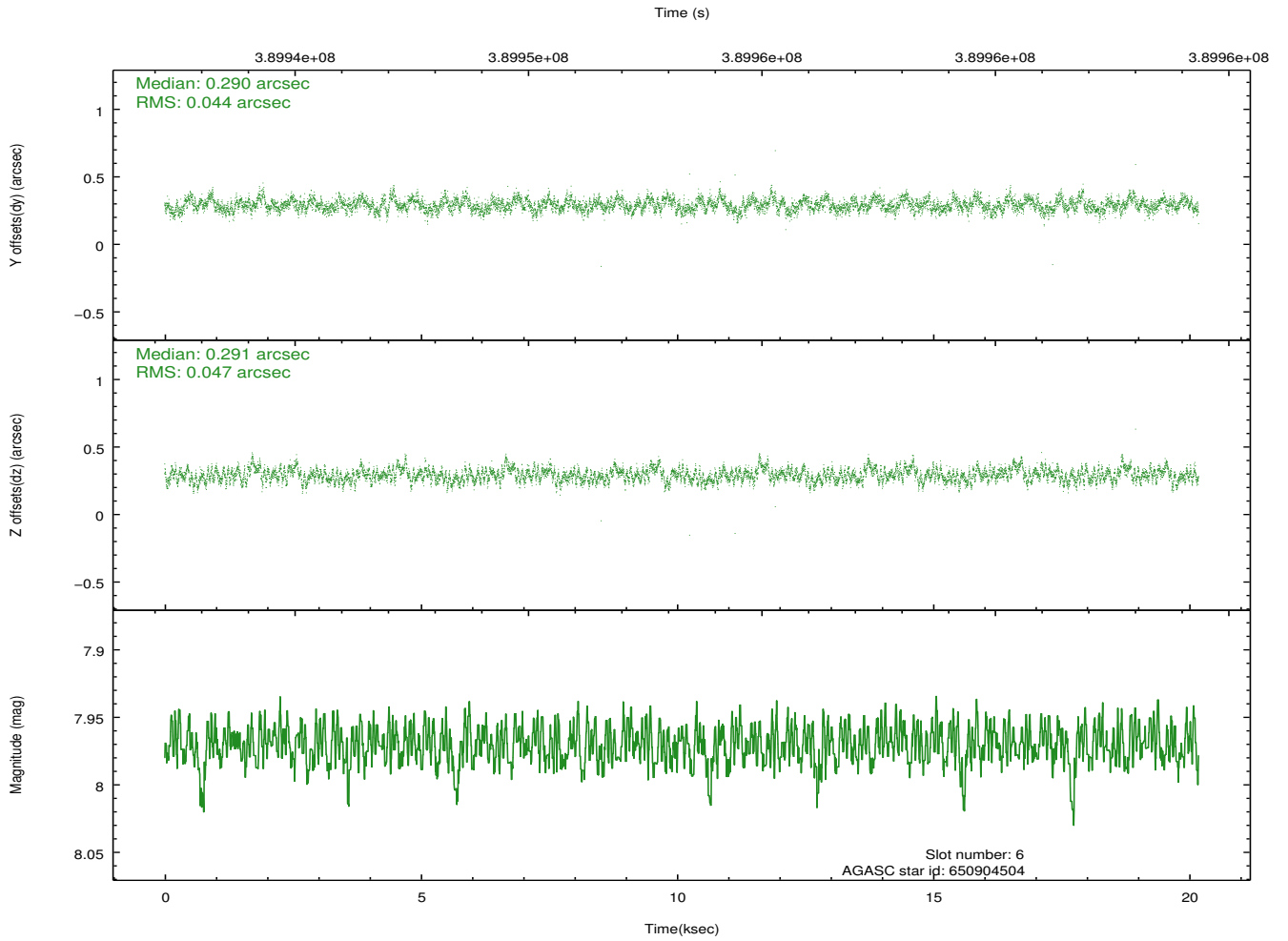
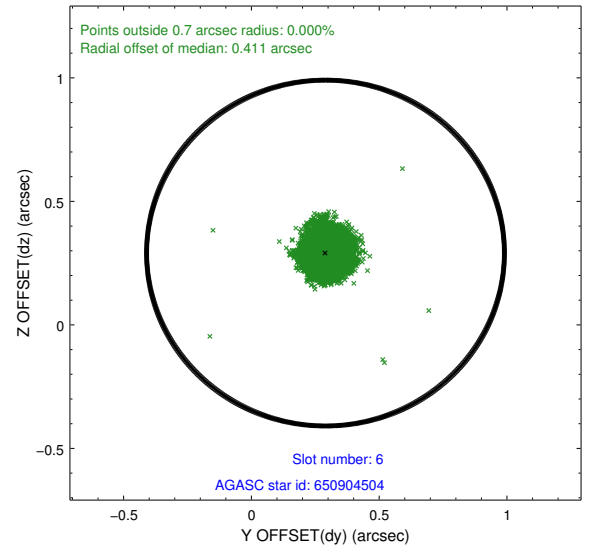
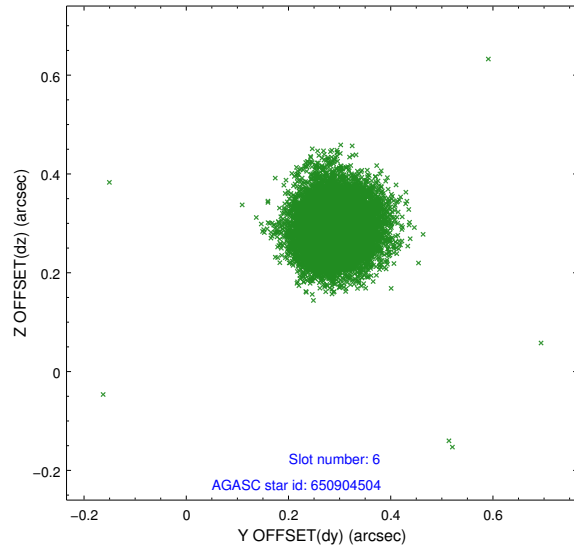
2.4.2 Slot 4



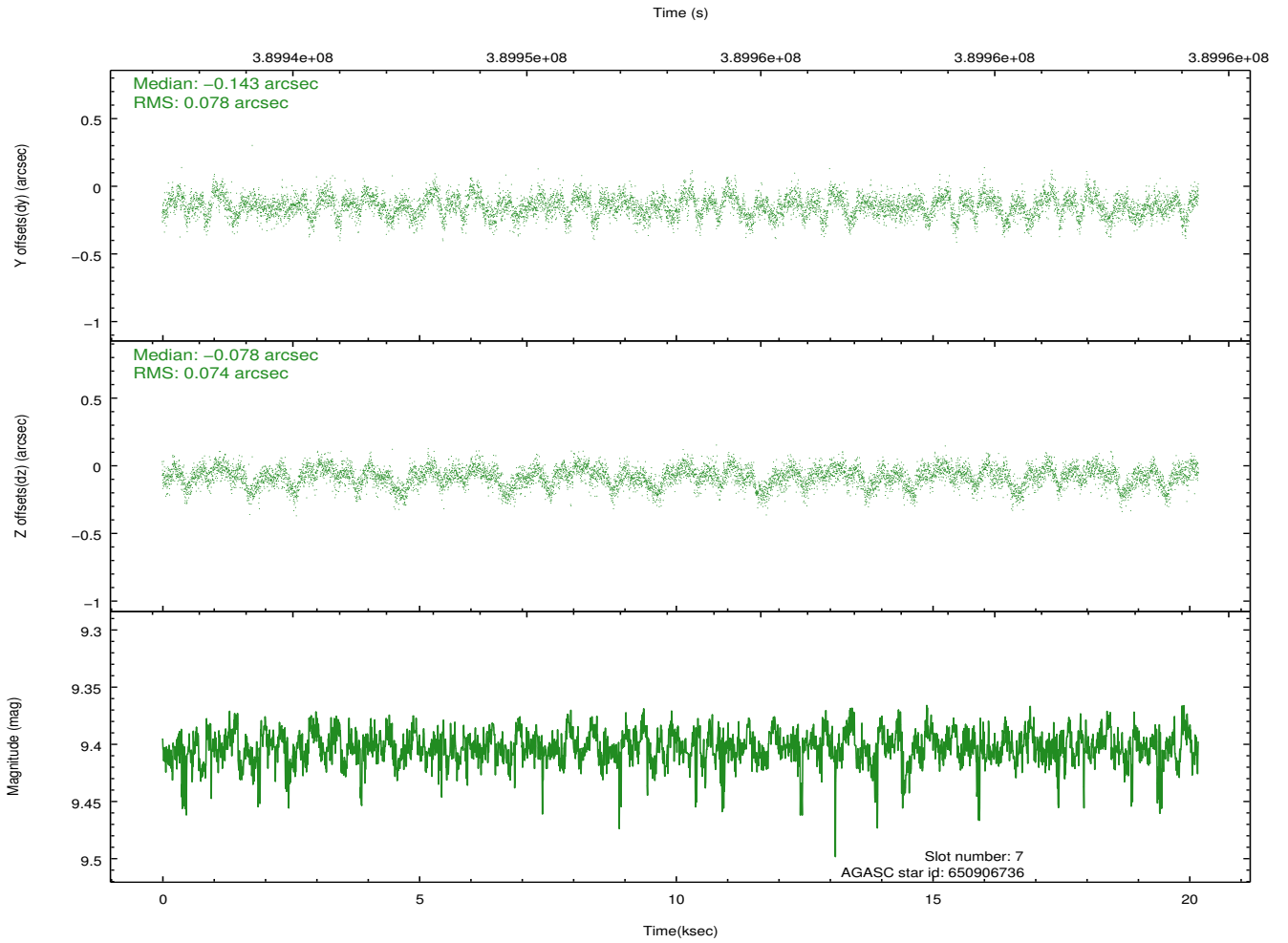
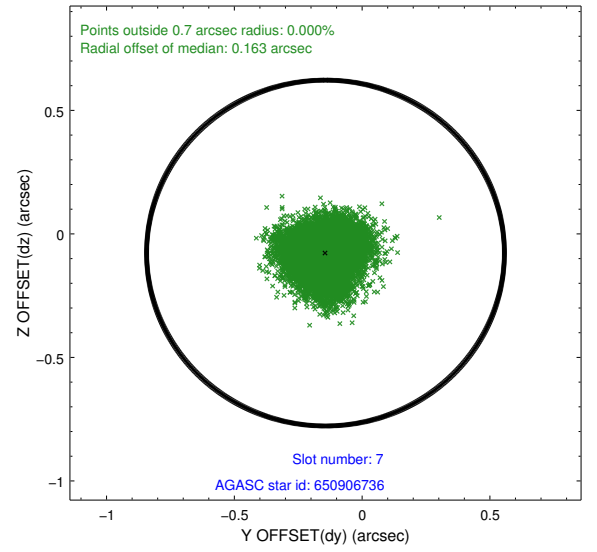
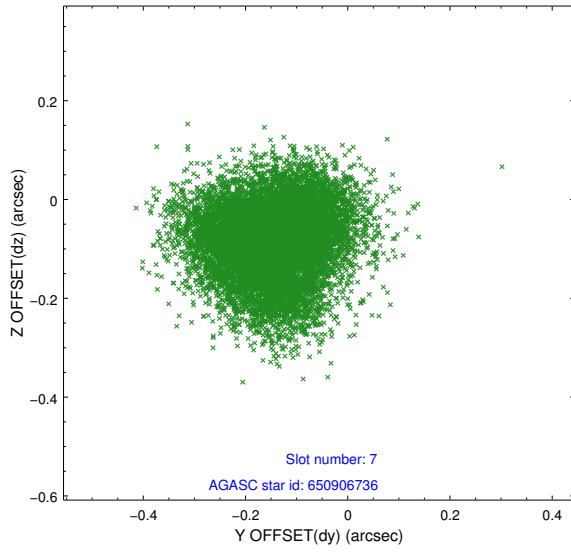
2.4.3 Slot 5



2.4.4 Slot 6

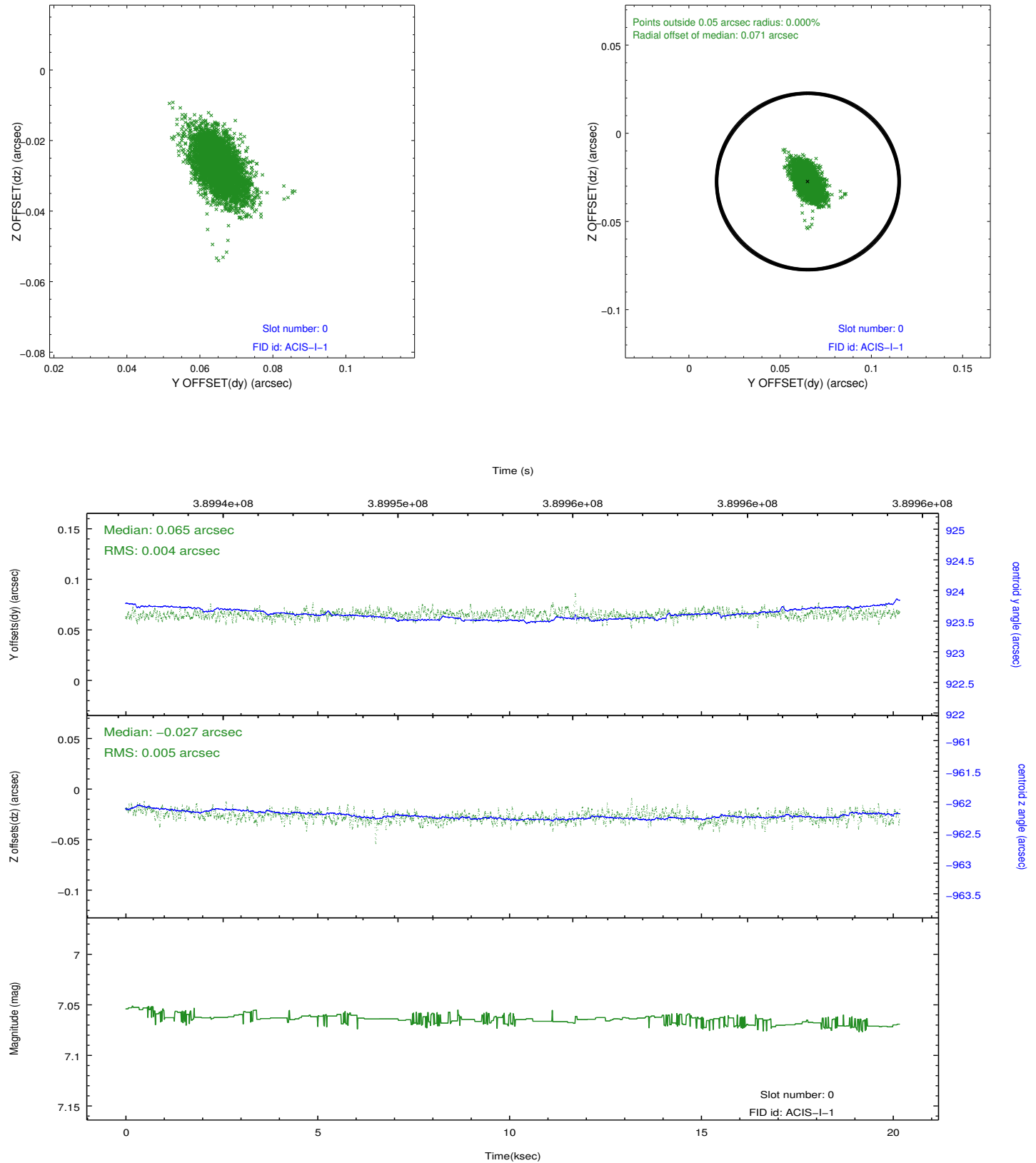


2.4.5 Slot 7

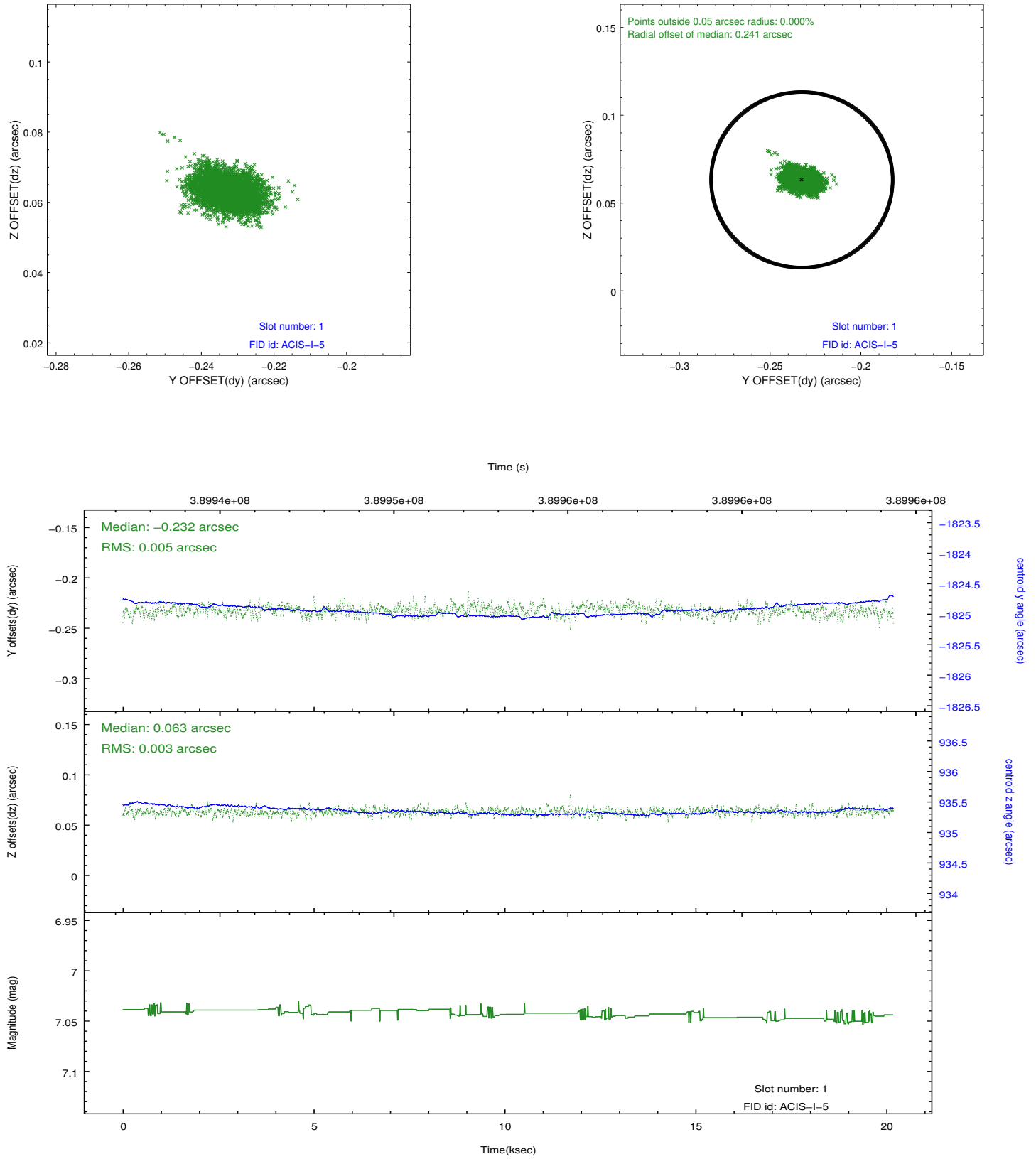


2.5 FID Slots

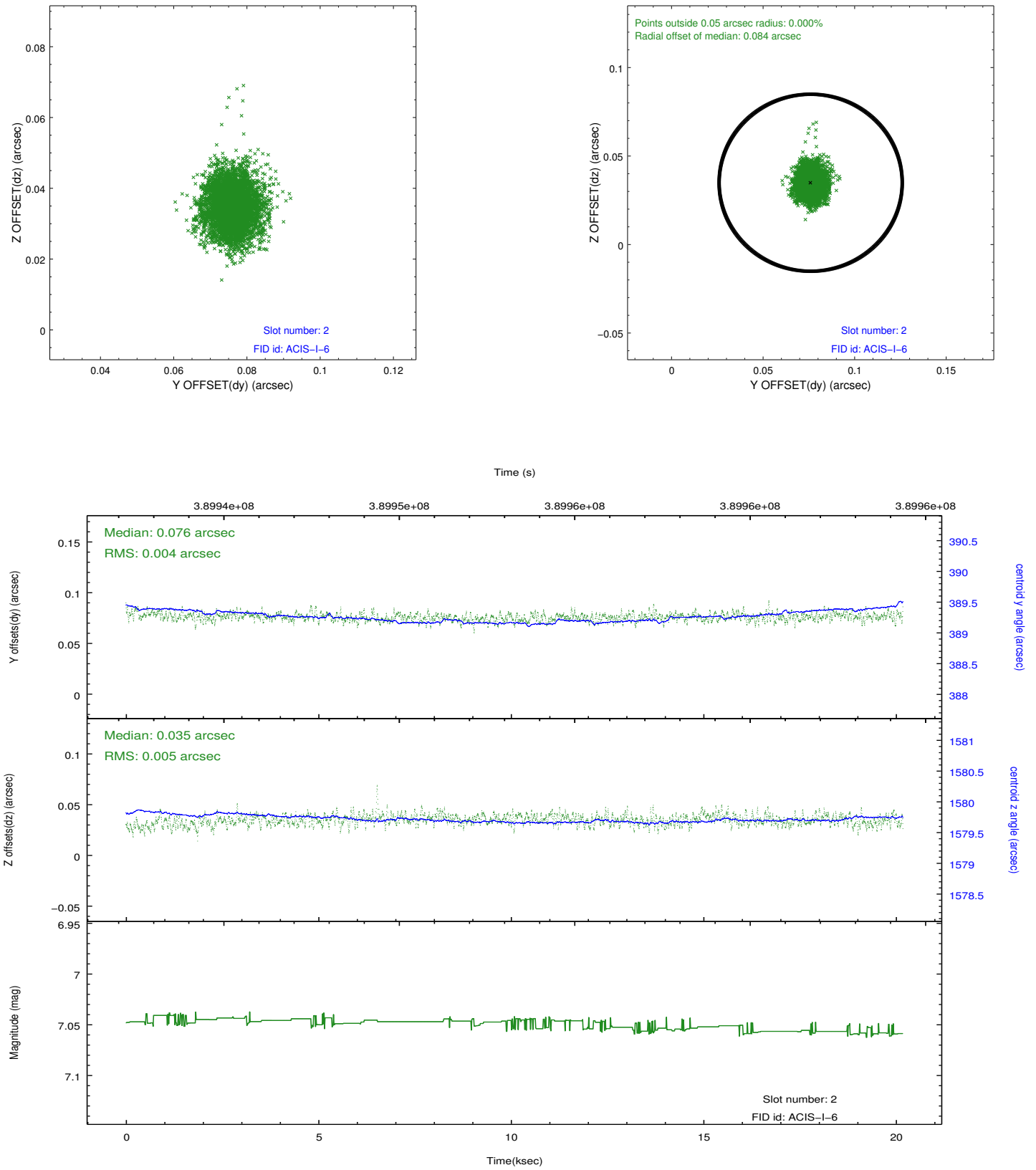
2.5.1 Slot 0



2.5.2 Slot 1



2.5.3 Slot 2



A Summary

A.1 Status

V&V Scientist	Jen Lauer
V&V Date (YYYY-MM-DD)	2012.07.02
V&V Edition	1
V&V Disposition and Status	OK
V&V Charge Time	19.76870015204

A.2 Comments