

V&V Reference Report

L2 ASCDS Version : 8.4.5

Observation 11760 - L2 Version 2
Chandra X-Ray Center

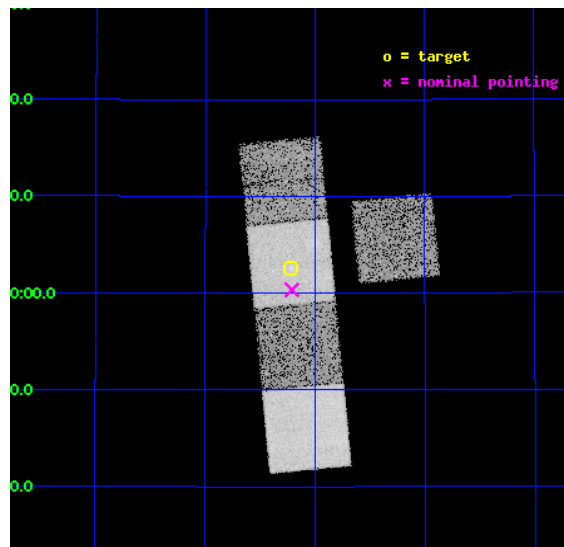
L2 Processing Date : Jun 29 2012

Contents

1	Front	2
2	OBI	3
2.1	OBI	3
2.1.1	Images	3
2.1.2	Bias	3
2.1.3	Parameters	4
2.1.4	Events	4
2.2	Compared Parameters	5
2.3	Aspect	6
2.4	Star Slots	9
2.4.1	Slot 3	9
2.4.2	Slot 4	10
2.4.3	Slot 5	11
2.4.4	Slot 6	12
2.4.5	Slot 7	13
2.5	FID Slots	14
2.5.1	Slot 0	14
2.5.2	Slot 1	15
2.5.3	Slot 2	16
A	Summary	17
A.1	Status	17
A.2	Comments	17

1 Front

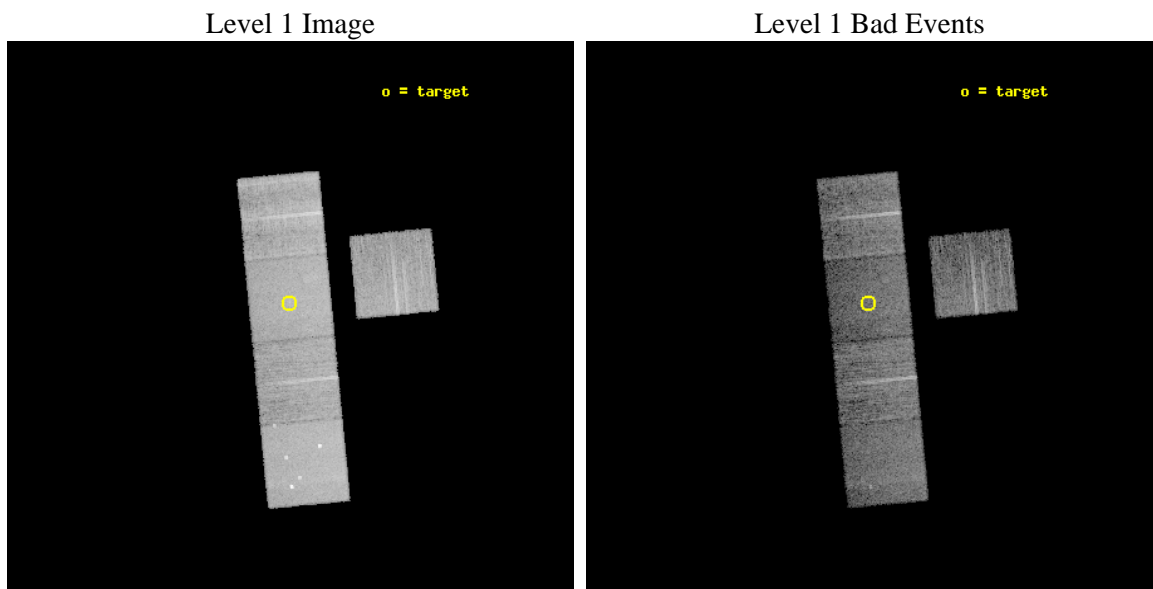
seq_num	800900	Sequence number
obs_id	11760	Observation id
title	The X-Ray, SZ, and Optical Scaling Relations of Massive Galaxy Clusters	Proposal title
observer	Dr. Eli Rykoff	Principal investigator
object	A1319	Source name
dtcycle	0	
cycle	P	events from which exps? Prim/Second/Both
ra_targ	174.054167	Observer's specified target RA [deg]
dec_targ	40.043278	Observer's specified target Dec [deg]
ra_nom	174.05270045429	Nominal RA [deg]
dec_nom	40.005721863692	Nominal Dec [deg]
roll_nom	264.5034975459	Nominal Roll [deg]
revision	2	Processing version of data
ontime	10036.806038499	Sum of GTIs [s]
livetime	9905.6677786168	Livetime [s]
ontime3	10036.682918489	Sum of GTIs [s]
ontime5	10036.764998496	Sum of GTIs [s]
ontime6	10036.723958492	Sum of GTIs [s]
ontime7	10036.806038499	Sum of GTIs [s]
ontime8	10036.641878486	Sum of GTIs [s]
l2events	117551	Number of level 2 events



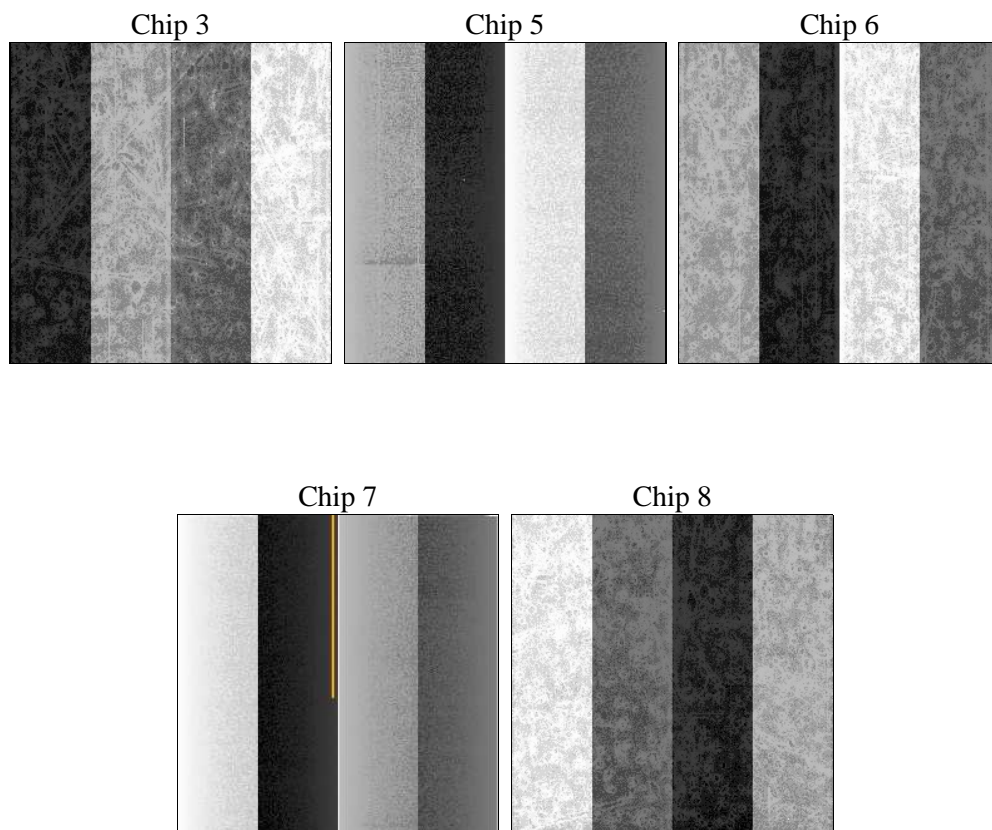
2 OBI

2.1 OBI

2.1.1 Images



2.1.2 Bias



2.1.3 Parameters

obi_num	0	Obi number	sched_exp_time	10000.000000	[s] Scheduled observation exposure time
ascdsver	8.4.5	Processing system revision	ontime	10036.806038499	Sum of GTIs [s]
caldsver	4.5.0	 	ontime3	10036.682918489	Sum of GTIs [s]
date	2012-06-29T11:22:05	Date and time of file creation	ontime5	10036.764998496	Sum of GTIs [s]
revision	2	Processing version of data	ontime6	10036.723958492	Sum of GTIs [s]
			ontime7	10036.806038499	Sum of GTIs [s]
			ontime8	10036.641878486	Sum of GTIs [s]
			l1events	456460	Number of level 1 events

2.1.4 Events

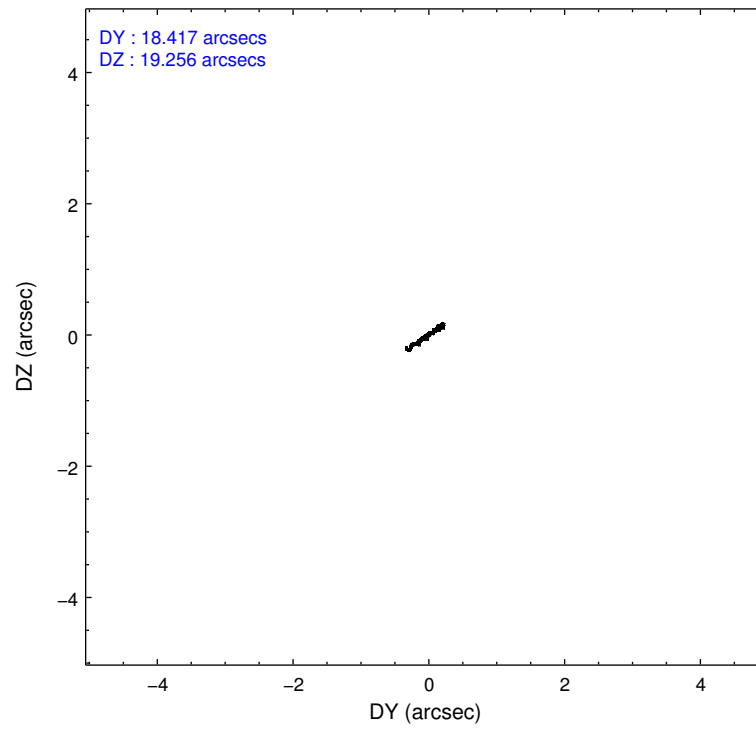
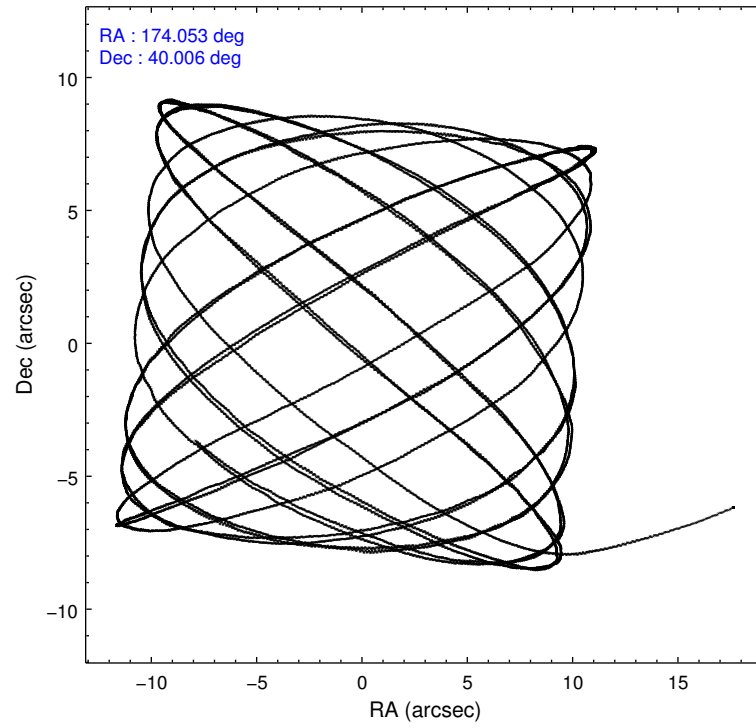
	ccd 3	ccd 5	ccd 6	ccd 7	ccd 8
level 1 events	73359	116277	75449	94563	96812
rejected events	65662	57796	67064	50985	71204
rejected %	89%	49%	88%	53%	73%

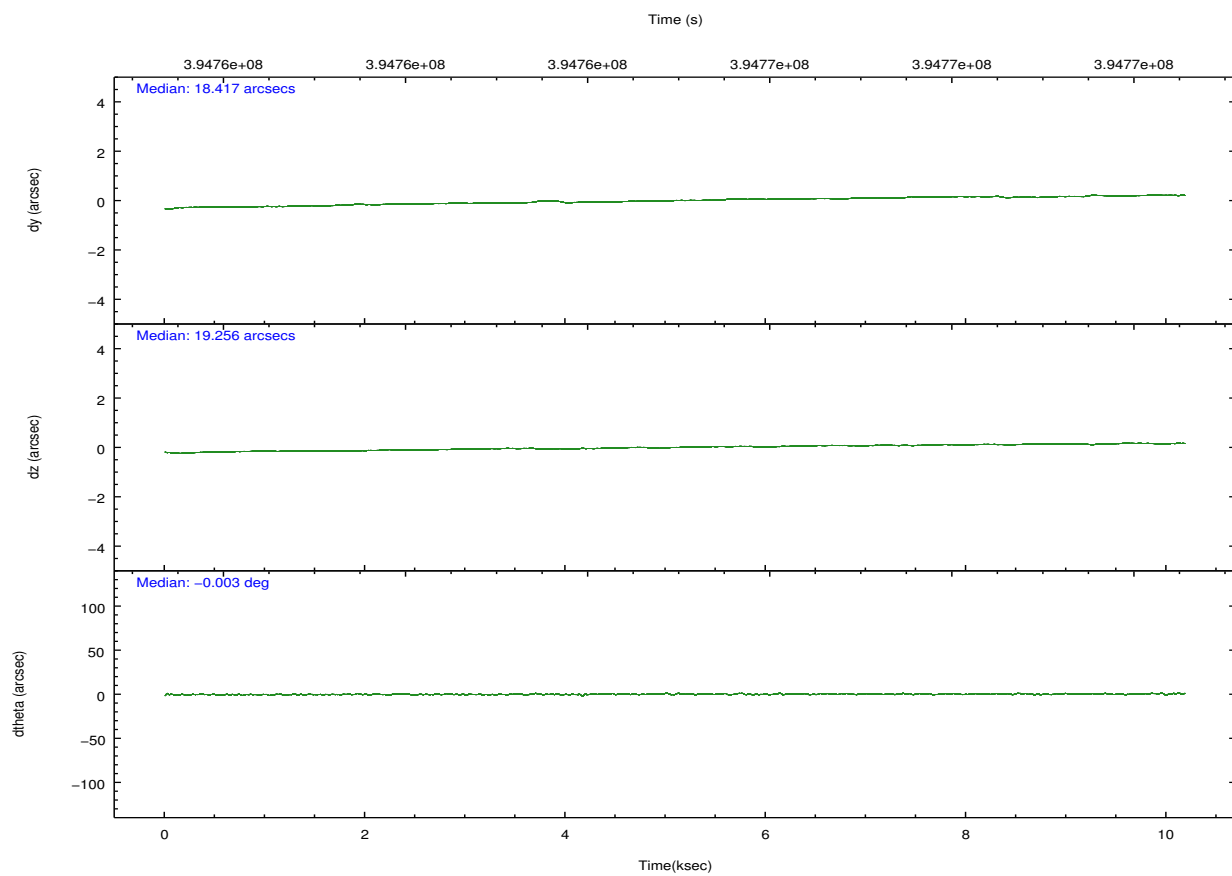
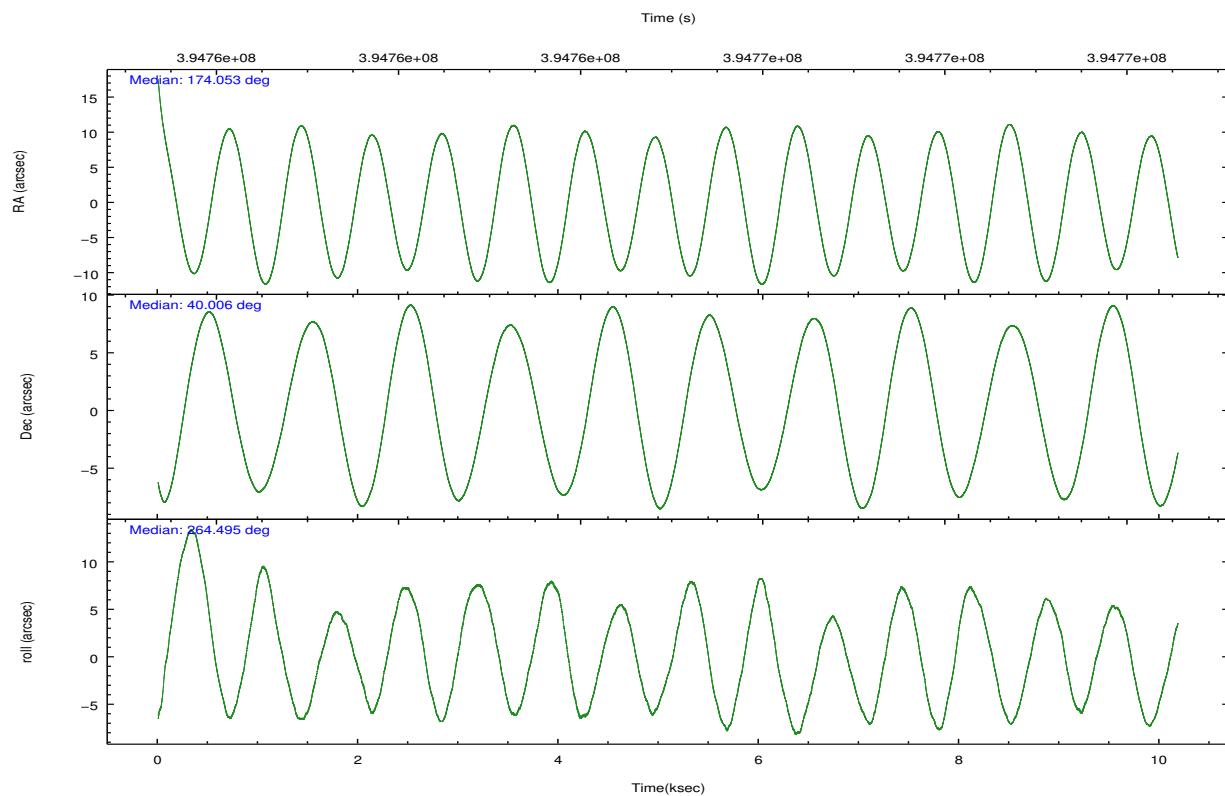
	ccd 3	ccd 5	ccd 6	ccd 7	ccd 8
grade 0 events	2689	8048	2942	4406	7683
	3%	6%	3%	4%	7%
grade 1 events	43	407	40	125	74
	0%	0%	0%	0%	0%
grade 2 events	1732	16724	1815	9103	5919
	2%	14%	2%	9%	6%
grade 3 events	869	2218	884	3916	2669
	1%	1%	1%	4%	2%
grade 4 events	855	2044	903	3895	2544
	1%	1%	1%	4%	2%
grade 5 events	3358	8737	3347	9713	4920
	4%	7%	4%	10%	5%
grade 6 events	1553	29478	1845	22280	6806
	2%	25%	2%	23%	7%
grade 7 events	62260	48621	63673	41125	66197
	84%	41%	84%	43%	68%

2.2 Compared Parameters

Parameter	Planned	Actual	Parameter	Planned	Actual
Instrument	ACIS	ACIS	Obspar format version number	7	7
Detector	ACIS-35678	ACIS-35678	Obspar file type	PREDICTED	ACTUAL
Grating	NONE	NONE	Obspar update status	NONE	UPDATED
Data mode	VFAINT	VFAINT	Number of optional ACIS chips dropped	0	0
Observation mode	POINTING	POINTING	On-chip summing requested	N	N
[deg] Pointing RA	174.037415	174.0527004542945	Subarray requested	NONE	NONE
[deg] Pointing Dec	40.030471	40.0057218636917	Alternating exposures requested	N	N
[deg] Pointing Roll	264.356710	264.5034975459031	[s] Primary exposure time	0.000000	3.1
[mm] SIM focus pos	-0.684267	-0.6828225247311905			
[mm] SIM defocus	0	0.001444936568705701			
[mm] SIM translation stage pos	-190.132523	-190.1425803651734			
[mm] SIM translation stage offset	0	0.01005778216563158			
[s] Observation start time (MET)	394760063.184000	394758324.09048			
Observation start date	2010-07-05T23:33:17	2010-07-05T23:05:24			
[s] Observation end time (MET)	394770063.184000	394770510.3161			
Observation end date	2010-07-06T02:19:57	2010-07-06T02:28:30			
Read mode	TIMED	TIMED			

2.3 Aspect



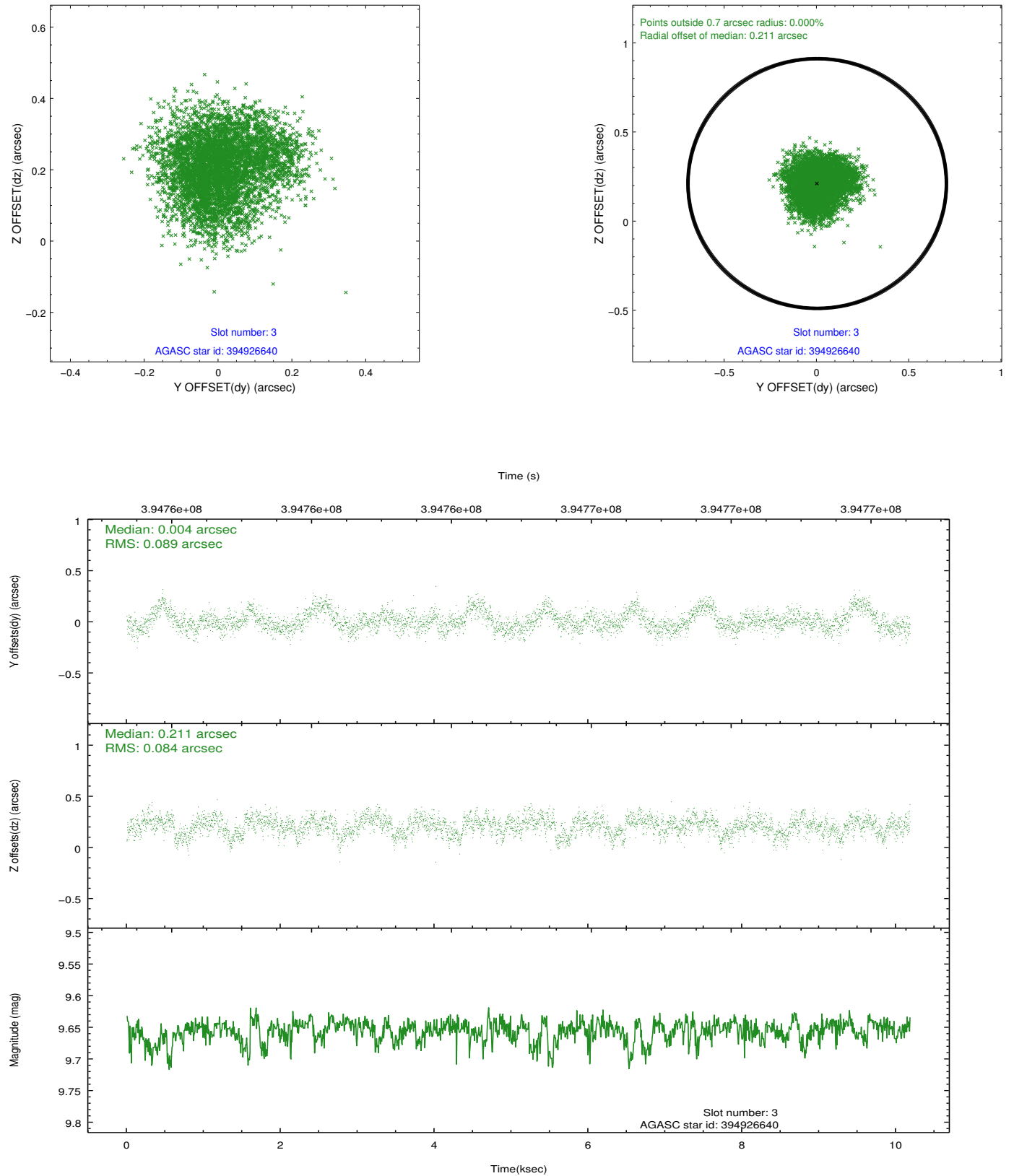


Slot Statistics

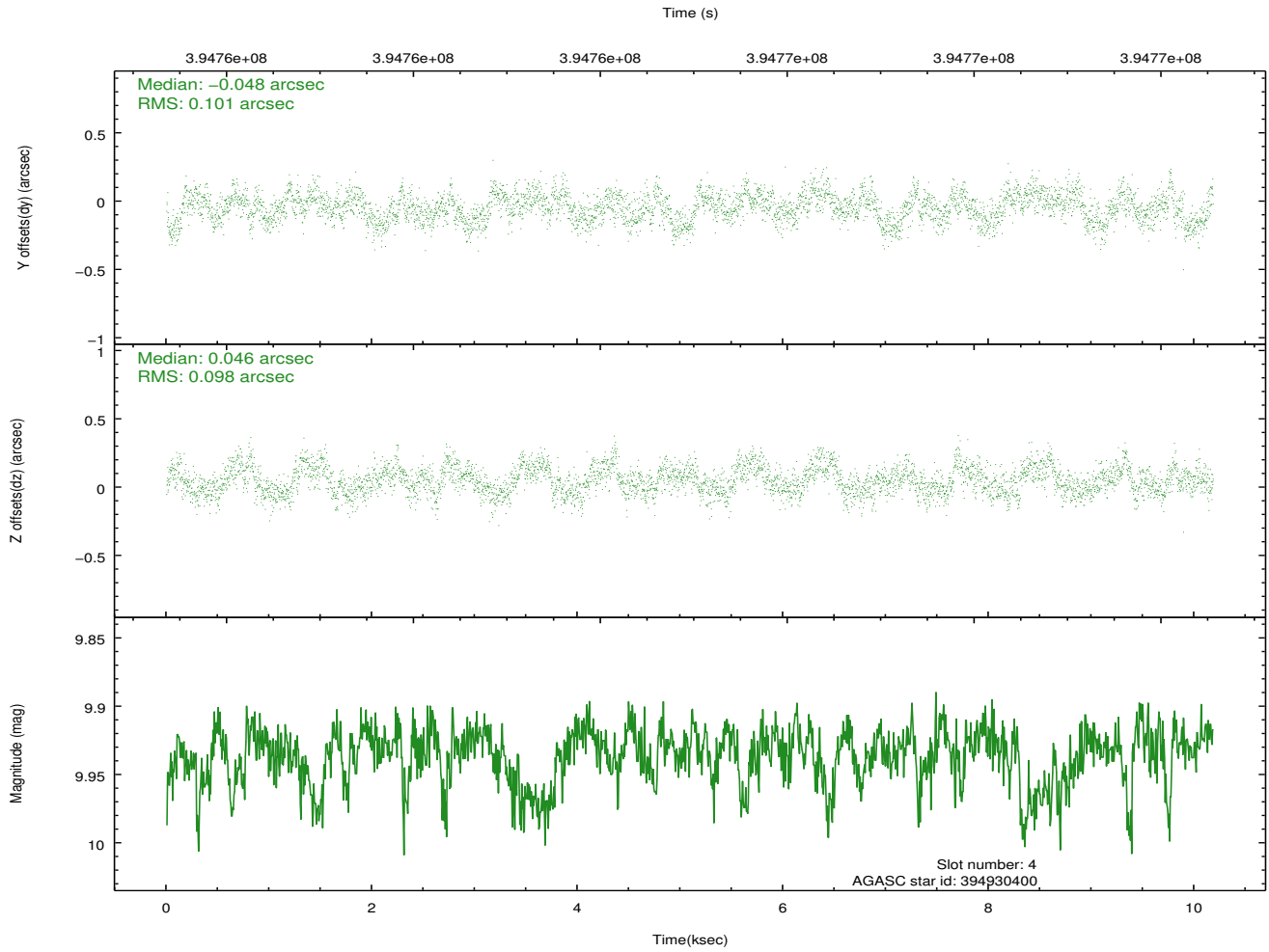
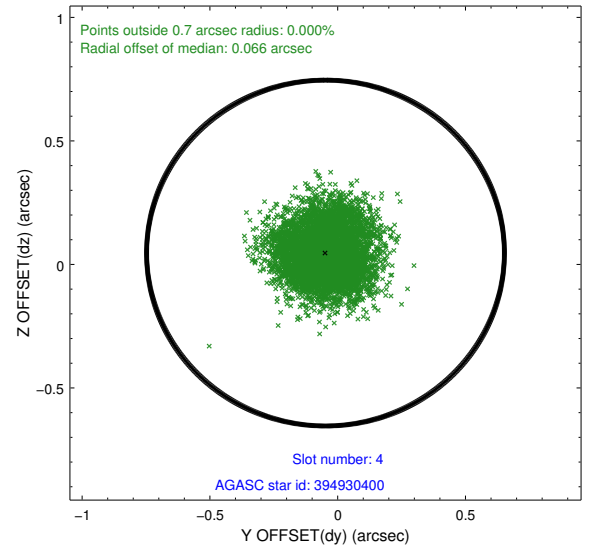
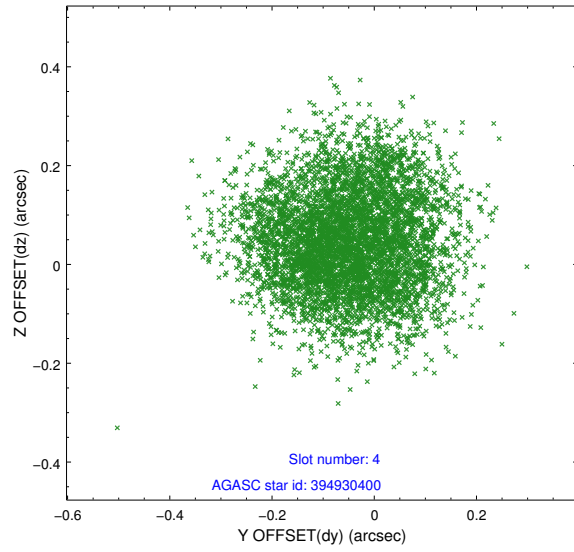
slot	status	id	mag	n_pts	med_dy	med_dz	dr1	dr2	ra	dec	mean_y	mean_z
0	FID	ACIS-S-2	6.89	2483	-0.126	-0.075	0.009	0.017	0.000000	0.000000	-771.64	-1740.75
1	FID	ACIS-S-4	6.97	2484	0.153	0.066	0.007	0.012	0.000000	0.000000	2141.73	167.26
2	FID	ACIS-S-6	7.11	2484	-0.055	0.016	0.007	0.012	0.000000	0.000000	391.14	805.24
3	GUIDE	394926640	9.65	4956	0.004	0.211	0.132	0.205	173.878475	39.896177	524.22	-389.20
4	GUIDE	394930400	9.94	4958	-0.048	0.046	0.154	0.234	174.519491	39.555849	1565.30	1499.35
5	GUIDE	394931512	7.91	4967	0.027	-0.571	0.074	0.121	174.735608	40.251854	-988.95	1829.37
6	GUIDE	394936032	9.94	4957	0.077	-0.049	0.151	0.241	173.252475	39.598794	1751.70	-2014.39
7	GUIDE	394928496	9.70	4963	-0.065	0.362	0.148	0.236	174.051572	40.654214	-2237.83	-182.84

2.4 Star Slots

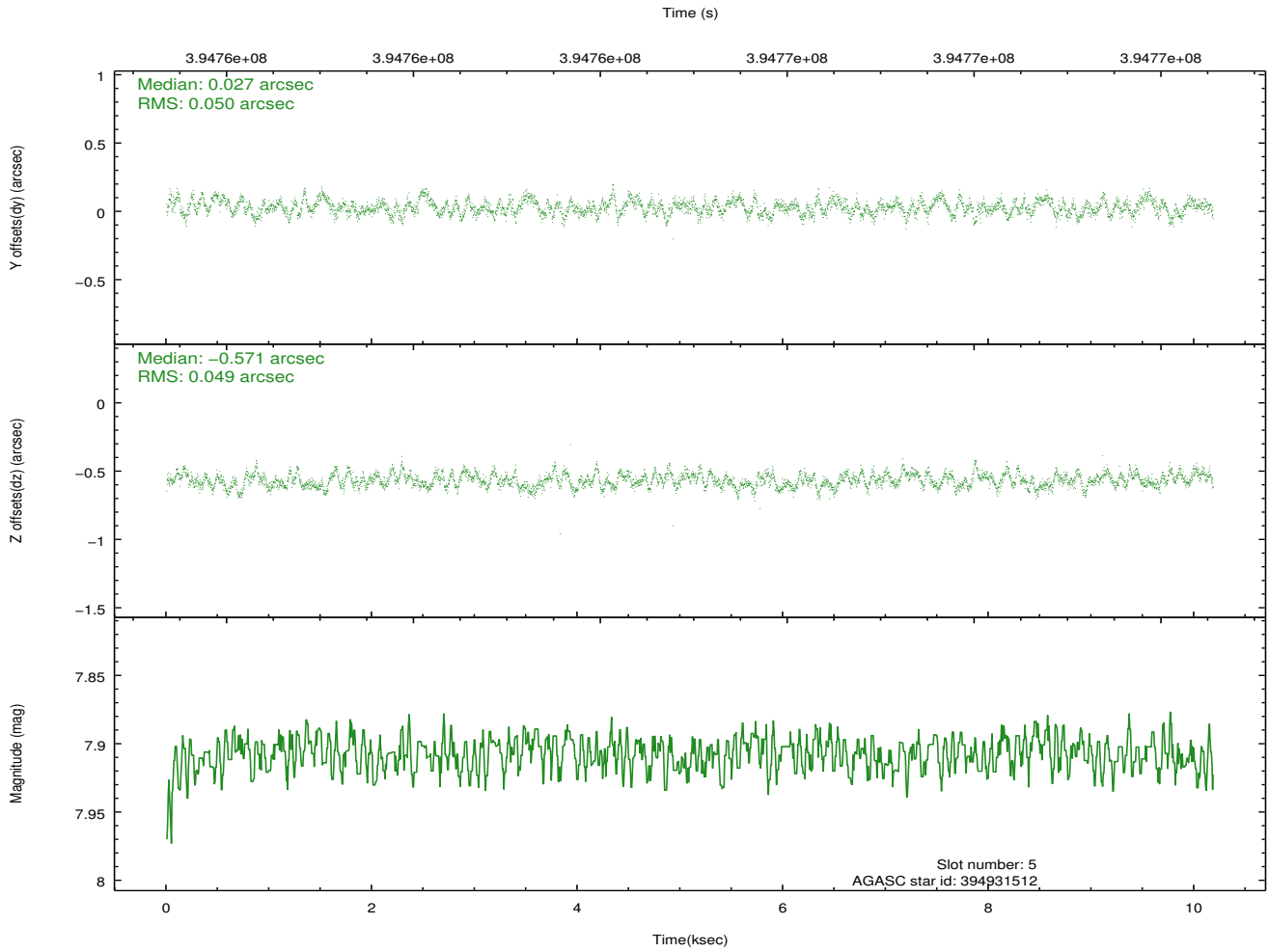
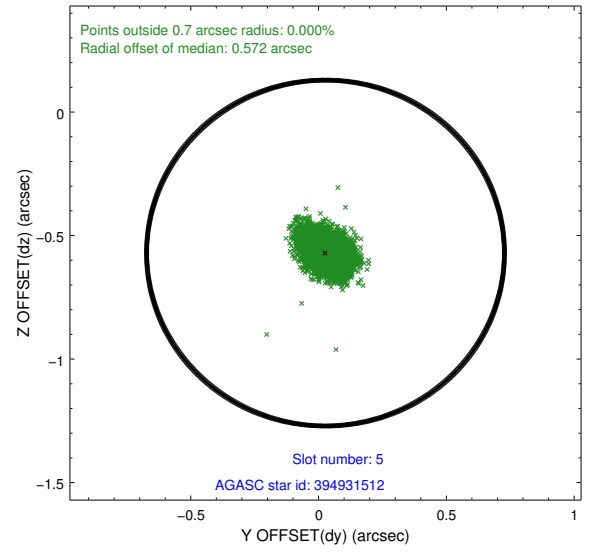
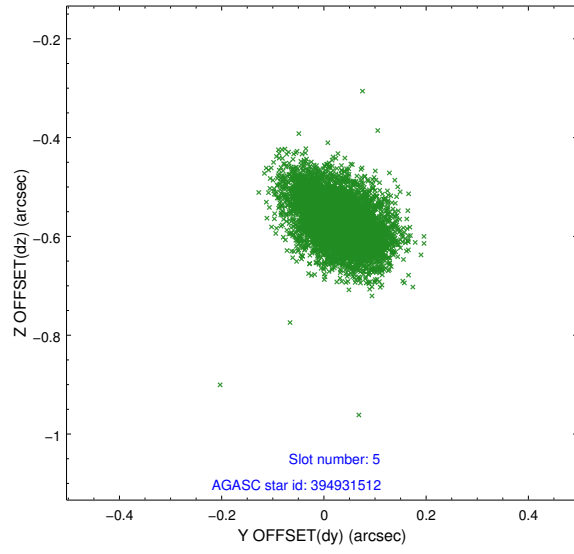
2.4.1 Slot 3



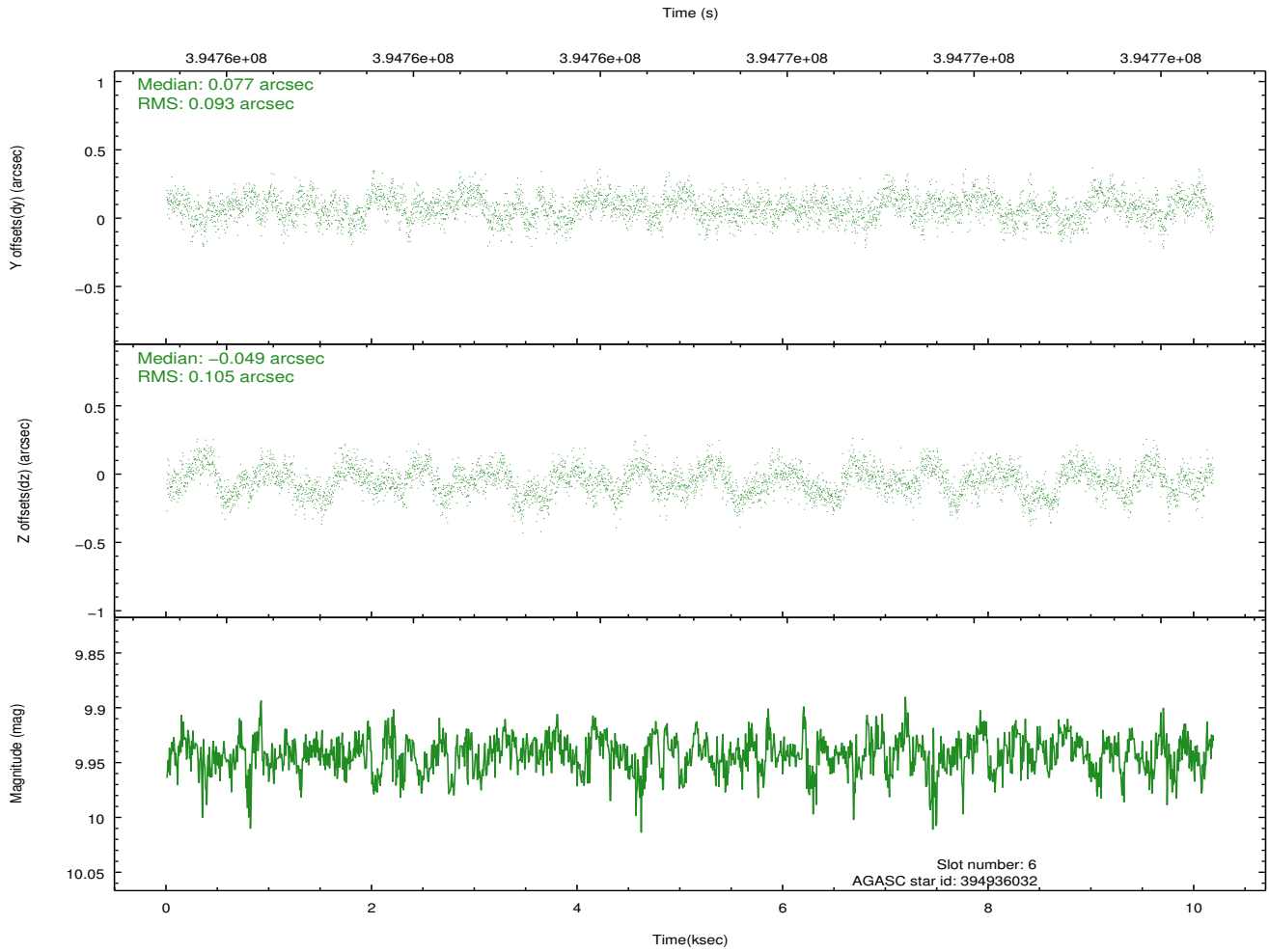
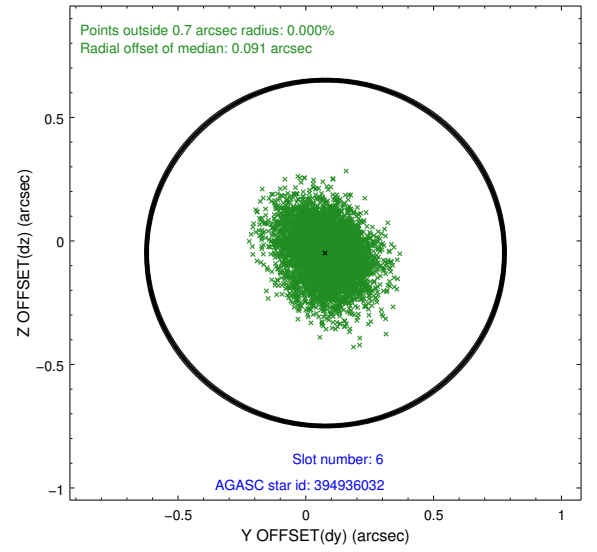
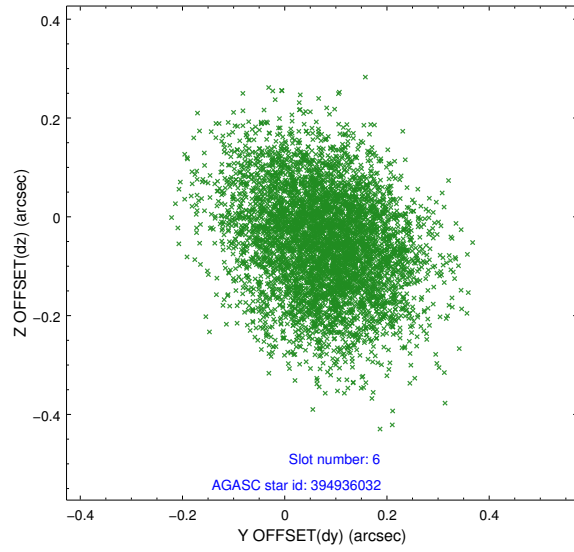
2.4.2 Slot 4



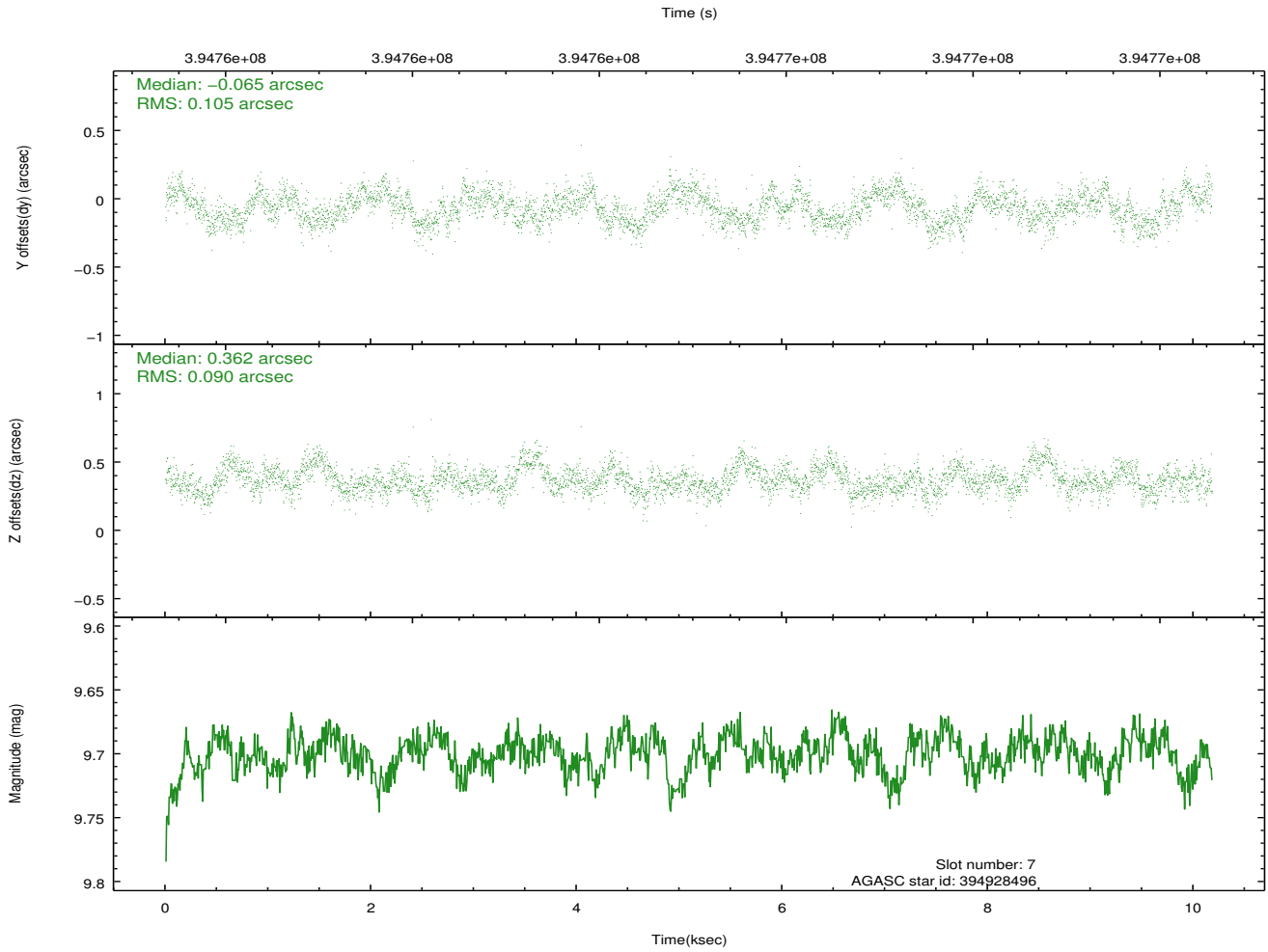
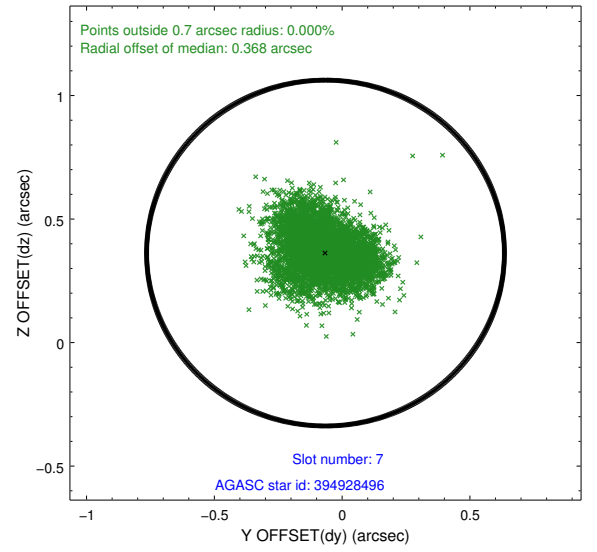
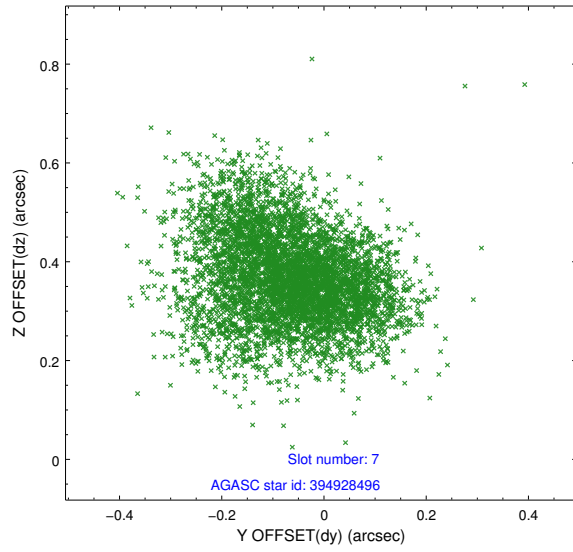
2.4.3 Slot 5



2.4.4 Slot 6

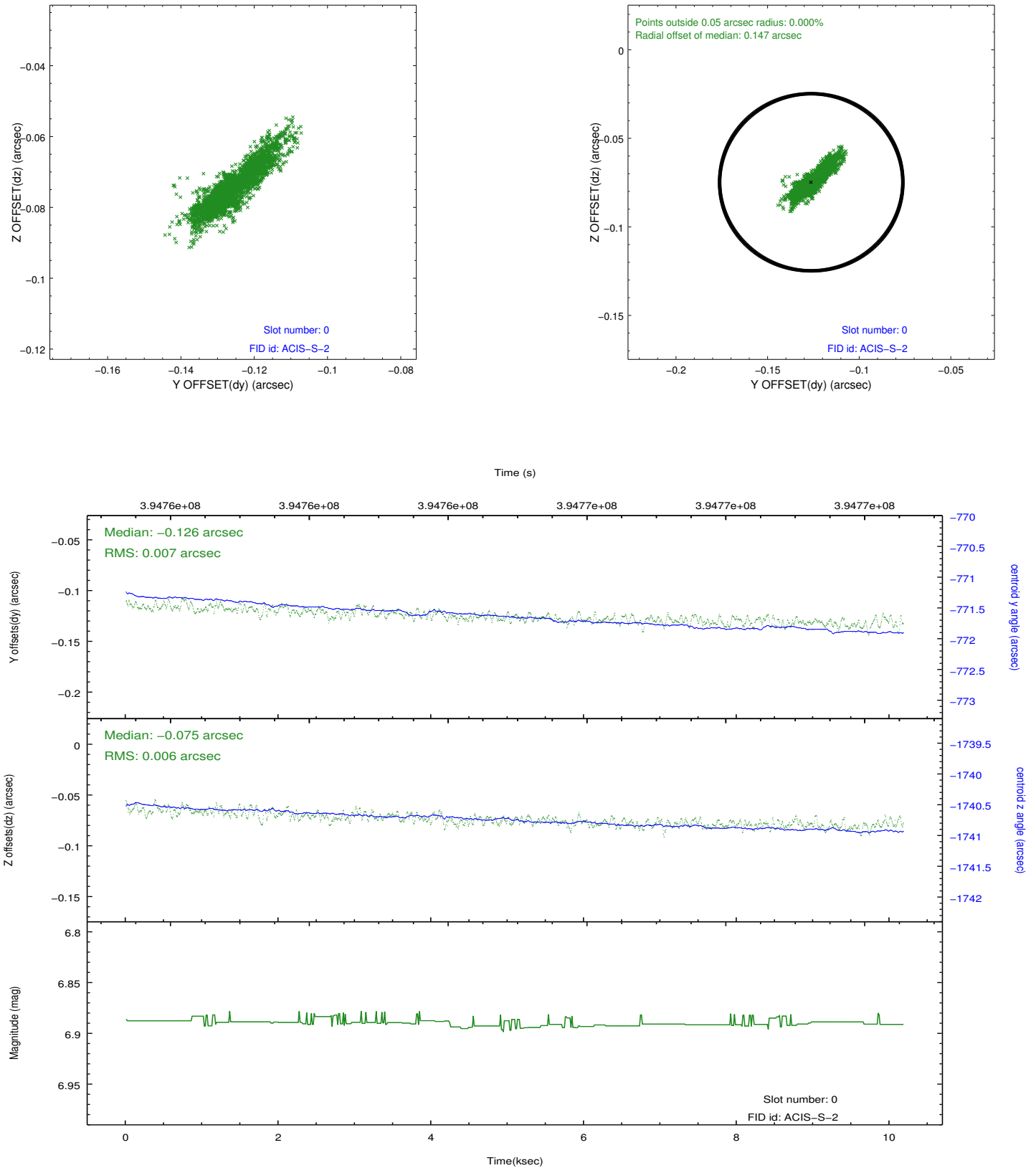


2.4.5 Slot 7

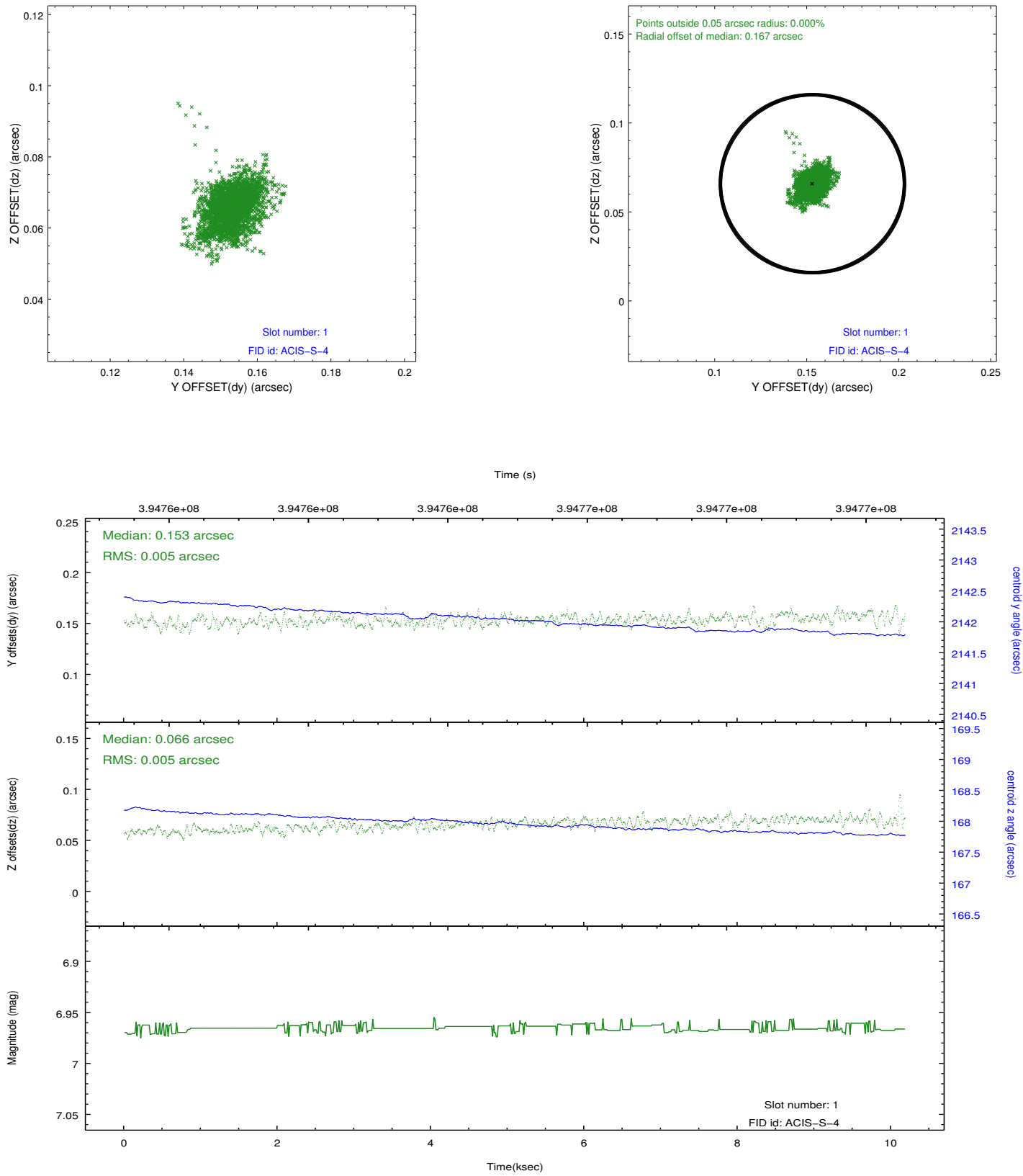


2.5 FID Slots

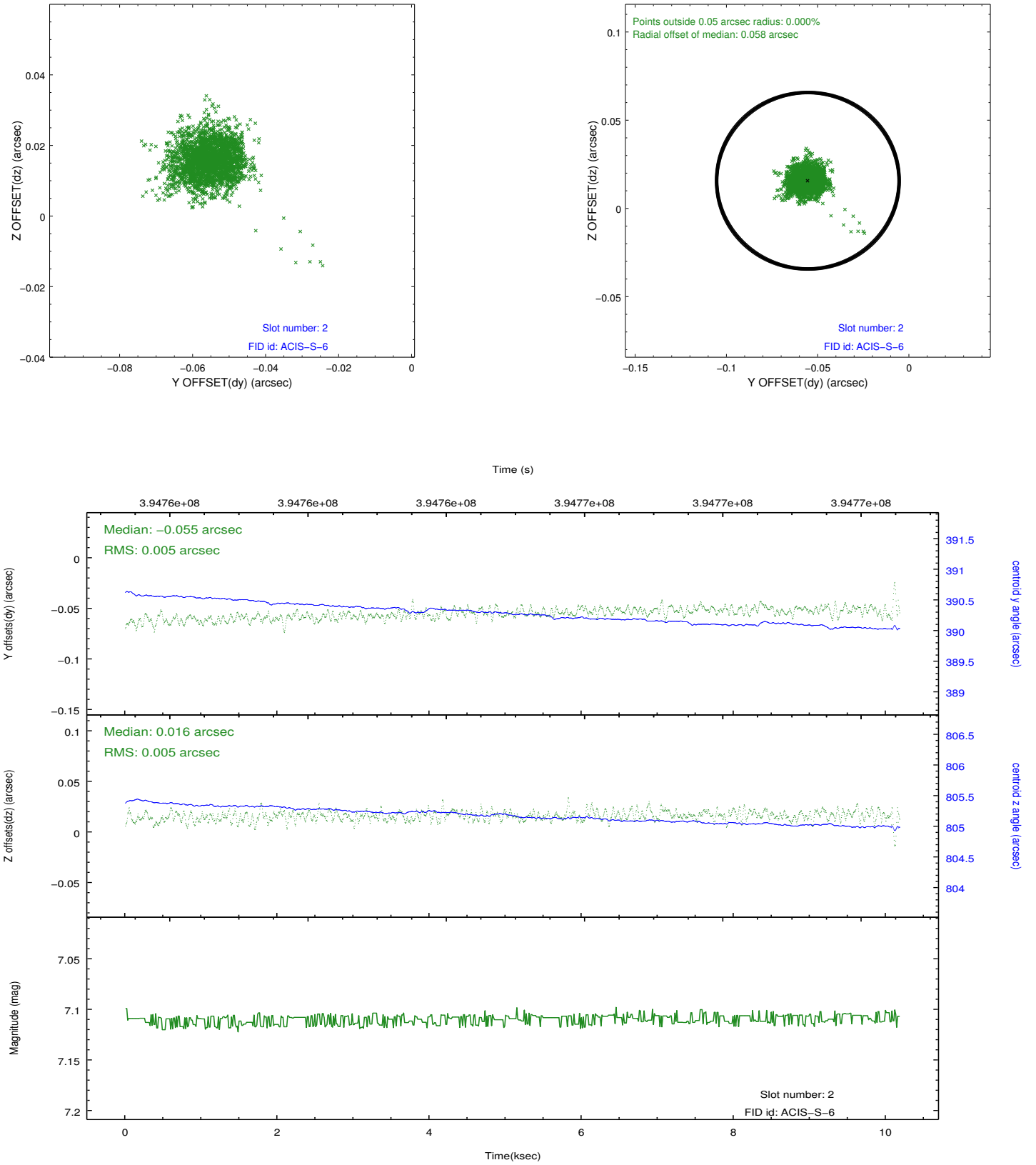
2.5.1 Slot 0



2.5.2 Slot 1



2.5.3 Slot 2



A Summary

A.1 Status

V&V Scientist	Jen Lauer
V&V Date (YYYY-MM-DD)	2012.07.06
V&V Edition	1
V&V Disposition and Status	OK
V&V Charge Time	10.036806032002

A.2 Comments