

V&V Reference Report

L2 ASCDS Version : 8.4.5

Observation 13191 - L2 Version 2
Chandra X-Ray Center

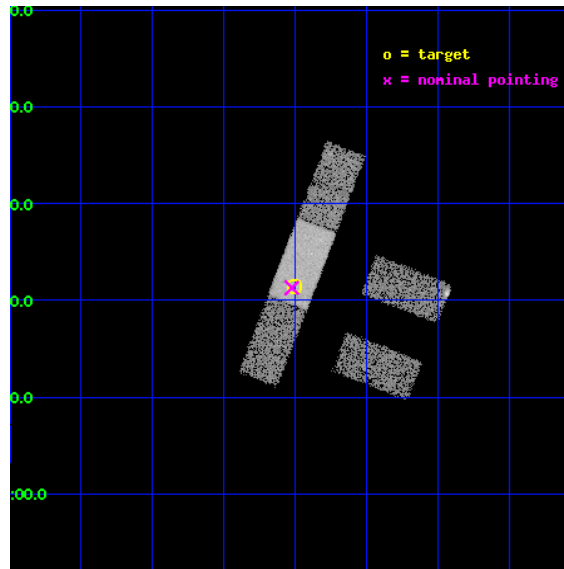
L2 Processing Date : Jul 7 2012

Contents

1	Front	2
2	OBI	3
2.1	OBI	3
2.1.1	Images	3
2.1.2	Bias	3
2.1.3	Parameters	4
2.1.4	Events	4
2.2	Compared Parameters	5
2.3	Aspect	6
2.4	Star Slots	9
2.4.1	Slot 3	9
2.4.2	Slot 4	10
2.4.3	Slot 5	11
2.4.4	Slot 6	12
2.4.5	Slot 7	13
2.5	FID Slots	14
2.5.1	Slot 0	14
2.5.2	Slot 1	15
2.5.3	Slot 2	16
A	Summary	17
A.1	Status	17
A.2	Comments	17

1 Front

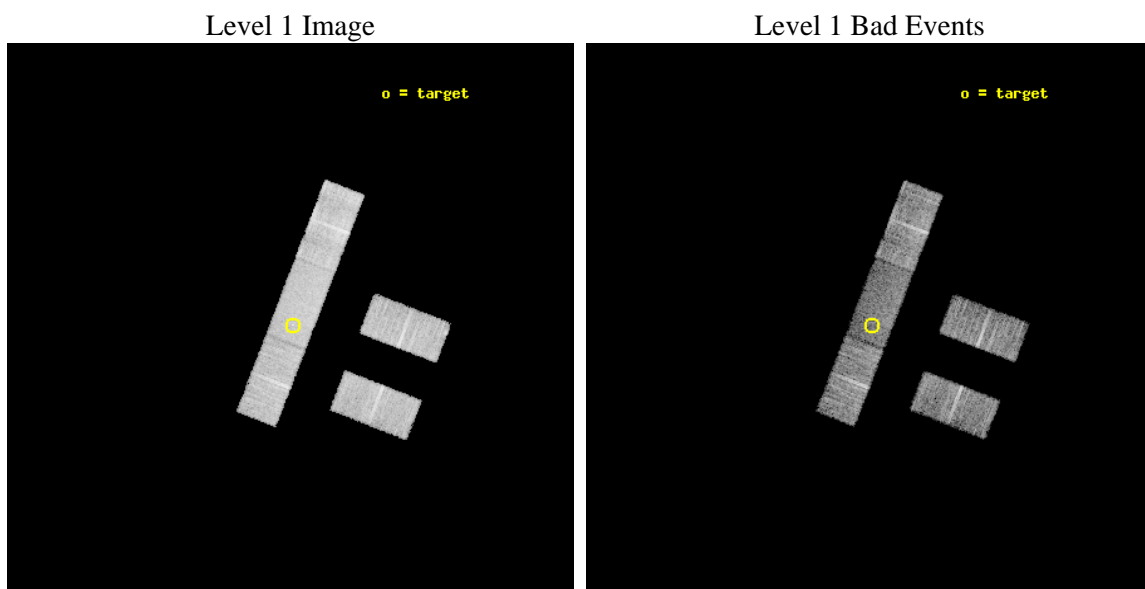
seq_num	702125	Sequence number
obs_id	13191	Observation id
title	The Size of Quasar Non-Thermal/X-ray Emission Regions	Proposal tit
observer	Prof. Christopher Kochanek	Principal investigator
object	Q2237+0305	Source name
dtcycle	0	
cycle	P	events from which exps? Prim/Second/Both
ra_targ	340.12625	Observer's specified target RA [deg]
dec_targ	3.358	Observer's specified target Dec [deg]
ra_nom	340.13017161587	Nominal RA [deg]
dec_nom	3.3550769060883	Nominal Dec [deg]
roll_nom	291.1563869217	Nominal Roll [deg]
revision	2	Processing version of data
ontime	10065.278291821	Sum of GTIs [s]
livetime	9828.0183660895	Livetime [s]
ontime2	10065.114131808	Sum of GTIs [s]
ontime3	10065.196211815	Sum of GTIs [s]
ontime6	10065.237251818	Sum of GTIs [s]
ontime7	10065.278291821	Sum of GTIs [s]
ontime8	10065.155171812	Sum of GTIs [s]
l2events	35968	Number of level 2 events



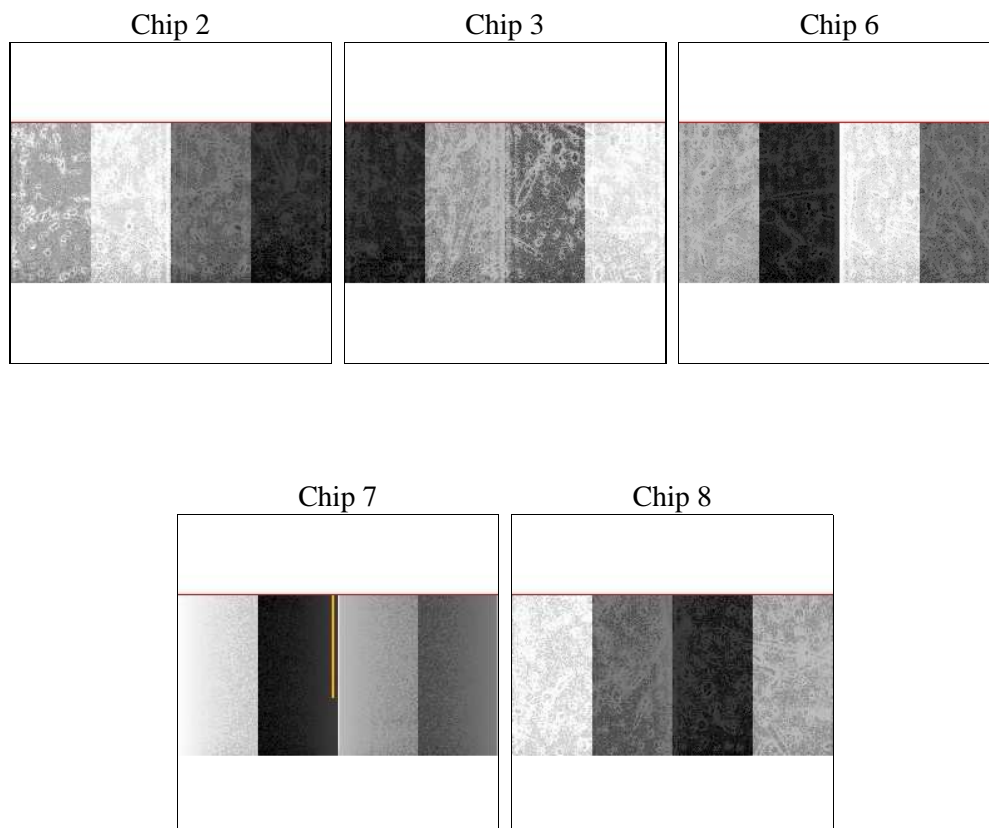
2 OBI

2.1 OBI

2.1.1 Images



2.1.2 Bias



2.1.3 Parameters

obi_num	0	Obi number	sched_exp_time	10000.000000	[s] Scheduled observation exposure time
ascdsver	8.4.5	Processing system revision	ontime	10065.278291821	Sum of GTIs [s]
caldsver	4.5.0	 	ontime2	10065.114131808	Sum of GTIs [s]
date	2012-07-07T16:39:08	Date and time of file creation	ontime3	10065.196211815	Sum of GTIs [s]
revision	2	Processing version of data	ontime6	10065.237251818	Sum of GTIs [s]
			ontime7	10065.278291821	Sum of GTIs [s]
			ontime8	10065.155171812	Sum of GTIs [s]
			l1events	212541	Number of level 1 events

2.1.4 Events

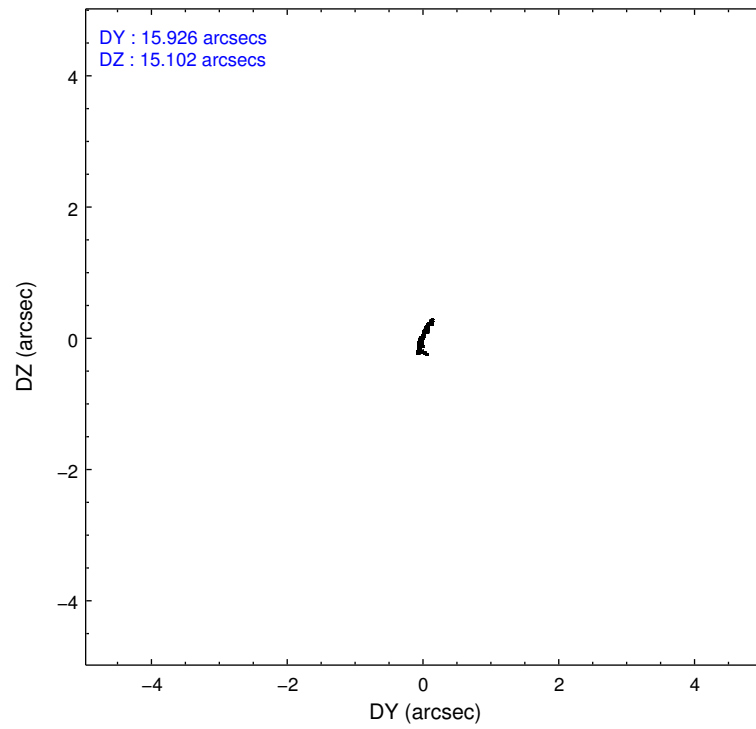
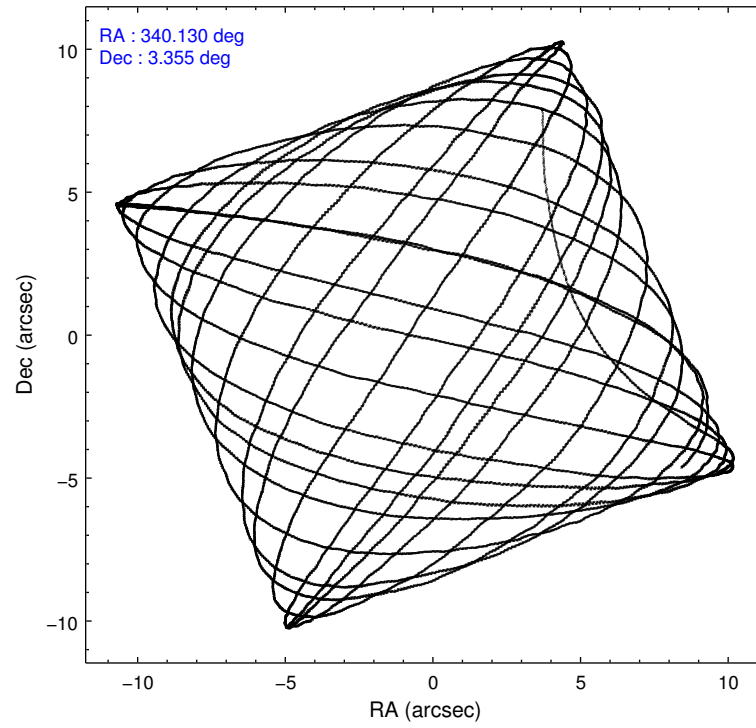
	ccd 2	ccd 3	ccd 6	ccd 7	ccd 8
level 1 events	36516	37709	39841	45834	52641
rejected events	32402	33445	35305	24556	39736
rejected %	88%	88%	88%	53%	75%

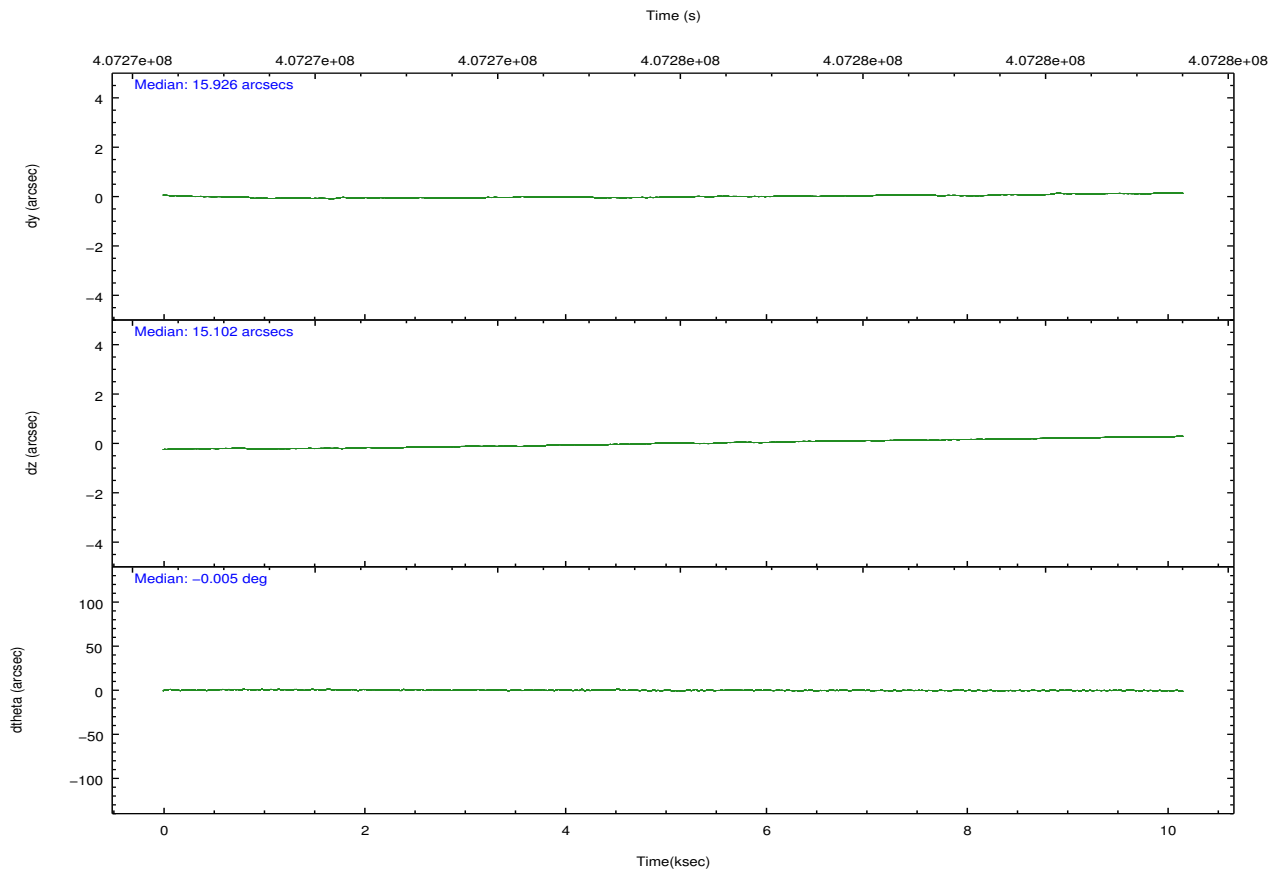
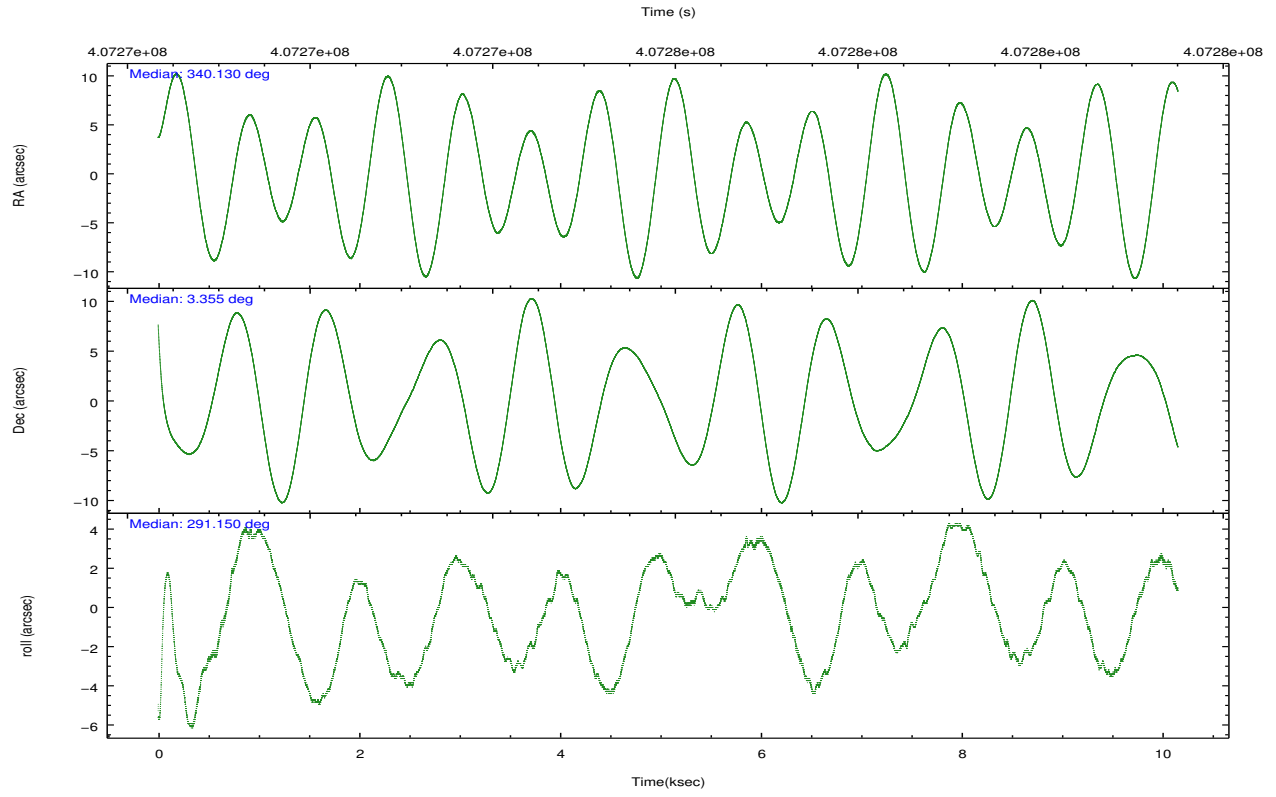
	ccd 2	ccd 3	ccd 6	ccd 7	ccd 8
grade 0 events	1363	1574	1464	2109	3806
	3%	4%	3%	4%	7%
grade 1 events	28	24	19	48	21
	0%	0%	0%	0%	0%
grade 2 events	1002	873	951	4466	2934
	2%	2%	2%	9%	5%
grade 3 events	528	551	555	2146	1355
	1%	1%	1%	4%	2%
grade 4 events	507	498	574	2067	1271
	1%	1%	1%	4%	2%
grade 5 events	1397	1692	1733	4855	2452
	3%	4%	4%	10%	4%
grade 6 events	715	769	995	10499	3542
	1%	2%	2%	22%	6%
grade 7 events	30976	31728	33550	19644	37260
	84%	84%	84%	42%	70%

2.2 Compared Parameters

Parameter	Planned	Actual	Parameter	Planned	Actual
Instrument	ACIS	ACIS	Obspar format version number	7	7
Detector	ACIS-23678	ACIS-23678	Obspar file type	PREDICTED	ACTUAL
Grating	NONE	NONE	Obspar update status	NONE	UPDATED
Data mode	VFAINT	VFAINT	CCD I0 on	N	N
Observation mode	POINTING	POINTING	CCD I1 on	N	N
[deg] Pointing RA	340.108553	340.1301716158661	CCD I2 on	O4	Y
[deg] Pointing Dec	3.371931	3.355076906088312	CCD I3 on	O3	Y
[deg] Pointing Roll	291.001047	291.1563869217015	CCD S0 on	N	N
[mm] SIM focus pos	-0.684267	-0.6828225247311905	CCD S1 on	N	N
[mm] SIM defocus	0	0.001444936568705701	CCD S2 on	O1	Y
[mm] SIM translation stage pos	-190.132523	-190.1425803651734	CCD S3 on	Y	Y
[mm] SIM translation stage offset	0	0.01005778216563158	CCD S4 on	O2	Y
[s] Observation start time (MET)	407270996.184000	407270048.73252	CCD S5 on	N	N
Observation start date	2010-11-27T18:48:50	2010-11-27T18:34:08	Number of optional ACIS chips dropped	0	0
[s] Observation end time (MET)	407280996.184000	407281622.52061	On-chip summing requested	N	N
Observation end date	2010-11-27T21:35:30	2010-11-27T21:47:02	Subarray requested	CUSTOM	1/2
Read mode	TIMED	TIMED	Subarray start row	257	257
			Subarray row count	512	512
			Alternating exposures requested	N	N
			[s] Primary exposure time	0.000000	1.7

2.3 Aspect



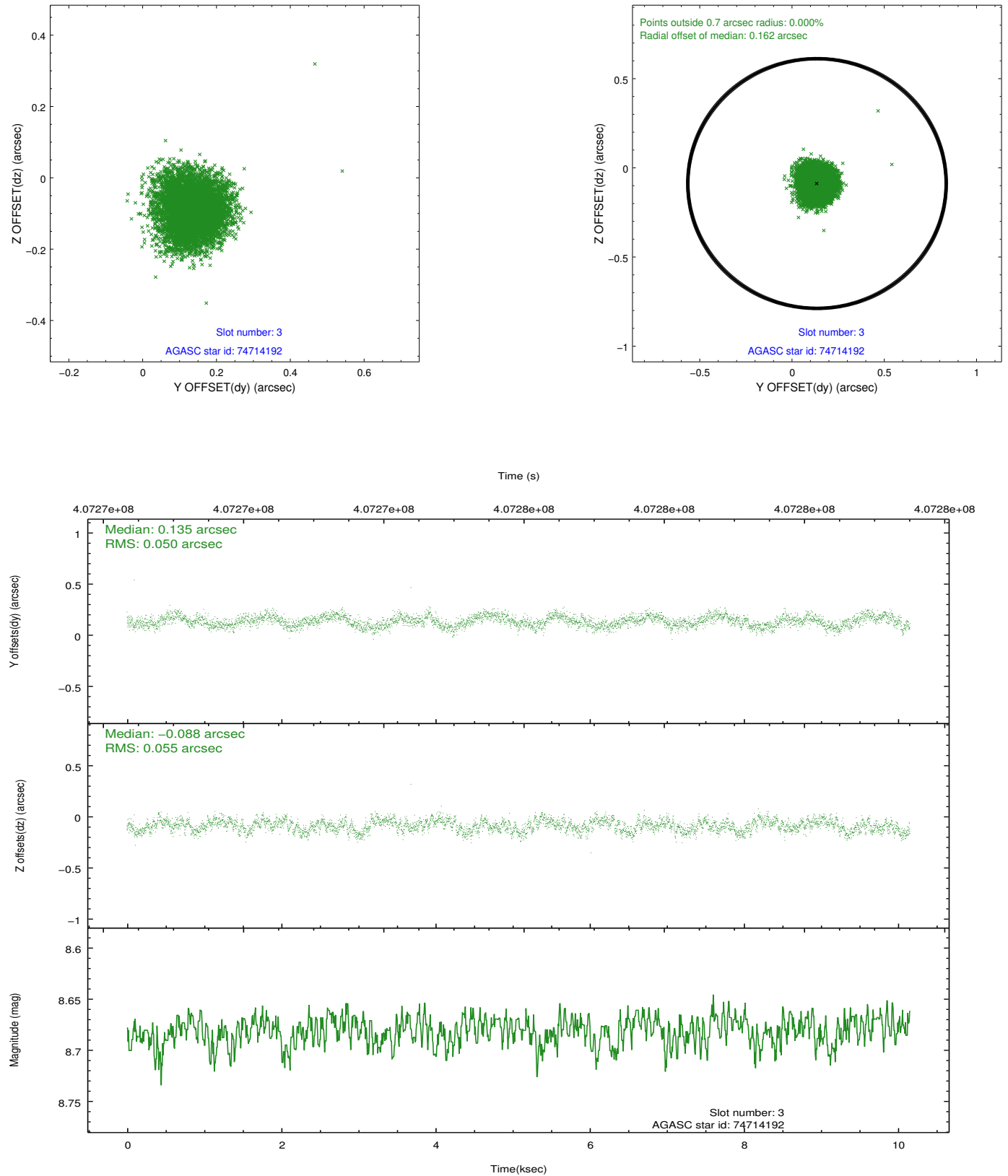


Slot Statistics

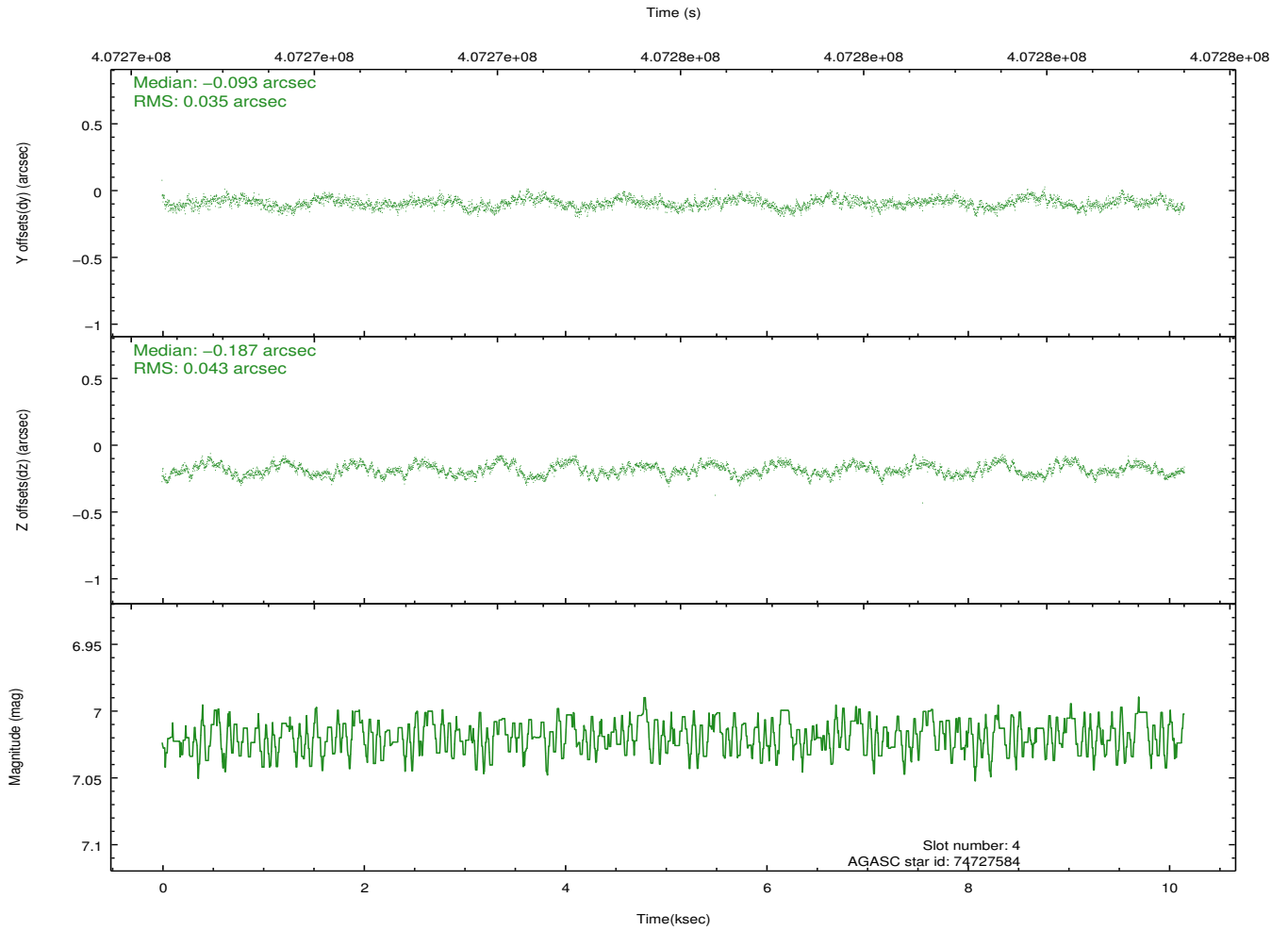
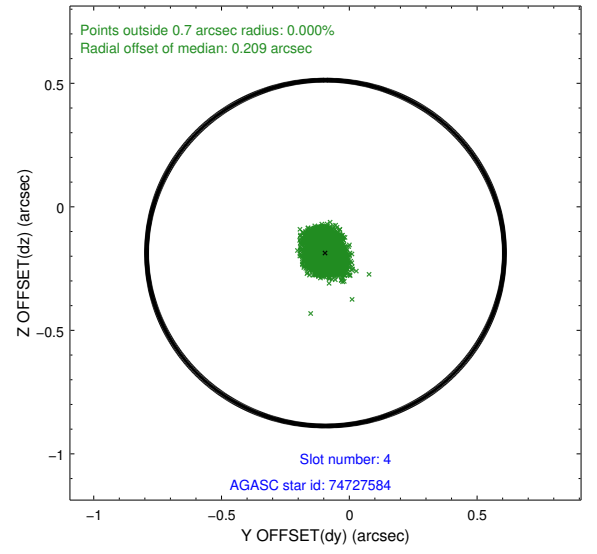
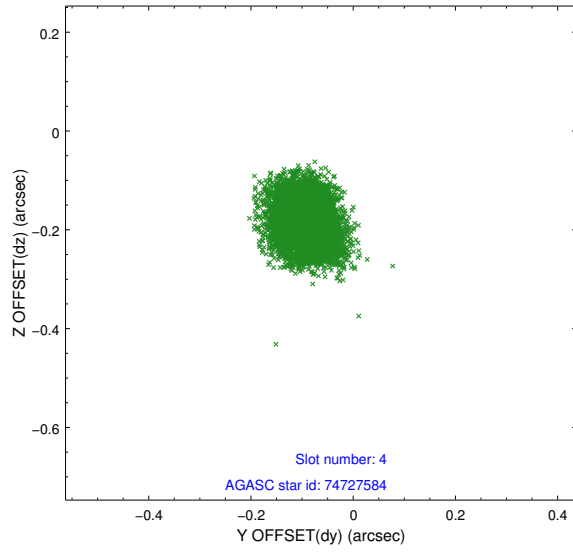
slot	status	id	mag	n_pts	med_dy	med_dz	dr1	dr2	ra	dec	mean_y	mean_z
0	FID	ACIS-S-2	6.95	2478	-0.106	-0.024	0.007	0.012	0.000000	0.000000	-769.02	-1736.46
1	FID	ACIS-S-4	7.03	2478	0.196	0.058	0.006	0.011	0.000000	0.000000	2144.30	171.59
2	FID	ACIS-S-5	7.06	2478	-0.120	-0.025	0.007	0.012	0.000000	0.000000	-1821.23	165.73
3	GUIDE	74714192	8.68	4948	0.135	-0.088	0.081	0.124	339.623837	3.342441	-525.04	-1664.19
4	GUIDE	74727584	7.02	4955	-0.093	-0.187	0.060	0.093	339.633744	3.463732	-920.19	-1474.75
5	GUIDE	74842128	8.53	4948	0.008	-0.042	0.087	0.131	340.118134	3.132788	816.26	-276.79
6	GUIDE	74854992	8.29	4889	-0.081	-0.036	0.067	0.106	340.342808	3.603730	-477.08	1084.63
7	GUIDE	74855640	8.83	4943	0.045	0.357	0.181	0.245	340.341123	3.746937	-960.99	1264.45

2.4 Star Slots

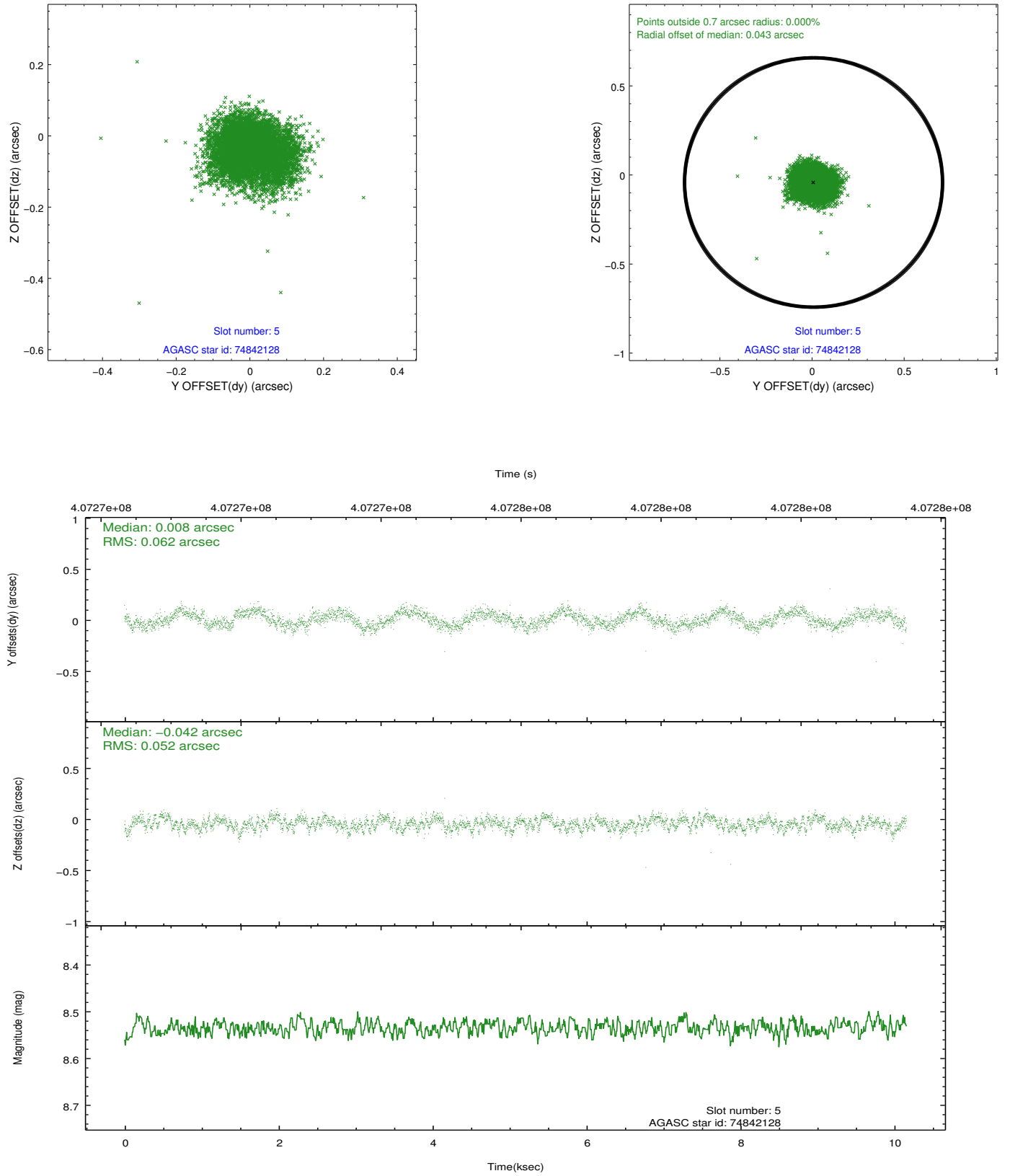
2.4.1 Slot 3



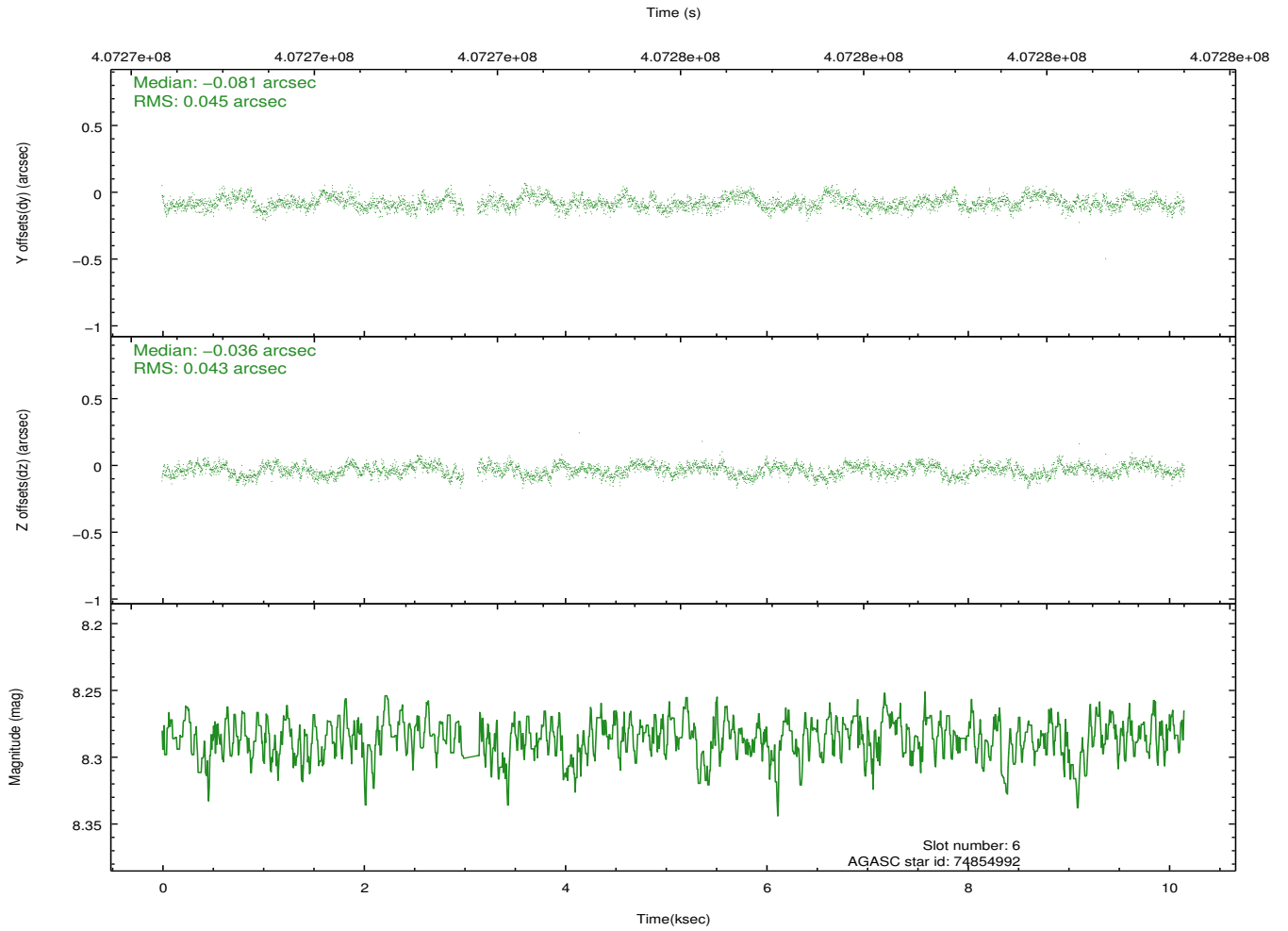
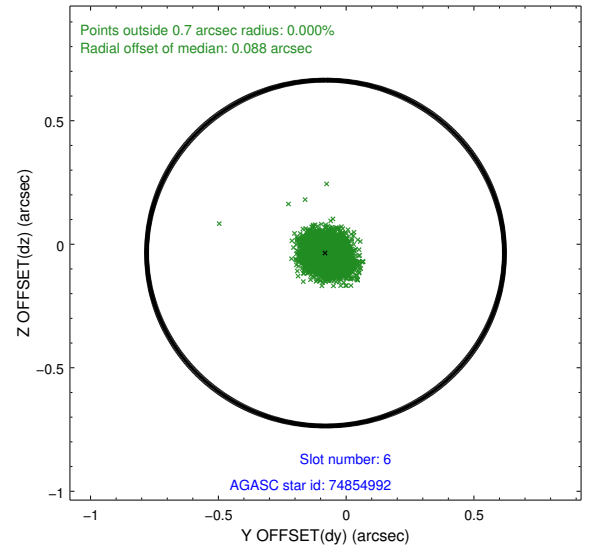
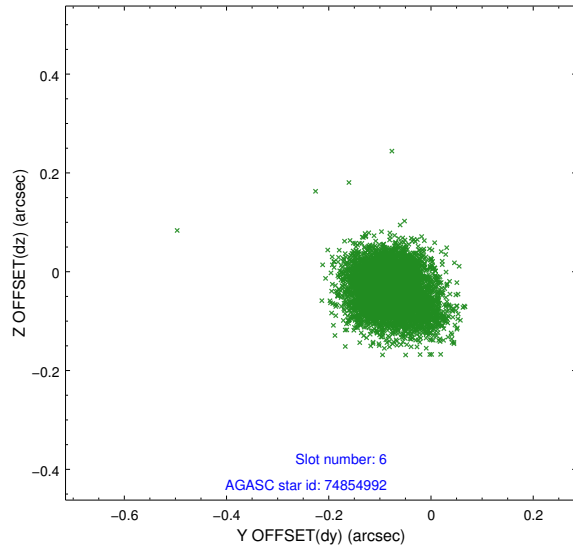
2.4.2 Slot 4



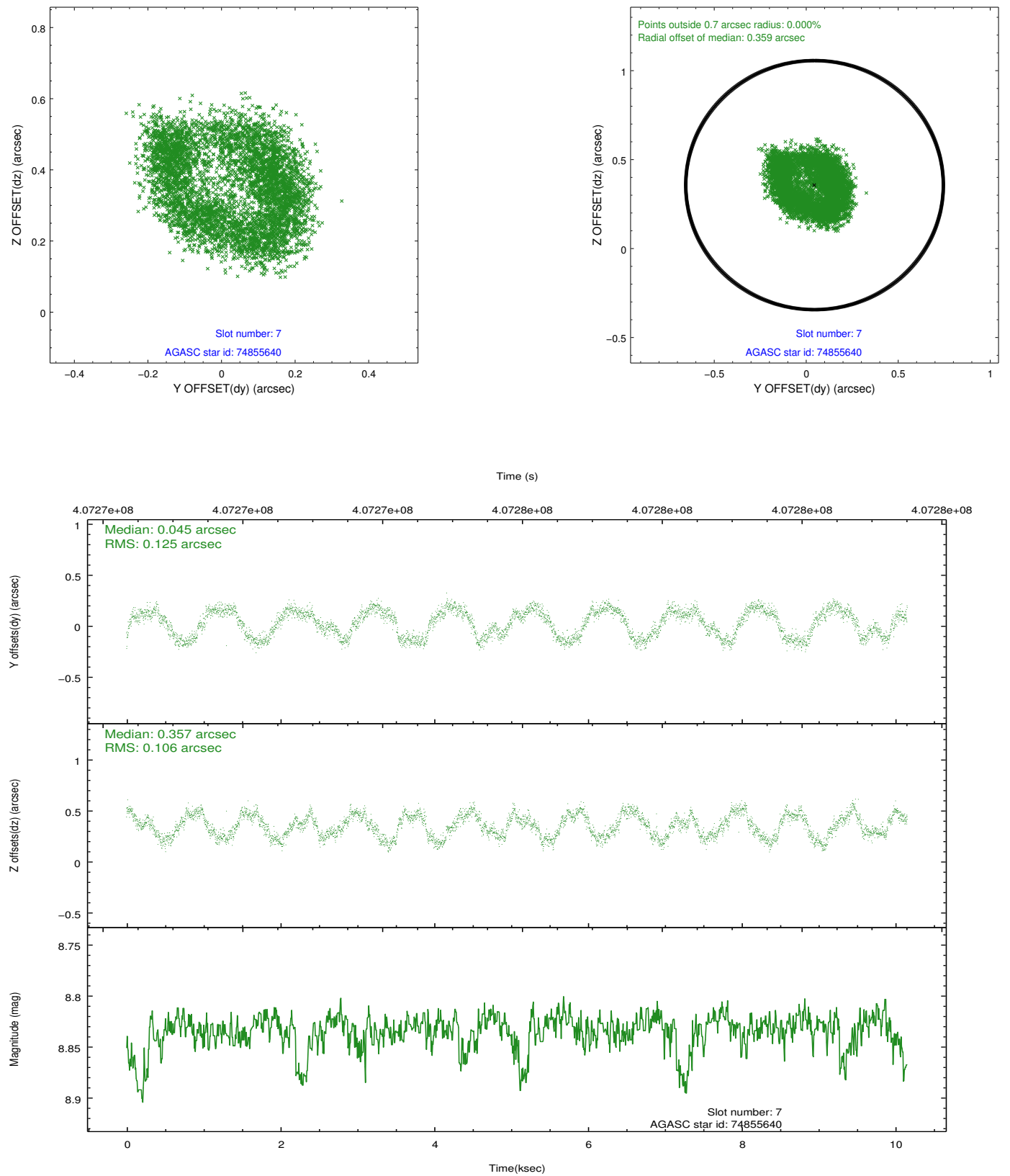
2.4.3 Slot 5



2.4.4 Slot 6

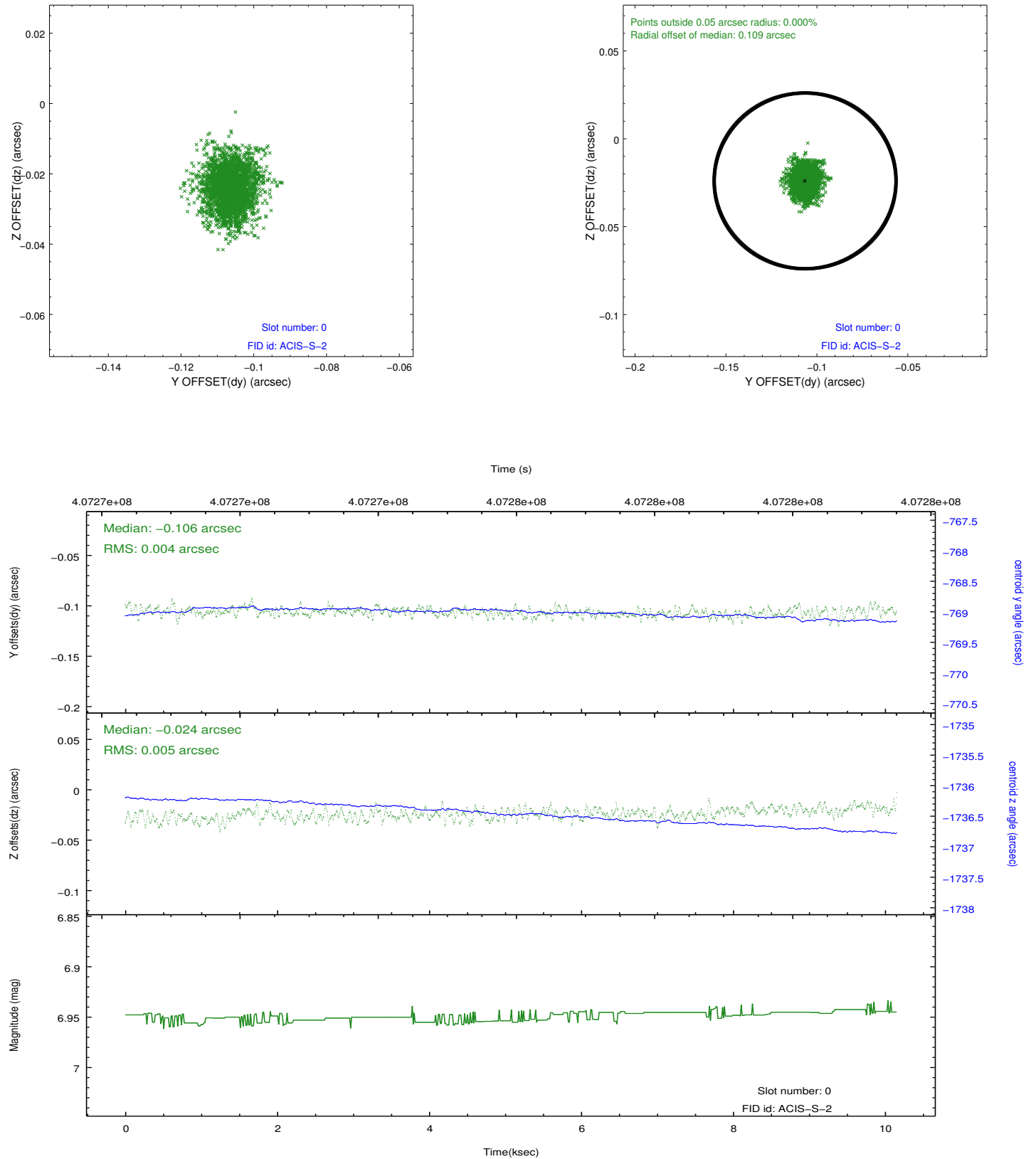


2.4.5 Slot 7

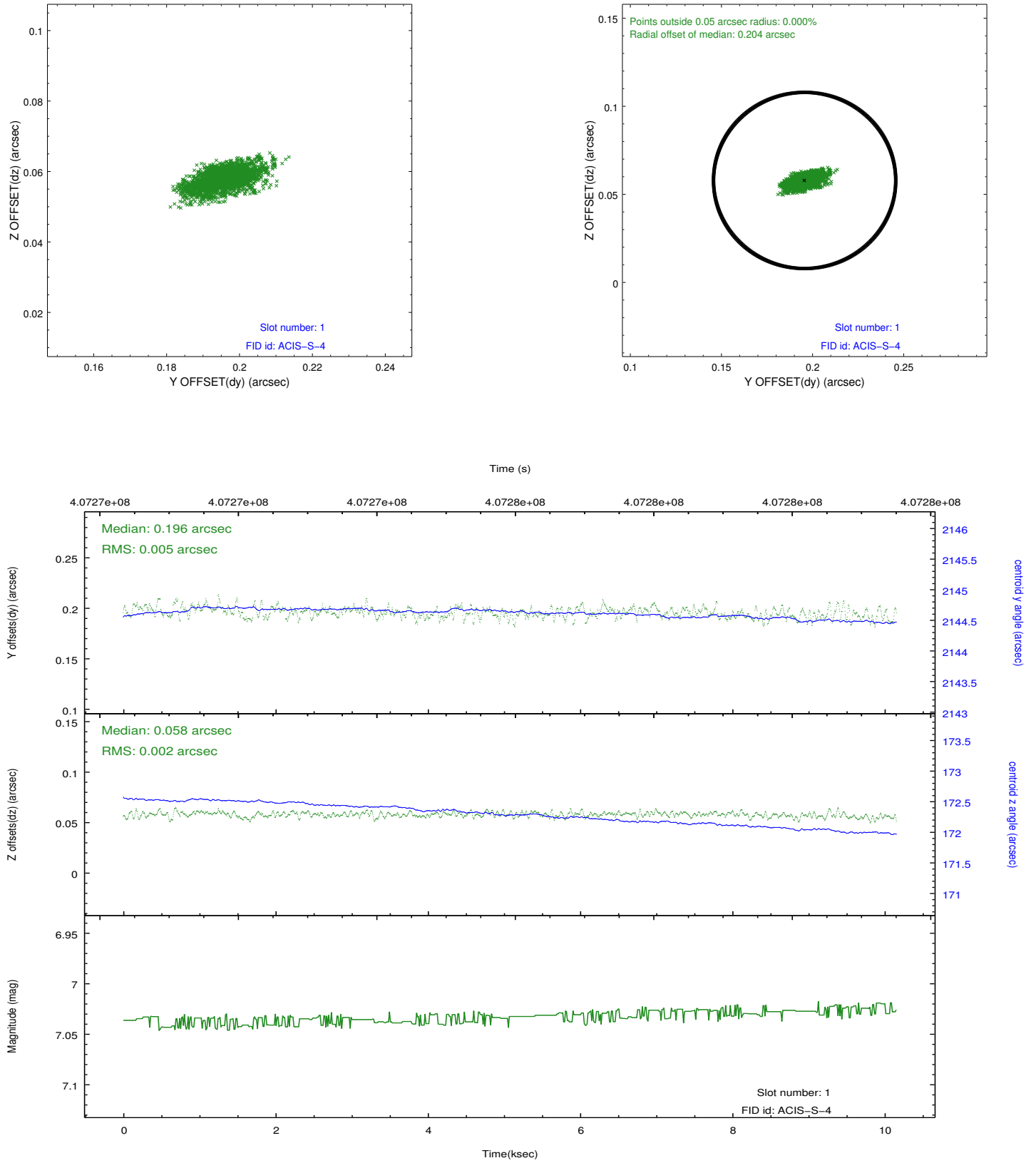


2.5 FID Slots

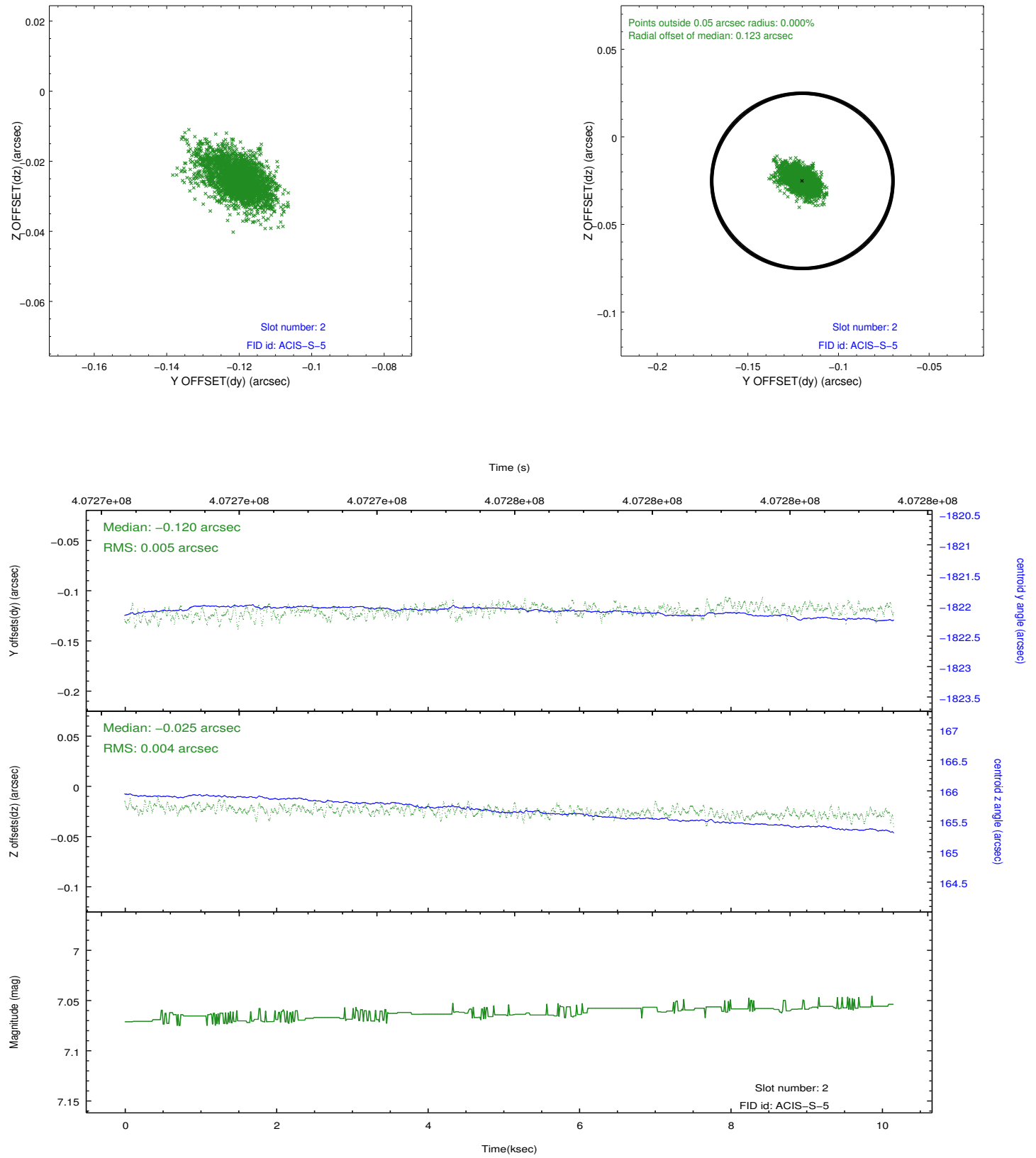
2.5.1 Slot 0



2.5.2 Slot 1



2.5.3 Slot 2



A Summary

A.1 Status

V&V Scientist	Jen Lauer
V&V Date (YYYY-MM-DD)	2012.07.17
V&V Edition	1
V&V Disposition and Status	OK
V&V Charge Time	10.065278283298

A.2 Comments