

V&V Reference Report

L2 ASCDS Version : 8.4.5

Observation 12107 - L2 Version 2
Chandra X-Ray Center

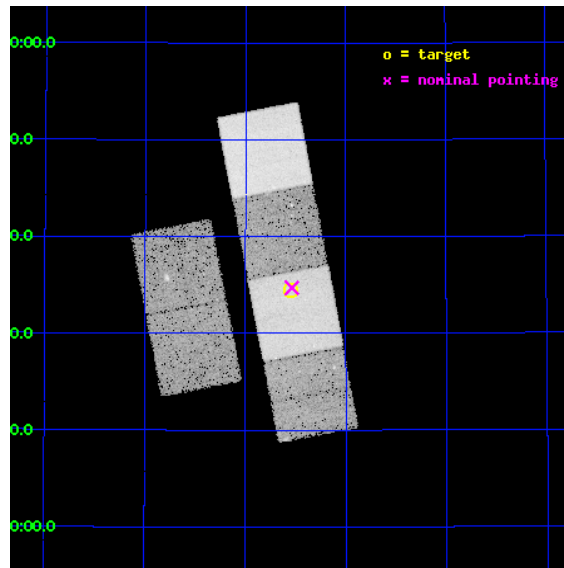
L2 Processing Date : Jun 21 2012

Contents

1	Front	2
2	OBI	3
2.1	OBI	3
2.1.1	Images	3
2.1.2	Bias	3
2.1.3	Parameters	4
2.1.4	Events	4
2.2	Compared Parameters	5
2.3	Aspect	6
2.4	Star Slots	9
2.4.1	Slot 3	9
2.4.2	Slot 4	10
2.4.3	Slot 5	11
2.4.4	Slot 6	12
2.4.5	Slot 7	13
2.5	FID Slots	14
2.5.1	Slot 0	14
2.5.2	Slot 1	15
2.5.3	Slot 2	16
A	Summary	17
A.1	Status	17
A.2	Comments	17

1 Front

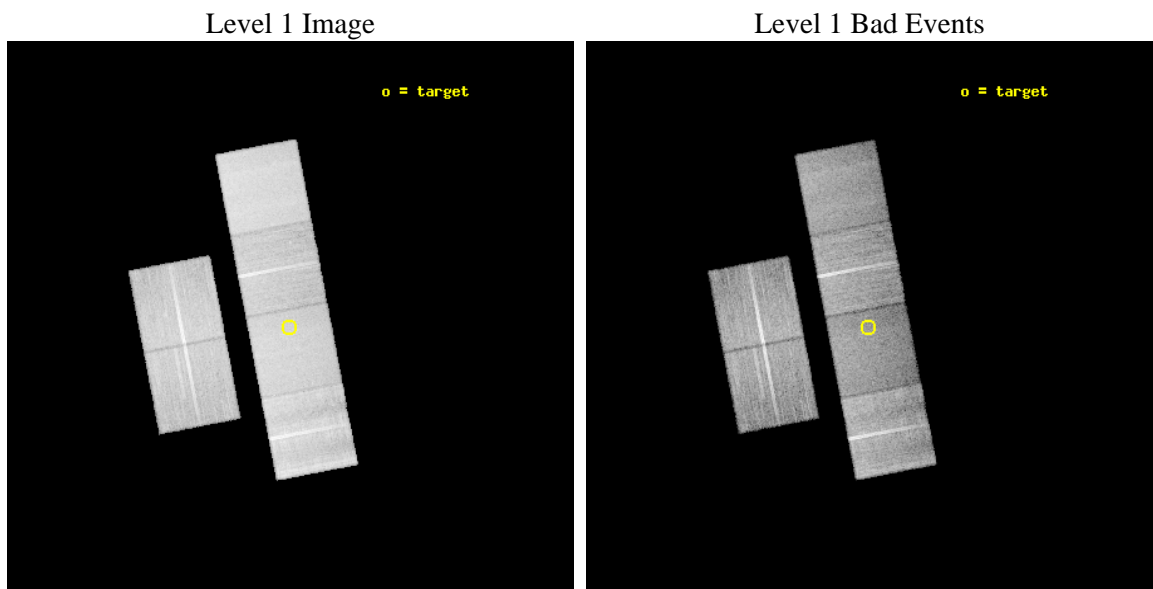
seq_num	702157	Sequence number
obs_id	12107	Observation id
title	The environmental and epoch dependence of radio-loud AGN feedback	
observer	Dr Judith Croston	Principal investigator
object	TOOT 1630+4534	Source name
dtcycle	0	
cycle	P	events from which exps? Prim/Second/Both
ra_targ	247.636667	Observer's specified target RA [deg]
dec_targ	45.573889	Observer's specified target Dec [deg]
ra_nom	247.63417783063	Nominal RA [deg]
dec_nom	45.578416808794	Nominal Dec [deg]
roll_nom	79.158444173736	Nominal Roll [deg]
revision	2	Processing version of data
ontime	19043.199929118	Sum of GTIs [s]
livetime	18802.063465177	Livetime [s]
ontime2	19039.958928883	Sum of GTIs [s]
ontime3	19036.717948496	Sum of GTIs [s]
ontime5	19043.199929118	Sum of GTIs [s]
ontime6	19036.717928588	Sum of GTIs [s]
ontime7	19043.199929118	Sum of GTIs [s]
ontime8	19043.199929118	Sum of GTIs [s]
l2events	246833	Number of level 2 events



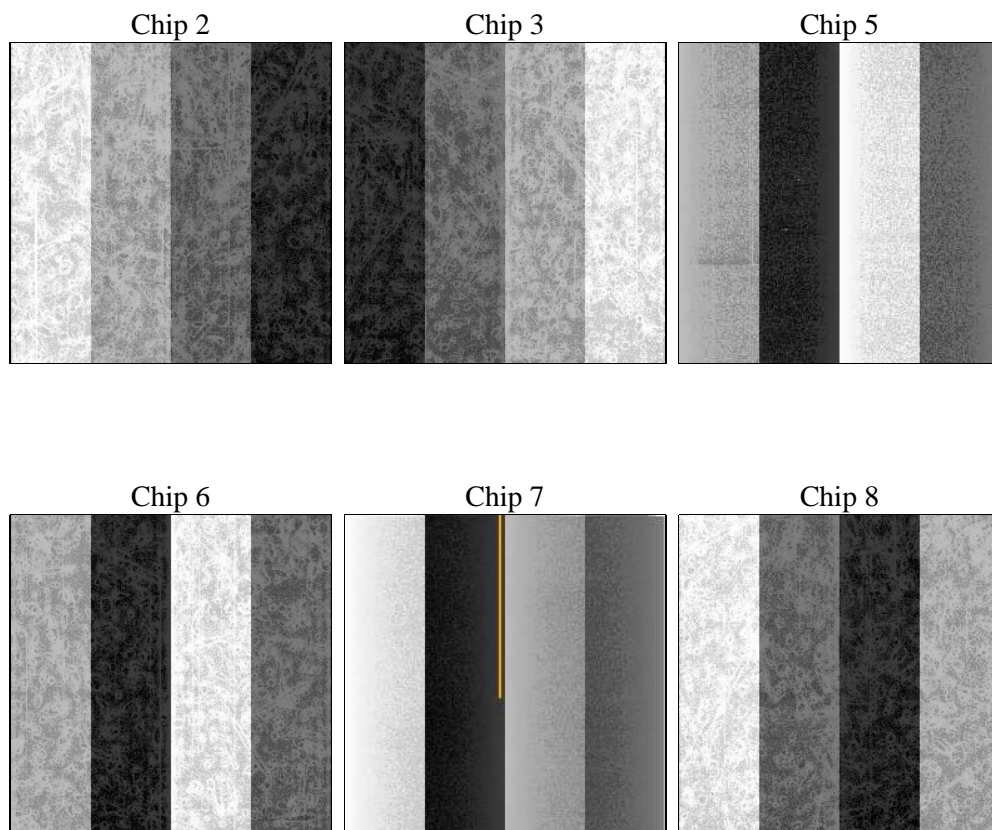
2 OBI

2.1 OBI

2.1.1 Images



2.1.2 Bias



2.1.3 Parameters

obi_num	1	Obi number	sched_exp_time	19000.000000	[s] Scheduled observation exposure time
ascdsver	8.4.5	Processing system revision	ontime	19043.199929118	Sum of GTIs [s]
caldsver	4.4.10	 	ontime2	19039.958928883	Sum of GTIs [s]
date	2012-06-21T15:38:21	Date and time of file creation	ontime3	19036.717948496	Sum of GTIs [s]
revision	2	Processing version of data	ontime5	19043.199929118	Sum of GTIs [s]
			ontime6	19036.717928588	Sum of GTIs [s]
			ontime7	19043.199929118	Sum of GTIs [s]
			ontime8	19043.199929118	Sum of GTIs [s]
			l1events	1084407	Number of level 1 events

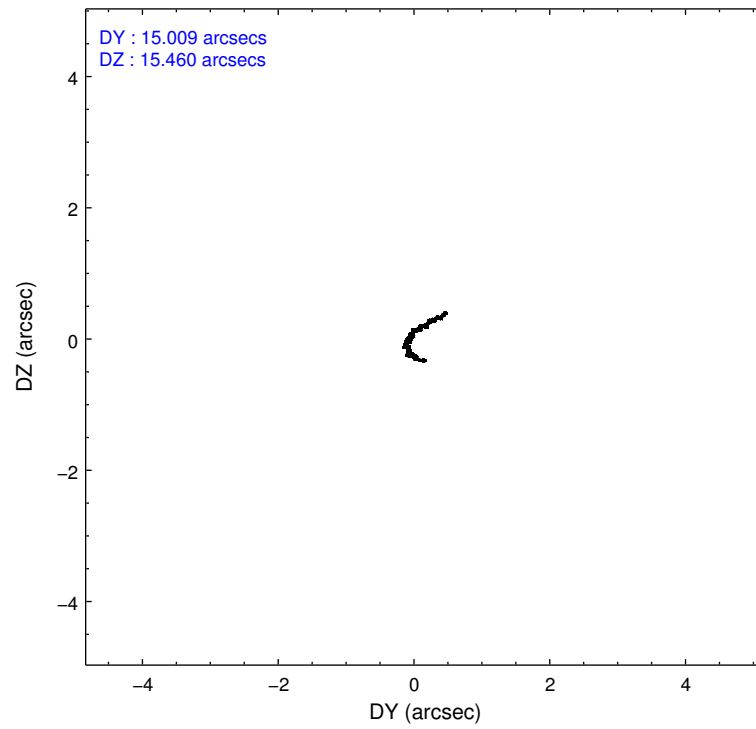
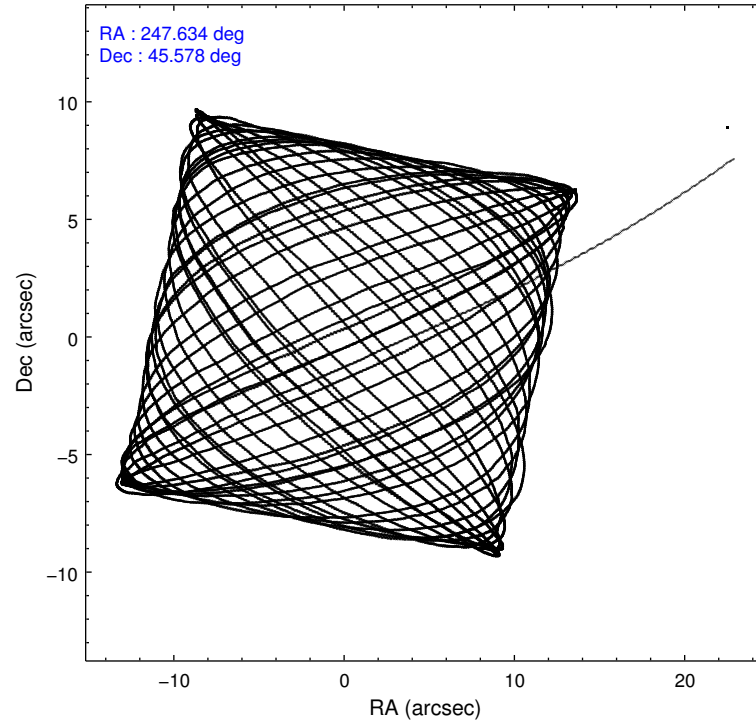
2.1.4 Events

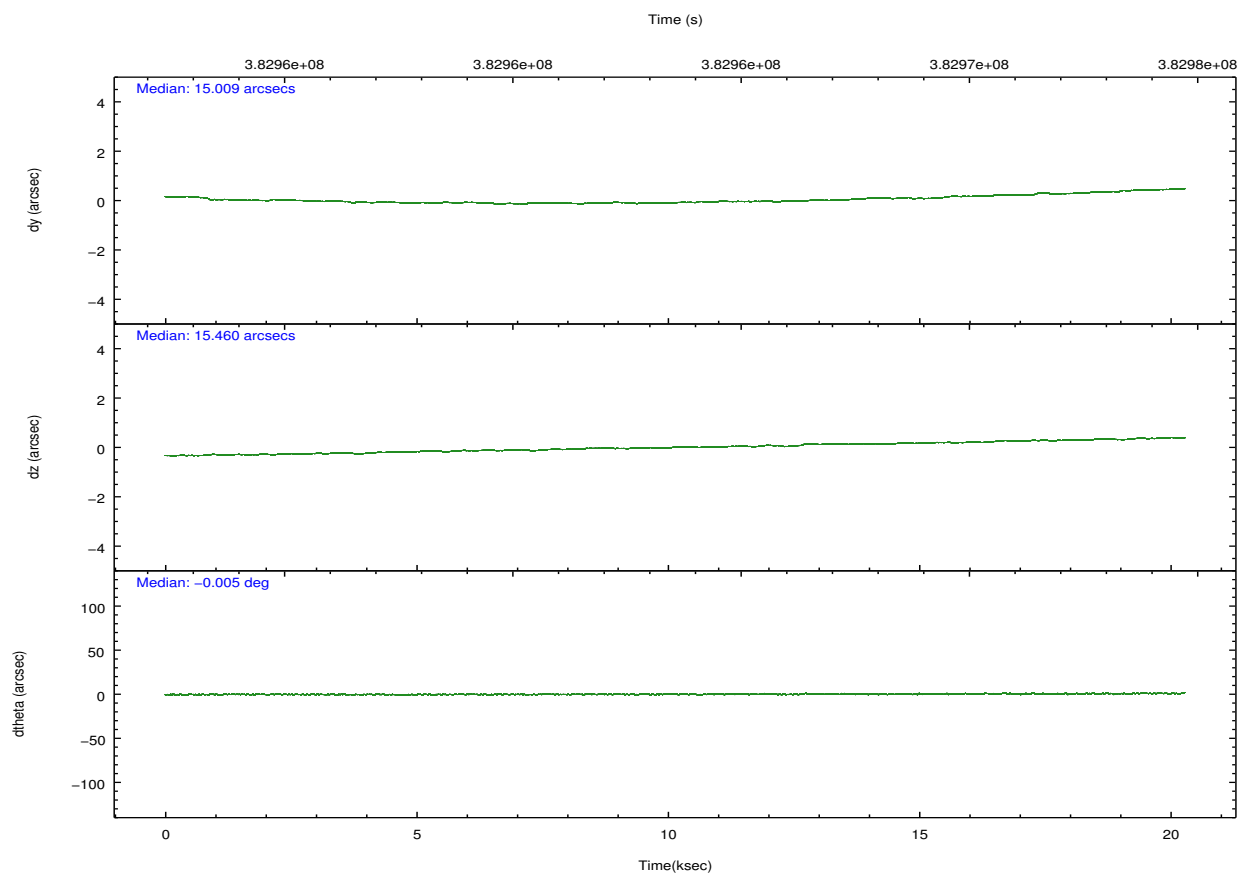
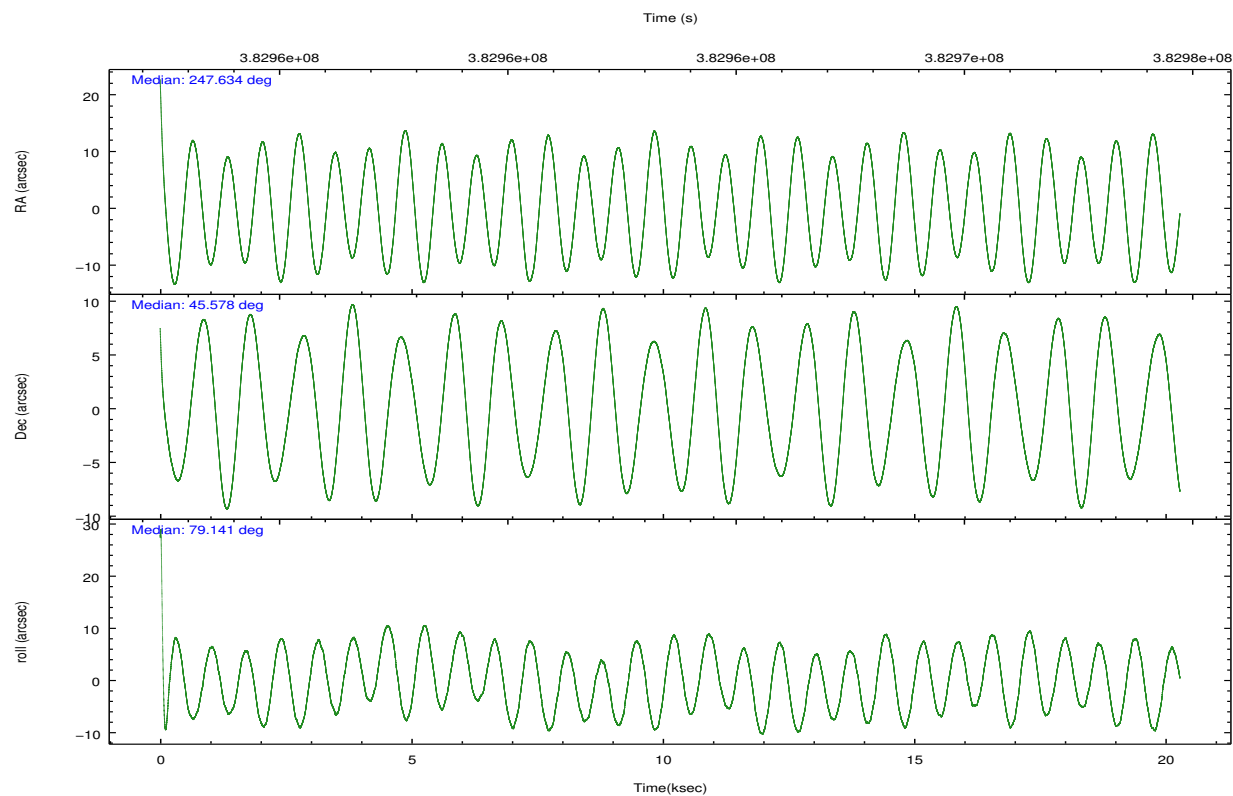
	ccd 2	ccd 3	ccd 5	ccd 6	ccd 7	ccd 8		ccd 2	ccd 3	ccd 5	ccd 6	ccd 7	ccd 8
level 1 events	167526	149496	223872	155773	183562	204178	grade 0 events	6214	5301	7074	6114	7749	15541
rejected events	150609	134393	115183	138391	100014	152490		3%	3%	3%	3%	4%	7%
rejected %	89%	89%	51%	88%	54%	74%	grade 1 events	102	104	445	82	197	167
								0%	0%	0%	0%	0%	0%
							grade 2 events	4047	3382	33739	3793	17037	12052
								2%	2%	15%	2%	9%	5%
							grade 3 events	1726	1695	4277	1842	7409	5315
								1%	1%	1%	1%	4%	2%
							grade 4 events	1708	1685	4152	1805	7447	4907
								1%	1%	1%	1%	4%	2%
							grade 5 events	5926	6416	17188	6537	19195	9656
								3%	4%	7%	4%	10%	4%
							grade 6 events	3223	3045	59480	3833	43931	13881
								1%	2%	26%	2%	23%	6%
							grade 7 events	144580	127868	97517	131767	80597	142659
								86%	85%	43%	84%	43%	69%

2.2 Compared Parameters

Parameter	Planned	Actual	Parameter	Planned	Actual
Instrument	ACIS	ACIS	Obspar format version number	7	7
Detector	ACIS-235678	ACIS-235678	Obspar file type	PREDICTED	ACTUAL
Grating	NONE	NONE	Obspar update status	NONE	UPDATED
Data mode	VFAINT	VFAINT	CCD I0 on	N	N
Observation mode	POINTING	POINTING	CCD I1 on	N	N
[deg] Pointing RA	247.647523	247.6341778306312	CCD I2 on	O1	Y
[deg] Pointing Dec	45.552712	45.57841680879392	CCD I3 on	O2	Y
[deg] Pointing Roll	78.992251	79.1584441737364	CCD S0 on	N	N
[mm] SIM focus pos	-0.684267	-0.6828225247311905	CCD S1 on	Y	Y
[mm] SIM defocus	0	0.001444936568705701	CCD S2 on	Y	Y
[mm] SIM translation stage pos	-190.132523	-190.1400660498719	CCD S3 on	Y	Y
[mm] SIM translation stage offset	0	0.00754346686406393	CCD S4 on	Y	Y
[s] Observation start time (MET)	382954683.184000	382952545.68995	CCD S5 on	N	N
Observation start date	2010-02-19T08:16:57	2010-02-19T07:42:25	Number of optional ACIS chips dropped	0	0
[s] Observation end time (MET)	382973683.184000	382974499.14107	On-chip summing requested	N	N
Observation end date	2010-02-19T13:33:37	2010-02-19T13:48:19	Subarray requested	NONE	NONE
Read mode	TIMED	TIMED	Alternating exposures requested	N	N
			[s] Primary exposure time	0.000000	3.2

2.3 Aspect



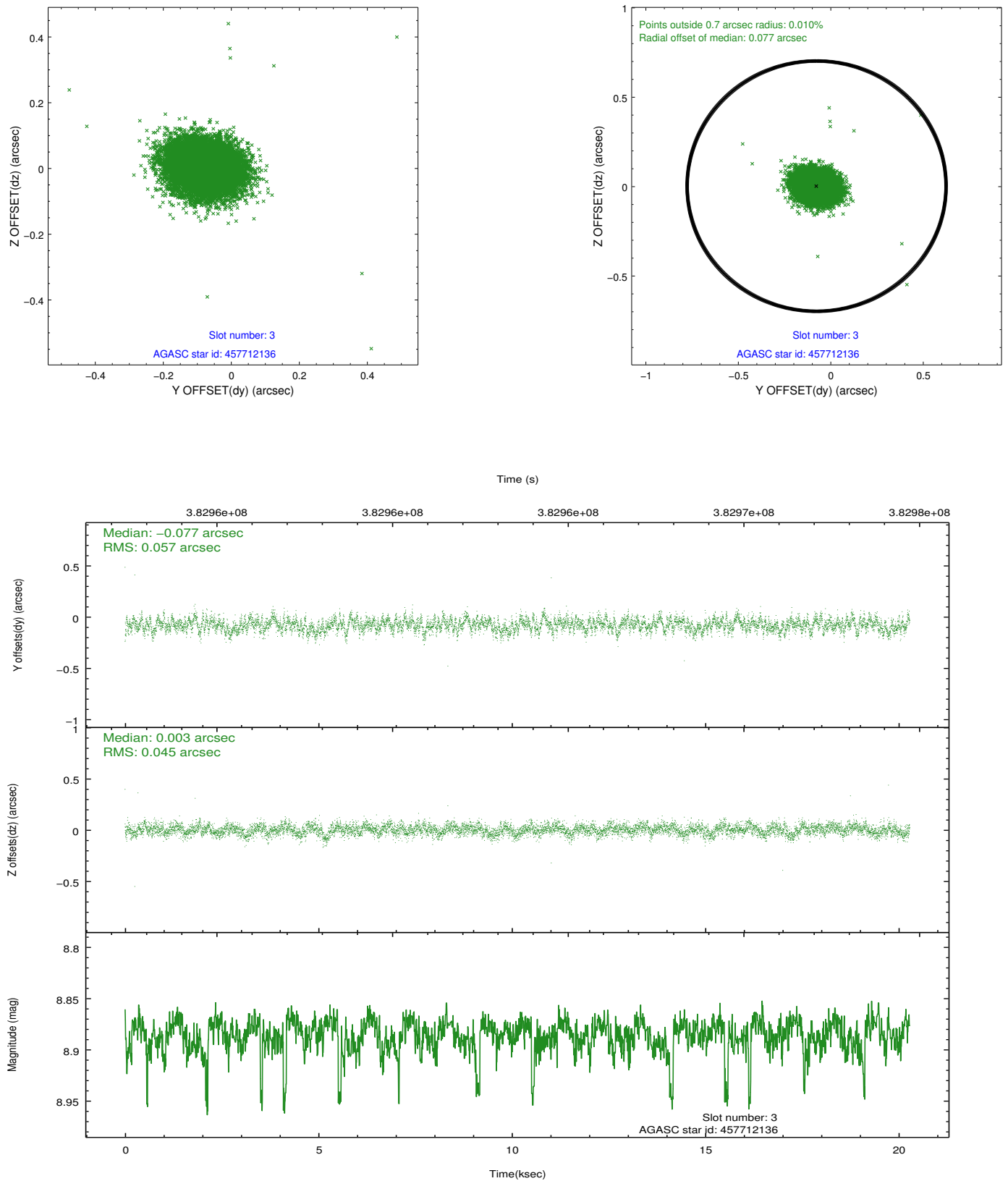


Slot Statistics

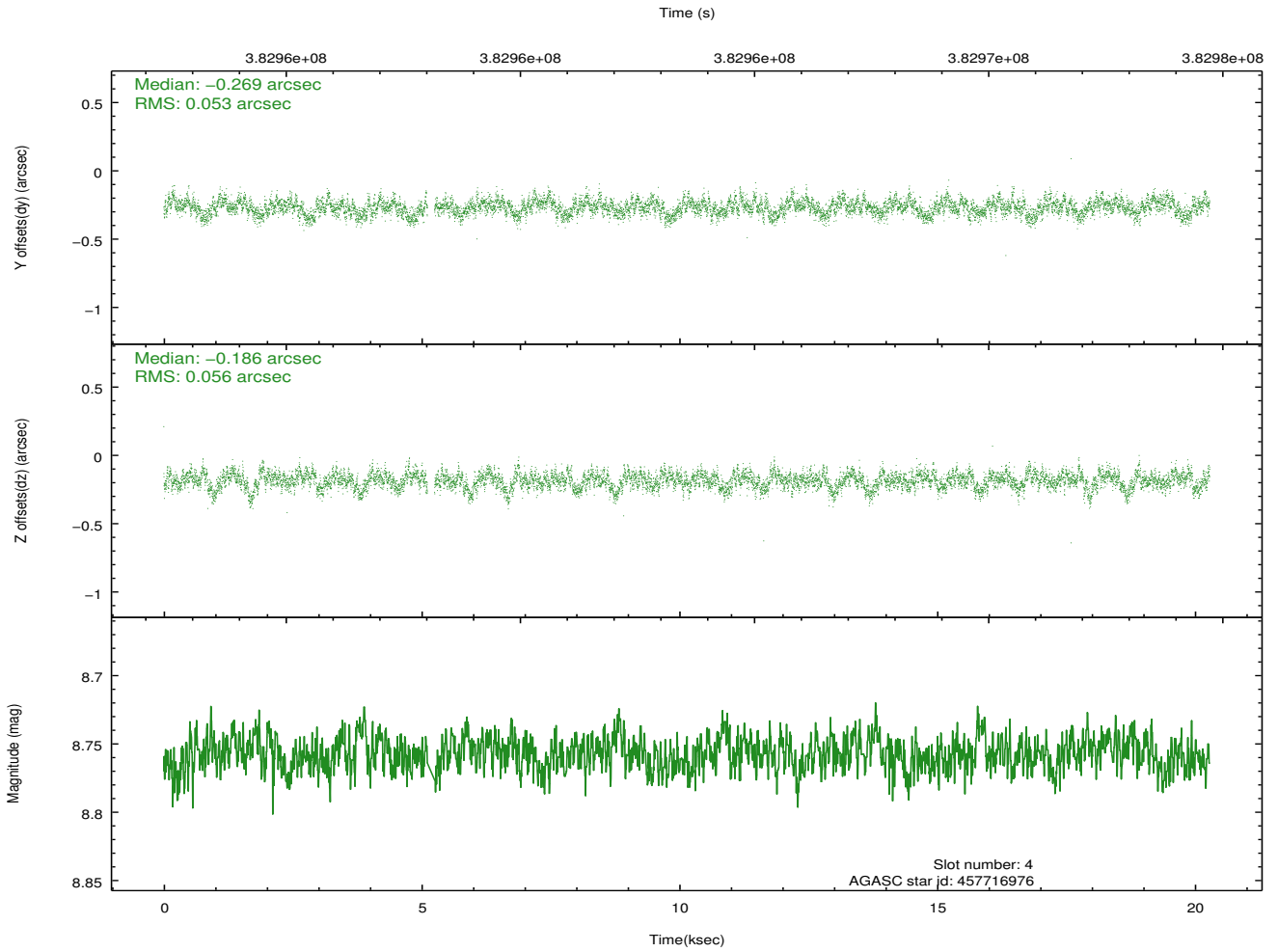
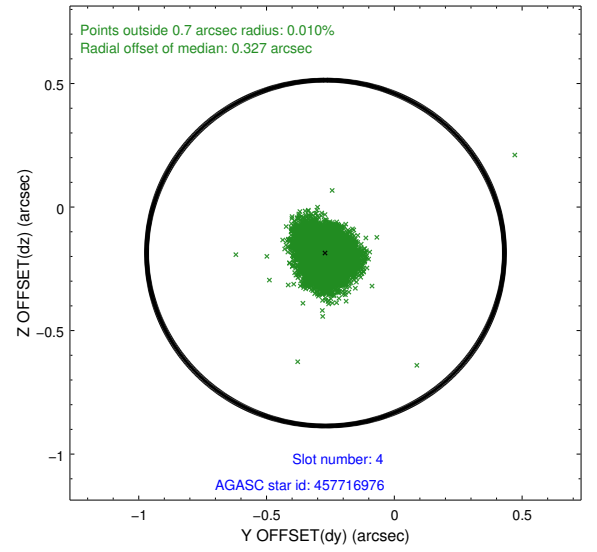
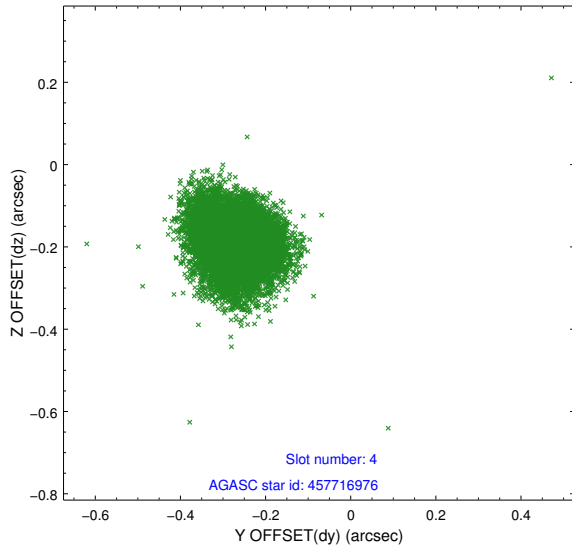
slot	status	id	mag	n_pts	med_dy	med_dz	dr1	dr2	ra	dec	mean_y	mean_z
0	FID	ACIS-S-2	6.93	4948	-0.097	-0.027	0.007	0.012	0.000000	0.000000	-768.11	-1736.89
1	FID	ACIS-S-4	7.02	4947	0.207	0.054	0.007	0.014	0.000000	0.000000	2145.37	171.51
2	FID	ACIS-S-5	7.05	4948	-0.140	-0.018	0.008	0.013	0.000000	0.000000	-1820.78	165.28
3	GUIDE	457712136	8.89	9872	-0.077	0.003	0.076	0.123	246.838271	45.189259	-1666.89	1767.79
4	GUIDE	457716976	8.76	9827	-0.269	-0.186	0.081	0.132	246.805338	45.392723	-961.52	1982.24
5	GUIDE	458626168	9.19	9888	-0.330	0.229	0.103	0.166	248.261023	45.127778	-1197.48	-1819.89
6	GUIDE	458627208	9.51	9826	0.762	-0.074	0.169	0.258	247.636895	45.604534	179.13	62.12
7	GUIDE	457715608	9.34	9883	-0.079	0.022	0.110	0.182	246.950816	45.277060	-1303.37	1544.44

2.4 Star Slots

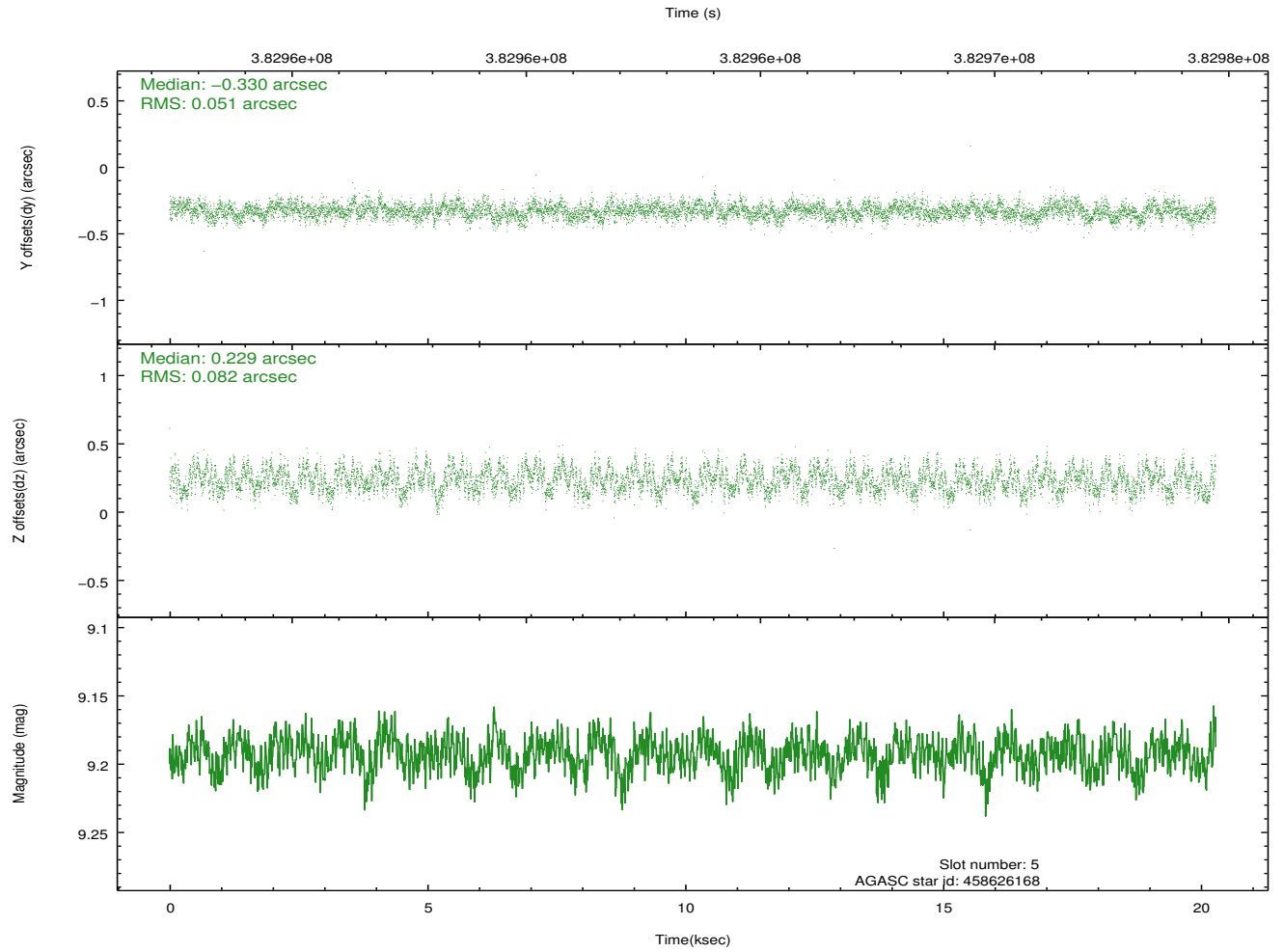
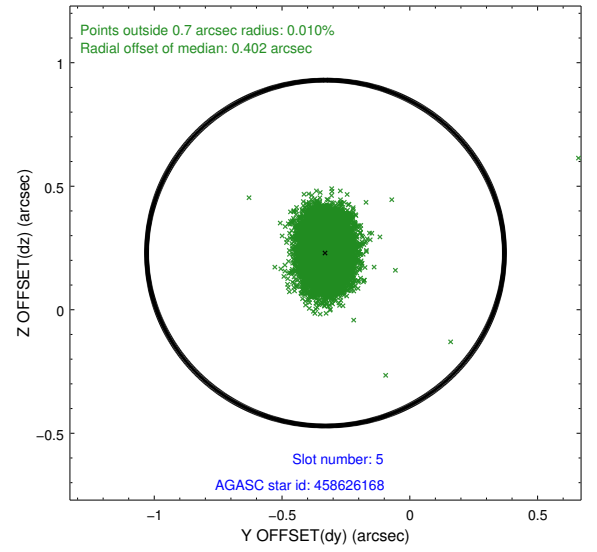
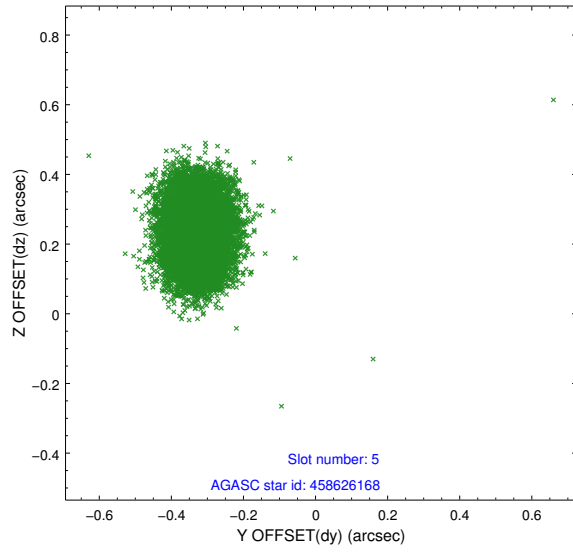
2.4.1 Slot 3



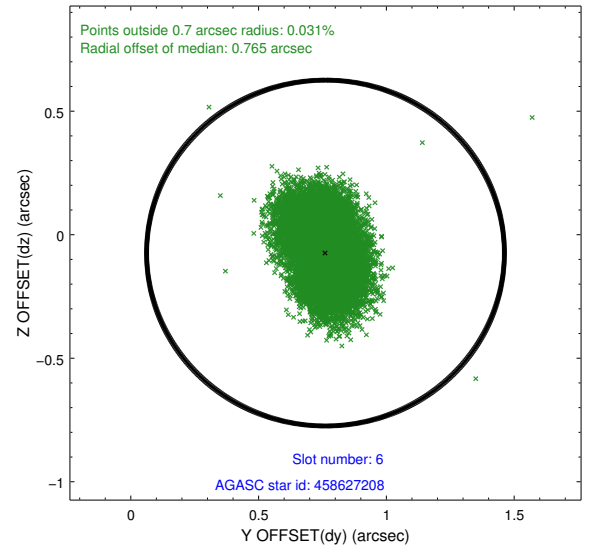
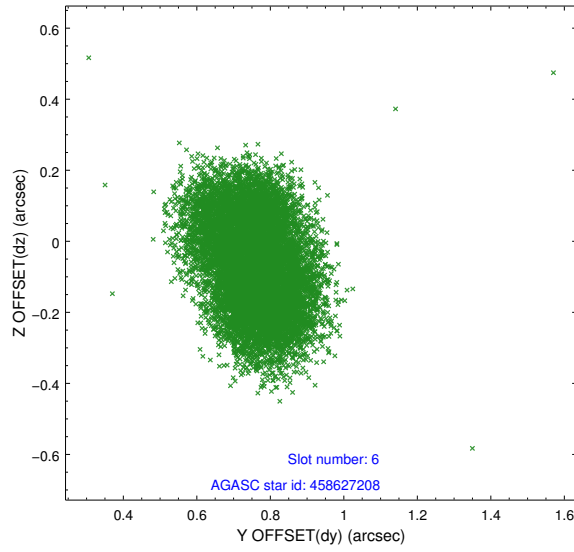
2.4.2 Slot 4



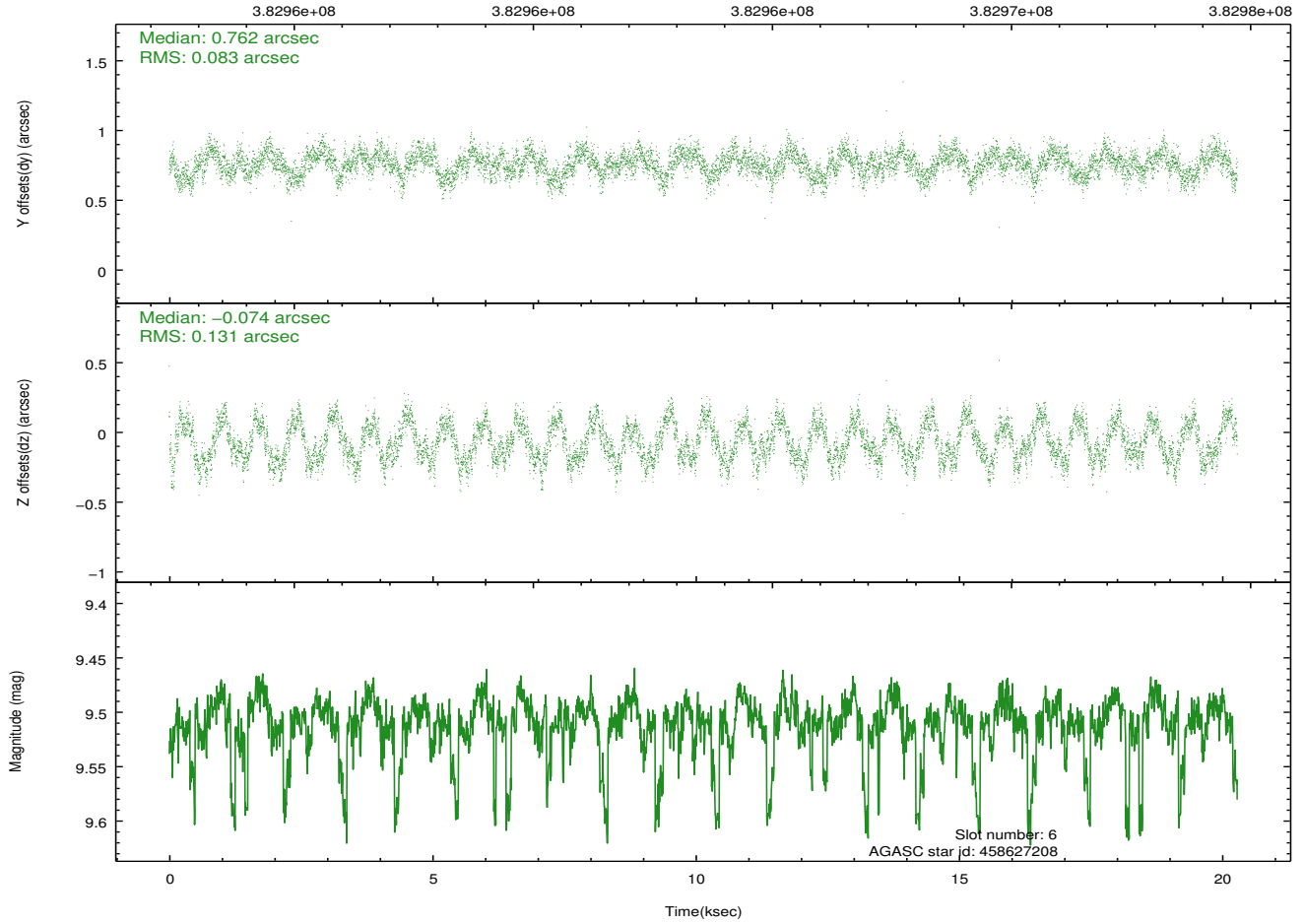
2.4.3 Slot 5



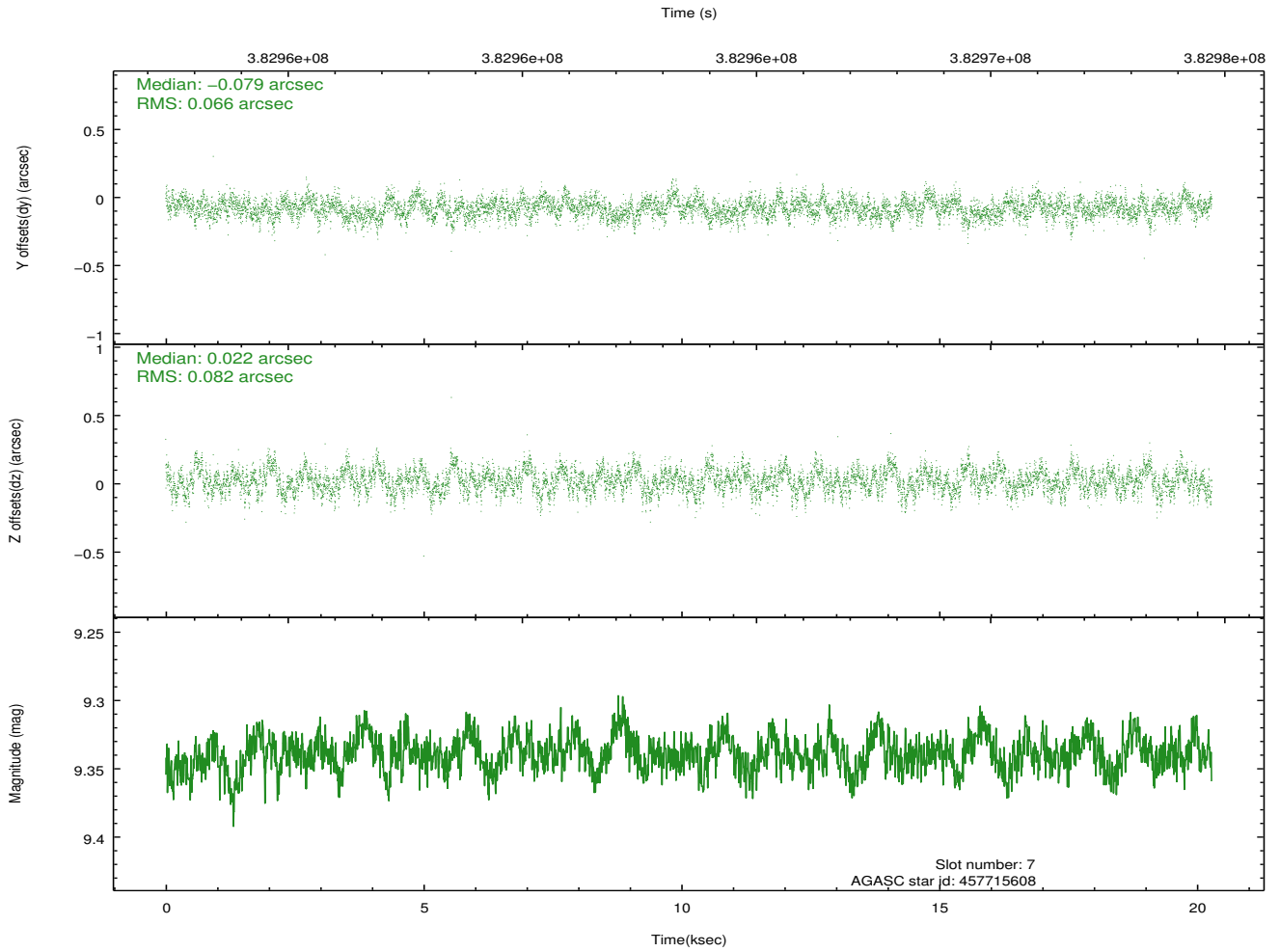
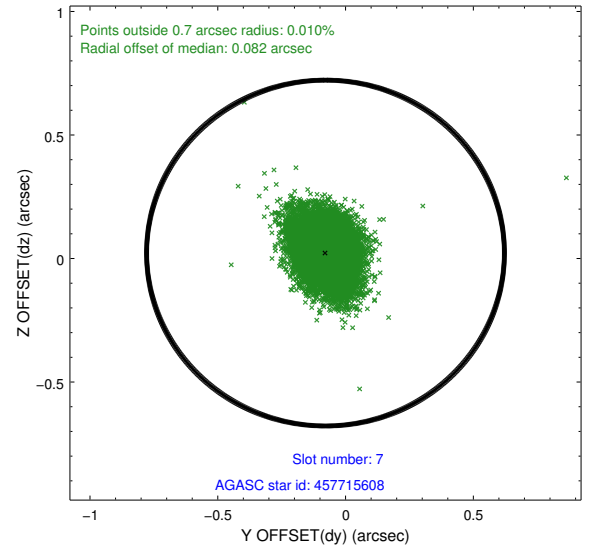
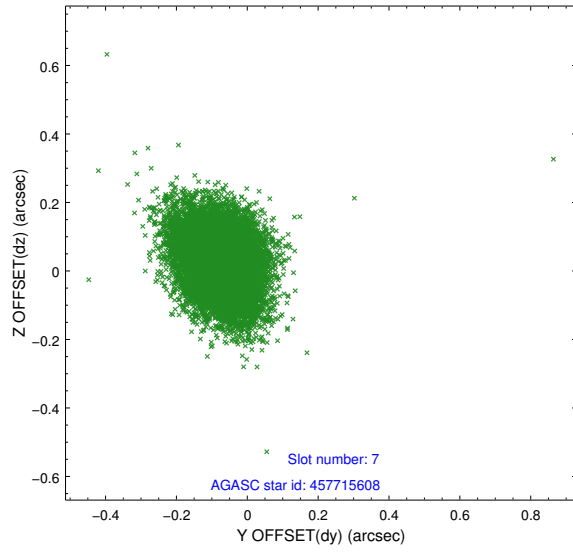
2.4.4 Slot 6



Time (s)

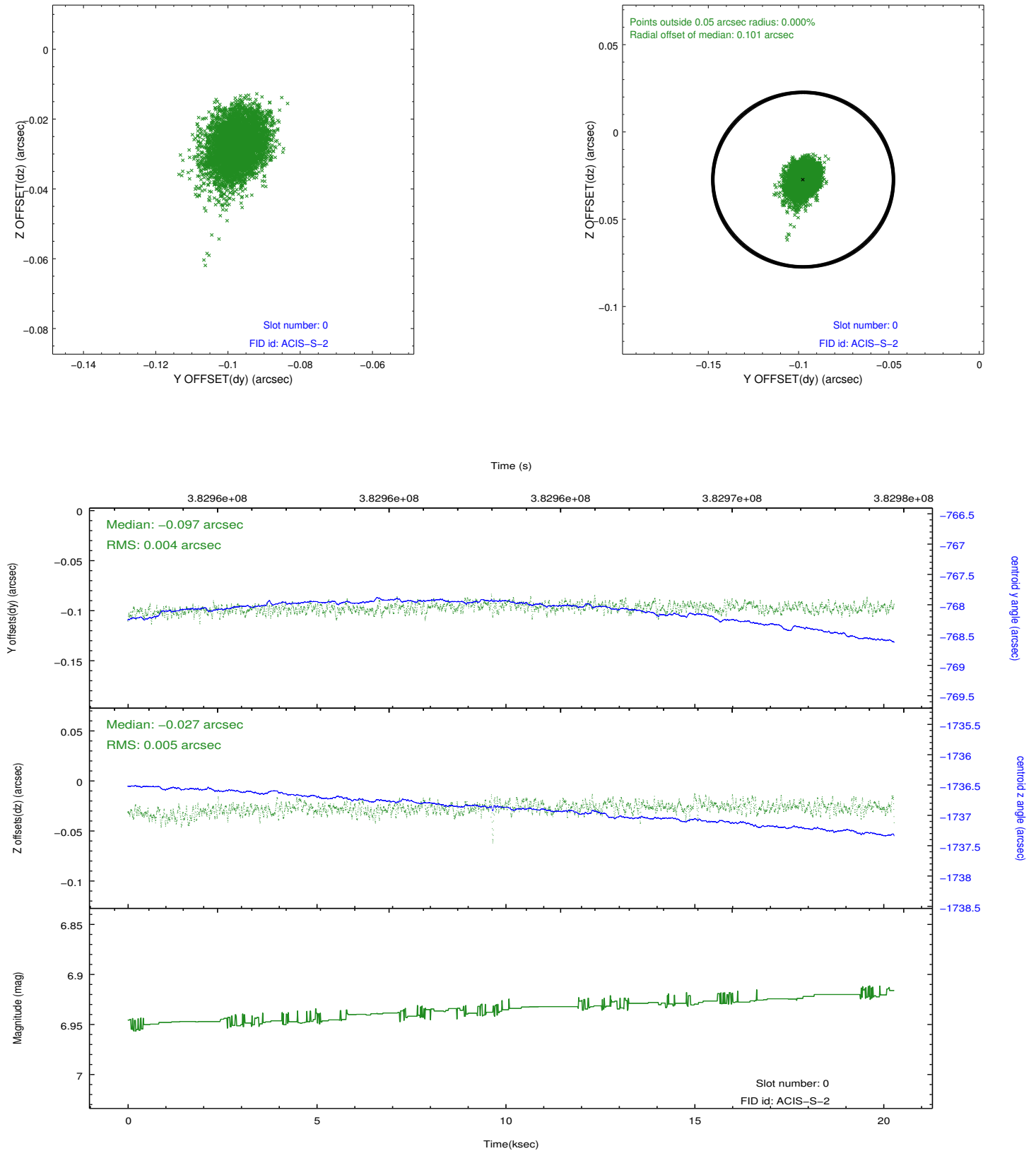


2.4.5 Slot 7

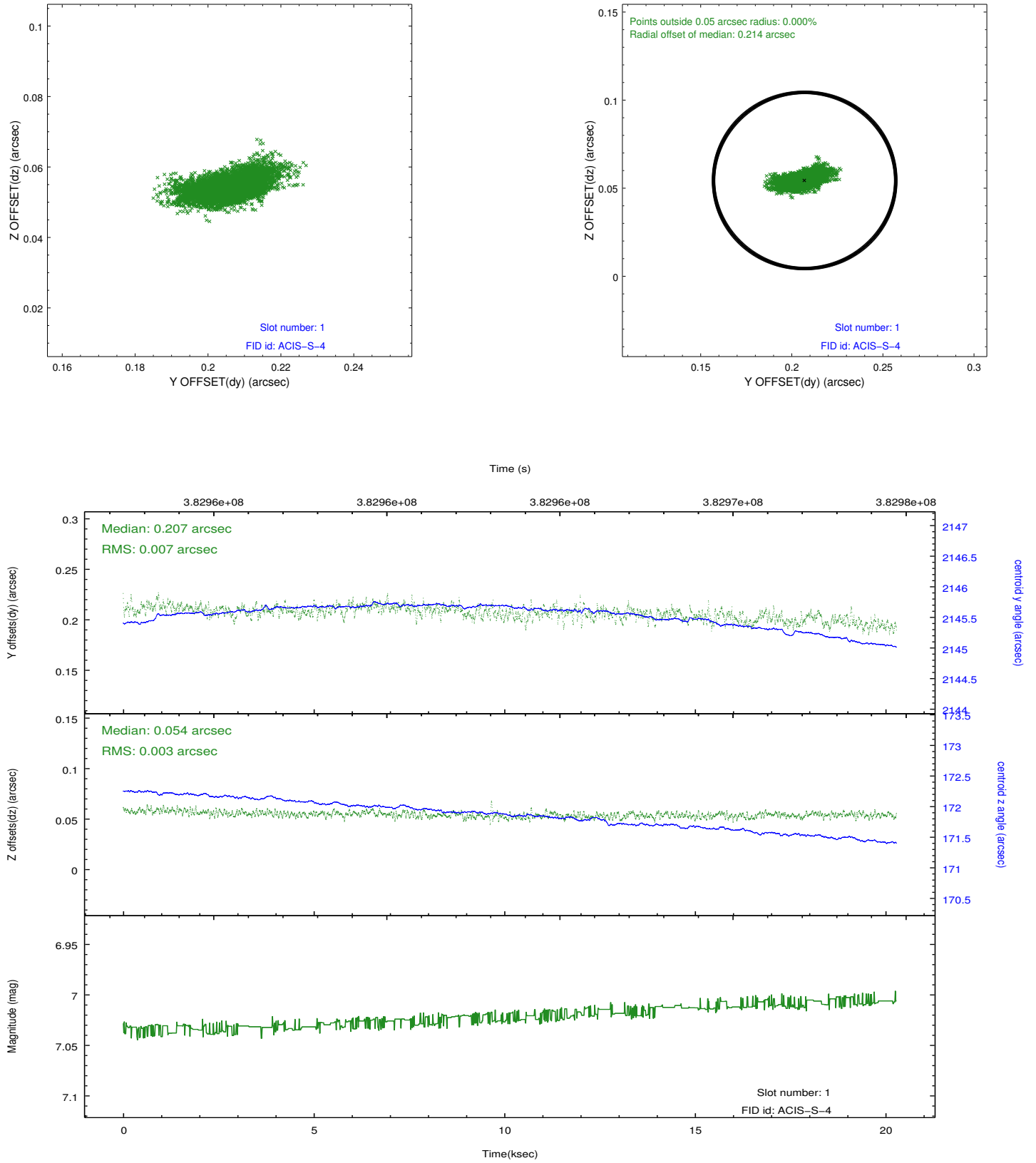


2.5 FID Slots

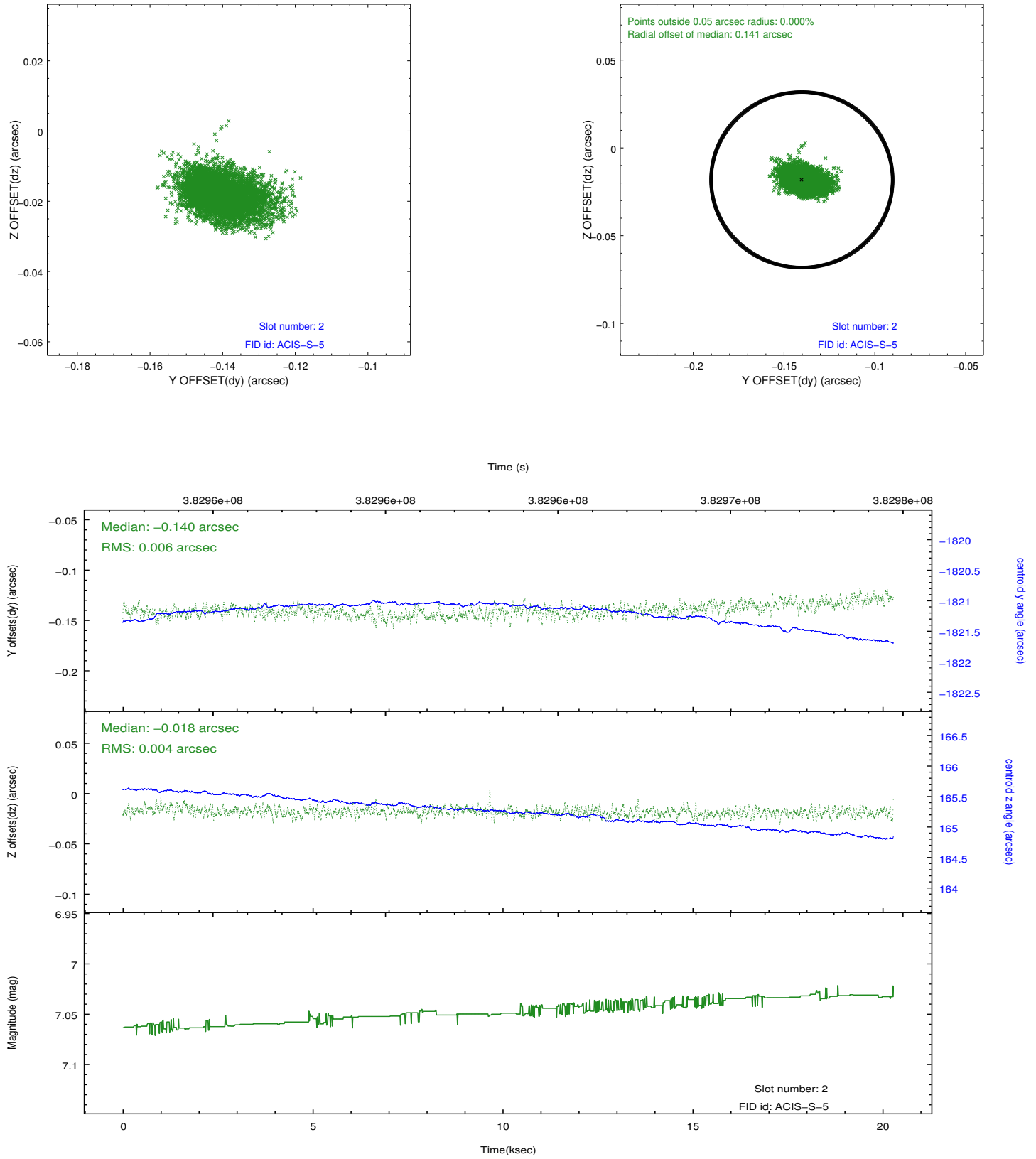
2.5.1 Slot 0



2.5.2 Slot 1



2.5.3 Slot 2



A Summary

A.1 Status

V&V Scientist	Beth Sundheim
V&V Date (YYYY-MM-DD)	2012.06.27
V&V Edition	1
V&V Disposition and Status	OK
V&V Charge Time	19.043199929118

A.2 Comments