

V&V Reference Report

L2 ASCDS Version : 8.4.5

Observation 12093 - L2 Version 2
Chandra X-Ray Center

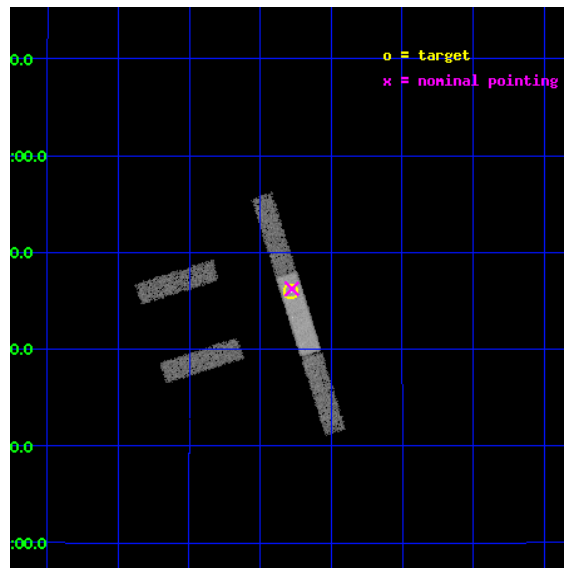
L2 Processing Date : Jun 20 2012

Contents

1	Front	2
2	OBI	3
2.1	OBI	3
2.1.1	Images	3
2.1.2	Bias	3
2.1.3	Parameters	4
2.1.4	Events	4
2.2	Compared Parameters	5
2.3	Aspect	6
2.4	Star Slots	9
2.4.1	Slot 3	9
2.4.2	Slot 4	10
2.4.3	Slot 5	11
2.4.4	Slot 6	12
2.4.5	Slot 7	13
2.5	FID Slots	14
2.5.1	Slot 0	14
2.5.2	Slot 1	15
2.5.3	Slot 2	16
A	Summary	17
A.1	Status	17
A.2	Comments	17

1 Front

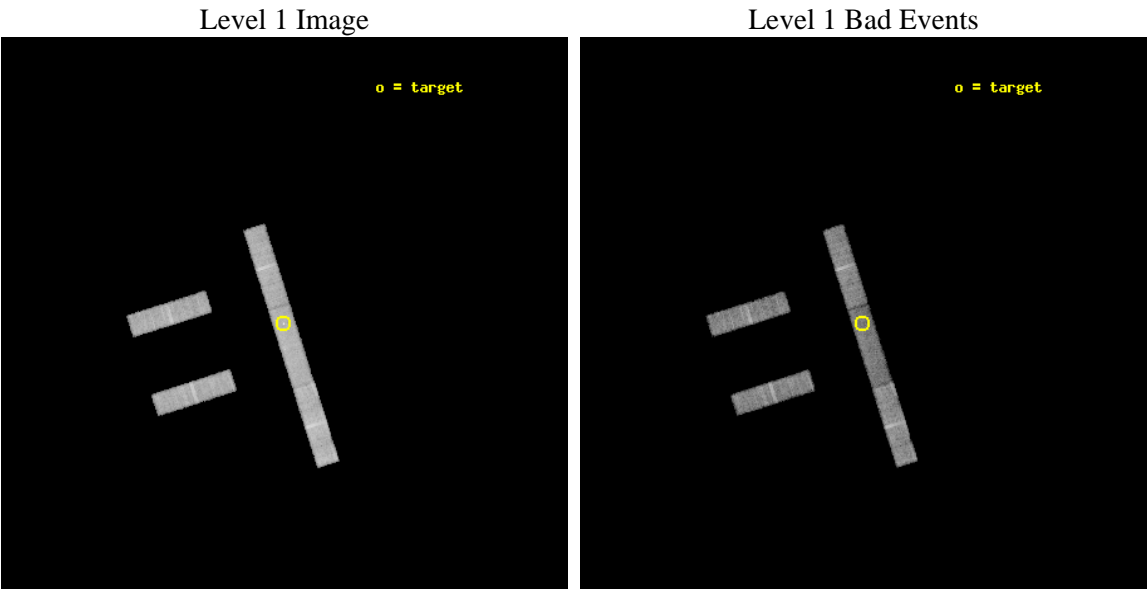
seq_num	702318	Sequence number
obs_id	12093	Observation id
title	Studying the Optical and X-ray Emission Regions of Quasar PG1115+080 by Monitoring Microlensing Events	Proposal title
observer	Professor Gordon Garmire	Principal investigator
object	PG 1115+080	Source name
dtcycle	0	
cycle	P	events from which exps? Prim/Second/Both
ra_targ	169.570417	Observer's specified target RA [deg]
dec_targ	7.766111	Observer's specified target Dec [deg]
ra_nom	169.56922700413	Nominal RA [deg]
dec_nom	7.7708041865283	Nominal Dec [deg]
roll_nom	72.401568939407	Nominal Roll [deg]
revision	2	Processing version of data
ontime	15181.0	Sum of GTIs [s]
livetime	14582.532851764	Livetime [s]
ontime2	15181.0	Sum of GTIs [s]
ontime3	15181.0	Sum of GTIs [s]
ontime6	15181.0	Sum of GTIs [s]
ontime7	15181.0	Sum of GTIs [s]
ontime8	15181.0	Sum of GTIs [s]
l2events	32433	Number of level 2 events



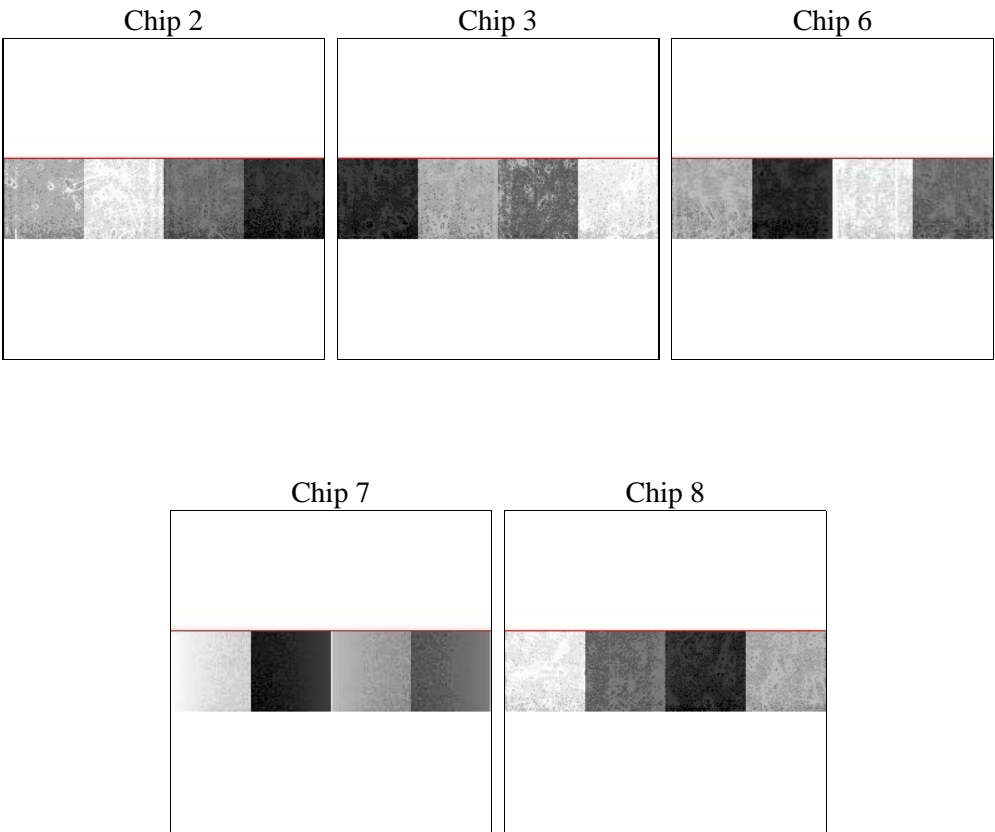
2 OBI

2.1 OBI

2.1.1 Images



2.1.2 Bias



2.1.3 Parameters

obi_num	0	Obi number	sched_exp_time	15000.000000	[s] Scheduled observation exposure time
ascdsver	8.4.5	Processing system revision	ontime	15181.0	Sum of GTIs [s]
caldsver	4.4.10	 	ontime2	15181.0	Sum of GTIs [s]
date	2012-06-21T01:07:10	Date and time of file creation	ontime3	15181.0	Sum of GTIs [s]
revision	2	Processing version of data	ontime6	15181.0	Sum of GTIs [s]
			ontime7	15181.0	Sum of GTIs [s]
			ontime8	15181.0	Sum of GTIs [s]
			l1events	220994	Number of level 1 events

2.1.4 Events

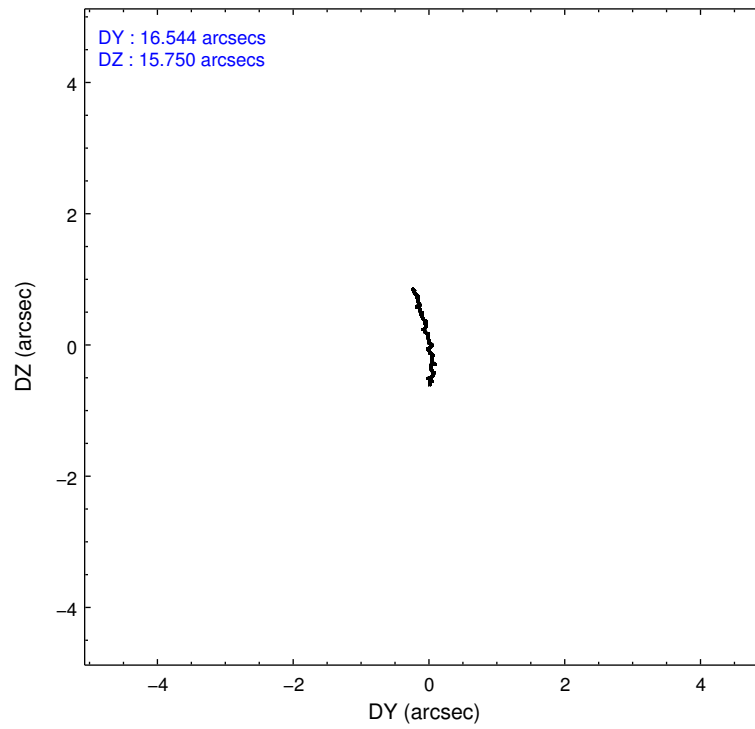
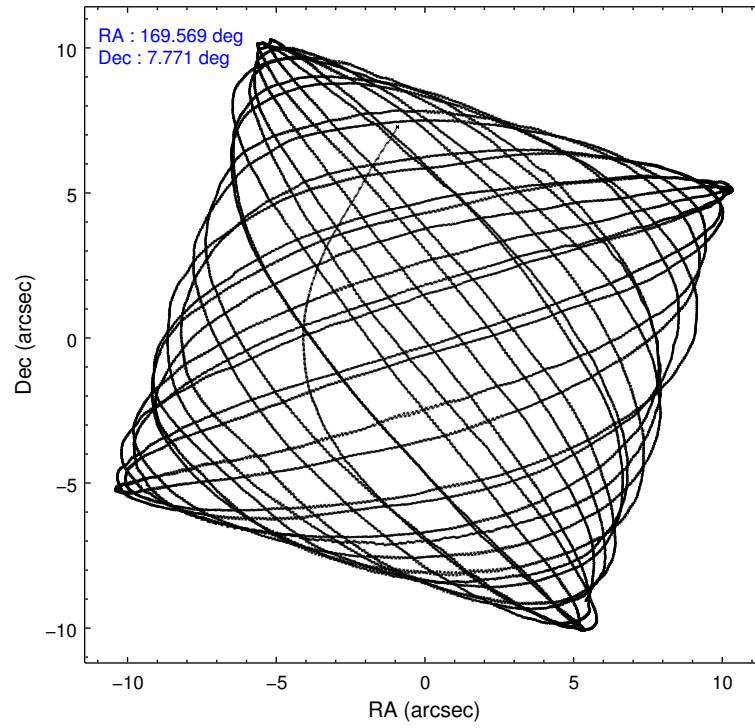
	ccd 2	ccd 3	ccd 6	ccd 7	ccd 8
level 1 events	38698	39762	41151	44946	56437
rejected events	34843	35964	36873	25087	44933
rejected %	90%	90%	89%	55%	79%

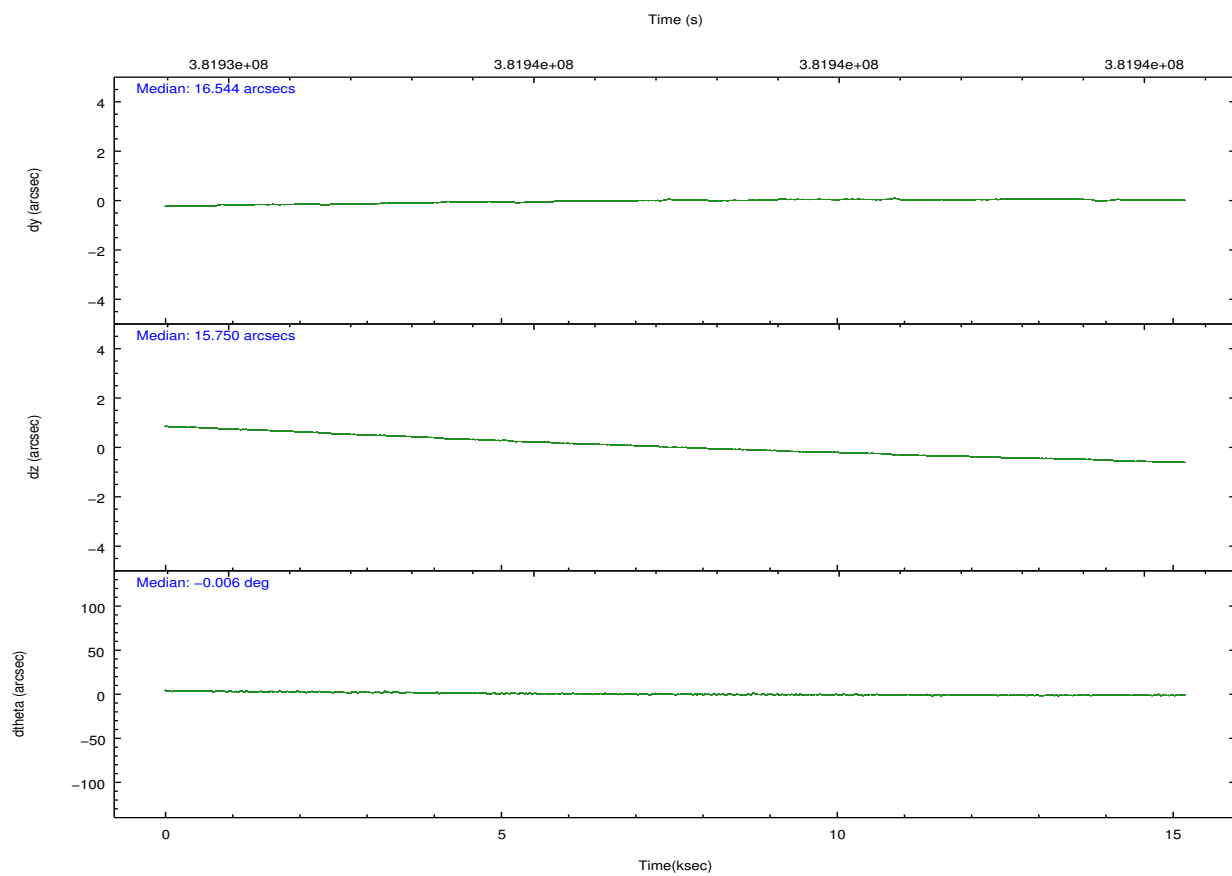
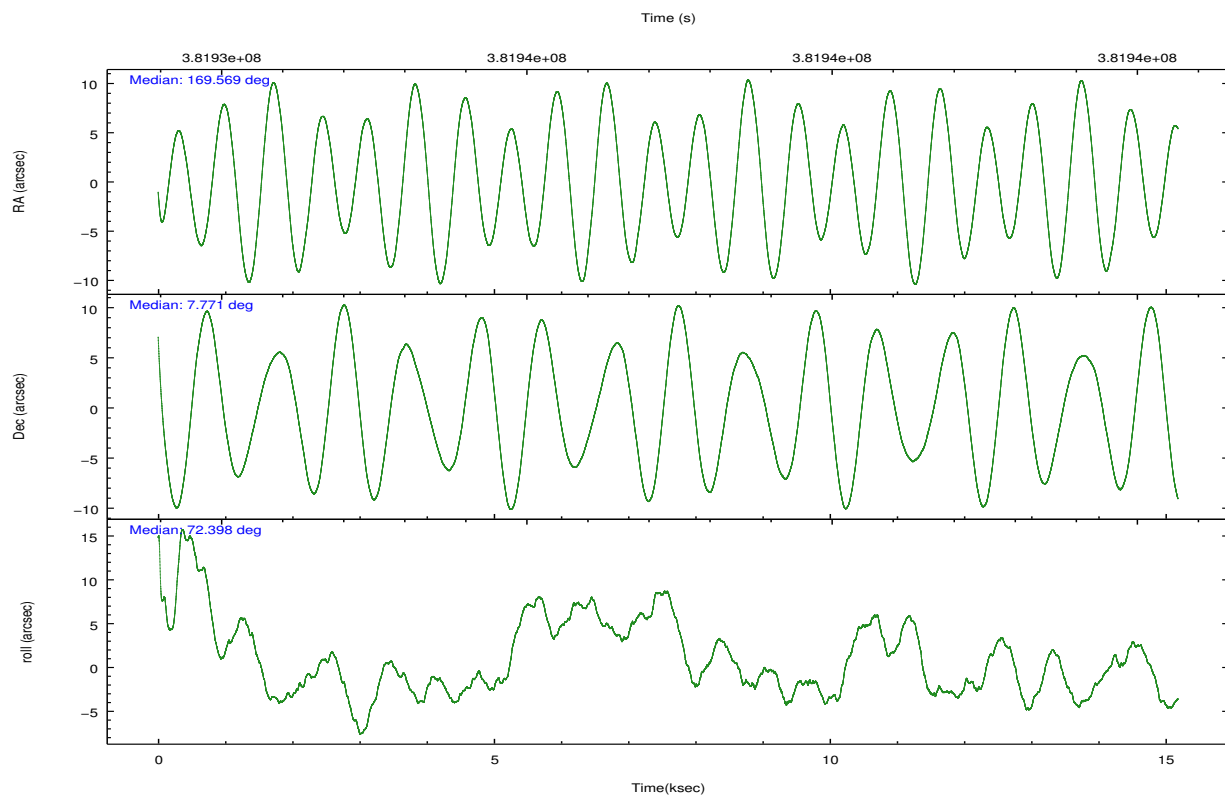
	ccd 2	ccd 3	ccd 6	ccd 7	ccd 8
grade 0 events	1236	1256	1367	2297	3267
	3%	3%	3%	5%	5%
grade 1 events	11	18	19	58	29
	0%	0%	0%	0%	0%
grade 2 events	886	788	951	4590	2845
	2%	1%	2%	10%	5%
grade 3 events	632	642	707	2314	1345
	1%	1%	1%	5%	2%
grade 4 events	680	622	696	2304	1298
	1%	1%	1%	5%	2%
grade 5 events	1204	1538	1563	4682	2232
	3%	3%	3%	10%	3%
grade 6 events	773	763	907	9929	3606
	1%	1%	2%	22%	6%
grade 7 events	33276	34135	34941	18772	41815
	85%	85%	84%	41%	74%

2.2 Compared Parameters

Parameter	Planned	Actual	Parameter	Planned	Actual
Instrument	ACIS	ACIS	Obspar format version number	7	7
Detector	ACIS-23678	ACIS-23678	Obspar file type	PREDICTED	ACTUAL
Grating	NONE	NONE	Obspar update status	NONE	UPDATED
Data mode	VFAINT	VFAINT	CCD I0 on	N	N
Observation mode	POINTING	POINTING	CCD I1 on	N	N
[deg] Pointing RA	169.575527	169.5692270041339	CCD I2 on	O1	Y
[deg] Pointing Dec	7.744194	7.77080418652832	CCD I3 on	O2	Y
[deg] Pointing Roll	72.244079	72.40156893940697	CCD S0 on	N	N
[mm] SIM focus pos	-0.684267	-0.6828225247311905	CCD S1 on	N	N
[mm] SIM defocus	0	0.001444936568705701	CCD S2 on	O4	Y
[mm] SIM translation stage pos	-190.132523	-190.1425803651734	CCD S3 on	Y	Y
[mm] SIM translation stage offset	0	0.01005778216563158	CCD S4 on	O3	Y
[s] Observation start time (MET)	381929904.184000	381928473.77555	CCD S5 on	N	N
Observation start date	2010-02-07T11:37:18	2010-02-07T11:14:33	Number of optional ACIS chips dropped	0	0
[s] Observation end time (MET)	381944904.184000	381945746.56392	On-chip summing requested	N	N
Observation end date	2010-02-07T15:47:18	2010-02-07T16:02:26	Subarray requested	CUSTOM	1/4
Read mode	TIMED	TIMED	Subarray start row	385	385
			Subarray row count	256	256
			Alternating exposures requested	N	N
			[s] Primary exposure time	0.000000	1

2.3 Aspect



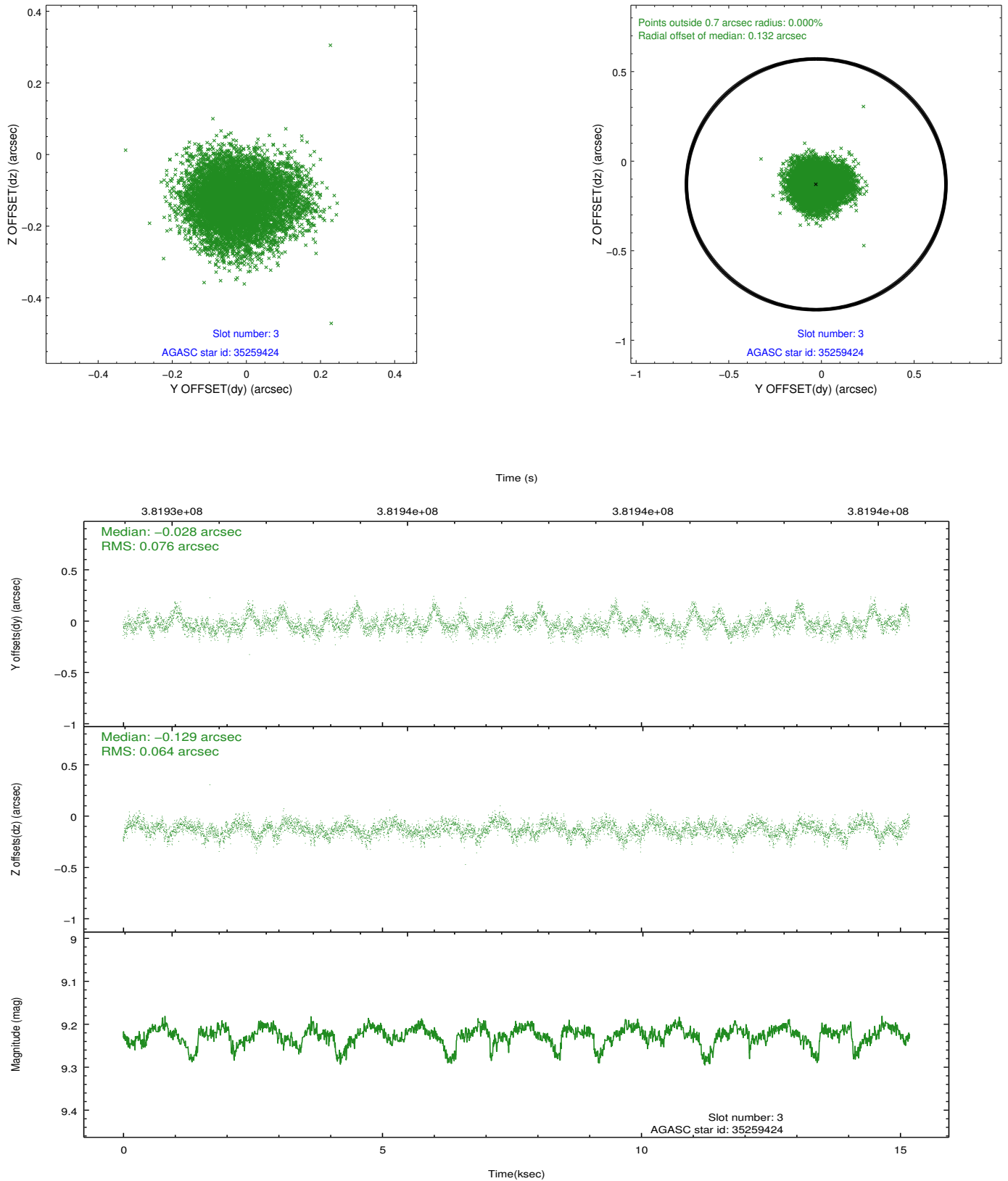


Slot Statistics

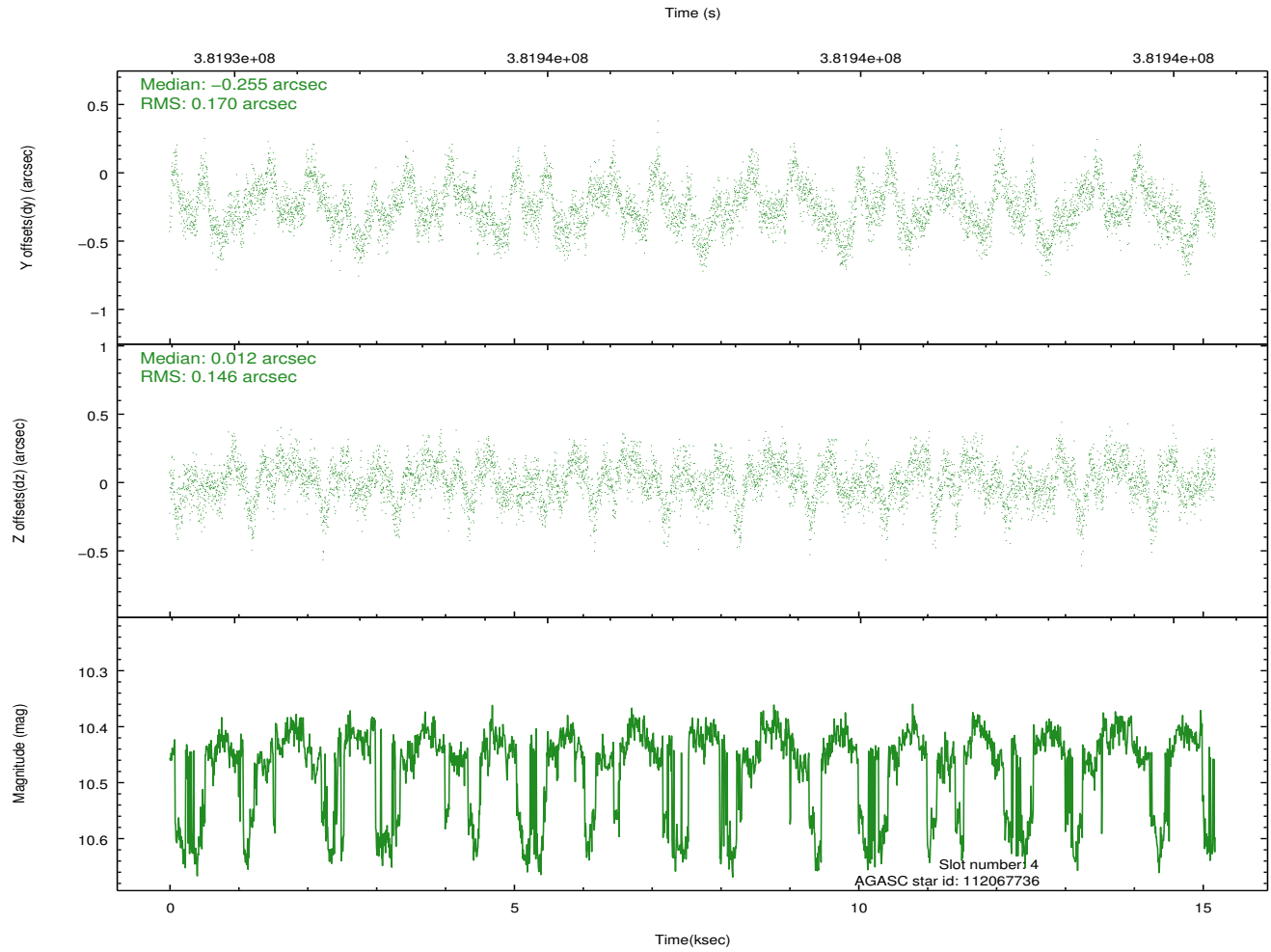
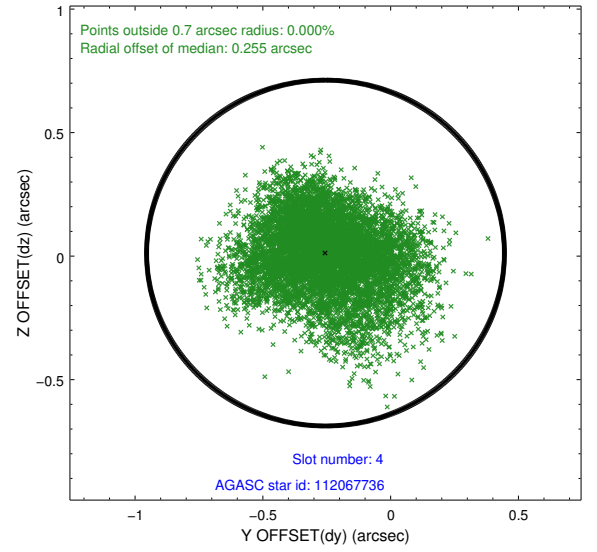
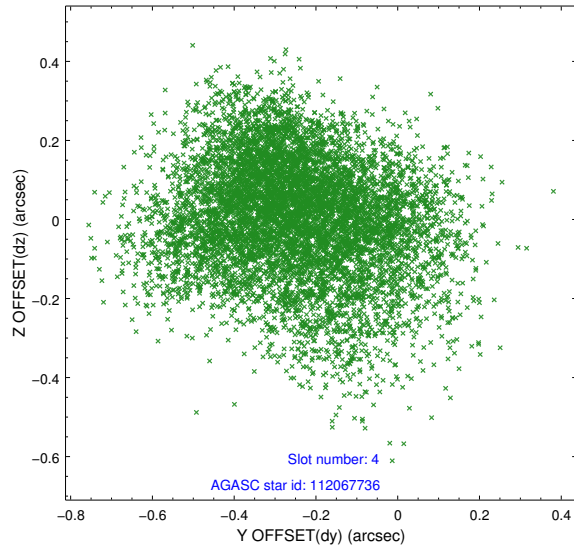
slot	status	id	mag	n_pts	med_dy	med_dz	dr1	dr2	ra	dec	mean_y	mean_z
0	FID	ACIS-S-1	6.97	3703	0.042	-0.067	0.021	0.032	0.000000	0.000000	926.56	-1732.84
1	FID	ACIS-S-4	6.99	3702	0.124	0.031	0.015	0.021	0.000000	0.000000	2144.19	171.11
2	FID	ACIS-S-5	7.02	3703	-0.192	0.049	0.011	0.015	0.000000	0.000000	-1822.18	165.03
3	GUIDE	35259424	9.22	7401	-0.028	-0.129	0.107	0.172	169.225147	7.406887	-1537.43	821.36
4	GUIDE	112067736	10.45	7347	-0.255	0.012	0.240	0.385	169.254540	7.940950	325.74	1306.48
5	GUIDE	112068312	9.86	7398	-0.024	-0.142	0.186	0.291	169.673636	8.146330	1485.41	108.95
6	GUIDE	112068528	8.78	7398	0.143	0.131	0.107	0.158	169.984852	7.578312	-122.08	-1572.61
7	GUIDE	35259552	10.31	7271	0.145	0.142	0.189	0.317	169.021323	7.237315	-2340.24	1329.15

2.4 Star Slots

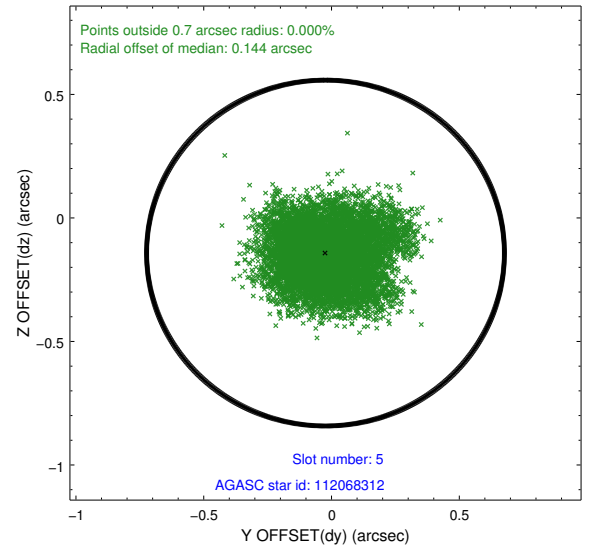
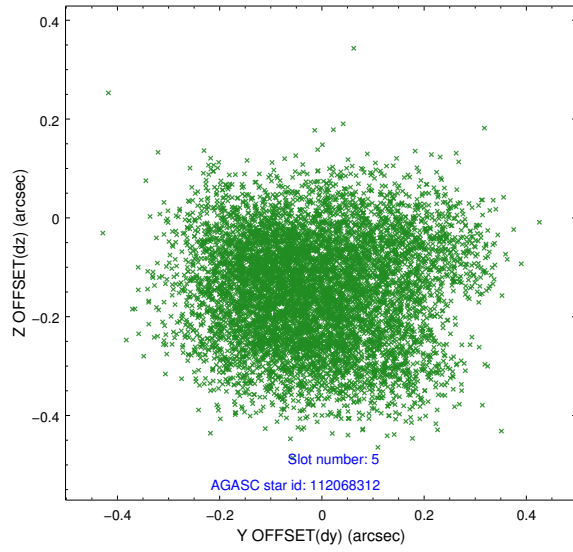
2.4.1 Slot 3



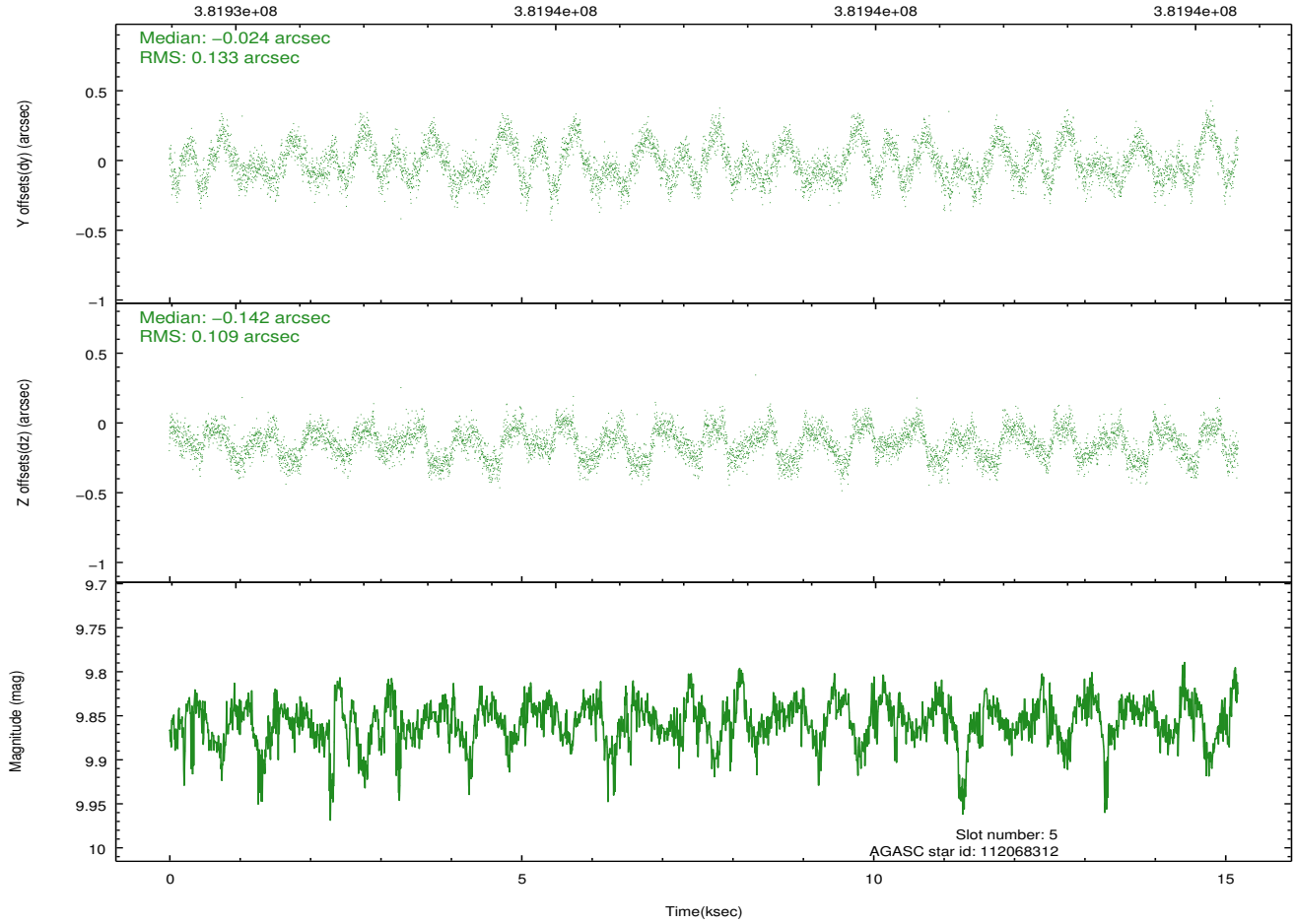
2.4.2 Slot 4



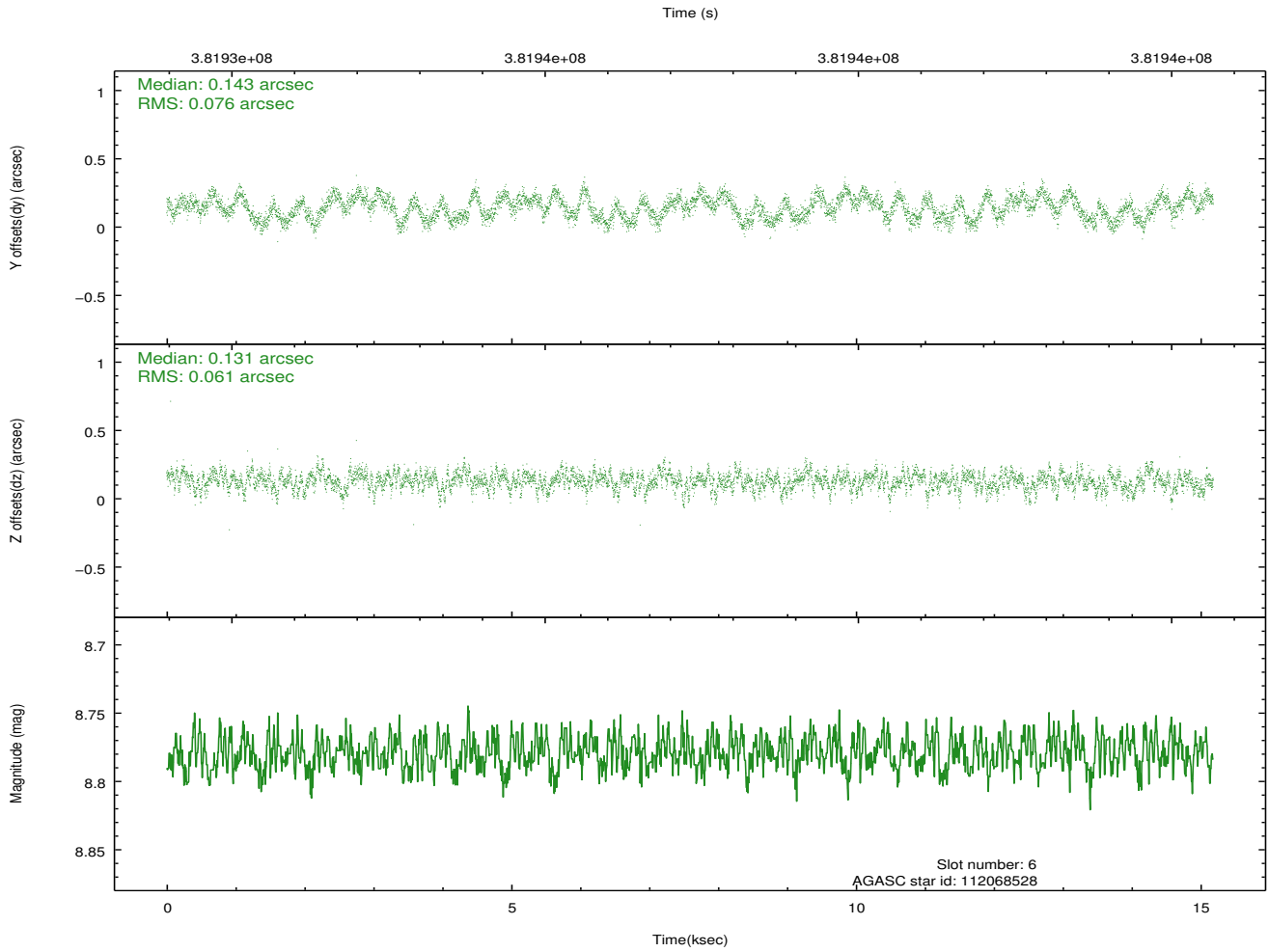
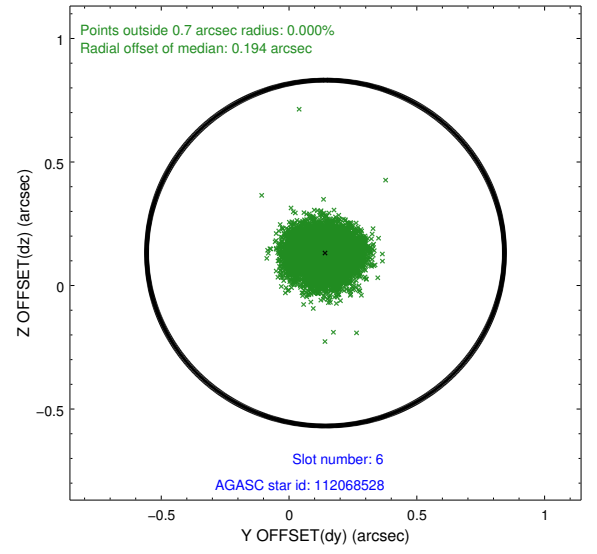
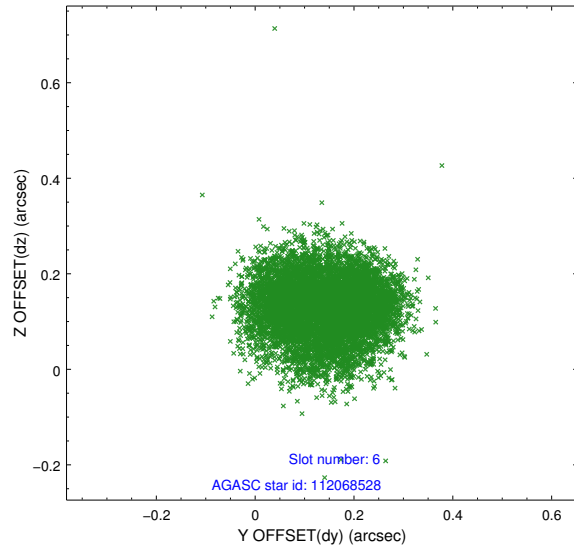
2.4.3 Slot 5



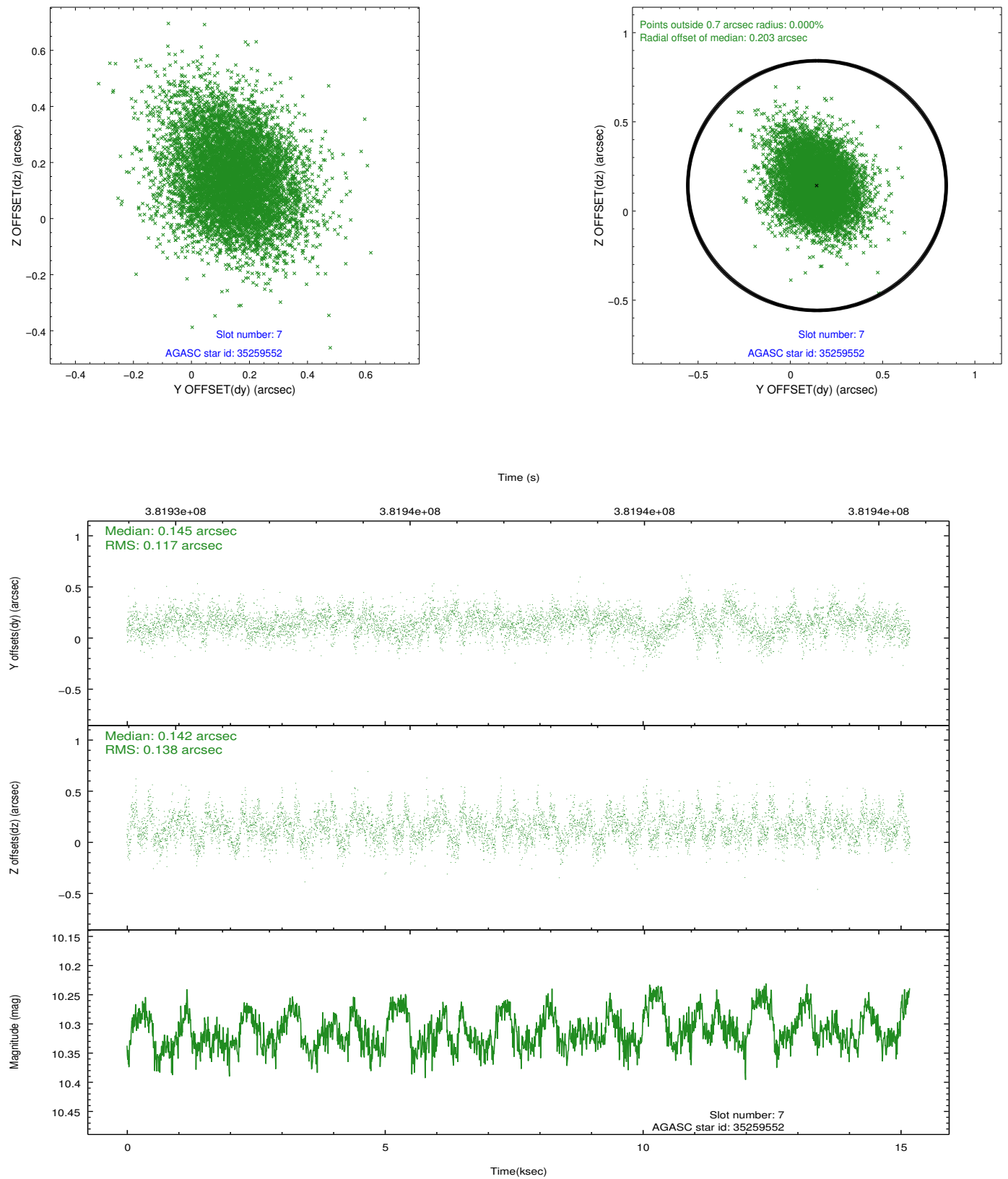
Time (s)



2.4.4 Slot 6

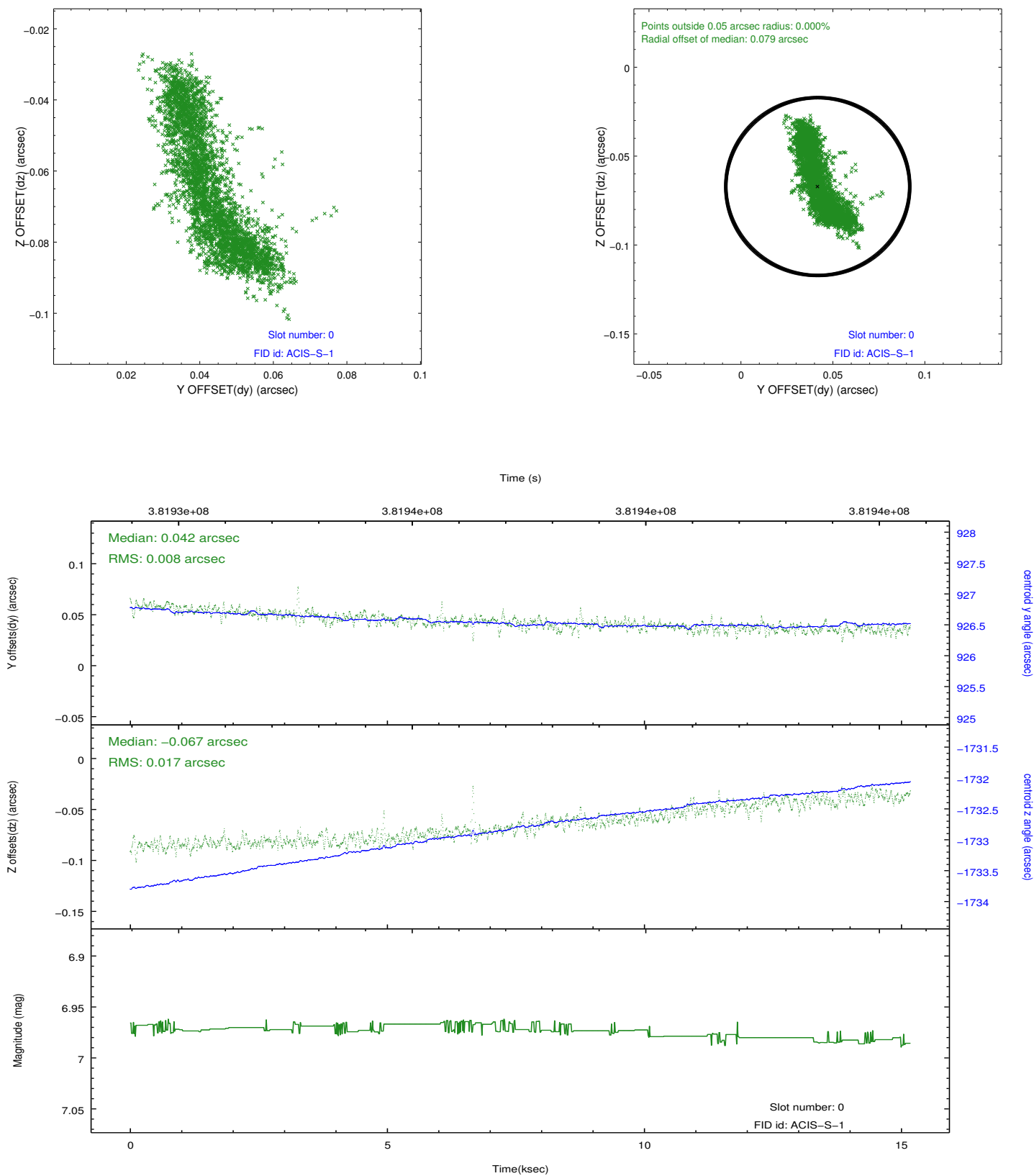


2.4.5 Slot 7

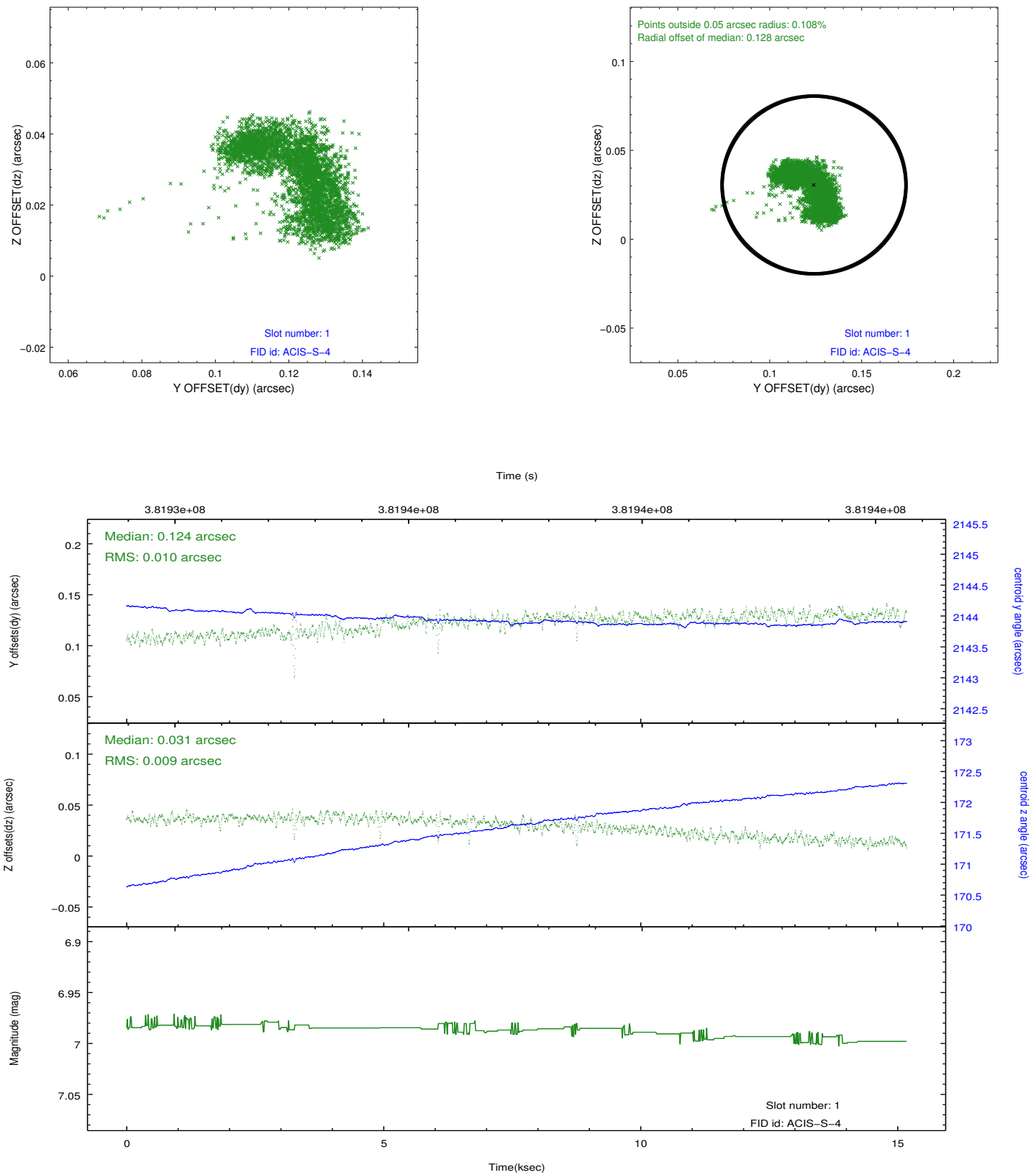


2.5 FID Slots

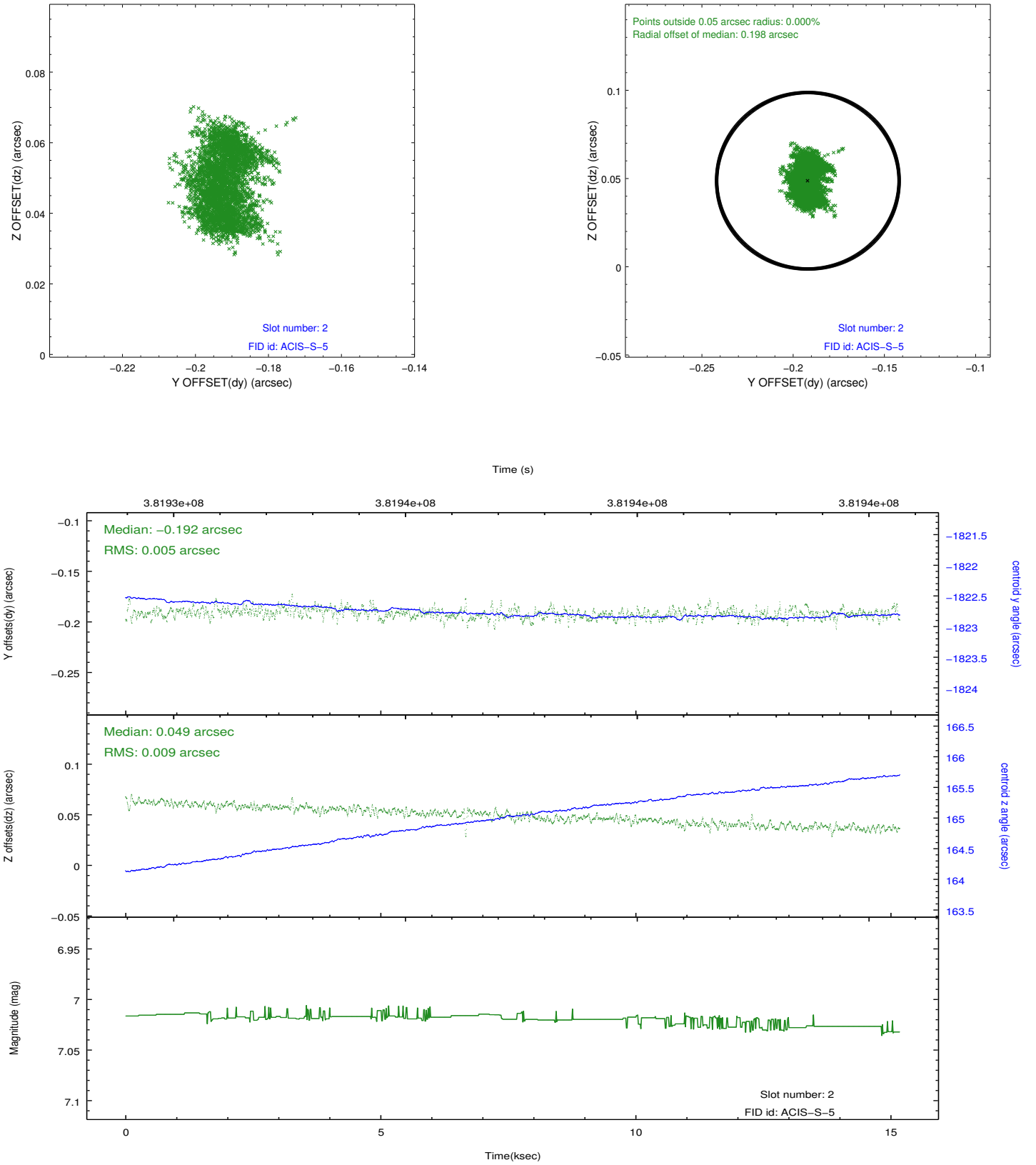
2.5.1 Slot 0



2.5.2 Slot 1



2.5.3 Slot 2



A Summary

A.1 Status

V&V Scientist	Jen Lauer
V&V Date (YYYY-MM-DD)	2012.06.27
V&V Edition	1
V&V Disposition and Status	OK
V&V Charge Time	15.181

A.2 Comments