

V&V Reference Report

L2 ASCDS Version : 8.4.5

Observation 11692 - L2 Version 2
Chandra X-Ray Center

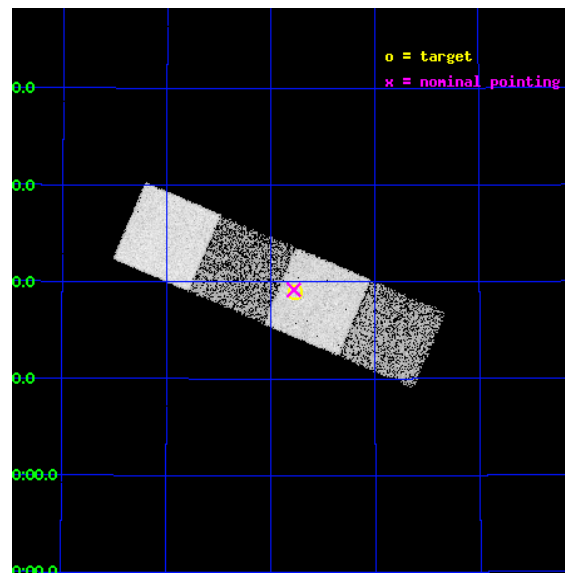
L2 Processing Date : Jul 4 2012

Contents

1	Front	2
2	OBI	3
2.1	OBI	3
2.1.1	Images	3
2.1.2	Bias	3
2.1.3	Parameters	4
2.1.4	Events	4
2.2	Compared Parameters	5
2.3	Aspect	6
2.4	Star Slots	9
2.4.1	Slot 3	9
2.4.2	Slot 4	10
2.4.3	Slot 5	11
2.4.4	Slot 6	12
2.4.5	Slot 7	13
2.5	FID Slots	14
2.5.1	Slot 0	14
2.5.2	Slot 1	15
2.5.3	Slot 2	16
A	Summary	17
A.1	Status	17
A.2	Comments	17

1 Front

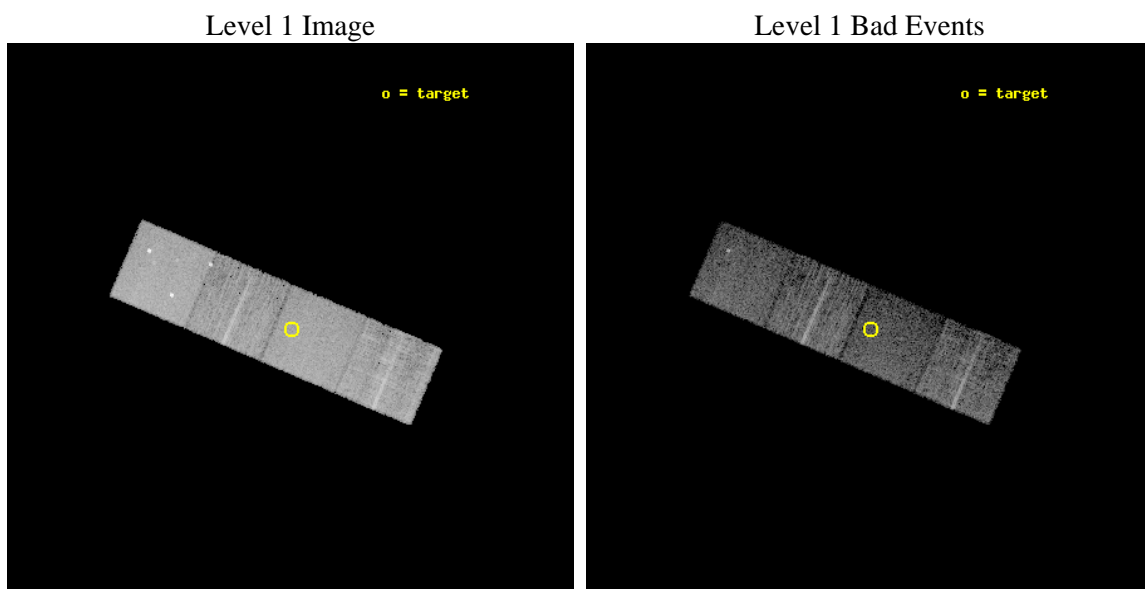
seq_num	702277	Sequence number
obs_id	11692	Observation id
title	Chandra survey of Polar Broad Absorption-Line Quasars	Proposal tit
observer	Dr. Kajal Ghosh	Principal investigator
object	SDSS J113445.83+431858.0	Source name
dtcycle	0	
cycle	P	events from which exps? Prim/Second/Both
ra_targ	173.690833	Observer's specified target RA [deg]
dec_targ	43.316111	Observer's specified target Dec [deg]
ra_nom	173.6946476254	Nominal RA [deg]
dec_nom	43.320014232503	Nominal Dec [deg]
roll_nom	23.10199226679	Nominal Roll [deg]
revision	2	Processing version of data
ontime	6048.1000465155	Sum of GTIs [s]
livetime	5969.0771668613	Livetime [s]
ontime5	6048.1000465155	Sum of GTIs [s]
ontime6	6048.1000465155	Sum of GTIs [s]
ontime7	6048.1000465155	Sum of GTIs [s]
ontime8	6048.1000465155	Sum of GTIs [s]
l2events	64932	Number of level 2 events



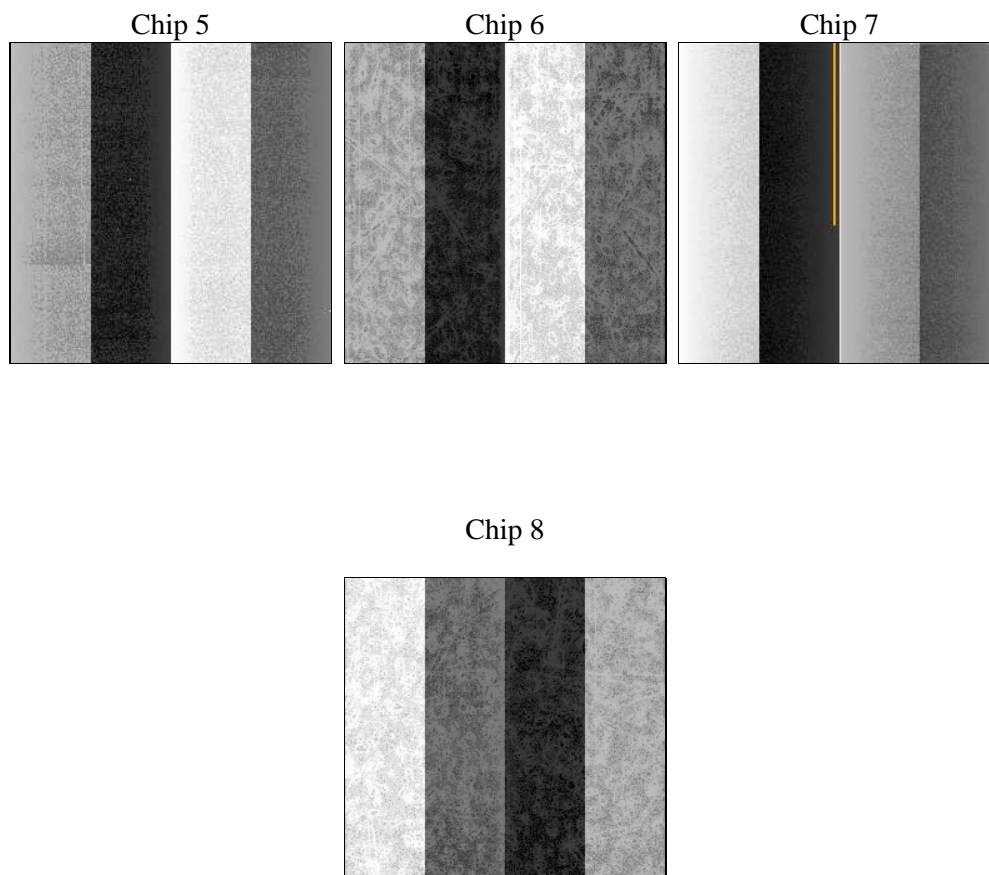
2 OBI

2.1 OBI

2.1.1 Images



2.1.2 Bias



2.1.3 Parameters

obi_num	0	Obi number	sched_exp_time	6000.000000	[s] Scheduled observation exposure time
ascdsver	8.4.5	Processing system revision	ontime	6048.1000465155	Sum of GTIs [s]
caldsver	4.5.0	 	ontime5	6048.1000465155	Sum of GTIs [s]
date	2012-07-04T15:20:09	Date and time of file creation	ontime6	6048.1000465155	Sum of GTIs [s]
revision	2	Processing version of data	ontime7	6048.1000465155	Sum of GTIs [s]
			ontime8	6048.1000465155	Sum of GTIs [s]
			l1events	228027	Number of level 1 events

2.1.4 Events

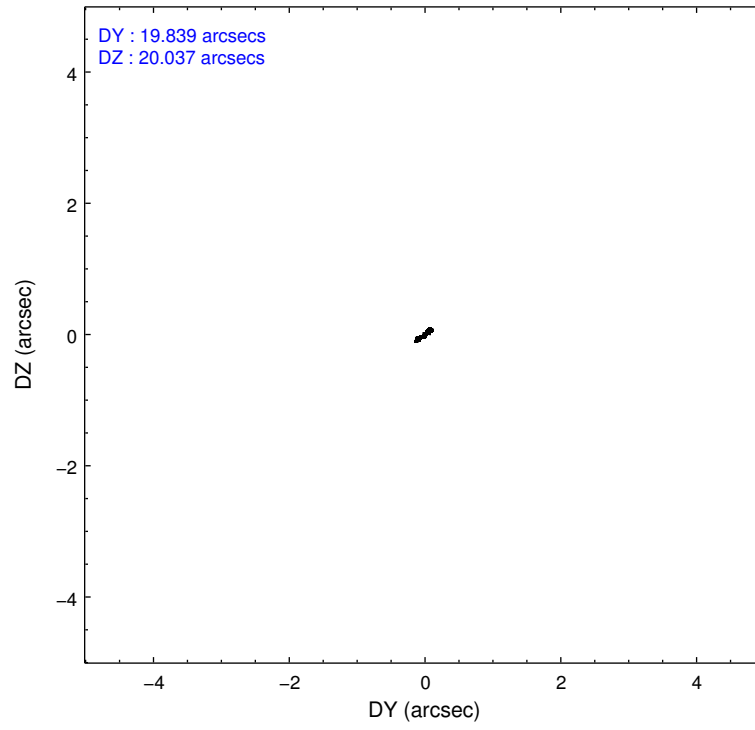
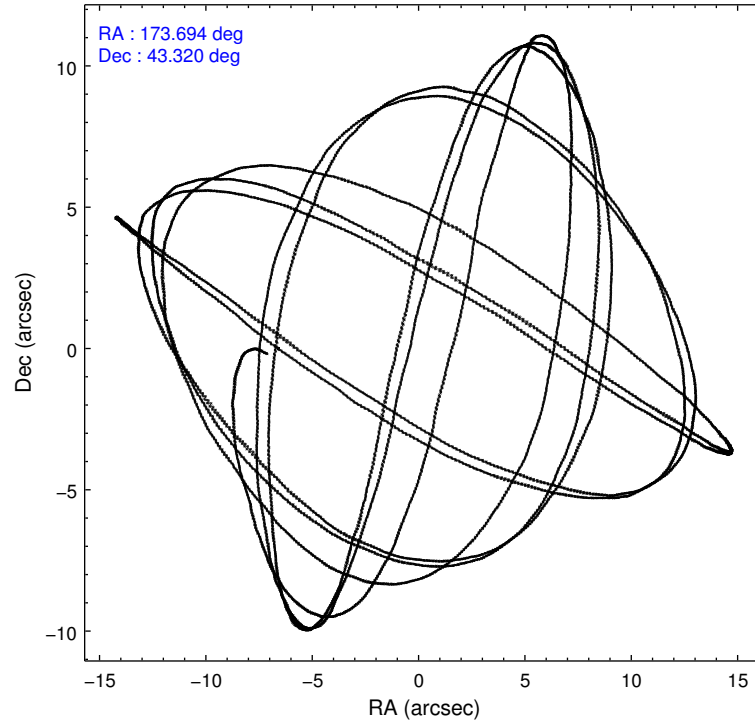
	ccd 5	ccd 6	ccd 7	ccd 8
level 1 events	70185	46079	54347	57416
rejected events	34604	41141	29539	42184
rejected %	49%	89%	54%	73%

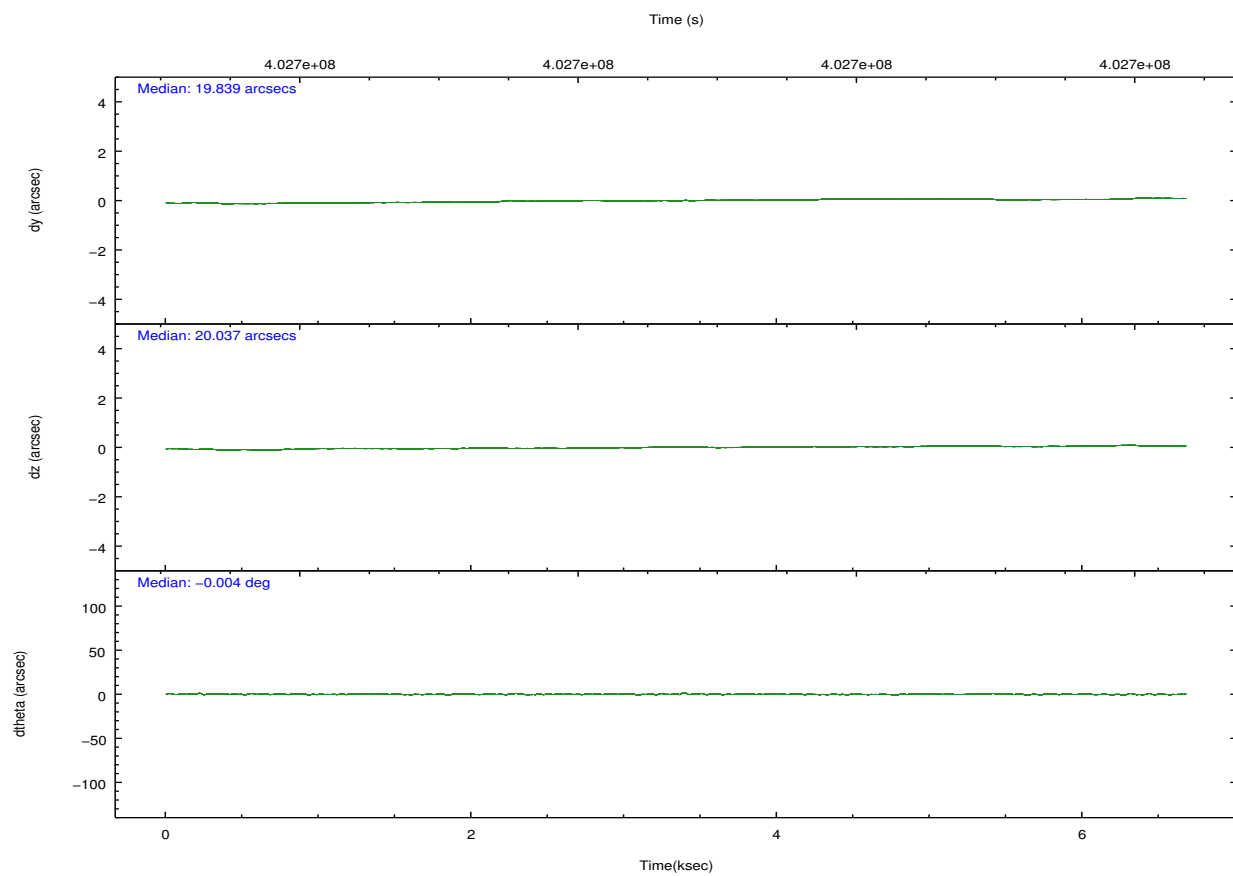
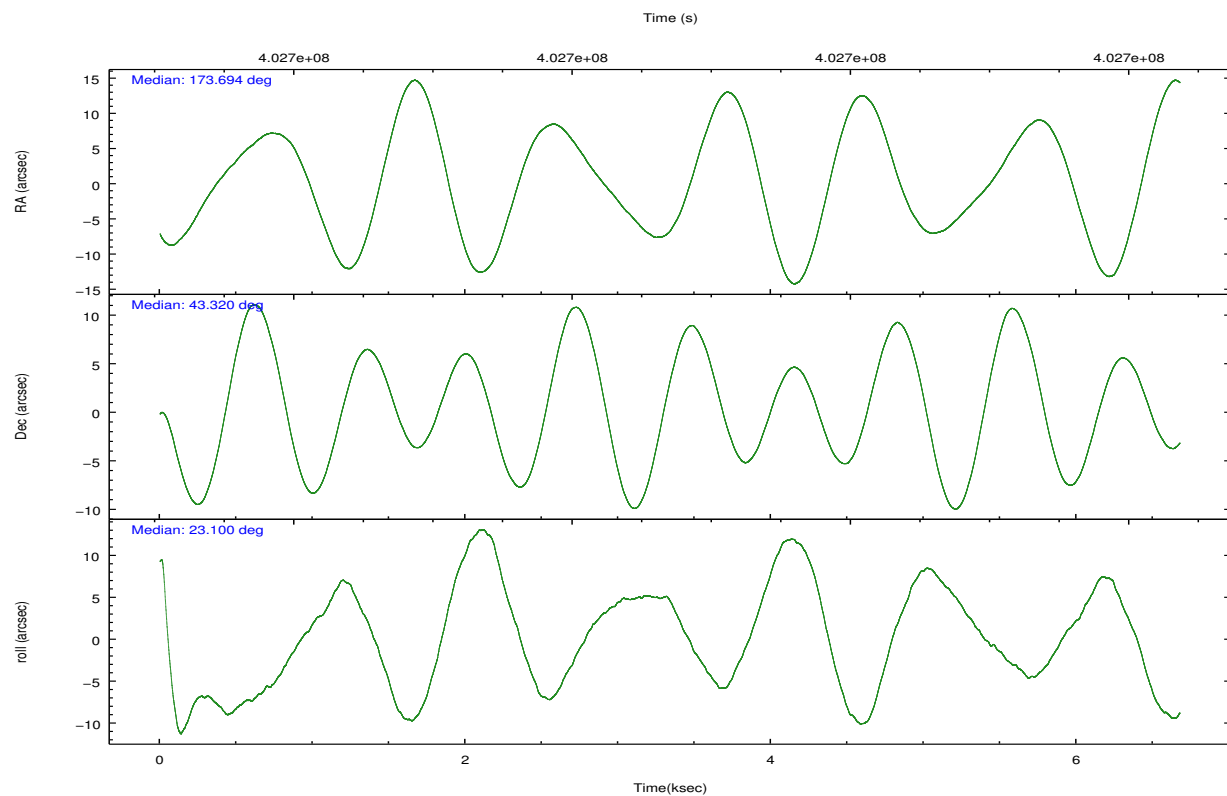
	ccd 5	ccd 6	ccd 7	ccd 8
grade 0 events	4839	1680	2247	4684
	6%	3%	4%	8%
grade 1 events	137	13	56	46
	0%	0%	0%	0%
grade 2 events	10410	1135	5148	3432
	14%	2%	9%	5%
grade 3 events	1399	539	2226	1643
	1%	1%	4%	2%
grade 4 events	1354	493	2164	1570
	1%	1%	3%	2%
grade 5 events	5293	1998	5694	2969
	7%	4%	10%	5%
grade 6 events	17593	1095	13035	3910
	25%	2%	23%	6%
grade 7 events	29160	39126	23777	39162
	41%	84%	43%	68%

2.2 Compared Parameters

Parameter	Planned	Actual	Parameter	Planned	Actual
Instrument	ACIS	ACIS	Obspar format version number	7	7
Detector	ACIS-5678	ACIS-5678	Obspar file type	PREDICTED	ACTUAL
Grating	NONE	NONE	Obspar update status	NONE	UPDATED
Data mode	FAINT	FAINT	Number of optional ACIS chips dropped	0	0
Observation mode	POINTING	POINTING	On-chip summing requested	N	N
[deg] Pointing RA	173.672541	173.6946476253988	Subarray requested	NONE	NONE
[deg] Pointing Dec	43.297981	43.32001423250275	Alternating exposures requested	N	N
[deg] Pointing Roll	22.960503	23.10199226679014	[s] Primary exposure time	0.000000	3.1
[mm] SIM focus pos	-0.684267	-0.6828225247311905			
[mm] SIM defocus	0	0.001444936568705701			
[mm] SIM translation stage pos	-190.132523	-190.145094680475			
[mm] SIM translation stage offset	0	0.01257209746719923			
[s] Observation start time (MET)	402696042.184000	402694924.097			
Observation start date	2010-10-05T19:59:36	2010-10-05T19:42:04			
[s] Observation end time (MET)	402702042.184000	402702827.87241			
Observation end date	2010-10-05T21:39:36	2010-10-05T21:53:47			
Read mode	TIMED	TIMED			

2.3 Aspect



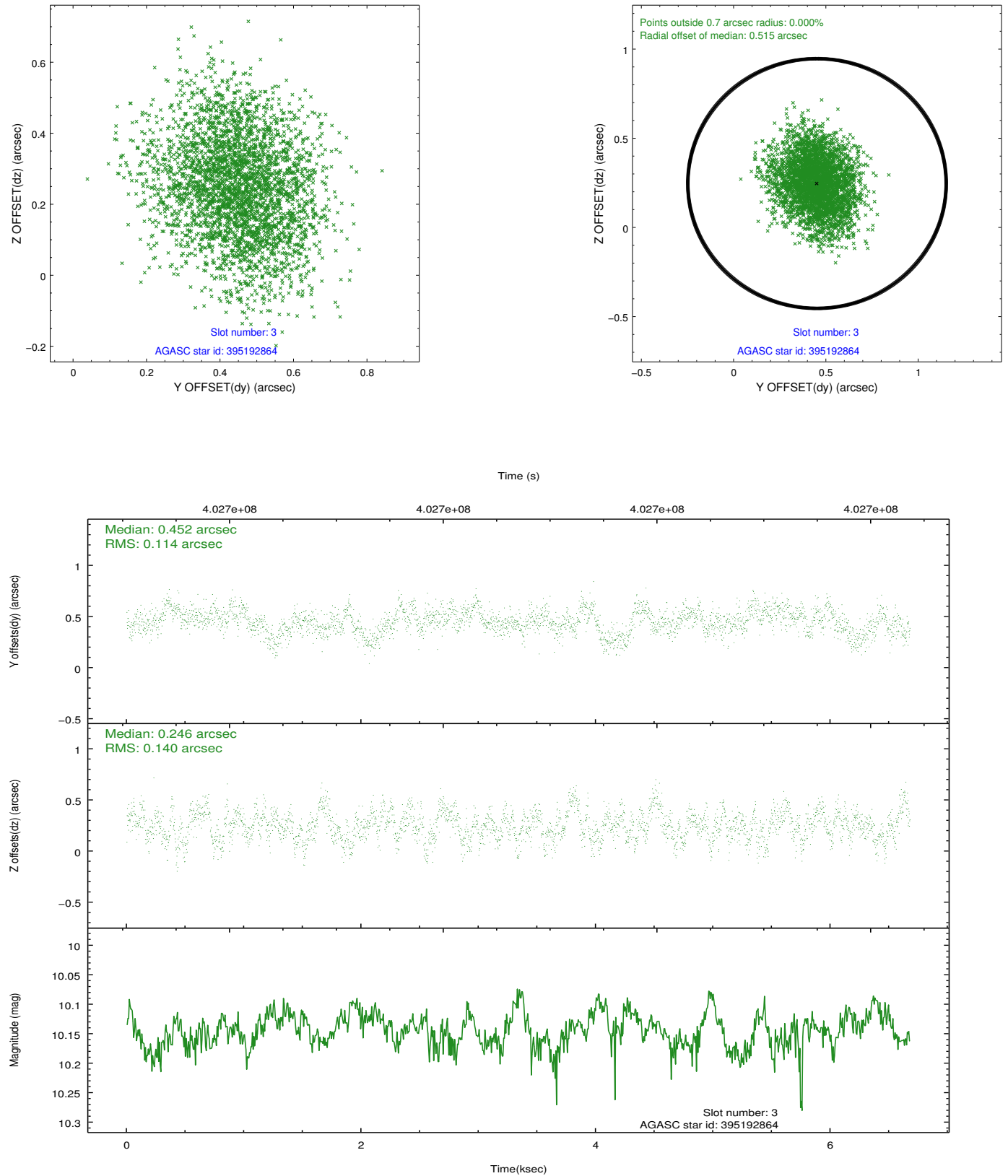


Slot Statistics

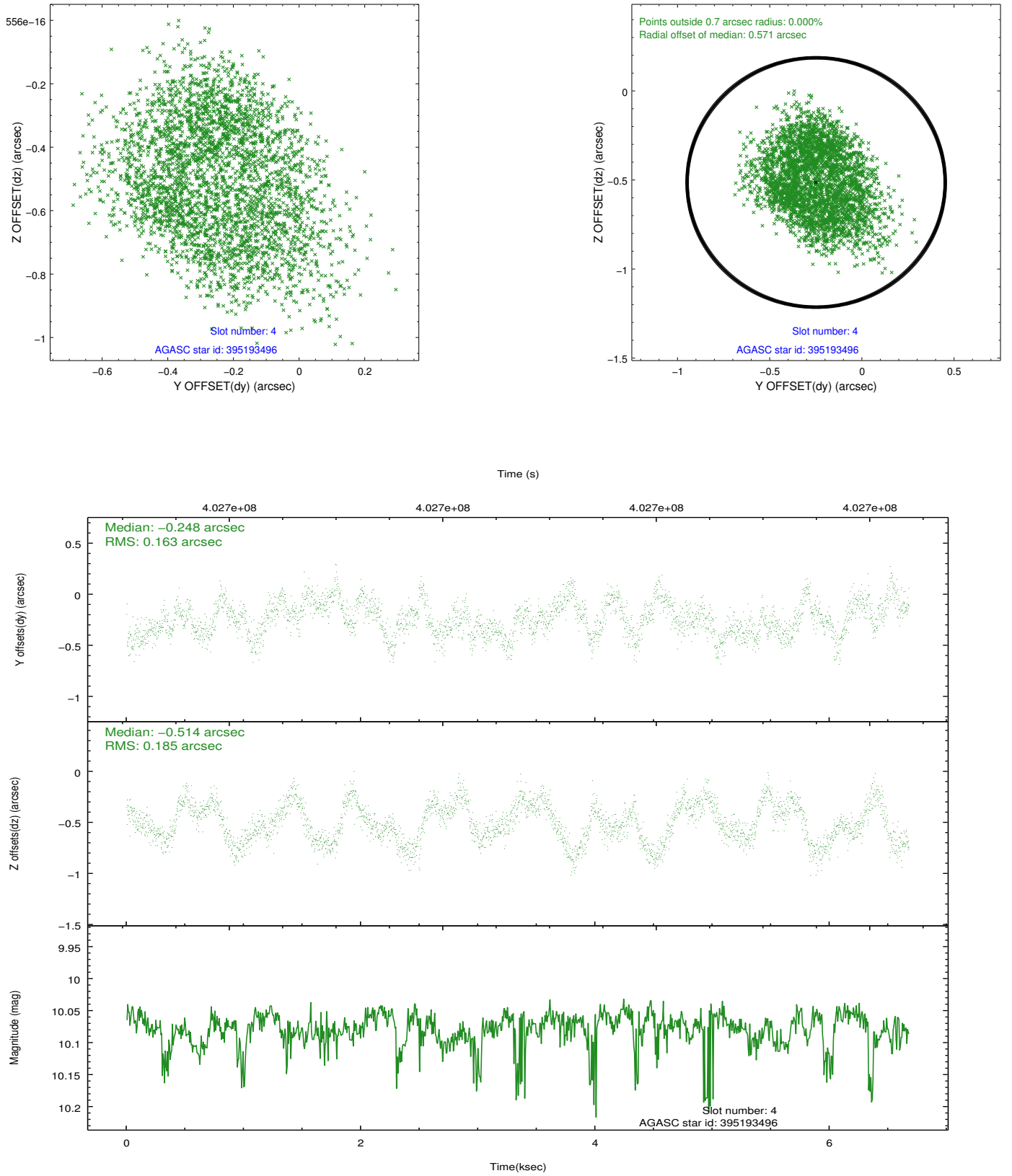
slot	status	id	mag	n_pts	med_dy	med_dz	dr1	dr2	ra	dec	mean_y	mean_z
0	FID	ACIS-S-2	6.89	1628	-0.106	-0.024	0.007	0.011	0.000000	0.000000	-773.05	-1741.46
1	FID	ACIS-S-4	6.96	1629	0.215	0.058	0.006	0.010	0.000000	0.000000	2140.16	166.18
2	FID	ACIS-S-5	7.00	1629	-0.139	-0.025	0.006	0.011	0.000000	0.000000	-1824.80	160.78
3	GUIDE	395192864	10.14	3250	0.452	0.246	0.194	0.309	173.864383	42.895725	-97.77	-1529.90
4	GUIDE	395193496	10.08	3248	-0.248	-0.514	0.265	0.397	174.748665	42.990814	2185.31	-2107.71
5	GUIDE	395195784	6.60	3258	0.048	-0.125	0.146	0.226	172.618526	43.578491	-2131.54	2019.29
6	GUIDE	395200512	8.42	3254	-0.064	-0.047	0.127	0.226	173.751377	43.626285	650.29	1008.50
7	GUIDE	395191320	9.89	3246	-0.204	0.431	0.175	0.281	174.713268	43.213666	2403.01	-1328.12

2.4 Star Slots

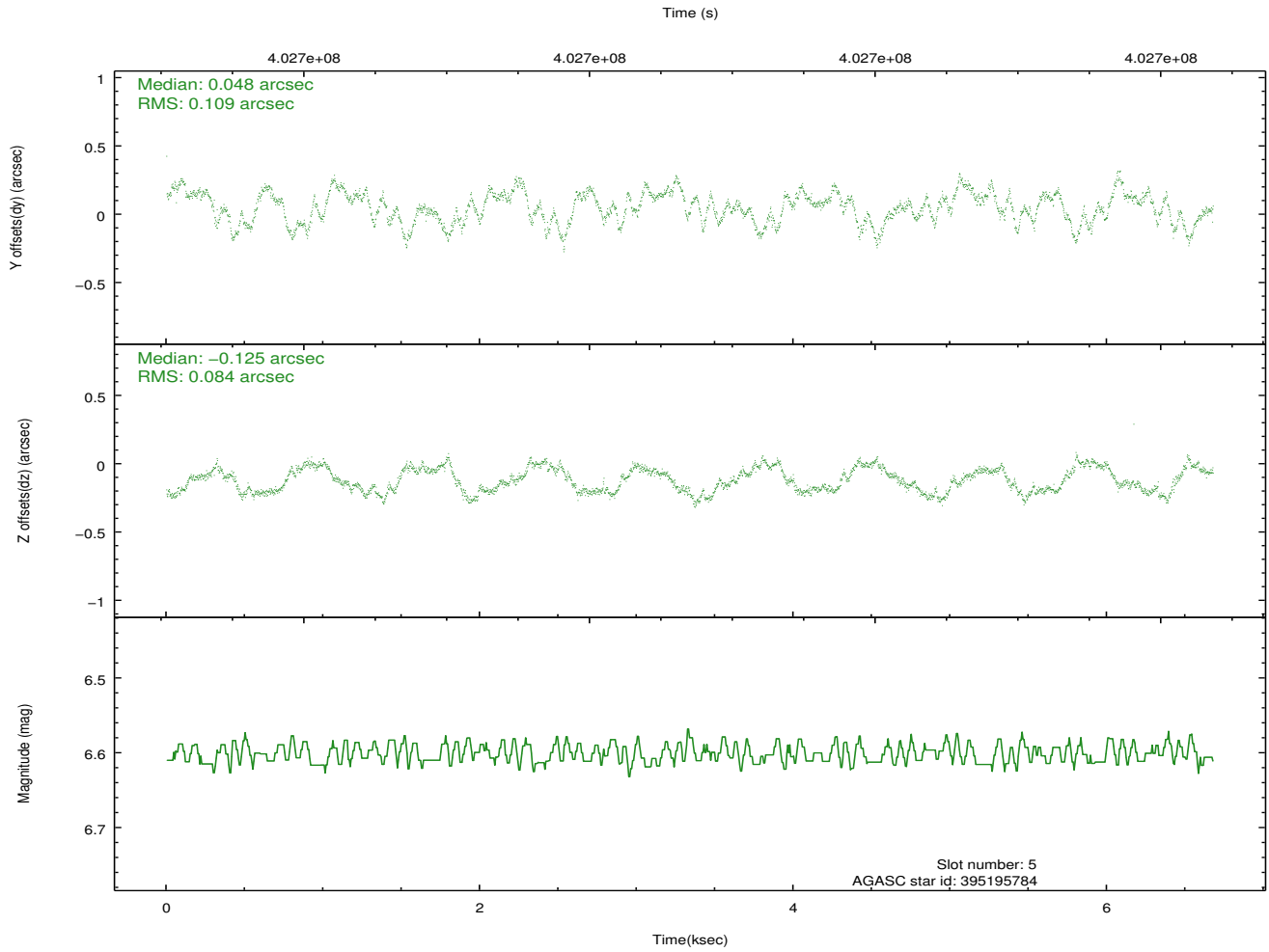
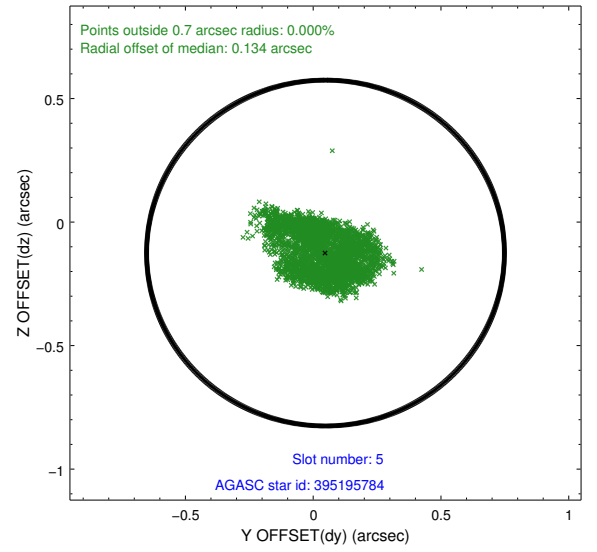
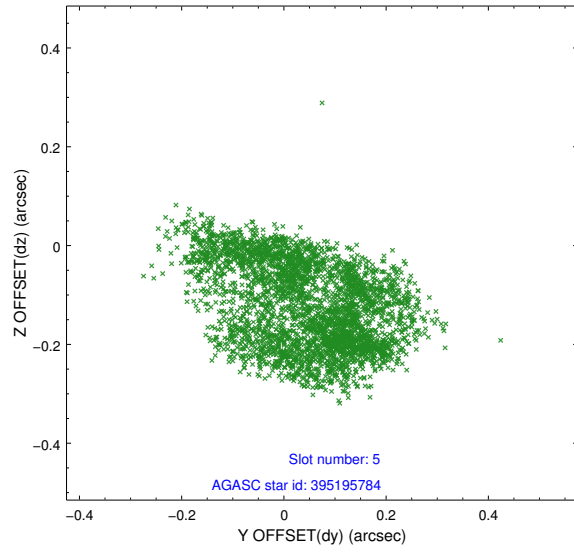
2.4.1 Slot 3



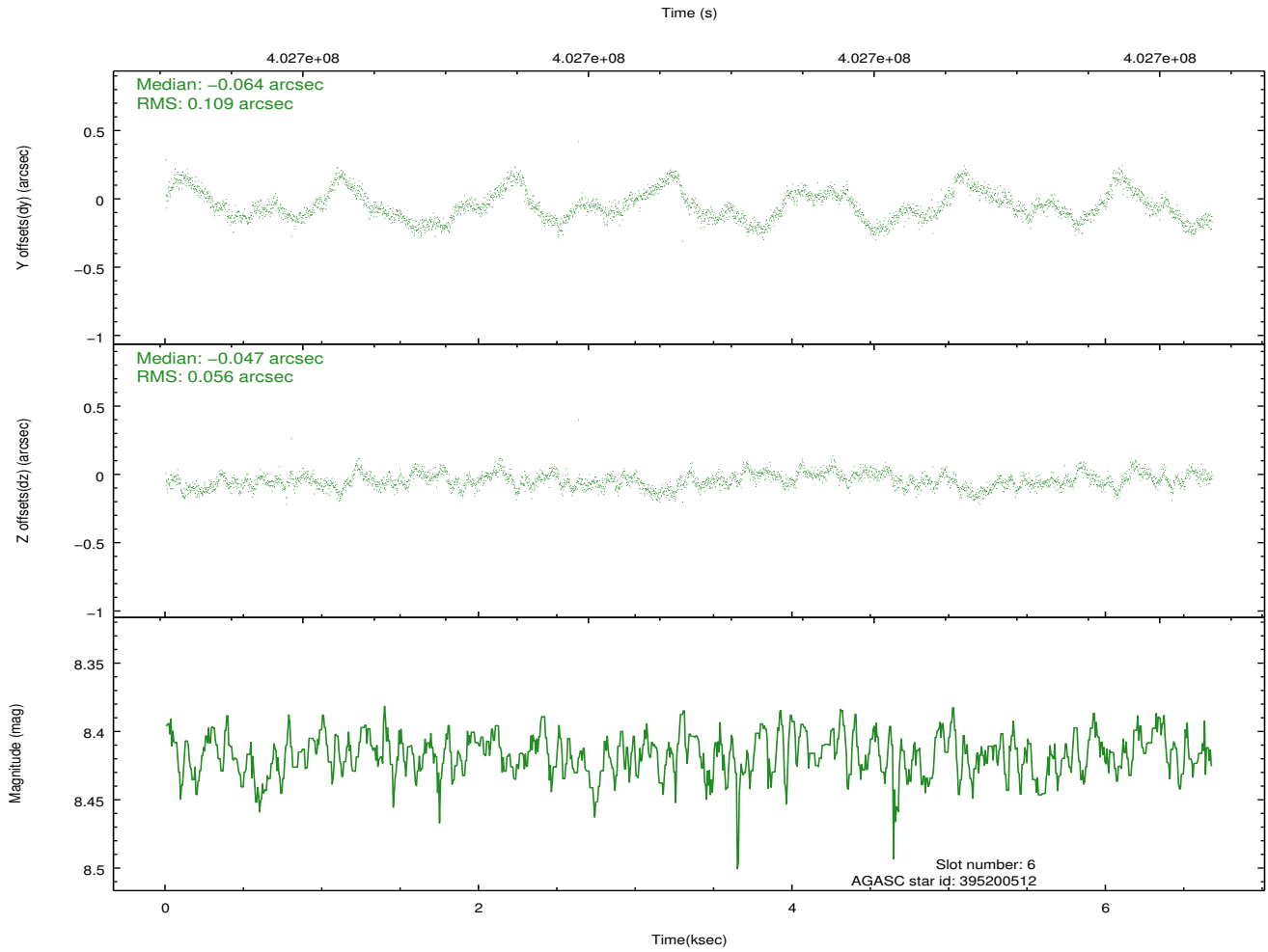
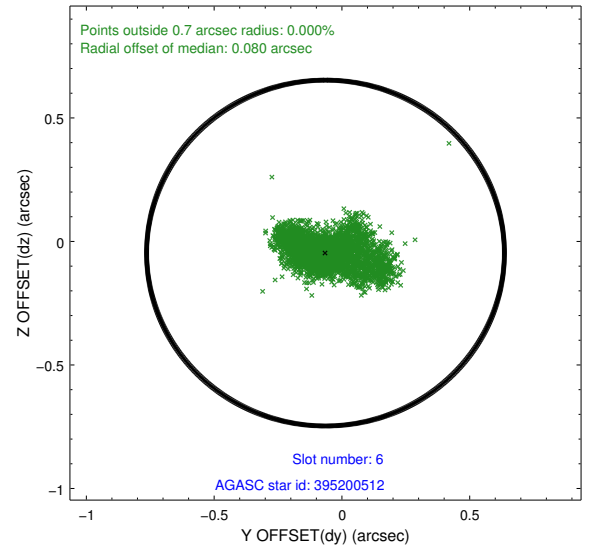
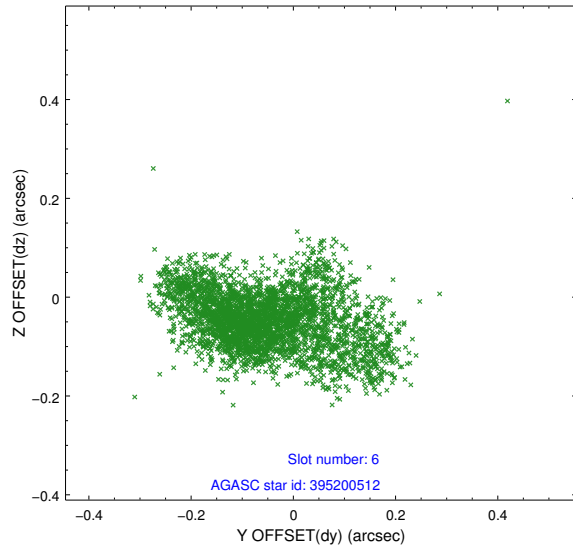
2.4.2 Slot 4



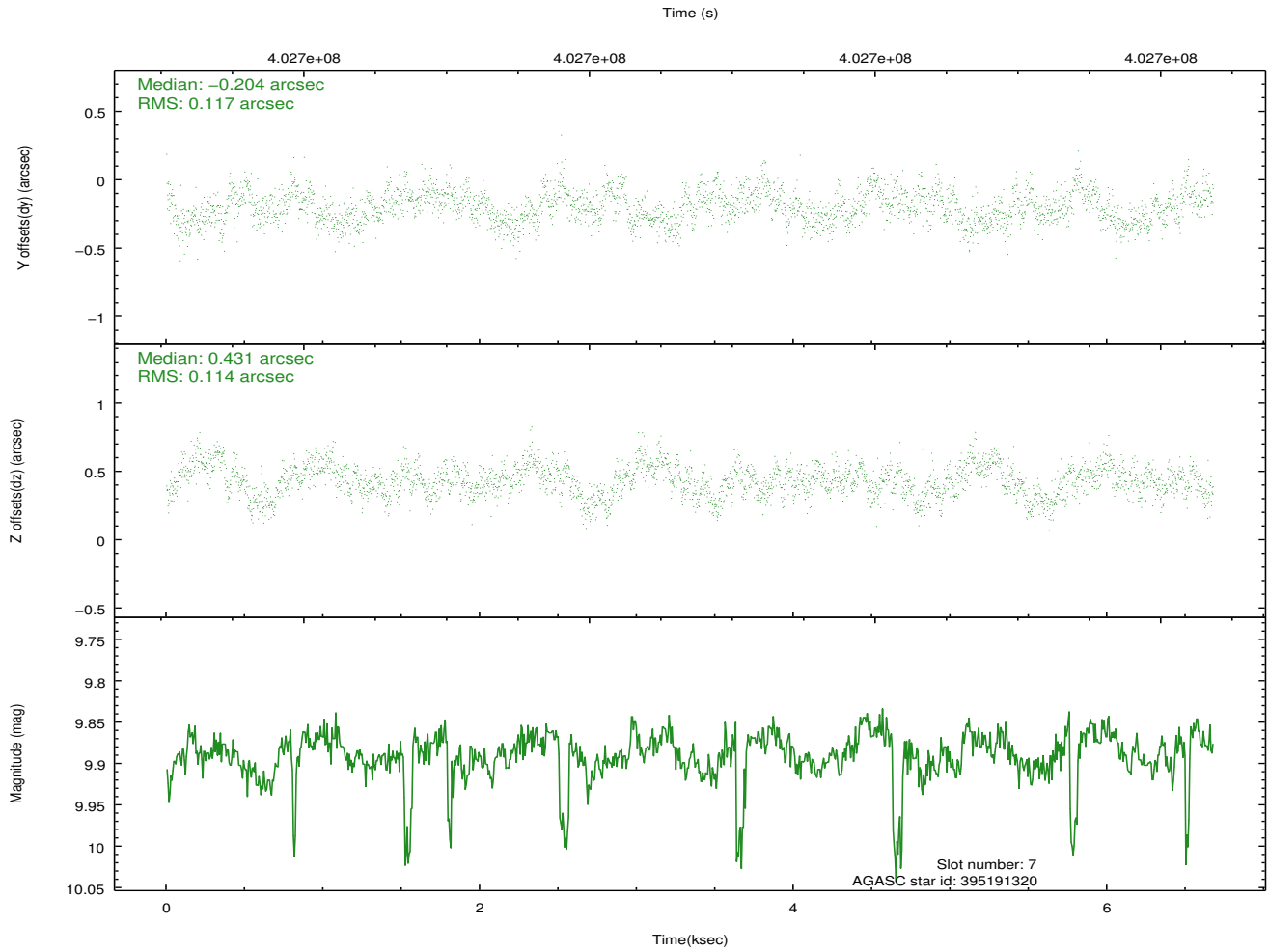
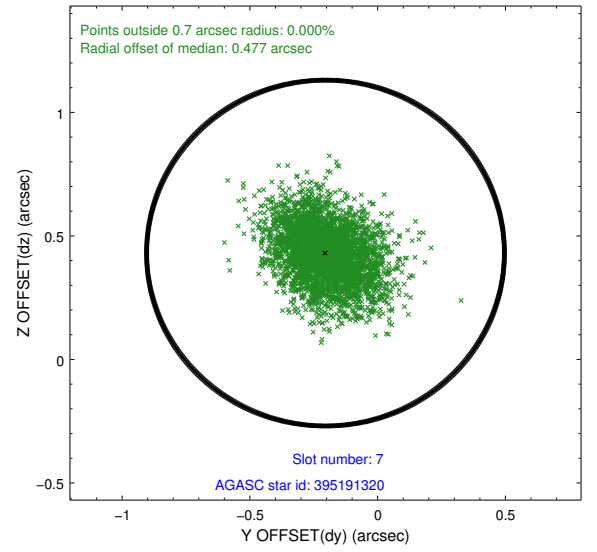
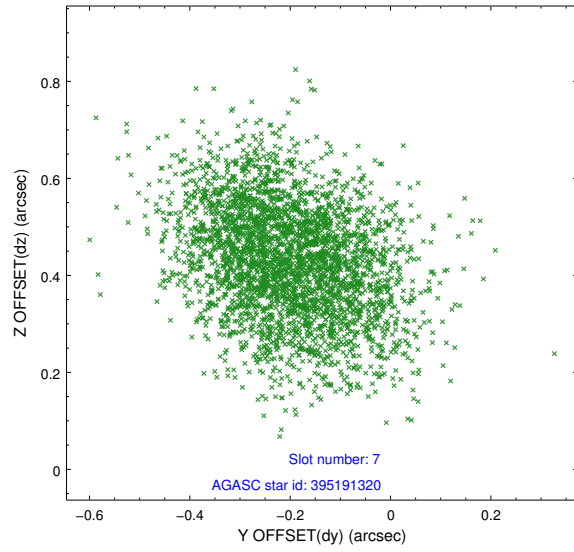
2.4.3 Slot 5



2.4.4 Slot 6

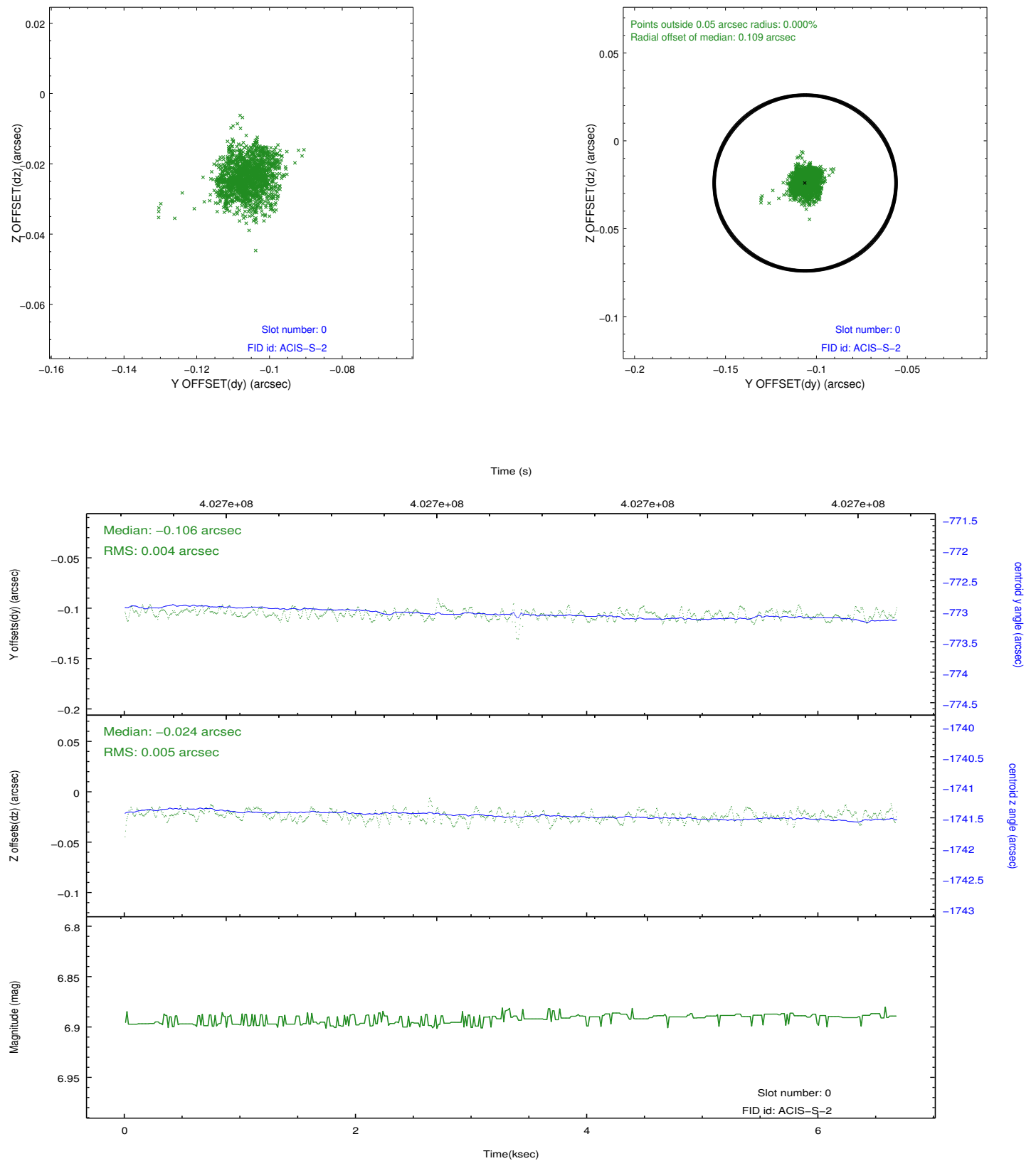


2.4.5 Slot 7

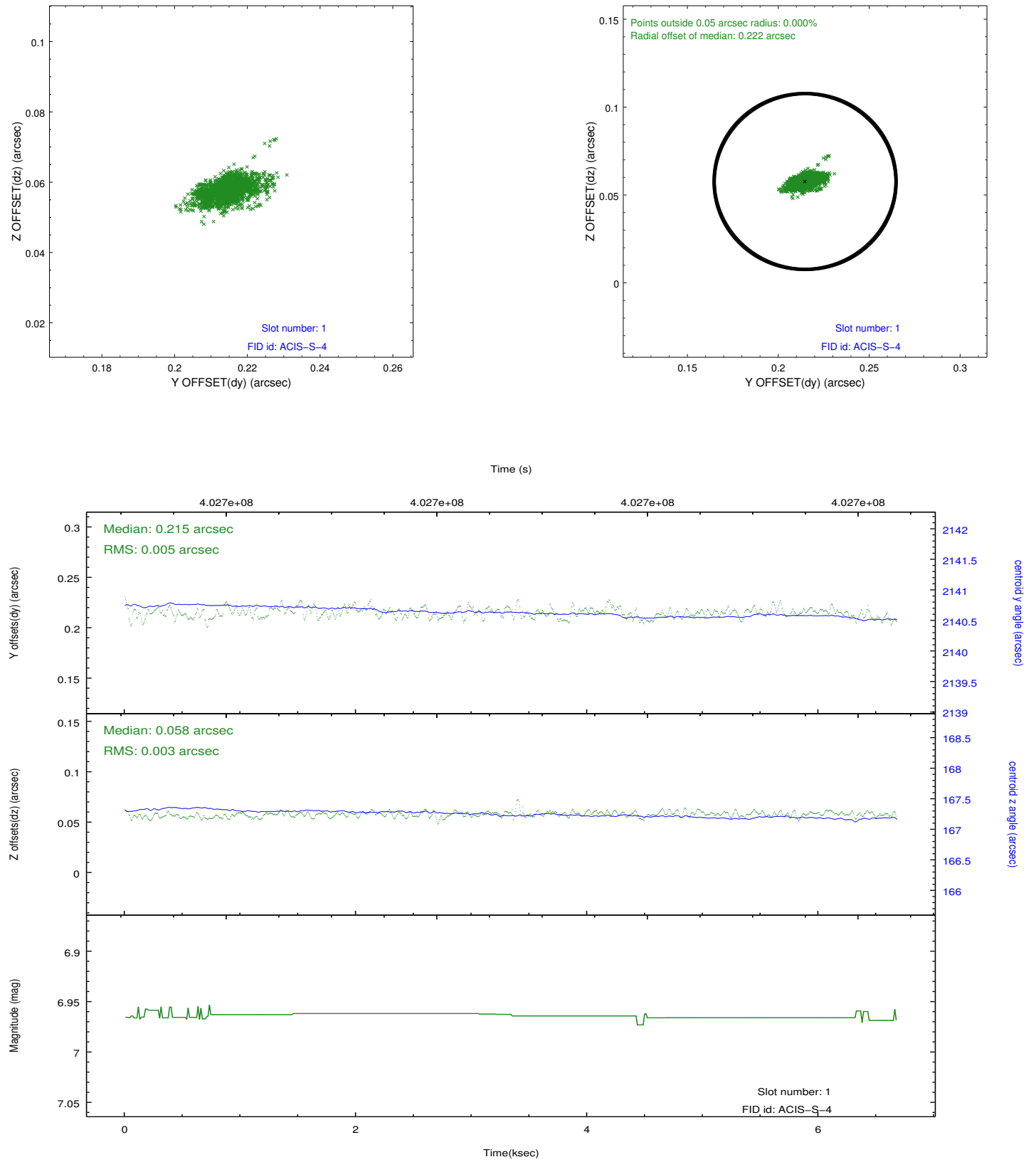


2.5 FID Slots

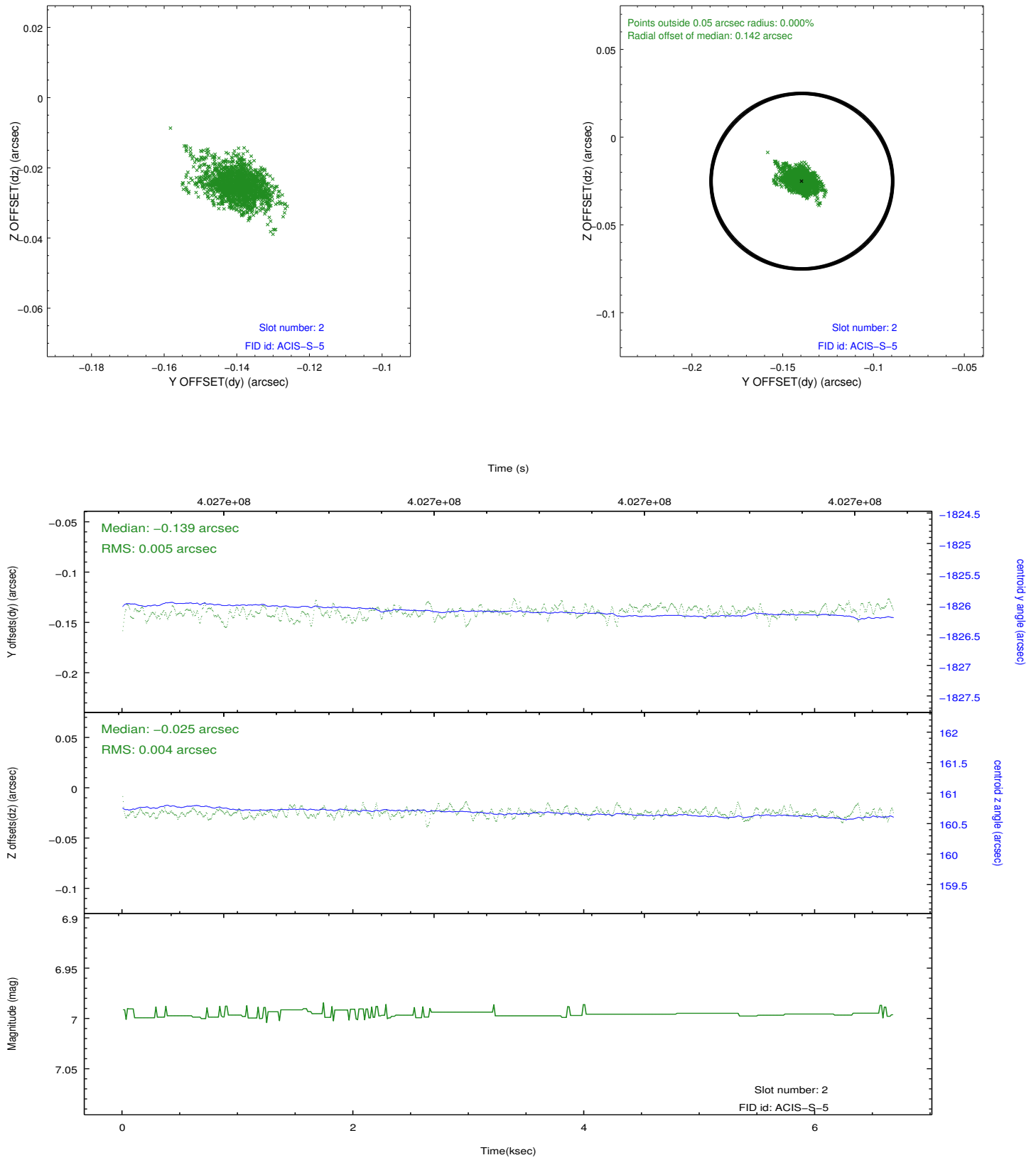
2.5.1 Slot 0



2.5.2 Slot 1



2.5.3 Slot 2



A Summary

A.1 Status

V&V Scientist	Jen Lauer
V&V Date (YYYY-MM-DD)	2012.07.12
V&V Edition	1
V&V Disposition and Status	OK
V&V Charge Time	6.0481000465155

A.2 Comments