

V&V Reference Report

L2 ASCDS Version : 8.4.5

Observation 11691 - L2 Version 2
Chandra X-Ray Center

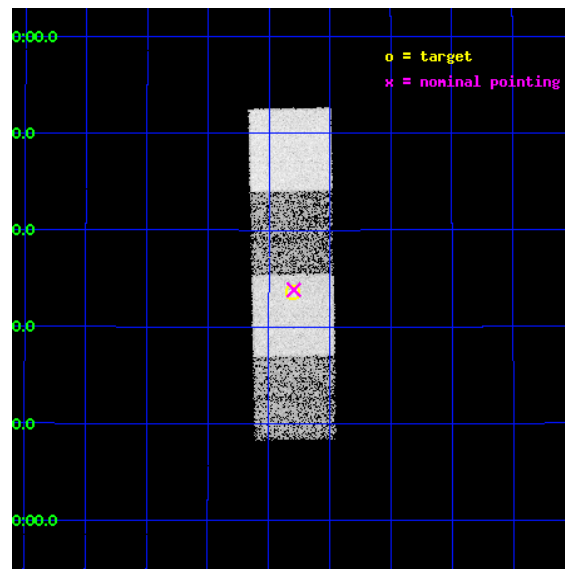
L2 Processing Date : Jun 18 2012

Contents

1	Front	2
2	OBI	3
2.1	OBI	3
2.1.1	Images	3
2.1.2	Bias	3
2.1.3	Parameters	4
2.1.4	Events	4
2.2	Compared Parameters	5
2.3	Aspect	6
2.4	Star Slots	9
2.4.1	Slot 3	9
2.4.2	Slot 4	10
2.4.3	Slot 5	11
2.4.4	Slot 6	12
2.4.5	Slot 7	13
2.5	FID Slots	14
2.5.1	Slot 0	14
2.5.2	Slot 1	15
2.5.3	Slot 2	16
A	Summary	17
A.1	Status	17
A.2	Comments	17

1 Front

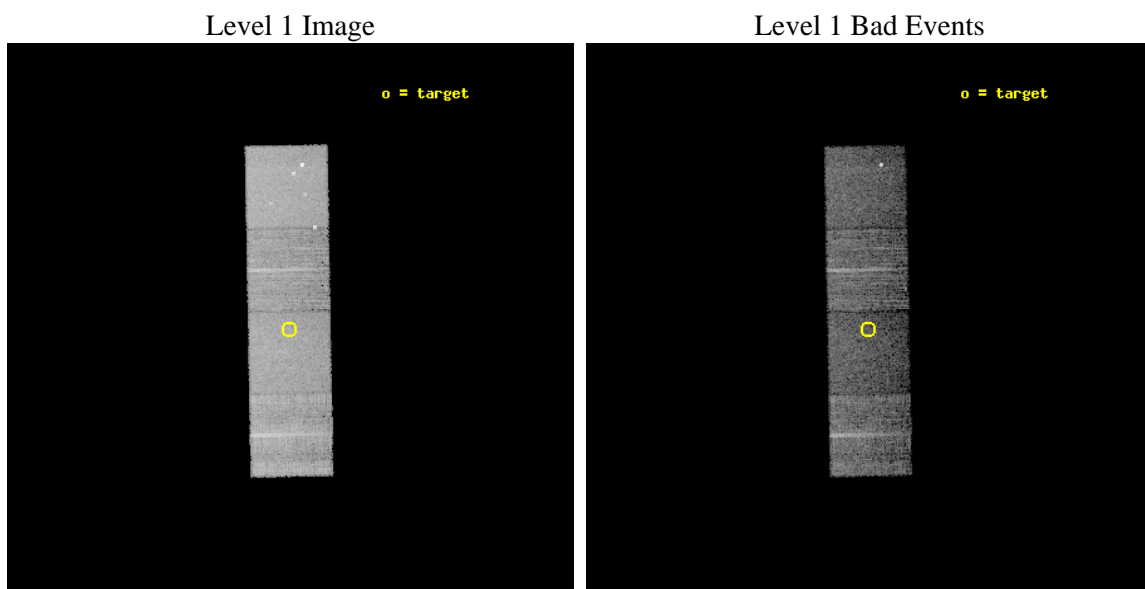
seq_num	702276	Sequence number
obs_id	11691	Observation id
title	Chandra survey of Polar Broad Absorption-Line Quasars	Proposal tit
observer	Dr. Kajal Ghosh	Principal investigator
object	SDSS J093348.37+313335.2	Source name
dtcycle	0	
cycle	P	events from which exps? Prim/Second/Both
ra_targ	143.451667	Observer's specified target RA [deg]
dec_targ	31.559778	Observer's specified target Dec [deg]
ra_nom	143.44874168916	Nominal RA [deg]
dec_nom	31.563909206222	Nominal Dec [deg]
roll_nom	88.941019635158	Nominal Roll [deg]
revision	2	Processing version of data
ontime	6181.4000475407	Sum of GTIs [s]
livetime	6100.635505239	Livetime [s]
ontime5	6181.4000475407	Sum of GTIs [s]
ontime6	6181.4000475407	Sum of GTIs [s]
ontime7	6181.4000475407	Sum of GTIs [s]
ontime8	6181.4000475407	Sum of GTIs [s]
l2events	73962	Number of level 2 events



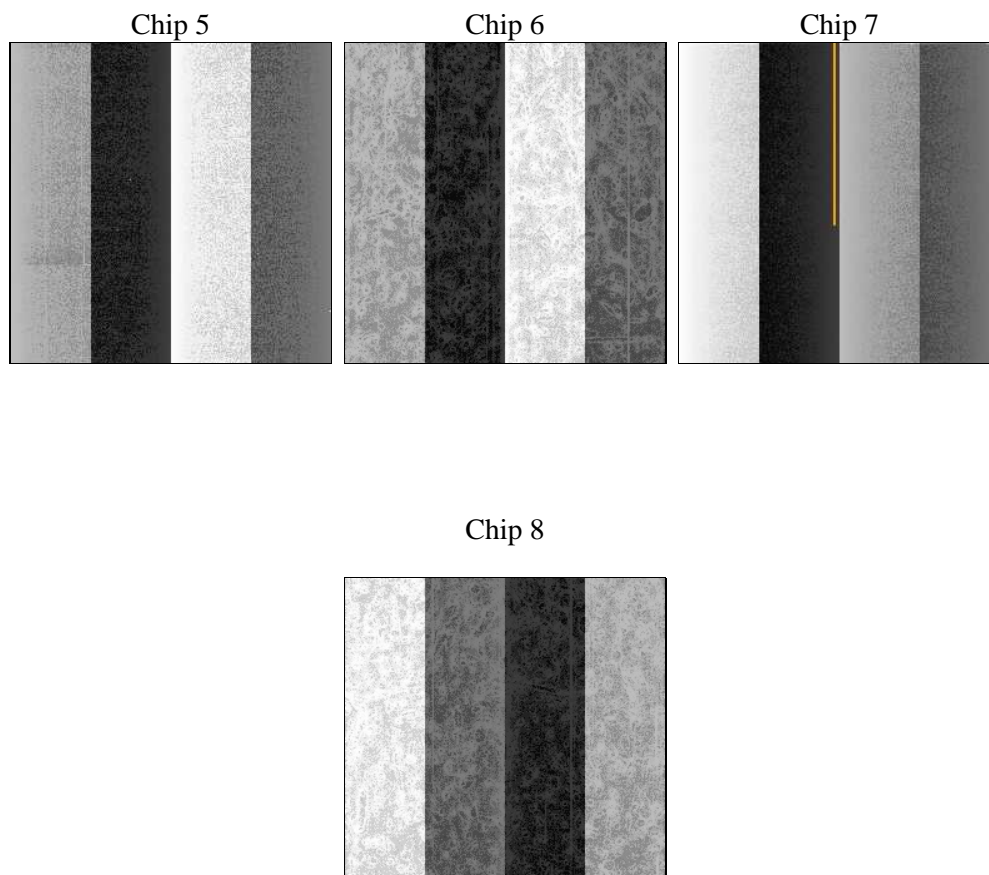
2 OBI

2.1 OBI

2.1.1 Images



2.1.2 Bias



2.1.3 Parameters

obi_num	0	Obi number	sched_exp_time	6000.000000	[s] Scheduled observation exposure time
ascdsver	8.4.5	Processing system revision	ontime	6181.4000475407	Sum of GTIs [s]
caldsver	4.4.10	 	ontime5	6181.4000475407	Sum of GTIs [s]
date	2012-06-18T19:18:07	Date and time of file creation	ontime6	6181.4000475407	Sum of GTIs [s]
revision	2	Processing version of data	ontime7	6181.4000475407	Sum of GTIs [s]
			ontime8	6181.4000475407	Sum of GTIs [s]
			l1events	302295	Number of level 1 events

2.1.4 Events

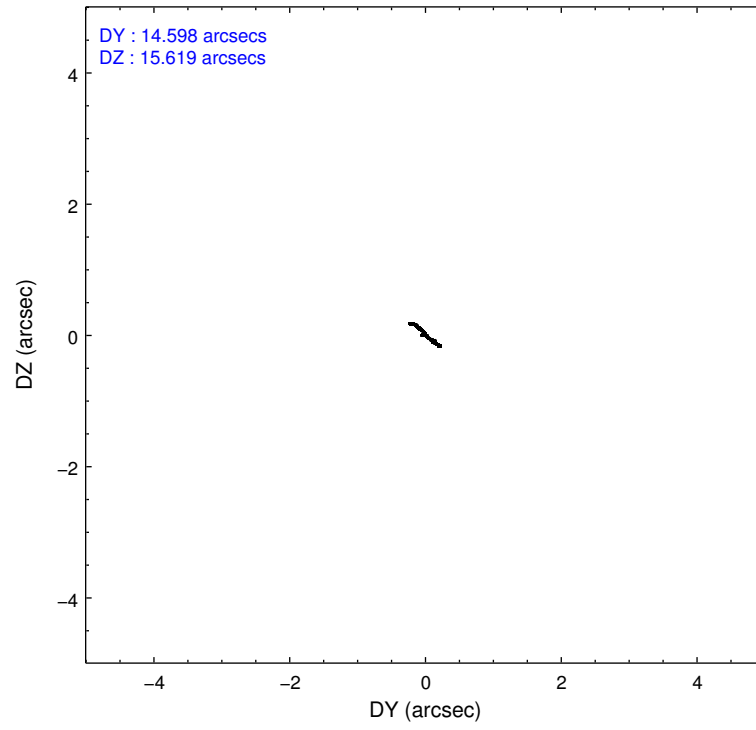
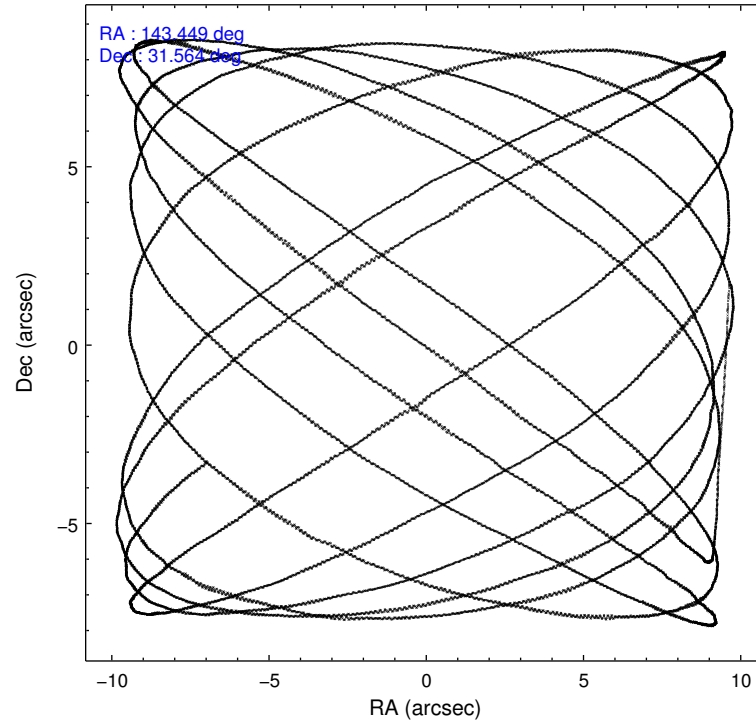
	ccd 5	ccd 6	ccd 7	ccd 8
level 1 events	90330	61792	70425	79748
rejected events	50565	56178	42490	61520
rejected %	55%	90%	60%	77%

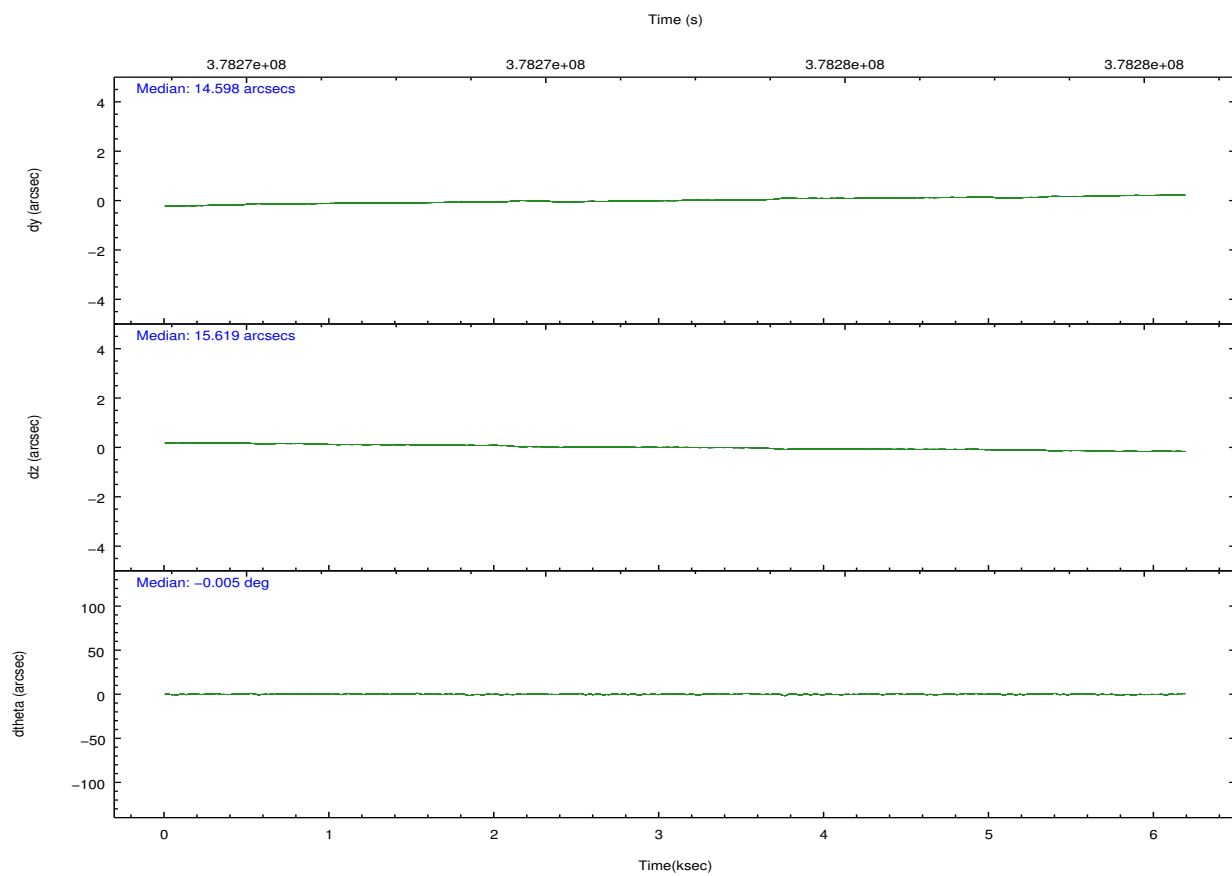
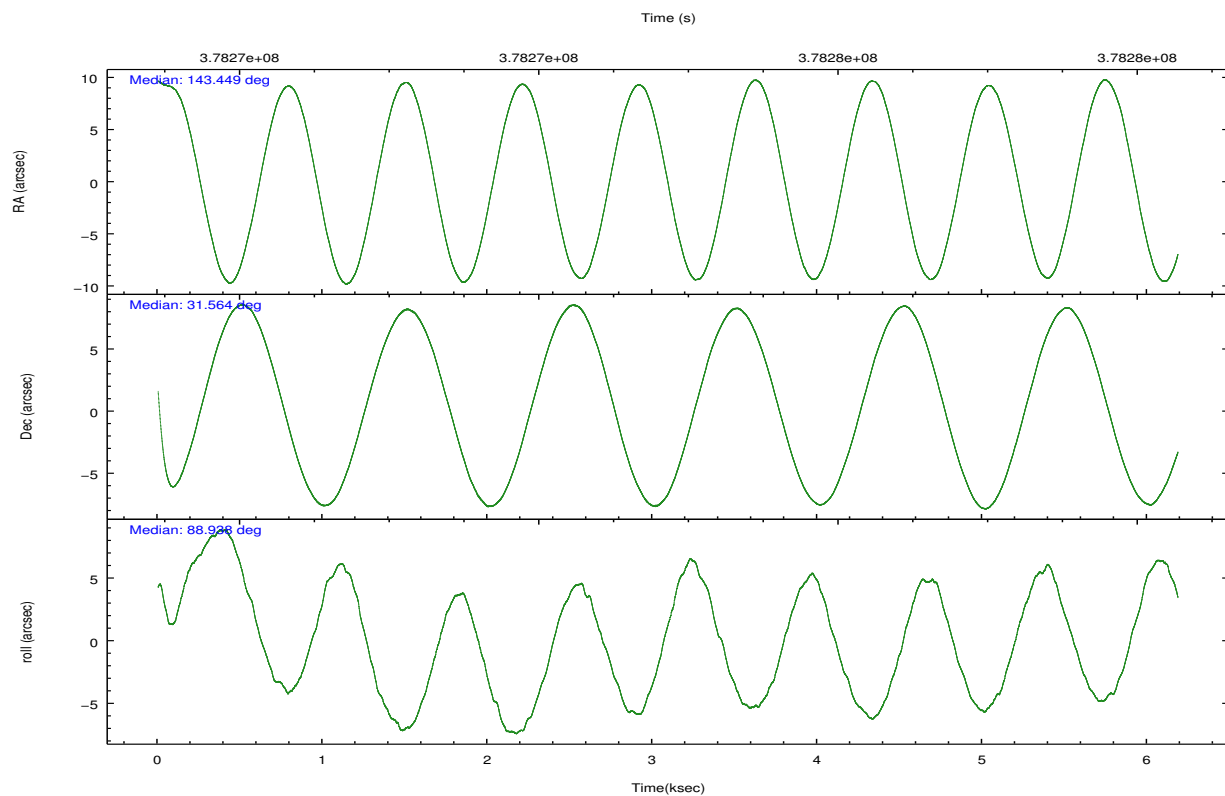
	ccd 5	ccd 6	ccd 7	ccd 8
grade 0 events	4997	2258	3056	6159
	5%	3%	4%	7%
grade 1 events	185	32	100	82
	0%	0%	0%	0%
grade 2 events	14047	1447	6505	4919
	15%	2%	9%	6%
grade 3 events	1746	672	2907	2198
	1%	1%	4%	2%
grade 4 events	1630	653	2927	2017
	1%	1%	4%	2%
grade 5 events	6911	2625	7470	3855
	7%	4%	10%	4%
grade 6 events	23228	1404	16678	5561
	25%	2%	23%	6%
grade 7 events	37586	52701	30782	54957
	41%	85%	43%	68%

2.2 Compared Parameters

Parameter	Planned	Actual	Parameter	Planned	Actual
Instrument	ACIS	ACIS	Obspar format version number	7	7
Detector	ACIS-5678	ACIS-5678	Obspar file type	PREDICTED	ACTUAL
Grating	NONE	NONE	Obspar update status	NONE	UPDATED
Data mode	FAINT	FAINT	Number of optional ACIS chips dropped	0	0
Observation mode	POINTING	POINTING	On-chip summing requested	N	N
[deg] Pointing RA	143.464671	143.4487416891553	Subarray requested	NONE	NONE
[deg] Pointing Dec	31.540200	31.56390920622222	Alternating exposures requested	N	N
[deg] Pointing Roll	88.776043	88.94101963515848	[s] Primary exposure time	0.000000	3.1
[mm] SIM focus pos	-0.684267	-0.6828225247311905			
[mm] SIM defocus	0	0.001444936568705701			
[mm] SIM translation stage pos	-190.132523	-190.1400660498719			
[mm] SIM translation stage offset	0	0.00754346686406393			
[s] Observation start time (MET)	378271968.184000	378270575.56543			
Observation start date	2009-12-27T03:31:42	2009-12-27T03:09:35			
[s] Observation end time (MET)	378277968.184000	378278552.62834			
Observation end date	2009-12-27T05:11:42	2009-12-27T05:22:32			
Read mode	TIMED	TIMED			

2.3 Aspect



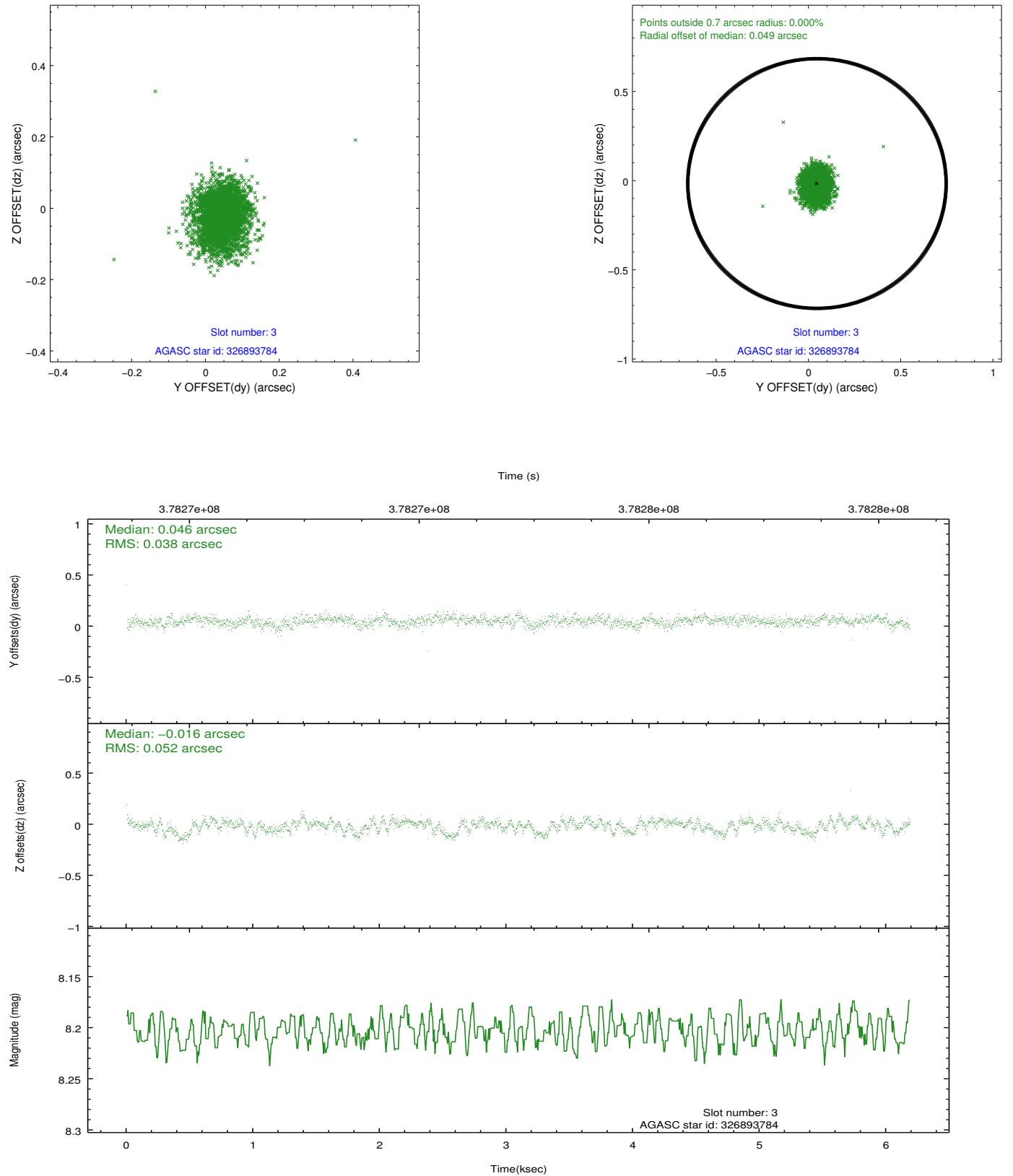


Slot Statistics

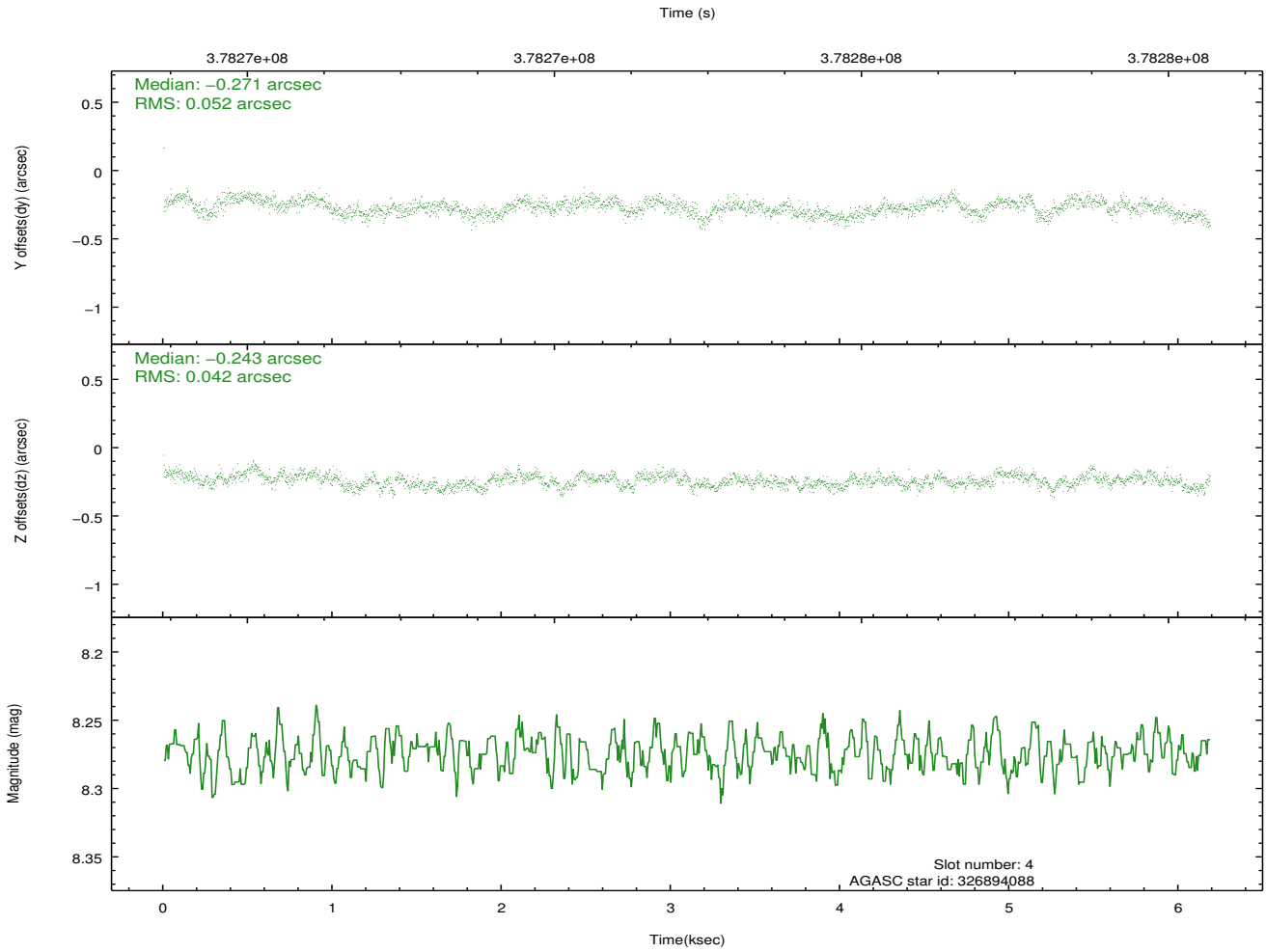
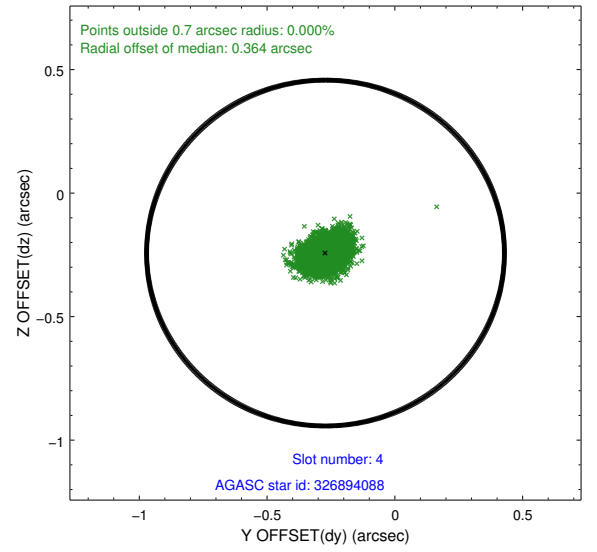
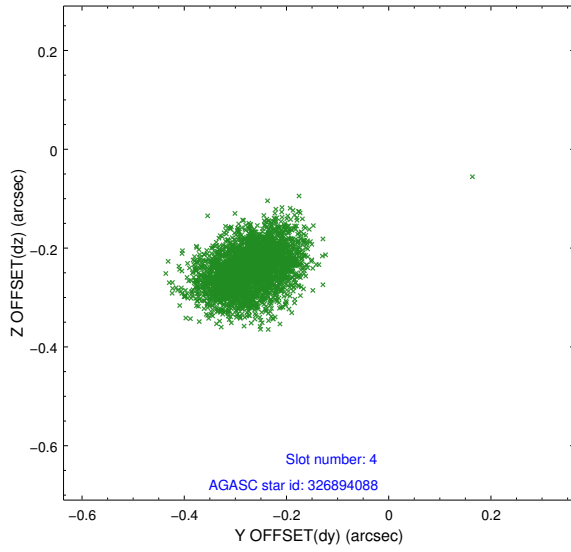
slot	status	id	mag	n_pts	med_dy	med_dz	dr1	dr2	ra	dec	mean_y	mean_z
0	FID	ACIS-S-2	6.88	1509	-0.078	-0.006	0.009	0.015	0.000000	0.000000	-767.63	-1737.03
1	FID	ACIS-S-4	6.96	1509	0.186	0.040	0.008	0.014	0.000000	0.000000	2145.45	170.54
2	FID	ACIS-S-5	6.99	1509	-0.137	-0.026	0.010	0.021	0.000000	0.000000	-1819.33	165.18
3	GUIDE	326893784	8.20	3015	0.046	-0.016	0.067	0.111	143.869697	31.081810	-1620.76	-1282.91
4	GUIDE	326894088	8.27	3018	-0.271	-0.243	0.071	0.112	143.075856	31.877865	1191.57	1213.80
5	GUIDE	326896056	9.33	3016	0.202	0.196	0.114	0.184	143.609851	30.908015	-2264.47	-496.44
6	GUIDE	326900008	9.37	3015	0.085	-0.039	0.109	0.183	143.716539	31.027404	-1828.41	-816.52
7	GUIDE	327812880	9.01	3015	-0.073	0.103	0.105	0.183	144.182144	32.122683	2150.55	-2141.31

2.4 Star Slots

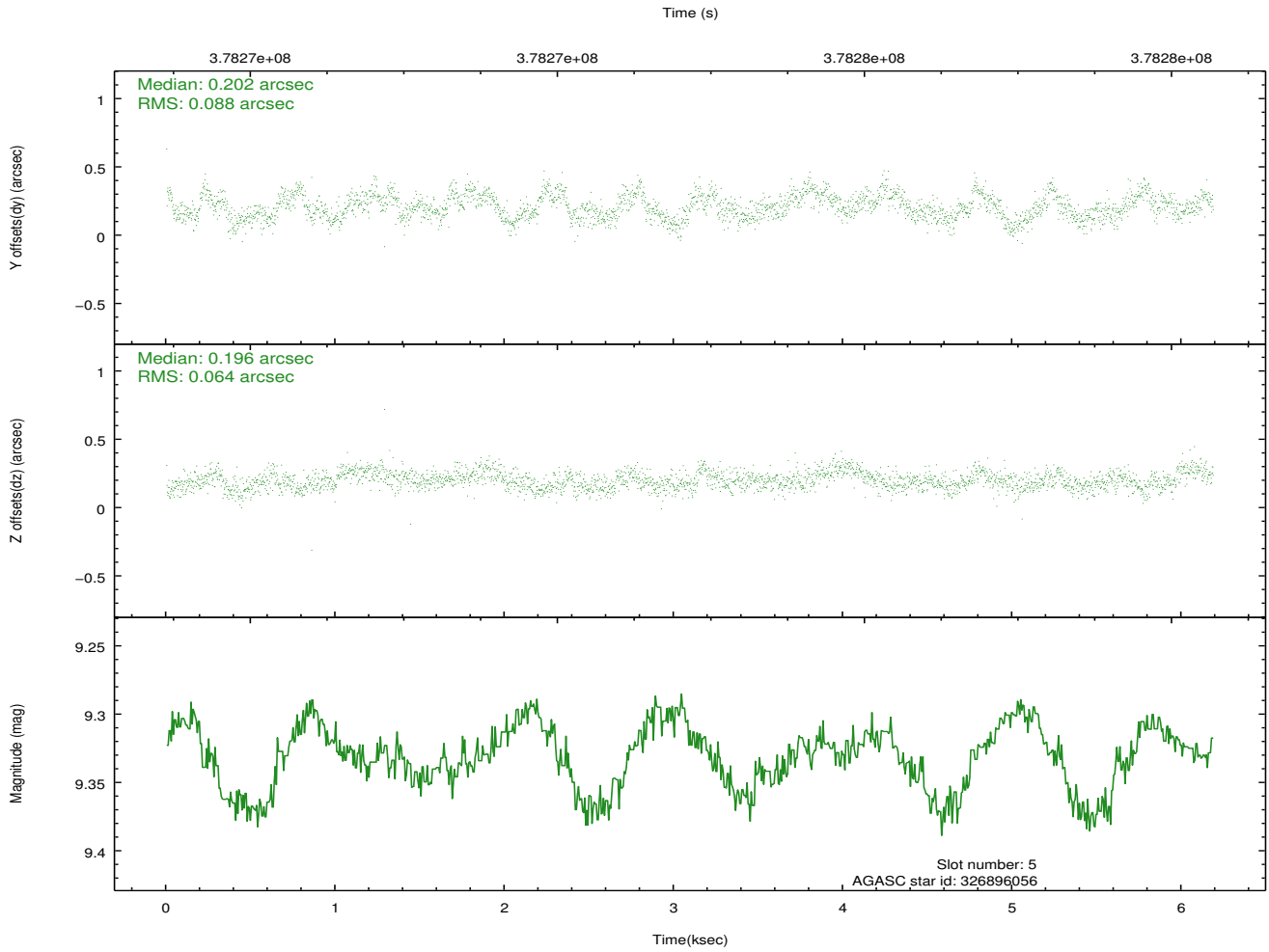
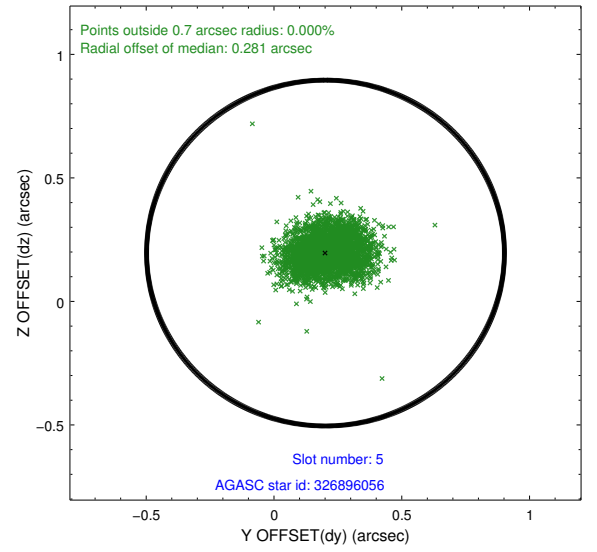
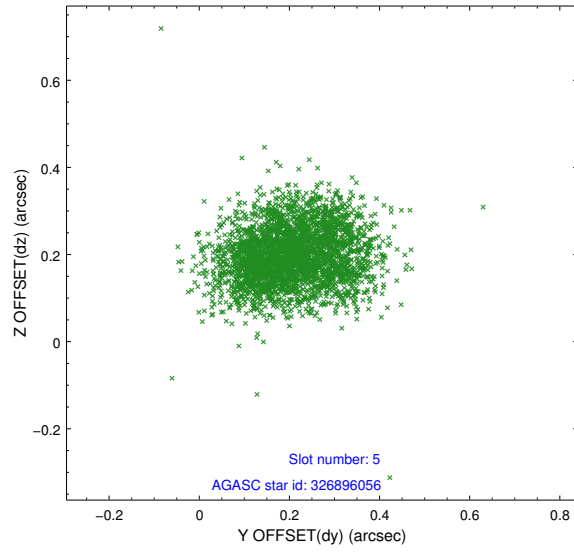
2.4.1 Slot 3



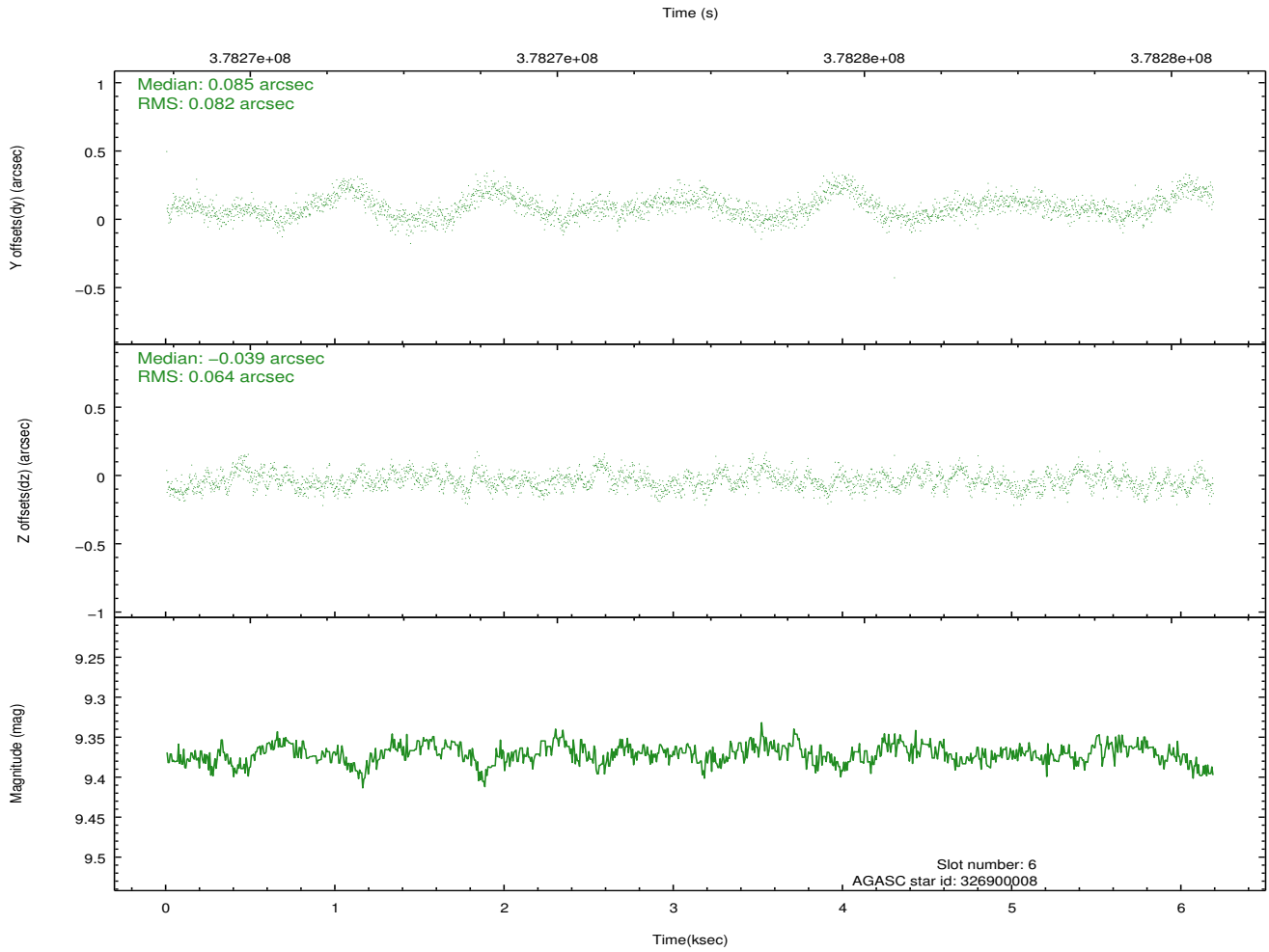
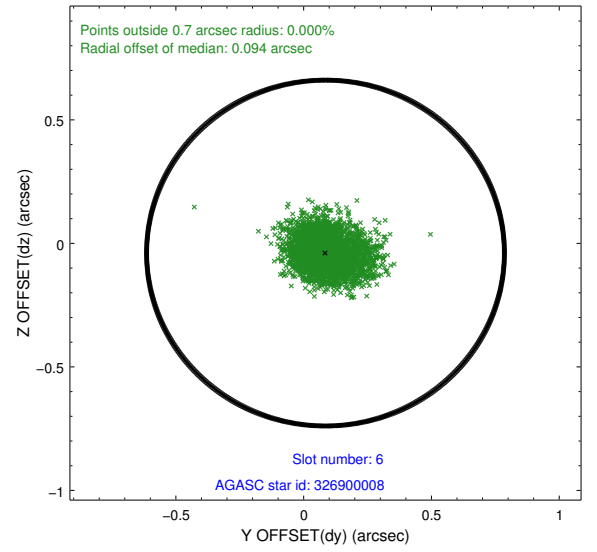
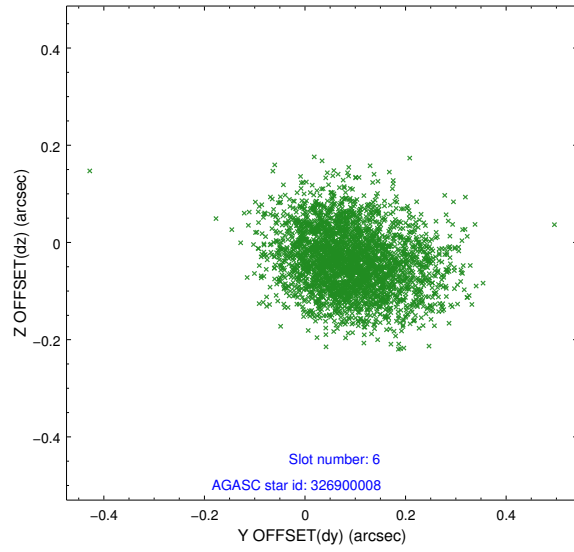
2.4.2 Slot 4



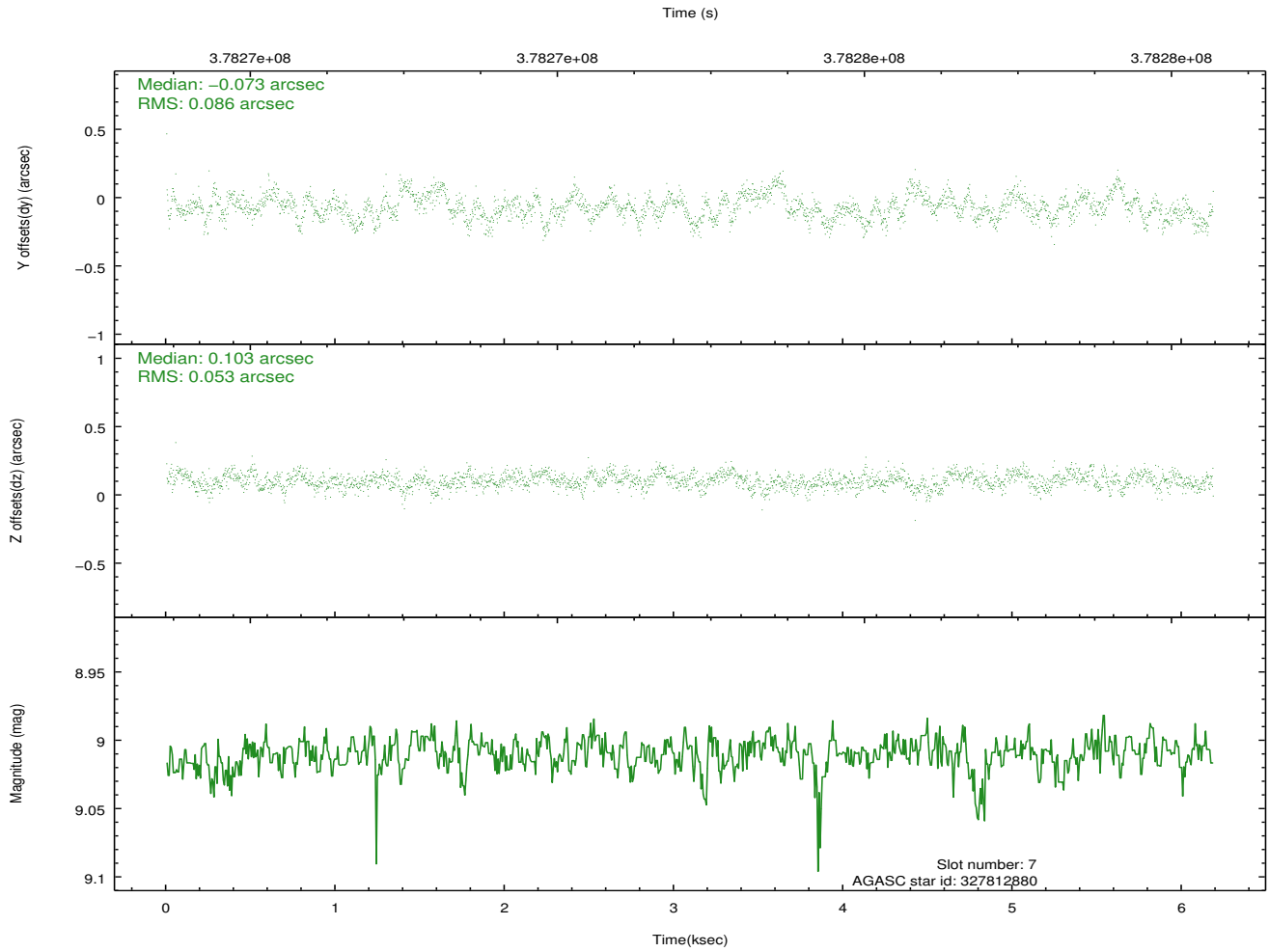
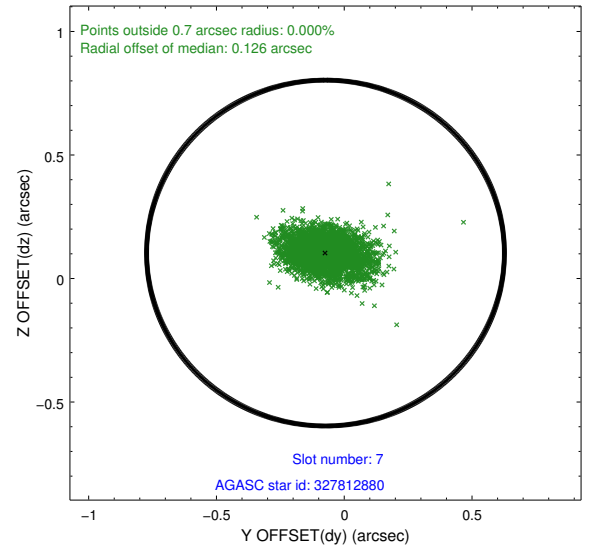
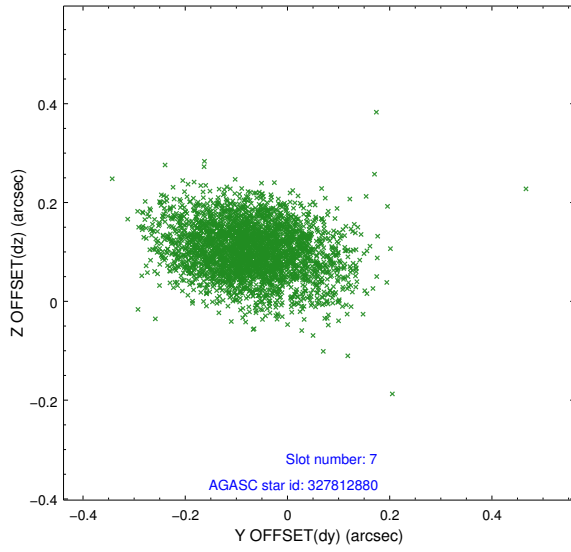
2.4.3 Slot 5



2.4.4 Slot 6

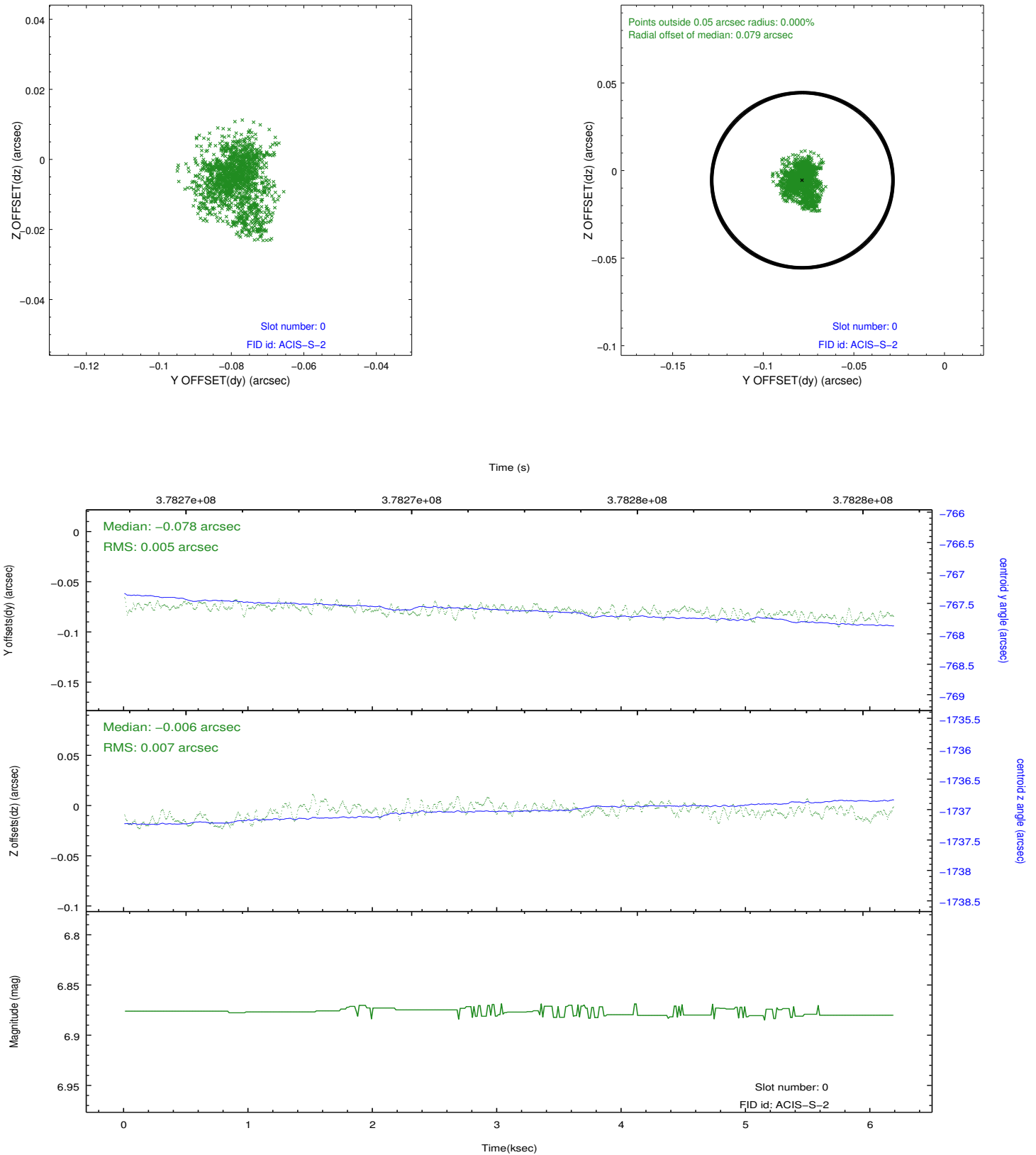


2.4.5 Slot 7

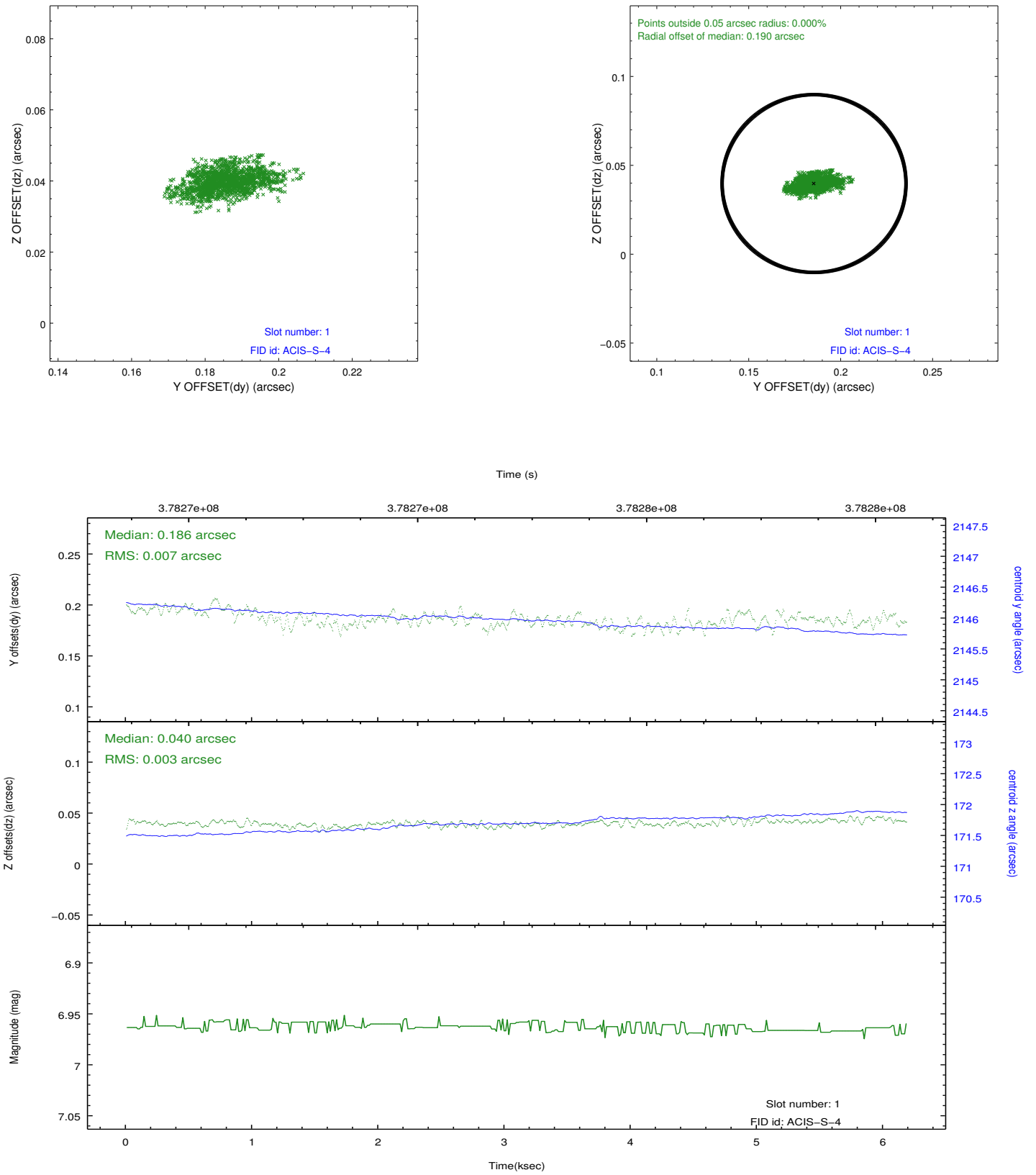


2.5 FID Slots

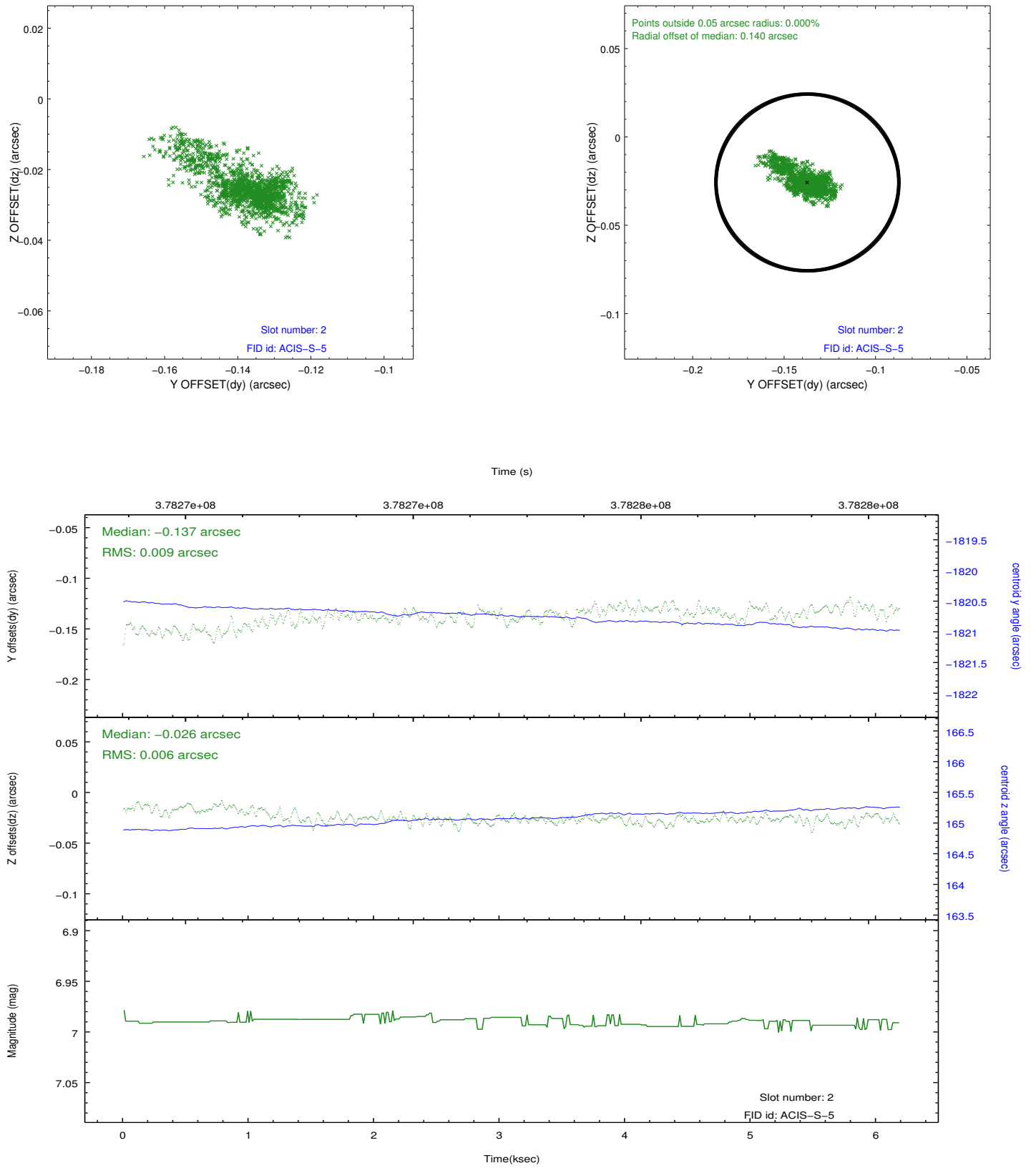
2.5.1 Slot 0



2.5.2 Slot 1



2.5.3 Slot 2



A Summary

A.1 Status

V&V Scientist	Beth Sundheim
V&V Date (YYYY-MM-DD)	2012.06.22
V&V Edition	1
V&V Disposition and Status	OK
V&V Charge Time	6.1814000475407

A.2 Comments