

# V&V Reference Report

## L2 ASCDS Version : 8.4.5

Observation 11682 - L2 Version 2  
Chandra X-Ray Center

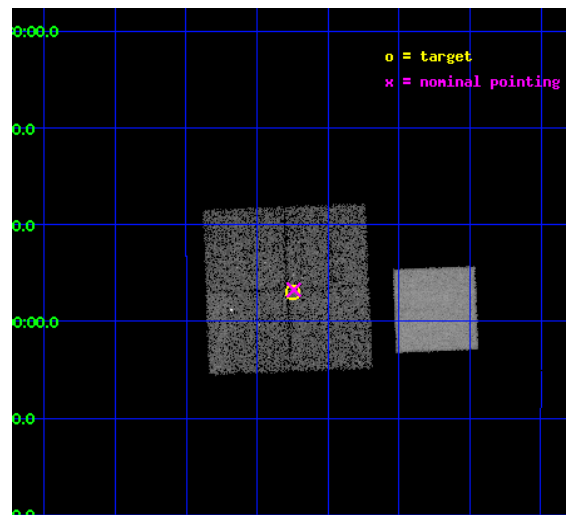
L2 Processing Date : Jun 13 2012

## Contents

<b>1</b>	<b>Front</b>	<b>2</b>
<b>2</b>	<b>OBI</b>	<b>3</b>
2.1	OBI . . . . .	3
2.1.1	Images . . . . .	3
2.1.2	Bias . . . . .	3
2.1.3	Parameters . . . . .	4
2.1.4	Events . . . . .	4
2.2	Compared Parameters . . . . .	5
2.3	Aspect . . . . .	6
2.4	Star Slots . . . . .	9
2.4.1	Slot 3 . . . . .	9
2.4.2	Slot 4 . . . . .	10
2.4.3	Slot 5 . . . . .	11
2.4.4	Slot 6 . . . . .	12
2.4.5	Slot 7 . . . . .	13
2.5	FID Slots . . . . .	14
2.5.1	Slot 0 . . . . .	14
2.5.2	Slot 1 . . . . .	15
2.5.3	Slot 2 . . . . .	16
<b>A</b>	<b>Summary</b>	<b>17</b>
A.1	Status . . . . .	17
A.2	Comments . . . . .	17

# 1 Front

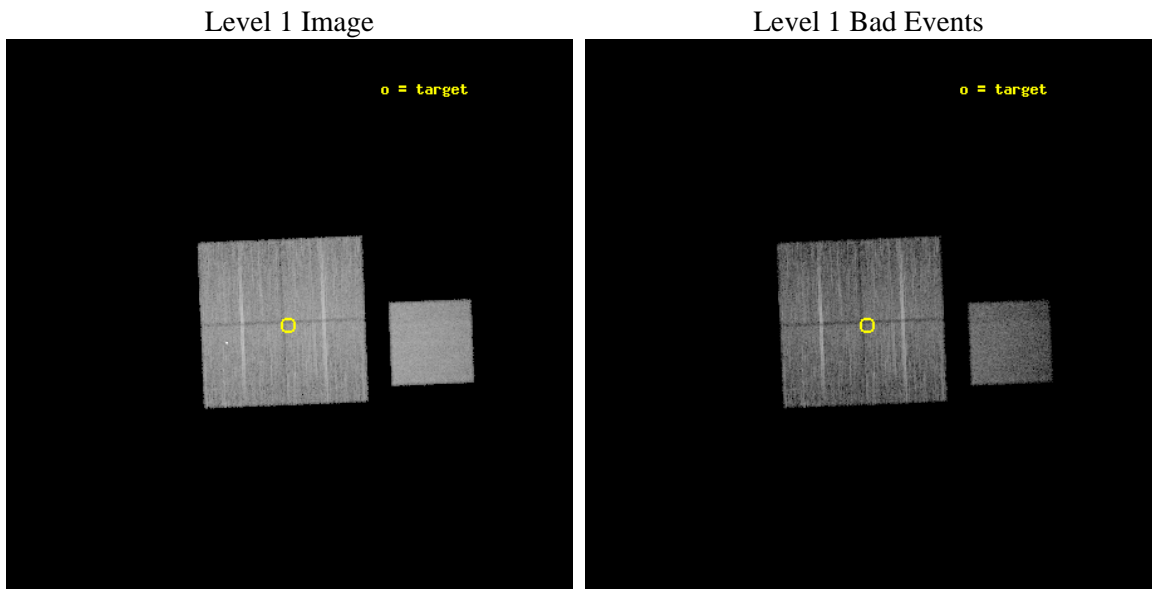
seq_num	702268	Sequence number
obs_id	11682	Observation id
title	Determining the Nature of the Faintest Hard X-ray Selected AGN with Chandra	Proposal title
observer	Mr. Shanil Virani	Principal investigator
object	IGR J01400-0757	Source name
dtcycle	0	&#160
cycle	P	events from which exps? Prim/Second/Both
ra_targ	25.0625	Observer's specified target RA [deg]
dec_targ	-7.950278	Observer's specified target Dec [deg]
ra_nom	25.060238592346	Nominal RA [deg]
dec_nom	-7.9458344924615	Nominal Dec [deg]
roll_nom	87.708357138388	Nominal Roll [deg]
revision	2	Processing version of data
ontime	10143.200078011	Sum of GTIs [s]
livetime	10010.671701676	Livetime [s]
ontime0	10143.200078011	Sum of GTIs [s]
ontime1	10143.200078011	Sum of GTIs [s]
ontime2	10143.200078011	Sum of GTIs [s]
ontime3	10143.200078011	Sum of GTIs [s]
ontime7	10143.200078011	Sum of GTIs [s]
l2events	74693	Number of level 2 events



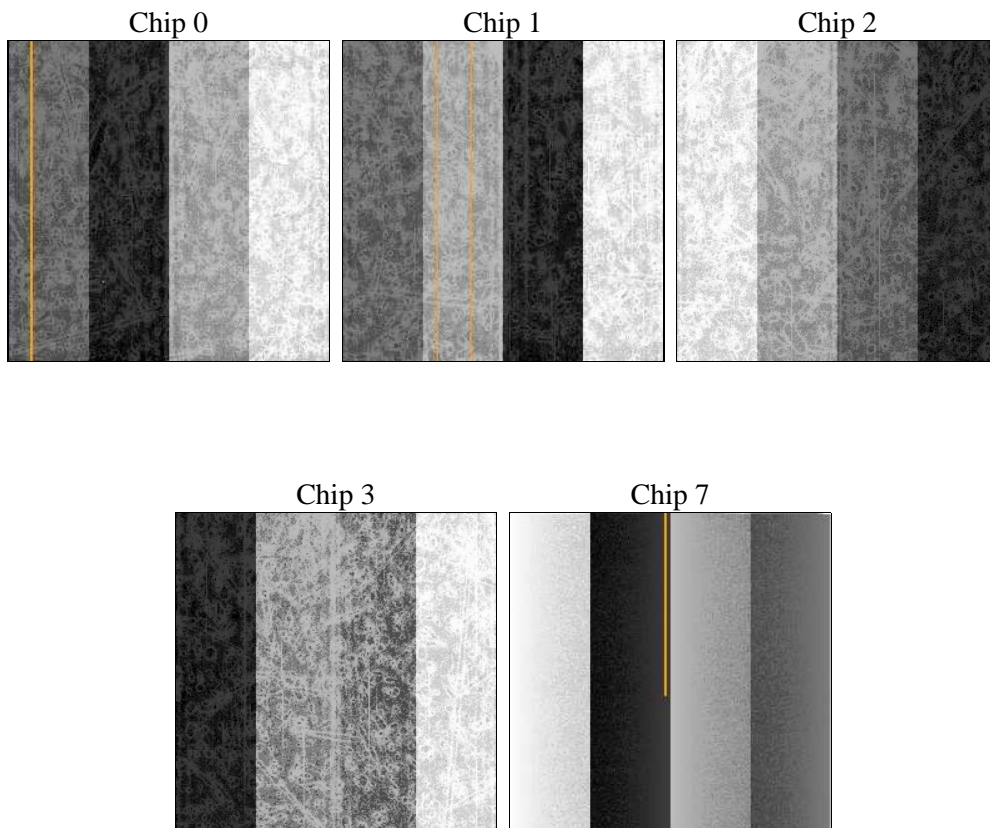
## 2 OBI

### 2.1 OBI

#### 2.1.1 Images



#### 2.1.2 Bias



### 2.1.3 Parameters

obi_num	0	Obi number	sched_exp_time	10000.414000	[s] Scheduled observation exposure time
ascdsver	8.4.5	Processing system revision	ontime	10143.200078011	Sum of GTIs [s]
caldsver	4.4.10	&#160	ontime0	10143.200078011	Sum of GTIs [s]
date	2012-06-13T02:50:11	Date and time of file creation	ontime1	10143.200078011	Sum of GTIs [s]
revision	2	Processing version of data	ontime2	10143.200078011	Sum of GTIs [s]
			ontime3	10143.200078011	Sum of GTIs [s]
			ontime7	10143.200078011	Sum of GTIs [s]
			l1events	501358	Number of level 1 events

### 2.1.4 Events

	ccd 0	ccd 1	ccd 2	ccd 3	ccd 7
level 1 events	92660	96725	100170	98538	113265
rejected events	83846	85355	91223	90264	68039
rejected %	90%	88%	91%	91%	60%

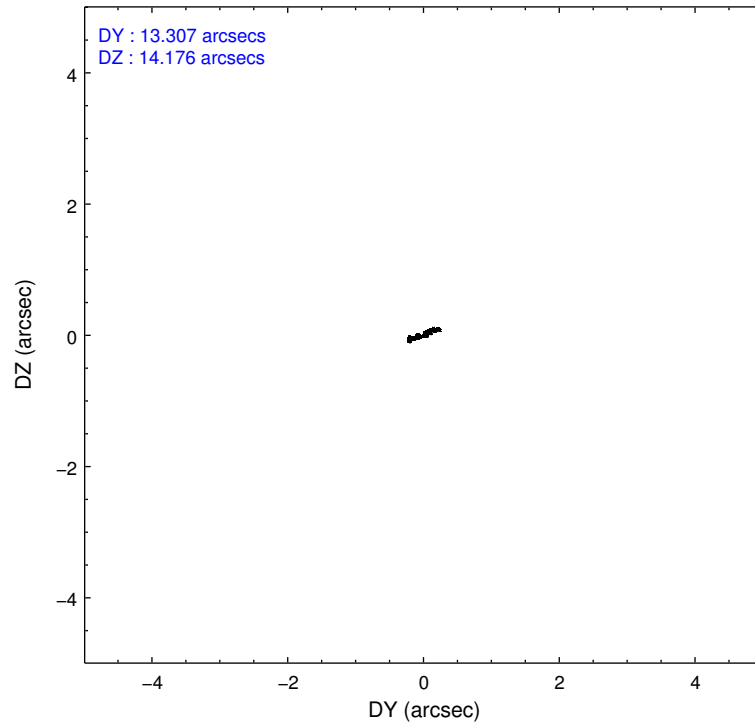
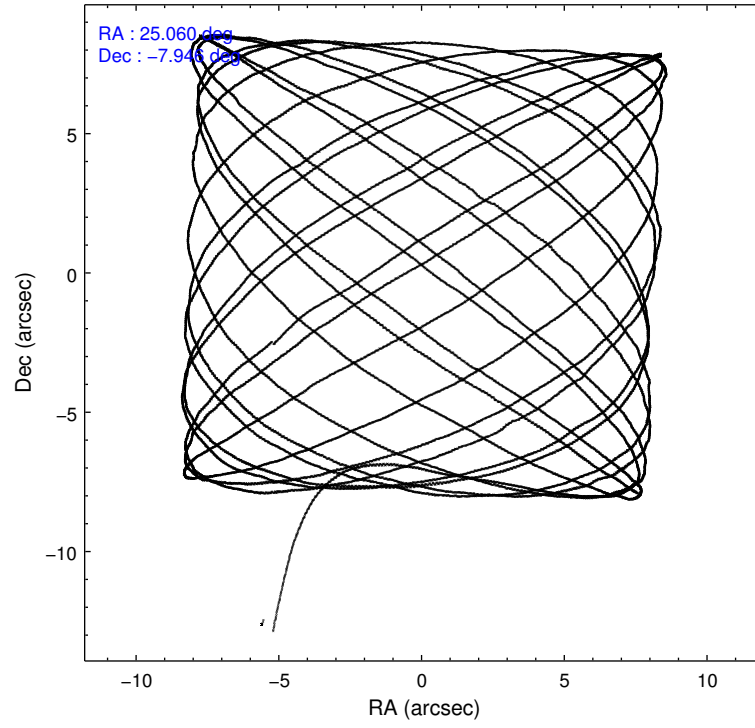
	ccd 0	ccd 1	ccd 2	ccd 3	ccd 7
grade 0 events	3494	5335	3662	3328	4639
	3%	5%	3%	3%	4%
grade 1 events	68	78	58	58	152
	0%	0%	0%	0%	0%
grade 2 events	2544	2719	2430	2096	10691
	2%	2%	2%	2%	9%
grade 3 events	1136	1274	1063	1031	4601
	1%	1%	1%	1%	4%
grade 4 events	1036	1148	1154	1051	4645
	1%	1%	1%	1%	4%
grade 5 events	3509	3923	3310	4223	11962
	3%	4%	3%	4%	10%
grade 6 events	1990	2369	1913	1961	27203
	2%	2%	1%	1%	24%
grade 7 events	78883	79879	86580	84790	49372
	85%	82%	86%	86%	43%

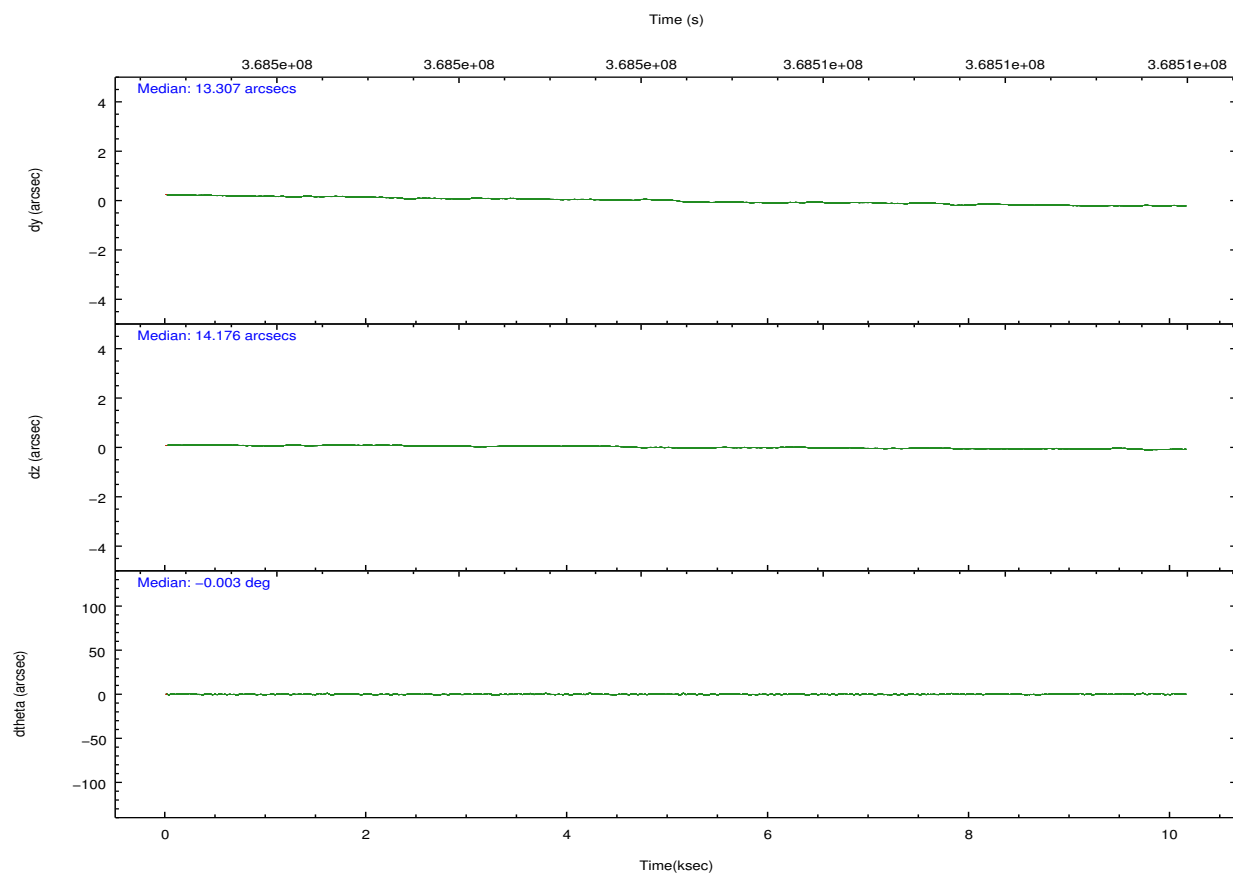
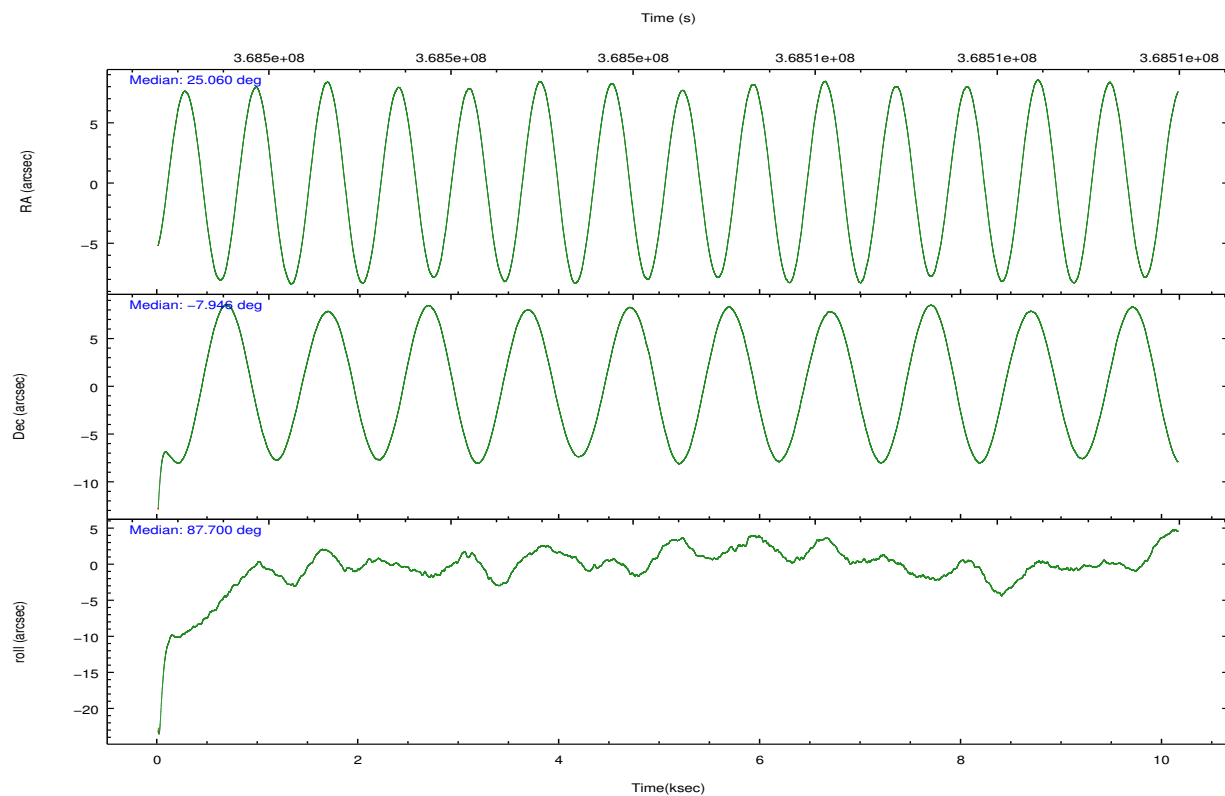


## 2.2 Compared Parameters

Parameter	Planned	Actual	Parameter	Planned	Actual
Instrument	ACIS	ACIS	Obspar format version number	7	7
Detector	ACIS-01237	ACIS-01237	Obspar file type	PREDICTED	ACTUAL
Grating	NONE	NONE	Obspar update status	NONE	UPDATED
Data mode	FAINT	FAINT	Number of optional ACIS chips dropped	0	0
Observation mode	POINTING	POINTING	On-chip summing requested	N	N
[deg] Pointing RA	25.073249	25.06023859234608	Subarray requested	NONE	NONE
[deg] Pointing Dec	-7.970092	-7.945834492461456	Alternating exposures requested	N	N
[deg] Pointing Roll	87.501488	87.70835713838771	[s] Primary exposure time	0.000000	3.1
[mm] SIM focus pos	-0.782348	-0.7809083437167272			
[mm] SIM defocus	0	0.001439871863259334			
[mm] SIM translation stage pos	-233.592463	-233.5874344608287			
[mm] SIM translation stage offset	0	-0.005018542100998502			
[s] Observation start time (MET)	368499458.184000	368497728.46075			
Observation start date	2009-09-05T00:56:32	2009-09-05T00:28:48			
[s] Observation end time (MET)	368509459.184000	368509691.23635			
Observation end date	2009-09-05T03:43:13	2009-09-05T03:48:11			
Read mode	TIMED	TIMED			

## 2.3 Aspect



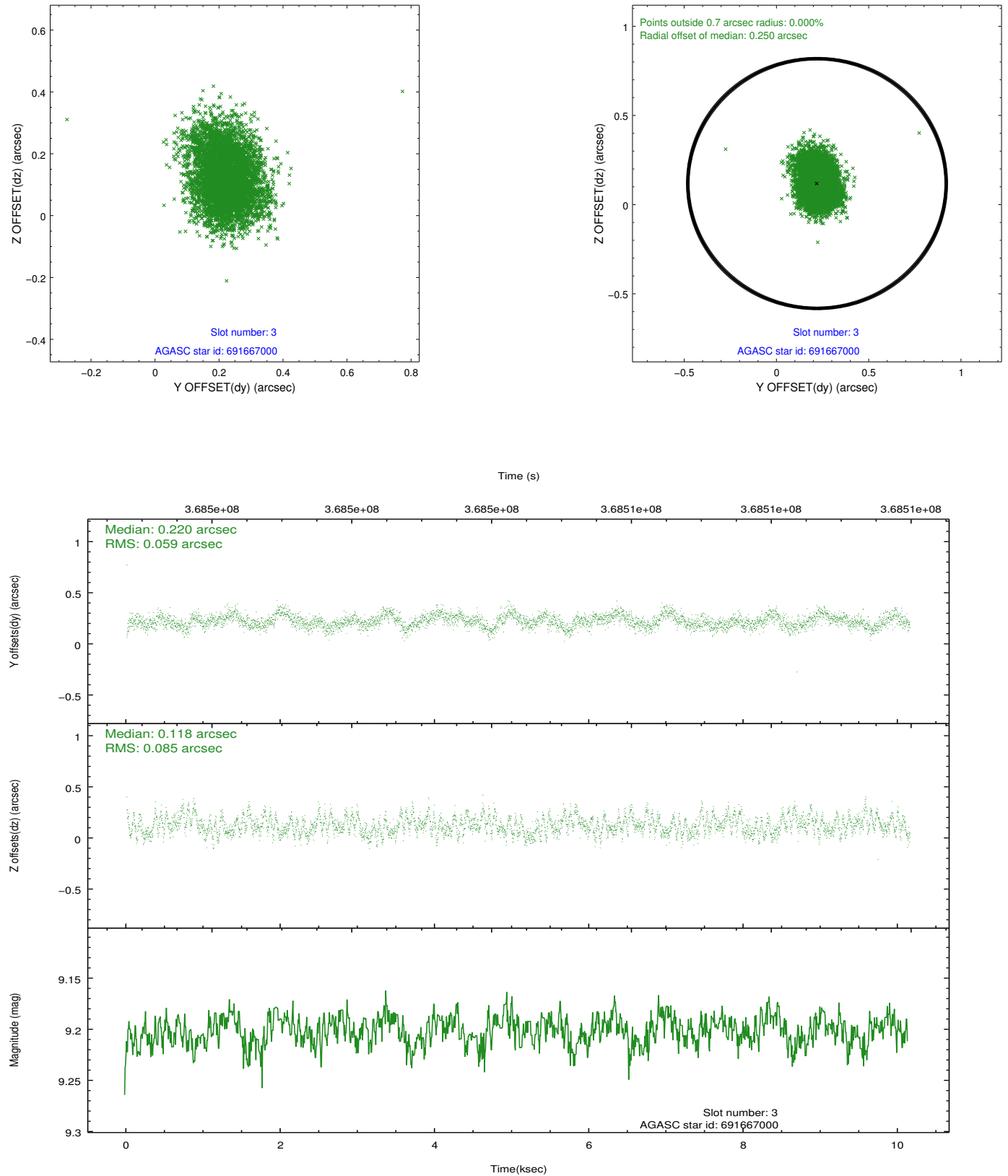


### Slot Statistics

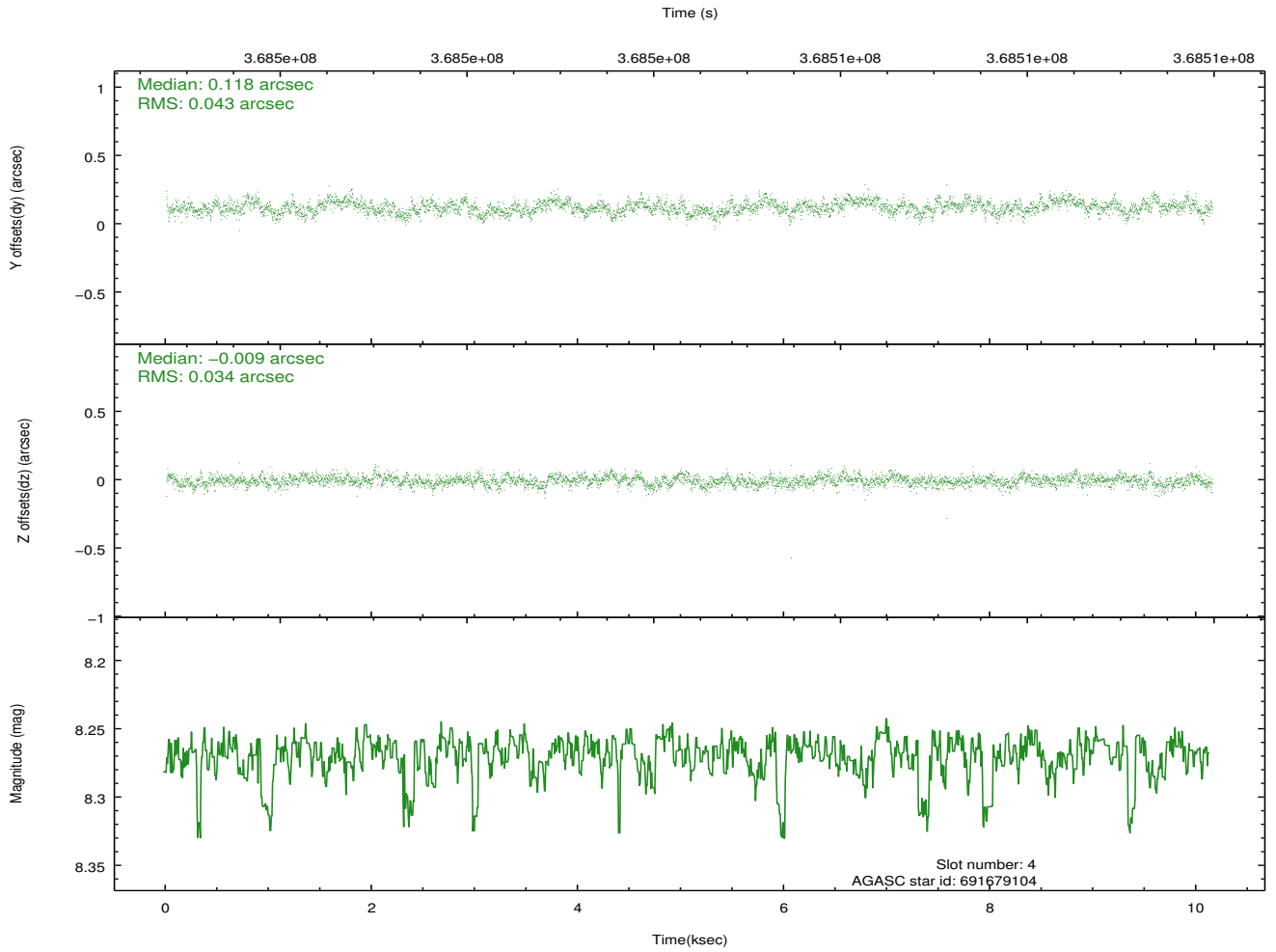
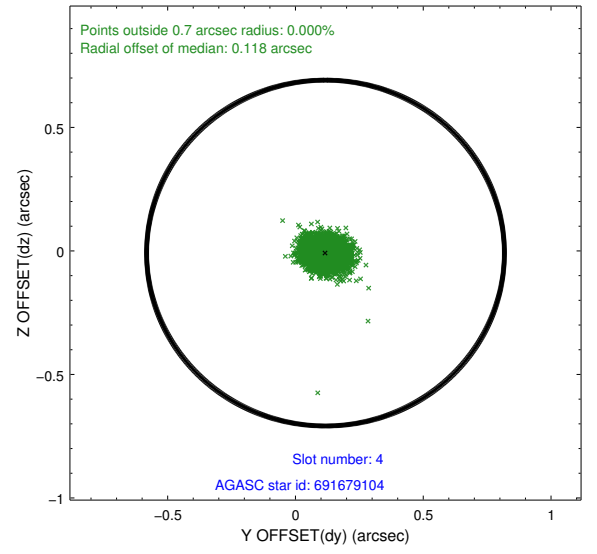
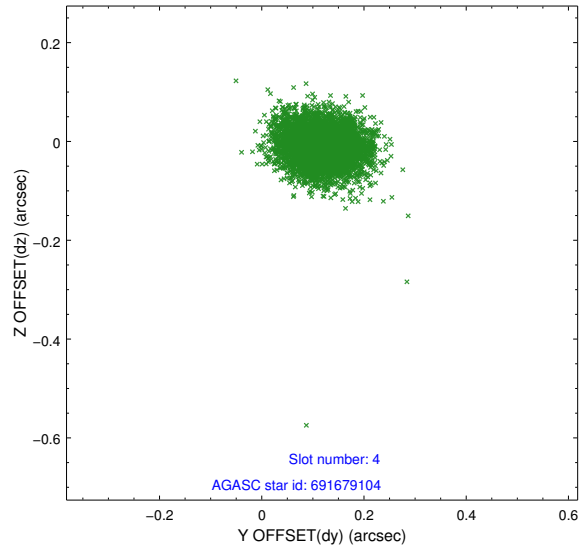
slot	status	id	mag	n_pts	med_dy	med_dz	dr1	dr2	ra	dec	mean_y	mean_z
0	FID	ACIS-I-1	7.08	2476	0.038	0.006	0.008	0.015	0.000000	0.000000	926.27	-837.74
1	FID	ACIS-I-5	7.07	2476	-0.220	0.044	0.008	0.013	0.000000	0.000000	-1821.85	1059.47
2	FID	ACIS-I-6	7.07	2475	0.091	0.020	0.008	0.012	0.000000	0.000000	391.25	1704.58
3	GUIDE	691667000	9.20	4945	0.220	0.118	0.109	0.178	25.626920	-8.125452	-473.33	-1995.64
4	GUIDE	691679104	8.27	4952	0.118	-0.009	0.058	0.095	24.652540	-8.509478	-2005.90	1411.32
5	GUIDE	691679760	9.51	4930	-0.148	0.312	0.129	0.208	25.713876	-7.865659	472.61	-2265.43
6	GUIDE	691681664	9.44	4948	-0.155	-0.161	0.104	0.163	24.713967	-7.723675	829.92	1318.81
7	GUIDE	691681640	9.15	4944	-0.036	-0.254	0.101	0.161	24.414941	-7.726736	770.86	2383.92

## 2.4 Star Slots

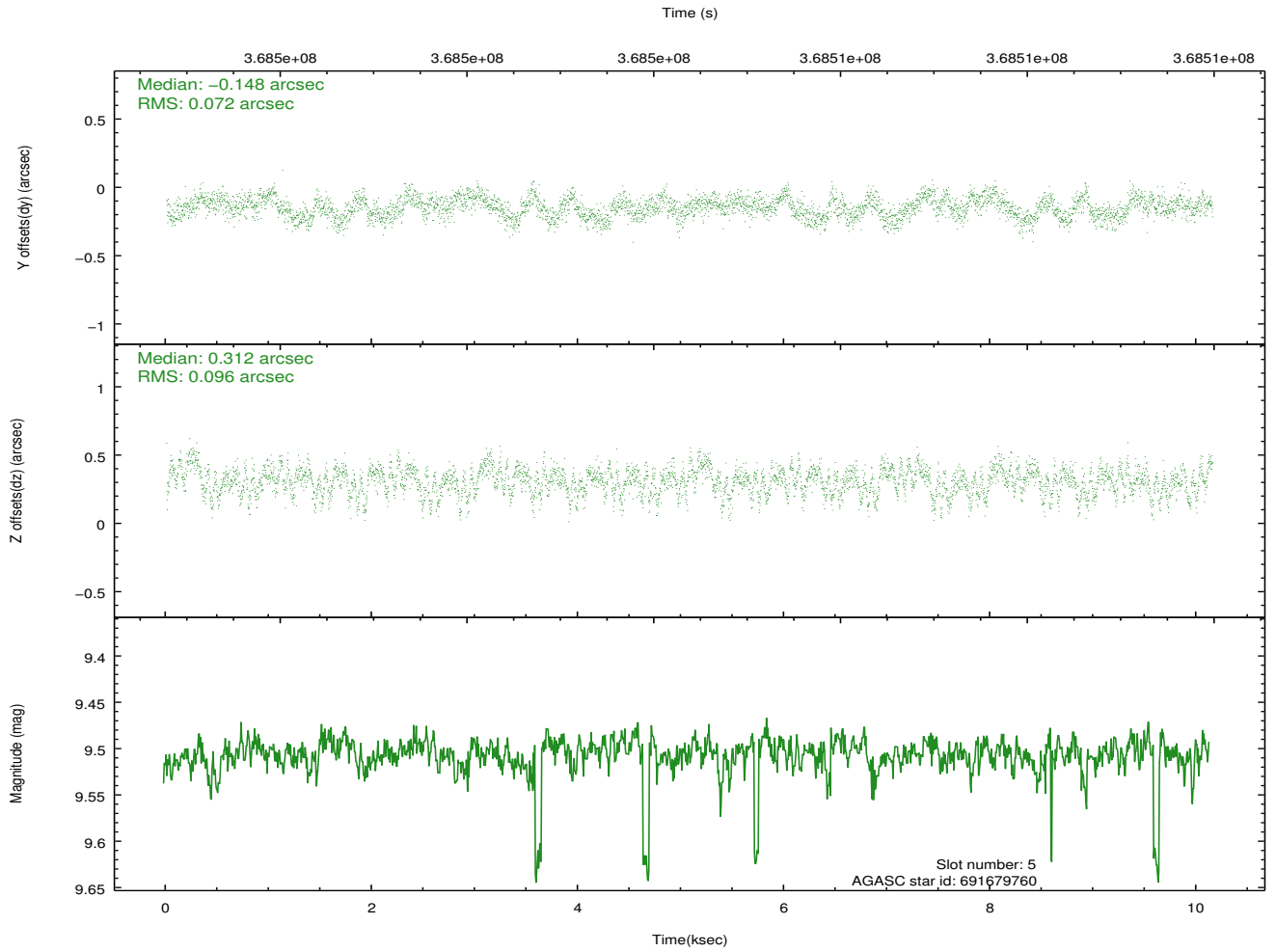
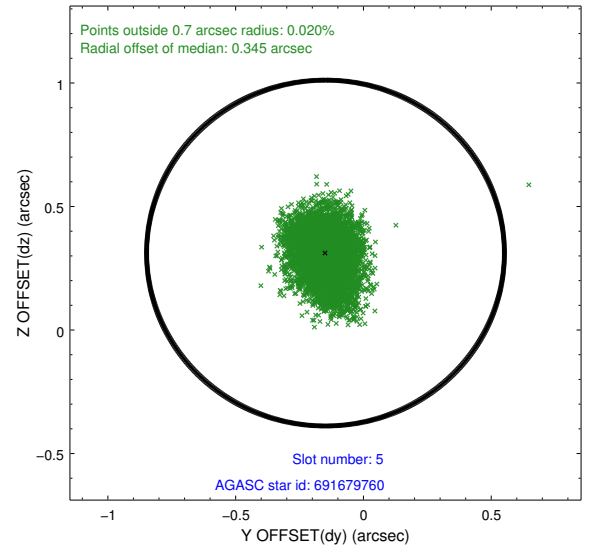
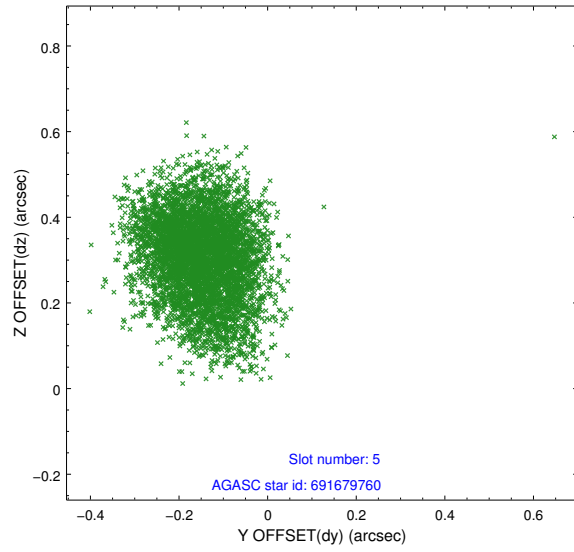
### 2.4.1 Slot 3



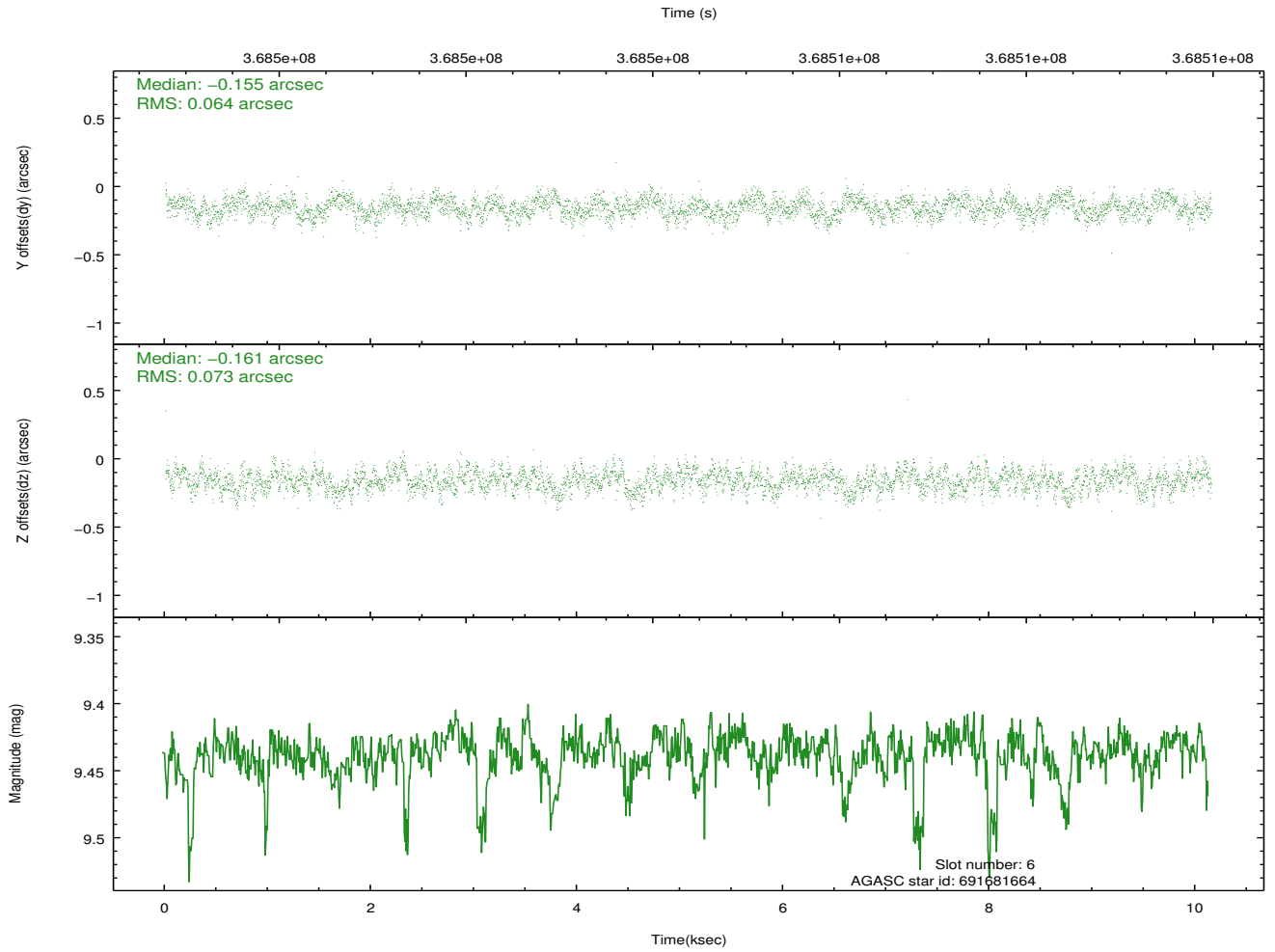
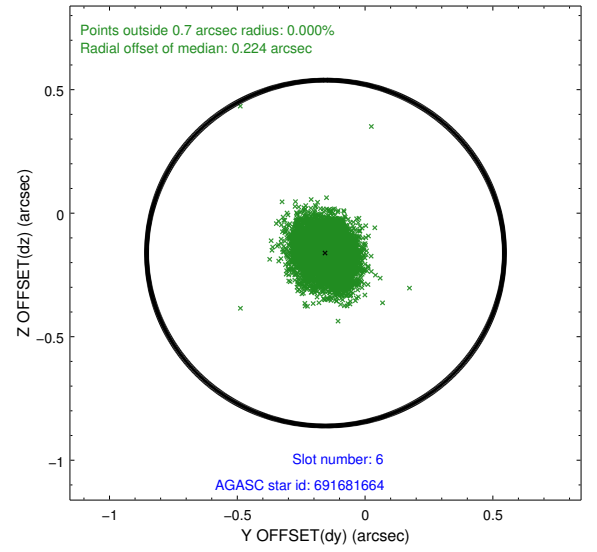
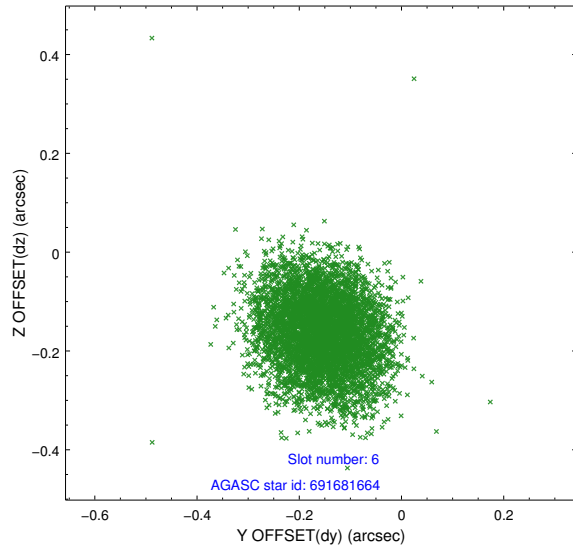
## 2.4.2 Slot 4



### 2.4.3 Slot 5

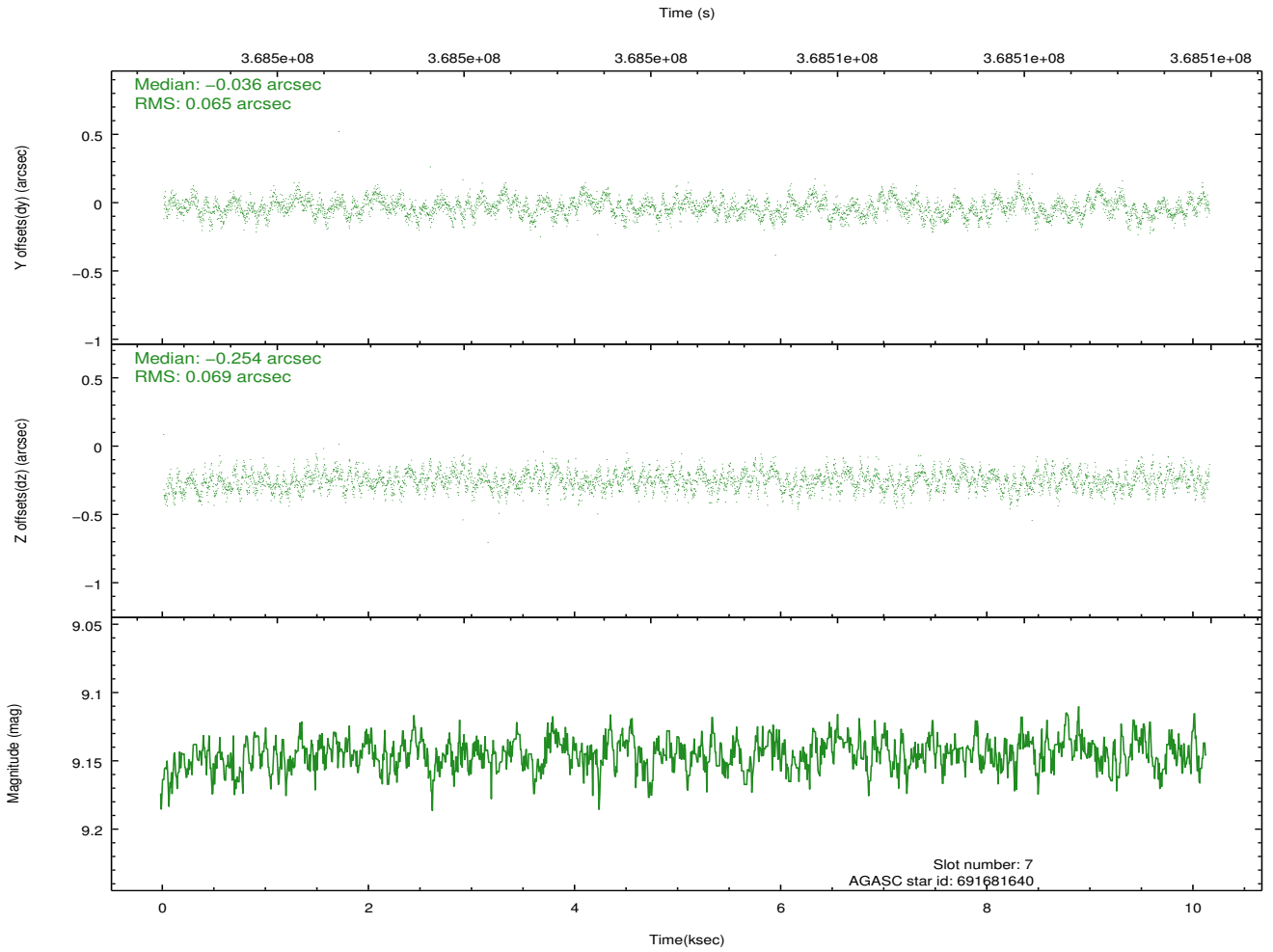
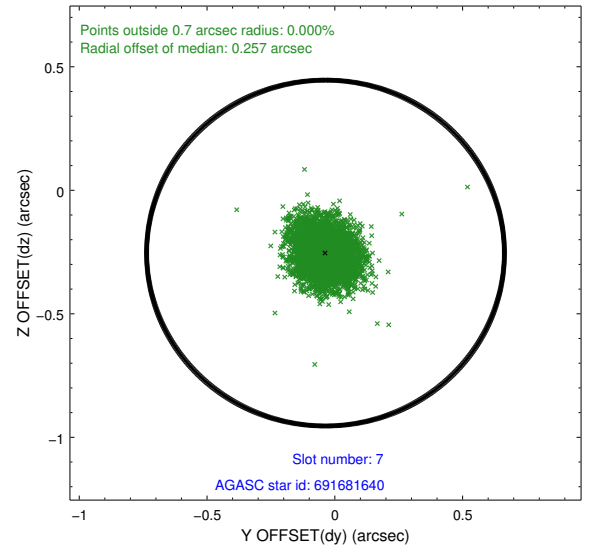
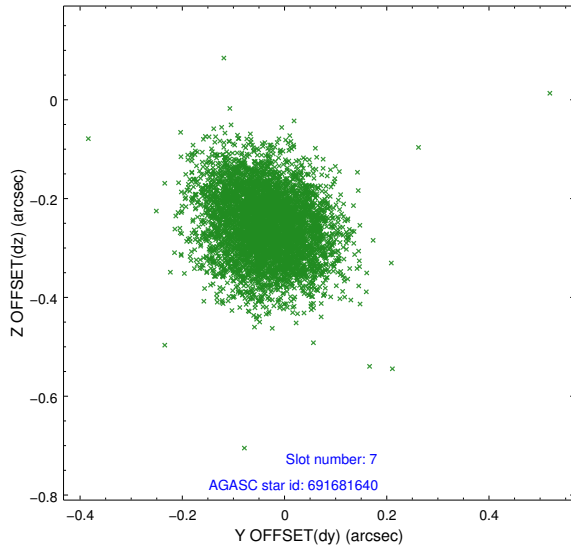


## 2.4.4 Slot 6

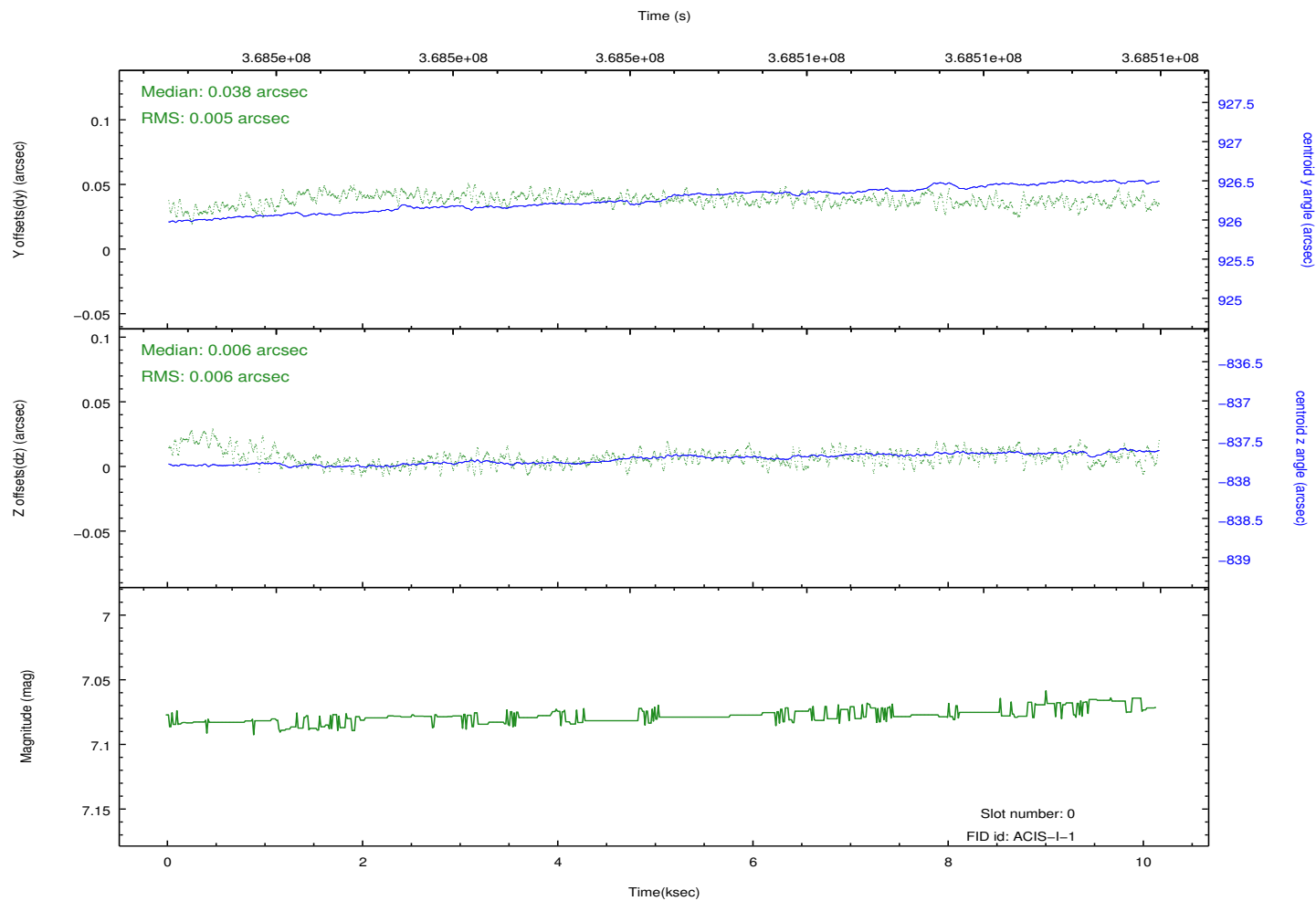
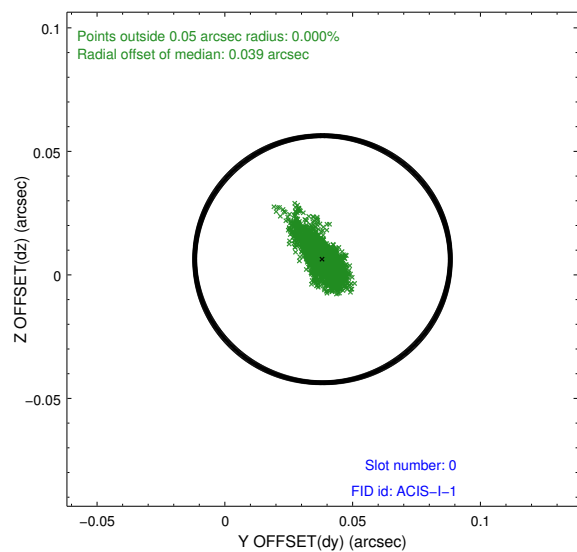
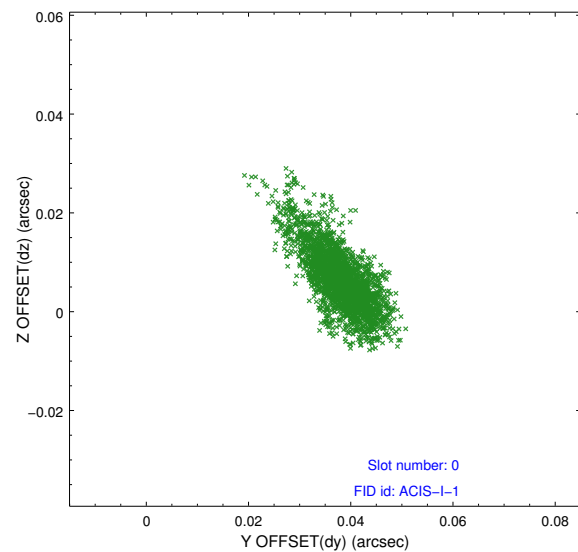




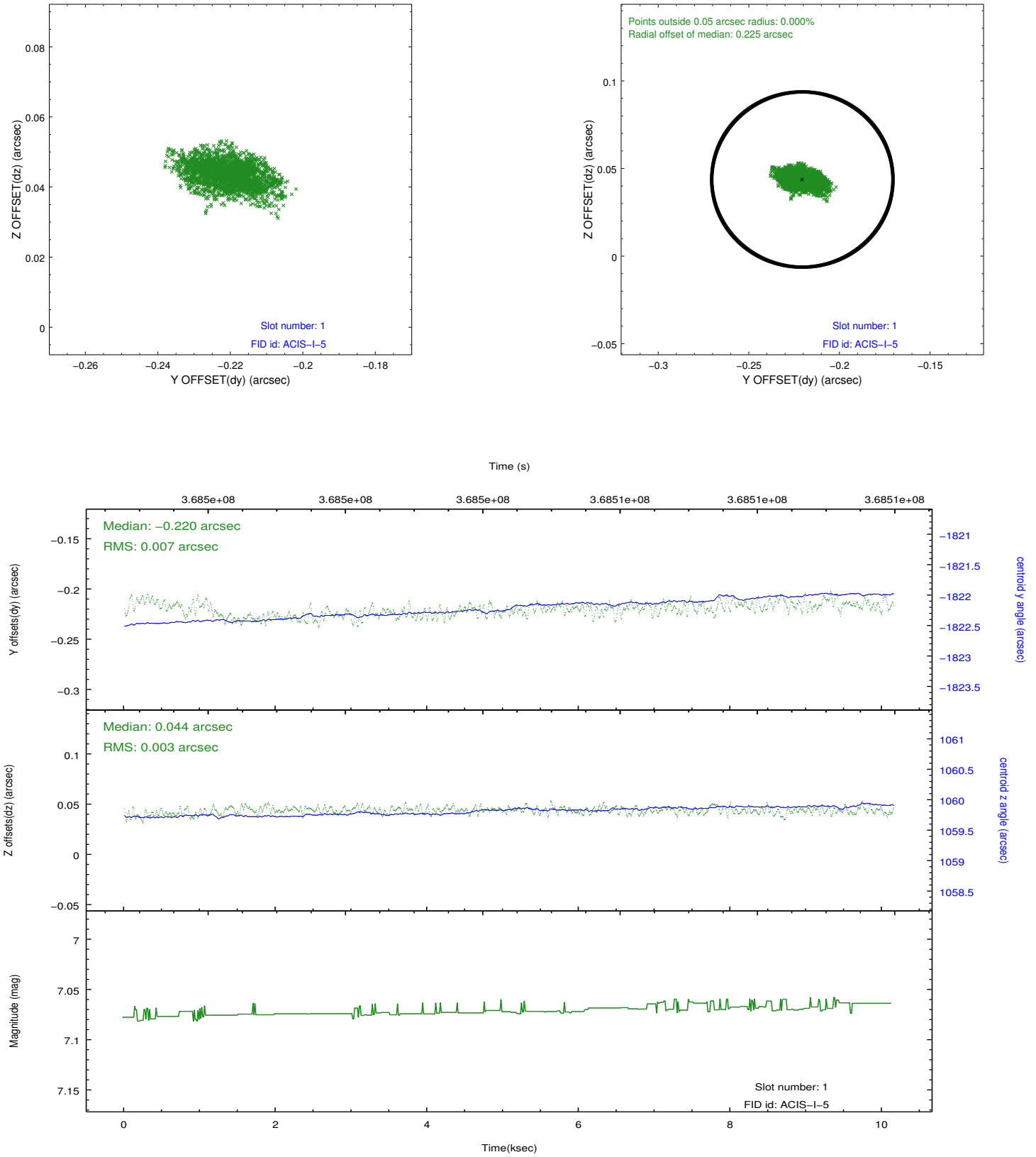
## 2.4.5 Slot 7



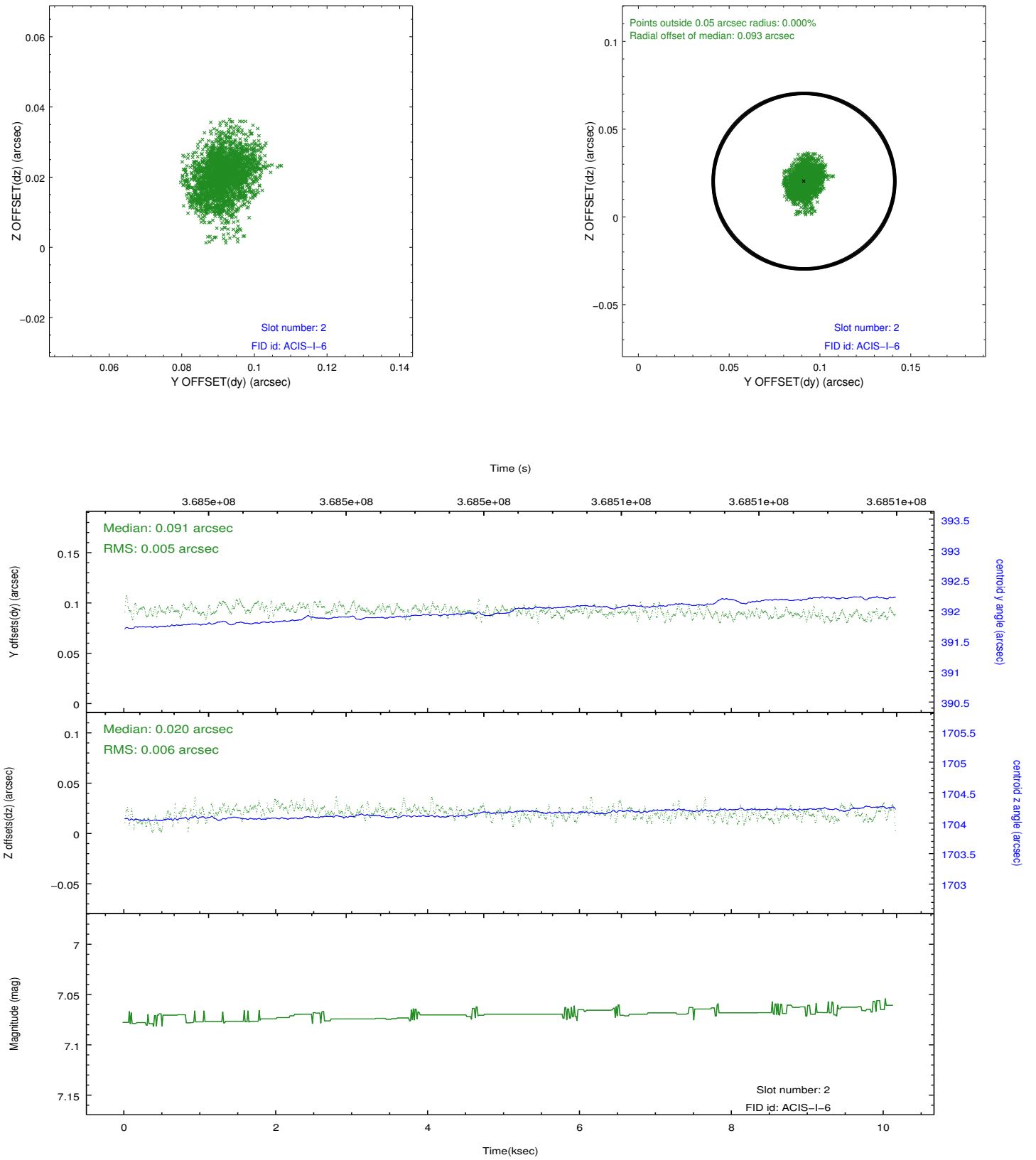
### 2.5.1 Slot 0



## 2.5.2 Slot 1



### 2.5.3 Slot 2



## A Summary

### A.1 Status

V&V Scientist	Jen Lauer
V&V Date (YYYY-MM-DD)	2012.06.15
V&V Edition	1
V&V Disposition and Status	OK
V&V Charge Time	10.143200078011

### A.2 Comments