

# V&V Reference Report

## L2 ASCDS Version : 8.4.5

Observation 11658 - L2 Version 2  
Chandra X-Ray Center

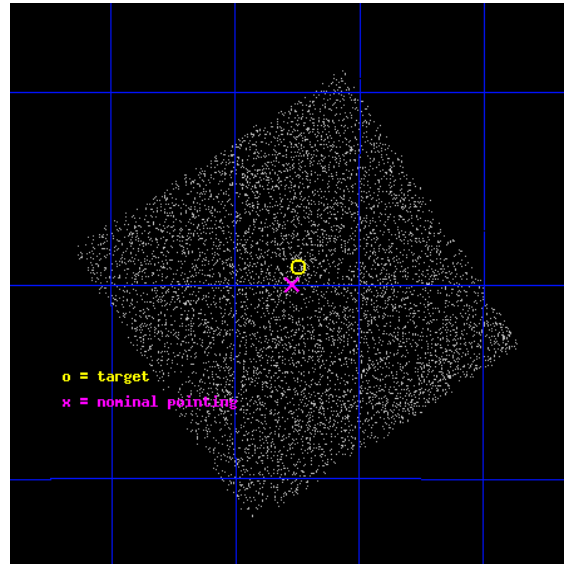
L2 Processing Date : Jun 13 2012

## Contents

<b>1</b>	<b>Front</b>	<b>2</b>
<b>2</b>	<b>OBI</b>	<b>3</b>
2.1	OBI . . . . .	3
2.1.1	Images . . . . .	3
2.1.2	Bias . . . . .	3
2.1.3	Parameters . . . . .	4
2.1.4	Events . . . . .	4
2.2	Compared Parameters . . . . .	5
2.3	Aspect . . . . .	6
2.4	Star Slots . . . . .	9
2.4.1	Slot 3 . . . . .	9
2.4.2	Slot 4 . . . . .	10
2.4.3	Slot 5 . . . . .	11
2.4.4	Slot 6 . . . . .	12
2.4.5	Slot 7 . . . . .	13
2.5	FID Slots . . . . .	14
2.5.1	Slot 0 . . . . .	14
2.5.2	Slot 1 . . . . .	15
2.5.3	Slot 2 . . . . .	16
<b>A</b>	<b>Summary</b>	<b>17</b>
A.1	Status . . . . .	17
A.2	Comments . . . . .	17

# 1 Front

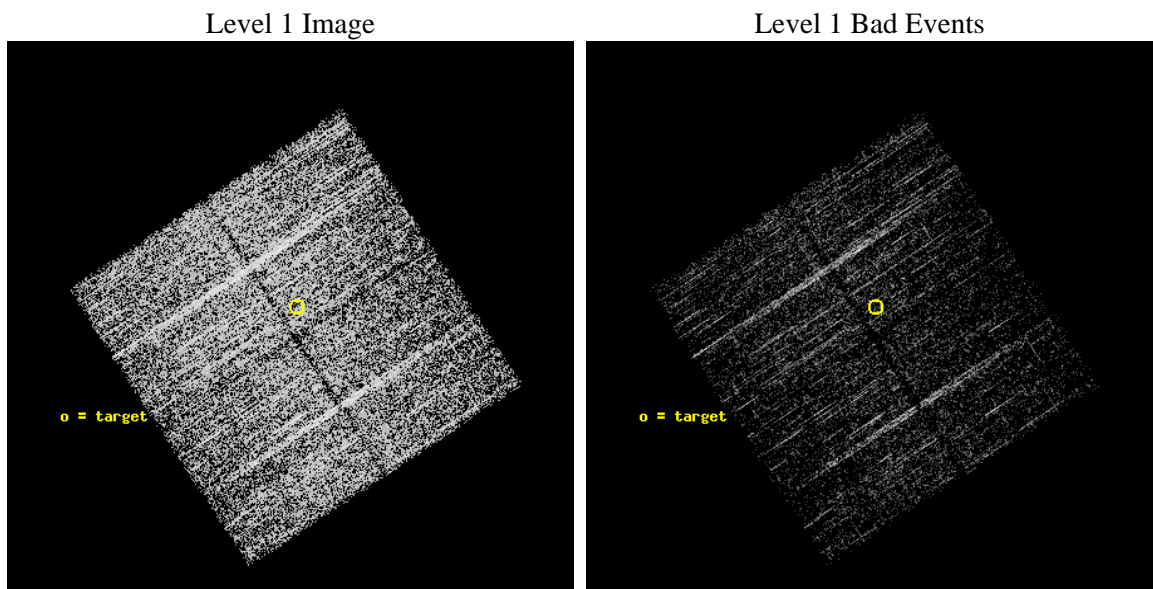
seq_num	702244	Sequence number
obs_id	11658	Observation id
title	AGN ignition in the galaxy group environment	Proposal title
observer	Dr. John Silverman	Principal investigator
object	2PIGG_1671	Source name
dtcycle	0	&#160
cycle	P	events from which exps? Prim/Second/Both
ra_targ	335.937083	Observer's specified target RA [deg]
dec_targ	-29.984111	Observer's specified target Dec [deg]
ra_nom	335.94315210446	Nominal RA [deg]
dec_nom	-29.999589119945	Nominal Dec [deg]
roll_nom	326.70699393026	Nominal Roll [deg]
revision	2	Processing version of data
ontime	2675.3000205755	Sum of GTIs [s]
livetime	2640.3452562795	Livetime [s]
ontime0	2675.3000205755	Sum of GTIs [s]
ontime1	2672.1590602398	Sum of GTIs [s]
ontime2	2675.3000205755	Sum of GTIs [s]
ontime3	2675.3000205755	Sum of GTIs [s]
l2events	7910	Number of level 2 events



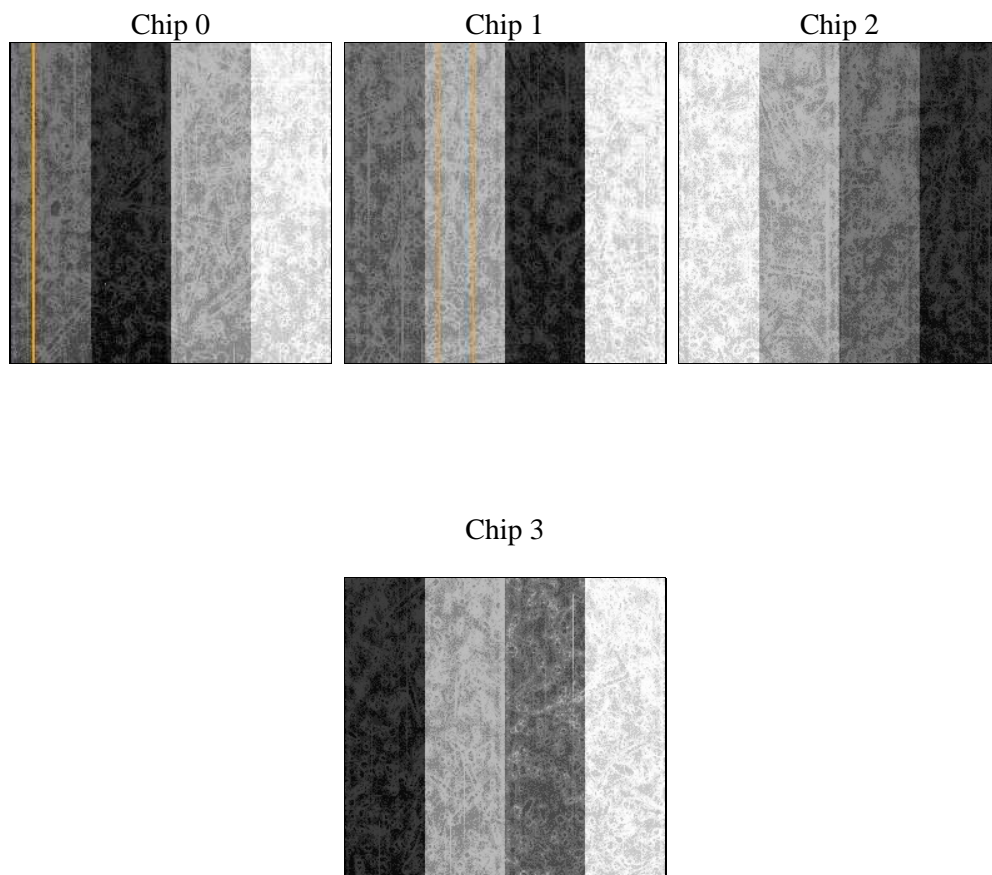
## 2 OBI

### 2.1 OBI

#### 2.1.1 Images



#### 2.1.2 Bias



### 2.1.3 Parameters

obi_num	0	Obi number	sched_exp_time	2500.000000	[s] Scheduled observation exposure time
ascdsver	8.4.5	Processing system revision	ontime	2675.3000205755	Sum of GTIs [s]
caldsver	4.4.10	&#160	ontime0	2675.3000205755	Sum of GTIs [s]
date	2012-06-13T04:15:50	Date and time of file creation	ontime1	2672.1590602398	Sum of GTIs [s]
revision	2	Processing version of data	ontime2	2675.3000205755	Sum of GTIs [s]
			ontime3	2675.3000205755	Sum of GTIs [s]
			l1events	108461	Number of level 1 events

### 2.1.4 Events

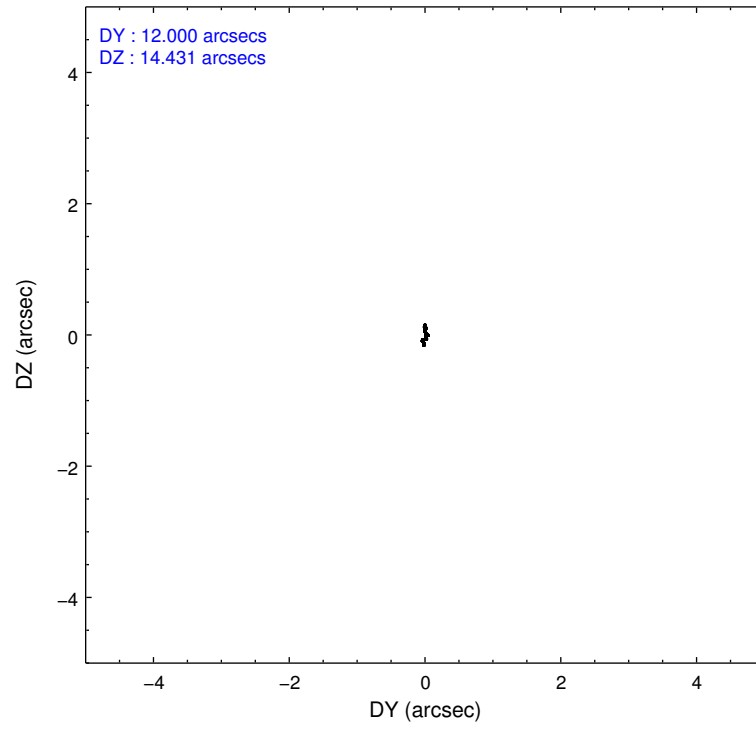
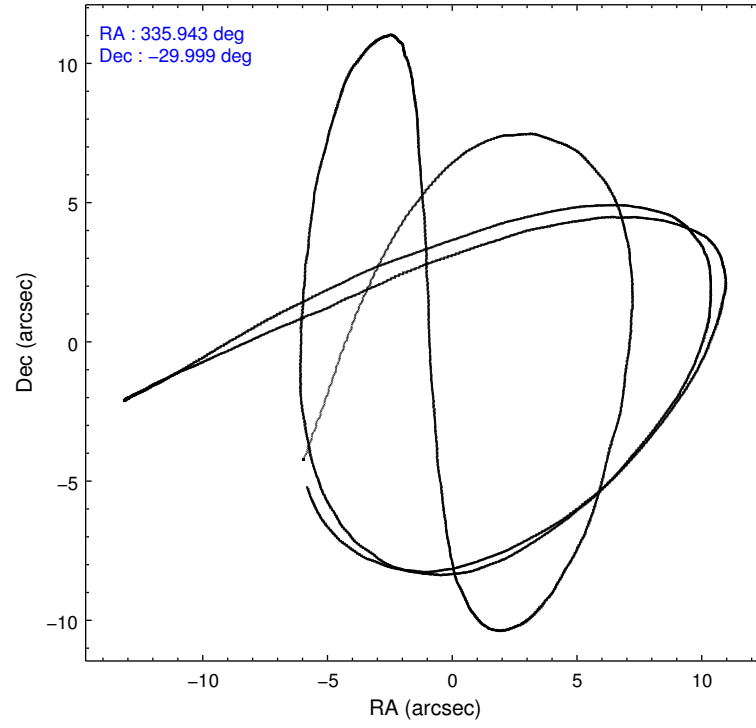
	ccd 0	ccd 1	ccd 2	ccd 3
level 1 events	26588	23867	29722	28284
rejected events	24237	21227	27356	26033
rejected %	91%	88%	92%	92%

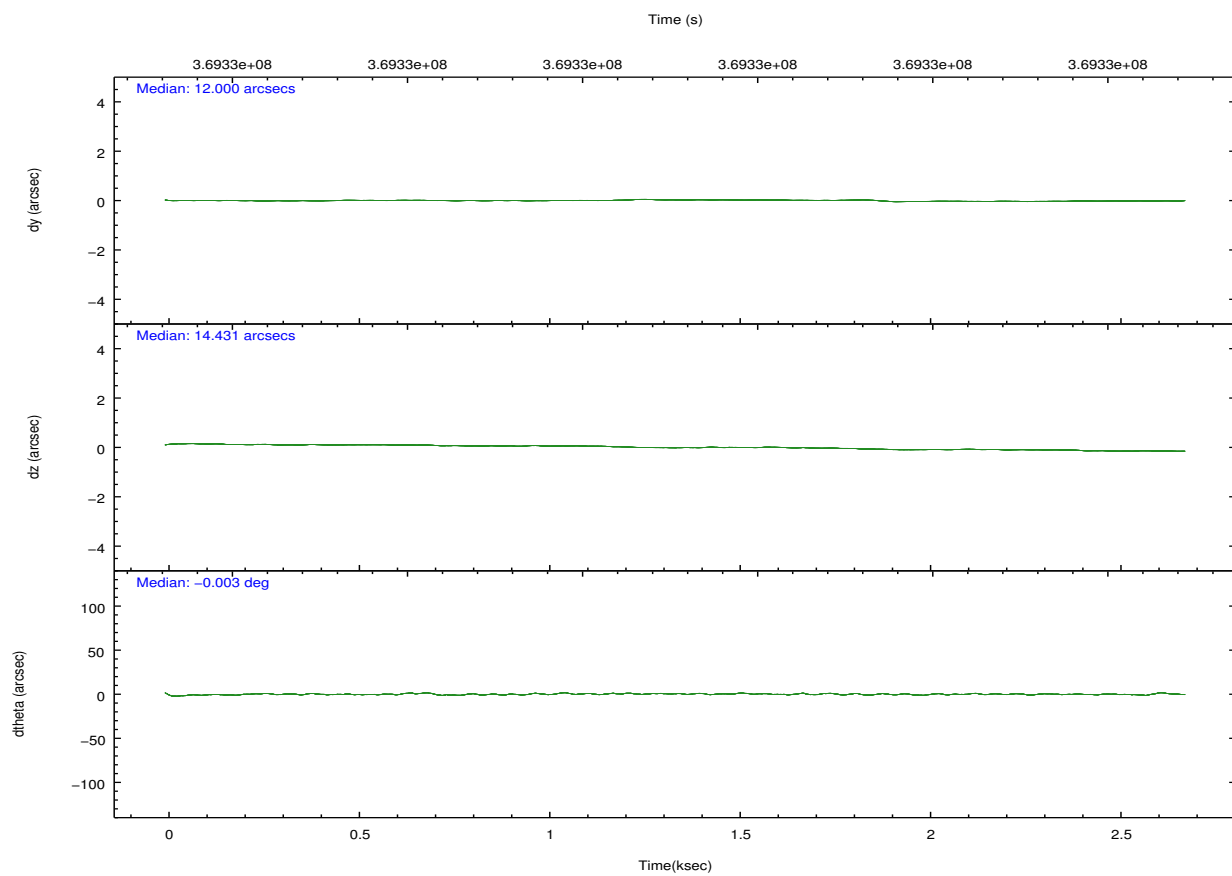
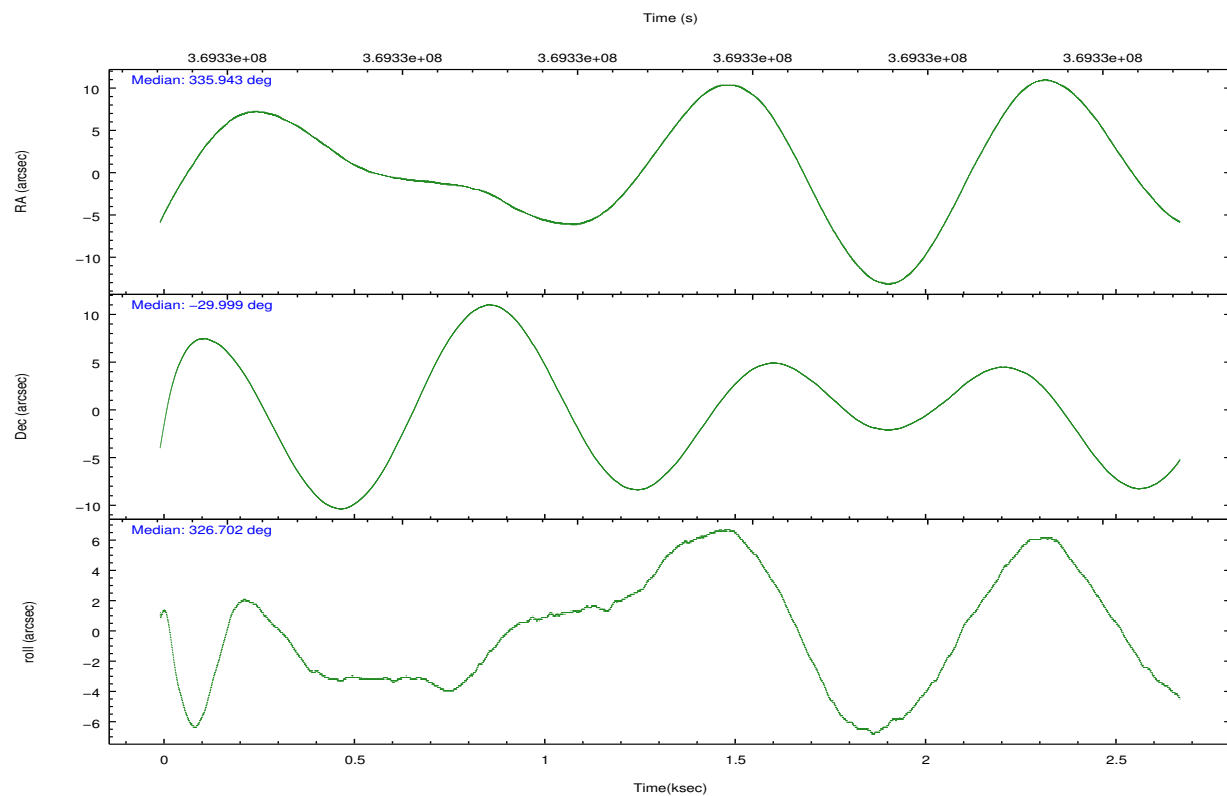
	ccd 0	ccd 1	ccd 2	ccd 3
grade 0 events	958	1254	1057	990
	3%	5%	3%	3%
grade 1 events	13	15	11	12
	0%	0%	0%	0%
grade 2 events	706	725	660	561
	2%	3%	2%	1%
grade 3 events	306	321	279	317
	1%	1%	0%	1%
grade 4 events	292	321	318	294
	1%	1%	1%	1%
grade 5 events	981	1054	895	1165
	3%	4%	3%	4%
grade 6 events	608	625	536	573
	2%	2%	1%	2%
grade 7 events	22724	19552	25966	24372
	85%	81%	87%	86%

## 2.2 Compared Parameters

Parameter	Planned	Actual	Parameter	Planned	Actual
Instrument	ACIS	ACIS	Obspar format version number	7	7
Detector	ACIS-0123	ACIS-0123	Obspar file type	PREDICTED	ACTUAL
Grating	NONE	NONE	Obspar update status	NONE	UPDATED
Data mode	VFAINT	VFAINT	Number of optional ACIS chips dropped	0	0
Observation mode	POINTING	POINTING	On-chip summing requested	N	N
[deg] Pointing RA	335.911201	335.9431521044622	Subarray requested	NONE	NONE
[deg] Pointing Dec	-29.998055	-29.99958911994507	Alternating exposures requested	N	N
[deg] Pointing Roll	326.482257	326.7069939302598	[s] Primary exposure time	0.000000	3.1
[mm] SIM focus pos	-0.782348	-0.7809083437167272			
[mm] SIM defocus	0	0.001439871863259334			
[mm] SIM translation stage pos	-233.592463	-233.5874344608287			
[mm] SIM translation stage offset	0	-0.005018542100998502			
[s] Observation start time (MET)	369332104.184000	369330878.74005			
Observation start date	2009-09-14T16:13:58	2009-09-14T15:54:38			
[s] Observation end time (MET)	369334604.184000	369335653.19029			
Observation end date	2009-09-14T16:55:38	2009-09-14T17:14:13			
Read mode	TIMED	TIMED			

## 2.3 Aspect





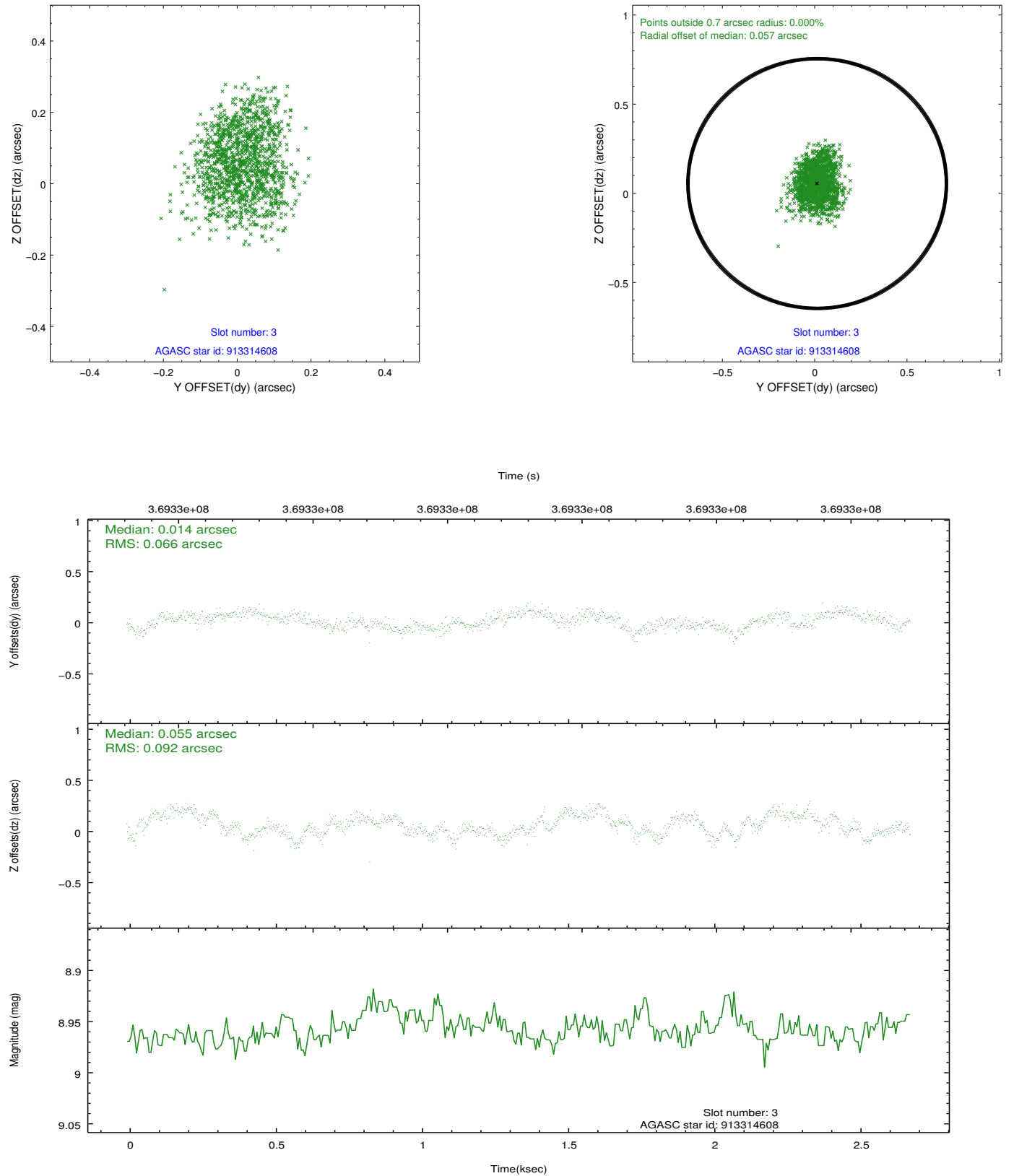
### Slot Statistics

slot	status	id	mag	n_pts	med_dy	med_dz	dr1	dr2	ra	dec	mean_y	mean_z
0	FID	ACIS-I-2	6.87	654	-0.069	-0.072	0.009	0.016	0.000000	0.000000	-766.69	-844.46
1	FID	ACIS-I-4	6.90	654	0.152	0.064	0.007	0.014	0.000000	0.000000	2146.47	1060.66
2	FID	ACIS-I-5	6.95	654	-0.184	0.077	0.009	0.015	0.000000	0.000000	-1817.56	1061.22
3	GUIDE	913314608	8.96	1304	0.014	0.055	0.123	0.189	335.885858	-29.694278	-670.33	867.56
4	GUIDE	913319984	9.45	1307	-0.096	-0.191	0.093	0.146	336.672474	-29.705461	1406.15	2186.50
5	GUIDE	982520928	9.65	1307	-0.100	0.017	0.129	0.202	335.110519	-30.251487	-1566.79	-2141.87
6	GUIDE	982523760	9.39	1294	-0.064	0.115	0.132	0.201	335.695882	-30.565092	569.62	-2072.65
7	GUIDE	982648720	9.73	1306	0.244	0.018	0.138	0.220	336.252192	-30.720827	2318.68	-1589.55

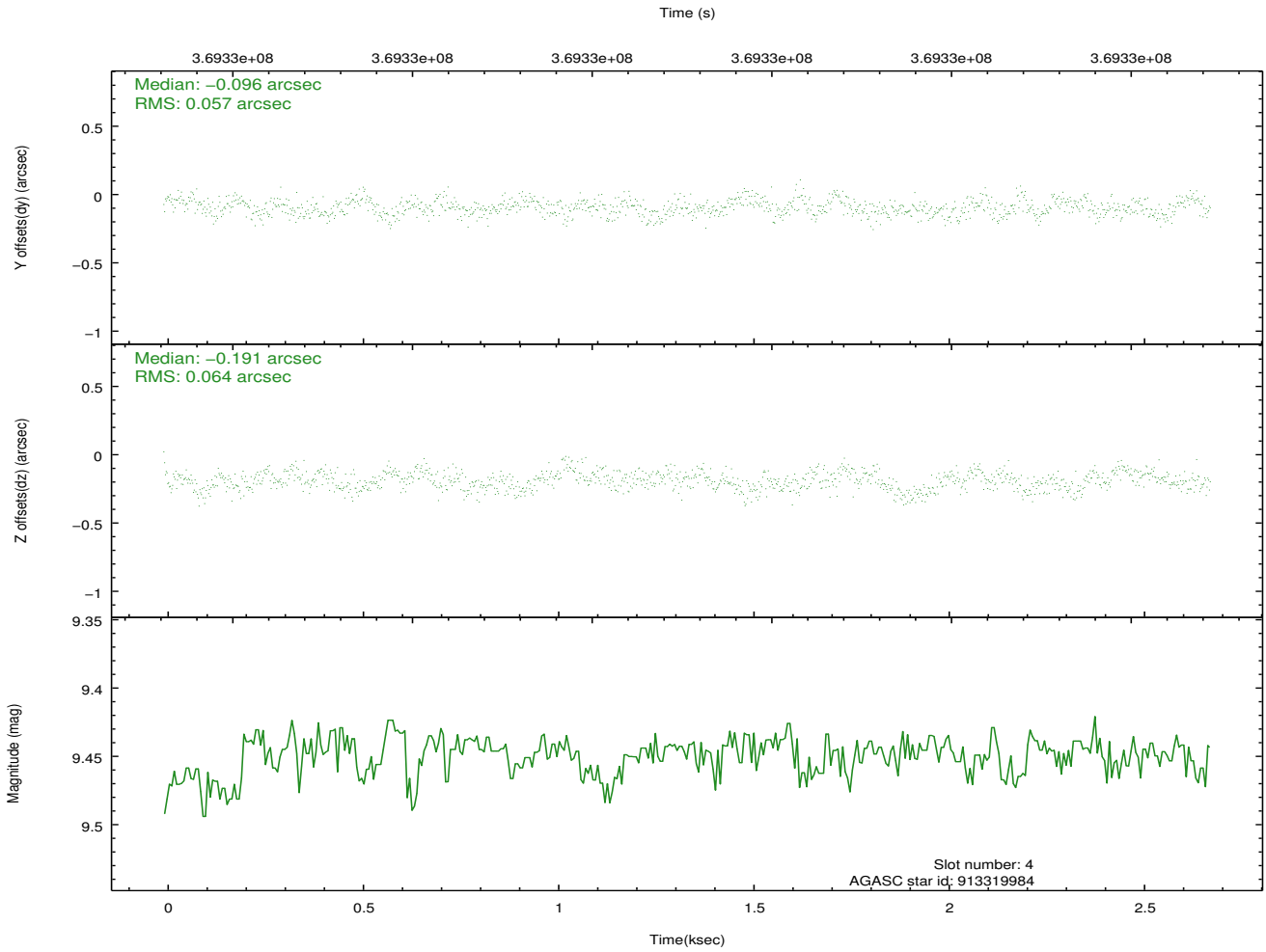
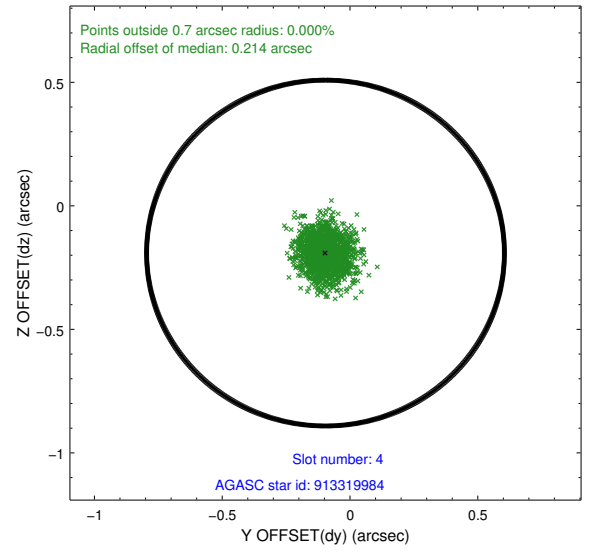
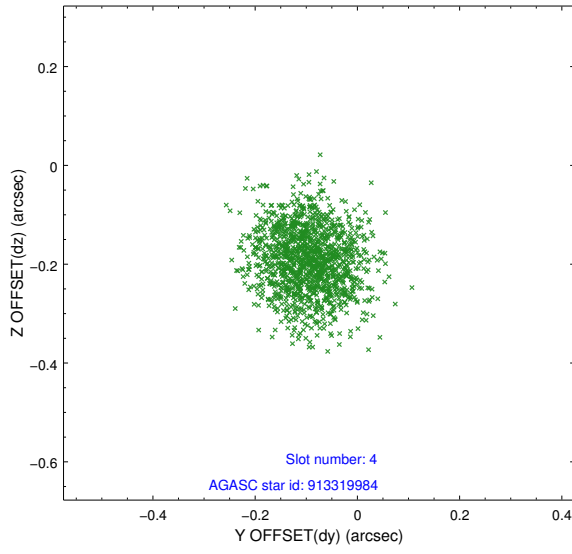


## 2.4 Star Slots

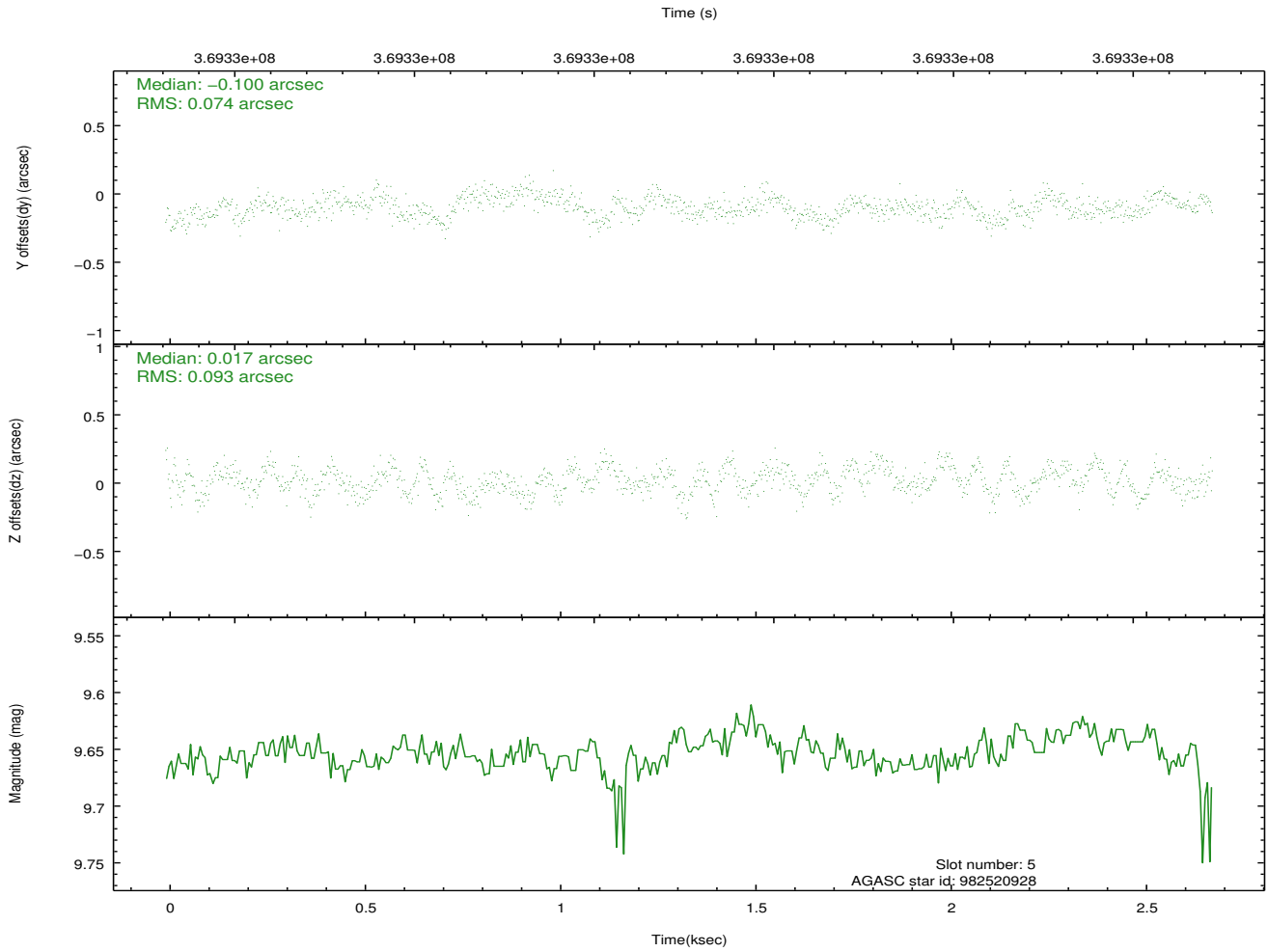
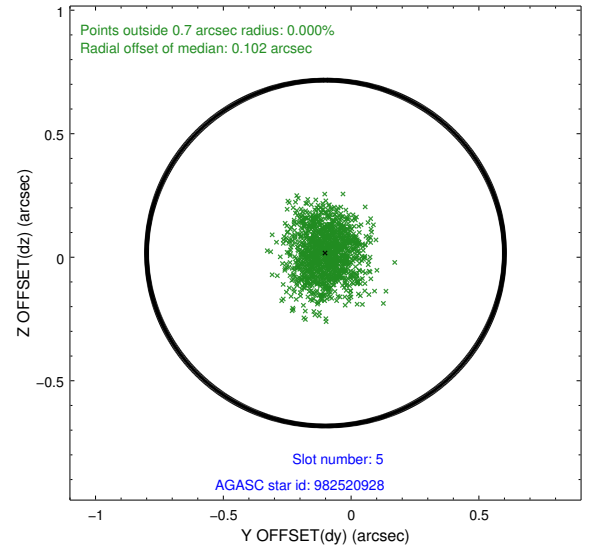
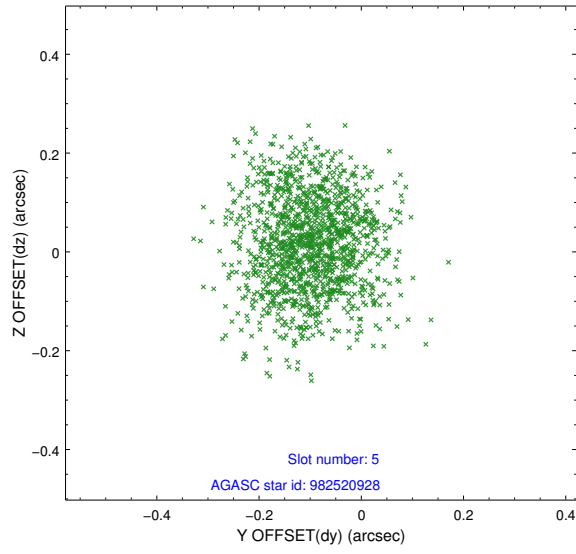
### 2.4.1 Slot 3



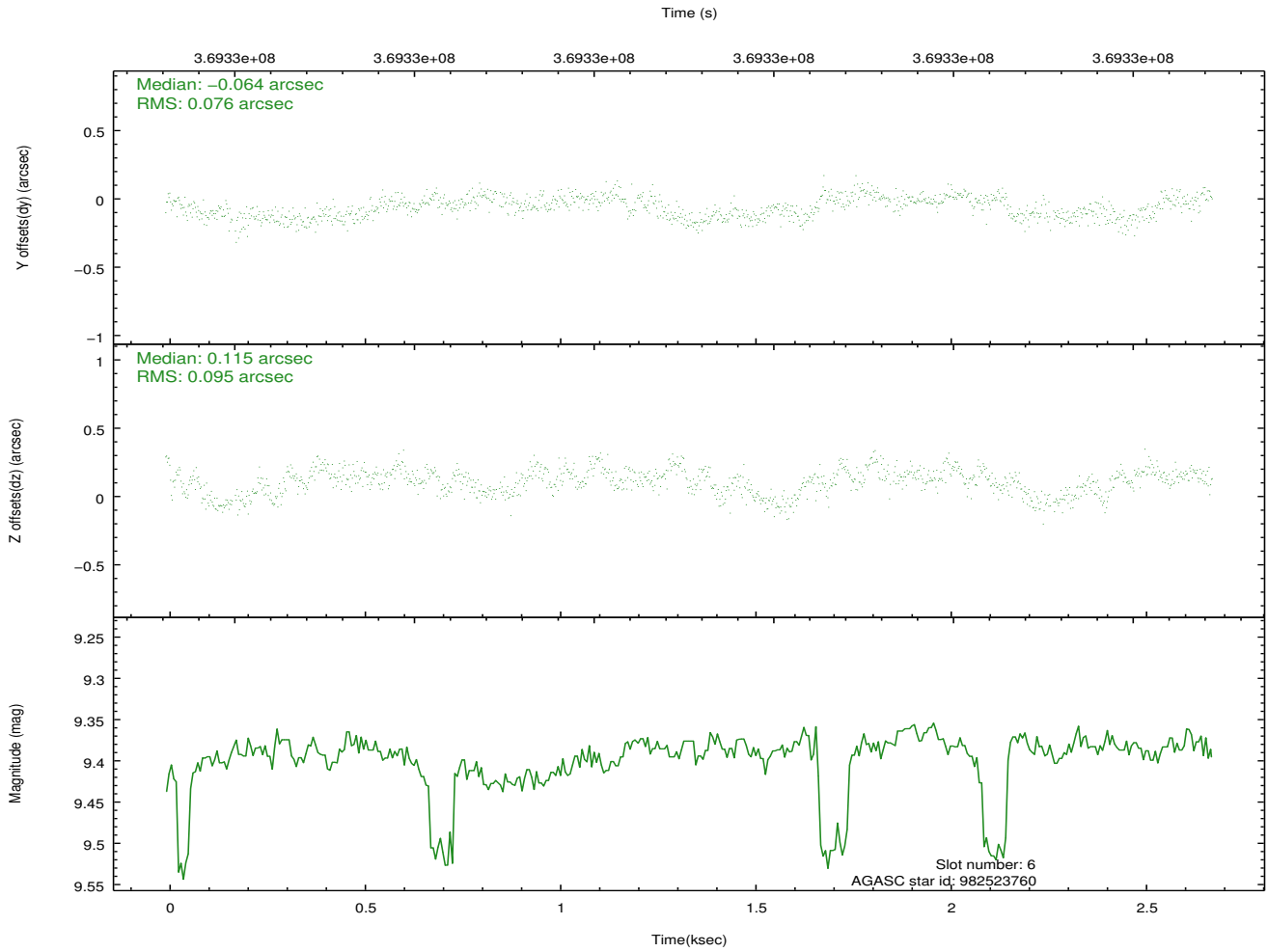
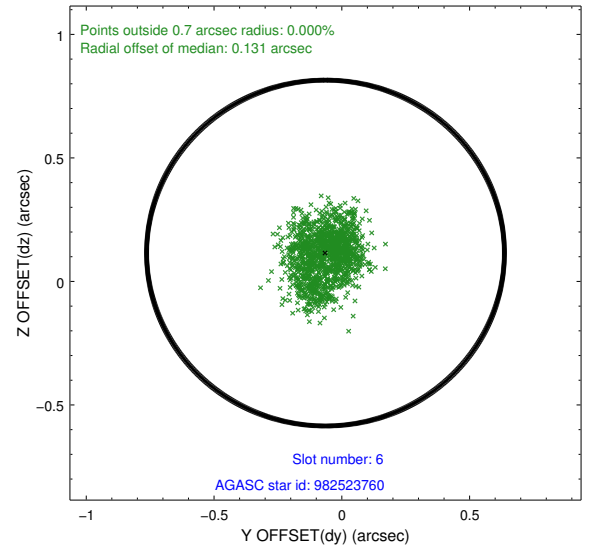
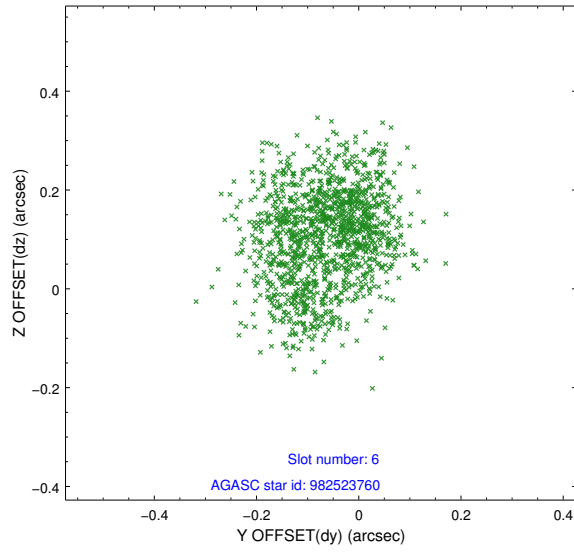
## 2.4.2 Slot 4



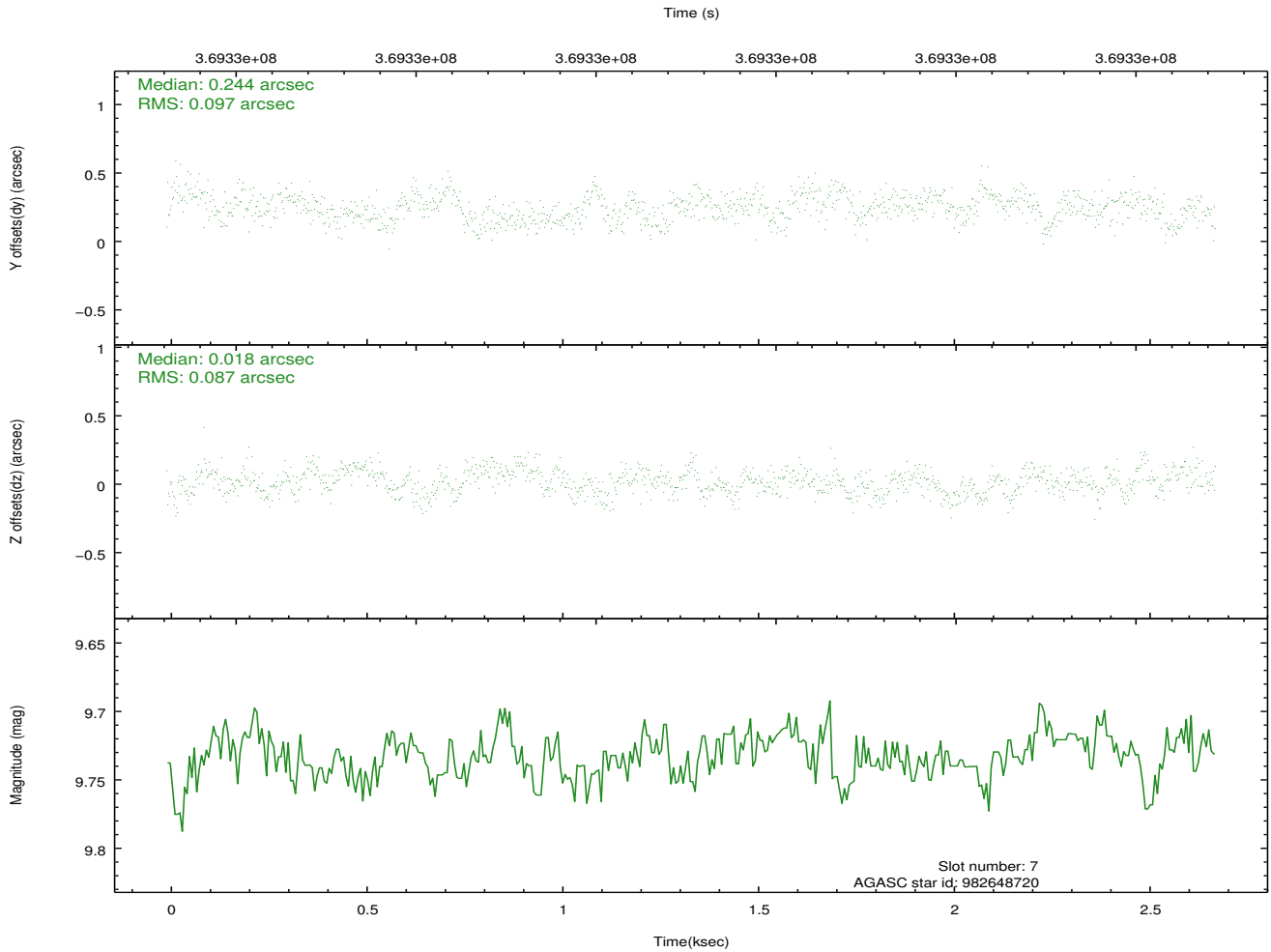
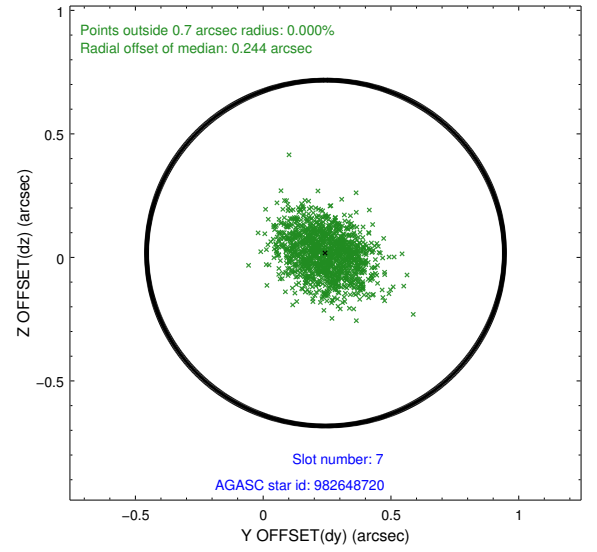
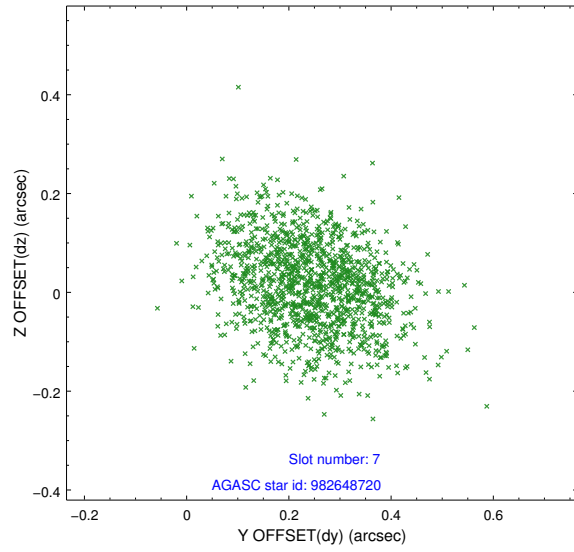
### 2.4.3 Slot 5



## 2.4.4 Slot 6

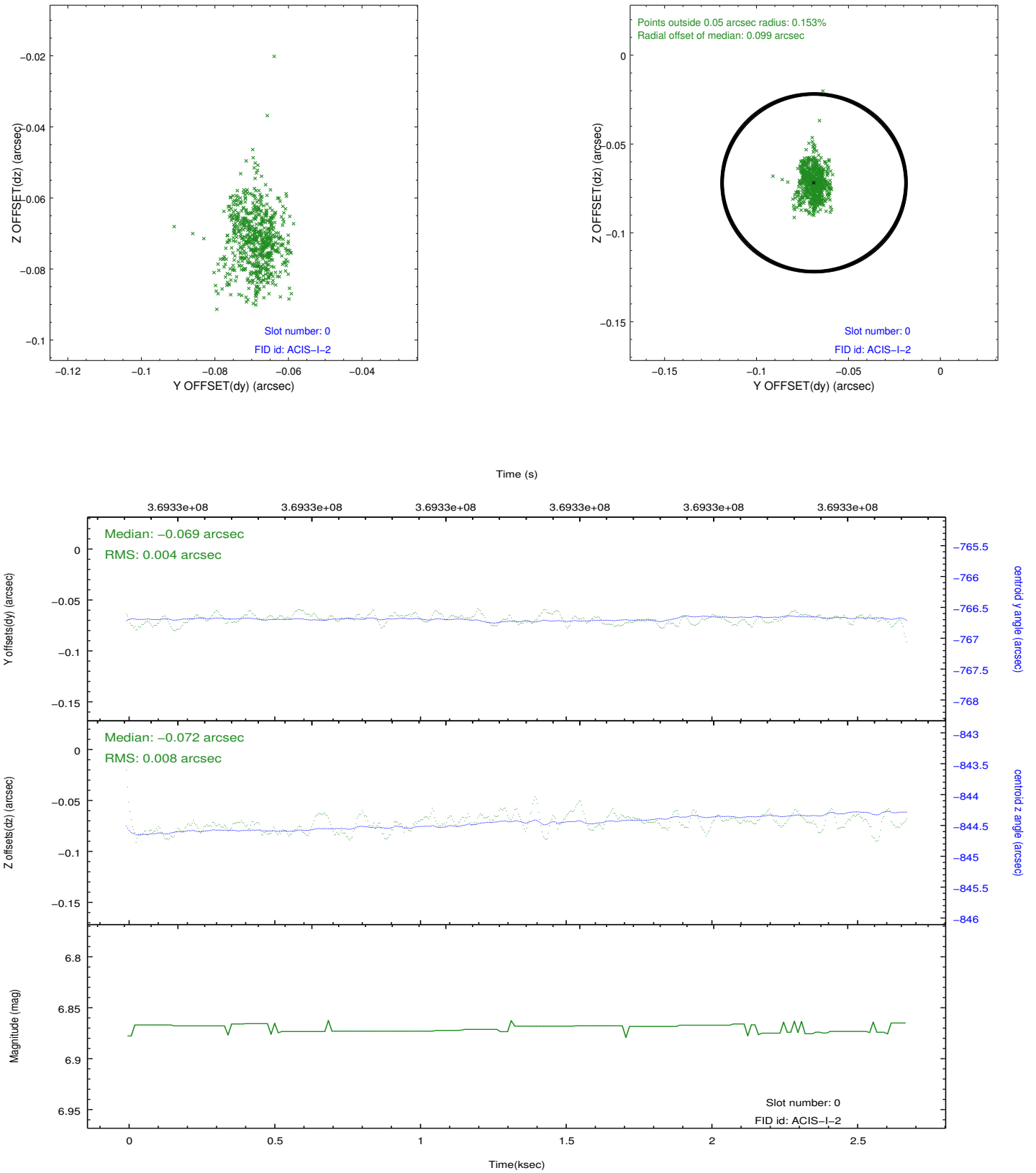


## 2.4.5 Slot 7

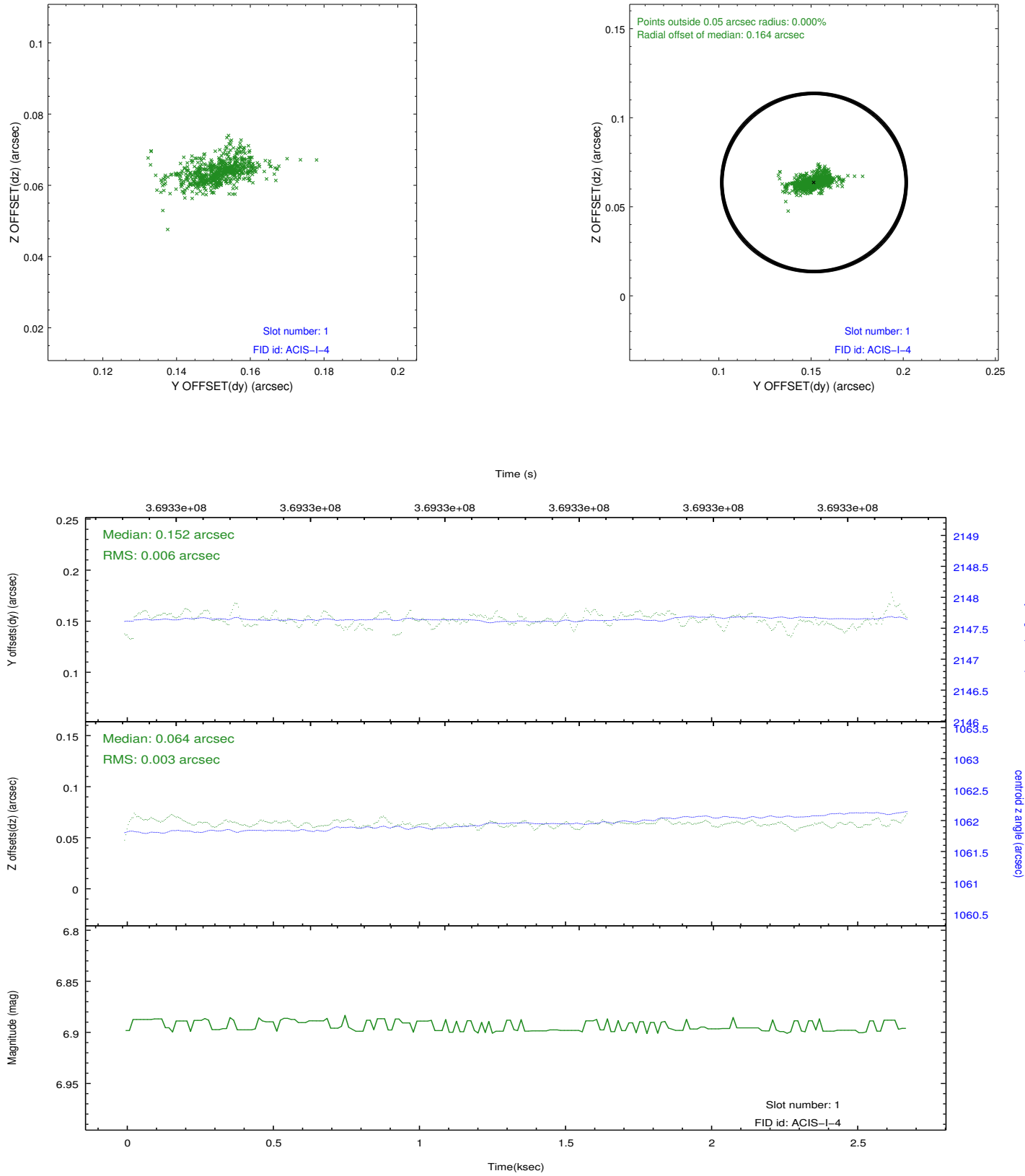


## 2.5 FID Slots

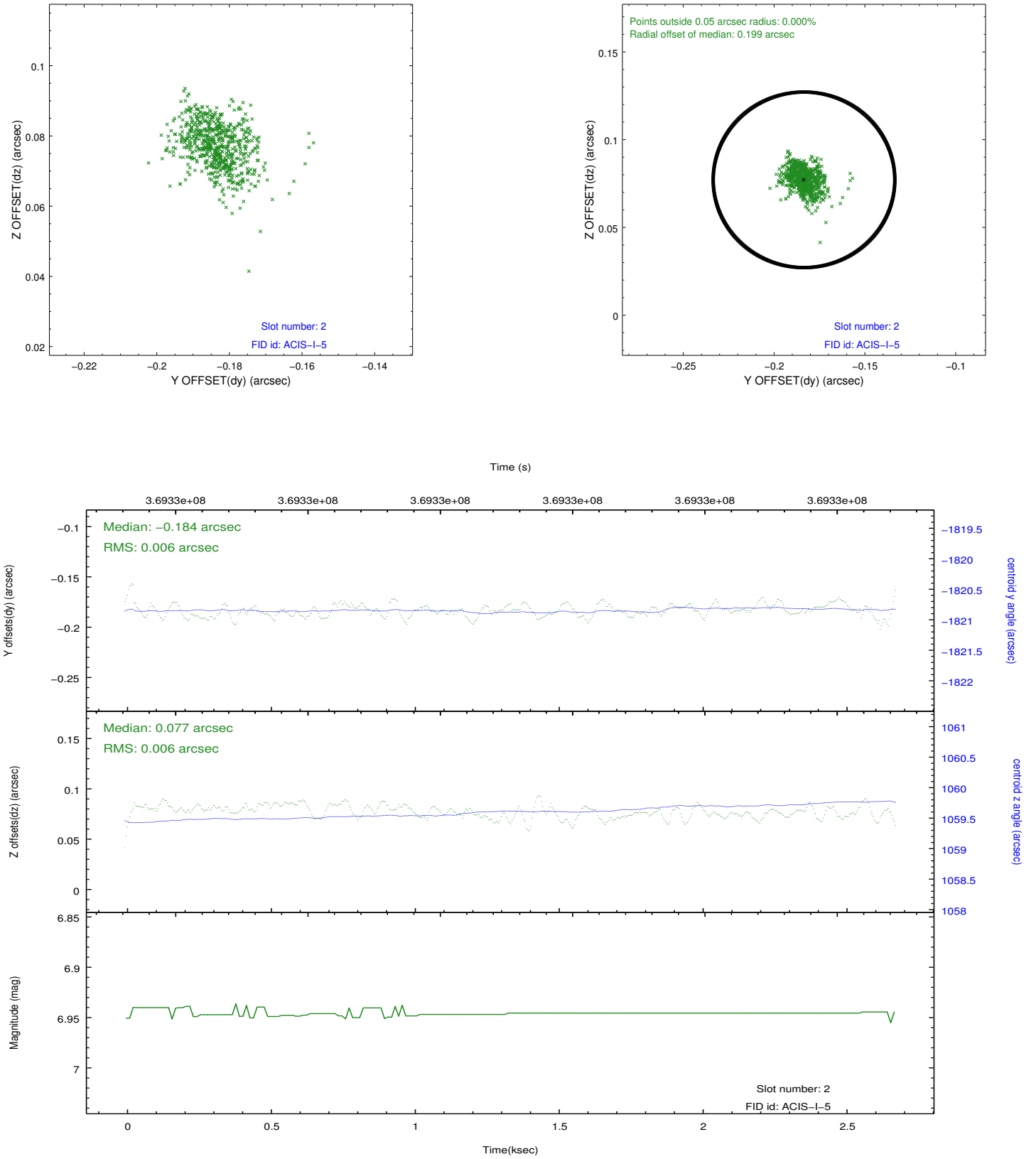
### 2.5.1 Slot 0



## 2.5.2 Slot 1



### 2.5.3 Slot 2





## A Summary

### A.1 Status

V&V Scientist	Jen Lauer
V&V Date (YYYY-MM-DD)	2012.06.15
V&V Edition	1
V&V Disposition and Status	OK
V&V Charge Time	2.6753000205755

### A.2 Comments