

V&V Reference Report

L2 ASCDS Version : 8.4.5

Observation 11369 - L2 Version 2
Chandra X-Ray Center

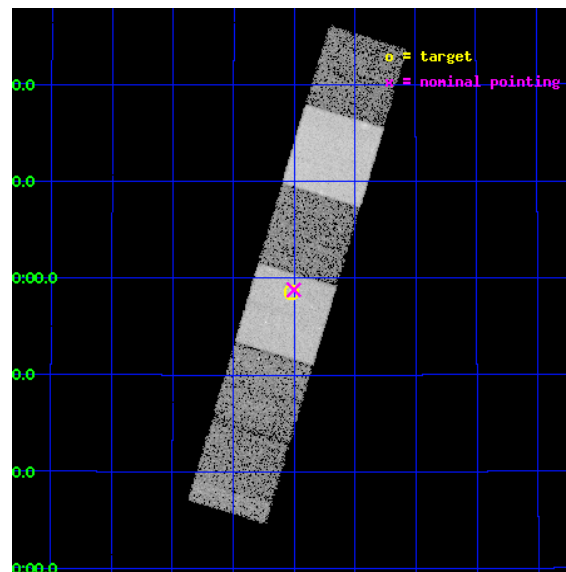
L2 Processing Date : Jun 19 2012

Contents

1	Front	2
2	OBI	3
2.1	OBI	3
2.1.1	Images	3
2.1.2	Bias	3
2.1.3	Parameters	4
2.1.4	Events	4
2.2	Compared Parameters	5
2.3	Aspect	6
2.4	Star Slots	9
2.4.1	Slot 3	9
2.4.2	Slot 4	10
2.4.3	Slot 5	11
2.4.4	Slot 6	12
2.4.5	Slot 7	13
2.5	FID Slots	14
2.5.1	Slot 0	14
2.5.2	Slot 1	15
2.5.3	Slot 2	16
A	Summary	17
A.1	Status	17
A.2	Comments	17

1 Front

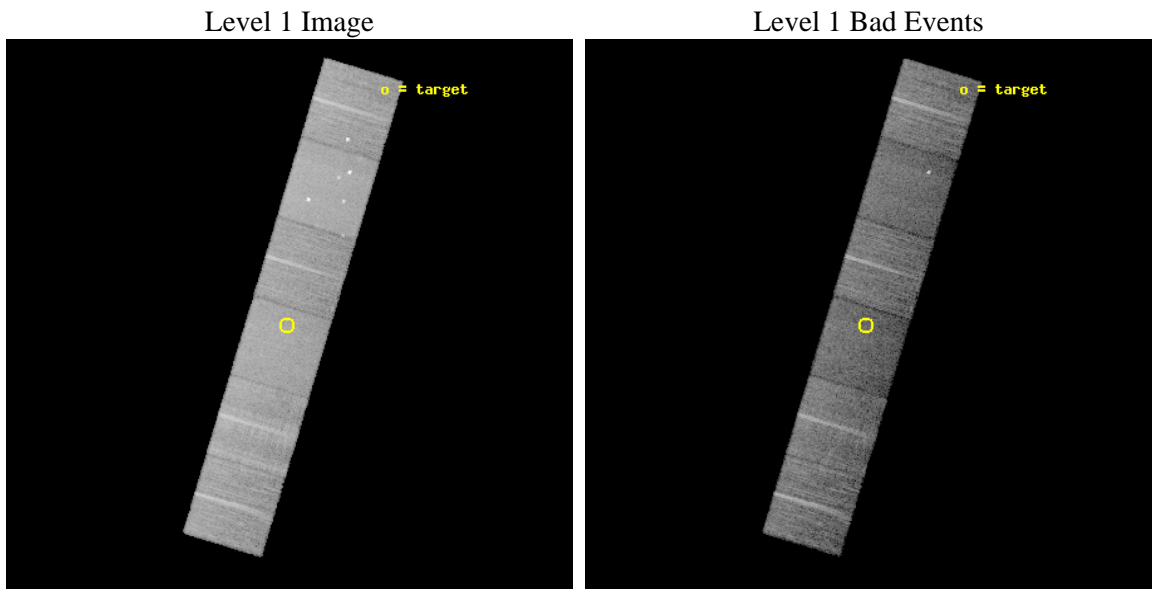
seq_num	600888	Sequence number
obs_id	11369	Observation id
title	Accretion onto nuclear black holes in early type galaxies: comparing field vs. clusters	Proposal title
observer	Elena Gallo	Principal investigator
object	NGC2970	Source name
dtcycle	0	
cycle	P	events from which exps? Prim/Second/Both
ra_targ	145.88	Observer's specified target RA [deg]
dec_targ	31.9769	Observer's specified target Dec [deg]
ra_nom	145.87573959474	Nominal RA [deg]
dec_nom	31.980107698272	Nominal Dec [deg]
roll_nom	106.74968311426	Nominal Roll [deg]
revision	2	Processing version of data
ontime	10633.599960446	Sum of GTIs [s]
livetime	10498.950914962	Livetime [s]
ontime4	10633.599960446	Sum of GTIs [s]
ontime5	10633.599960446	Sum of GTIs [s]
ontime6	10633.599960446	Sum of GTIs [s]
ontime7	10633.599960446	Sum of GTIs [s]
ontime8	10633.599960446	Sum of GTIs [s]
ontime9	10633.599960446	Sum of GTIs [s]
l2events	143129	Number of level 2 events



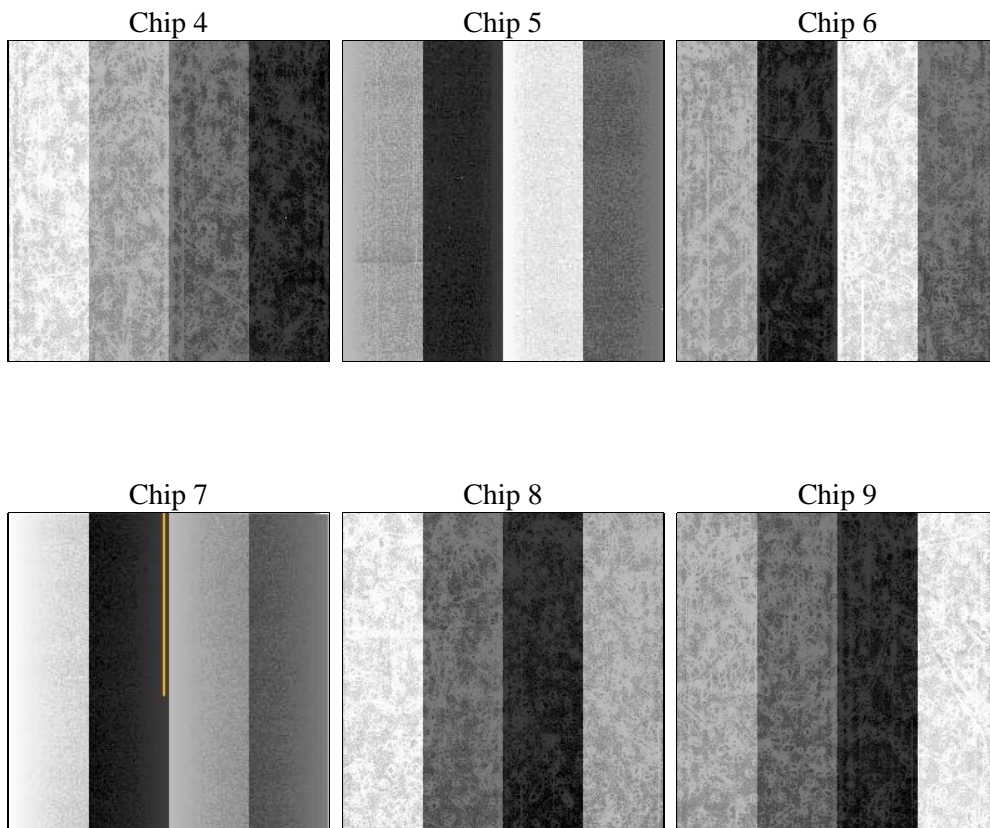
2 OBI

2.1 OBI

2.1.1 Images



2.1.2 Bias



2.1.3 Parameters

obi_num	0	Obi number	sched_exp_time	10600.000000	[s] Scheduled observation exposure time
ascdsver	8.4.5	Processing system revision	ontime	10633.599960446	Sum of GTIs [s]
caldsver	4.4.10	 	ontime4	10633.599960446	Sum of GTIs [s]
date	2012-06-19T22:13:31	Date and time of file creation	ontime5	10633.599960446	Sum of GTIs [s]
revision	2	Processing version of data	ontime6	10633.599960446	Sum of GTIs [s]
			ontime7	10633.599960446	Sum of GTIs [s]
			ontime8	10633.599960446	Sum of GTIs [s]
			ontime9	10633.599960446	Sum of GTIs [s]
			l1events	655459	Number of level 1 events

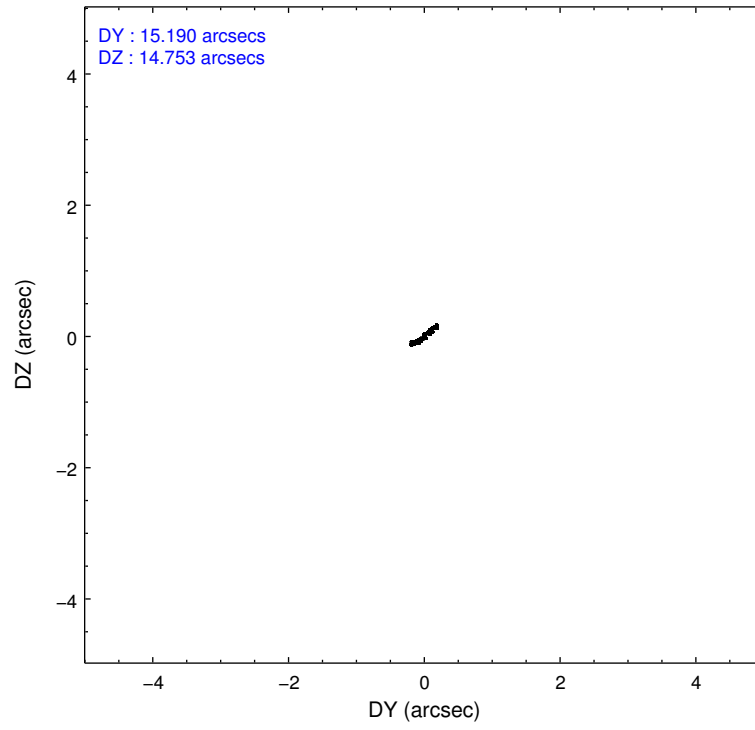
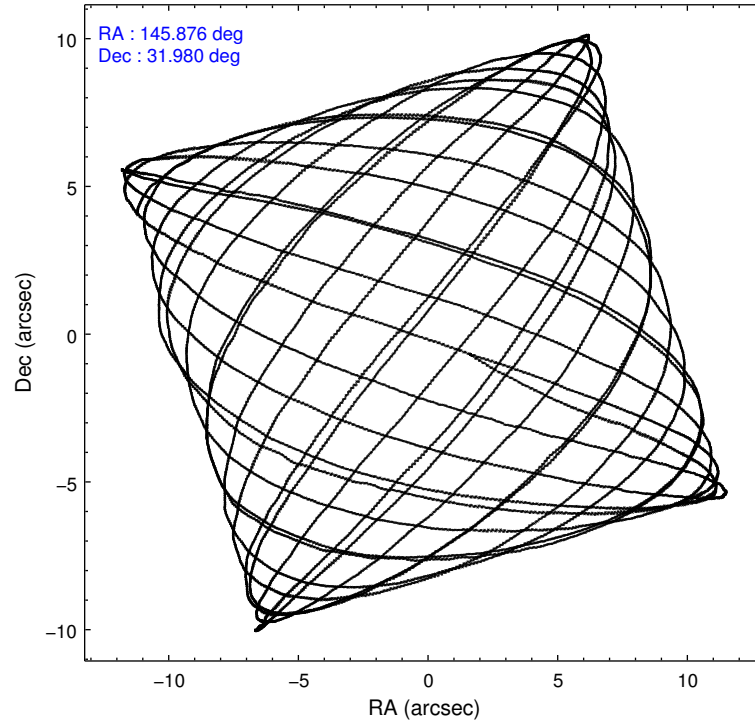
2.1.4 Events

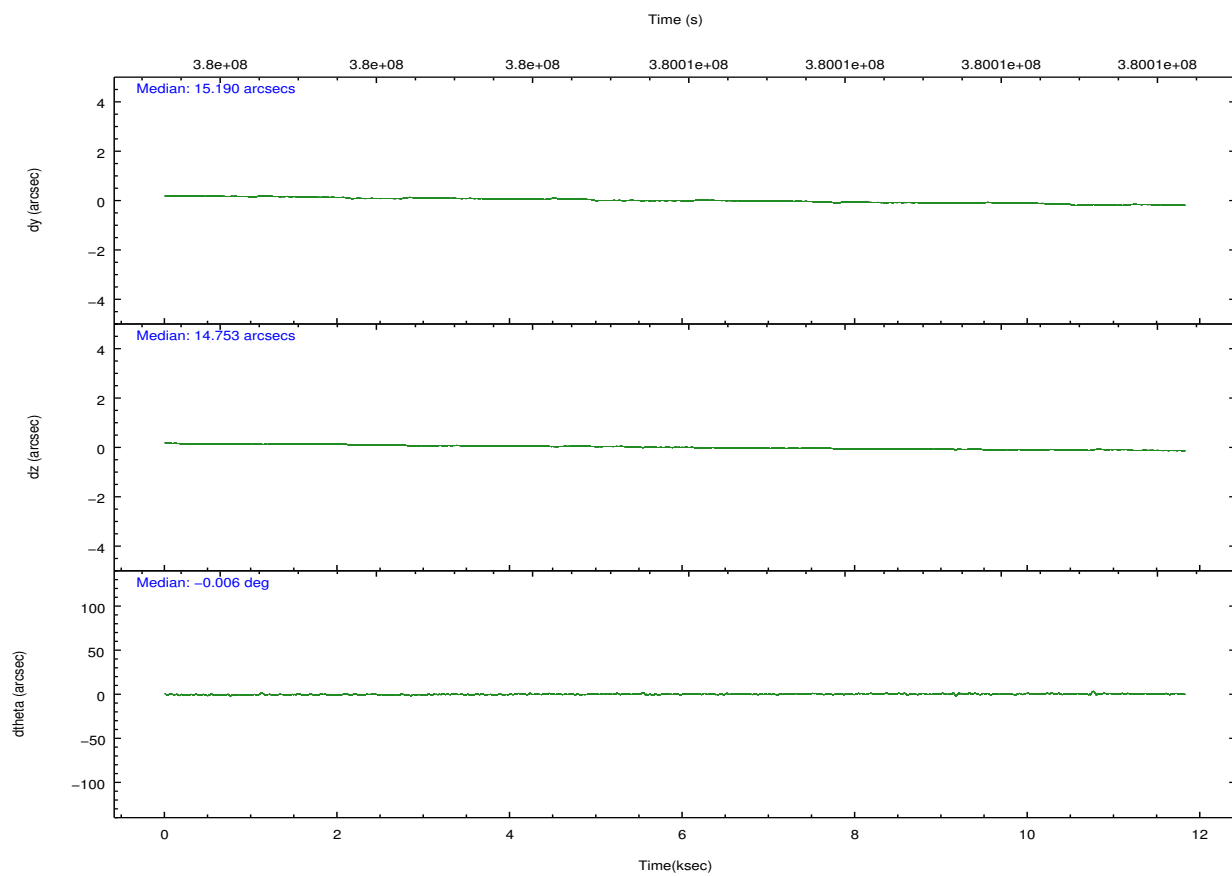
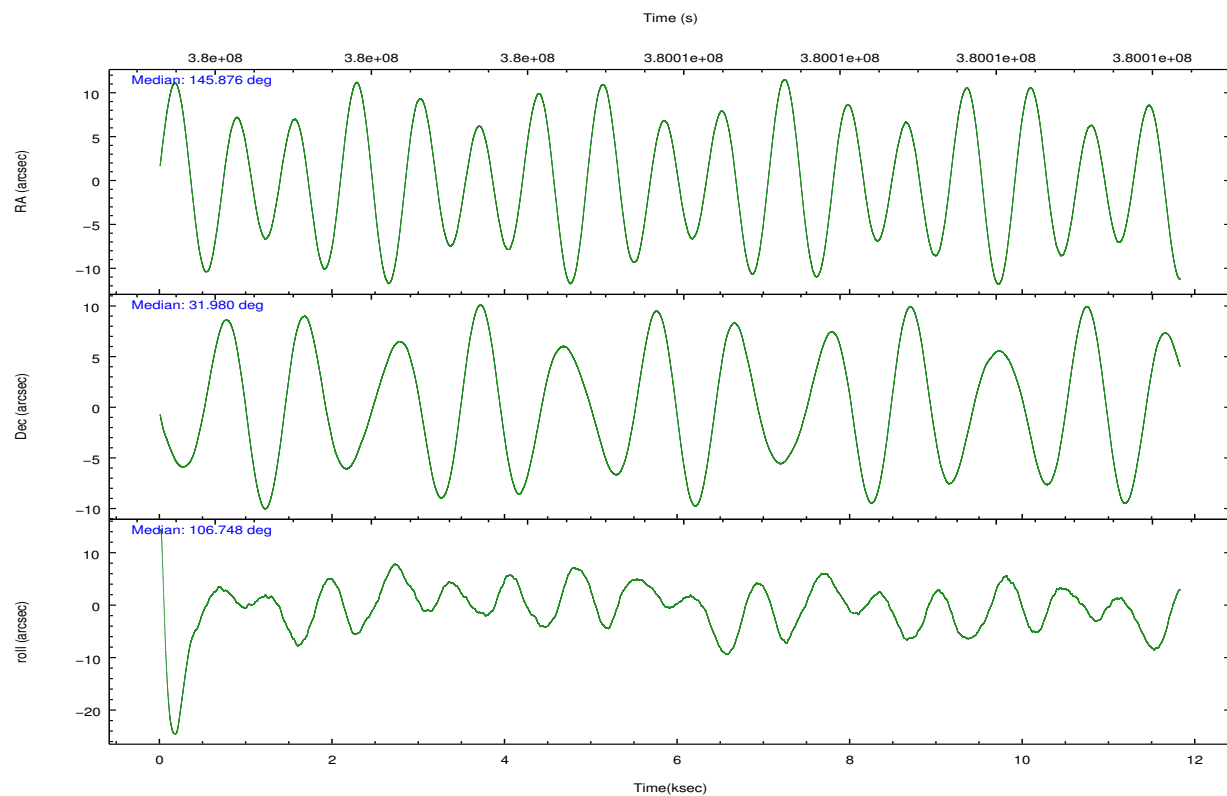
	ccd 4	ccd 5	ccd 6	ccd 7	ccd 8	ccd 9		ccd 4	ccd 5	ccd 6	ccd 7	ccd 8	ccd 9
level 1 events	108731	137015	93201	107367	116507	92638	grade 0 events	5865	8730	3388	4454	8861	3940
rejected events	96548	67686	83526	59146	86735	82200		5%	6%	3%	4%	7%	4%
rejected %	88%	49%	89%	55%	74%	88%	grade 1 events	108	306	50	139	91	56
								0%	0%	0%	0%	0%	0%
							grade 2 events	2525	20757	2102	9891	6845	2151
								2%	15%	2%	9%	5%	2%
							grade 3 events	1115	2595	1053	4280	3351	1102
								1%	1%	1%	3%	2%	1%
							grade 4 events	1034	2480	1029	4276	3125	1065
								0%	1%	1%	3%	2%	1%
							grade 5 events	3770	10627	3824	11236	5804	4202
								3%	7%	4%	10%	4%	4%
							grade 6 events	1650	34803	2106	25343	7622	2185
								1%	25%	2%	23%	6%	2%
							grade 7 events	92664	56717	79649	47748	80808	77937
								85%	41%	85%	44%	69%	84%

2.2 Compared Parameters

Parameter	Planned	Actual	Parameter	Planned	Actual
Instrument	ACIS	ACIS	Obspar format version number	7	7
Detector	ACIS-456789	ACIS-456789	Obspar file type	PREDICTED	ACTUAL
Grating	NONE	NONE	Obspar update status	NONE	UPDATED
Data mode	VFAINT	VFAINT	CCD I0 on	N	N
Observation mode	POINTING	POINTING	CCD I1 on	N	N
[deg] Pointing RA	145.899490	145.8757395947369	CCD I2 on	N	N
[deg] Pointing Dec	31.961652	31.98010769827173	CCD I3 on	N	N
[deg] Pointing Roll	106.580479	106.7496831142622	CCD S0 on	O1	Y
[mm] SIM focus pos	-0.684267	-0.6828225247311905	CCD S1 on	Y	Y
[mm] SIM defocus	0	0.001444936568705701	CCD S2 on	Y	Y
[mm] SIM translation stage pos	-190.132523	-190.1400660498719	CCD S3 on	Y	Y
[mm] SIM translation stage offset	0	0.00754346686406393	CCD S4 on	Y	Y
[s] Observation start time (MET)	380001132.184000	379999607.15286	CCD S5 on	O2	Y
Observation start date	2010-01-16T03:51:06	2010-01-16T03:26:47	Number of optional ACIS chips dropped	0	0
[s] Observation end time (MET)	380011732.184000	380012049.11599	On-chip summing requested	N	N
Observation end date	2010-01-16T06:47:46	2010-01-16T06:54:09	Subarray requested	NONE	NONE
Read mode	TIMED	TIMED	Alternating exposures requested	N	N
			[s] Primary exposure time	0.000000	3.2

2.3 Aspect



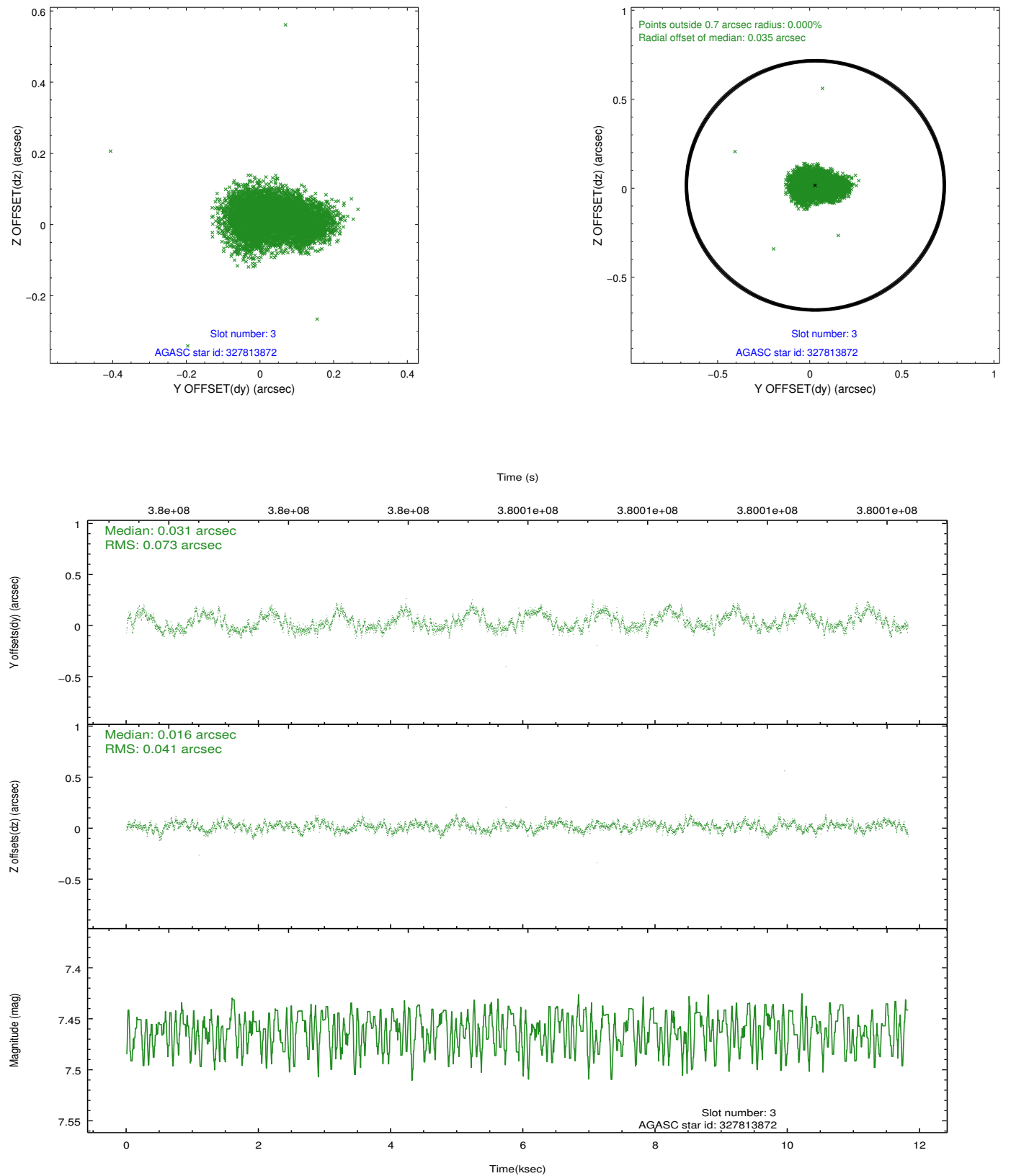


Slot Statistics

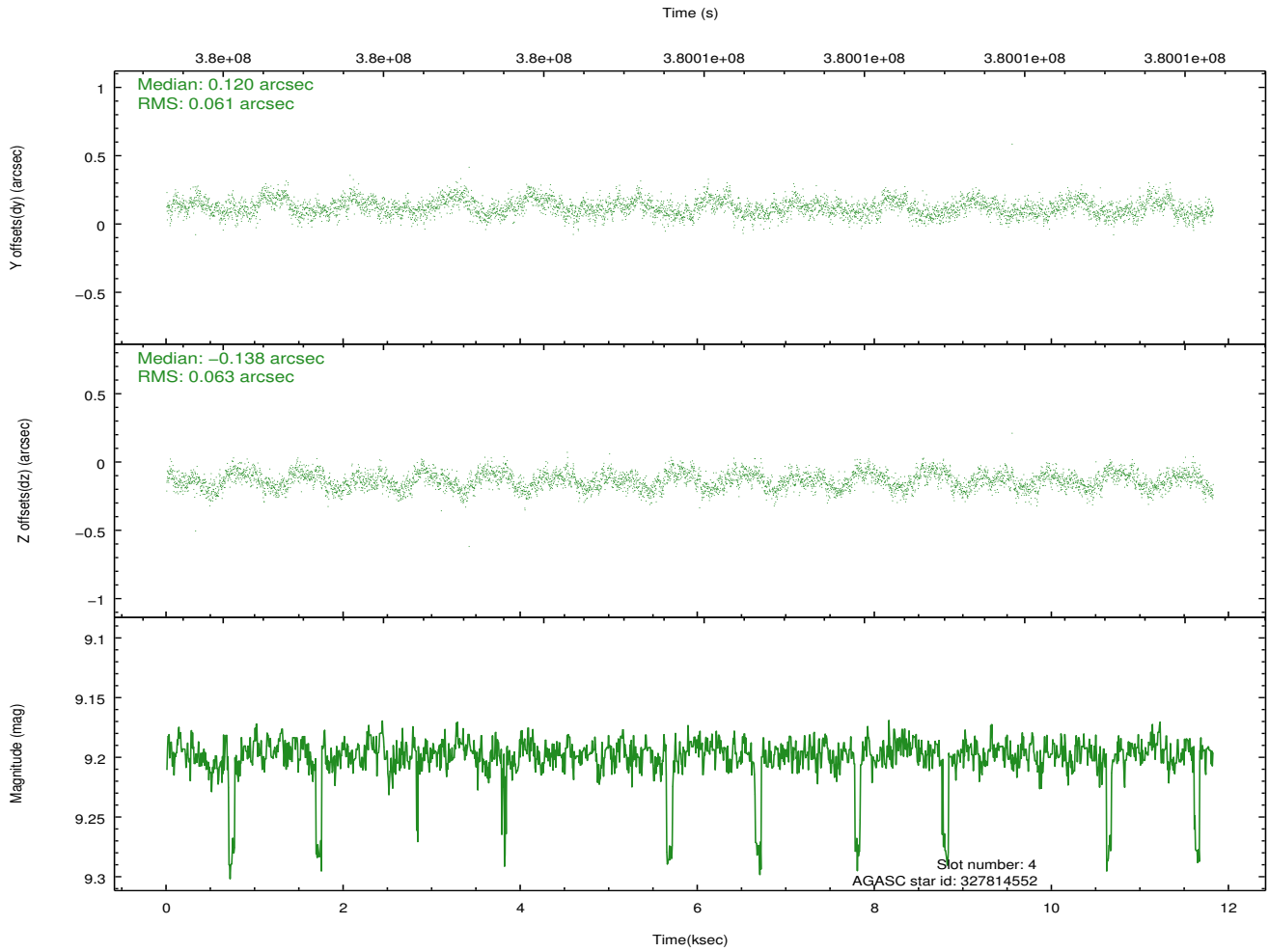
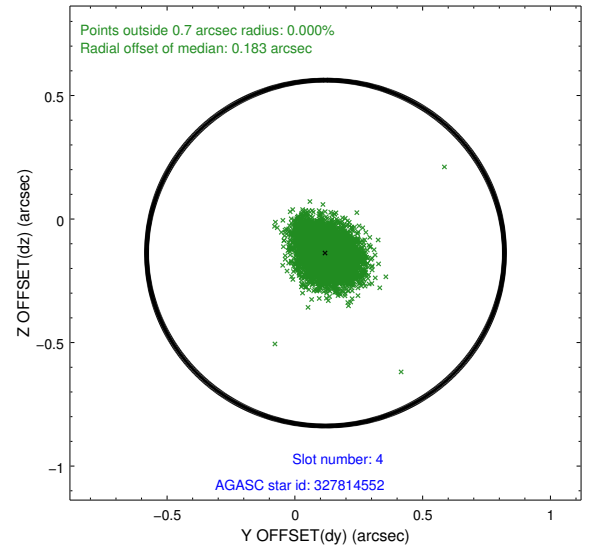
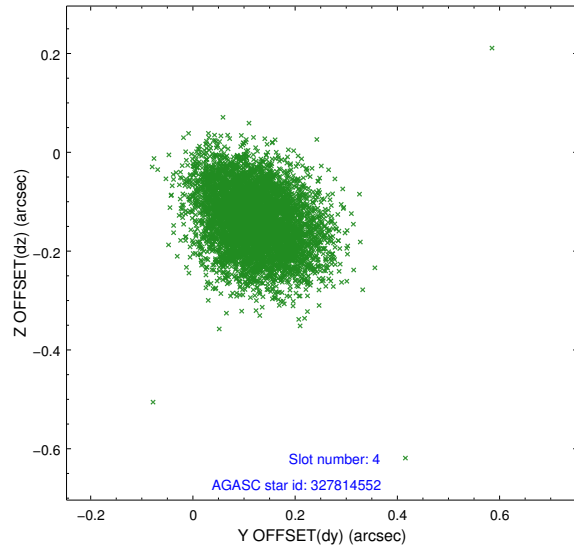
slot	status	id	mag	n_pts	med_dy	med_dz	dr1	dr2	ra	dec	mean_y	mean_z
0	FID	ACIS-S-1	7.01	2882	0.048	-0.020	0.010	0.017	0.000000	0.000000	927.93	-1731.77
1	FID	ACIS-S-5	7.05	2883	-0.138	0.023	0.014	0.022	0.000000	0.000000	-1821.03	165.36
2	FID	ACIS-S-6	7.17	2883	0.067	0.009	0.009	0.015	0.000000	0.000000	393.02	809.81
3	GUIDE	327813872	7.46	5766	0.031	0.016	0.089	0.140	145.729356	32.264760	1193.92	185.49
4	GUIDE	327814552	9.20	5737	0.120	-0.138	0.093	0.150	145.822744	31.473280	-1617.35	727.90
5	GUIDE	327815568	9.42	5758	0.102	-0.093	0.158	0.235	145.770601	31.620687	-1063.52	729.17
6	GUIDE	327815576	9.19	5761	-0.205	0.375	0.111	0.173	146.573244	32.078653	-176.90	-2090.88
7	GUIDE	327818768	9.57	5755	-0.053	-0.170	0.105	0.171	145.482868	31.460223	-1362.77	1740.40

2.4 Star Slots

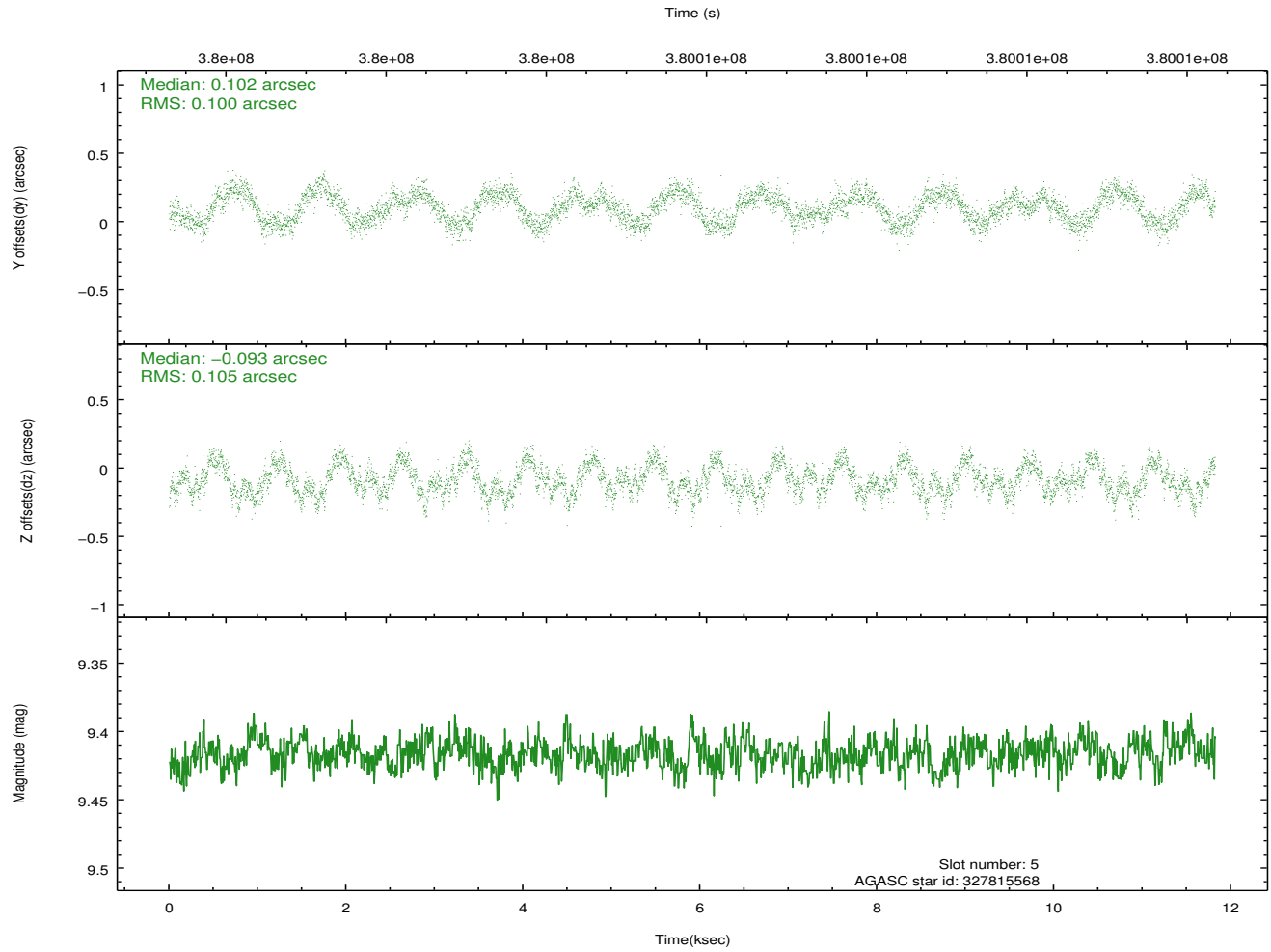
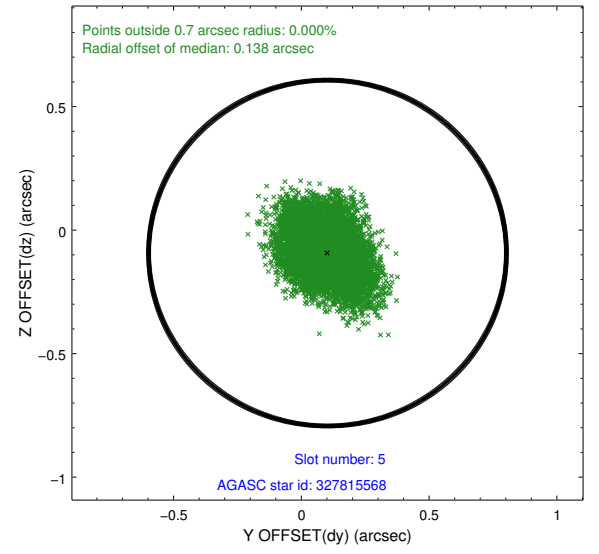
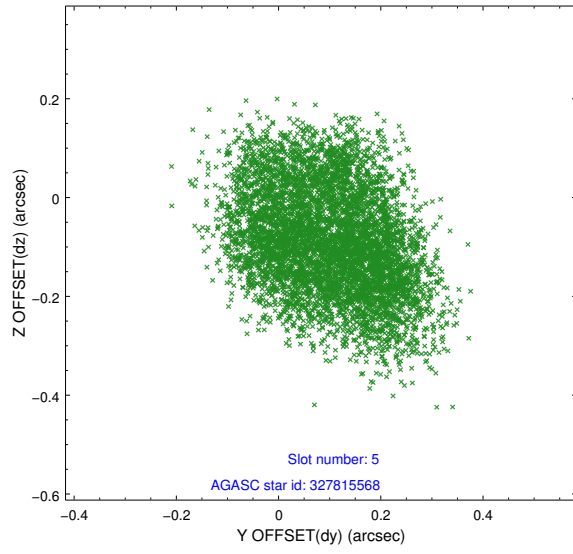
2.4.1 Slot 3



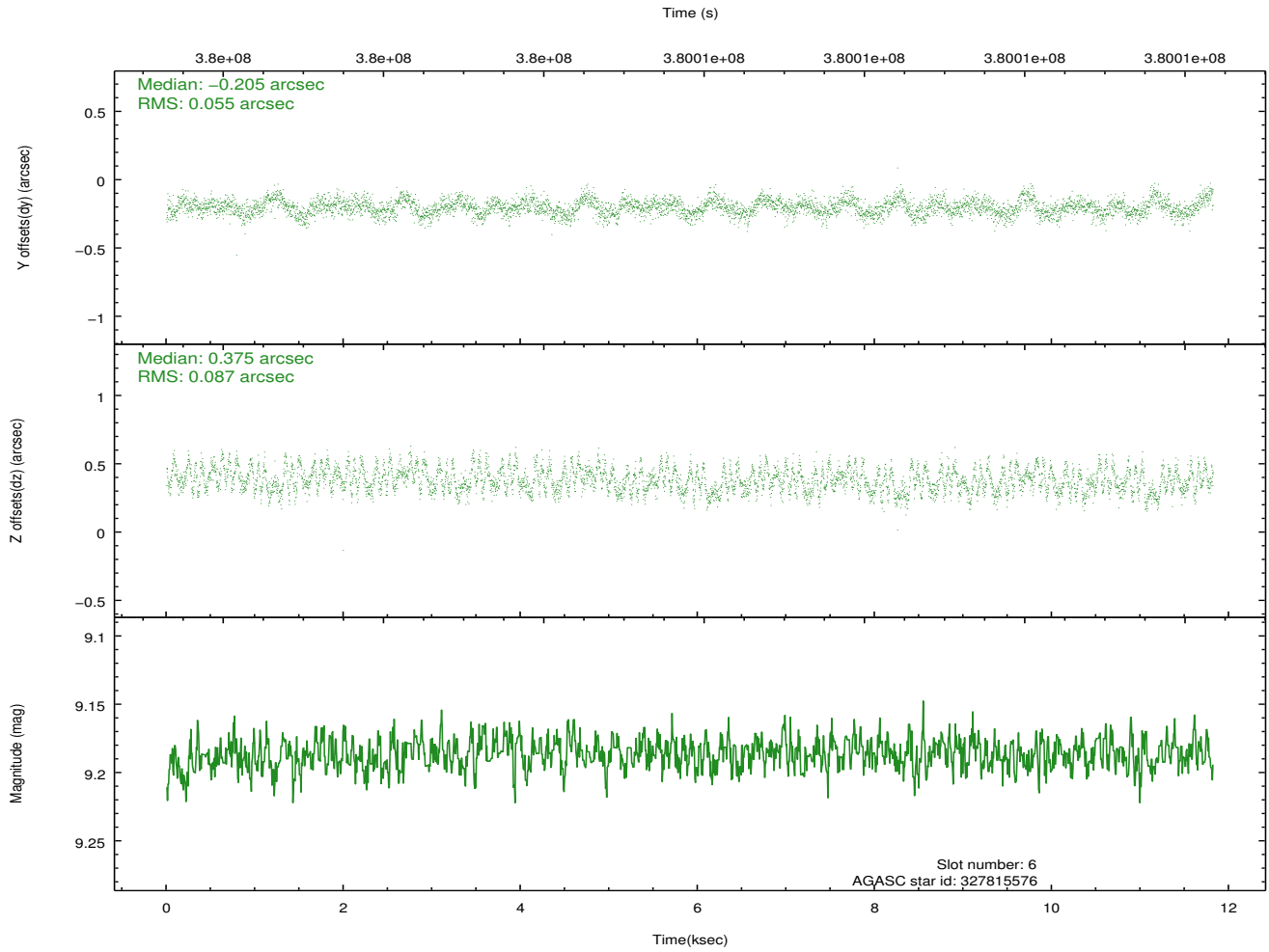
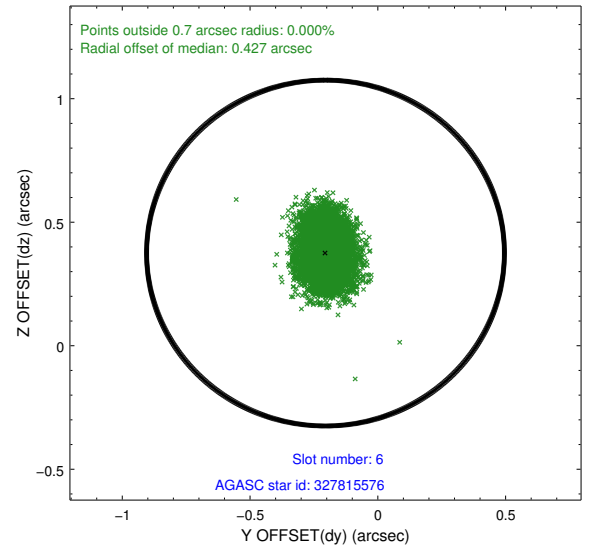
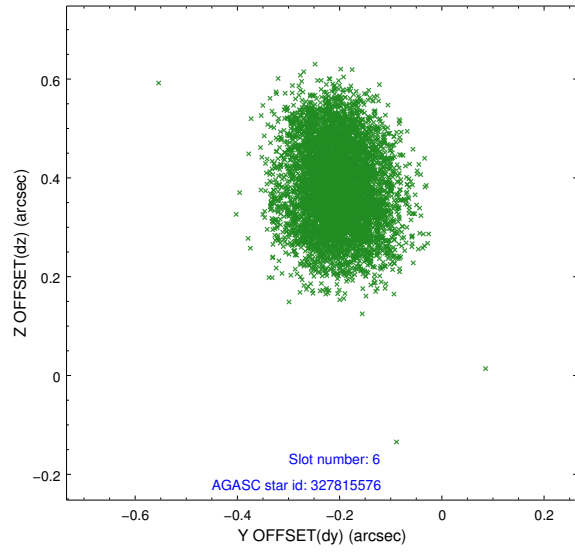
2.4.2 Slot 4



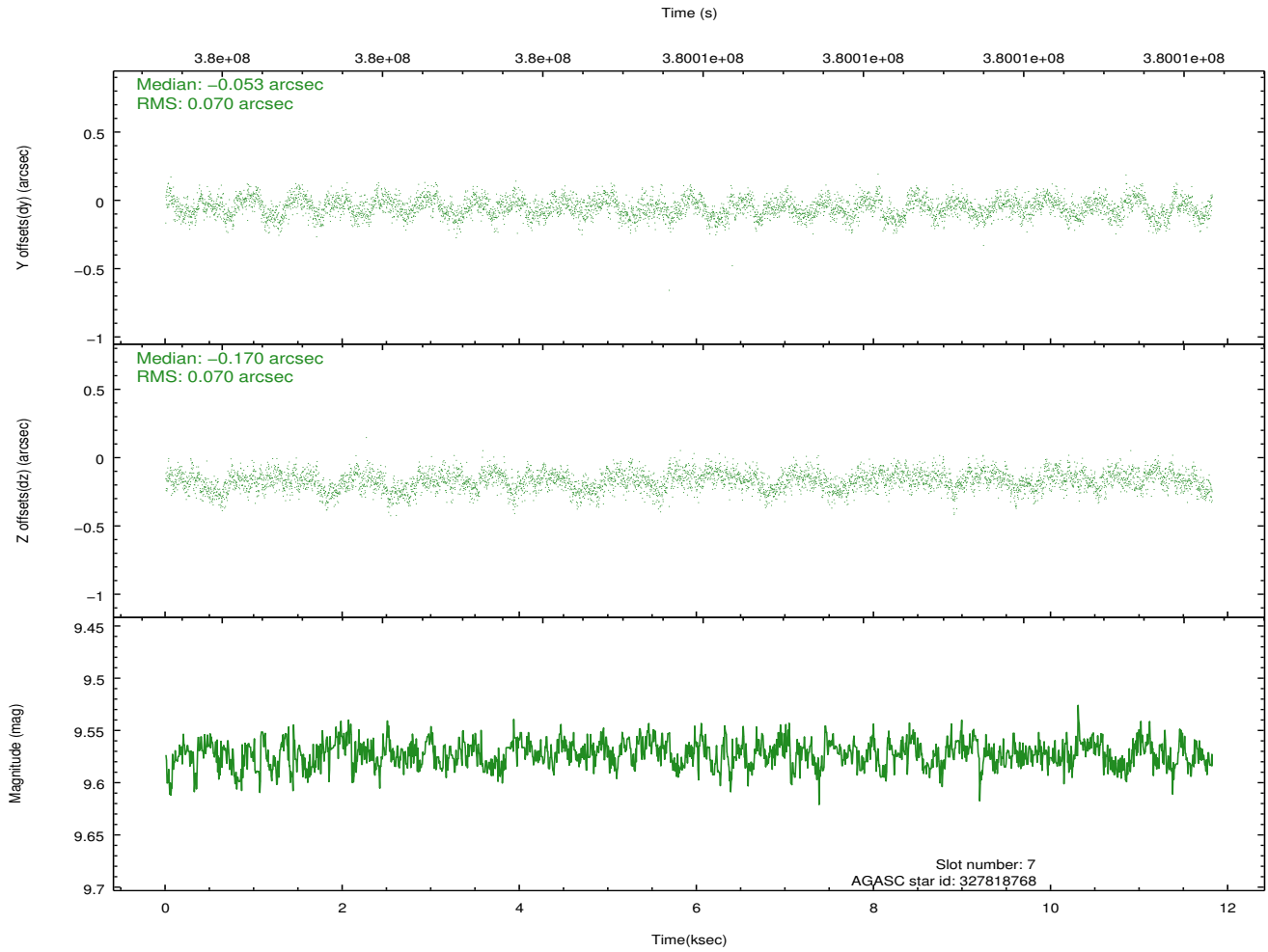
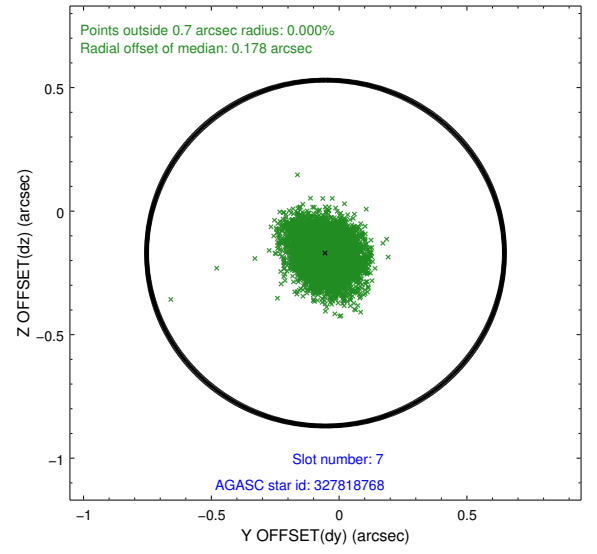
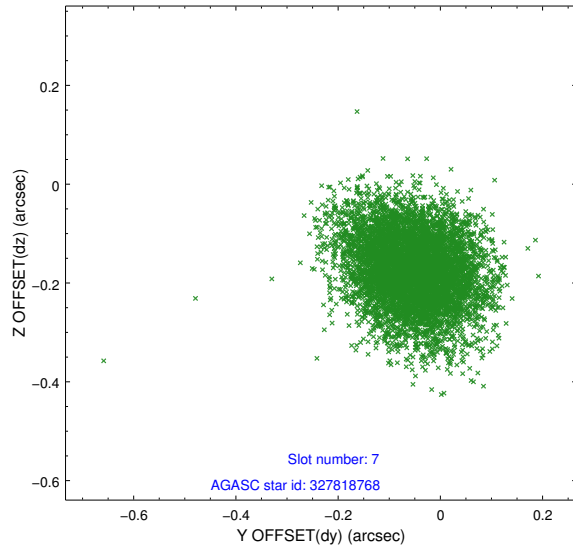
2.4.3 Slot 5



2.4.4 Slot 6

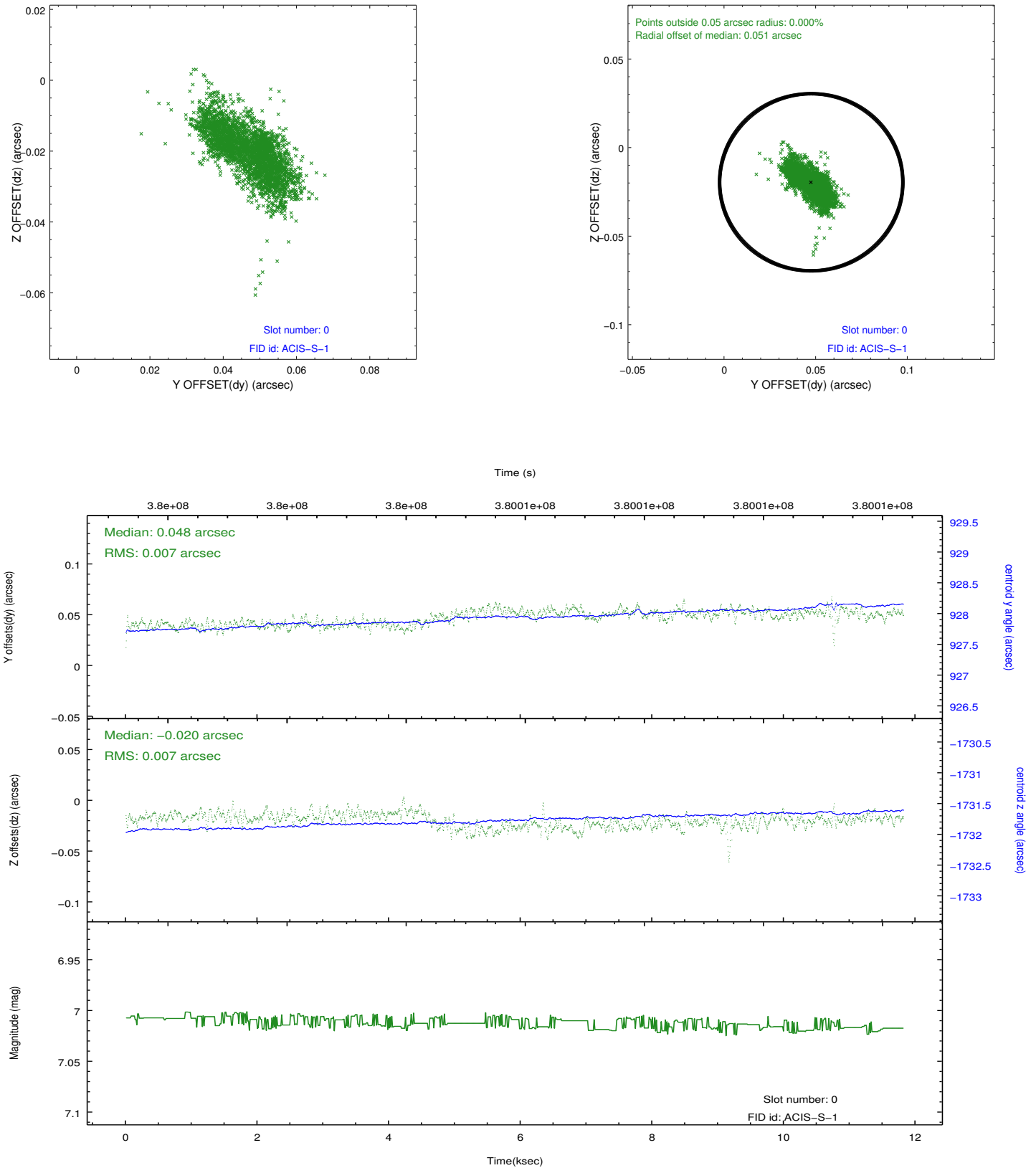


2.4.5 Slot 7

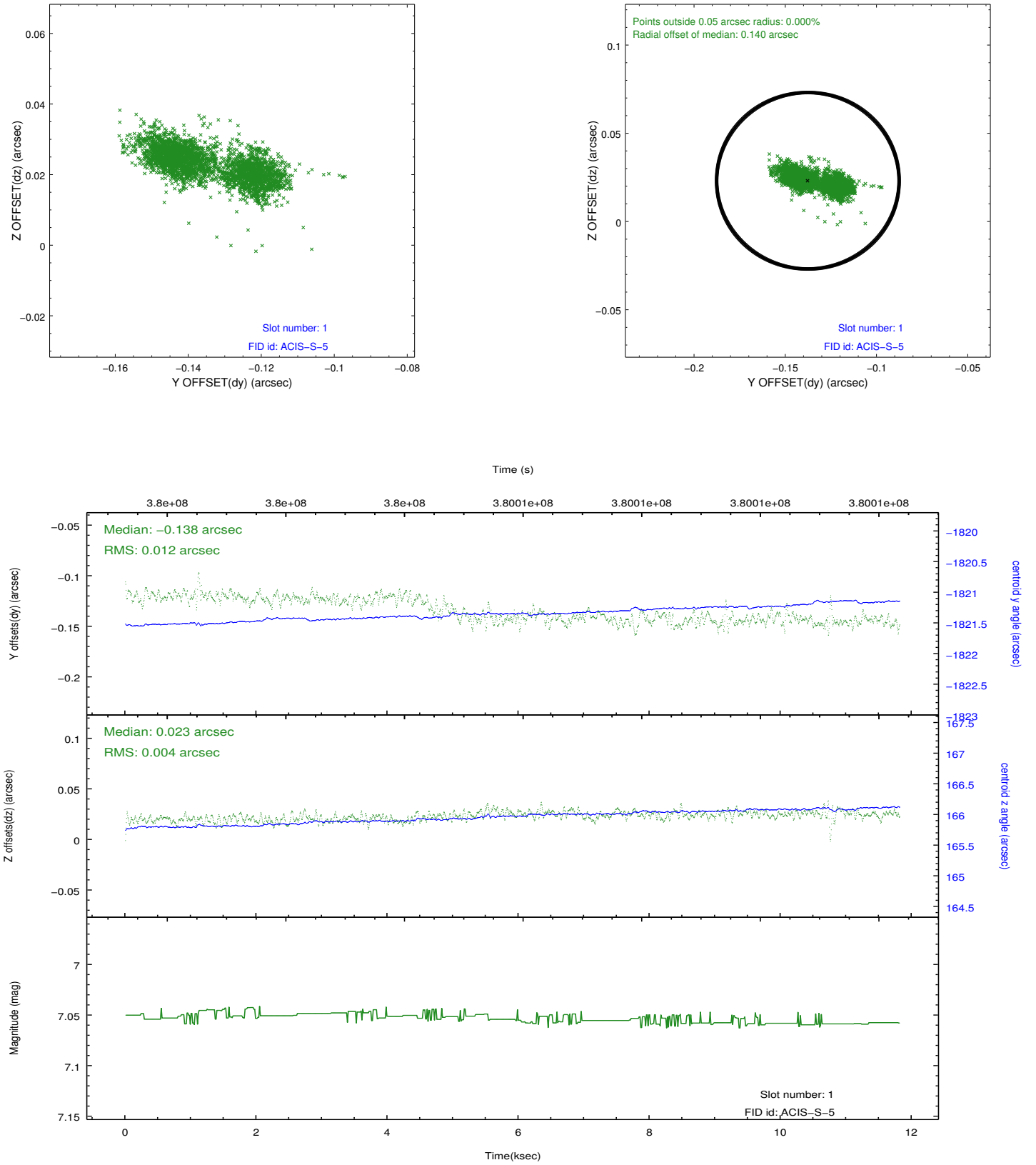


2.5 FID Slots

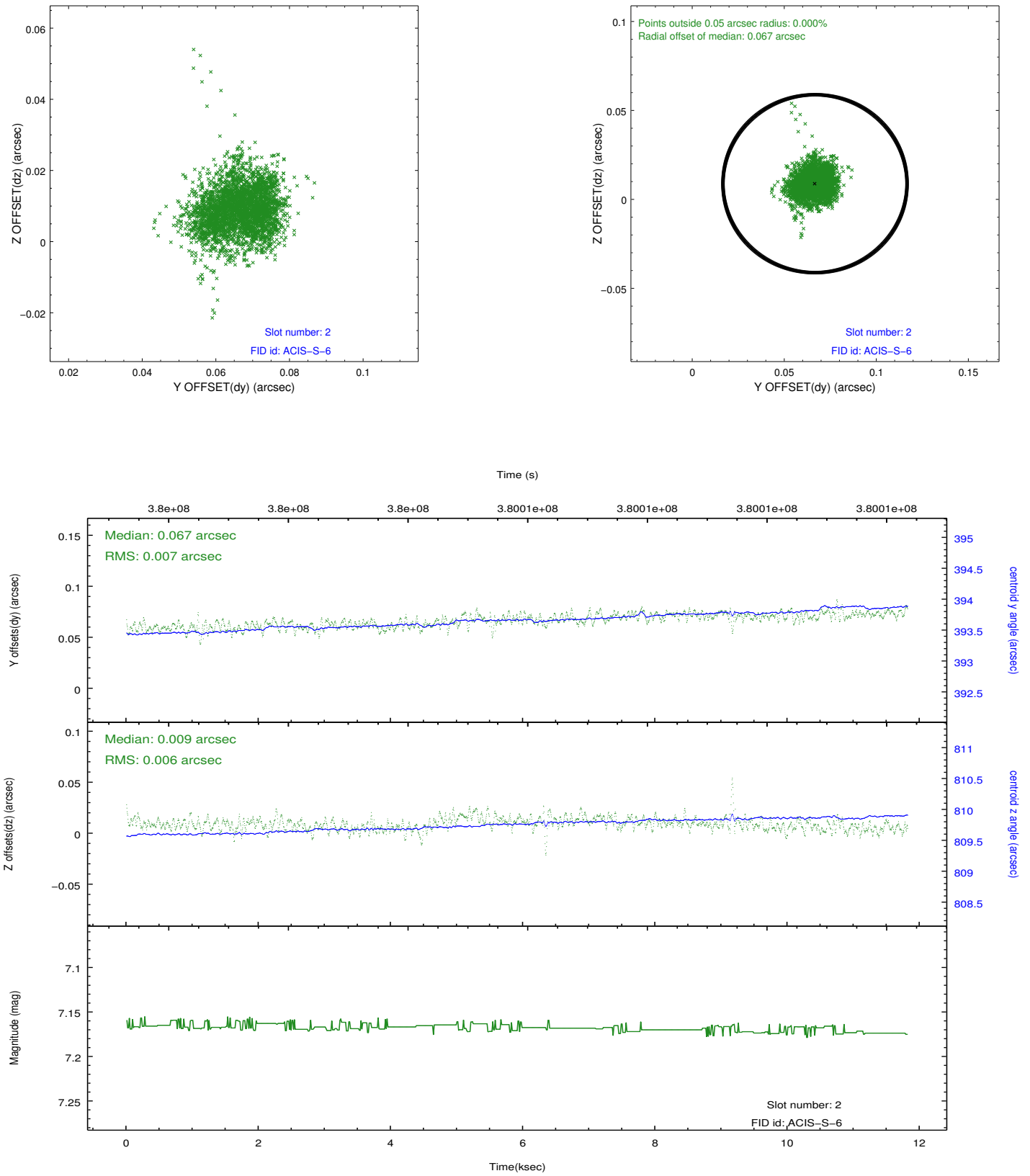
2.5.1 Slot 0



2.5.2 Slot 1



2.5.3 Slot 2



A Summary

A.1 Status

V&V Scientist	Jen Lauer
V&V Date (YYYY-MM-DD)	2012.06.25
V&V Edition	1
V&V Disposition and Status	OK
V&V Charge Time	10.633599960446

A.2 Comments