

V&V Reference Report

L2 ASCDS Version : 8.4.5

Observation 11364 - L2 Version 2
Chandra X-Ray Center

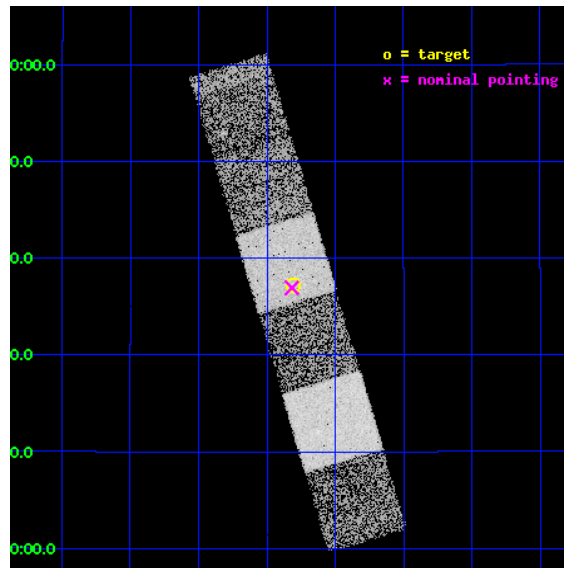
L2 Processing Date : Jun 29 2012

Contents

1	Front	2
2	OBI	3
2.1	OBI	3
2.1.1	Images	3
2.1.2	Bias	3
2.1.3	Parameters	4
2.1.4	Events	4
2.2	Compared Parameters	5
2.3	Aspect	6
2.4	Star Slots	9
2.4.1	Slot 3	9
2.4.2	Slot 4	10
2.4.3	Slot 5	11
2.4.4	Slot 6	12
2.4.5	Slot 7	13
2.5	FID Slots	14
2.5.1	Slot 0	14
2.5.2	Slot 1	15
2.5.3	Slot 2	16
A	Summary	17
A.1	Status	17
A.2	Comments	17

1 Front

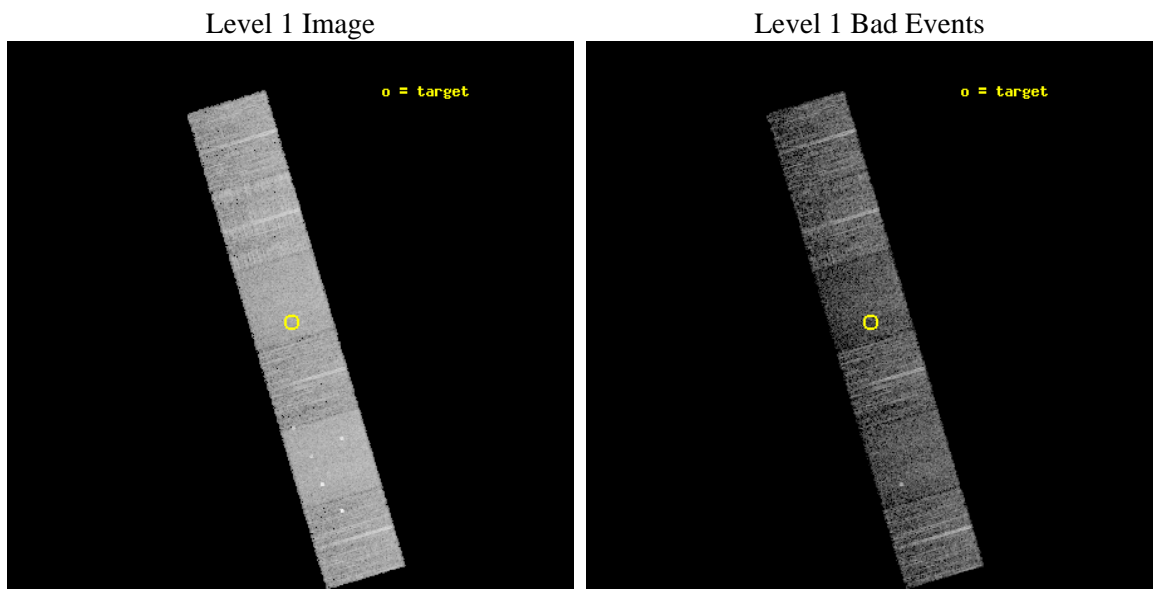
seq_num	600883	Sequence number
obs_id	11364	Observation id
title	Accretion onto nuclear black holes in early type galaxies: comparing field vs. clusters	Proposal title
observer	Elena Gallo	Principal investigator
object	NGC3457	Source name
dtcycle	0	
cycle	P	events from which exps? Prim/Second/Both
ra_targ	163.703	Observer's specified target RA [deg]
dec_targ	17.62039	Observer's specified target Dec [deg]
ra_nom	163.7043087818	Nominal RA [deg]
dec_nom	17.615588043711	Nominal Dec [deg]
roll_nom	253.41792413701	Nominal Roll [deg]
revision	2	Processing version of data
ontime	5244.7643901706	Sum of GTIs [s]
liveltime	5178.3520254443	Livetime [s]
ontime4	5244.7999805212	Sum of GTIs [s]
ontime5	5244.7233501673	Sum of GTIs [s]
ontime6	5244.682310164	Sum of GTIs [s]
ontime7	5244.7643901706	Sum of GTIs [s]
ontime8	5244.6412701607	Sum of GTIs [s]
ontime9	5244.6002301574	Sum of GTIs [s]
l2events	64116	Number of level 2 events



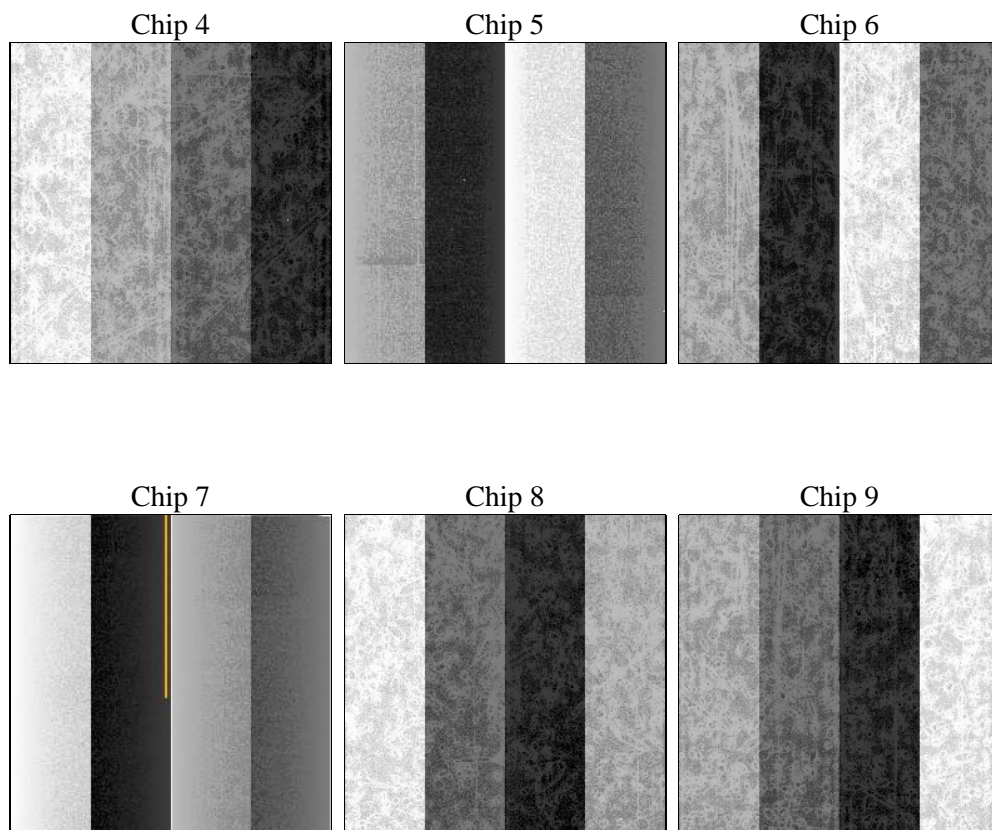
2 OBI

2.1 OBI

2.1.1 Images



2.1.2 Bias



2.1.3 Parameters

obi_num	0	Obi number	sched_exp_time	5200.000000	[s] Scheduled observation exposure time
ascdsver	8.4.5	Processing system revision	ontime	5244.7643901706	Sum of GTIs [s]
caldsver	4.5.0	 	ontime4	5244.7999805212	Sum of GTIs [s]
date	2012-06-29T09:46:29	Date and time of file creation	ontime5	5244.7233501673	Sum of GTIs [s]
revision	2	Processing version of data	ontime6	5244.682310164	Sum of GTIs [s]
			ontime7	5244.7643901706	Sum of GTIs [s]
			ontime8	5244.6412701607	Sum of GTIs [s]
			ontime9	5244.6002301574	Sum of GTIs [s]
			l1events	280795	Number of level 1 events

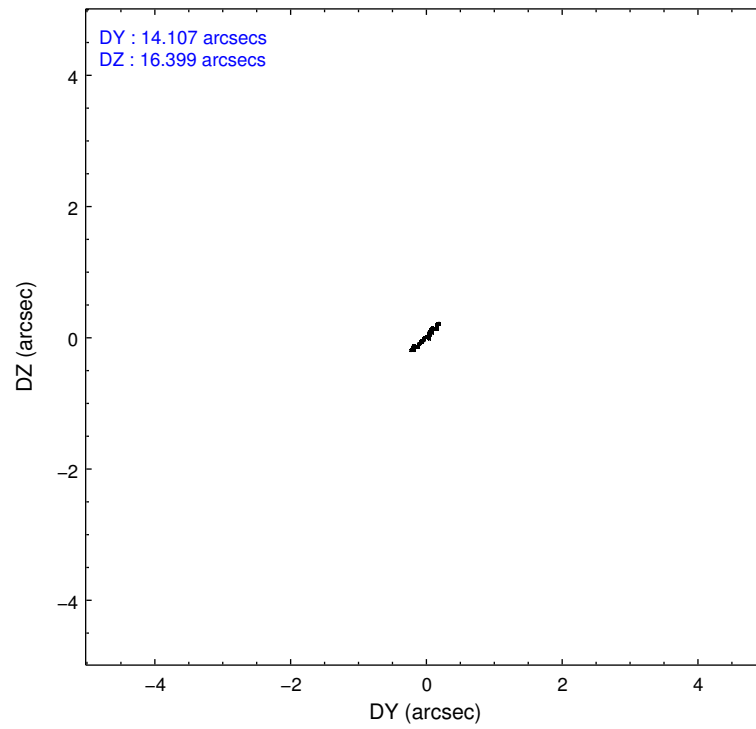
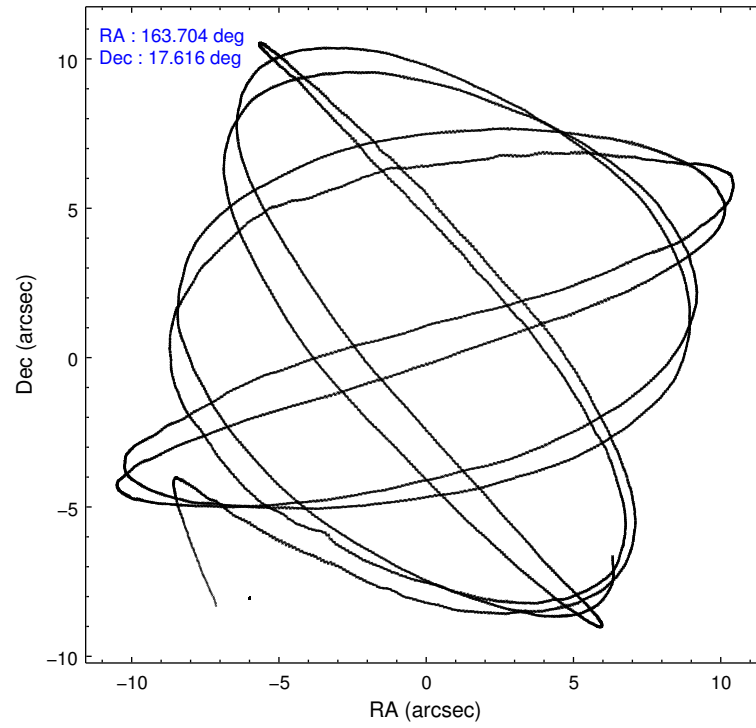
2.1.4 Events

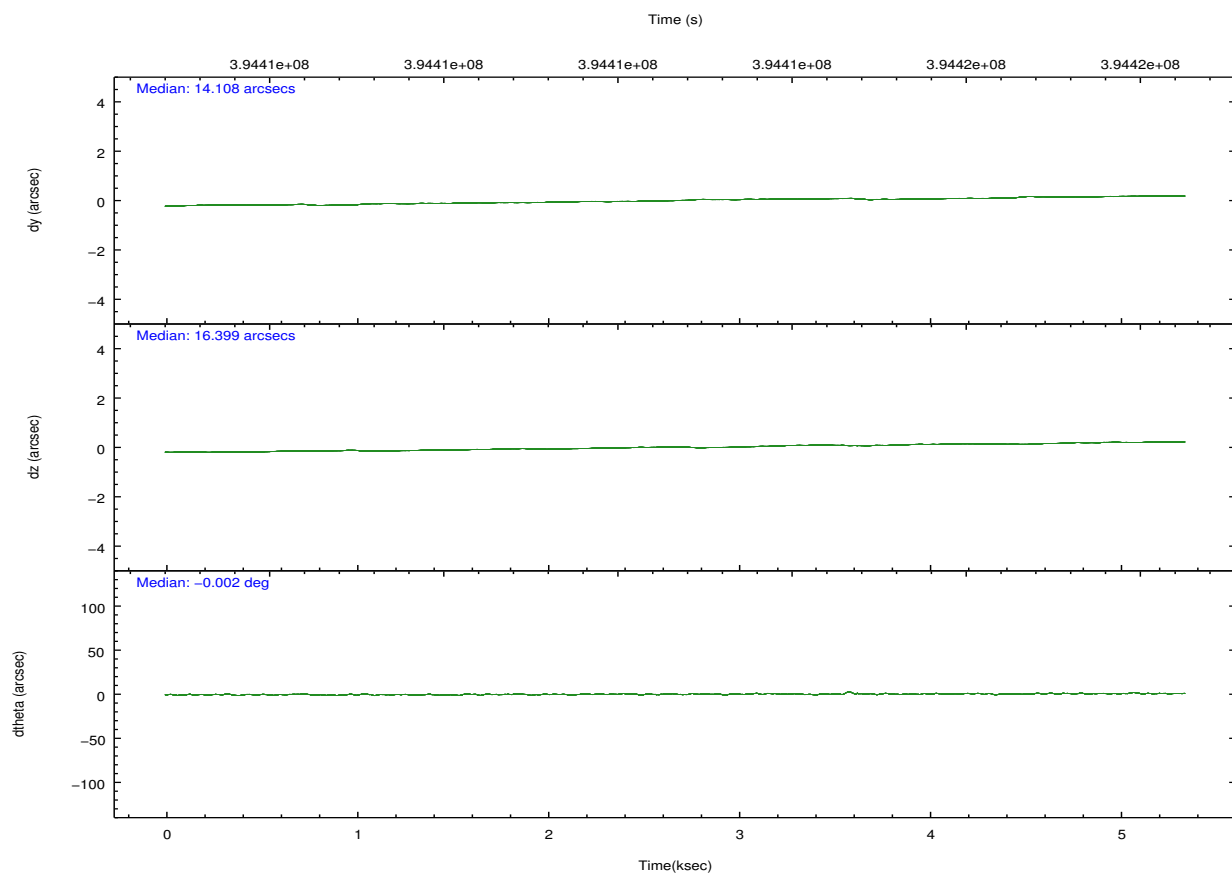
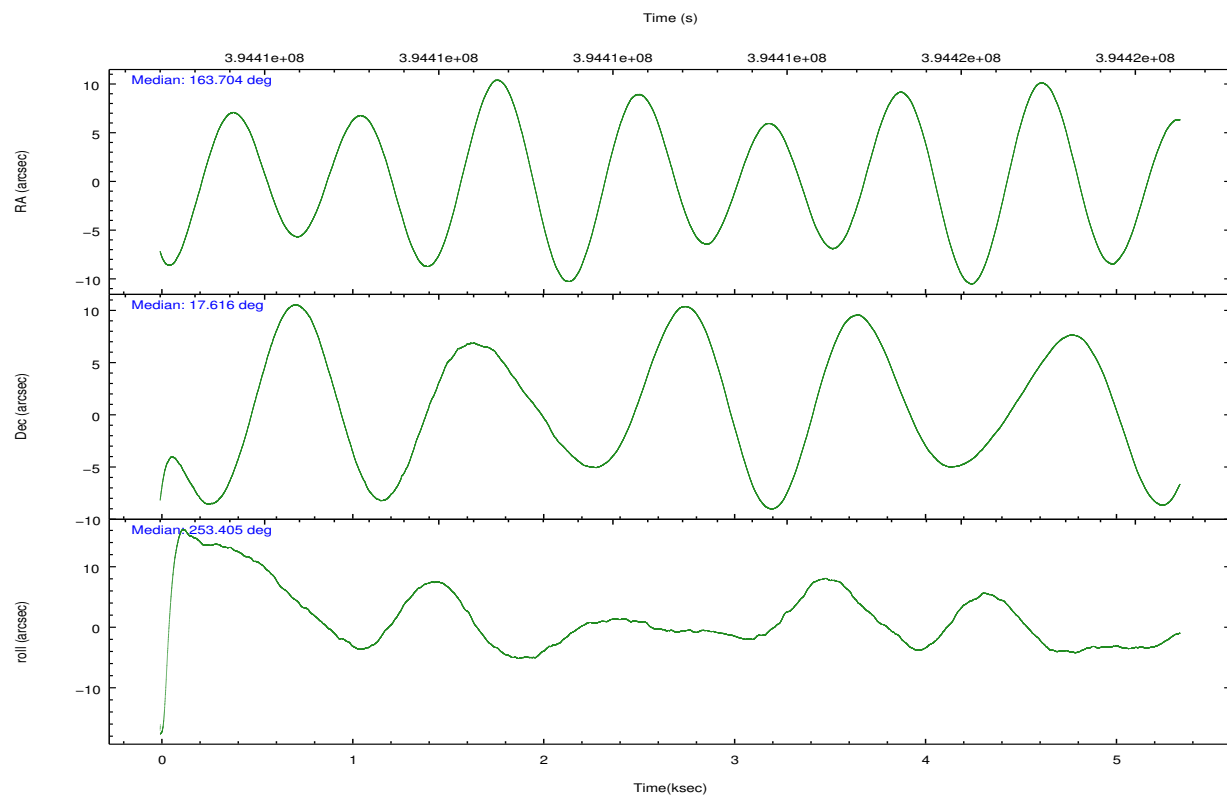
	ccd 4	ccd 5	ccd 6	ccd 7	ccd 8	ccd 9		ccd 4	ccd 5	ccd 6	ccd 7	ccd 8	ccd 9
level 1 events	45113	59828	38914	46510	51437	38993	grade 0 events	2962	2888	1467	1974	4242	1723
rejected events	39293	30062	34667	25293	37508	34364		6%	4%	3%	4%	8%	4%
rejected %	87%	50%	89%	54%	72%	88%	grade 1 events	45	140	22	58	40	30
								0%	0%	0%	0%	0%	0%
							grade 2 events	1160	9107	949	4268	3223	966
								2%	15%	2%	9%	6%	2%
							grade 3 events	488	1235	454	1910	1376	485
								1%	2%	1%	4%	2%	1%
							grade 4 events	431	1085	427	1892	1334	445
								0%	1%	1%	4%	2%	1%
							grade 5 events	1754	4671	1705	4892	2547	1839
								3%	7%	4%	10%	4%	4%
							grade 6 events	787	15481	956	11182	3777	1018
								1%	25%	2%	24%	7%	2%
							grade 7 events	37486	25221	32934	20334	34898	32487
								83%	42%	84%	43%	67%	83%

2.2 Compared Parameters

Parameter	Planned	Actual	Parameter	Planned	Actual
Instrument	ACIS	ACIS	Obspar format version number	7	7
Detector	ACIS-456789	ACIS-456789	Obspar file type	PREDICTED	ACTUAL
Grating	NONE	NONE	Obspar update status	NONE	UPDATED
Data mode	VFAINT	VFAINT	CCD I0 on	N	N
Observation mode	POINTING	POINTING	CCD I1 on	N	N
[deg] Pointing RA	163.697285	163.7043087817992	CCD I2 on	N	N
[deg] Pointing Dec	17.642218	17.61558804371059	CCD I3 on	N	N
[deg] Pointing Roll	253.263520	253.4179241370146	CCD S0 on	O1	Y
[mm] SIM focus pos	-0.684267	-0.6828225247311905	CCD S1 on	Y	Y
[mm] SIM defocus	0	0.001444936568705701	CCD S2 on	Y	Y
[mm] SIM translation stage pos	-190.132523	-190.1425803651734	CCD S3 on	Y	Y
[mm] SIM translation stage offset	0	0.01005778216563158	CCD S4 on	Y	Y
[s] Observation start time (MET)	394410788.184000	394409470.96016	CCD S5 on	O2	Y
Observation start date	2010-07-01T22:32:02	2010-07-01T22:11:10	Number of optional ACIS chips dropped	0	0
[s] Observation end time (MET)	394415988.184000	394416969.86054	On-chip summing requested	N	N
Observation end date	2010-07-01T23:58:42	2010-07-02T00:16:09	Subarray requested	NONE	NONE
Read mode	TIMED	TIMED	Alternating exposures requested	N	N
			[s] Primary exposure time	0.000000	3.2

2.3 Aspect



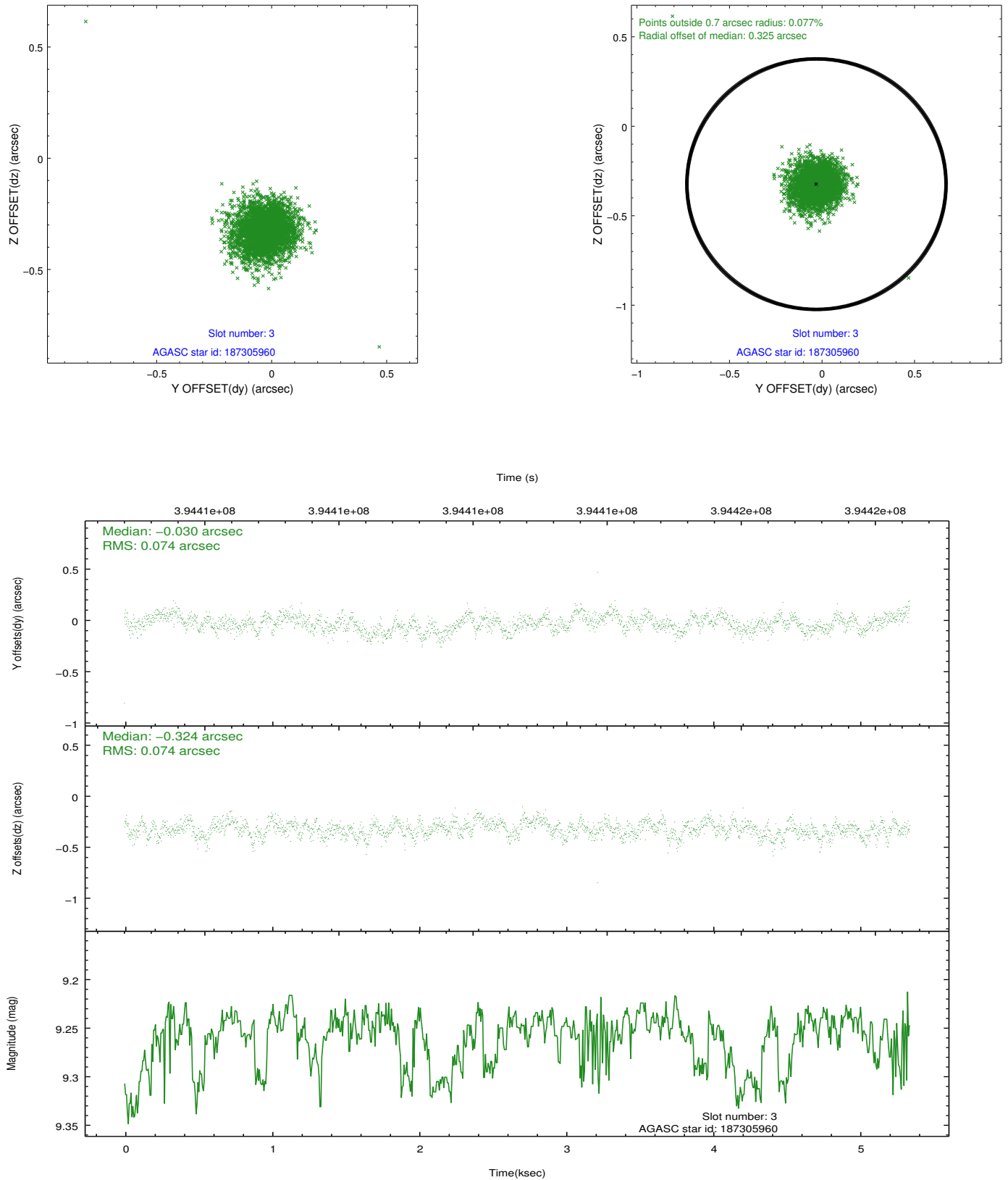


Slot Statistics

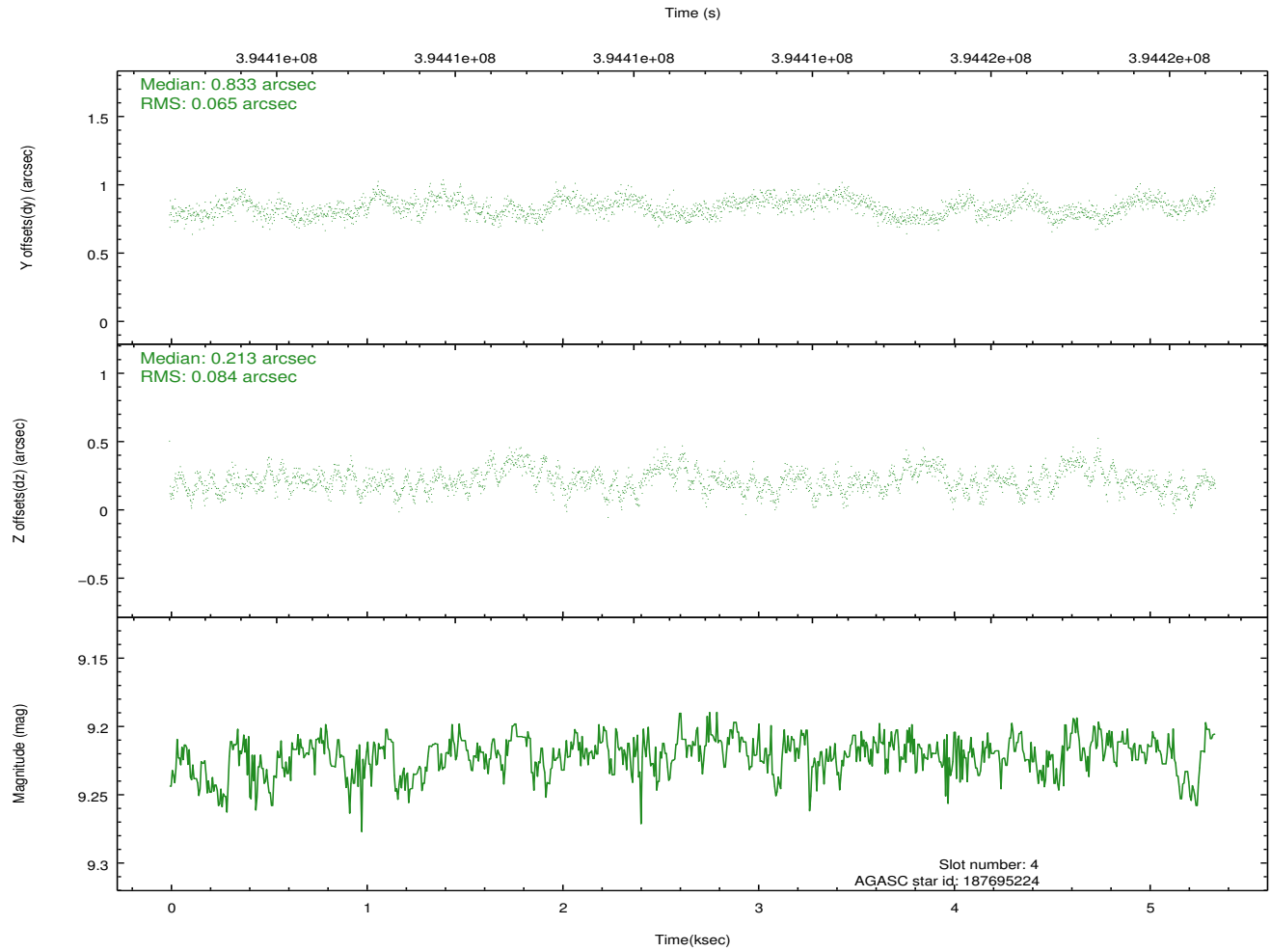
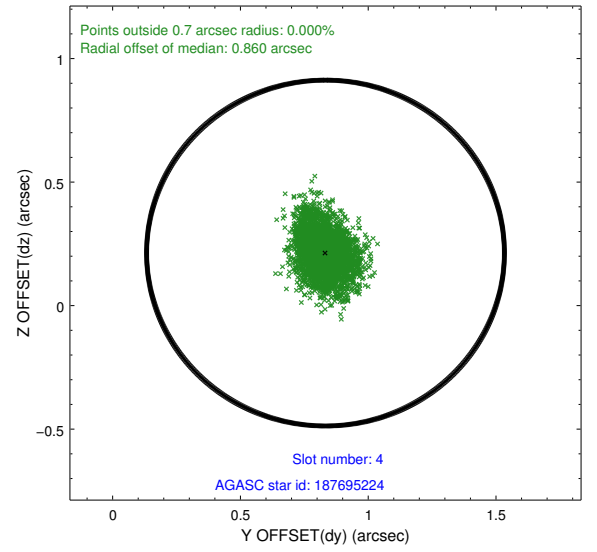
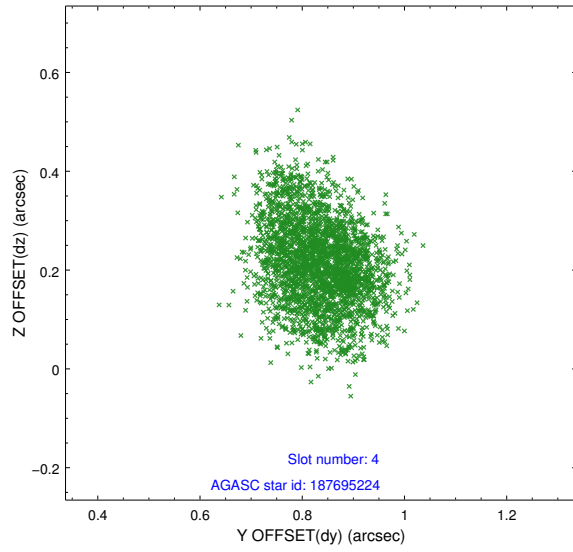
slot	status	id	mag	n_pts	med_dy	med_dz	dr1	dr2	ra	dec	mean_y	mean_z
0	FID	ACIS-S-2	6.88	1303	-0.097	-0.058	0.006	0.009	0.000000	0.000000	-767.18	-1737.80
1	FID	ACIS-S-4	6.97	1303	0.107	0.051	0.006	0.009	0.000000	0.000000	2145.83	169.54
2	FID	ACIS-S-6	7.10	1303	-0.039	0.015	0.007	0.012	0.000000	0.000000	396.37	808.23
3	GUIDE	187305960	9.26	2604	-0.030	-0.324	0.108	0.172	164.180611	17.346578	538.62	1896.69
4	GUIDE	187695224	9.22	2603	0.833	0.213	0.113	0.183	163.359283	18.065077	-1124.32	-1545.27
5	GUIDE	187699256	9.44	2596	-0.438	0.107	0.107	0.172	163.227970	18.290733	-1776.19	-2209.52
6	GUIDE	187700480	9.08	2600	-0.027	0.083	0.107	0.170	164.425294	17.942889	-1760.34	2073.92
7	GUIDE	187701080	7.18	2606	-0.345	-0.084	0.088	0.136	163.983718	18.152990	-2044.92	408.85

2.4 Star Slots

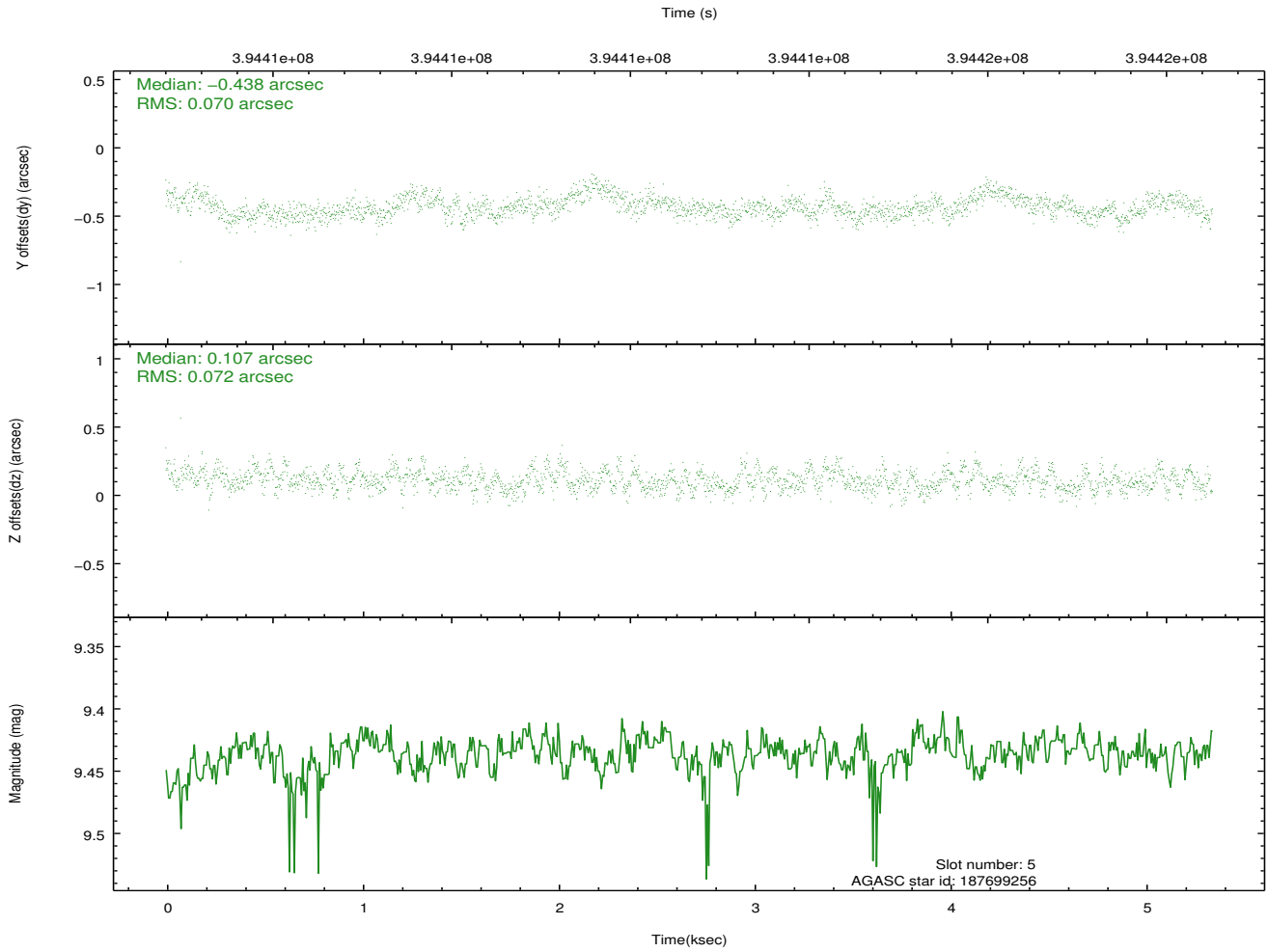
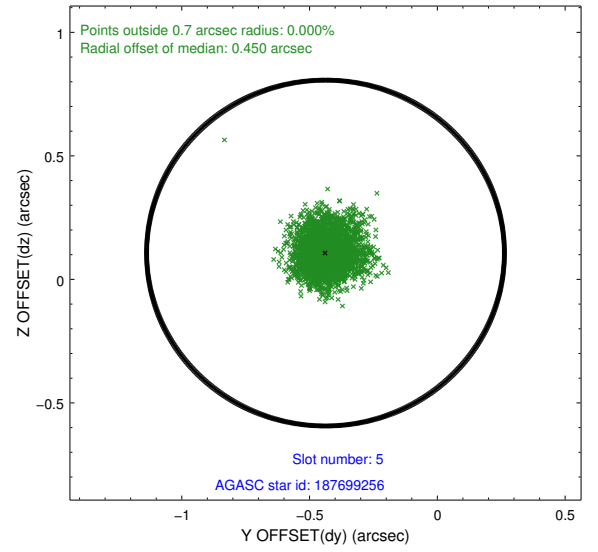
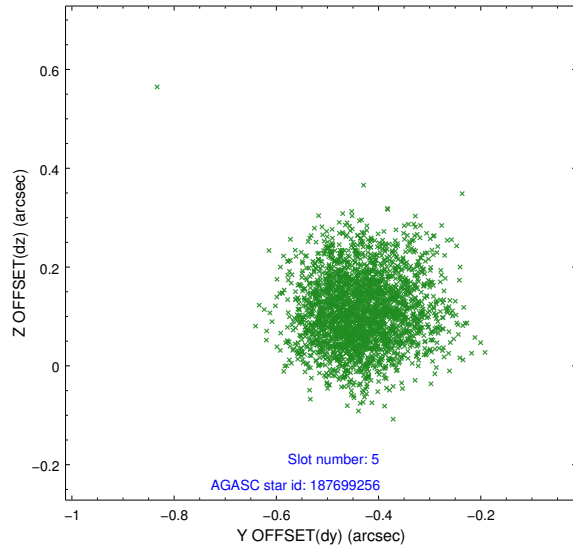
2.4.1 Slot 3



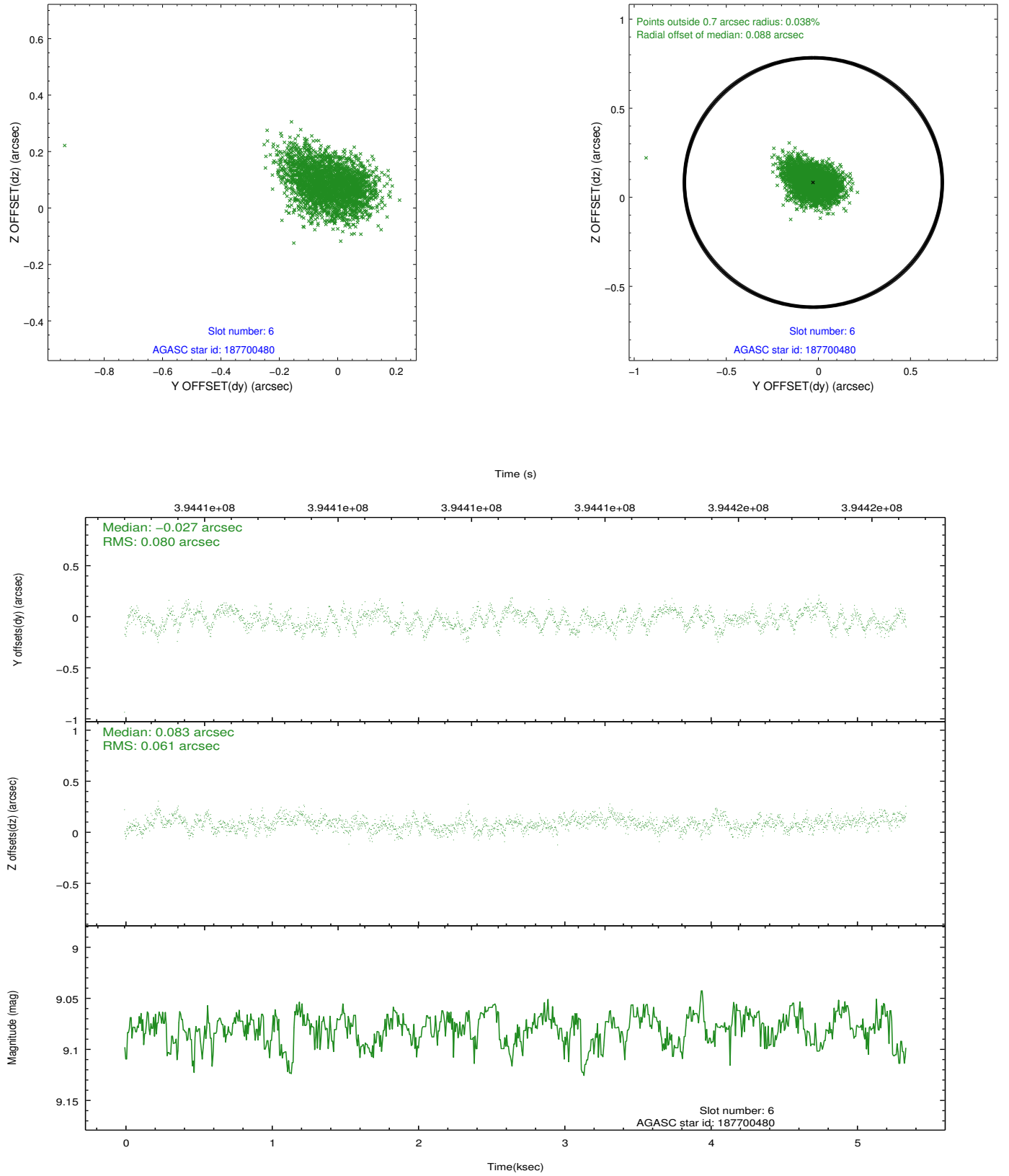
2.4.2 Slot 4



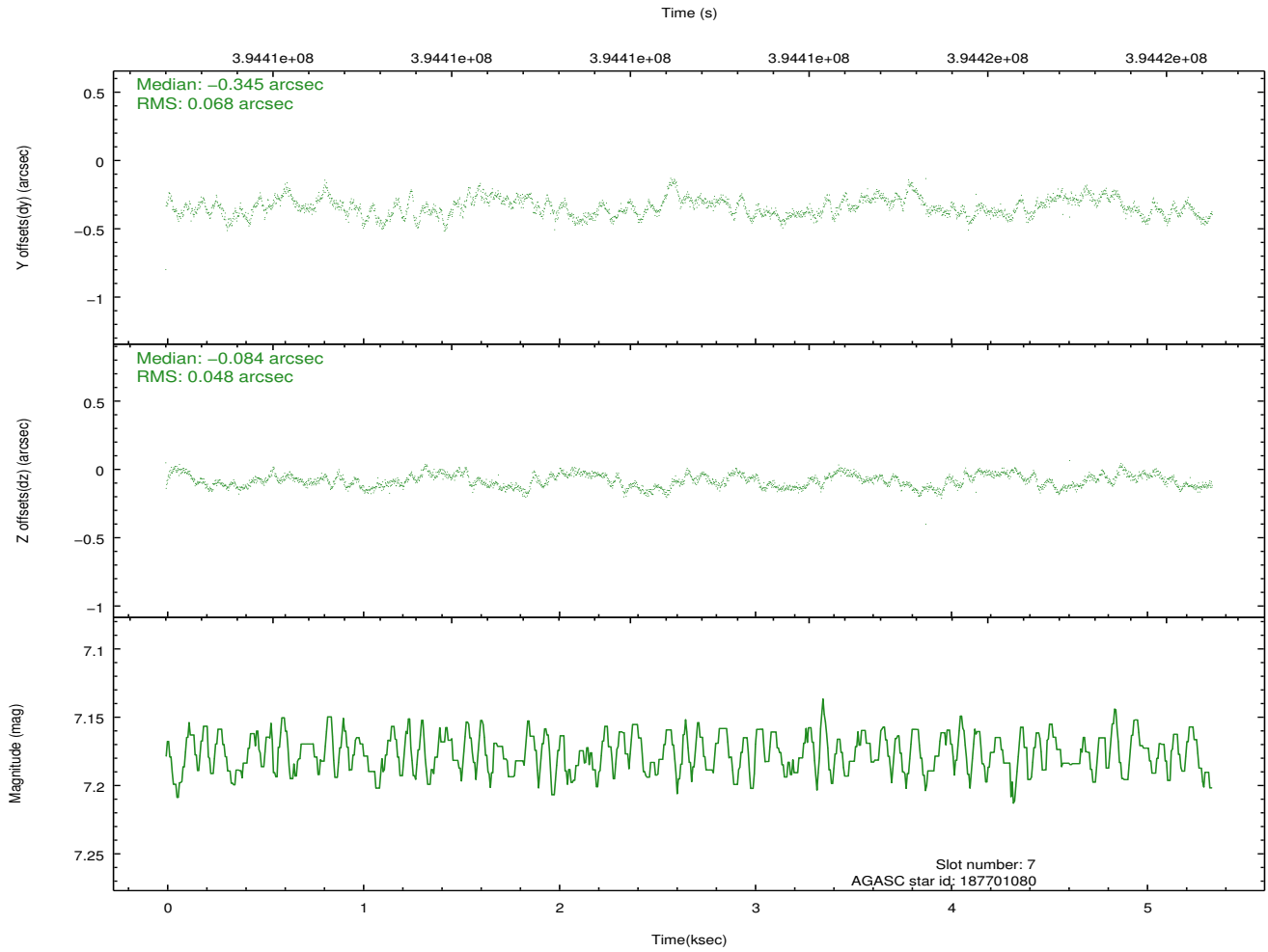
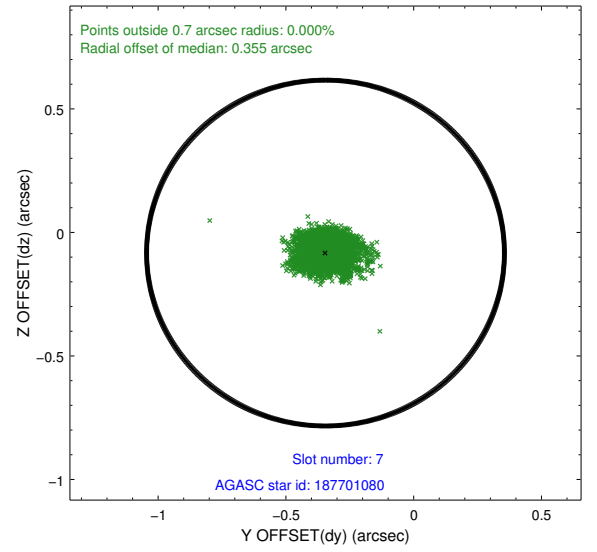
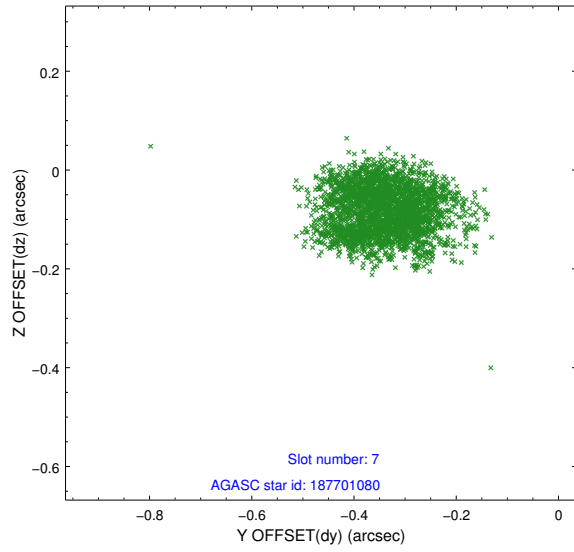
2.4.3 Slot 5



2.4.4 Slot 6

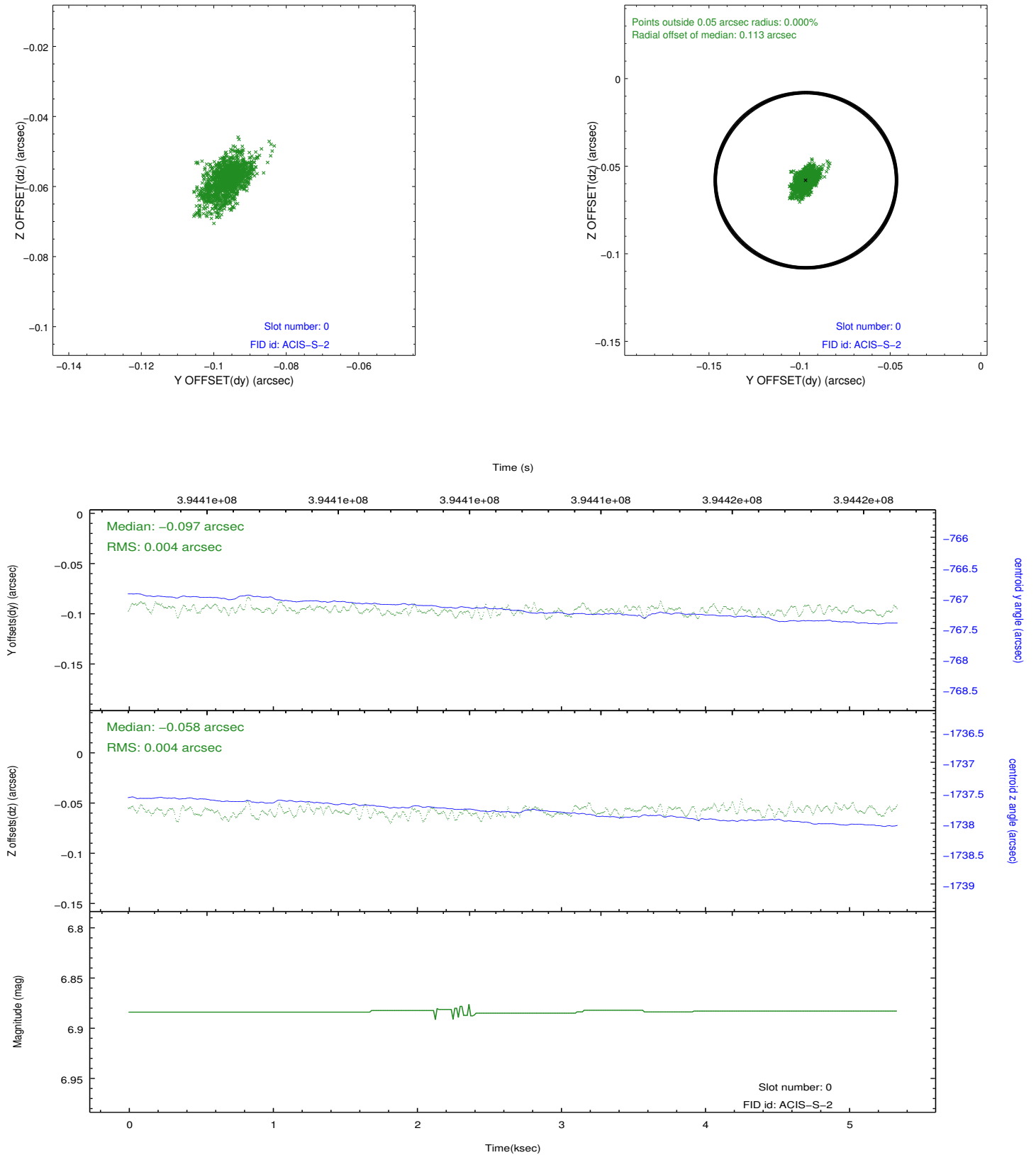


2.4.5 Slot 7

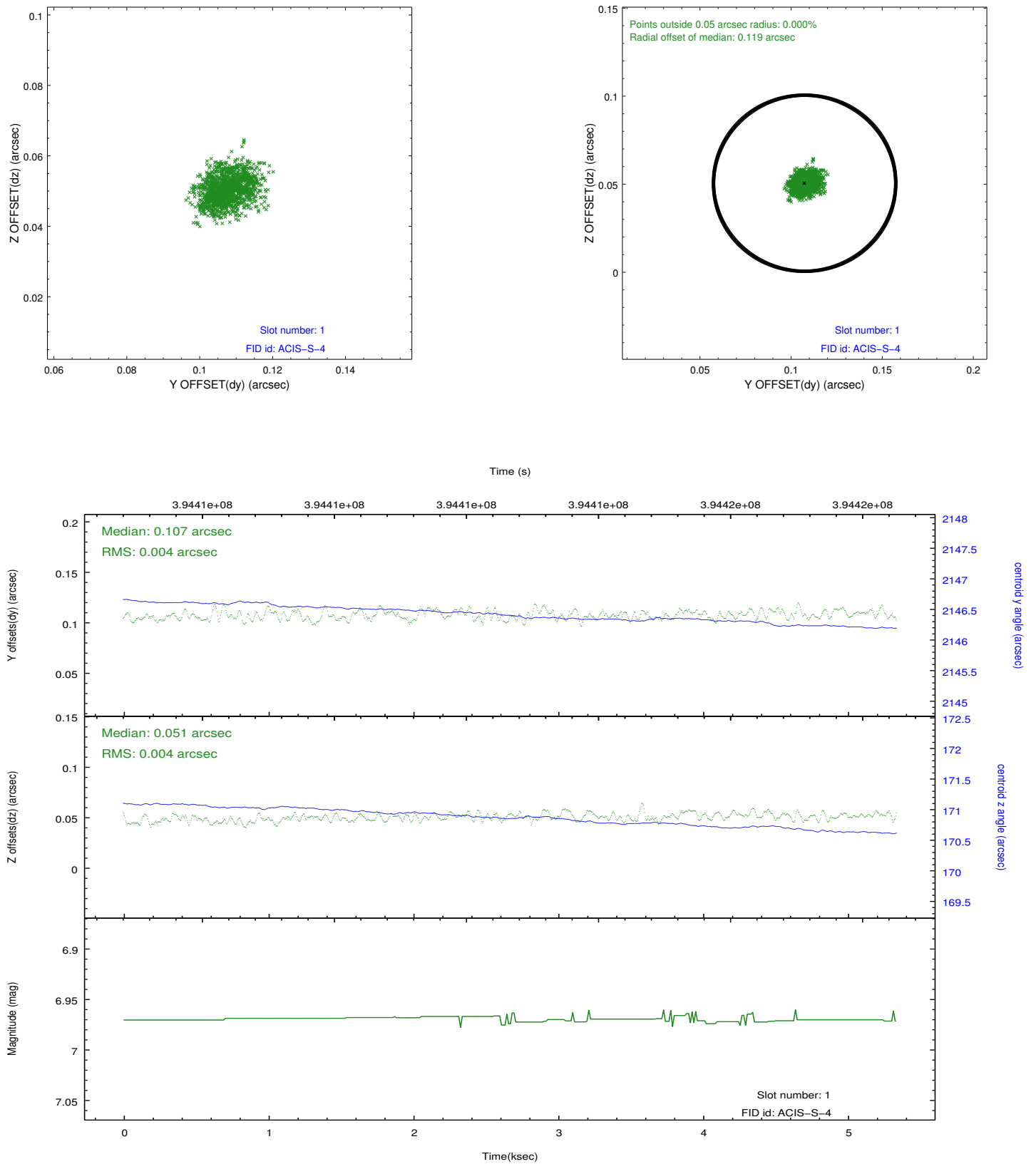


2.5 FID Slots

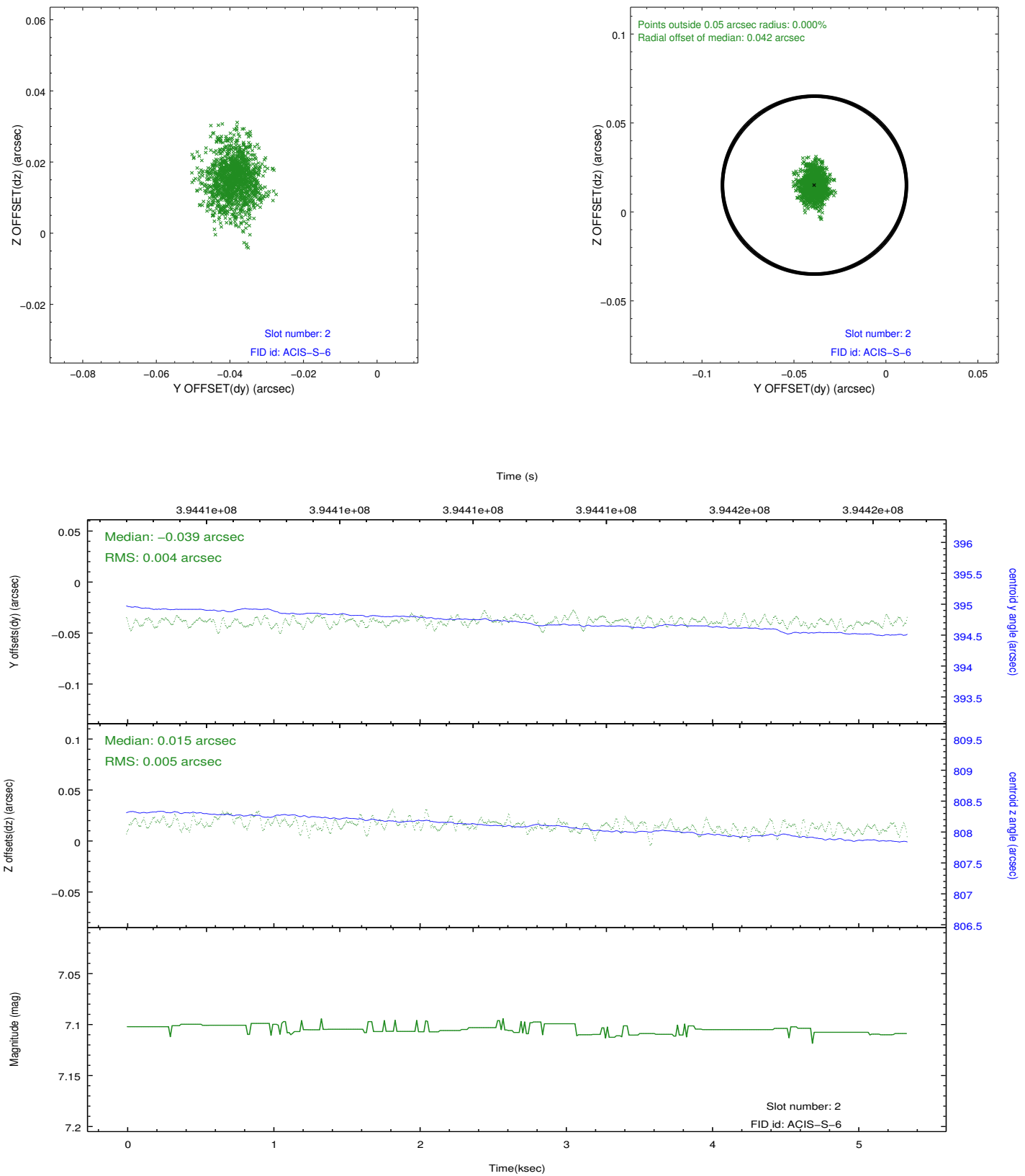
2.5.1 Slot 0



2.5.2 Slot 1



2.5.3 Slot 2



A Summary

A.1 Status

V&V Scientist	Jen Lauer
V&V Date (YYYY-MM-DD)	2012.07.06
V&V Edition	1
V&V Disposition and Status	OK
V&V Charge Time	5.2447643879056

A.2 Comments