

V&V Reference Report

L2 ASCDS Version : 8.4.5

Observation 11353 - L2 Version 2
Chandra X-Ray Center

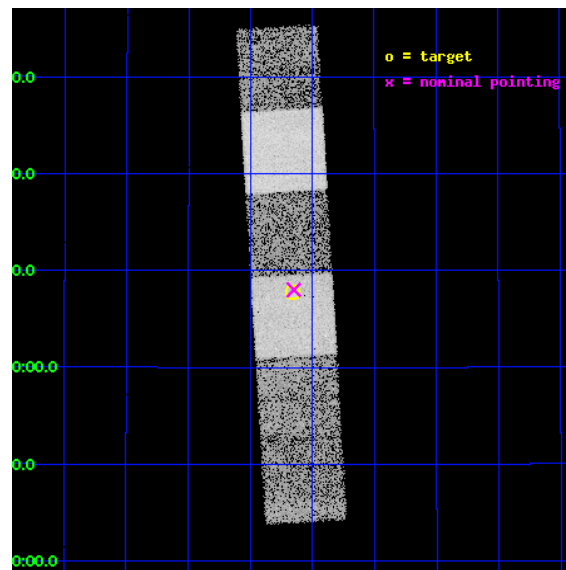
L2 Processing Date : Jun 25 2012

Contents

1	Front	2
2	OBI	3
2.1	OBI	3
2.1.1	Images	3
2.1.2	Bias	3
2.1.3	Parameters	4
2.1.4	Events	4
2.2	Compared Parameters	5
2.3	Aspect	6
2.4	Star Slots	9
2.4.1	Slot 3	9
2.4.2	Slot 4	10
2.4.3	Slot 5	11
2.4.4	Slot 6	12
2.4.5	Slot 7	13
2.5	FID Slots	14
2.5.1	Slot 0	14
2.5.2	Slot 1	15
2.5.3	Slot 2	16
A	Summary	17
A.1	Status	17
A.2	Comments	17

1 Front

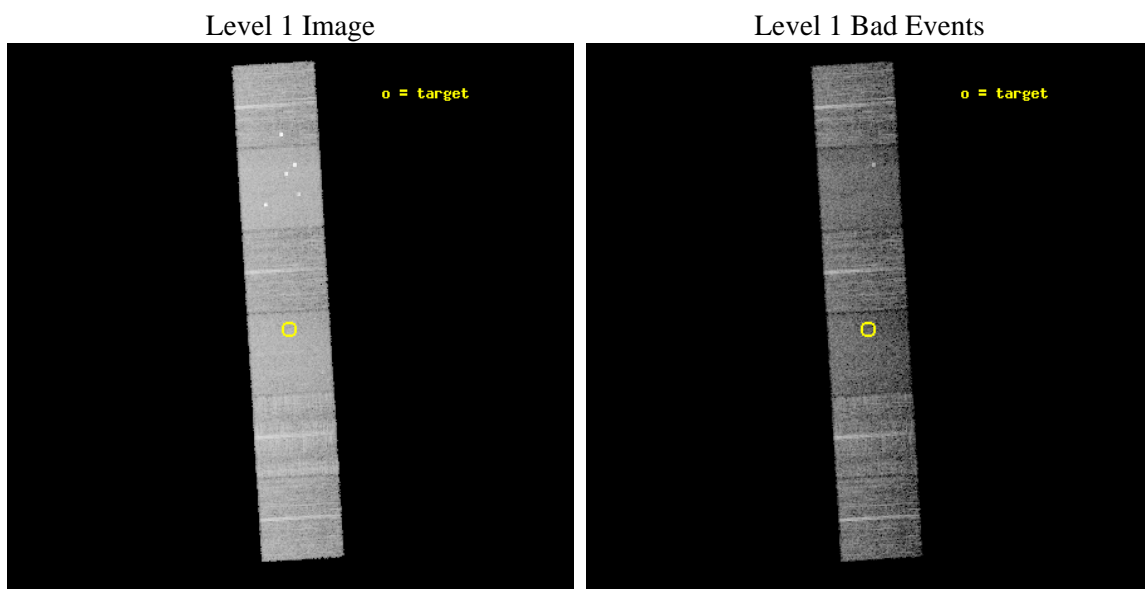
seq_num	600872	Sequence number
obs_id	11353	Observation id
title	Accretion onto nuclear black holes in early type galaxies: comparing field vs. clusters	Proposal title
observer	Elena Gallo	Principal investigator
object	PGC071938	Source name
dtcycle	0	
cycle	P	events from which exps? Prim/Second/Both
ra_targ	354.415	Observer's specified target RA [deg]
dec_targ	30.12941	Observer's specified target Dec [deg]
ra_nom	354.41232971041	Nominal RA [deg]
dec_nom	30.133681592667	Nominal Dec [deg]
roll_nom	86.498237001418	Nominal Roll [deg]
revision	2	Processing version of data
ontime	7945.5999704599	Sum of GTIs [s]
livetime	7844.9879993681	Livetime [s]
ontime4	7945.5999704599	Sum of GTIs [s]
ontime5	7945.5999704599	Sum of GTIs [s]
ontime6	7942.3590001464	Sum of GTIs [s]
ontime7	7945.5999704599	Sum of GTIs [s]
ontime8	7942.3589801788	Sum of GTIs [s]
ontime9	7945.5999704599	Sum of GTIs [s]
l2events	96649	Number of level 2 events



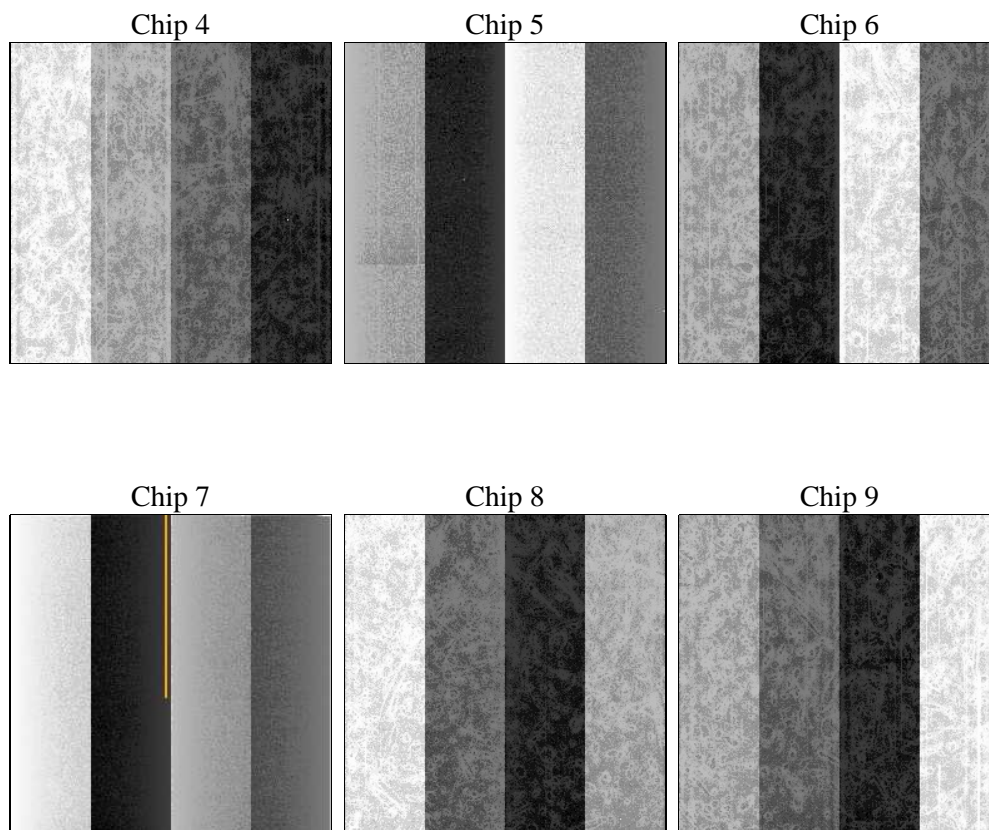
2 OBI

2.1 OBI

2.1.1 Images



2.1.2 Bias



2.1.3 Parameters

obi_num	0	Obi number	sched_exp_time	7800.000000	[s] Scheduled observation exposure time
ascdsver	8.4.5	Processing system revision	ontime	7945.5999704599	Sum of GTIs [s]
caldsver	4.4.10	 	ontime4	7945.5999704599	Sum of GTIs [s]
date	2012-06-25T09:52:22	Date and time of file creation	ontime5	7945.5999704599	Sum of GTIs [s]
revision	2	Processing version of data	ontime6	7942.3590001464	Sum of GTIs [s]
			ontime7	7945.5999704599	Sum of GTIs [s]
			ontime8	7942.3589801788	Sum of GTIs [s]
			ontime9	7945.5999704599	Sum of GTIs [s]
			l1events	460673	Number of level 1 events

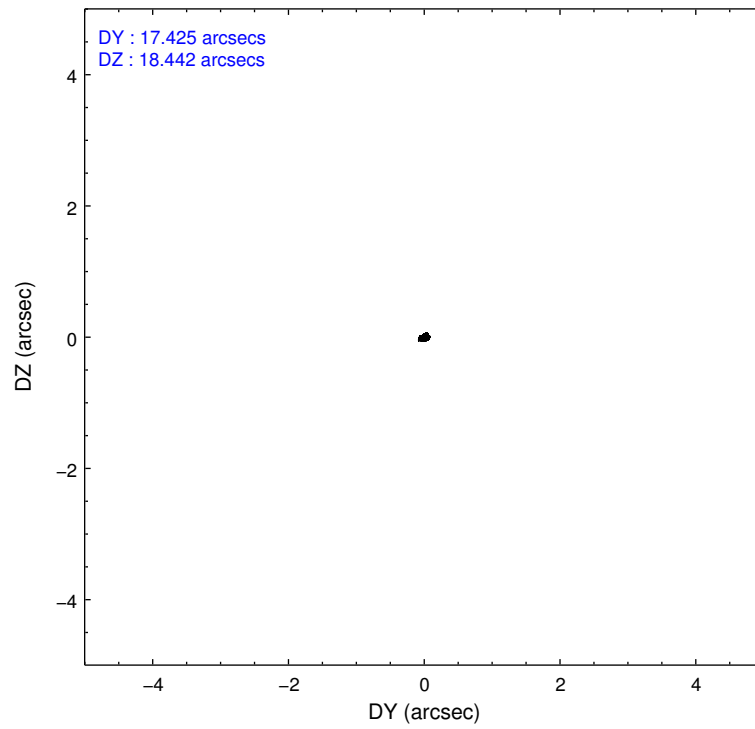
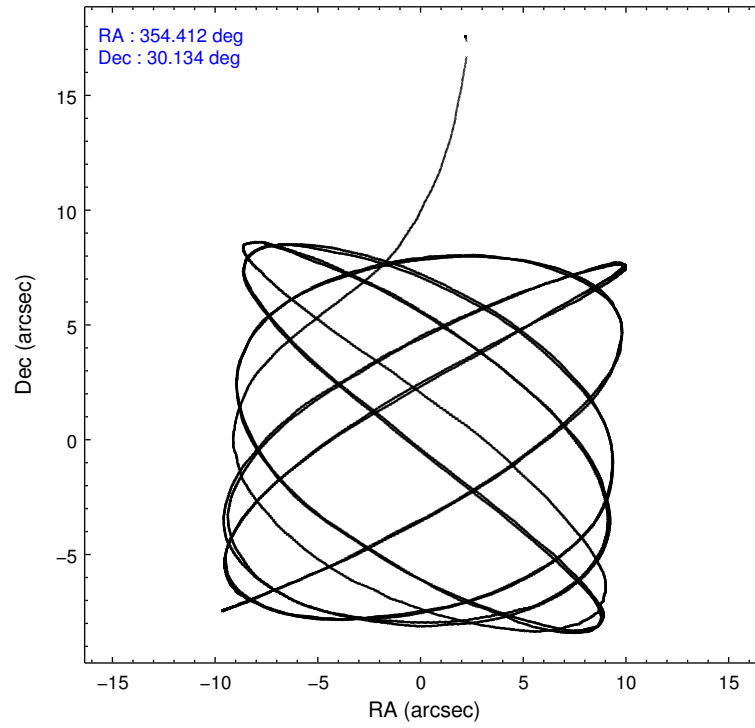
2.1.4 Events

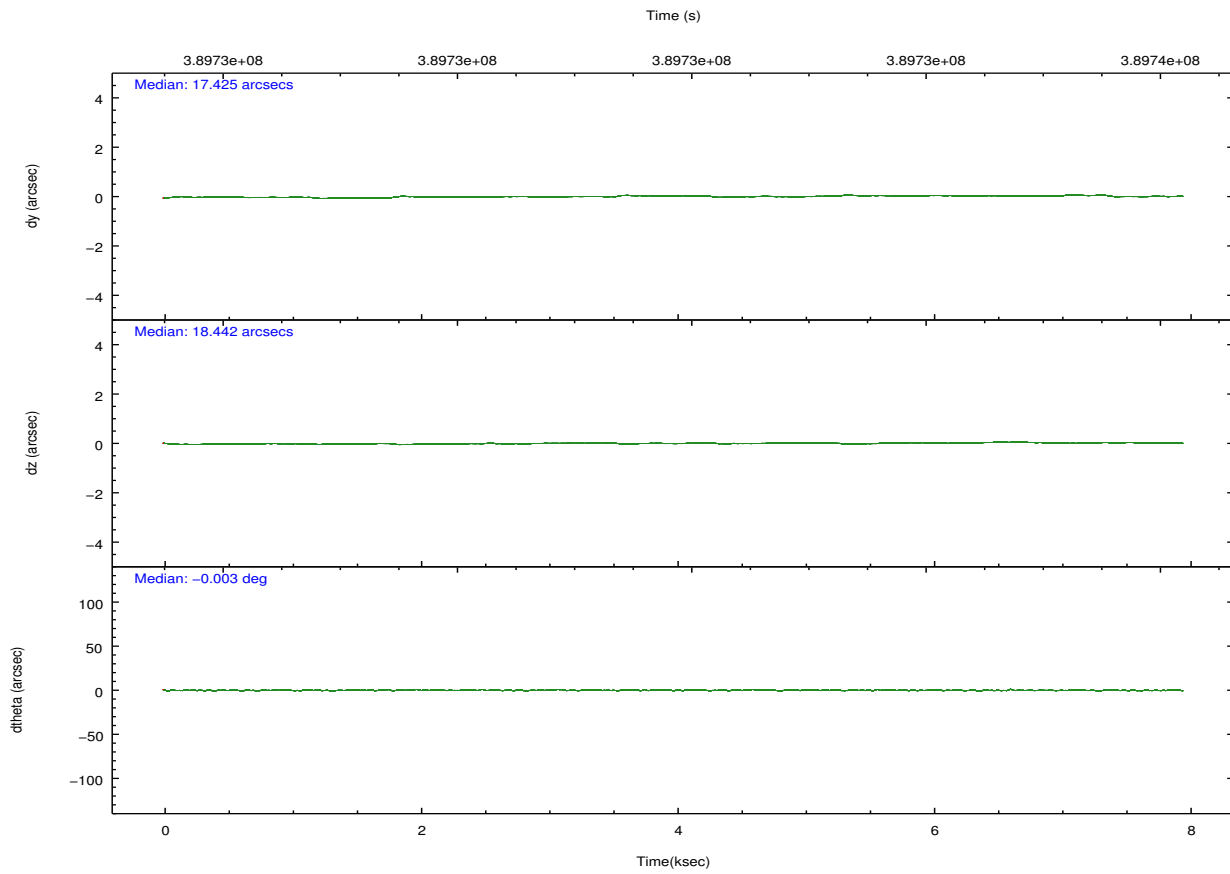
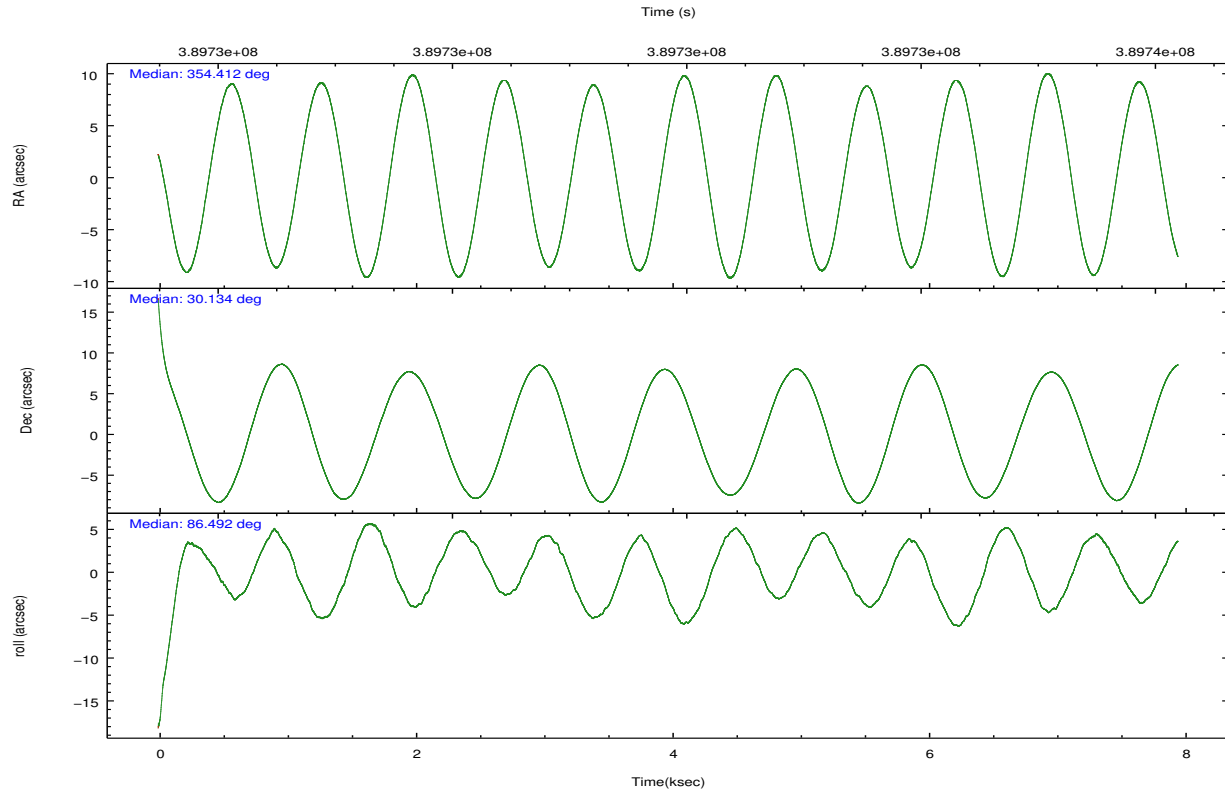
	ccd 4	ccd 5	ccd 6	ccd 7	ccd 8	ccd 9		ccd 4	ccd 5	ccd 6	ccd 7	ccd 8	ccd 9
level 1 events	73417	98538	64613	77857	85149	61099	grade 0 events	4927	6393	2410	3254	6665	2672
rejected events	64453	53098	58085	45244	64330	54153		6%	6%	3%	4%	7%	4%
rejected %	87%	53%	89%	58%	75%	88%	grade 1 events	77	201	31	106	63	36
								0%	0%	0%	0%	0%	0%
							grade 2 events	1854	14669	1538	7285	5081	1622
								2%	14%	2%	9%	5%	2%
							grade 3 events	807	1786	717	3216	2364	878
								1%	1%	1%	4%	2%	1%
							grade 4 events	813	1809	801	3219	2208	780
								1%	1%	1%	4%	2%	1%
							grade 5 events	2809	7457	2936	8124	4201	3095
								3%	7%	4%	10%	4%	5%
							grade 6 events	1300	24597	1632	18330	5957	1566
								1%	24%	2%	23%	6%	2%
							grade 7 events	60830	41626	54548	34323	58610	50450
								82%	42%	84%	44%	68%	82%

2.2 Compared Parameters

Parameter	Planned	Actual	Parameter	Planned	Actual
Instrument	ACIS	ACIS	Obspar format version number	7	7
Detector	ACIS-456789	ACIS-456789	Obspar file type	PREDICTED	ACTUAL
Grating	NONE	NONE	Obspar update status	NONE	UPDATED
Data mode	VFAINT	VFAINT	CCD I0 on	N	N
Observation mode	POINTING	POINTING	CCD I1 on	N	N
[deg] Pointing RA	354.426842	354.4123297104063	CCD I2 on	N	N
[deg] Pointing Dec	30.109382	30.13368159266658	CCD I3 on	N	N
[deg] Pointing Roll	86.334344	86.49823700141833	CCD S0 on	O1	Y
[mm] SIM focus pos	-0.684267	-0.6828225247311905	CCD S1 on	Y	Y
[mm] SIM defocus	0	0.001444936568705701	CCD S2 on	Y	Y
[mm] SIM translation stage pos	-190.132523	-190.1425803651734	CCD S3 on	Y	Y
[mm] SIM translation stage offset	0	0.01005778216563158	CCD S4 on	Y	Y
[s] Observation start time (MET)	389728009.184000	389726630.09649	CCD S5 on	O2	Y
Observation start date	2010-05-08T17:45:43	2010-05-08T17:23:50	Number of optional ACIS chips dropped	0	0
[s] Observation end time (MET)	389735809.184000	389736700.2095	On-chip summing requested	N	N
Observation end date	2010-05-08T19:55:43	2010-05-08T20:11:40	Subarray requested	NONE	NONE
Read mode	TIMED	TIMED	Alternating exposures requested	N	N
			[s] Primary exposure time	0.000000	3.2

2.3 Aspect



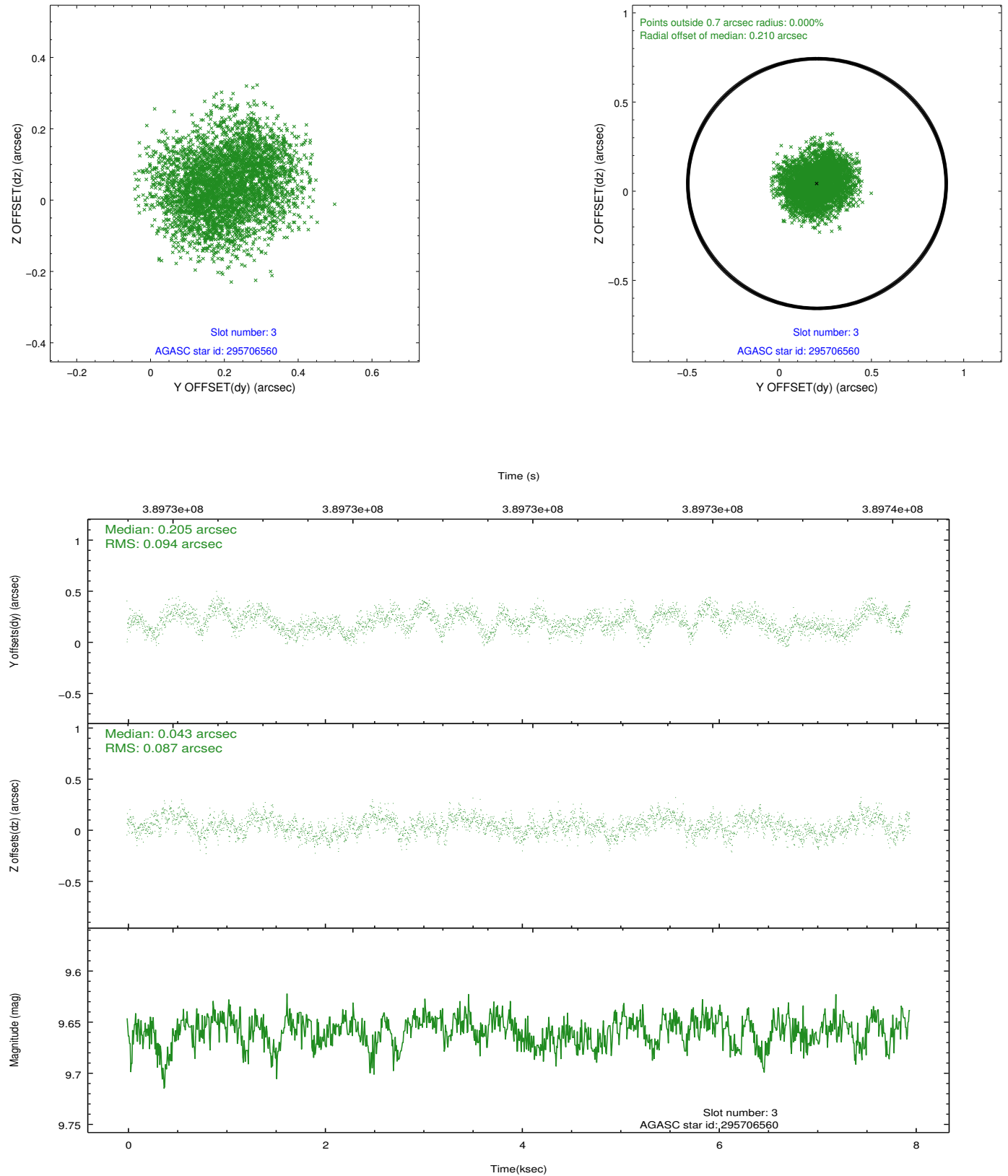


Slot Statistics

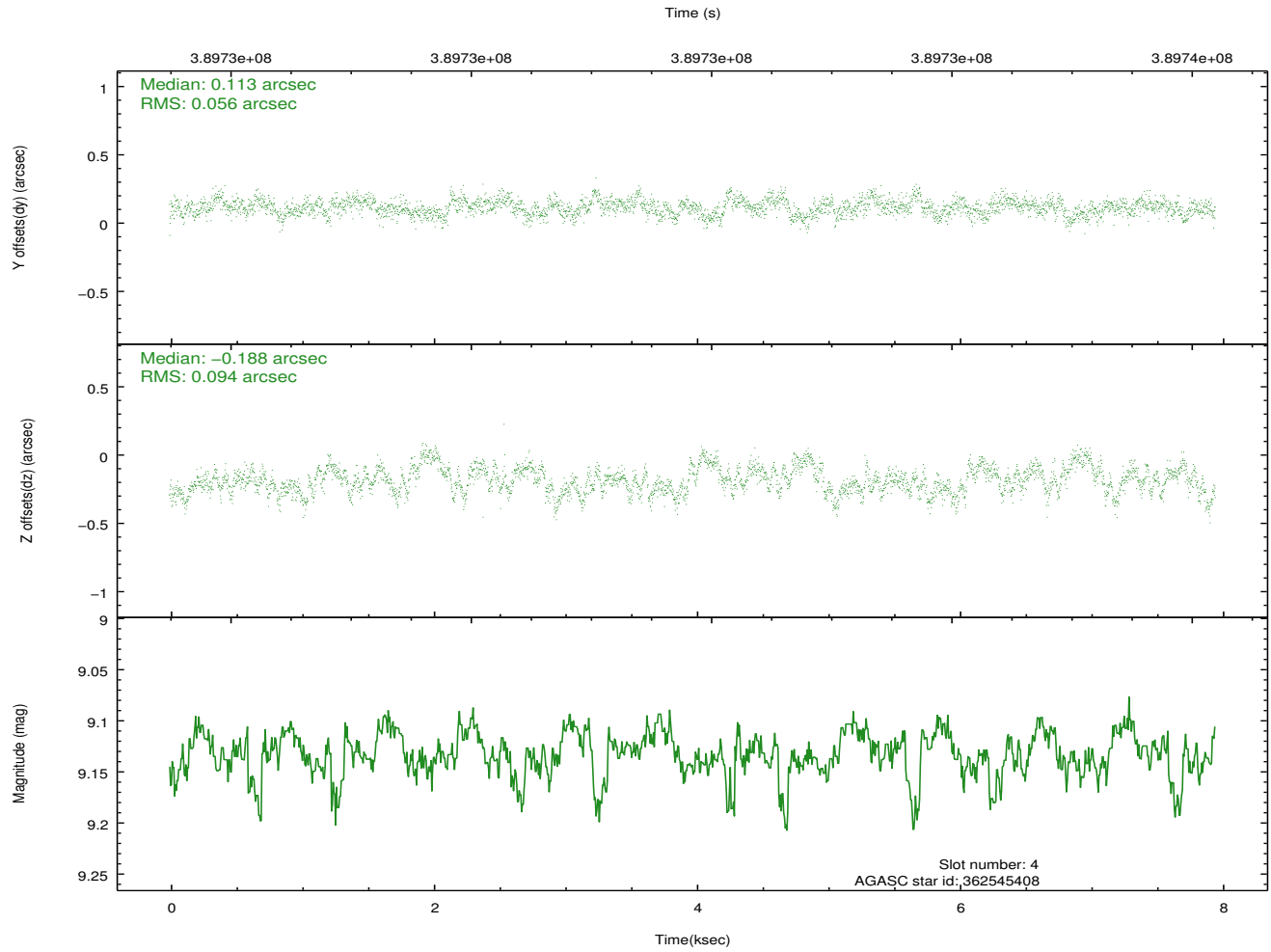
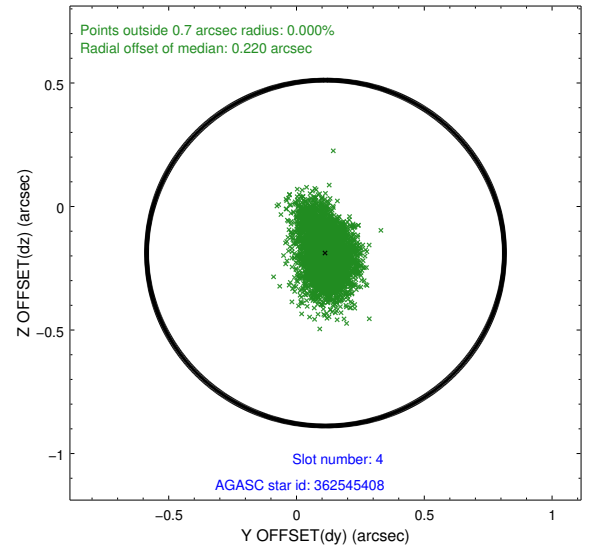
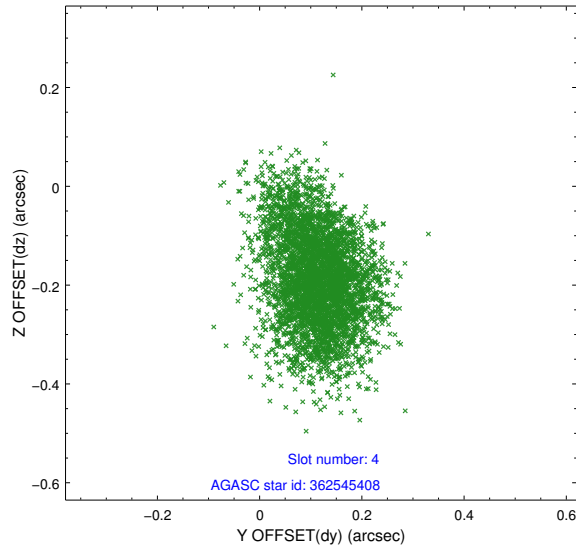
slot	status	id	mag	n_pts	med_dy	med_dz	dr1	dr2	ra	dec	mean_y	mean_z
0	FID	ACIS-S-2	6.87	1940	-0.053	-0.030	0.007	0.011	0.000000	0.000000	-770.55	-1739.88
1	FID	ACIS-S-4	6.95	1940	0.145	0.034	0.006	0.010	0.000000	0.000000	2142.64	167.88
2	FID	ACIS-S-5	6.98	1940	-0.123	0.005	0.006	0.010	0.000000	0.000000	-1822.52	162.40
3	GUIDE	295706560	9.66	3873	0.205	0.043	0.141	0.211	354.168094	29.992366	-470.53	777.53
4	GUIDE	362545408	9.13	3874	0.113	-0.188	0.115	0.193	353.714972	30.029722	-421.23	2196.30
5	GUIDE	362545552	8.73	3877	0.167	0.315	0.090	0.144	354.723091	30.059556	-119.01	-931.36
6	GUIDE	362550920	7.33	3880	-0.323	-0.048	0.073	0.110	354.277626	30.678026	2014.38	590.05
7	GUIDE	362553408	8.14	3879	-0.166	-0.123	0.072	0.111	353.693810	30.725835	2077.23	2406.30

2.4 Star Slots

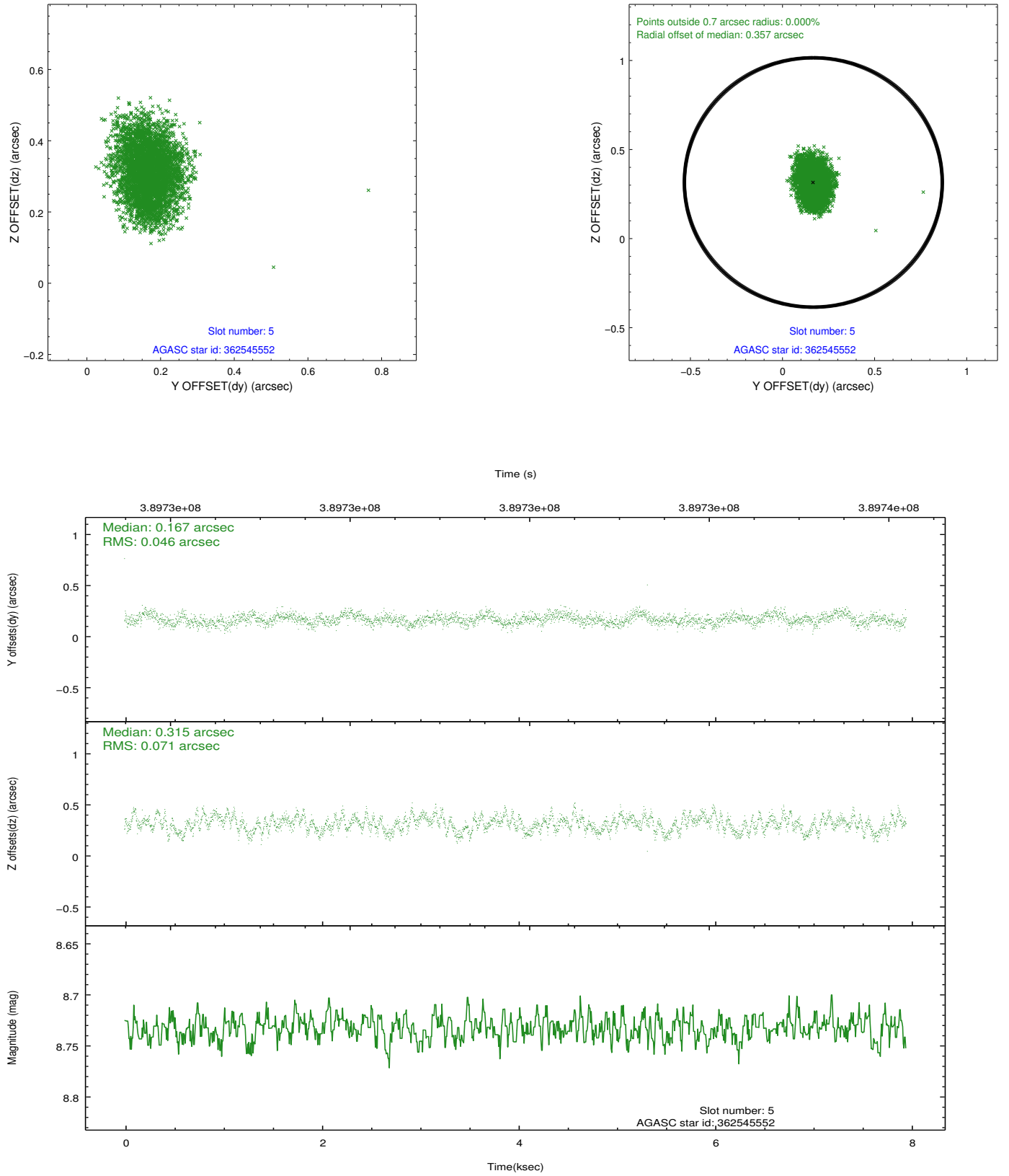
2.4.1 Slot 3



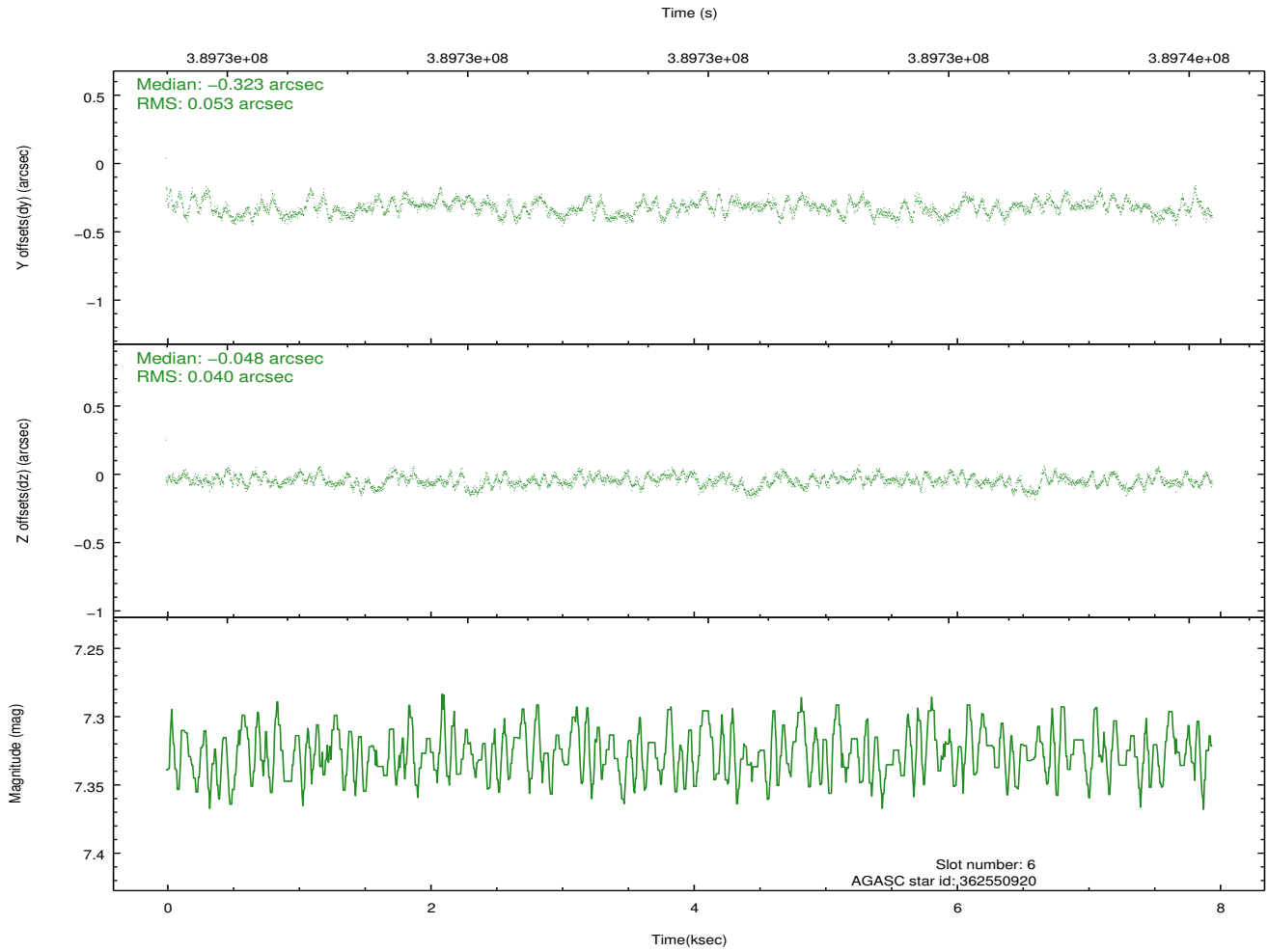
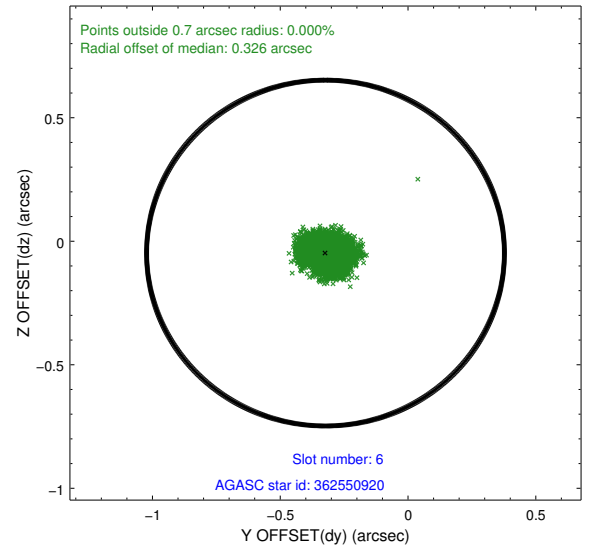
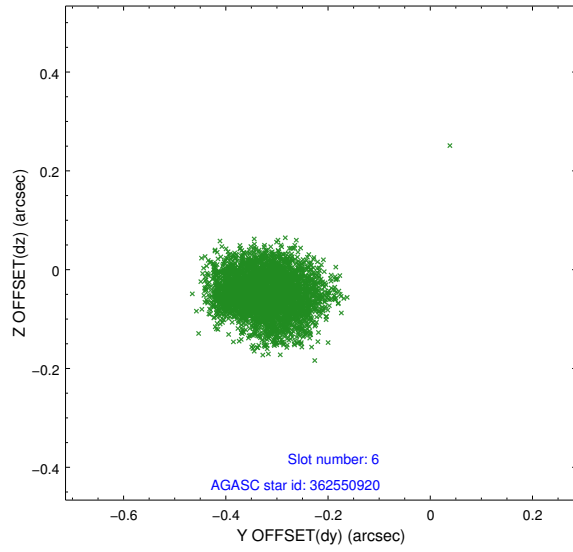
2.4.2 Slot 4



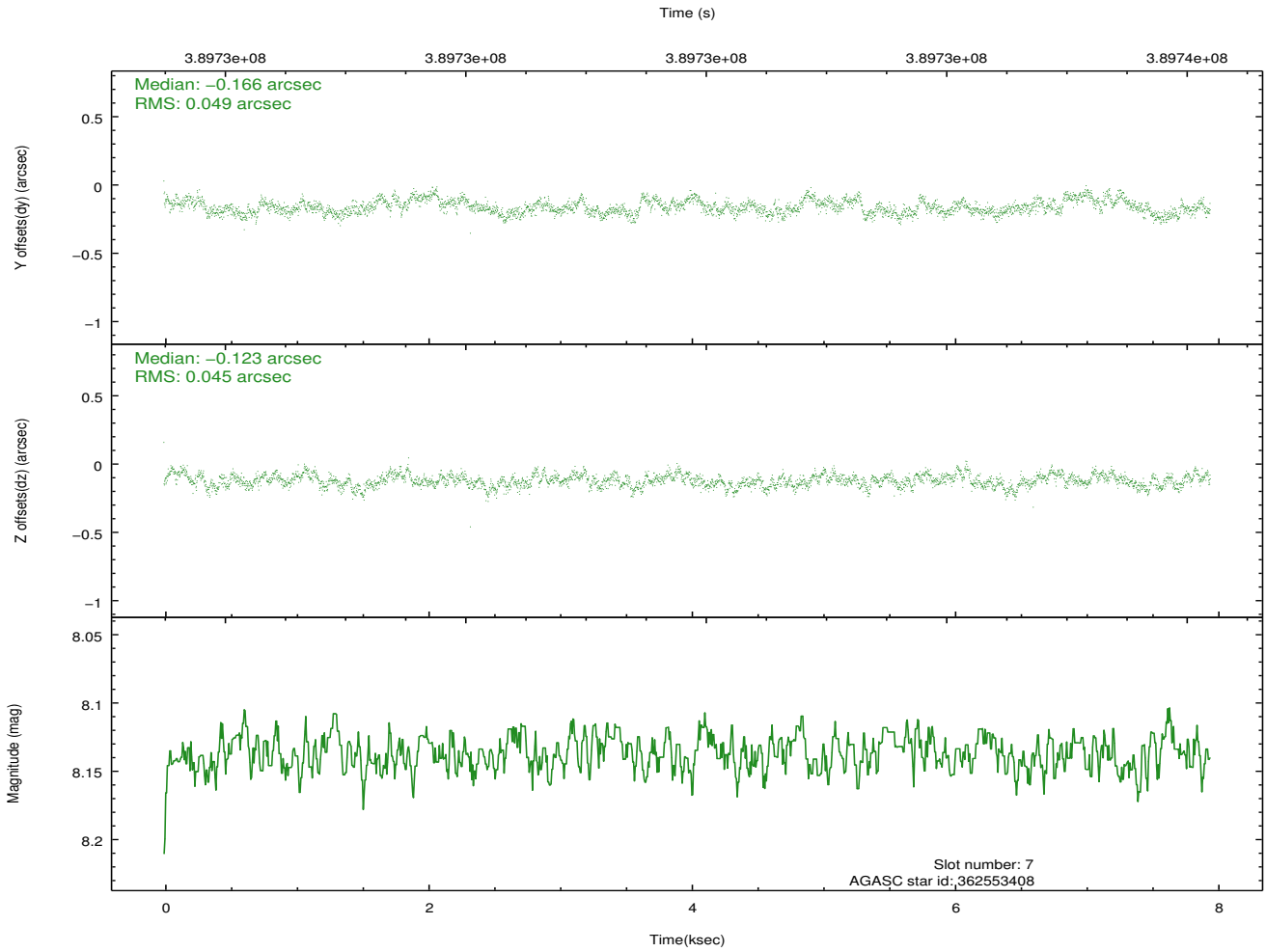
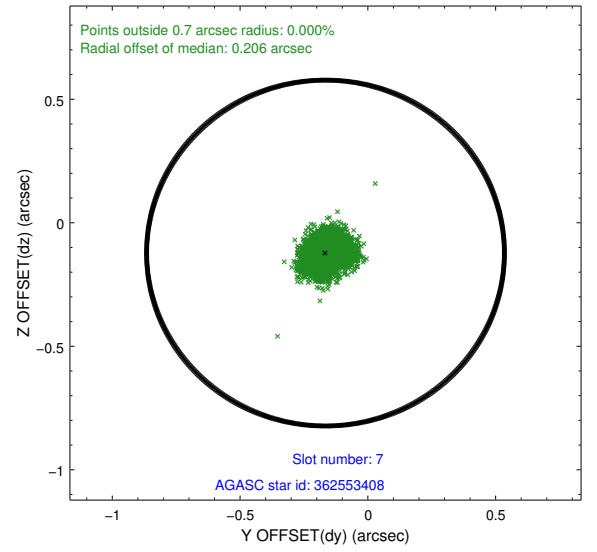
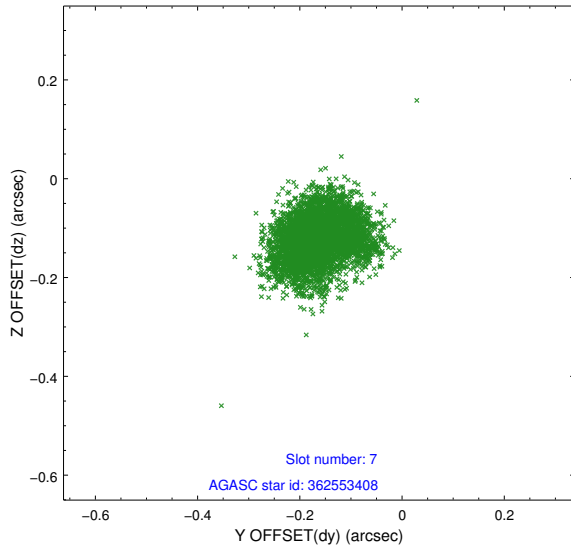
2.4.3 Slot 5



2.4.4 Slot 6

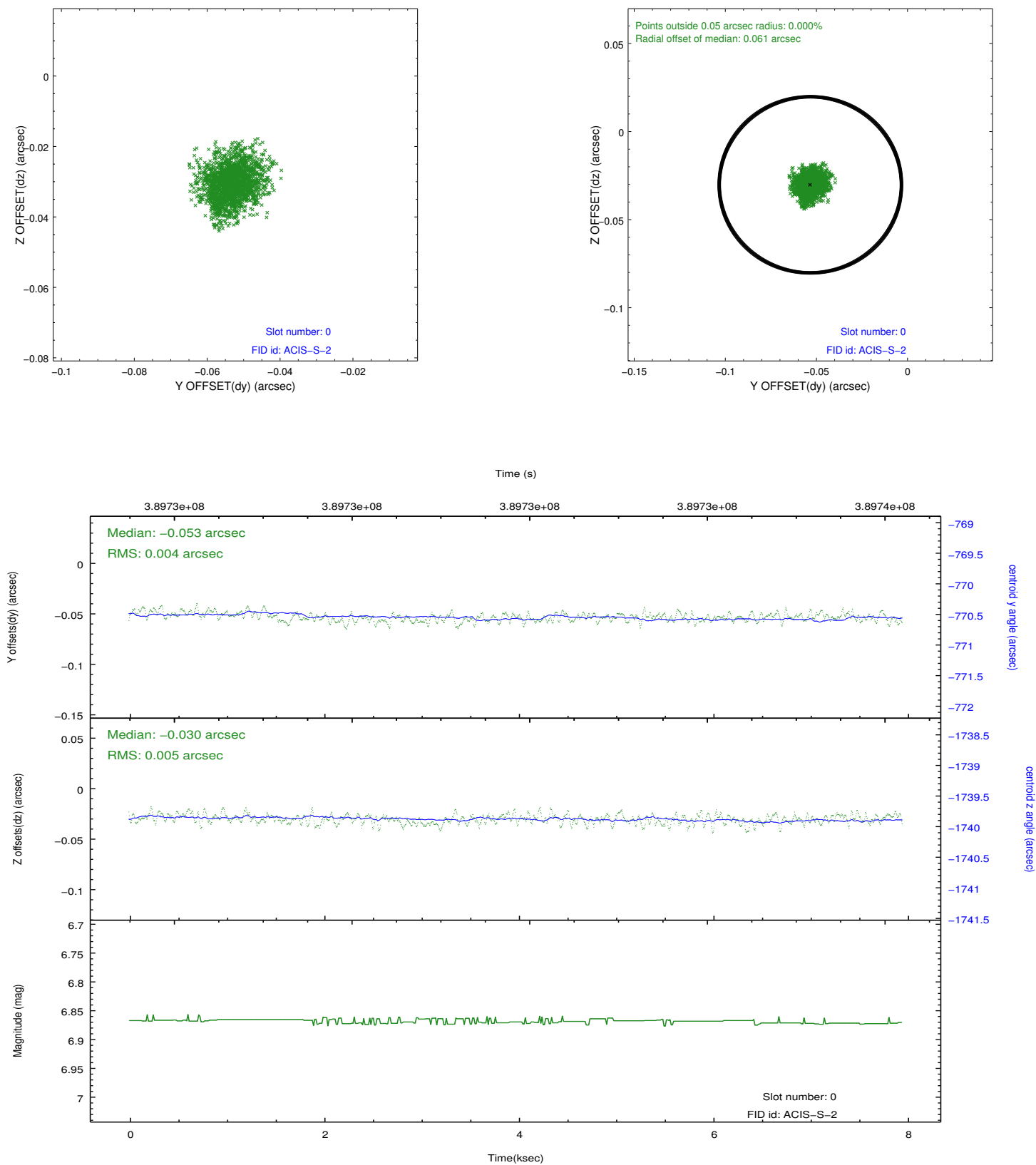


2.4.5 Slot 7

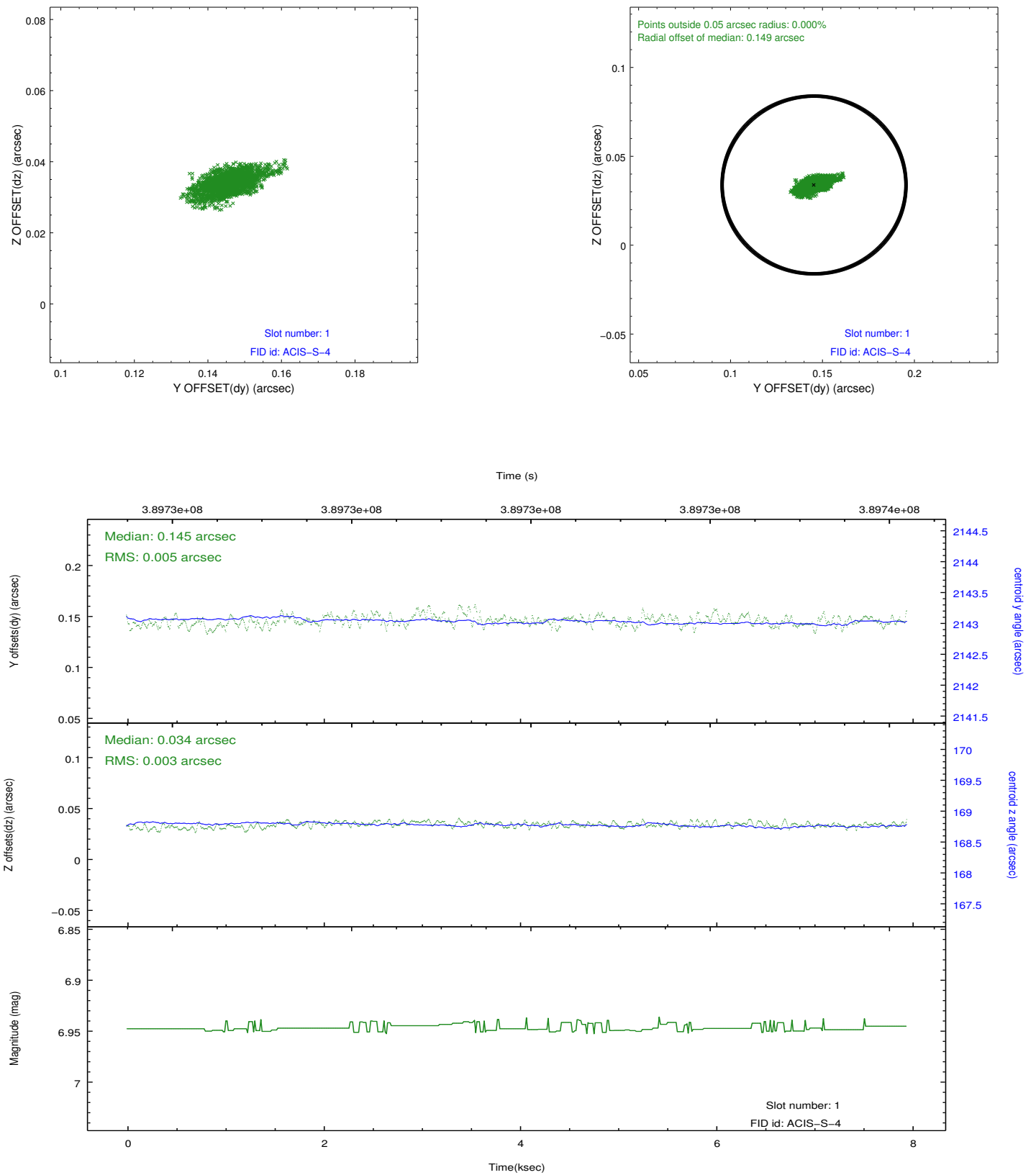


2.5 FID Slots

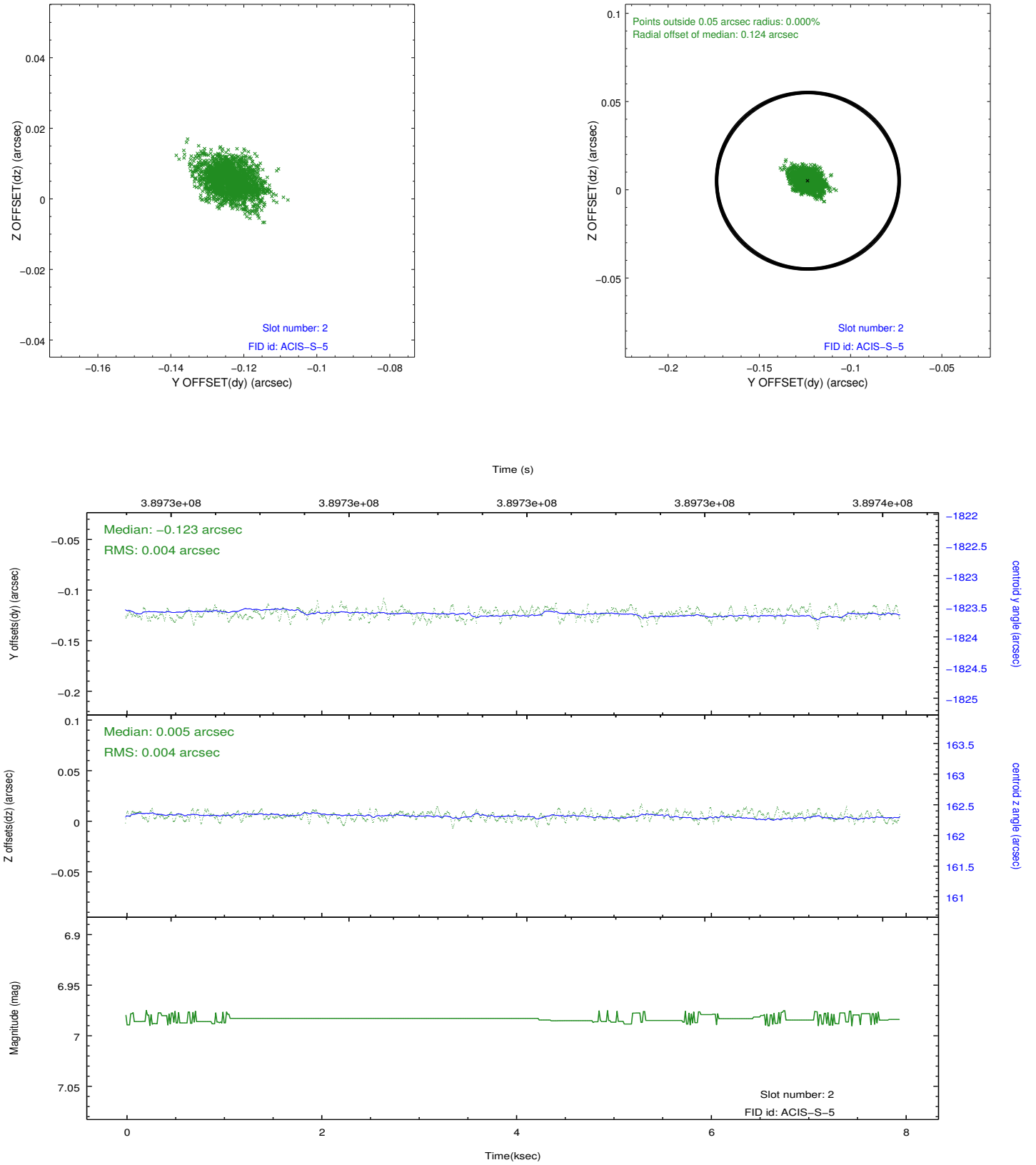
2.5.1 Slot 0



2.5.2 Slot 1



2.5.3 Slot 2



A Summary

A.1 Status

V&V Scientist	Jen Lauer
V&V Date (YYYY-MM-DD)	2012.07.02
V&V Edition	1
V&V Disposition and Status	OK
V&V Charge Time	7.9455999704599

A.2 Comments