

V&V Reference Report

L2 ASCDS Version : 8.4.5

Observation 11291 - L2 Version 2
Chandra X-Ray Center

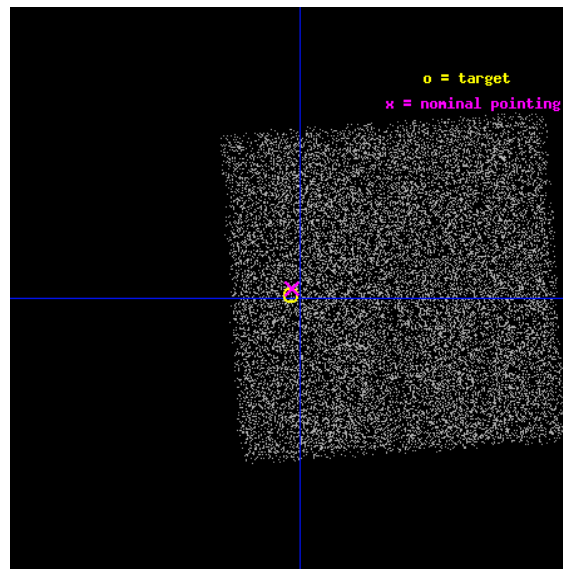
L2 Processing Date : Jun 15 2012

Contents

1	Front	2
2	OBI	3
2.1	OBI	3
2.1.1	Images	3
2.1.2	Bias	3
2.1.3	Parameters	4
2.1.4	Events	4
2.2	Compared Parameters	5
2.3	Aspect	6
2.4	Star Slots	9
2.4.1	Slot 3	9
2.4.2	Slot 4	10
2.4.3	Slot 5	11
2.4.4	Slot 6	12
2.4.5	Slot 7	13
2.5	FID Slots	14
2.5.1	Slot 0	14
2.5.2	Slot 1	15
2.5.3	Slot 2	16
A	Summary	17
A.1	Status	17
A.2	Comments	17

1 Front

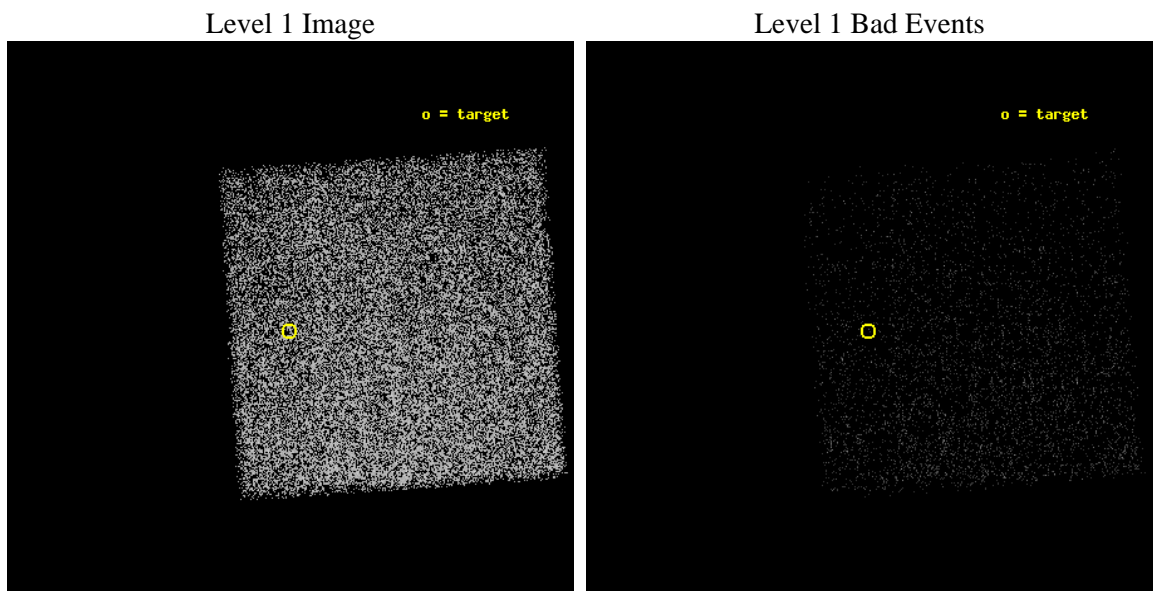
seq_num	600810	Sequence number
obs_id	11291	Observation id
title	Ultra-Luminous x-Ray Sources in the Most Metal-Poor Galaxies	Propo
observer	Dr Andrea Prestwich	Principal investigator
object	SBS 1415+437	Source name
dtcycle	0	
cycle	P	events from which exps? Prim/Second/Both
ra_targ	214.255833	Observer's specified target RA [deg]
dec_targ	43.501528	Observer's specified target Dec [deg]
ra_nom	214.25487975302	Nominal RA [deg]
dec_nom	43.504224833919	Nominal Dec [deg]
roll_nom	356.16171782383	Nominal Roll [deg]
revision	2	Processing version of data
ontime	5184.0	Sum of GTIs [s]
livetime	5114.0399337069	Livetime [s]
ontime7	5184.0	Sum of GTIs [s]
l2events	22275	Number of level 2 events



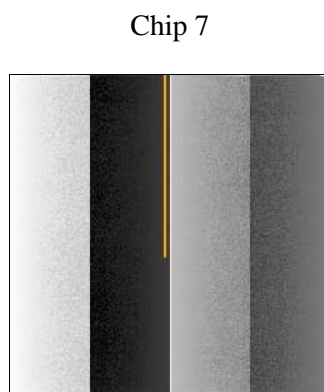
2 OBI

2.1 OBI

2.1.1 Images



2.1.2 Bias



2.1.3 Parameters

obi_num	0	Obi number	sched_exp_time	5000.000000	[s] Scheduled observation exposure time
ascdsver	8.4.5	Processing system revision	ontime	5184.0	Sum of GTIs [s]
caldsver	4.4.10	 	ontime7	5184.0	Sum of GTIs [s]
date	2012-06-16T01:26:31	Date and time of file creation	l1events	60252	Number of level 1 events
revision	2	Processing version of data			

2.1.4 Events

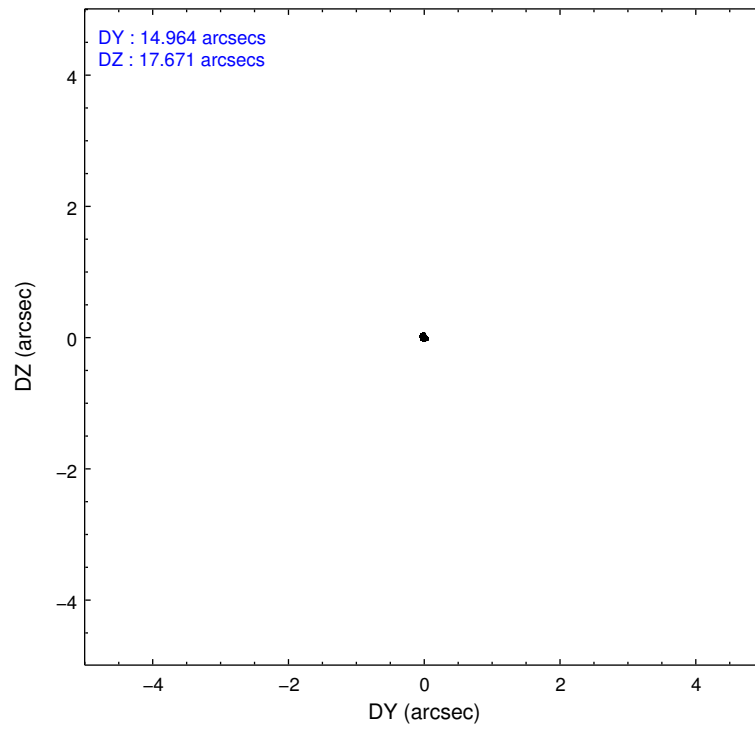
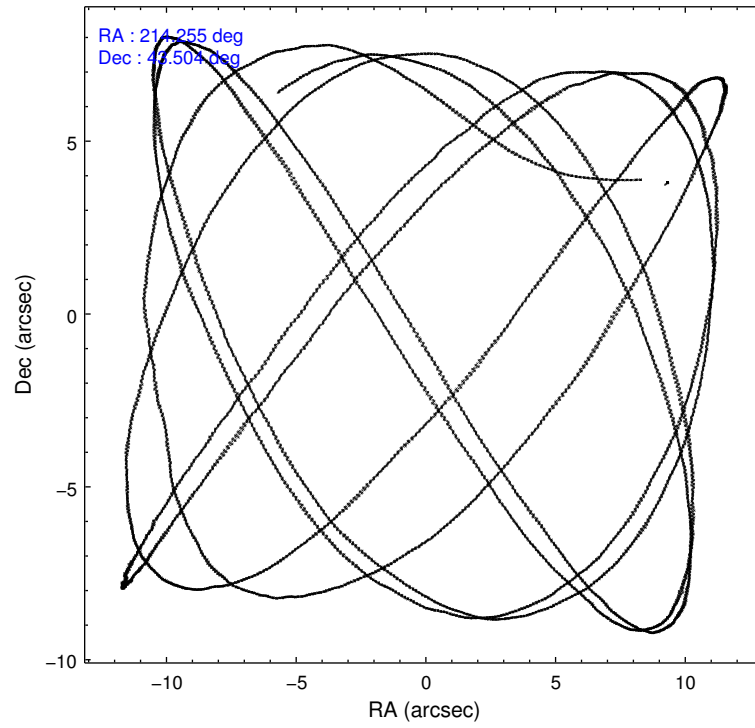
	ccd 7
level 1 events	60252
rejected events	37380
rejected %	62%

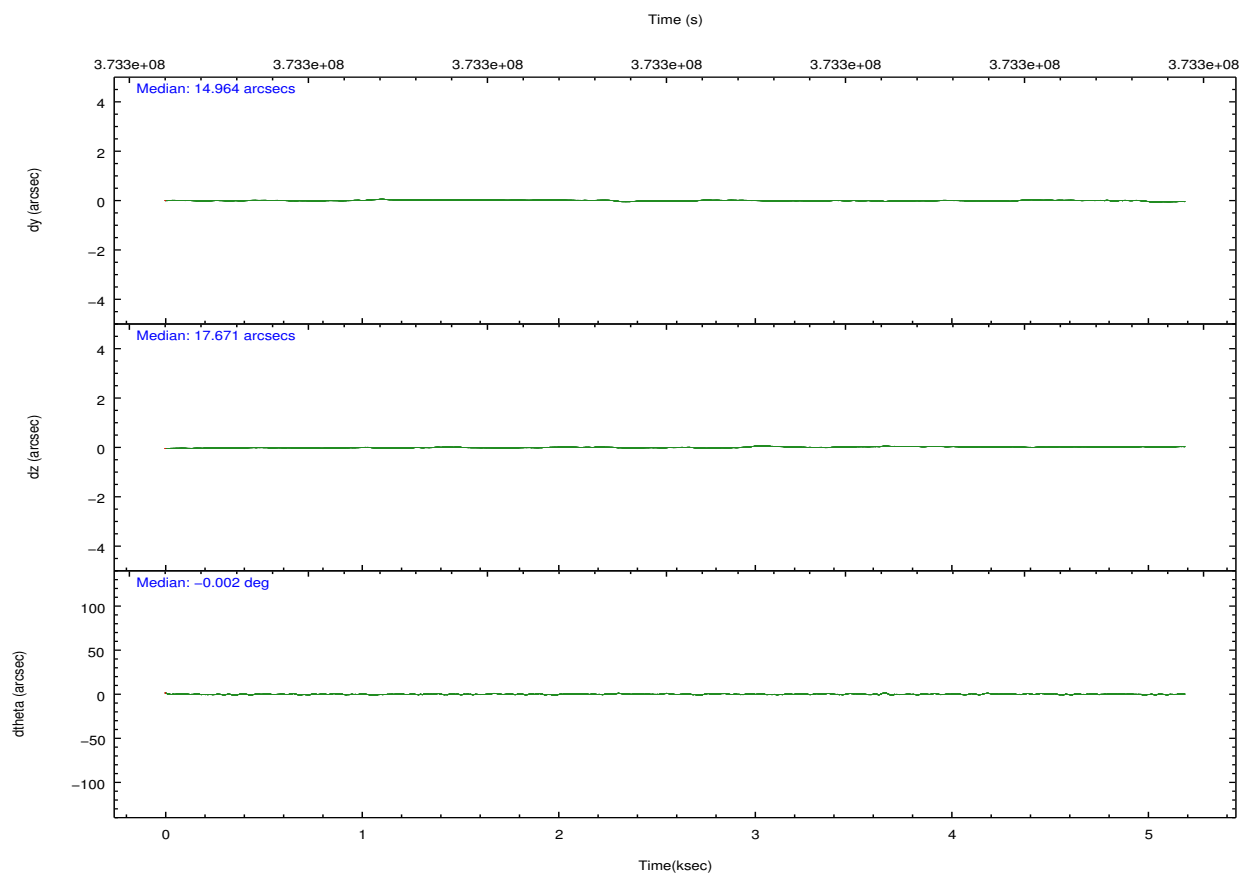
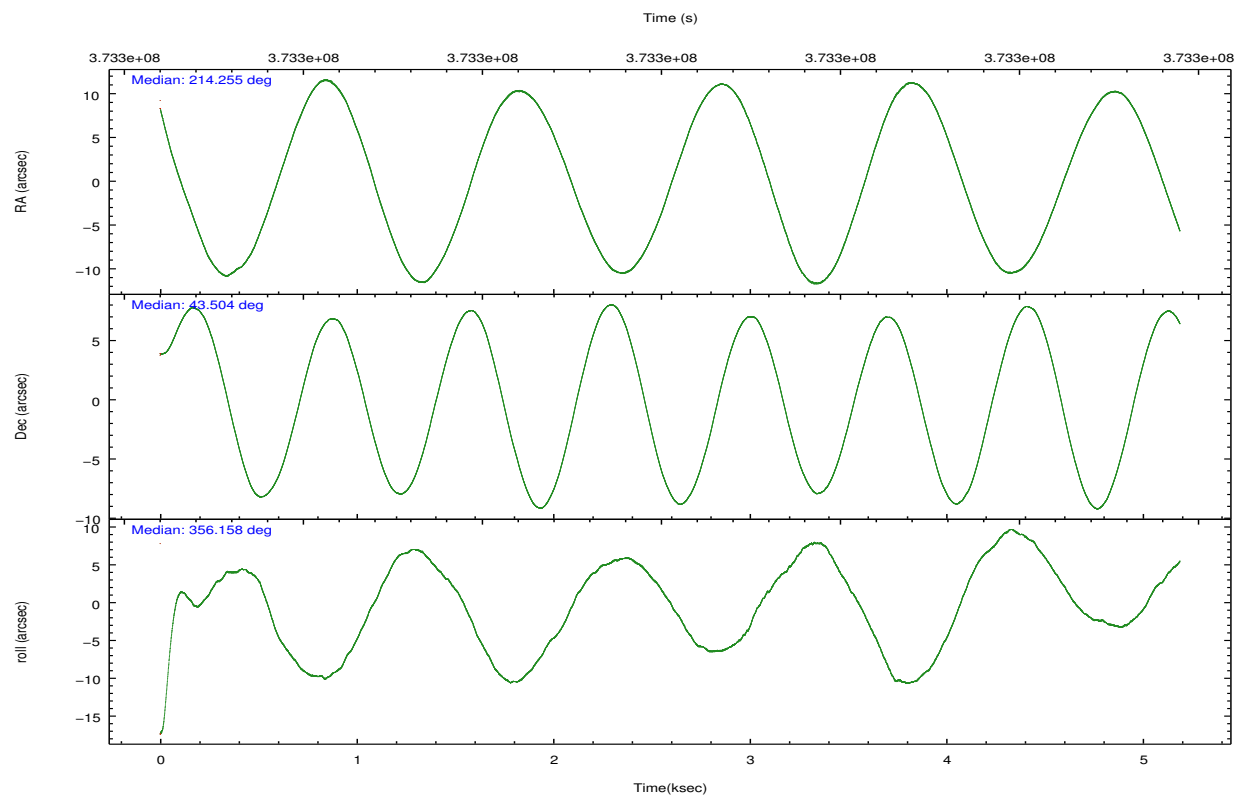
	ccd 7
grade 0 events	2566
	4%
grade 1 events	83
	0%
grade 2 events	5577
	9%
grade 3 events	2408
	3%
grade 4 events	2380
	3%
grade 5 events	6386
	10%
grade 6 events	14445
	23%
grade 7 events	26407
	43%

2.2 Compared Parameters

Parameter	Planned	Actual	Parameter	Planned	Actual
Instrument	ACIS	ACIS	Obspar format version number	7	7
Detector	ACIS-7	ACIS-7	Obspar file type	PREDICTED	ACTUAL
Grating	NONE	NONE	Obspar update status	NONE	UPDATED
Data mode	VFAINT	VFAINT	Number of optional ACIS chips dropped	0	0
Observation mode	POINTING	POINTING	On-chip summing requested	N	N
[deg] Pointing RA	214.221266	214.2548797530204	Subarray requested	NONE	NONE
[deg] Pointing Dec	43.491741	43.50422483391893	Alternating exposures requested	N	N
[deg] Pointing Roll	356.028267	356.1617178238336	[s] Primary exposure time	0.000000	3
[mm] SIM focus pos	-0.684267	-0.6828225247311905			
[mm] SIM defocus	0	0.001444936568705701			
[mm] SIM translation stage pos	-190.132523	-190.145094680475			
[mm] SIM translation stage offset	0	0.01257209746719923			
[s] Observation start time (MET)	373295643.184000	373294407.36439			
Observation start date	2009-10-30T13:12:57	2009-10-30T12:53:27			
[s] Observation end time (MET)	373300643.184000	373301343.53974			
Observation end date	2009-10-30T14:36:17	2009-10-30T14:49:03			
Read mode	TIMED	TIMED			

2.3 Aspect



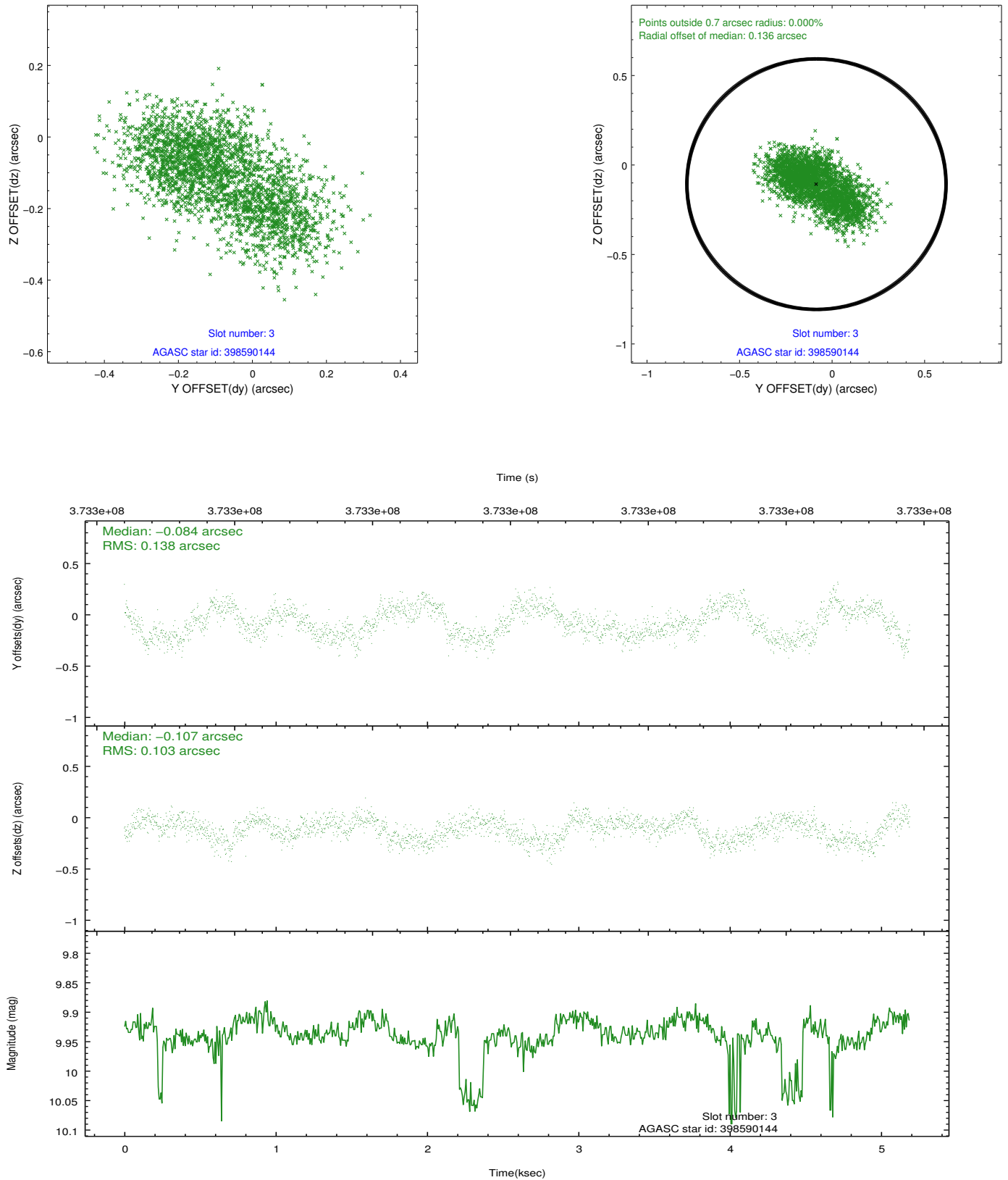


Slot Statistics

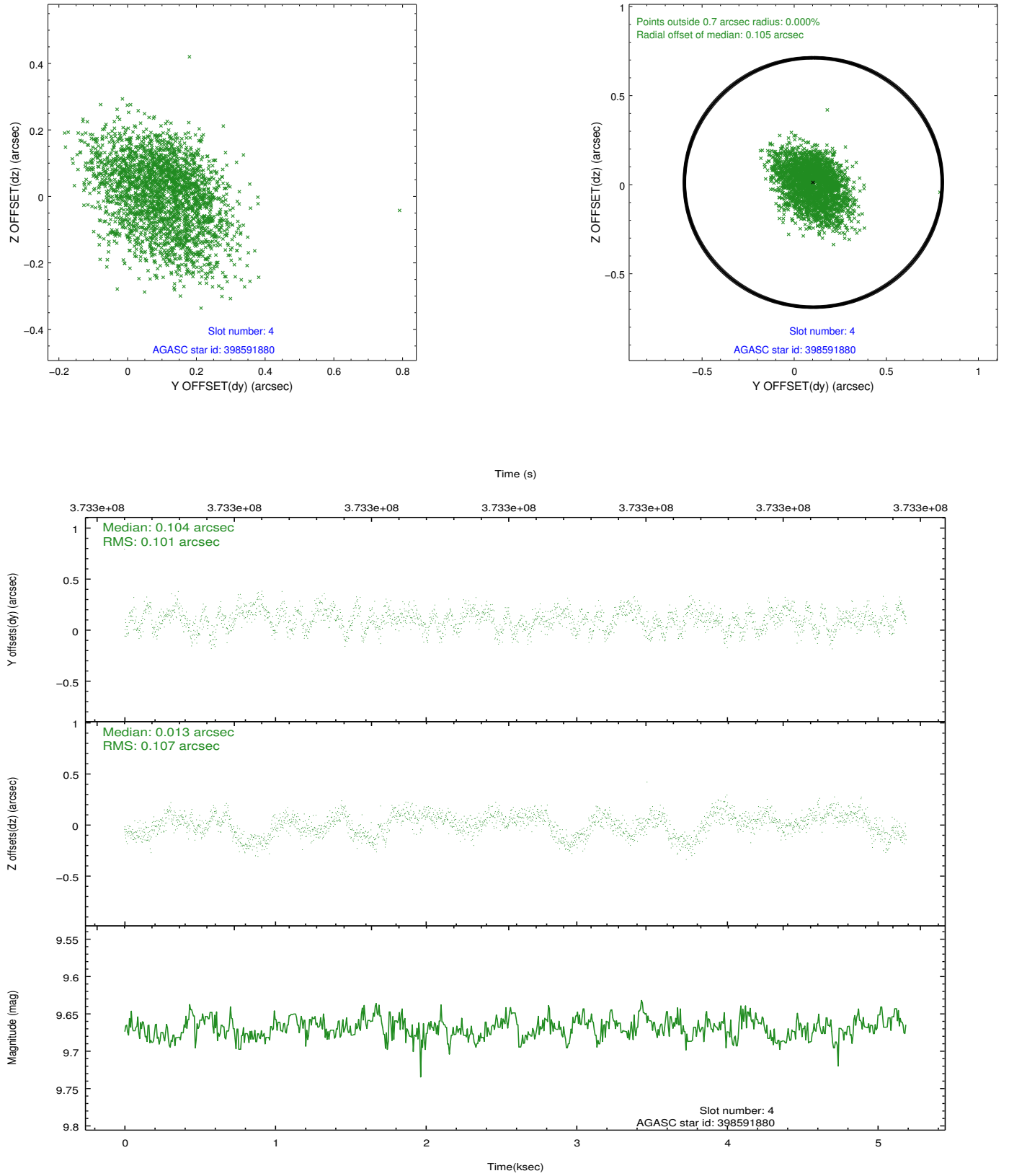
slot	status	id	mag	n_pts	med_dy	med_dz	dr1	dr2	ra	dec	mean_y	mean_z
0	FID	ACIS-S-2	6.87	1266	-0.100	-0.051	0.006	0.011	0.000000	0.000000	-768.10	-1739.04
1	FID	ACIS-S-4	6.97	1265	0.109	0.060	0.006	0.012	0.000000	0.000000	2144.92	168.22
2	FID	ACIS-S-6	7.10	1266	-0.037	-0.002	0.006	0.011	0.000000	0.000000	395.54	806.96
3	GUIDE	398590144	9.94	2518	-0.084	-0.107	0.185	0.294	214.824292	43.702978	1512.16	872.74
4	GUIDE	398591880	9.67	2526	0.104	0.013	0.158	0.252	215.009235	42.817914	2244.25	-2265.56
5	GUIDE	398592560	8.96	2531	-0.122	0.082	0.136	0.204	214.590700	43.125816	1060.60	-1245.26
6	GUIDE	398597832	9.53	2524	0.032	-0.186	0.123	0.192	213.515231	43.585959	-1859.94	217.96
7	GUIDE	398463648	9.77	2531	0.053	0.221	0.119	0.192	213.282191	43.018368	-2348.76	-1857.61

2.4 Star Slots

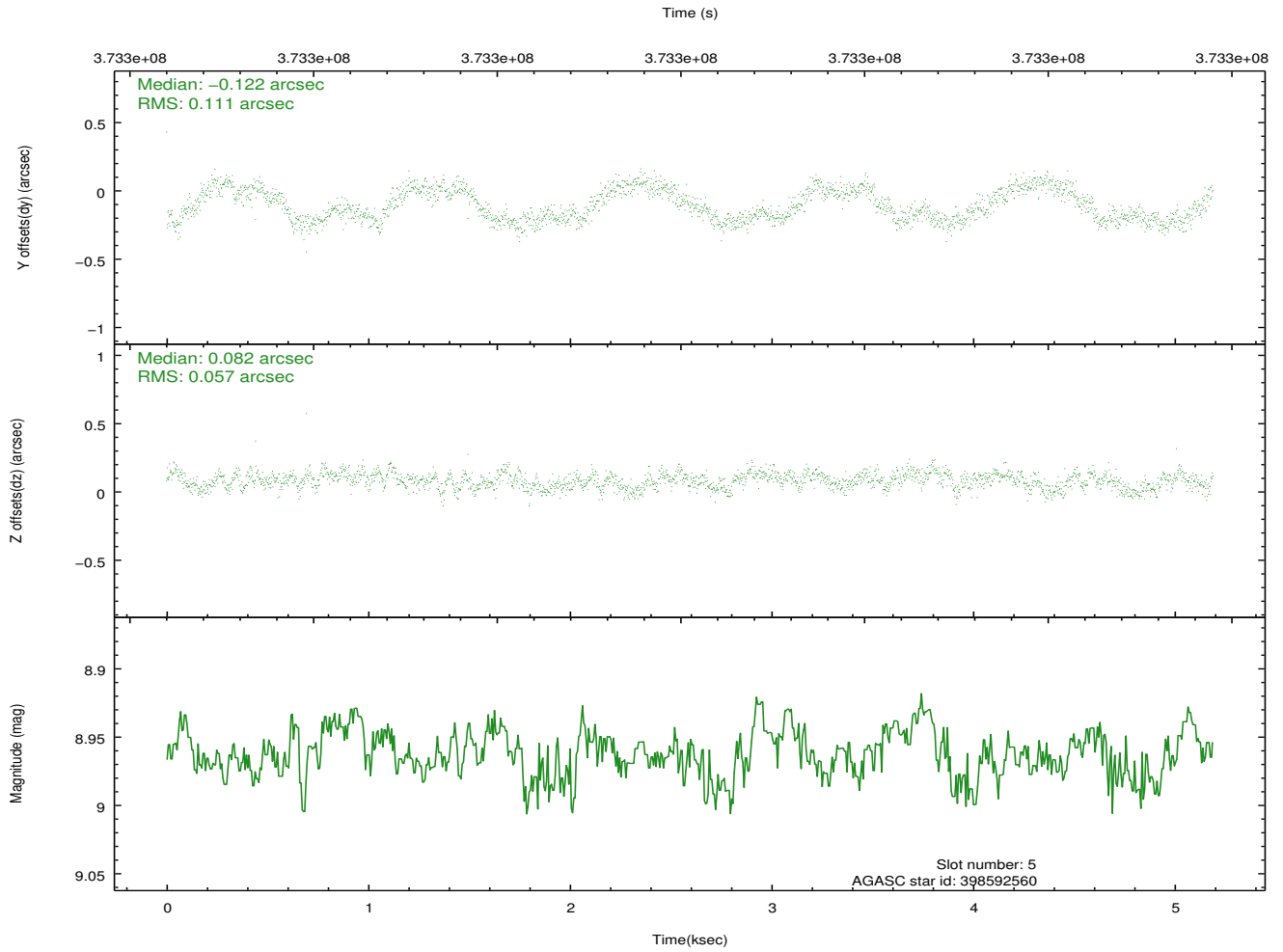
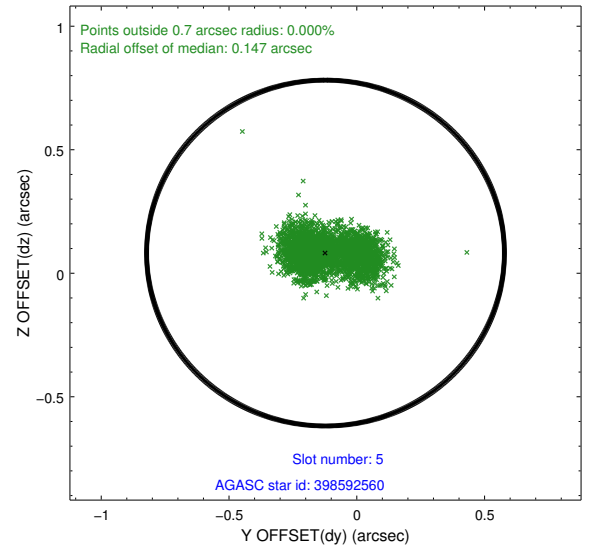
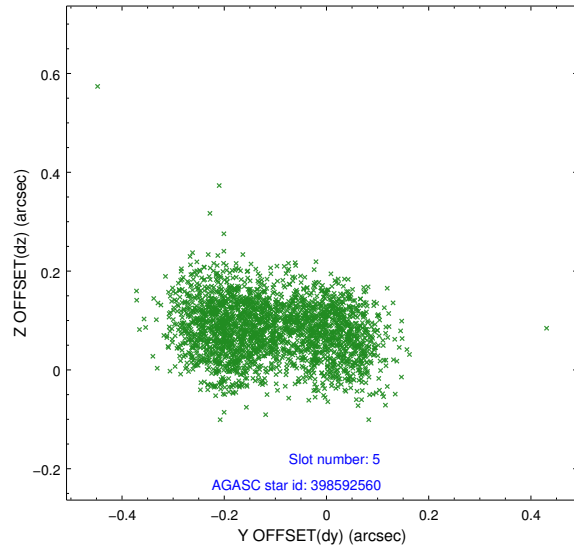
2.4.1 Slot 3



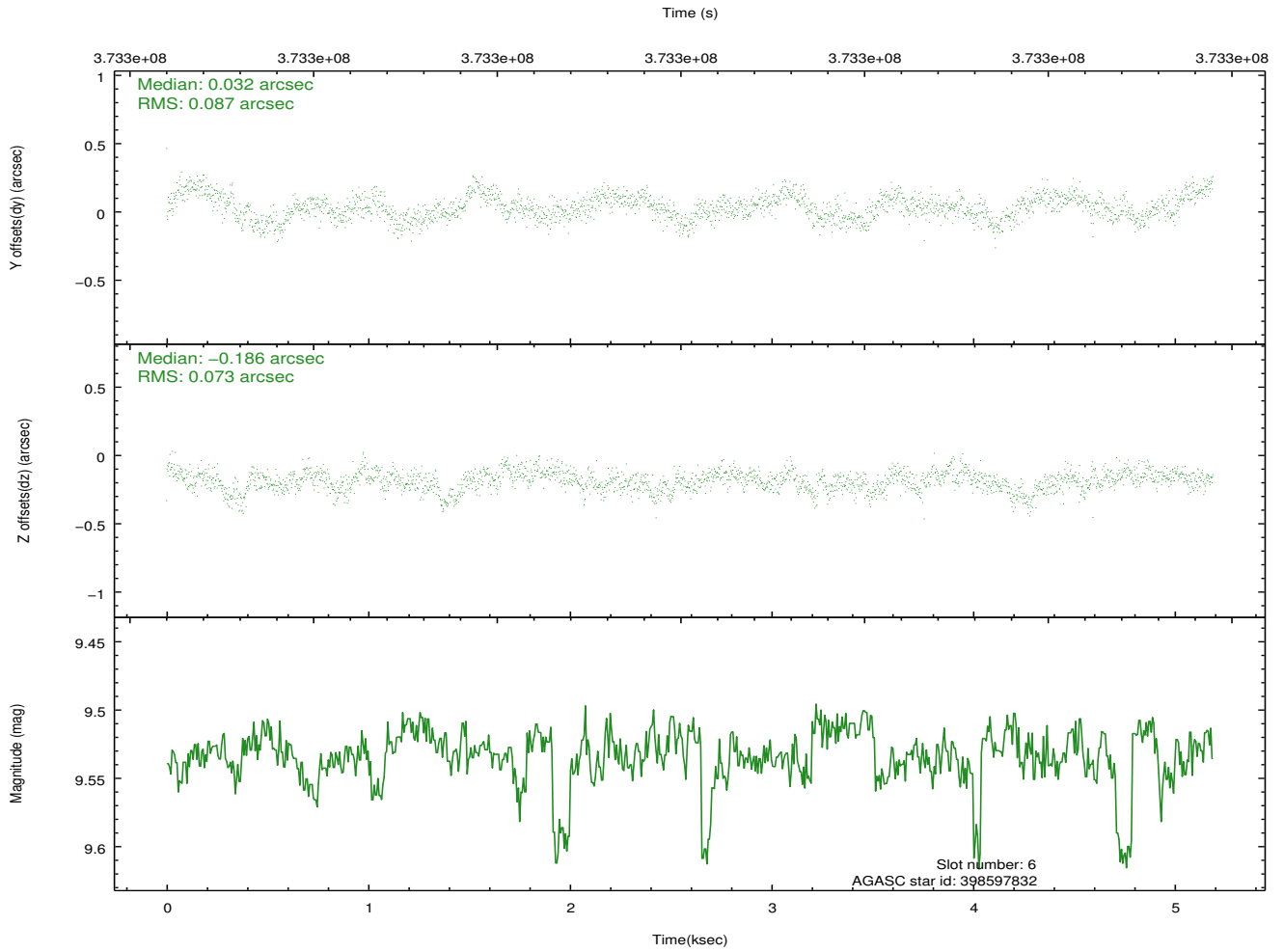
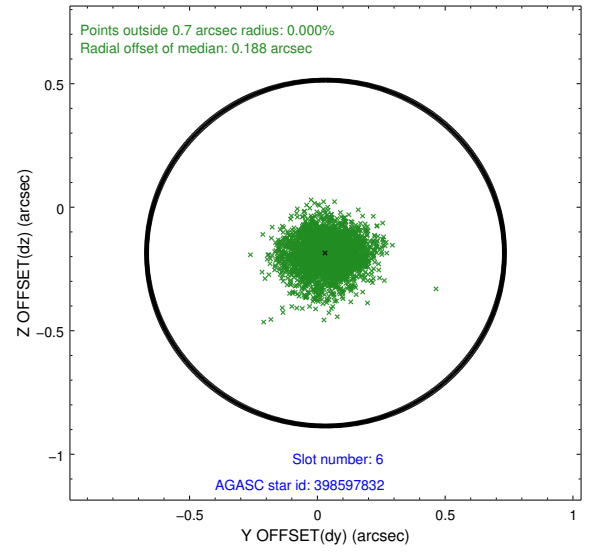
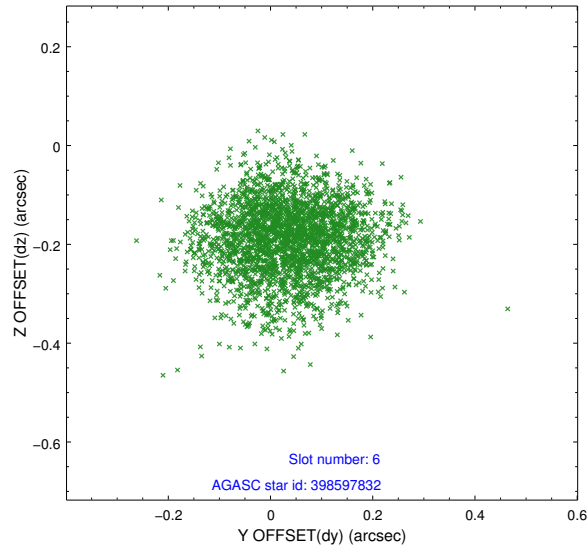
2.4.2 Slot 4



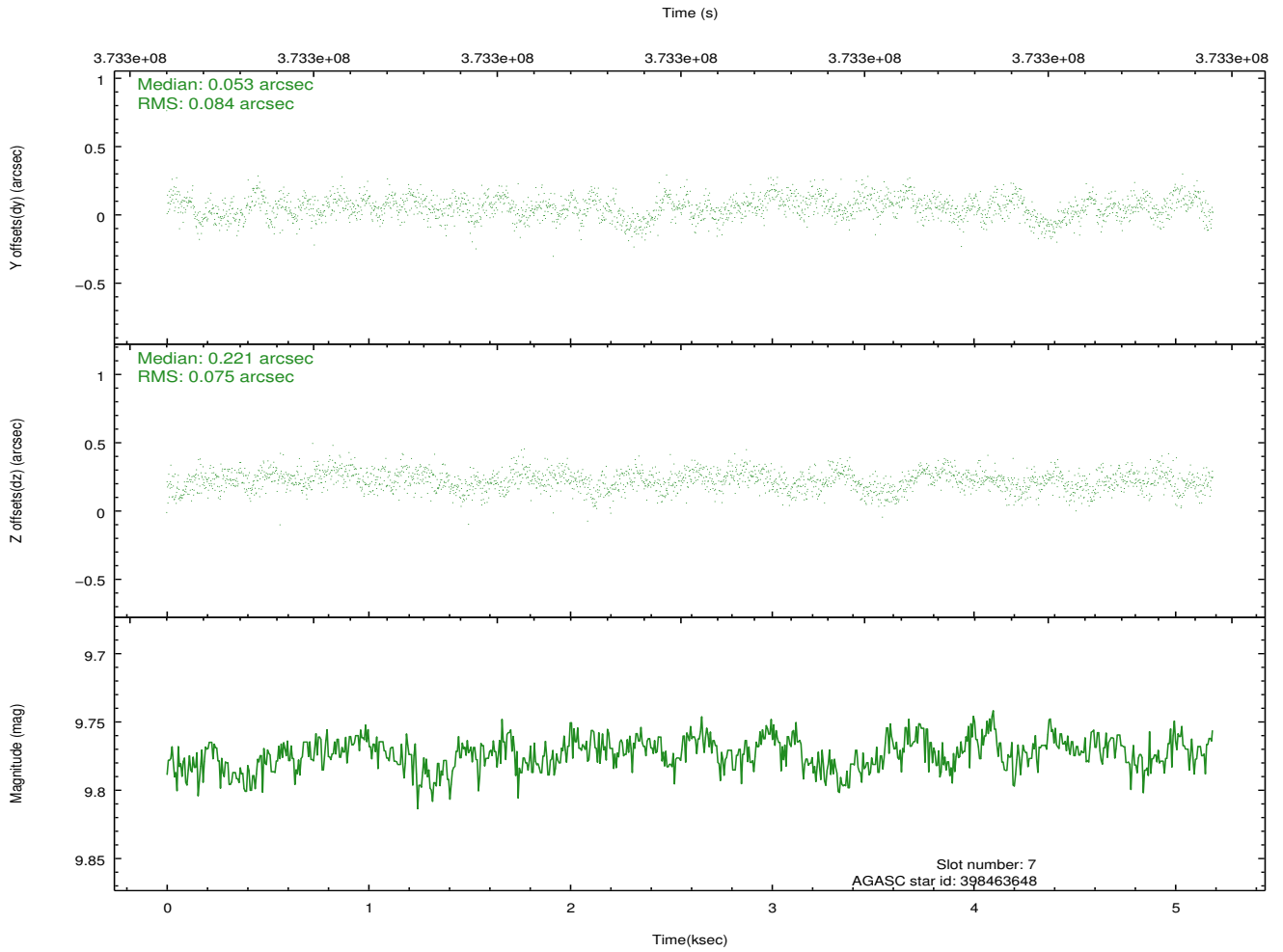
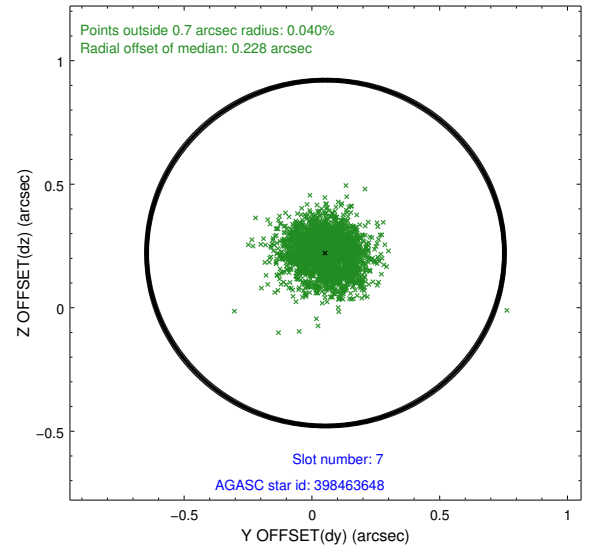
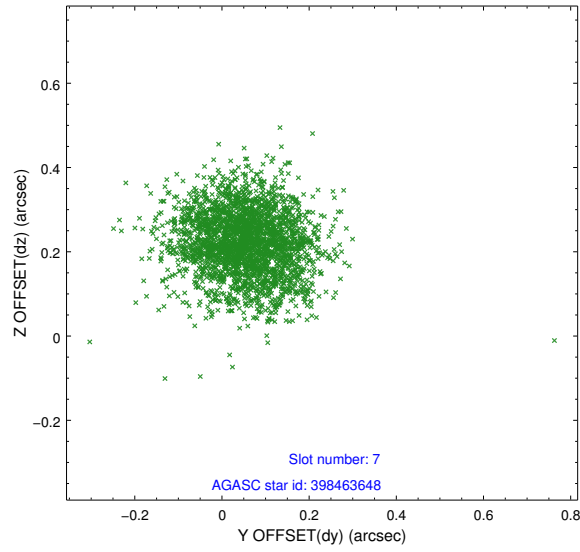
2.4.3 Slot 5



2.4.4 Slot 6

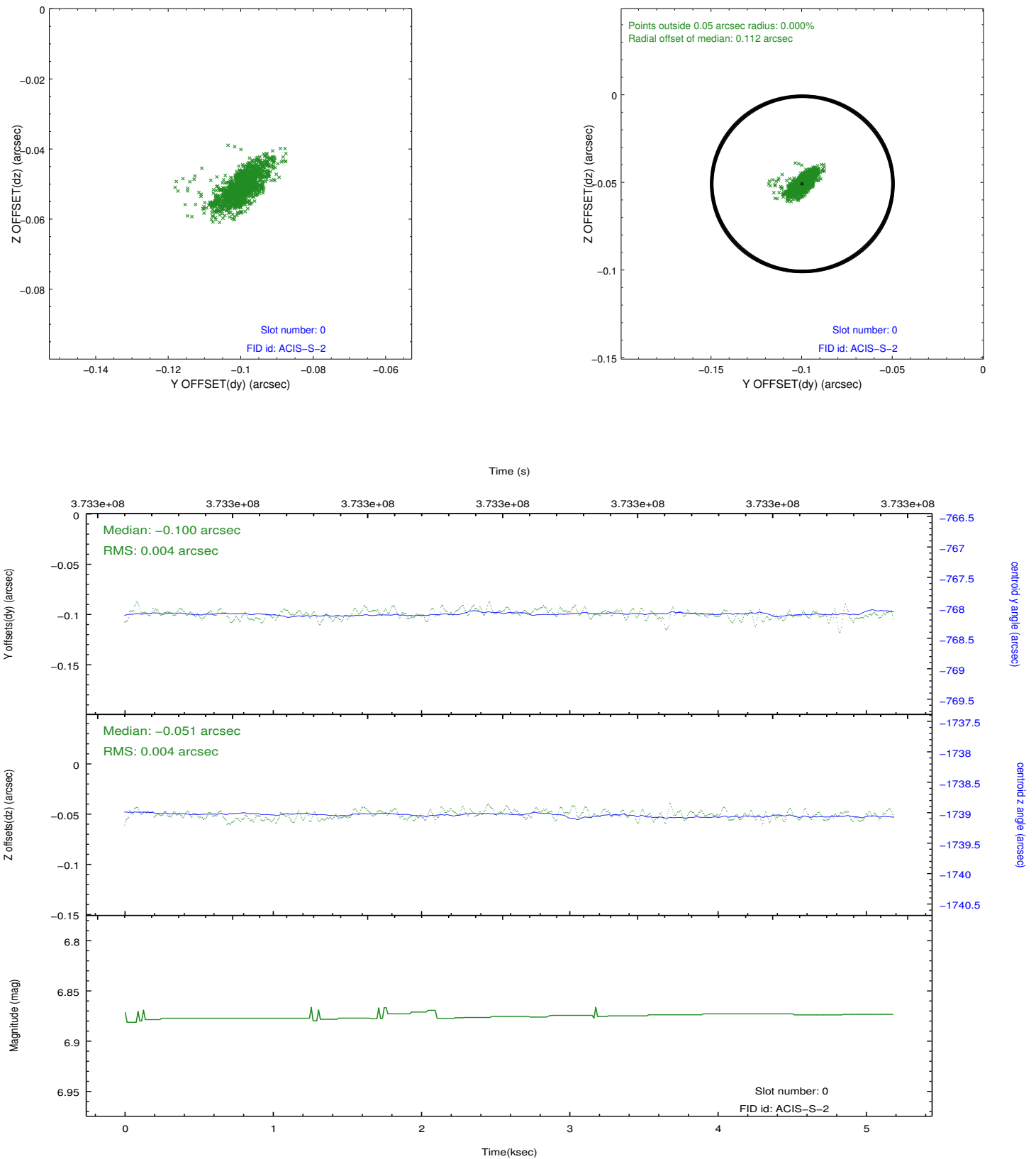


2.4.5 Slot 7

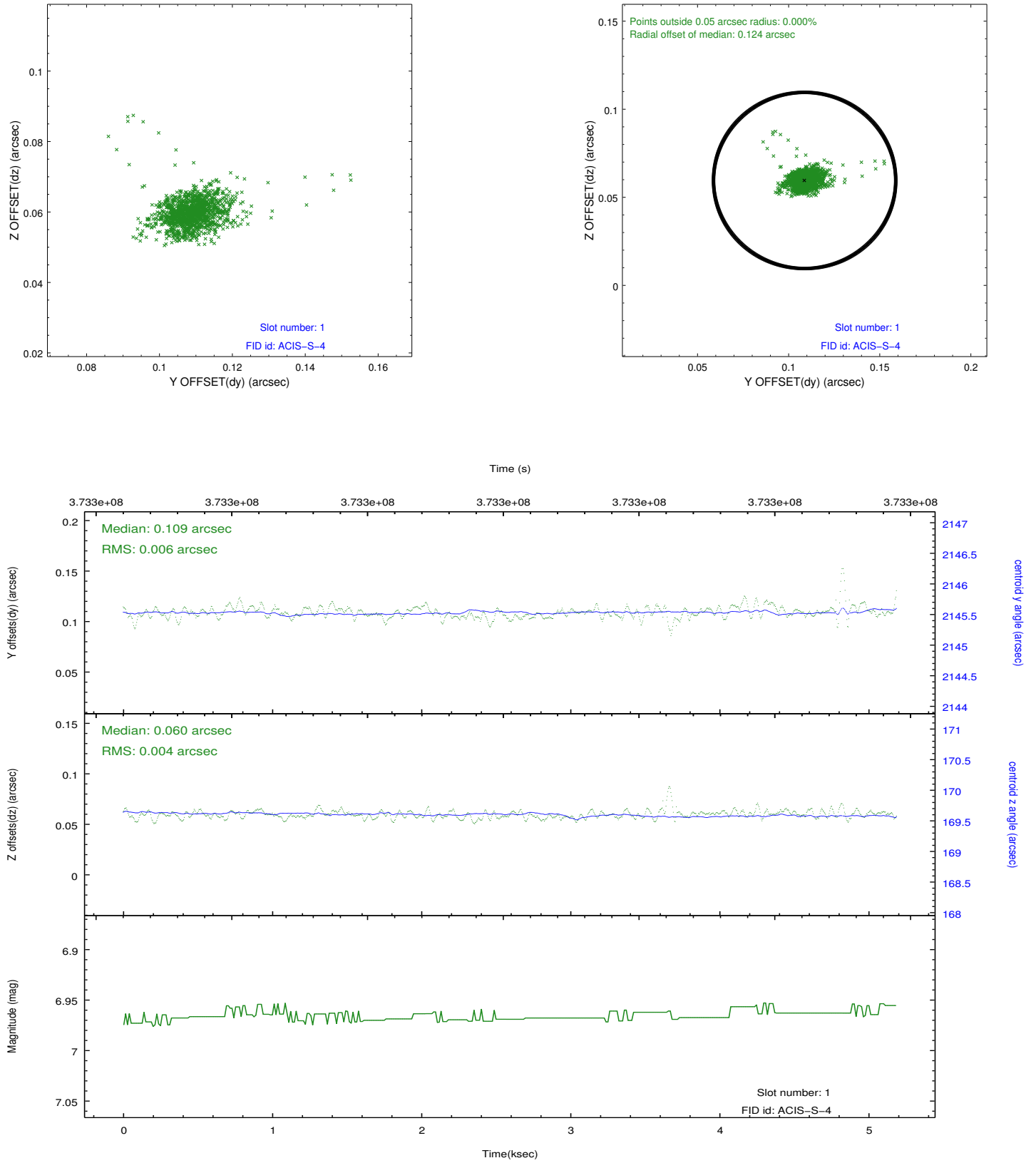


2.5 FID Slots

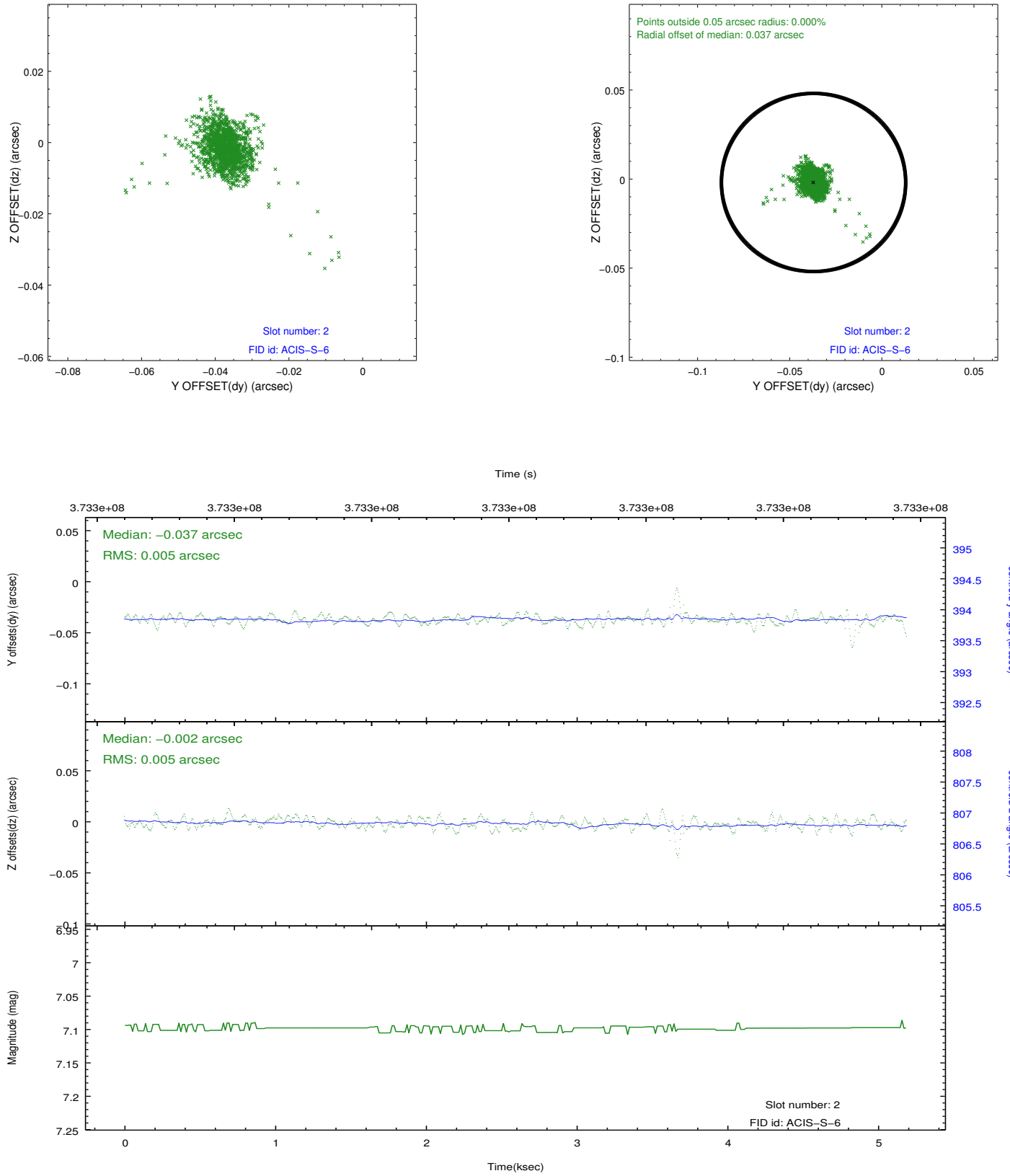
2.5.1 Slot 0



2.5.2 Slot 1



2.5.3 Slot 2



A Summary

A.1 Status

V&V Scientist	Jen Lauer
V&V Date (YYYY-MM-DD)	2012.06.20
V&V Edition	1
V&V Disposition and Status	OK
V&V Charge Time	5.184

A.2 Comments

Joint proposal with HST.