

V&V Reference Report

L2 ASCDS Version : 8.4.5

Observation 11276 - L2 Version 2
Chandra X-Ray Center

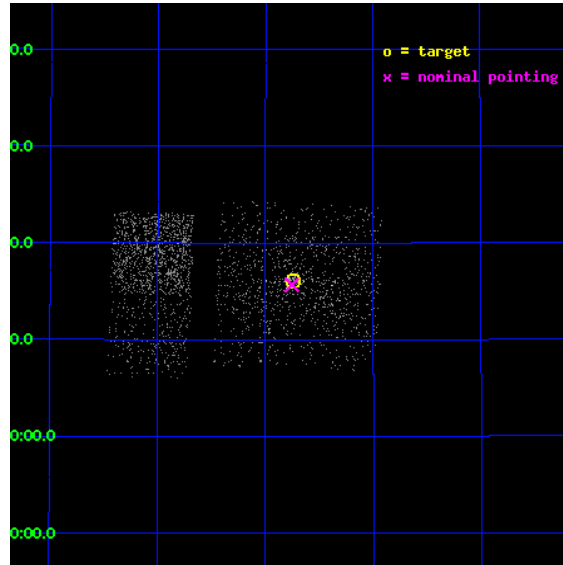
L2 Processing Date : Jun 17 2012

Contents

1	Front	2
2	OBI Primary	3
2.1	OBI	3
2.1.1	Images	3
2.1.2	Bias	3
2.1.3	Parameters	4
2.1.4	Events	4
2.2	Compared Parameters	5
2.3	Aspect	6
2.4	Star Slots	9
2.4.1	Slot 3	9
2.4.2	Slot 4	10
2.4.3	Slot 5	11
2.4.4	Slot 6	12
2.4.5	Slot 7	13
2.5	FID Slots	14
2.5.1	Slot 0	14
2.5.2	Slot 1	15
2.5.3	Slot 2	16
3	OBI Secondary	17
3.1	OBI	17
3.1.1	Images	17
3.1.2	Bias	17
3.1.3	Parameters	18
3.1.4	Events	18
A	Summary	19
A.1	Status	19
A.2	Comments	19

1 Front

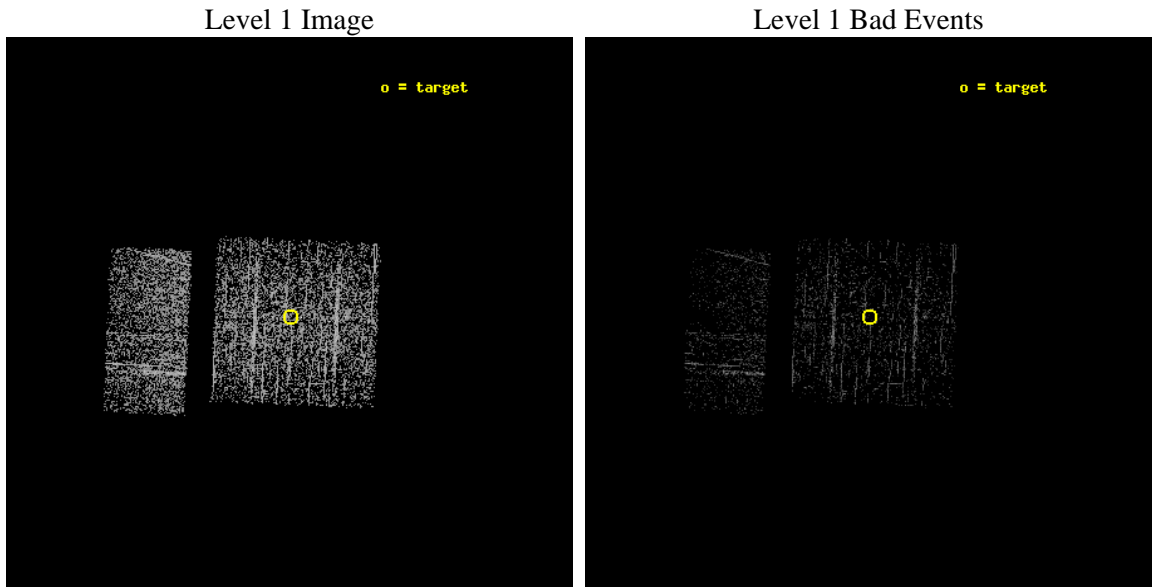
seq_num	600795	Sequence number
obs_id	11276	Observation id
title	Monitoring M31 for BHXNe	Proposal title
observer	Dr. Michael Garcia	Principal investigator
object	M31	Source name
dtcycle	0	
cycle	P	events are from which exps? P[rimary] S[econdar
ra_targ	10.685	Observer's specified target RA [deg]
dec_targ	41.268972	Observer's specified target Dec [deg]
ra_nom	10.688676061852	Nominal RA [deg]
dec_nom	41.261426700906	Nominal Dec [deg]
roll_nom	272.54050924751	Nominal Roll [deg]
revision	2	Processing version of data
ontime	937.73419779539	Sum of GTIs [s]
livetime	147.62198235728	Livetime [s]
ontime0	937.73419779539	Sum of GTIs [s]
ontime1	937.73419779539	Sum of GTIs [s]
ontime2	937.73419779539	Sum of GTIs [s]
ontime3	937.73419779539	Sum of GTIs [s]
ontime6	937.73419779539	Sum of GTIs [s]
ontime7	937.73419767618	Sum of GTIs [s]
l2events	2654	Number of level 2 events



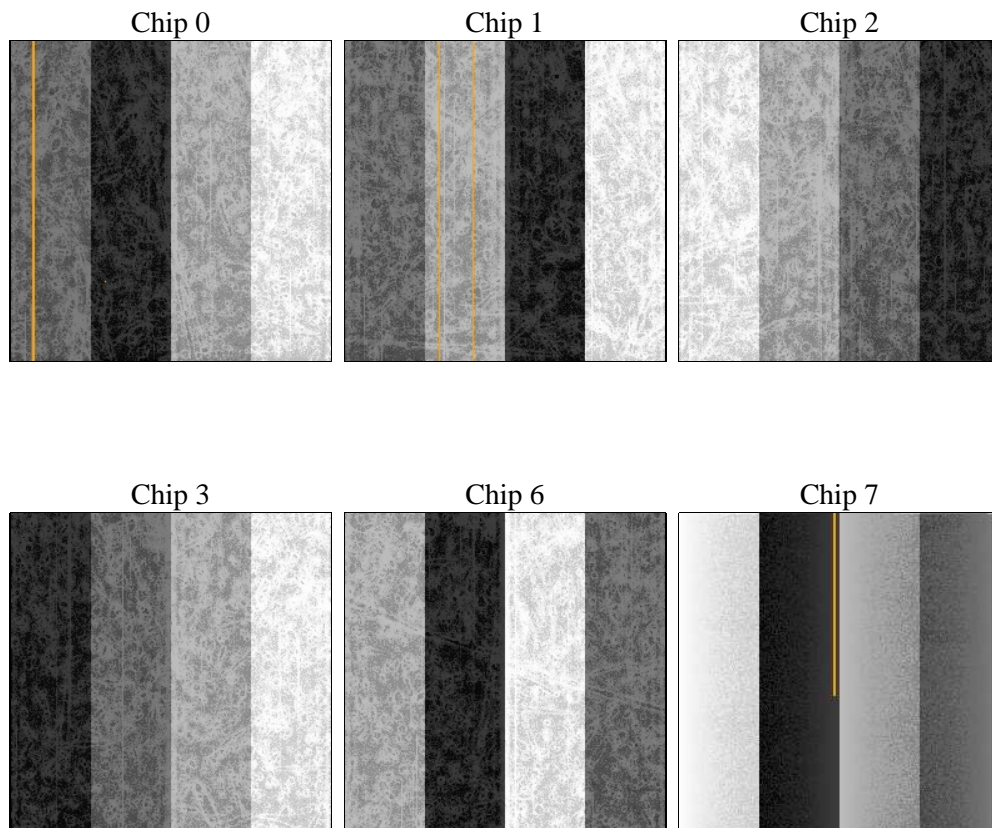
2 OBI Primary

2.1 OBI

2.1.1 Images



2.1.2 Bias



2.1.3 Parameters

obi_num	0	Obi number	sched_exp_time	5000.000000	[s] Scheduled observation exposure time
ascdsver	8.4.5	Processing system revision	ontime	937.73419779539	Sum of GTIs [s]
caldsver	4.4.10	 	ontime0	937.73419779539	Sum of GTIs [s]
date	2012-06-17T17:07:00	Date and time of file creation	ontime1	937.73419779539	Sum of GTIs [s]
revision	2	Processing version of data	ontime2	937.73419779539	Sum of GTIs [s]
			ontime3	937.73419779539	Sum of GTIs [s]
			ontime6	937.73419779539	Sum of GTIs [s]
			ontime7	937.73419767618	Sum of GTIs [s]
			l1events	23718	Number of level 1 events

2.1.4 Events

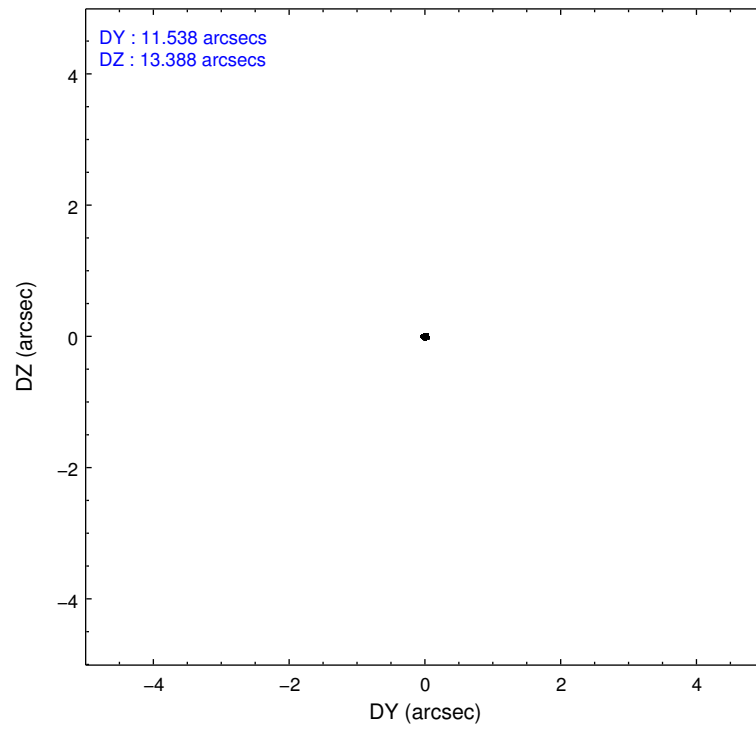
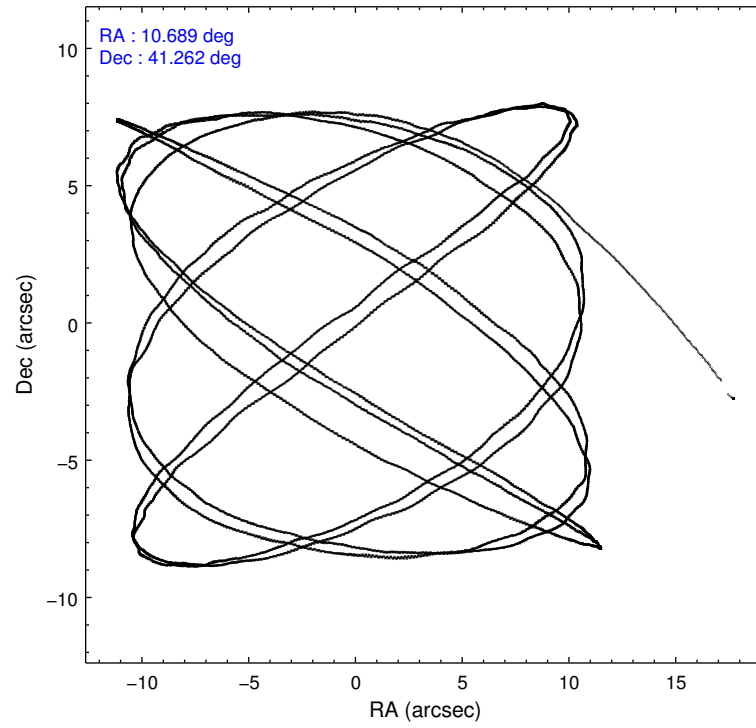
	ccd 0	ccd 1	ccd 2	ccd 3	ccd 6	ccd 7
level 1 events	3727	3911	4346	3928	4069	3737
rejected events	3341	3420	3978	3517	3737	2620
rejected %	89%	87%	91%	89%	91%	70%

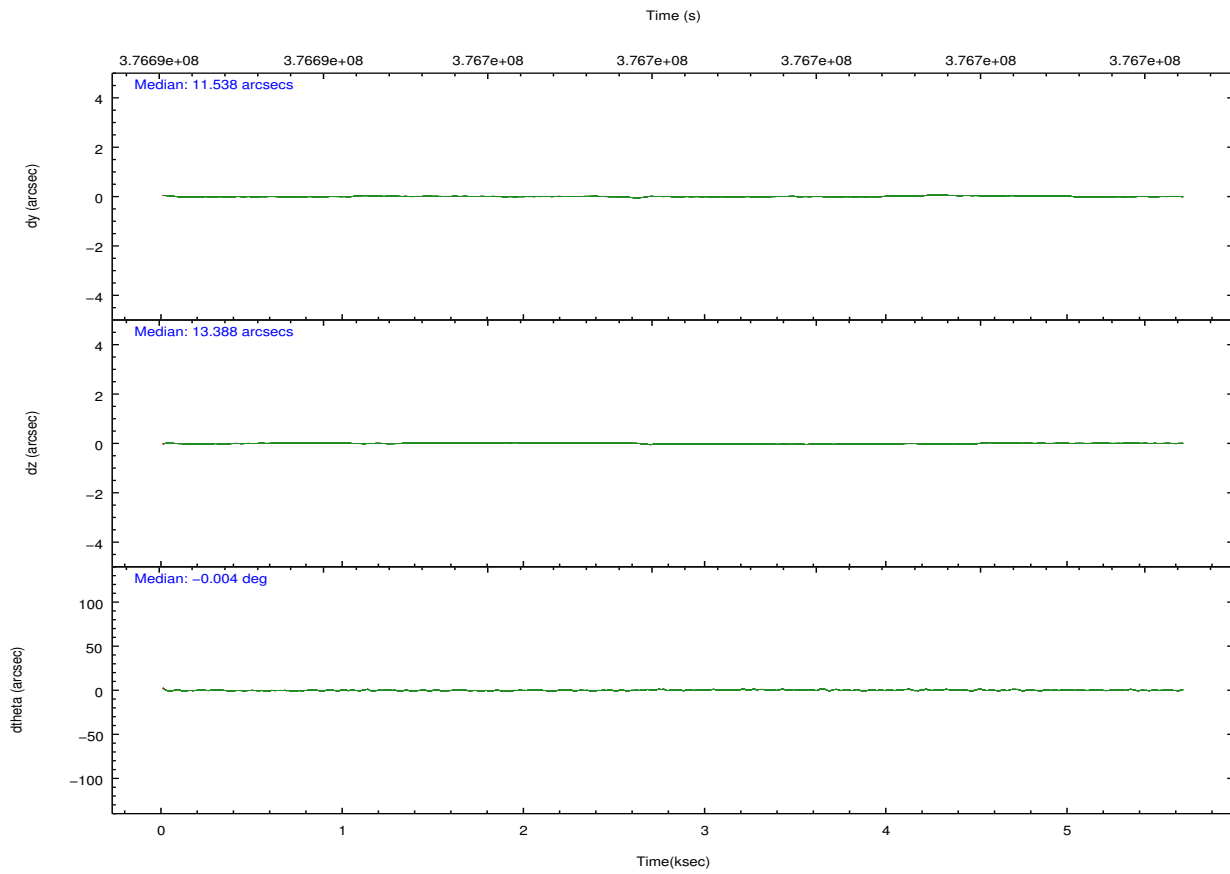
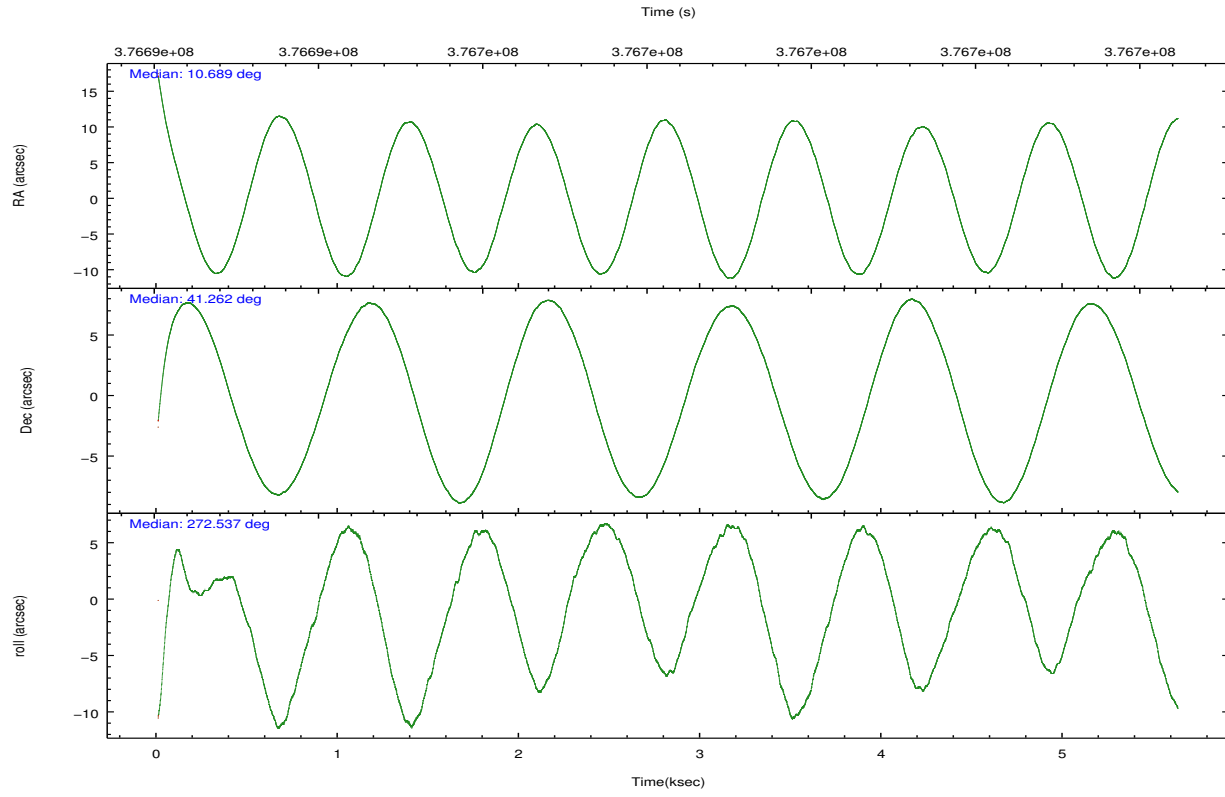
	ccd 0	ccd 1	ccd 2	ccd 3	ccd 6	ccd 7
grade 0 events	128	219	148	180	93	106
	3%	5%	3%	4%	2%	2%
grade 1 events	3	3	1	3	2	3
	0%	0%	0%	0%	0%	0%
grade 2 events	112	87	80	87	78	243
	3%	2%	1%	2%	1%	6%
grade 3 events	48	51	35	36	44	107
	1%	1%	0%	0%	1%	2%
grade 4 events	45	65	41	42	40	109
	1%	1%	0%	1%	0%	2%
grade 5 events	126	153	126	148	158	313
	3%	3%	2%	3%	3%	8%
grade 6 events	56	75	66	67	79	558
	1%	1%	1%	1%	1%	14%
grade 7 events	3209	3258	3849	3365	3575	2298
	86%	83%	88%	85%	87%	61%

2.2 Compared Parameters

Parameter	Planned	Actual	Parameter	Planned	Actual
Instrument	ACIS	ACIS	Obspar format version number	7	7
Detector	ACIS-012367	ACIS-012367	Obspar file type	PREDICTED	ACTUAL
Grating	NONE	NONE	Obspar update status	NONE	UPDATED
Data mode	VFAINT	VFAINT	CCD I0 on	Y	Y
Observation mode	POINTING	POINTING	CCD I1 on	Y	Y
[deg] Pointing RA	10.668845	10.68867606185182	CCD I2 on	Y	Y
[deg] Pointing Dec	41.284484	41.26142670090557	CCD I3 on	Y	Y
[deg] Pointing Roll	272.344909	272.5405092475102	CCD S0 on	N	N
[mm] SIM focus pos	-0.782348	-0.7809083437167272	CCD S1 on	N	N
[mm] SIM defocus	0	0.001439871863259334	CCD S2 on	O2	Y
[mm] SIM translation stage pos	-233.592463	-233.5874344608287	CCD S3 on	O1	Y
[mm] SIM translation stage offset	0	-0.005018542100998502	CCD S4 on	N	N
[s] Observation start time (MET)	376693951.184000	376692723.79823	CCD S5 on	N	N
Observation start date	2009-12-08T21:11:25	2009-12-08T20:52:03	Number of optional ACIS chips dropped	0	0
[s] Observation end time (MET)	376698951.184000	376699151.57355	On-chip summing requested	N	N
Observation end date	2009-12-08T22:34:45	2009-12-08T22:39:11	Subarray requested	NONE	NONE
Read mode	TIMED	TIMED	Alternating exposures requested	Y	Y
			[s] Primary exposure time	0.600000	0.6
			[s] Secondary exposure time	0.000000	3.2
			Duty cycle	5	5

2.3 Aspect



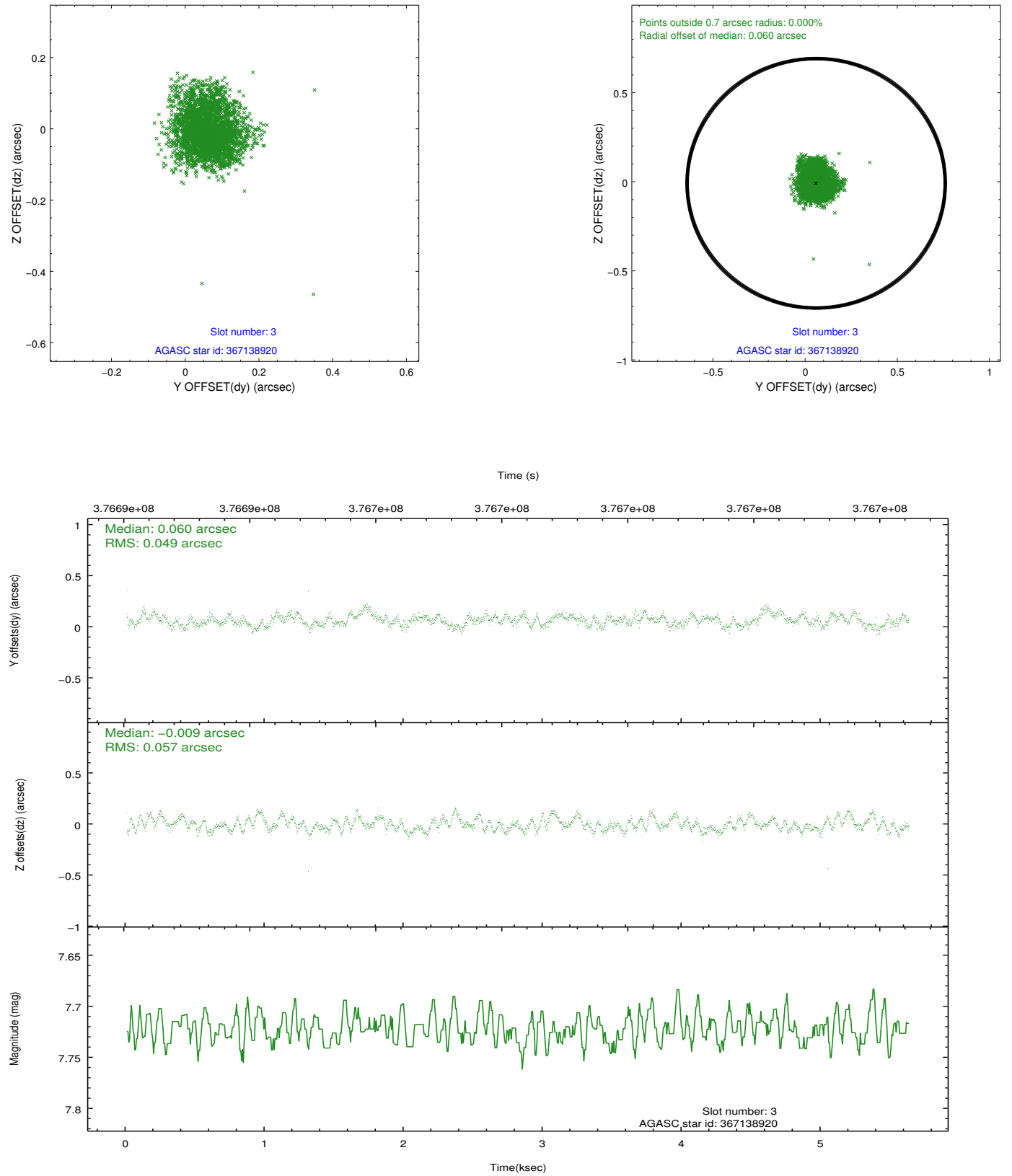


Slot Statistics

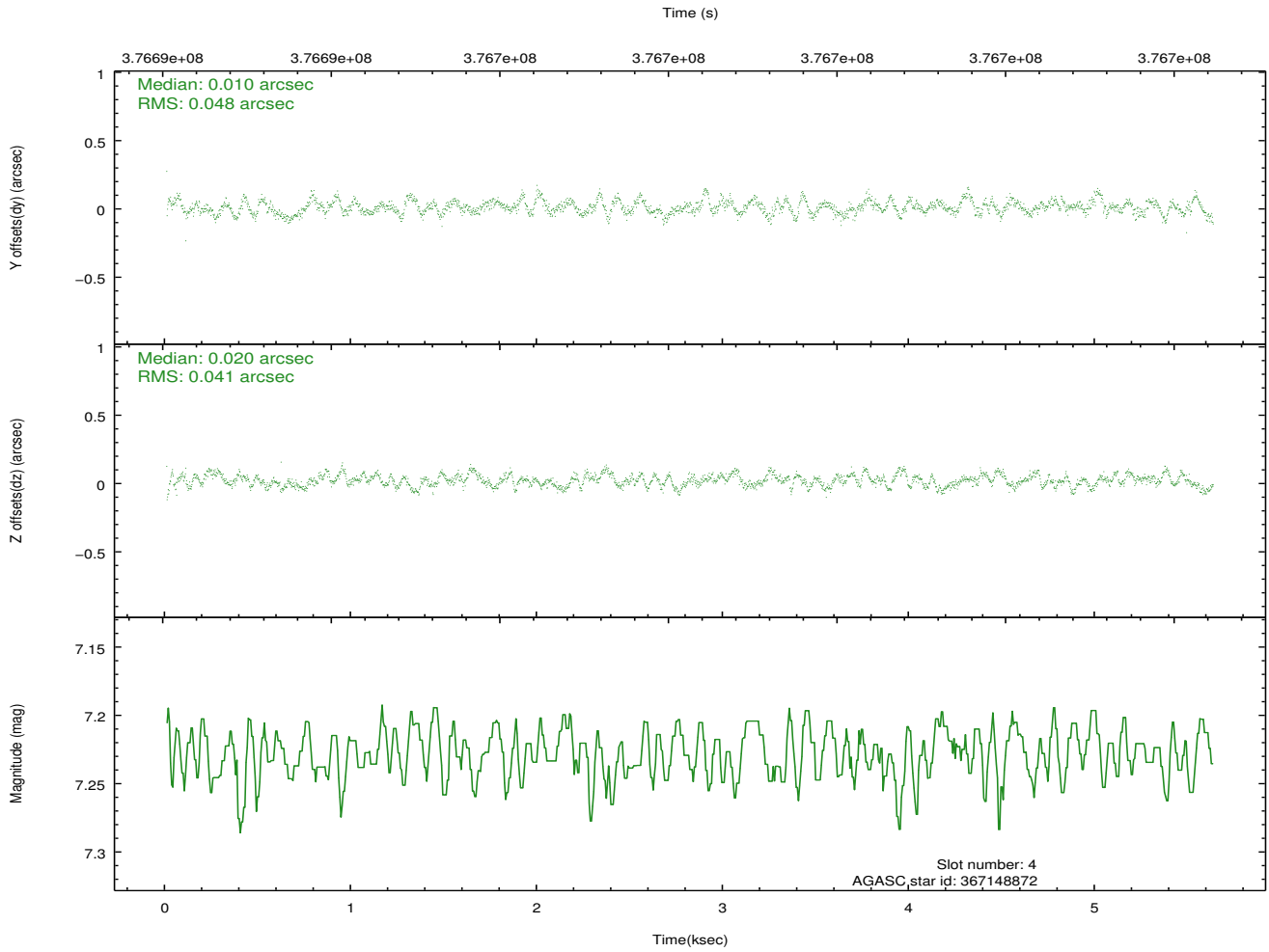
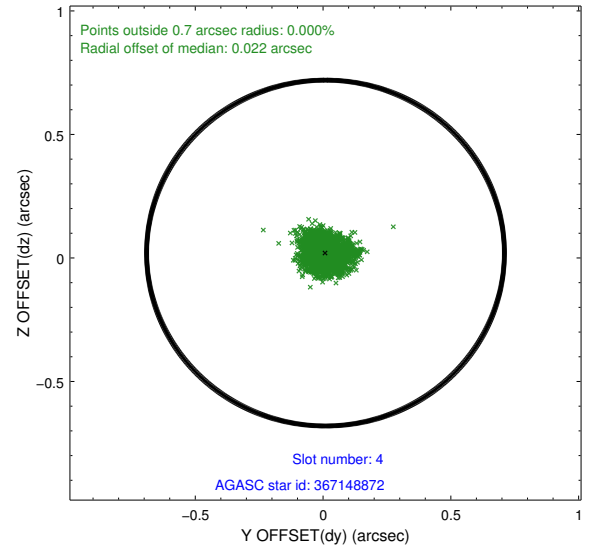
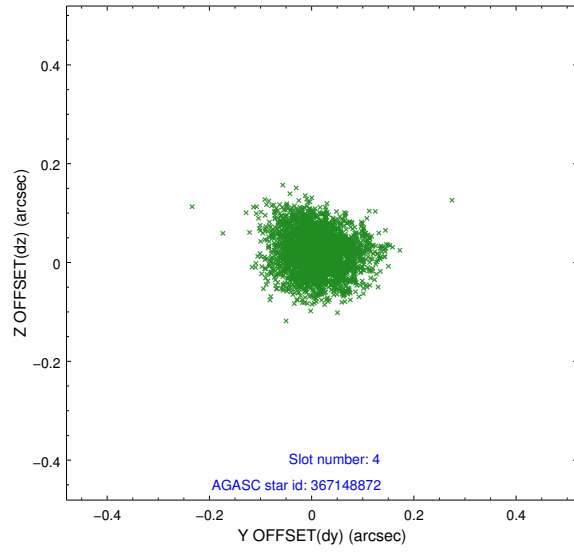
slot	status	id	mag	n_pts	med_dy	med_dz	dr1	dr2	ra	dec	mean_y	mean_z
0	FID	ACIS-I-1	7.09	1373	0.087	-0.003	0.007	0.011	0.000000	0.000000	928.13	-836.91
1	FID	ACIS-I-2	7.00	1372	-0.060	-0.065	0.016	0.026	0.000000	0.000000	-765.51	-844.01
2	FID	ACIS-I-5	7.08	1373	-0.120	0.139	0.013	0.021	0.000000	0.000000	-1820.90	1060.08
3	GUIDE	367138920	7.72	2744	0.060	-0.009	0.081	0.128	11.513485	40.808909	1794.68	2230.90
4	GUIDE	367148872	7.23	2746	0.010	0.020	0.068	0.106	10.505940	40.688258	2127.75	-531.42
5	GUIDE	367657896	9.03	2729	0.103	0.123	0.080	0.128	11.197765	41.313576	-49.25	1433.28
6	GUIDE	367663272	9.27	2744	-0.140	-0.142	0.099	0.154	10.656279	41.699429	-1493.32	26.75
7	GUIDE	367674552	8.85	2742	-0.032	0.005	0.087	0.137	11.016238	41.570845	-993.75	977.10

2.4 Star Slots

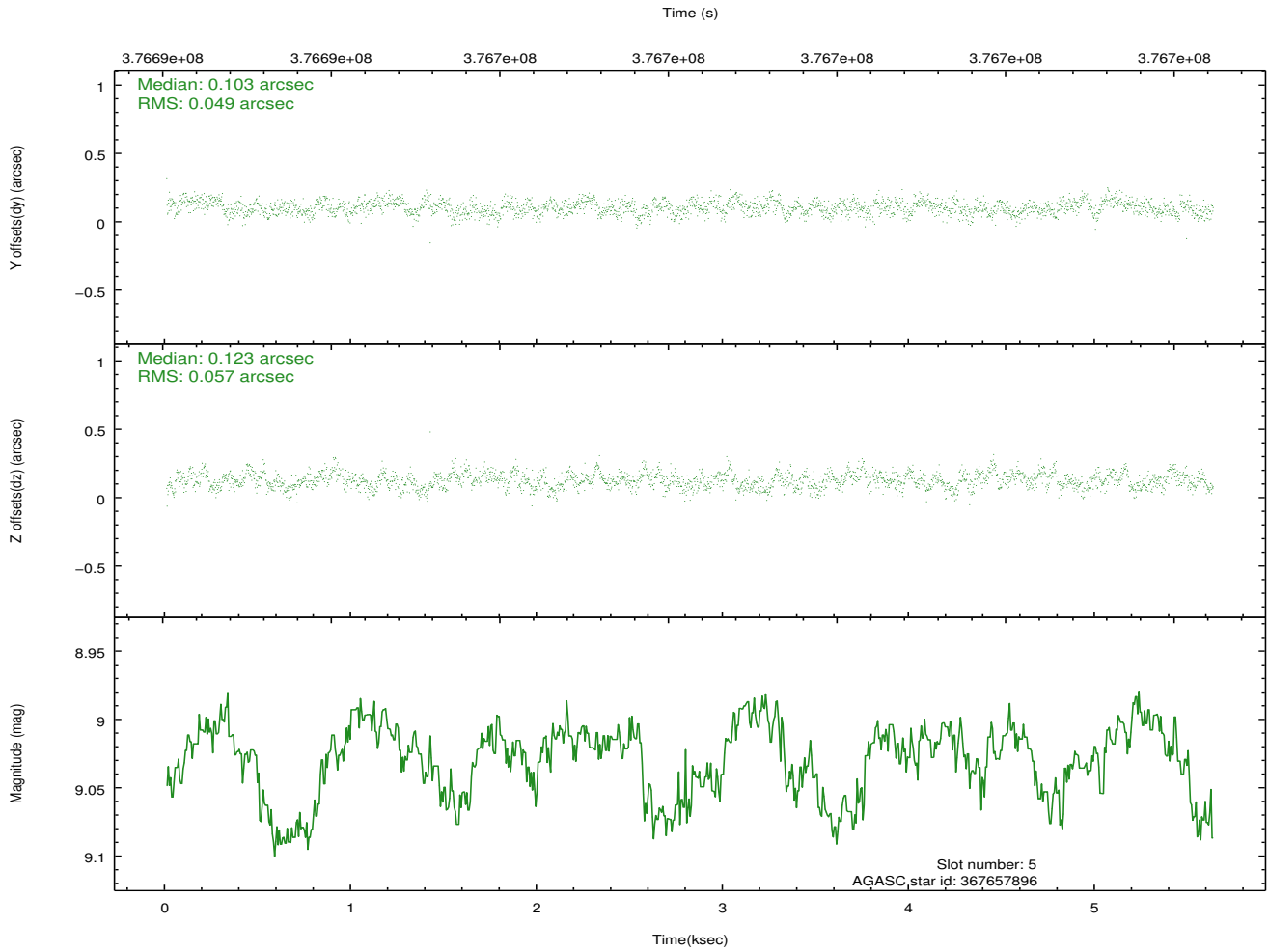
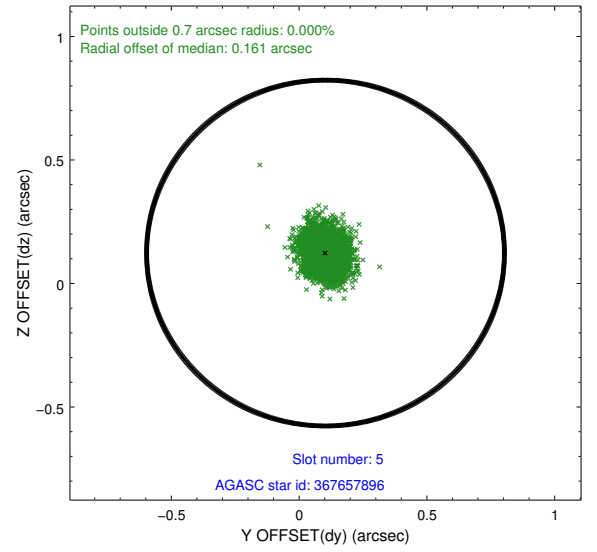
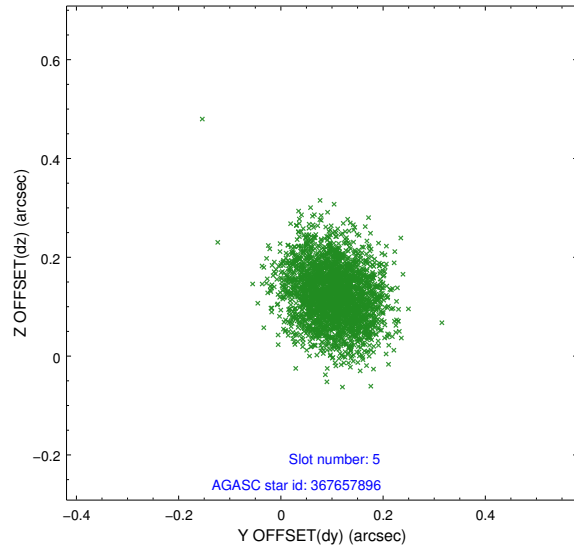
2.4.1 Slot 3



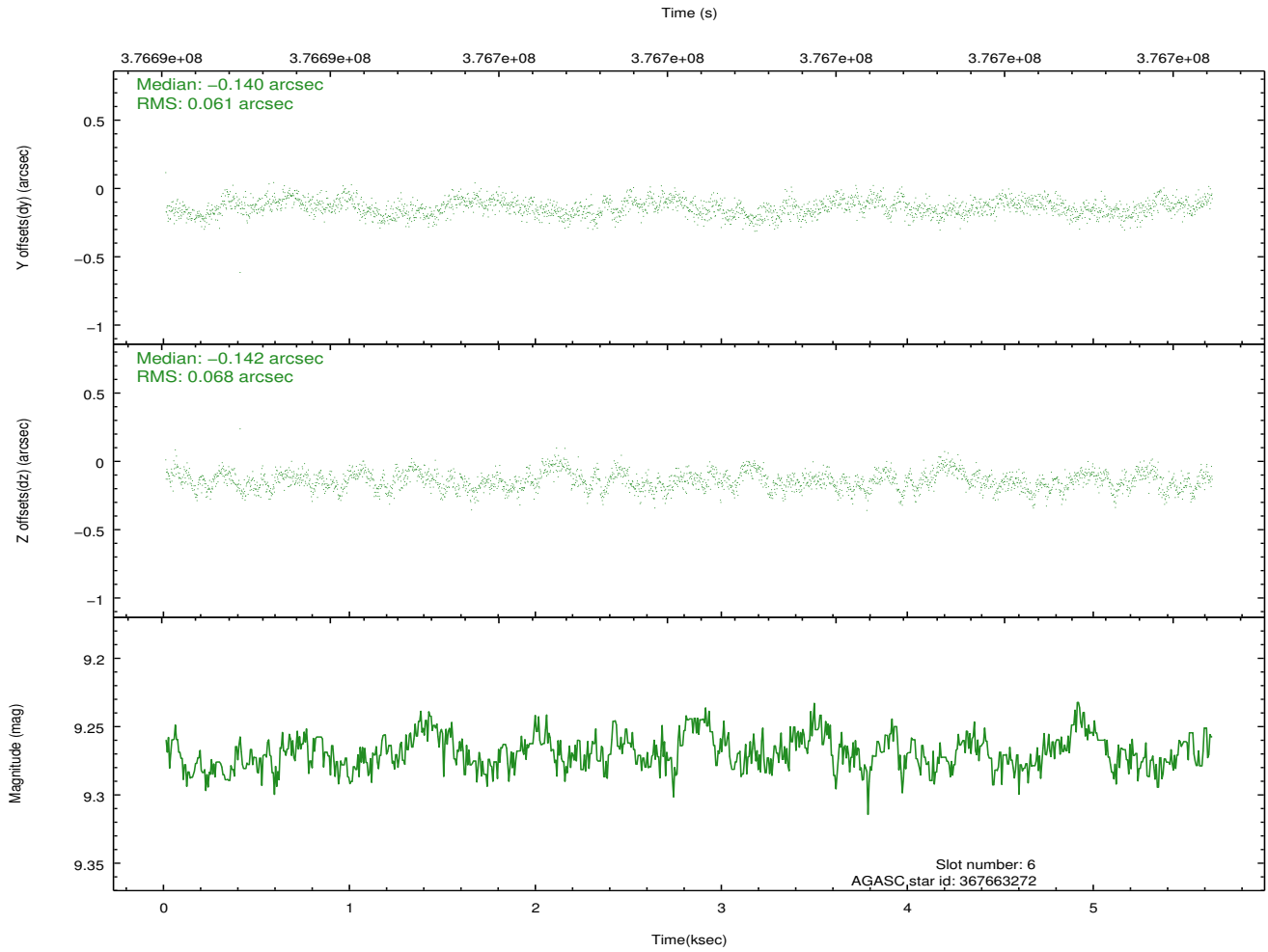
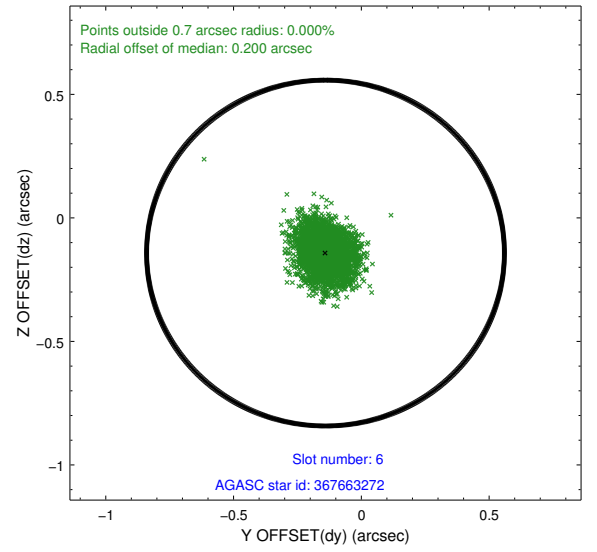
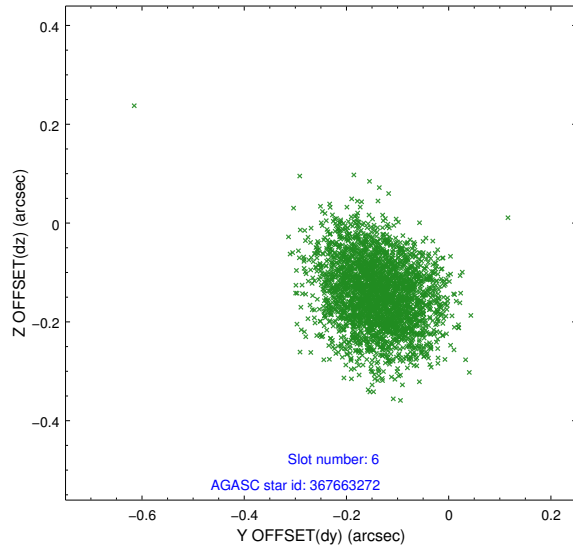
2.4.2 Slot 4



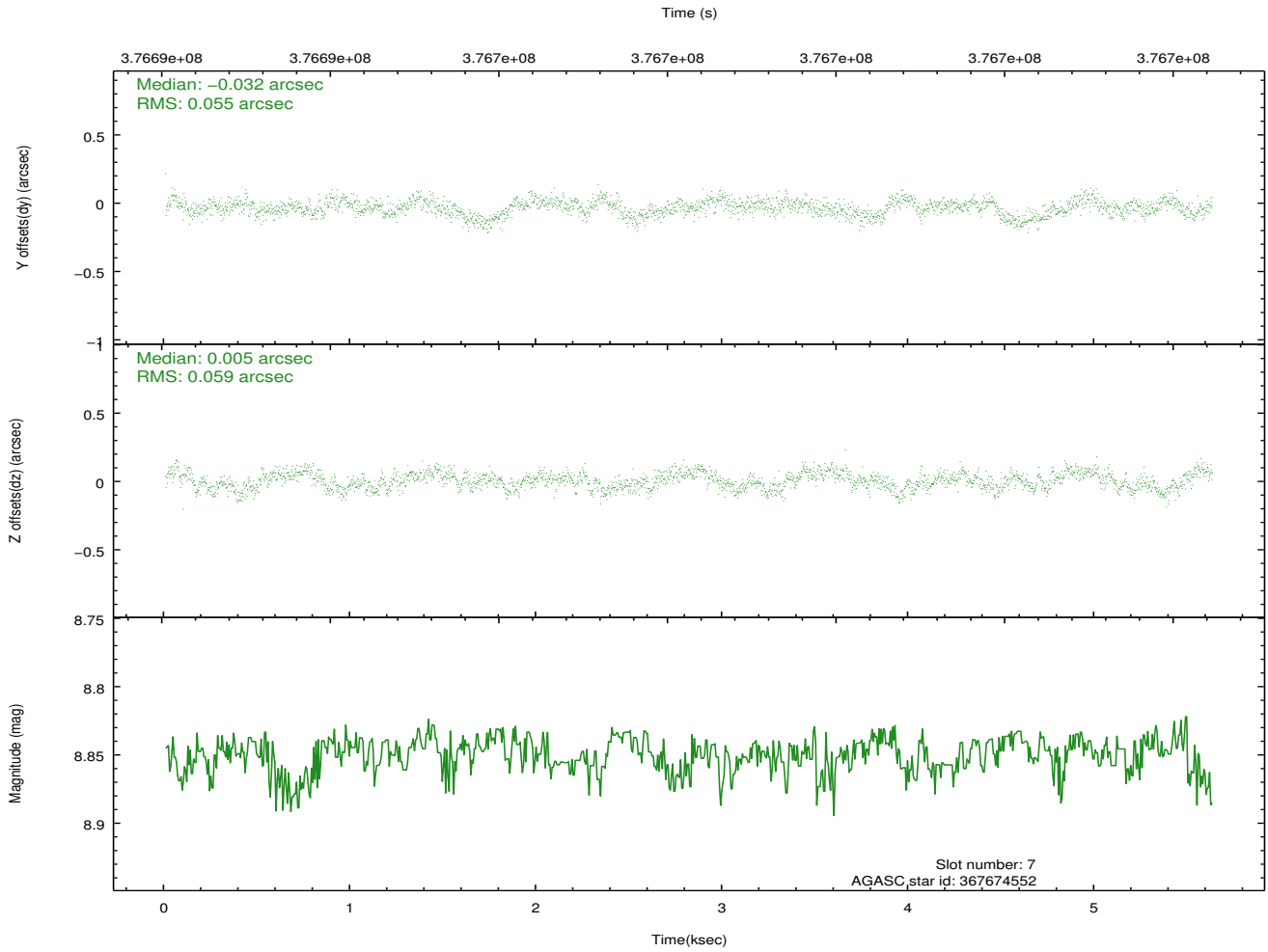
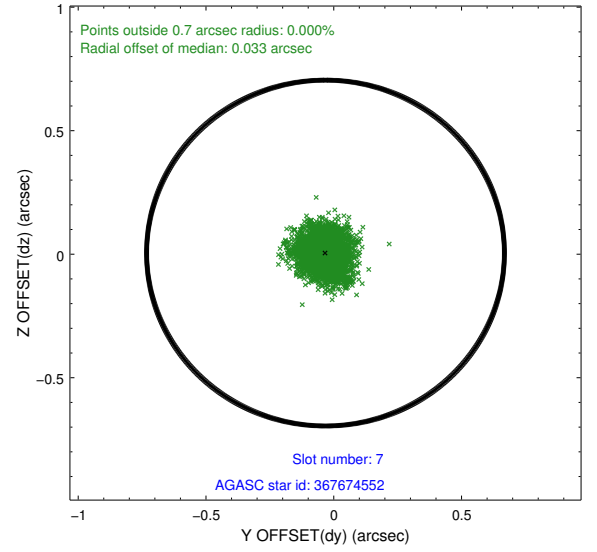
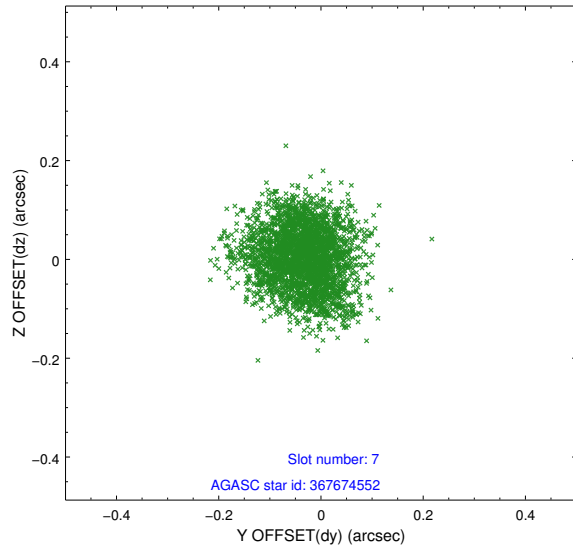
2.4.3 Slot 5



2.4.4 Slot 6

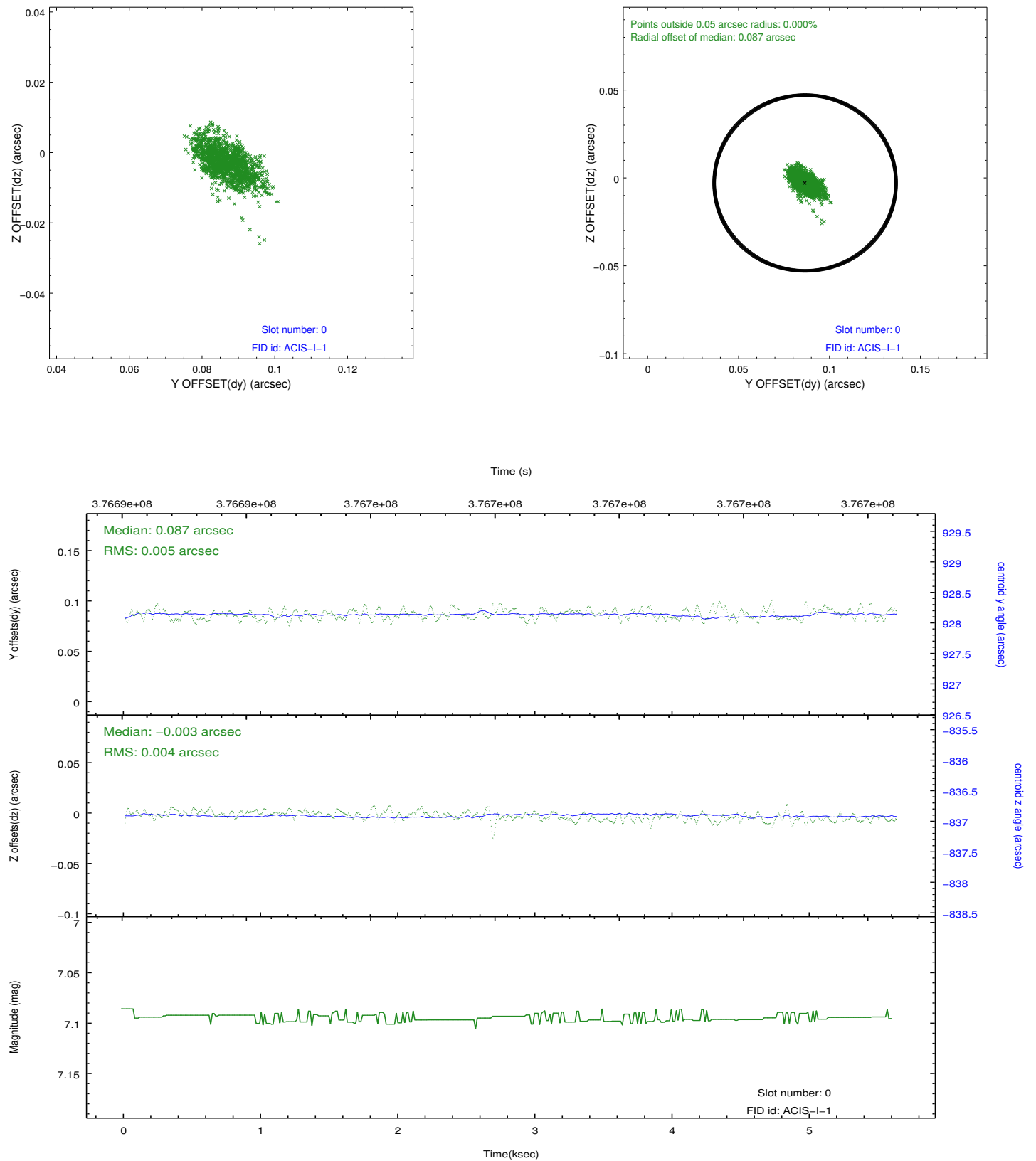


2.4.5 Slot 7

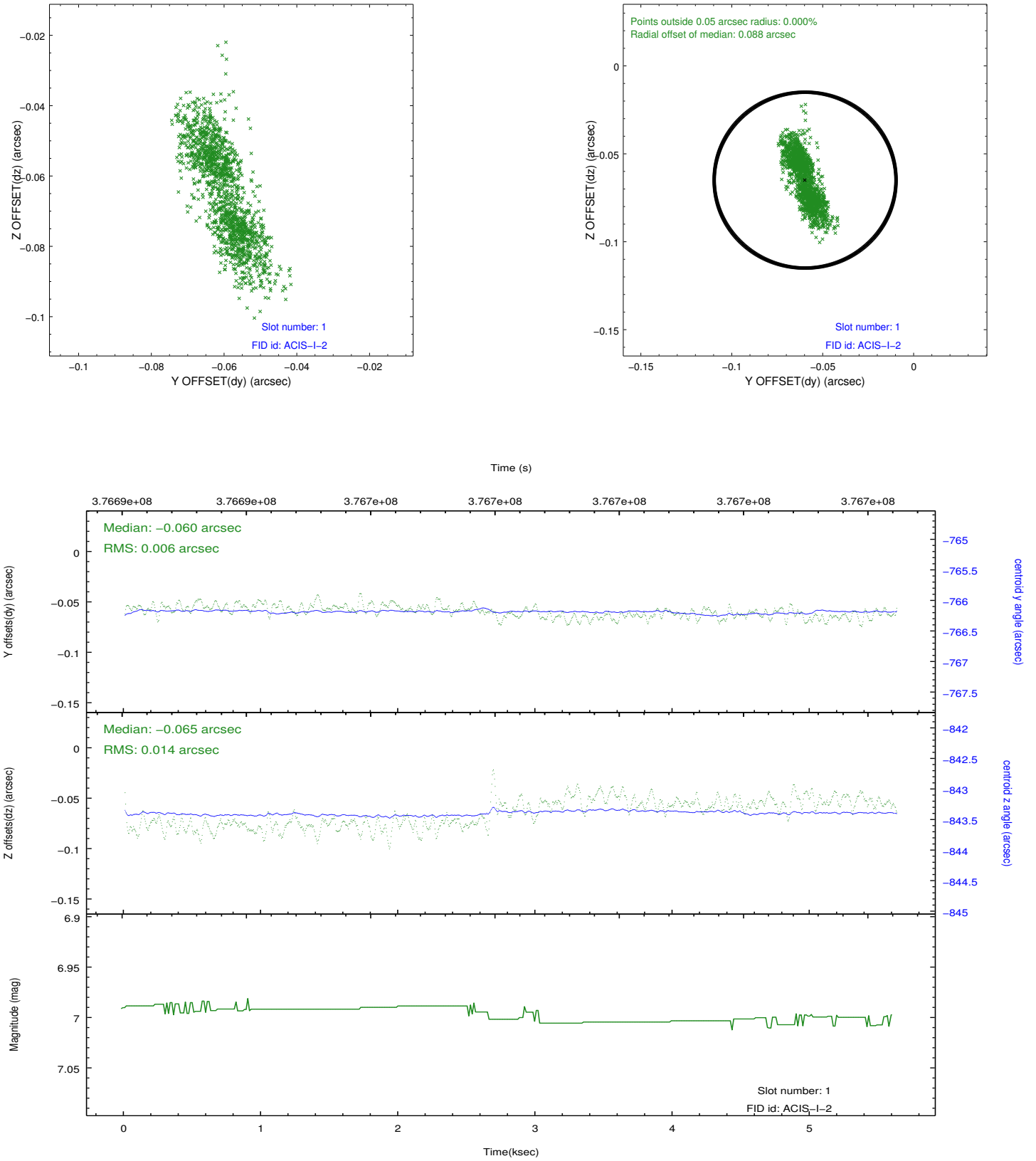


2.5 FID Slots

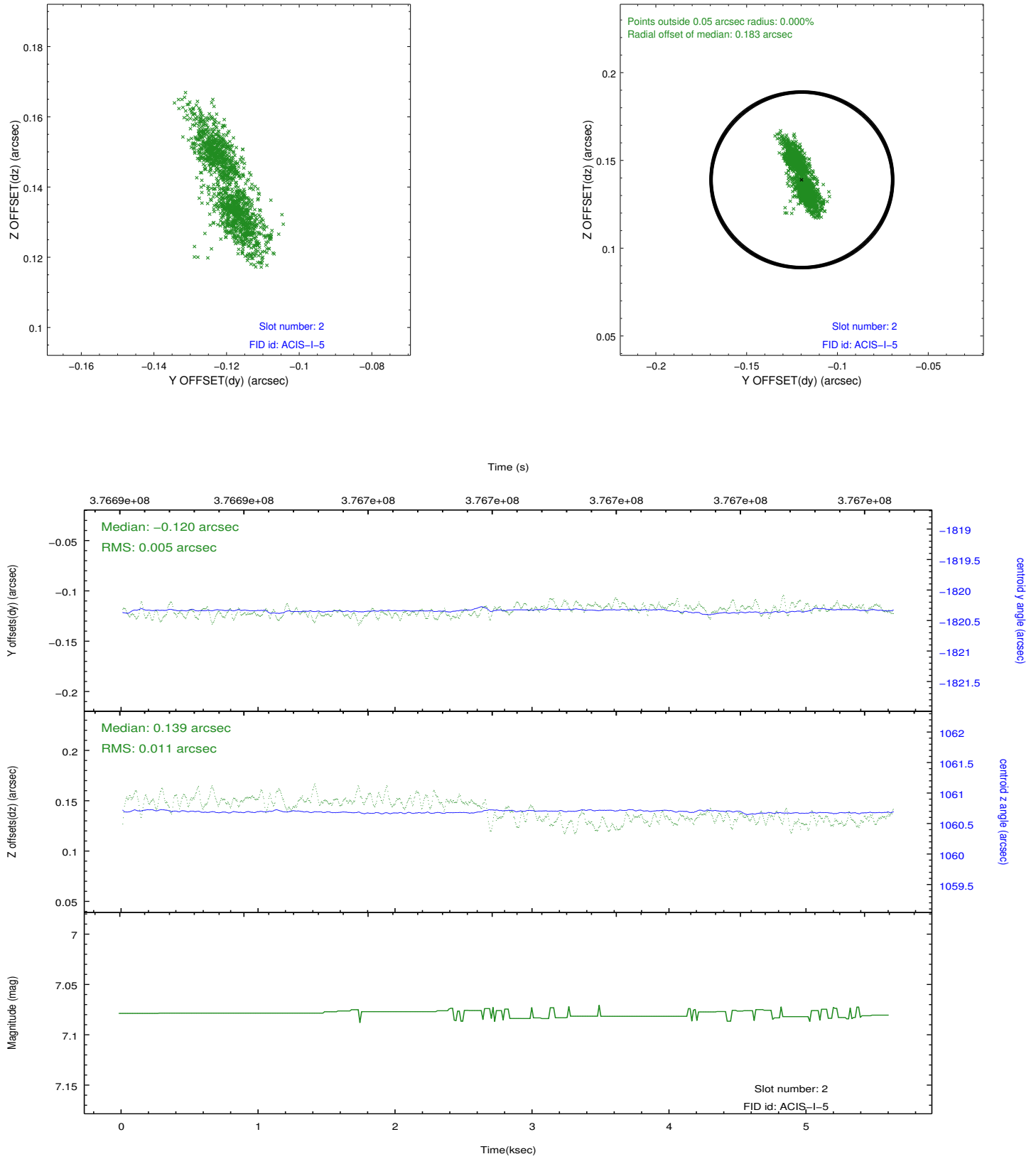
2.5.1 Slot 0



2.5.2 Slot 1



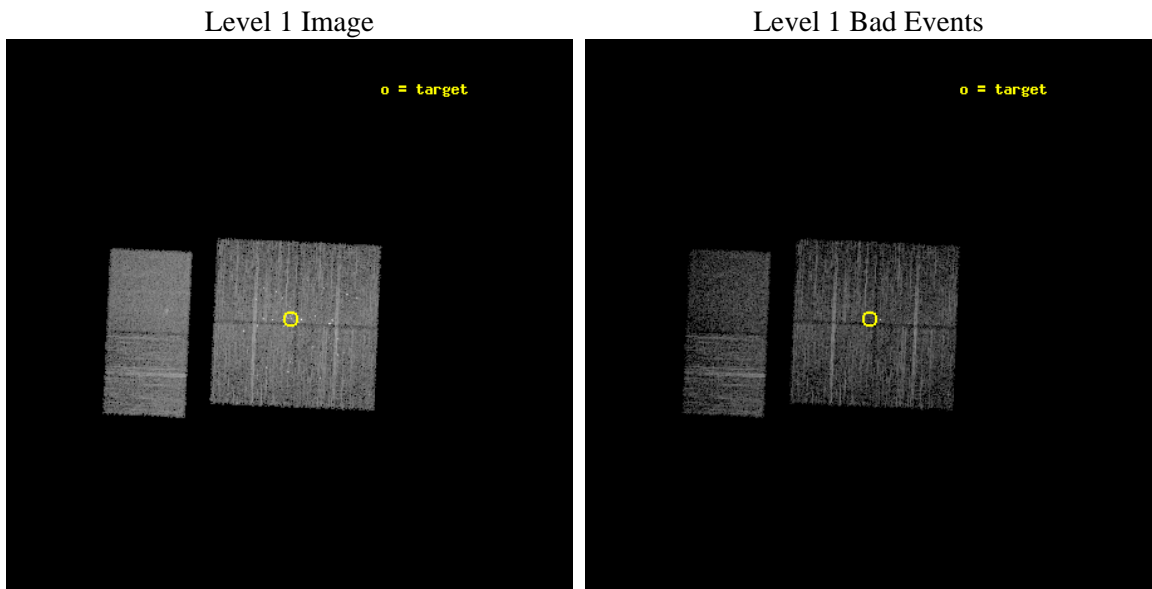
2.5.3 Slot 2



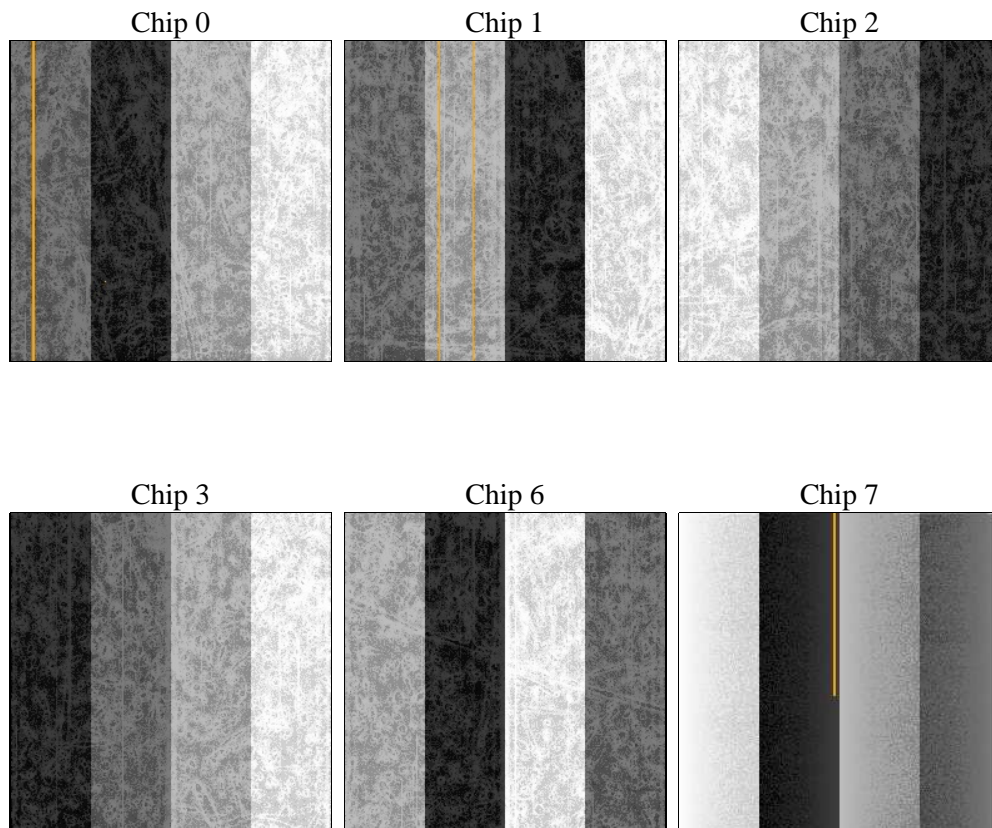
3 OBI Secondary

3.1 OBI

3.1.1 Images



3.1.2 Bias



3.1.3 Parameters

obi_num	0	Obi number	sched_exp_time	5000.000000	[s] Scheduled observation exposure time
ascdsver	8.4.5	Processing system revision	ontime	4012.5876367092	Sum of GTIs [s]
caldsver	4.4.10	 	ontime0	4012.5877471566	Sum of GTIs [s]
date	2012-06-17T17:08:27	Date and time of file creation	ontime1	4012.5875681043	Sum of GTIs [s]
revision	2	Processing version of data	ontime2	4009.3465672731	Sum of GTIs [s]
			ontime3	4012.5876367092	Sum of GTIs [s]
			ontime6	4009.346478343	Sum of GTIs [s]
			ontime7	4012.5874295235	Sum of GTIs [s]
			l1events	224099	Number of level 1 events

3.1.4 Events

	ccd 0	ccd 1	ccd 2	ccd 3	ccd 6	ccd 7		ccd 0	ccd 1	ccd 2	ccd 3	ccd 6	ccd 7
level 1 events	34222	36942	37459	38562	36269	40645	grade 0 events	2355	4275	3069	4312	1349	1711
rejected events	29313	29249	31874	31399	32437	22205		6%	11%	8%	11%	3%	4%
rejected %	85%	79%	85%	81%	89%	54%	grade 1 events	25	142	42	67	14	65
								0%	0%	0%	0%	0%	0%
							grade 2 events	978	1382	974	1100	839	3783
								2%	3%	2%	2%	2%	9%
							grade 3 events	446	557	439	494	437	1604
								1%	1%	1%	1%	1%	3%
							grade 4 events	418	569	417	463	361	1636
								1%	1%	1%	1%	0%	4%
							grade 5 events	1331	1578	1235	1547	1511	4249
								3%	4%	3%	4%	4%	10%
							grade 6 events	720	919	701	804	854	9735
								2%	2%	1%	2%	2%	23%
							grade 7 events	27949	27520	30582	29775	30904	17862
								81%	74%	81%	77%	85%	43%

A Summary

A.1 Status

V&V Scientist	Jen Lauer
V&V Date (YYYY-MM-DD)	2012.06.21
V&V Edition	1
V&V Disposition and Status	OK
V&V Charge Time	4.95032183367011

A.2 Comments

Joint proposal with HST.