

V&V Reference Report

L2 ASCDS Version : 8.4.5

Observation 12059 - L2 Version 3
Chandra X-Ray Center

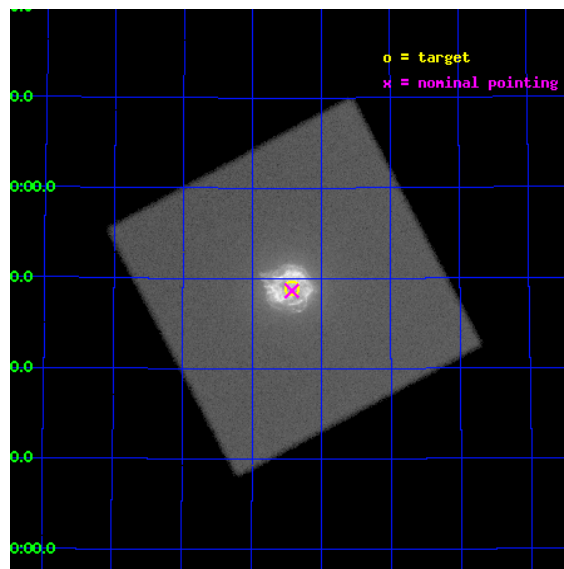
L2 Processing Date : Aug 13 2012

Contents

1	Front	2
2	OBI	3
2.1	OBI	3
2.1.1	Images	3
2.1.2	Parameters	4
2.1.3	Events	4
2.2	Compared Parameters	5
2.3	Aspect	6
2.4	Star Slots	9
2.4.1	Slot 3	9
2.4.2	Slot 4	10
2.4.3	Slot 5	11
2.4.4	Slot 6	12
2.4.5	Slot 7	13
2.5	FID Slots	14
2.5.1	Slot 0	14
2.5.2	Slot 1	15
2.5.3	Slot 2	16
A	Summary	17
A.1	Status	17
A.2	Comments	17

1 Front

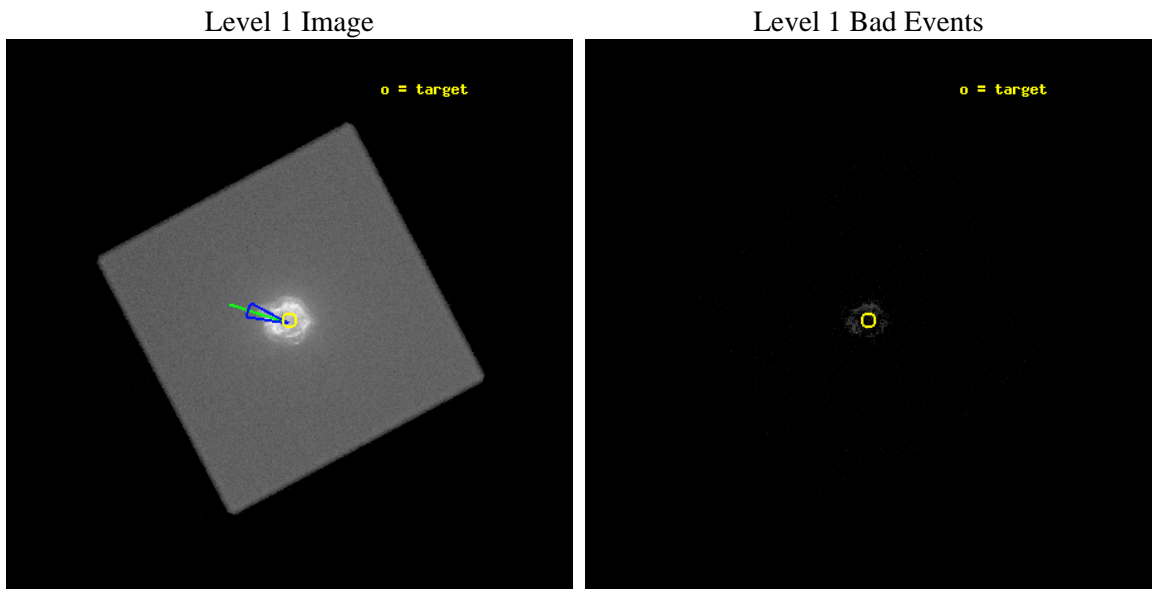
seq_num	501325	Sequence number
obs_id	12059	Observation id
title	The Proper Motion of the Central Compact Object in Cassiopeia A	Pr
observer	Dr. Tracey DeLaney	Principal investigator
object	Cassiopeia A	Source name
ra_targ	350.8575	Observer's specified target RA [deg]
dec_targ	58.814833	Observer's specified target Dec [deg]
ra_nom	350.85683078924	Nominal RA [deg]
dec_nom	58.810583998447	Nominal Dec [deg]
roll_nom	287.03510731877	Nominal Roll [deg]
revision	3	Processing version of data
ontime	14186.000716746	[s]
liveltime	12294.435690247	Ontime multiplied by DTCOR
l2events	2126290	Number of level 2 events



2 OBI

2.1 OBI

2.1.1 Images



2.1.2 Parameters

obi_num	0	Obi number	sched_exp_time	14000.000000	[s] Scheduled observation exposure time
ascdsver	8.4.5	Processing system revision	ontime	14186.000716746	[s]
caldbver	4.5.1.1	 	l1events	2650100	Number of level 1 events
date	2012-08-13T19:38:36	Date and time of file creation			
revision	3	Processing version of data			

2.1.3 Events

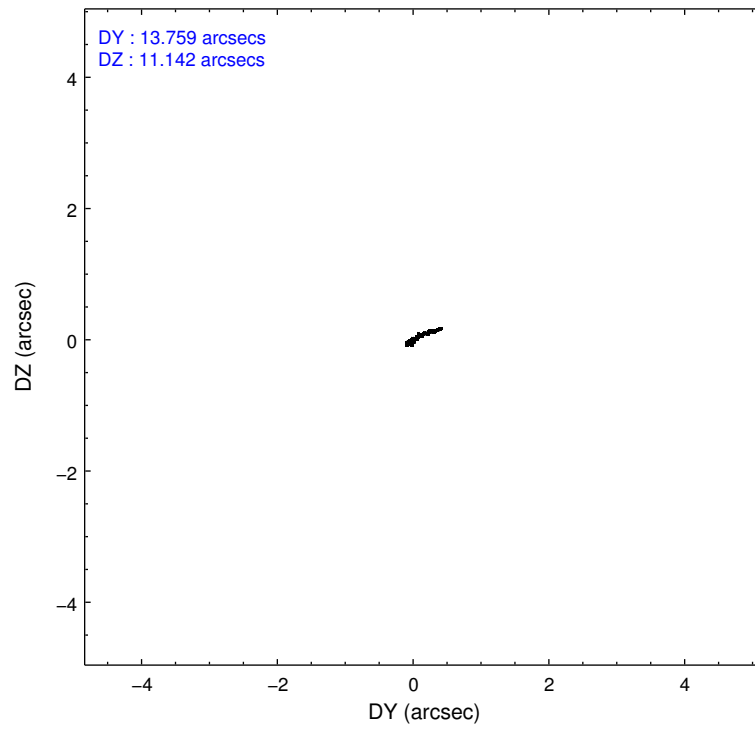
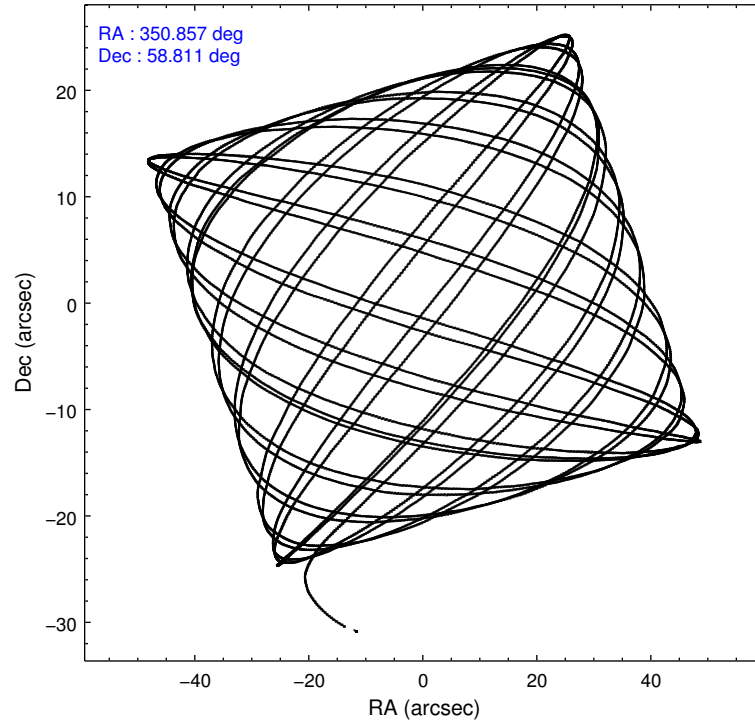
Level 1 Events

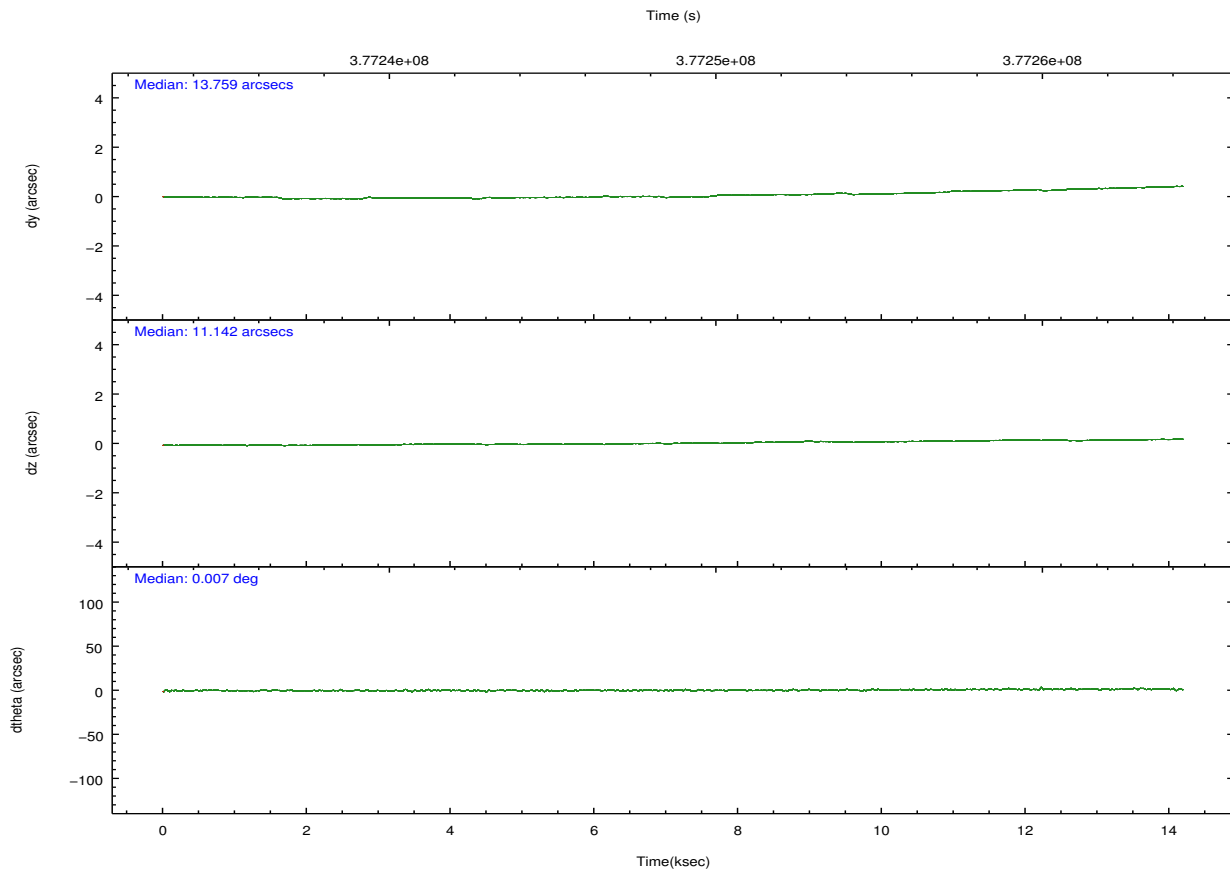
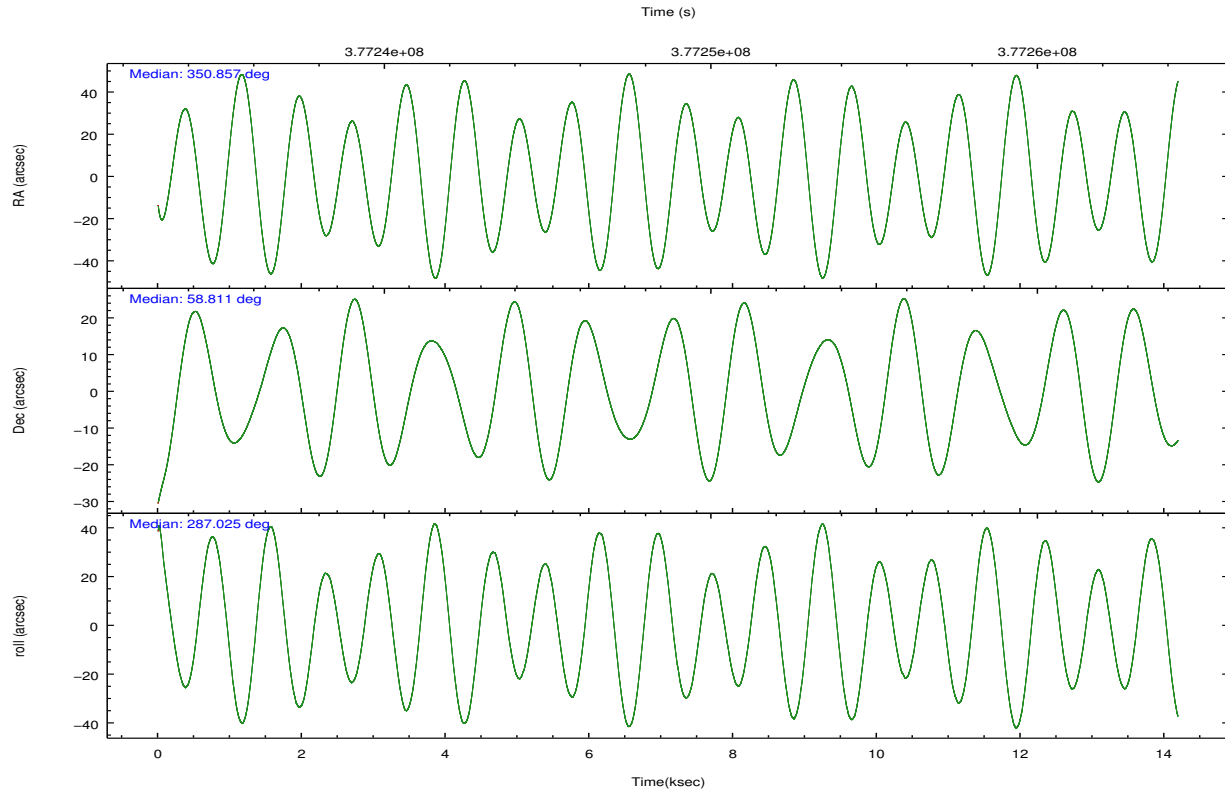
	segment 0
level 1 events	2650100
rejected events	34330
rejected %	1%

2.2 Compared Parameters

Parameter	Planned	Actual	Parameter	Planned	Actual
Instrument	HRC	HRC	Obspar format version number	7	7
Detector	HRC-I	HRC-I	Obspar file type	PREDICTED	ACTUAL
Grating	NONE	NONE	Obspar update status	NONE	UPDATED
Data mode	OBSERVING	OBSERVING			
Observation mode	POINTING	POINTING			
[deg] Pointing RA	350.817578	350.8568307892416			
[deg] Pointing Dec	58.828683	58.81058399844714			
[deg] Pointing Roll	287.164156	287.0351073187674			
[deg] Roll angle	287.130000	287.130000			
[deg] Roll tolerance	10.000000	10.000000			
Roll constraint allows 180D rotation	N	N			
[mm] SIM focus pos	-1.040293	-1.038866356238299			
[mm] SIM defocus	0	0.001426264420575141			
[mm] SIM translation stage pos	126.985494	126.9854943052878			
[mm] SIM translation stage offset	0	-5.413686238853188e-06			
[s] Observation start time (MET)	377242436.184000	377241529.32594			
Observation start date	2009-12-15T05:32:50	2009-12-15T05:18:49			
[s] Observation end time (MET)	377256436.184000	377257345.58924			
Observation end date	2009-12-15T09:26:10	2009-12-15T09:42:25			

2.3 Aspect



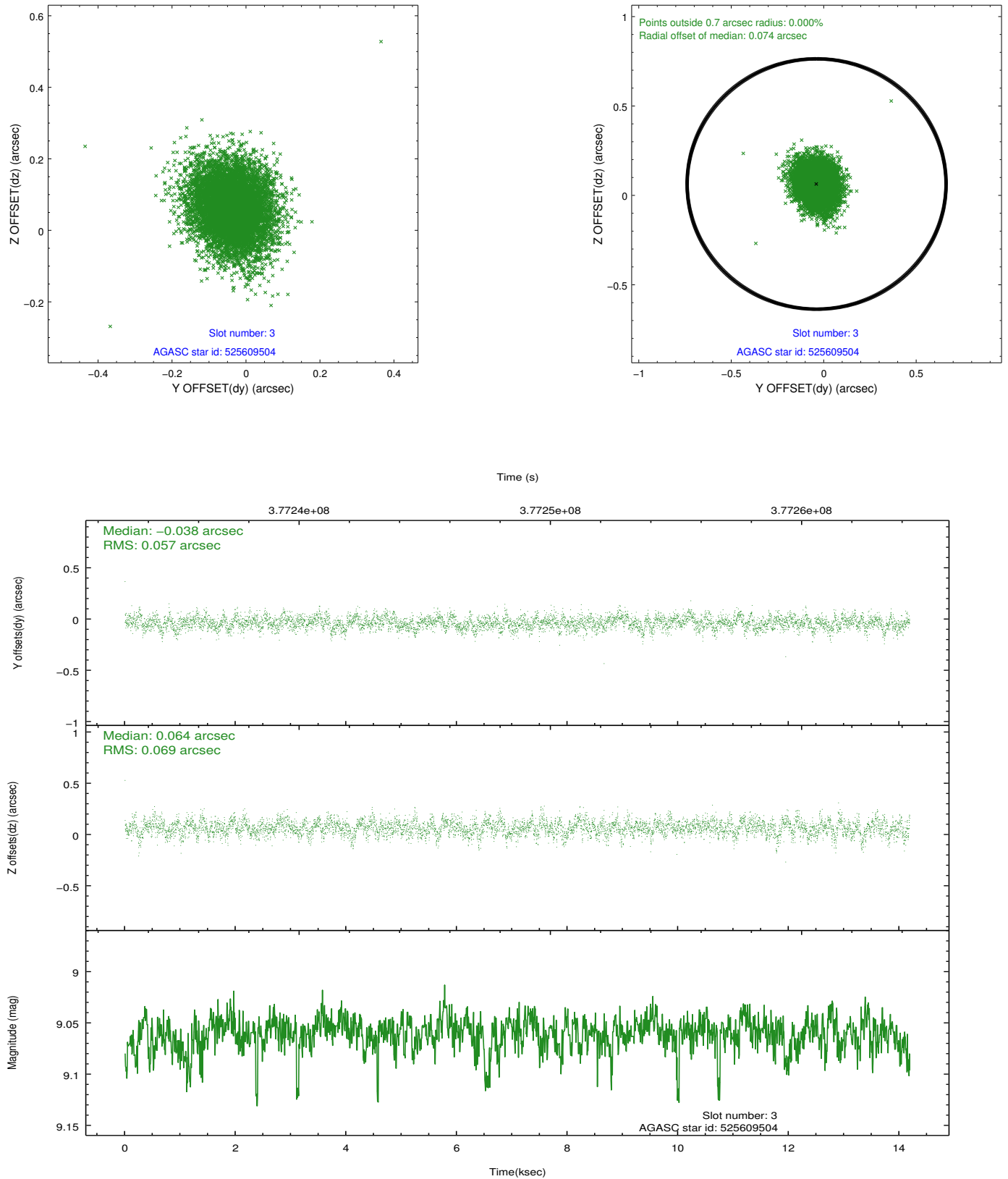


Slot Statistics

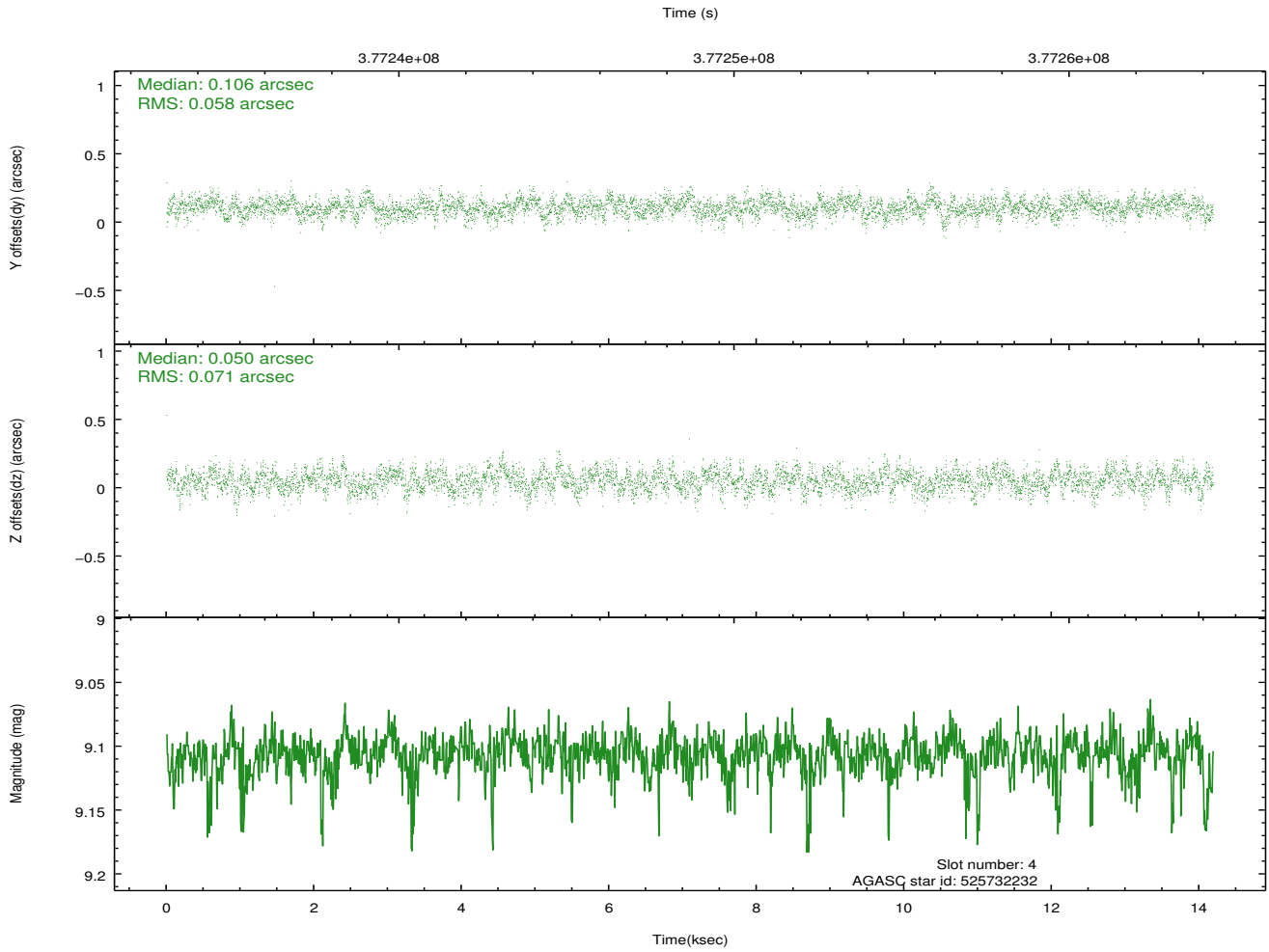
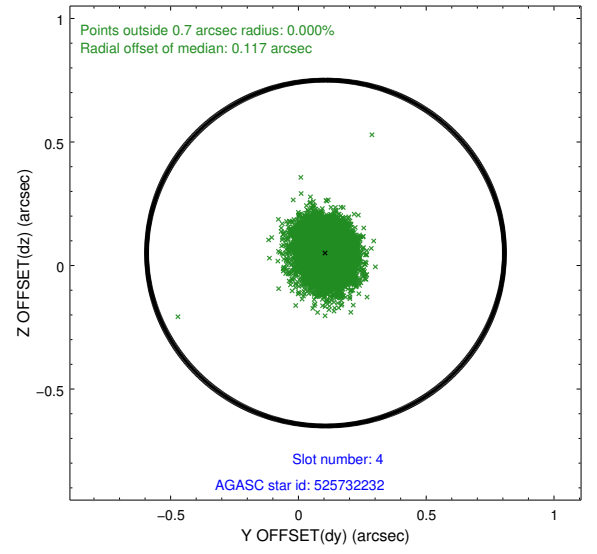
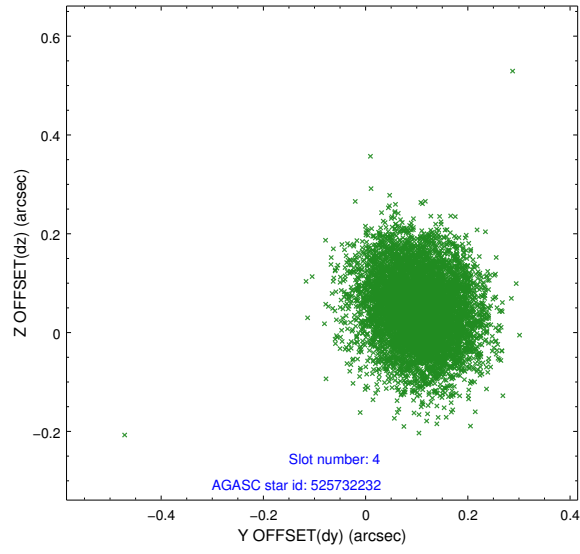
slot	status	id	mag	n_pts	med_dy	med_dz	dr1	dr2	ra	dec	mean_y	mean_z
0	FID	HRC-I-1	6.97	3461	-0.083	0.001	0.007	0.011	0.000000	0.000000	-769.65	-1299.21
1	FID	HRC-I-2	7.00	3458	0.234	-0.118	0.007	0.013	0.000000	0.000000	843.08	-1301.23
2	FID	HRC-I-3	7.06	3461	-0.032	0.028	0.007	0.013	0.000000	0.000000	-1197.90	1005.00
3	GUIDE	525609504	9.06	6899	-0.038	0.064	0.093	0.156	349.896632	58.356658	1099.43	-2159.68
4	GUIDE	525732232	9.11	6912	0.106	0.050	0.097	0.156	351.669550	58.757012	708.01	1447.70
5	GUIDE	525732488	8.41	6918	-0.011	0.010	0.078	0.126	350.087090	58.516915	660.58	-1640.51
6	GUIDE	525735456	7.06	6922	-0.090	-0.077	0.067	0.103	350.628183	59.307249	-1749.04	175.55
7	GUIDE	525735976	8.85	6909	0.036	-0.046	0.088	0.144	350.142956	58.277622	1512.91	-1803.31

2.4 Star Slots

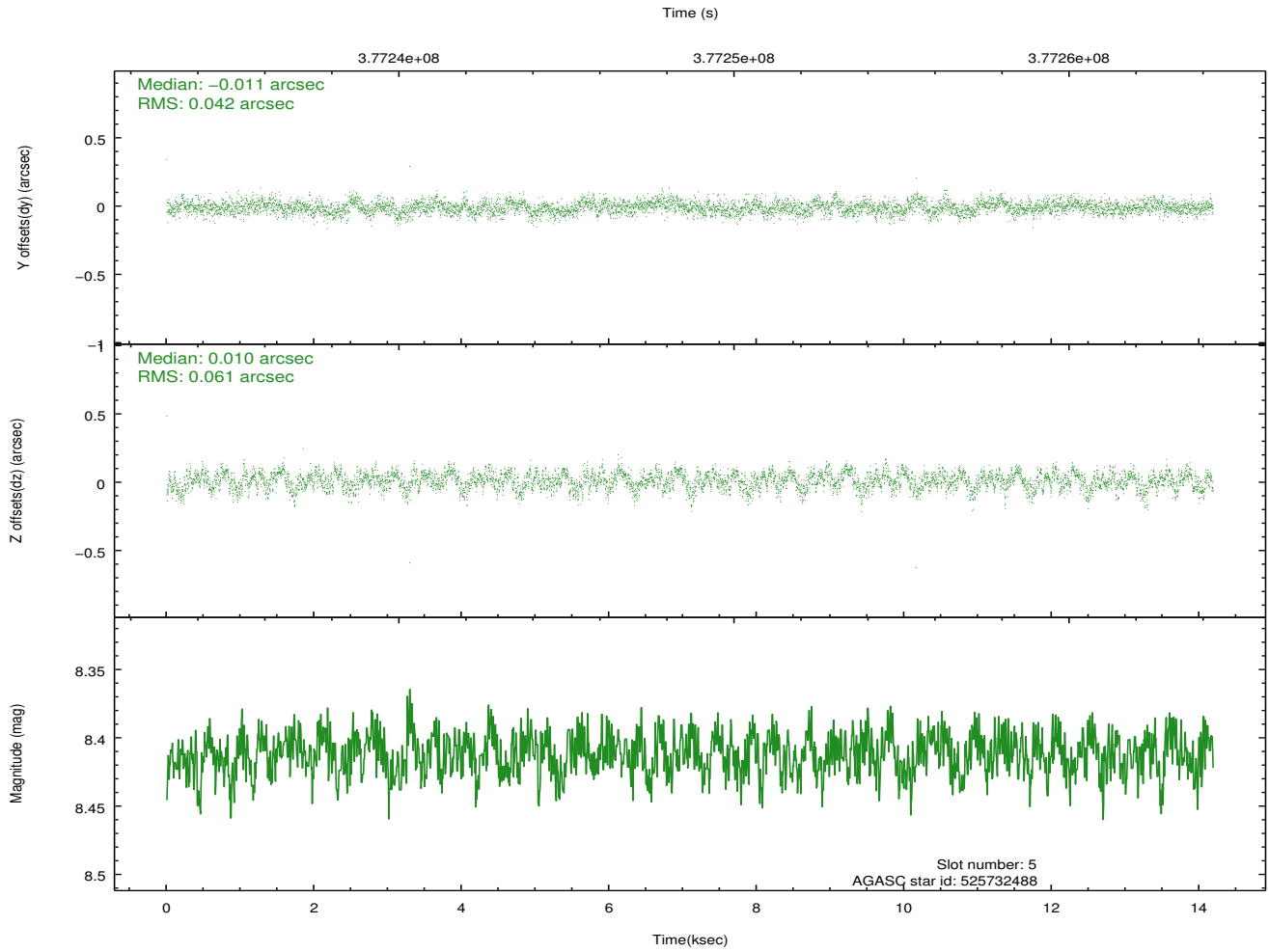
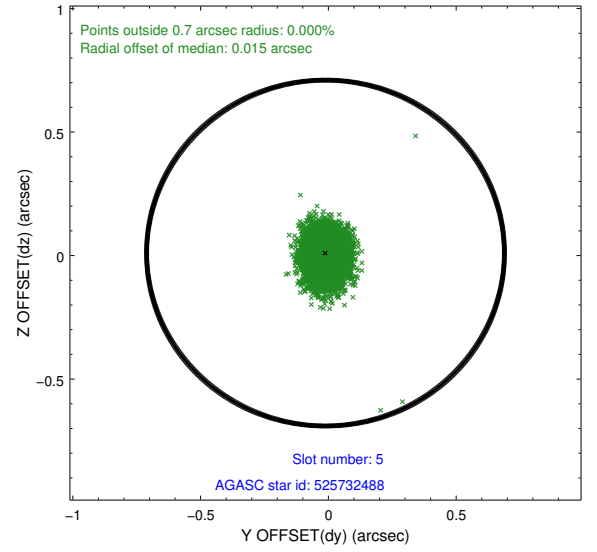
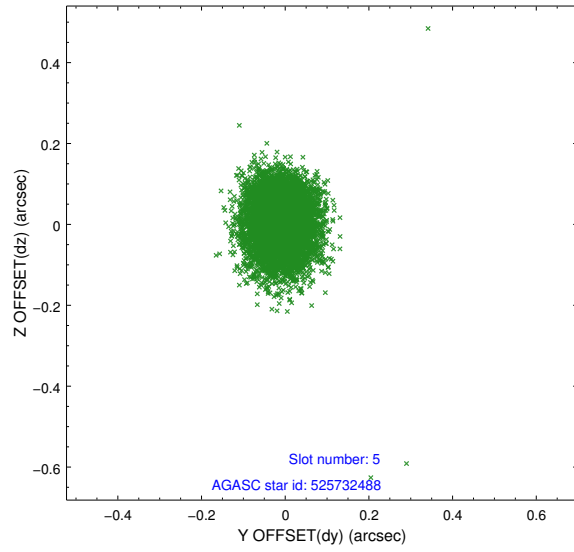
2.4.1 Slot 3



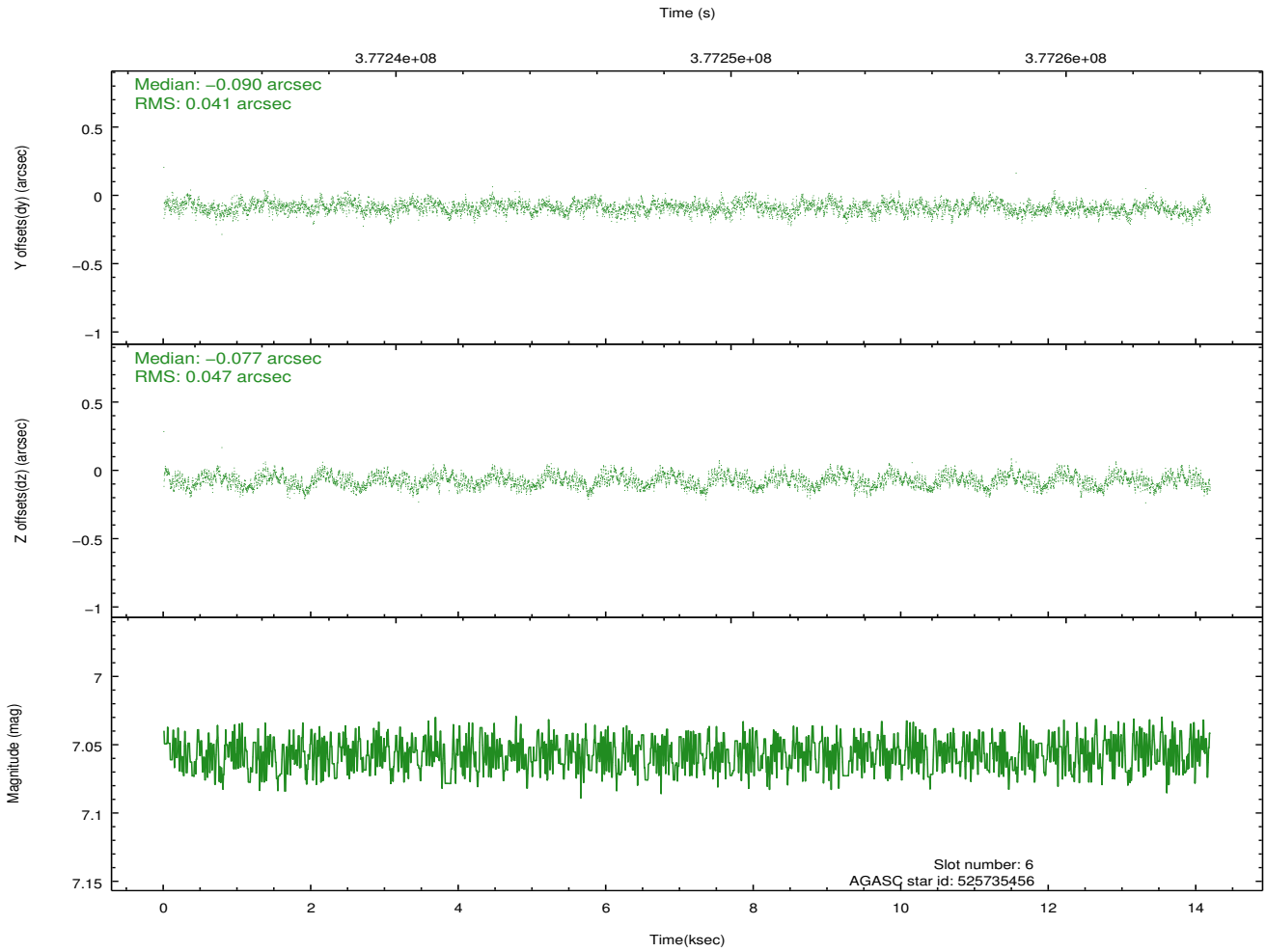
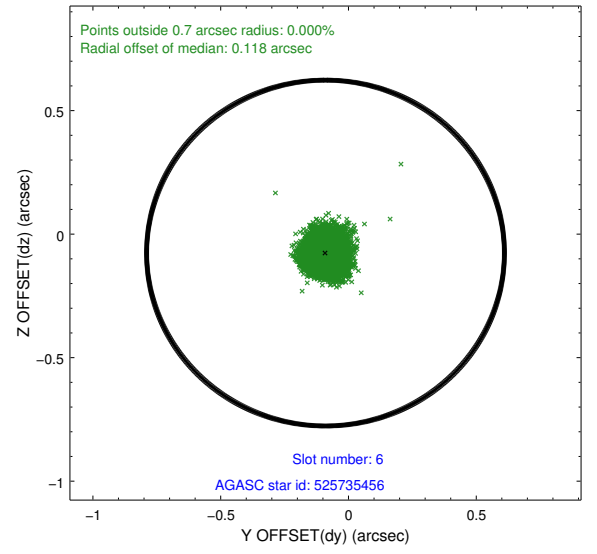
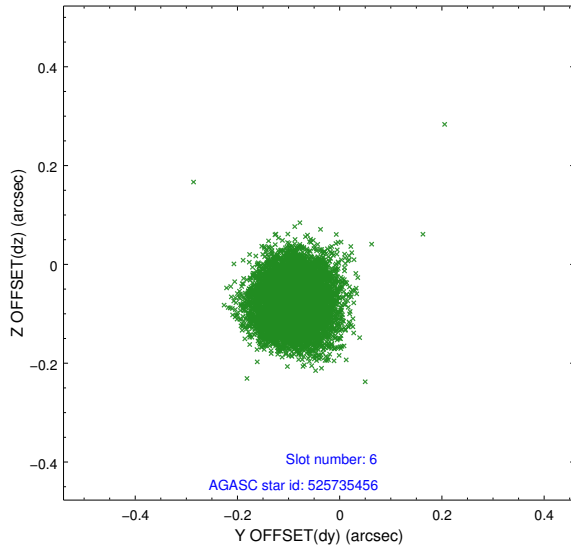
2.4.2 Slot 4



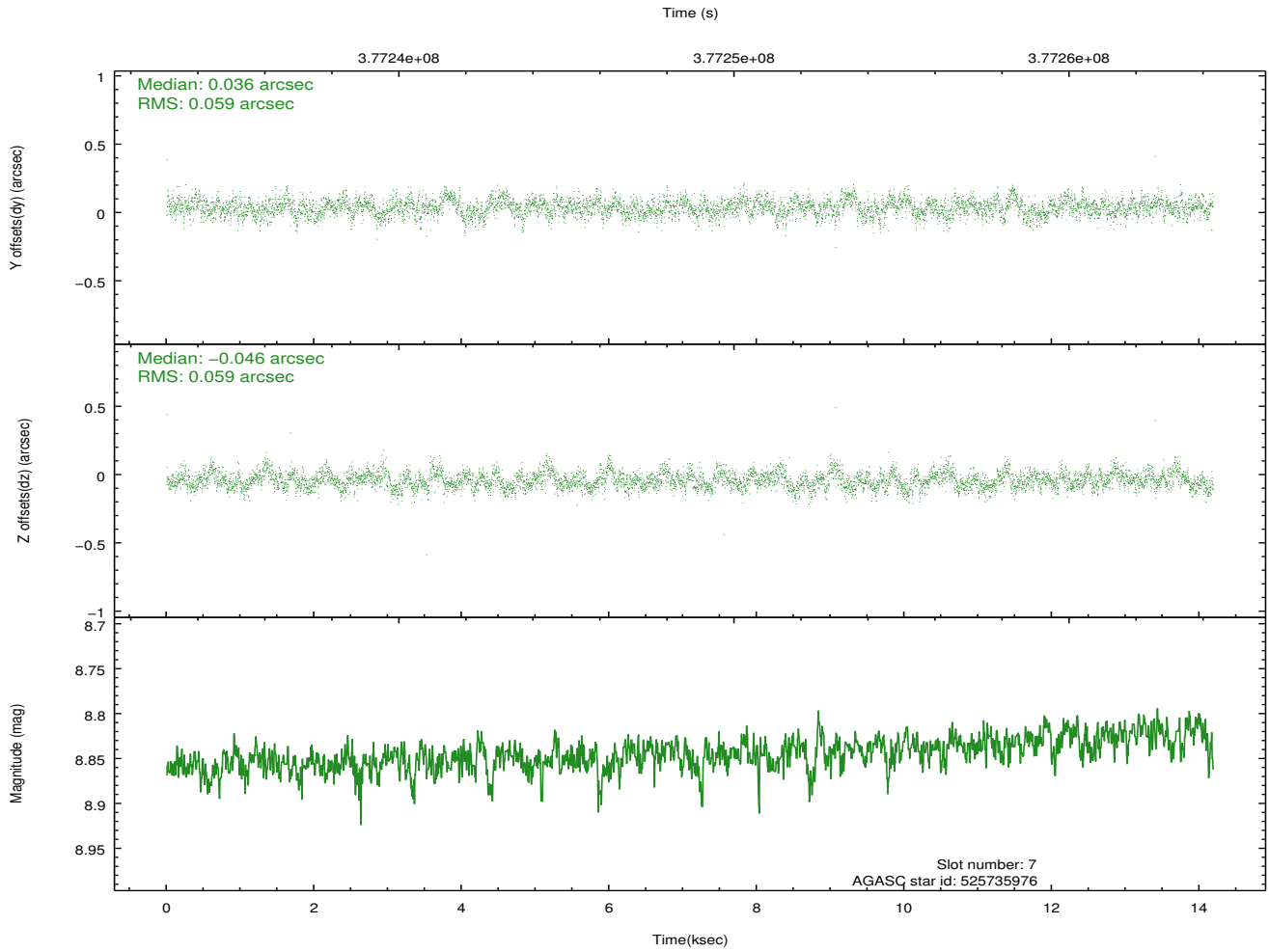
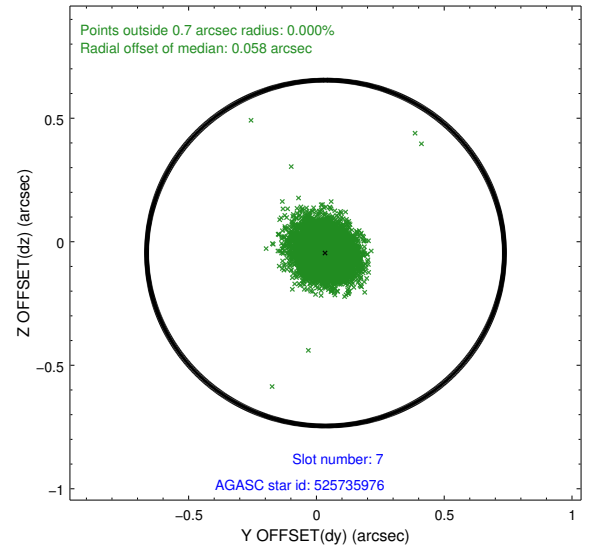
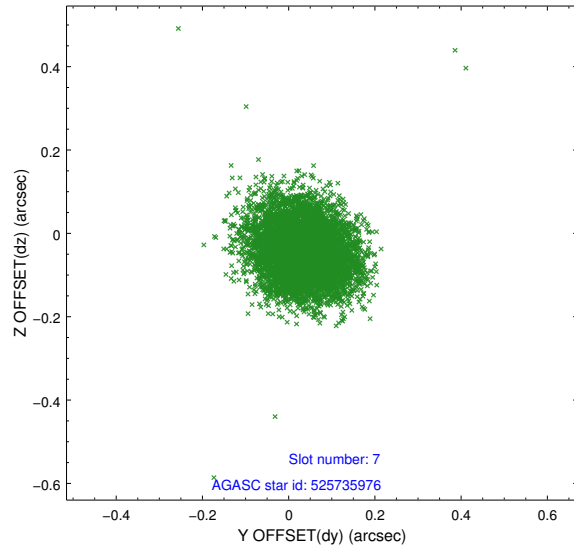
2.4.3 Slot 5



2.4.4 Slot 6

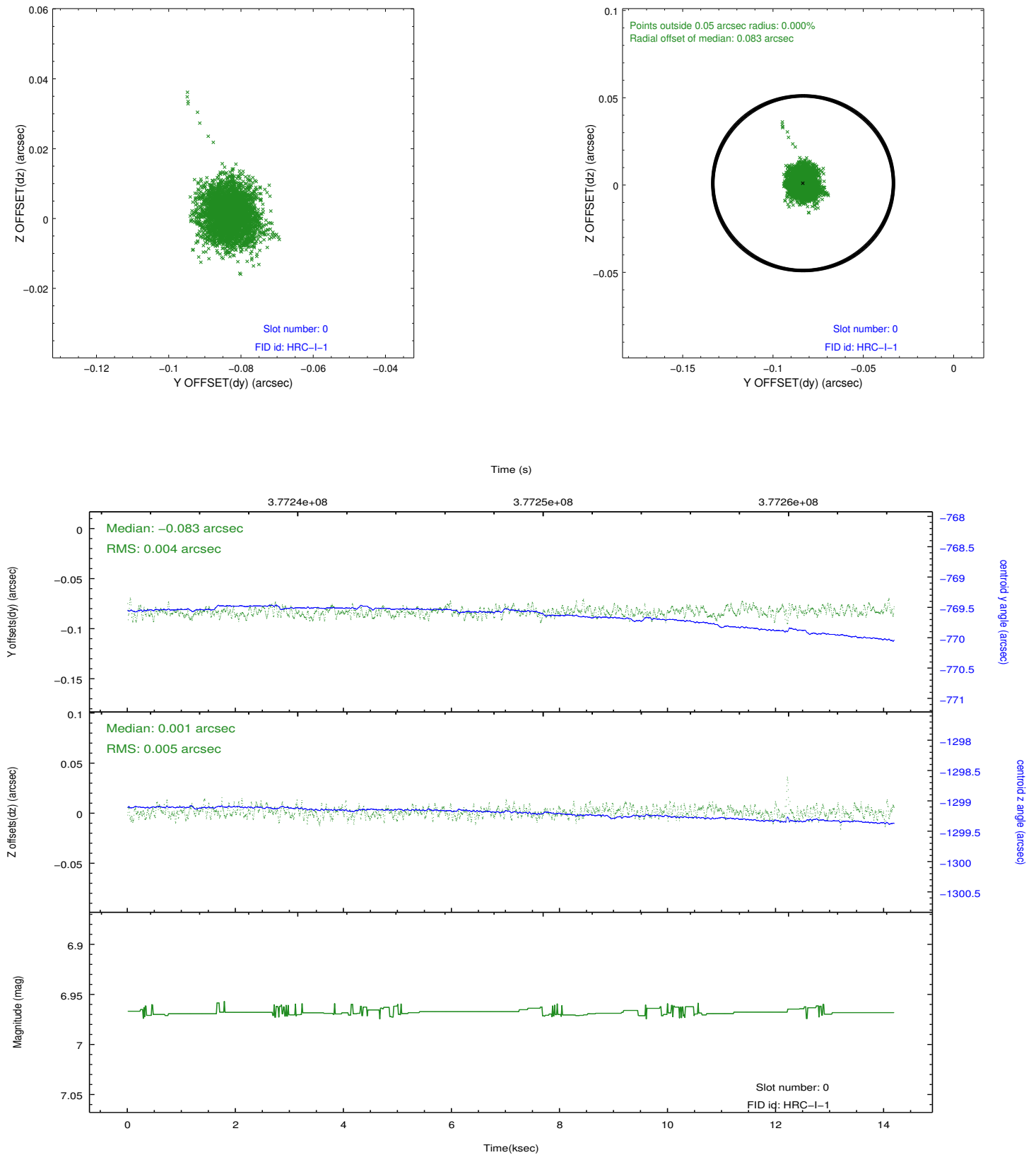


2.4.5 Slot 7

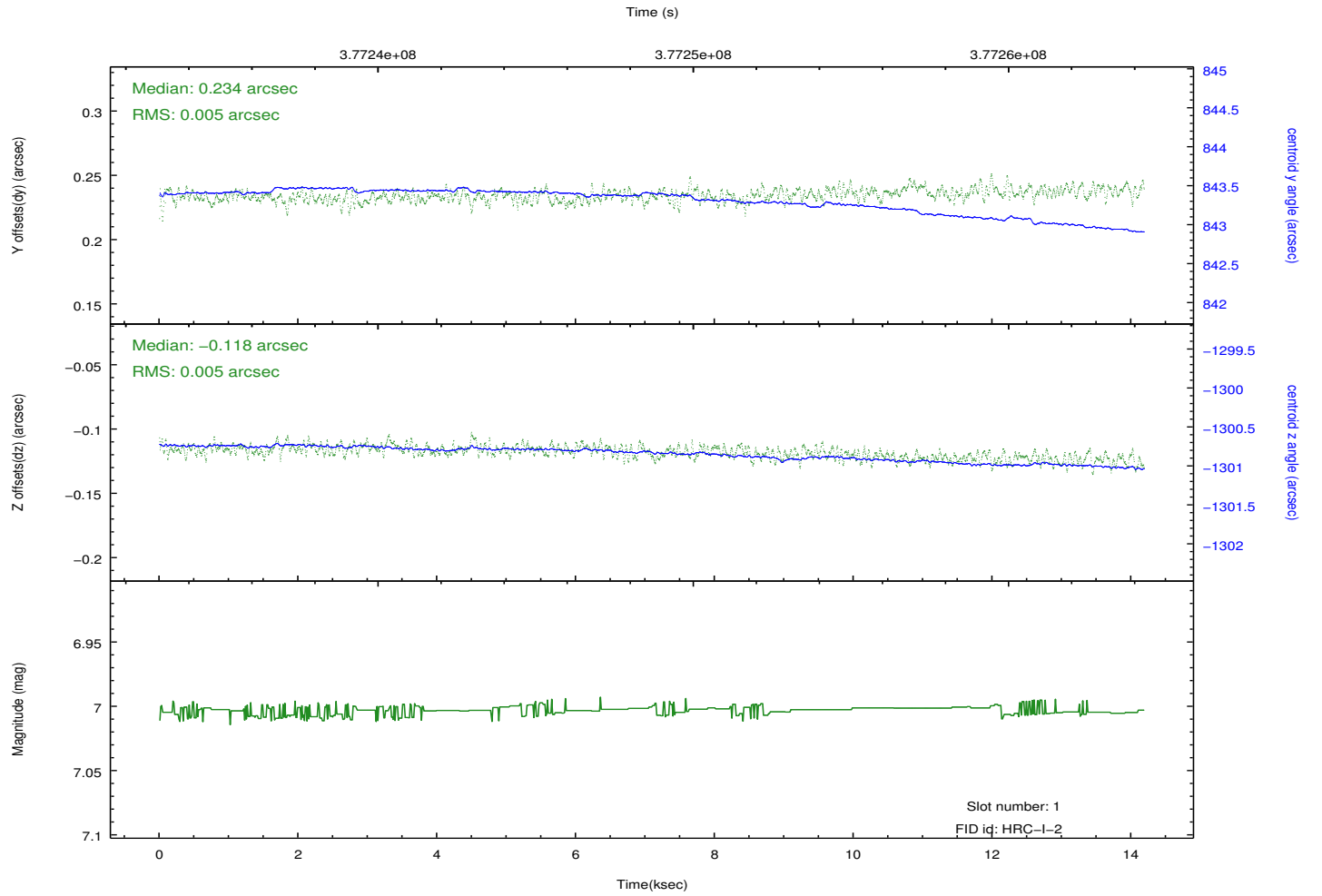
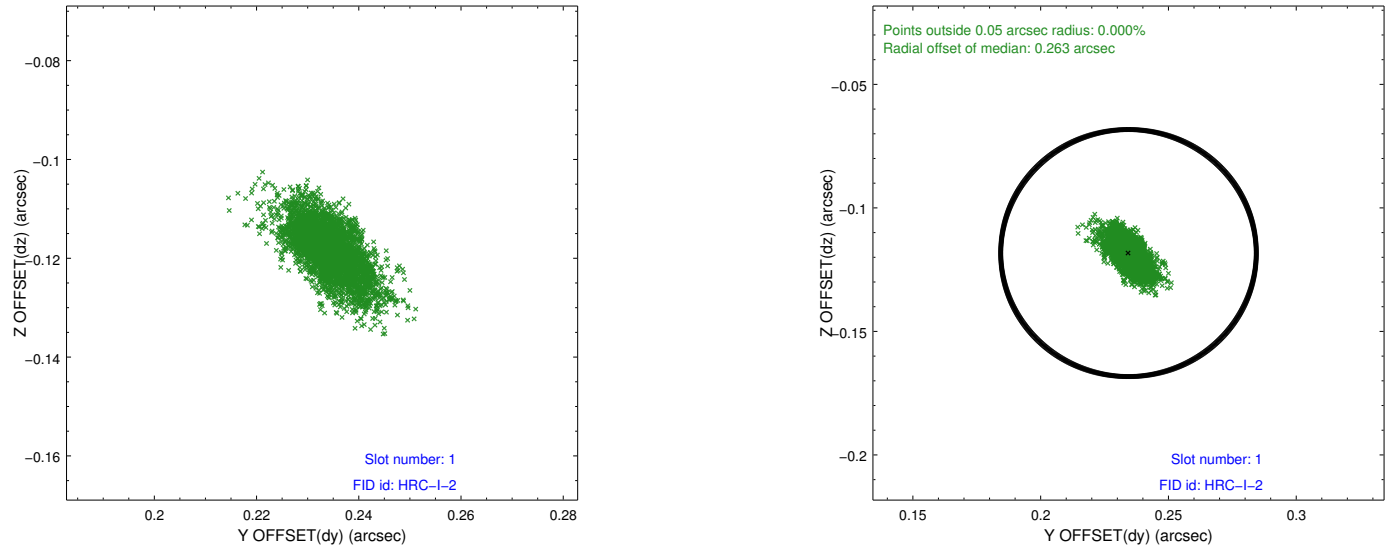


2.5 FID Slots

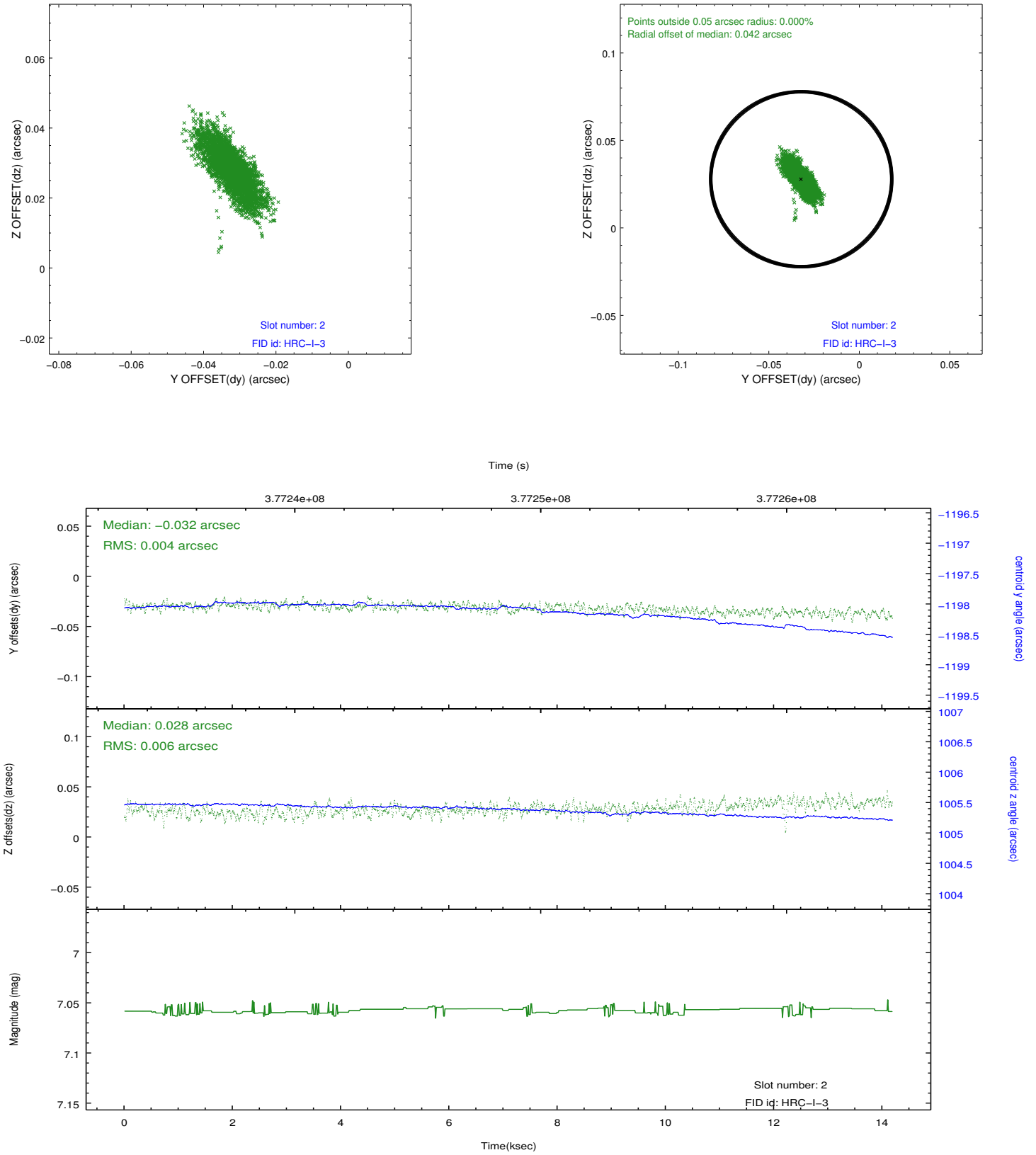
2.5.1 Slot 0



2.5.2 Slot 1



2.5.3 Slot 2



A Summary

A.1 Status

V&V Scientist	Jen Lauer
V&V Date (YYYY-MM-DD)	2012.08.22
V&V Edition	1
V&V Disposition and Status	OK
V&V Charge Time	14.186000715375

A.2 Comments

Roll constraint met.