

V&V Reference Report

L2 ASCDS Version : 8.4.5

Observation 12020 - L2 Version 2
Chandra X-Ray Center

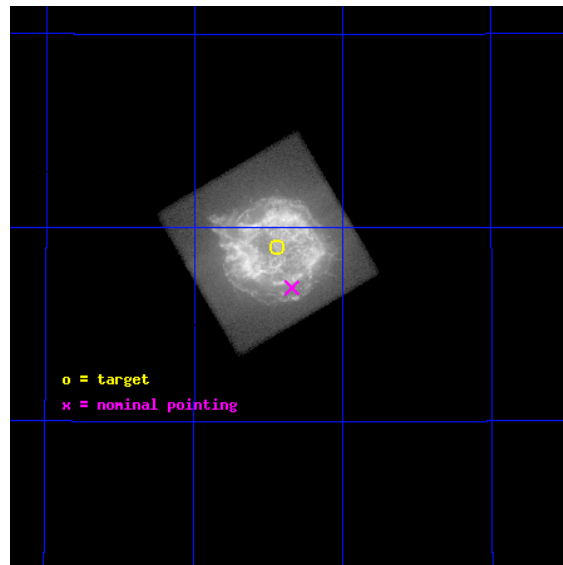
L2 Processing Date : Jun 16 2012

Contents

1	Front	2
2	OBI	3
2.1	OBI	3
2.1.1	Images	3
2.1.2	Parameters	4
2.1.3	Events	4
2.2	Compared Parameters	5
2.3	Aspect	6
2.4	Star Slots	9
2.4.1	Slot 3	9
2.4.2	Slot 4	10
2.4.3	Slot 5	11
2.4.4	Slot 6	12
2.4.5	Slot 7	13
2.5	FID Slots	14
2.5.1	Slot 0	14
2.5.2	Slot 1	15
2.5.3	Slot 2	16
A	Summary	17
A.1	Status	17
A.2	Comments	17

1 Front

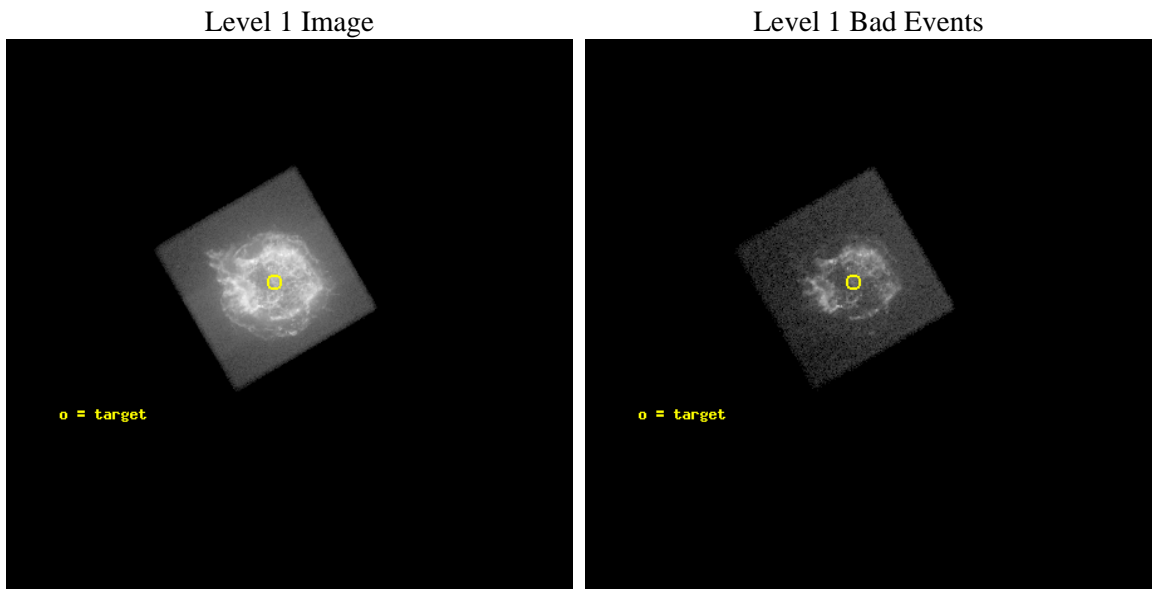
seq_num	501175	Sequence number
obs_id	12020	Observation id
title	Testing Shock Physics Through Flux Variability in Cas A	Proposal t
observer	Daniel Patnaude	Principal investigator
object	Cassiopeia A	Source name
dtcycle	0	
cycle	P	events from which exps? Prim/Second/Both
ra_targ	350.86125	Observer's specified target RA [deg]
dec_targ	58.8175	Observer's specified target Dec [deg]
ra_nom	350.83578651067	Nominal RA [deg]
dec_nom	58.781832118554	Nominal Dec [deg]
roll_nom	239.6784149421	Nominal Roll [deg]
revision	2	Processing version of data
ontime	22683.0	Sum of GTIs [s]
livetime	22376.884223818	Livetime [s]
ontime7	22683.0	Sum of GTIs [s]
l2events	6363740	Number of level 2 events



2 OBI

2.1 OBI

2.1.1 Images



2.1.2 Parameters

obi_num	0	Obi number	sched_exp_time	22500.000000	[s] Scheduled observation exposure time
ascdsver	8.4.5	Processing system revision	ontime	22683.0	Sum of GTIs [s]
caldsver	4.4.10	 	ontime7	22683.0	Sum of GTIs [s]
date	2012-06-16T04:45:47	Date and time of file creation	l1events	6903659	Number of level 1 events
revision	2	Processing version of data			

2.1.3 Events

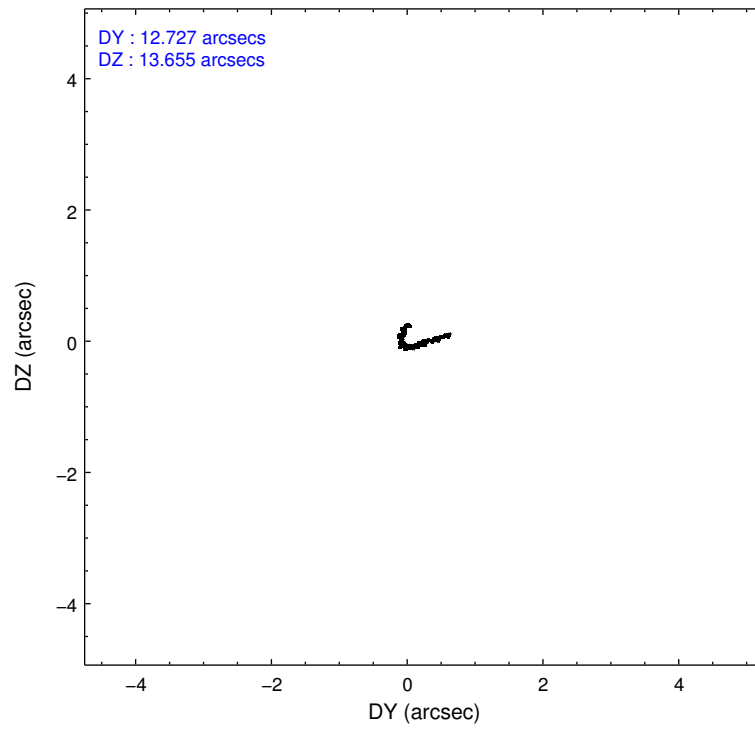
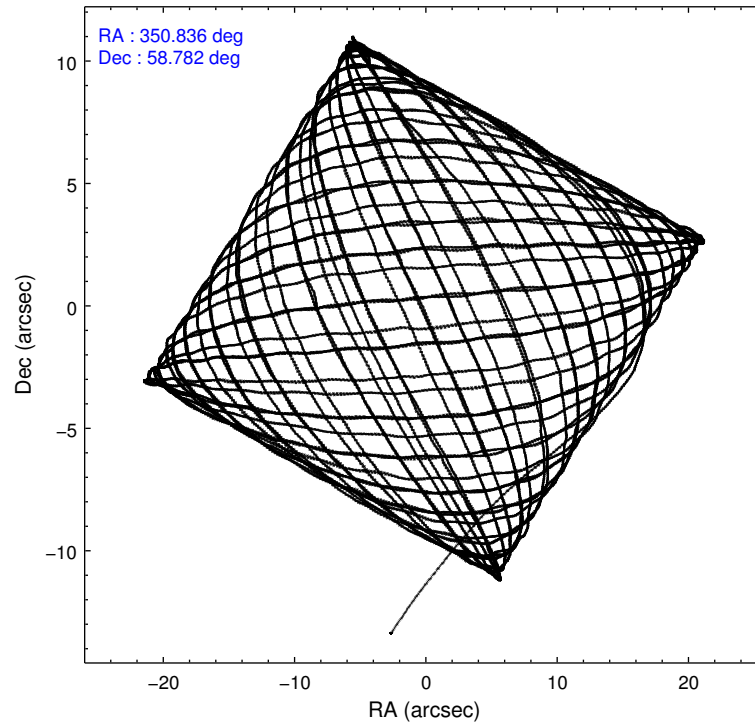
	ccd 7
level 1 events	6903659
rejected events	470665
rejected %	6%

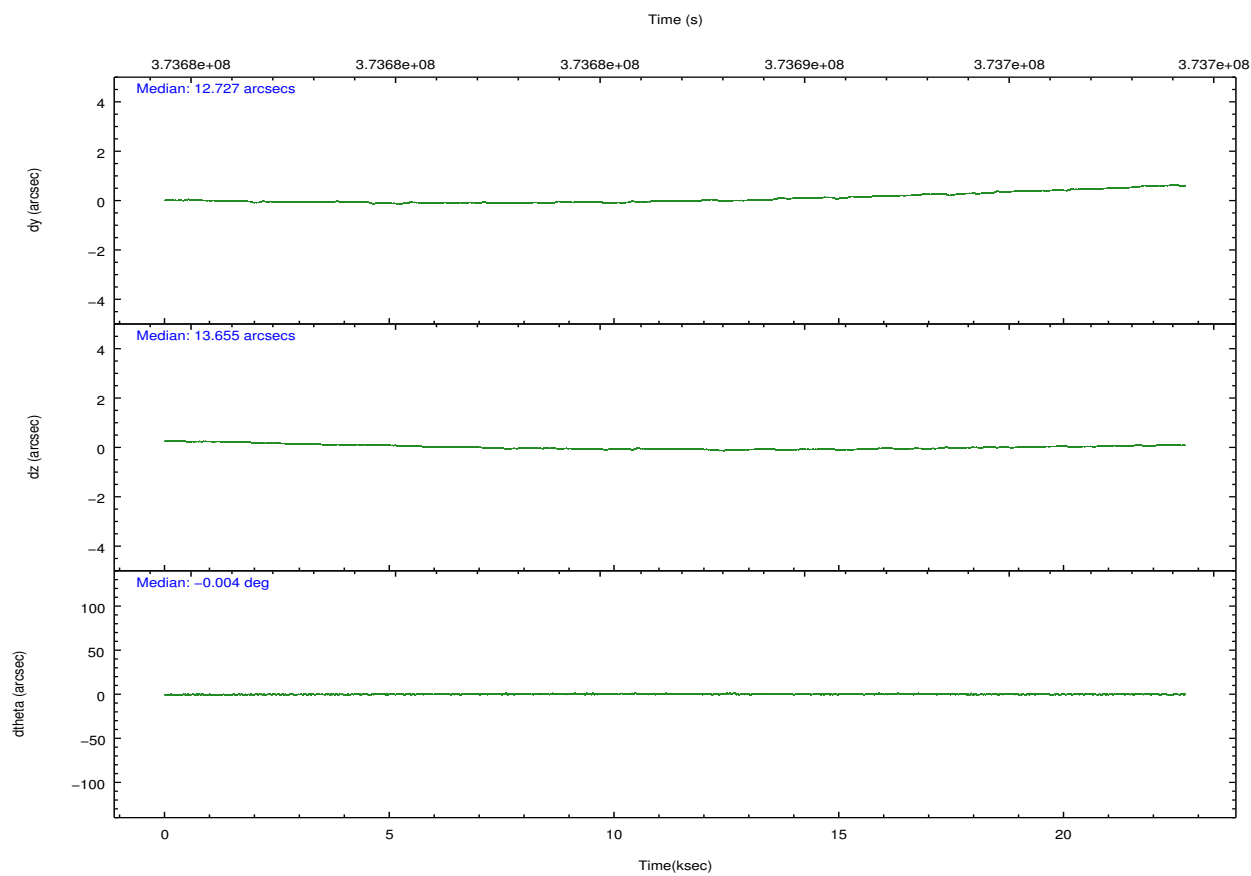
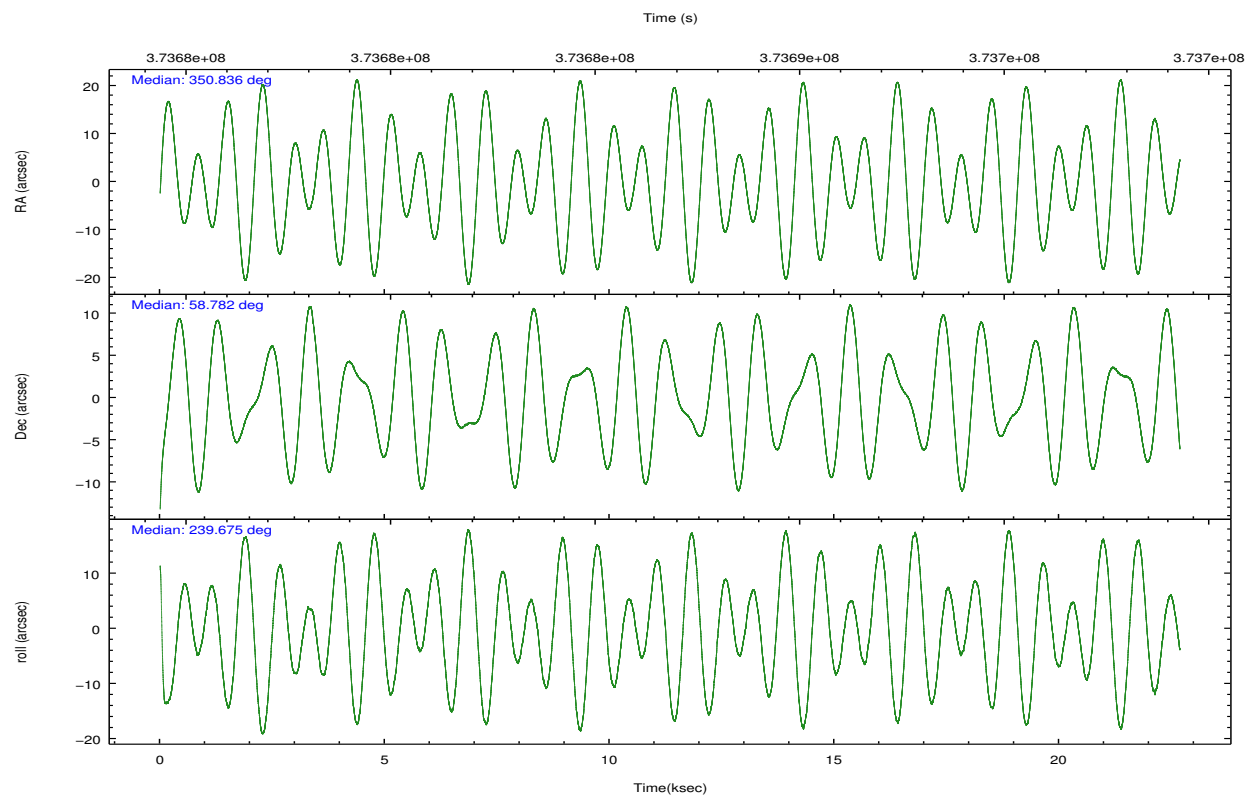
	ccd 7
grade 0 events	1346269
	19%
grade 1 events	22725
	0%
grade 2 events	2000185
	28%
grade 3 events	645339
	9%
grade 4 events	639968
	9%
grade 5 events	126753
	1%
grade 6 events	1841212
	26%
grade 7 events	281208
	4%

2.2 Compared Parameters

Parameter	Planned	Actual	Parameter	Planned	Actual
Instrument	ACIS	ACIS	Obspar format version number	7	7
Detector	ACIS-7	ACIS-7	Obspar file type	PREDICTED	ACTUAL
Grating	NONE	NONE	Obspar update status	NONE	UPDATED
Data mode	GRADED	GRADED	Number of optional ACIS chips dropped	0	0
Observation mode	POINTING	POINTING	On-chip summing requested	N	N
[deg] Pointing RA	350.835333	350.8357865106688	Subarray requested	NONE	NONE
[deg] Pointing Dec	58.809152	58.78183211855418	Alternating exposures requested	N	N
[deg] Pointing Roll	239.522165	239.6784149420969	[s] Primary exposure time	0.000000	3
[mm] SIM focus pos	-0.684267	-0.6828225247311905			
[mm] SIM defocus	0	0.001444936568705701			
[mm] SIM translation stage pos	-190.132523	-190.145094680475			
[mm] SIM translation stage offset	0	0.01257209746719923			
[s] Observation start time (MET)	373675690.184000	373674799.74605			
Observation start date	2009-11-03T22:47:04	2009-11-03T22:33:19			
[s] Observation end time (MET)	373698190.184000	373699147.59728			
Observation end date	2009-11-04T05:02:04	2009-11-04T05:19:07			
Read mode	TIMED	TIMED			

2.3 Aspect



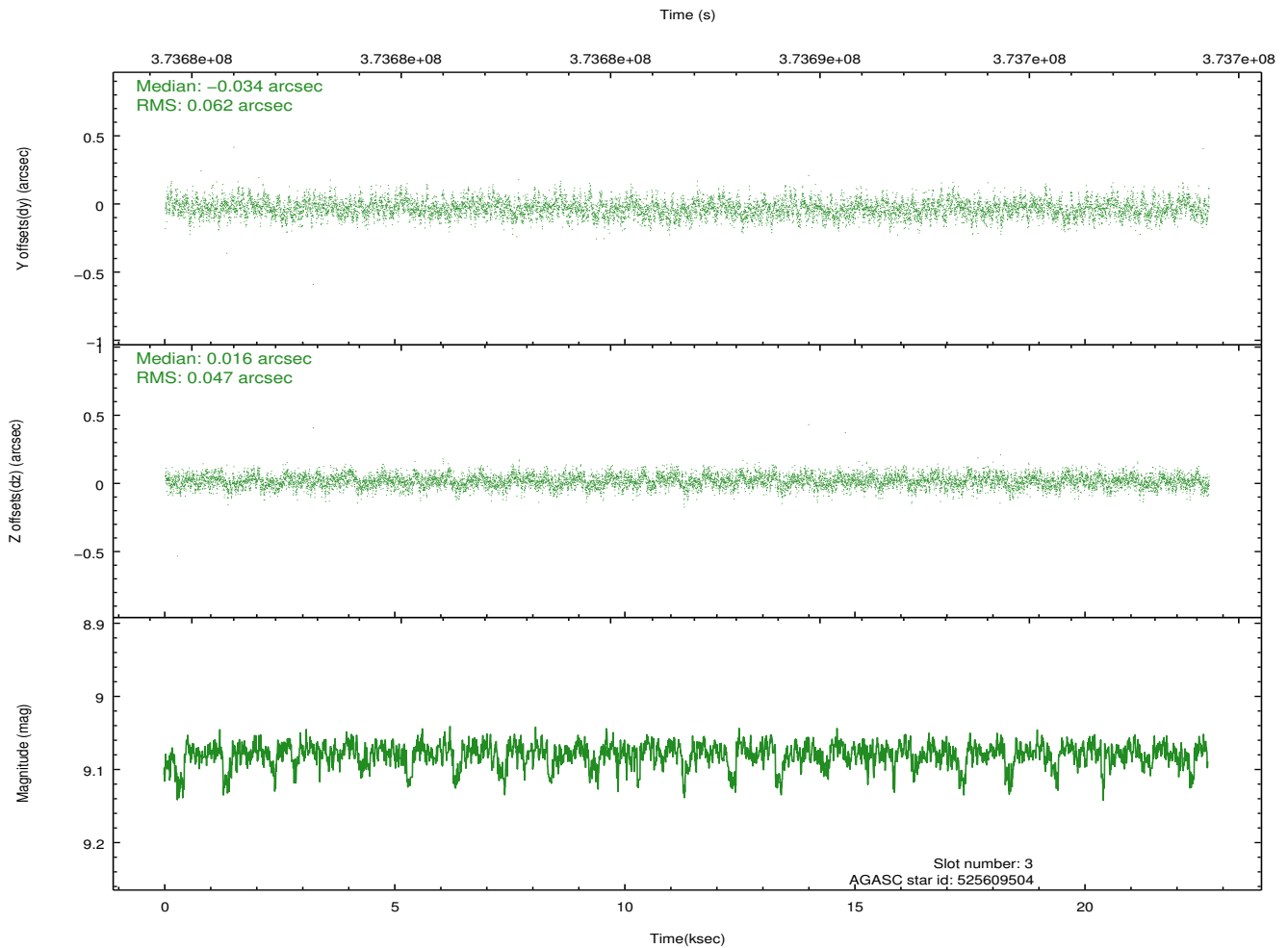
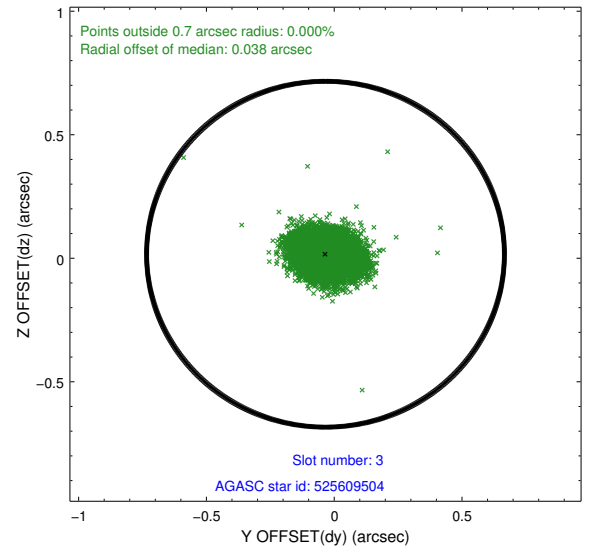
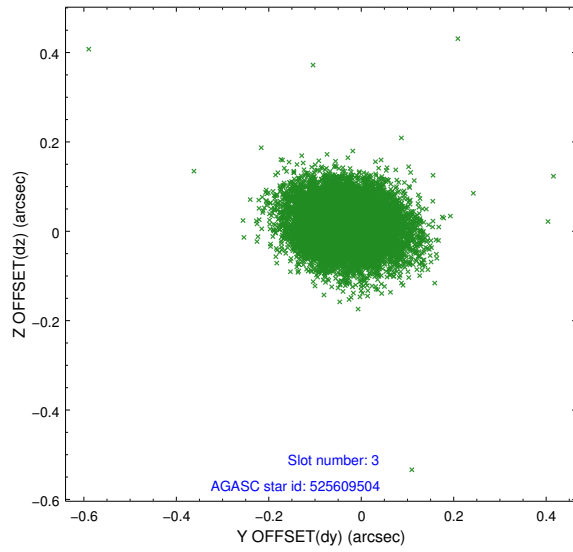


Slot Statistics

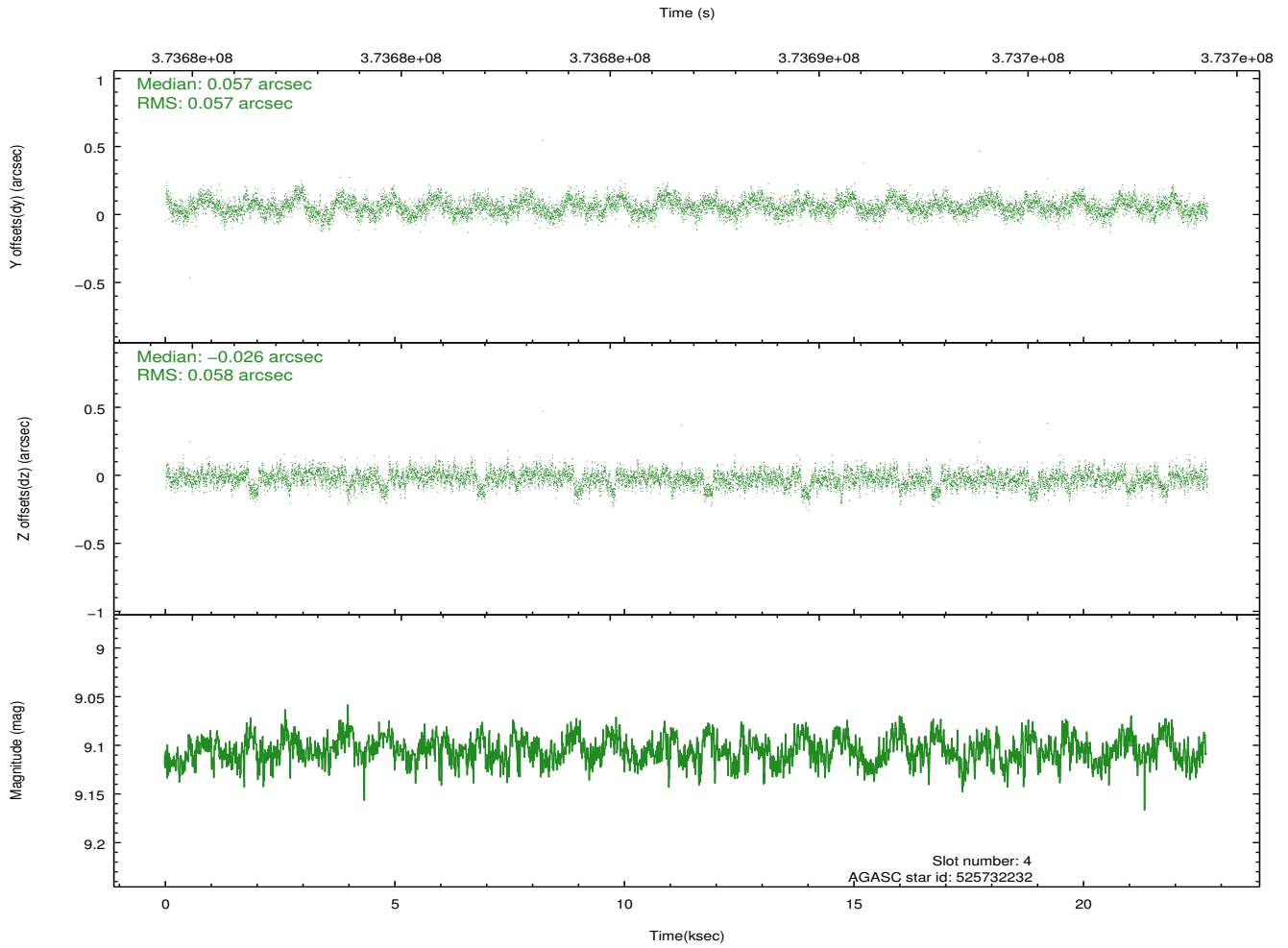
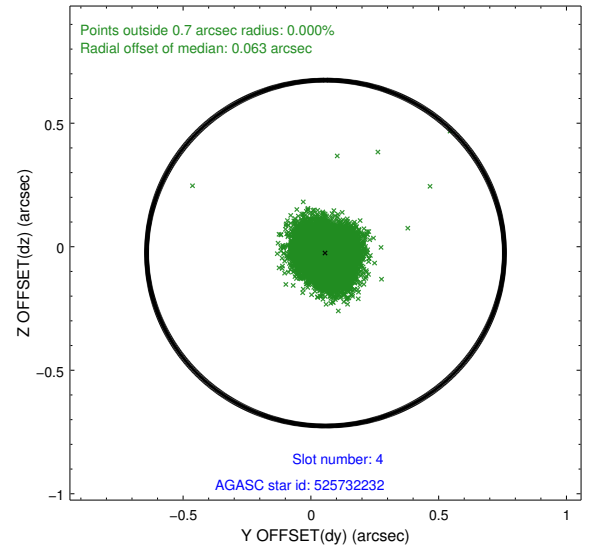
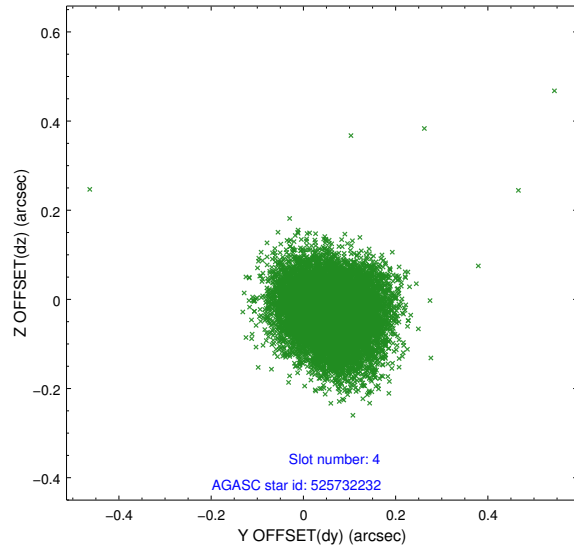
slot	status	id	mag	n_pts	med_dy	med_dz	dr1	dr2	ra	dec	mean_y	mean_z
0	FID	ACIS-S-2	6.91	5534	-0.028	-0.045	0.010	0.015	0.000000	0.000000	-765.76	-1734.96
1	FID	ACIS-S-4	6.99	5533	0.154	0.026	0.012	0.022	0.000000	0.000000	2147.63	173.44
2	FID	ACIS-S-5	7.02	5534	-0.156	0.028	0.009	0.016	0.000000	0.000000	-1818.54	167.28
3	GUIDE	525609504	9.08	11057	-0.034	0.016	0.082	0.135	349.896632	58.356658	2293.04	-708.04
4	GUIDE	525732232	9.11	11053	0.057	-0.026	0.086	0.139	351.669550	58.757012	-635.64	1434.26
5	GUIDE	525732488	8.42	11059	0.029	-0.016	0.071	0.112	350.087090	58.516915	1613.81	-682.36
6	GUIDE	525735456	7.08	11067	-0.078	-0.021	0.062	0.097	350.628183	59.307249	-1352.13	-1238.01
7	GUIDE	525735976	8.87	11053	0.021	0.051	0.081	0.133	350.142956	58.277622	2308.50	-162.29

2.4 Star Slots

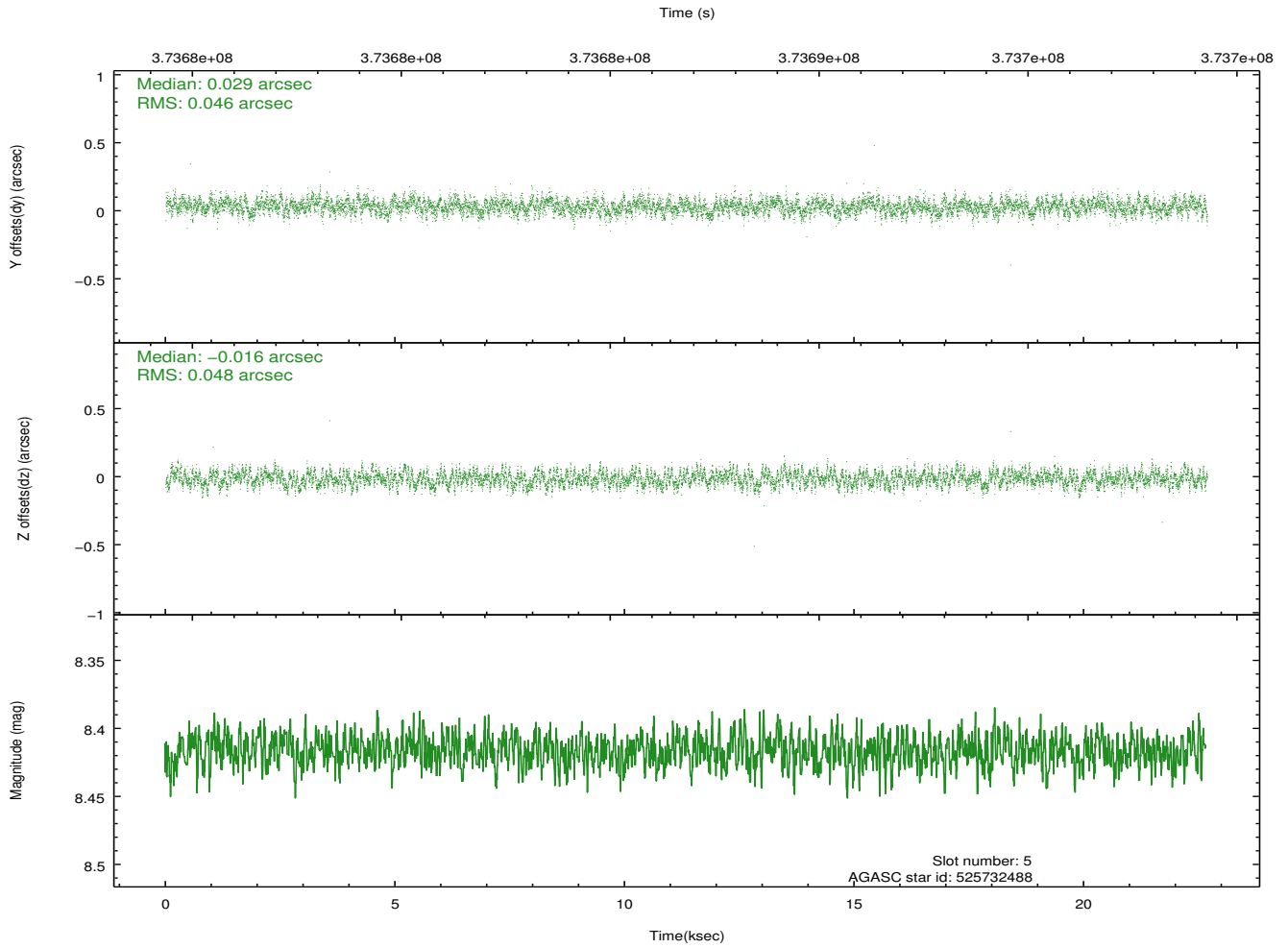
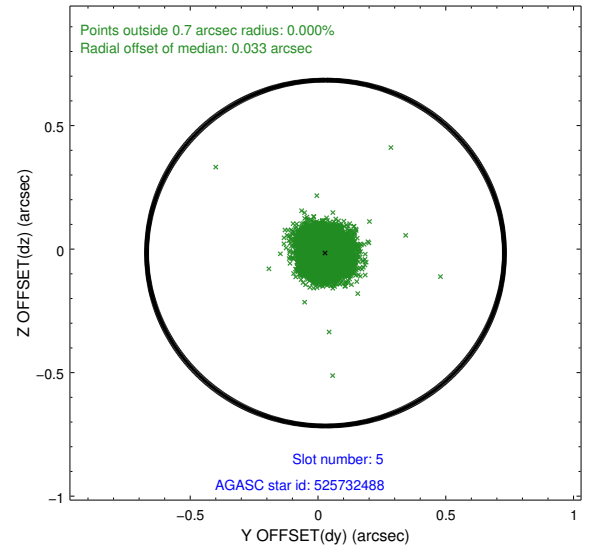
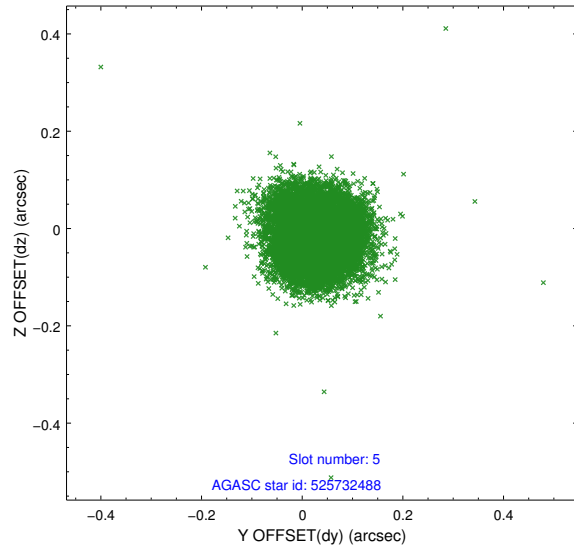
2.4.1 Slot 3



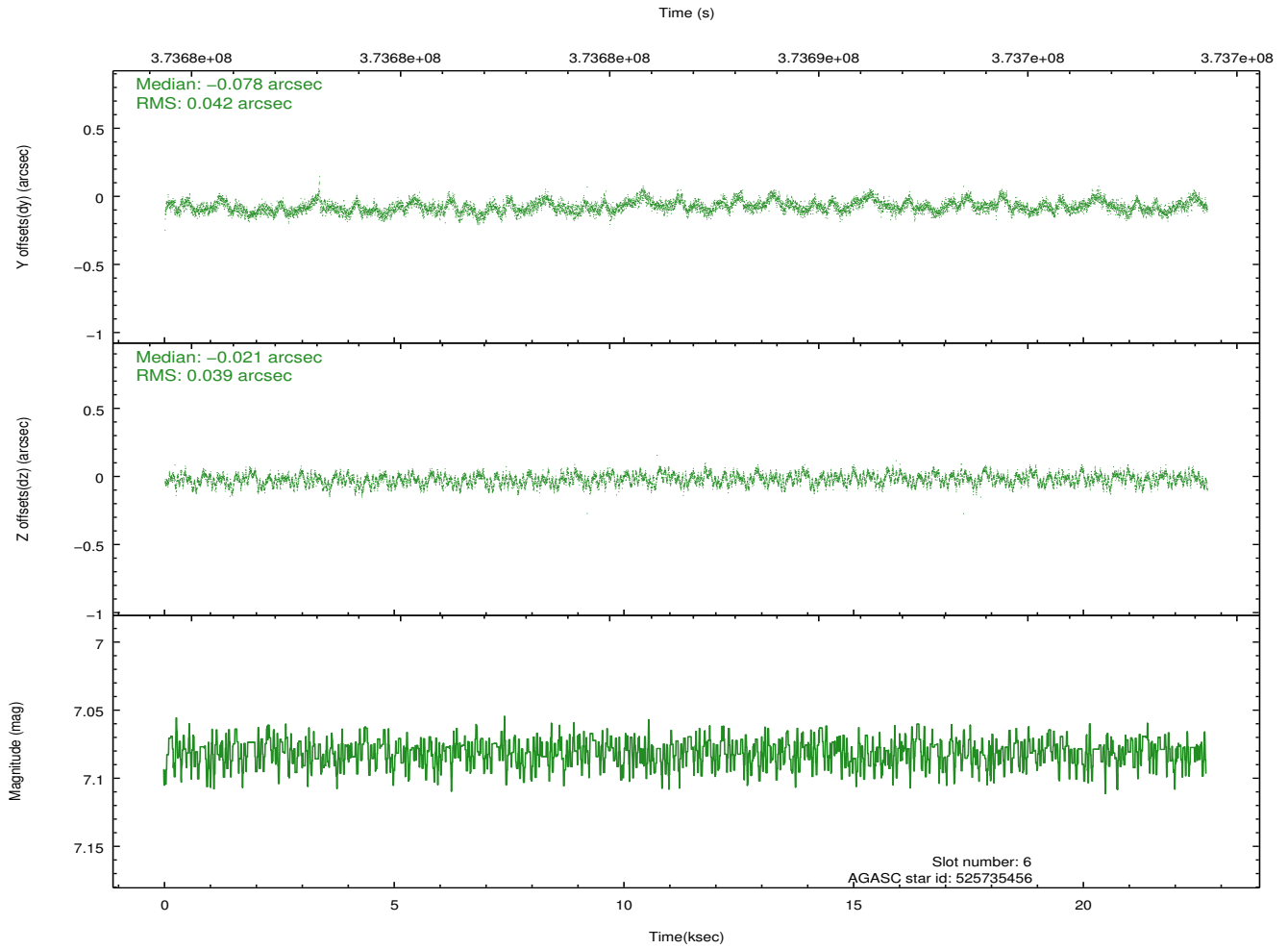
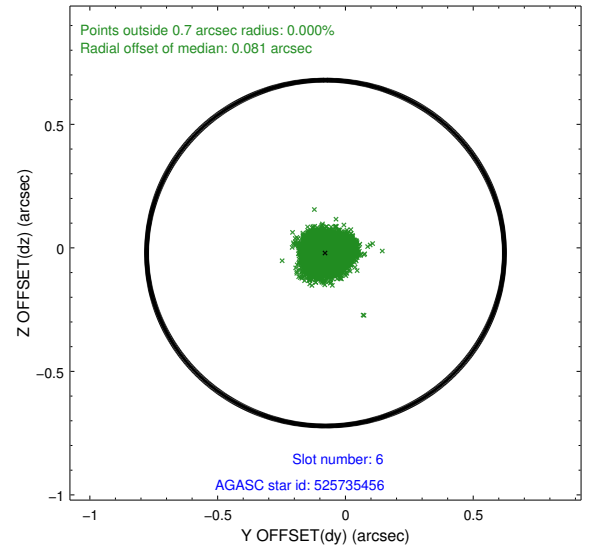
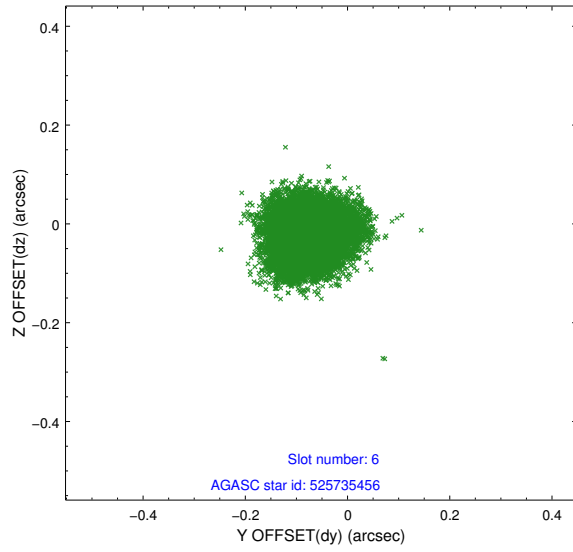
2.4.2 Slot 4



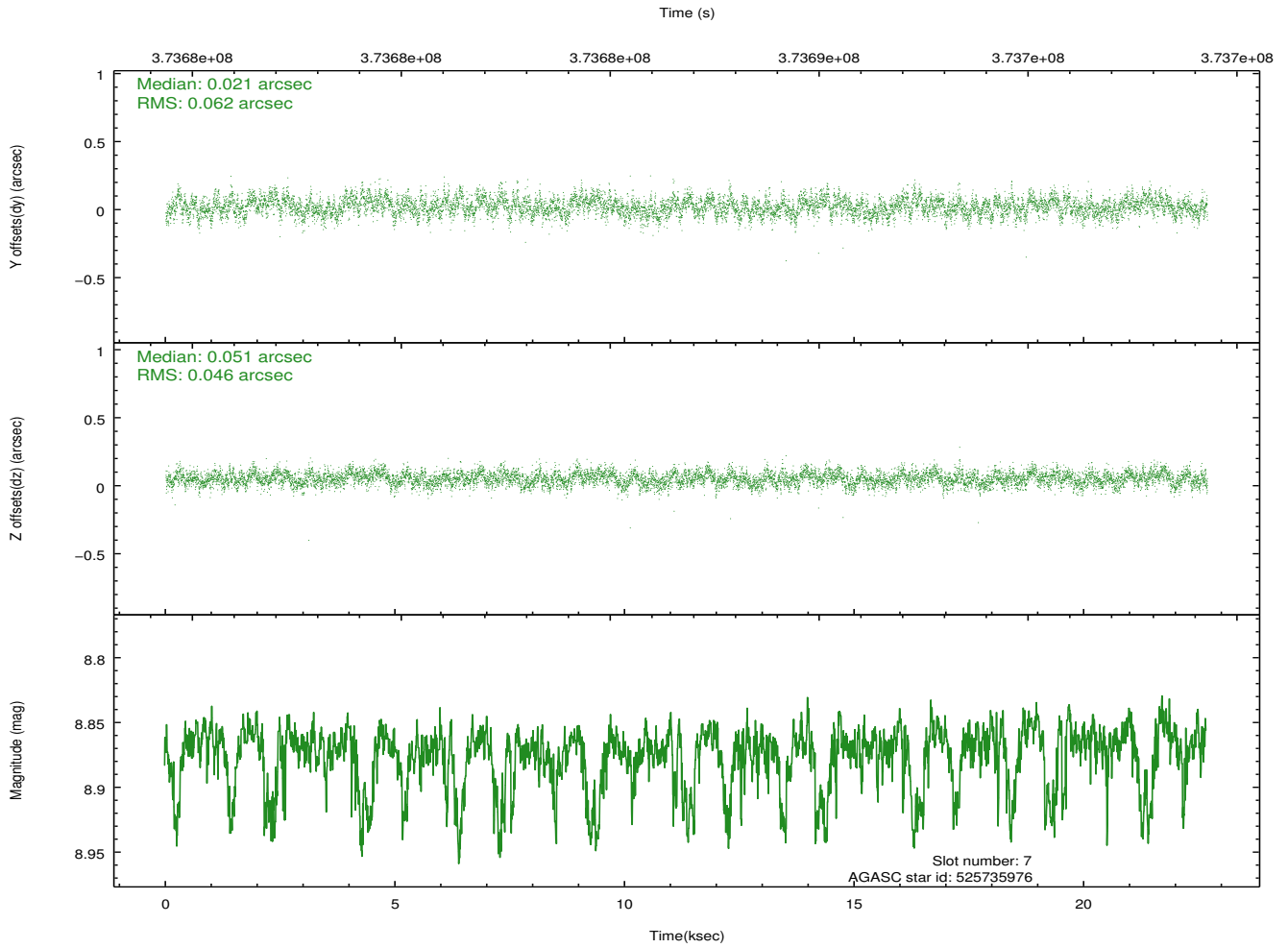
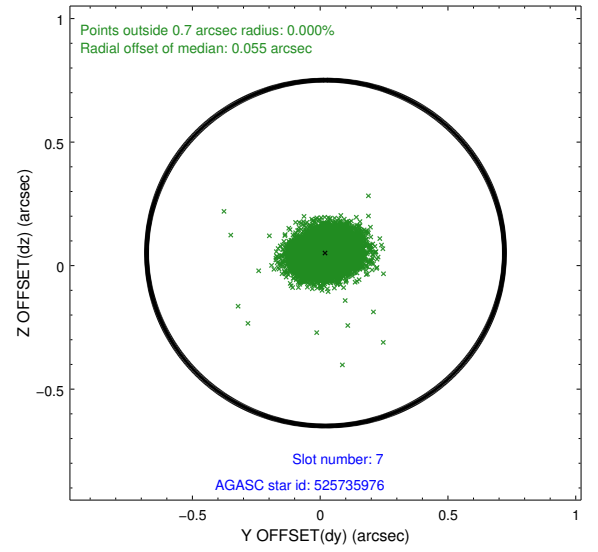
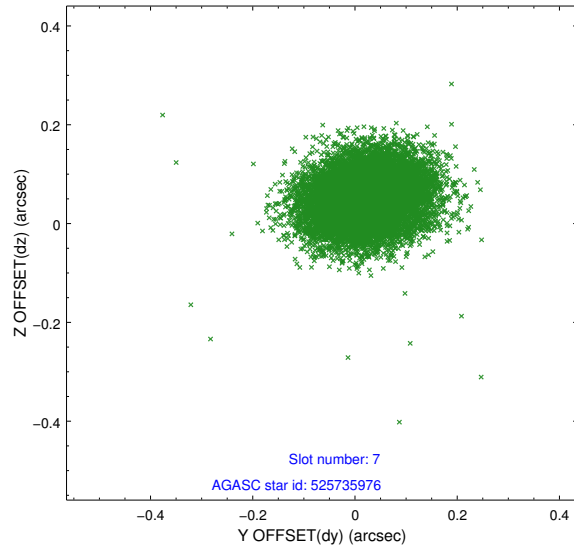
2.4.3 Slot 5



2.4.4 Slot 6

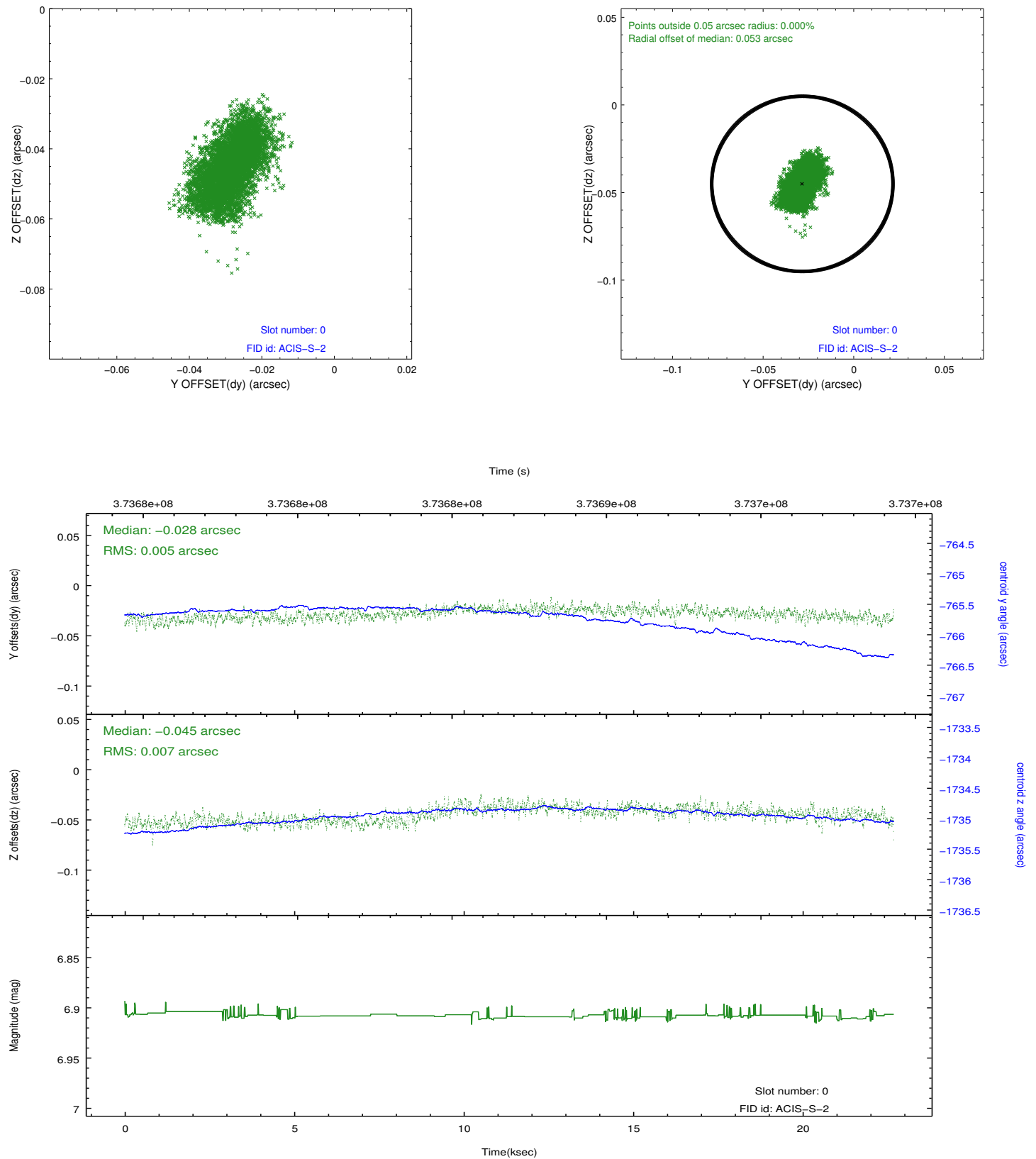


2.4.5 Slot 7

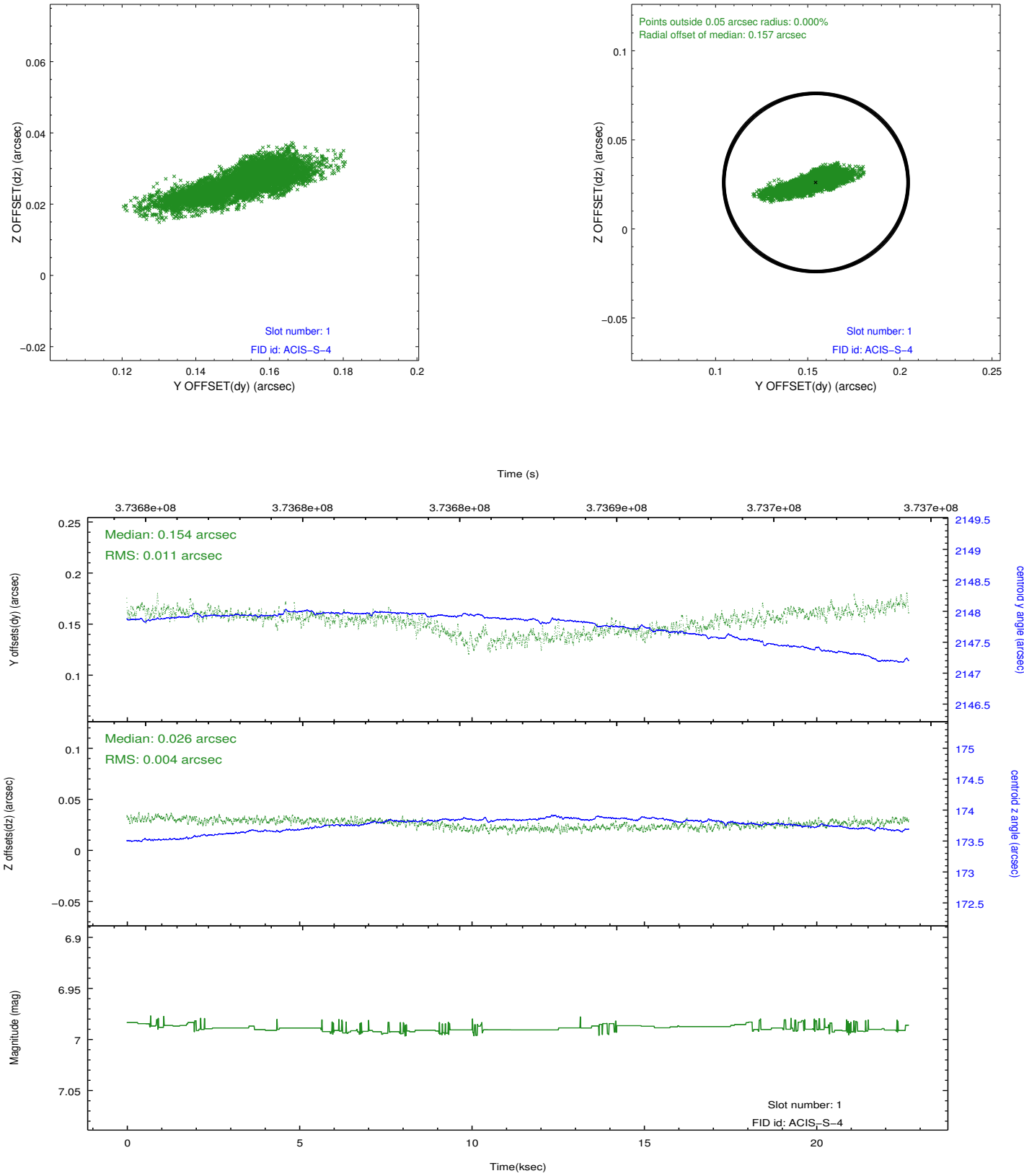


2.5 FID Slots

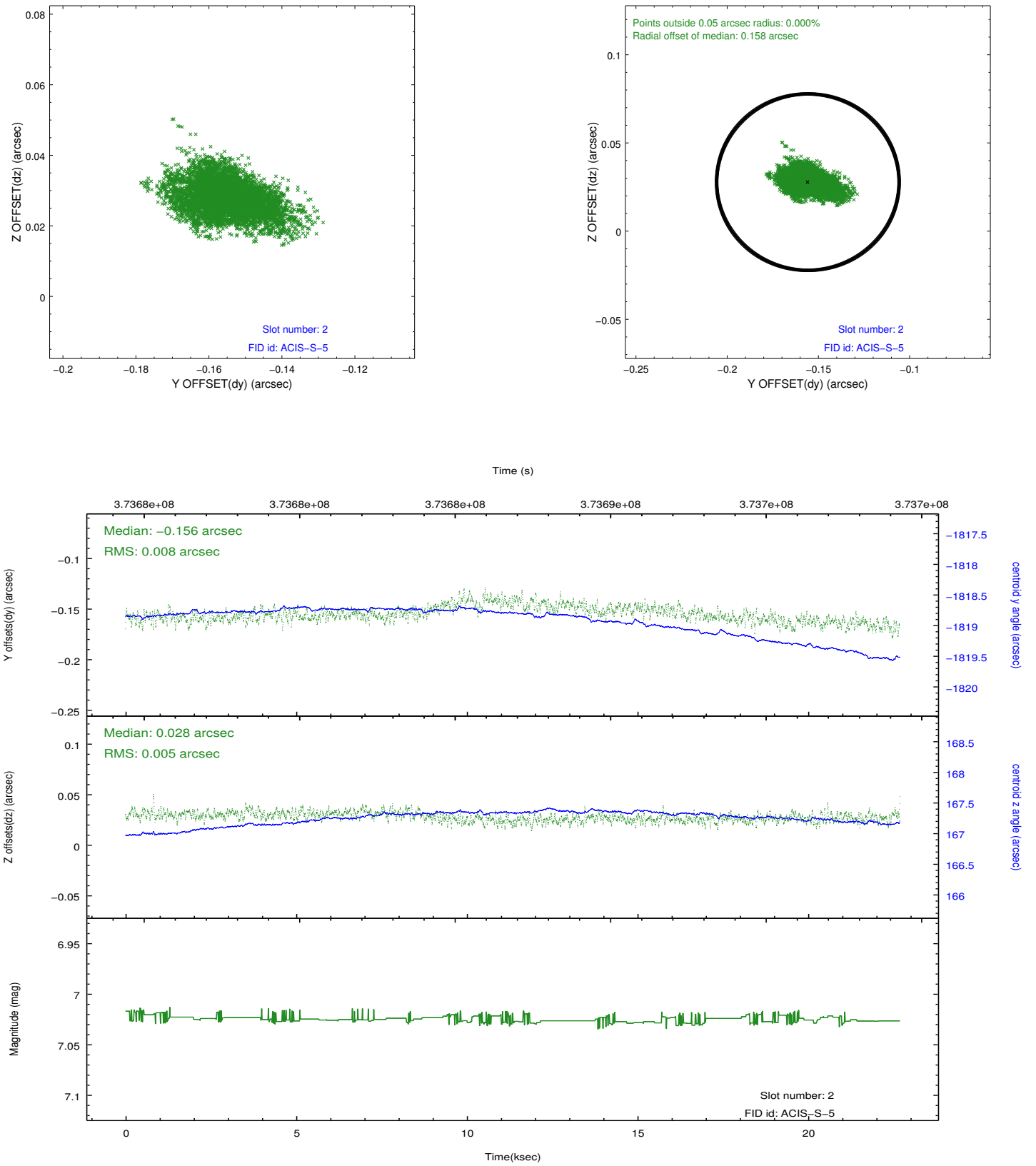
2.5.1 Slot 0



2.5.2 Slot 1



2.5.3 Slot 2



A Summary

A.1 Status

V&V Scientist	Jen Lauer
V&V Date (YYYY-MM-DD)	2012.06.20
V&V Edition	1
V&V Disposition and Status	OK
V&V Charge Time	22.683

A.2 Comments