

V&V Reference Report

L2 ASCDS Version : 8.4.5

Observation 11006 - L2 Version 2
Chandra X-Ray Center

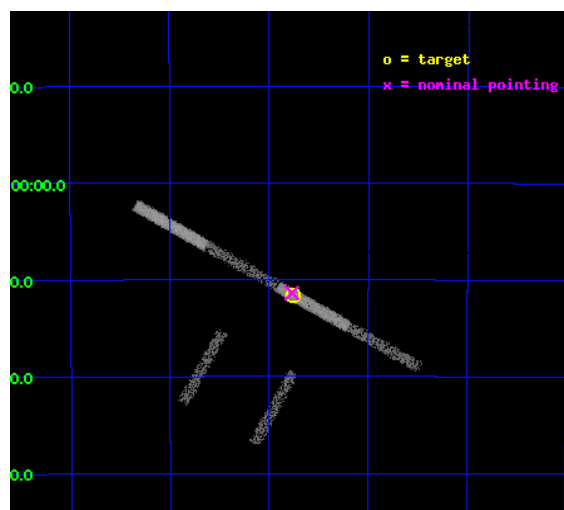
L2 Processing Date : Jun 22 2012

Contents

1	Front	2
2	OBI	3
2.1	OBI	3
2.1.1	Images	3
2.1.2	Bias	3
2.1.3	Parameters	4
2.1.4	Events	4
2.2	Compared Parameters	5
2.3	Aspect	6
2.4	Star Slots	9
2.4.1	Slot 3	9
2.4.2	Slot 4	10
2.4.3	Slot 5	11
2.4.4	Slot 6	12
2.4.5	Slot 7	13
2.5	FID Slots	14
2.5.1	Slot 0	14
2.5.2	Slot 1	15
2.5.3	Slot 2	16
A	Summary	17
A.1	Status	17
A.2	Comments	17

1 Front

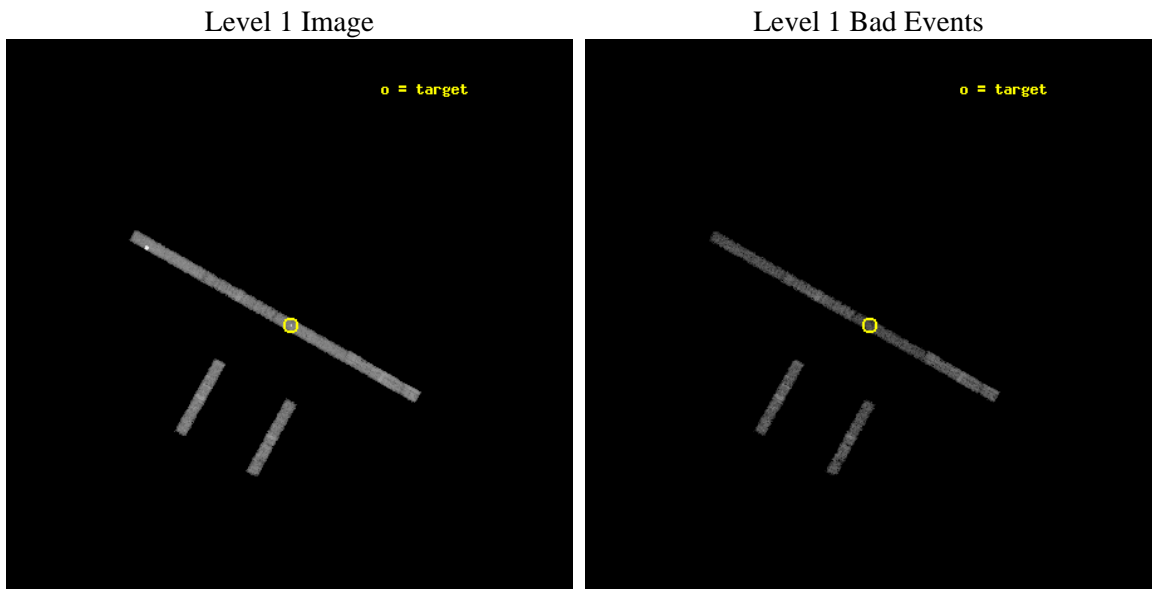
seq_num	200637	Sequence number
obs_id	11006	Observation id
title	NeII as a Tracer for X-Rays in Disks Around T Tauri Stars	Proposal
observer	Prof. Manuel Guedel	Principal investigator
object	TWA 17	Source name
dtcycle	0	
cycle	P	events from which exps? Prim/Second/Both
ra_targ	200.189167	Observer's specified target RA [deg]
dec_targ	-46.193806	Observer's specified target Dec [deg]
ra_nom	200.19261403901	Nominal RA [deg]
dec_nom	-46.189490700551	Nominal Dec [deg]
roll_nom	29.359089347397	Nominal Roll [deg]
revision	2	Processing version of data
ontime	6442.7998902202	Sum of GTIs [s]
livetime	6085.9871574464	Livetime [s]
ontime2	6442.7998902202	Sum of GTIs [s]
ontime3	6442.7998902202	Sum of GTIs [s]
ontime5	6442.7998902202	Sum of GTIs [s]
ontime6	6442.7998902202	Sum of GTIs [s]
ontime7	6442.7998902202	Sum of GTIs [s]
ontime8	6442.7998902202	Sum of GTIs [s]
l2events	12073	Number of level 2 events



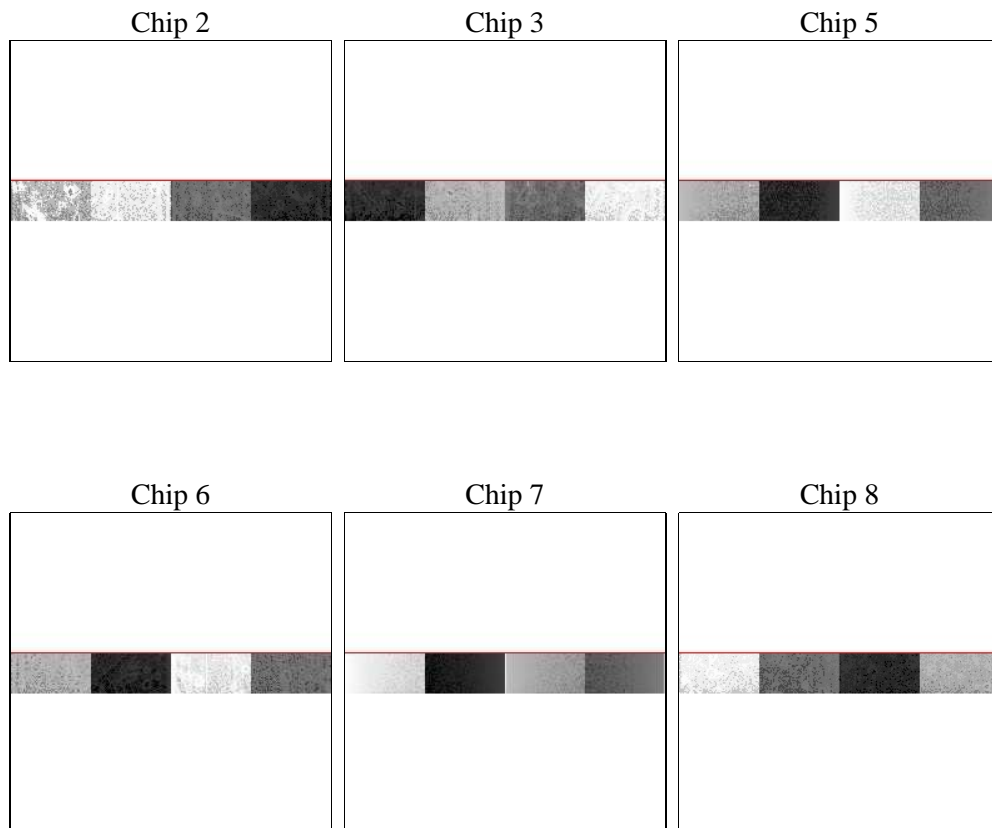
2 OBI

2.1 OBI

2.1.1 Images



2.1.2 Bias



2.1.3 Parameters

obi_num	0	Obi number	sched_exp_time	6300.000000	[s] Scheduled observation exposure time
ascdsver	8.4.5	Processing system revision	ontime	6442.7998902202	Sum of GTIs [s]
caldsver	4.4.10	 	ontime2	6442.7998902202	Sum of GTIs [s]
date	2012-06-22T16:12:18	Date and time of file creation	ontime3	6442.7998902202	Sum of GTIs [s]
revision	2	Processing version of data	ontime5	6442.7998902202	Sum of GTIs [s]
			ontime6	6442.7998902202	Sum of GTIs [s]
			ontime7	6442.7998902202	Sum of GTIs [s]
			ontime8	6442.7998902202	Sum of GTIs [s]
			l1events	69991	Number of level 1 events

2.1.4 Events

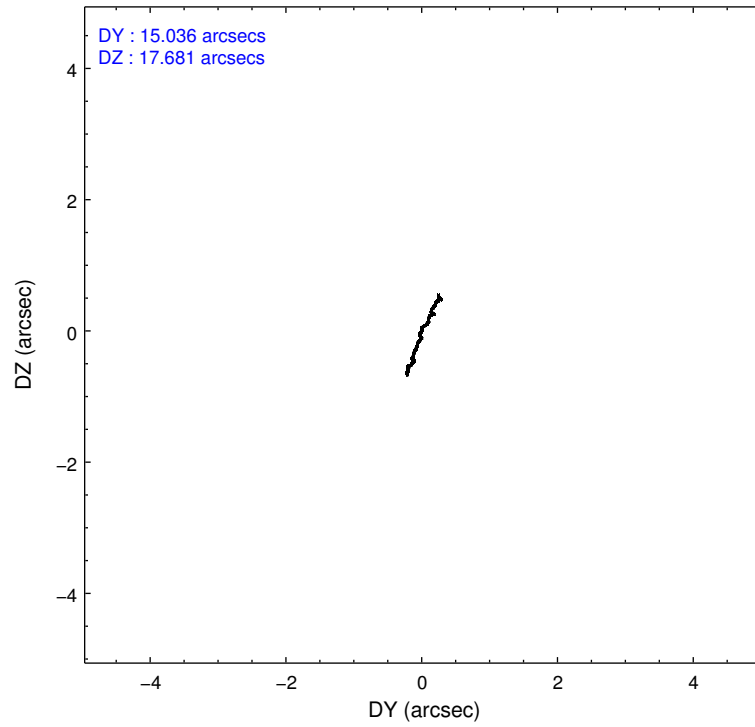
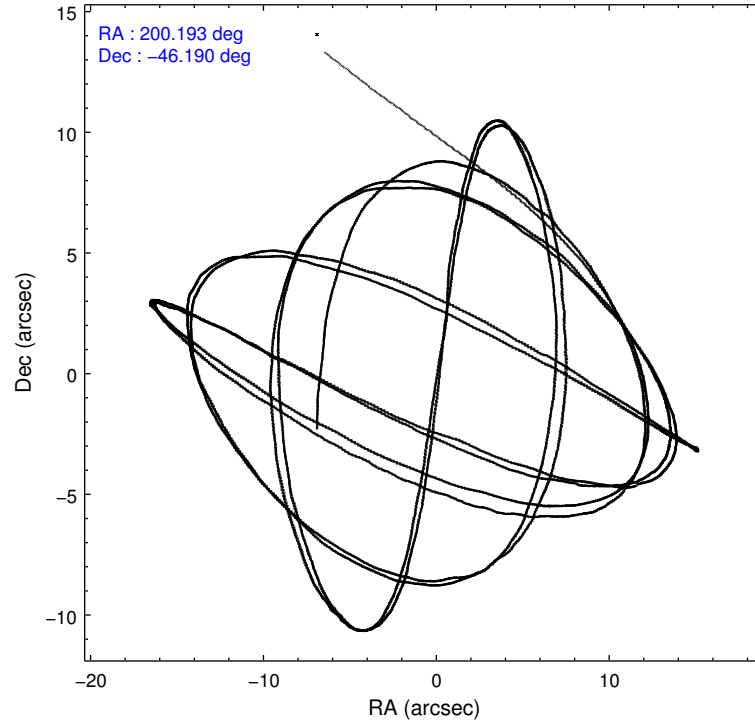
	ccd 2	ccd 3	ccd 5	ccd 6	ccd 7	ccd 8
level 1 events	9730	7983	20284	8750	10087	13157
rejected events	8844	7203	7017	7866	5404	10576
rejected %	90%	90%	34%	89%	53%	80%

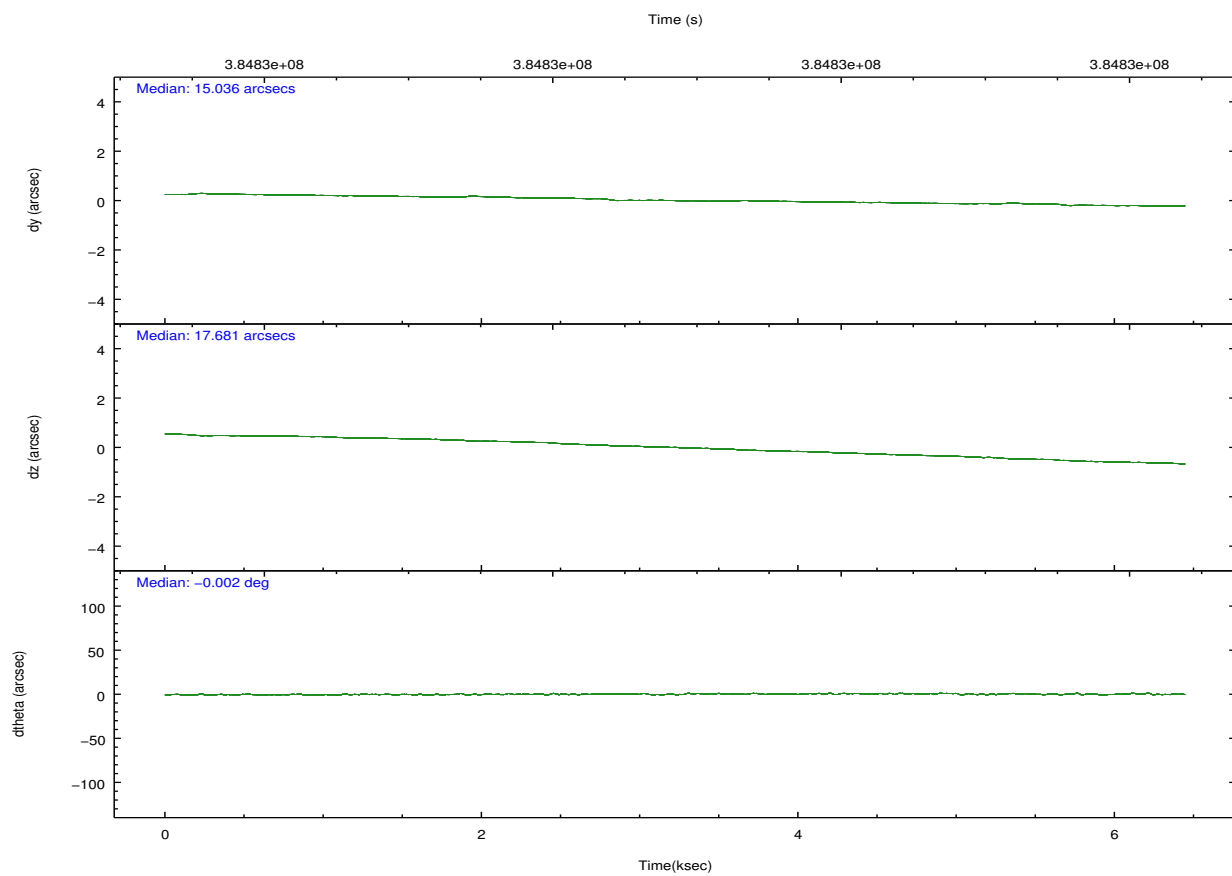
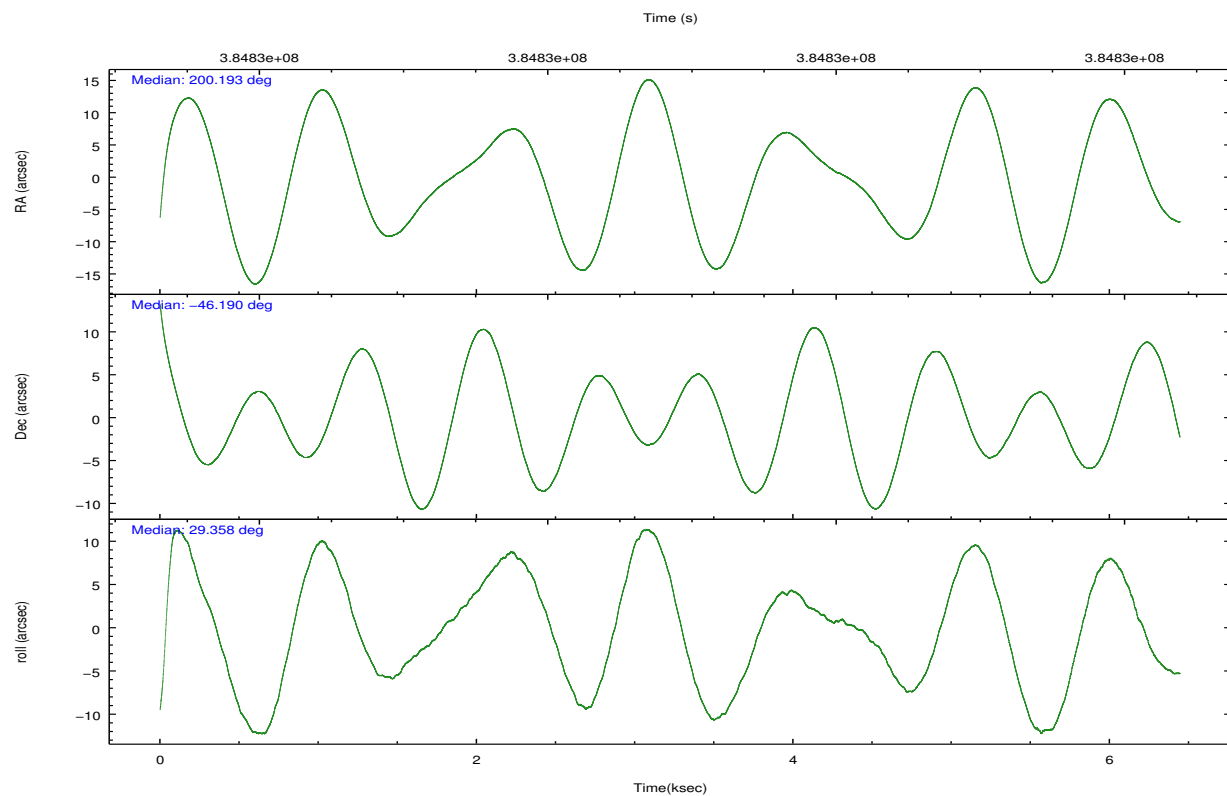
	ccd 2	ccd 3	ccd 5	ccd 6	ccd 7	ccd 8
grade 0 events	262	227	6531	280	698	718
	2%	2%	32%	3%	6%	5%
grade 1 events	1	2	47	3	26	4
	0%	0%	0%	0%	0%	0%
grade 2 events	207	166	4353	183	1154	617
	2%	2%	21%	2%	11%	4%
grade 3 events	152	144	389	162	581	339
	1%	1%	1%	1%	5%	2%
grade 4 events	178	172	627	170	565	327
	1%	2%	3%	1%	5%	2%
grade 5 events	281	279	1041	291	991	409
	2%	3%	5%	3%	9%	3%
grade 6 events	179	149	2743	195	2086	915
	1%	1%	13%	2%	20%	6%
grade 7 events	8470	6844	4553	7466	3986	9828
	87%	85%	22%	85%	39%	74%

2.2 Compared Parameters

Parameter	Planned	Actual	Parameter	Planned	Actual
Instrument	ACIS	ACIS	Obspar format version number	7	7
Detector	ACIS-235678	ACIS-235678	Obspar file type	PREDICTED	ACTUAL
Grating	NONE	NONE	Obspar update status	NONE	UPDATED
Data mode	VFAINT	VFAINT	CCD I0 on	N	N
Observation mode	POINTING	POINTING	CCD I1 on	N	N
[deg] Pointing RA	200.172884	200.1926140390065	CCD I2 on	O1	Y
[deg] Pointing Dec	-46.213268	-46.18949070055146	CCD I3 on	O2	Y
[deg] Pointing Roll	29.188242	29.35908934739653	CCD S0 on	N	N
[mm] SIM focus pos	-0.684267	-0.6828225247311905	CCD S1 on	Y	Y
[mm] SIM defocus	0	0.001444936568705701	CCD S2 on	Y	Y
[mm] SIM translation stage pos	-190.132523	-190.145094680475	CCD S3 on	Y	Y
[mm] SIM translation stage offset	0	0.01257209746719923	CCD S4 on	Y	Y
[s] Observation start time (MET)	384825778.184000	384824673.43491	CCD S5 on	N	N
Observation start date	2010-03-13T00:01:52	2010-03-12T23:44:33	Number of optional ACIS chips dropped	0	0
[s] Observation end time (MET)	384832078.184000	384833532.51036	On-chip summing requested	N	N
Observation end date	2010-03-13T01:46:52	2010-03-13T02:12:12	Subarray requested	CUSTOM	1/8
Read mode	TIMED	TIMED	Subarray start row	449	449
			Subarray row count	128	128
			Alternating exposures requested	N	N
			[s] Primary exposure time	0.000000	0.7

2.3 Aspect



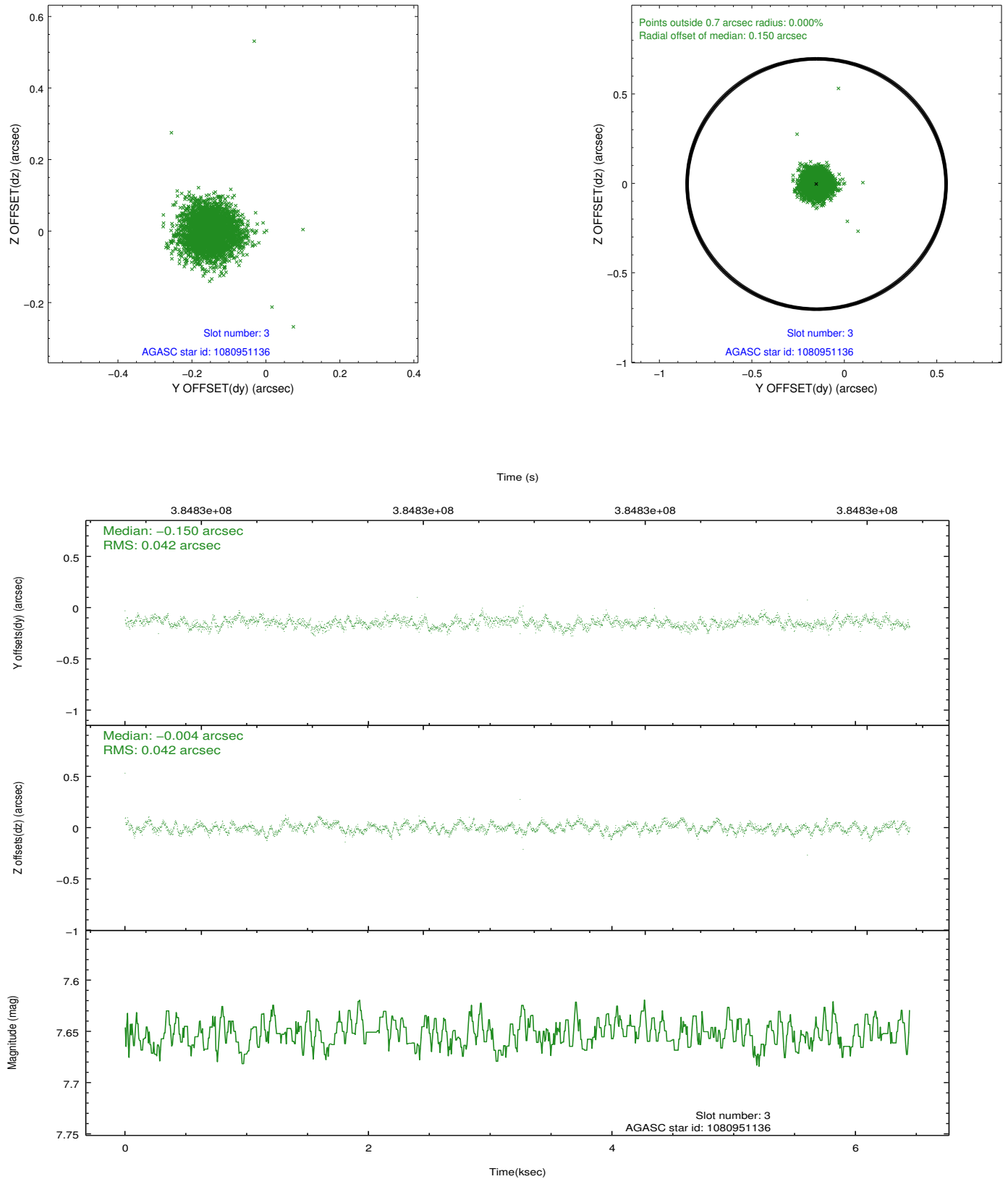


Slot Statistics

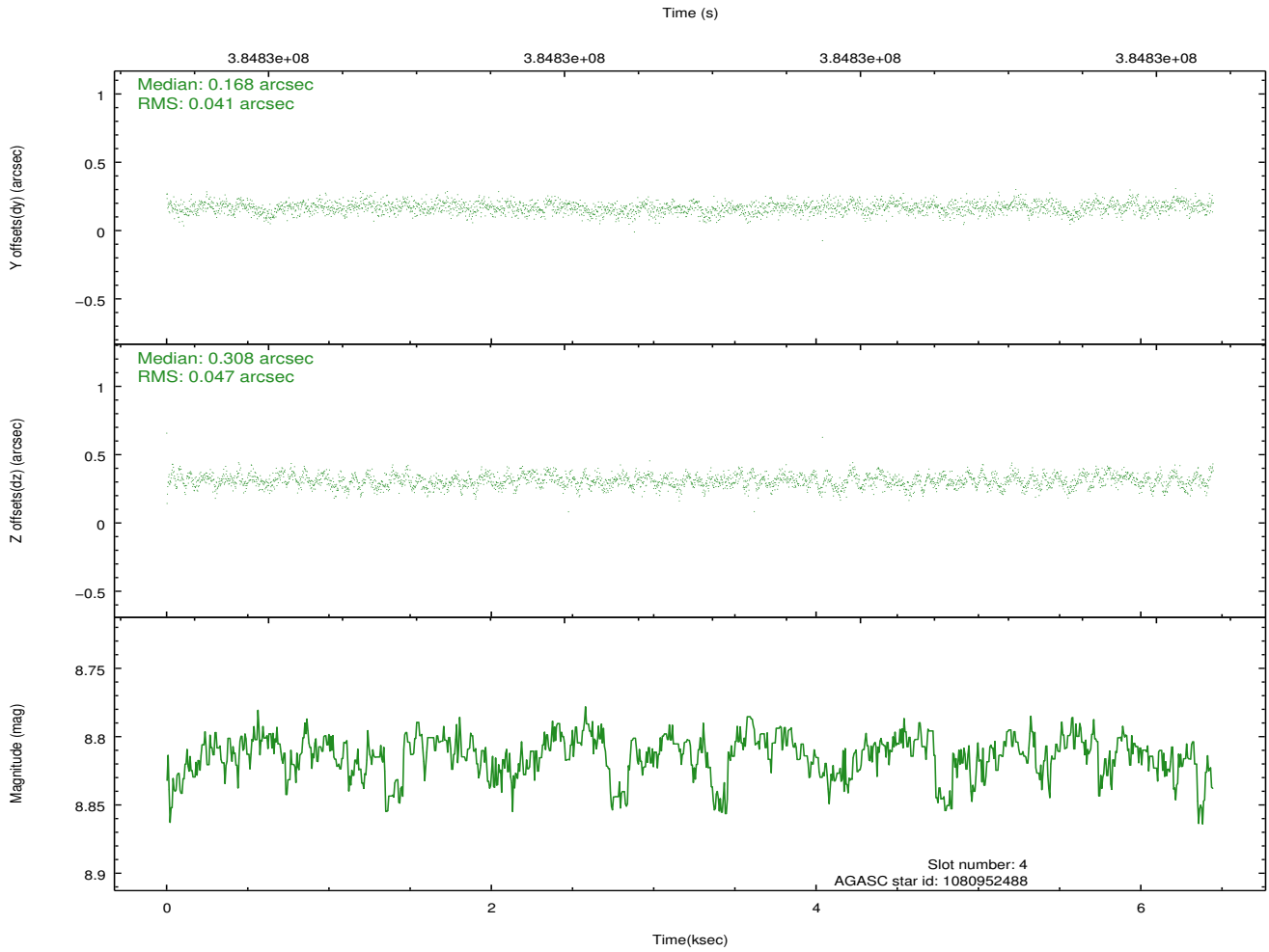
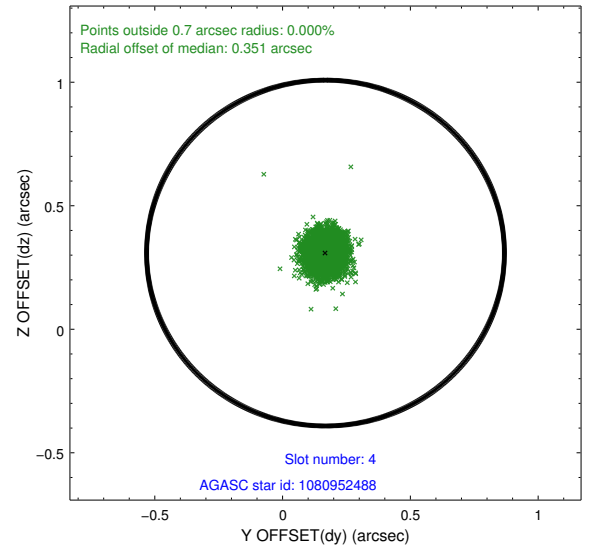
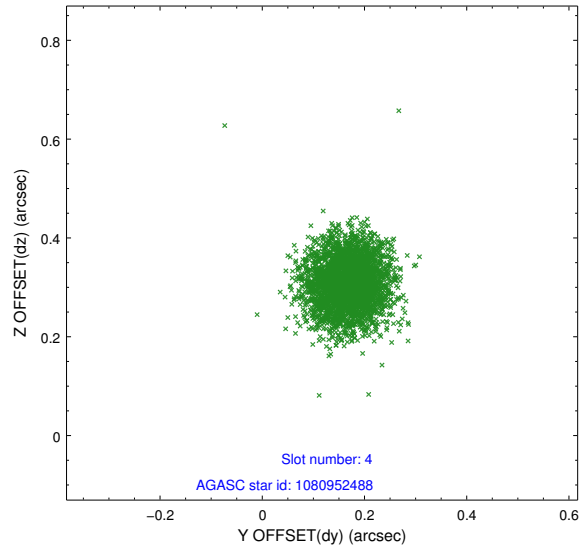
slot	status	id	mag	n_pts	med_dy	med_dz	dr1	dr2	ra	dec	mean_y	mean_z
0	FID	ACIS-S-2	6.88	1572	-0.104	-0.053	0.007	0.012	0.000000	0.000000	-768.20	-1739.03
1	FID	ACIS-S-4	6.97	1572	0.116	0.061	0.007	0.013	0.000000	0.000000	2144.95	168.51
2	FID	ACIS-S-6	7.10	1572	-0.040	-0.001	0.007	0.013	0.000000	0.000000	395.10	806.94
3	GUIDE	1080951136	7.65	3144	-0.150	-0.004	0.062	0.098	199.365561	-46.403084	-2088.41	371.89
4	GUIDE	1080952488	8.81	3145	0.168	0.308	0.067	0.106	199.623986	-46.555699	-1790.61	-417.27
5	GUIDE	1080978848	7.35	3144	0.005	-0.178	0.085	0.134	199.603751	-45.764655	-464.05	2102.22
6	GUIDE	1080951904	7.23	3145	0.112	-0.026	0.068	0.111	199.298083	-46.476742	-2362.14	219.74
7	GUIDE	1081093912	8.92	3143	-0.136	-0.104	0.090	0.143	199.711511	-45.683211	-85.39	2228.85

2.4 Star Slots

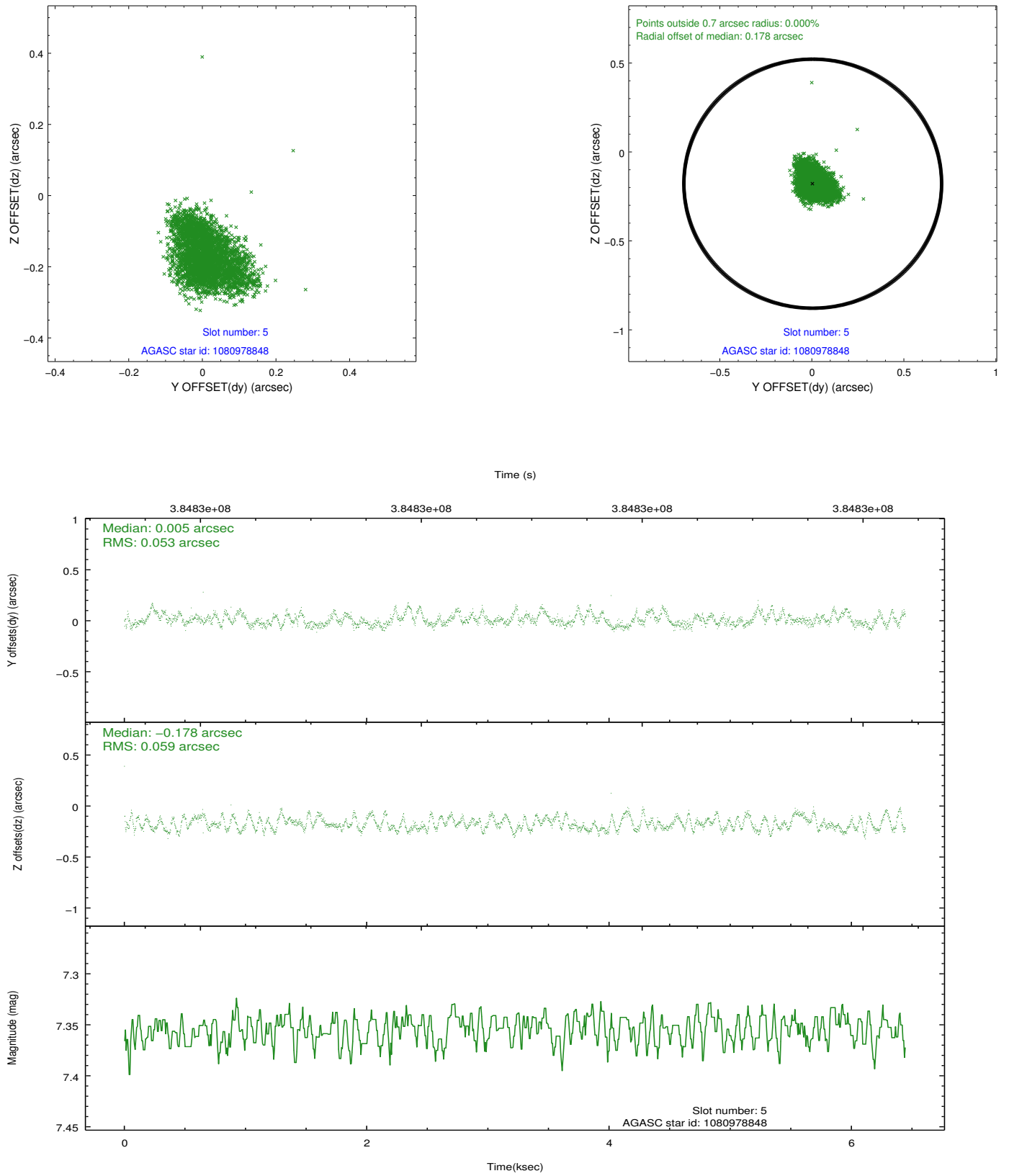
2.4.1 Slot 3



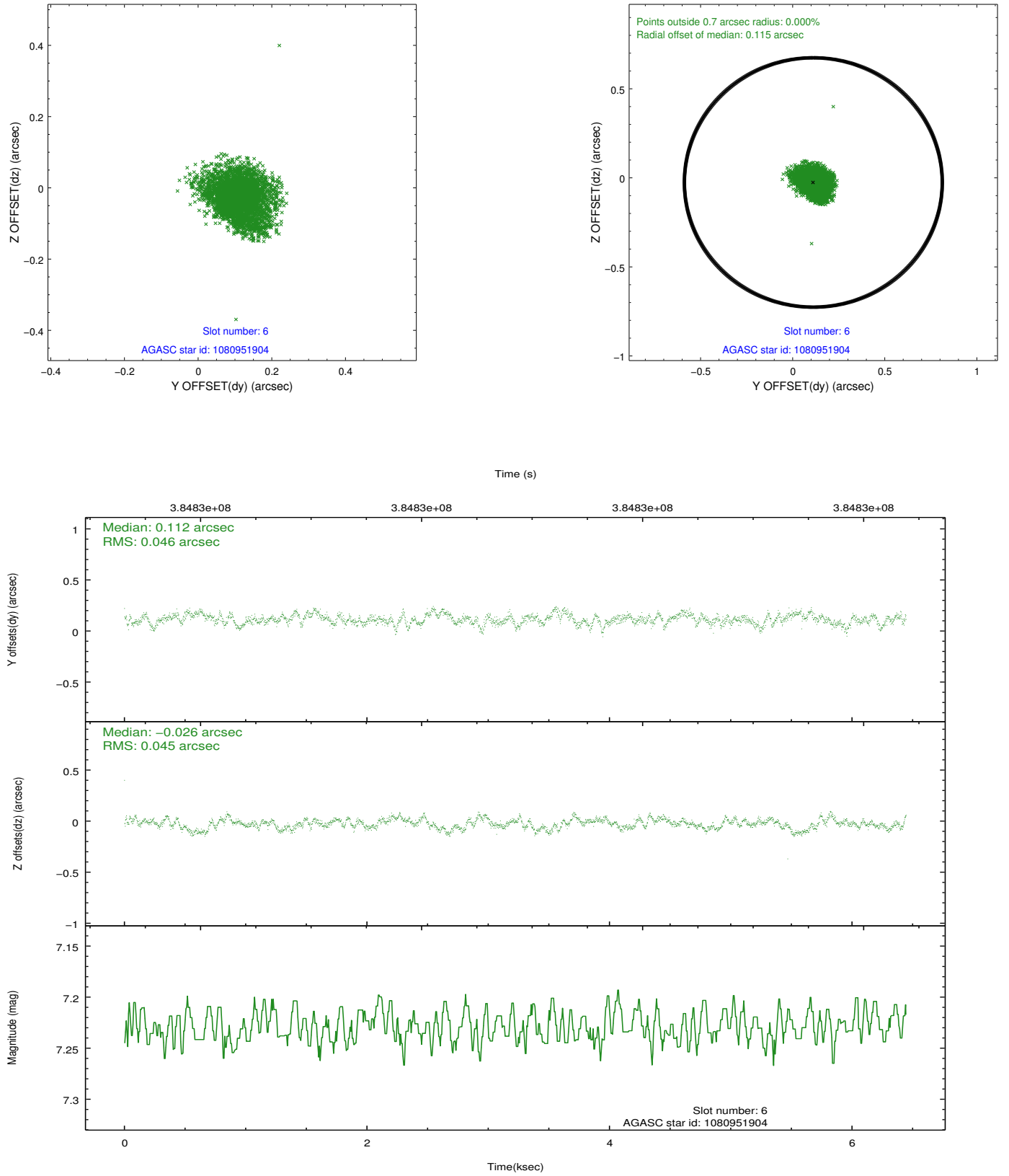
2.4.2 Slot 4



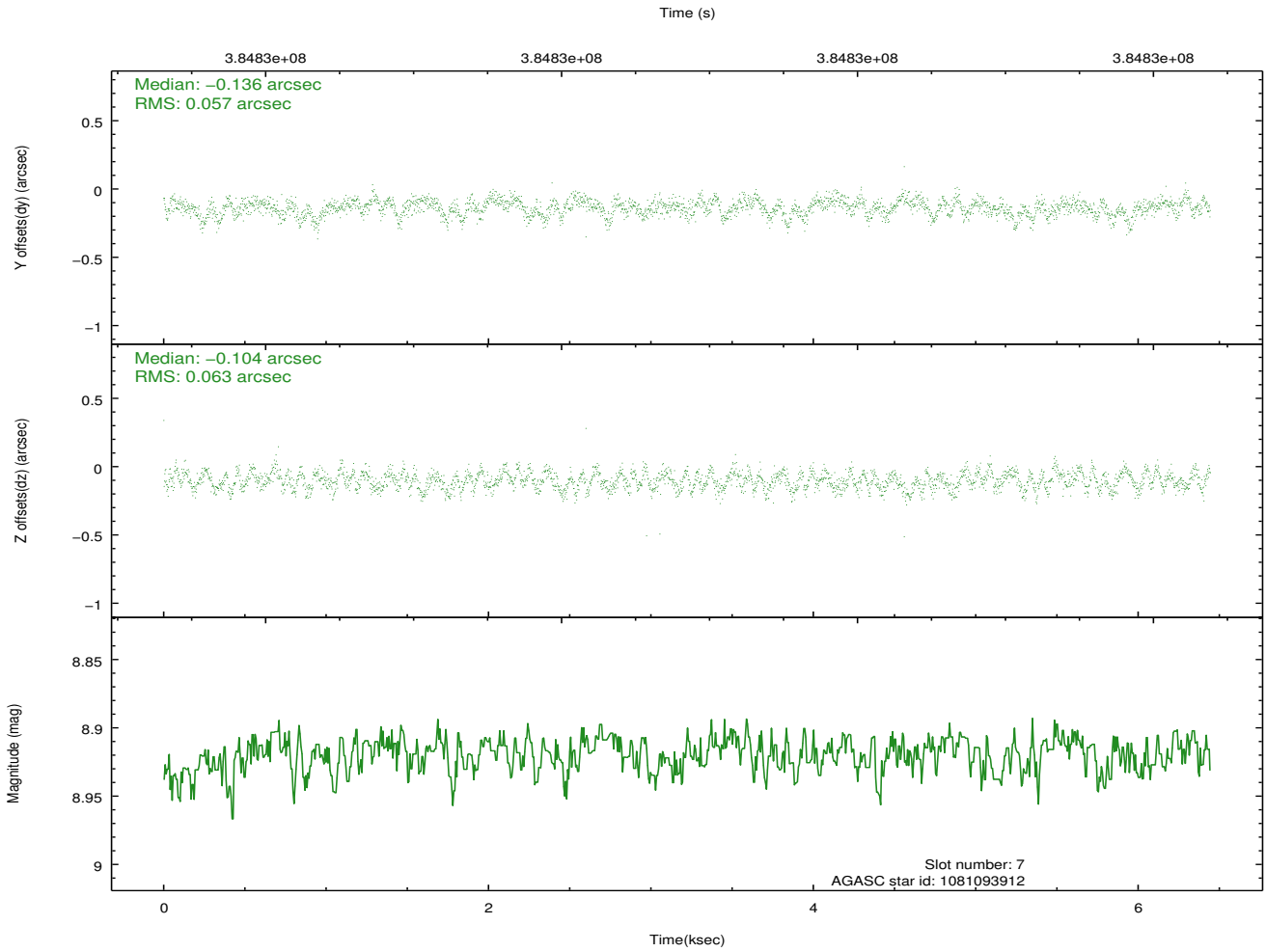
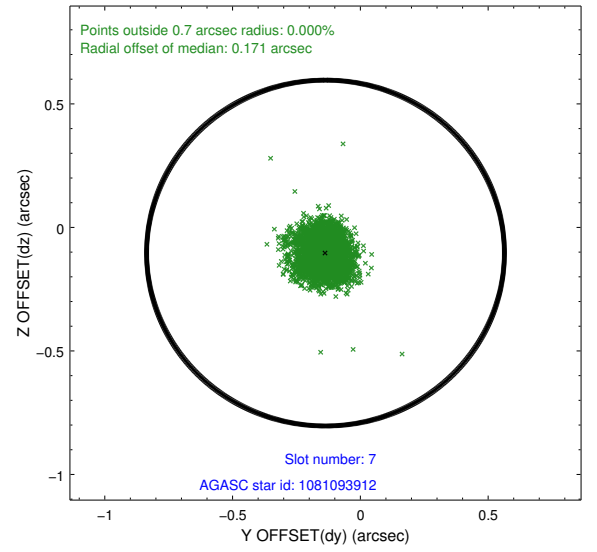
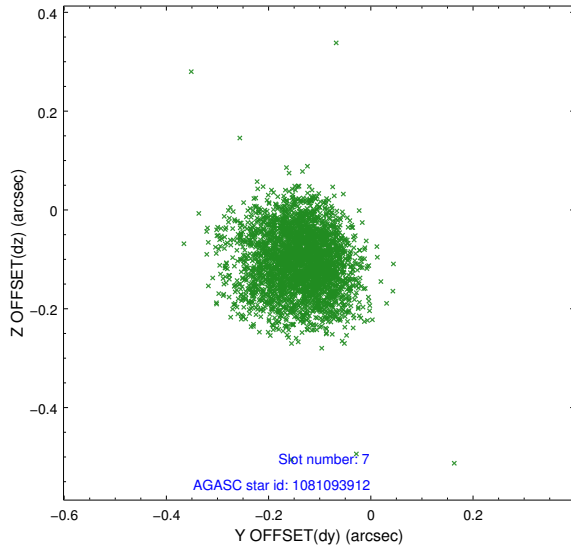
2.4.3 Slot 5



2.4.4 Slot 6

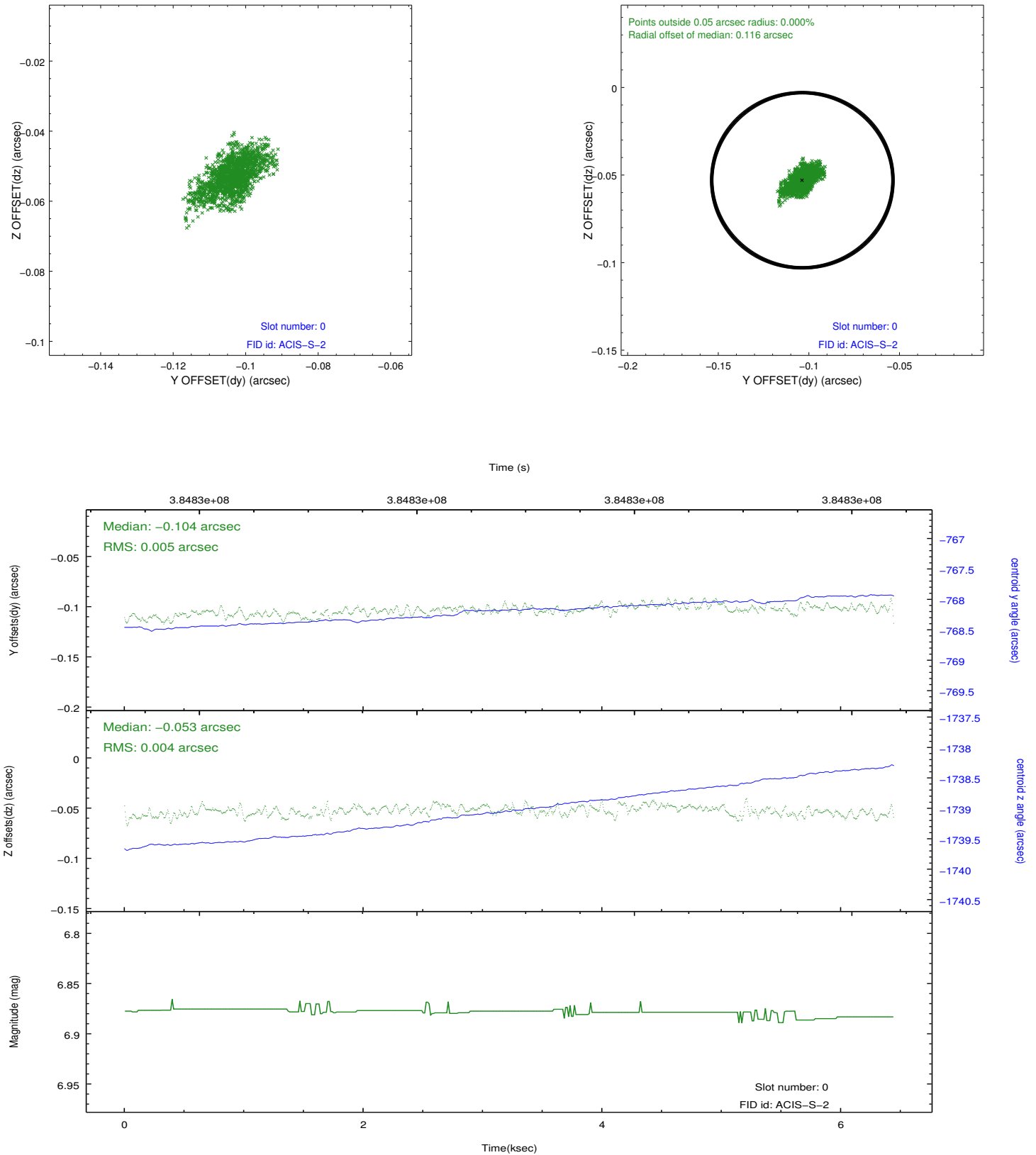


2.4.5 Slot 7

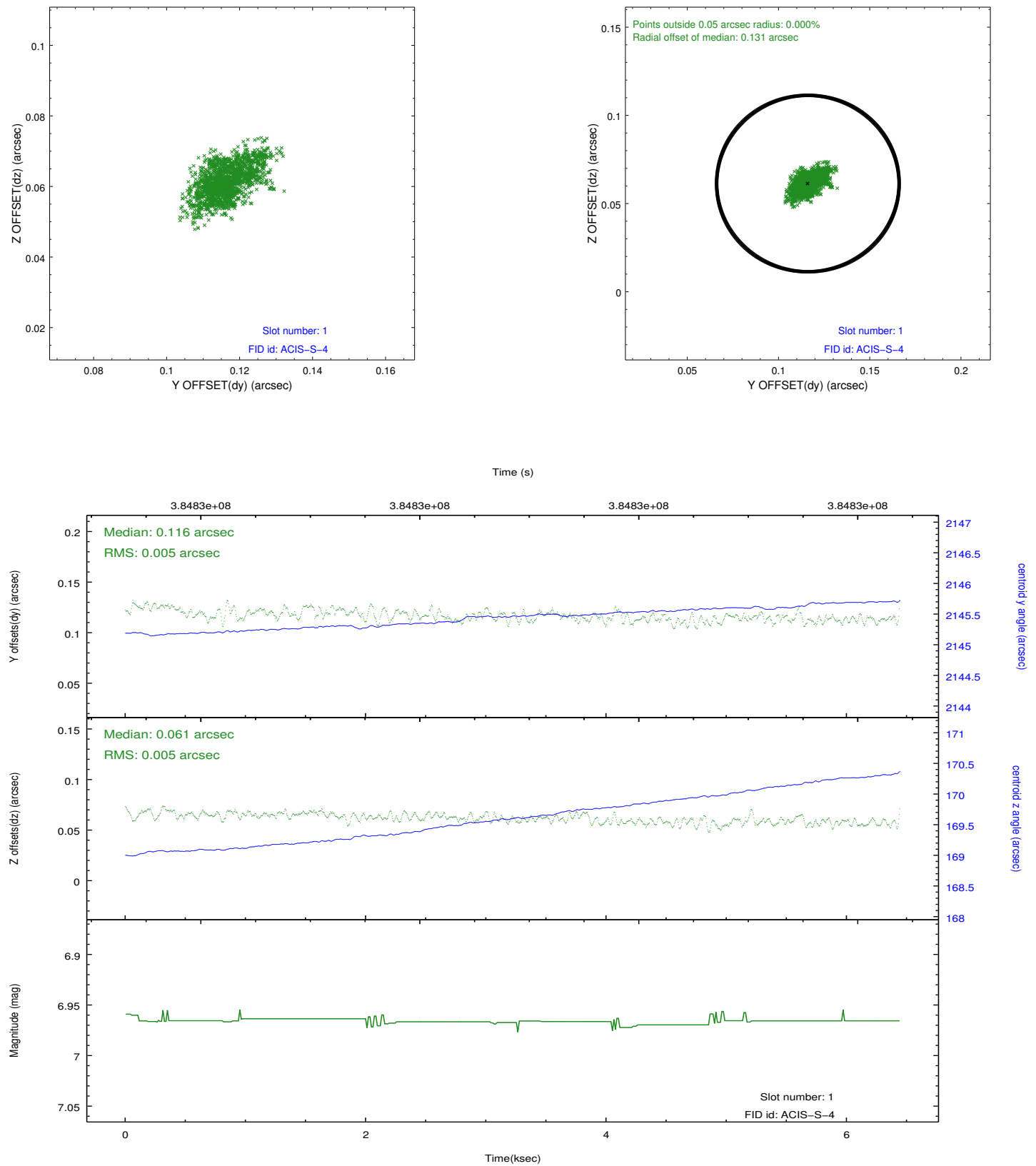


2.5 FID Slots

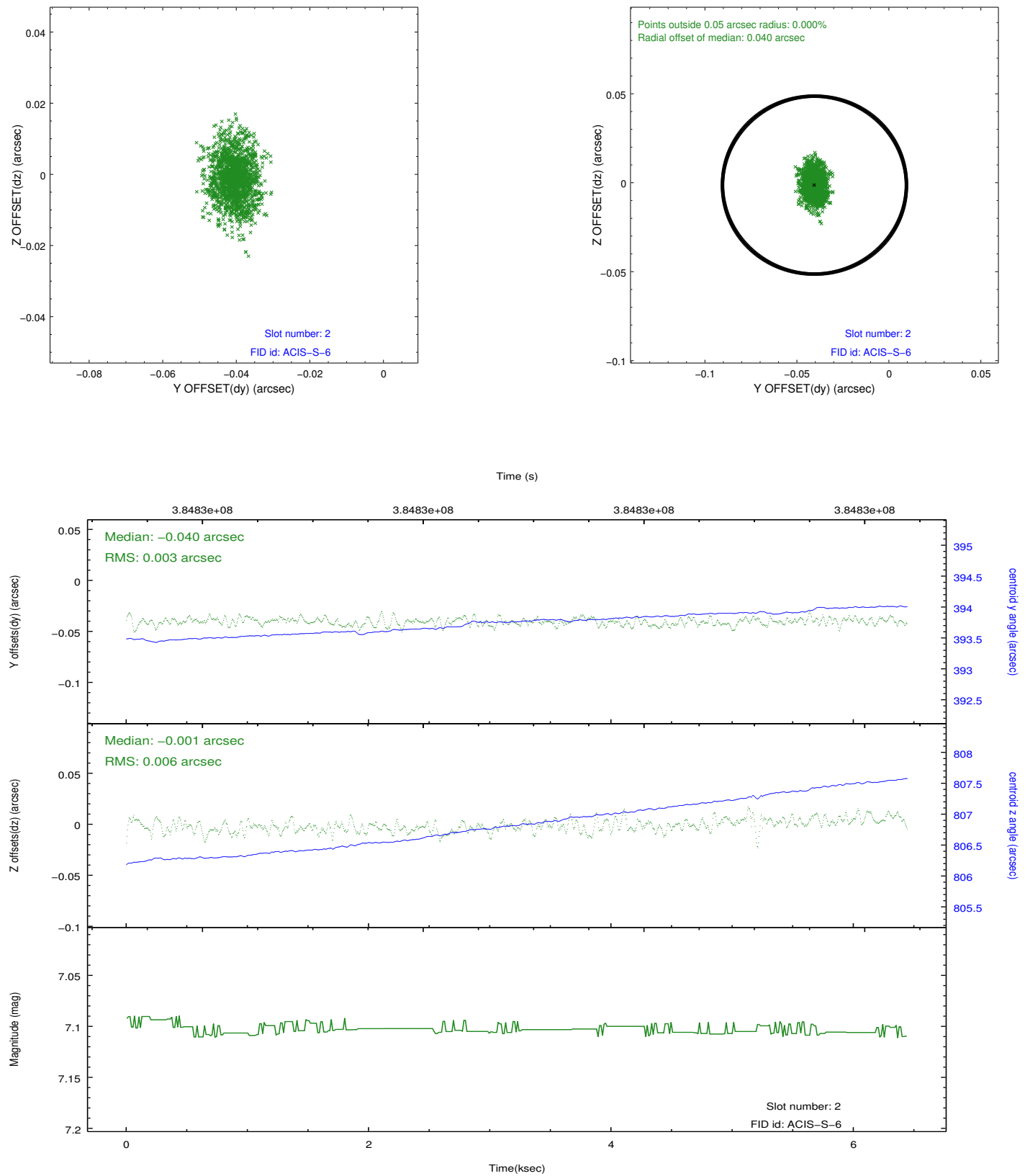
2.5.1 Slot 0



2.5.2 Slot 1



2.5.3 Slot 2



A Summary

A.1 Status

V&V Scientist	Jen Lauer
V&V Date (YYYY-MM-DD)	2012.06.28
V&V Edition	1
V&V Disposition and Status	OK
V&V Charge Time	6.4427998902202

A.2 Comments