

V&V Reference Report

L2 ASCDS Version : 8.4.5

Observation 11000 - L2 Version 2
Chandra X-Ray Center

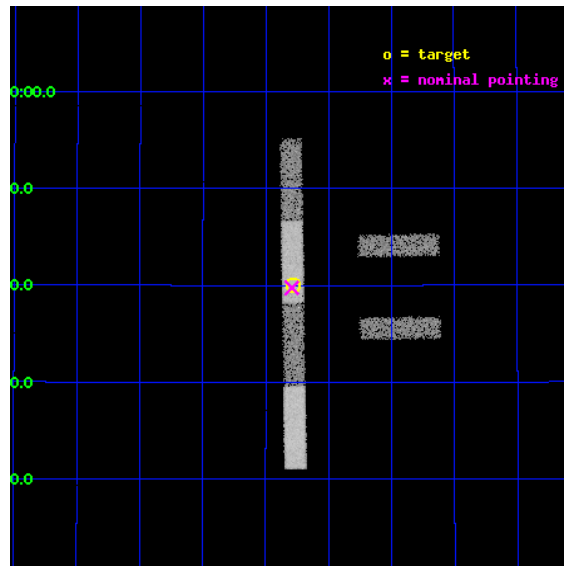
L2 Processing Date : Jun 18 2012

Contents

1	Front	2
2	OBI	3
2.1	OBI	3
2.1.1	Images	3
2.1.2	Bias	3
2.1.3	Parameters	4
2.1.4	Events	4
2.2	Compared Parameters	5
2.3	Aspect	6
2.4	Star Slots	9
2.4.1	Slot 3	9
2.4.2	Slot 4	10
2.4.3	Slot 5	11
2.4.4	Slot 6	12
2.4.5	Slot 7	13
2.5	FID Slots	14
2.5.1	Slot 0	14
2.5.2	Slot 1	15
2.5.3	Slot 2	16
A	Summary	17
A.1	Status	17
A.2	Comments	17

1 Front

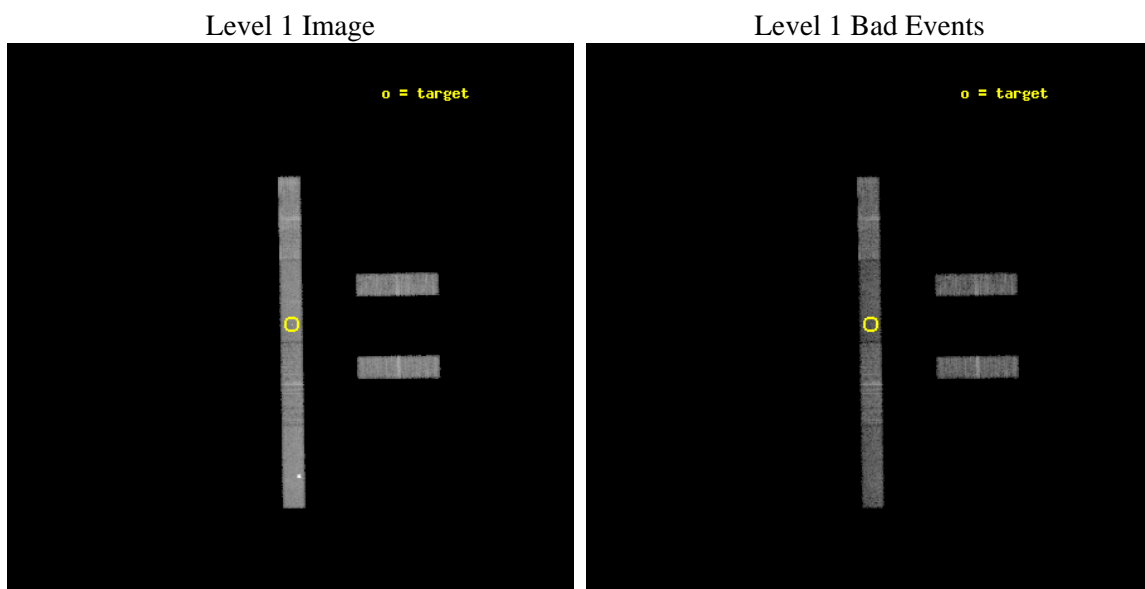
seq_num	200631	Sequence number
obs_id	11000	Observation id
title	NeII as a Tracer for X-Rays in Disks Around T Tauri Stars	Proposal
observer	Prof. Manuel Guedel	Principal investigator
object	CoKu Tau/4	Source name
dtcycle	0	
cycle	P	events from which exps? Prim/Second/Both
ra_targ	70.32	Observer's specified target RA [deg]
dec_targ	28.666667	Observer's specified target Dec [deg]
ra_nom	70.322897097556	Nominal RA [deg]
dec_nom	28.662536159086	Nominal Dec [deg]
roll_nom	269.15524121838	Nominal Roll [deg]
revision	2	Processing version of data
ontime	10154.100220084	Sum of GTIs [s]
livetime	9788.8857902375	Livetime [s]
ontime2	10154.100220084	Sum of GTIs [s]
ontime3	10154.100220084	Sum of GTIs [s]
ontime5	10154.100220084	Sum of GTIs [s]
ontime6	10154.100220084	Sum of GTIs [s]
ontime7	10154.100220084	Sum of GTIs [s]
ontime8	10154.100220084	Sum of GTIs [s]
l2events	37597	Number of level 2 events



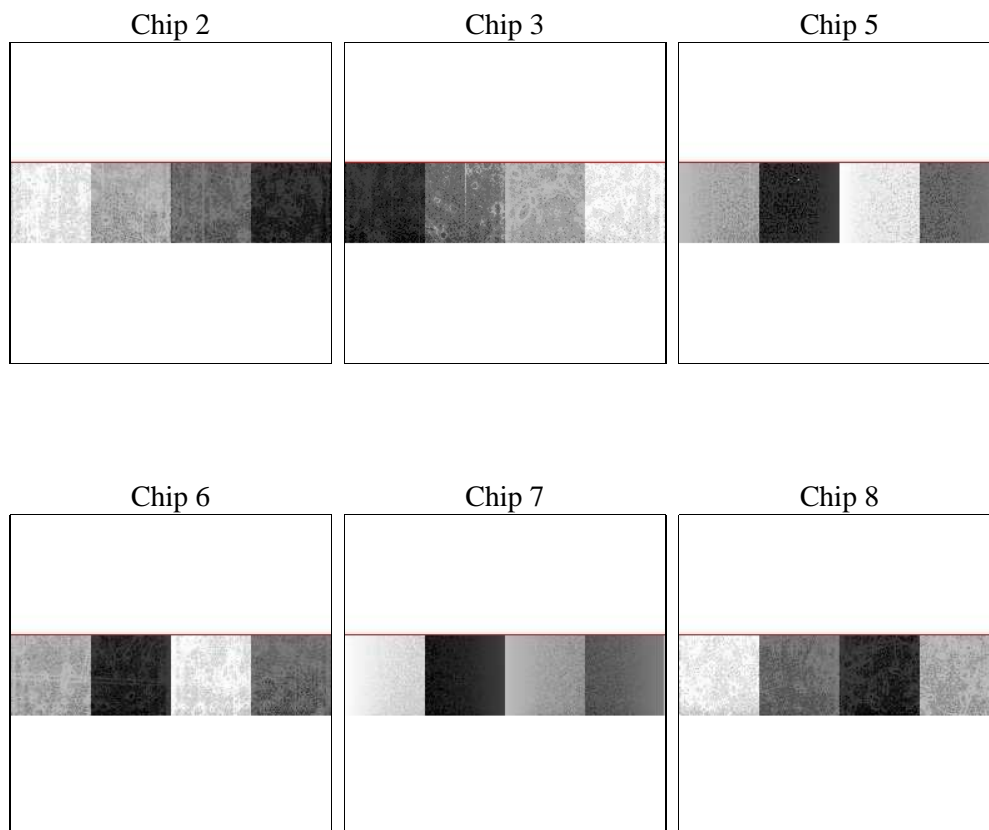
2 OBI

2.1 OBI

2.1.1 Images



2.1.2 Bias



2.1.3 Parameters

obi_num	0	Obi number	sched_exp_time	10000.000000	[s] Scheduled observation exposure time
ascdsver	8.4.5	Processing system revision	ontime	10154.100220084	Sum of GTIs [s]
caldsver	4.4.10	 	ontime2	10154.100220084	Sum of GTIs [s]
date	2012-06-18T20:15:08	Date and time of file creation	ontime3	10154.100220084	Sum of GTIs [s]
revision	2	Processing version of data	ontime5	10154.100220084	Sum of GTIs [s]
			ontime6	10154.100220084	Sum of GTIs [s]
			ontime7	10154.100220084	Sum of GTIs [s]
			ontime8	10154.100220084	Sum of GTIs [s]
			l1events	213364	Number of level 1 events

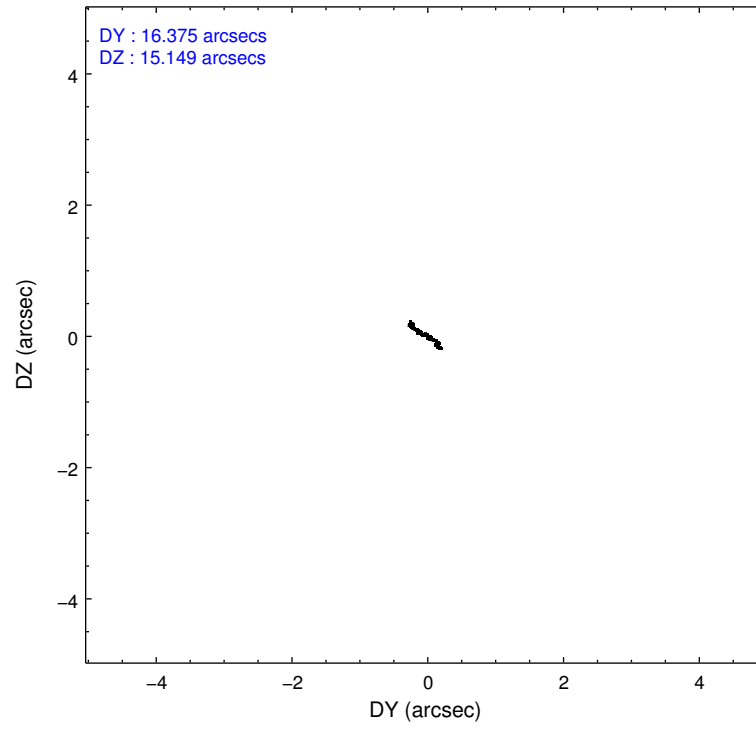
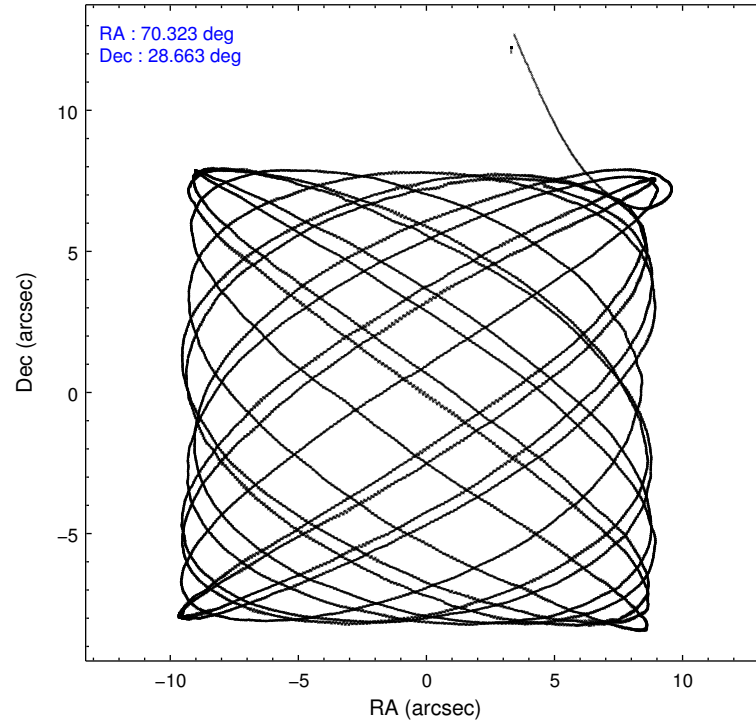
2.1.4 Events

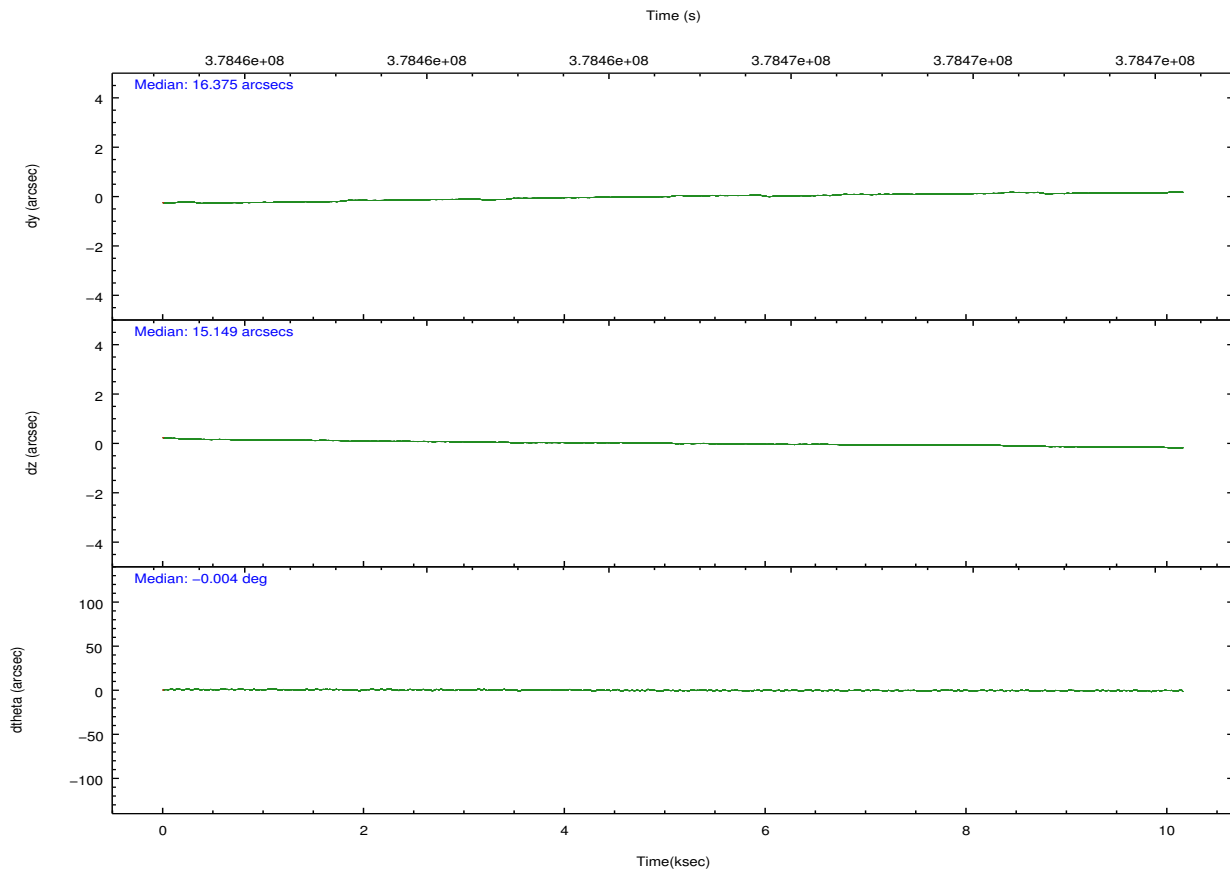
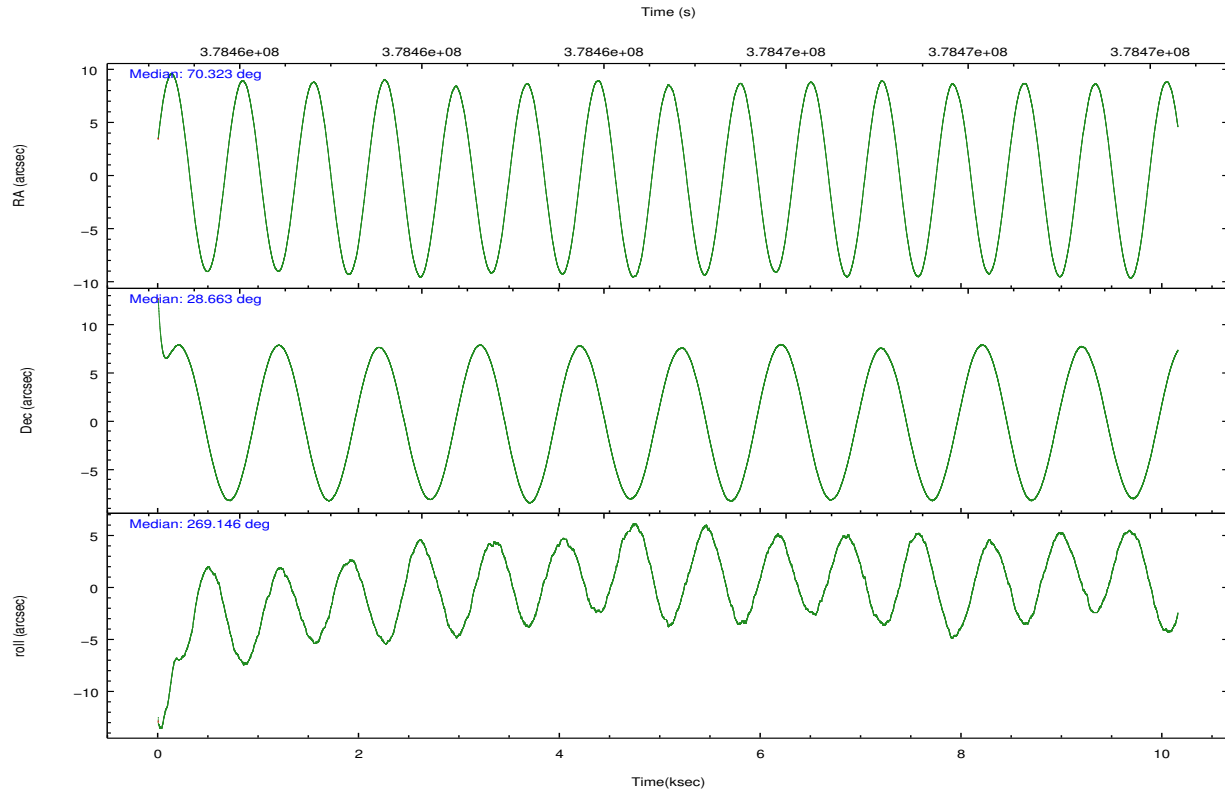
	ccd 2	ccd 3	ccd 5	ccd 6	ccd 7	ccd 8		ccd 2	ccd 3	ccd 5	ccd 6	ccd 7	ccd 8
level 1 events	31779	29374	48478	31379	32331	40023	grade 0 events	1001	924	11485	1064	1497	2397
rejected events	28978	26844	23450	28450	19198	32146		3%	3%	23%	3%	4%	5%
rejected %	91%	91%	48%	90%	59%	80%	grade 1 events	12	14	86	14	48	22
								0%	0%	0%	0%	0%	0%
							grade 2 events	745	554	5808	655	3269	2111
								2%	1%	11%	2%	10%	5%
							grade 3 events	445	443	1192	530	1660	902
								1%	1%	2%	1%	5%	2%
							grade 4 events	508	442	1171	497	1596	966
								1%	1%	2%	1%	4%	2%
							grade 5 events	1093	1077	3437	1123	3423	1586
								3%	3%	7%	3%	10%	3%
							grade 6 events	578	566	9518	627	7301	2907
								1%	1%	19%	1%	22%	7%
							grade 7 events	27397	25354	15781	26869	13537	29132
								86%	86%	32%	85%	41%	72%

2.2 Compared Parameters

Parameter	Planned	Actual	Parameter	Planned	Actual
Instrument	ACIS	ACIS	Obspar format version number	7	7
Detector	ACIS-235678	ACIS-235678	Obspar file type	PREDICTED	ACTUAL
Grating	NONE	NONE	Obspar update status	NONE	UPDATED
Data mode	VFAINT	VFAINT	CCD I0 on	N	N
Observation mode	POINTING	POINTING	CCD I1 on	N	N
[deg] Pointing RA	70.307275	70.32289709755582	CCD I2 on	O1	Y
[deg] Pointing Dec	28.686191	28.6625361590861	CCD I3 on	O2	Y
[deg] Pointing Roll	269.006103	269.1552412183811	CCD S0 on	N	N
[mm] SIM focus pos	-0.684267	-0.6828225247311905	CCD S1 on	Y	Y
[mm] SIM defocus	0	0.001444936568705701	CCD S2 on	Y	Y
[mm] SIM translation stage pos	-190.132523	-190.1400660498719	CCD S3 on	Y	Y
[mm] SIM translation stage offset	0	0.00754346686406393	CCD S4 on	Y	Y
[s] Observation start time (MET)	378459777.184000	378457993.23741	CCD S5 on	N	N
Observation start date	2009-12-29T07:41:51	2009-12-29T07:13:13	Number of optional ACIS chips dropped	0	0
[s] Observation end time (MET)	378469777.184000	378470210.72552	On-chip summing requested	N	N
Observation end date	2009-12-29T10:28:31	2009-12-29T10:36:50	Subarray requested	CUSTOM	1/4
Read mode	TIMED	TIMED	Subarray start row	385	385
			Subarray row count	256	256
			Alternating exposures requested	N	N
			[s] Primary exposure time	0.000000	1.1

2.3 Aspect



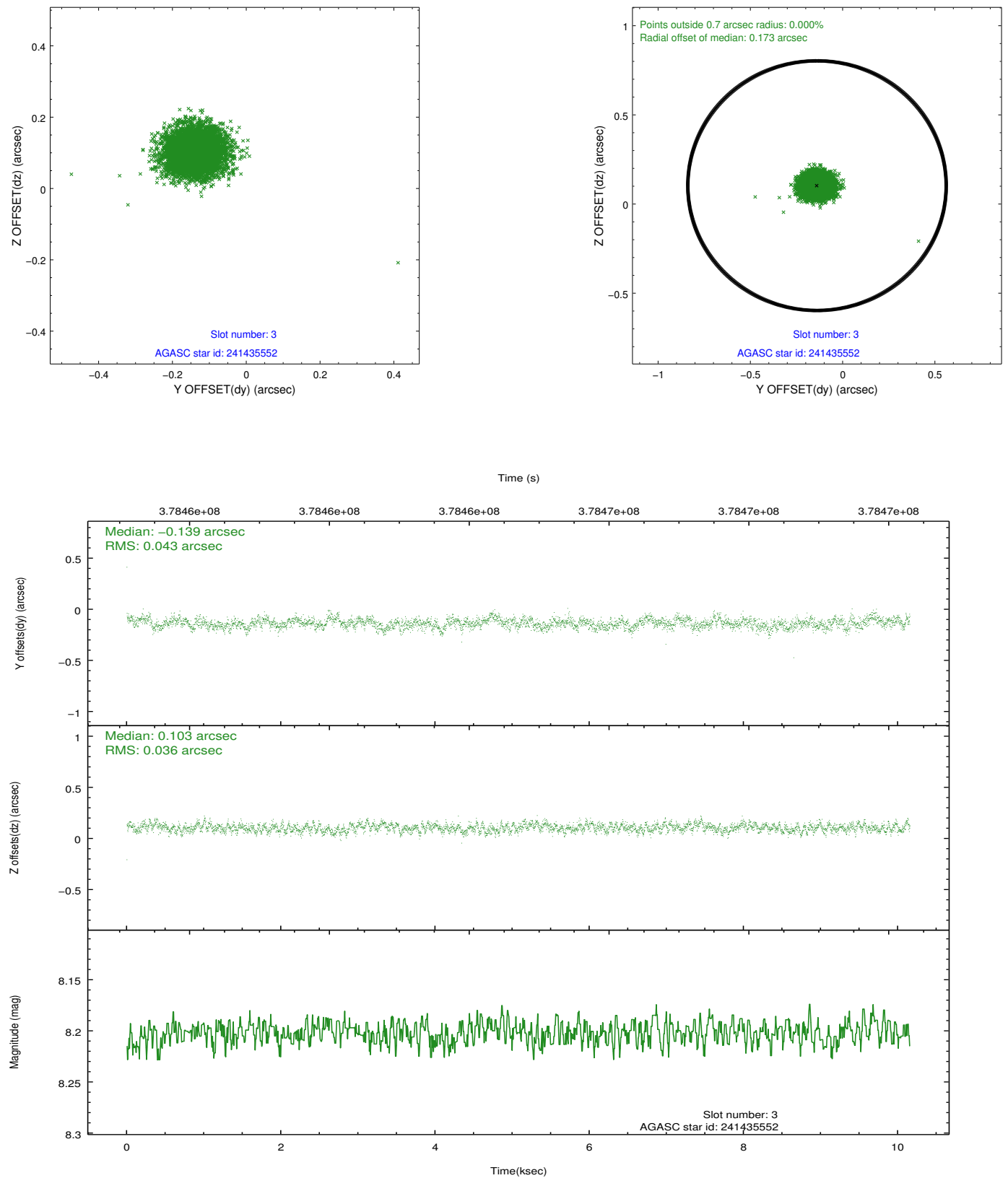


Slot Statistics

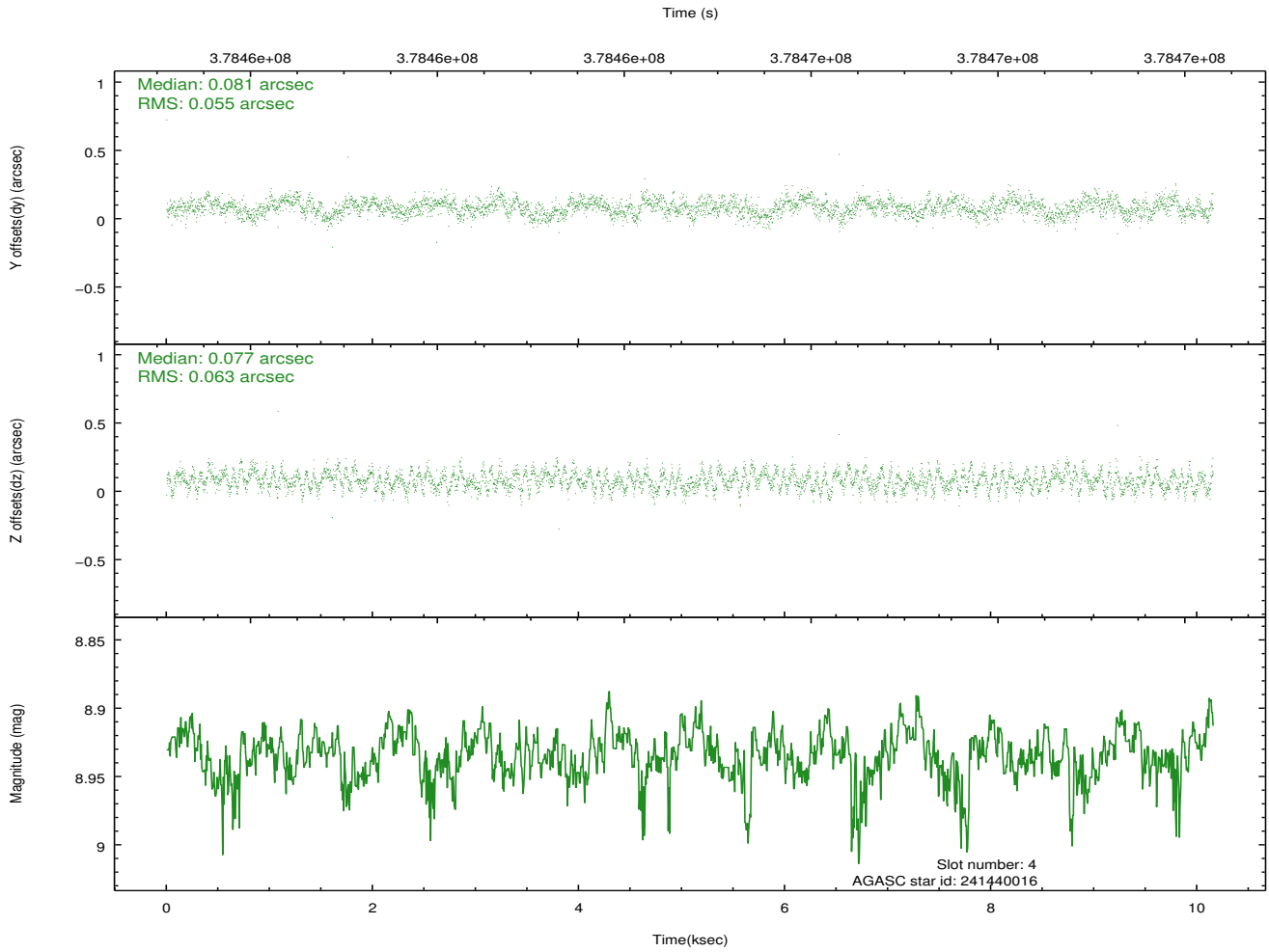
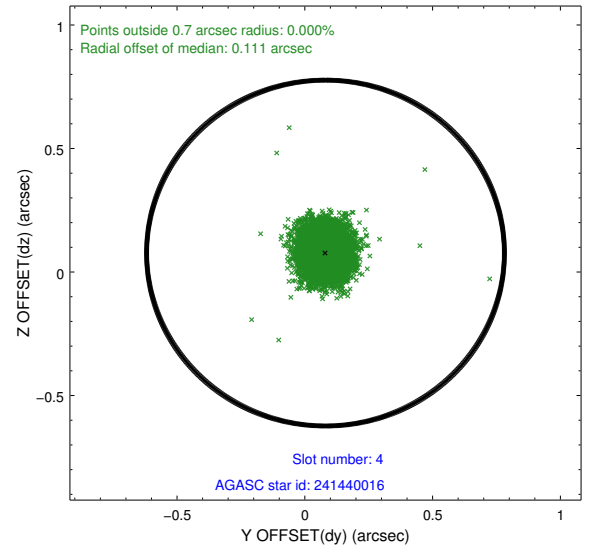
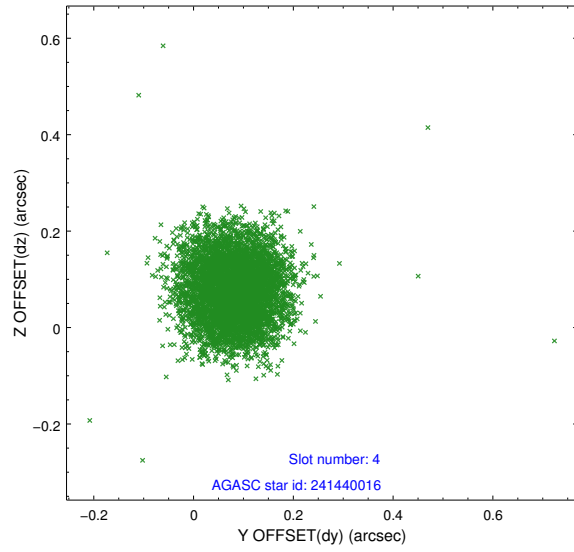
slot	status	id	mag	n_pts	med_dy	med_dz	dr1	dr2	ra	dec	mean_y	mean_z
0	FID	ACIS-S-2	6.90	2478	-0.111	-0.073	0.006	0.011	0.000000	0.000000	-769.47	-1736.61
1	FID	ACIS-S-4	6.98	2478	0.144	0.049	0.007	0.012	0.000000	0.000000	2143.82	171.45
2	FID	ACIS-S-6	7.12	2478	-0.060	0.031	0.007	0.012	0.000000	0.000000	393.23	809.42
3	GUIDE	241435552	8.20	4954	-0.139	0.103	0.059	0.095	70.427105	29.208135	-1884.73	344.07
4	GUIDE	241440016	8.93	4944	0.081	0.077	0.089	0.138	69.911517	28.783870	-331.63	-1254.43
5	GUIDE	241444120	8.50	4950	0.035	0.112	0.097	0.150	69.618206	28.717620	-80.63	-2177.89
6	GUIDE	241447192	8.99	4944	0.059	-0.017	0.079	0.125	69.884788	28.467916	807.24	-1323.47
7	GUIDE	241447296	6.22	4954	-0.053	-0.274	0.095	0.169	70.332338	28.614992	255.77	83.63

2.4 Star Slots

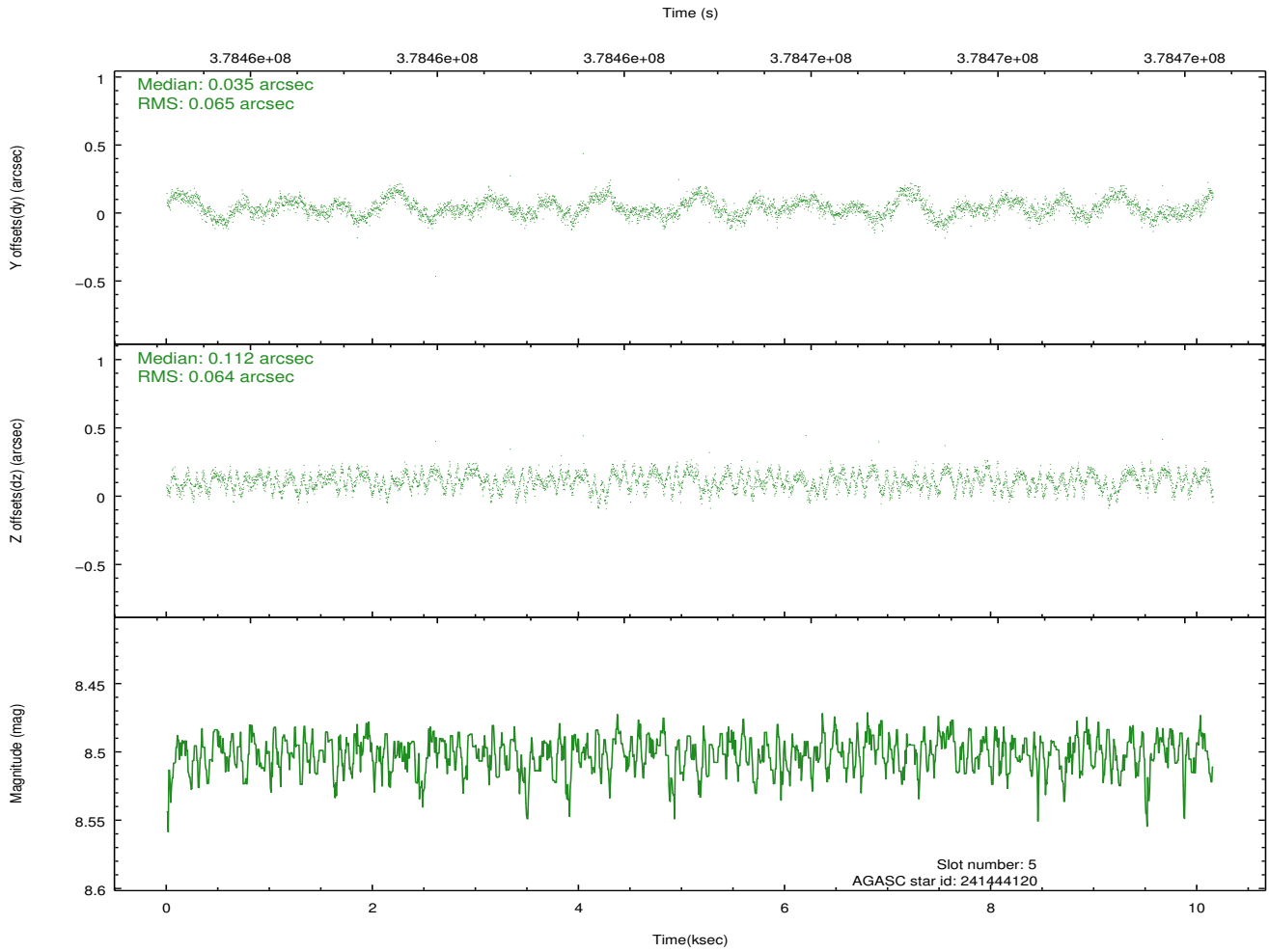
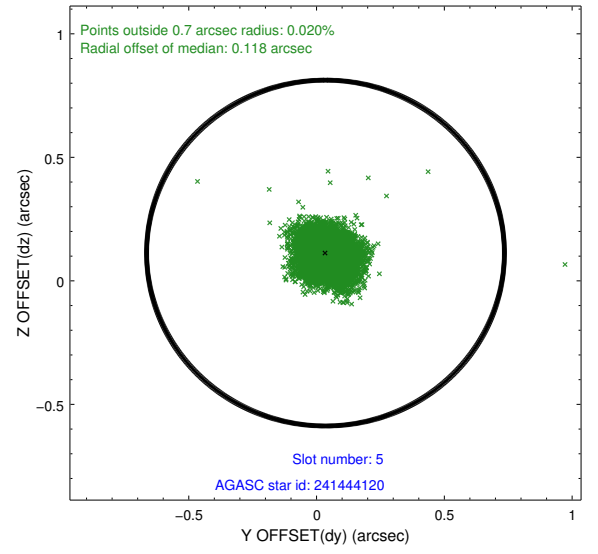
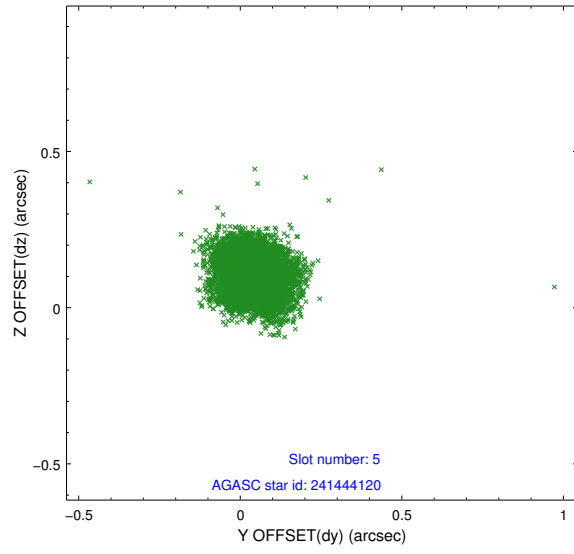
2.4.1 Slot 3



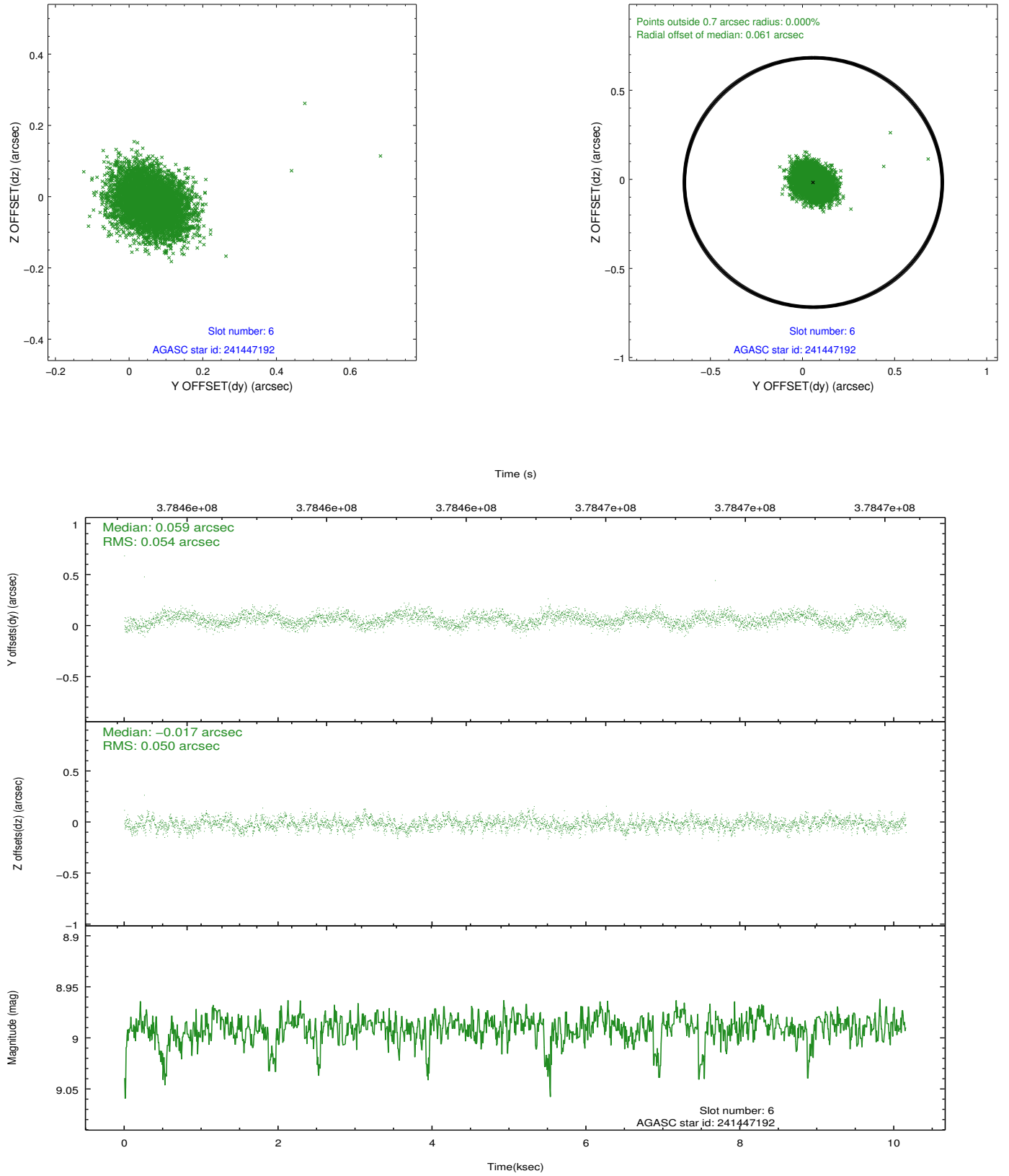
2.4.2 Slot 4



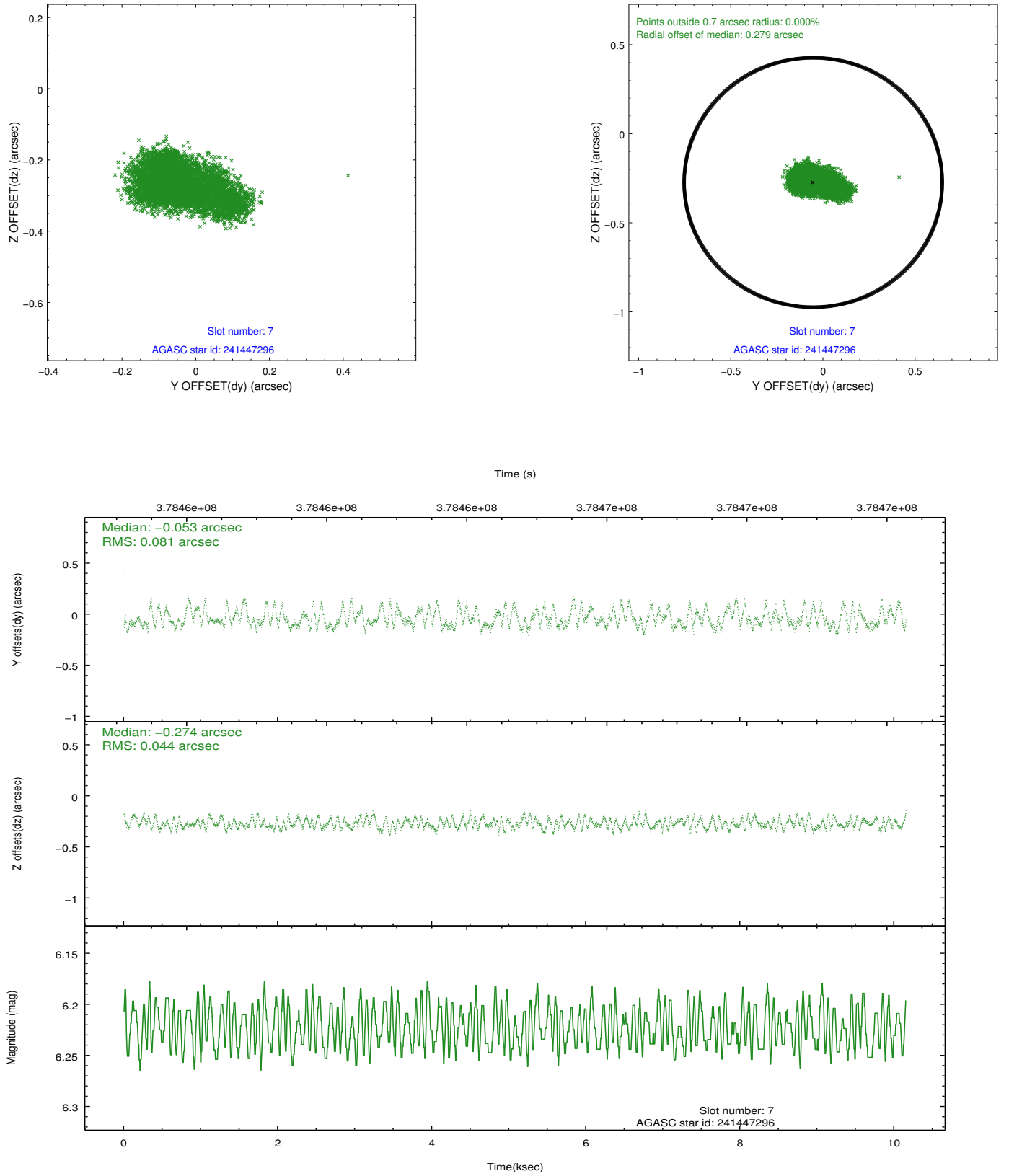
2.4.3 Slot 5



2.4.4 Slot 6

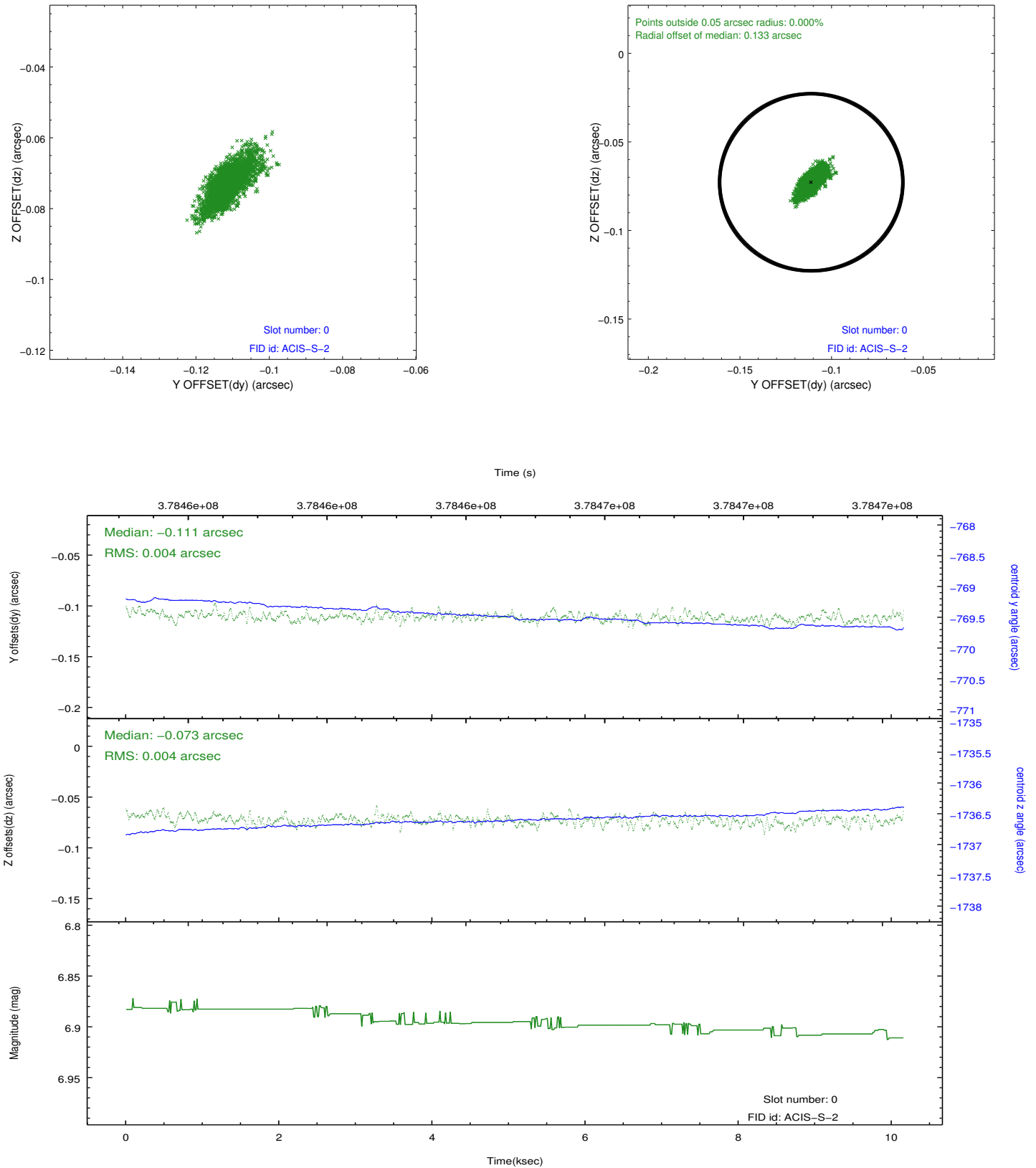


2.4.5 Slot 7

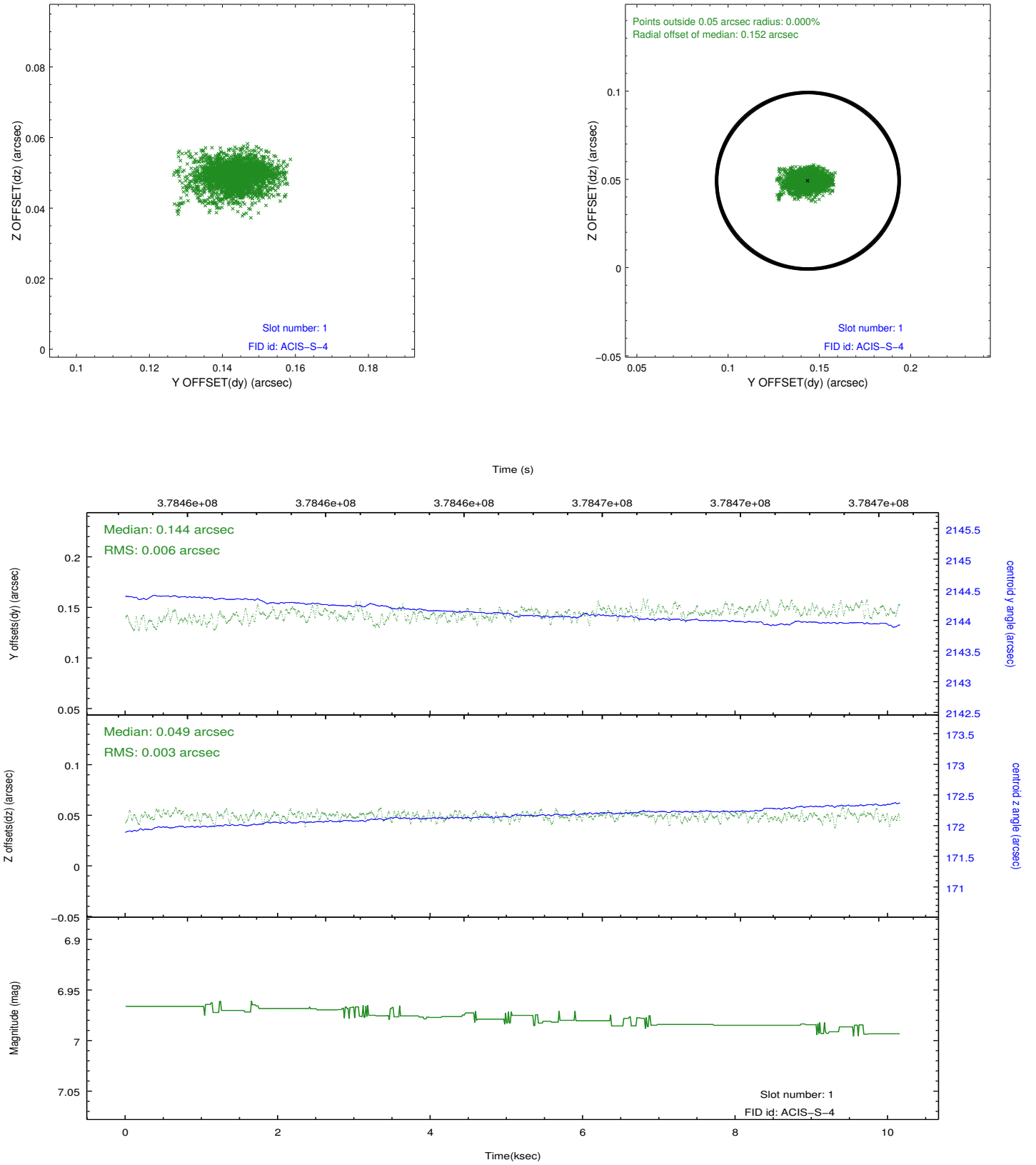


2.5 FID Slots

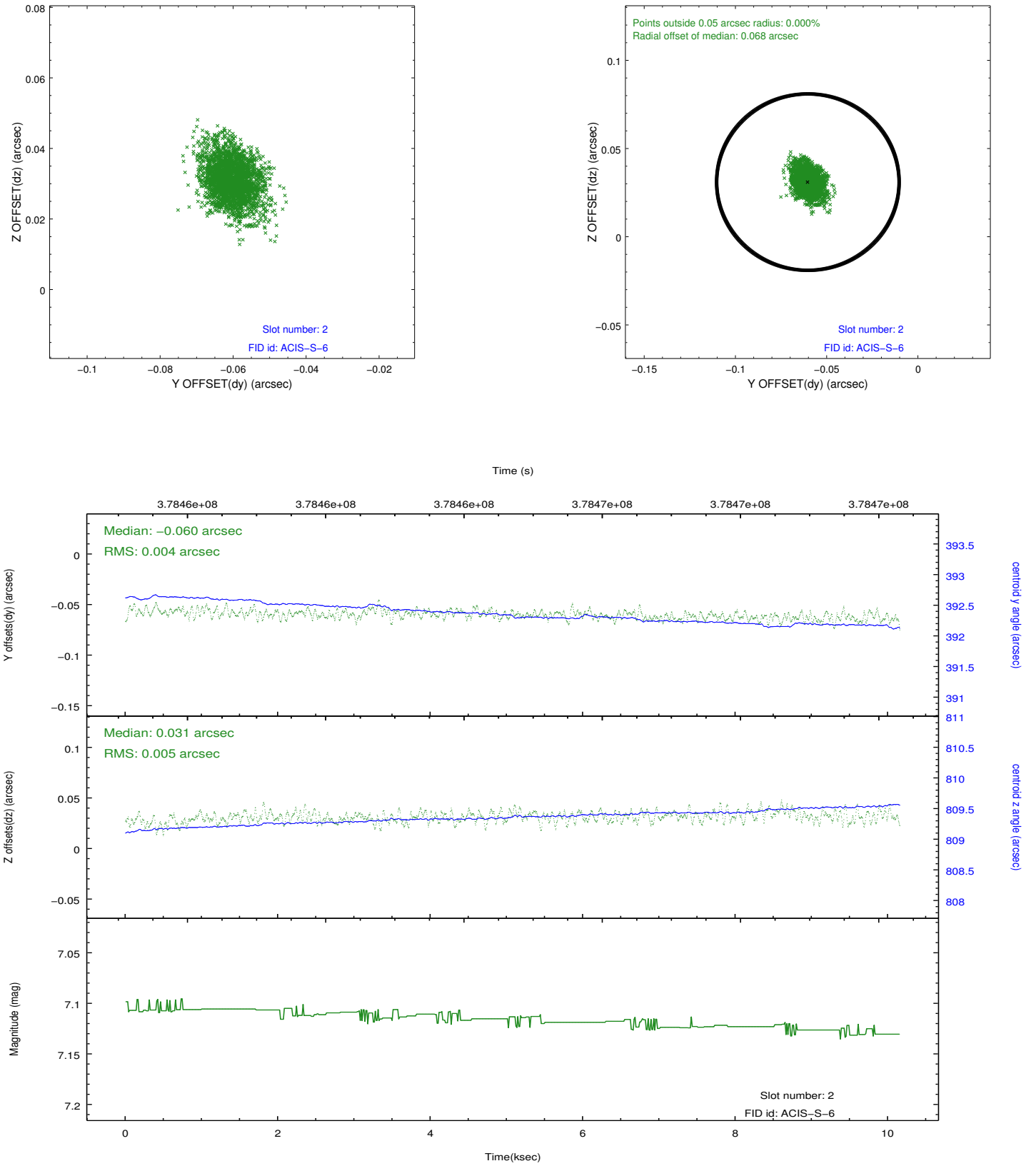
2.5.1 Slot 0



2.5.2 Slot 1



2.5.3 Slot 2



A Summary

A.1 Status

V&V Scientist	Beth Sundheim
V&V Date (YYYY-MM-DD)	2012.06.22
V&V Edition	1
V&V Disposition and Status	OK
V&V Charge Time	10.154100220084

A.2 Comments