

V&V Reference Report

L2 ASCDS Version : 8.4.5

Observation 10979 - L2 Version 2
Chandra X-Ray Center

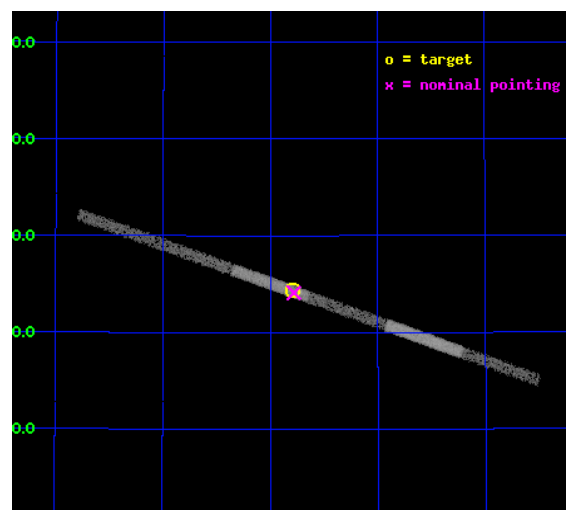
L2 Processing Date : Jun 15 2012

Contents

1	Front	2
2	OBI	3
2.1	OBI	3
2.1.1	Images	3
2.1.2	Bias	3
2.1.3	Parameters	4
2.1.4	Events	4
2.2	Compared Parameters	5
2.3	Aspect	6
2.4	Star Slots	9
2.4.1	Slot 3	9
2.4.2	Slot 4	10
2.4.3	Slot 5	11
2.4.4	Slot 6	12
2.4.5	Slot 7	13
2.5	FID Slots	14
2.5.1	Slot 0	14
2.5.2	Slot 1	15
2.5.3	Slot 2	16
A	Summary	17
A.1	Status	17
A.2	Comments	17

1 Front

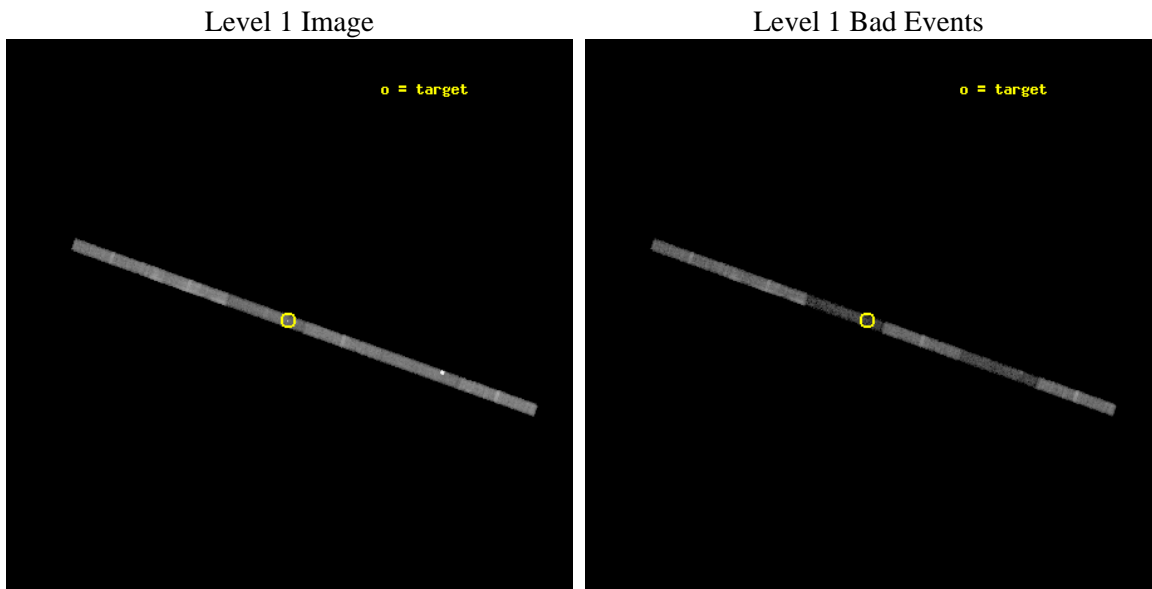
seq_num	200611	Sequence number
obs_id	10979	Observation id
title	Star-Planet Interaction in the upsilon Andromedae extrasolar planet system	Proposal title
observer	Dr. Katja Poppenhaeger	Principal investigator
object	HD 9826	Source name
dtcycle	0	
cycle	P	events from which exps? Prim/Second/Both
ra_targ	24.199167	Observer's specified target RA [deg]
dec_targ	41.4055	Observer's specified target Dec [deg]
ra_nom	24.195098060472	Nominal RA [deg]
dec_nom	41.401690779163	Nominal Dec [deg]
roll_nom	199.54647582921	Nominal Roll [deg]
revision	2	Processing version of data
ontime	15140.999742091	Sum of GTIs [s]
livetime	14302.466559786	Livetime [s]
ontime4	15140.999742091	Sum of GTIs [s]
ontime5	15140.999742091	Sum of GTIs [s]
ontime6	15140.999742091	Sum of GTIs [s]
ontime7	15140.999742091	Sum of GTIs [s]
ontime8	15140.258702099	Sum of GTIs [s]
ontime9	15140.999742091	Sum of GTIs [s]
l2events	20619	Number of level 2 events



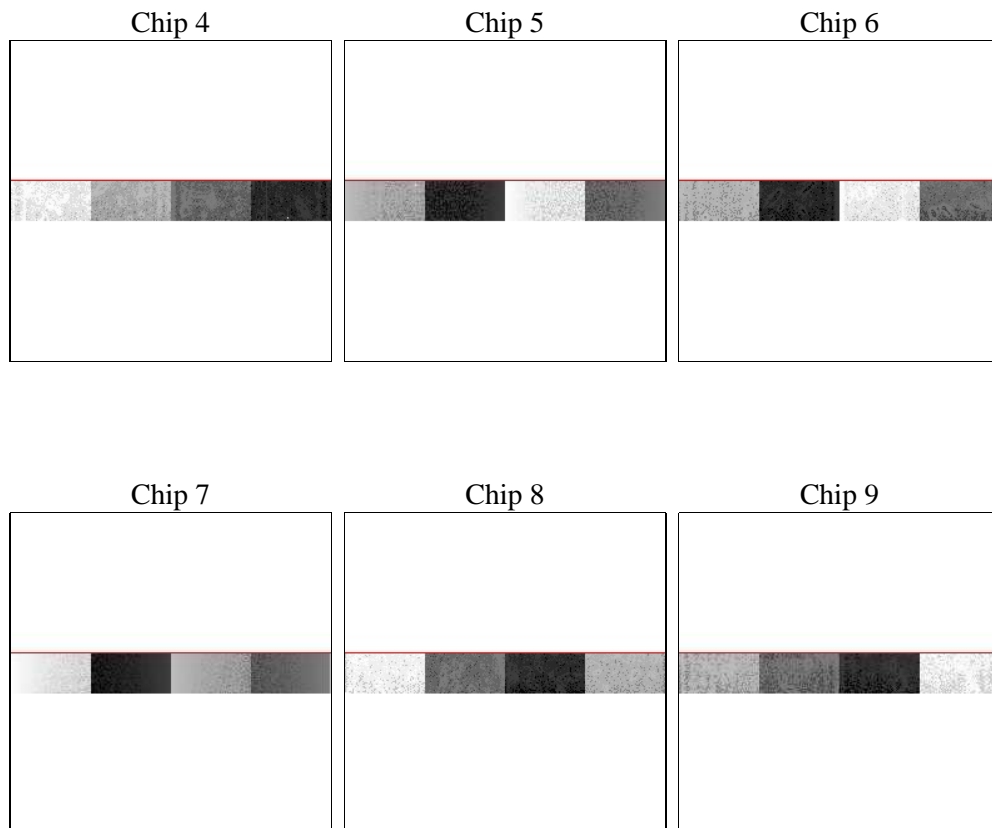
2 OBI

2.1 OBI

2.1.1 Images



2.1.2 Bias



2.1.3 Parameters

obi_num	0	Obi number	sched_exp_time	15000.000000	[s] Scheduled observation exposure time
ascdsver	8.4.5	Processing system revision	ontime	15140.999742091	Sum of GTIs [s]
caldsver	4.4.10	 	ontime4	15140.999742091	Sum of GTIs [s]
date	2012-06-15T22:42:43	Date and time of file creation	ontime5	15140.999742091	Sum of GTIs [s]
revision	2	Processing version of data	ontime6	15140.999742091	Sum of GTIs [s]
			ontime7	15140.999742091	Sum of GTIs [s]
			ontime8	15140.258702099	Sum of GTIs [s]
			ontime9	15140.999742091	Sum of GTIs [s]
			l1events	144945	Number of level 1 events

2.1.4 Events

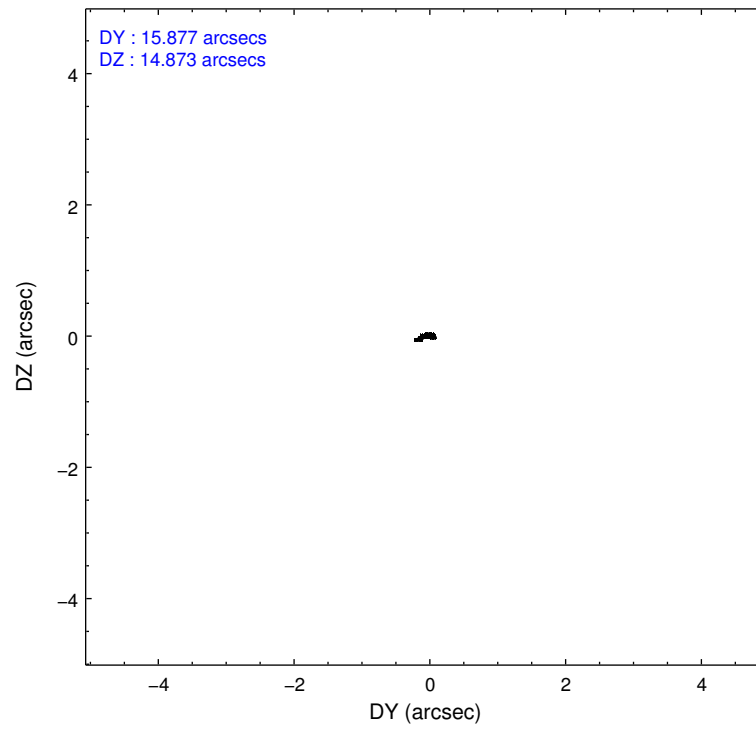
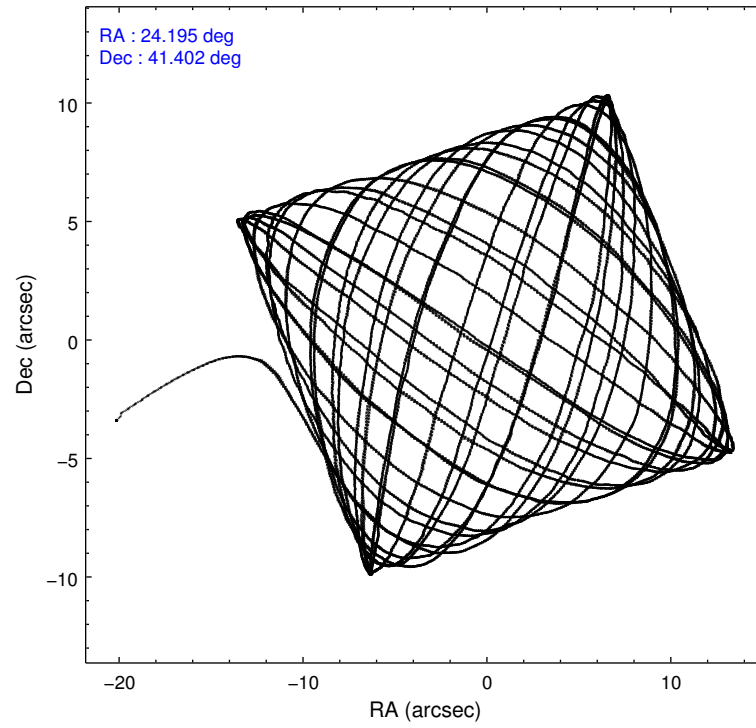
	ccd 4	ccd 5	ccd 6	ccd 7	ccd 8	ccd 9
level 1 events	25206	37731	20778	12497	29852	18881
rejected events	23072	9001	18933	5433	23890	17139
rejected %	91%	23%	91%	43%	80%	90%

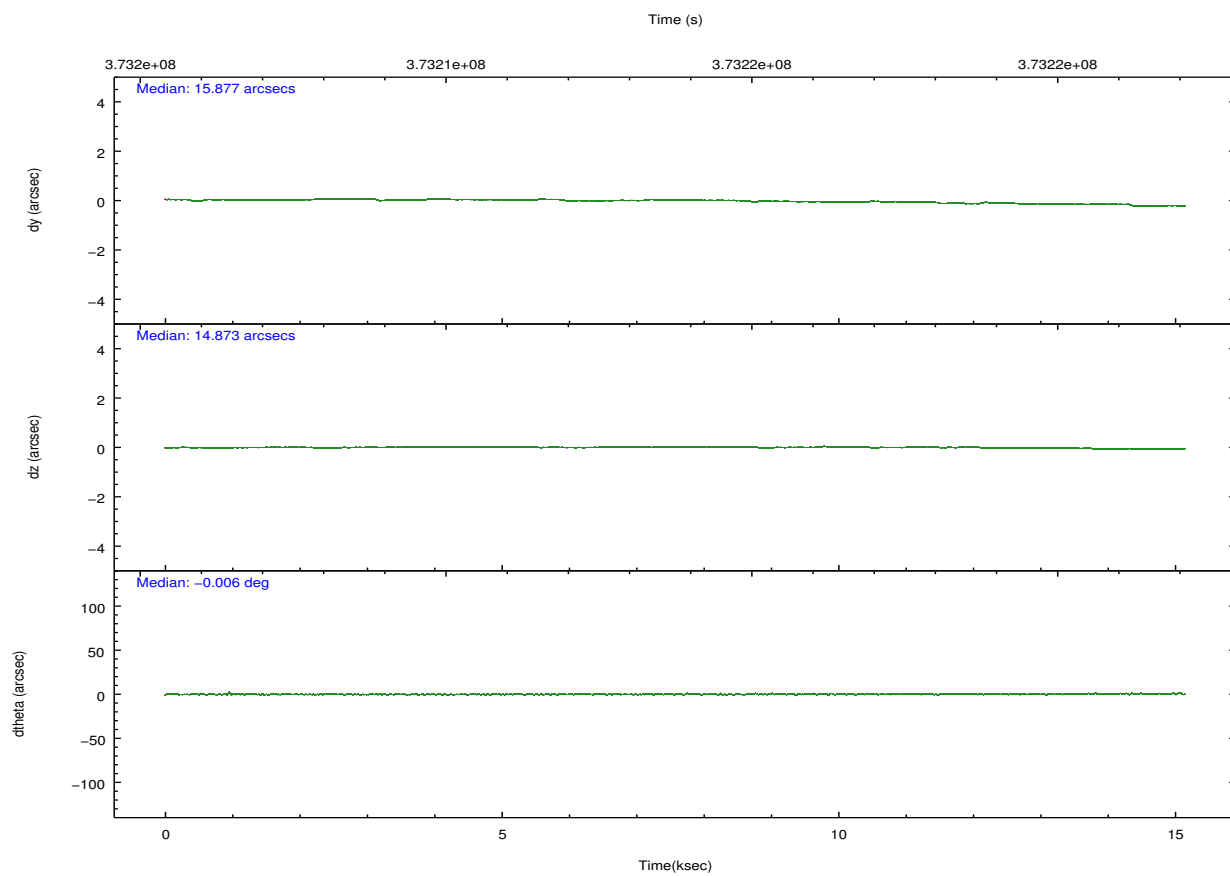
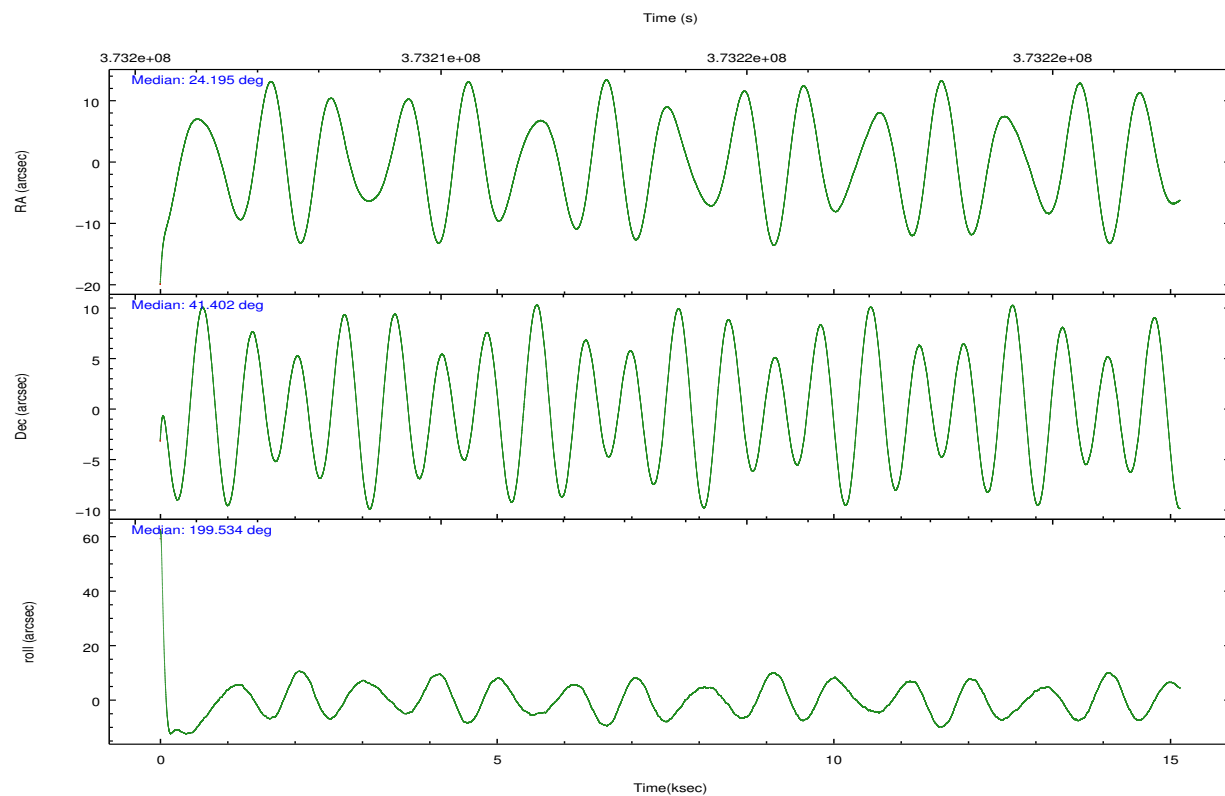
	ccd 4	ccd 5	ccd 6	ccd 7	ccd 8	ccd 9
grade 0 events	863	17728	621	1367	1439	572
	3%	46%	2%	10%	4%	3%
grade 1 events	27	223	7	36	13	7
	0%	0%	0%	0%	0%	0%
grade 2 events	437	7644	332	1778	1437	319
	1%	20%	1%	14%	4%	1%
grade 3 events	400	871	397	1046	689	394
	1%	2%	1%	8%	2%	2%
grade 4 events	380	1070	418	969	684	330
	1%	2%	2%	7%	2%	1%
grade 5 events	423	1500	340	1127	641	349
	1%	3%	1%	9%	2%	1%
grade 6 events	276	4020	275	2486	2237	289
	1%	10%	1%	19%	7%	1%
grade 7 events	22400	4675	18388	3688	22712	16621
	88%	12%	88%	29%	76%	88%

2.2 Compared Parameters

Parameter	Planned	Actual	Parameter	Planned	Actual
Instrument	ACIS	ACIS	Obspar format version number	7	7
Detector	ACIS-456789	ACIS-456789	Obspar file type	PREDICTED	ACTUAL
Grating	NONE	NONE	Obspar update status	NONE	UPDATED
Data mode	FAINT	FAINT	CCD I0 on	N	N
Observation mode	POINTING	POINTING	CCD I1 on	N	N
[deg] Pointing RA	24.218390	24.19509806047171	CCD I2 on	N	N
[deg] Pointing Dec	41.422765	41.40169077916291	CCD I3 on	N	N
[deg] Pointing Roll	199.374367	199.5464758292132	CCD S0 on	O2	Y
[mm] SIM focus pos	-0.684267	-0.6828225247311905	CCD S1 on	O4	Y
[mm] SIM defocus	0	0.001444936568705701	CCD S2 on	O5	Y
[mm] SIM translation stage pos	-190.132523	-190.145094680475	CCD S3 on	Y	Y
[mm] SIM translation stage offset	0	0.01257209746719923	CCD S4 on	O3	Y
Phase constraints	Y	Y	CCD S5 on	O1	Y
[d] Phase period	2.308560	2.308560	Number of optional ACIS chips dropped	0	0
[d] Phase epoch (MJD)	55198.505000	55198.505000	On-chip summing requested	N	N
Phase start	0.962000	0.962000	Subarray requested	CUSTOM	1/8
Phase end	0.038000	0.038000	Subarray start row	449	449
Phase start error	0.163000	0.163000	Subarray row count	128	128
Phase end error	0.163000	0.163000	Alternating exposures requested	N	N
[s] Observation start time (MET)	373206314.184000	373204771.62237	[s] Primary exposure time	0.000000	0.7
Observation start date	2009-10-29T12:24:08	2009-10-29T11:59:31			
[s] Observation end time (MET)	373221314.184000	373222615.84827			
Observation end date	2009-10-29T16:34:08	2009-10-29T16:56:55			
Read mode	TIMED	TIMED			

2.3 Aspect



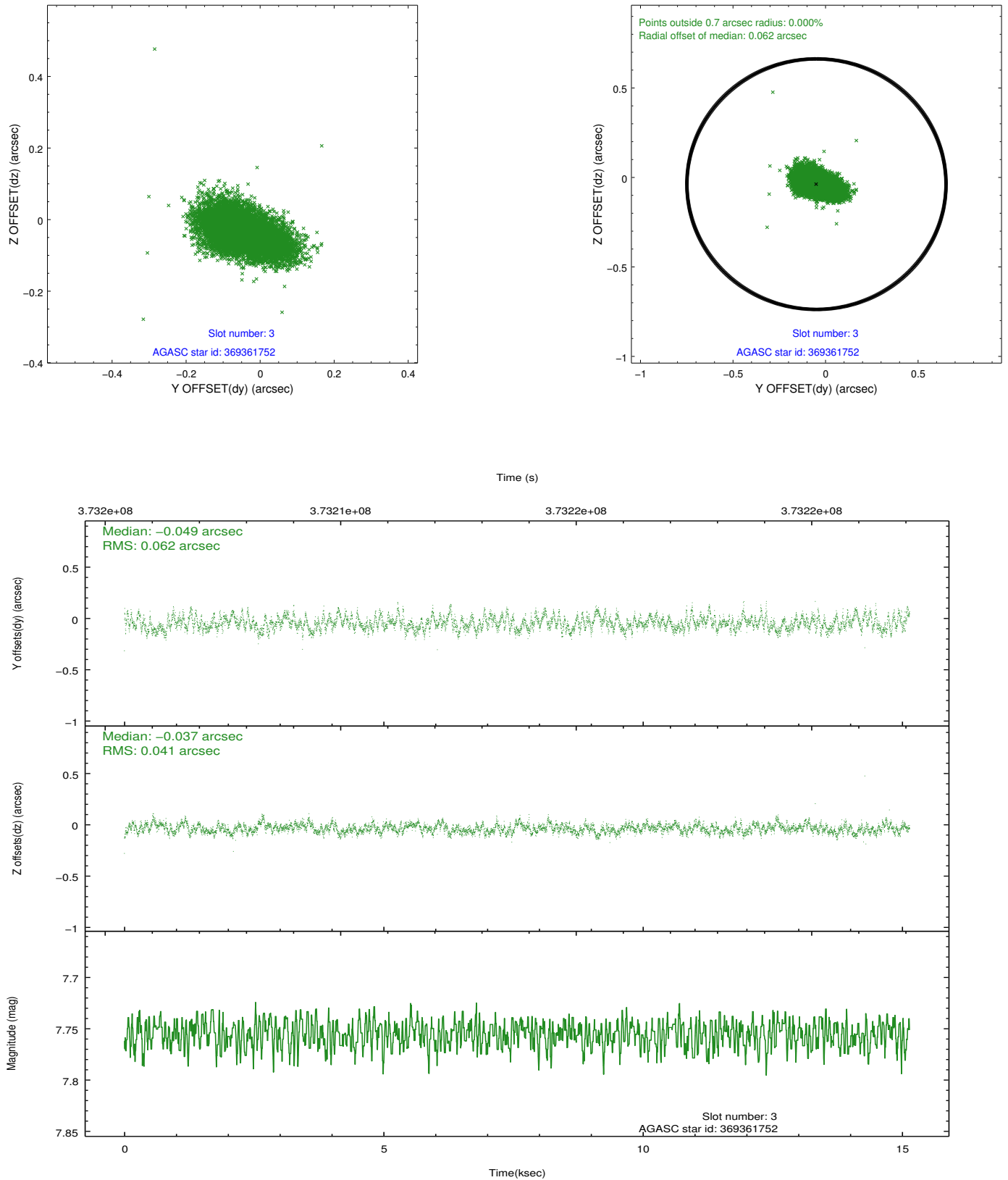


Slot Statistics

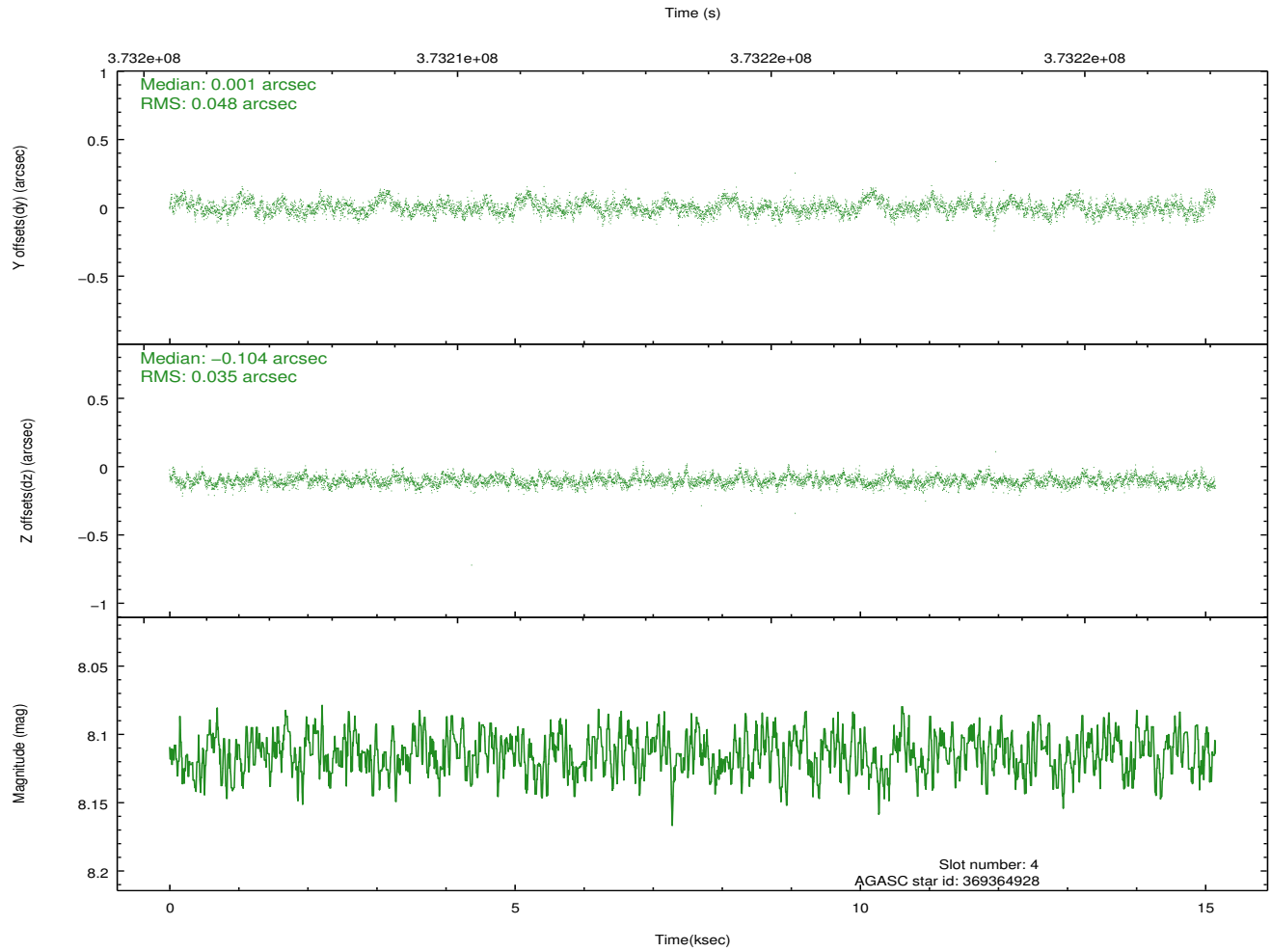
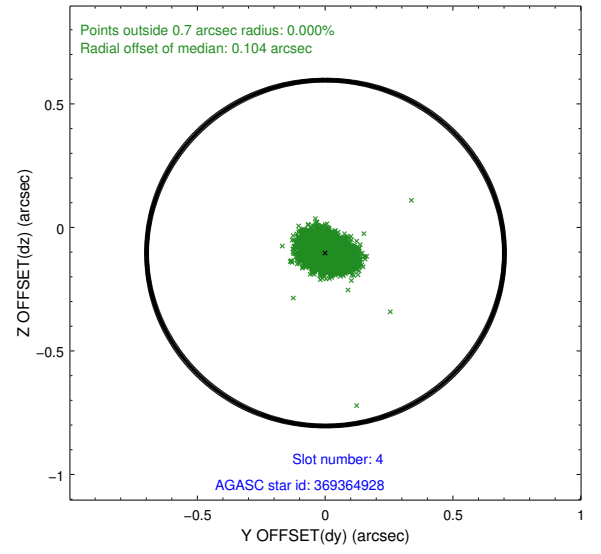
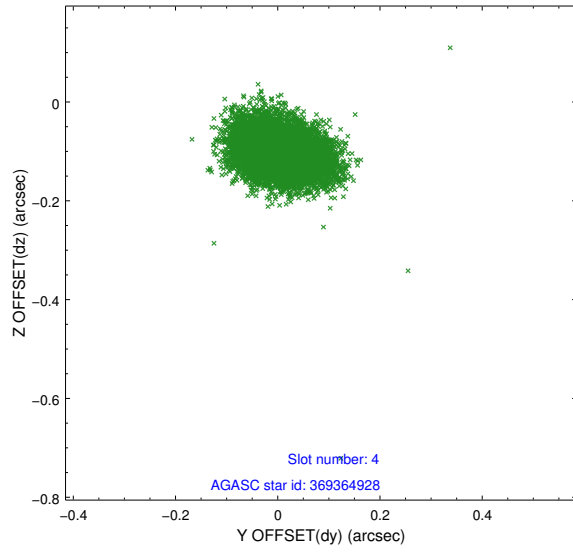
slot	status	id	mag	n_pts	med_dy	med_dz	dr1	dr2	ra	dec	mean_y	mean_z
0	FID	ACIS-S-1	7.01	3692	0.014	-0.005	0.007	0.012	0.000000	0.000000	927.22	-1731.77
1	FID	ACIS-S-4	7.02	3693	0.128	0.002	0.007	0.011	0.000000	0.000000	2144.88	172.10
2	FID	ACIS-S-5	7.05	3694	-0.169	0.016	0.006	0.010	0.000000	0.000000	-1821.47	166.00
3	GUIDE	369361752	7.75	7387	-0.049	-0.037	0.077	0.133	24.775291	41.161068	-1113.23	1385.18
4	GUIDE	369364928	8.11	7385	0.001	-0.104	0.063	0.103	24.519574	41.179125	-479.38	1097.33
5	GUIDE	369365104	8.44	7377	0.007	-0.143	0.077	0.119	24.990275	41.245167	-1762.18	1287.54
6	GUIDE	369897952	8.86	7385	0.140	0.037	0.095	0.149	24.173292	41.947134	-511.84	-1820.42
7	GUIDE	369890208	9.31	7384	-0.100	0.251	0.106	0.169	24.476240	42.183636	-1557.84	-2356.28

2.4 Star Slots

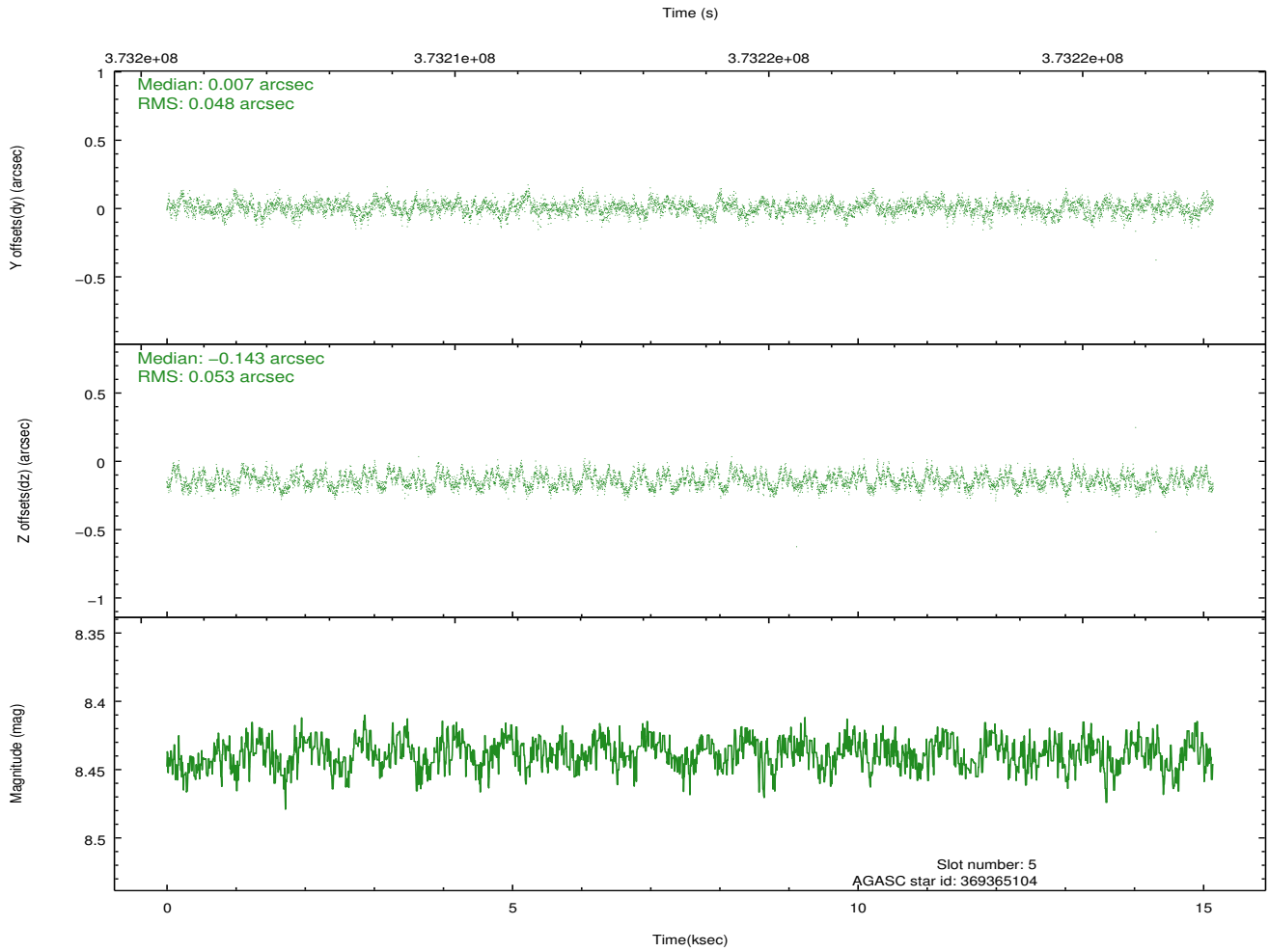
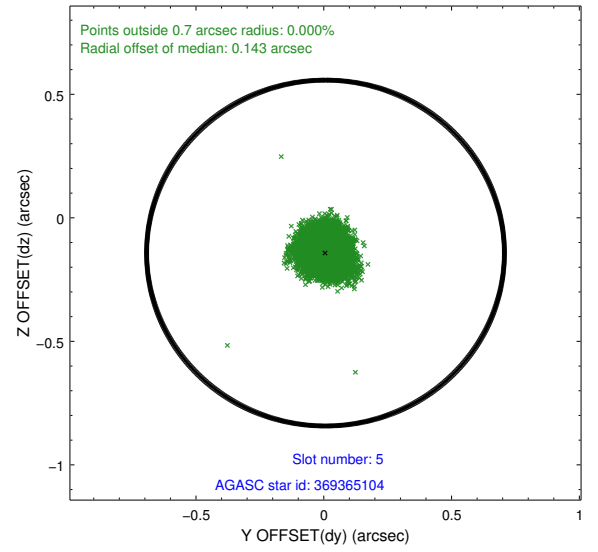
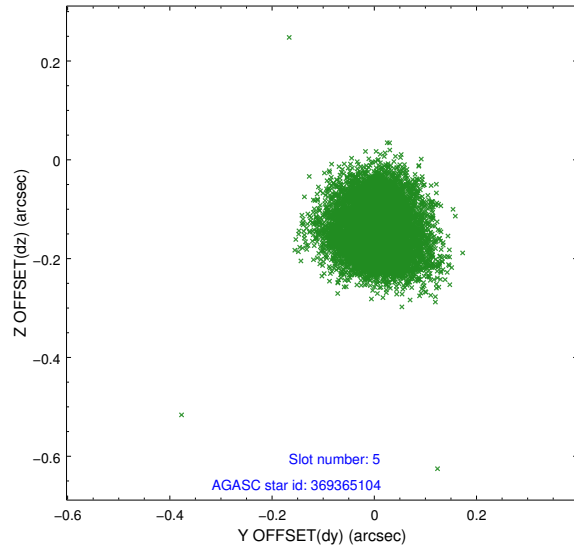
2.4.1 Slot 3



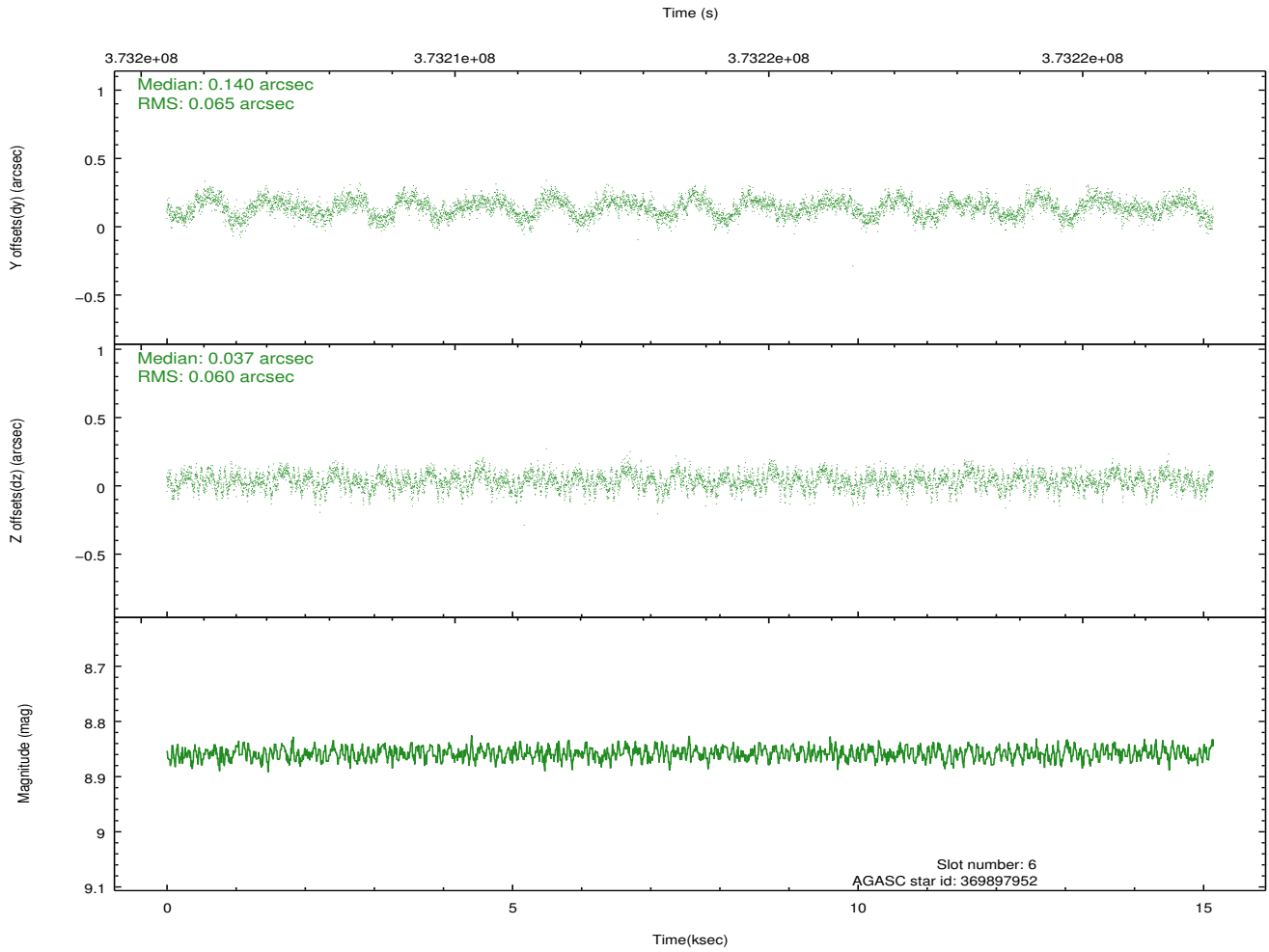
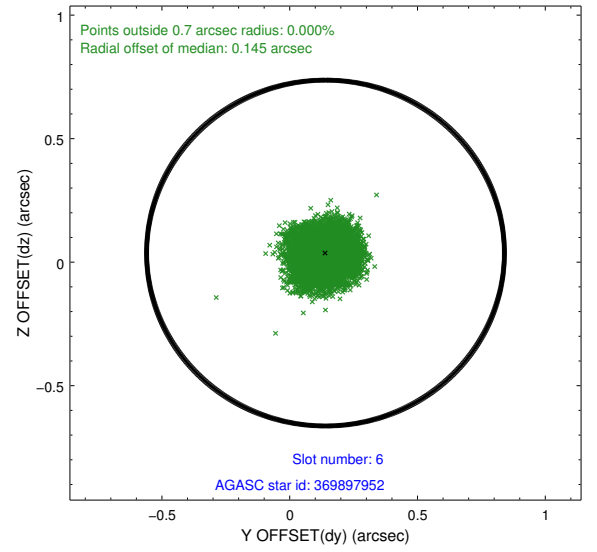
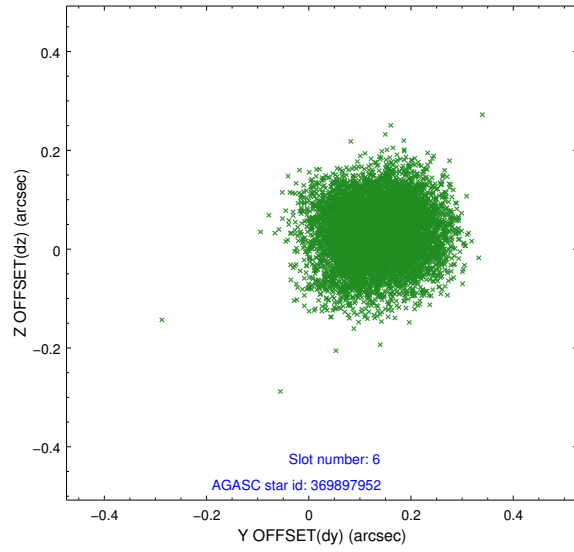
2.4.2 Slot 4



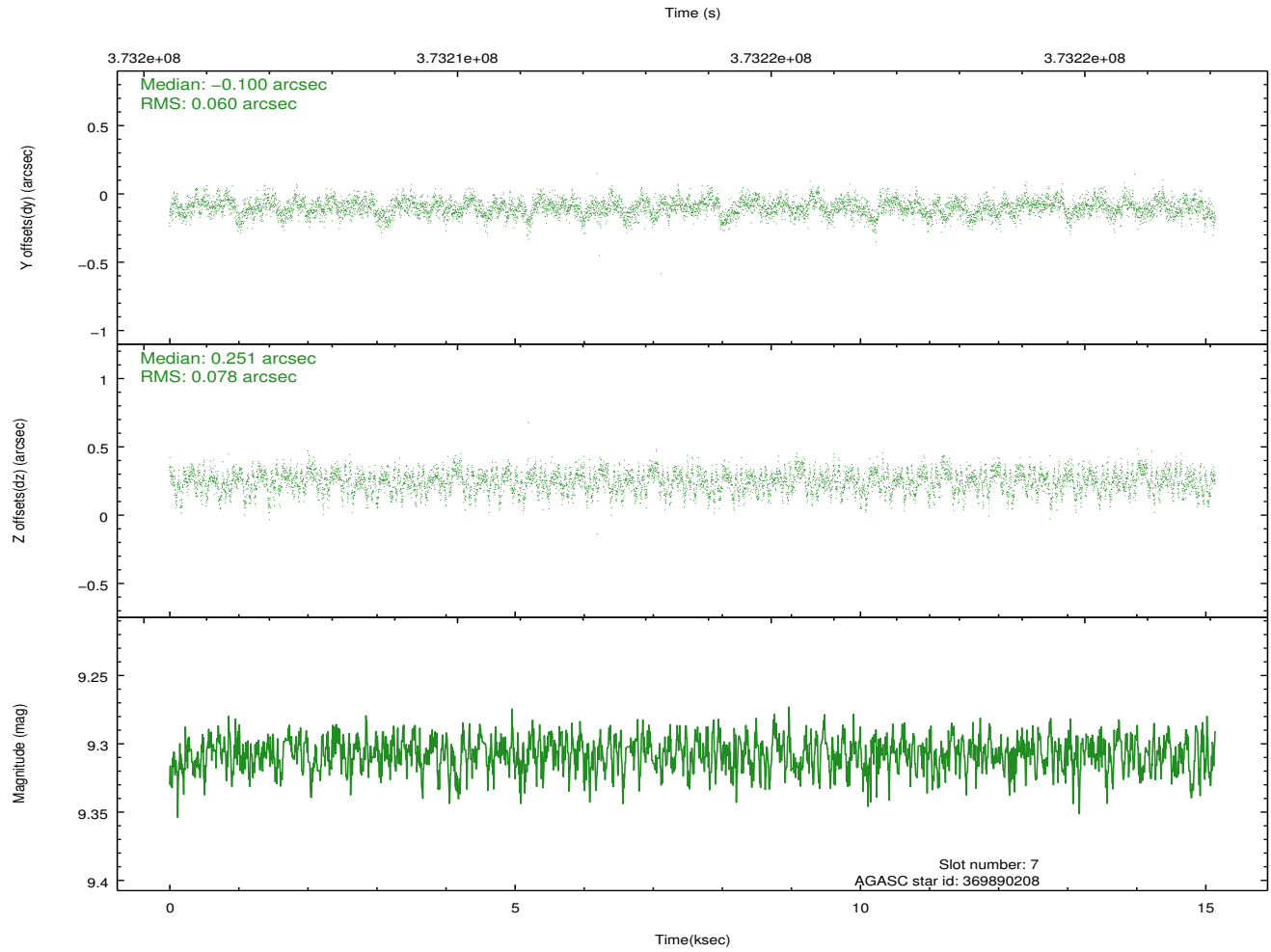
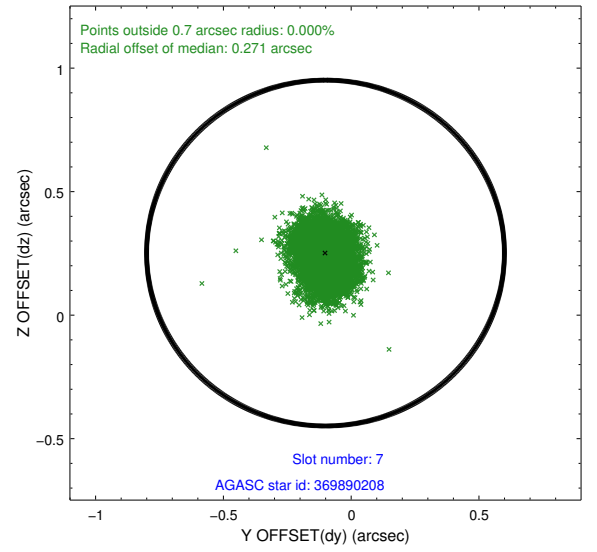
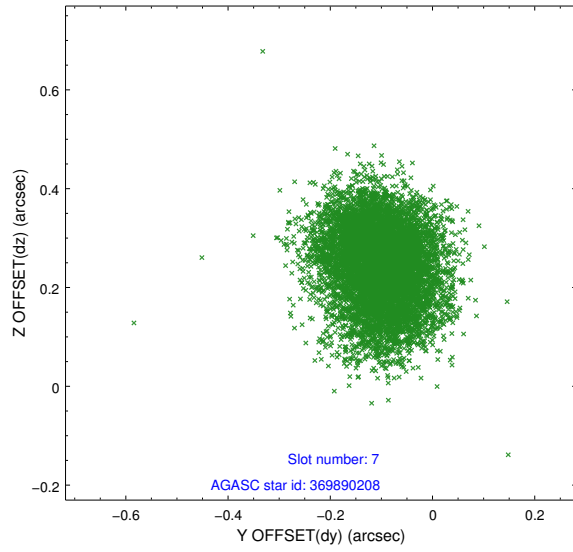
2.4.3 Slot 5



2.4.4 Slot 6

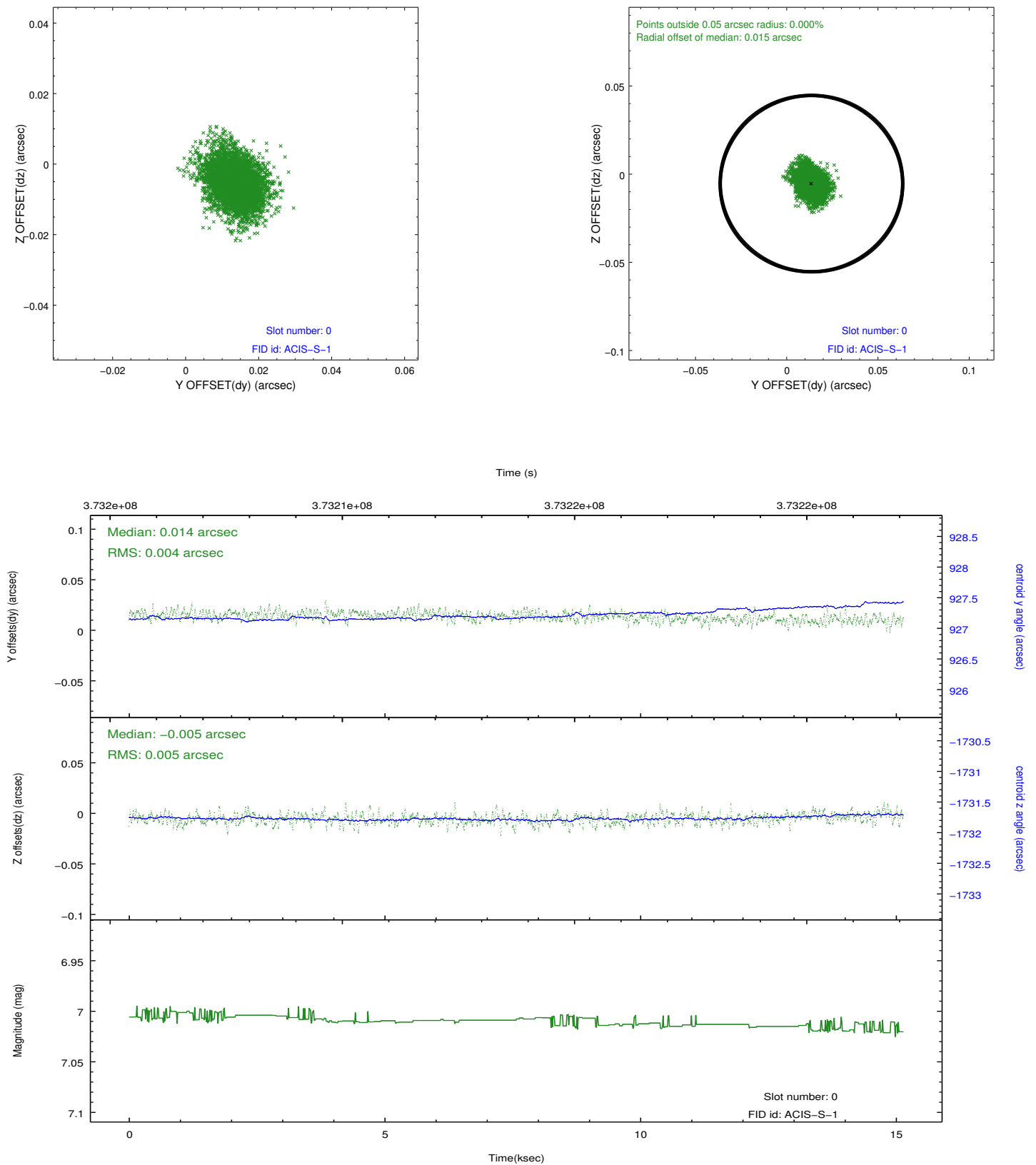


2.4.5 Slot 7

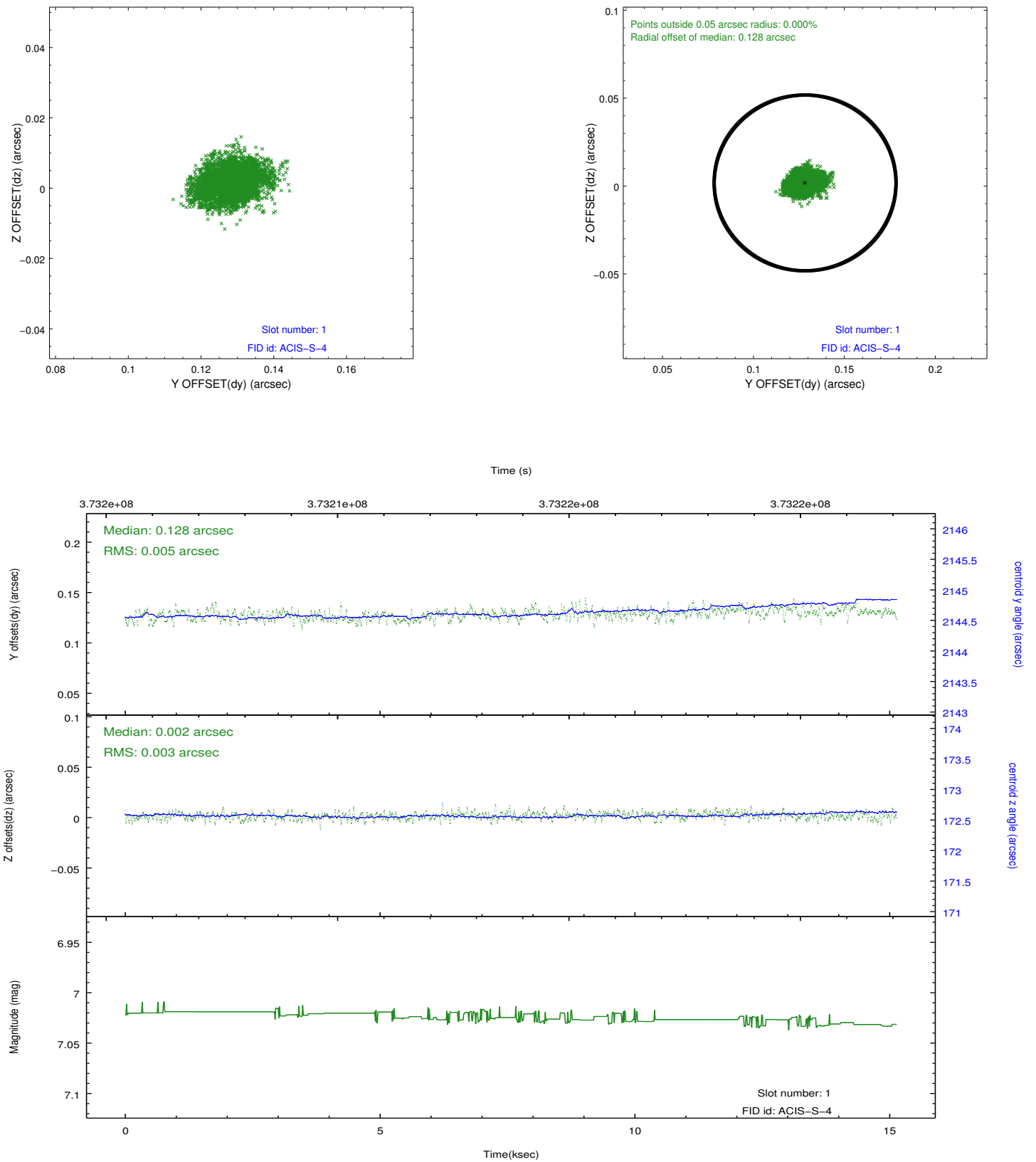


2.5 FID Slots

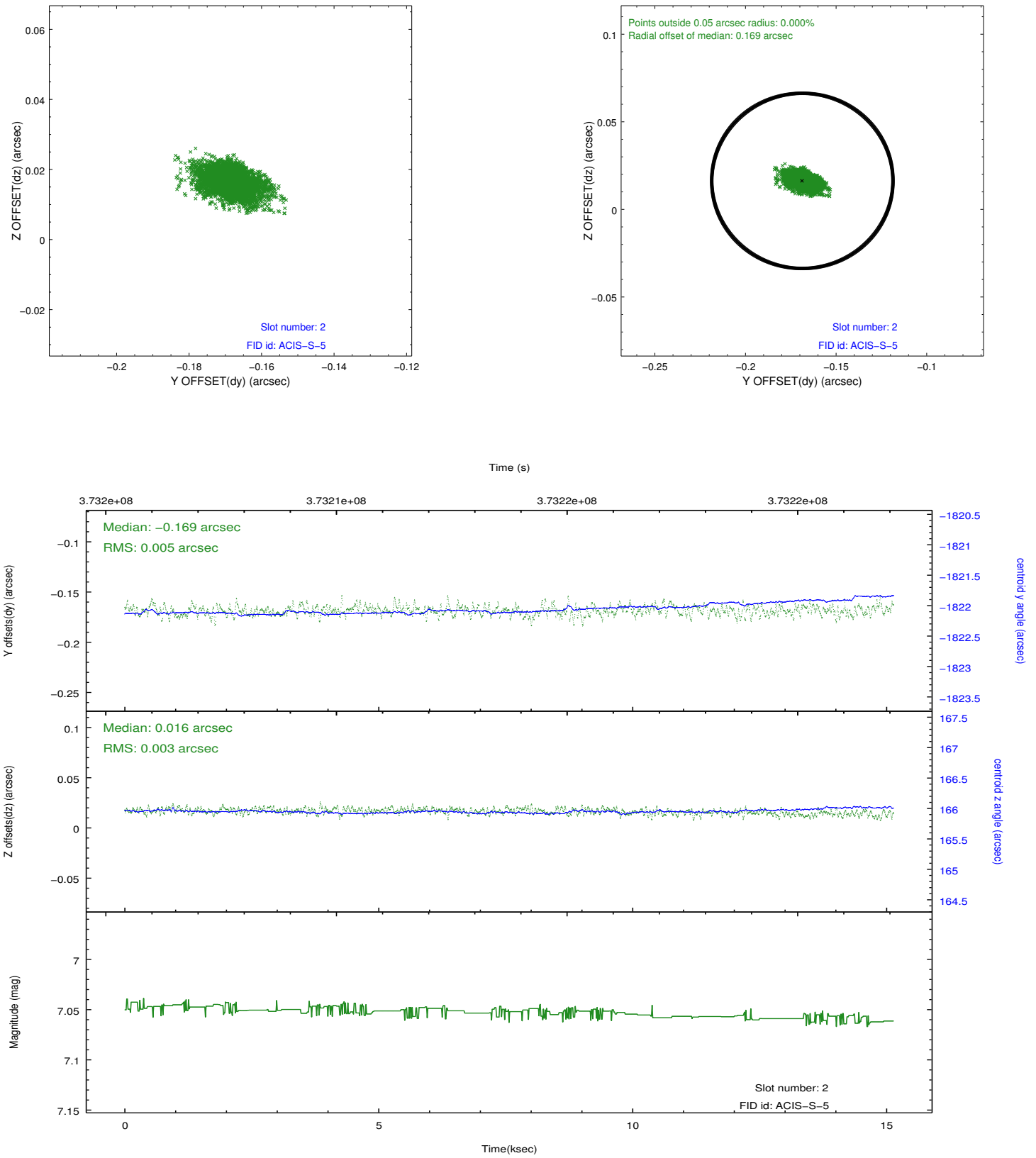
2.5.1 Slot 0



2.5.2 Slot 1



2.5.3 Slot 2



A Summary

A.1 Status

V&V Scientist	Jen Lauer
V&V Date (YYYY-MM-DD)	2012.06.20
V&V Edition	1
V&V Disposition and Status	OK
V&V Charge Time	15.140999742091

A.2 Comments

phase constraint met.