

V&V Reference Report

L2 ASCDS Version : 8.4.5

Observation 10786 - L2 Version 3
Chandra X-Ray Center

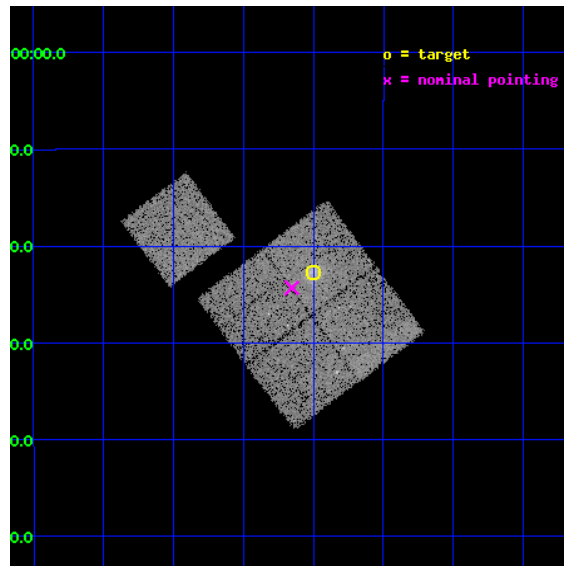
L2 Processing Date : Jun 15 2012

Contents

1	Front	2
2	OBI	3
2.1	OBI	3
2.1.1	Images	3
2.1.2	Bias	3
2.1.3	Parameters	4
2.1.4	Events	4
2.2	Compared Parameters	5
2.3	Aspect	6
2.4	Star Slots	9
2.4.1	Slot 3	9
2.4.2	Slot 4	10
2.4.3	Slot 5	11
2.4.4	Slot 6	12
2.4.5	Slot 7	13
2.5	FID Slots	14
2.5.1	Slot 0	14
2.5.2	Slot 1	15
2.5.3	Slot 2	16
A	Summary	17
A.1	Status	17
A.2	Comments	17

1 Front

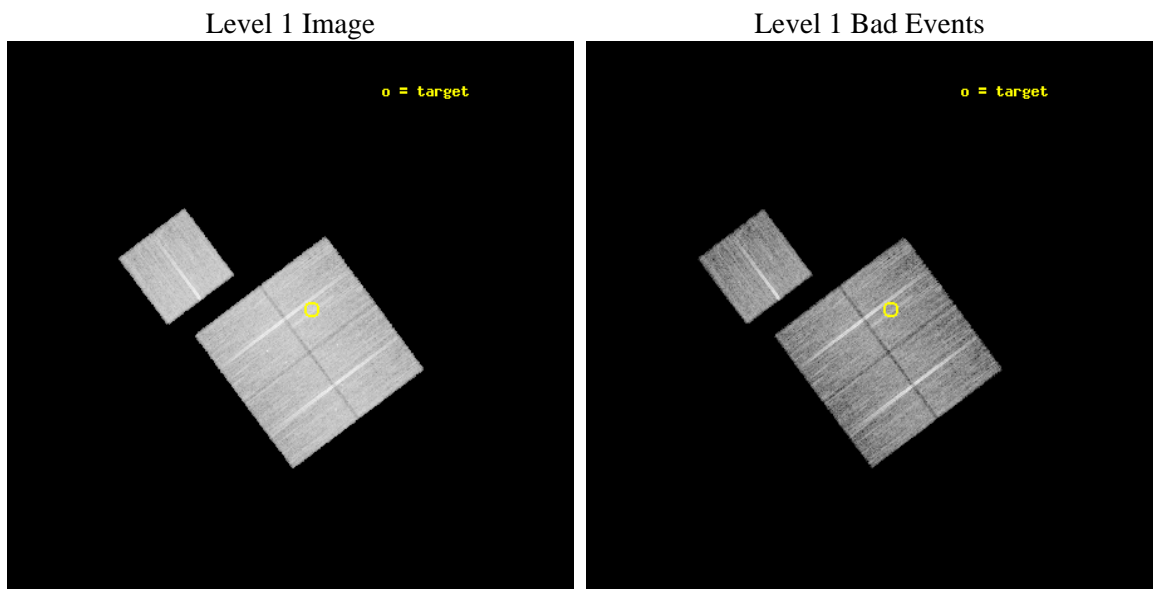
seq_num	800774	Sequence number
obs_id	10786	Observation id
title	Mapping Dark Matter in the Merging Cluster MACSJ0025.4	Proposal ti
observer	Dr Roger Morris	Principal investigator
object	MACSJ0025.4-1222	Source name
dtcycle	0	
cycle	P	events from which exps? Prim/Second/Both
ra_targ	6.374167	Observer's specified target RA [deg]
dec_targ	-12.379722	Observer's specified target Dec [deg]
ra_nom	6.4132929641525	Nominal RA [deg]
dec_nom	-12.405449745188	Nominal Dec [deg]
roll_nom	323.21708935908	Nominal Roll [deg]
revision	3	Processing version of data
ontime	14092.600108385	Sum of GTIs [s]
livetime	13908.469913148	Livetime [s]
ontime0	14086.318127811	Sum of GTIs [s]
ontime1	14086.318127811	Sum of GTIs [s]
ontime2	14089.459118128	Sum of GTIs [s]
ontime3	14092.600108385	Sum of GTIs [s]
ontime6	14092.600108385	Sum of GTIs [s]
l2events	51900	Number of level 2 events



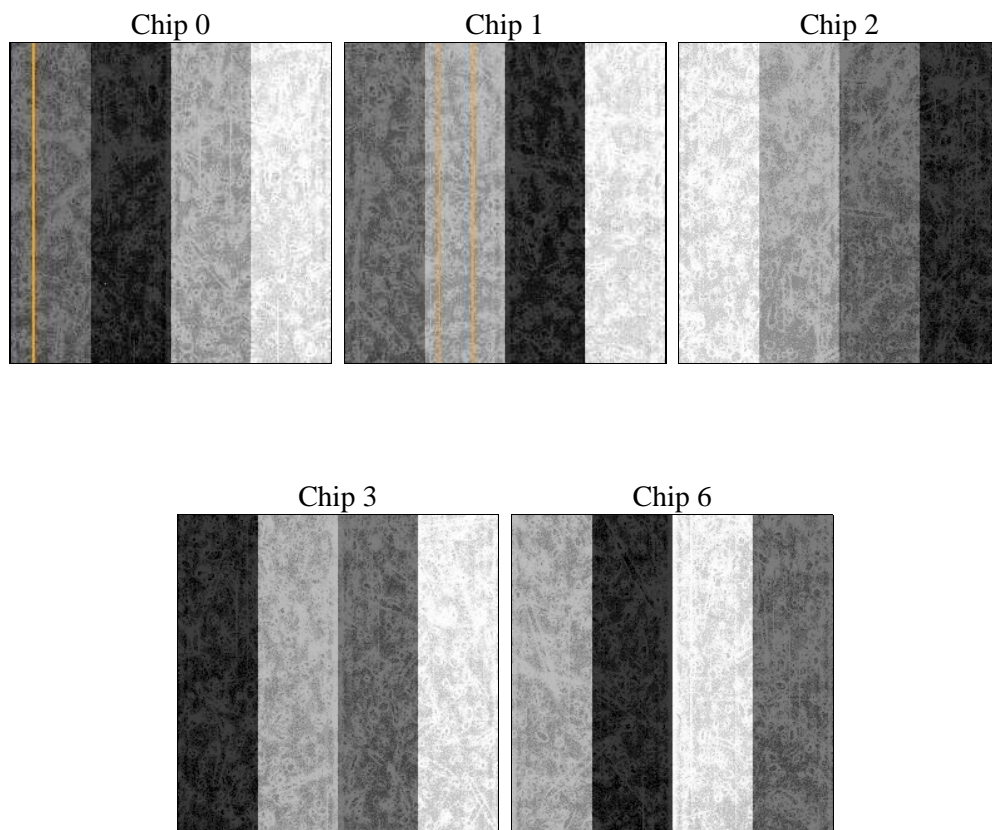
2 OBI

2.1 OBI

2.1.1 Images



2.1.2 Bias



2.1.3 Parameters

obi_num	0	Obi number	sched_exp_time	35000.000000	[s] Scheduled observation exposure time
ascdsver	8.4.5	Processing system revision	ontime	14092.600108385	Sum of GTIs [s]
caldbver	4.4.10	 	ontime0	14086.318127811	Sum of GTIs [s]
date	2012-06-15T19:32:43	Date and time of file creation	ontime1	14086.318127811	Sum of GTIs [s]
revision	3	Processing version of data	ontime2	14089.459118128	Sum of GTIs [s]
			ontime3	14092.600108385	Sum of GTIs [s]
			ontime6	14092.600108385	Sum of GTIs [s]
			l1events	584407	Number of level 1 events

2.1.4 Events

	ccd 0	ccd 1	ccd 2	ccd 3	ccd 6
level 1 events	110447	111425	122602	121229	118704
rejected events	98624	98032	110572	108283	106771
rejected %	89%	87%	90%	89%	89%

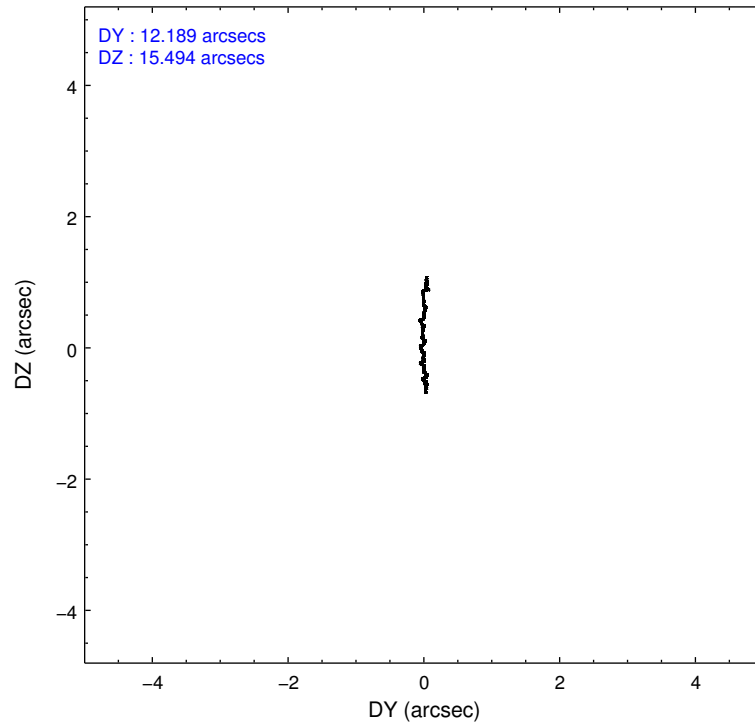
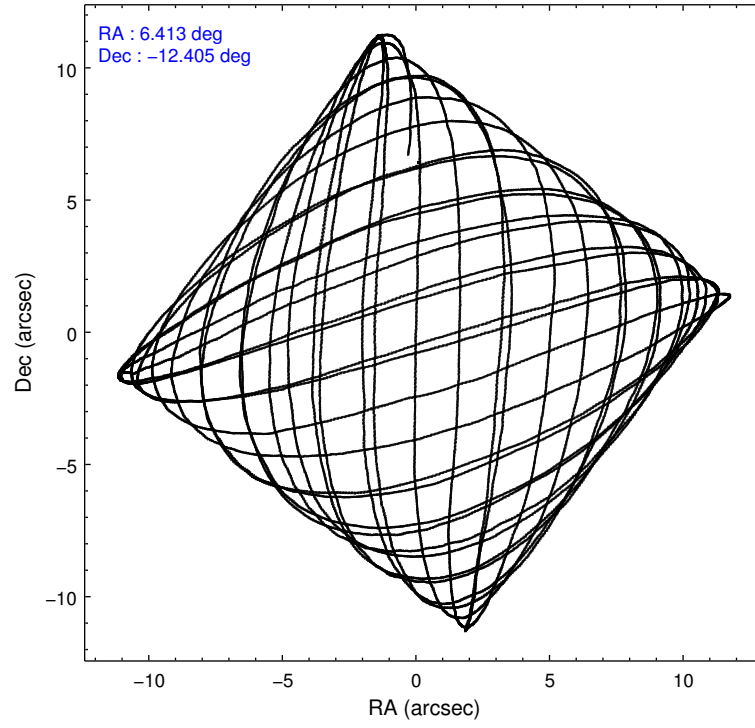
	ccd 0	ccd 1	ccd 2	ccd 3	ccd 6
grade 0 events	4122	4899	4404	5271	4162
	3%	4%	3%	4%	3%
grade 1 events	61	69	62	69	52
	0%	0%	0%	0%	0%
grade 2 events	2903	3083	2891	2643	2640
	2%	2%	2%	2%	2%
grade 3 events	1305	1442	1293	1340	1279
	1%	1%	1%	1%	1%
grade 4 events	1212	1336	1298	1320	1283
	1%	1%	1%	1%	1%
grade 5 events	4189	4638	3924	4977	4747
	3%	4%	3%	4%	3%
grade 6 events	2311	2669	2171	2404	2598
	2%	2%	1%	1%	2%
grade 7 events	94344	93289	106559	103205	101943
	85%	83%	86%	85%	85%

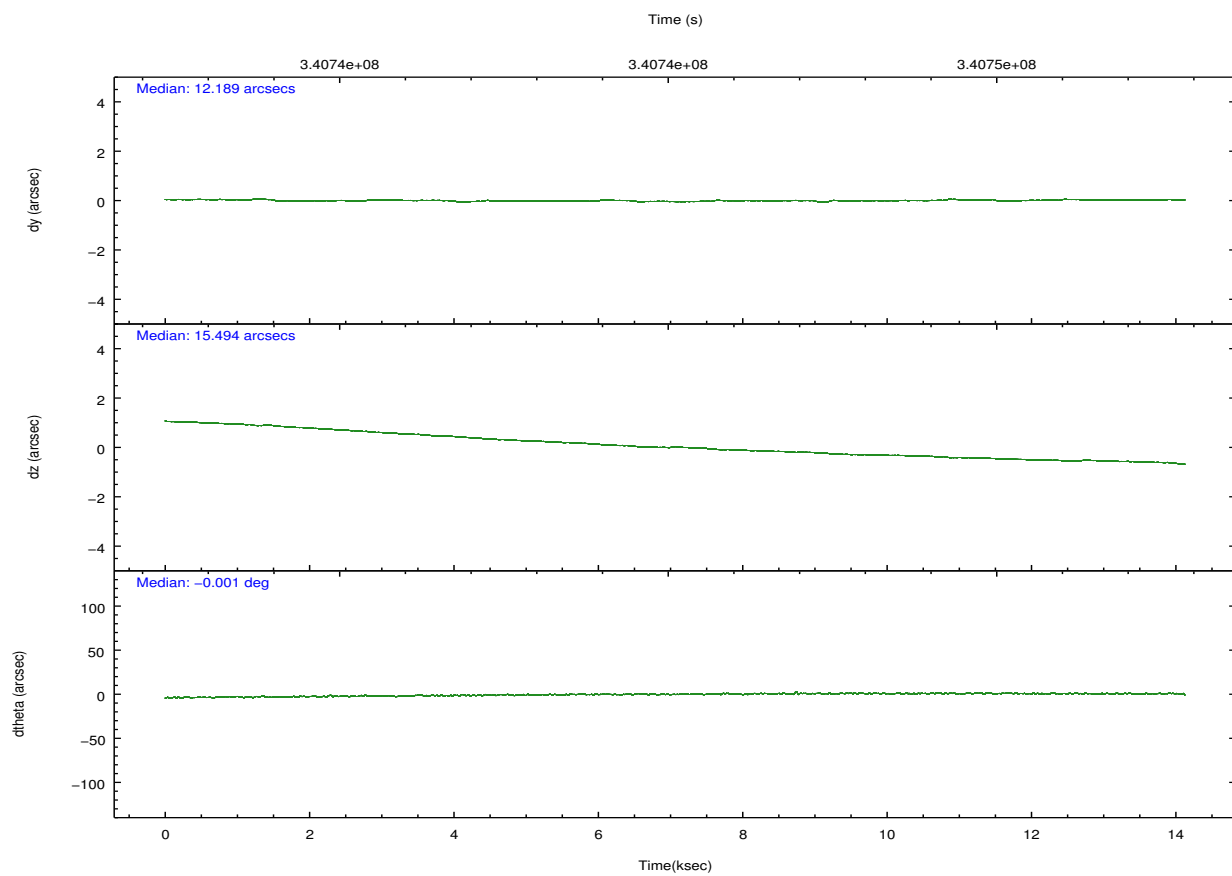
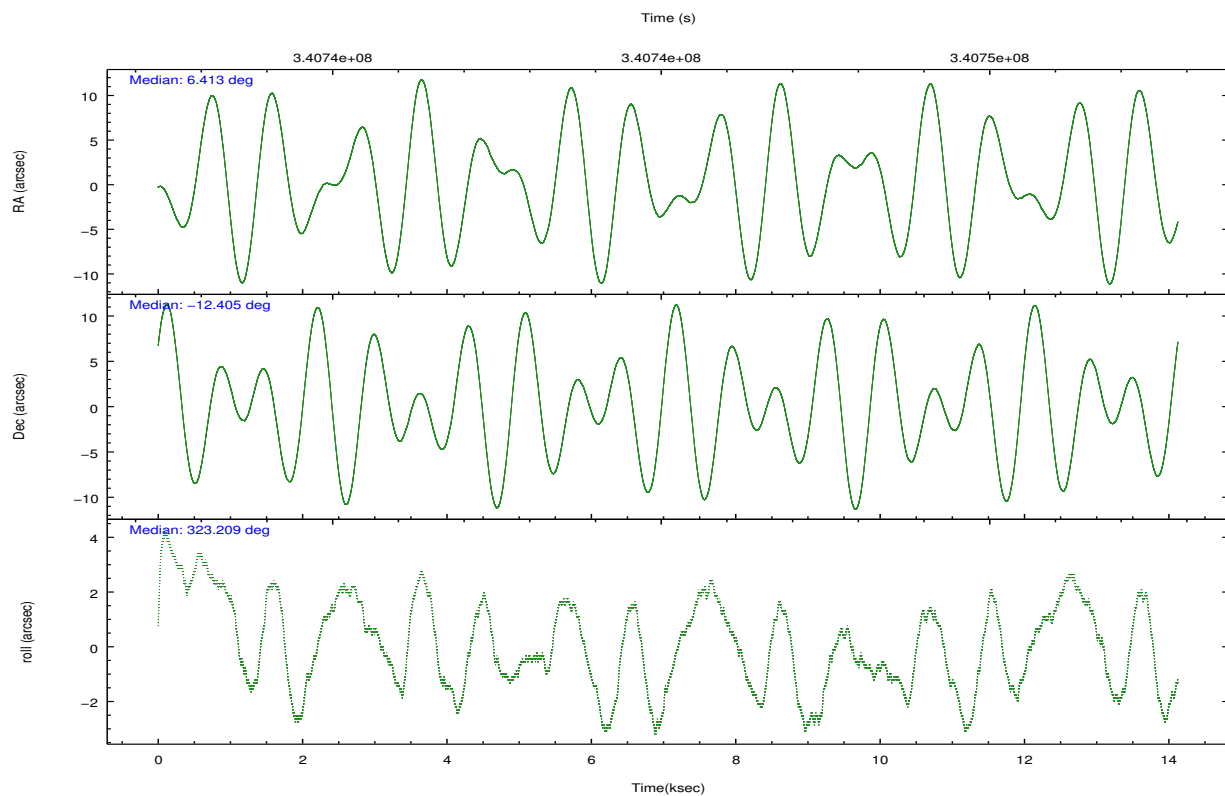
2.2 Compared Parameters

Parameter	Planned	Actual
Instrument	ACIS	ACIS
Detector	ACIS-01236	ACIS-01236
Grating	NONE	NONE
Data mode	VFAINT	VFAINT
Observation mode	POINTING	POINTING
[deg] Pointing RA	6.385341	6.413292964152489
[deg] Pointing Dec	-12.402351	-12.405449745188
[deg] Pointing Roll	323.002388	323.2170893590803
[mm] SIM focus pos	-0.7809083437167272	-0.7809083437167272
[mm] SIM defocus	0.001439854621705816	0.001439854621705816
[mm] SIM translation stage pos	-225.5215109734242	-225.5215109734242
[mm] SIM translation stage offset	-8.070952118007597	-8.070952118007597
[s] Observation start time (MET)	340738046.184000	340738046.184
Observation start date	2008-10-18T17:26:21	2008-10-18T17:27:26
[s] Observation end time (MET)	340752174.17	340752174.17
Observation end date	2008-10-18T21:22:54	2008-10-18T21:22:54
Read mode	TIMED	TIMED

Parameter	Planned	Actual
Obspar format version number	7	7
Obspar file type	PREDICTED	ACTUAL
Obspar update status	OVERRIDE	OVERRIDE
Number of optional ACIS chips dropped	0	0
On-chip summing requested	N	N
Subarray requested	NONE	NONE
Alternating exposures requested	N	N
[s] Primary exposure time	3.1	3.1

2.3 Aspect



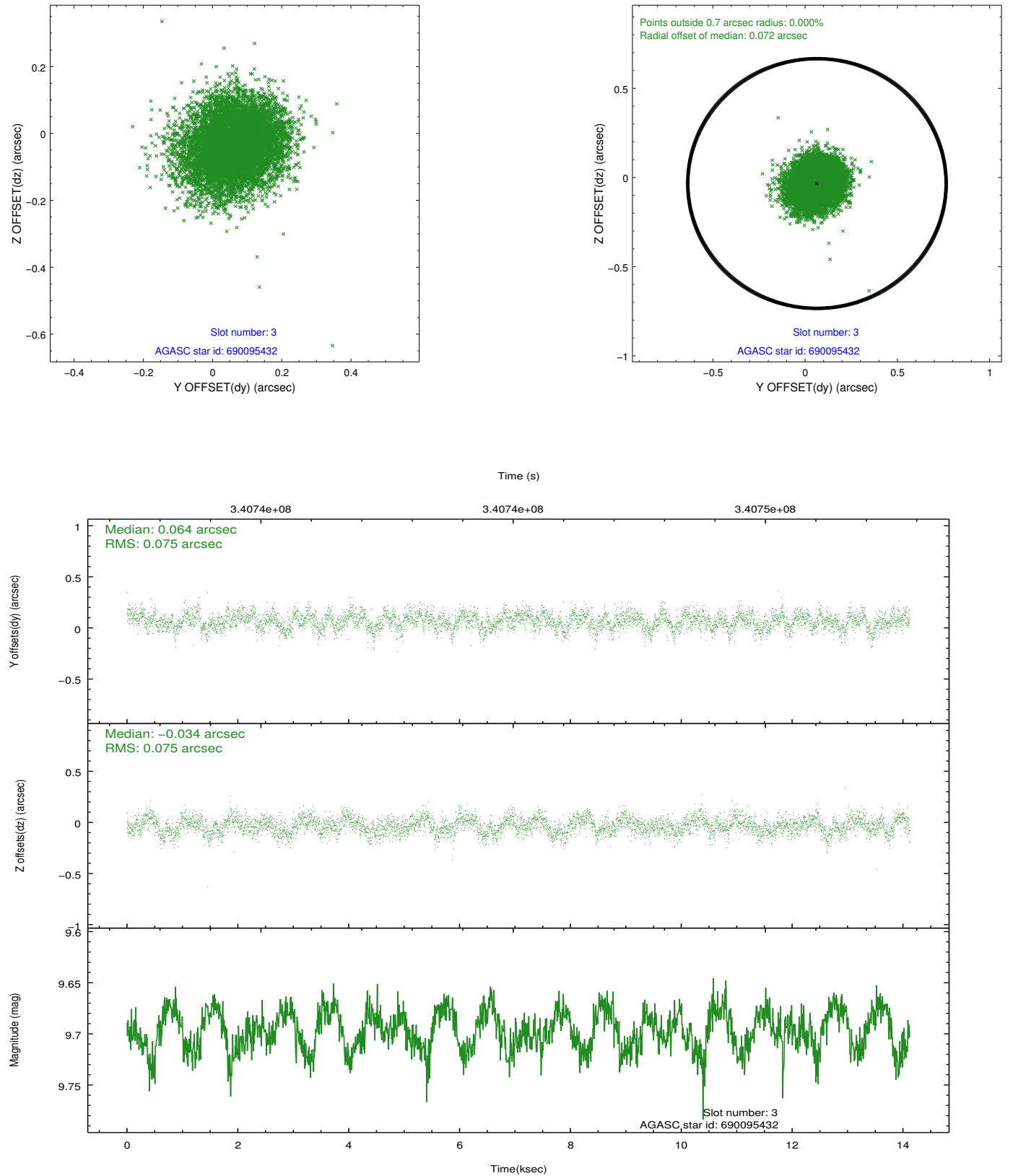


Slot Statistics

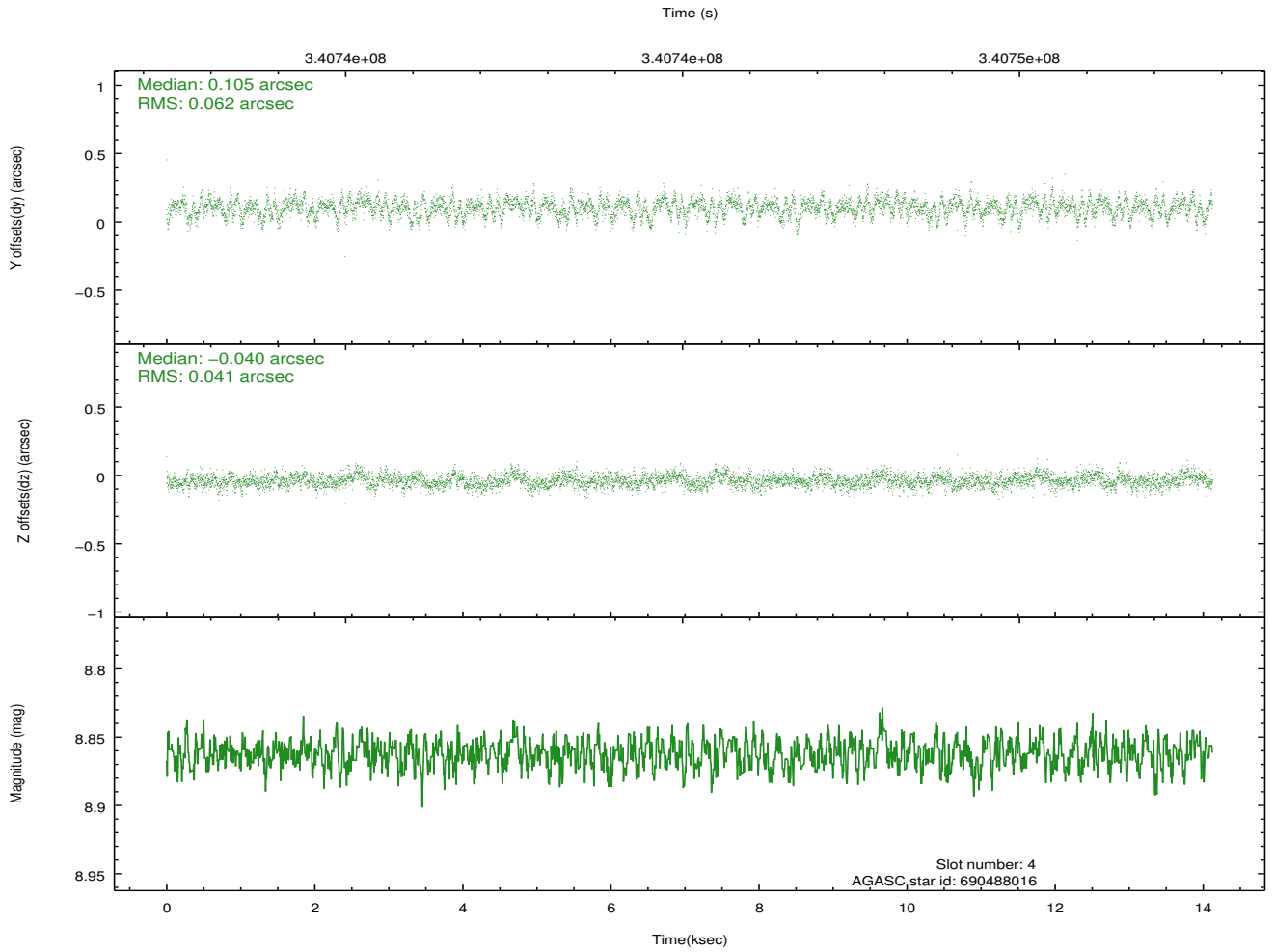
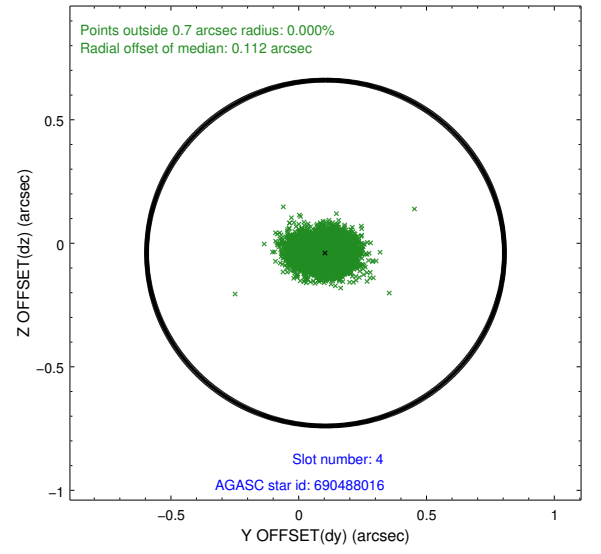
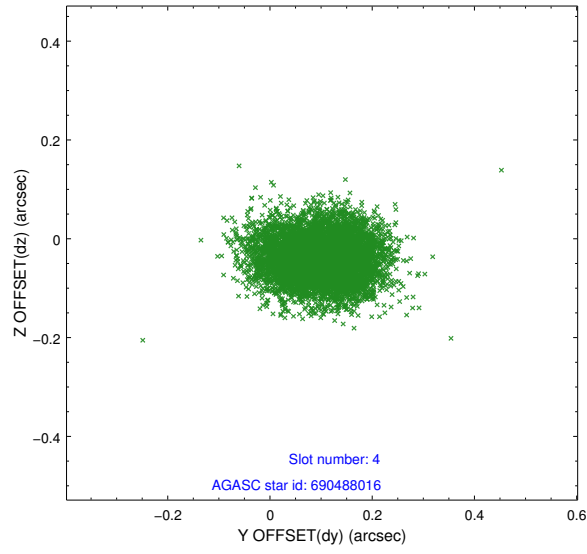
slot	status	id	mag	n_pts	med_dy	med_dz	dr1	dr2	ra	dec	mean_y	mean_z
0	FID	ACIS-I-1	6.99	3445	0.137	-0.110	0.017	0.038	0.000000	0.000000	927.32	-1005.00
1	FID	ACIS-I-5	7.00	3445	-0.214	0.130	0.010	0.022	0.000000	0.000000	-1820.94	892.53
2	FID	ACIS-I-6	7.01	3445	-0.012	0.050	0.012	0.020	0.000000	0.000000	392.38	1537.32
3	GUIDE	690095432	9.70	6884	0.064	-0.034	0.113	0.180	6.686559	-12.321914	672.55	868.48
4	GUIDE	690488016	8.86	6886	0.105	-0.040	0.078	0.129	6.525563	-13.077965	1857.44	-1646.82
5	GUIDE	690493920	9.54	6884	0.208	-0.109	0.110	0.186	6.480998	-13.255234	2116.81	-2250.55
6	GUIDE	690100136	6.47	6889	-0.284	0.107	0.060	0.106	5.715784	-12.209438	-2294.74	-863.37
7	GUIDE	690096648	9.87	6879	-0.090	0.081	0.157	0.245	6.890979	-12.026292	608.23	2151.53

2.4 Star Slots

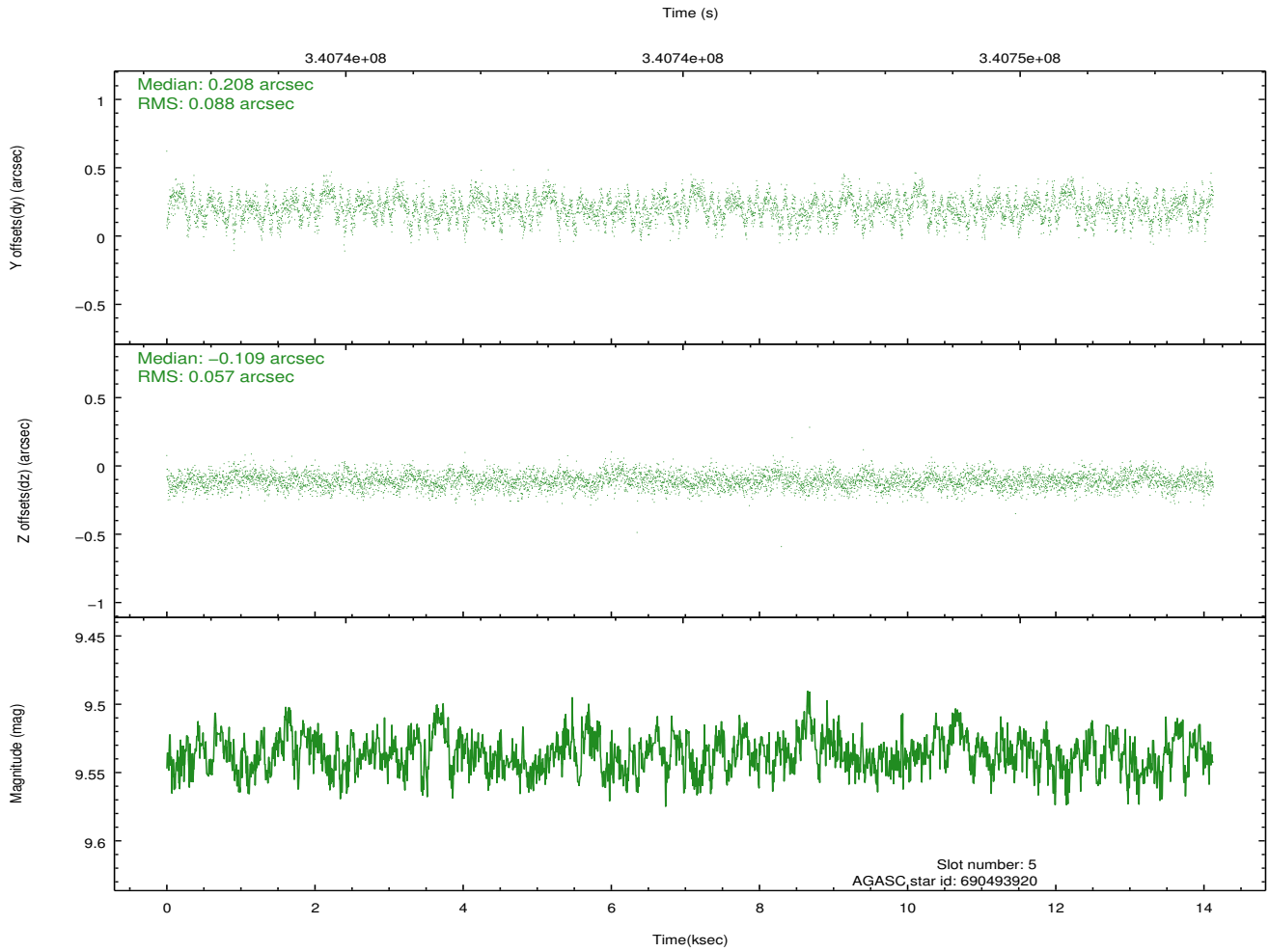
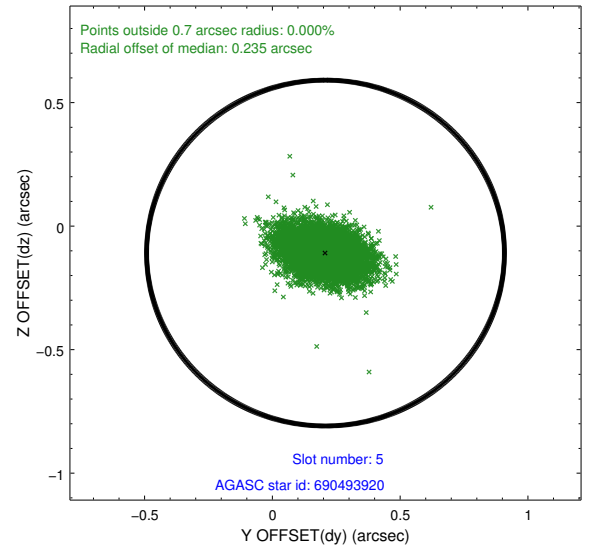
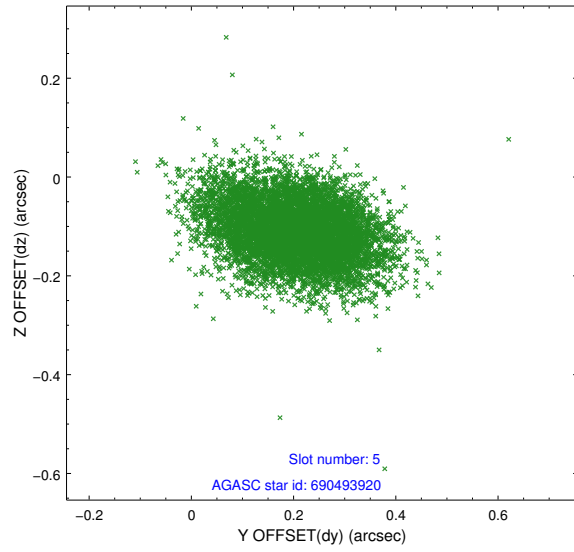
2.4.1 Slot 3



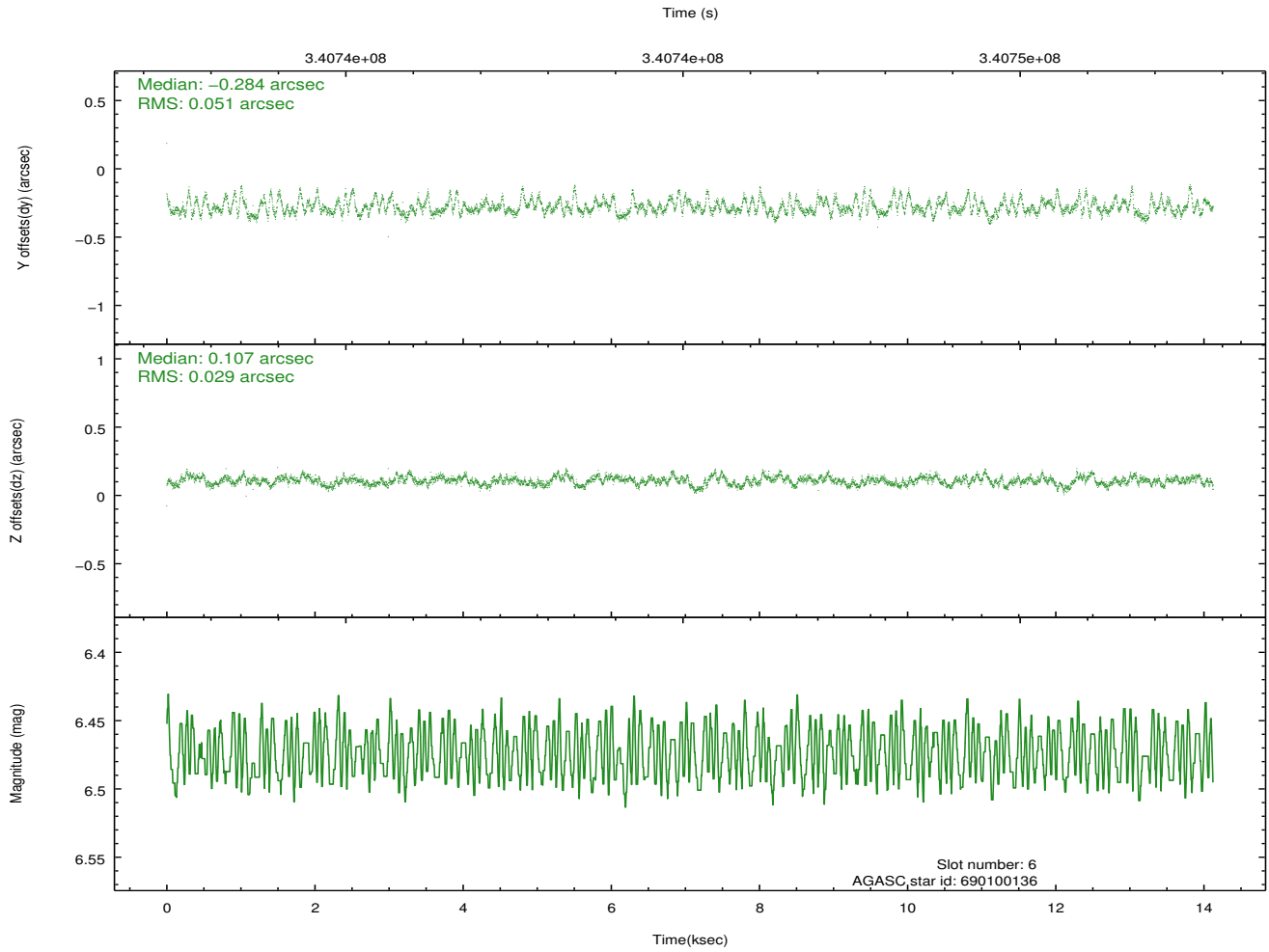
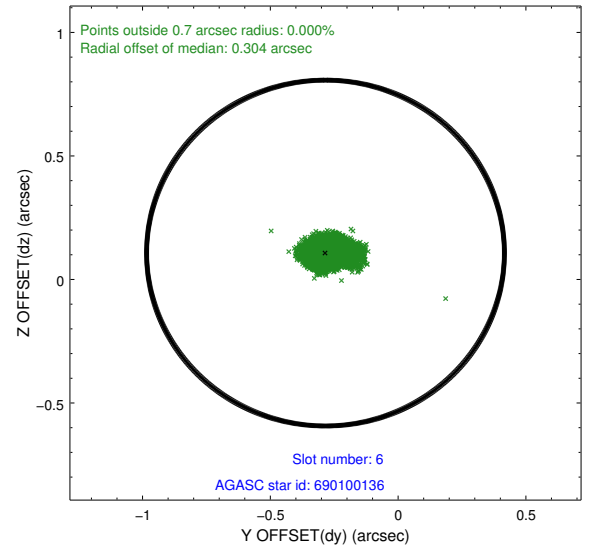
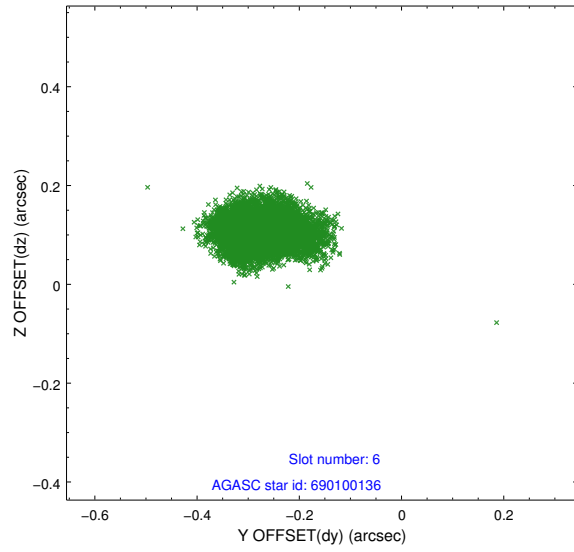
2.4.2 Slot 4



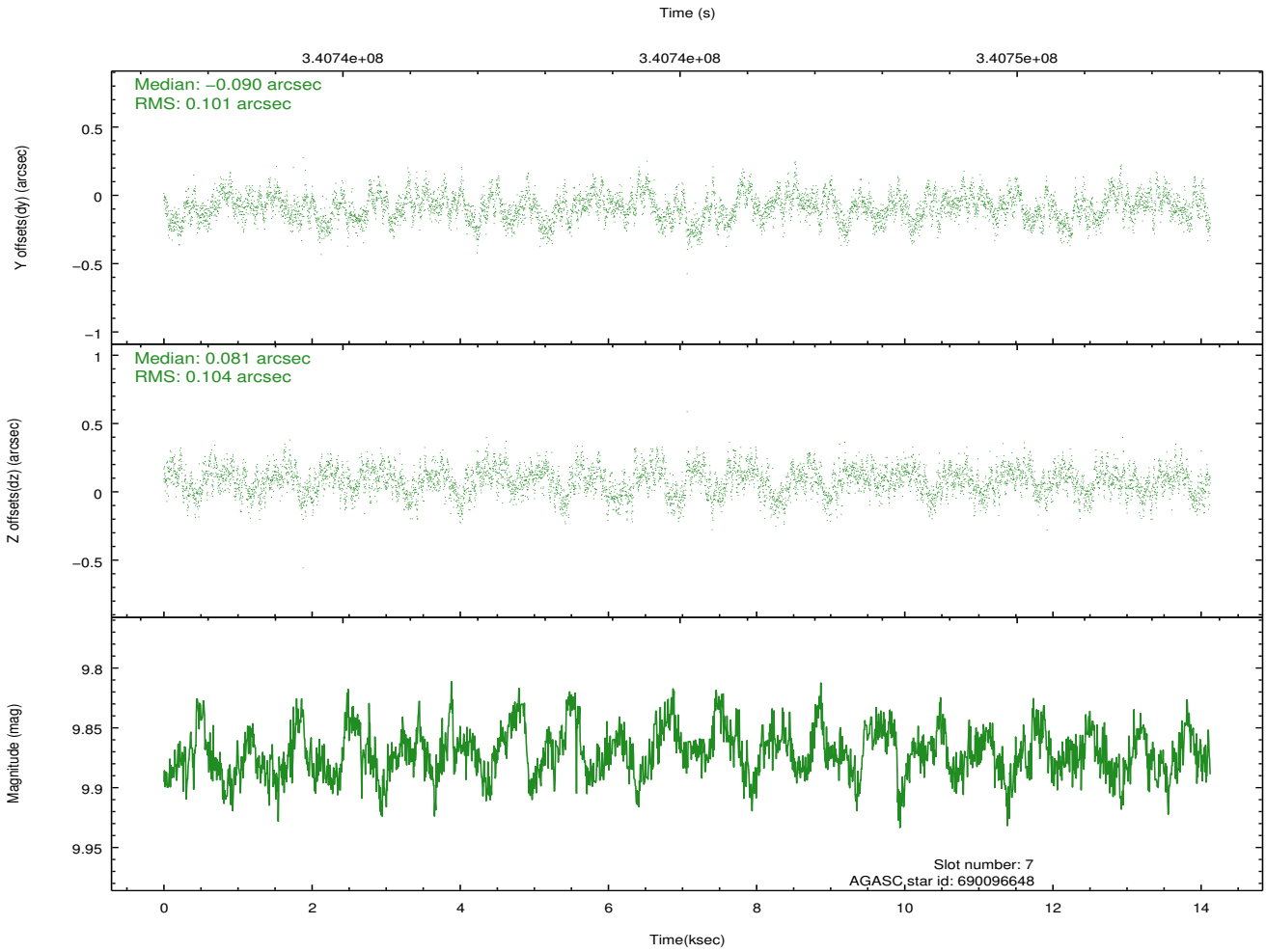
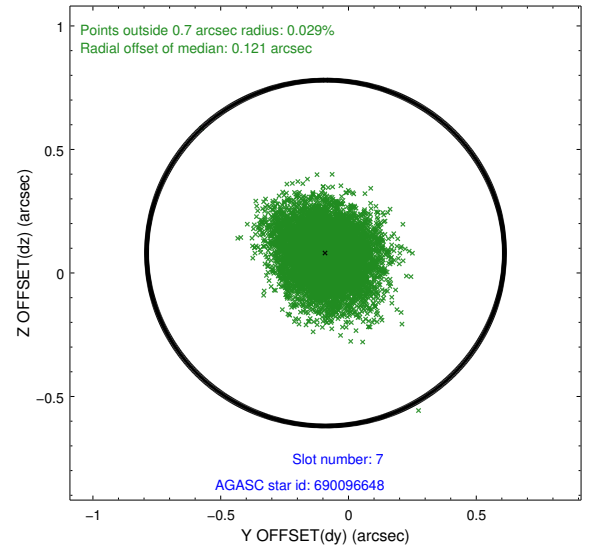
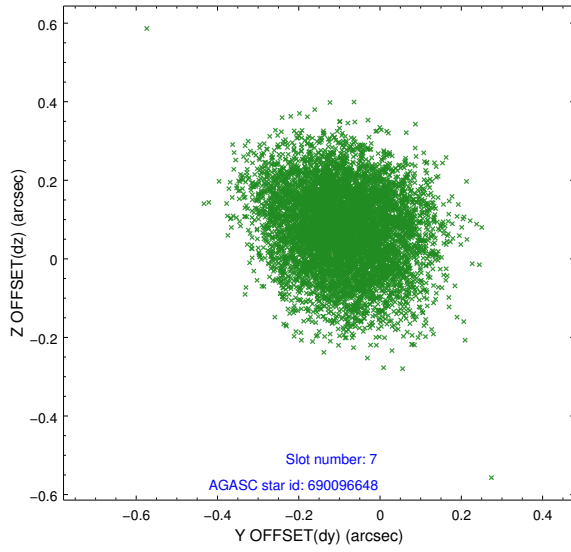
2.4.3 Slot 5



2.4.4 Slot 6

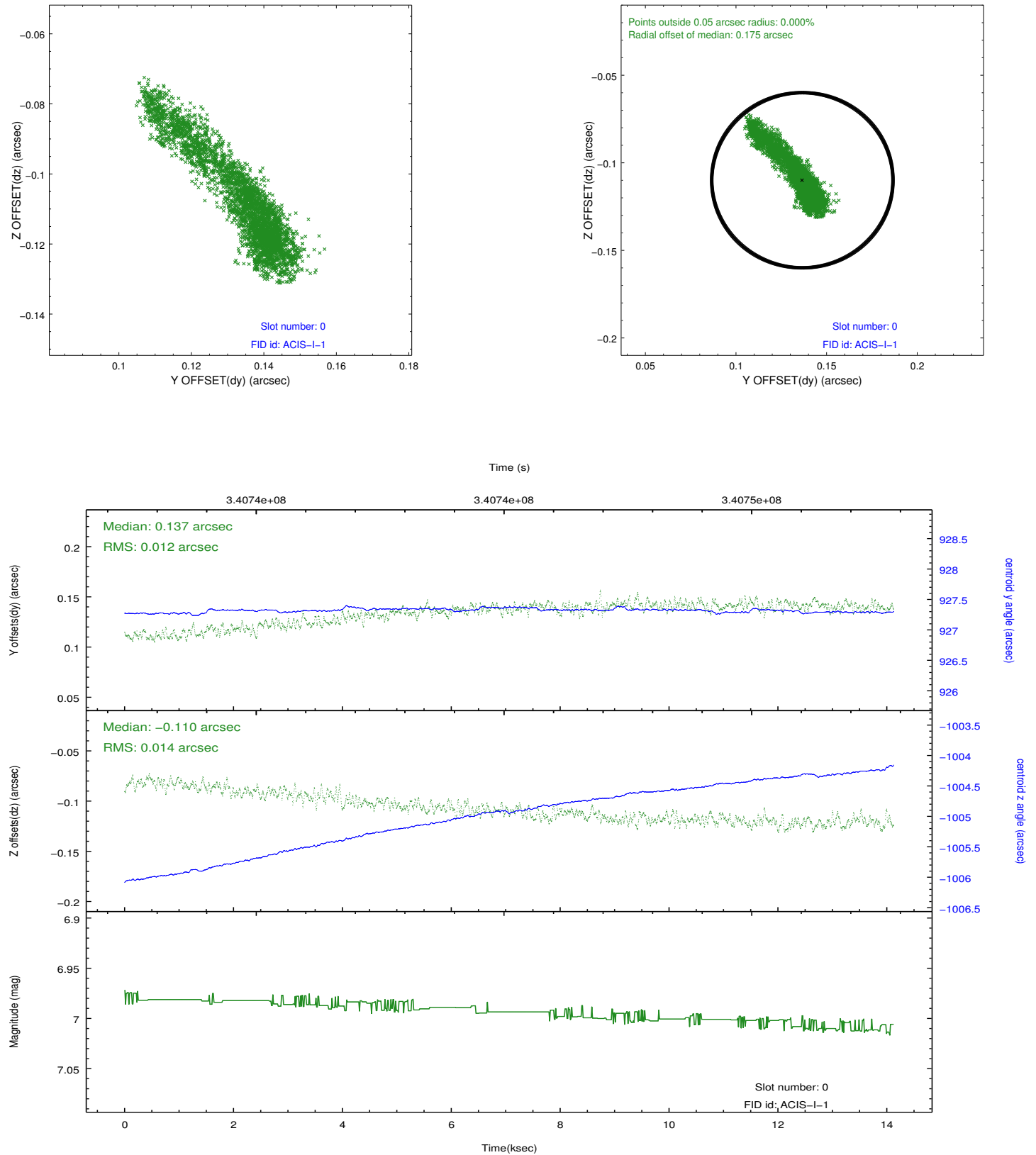


2.4.5 Slot 7

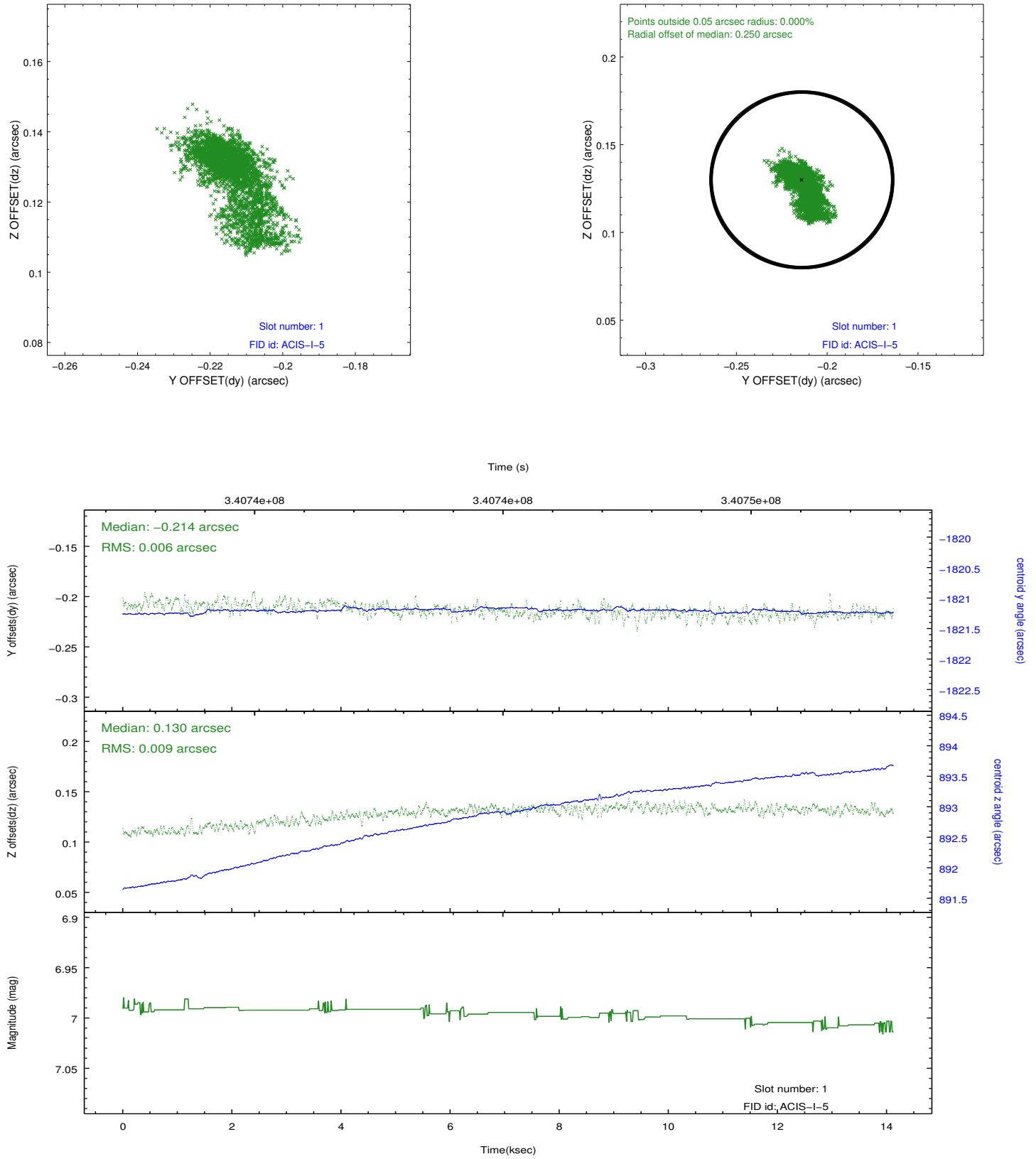


2.5 FID Slots

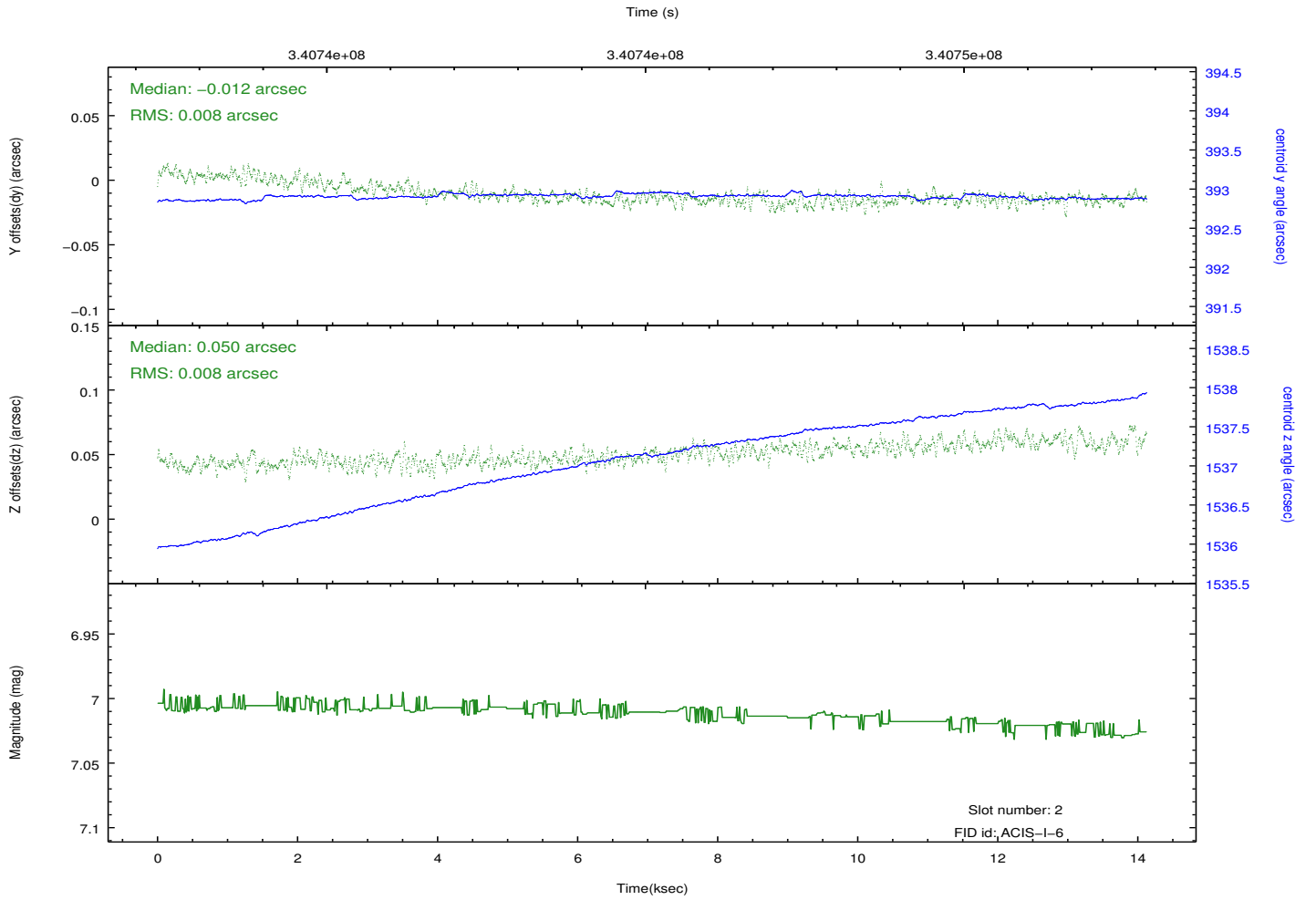
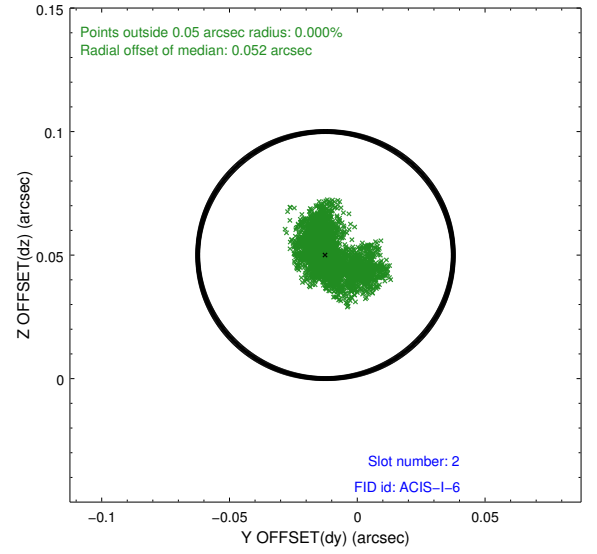
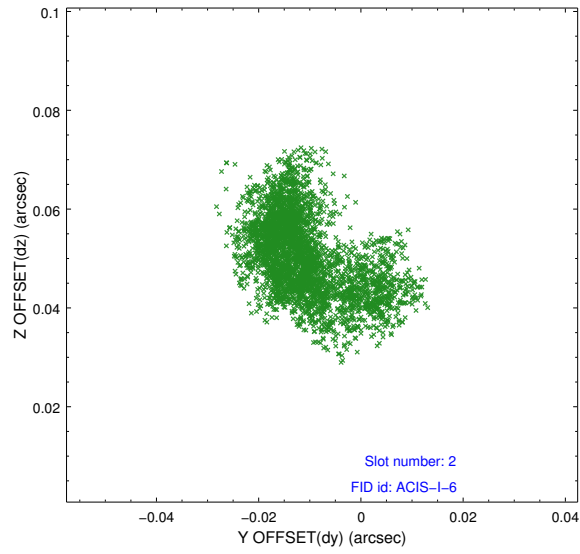
2.5.1 Slot 0



2.5.2 Slot 1



2.5.3 Slot 2



A Summary

A.1 Status

V&V Scientist	Jen Lauer
V&V Date (YYYY-MM-DD)	2012.06.20
V&V Edition	1
V&V Disposition and Status	OK
V&V Charge Time	14.3096001

A.2 Comments

Charge time for this ObsId remains at previous value of 14.3096001 ks although with the current processing the charge time would have been 14.0926 ksec.

=====

This observation was terminated by a spacecraft anomaly on Oct. 18, 2008 at 21:24 UTC. The data for this observation are good and were unaffected by the anomaly. The remainder of this observation was completed under another obsid number.