

V&V Reference Report

L2 ASCDS Version : 8.4.4

Observation 10420 - L2 Version 2
Chandra X-Ray Center

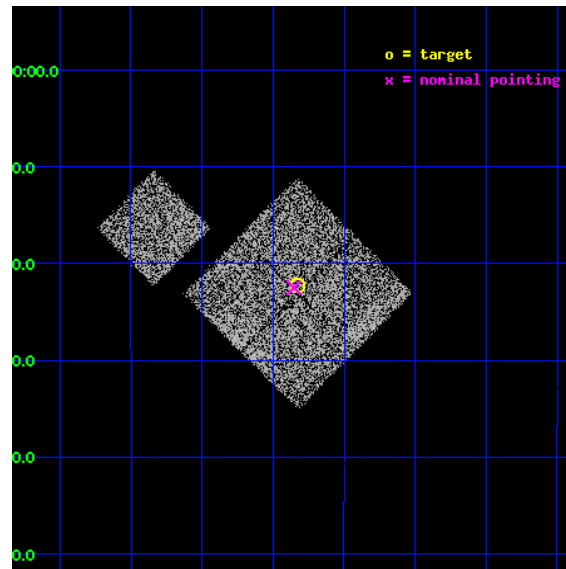
L2 Processing Date : May 30 2012

Contents

1	Front	2
2	OBI	3
2.1	OBI	3
2.1.1	Images	3
2.1.2	Bias	3
2.1.3	Parameters	4
2.1.4	Events	4
2.2	Compared Parameters	5
2.3	Aspect	6
2.4	Star Slots	9
2.4.1	Slot 3	9
2.4.2	Slot 4	10
2.4.3	Slot 5	11
2.4.4	Slot 6	12
2.4.5	Slot 7	13
2.5	FID Slots	14
2.5.1	Slot 0	14
2.5.2	Slot 1	15
2.5.3	Slot 2	16
A	Summary	17
A.1	Status	17
A.2	Comments	17

1 Front

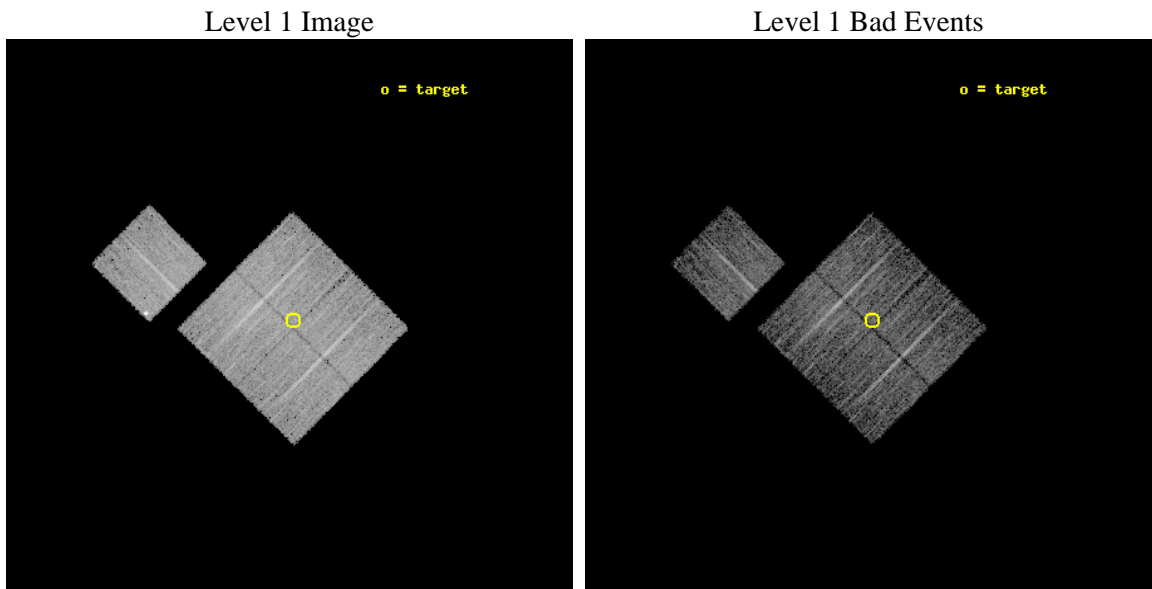
seq_num	800781	Sequence number
obs_id	10420	Observation id
title	A Chandra baseline for galaxy cluster evolution studies	Proposal t
observer	Dr Ben Maughan	Principal investigator
object	A644	Source name
dtcycle	0	
cycle	P	events from which exps? Prim/Second/Both
ra_targ	124.2062	Observer's specified target RA [deg]
dec_targ	-7.37157	Observer's specified target Dec [deg]
ra_nom	124.21334658512	Nominal RA [deg]
dec_nom	-7.3752700360725	Nominal Dec [deg]
roll_nom	314.70960933072	Nominal Roll [deg]
revision	2	Processing version of data
ontime	4970.9946059585	Sum of GTIs [s]
livetime	4906.0449018386	Livetime [s]
ontime0	4970.8714859486	Sum of GTIs [s]
ontime1	4970.9125259519	Sum of GTIs [s]
ontime2	4970.9535659552	Sum of GTIs [s]
ontime3	4970.9946059585	Sum of GTIs [s]
ontime6	4970.8304459453	Sum of GTIs [s]
l2events	20064	Number of level 2 events



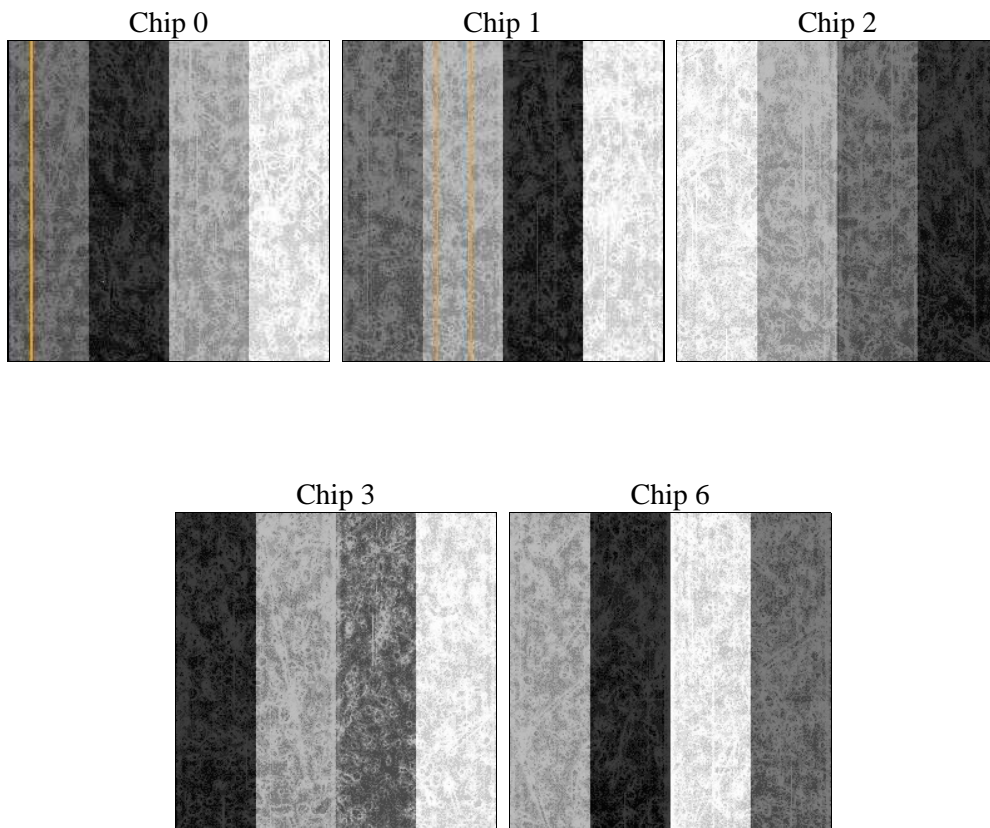
2 OBI

2.1 OBI

2.1.1 Images



2.1.2 Bias



2.1.3 Parameters

obi_num	0	Obi number	sched_exp_time	5000.000000	[s] Scheduled observation exposure time
ascdsver	8.4.4	Processing system revision	ontime	4970.9946059585	Sum of GTIs [s]
caldsver	4.4.9	 	ontime0	4970.8714859486	Sum of GTIs [s]
date	2012-05-30T23:20:54	Date and time of file creation	ontime1	4970.9125259519	Sum of GTIs [s]
revision	2	Processing version of data	ontime2	4970.9535659552	Sum of GTIs [s]
			ontime3	4970.9946059585	Sum of GTIs [s]
			ontime6	4970.8304459453	Sum of GTIs [s]
			l1events	210909	Number of level 1 events

2.1.4 Events

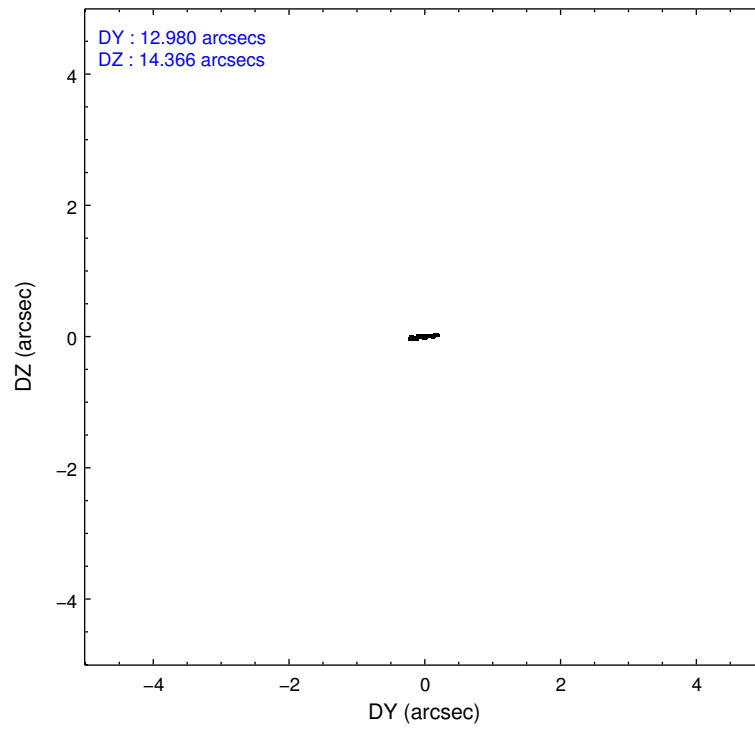
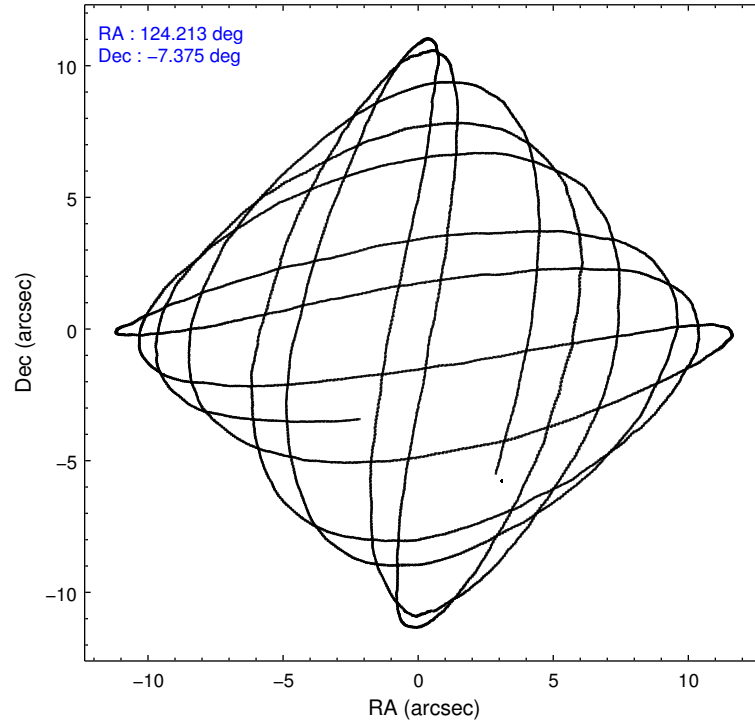
	ccd 0	ccd 1	ccd 2	ccd 3	ccd 6
level 1 events	38492	40271	45028	42336	44782
rejected events	33354	35387	39796	38148	38660
rejected %	86%	87%	88%	90%	86%

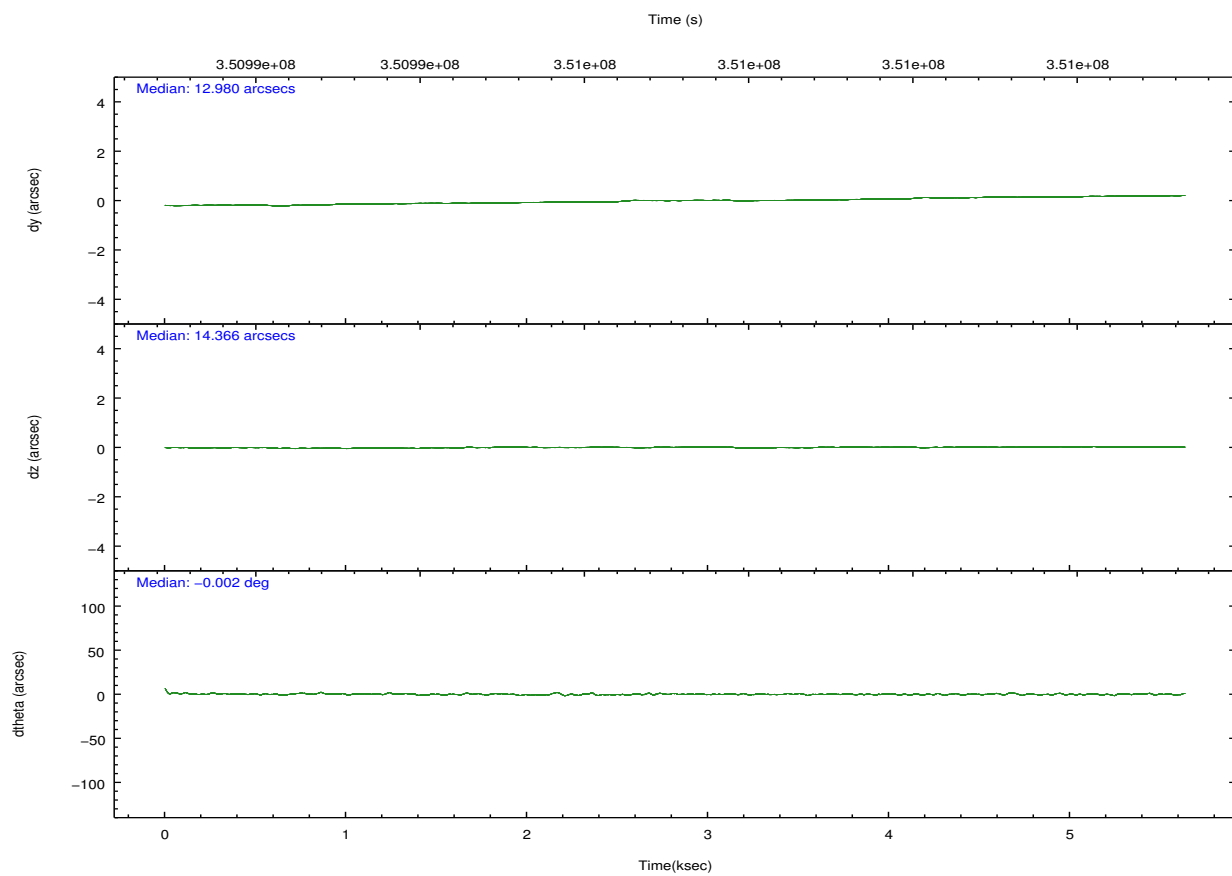
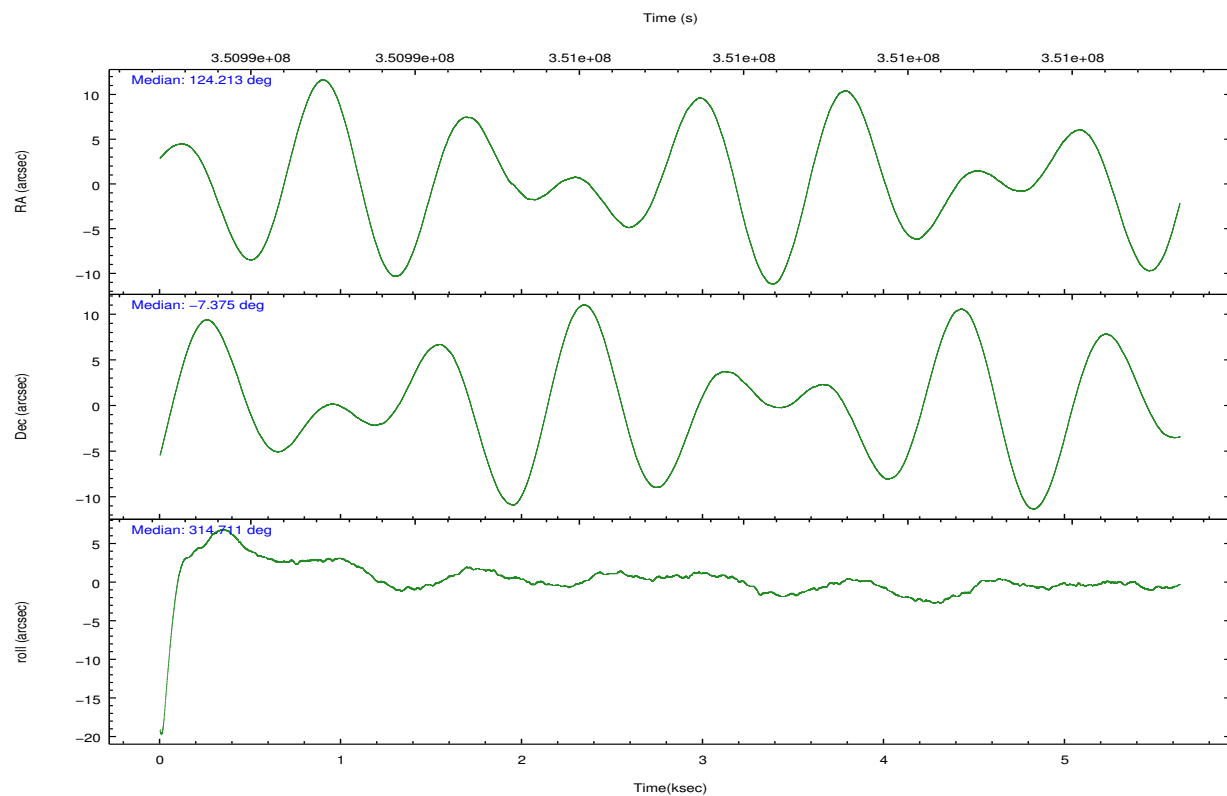
	ccd 0	ccd 1	ccd 2	ccd 3	ccd 6
grade 0 events	2073	1770	2272	1460	3151
	5%	4%	5%	3%	7%
grade 1 events	31	16	29	33	28
	0%	0%	0%	0%	0%
grade 2 events	1120	1074	1183	966	1071
	2%	2%	2%	2%	2%
grade 3 events	494	516	473	461	464
	1%	1%	1%	1%	1%
grade 4 events	506	558	490	465	486
	1%	1%	1%	1%	1%
grade 5 events	1533	1699	1449	1817	1752
	3%	4%	3%	4%	3%
grade 6 events	946	968	819	838	954
	2%	2%	1%	1%	2%
grade 7 events	31789	33670	38313	36296	36876
	82%	83%	85%	85%	82%

2.2 Compared Parameters

Parameter	Planned	Actual	Parameter	Planned	Actual
Instrument	ACIS	ACIS	Obspar format version number	7	7
Detector	ACIS-01236	ACIS-01236	Obspar file type	PREDICTED	ACTUAL
Grating	NONE	NONE	Obspar update status	NONE	UPDATED
Data mode	VFAINT	VFAINT	CCD I0 on	Y	Y
Observation mode	POINTING	POINTING	CCD I1 on	Y	Y
[deg] Pointing RA	124.186620	124.2133465851225	CCD I2 on	Y	Y
[deg] Pointing Dec	-7.368222	-7.375270036072502	CCD I3 on	Y	Y
[deg] Pointing Roll	314.497486	314.7096093307219	CCD S0 on	N	N
[mm] SIM focus pos	-0.782348	-0.7809083437167272	CCD S1 on	N	N
[mm] SIM defocus	0	0.001439871863259334	CCD S2 on	O1	Y
[mm] SIM translation stage pos	-233.592463	-233.5874344608287	CCD S3 on	N	N
[mm] SIM translation stage offset	0	-0.005018542100998502	CCD S4 on	N	N
[s] Observation start time (MET)	350993375.184000	350992165.66269	CCD S5 on	N	N
Observation start date	2009-02-14T10:08:29	2009-02-14T09:49:25	Number of optional ACIS chips dropped	0	0
[s] Observation end time (MET)	350998375.184000	350999653.28806	On-chip summing requested	N	N
Observation end date	2009-02-14T11:31:49	2009-02-14T11:54:13	Subarray requested	NONE	NONE
Read mode	TIMED	TIMED	Alternating exposures requested	N	N
			[s] Primary exposure time	0.000000	3.1

2.3 Aspect



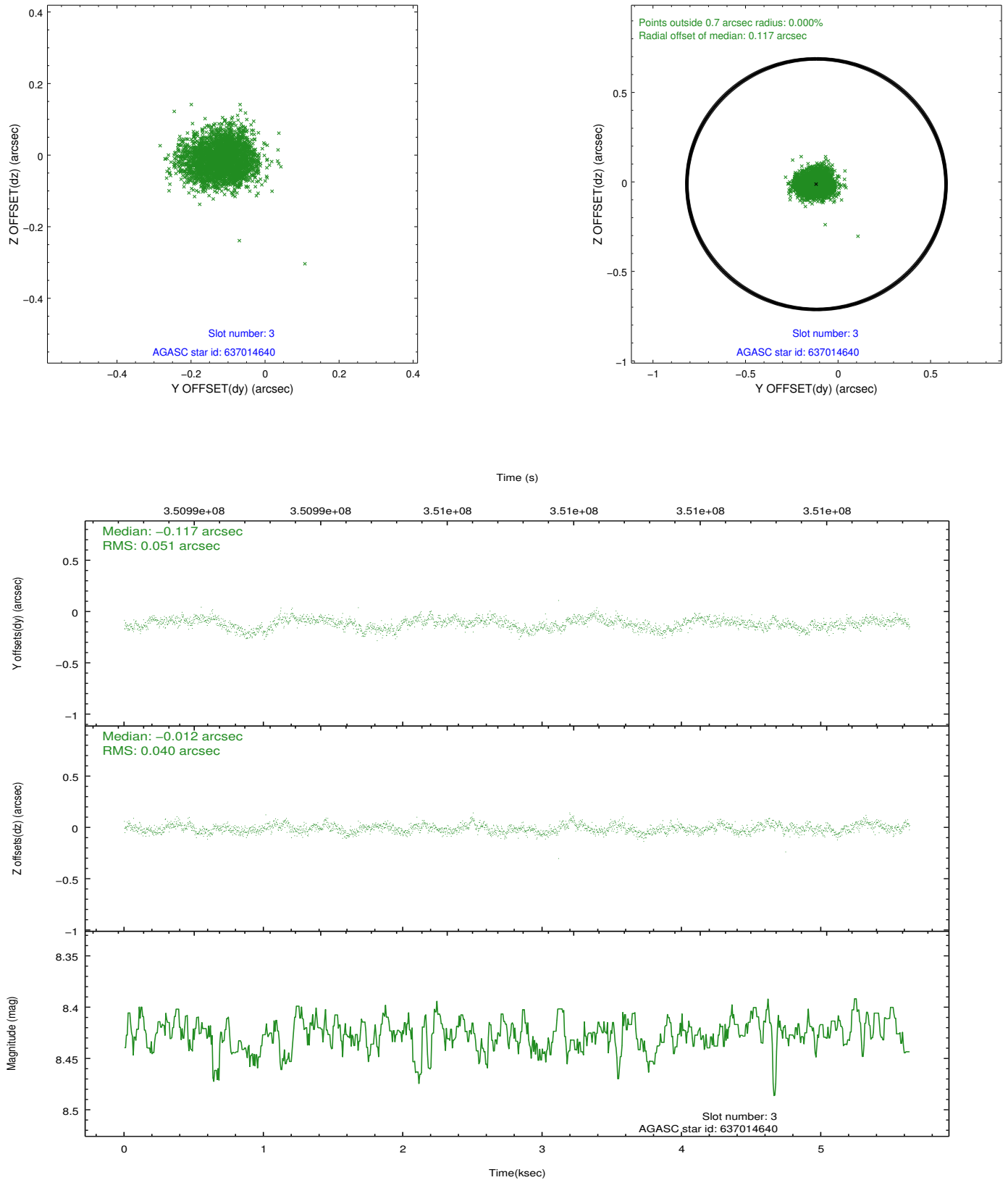


Slot Statistics

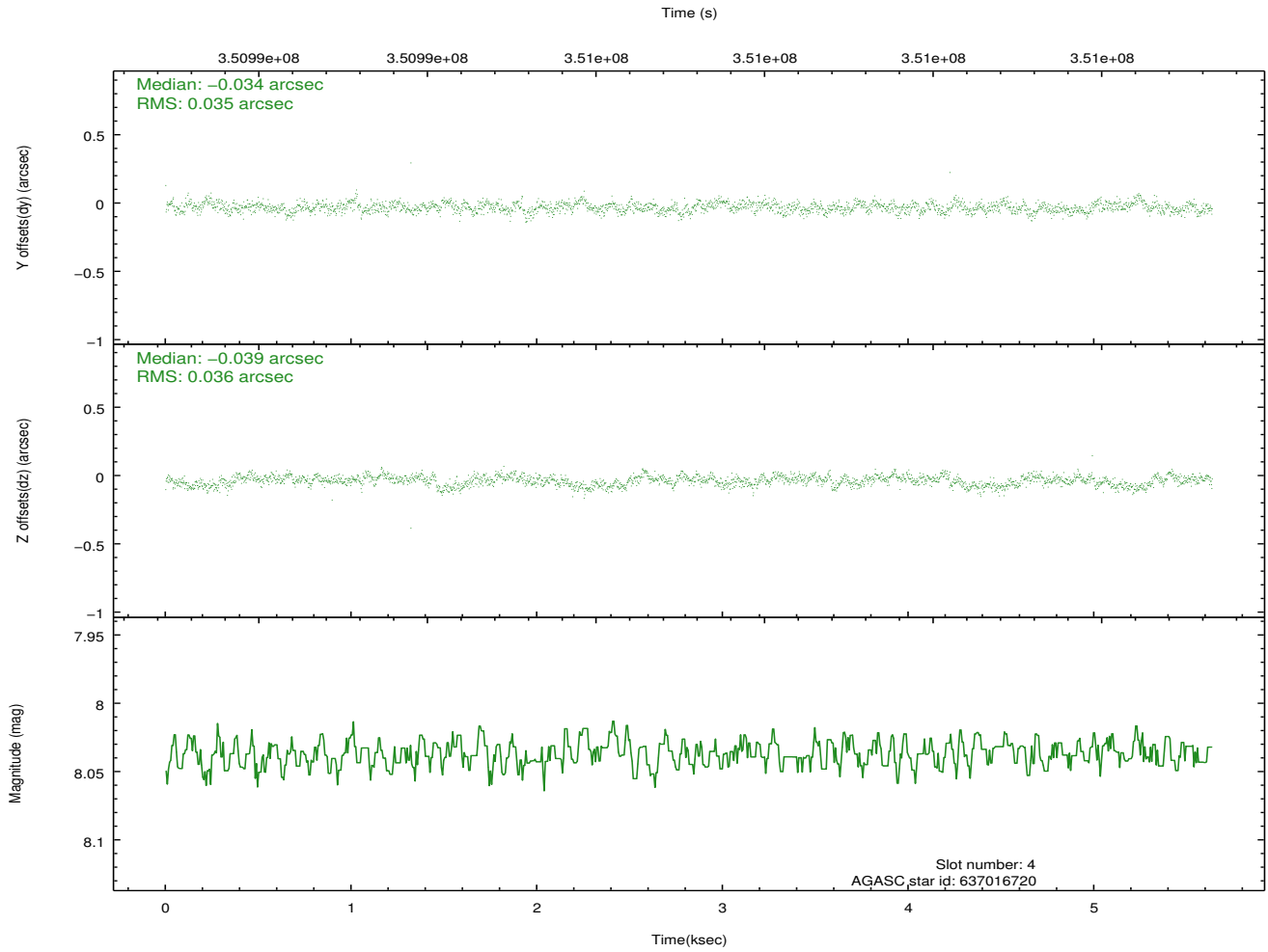
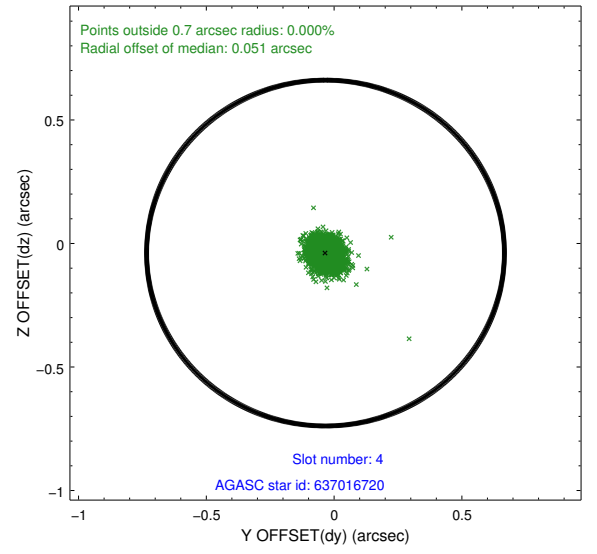
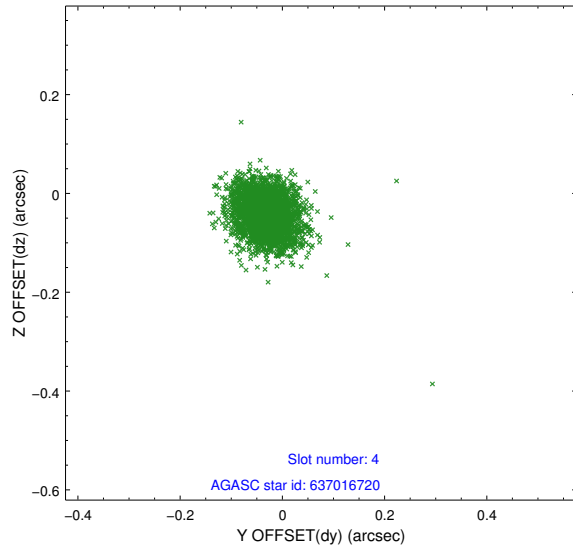
slot	status	id	mag	n_pts	med_dy	med_dz	dr1	dr2	ra	dec	mean_y	mean_z
0	FID	ACIS-I-2	6.93	1375	-0.078	-0.077	0.009	0.015	0.000000	0.000000	-767.70	-844.39
1	FID	ACIS-I-4	6.94	1375	0.210	0.070	0.007	0.013	0.000000	0.000000	2146.15	1061.41
2	FID	ACIS-I-5	7.01	1375	-0.233	0.076	0.009	0.015	0.000000	0.000000	-1820.33	1060.45
3	GUIDE	637014640	8.43	2748	-0.117	-0.012	0.069	0.109	124.901530	-7.342721	1725.45	1883.61
4	GUIDE	637016720	8.04	2750	-0.034	-0.039	0.052	0.085	124.059895	-6.973963	-1328.65	672.43
5	GUIDE	637022720	8.26	2749	0.011	-0.129	0.062	0.097	123.782209	-6.918897	-2165.33	101.47
6	GUIDE	637022800	8.23	2749	0.008	0.260	0.061	0.100	123.882296	-7.124417	-1388.11	-160.16
7	GUIDE	711335880	7.90	2748	0.129	-0.081	0.060	0.098	124.602828	-7.571278	1562.74	546.30

2.4 Star Slots

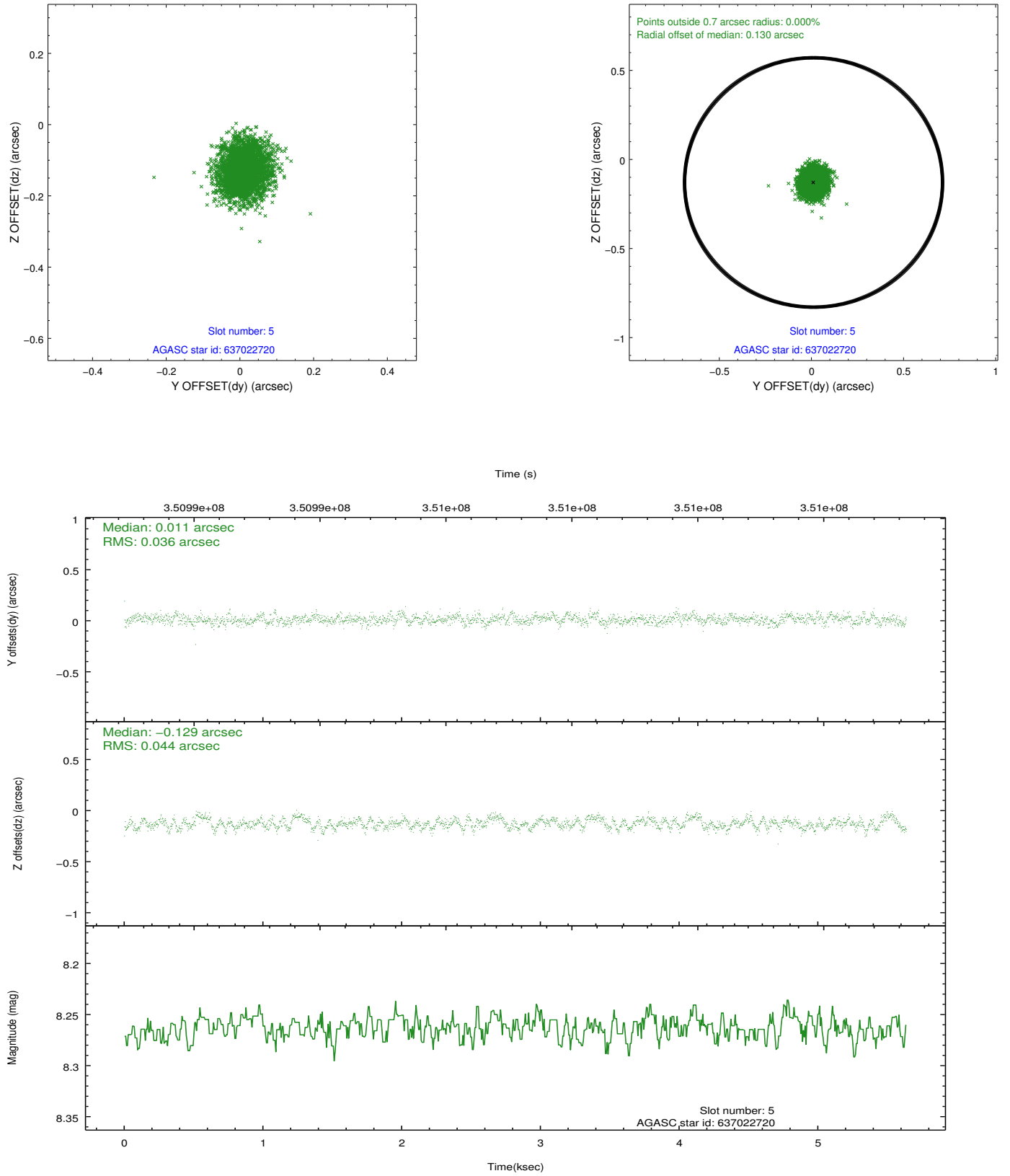
2.4.1 Slot 3



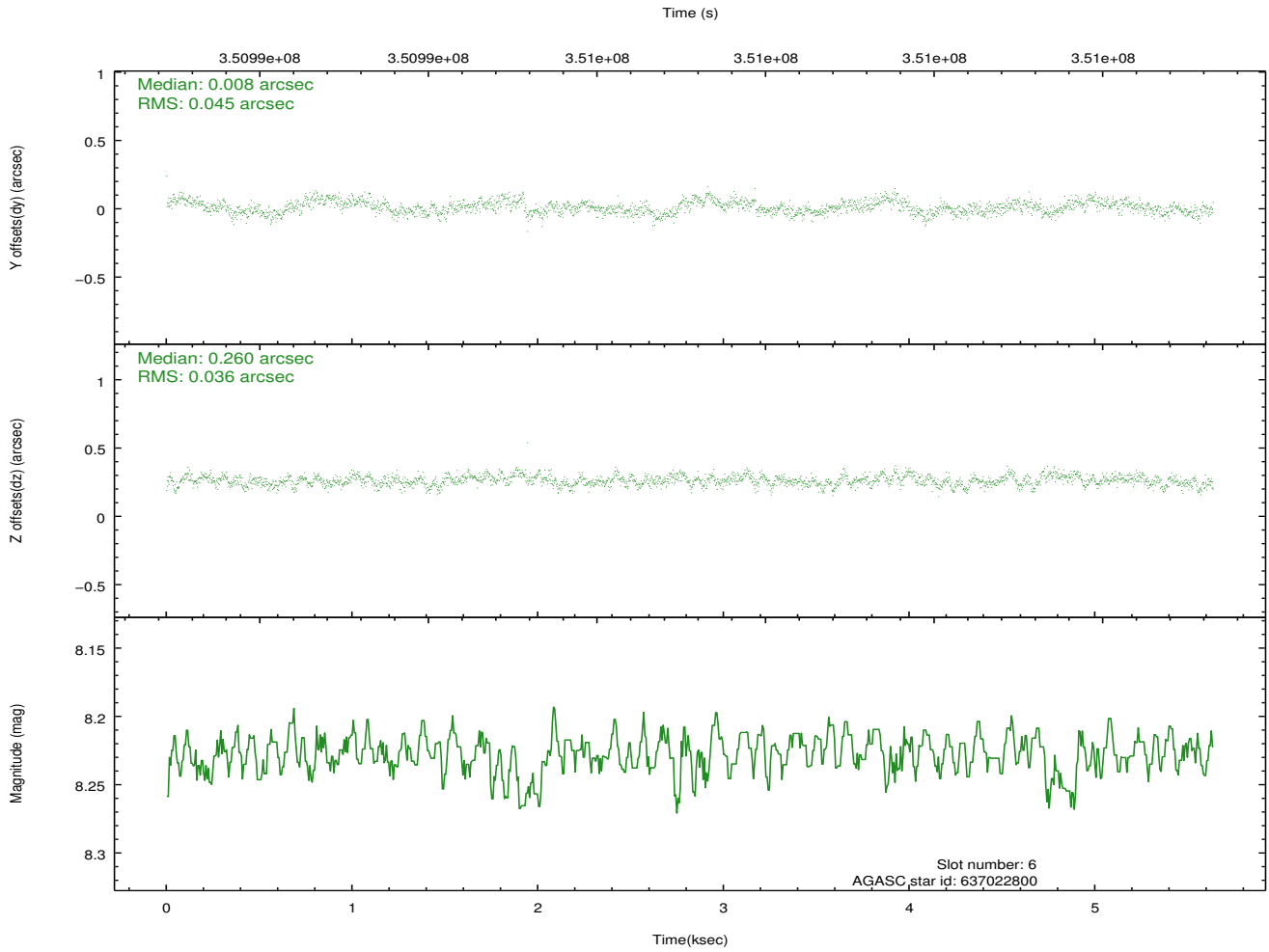
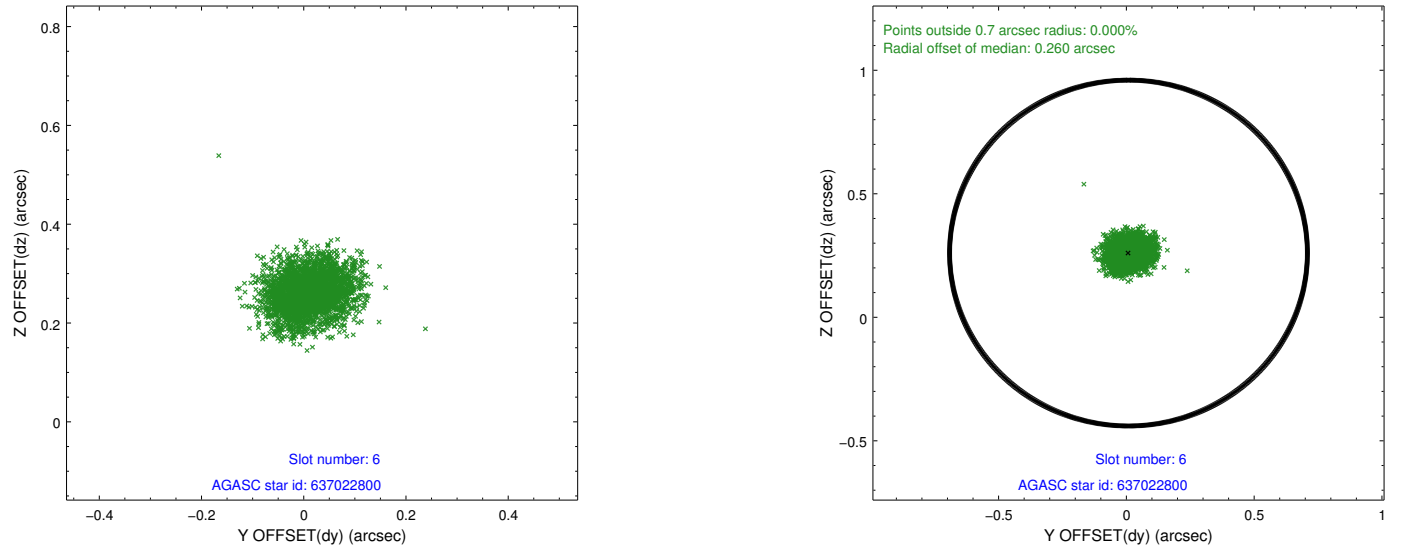
2.4.2 Slot 4



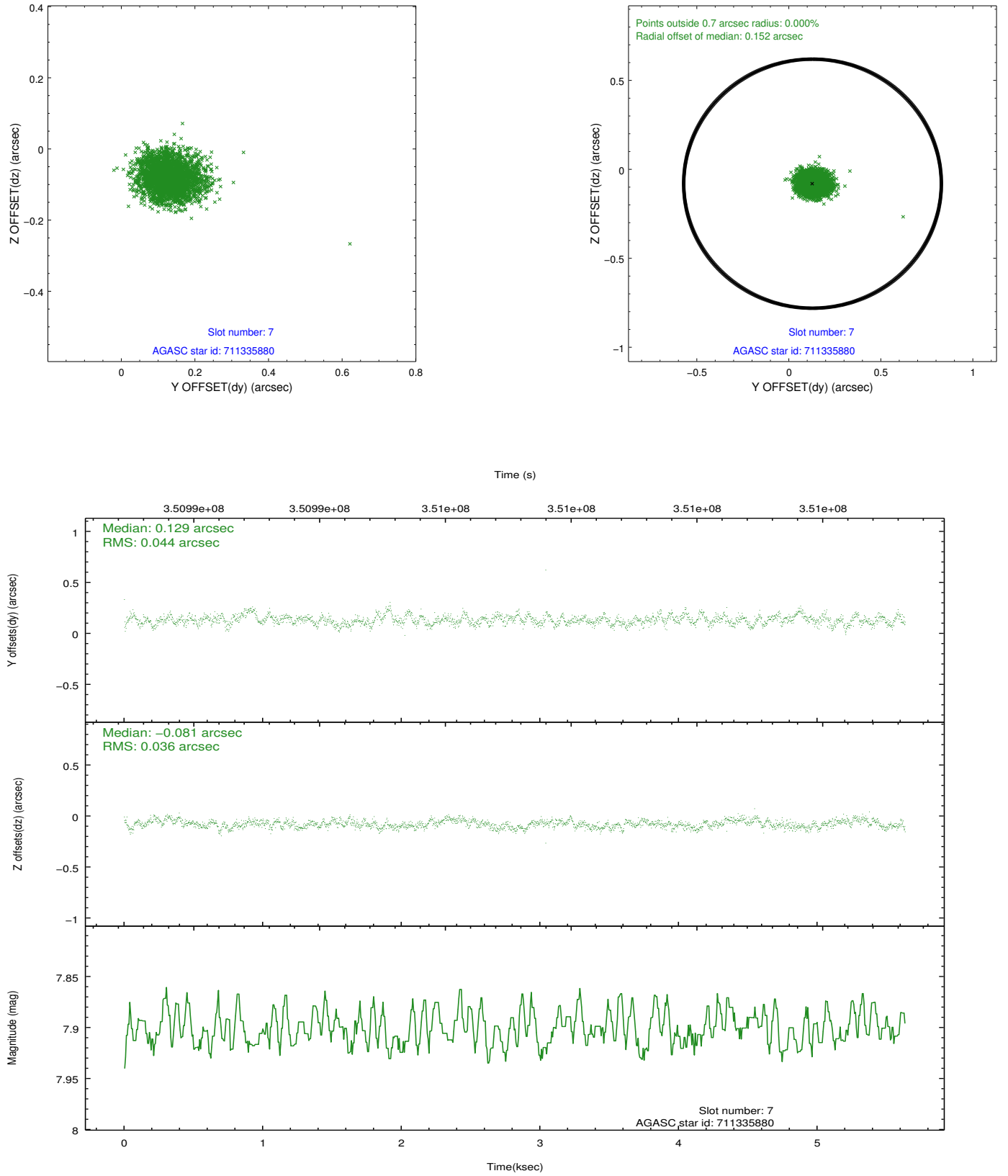
2.4.3 Slot 5



2.4.4 Slot 6

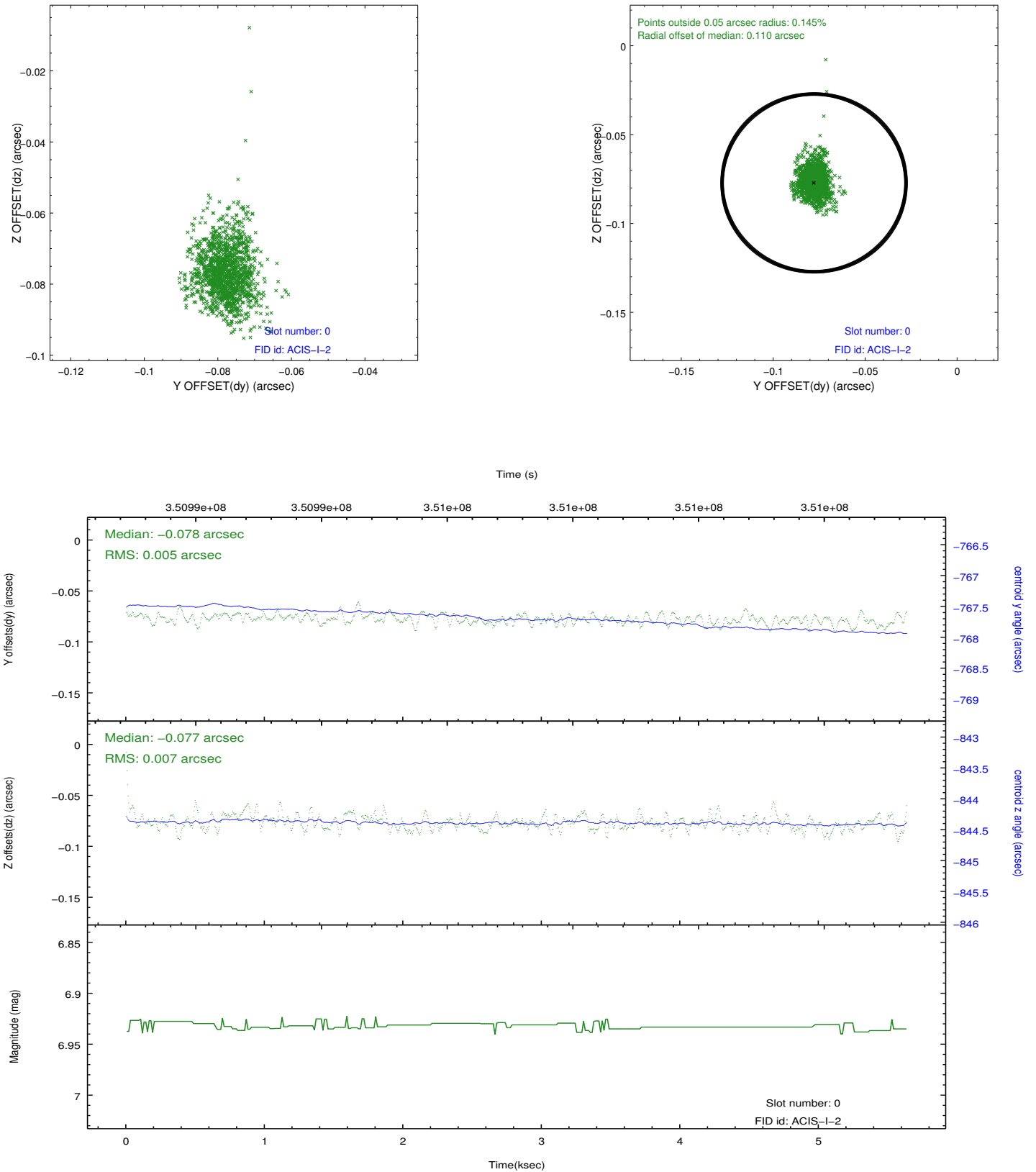


2.4.5 Slot 7

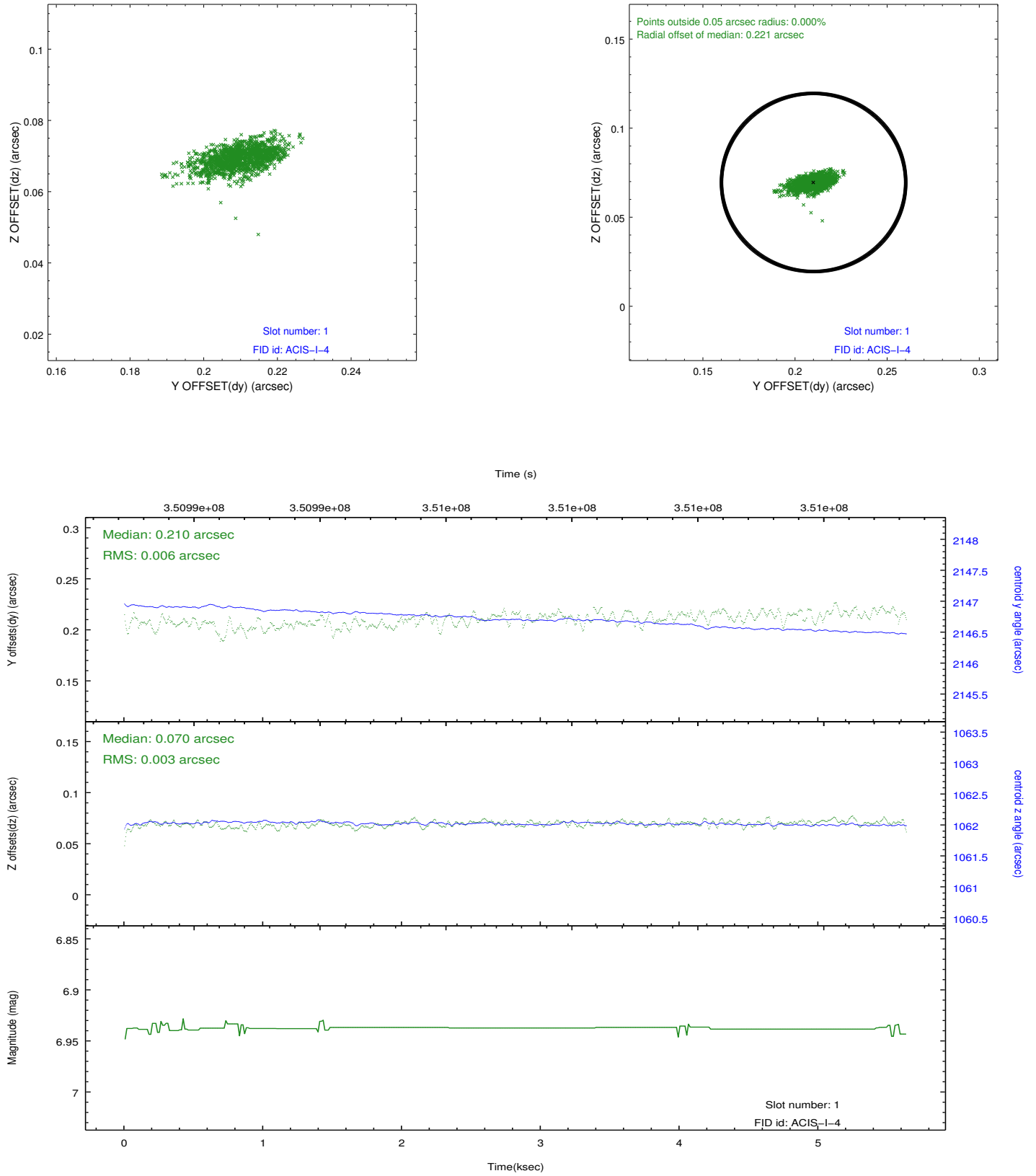


2.5 FID Slots

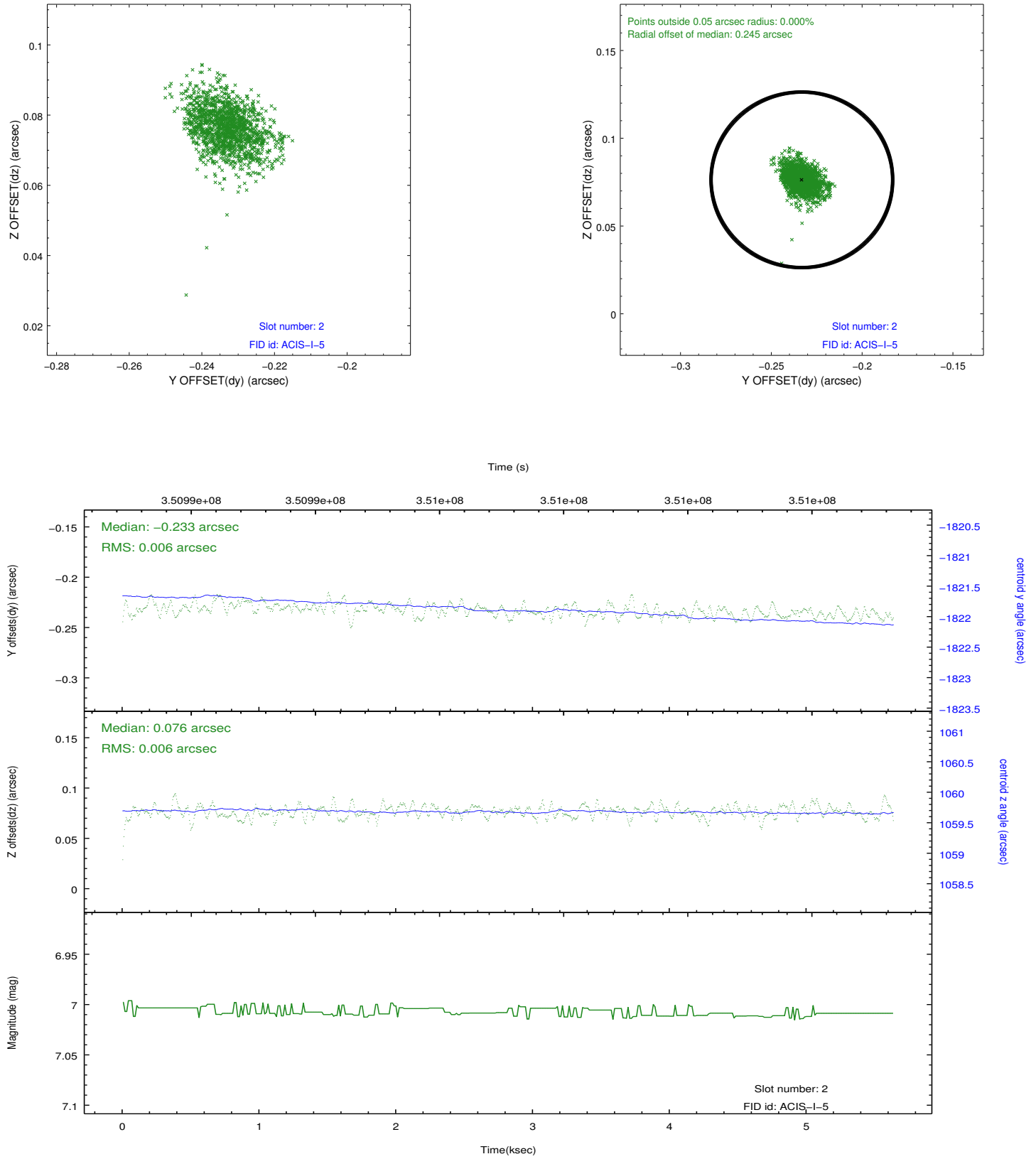
2.5.1 Slot 0



2.5.2 Slot 1



2.5.3 Slot 2



A Summary

A.1 Status

V&V Scientist	Joy Nichols
V&V Date (YYYY-MM-DD)	2012.06.05
V&V Edition	1
V&V Disposition and Status	OK
V&V Charge Time	4.9724000382423

A.2 Comments