

# V&V Reference Report

## L2 ASCDS Version : 8.4.4

Observation 10367 - L2 Version 2  
Chandra X-Ray Center

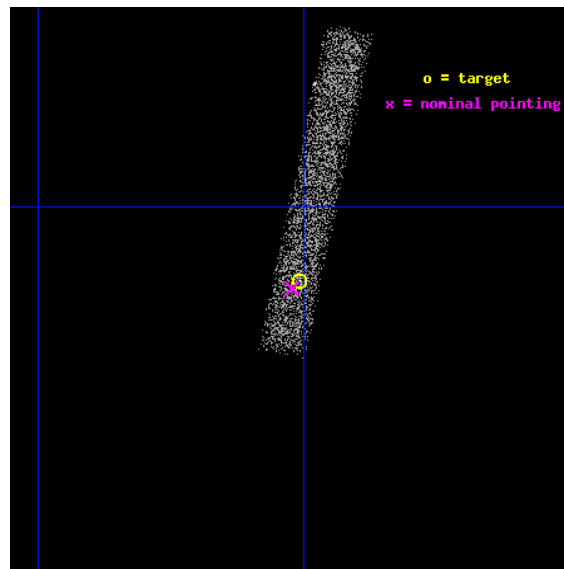
L2 Processing Date : May 31 2012

## Contents

<b>1</b>	<b>Front</b>	<b>2</b>
<b>2</b>	<b>OBI</b>	<b>3</b>
2.1	OBI . . . . .	3
2.1.1	Images . . . . .	3
2.1.2	Bias . . . . .	3
2.1.3	Parameters . . . . .	4
2.1.4	Events . . . . .	4
2.2	Compared Parameters . . . . .	5
2.3	Aspect . . . . .	6
2.4	Star Slots . . . . .	9
2.4.1	Slot 3 . . . . .	9
2.4.2	Slot 4 . . . . .	10
2.4.3	Slot 5 . . . . .	11
2.4.4	Slot 6 . . . . .	12
2.4.5	Slot 7 . . . . .	13
2.5	FID Slots . . . . .	14
2.5.1	Slot 0 . . . . .	14
2.5.2	Slot 1 . . . . .	15
2.5.3	Slot 2 . . . . .	16
<b>A</b>	<b>Summary</b>	<b>17</b>
A.1	Status . . . . .	17
A.2	Comments . . . . .	17

# 1 Front

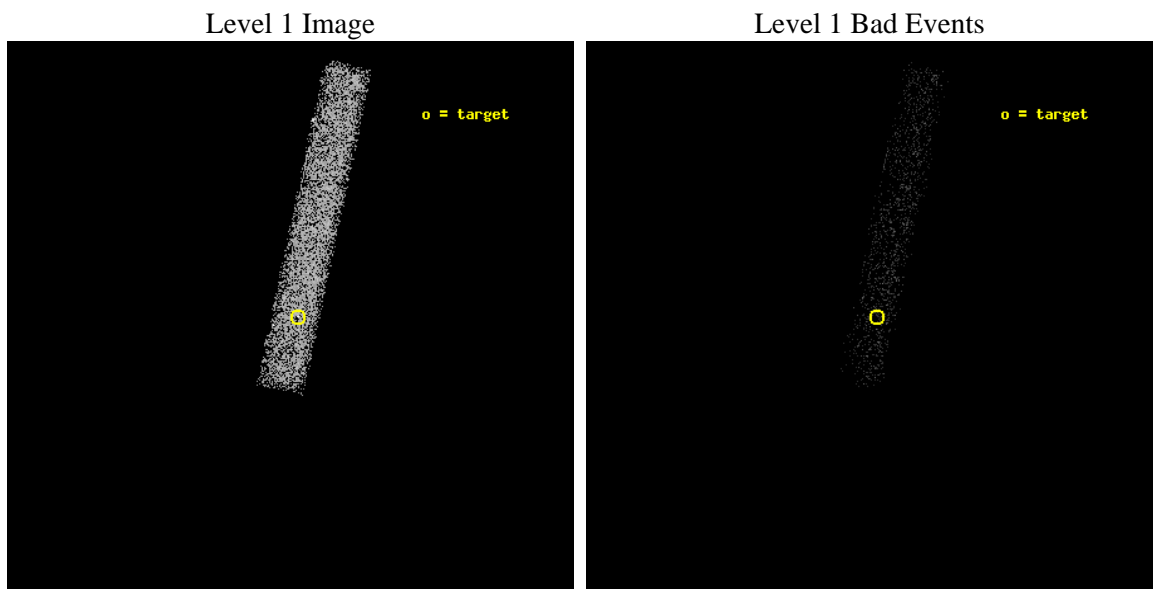
seq_num	701910	Sequence number
obs_id	10367	Observation id
title	Completing a Flux-limited Survey for X-ray Emission from Radio Jets	&#160
observer	Dr. Herman Marshall	Principal investigator
object	0508-220	Source name
dtcycle	0	&#160
cycle	P	events from which exps? Prim/Second/Both
ra_targ	77.752083	Observer's specified target RA [deg]
dec_targ	-22.032028	Observer's specified target Dec [deg]
ra_nom	77.755759859193	Nominal RA [deg]
dec_nom	-22.035446996688	Nominal Dec [deg]
roll_nom	282.03634522	Nominal Roll [deg]
revision	2	Processing version of data
ontime	5837.5996520519	Sum of GTIs [s]
livetime	5294.3947506366	Livetime [s]
ontime7	5837.5996520519	Sum of GTIs [s]
l2events	5169	Number of level 2 events



## 2 OBI

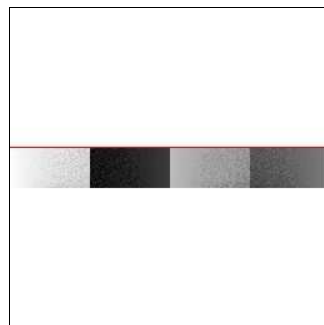
### 2.1 OBI

#### 2.1.1 Images



#### 2.1.2 Bias

Chip 7



### 2.1.3 Parameters

obi_num	0	Obi number	sched_exp_time	5700.000000	[s] Scheduled observation exposure time
ascdsver	8.4.4	Processing system revision	ontime	5837.5996520519	Sum of GTIs [s]
caldsver	4.4.9	&#160	ontime7	5837.5996520519	Sum of GTIs [s]
date	2012-05-31T14:32:00	Date and time of file creation	l1events	13052	Number of level 1 events
revision	2	Processing version of data			

### 2.1.4 Events

	<b>ccd 7</b>
level 1 events	13052
rejected events	7694
rejected %	58%

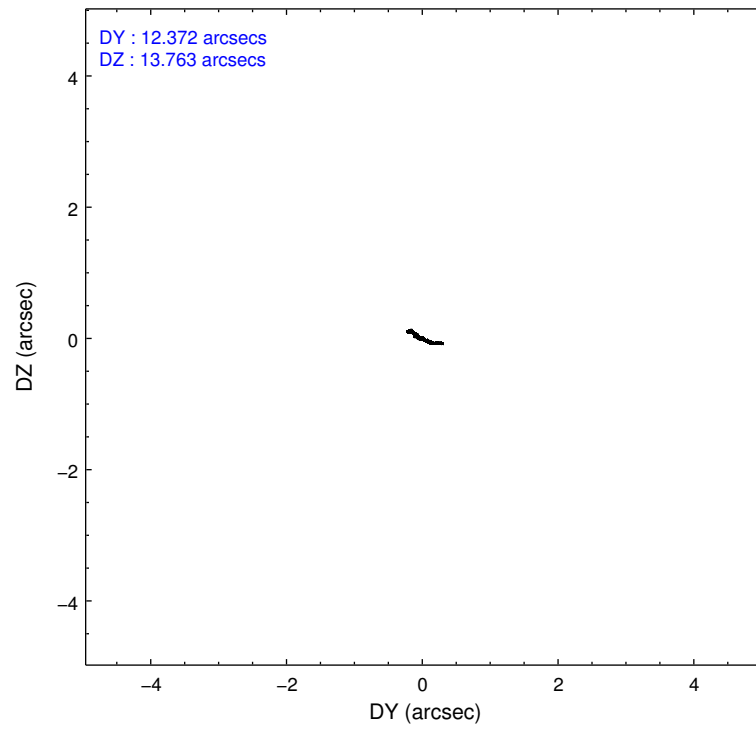
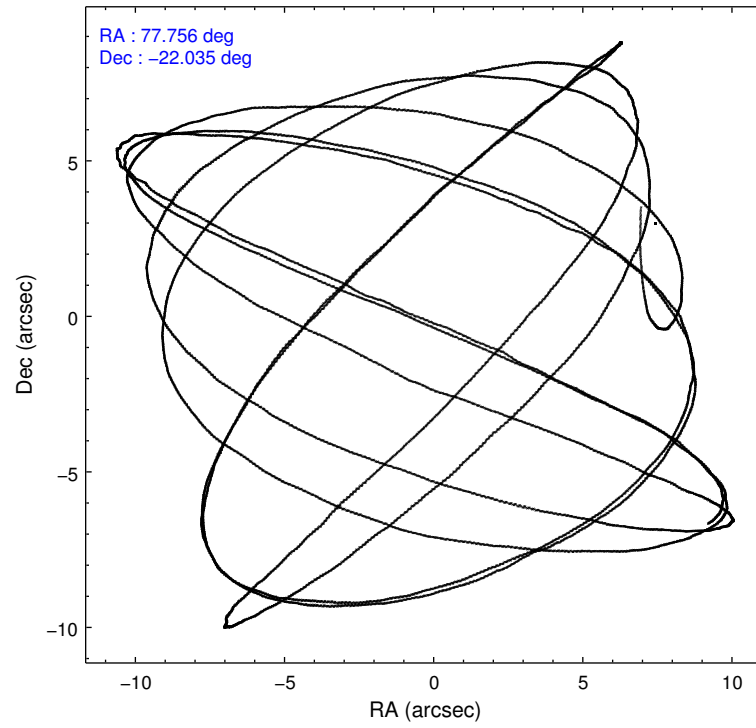
	<b>ccd 7</b>
grade 0 events	630
	4%
grade 1 events	12
	0%
grade 2 events	1225
	9%
grade 3 events	783
	5%
grade 4 events	748
	5%
grade 5 events	1192
	9%
grade 6 events	2773
	21%
grade 7 events	5689
	43%

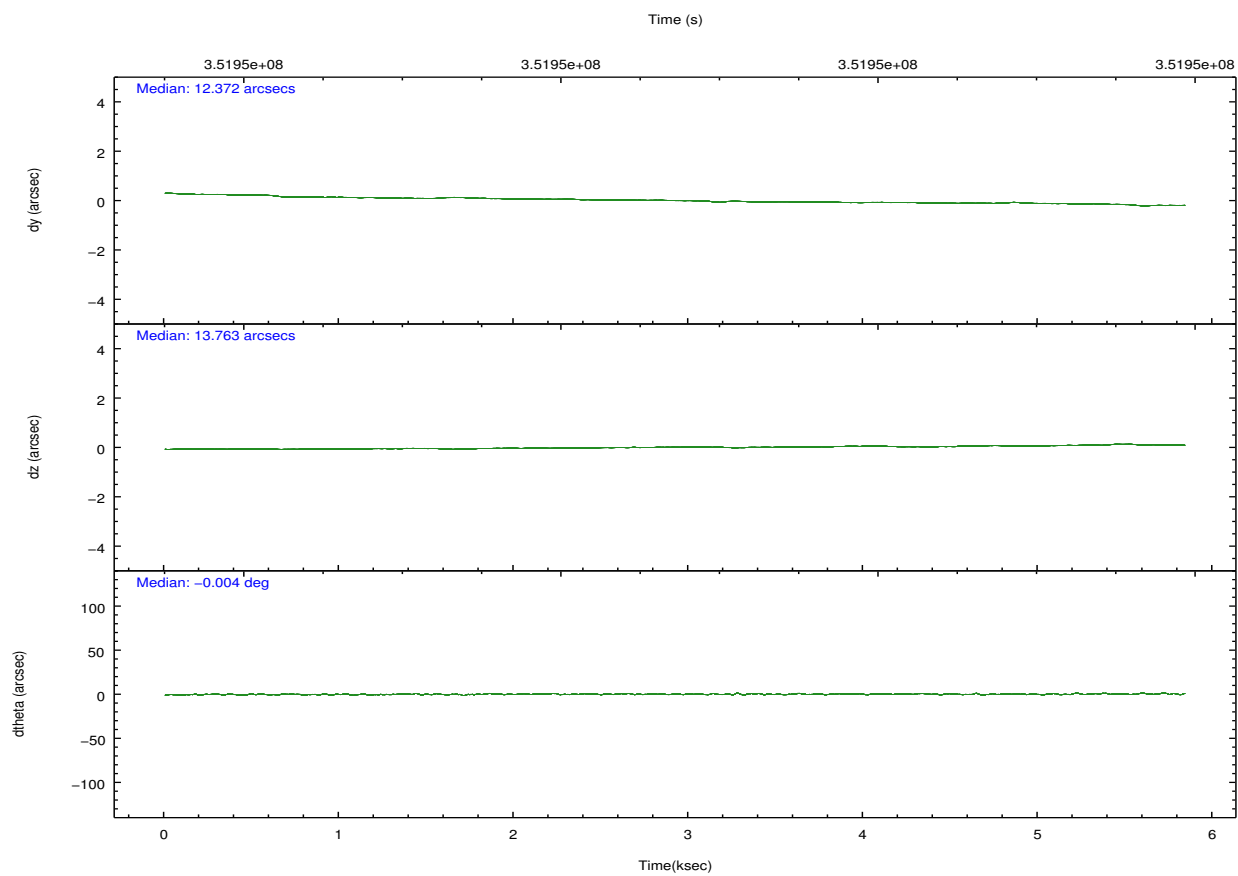
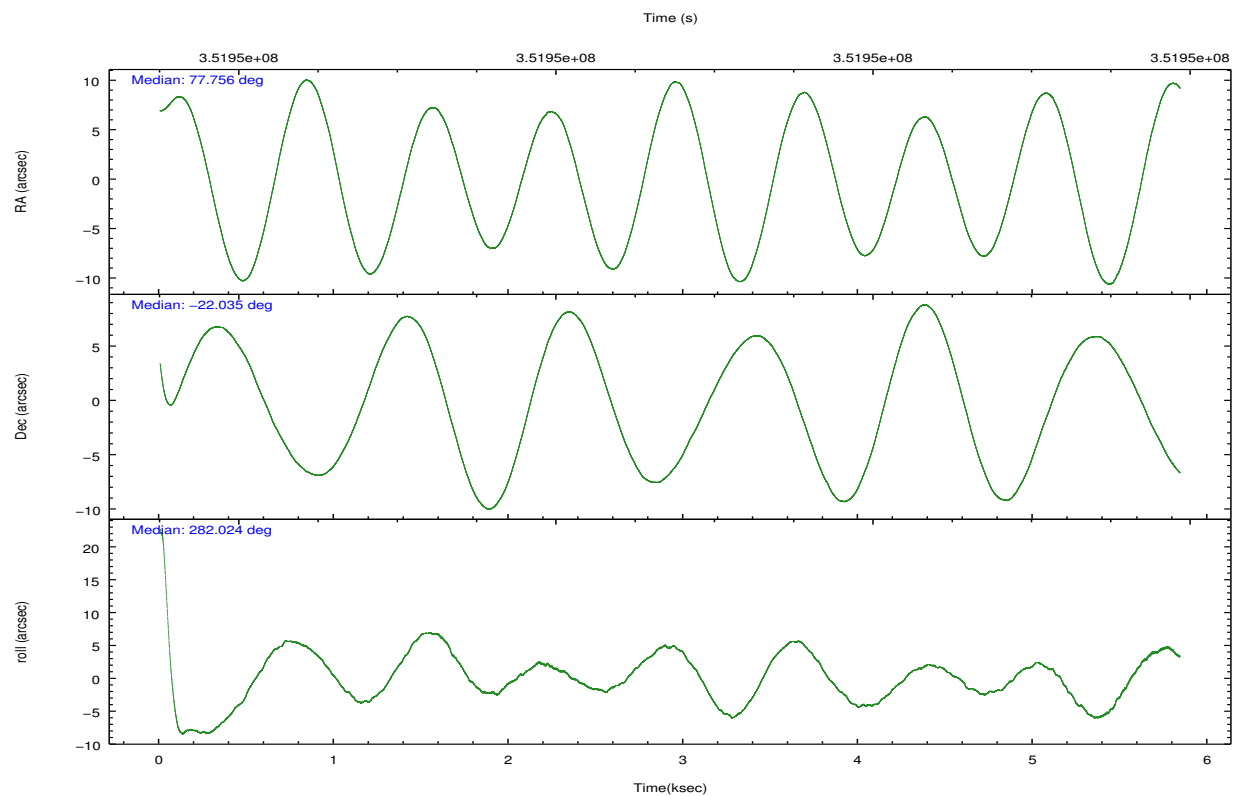


## 2.2 Compared Parameters

Parameter	Planned	Actual	Parameter	Planned	Actual
Instrument	ACIS	ACIS	Obspar format version number	7	7
Detector	ACIS-7	ACIS-7	Obspar file type	PREDICTED	ACTUAL
Grating	NONE	NONE	Obspar update status	NONE	UPDATED
Data mode	VFAINT	VFAINT	Number of optional ACIS chips dropped	0	0
Observation mode	POINTING	POINTING	On-chip summing requested	N	N
[deg] Pointing RA	77.735649	77.75575985919286	Subarray requested	CUSTOM	1/8
[deg] Pointing Dec	-22.015478	-22.03544699668844	Subarray start row	449	449
[deg] Pointing Roll	281.872107	282.0363452199978	Subarray row count	128	128
[mm] SIM focus pos	-0.684267	-0.6828225247311905	Alternating exposures requested	N	N
[mm] SIM defocus	0	0.001444936568705701	[s] Primary exposure time	0.000000	0.4
[mm] SIM translation stage pos	-190.132523	-190.1400660498719			
[mm] SIM translation stage offset	0	0.00754346686406393			
[s] Observation start time (MET)	351945939.184000	351944852.98495			
Observation start date	2009-02-25T10:44:33	2009-02-25T10:27:32			
[s] Observation end time (MET)	351951639.184000	351952331.38532			
Observation end date	2009-02-25T12:19:33	2009-02-25T12:32:11			
Read mode	TIMED	TIMED			

## 2.3 Aspect



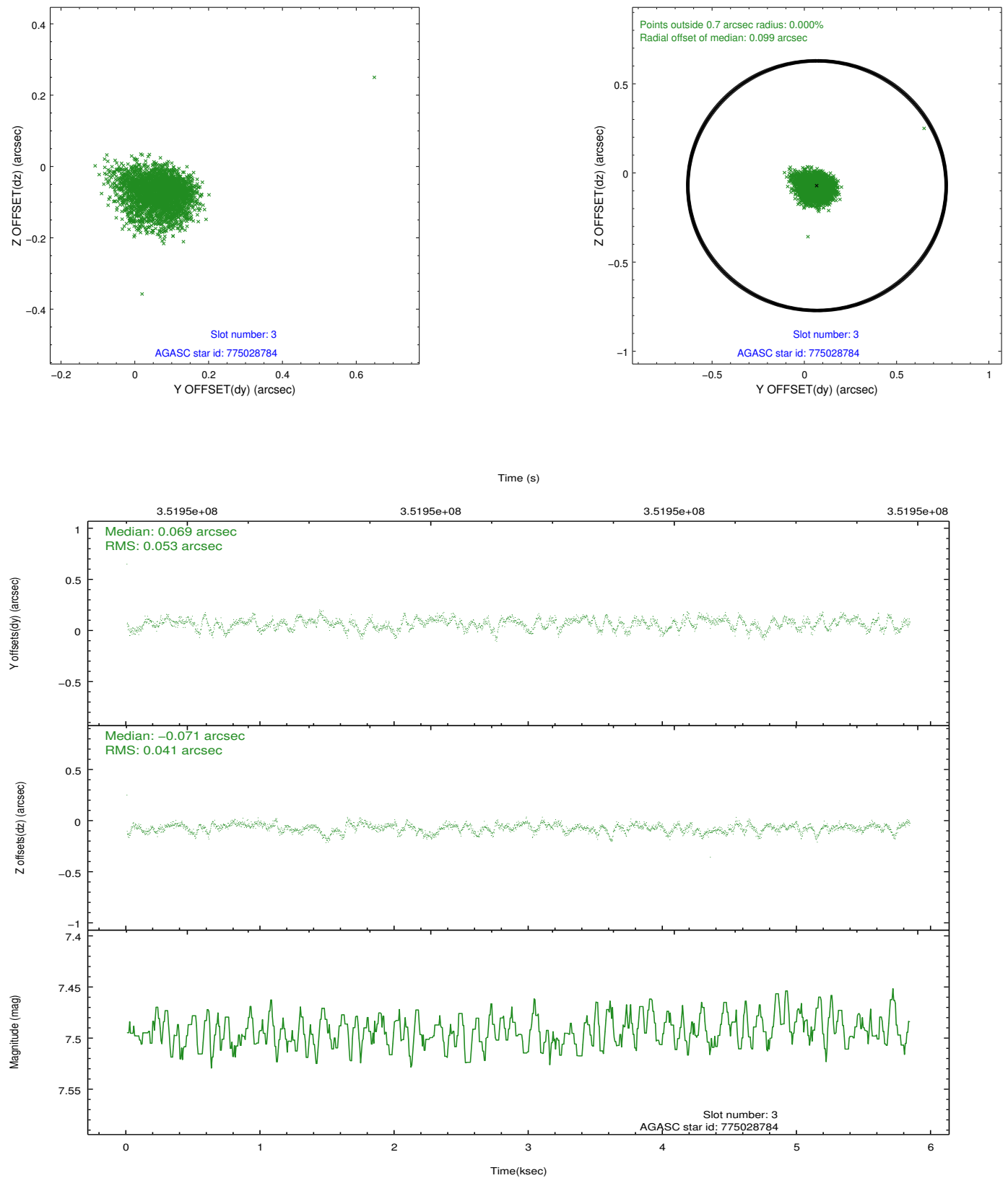


### Slot Statistics

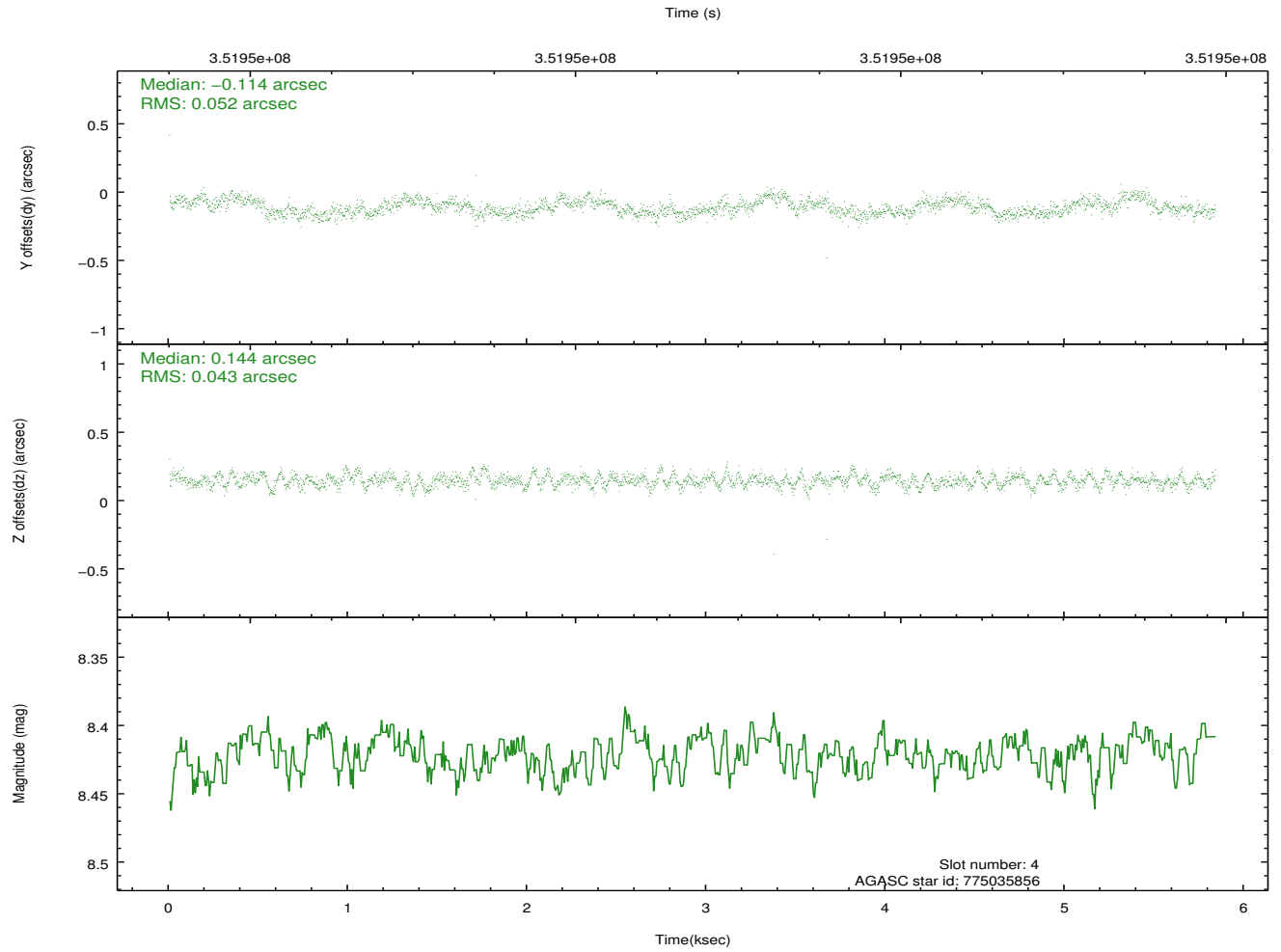
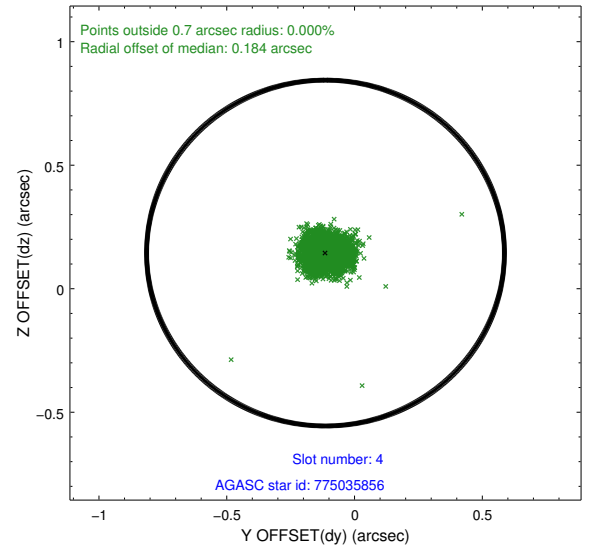
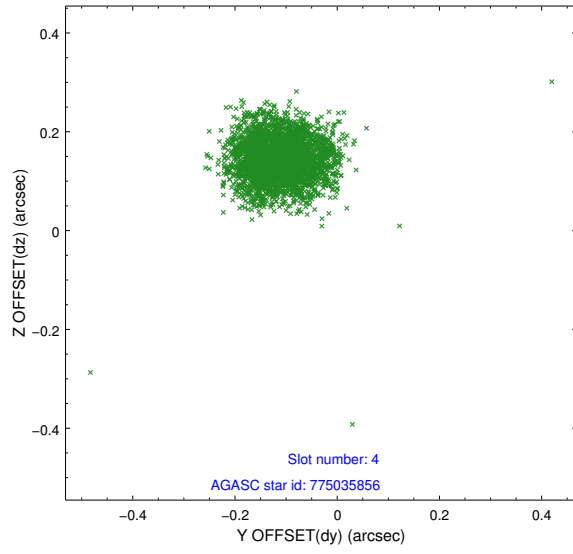
slot	status	id	mag	n_pts	med_dy	med_dz	dr1	dr2	ra	dec	mean_y	mean_z
0	FID	ACIS-S-2	6.93	1424	-0.058	-0.023	0.006	0.011	0.000000	0.000000	-765.34	-1735.13
1	FID	ACIS-S-4	7.02	1423	0.083	0.027	0.006	0.010	0.000000	0.000000	2147.61	172.34
2	FID	ACIS-S-6	7.16	1423	-0.052	0.003	0.006	0.012	0.000000	0.000000	397.96	810.88
3	GUIDE	775028784	7.49	2848	0.069	-0.071	0.070	0.112	77.430454	-22.494011	1478.99	-1348.04
4	GUIDE	775035856	8.42	2848	-0.114	0.144	0.071	0.109	77.577341	-21.773568	-959.82	-339.40
5	GUIDE	775170816	9.45	2847	-0.026	0.041	0.116	0.187	78.208003	-21.693348	-807.69	1784.14
6	GUIDE	848429784	8.19	2842	0.158	-0.213	0.086	0.137	77.215403	-22.634799	1830.04	-2150.19
7	GUIDE	775161064	9.09	2835	-0.089	0.104	0.102	0.163	78.367343	-22.025657	474.51	2054.00

## 2.4 Star Slots

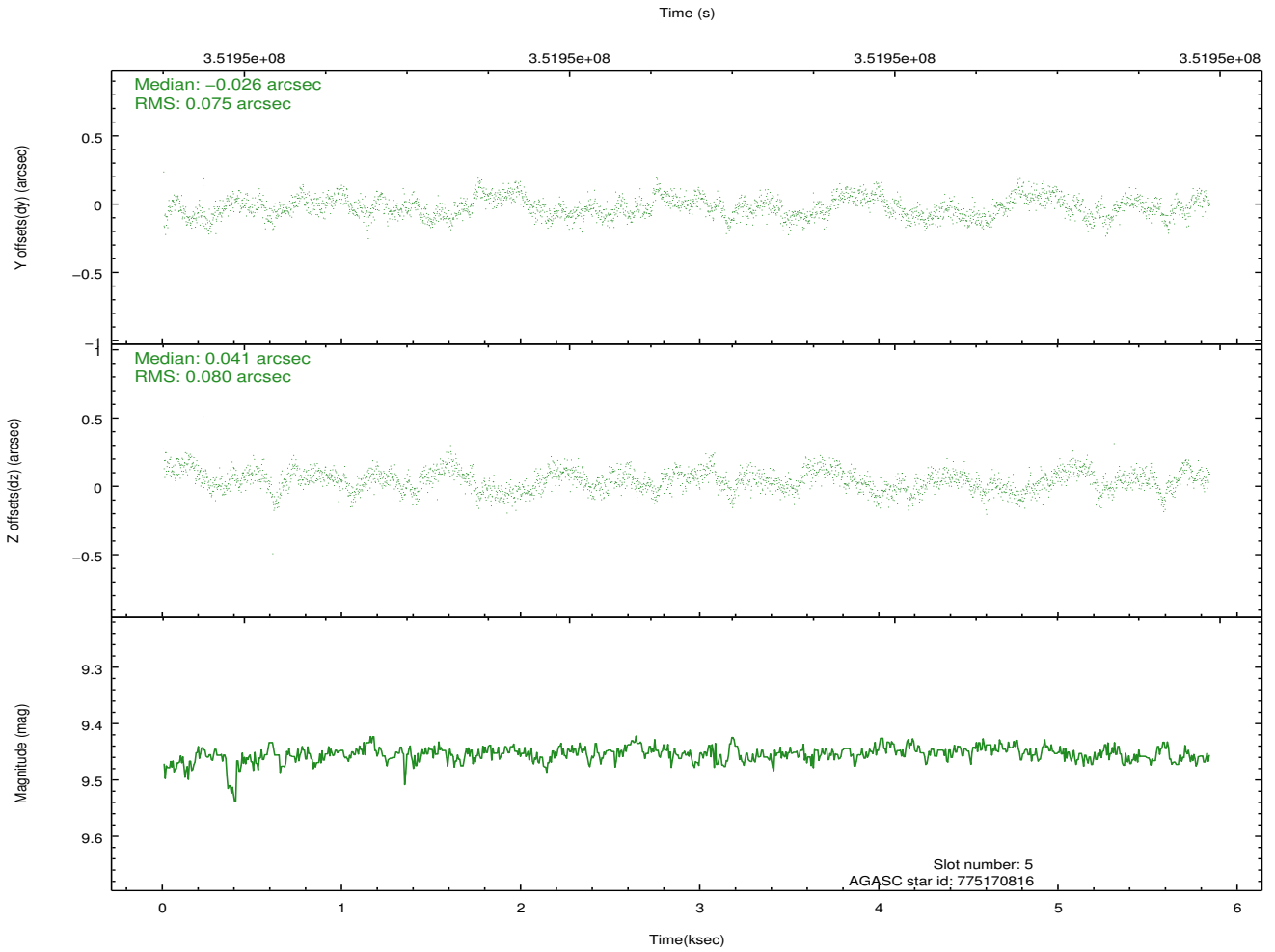
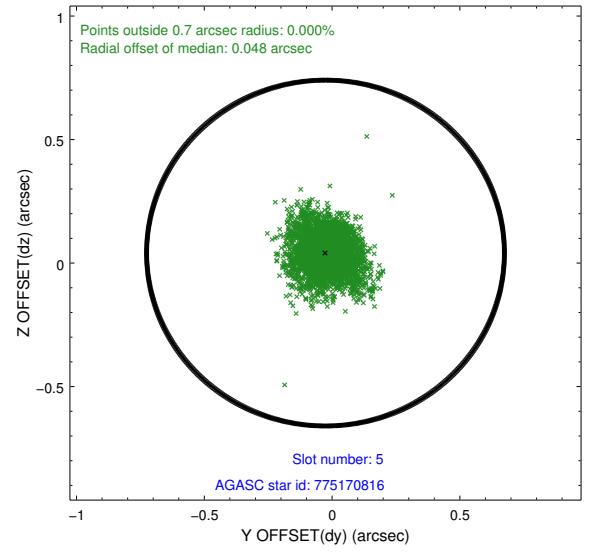
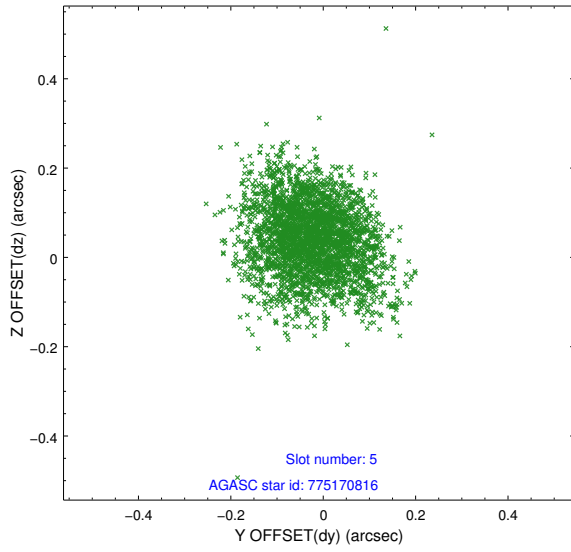
### 2.4.1 Slot 3



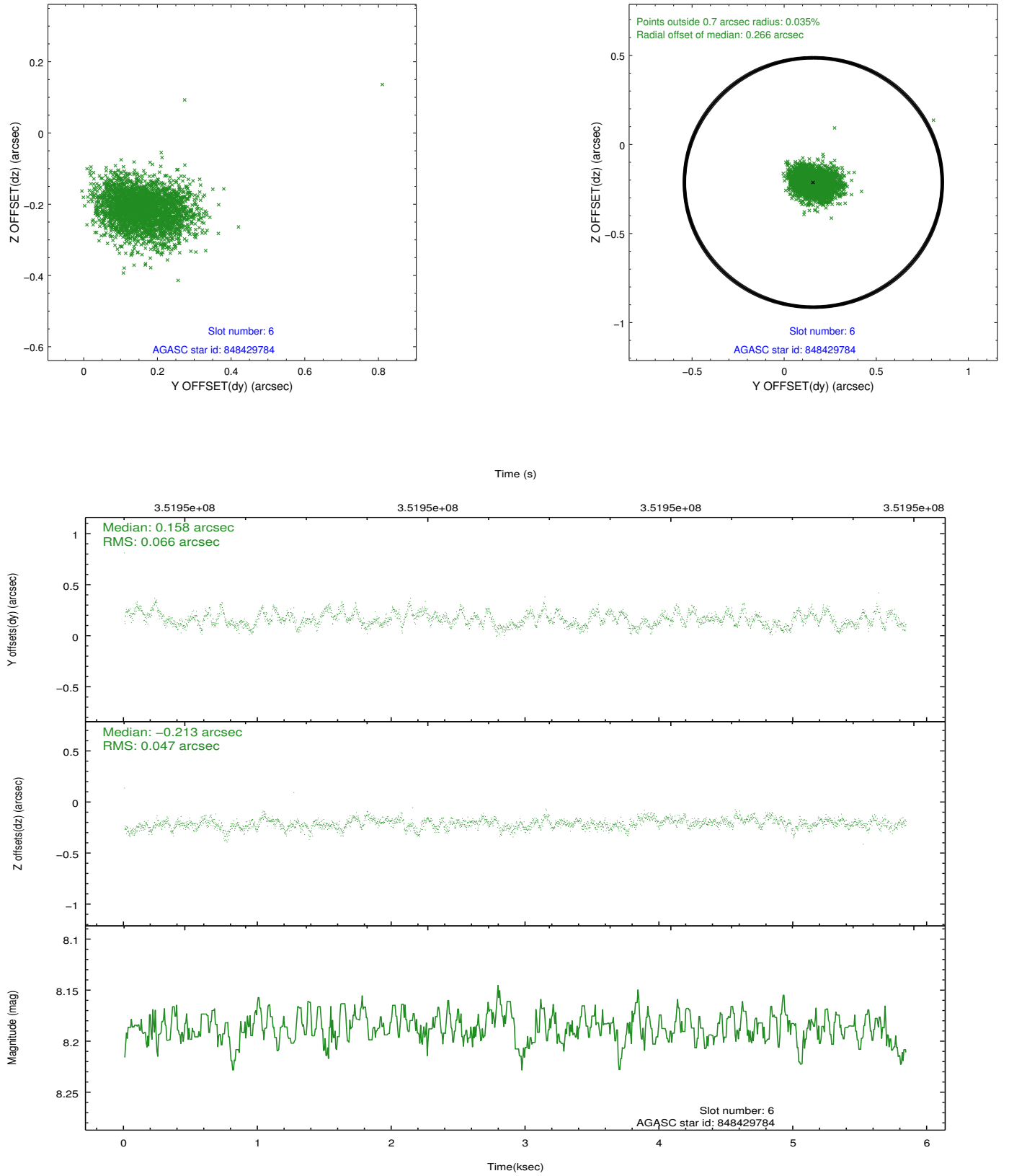
## 2.4.2 Slot 4



### 2.4.3 Slot 5

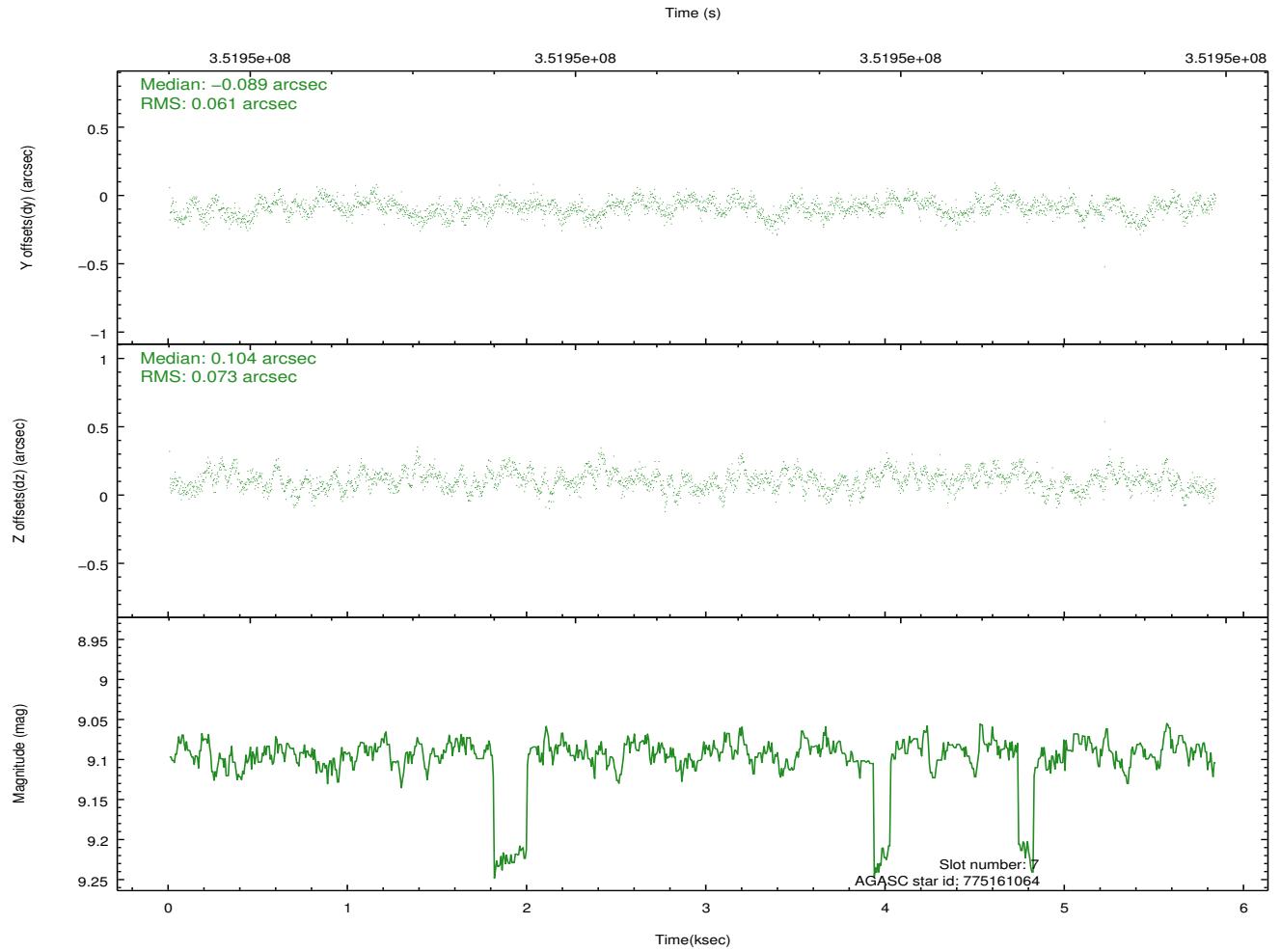
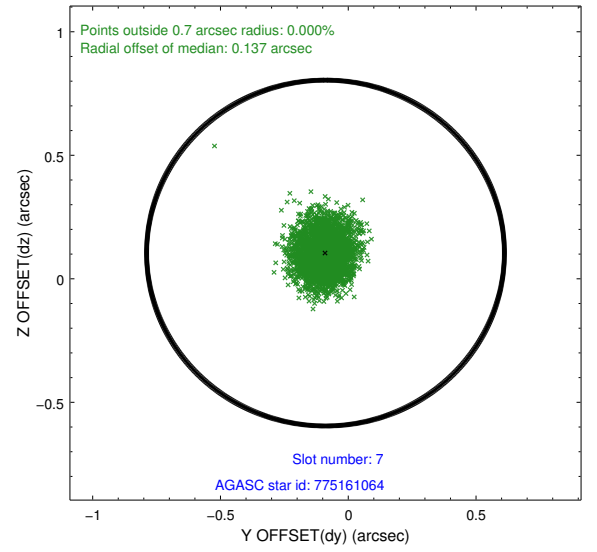
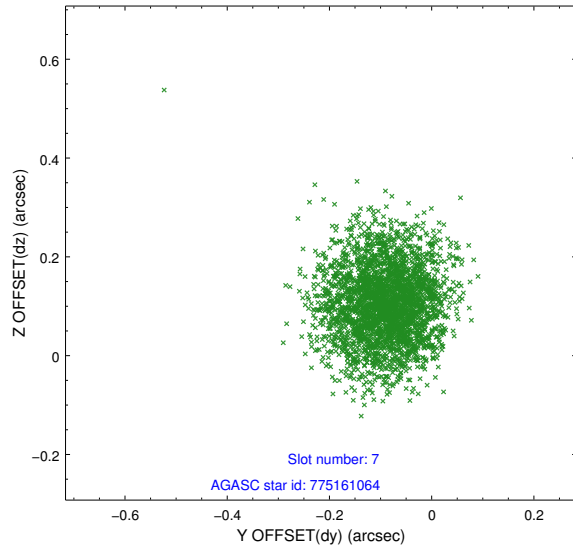


## 2.4.4 Slot 6



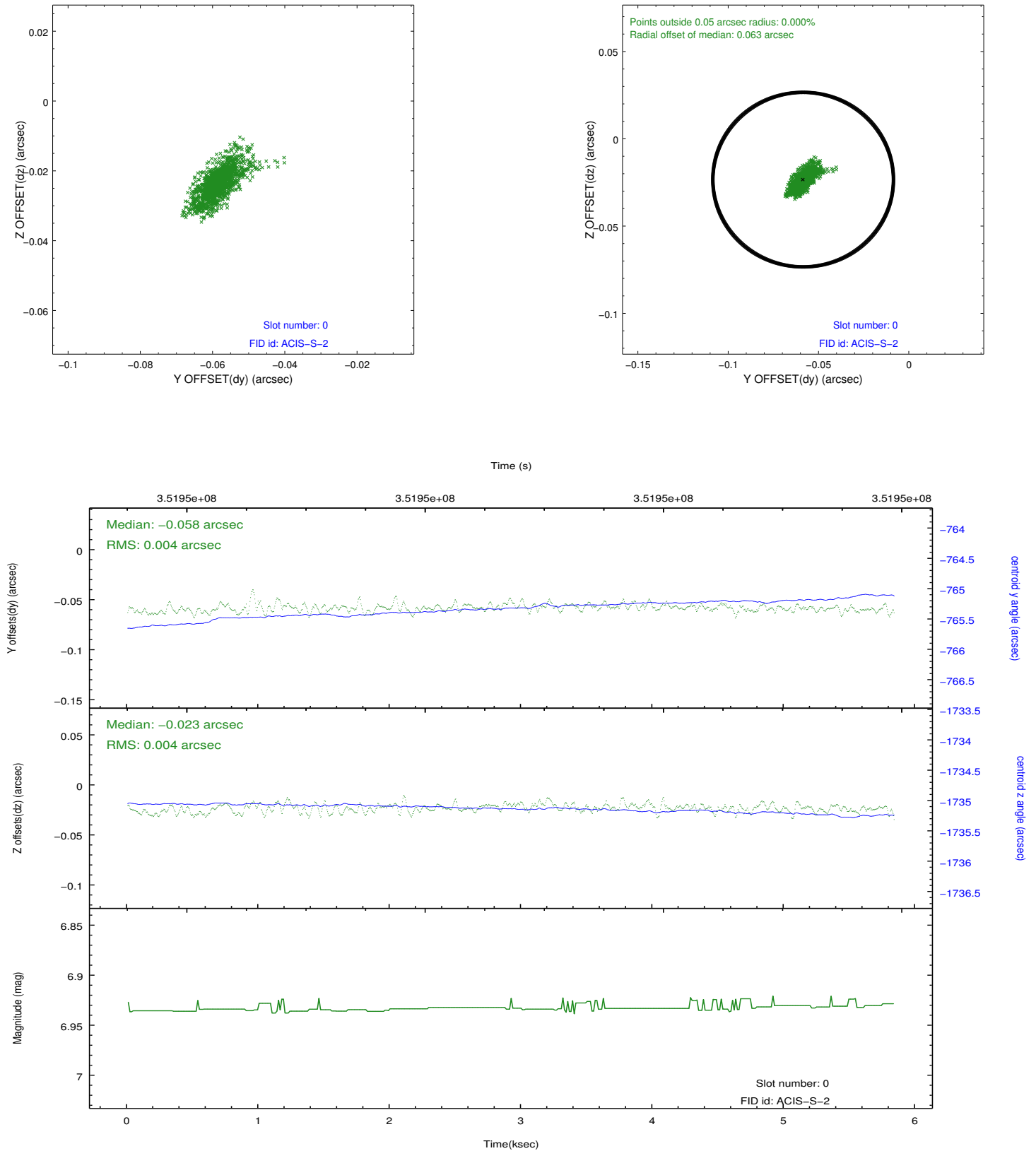


## 2.4.5 Slot 7

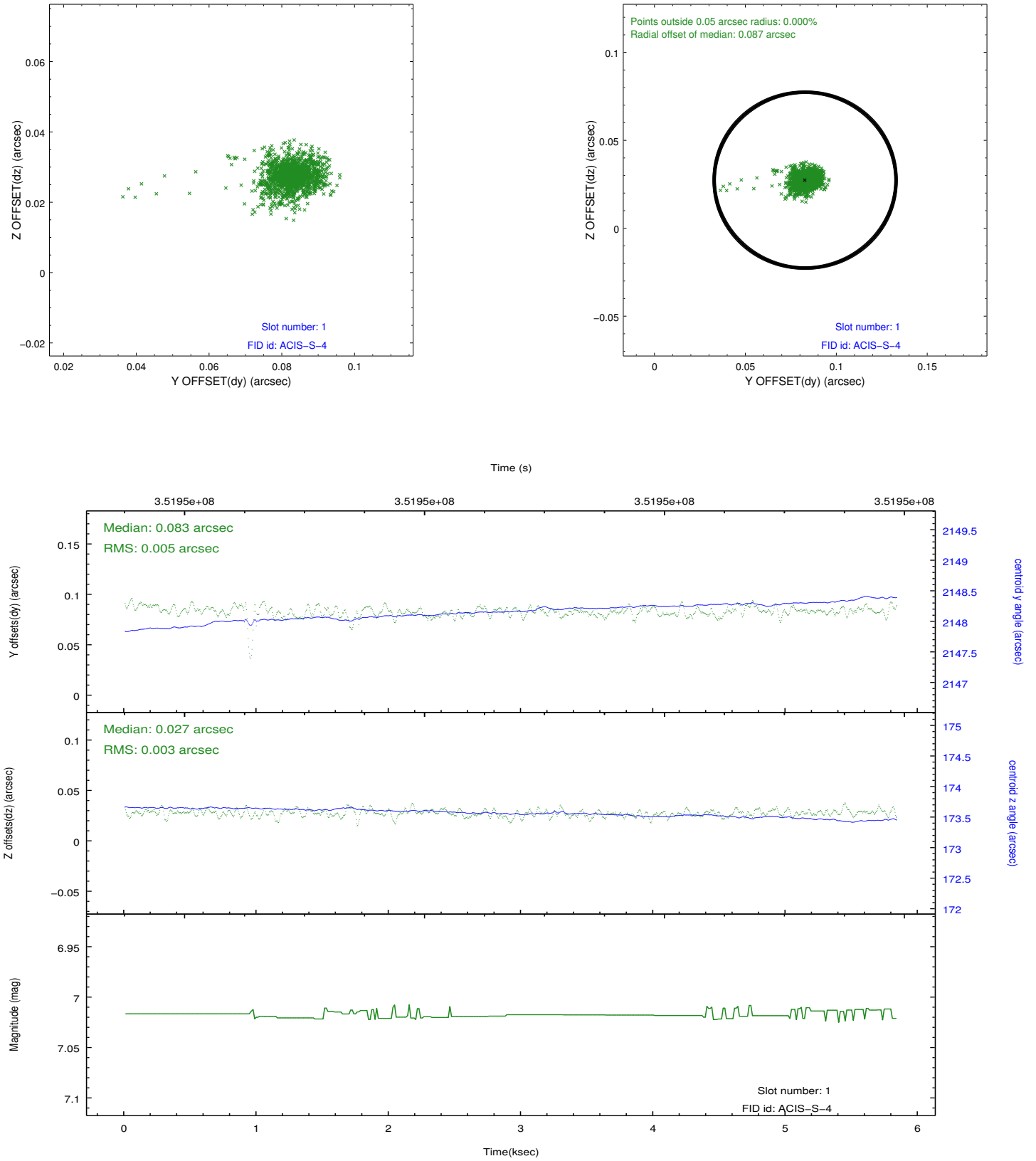


## 2.5 FID Slots

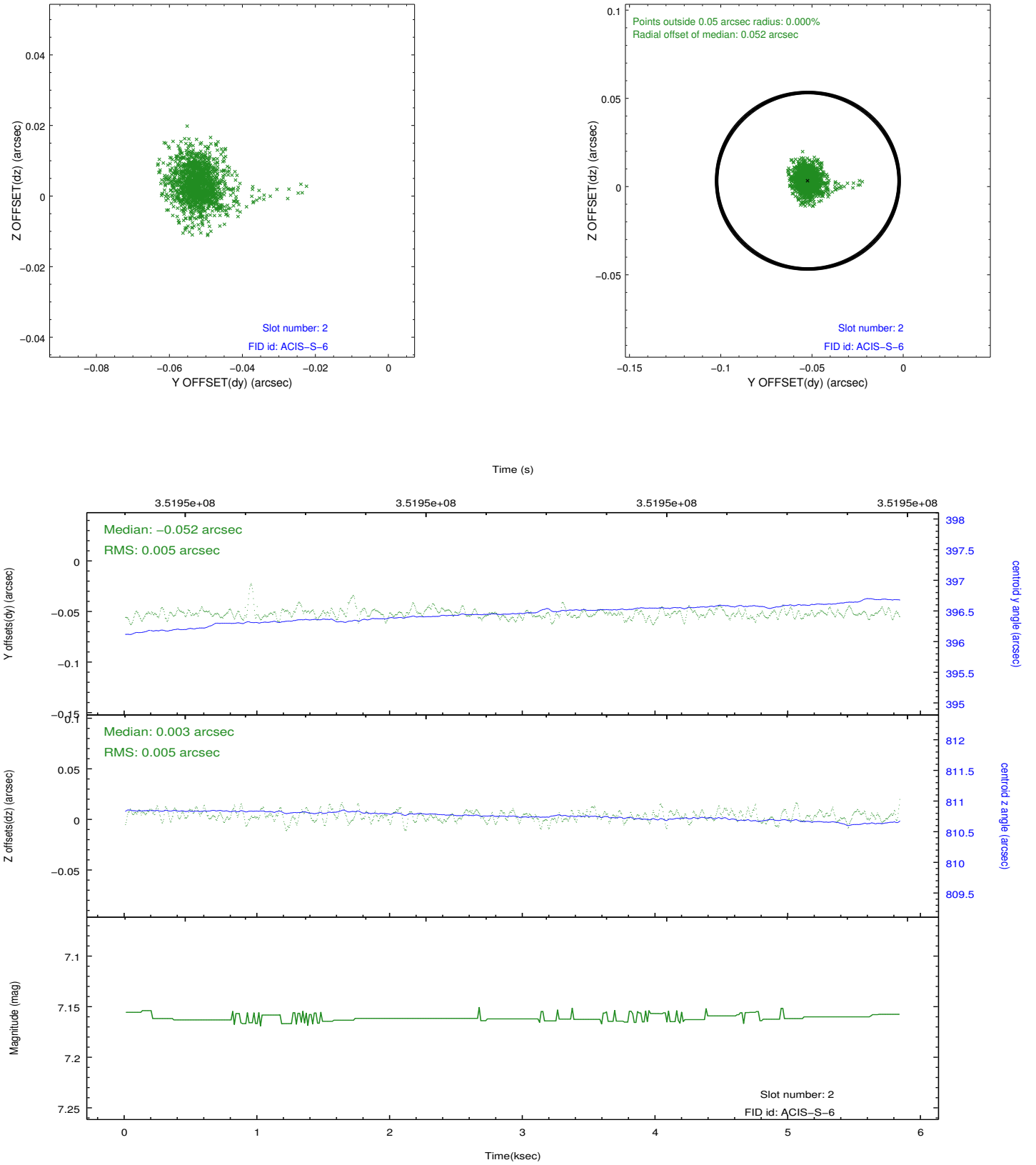
### 2.5.1 Slot 0



## 2.5.2 Slot 1



### 2.5.3 Slot 2



## A Summary

### A.1 Status

V&V Scientist	Jen Lauer
V&V Date (YYYY-MM-DD)	2012.06.05
V&V Edition	1
V&V Disposition and Status	OK
V&V Charge Time	5.83759965

### A.2 Comments

Roll preference met. Joint Proposal: HST