

V&V Reference Report

L2 ASCDS Version : 8.4.4

Observation 10353 - L2 Version 2
Chandra X-Ray Center

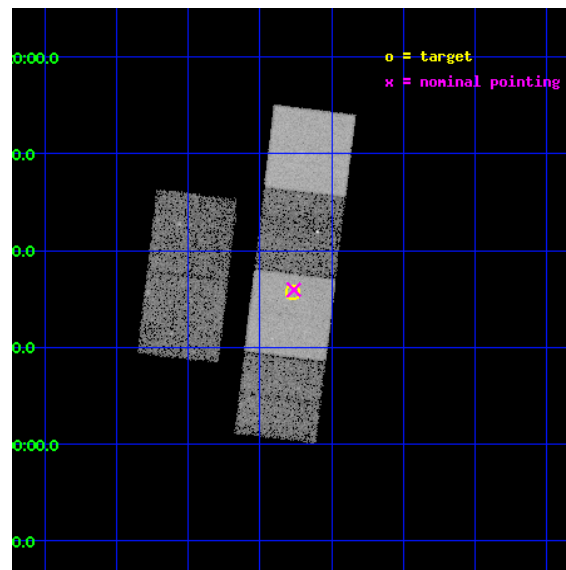
L2 Processing Date : Jun 3 2012

Contents

1	Front	2
2	OBI	3
2.1	OBI	3
2.1.1	Images	3
2.1.2	Bias	3
2.1.3	Parameters	4
2.1.4	Events	4
2.2	Compared Parameters	5
2.3	Aspect	6
2.4	Star Slots	9
2.4.1	Slot 3	9
2.4.2	Slot 4	10
2.4.3	Slot 5	11
2.4.4	Slot 6	12
2.4.5	Slot 7	13
2.5	FID Slots	14
2.5.1	Slot 0	14
2.5.2	Slot 1	15
2.5.3	Slot 2	16
A	Summary	17
A.1	Status	17
A.2	Comments	17

1 Front

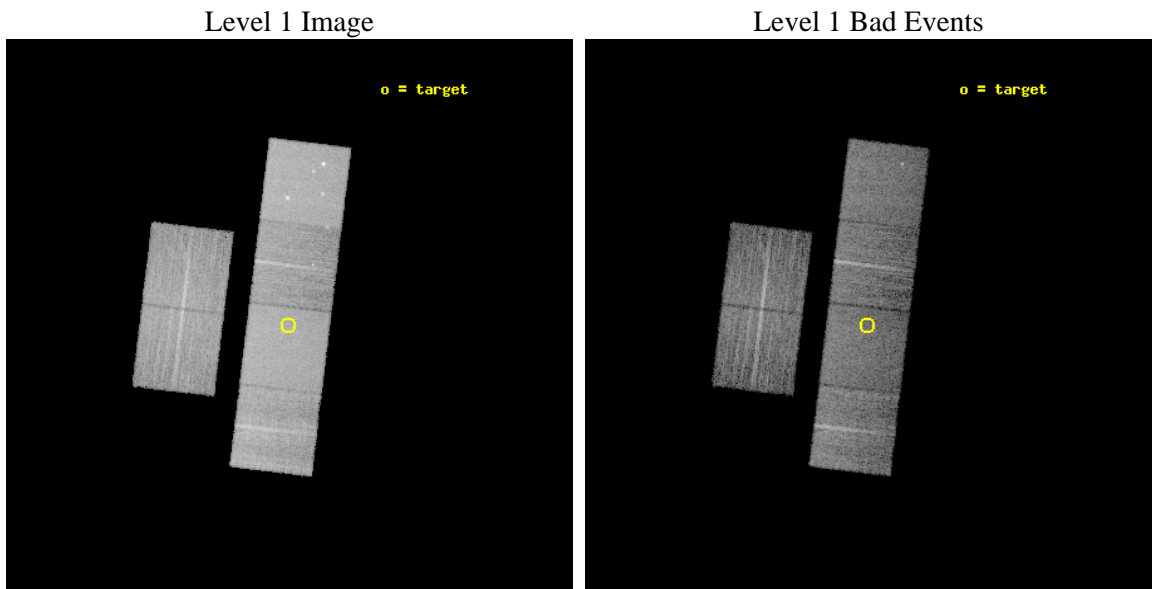
seq_num	701896	Sequence number
obs_id	10353	Observation id
title	Testing the Radiative-Driving Hypothesis of Quasar Outflows	Propos
observer	Dr. Rajib Ganguly	Principal investigator
object	SDSS J1520-0044	Source name
dtcycle	0	
cycle	P	events from which exps? Prim/Second/Both
ra_targ	230.06875	Observer's specified target RA [deg]
dec_targ	-0.737972	Observer's specified target Dec [deg]
ra_nom	230.06568433254	Nominal RA [deg]
dec_nom	-0.73416188285488	Nominal Dec [deg]
roll_nom	96.928172937454	Nominal Roll [deg]
revision	2	Processing version of data
ontime	7945.5999704599	Sum of GTIs [s]
livetime	7844.9879993681	Livetime [s]
ontime2	7945.5999704599	Sum of GTIs [s]
ontime3	7945.5999704599	Sum of GTIs [s]
ontime5	7945.5999704599	Sum of GTIs [s]
ontime6	7945.5999704599	Sum of GTIs [s]
ontime7	7945.5999704599	Sum of GTIs [s]
ontime8	7945.5999704599	Sum of GTIs [s]
l2events	141138	Number of level 2 events



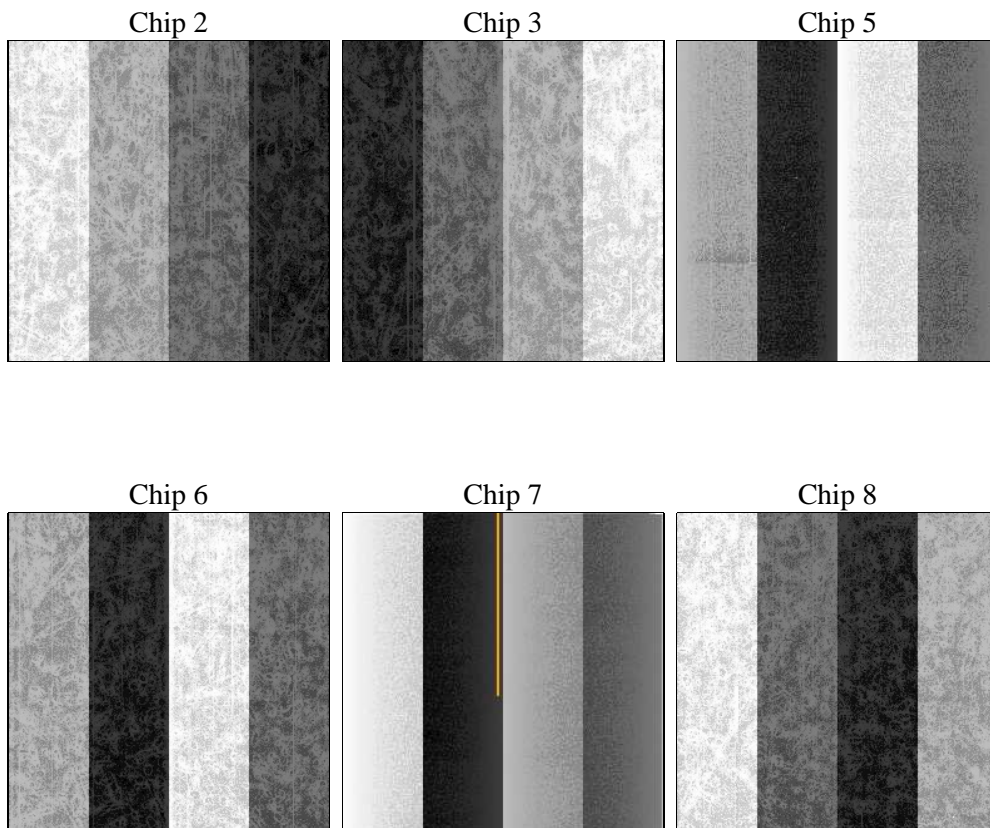
2 OBI

2.1 OBI

2.1.1 Images



2.1.2 Bias



2.1.3 Parameters

obi_num	0	Obi number	sched_exp_time	8000.363000	[s] Scheduled observation exposure time
ascdsver	8.4.4	Processing system revision	ontime	7945.5999704599	Sum of GTIs [s]
caldsver	4.4.9	 	ontime2	7945.5999704599	Sum of GTIs [s]
date	2012-06-03T08:17:28	Date and time of file creation	ontime3	7945.5999704599	Sum of GTIs [s]
revision	2	Processing version of data	ontime5	7945.5999704599	Sum of GTIs [s]
			ontime6	7945.5999704599	Sum of GTIs [s]
			ontime7	7945.5999704599	Sum of GTIs [s]
			ontime8	7945.5999704599	Sum of GTIs [s]
			l1events	609708	Number of level 1 events

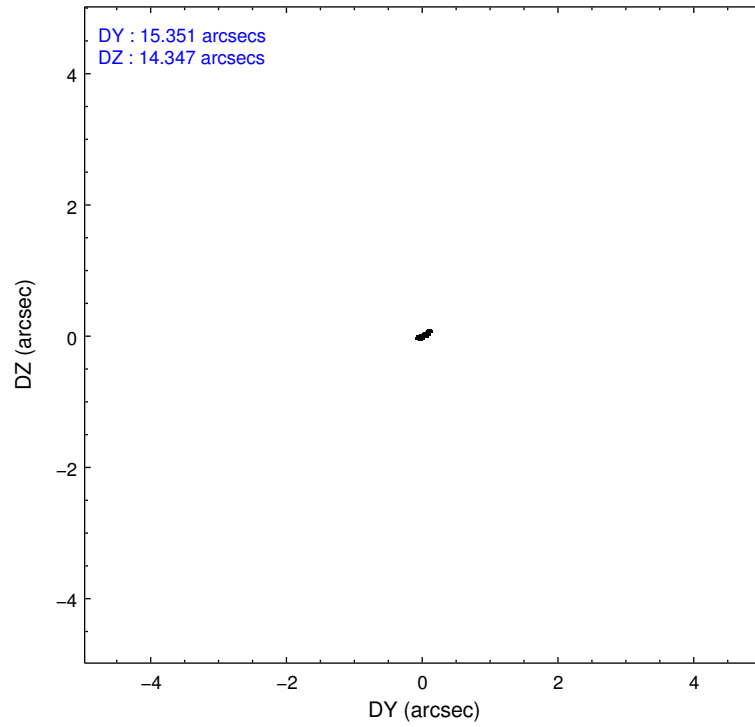
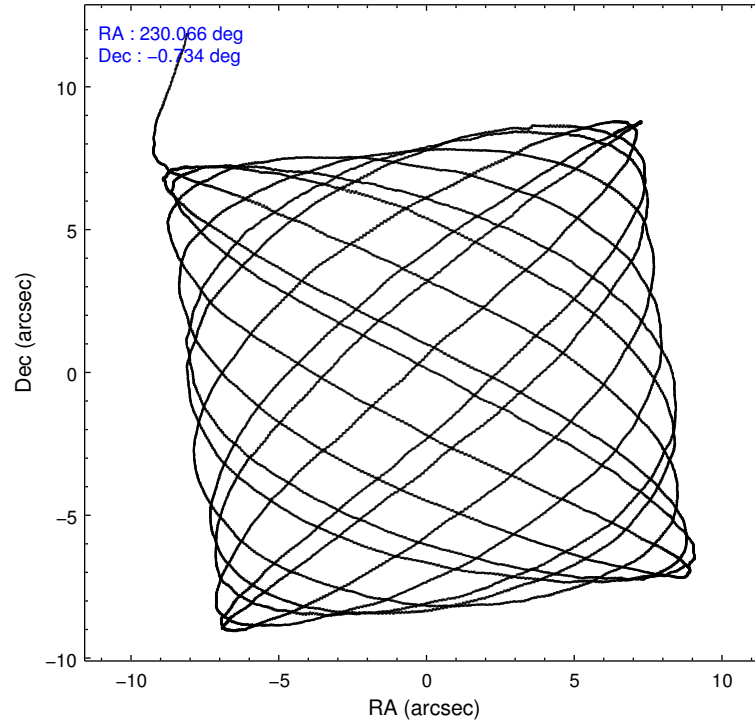
2.1.4 Events

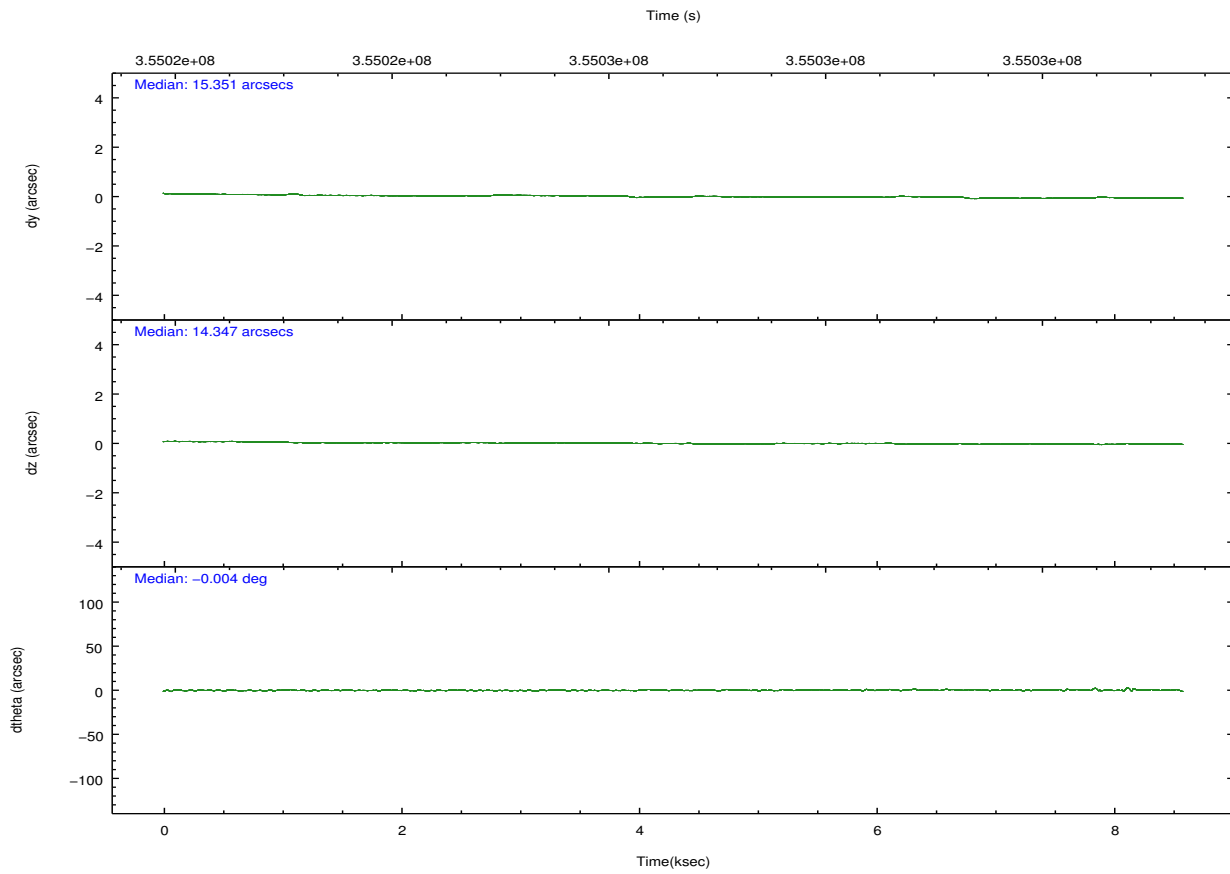
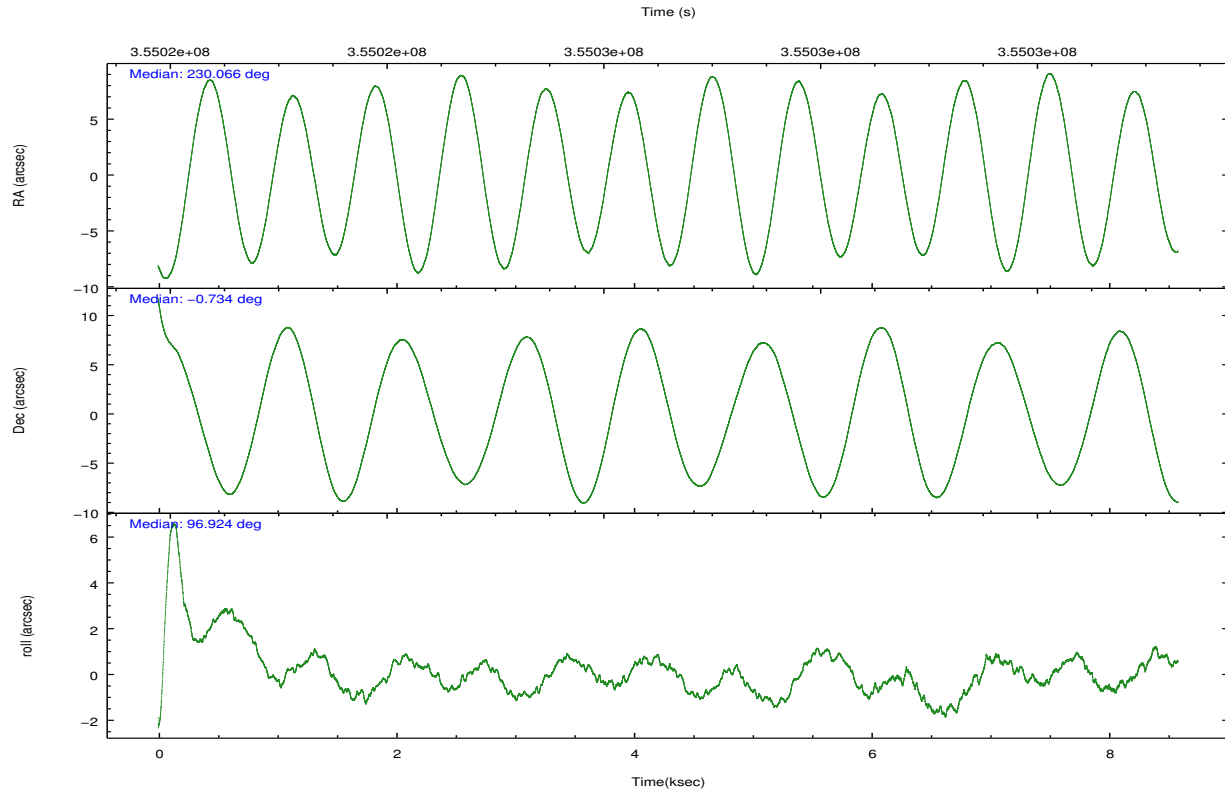
	ccd 2	ccd 3	ccd 5	ccd 6	ccd 7	ccd 8		ccd 2	ccd 3	ccd 5	ccd 6	ccd 7	ccd 8
level 1 events	84360	84572	132831	82430	117363	108152	grade 0 events	4186	4507	7162	4328	4291	8044
rejected events	74534	74364	70959	71821	68687	83347		4%	5%	5%	5%	3%	7%
rejected %	88%	87%	53%	87%	58%	77%	grade 1 events	54	66	506	49	127	77
								0%	0%	0%	0%	0%	0%
							grade 2 events	2131	1954	18713	2318	10003	5456
								2%	2%	14%	2%	8%	5%
							grade 3 events	871	952	2105	949	4075	2645
								1%	1%	1%	1%	3%	2%
							grade 4 events	922	984	1998	932	4199	2484
								1%	1%	1%	1%	3%	2%
							grade 5 events	3599	3957	9079	4102	11156	5424
								4%	4%	6%	4%	9%	5%
							grade 6 events	1721	1813	31916	2084	26122	6183
								2%	2%	24%	2%	22%	5%
							grade 7 events	70876	70339	61352	67668	57390	77839
								84%	83%	46%	82%	48%	71%

2.2 Compared Parameters

Parameter	Planned	Actual	Parameter	Planned	Actual
Instrument	ACIS	ACIS	Obspar format version number	7	7
Detector	ACIS-235678	ACIS-235678	Obspar file type	PREDICTED	ACTUAL
Grating	NONE	NONE	Obspar update status	NONE	UPDATED
Data mode	FAINT	FAINT	CCD I0 on	N	N
Observation mode	POINTING	POINTING	CCD I1 on	N	N
[deg] Pointing RA	230.082448	230.0656843325358	CCD I2 on	O1	Y
[deg] Pointing Dec	-0.755818	-0.7341618828548786	CCD I3 on	O2	Y
[deg] Pointing Roll	96.771769	96.92817293745352	CCD S0 on	N	N
[mm] SIM focus pos	-0.684267	-0.6828225247311905	CCD S1 on	Y	Y
[mm] SIM defocus	0	0.001444936568705701	CCD S2 on	Y	Y
[mm] SIM translation stage pos	-190.132523	-190.1425803651734	CCD S3 on	Y	Y
[mm] SIM translation stage offset	0	0.01005778216563158	CCD S4 on	Y	Y
[s] Observation start time (MET)	355022878.184000	355021713.0003	CCD S5 on	N	N
Observation start date	2009-04-02T01:26:52	2009-04-02T01:08:33	Number of optional ACIS chips dropped	0	0
[s] Observation end time (MET)	355030878.184000	355031098.92576	On-chip summing requested	N	N
Observation end date	2009-04-02T03:40:12	2009-04-02T03:44:58	Subarray requested	NONE	NONE
Read mode	TIMED	TIMED	Alternating exposures requested	N	N
			[s] Primary exposure time	0.000000	3.2

2.3 Aspect



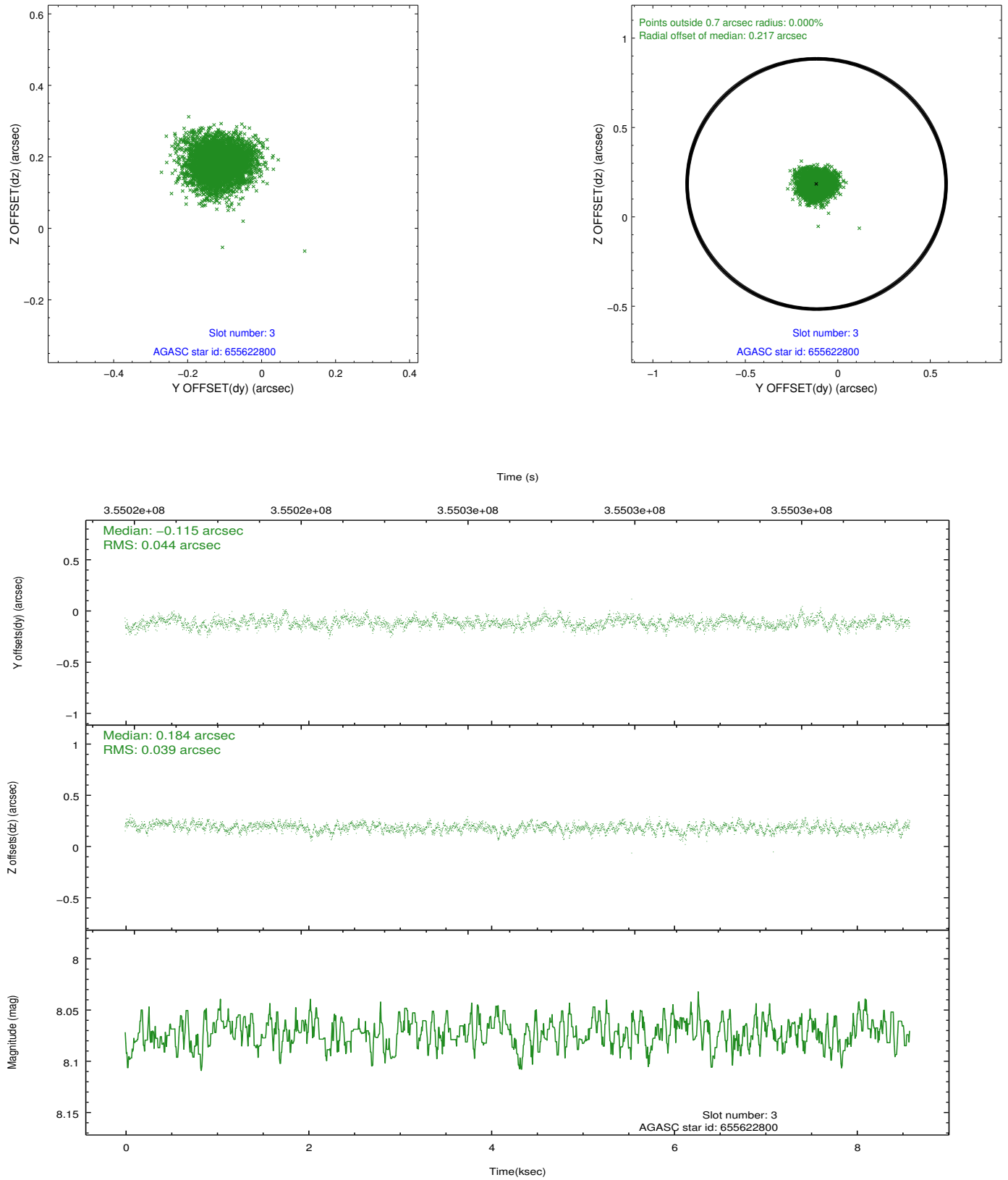


Slot Statistics

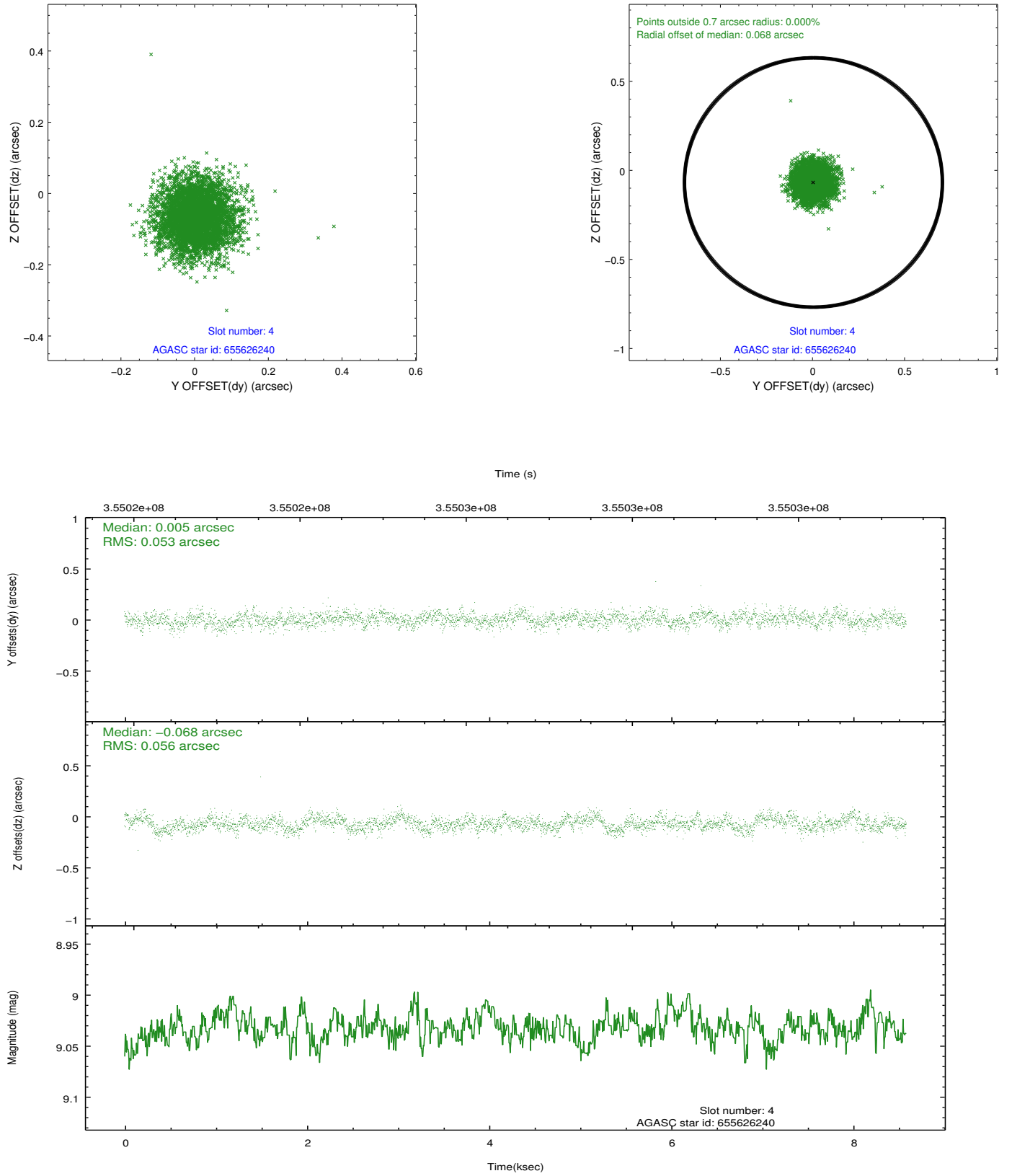
slot	status	id	mag	n_pts	med_dy	med_dz	dr1	dr2	ra	dec	mean_y	mean_z
0	FID	ACIS-S-2	6.96	2094	-0.100	-0.056	0.008	0.017	0.000000	0.000000	-768.44	-1735.72
1	FID	ACIS-S-4	7.05	2094	0.222	0.063	0.007	0.017	0.000000	0.000000	2144.87	172.22
2	FID	ACIS-S-5	7.08	2094	-0.154	0.002	0.008	0.017	0.000000	0.000000	-1820.51	166.55
3	GUIDE	655622800	8.07	4188	-0.115	0.184	0.062	0.102	230.279261	-0.231364	1791.22	-926.18
4	GUIDE	655626240	9.03	4186	0.005	-0.068	0.082	0.131	229.662640	-0.167783	2280.60	1251.35
5	GUIDE	655627448	7.74	4187	-0.026	-0.045	0.061	0.099	229.614962	-0.786210	89.41	1684.17
6	GUIDE	655627768	9.10	4183	-0.017	-0.102	0.097	0.156	229.635829	-0.597225	756.48	1528.96
7	GUIDE	655627912	8.75	4185	0.154	0.033	0.083	0.133	230.112927	-1.179126	-1526.19	71.14

2.4 Star Slots

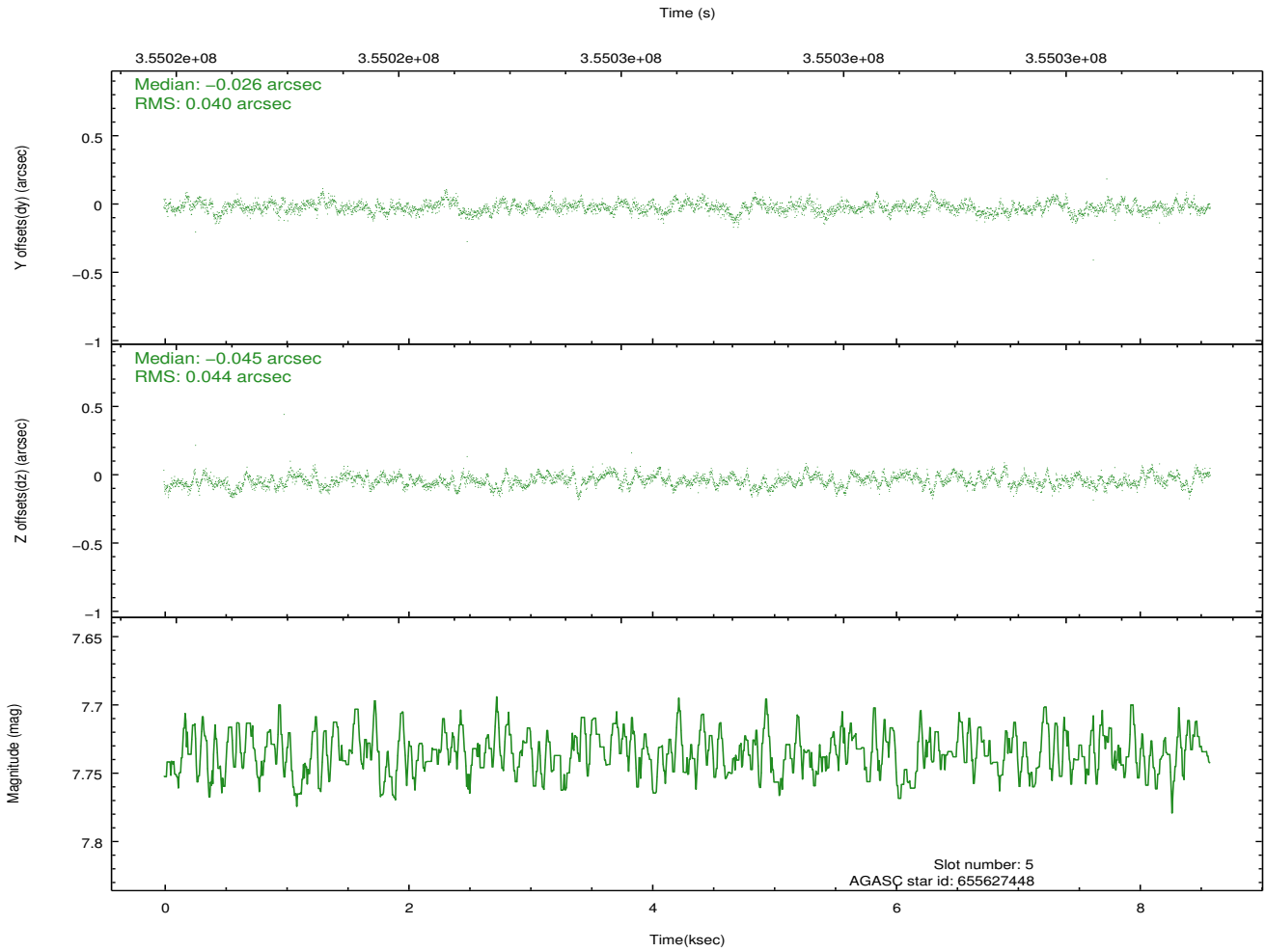
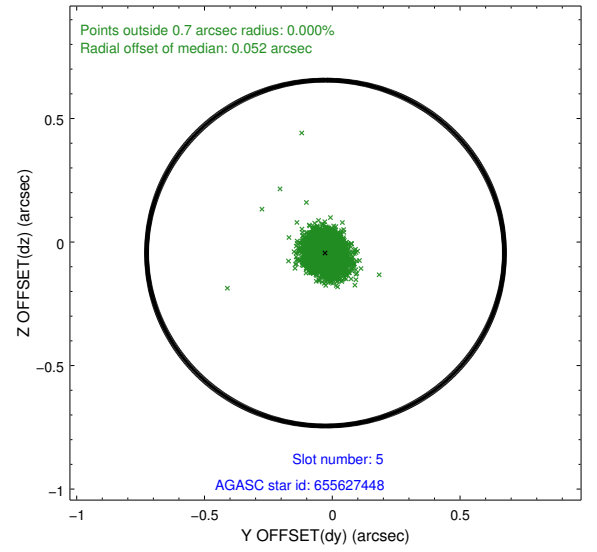
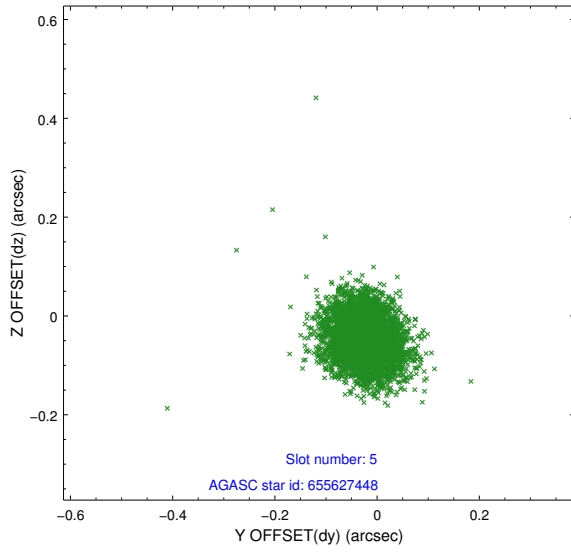
2.4.1 Slot 3



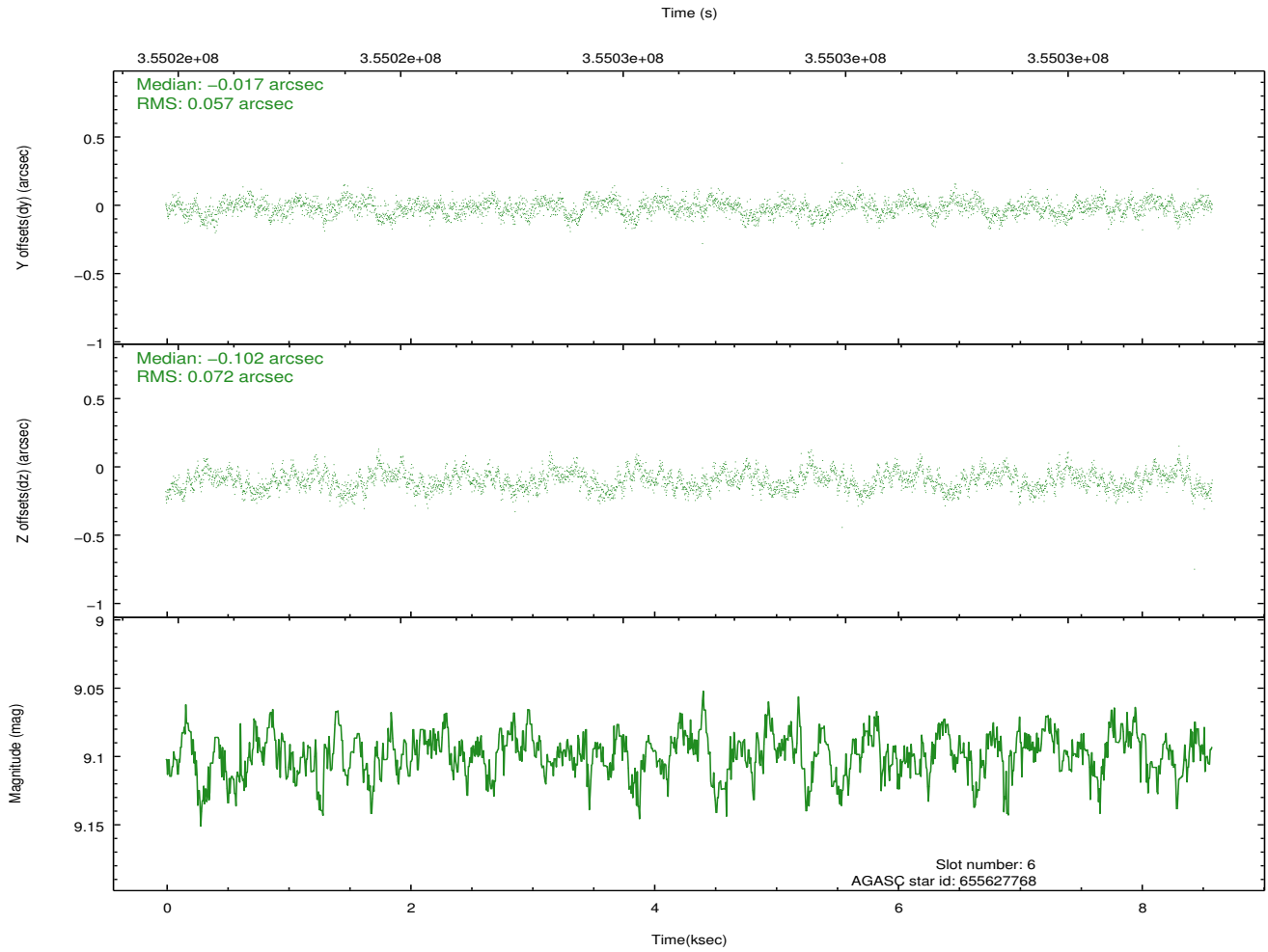
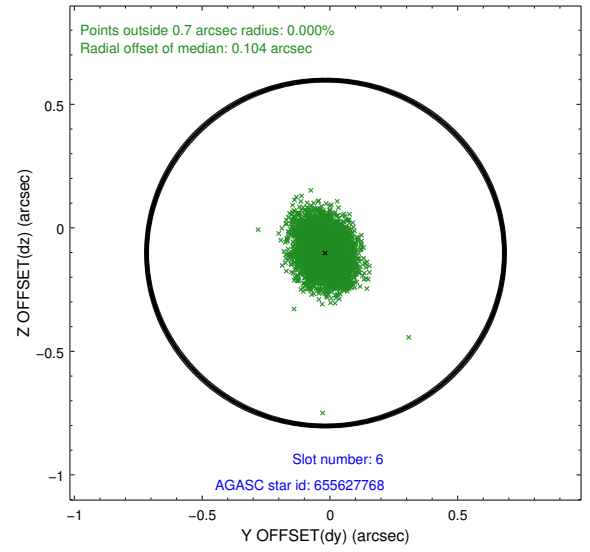
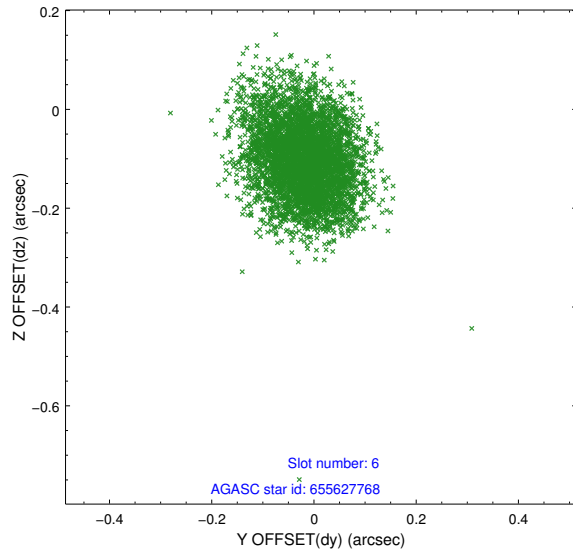
2.4.2 Slot 4



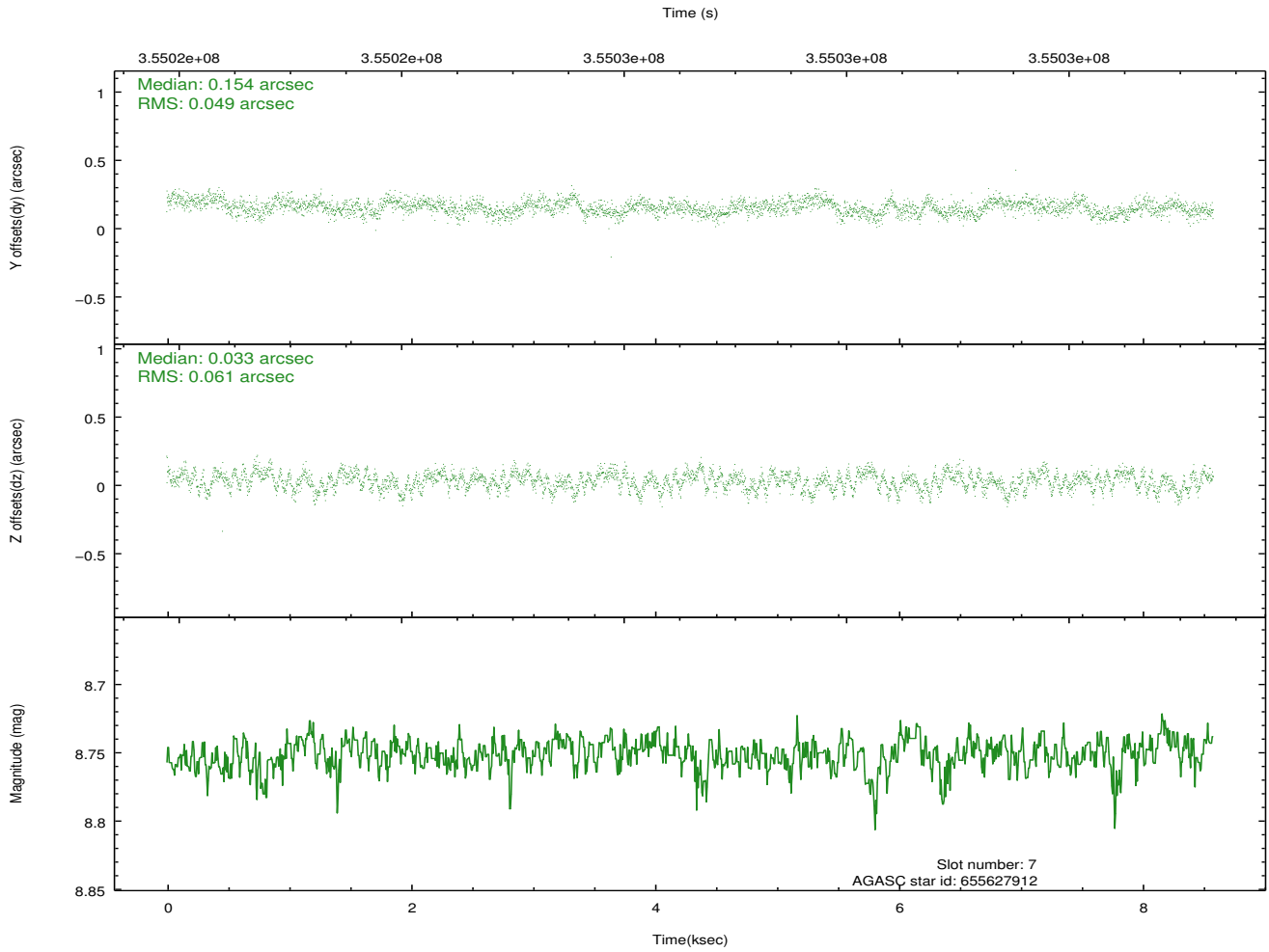
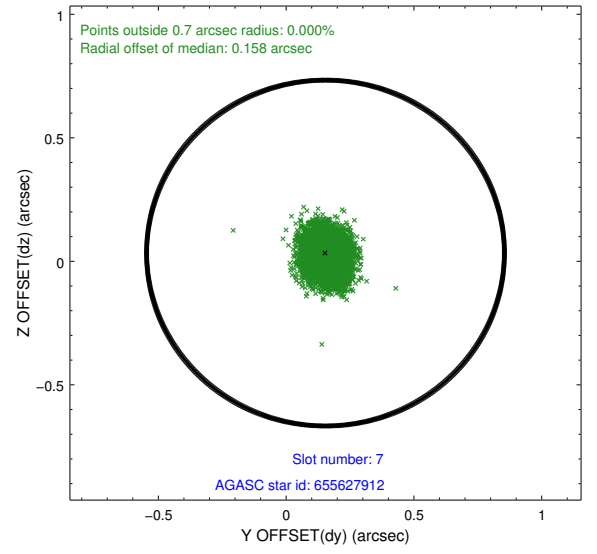
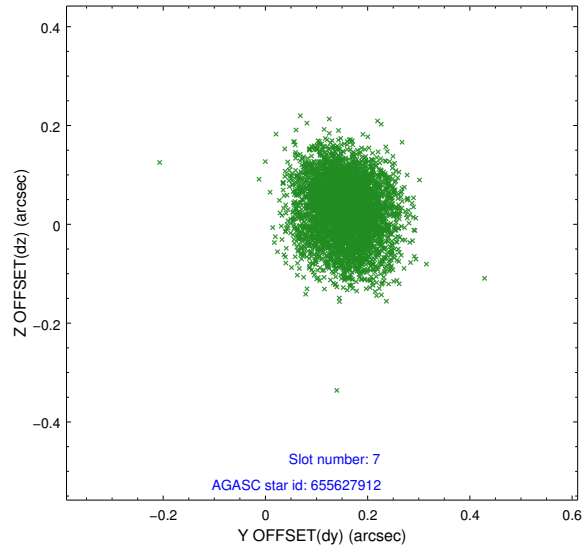
2.4.3 Slot 5



2.4.4 Slot 6

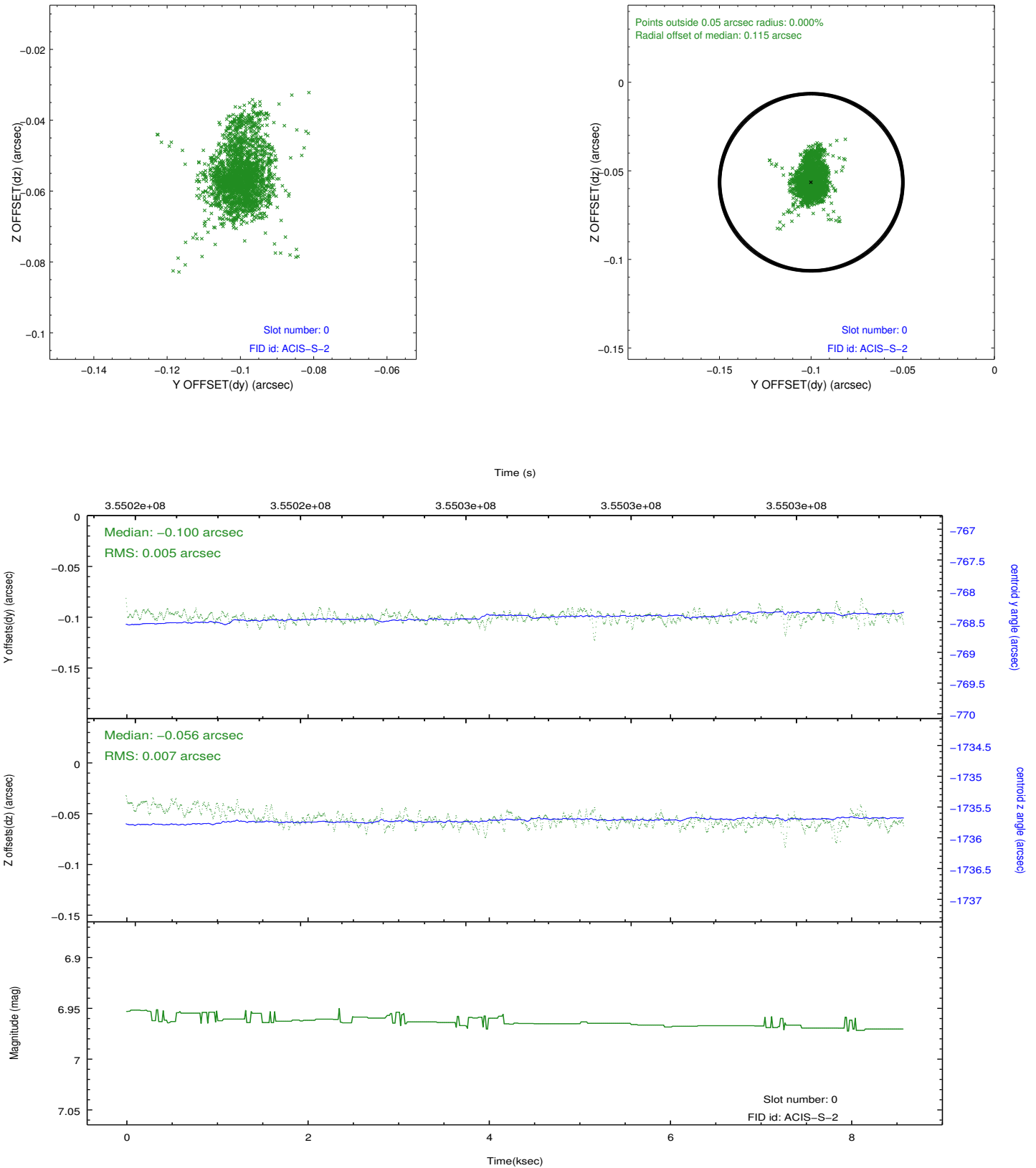


2.4.5 Slot 7

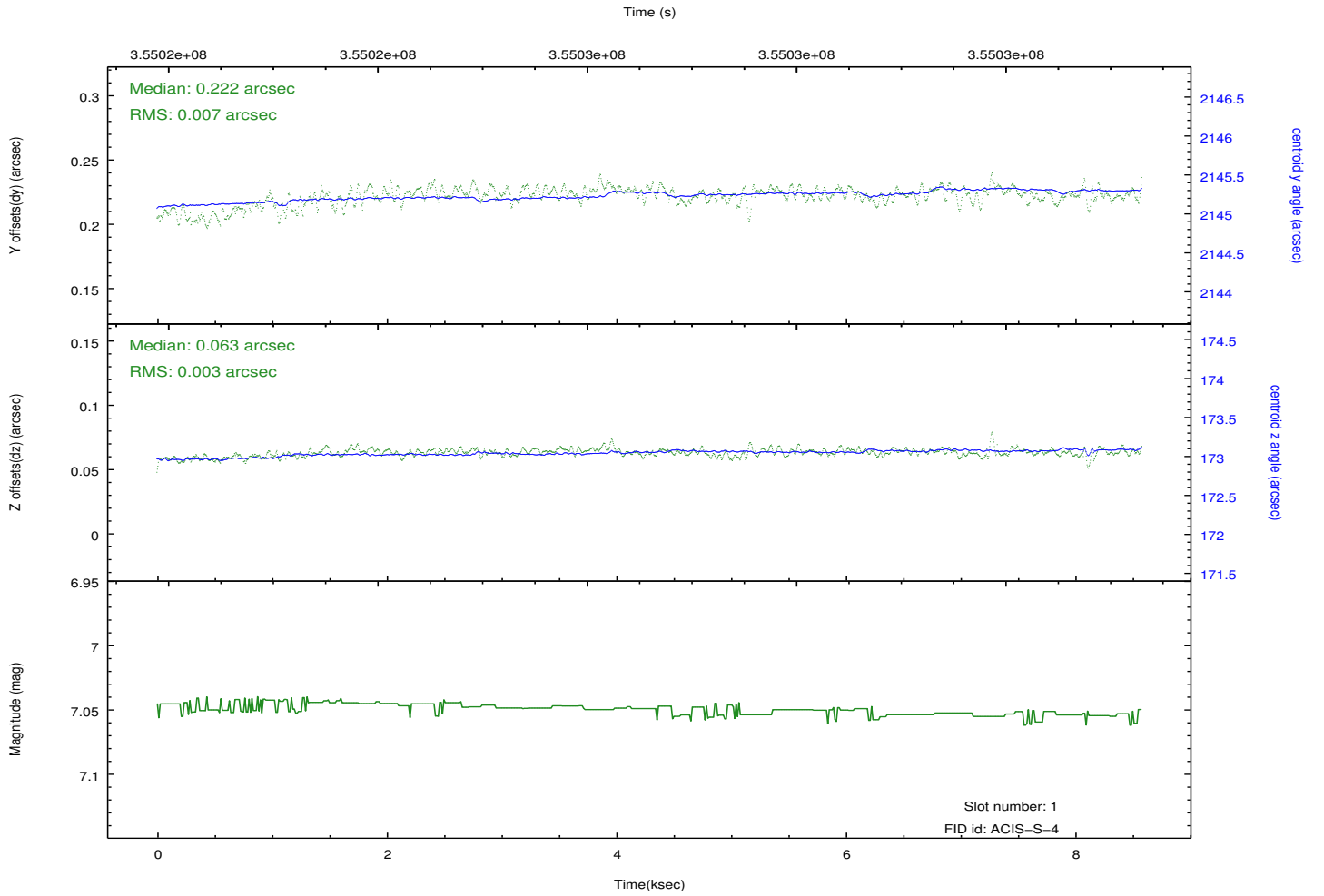
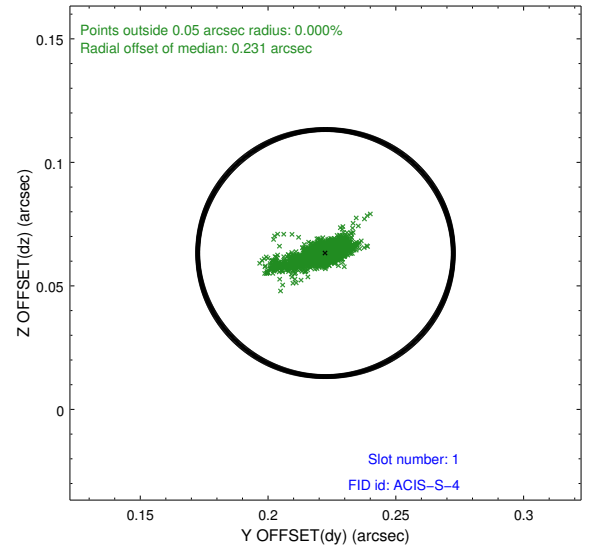
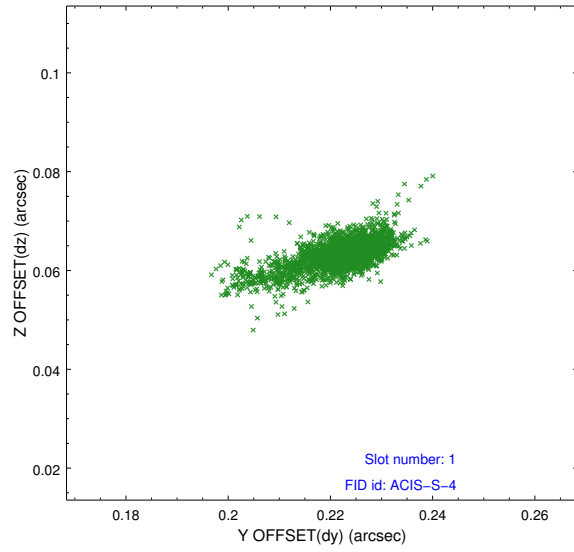


2.5 FID Slots

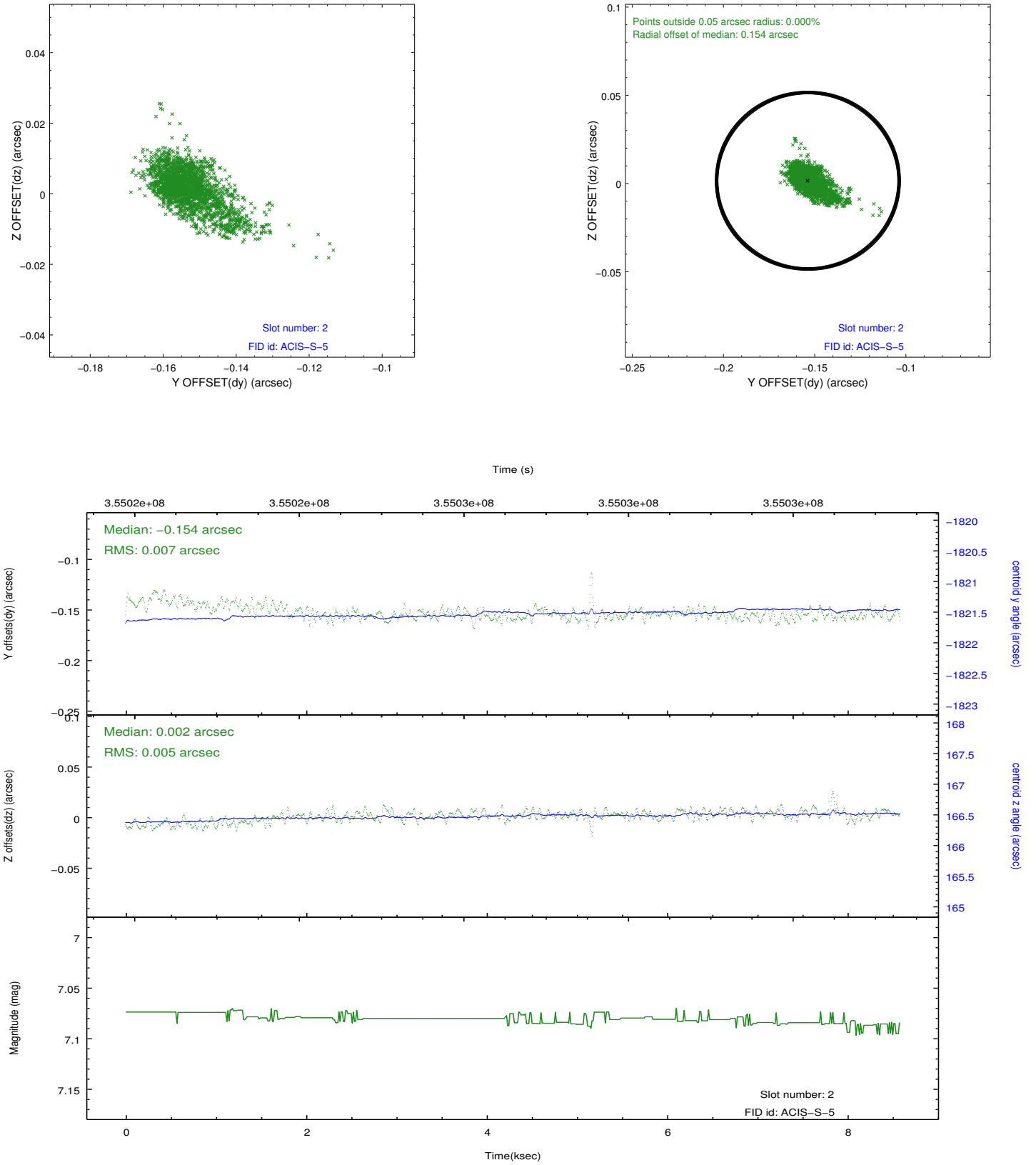
2.5.1 Slot 0



2.5.2 Slot 1



2.5.3 Slot 2



A Summary

A.1 Status

V&V Scientist	Jen Lauer
V&V Date (YYYY-MM-DD)	2012.06.07
V&V Edition	1
V&V Disposition and Status	OK
V&V Charge Time	7.94559997

A.2 Comments