

V&V Reference Report

L2 ASCDS Version : 8.4.4

Observation 10265 - L2 Version 2
Chandra X-Ray Center

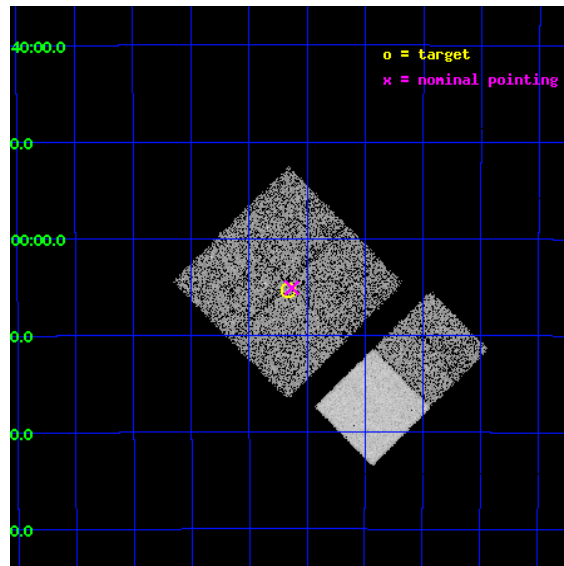
L2 Processing Date : Jun 3 2012

Contents

1	Front	2
2	OBI	3
2.1	OBI	3
2.1.1	Images	3
2.1.2	Bias	3
2.1.3	Parameters	4
2.1.4	Events	4
2.2	Compared Parameters	5
2.3	Aspect	6
2.4	Star Slots	9
2.4.1	Slot 3	9
2.4.2	Slot 4	10
2.4.3	Slot 5	11
2.4.4	Slot 6	12
2.4.5	Slot 7	13
2.5	FID Slots	14
2.5.1	Slot 0	14
2.5.2	Slot 1	15
2.5.3	Slot 2	16
A	Summary	17
A.1	Status	17
A.2	Comments	17

1 Front

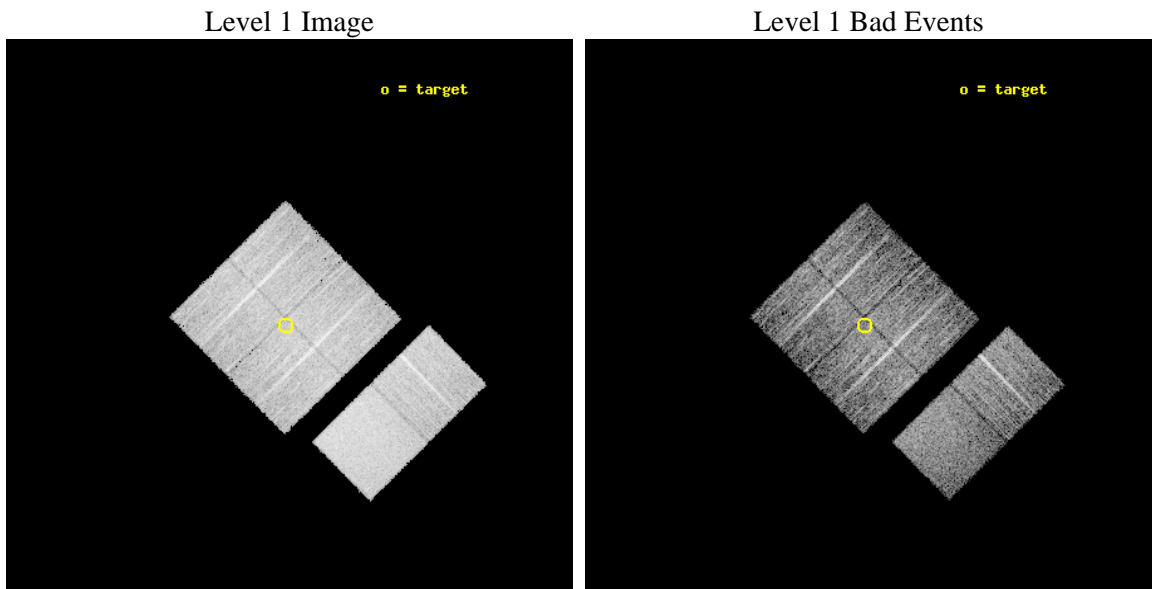
seq_num	701808	Sequence number
obs_id	10265	Observation id
title	Zeroing in on the sources of Ultrahigh Energy Cosmic Rays	Proposal
observer	Prof. Glennys Farrar	Principal investigator
object	IC 5169	Source name
dtcycle	0	
cycle	P	events from which exps? Prim/Second/Both
ra_targ	332.541667	Observer's specified target RA [deg]
dec_targ	-36.088417	Observer's specified target Dec [deg]
ra_nom	332.53279250281	Nominal RA [deg]
dec_nom	-36.084796774888	Nominal Dec [deg]
roll_nom	135.36802189472	Nominal Roll [deg]
revision	2	Processing version of data
ontime	5123.1999809742	Sum of GTIs [s]
livetime	5058.3269379944	Livetime [s]
ontime0	5123.1999809742	Sum of GTIs [s]
ontime1	5123.1999809742	Sum of GTIs [s]
ontime2	5123.1999809742	Sum of GTIs [s]
ontime3	5123.1999809742	Sum of GTIs [s]
ontime6	5123.1999809742	Sum of GTIs [s]
ontime7	5123.1999809742	Sum of GTIs [s]
l2events	58689	Number of level 2 events



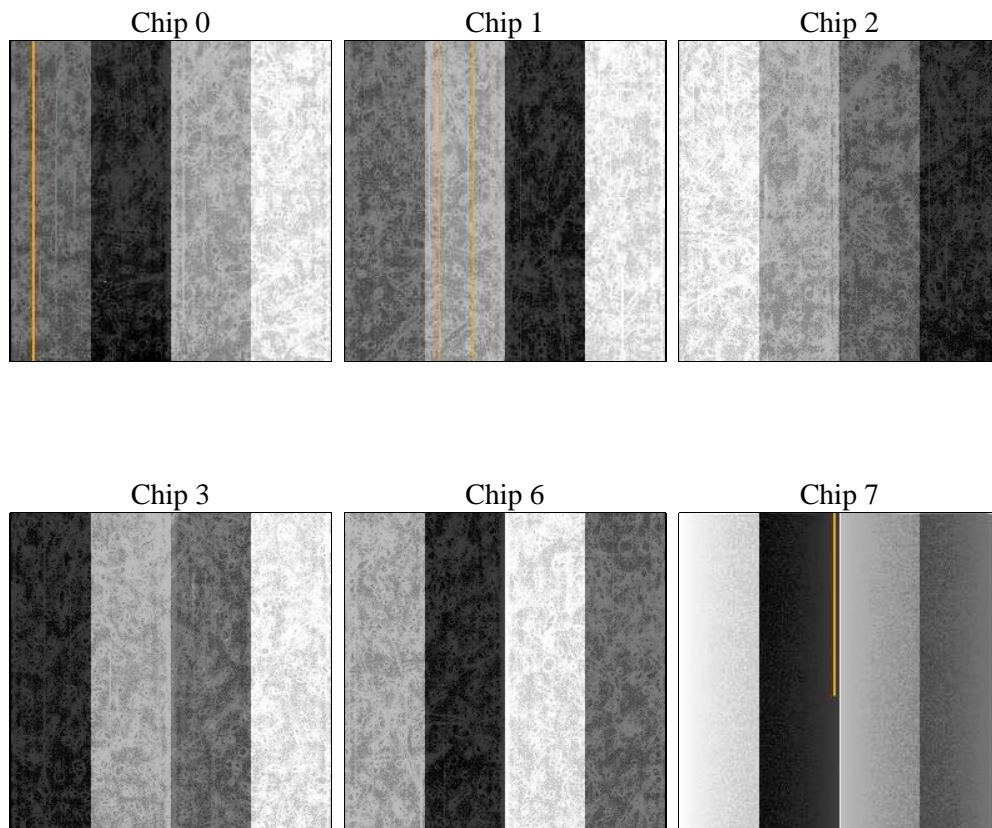
2 OBI

2.1 OBI

2.1.1 Images



2.1.2 Bias



2.1.3 Parameters

obi_num	0	Obi number	sched_exp_time	5000.217000	[s] Scheduled observation exposure time
ascdsver	8.4.4	Processing system revision	ontime	5123.1999809742	Sum of GTIs [s]
caldsver	4.4.9	 	ontime0	5123.1999809742	Sum of GTIs [s]
date	2012-06-03T05:46:55	Date and time of file creation	ontime1	5123.1999809742	Sum of GTIs [s]
revision	2	Processing version of data	ontime2	5123.1999809742	Sum of GTIs [s]
			ontime3	5123.1999809742	Sum of GTIs [s]
			ontime6	5123.1999809742	Sum of GTIs [s]
			ontime7	5123.1999809742	Sum of GTIs [s]
			l1events	386340	Number of level 1 events

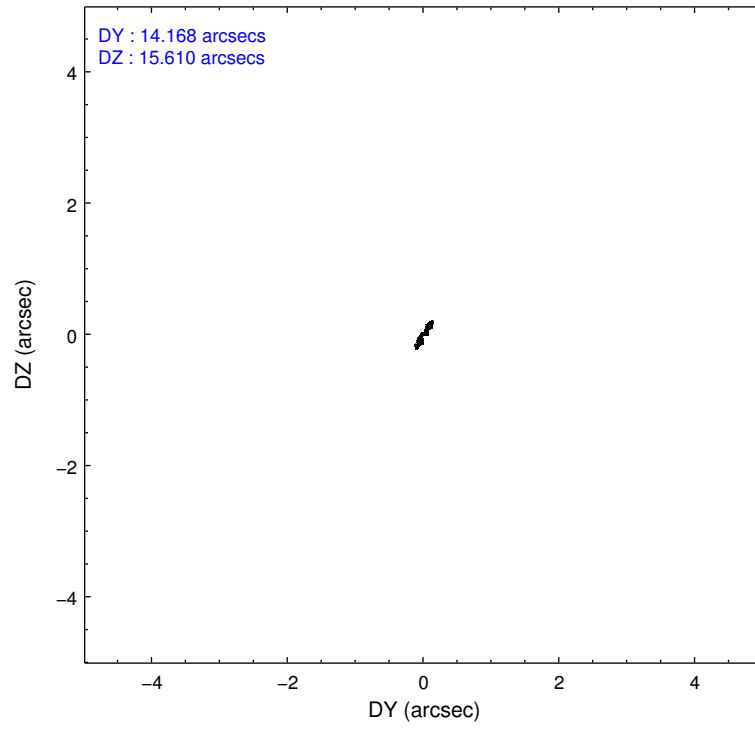
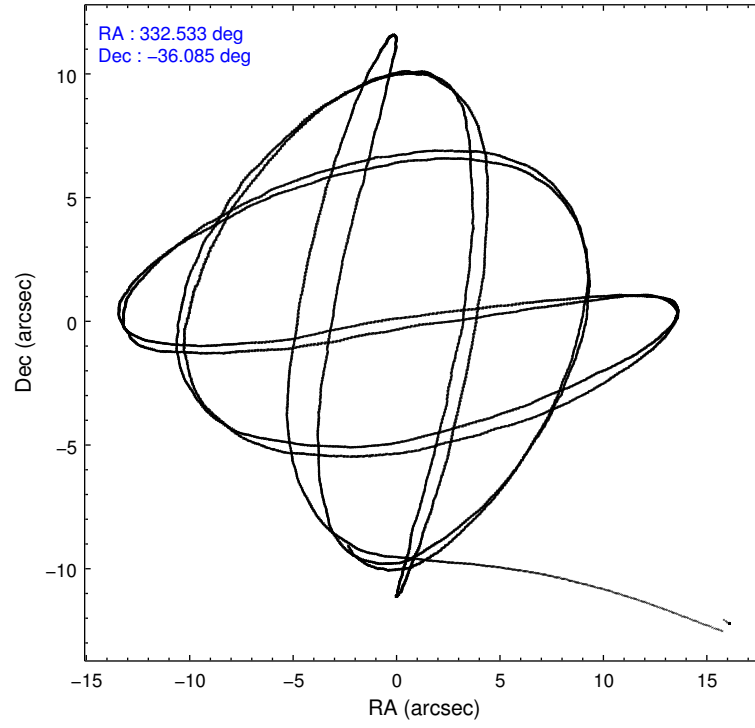
2.1.4 Events

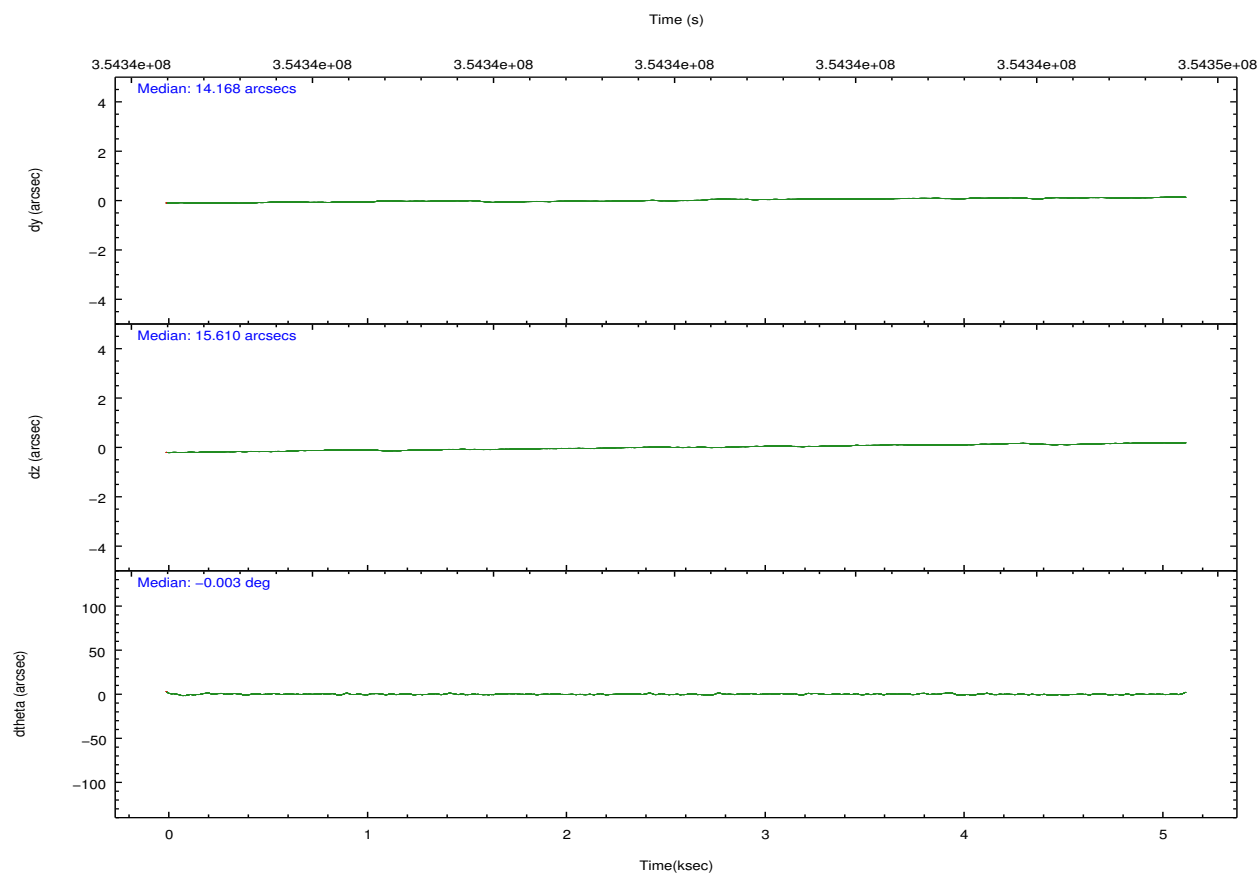
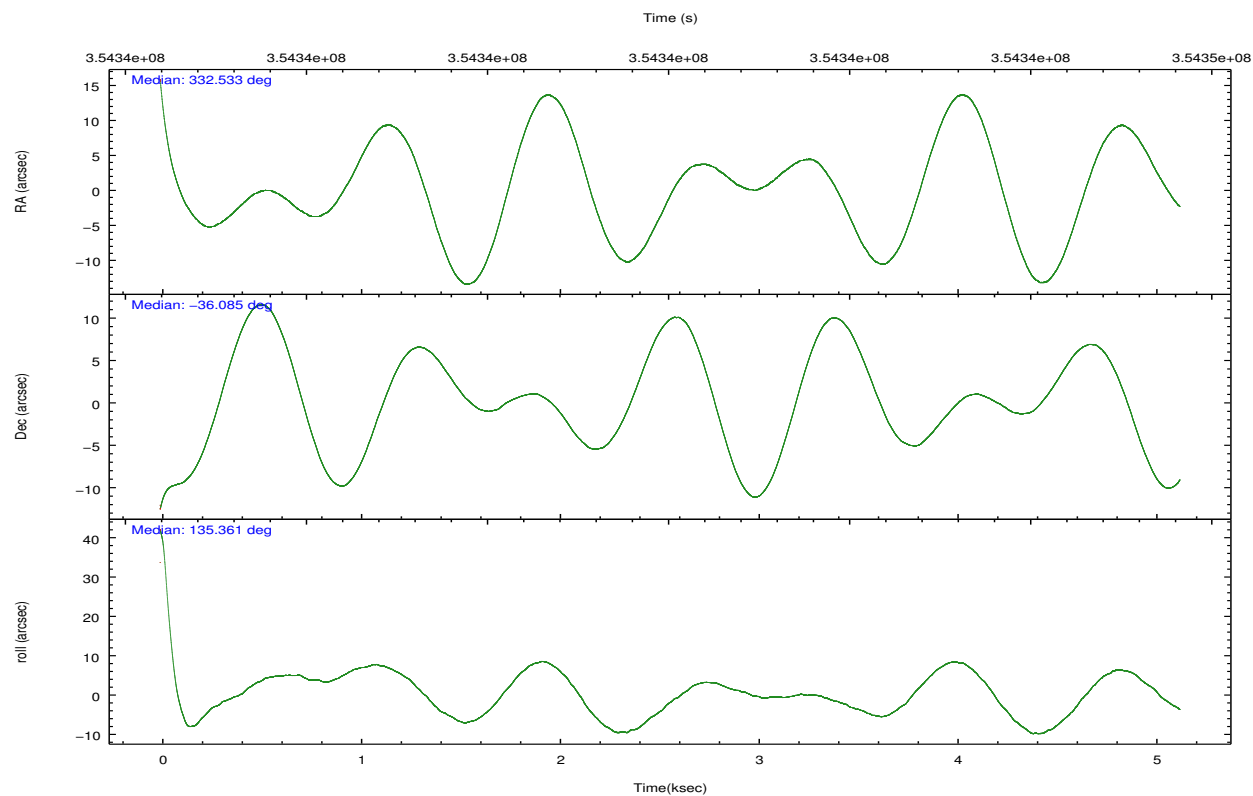
	ccd 0	ccd 1	ccd 2	ccd 3	ccd 6	ccd 7		ccd 0	ccd 1	ccd 2	ccd 3	ccd 6	ccd 7
level 1 events	57215	57540	60319	60455	63592	87219	grade 0 events	3299	3202	3249	3367	3078	3053
rejected events	50606	50489	54058	53917	57021	56385		5%	5%	5%	5%	4%	3%
rejected %	88%	87%	89%	89%	89%	64%	grade 1 events	46	38	37	32	36	86
								0%	0%	0%	0%	0%	0%
							grade 2 events	1737	1936	1609	1615	1732	7545
								3%	3%	2%	2%	2%	8%
							grade 3 events	707	731	647	705	711	2989
								1%	1%	1%	1%	1%	3%
							grade 4 events	694	757	689	691	700	2992
								1%	1%	1%	1%	1%	3%
							grade 5 events	2712	2836	2525	2975	3031	8191
								4%	4%	4%	4%	4%	9%
							grade 6 events	1388	1618	1289	1337	1592	19781
								2%	2%	2%	2%	2%	22%
							grade 7 events	46632	46422	50274	49733	52712	42582
								81%	80%	83%	82%	82%	48%

2.2 Compared Parameters

Parameter	Planned	Actual	Parameter	Planned	Actual
Instrument	ACIS	ACIS	Obspar format version number	7	7
Detector	ACIS-012367	ACIS-012367	Obspar file type	PREDICTED	ACTUAL
Grating	NONE	NONE	Obspar update status	NONE	UPDATED
Data mode	FAINT	FAINT	CCD I0 on	Y	Y
Observation mode	POINTING	POINTING	CCD I1 on	Y	Y
[deg] Pointing RA	332.565740	332.532792502807	CCD I2 on	Y	Y
[deg] Pointing Dec	-36.091539	-36.08479677488834	CCD I3 on	Y	Y
[deg] Pointing Roll	135.178657	135.3680218947154	CCD S0 on	N	N
[mm] SIM focus pos	-0.782348	-0.7809083437167272	CCD S1 on	N	N
[mm] SIM defocus	0	0.001439871863259334	CCD S2 on	O2	Y
[mm] SIM translation stage pos	-233.592463	-233.5874344608287	CCD S3 on	O1	Y
[mm] SIM translation stage offset	0	-0.005018542100998502	CCD S4 on	N	N
[s] Observation start time (MET)	354340565.184000	354339054.76634	CCD S5 on	N	N
Observation start date	2009-03-25T03:54:59	2009-03-25T03:30:54	Number of optional ACIS chips dropped	0	0
[s] Observation end time (MET)	354345565.184000	354345803.87918	On-chip summing requested	N	N
Observation end date	2009-03-25T05:18:19	2009-03-25T05:23:23	Subarray requested	NONE	NONE
Read mode	TIMED	TIMED	Alternating exposures requested	N	N
			[s] Primary exposure time	0.000000	3.2

2.3 Aspect



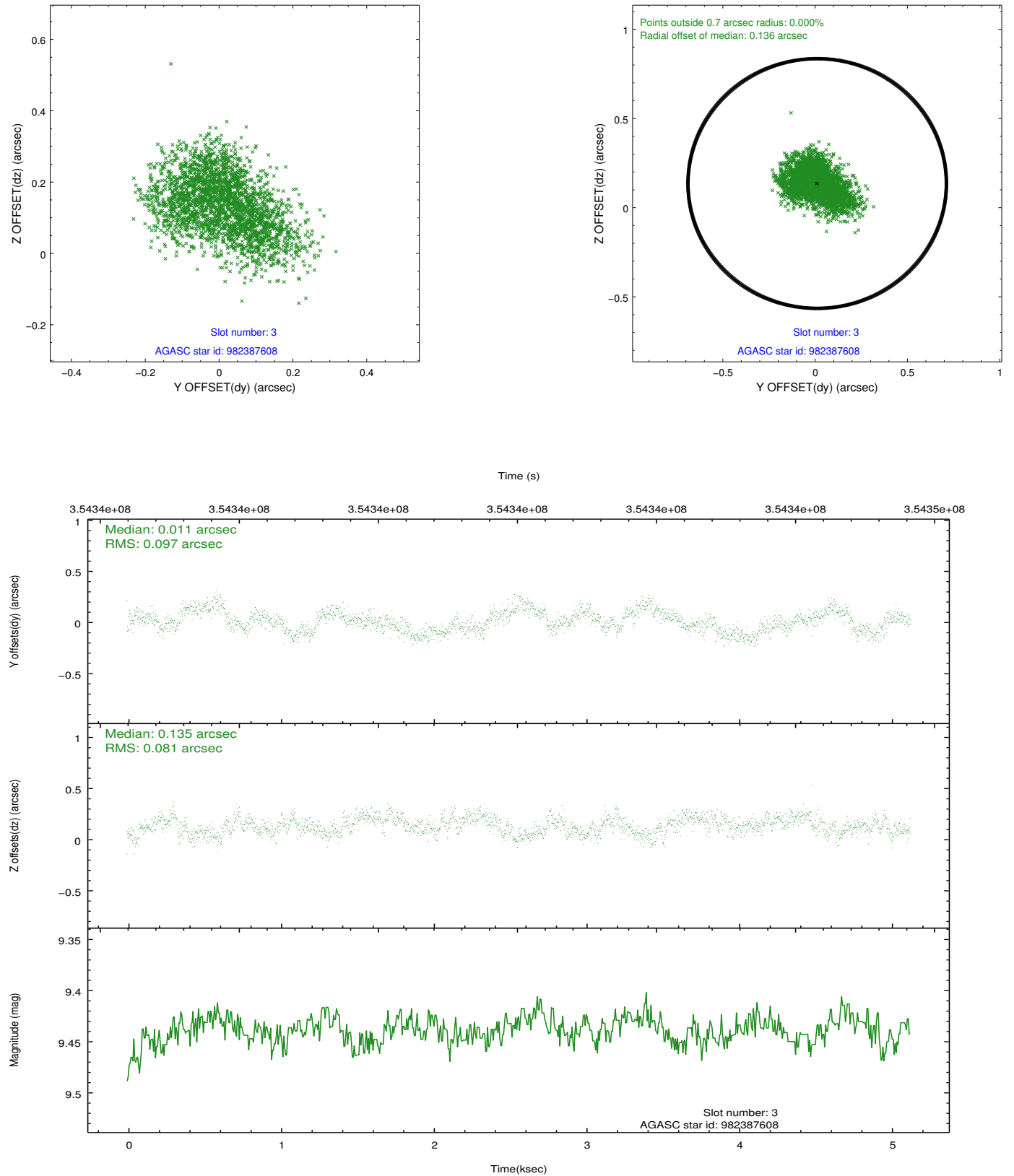


Slot Statistics

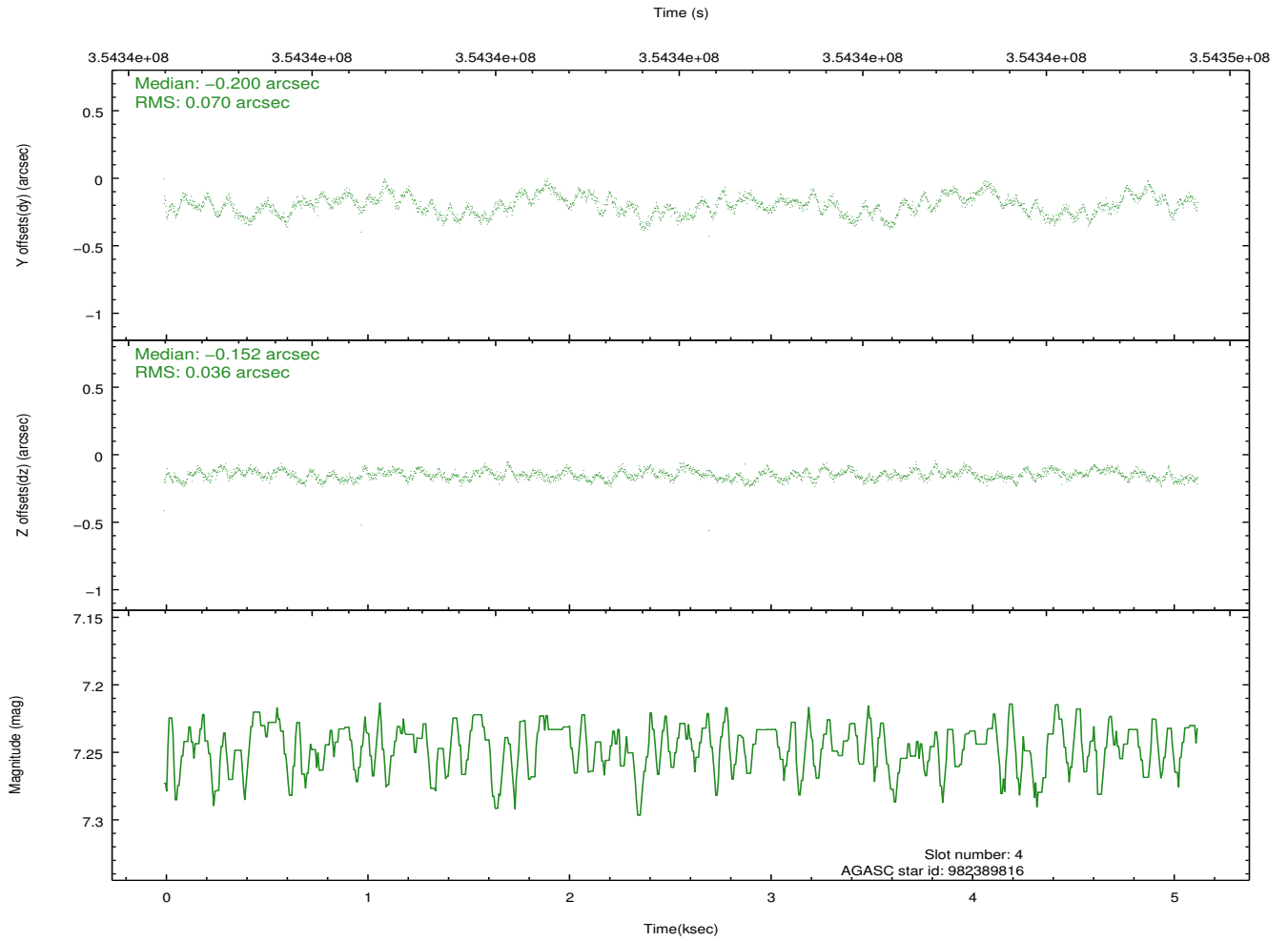
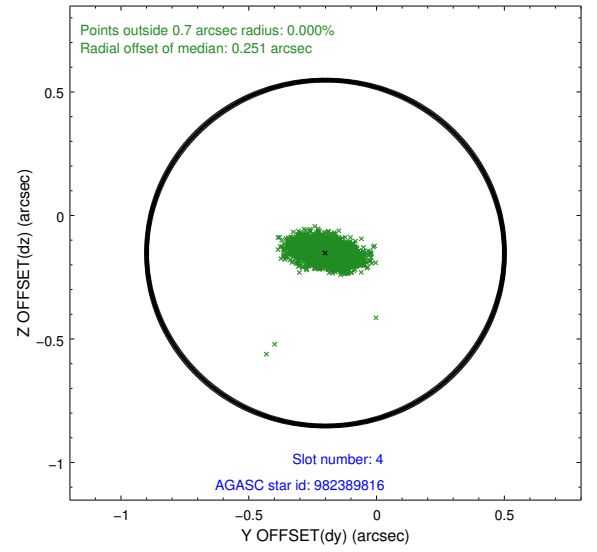
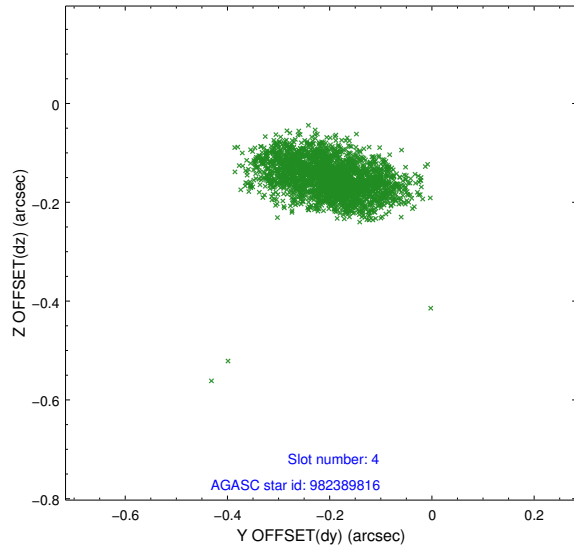
slot	status	id	mag	n_pts	med_dy	med_dz	dr1	dr2	ra	dec	mean_y	mean_z
0	FID	ACIS-I-1	6.95	1252	0.001	-0.047	0.013	0.023	0.000000	0.000000	925.31	-839.26
1	FID	ACIS-I-4	6.87	1252	0.135	0.056	0.010	0.017	0.000000	0.000000	2146.12	1060.07
2	FID	ACIS-I-5	6.94	1252	-0.234	0.062	0.008	0.013	0.000000	0.000000	-1821.43	1059.23
3	GUIDE	982387608	9.44	2501	0.011	0.135	0.135	0.213	332.906505	-35.879157	-166.71	-1241.62
4	GUIDE	982389816	7.24	2502	-0.200	-0.152	0.084	0.137	332.248862	-36.056124	743.17	560.57
5	GUIDE	982395416	9.33	2494	0.025	0.276	0.142	0.223	332.854937	-36.041371	-469.83	-720.19
6	GUIDE	983305888	8.83	2501	0.177	0.106	0.097	0.148	333.065339	-36.167870	-1225.68	-826.26
7	GUIDE	982385568	8.75	2500	-0.005	-0.355	0.076	0.122	332.047781	-36.608381	-253.02	2377.00

2.4 Star Slots

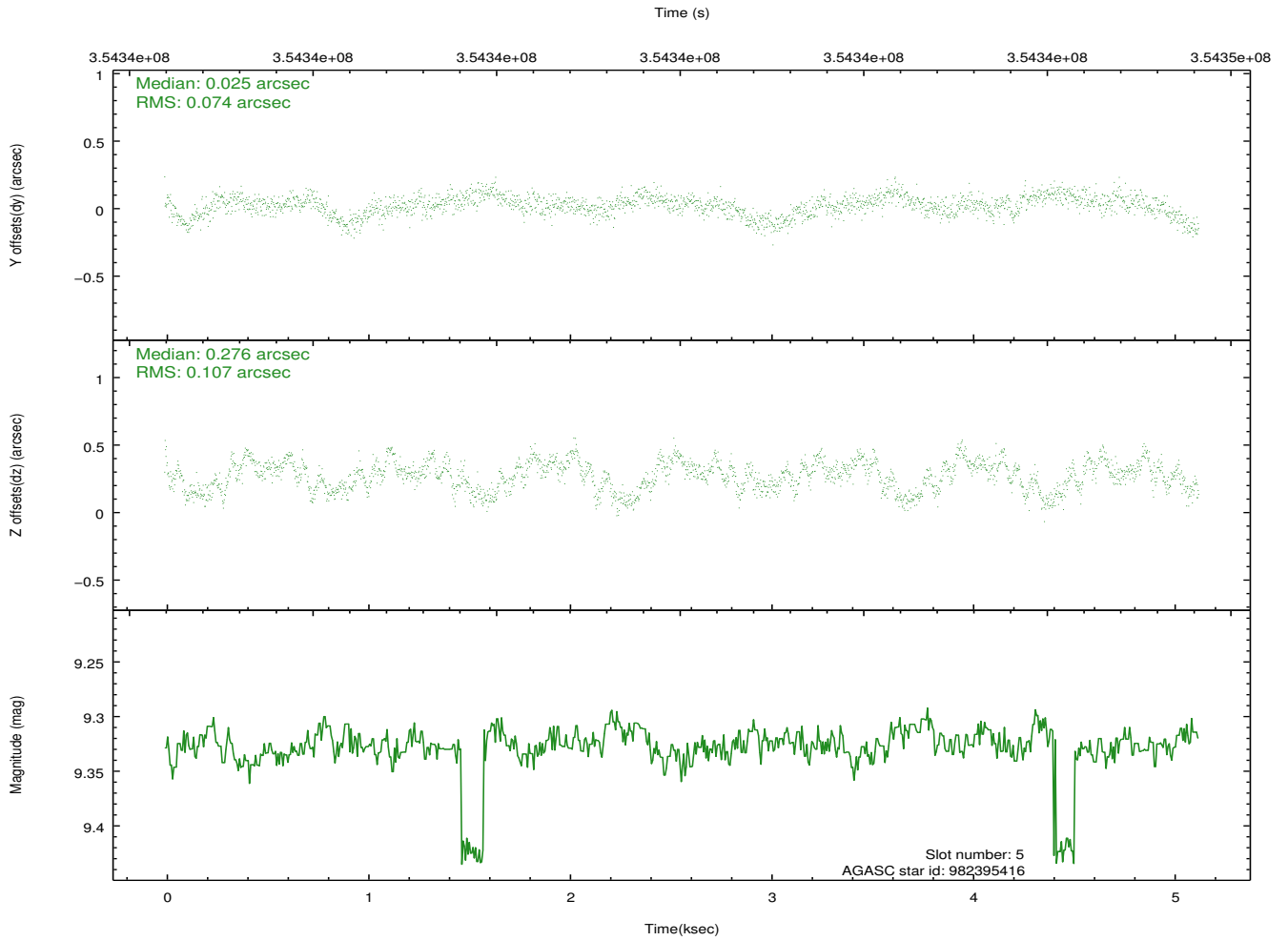
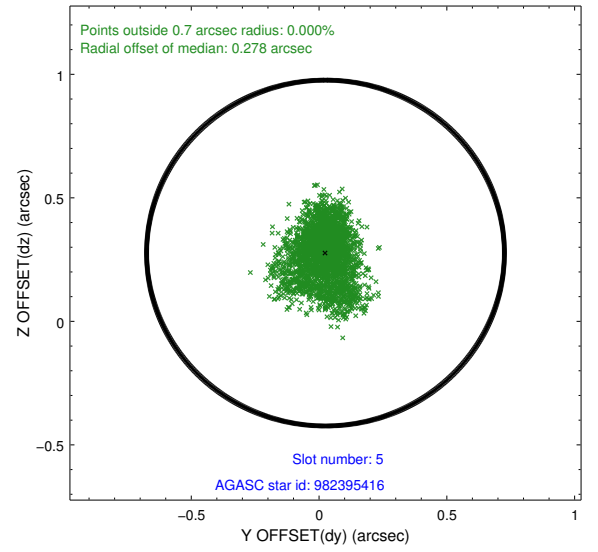
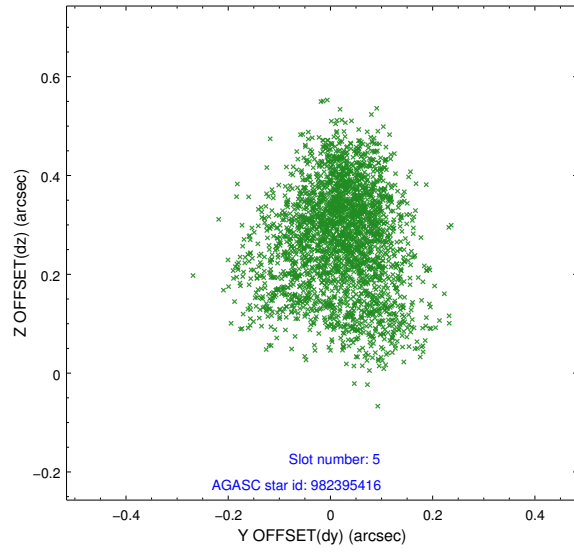
2.4.1 Slot 3



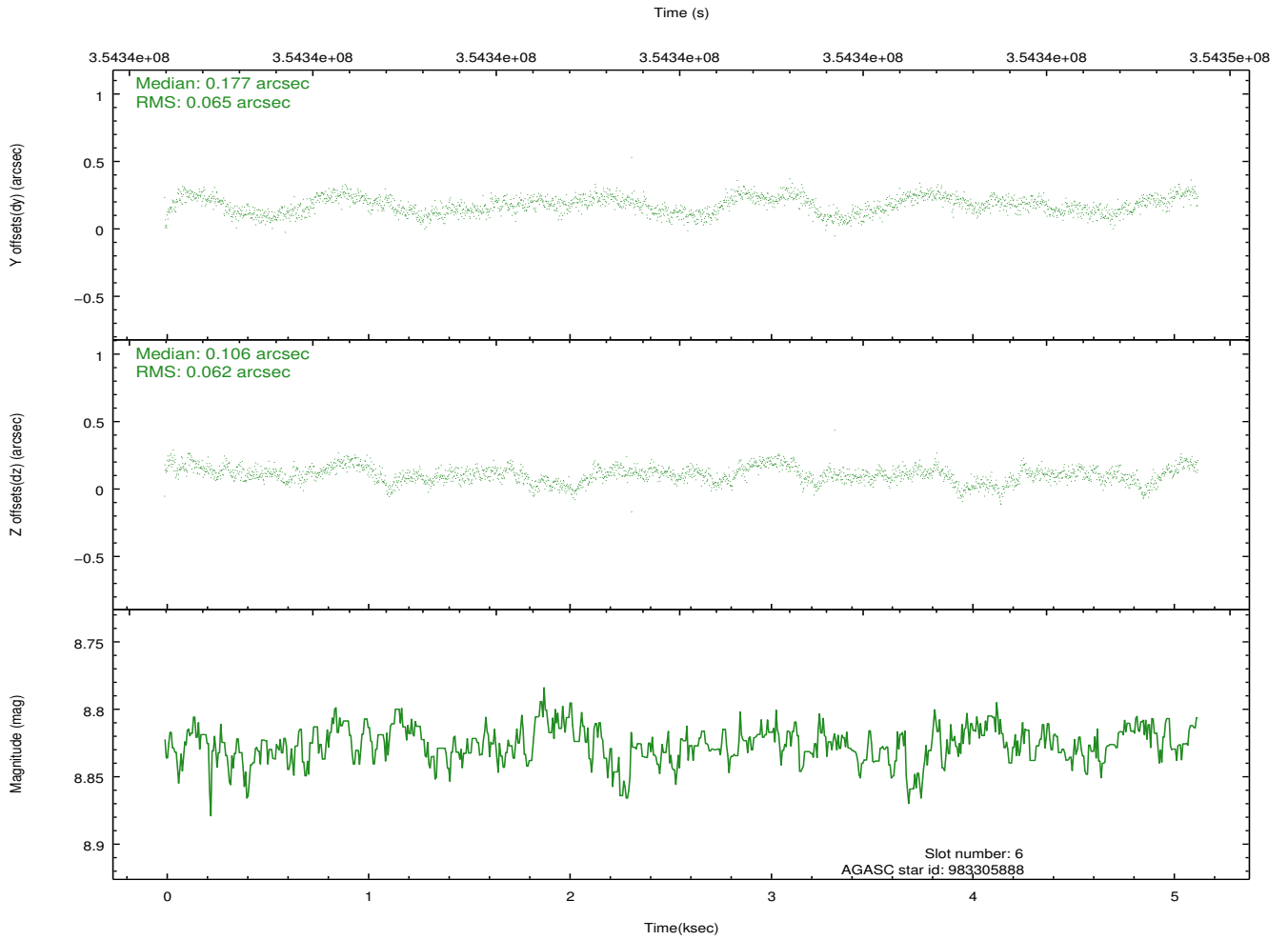
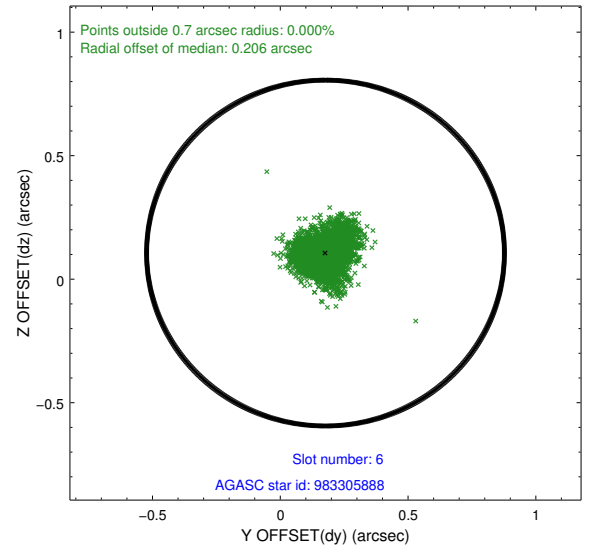
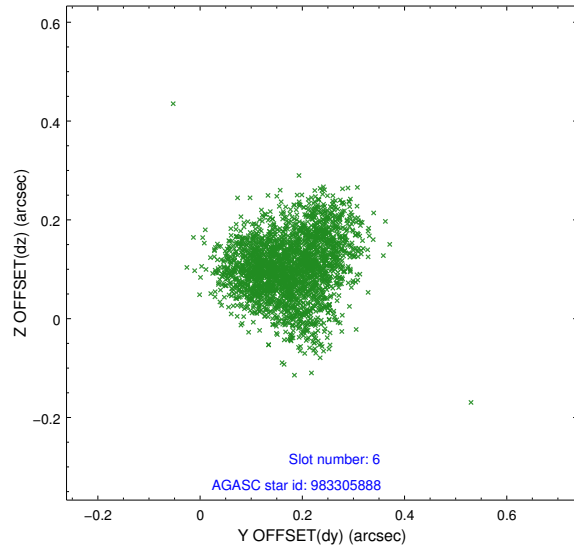
2.4.2 Slot 4



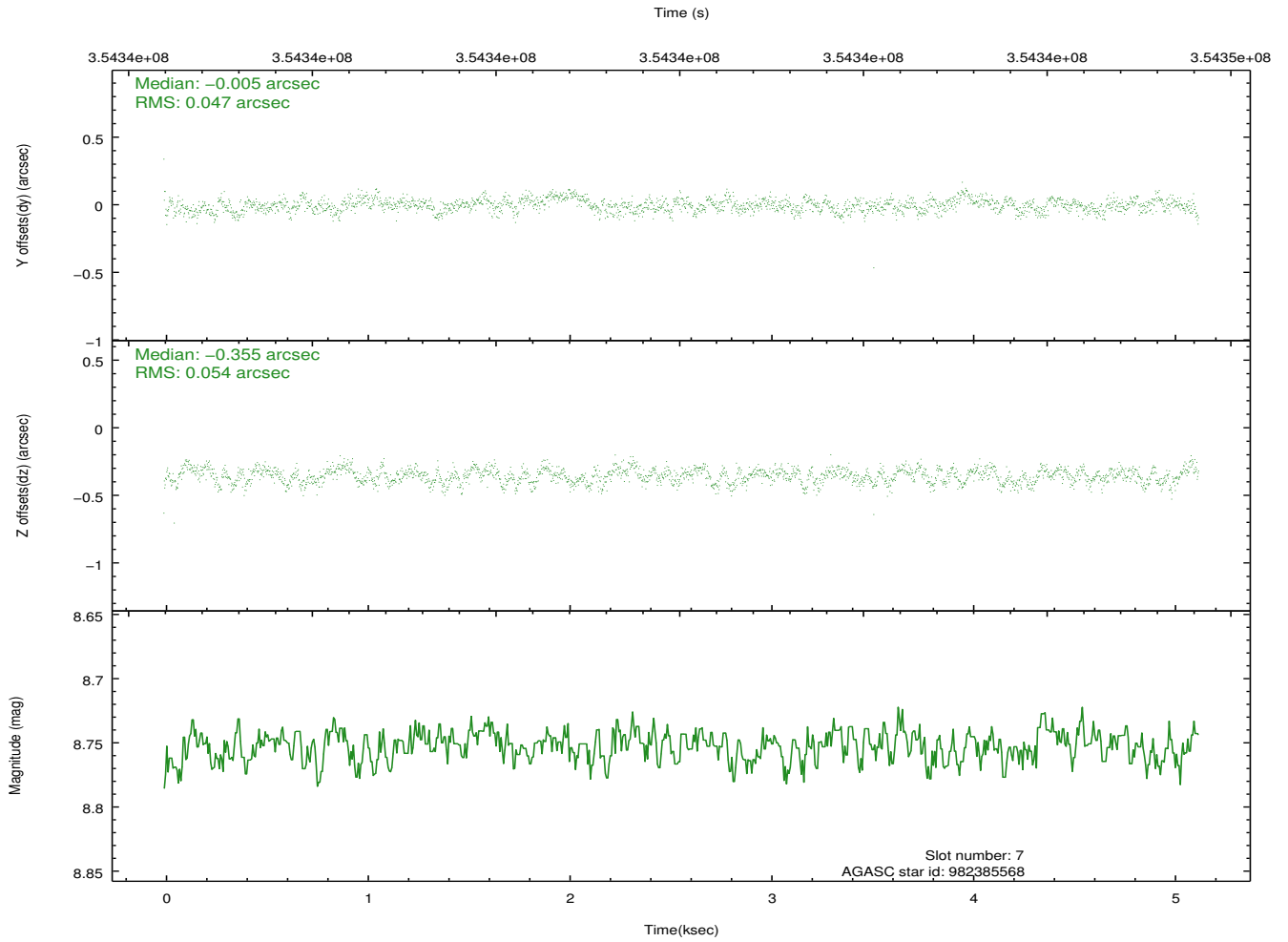
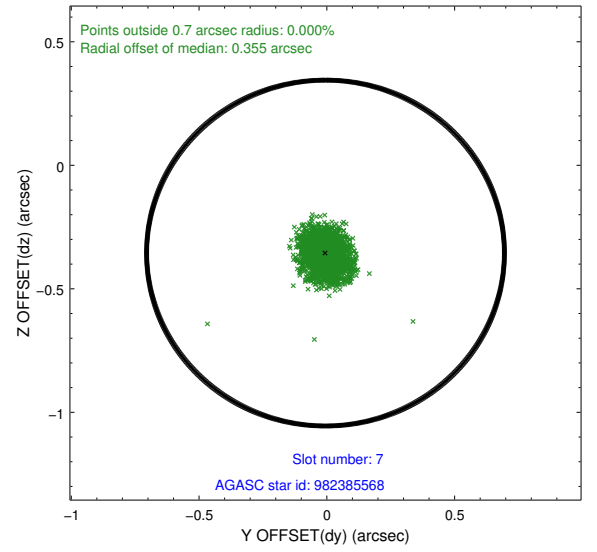
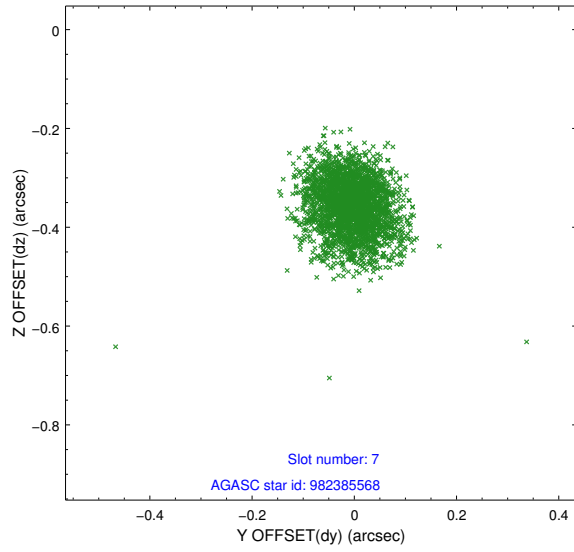
2.4.3 Slot 5



2.4.4 Slot 6

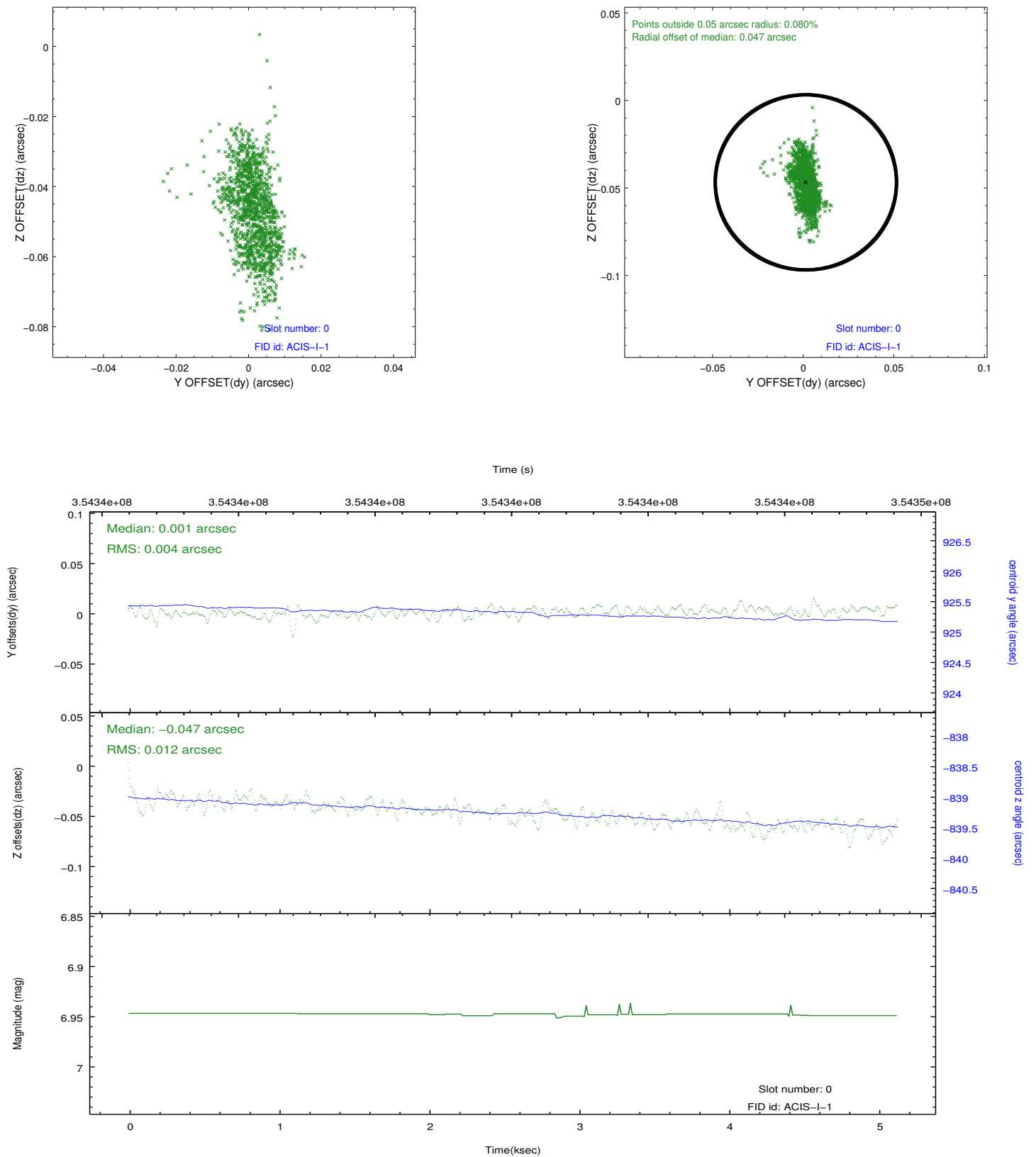


2.4.5 Slot 7

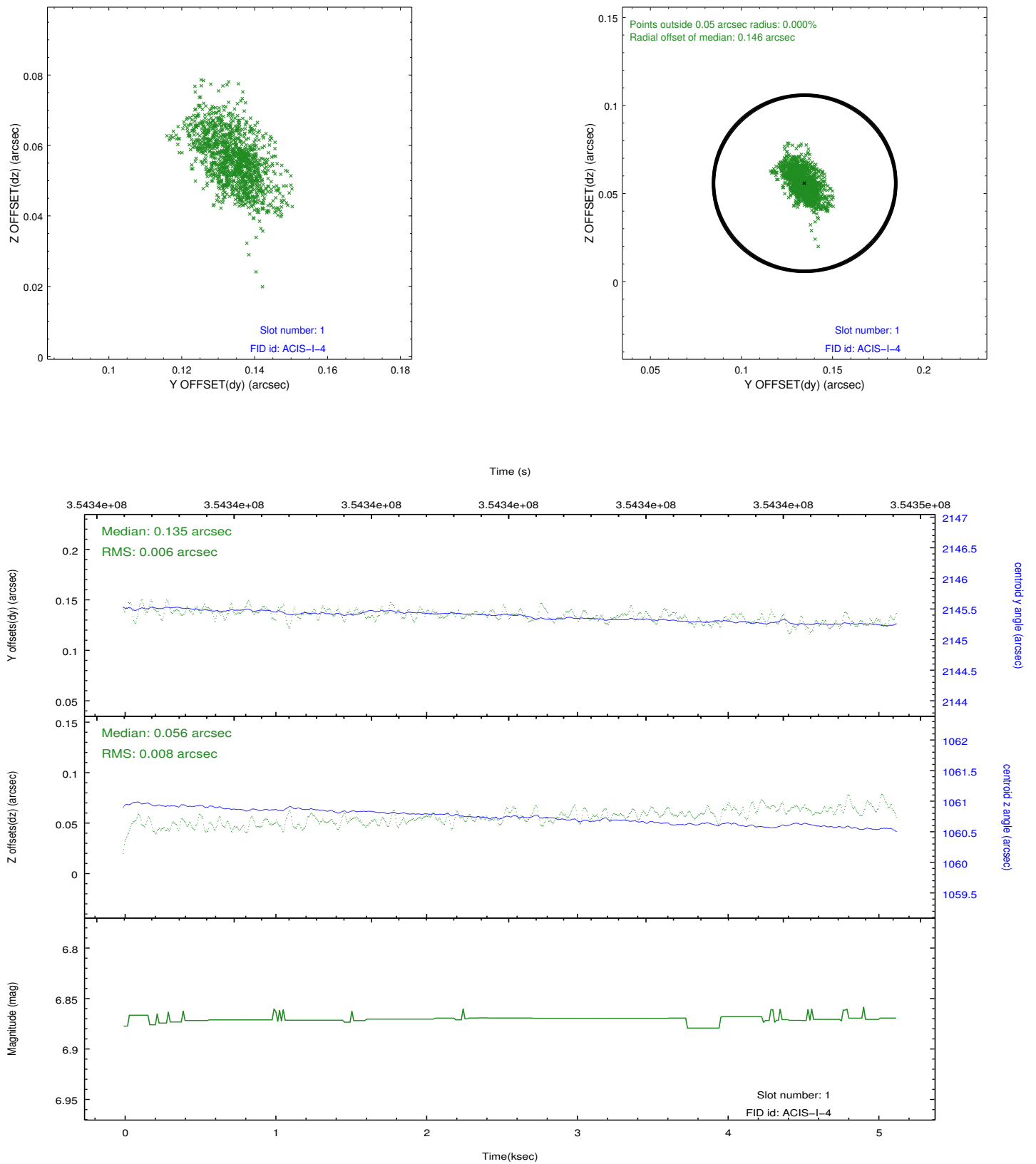


2.5 FID Slots

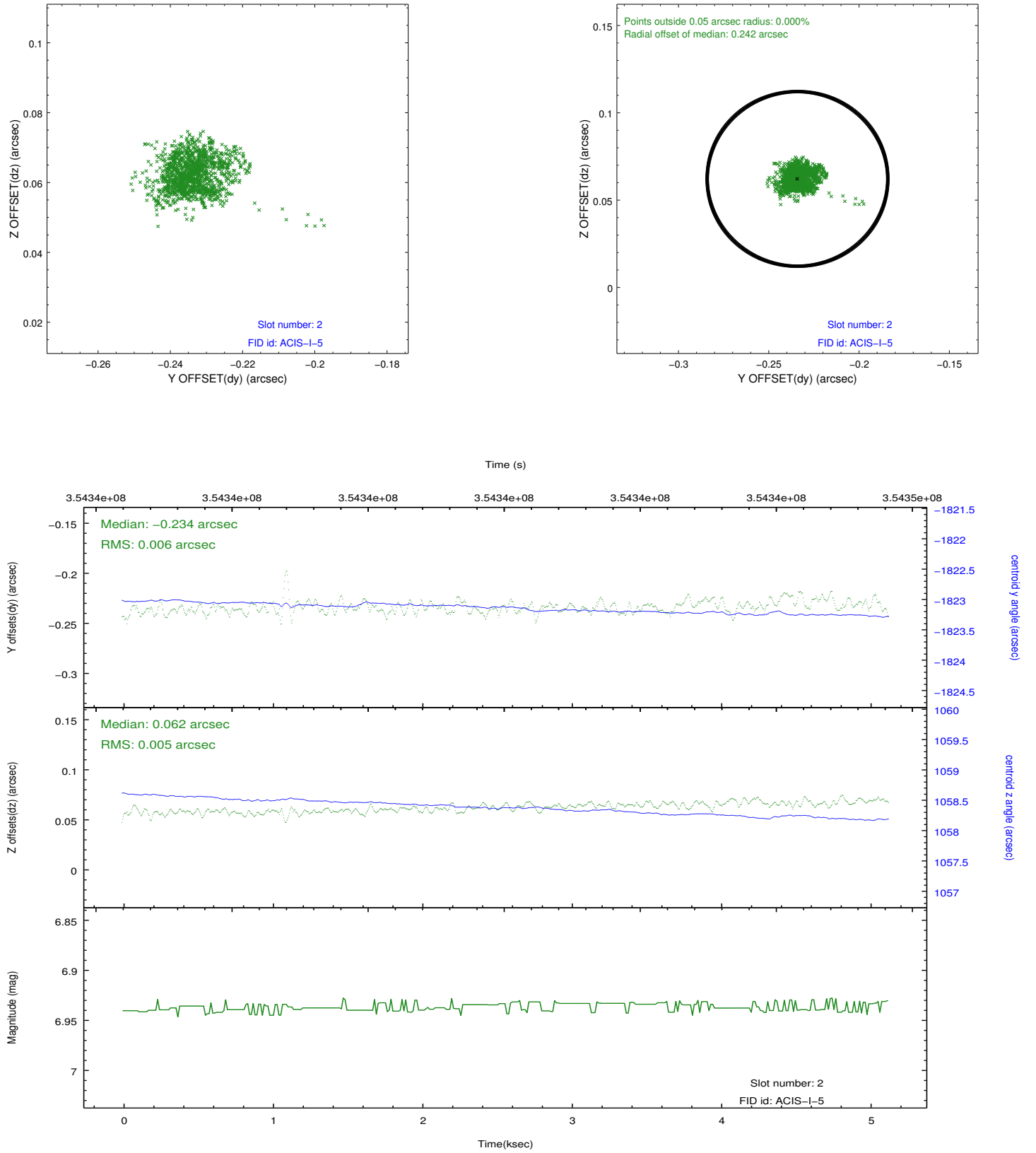
2.5.1 Slot 0



2.5.2 Slot 1



2.5.3 Slot 2



A Summary

A.1 Status

V&V Scientist	Beth Sundheim
V&V Date (YYYY-MM-DD)	2012.06.07
V&V Edition	1
V&V Disposition and Status	OK
V&V Charge Time	5.12319998

A.2 Comments