

V&V Reference Report

L2 ASCDS Version : 8.4.5

Observation 10568 - L2 Version 2
Chandra X-Ray Center

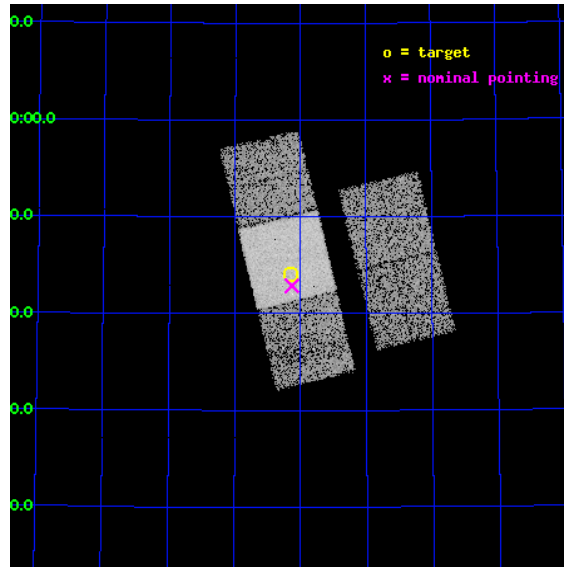
L2 Processing Date : Jun 9 2012

Contents

1	Front	2
2	OBI	3
2.1	OBI	3
2.1.1	Images	3
2.1.2	Bias	3
2.1.3	Parameters	4
2.1.4	Events	4
2.2	Compared Parameters	5
2.3	Aspect	6
2.4	Star Slots	9
2.4.1	Slot 3	9
2.4.2	Slot 4	10
2.4.3	Slot 5	11
2.4.4	Slot 6	12
2.4.5	Slot 7	13
2.5	FID Slots	14
2.5.1	Slot 0	14
2.5.2	Slot 1	15
2.5.3	Slot 2	16
A	Summary	17
A.1	Status	17
A.2	Comments	17

1 Front

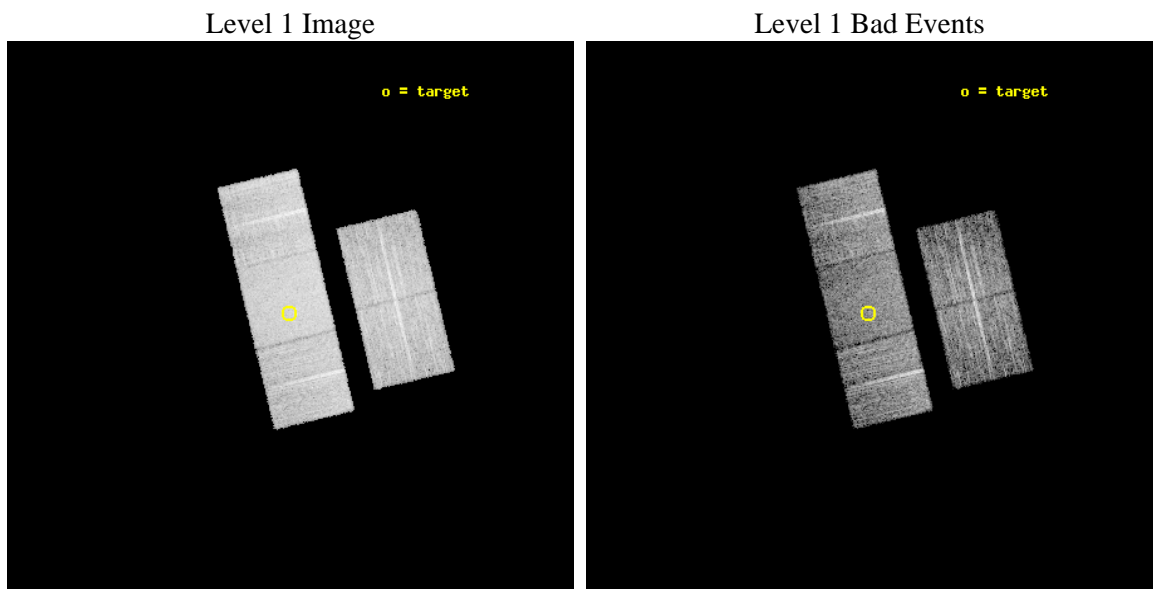
seq_num	600761	Sequence number
obs_id	10568	Observation id
title	The Most Luminous ULXs	Proposal title
observer	Douglas Swartz	Principal investigator
object	Arp 104	Source name
dtcycle	0	
cycle	P	events from which exps? Prim/Second/Both
ra_targ	203.037083	Observer's specified target RA [deg]
dec_targ	62.733889	Observer's specified target Dec [deg]
ra_nom	203.03279524771	Nominal RA [deg]
dec_nom	62.714703026106	Nominal Dec [deg]
roll_nom	256.49767749768	Nominal Roll [deg]
revision	2	Processing version of data
ontime	5471.5000420809	Sum of GTIs [s]
livetime	5400.0108659714	Livetime [s]
ontime2	5471.5000420809	Sum of GTIs [s]
ontime3	5471.5000420809	Sum of GTIs [s]
ontime6	5471.5000420809	Sum of GTIs [s]
ontime7	5471.5000420809	Sum of GTIs [s]
ontime8	5471.5000420809	Sum of GTIs [s]
l2events	59155	Number of level 2 events



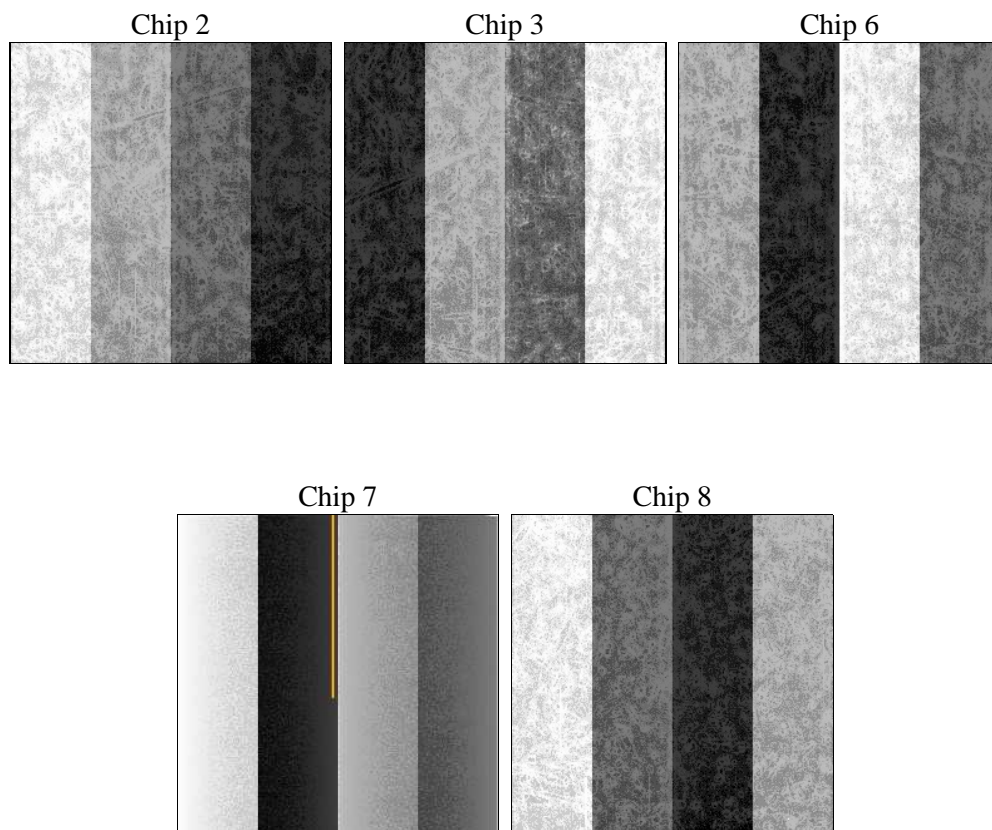
2 OBI

2.1 OBI

2.1.1 Images



2.1.2 Bias



2.1.3 Parameters

obi_num	1	Obi number	sched_exp_time	5440.000000	[s] Scheduled observation exposure time
ascdsver	8.4.5	Processing system revision	ontime	5471.5000420809	Sum of GTIs [s]
caldsver	4.4.10	 	ontime2	5471.5000420809	Sum of GTIs [s]
date	2012-06-09T23:01:31	Date and time of file creation	ontime3	5471.5000420809	Sum of GTIs [s]
revision	2	Processing version of data	ontime6	5471.5000420809	Sum of GTIs [s]
			ontime7	5471.5000420809	Sum of GTIs [s]
			ontime8	5471.5000420809	Sum of GTIs [s]
			l1events	330581	Number of level 1 events

2.1.4 Events

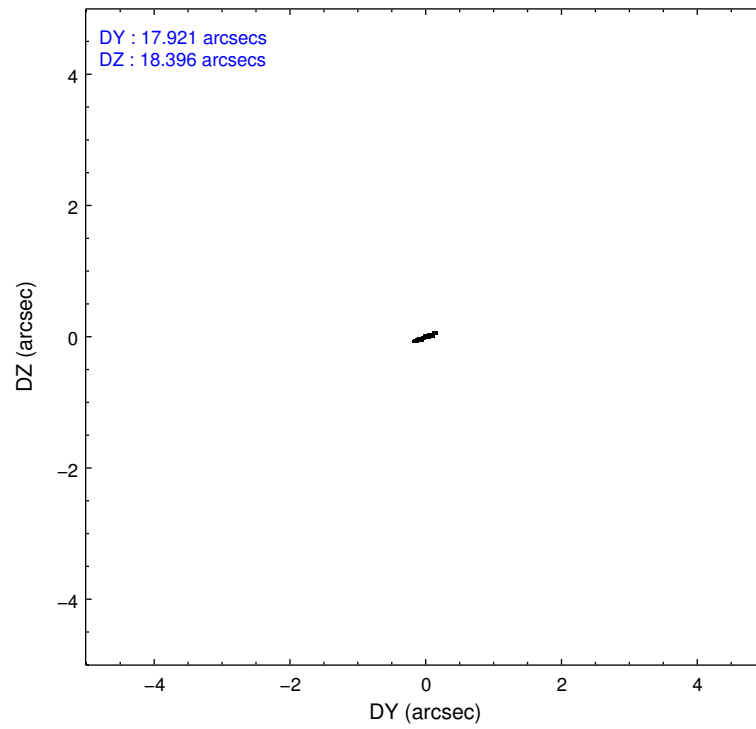
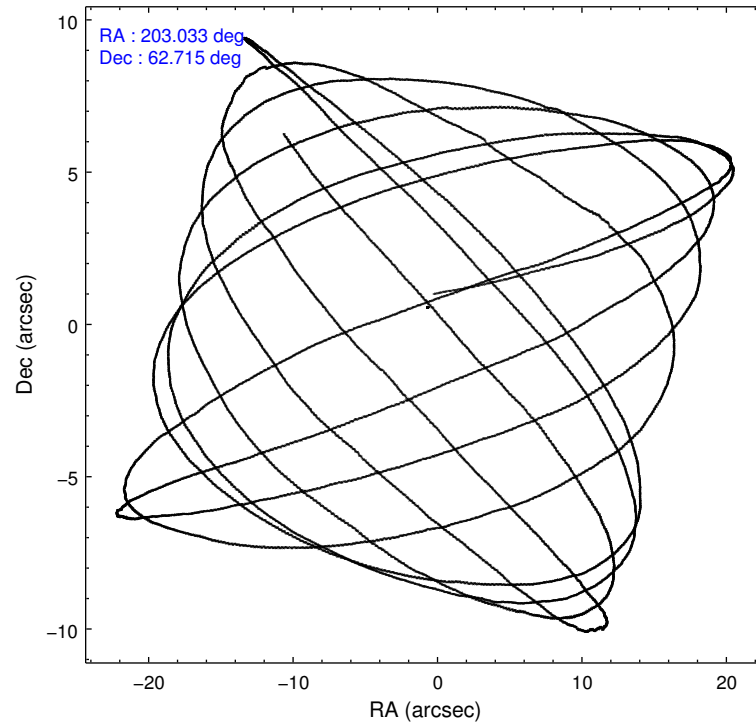
	ccd 2	ccd 3	ccd 6	ccd 7	ccd 8
level 1 events	55244	56860	61313	81654	75510
rejected events	48293	49791	53944	47732	58489
rejected %	87%	87%	87%	58%	77%

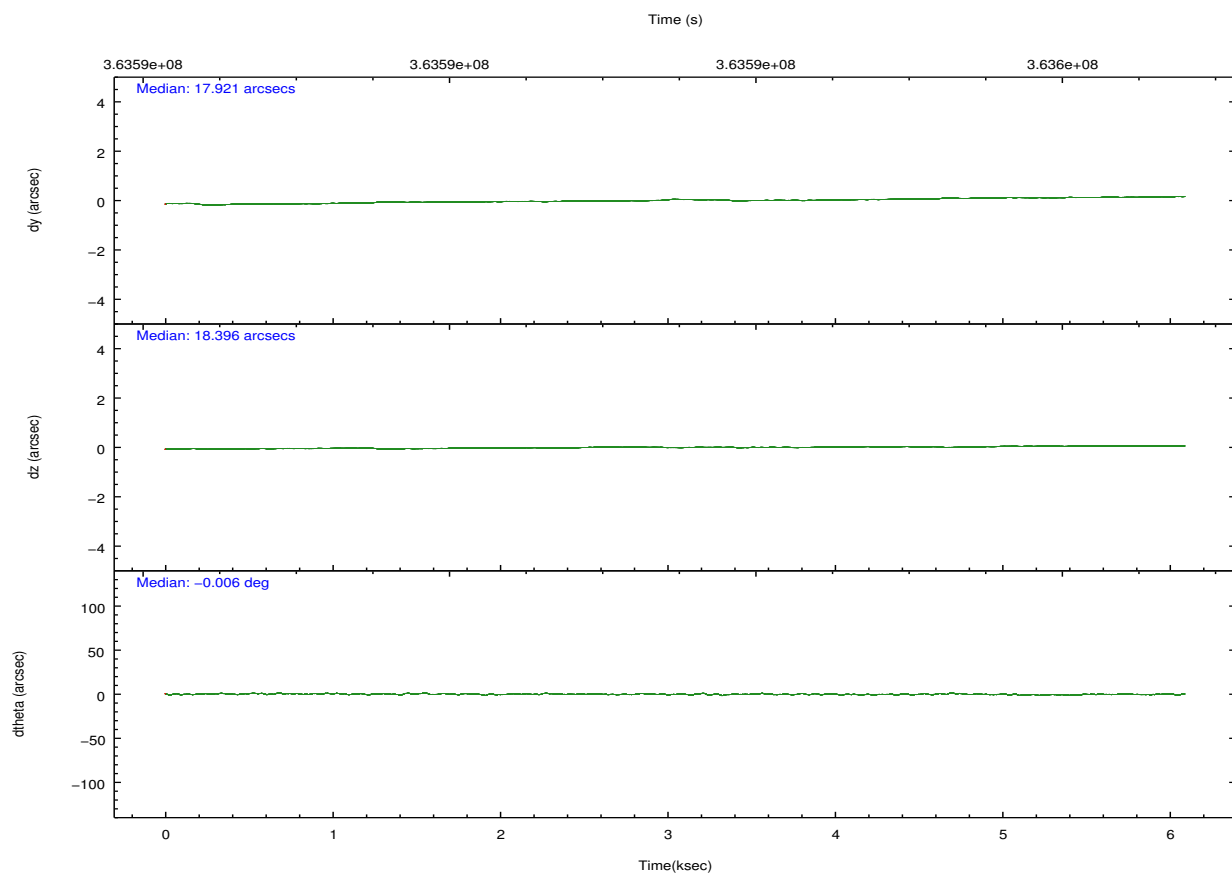
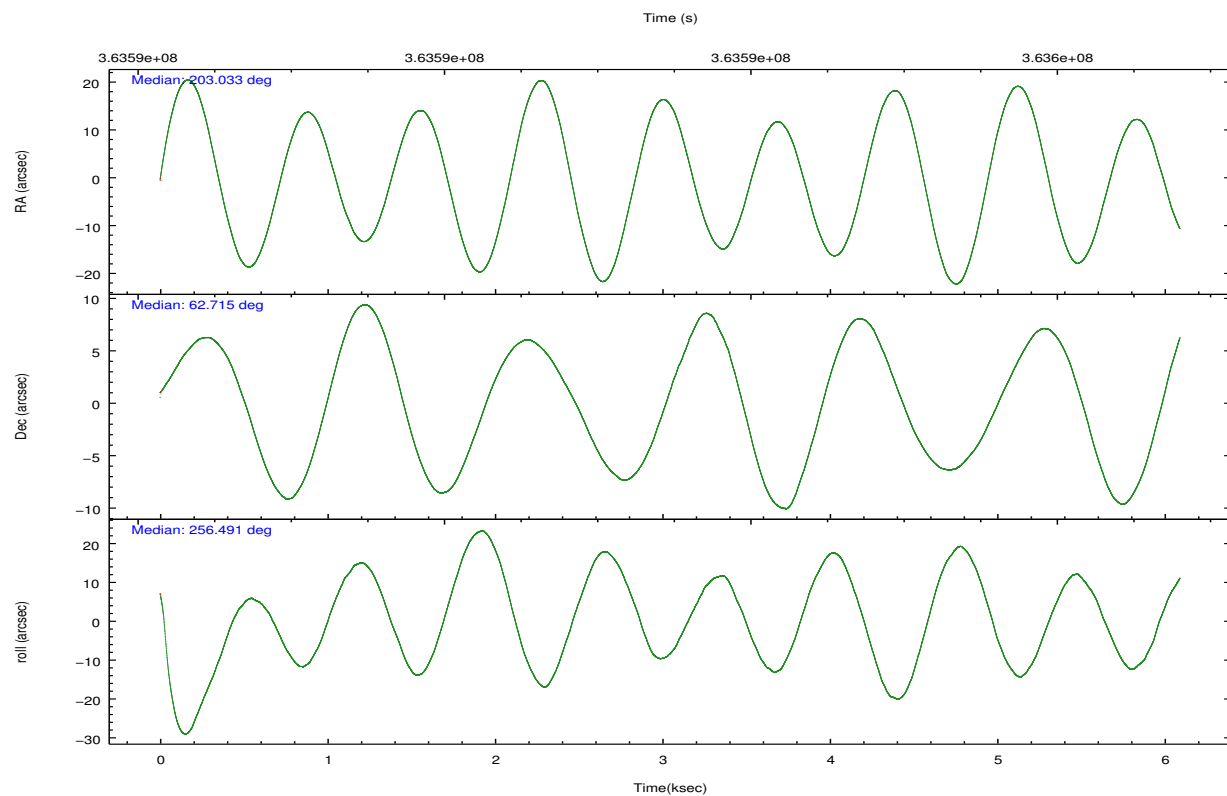
	ccd 2	ccd 3	ccd 6	ccd 7	ccd 8
grade 0 events	3102	3065	2934	2859	5440
	5%	5%	4%	3%	7%
grade 1 events	45	51	30	91	64
	0%	0%	0%	0%	0%
grade 2 events	1473	1468	1640	6883	3893
	2%	2%	2%	8%	5%
grade 3 events	638	628	684	2822	1689
	1%	1%	1%	3%	2%
grade 4 events	630	651	609	2848	1671
	1%	1%	0%	3%	2%
grade 5 events	2313	2818	2739	7704	3817
	4%	4%	4%	9%	5%
grade 6 events	1118	1269	1509	18543	4352
	2%	2%	2%	22%	5%
grade 7 events	45925	46910	51168	39904	54584
	83%	82%	83%	48%	72%

2.2 Compared Parameters

Parameter	Planned	Actual	Parameter	Planned	Actual
Instrument	ACIS	ACIS	Obspar format version number	7	7
Detector	ACIS-23678	ACIS-23678	Obspar file type	PREDICTED	ACTUAL
Grating	NONE	NONE	Obspar update status	NONE	UPDATED
Data mode	FAINT	FAINT	CCD I0 on	N	N
Observation mode	POINTING	POINTING	CCD I1 on	N	N
[deg] Pointing RA	203.014925	203.0327952477102	CCD I2 on	O1	Y
[deg] Pointing Dec	62.740822	62.71470302610589	CCD I3 on	O2	Y
[deg] Pointing Roll	256.356950	256.4976774976799	CCD S0 on	N	N
[mm] SIM focus pos	-0.684267	-0.6828225247311905	CCD S1 on	N	N
[mm] SIM defocus	0	0.001444936568705701	CCD S2 on	Y	Y
[mm] SIM translation stage pos	-190.132523	-190.1400660498719	CCD S3 on	Y	Y
[mm] SIM translation stage offset	0	0.00754346686406393	CCD S4 on	Y	Y
[s] Observation start time (MET)	363591079.184000	363589917.515	CCD S5 on	N	N
Observation start date	2009-07-10T05:30:13	2009-07-10T05:11:57	Number of optional ACIS chips dropped	0	0
[s] Observation end time (MET)	363596519.184000	363597681.89039	On-chip summing requested	N	N
Observation end date	2009-07-10T07:00:53	2009-07-10T07:21:21	Subarray requested	NONE	NONE
Read mode	TIMED	TIMED	Alternating exposures requested	N	N
			[s] Primary exposure time	0.000000	3.1

2.3 Aspect



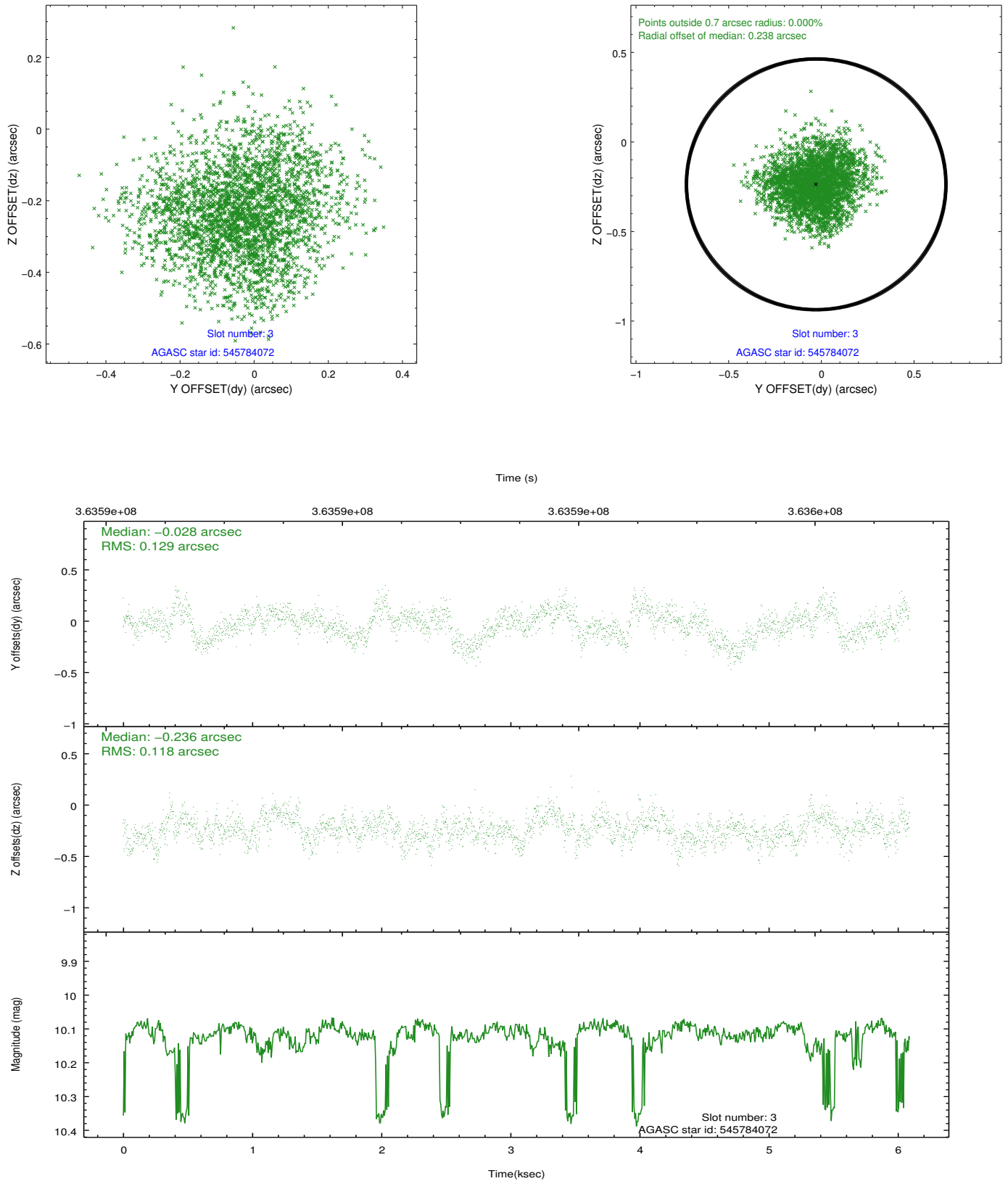


Slot Statistics

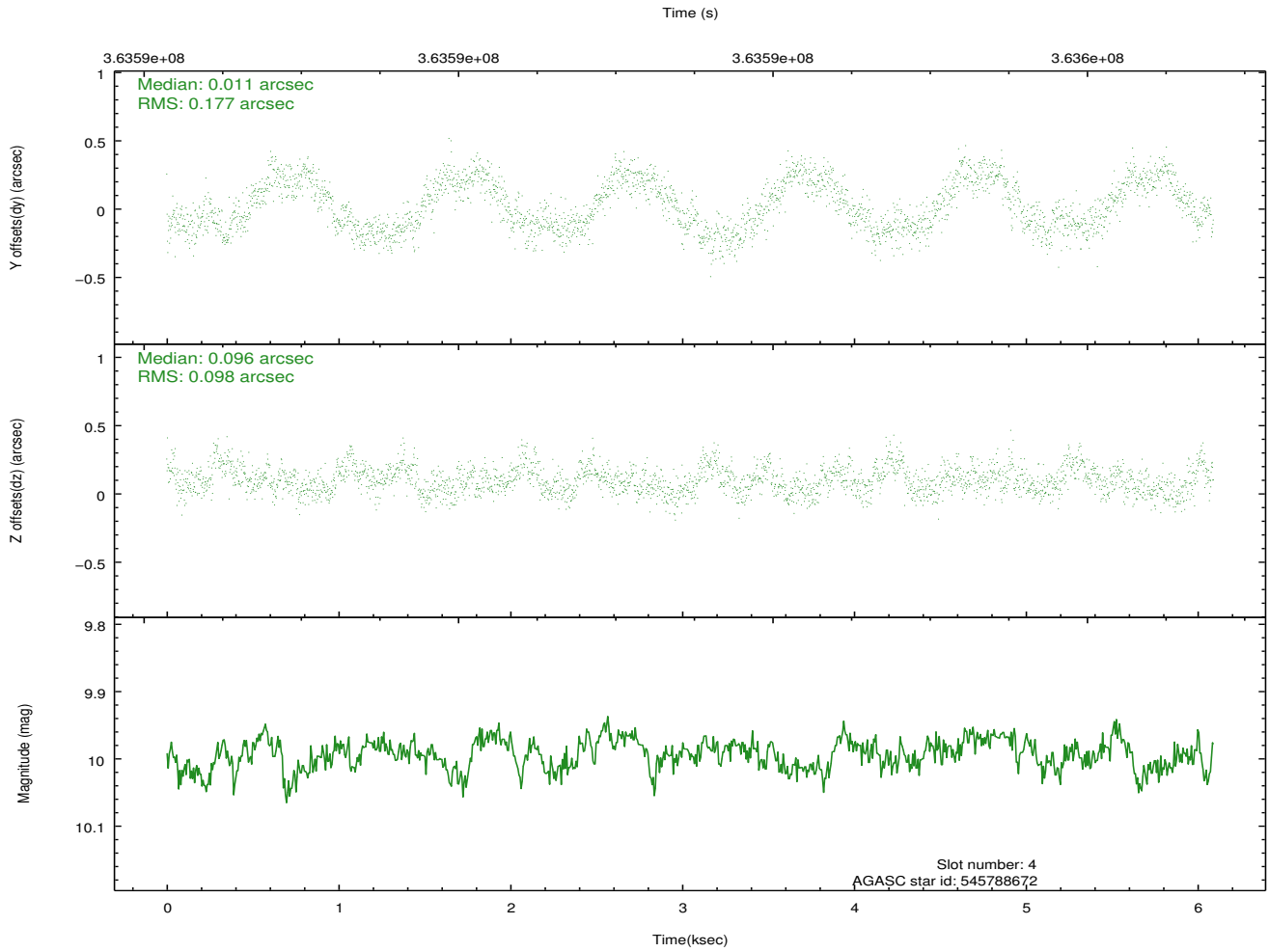
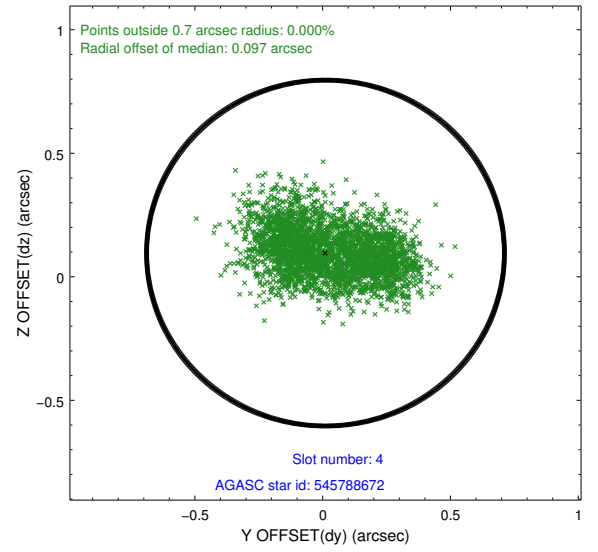
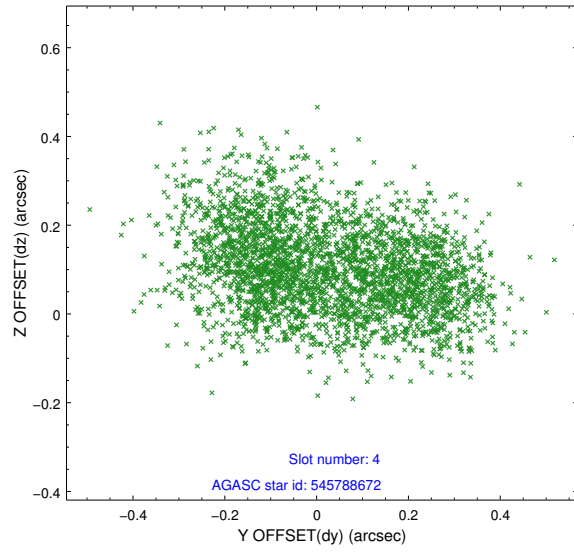
slot	status	id	mag	n_pts	med_dy	med_dz	dr1	dr2	ra	dec	mean_y	mean_z
0	FID	ACIS-S-1	6.96	1485	0.174	-0.047	0.006	0.011	0.000000	0.000000	925.25	-1735.53
1	FID	ACIS-S-2	6.89	1486	-0.098	-0.033	0.006	0.011	0.000000	0.000000	-770.38	-1741.09
2	FID	ACIS-S-5	7.00	1486	-0.099	0.086	0.006	0.012	0.000000	0.000000	-1824.63	161.12
3	GUIDE	545784072	10.12	2947	-0.028	-0.236	0.190	0.295	204.118686	62.463829	520.68	2016.36
4	GUIDE	545788672	9.99	2968	0.011	0.096	0.220	0.337	202.259397	62.202071	2177.48	-775.97
5	GUIDE	546177992	9.73	2963	0.003	-0.005	0.139	0.225	203.508322	62.524478	561.41	978.72
6	GUIDE	546181136	10.01	2963	-0.017	0.145	0.144	0.236	203.952370	63.162180	-1843.79	1120.42
7	GUIDE	546182744	9.63	2967	0.033	-0.002	0.158	0.253	201.689740	62.721935	560.00	-2113.50

2.4 Star Slots

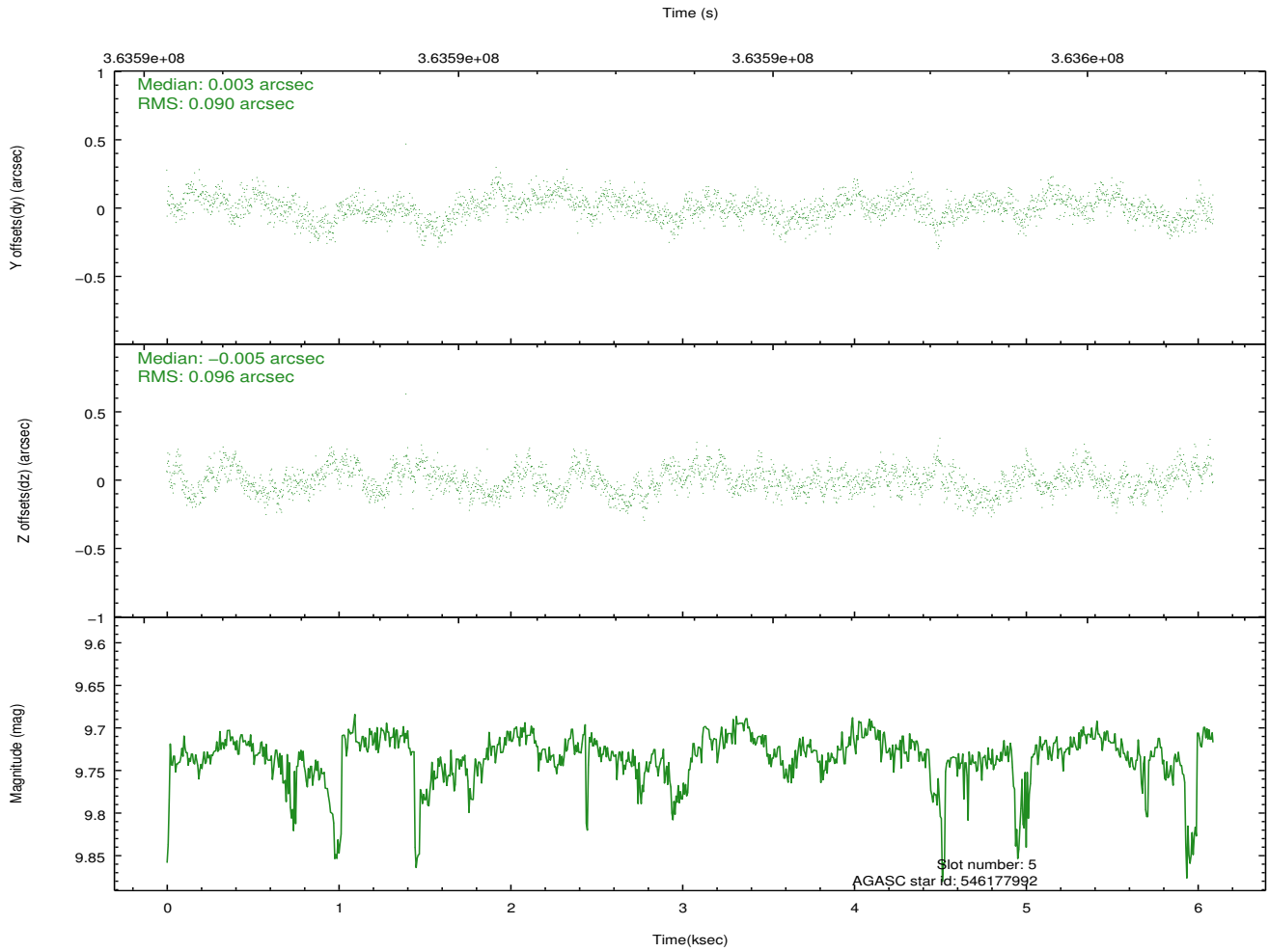
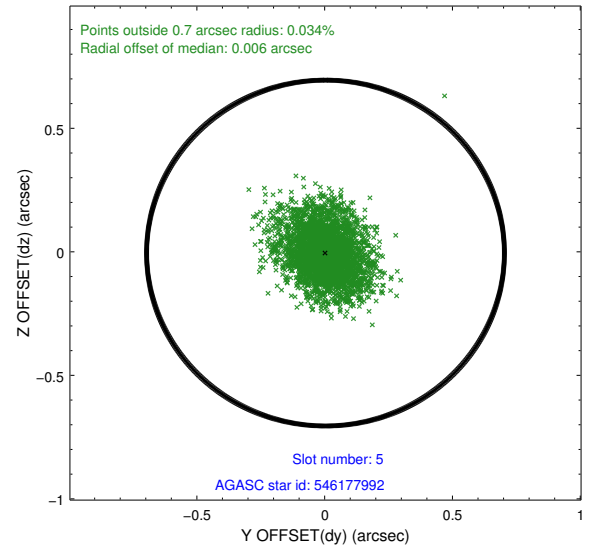
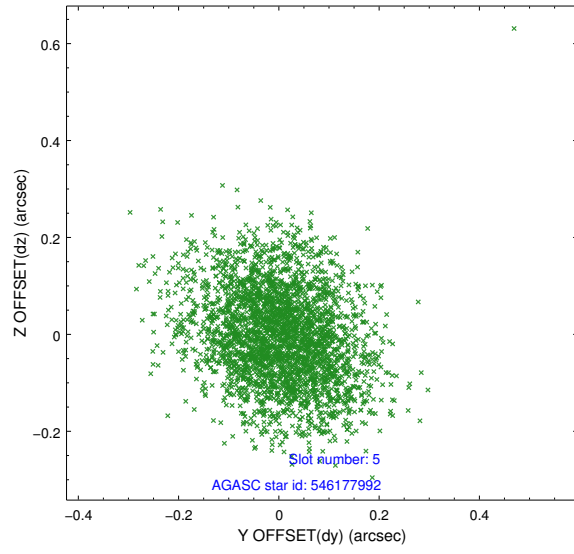
2.4.1 Slot 3



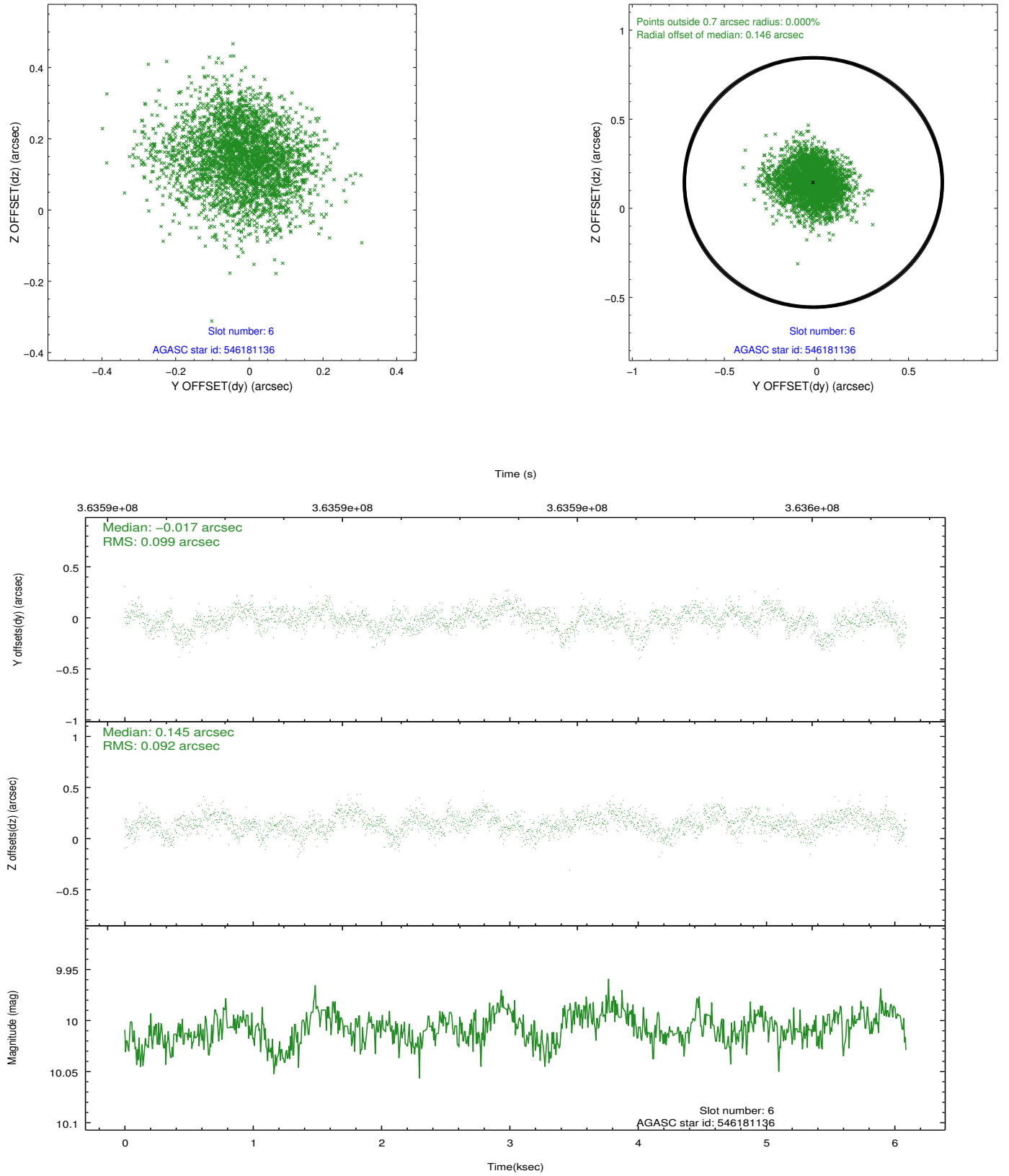
2.4.2 Slot 4



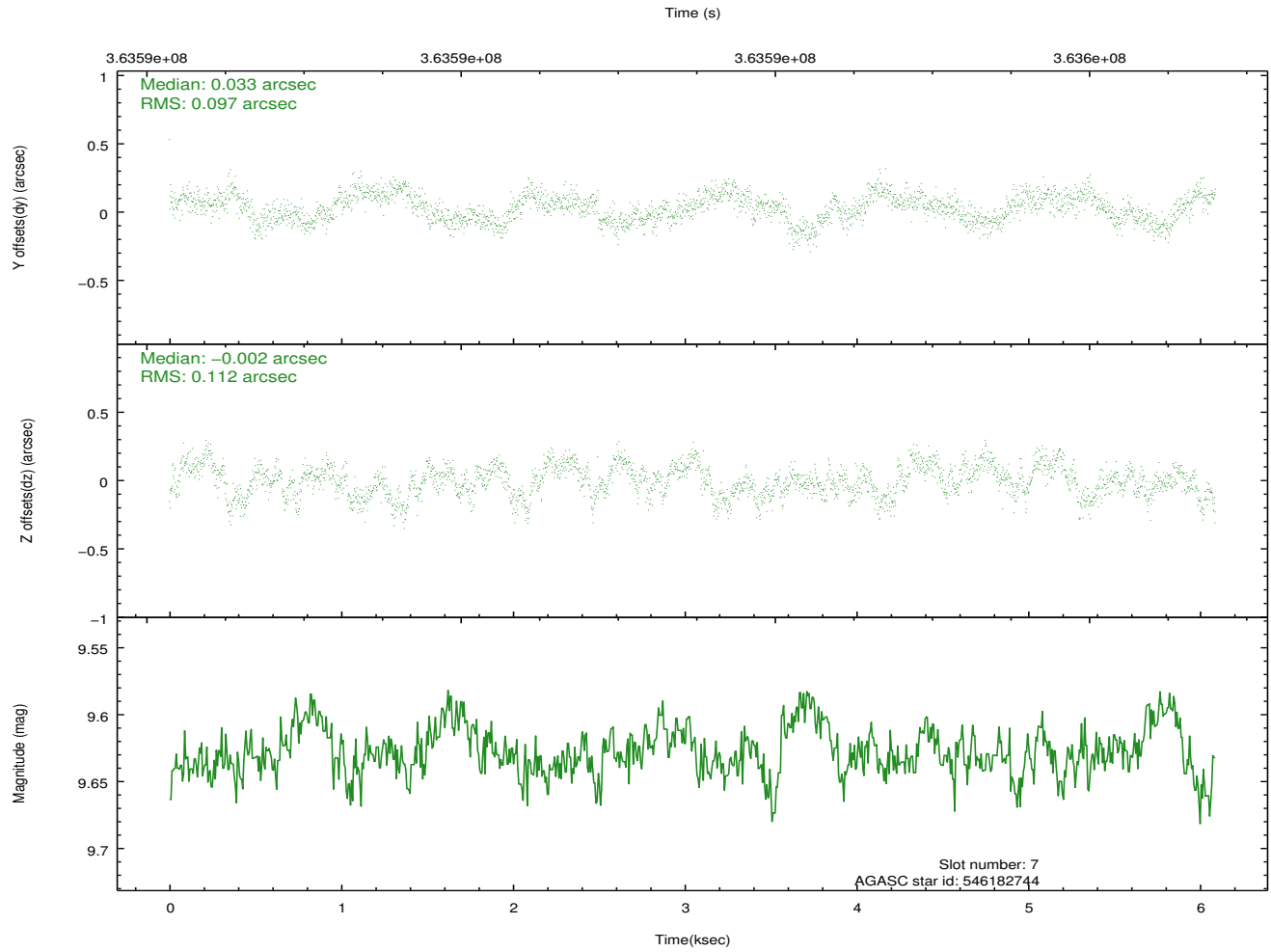
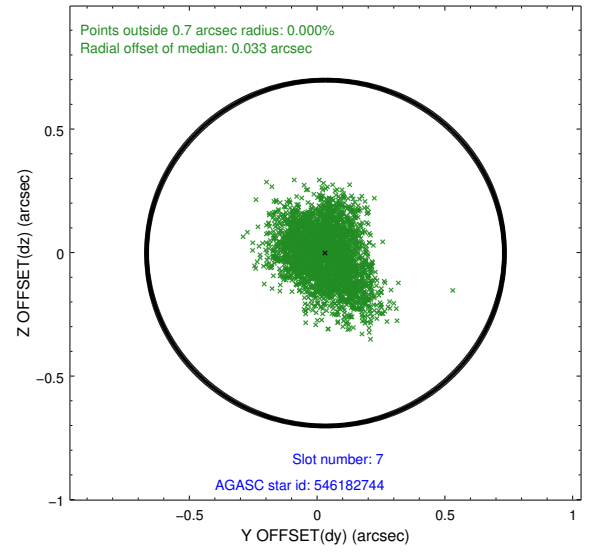
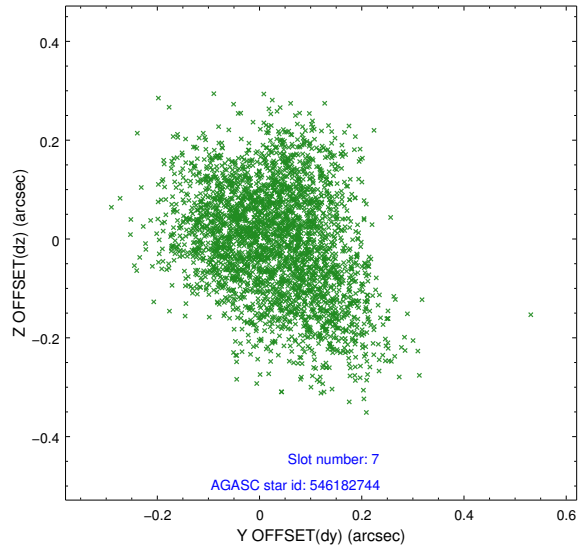
2.4.3 Slot 5



2.4.4 Slot 6

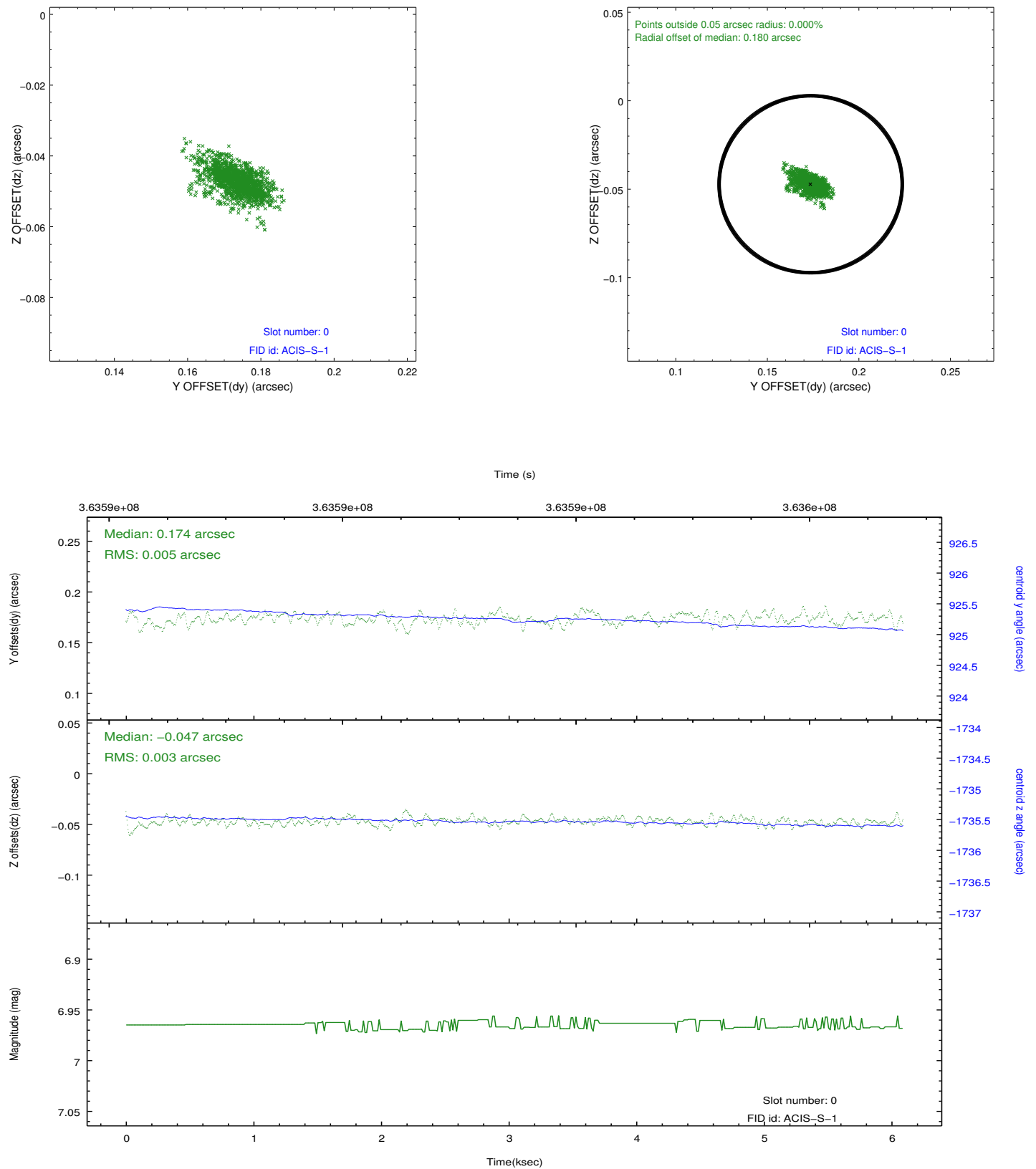


2.4.5 Slot 7

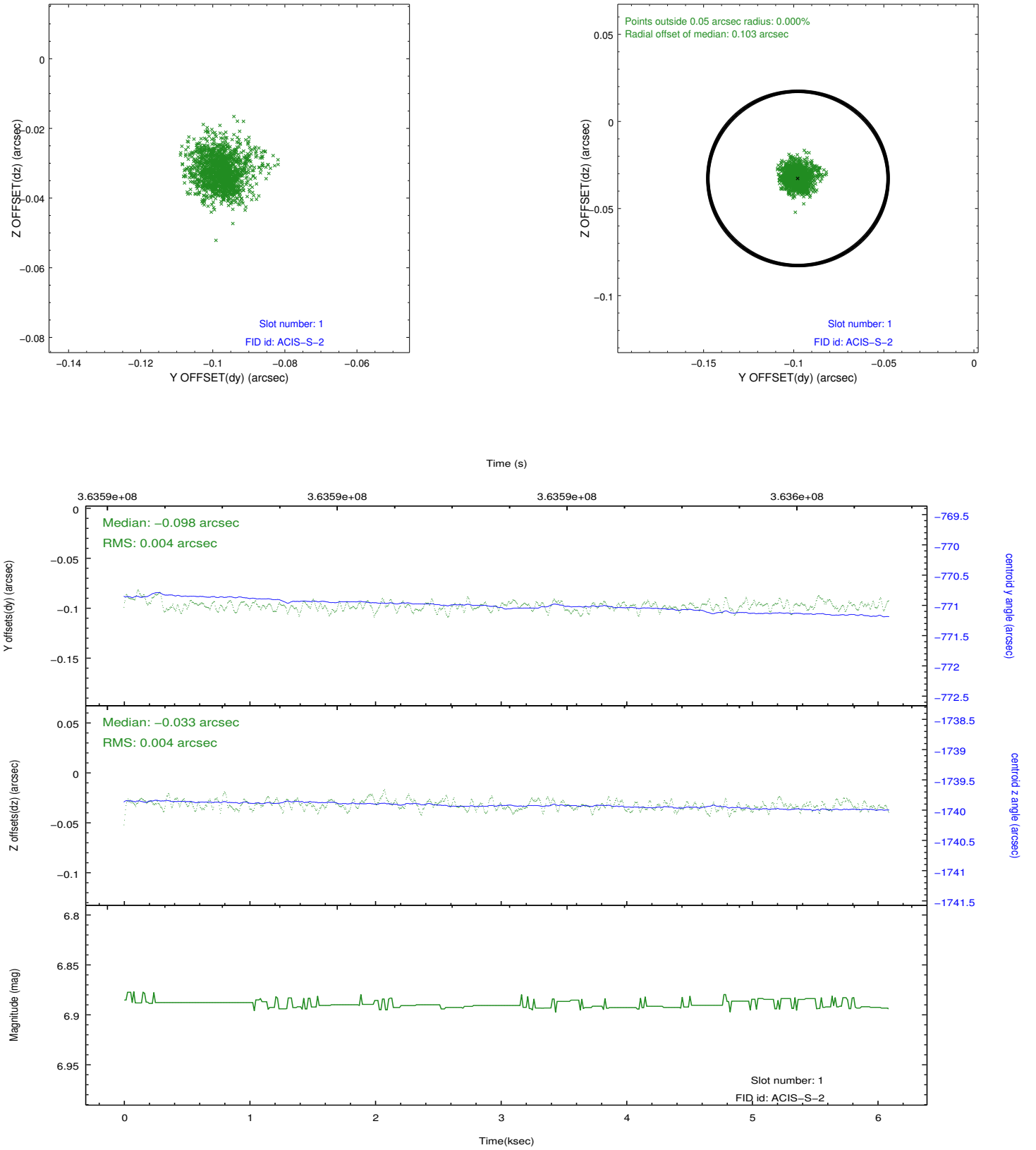


2.5 FID Slots

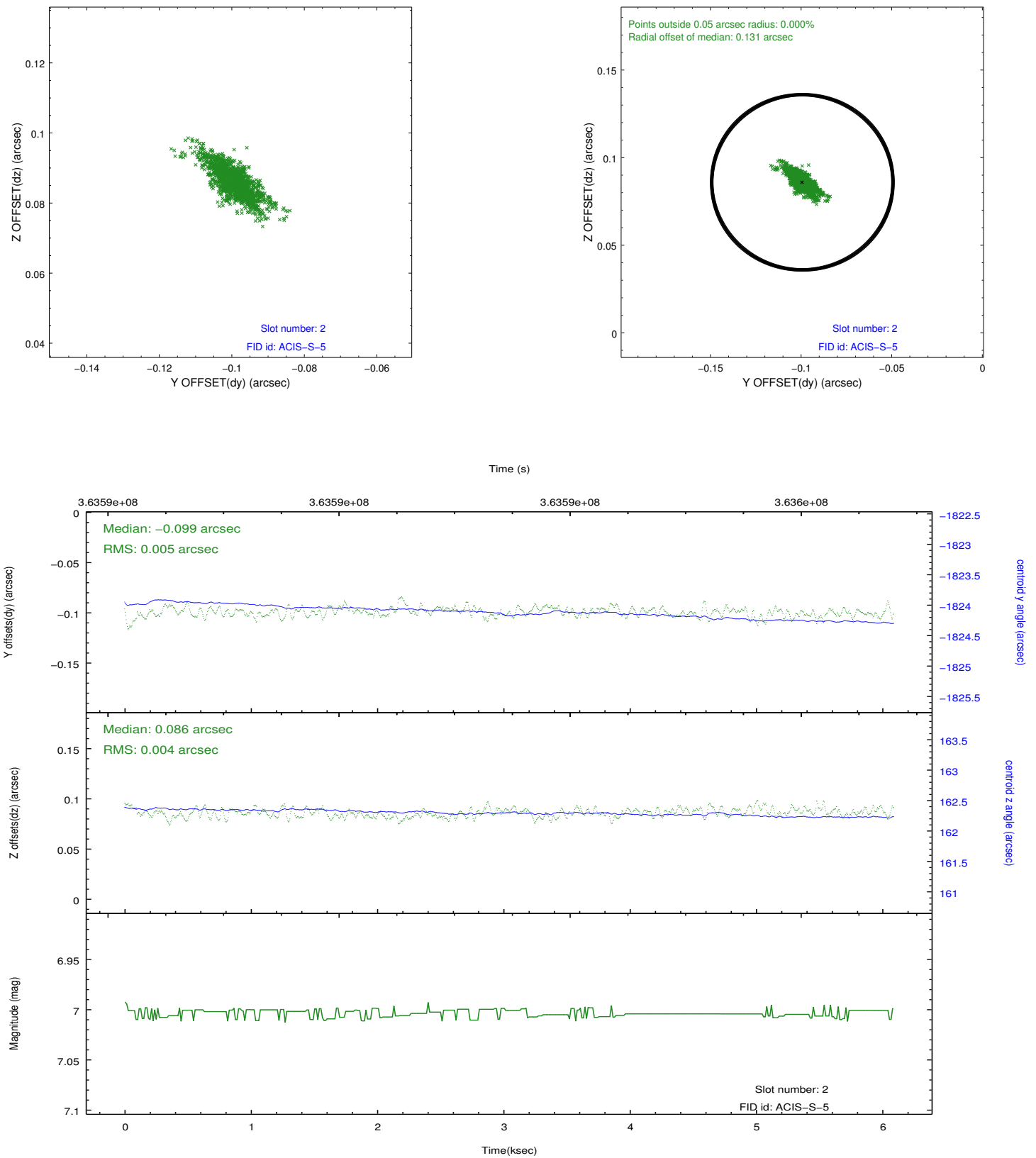
2.5.1 Slot 0



2.5.2 Slot 1



2.5.3 Slot 2



A Summary

A.1 Status

V&V Scientist	Jen Lauer
V&V Date (YYYY-MM-DD)	2012.06.13
V&V Edition	1
V&V Disposition and Status	OK
V&V Charge Time	5.47150004

A.2 Comments