

V&V Reference Report

L2 ASCDS Version : 8.4.5

Observation 10564 - L2 Version 2
Chandra X-Ray Center

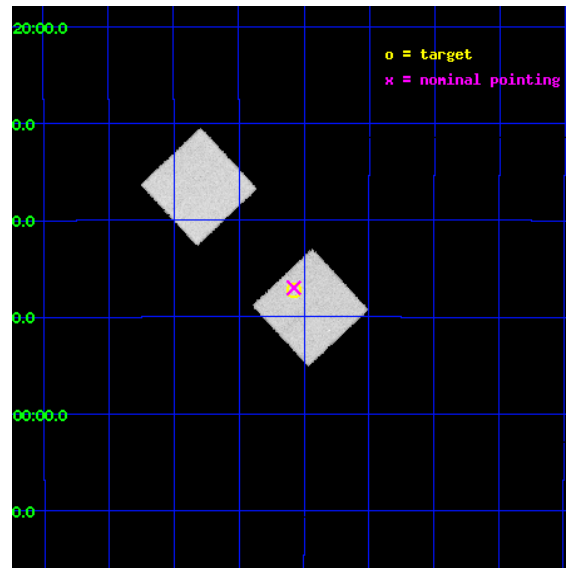
L2 Processing Date : Jun 14 2012

Contents

1	Front	2
2	OBI	3
2.1	OBI	3
2.1.1	Images	3
2.1.2	Bias	3
2.1.3	Parameters	4
2.1.4	Events	4
2.2	Compared Parameters	5
2.3	Aspect	6
2.4	Star Slots	9
2.4.1	Slot 3	9
2.4.2	Slot 4	10
2.4.3	Slot 5	11
2.4.4	Slot 6	12
2.4.5	Slot 7	13
2.5	FID Slots	14
2.5.1	Slot 0	14
2.5.2	Slot 1	15
2.5.3	Slot 2	16
A	Summary	17
A.1	Status	17
A.2	Comments	17

1 Front

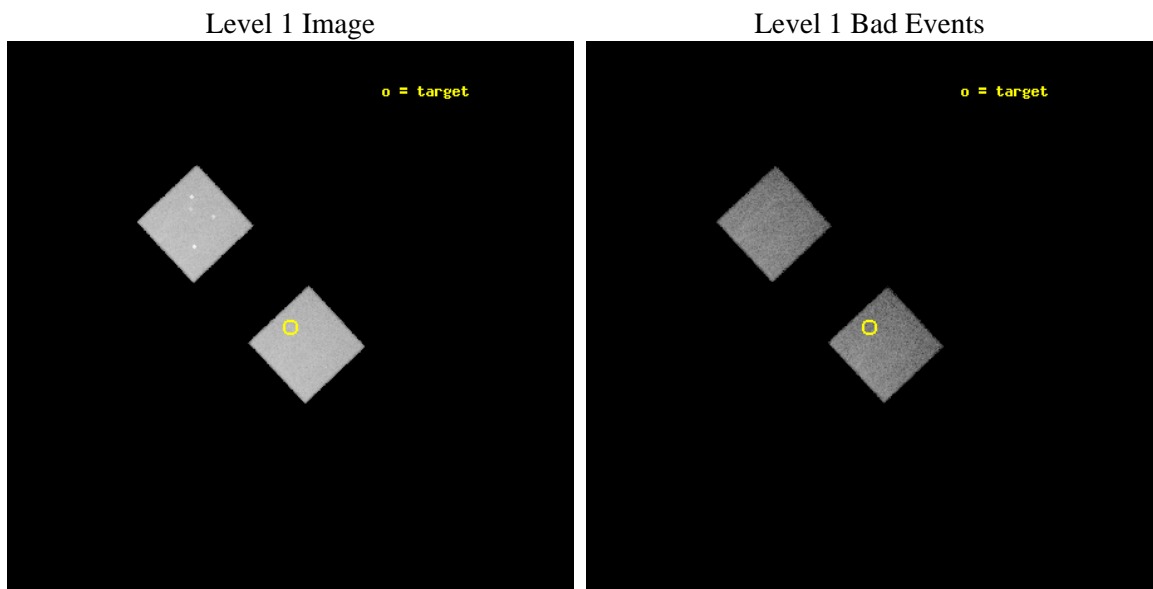
seq_num	600757	Sequence number
obs_id	10564	Observation id
title	Chandra Imaging of NGC 922 -- the closest collisional ring galaxy	
observer	Dr Andrea Prestwich	Principal investigator
object	NGC 922	Source name
dtcycle	0	
cycle	P	events from which exps? Prim/Second/Both
ra_targ	36.268333	Observer's specified target RA [deg]
dec_targ	-24.788056	Observer's specified target Dec [deg]
ra_nom	36.269408583078	Nominal RA [deg]
dec_nom	-24.78329741128	Nominal Dec [deg]
roll_nom	46.913632148822	Nominal Roll [deg]
revision	2	Processing version of data
ontime	10158.0	Sum of GTIs [s]
livetime	10020.913897877	Livetime [s]
ontime5	10158.0	Sum of GTIs [s]
ontime7	10158.0	Sum of GTIs [s]
l2events	135921	Number of level 2 events



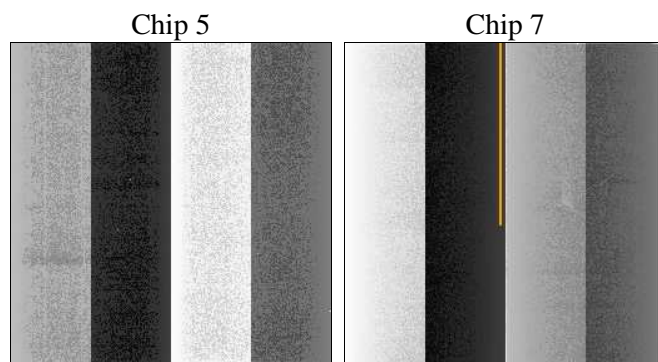
2 OBI

2.1 OBI

2.1.1 Images



2.1.2 Bias



2.1.3 Parameters

obi_num	2	Obi number	sched_exp_time	10000.000000	[s] Scheduled observation exposure time
ascdsver	8.4.5	Processing system revision	ontime	10158.0	Sum of GTIs [s]
caldsver	4.4.10	 	ontime5	10158.0	Sum of GTIs [s]
date	2012-06-14T12:29:32	Date and time of file creation	ontime7	10158.0	Sum of GTIs [s]
revision	2	Processing version of data	l1events	330351	Number of level 1 events

2.1.4 Events

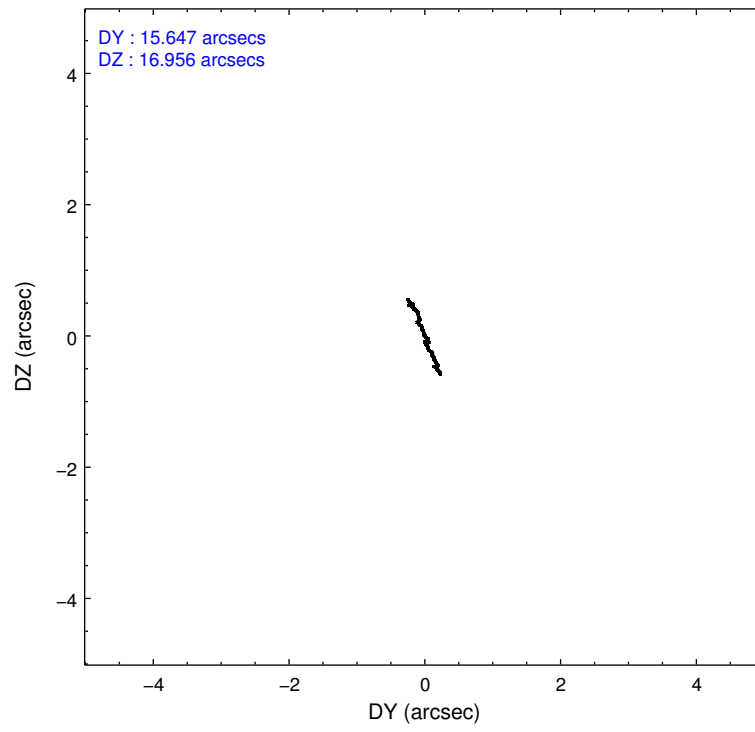
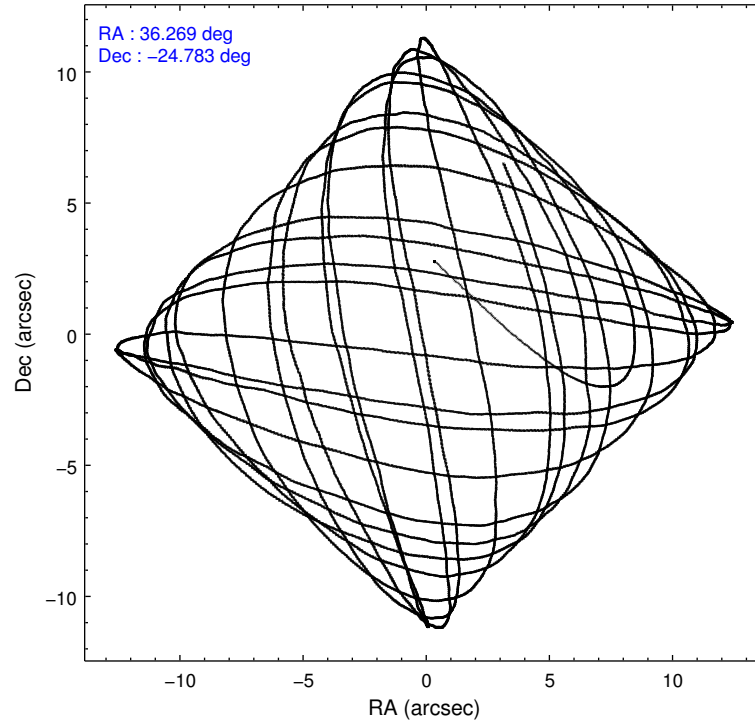
	ccd 5	ccd 7
level 1 events	175114	155237
rejected events	95586	91596
rejected %	54%	59%

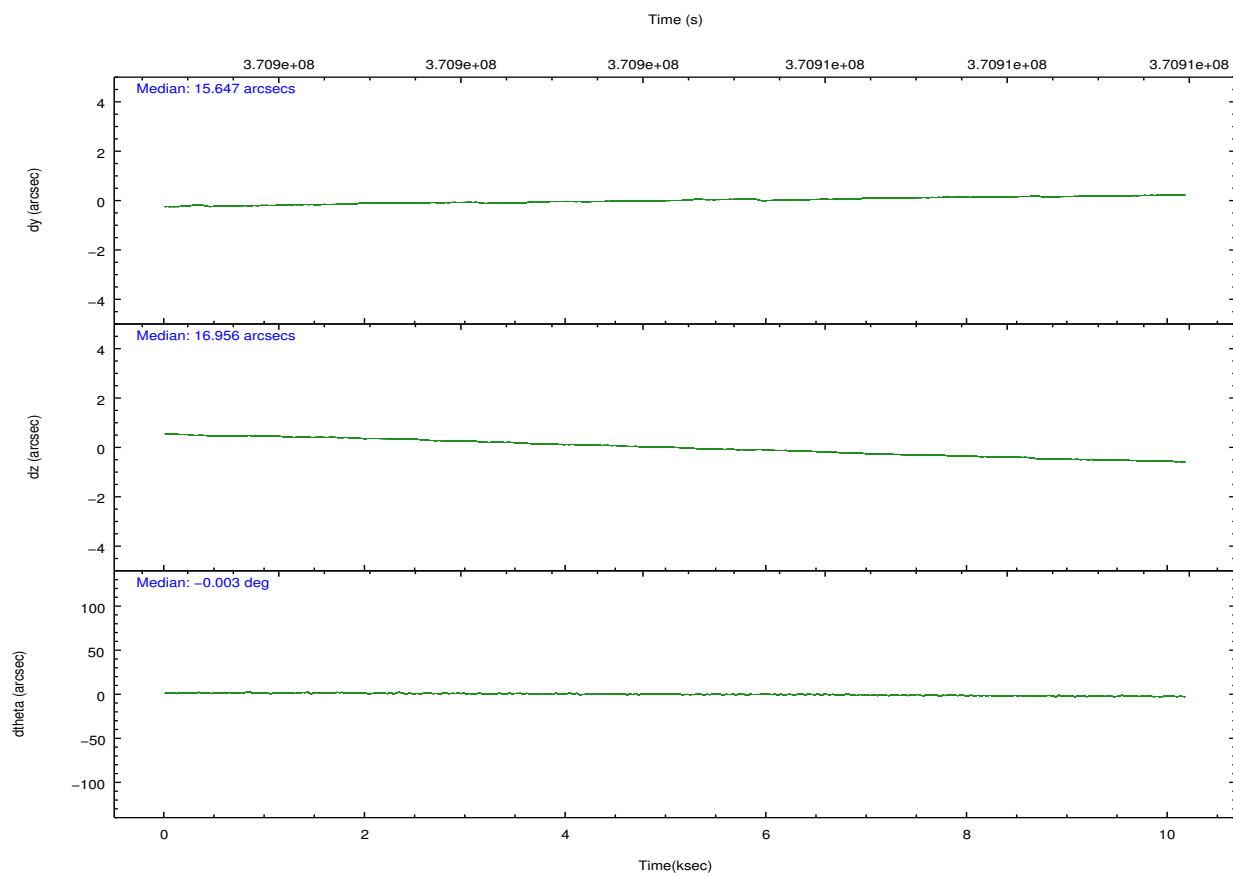
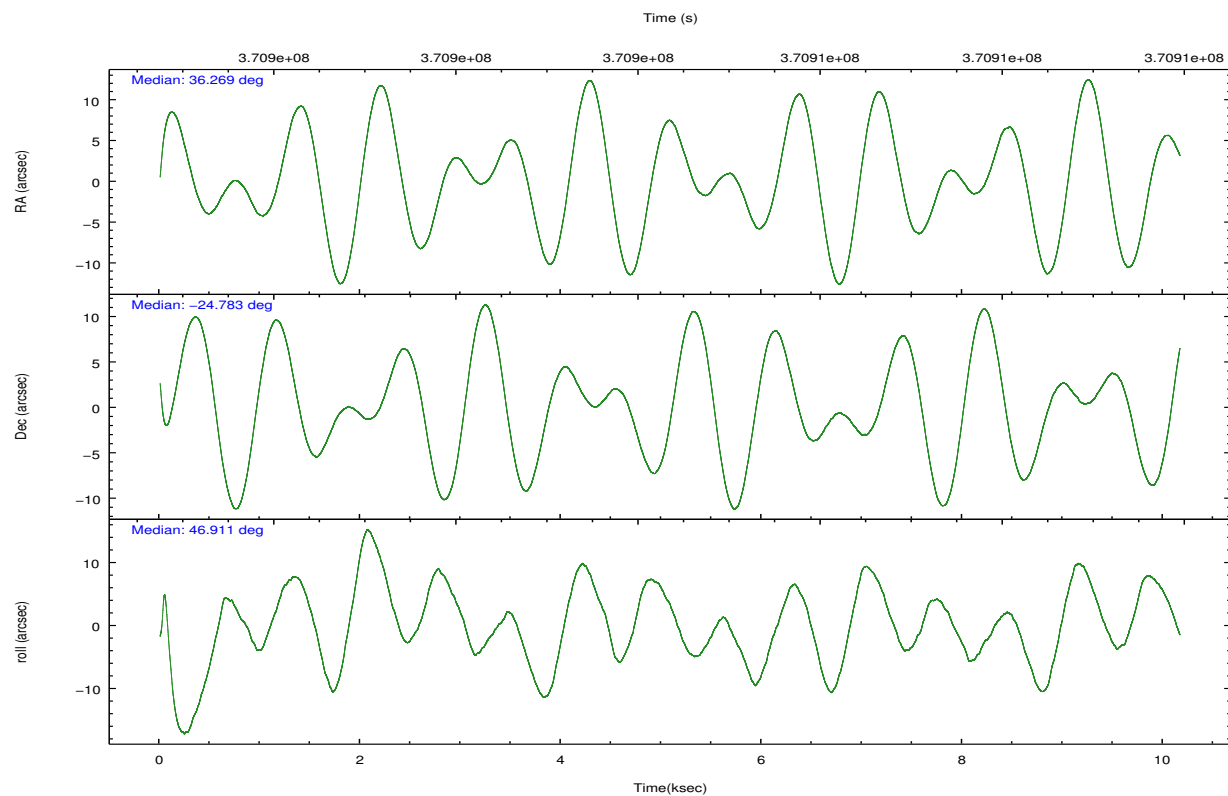
	ccd 5	ccd 7
grade 0 events	8758	5547
	5%	3%
grade 1 events	284	175
	0%	0%
grade 2 events	24757	13421
	14%	8%
grade 3 events	2959	5576
	1%	3%
grade 4 events	2761	5543
	1%	3%
grade 5 events	12443	14475
	7%	9%
grade 6 events	42743	35329
	24%	22%
grade 7 events	80409	75171
	45%	48%

2.2 Compared Parameters

Parameter	Planned	Actual	Parameter	Planned	Actual
Instrument	ACIS	ACIS	Obspar format version number	7	7
Detector	ACIS-57	ACIS-57	Obspar file type	PREDICTED	ACTUAL
Grating	NONE	NONE	Obspar update status	NONE	UPDATED
Data mode	VFAINT	VFAINT	CCD I0 on	N	N
Observation mode	POINTING	POINTING	CCD I1 on	N	N
[deg] Pointing RA	36.262976	36.26940858307752	CCD I2 on	N	N
[deg] Pointing Dec	-24.810021	-24.78329741128045	CCD I3 on	N	N
[deg] Pointing Roll	46.754281	46.91363214882212	CCD S0 on	N	N
[mm] SIM focus pos	-0.684267	-0.6828225247311905	CCD S1 on	O1	Y
[mm] SIM defocus	0	0.001444936568705701	CCD S2 on	N	N
[mm] SIM translation stage pos	-190.132523	-190.1400660498719	CCD S3 on	Y	Y
[mm] SIM translation stage offset	0	0.00754346686406393	CCD S4 on	N	N
[s] Observation start time (MET)	370899441.184000	370898364.68129	CCD S5 on	N	N
Observation start date	2009-10-02T19:36:15	2009-10-02T19:19:24	Number of optional ACIS chips dropped	0	0
[s] Observation end time (MET)	370909441.184000	370910598.5694	On-chip summing requested	N	N
Observation end date	2009-10-02T22:22:55	2009-10-02T22:43:18	Subarray requested	NONE	NONE
Read mode	TIMED	TIMED	Alternating exposures requested	N	N
			[s] Primary exposure time	0.000000	3

2.3 Aspect



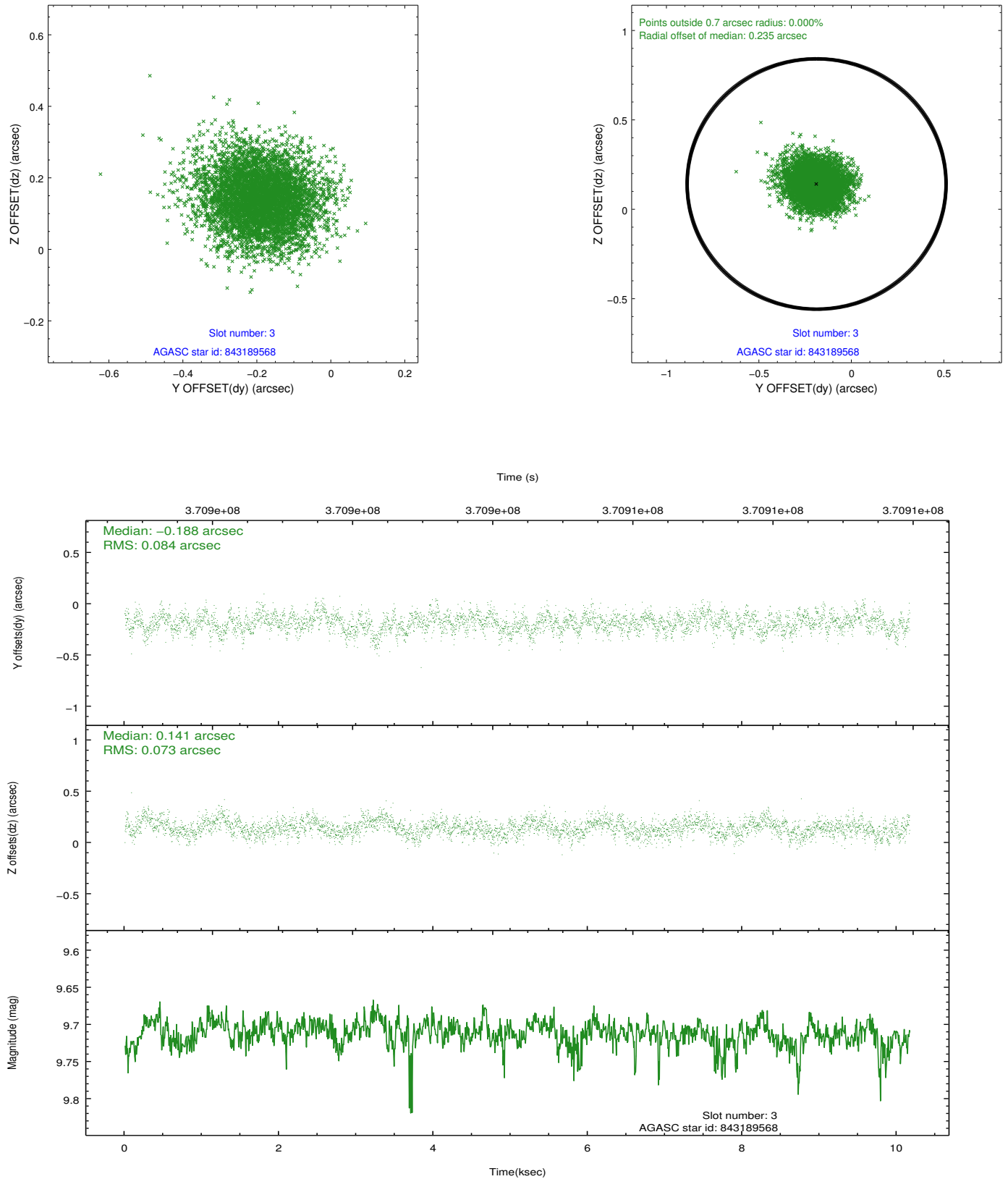


Slot Statistics

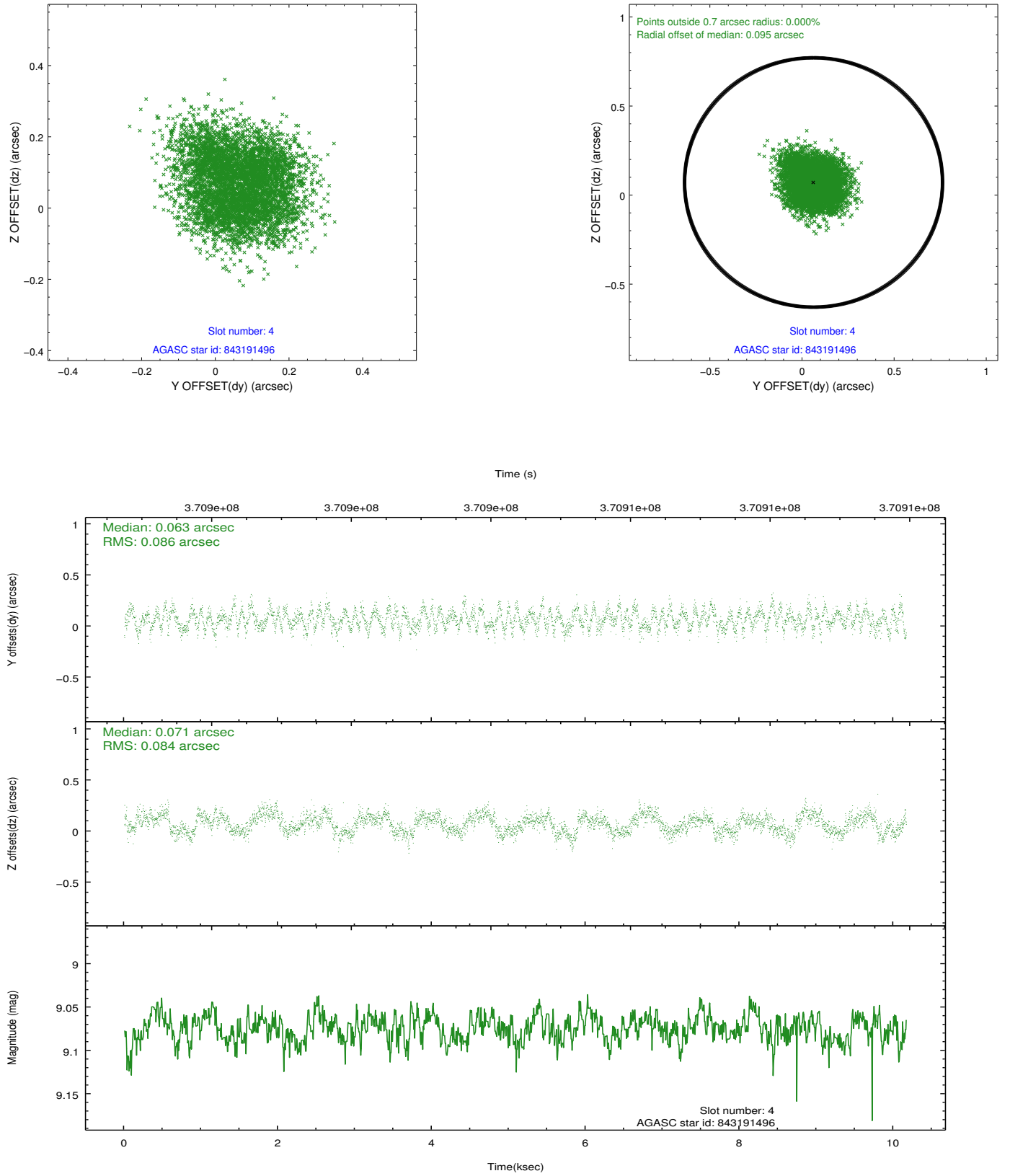
slot	status	id	mag	n_pts	med_dy	med_dz	dr1	dr2	ra	dec	mean_y	mean_z
0	FID	ACIS-S-2	6.87	2478	-0.069	-0.022	0.012	0.019	0.000000	0.000000	-768.73	-1738.38
1	FID	ACIS-S-4	6.96	2479	0.151	0.039	0.006	0.013	0.000000	0.000000	2144.56	169.57
2	FID	ACIS-S-5	6.98	2479	-0.113	-0.009	0.012	0.022	0.000000	0.000000	-1820.92	163.85
3	GUIDE	843189568	9.71	4948	-0.188	0.141	0.117	0.192	36.830938	-24.518772	2035.63	-638.90
4	GUIDE	843191496	9.07	4952	0.063	0.071	0.130	0.199	37.214683	-24.812275	2118.22	-2278.70
5	GUIDE	843192616	9.72	4952	-0.047	-0.283	0.187	0.310	36.294956	-24.031638	2113.86	1842.92
6	GUIDE	843193880	9.43	4931	0.153	0.326	0.127	0.203	36.065163	-25.094581	-1187.49	-231.50
7	GUIDE	843205584	10.20	4955	0.039	-0.240	0.176	0.291	35.361815	-24.743207	-1850.54	2304.27

2.4 Star Slots

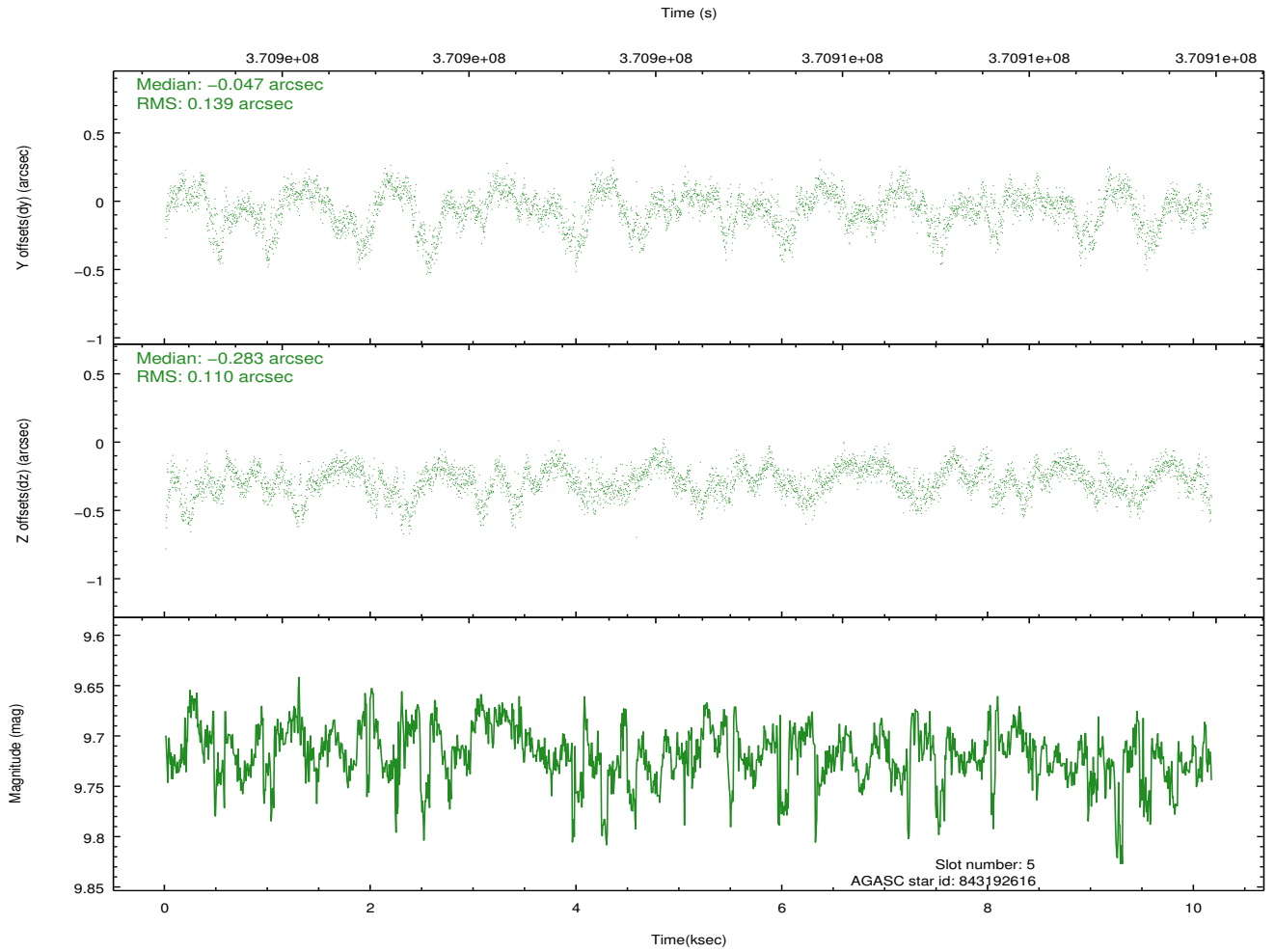
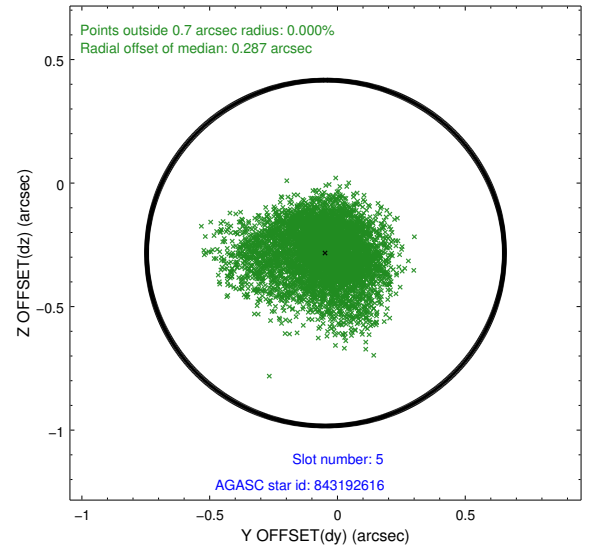
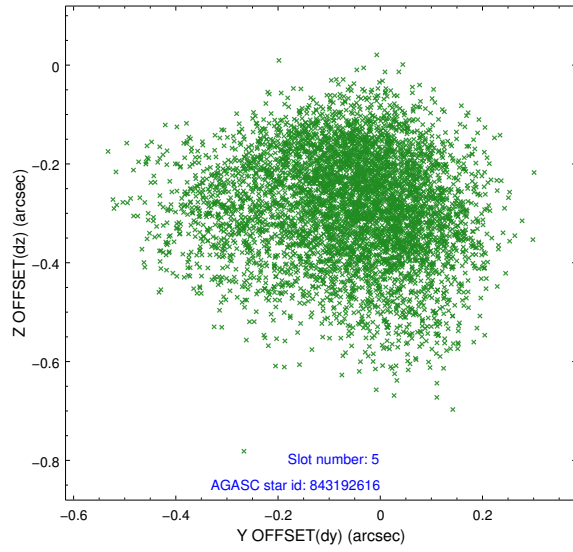
2.4.1 Slot 3



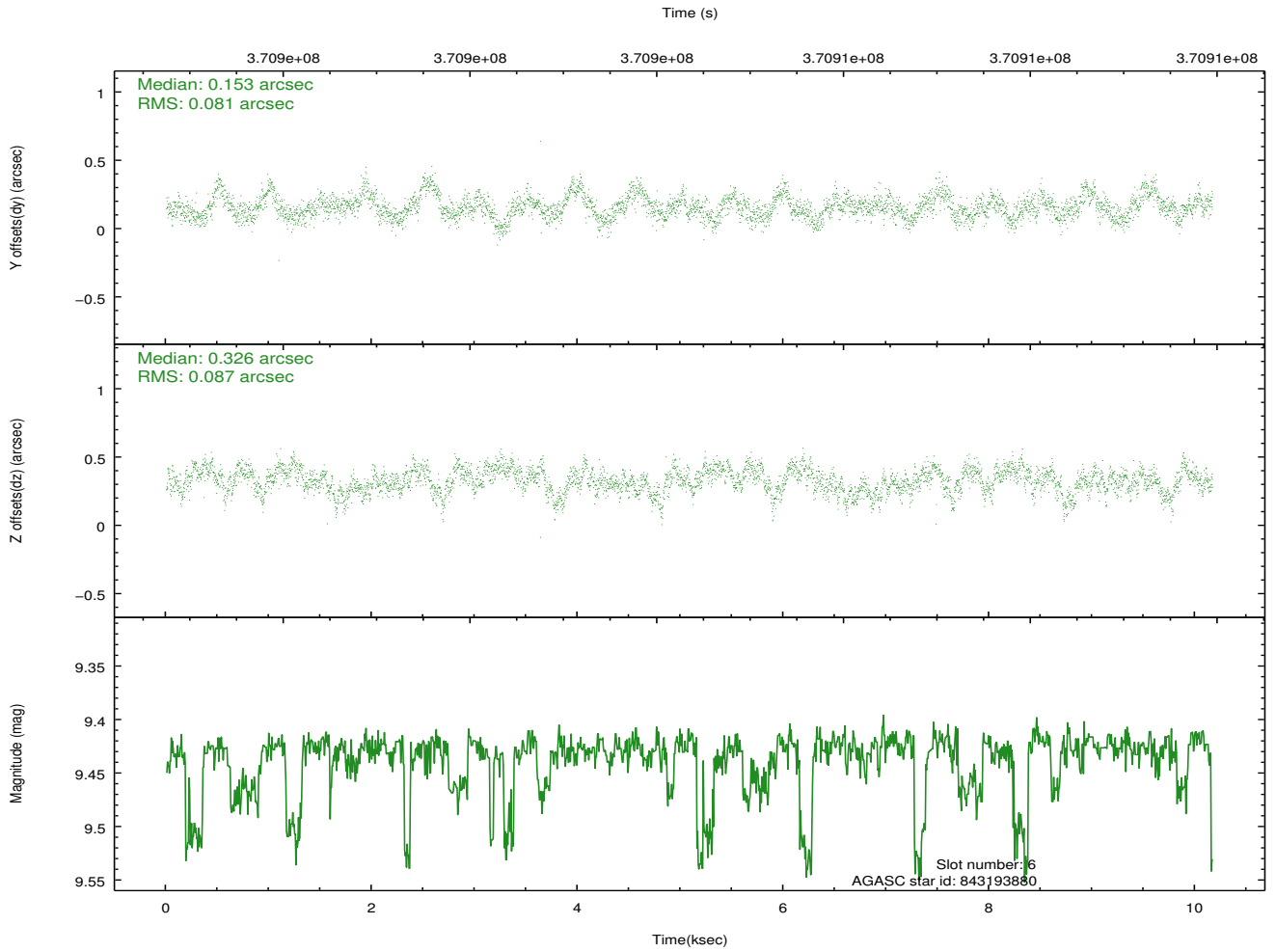
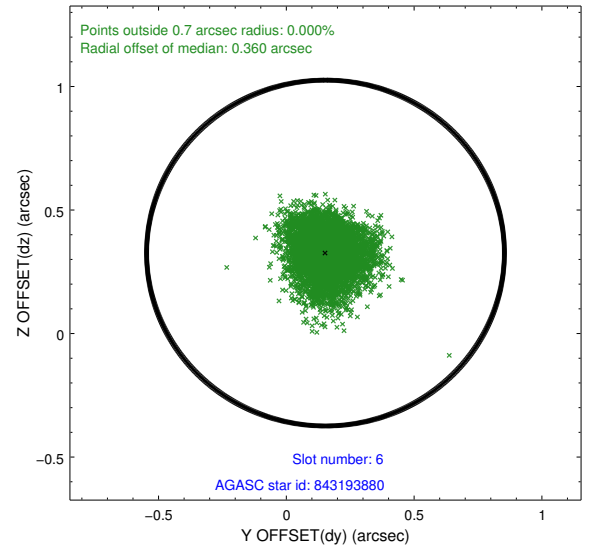
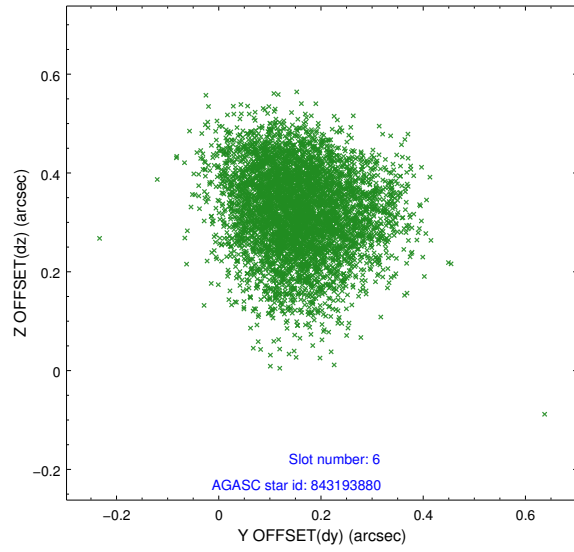
2.4.2 Slot 4



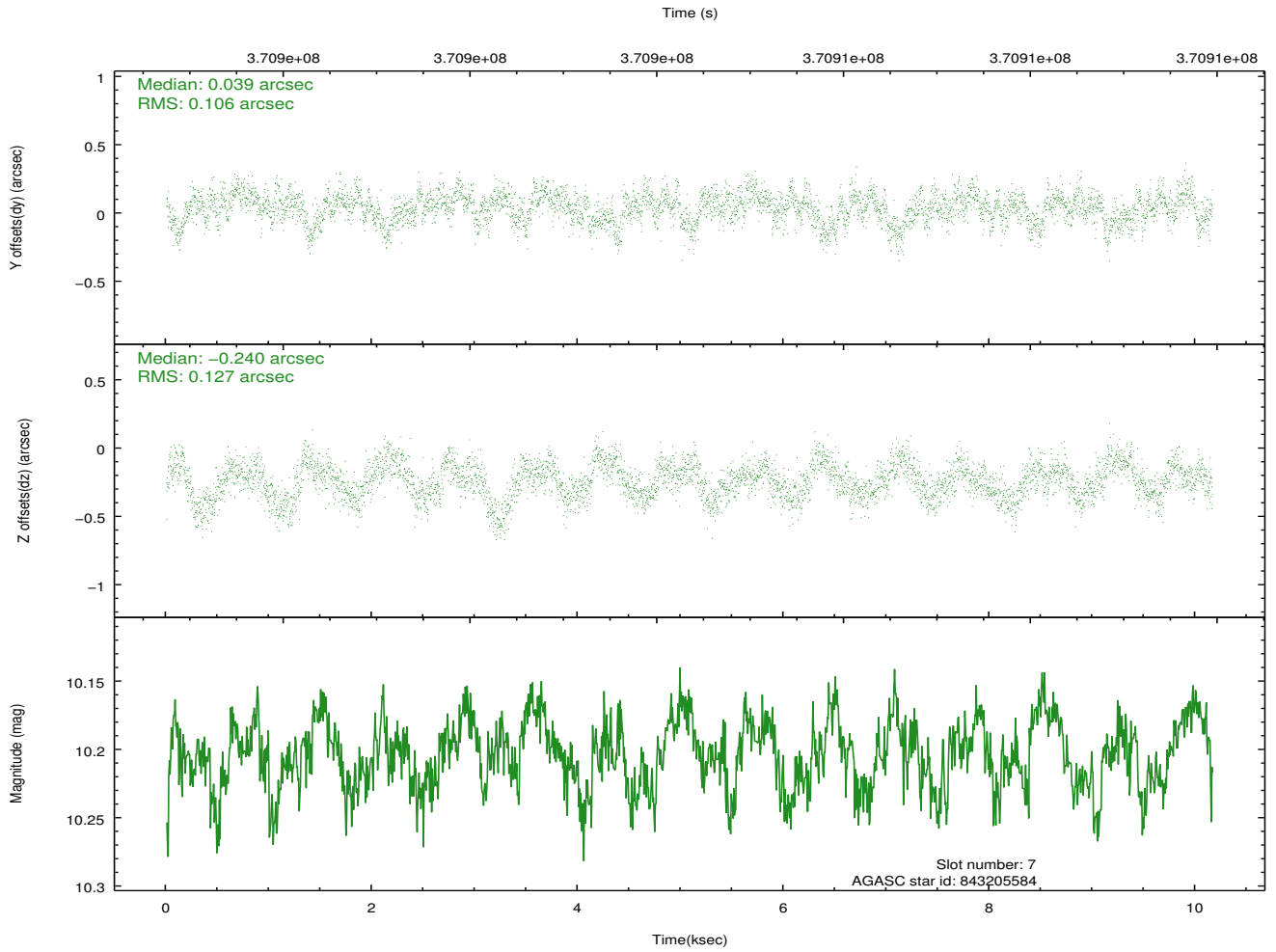
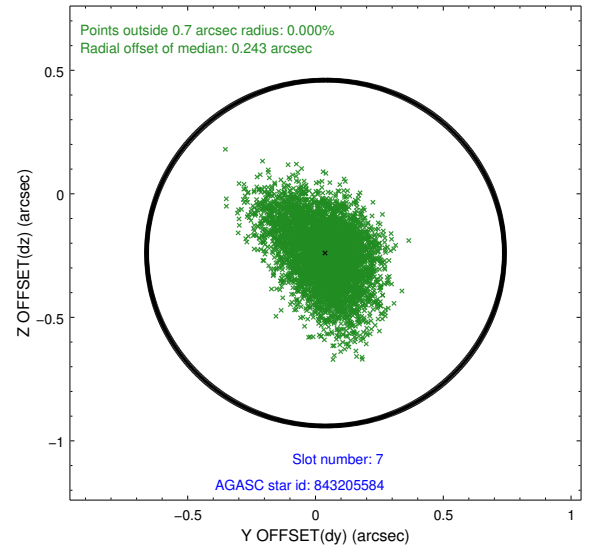
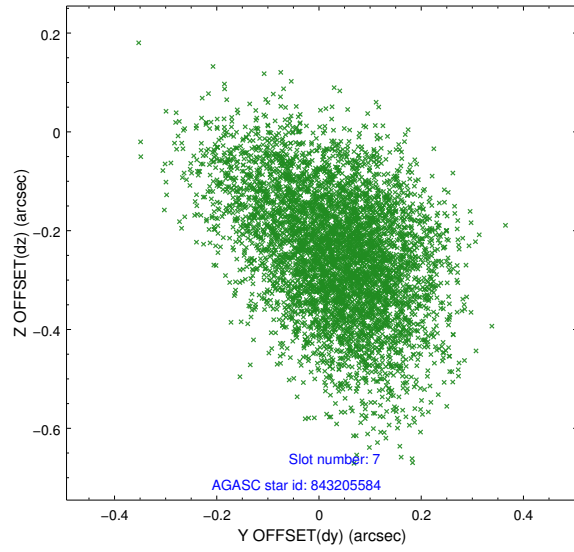
2.4.3 Slot 5



2.4.4 Slot 6

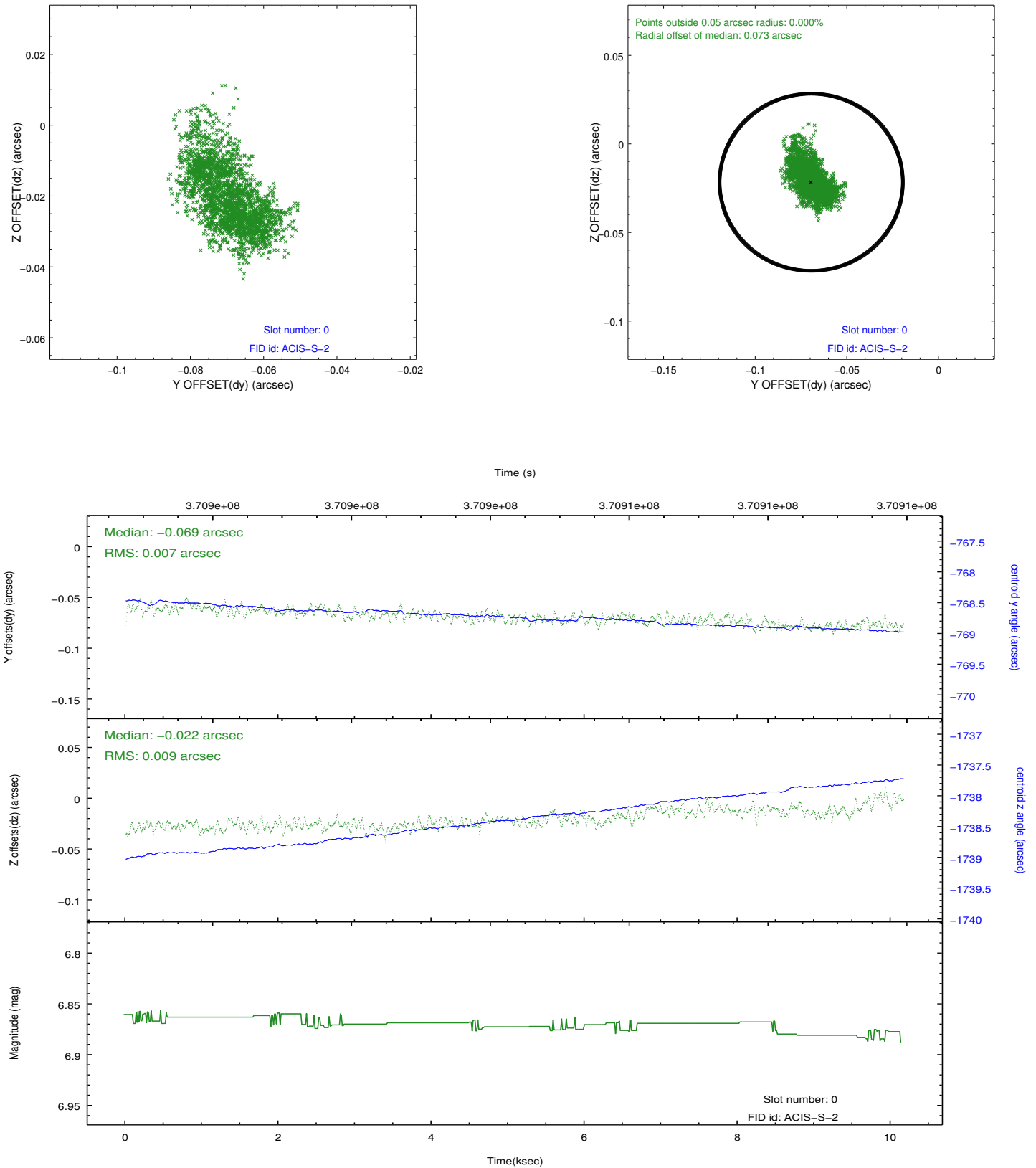


2.4.5 Slot 7

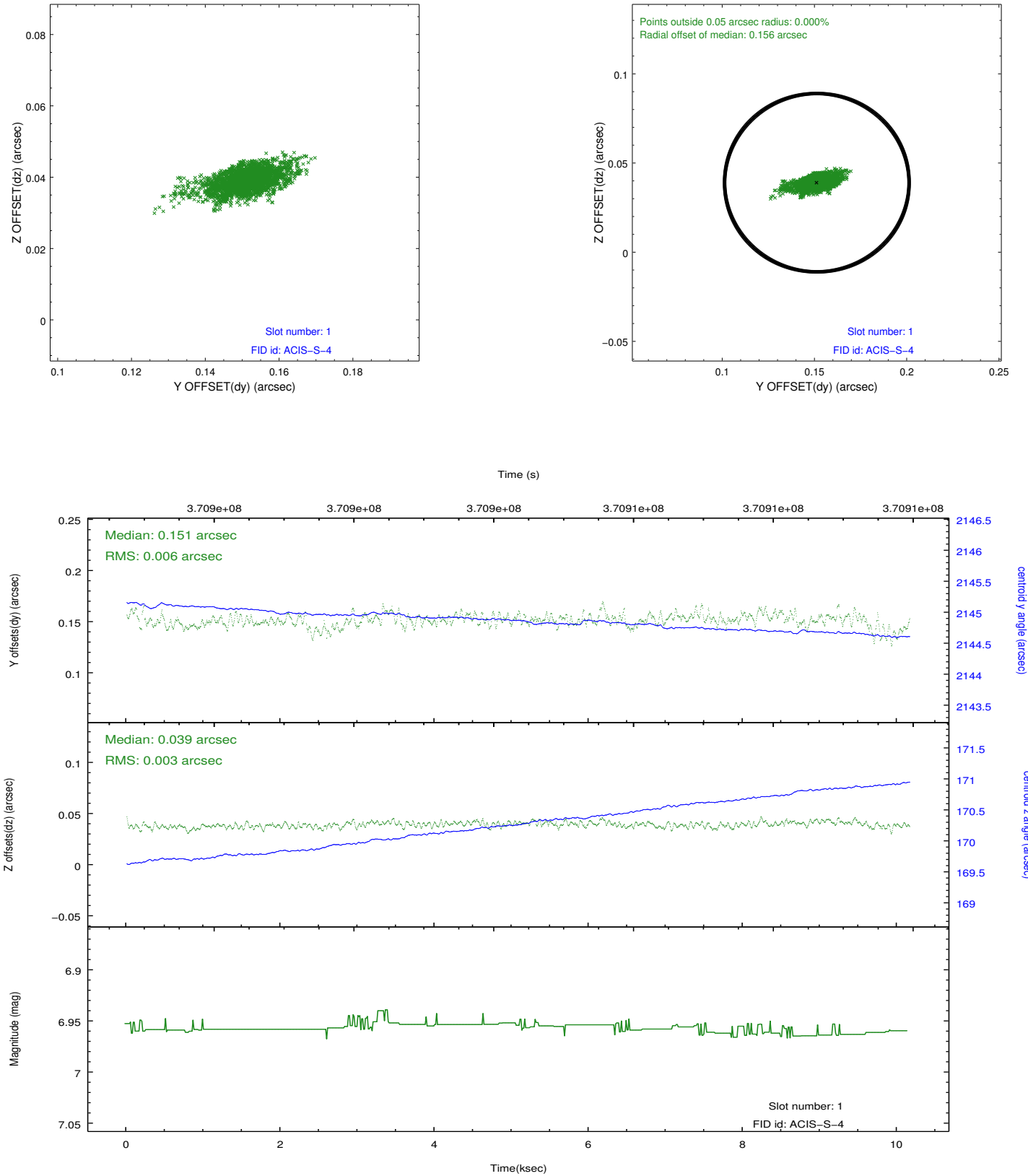


2.5 FID Slots

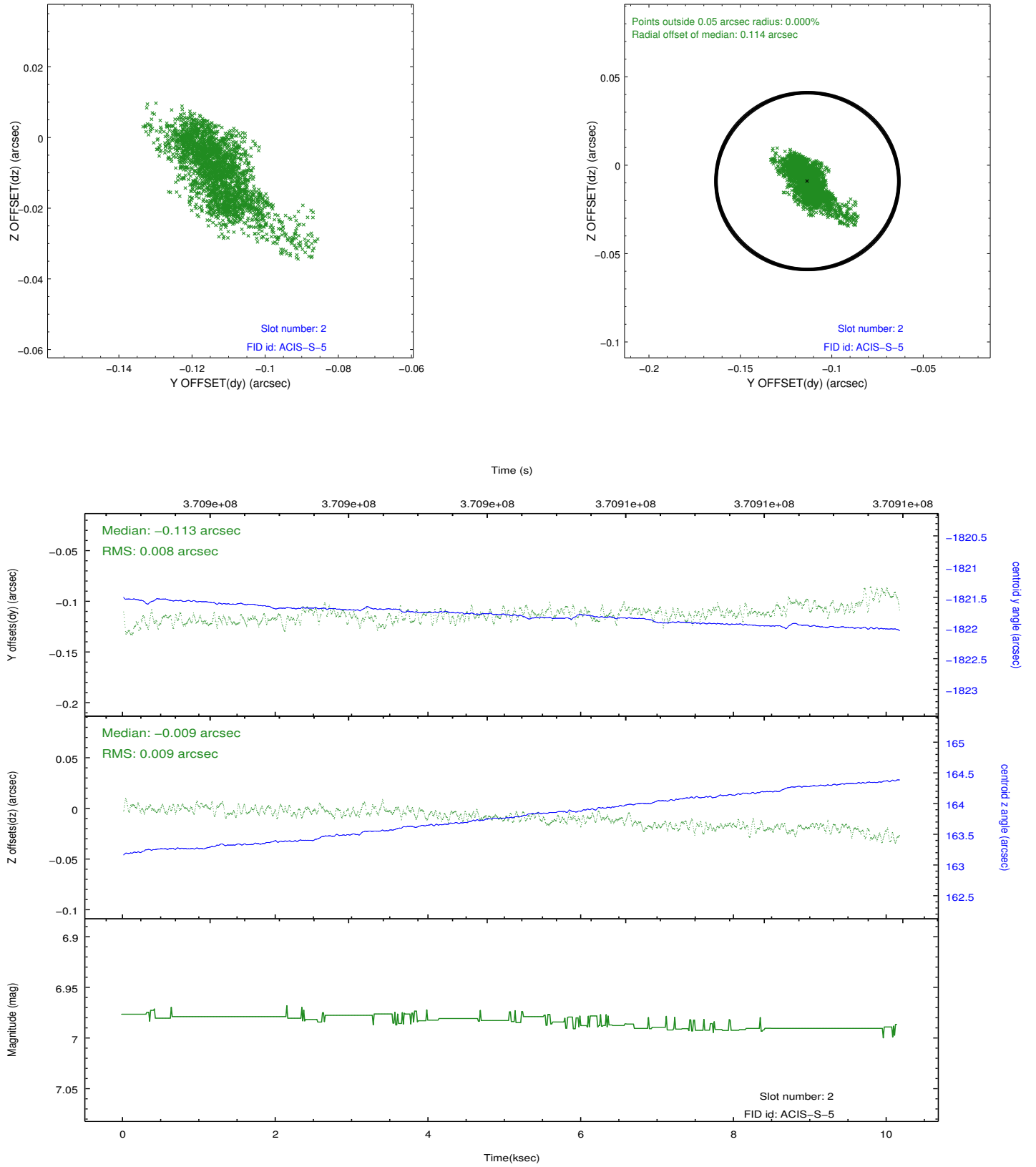
2.5.1 Slot 0



2.5.2 Slot 1



2.5.3 Slot 2



A Summary

A.1 Status

V&V Scientist	Beth Sundheim
V&V Date (YYYY-MM-DD)	2012.06.18
V&V Edition	1
V&V Disposition and Status	OK
V&V Charge Time	10.158

A.2 Comments

Joint proposal with HST.