

V&V Reference Report

L2 ASCDS Version : 8.4.4

Observation 10547 - L2 Version 2
Chandra X-Ray Center

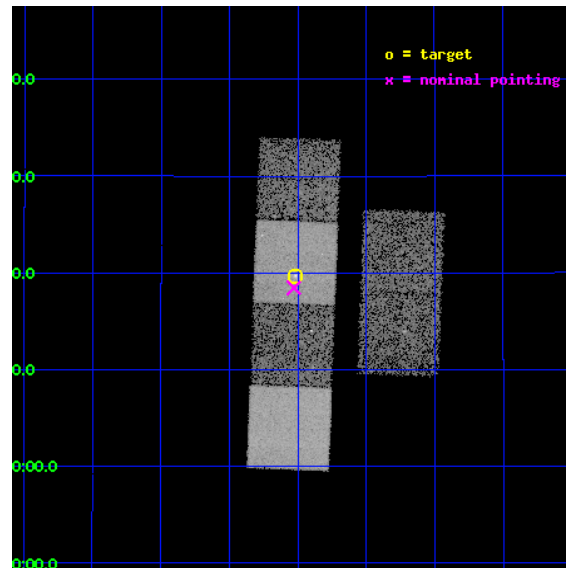
L2 Processing Date : May 25 2012

Contents

1	Front	2
2	OBI	3
2.1	OBI	3
2.1.1	Images	3
2.1.2	Bias	3
2.1.3	Parameters	4
2.1.4	Events	4
2.2	Compared Parameters	5
2.3	Aspect	6
2.4	Star Slots	9
2.4.1	Slot 3	9
2.4.2	Slot 4	10
2.4.3	Slot 5	11
2.4.4	Slot 6	12
2.4.5	Slot 7	13
2.5	FID Slots	14
2.5.1	Slot 0	14
2.5.2	Slot 1	15
2.5.3	Slot 2	16
A	Summary	17
A.1	Status	17
A.2	Comments	17

1 Front

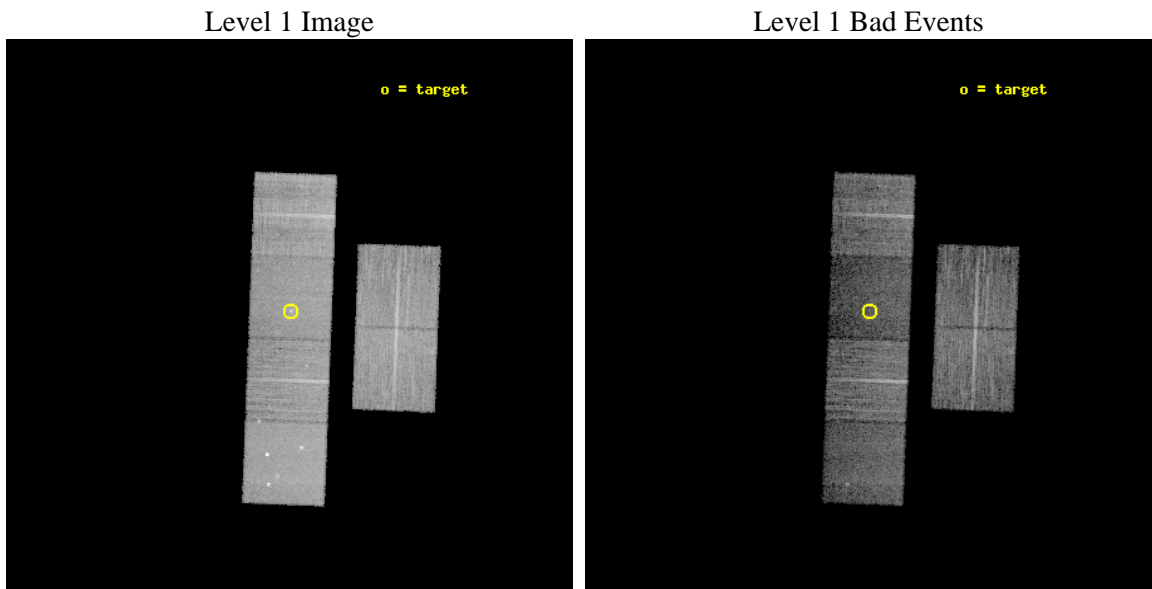
seq_num	600740	Sequence number
obs_id	10547	Observation id
title	A Chandra Study of Field Early-Type Galaxies	Proposal title
observer	Dr. John Mulchaey	Principal investigator
object	NGC 57	Source name
dtcycle	0	
cycle	P	events from which exps? Prim/Second/Both
ra_targ	3.87875	Observer's specified target RA [deg]
dec_targ	17.328417	Observer's specified target Dec [deg]
ra_nom	3.882207718994	Nominal RA [deg]
dec_nom	17.307675879423	Nominal Dec [deg]
roll_nom	272.1556388048	Nominal Roll [deg]
revision	2	Processing version of data
ontime	10041.344530761	Sum of GTIs [s]
livetime	9914.194980141	Livetime [s]
ontime2	10041.385570765	Sum of GTIs [s]
ontime3	10041.221410751	Sum of GTIs [s]
ontime5	10041.303490758	Sum of GTIs [s]
ontime6	10038.021420479	Sum of GTIs [s]
ontime7	10041.344530761	Sum of GTIs [s]
ontime8	10041.180370748	Sum of GTIs [s]
l2events	112014	Number of level 2 events



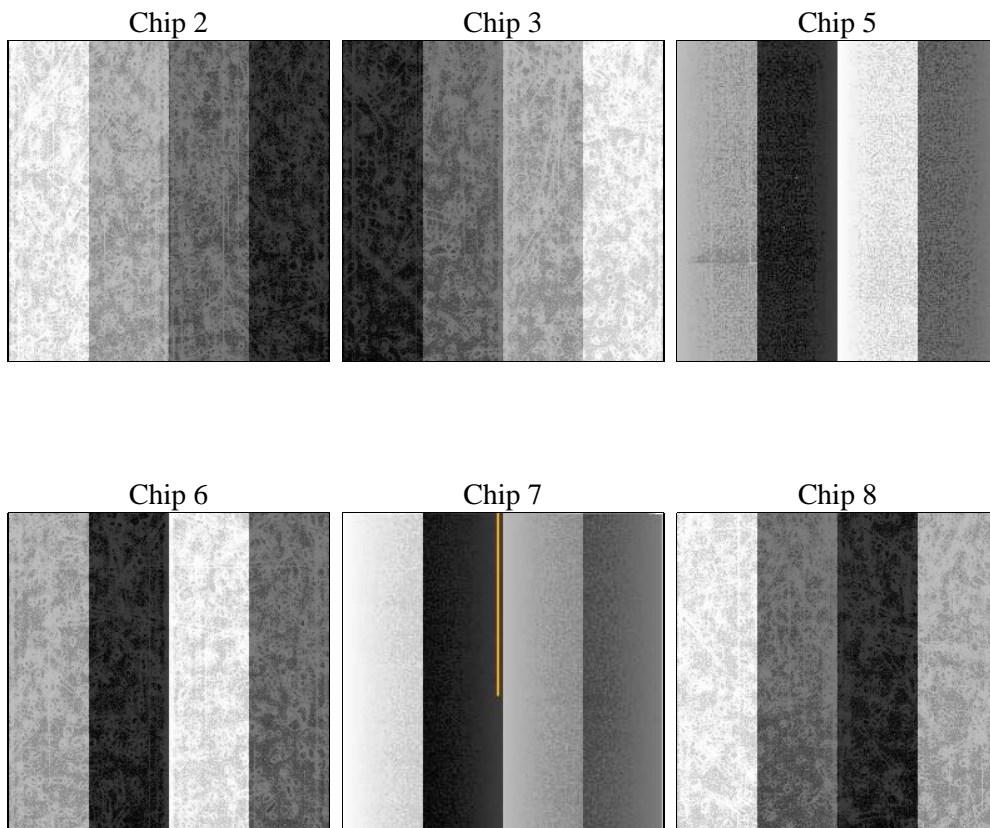
2 OBI

2.1 OBI

2.1.1 Images



2.1.2 Bias



2.1.3 Parameters

obi_num	0	Obi number	sched_exp_time	10000.000000	[s] Scheduled observation exposure time
ascdsver	8.4.4	Processing system revision	ontime	10041.344530761	Sum of GTIs [s]
caldsver	4.4.9	 	ontime2	10041.385570765	Sum of GTIs [s]
date	2012-05-25T05:21:08	Date and time of file creation	ontime3	10041.221410751	Sum of GTIs [s]
revision	2	Processing version of data	ontime5	10041.303490758	Sum of GTIs [s]
			ontime6	10038.021420479	Sum of GTIs [s]
			ontime7	10041.344530761	Sum of GTIs [s]
			ontime8	10041.180370748	Sum of GTIs [s]
			l1events	504092	Number of level 1 events

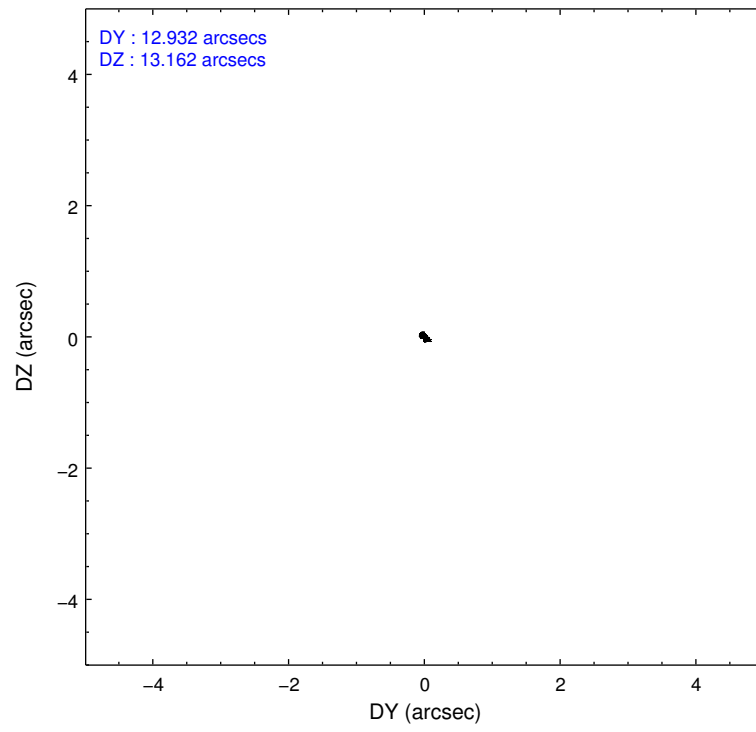
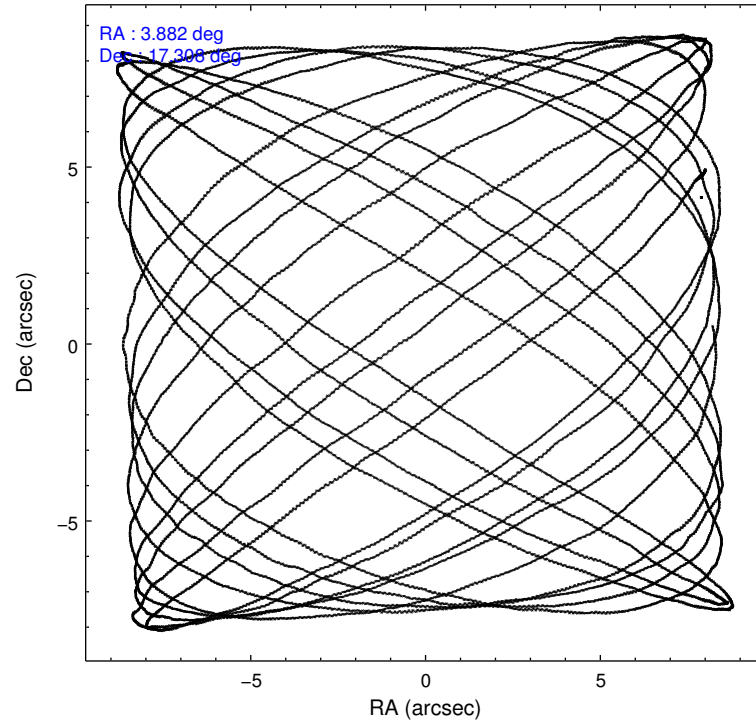
2.1.4 Events

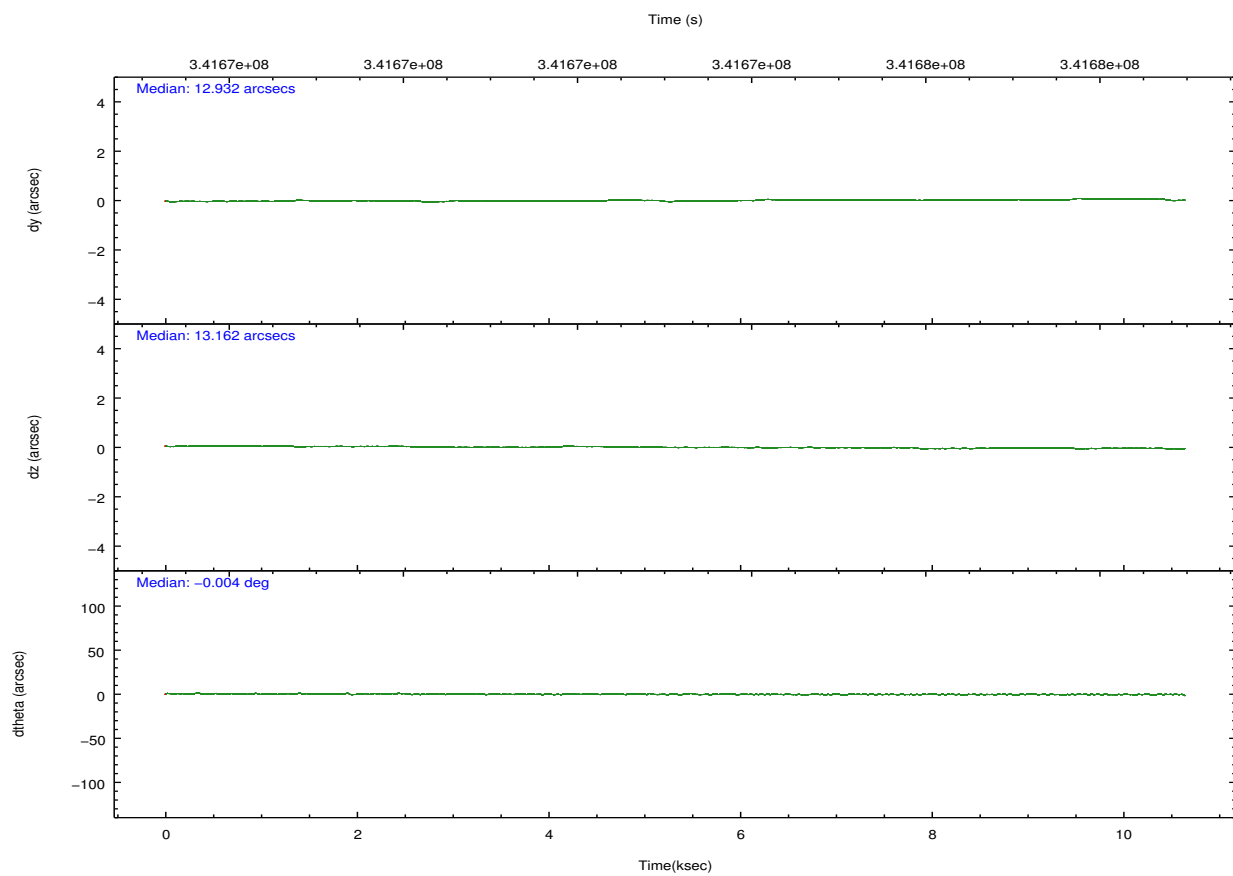
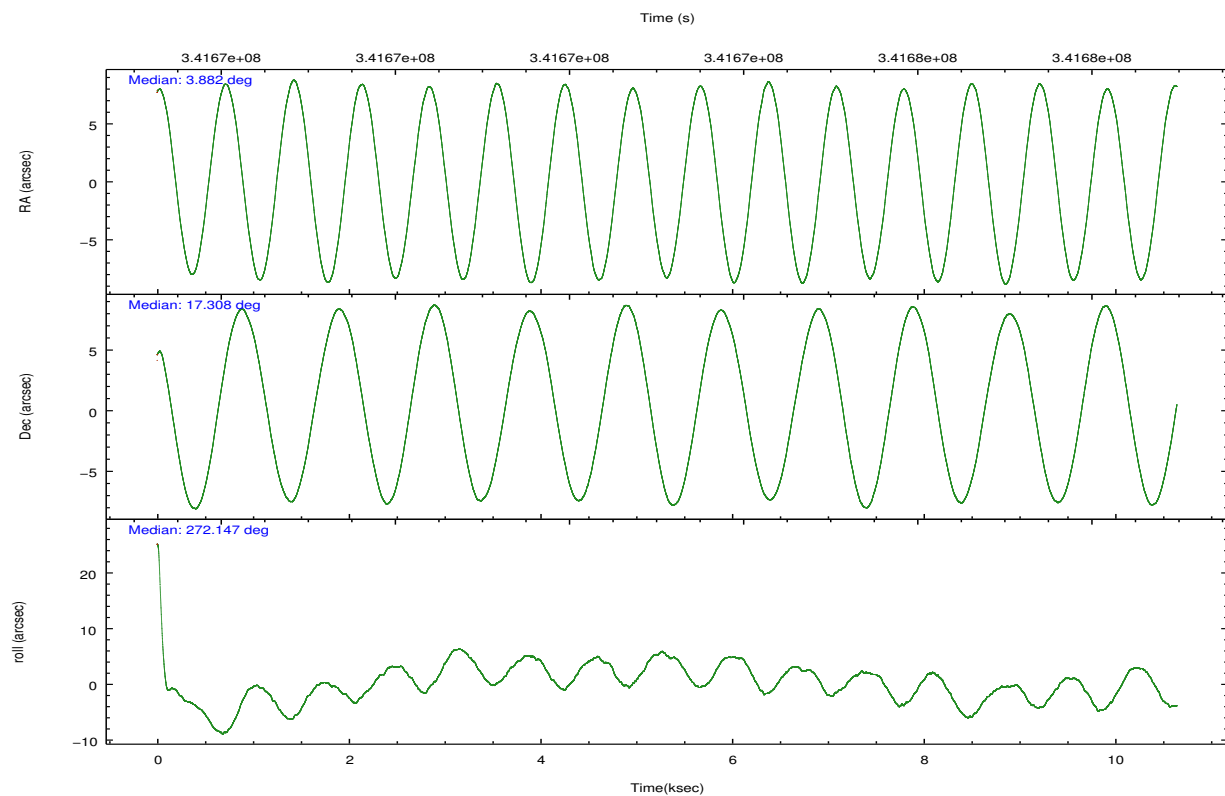
	ccd 2	ccd 3	ccd 5	ccd 6	ccd 7	ccd 8		ccd 2	ccd 3	ccd 5	ccd 6	ccd 7	ccd 8
level 1 events	81738	72772	100622	77323	76122	95515	grade 0 events	2858	2451	8312	3100	4130	6850
rejected events	74169	65808	45892	69135	38077	71292		3%	3%	8%	4%	5%	7%
rejected %	90%	90%	45%	89%	50%	74%	grade 1 events	50	42	376	45	117	81
								0%	0%	0%	0%	0%	0%
							grade 2 events	1856	1594	15916	1760	8275	5637
								2%	2%	15%	2%	10%	5%
							grade 3 events	754	761	2361	885	3701	2824
								0%	1%	2%	1%	4%	2%
							grade 4 events	790	831	2175	855	3679	2547
								0%	1%	2%	1%	4%	2%
							grade 5 events	2169	2593	7869	2653	8105	4085
								2%	3%	7%	3%	10%	4%
							grade 6 events	1314	1332	26009	1594	18293	6372
								1%	1%	25%	2%	24%	6%
							grade 7 events	71947	63168	37604	66431	29822	67119
								88%	86%	37%	85%	39%	70%

2.2 Compared Parameters

Parameter	Planned	Actual	Parameter	Planned	Actual
Instrument	ACIS	ACIS	Obspar format version number	7	7
Detector	ACIS-235678	ACIS-235678	Obspar file type	PREDICTED	ACTUAL
Grating	NONE	NONE	Obspar update status	NONE	UPDATED
Data mode	VFAINT	VFAINT	CCD I0 on	N	N
Observation mode	POINTING	POINTING	CCD I1 on	N	N
[deg] Pointing RA	3.866613	3.882207718993971	CCD I2 on	O3	Y
[deg] Pointing Dec	17.330677	17.30767587942266	CCD I3 on	O4	Y
[deg] Pointing Roll	272.003613	272.1556388047957	CCD S0 on	N	N
[mm] SIM focus pos	-0.684267	-0.6828225247311905	CCD S1 on	O1	Y
[mm] SIM defocus	0	0.001444936568705701	CCD S2 on	O2	Y
[mm] SIM translation stage pos	-190.132523	-190.1425803651734	CCD S3 on	Y	Y
[mm] SIM translation stage offset	0	0.01005778216563158	CCD S4 on	O5	Y
[s] Observation start time (MET)	341668445.184000	341667211.81414	CCD S5 on	N	N
Observation start date	2008-10-29T11:53:00	2008-10-29T11:33:31	Number of optional ACIS chips dropped	0	0
[s] Observation end time (MET)	341678445.184000	341679509.25225	On-chip summing requested	N	N
Observation end date	2008-10-29T14:39:40	2008-10-29T14:58:29	Subarray requested	NONE	NONE
Read mode	TIMED	TIMED	Alternating exposures requested	N	N
			[s] Primary exposure time	0.000000	3.2

2.3 Aspect



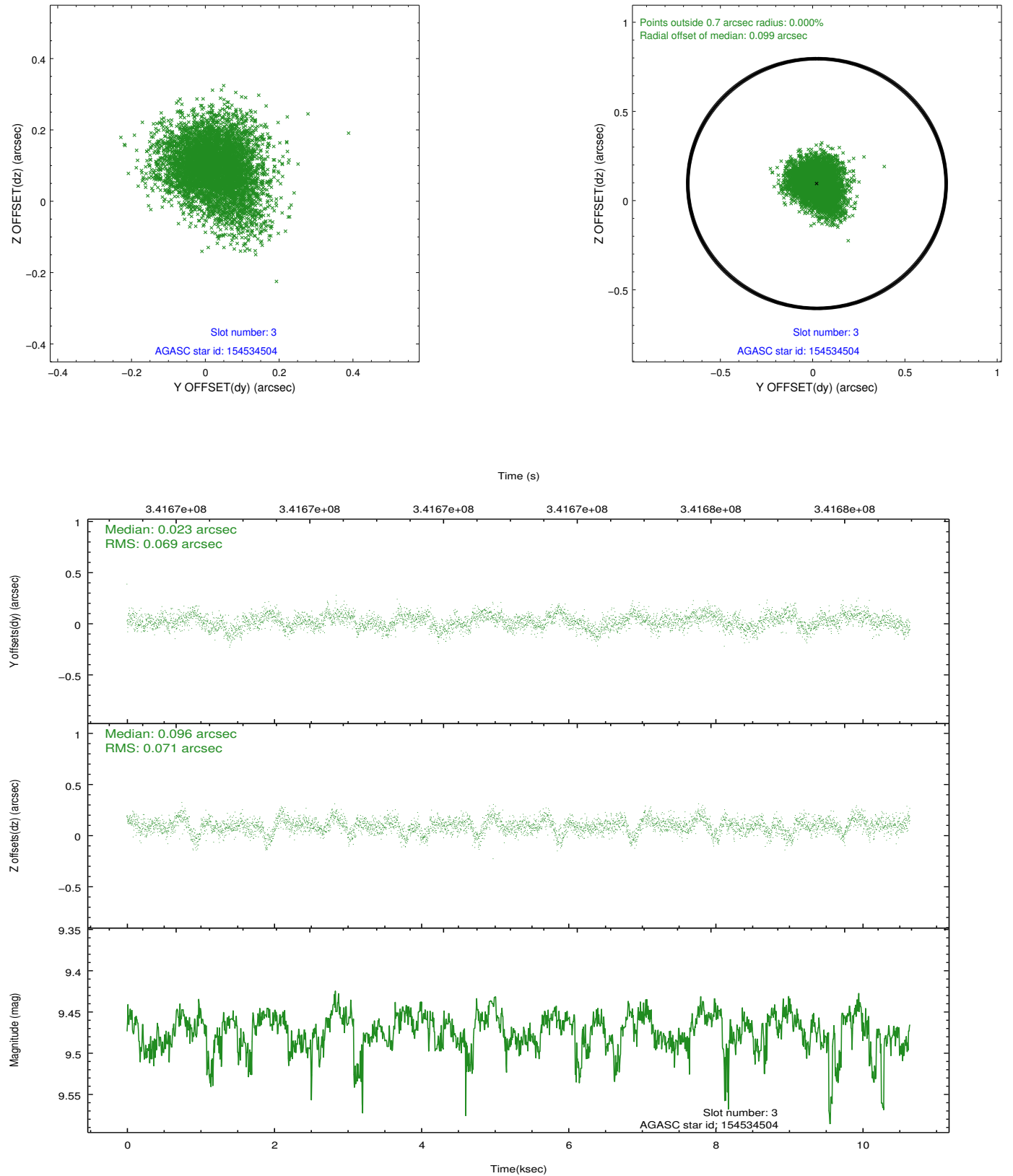


Slot Statistics

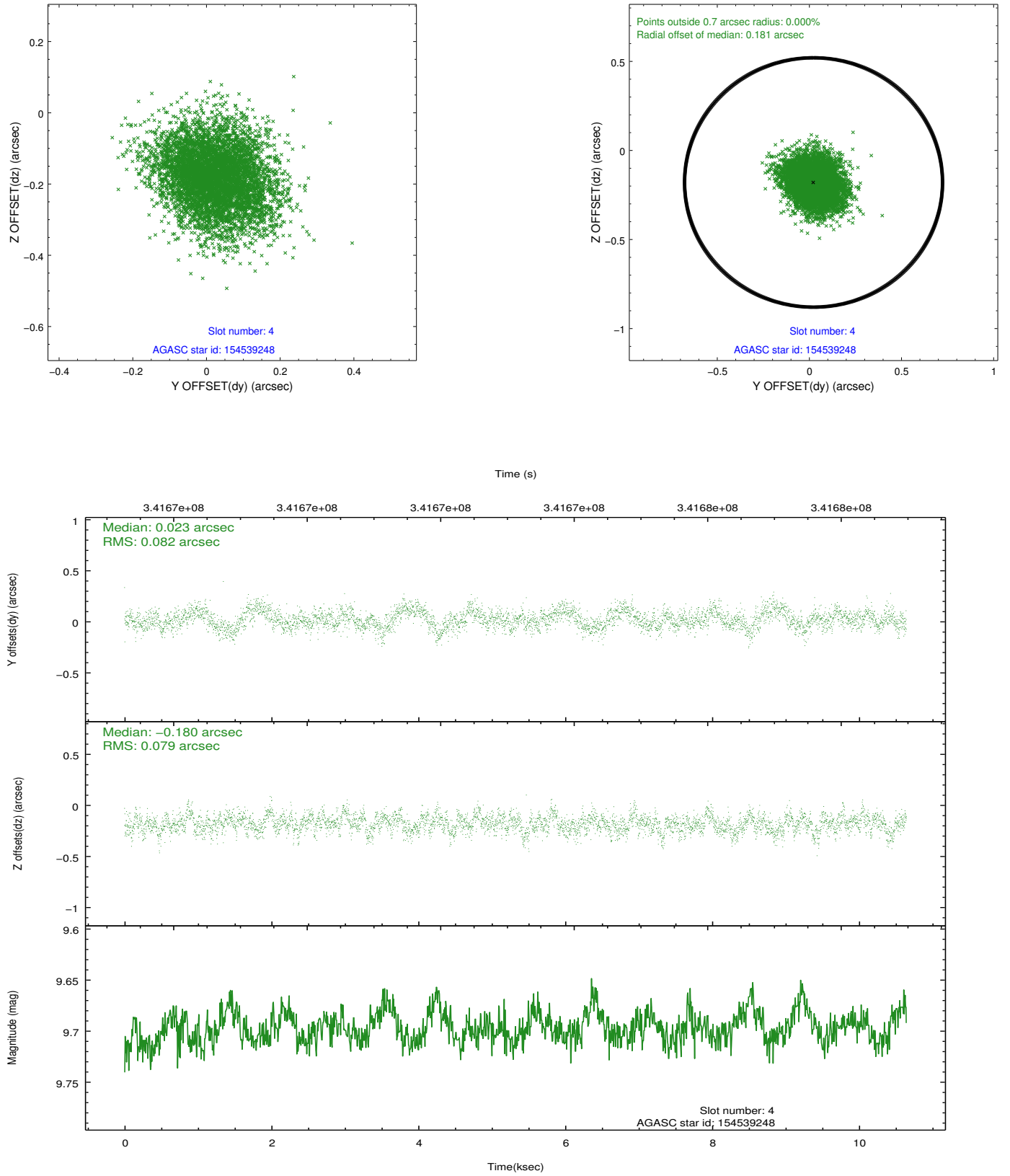
slot	status	id	mag	n_pts	med_dy	med_dz	dr1	dr2	ra	dec	mean_y	mean_z
0	FID	ACIS-S-2	6.95	2597	-0.016	-0.037	0.009	0.016	0.000000	0.000000	-765.88	-1734.47
1	FID	ACIS-S-4	7.03	2597	0.139	0.018	0.009	0.017	0.000000	0.000000	2147.34	173.54
2	FID	ACIS-S-5	7.07	2597	-0.154	0.028	0.009	0.016	0.000000	0.000000	-1818.22	167.80
3	GUIDE	154534504	9.47	5186	0.023	0.096	0.104	0.175	3.758452	17.220564	383.28	-385.00
4	GUIDE	154539248	9.70	5185	0.023	-0.180	0.120	0.197	3.507179	17.163758	556.42	-1256.54
5	GUIDE	154931344	8.86	5193	-0.033	-0.164	0.080	0.130	3.455741	17.918194	-2164.04	-1332.85
6	GUIDE	154932560	9.18	5188	0.082	0.209	0.093	0.154	4.000495	17.563646	-822.54	488.80
7	GUIDE	154938352	9.10	5187	-0.089	0.039	0.094	0.160	3.791120	17.691674	-1308.07	-212.48

2.4 Star Slots

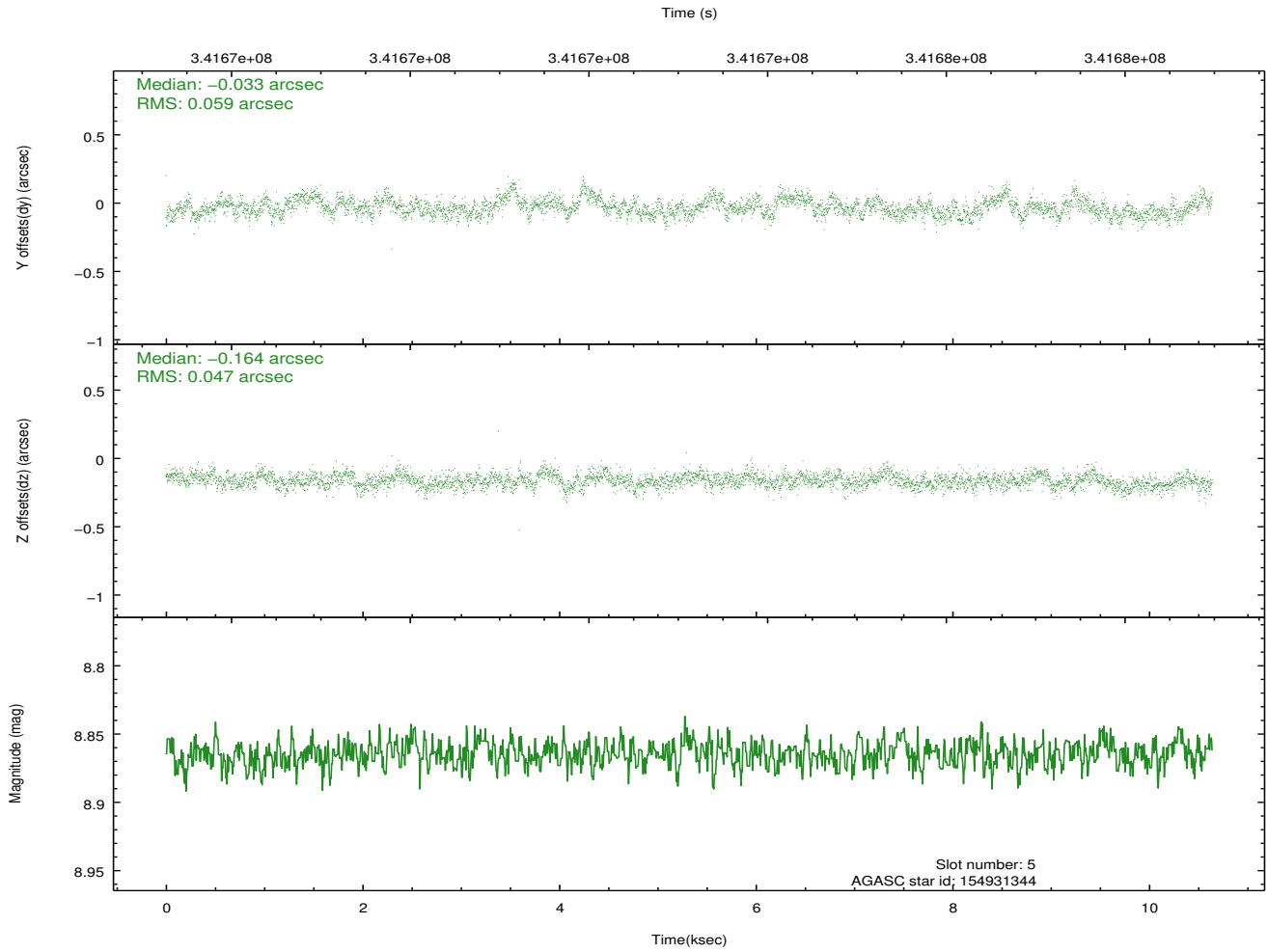
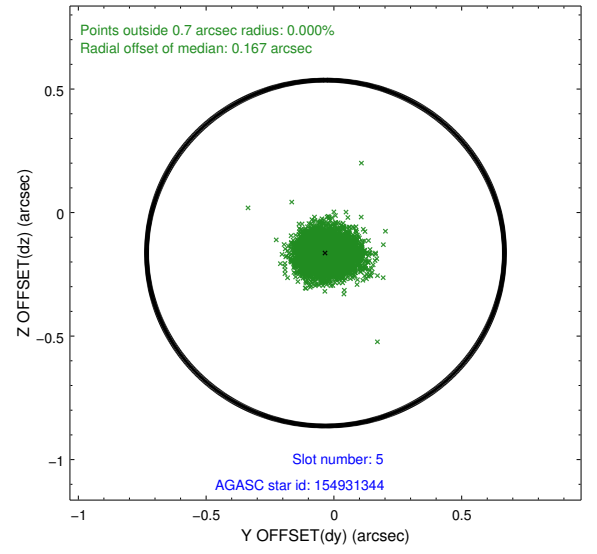
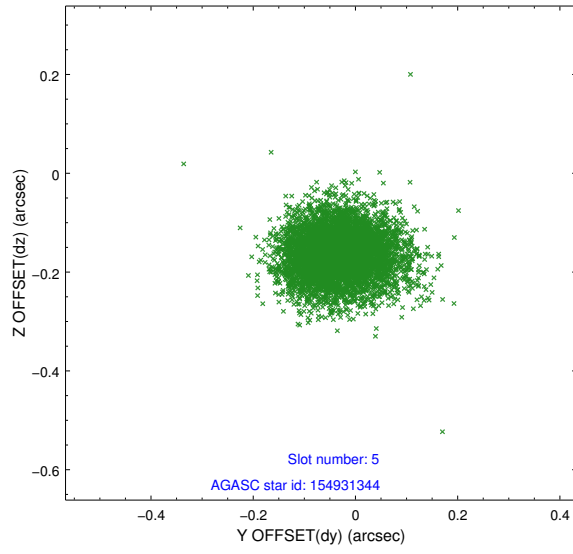
2.4.1 Slot 3



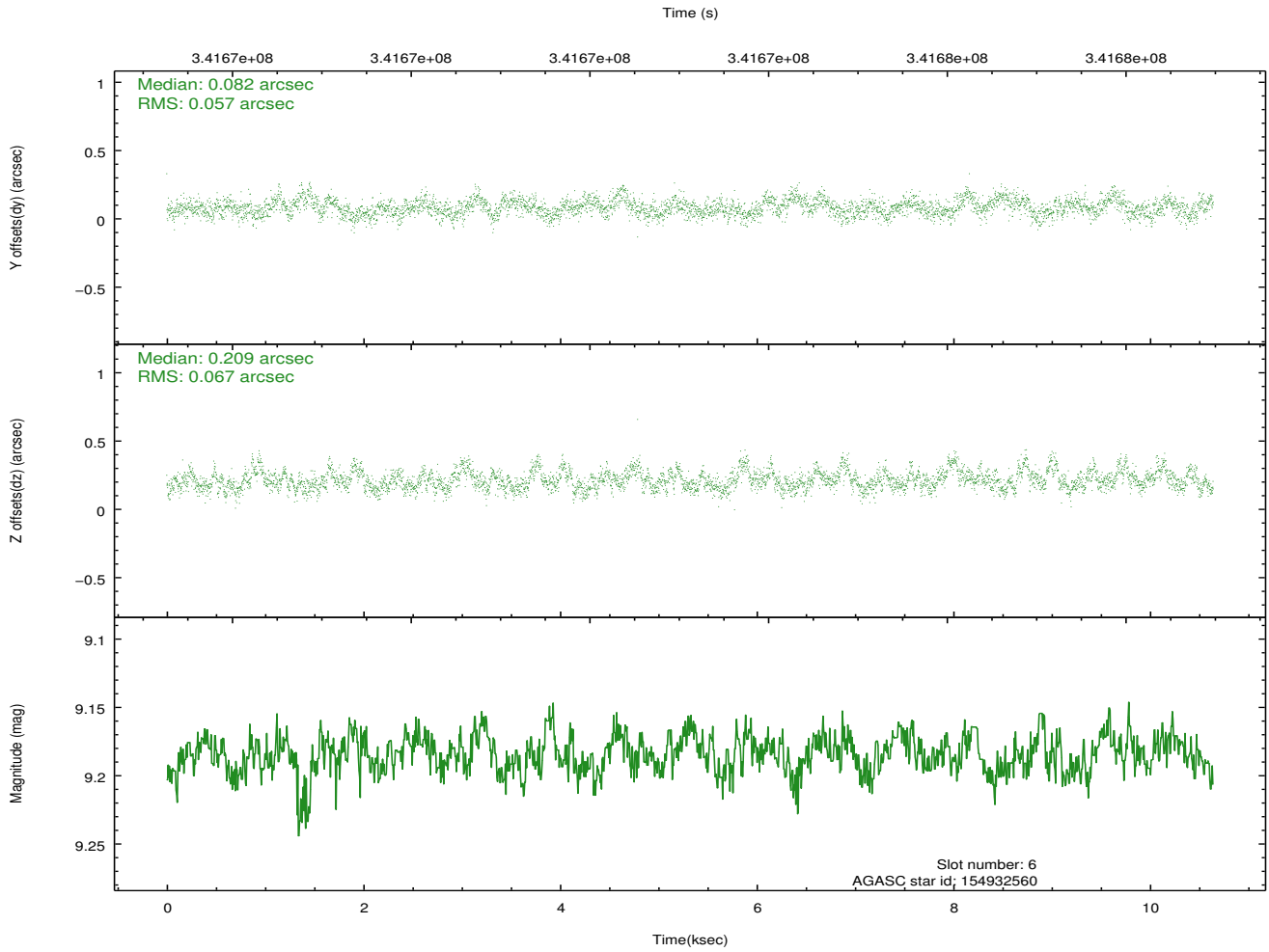
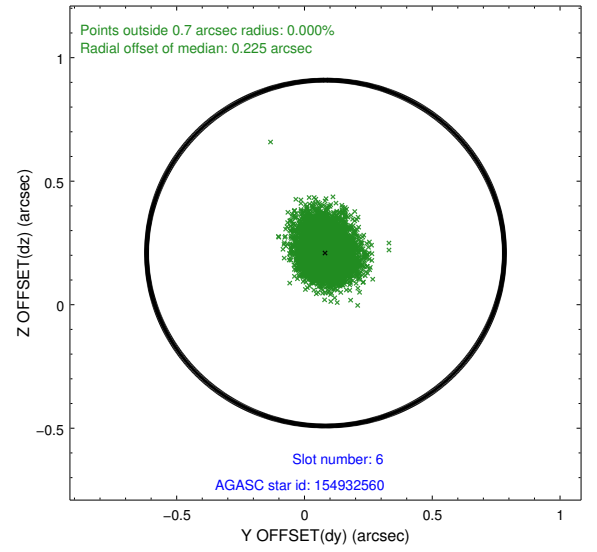
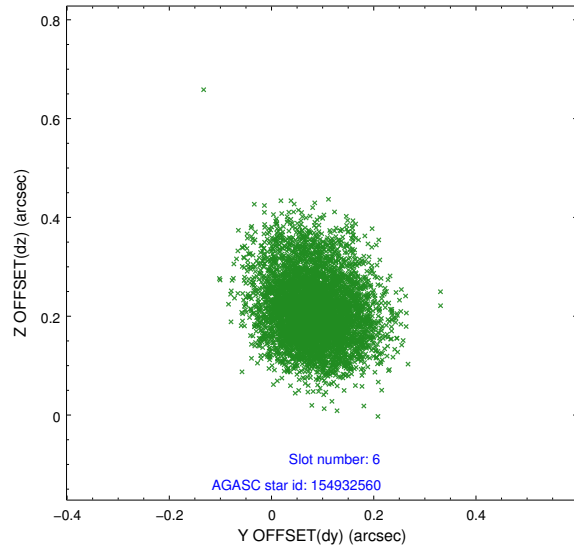
2.4.2 Slot 4



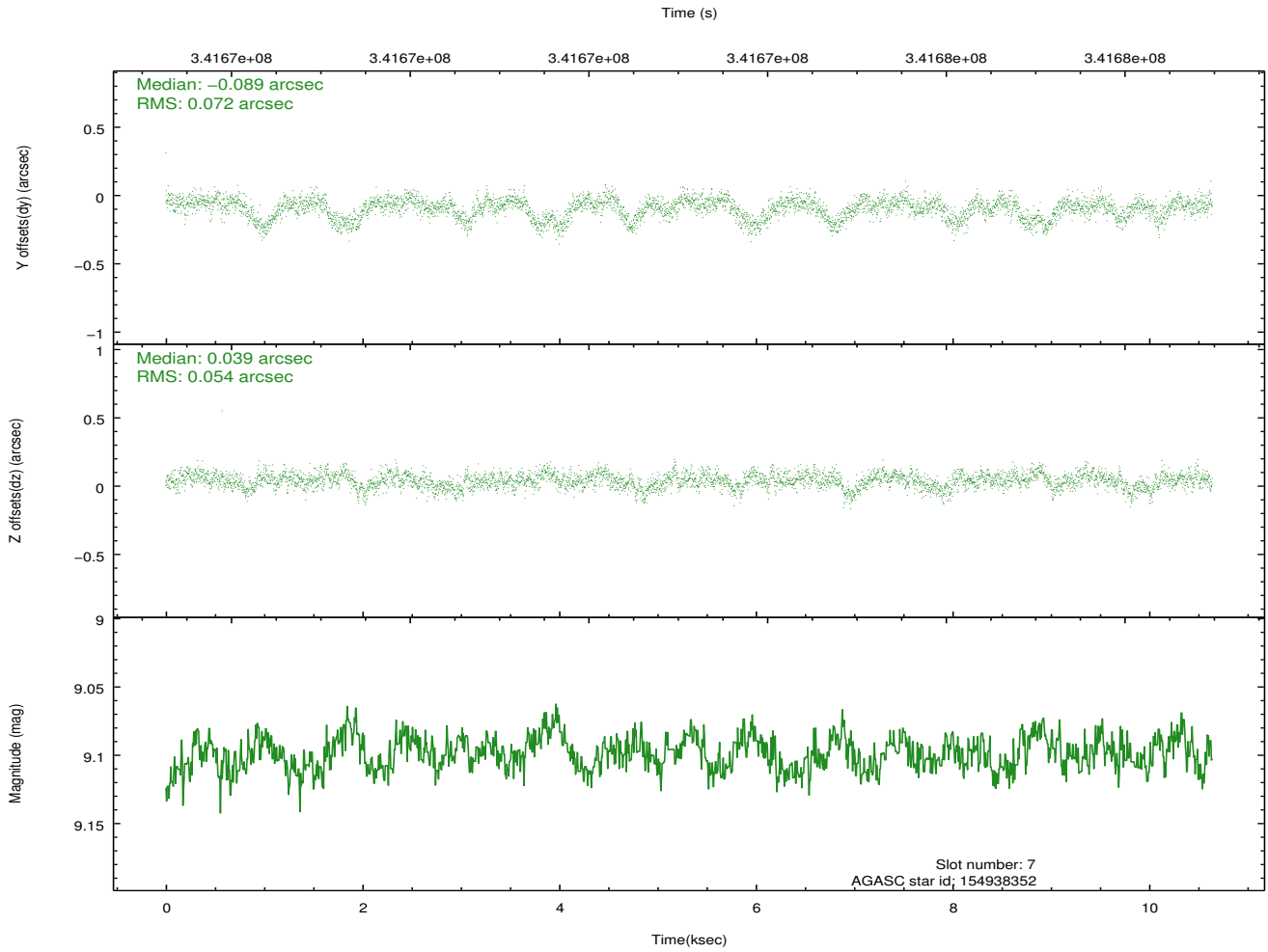
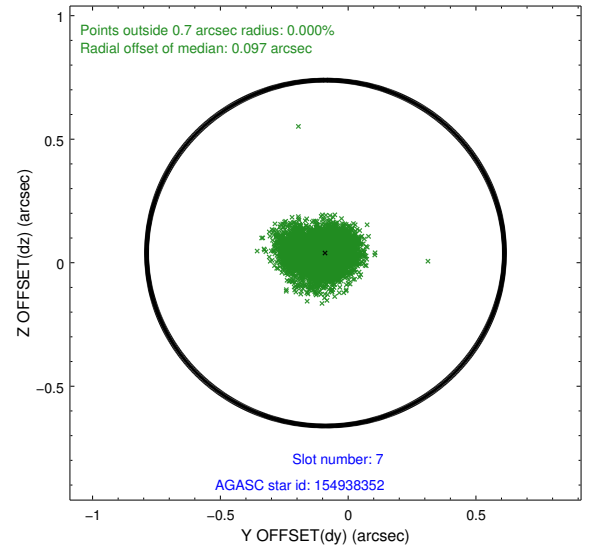
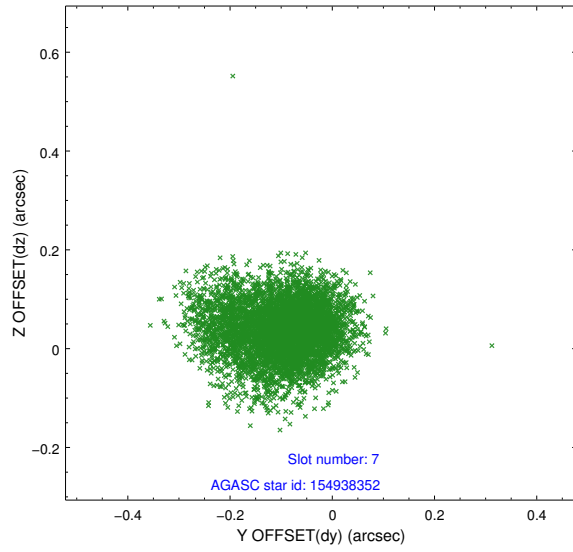
2.4.3 Slot 5



2.4.4 Slot 6

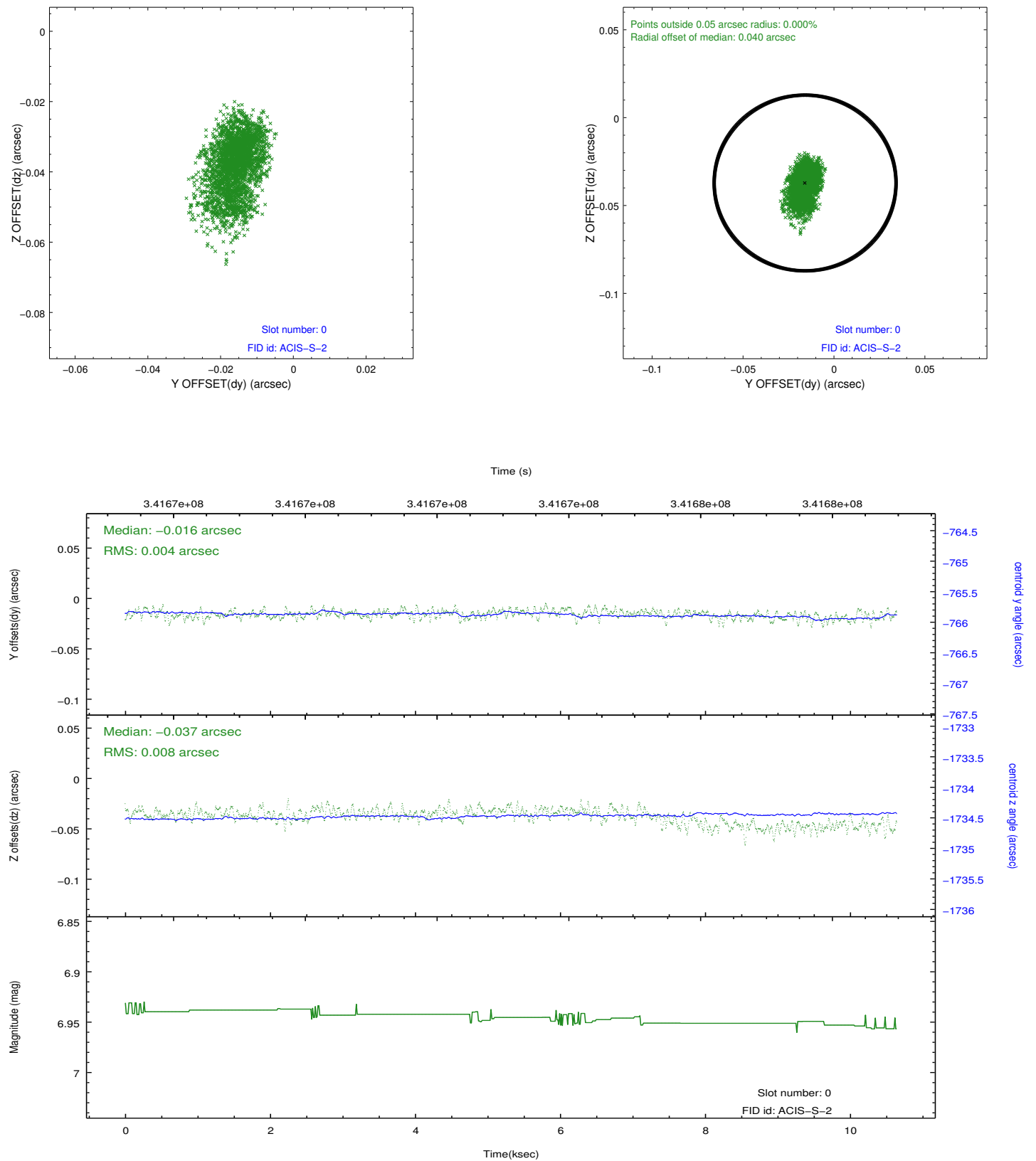


2.4.5 Slot 7

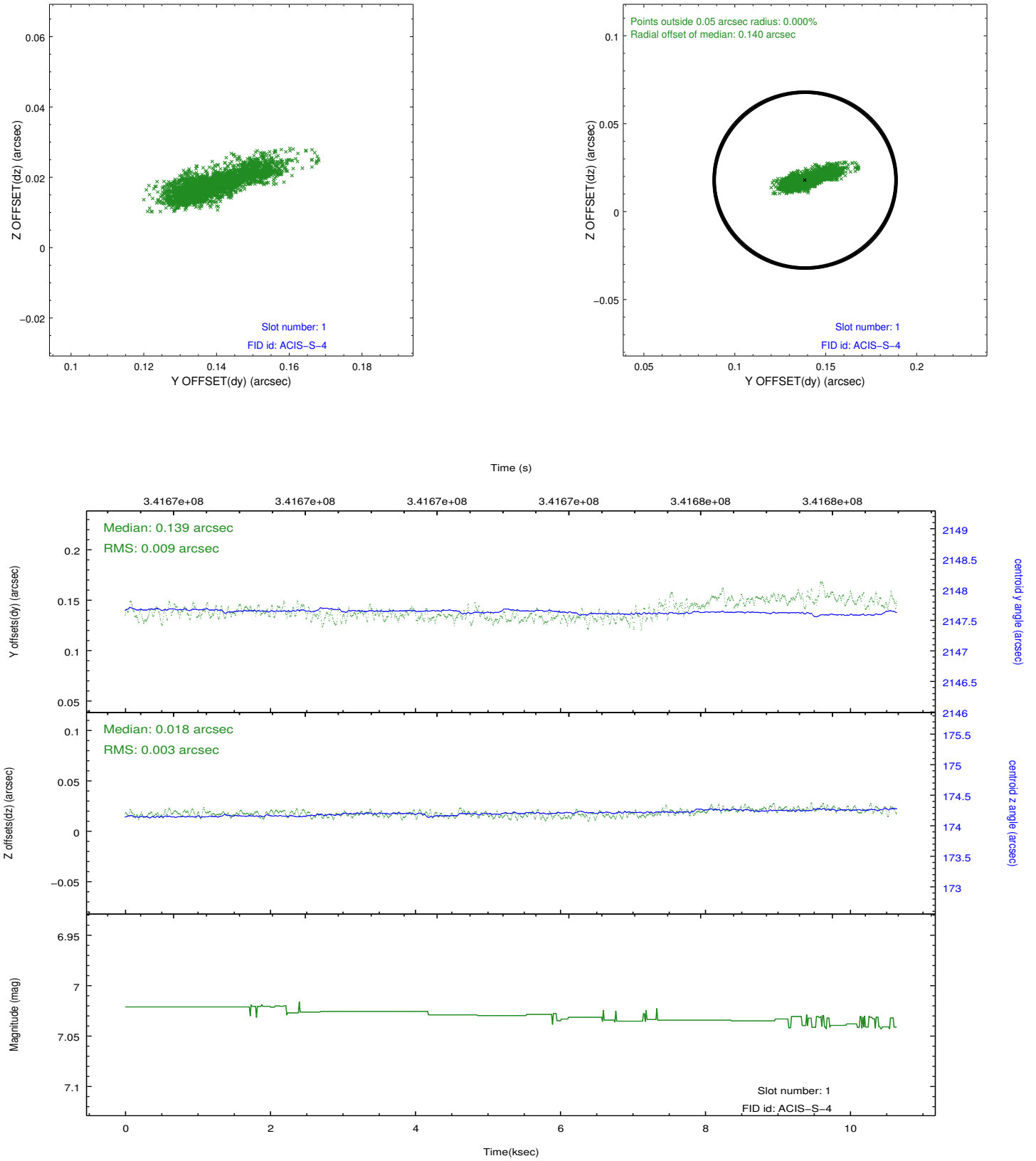


2.5 FID Slots

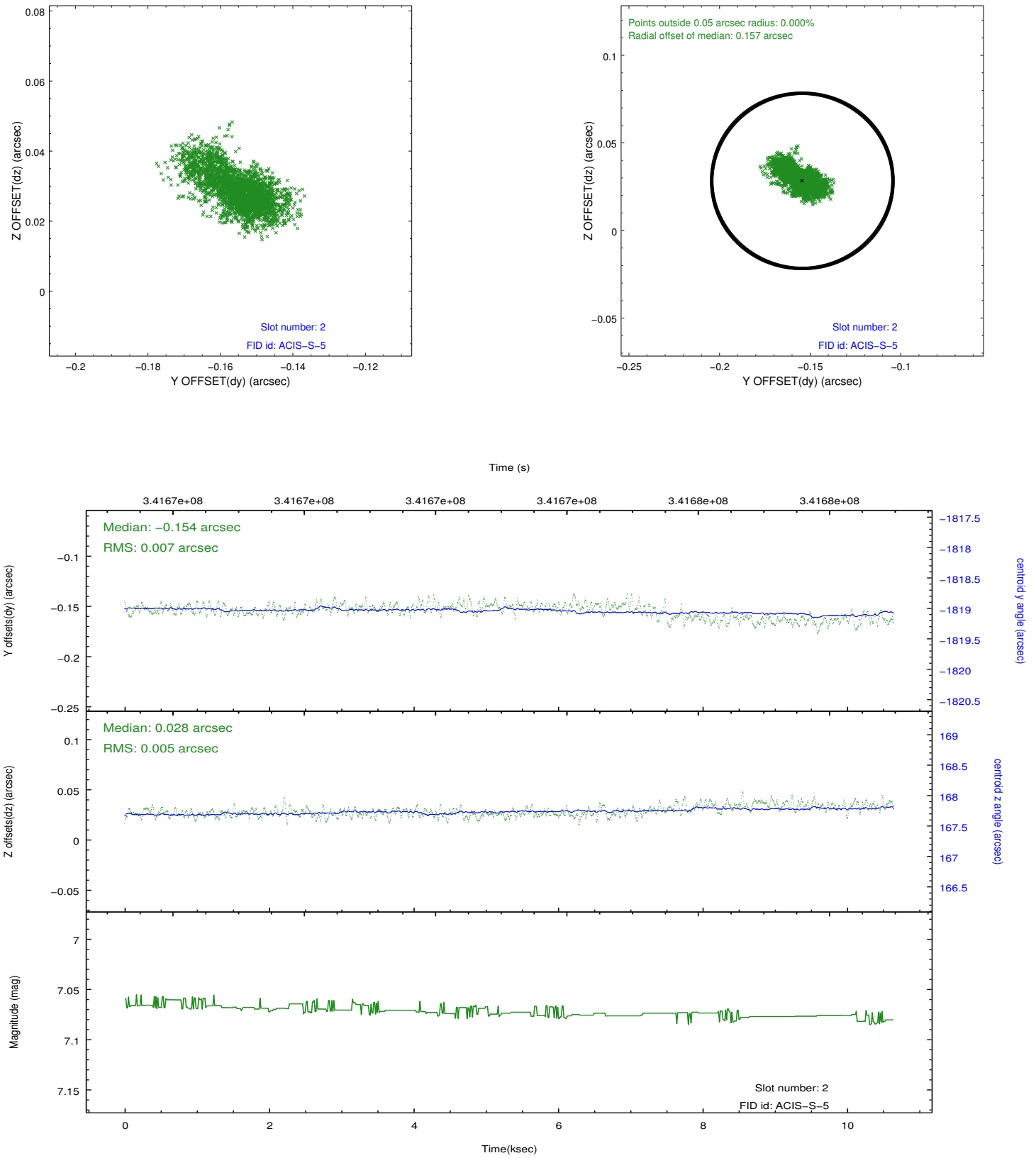
2.5.1 Slot 0



2.5.2 Slot 1



2.5.3 Slot 2



A Summary

A.1 Status

V&V Scientist	Joy Nichols
V&V Date (YYYY-MM-DD)	2012.06.01
V&V Edition	1
V&V Disposition and Status	OK
V&V Charge Time	10.0415999

A.2 Comments